

Philosophy of Science

Editor: Andrea Woody

Published on behalf of the Philosophy of Science Association



MANUSCRIPT PREPARATION - ARTWORK

Artwork

- [General guidelines](#)
- [Unacceptable artwork types](#)
- [Cropping and sizing](#)
- [Labeling](#)
- [Copyright](#)

General guidelines

Please read this information carefully to avoid publication delays.

All figures will be reproduced exactly as submitted, so authors must take special care to prepare high-quality files. Check with your technology support personnel if you need help with producing the proper files. Authors should submit all figure files via the *PHOS* Editorial Manager site (<https://www.editorialmanager.com/phos/>).

The figure files should include any labels or markers that are part of the figure itself, but not the figure number, title, legend, or notes (they will be typeset separately). The figure number, title, legend, and notes should be provided with the text of the manuscript. It is possible that a figure file that displays on the author's monitor and prints from the author's printer without any apparent problem may still have coding that prevents it from being embedded in electronically typeset pages. The production office will work with authors to diagnose and resolve problems and produce usable files at an early stage in the publication process.

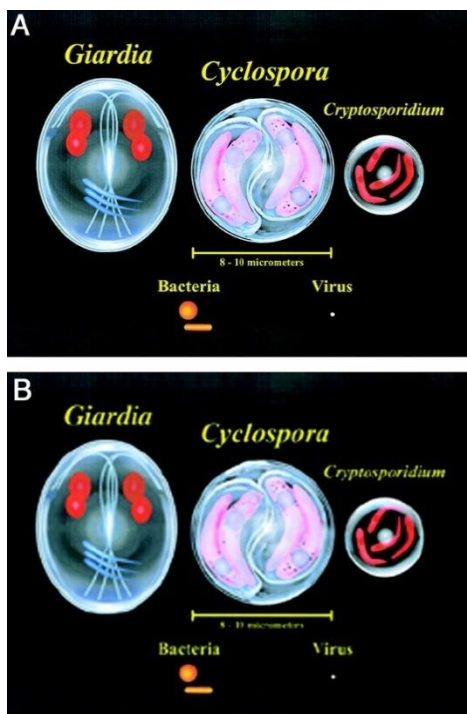
Please see the [Cambridge Journals Artwork Guide](#) for further information about preparing and submitting your figures.

Unacceptable artwork types

Artwork Created with PowerPoint, Excel, Word, or WordPerfect: The graphics created using PowerPoint, Excel, Word, or WordPerfect are low-resolution images that are not suitable for professional reproduction. Graphics created in these programs are acceptable only if they are line images, with no gray, color, or shading (see Line art).

Graphics downloaded from the Internet: Graphics downloaded from Internet pages are not acceptable for print reproduction. These graphics are low-resolution images (usually 72 dpi), which are suitable for screen display but are far below acceptable standards for print reproduction (see fig. 1).

Figure 1. 300 dpi (A) versus 72 dpi (B) resolution



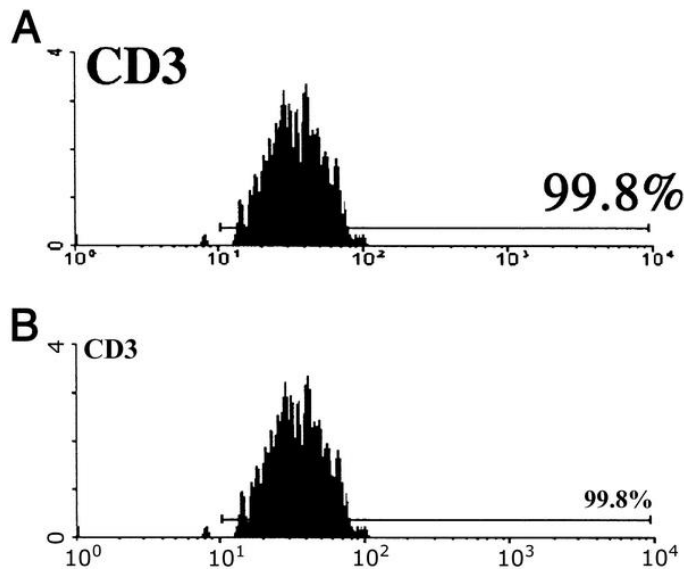
Cropping and sizing

Your artwork will be cropped and sized for publication. If you want to be certain that a particular area of your image is excluded or included, please indicate where the image should be cropped.

Labeling

Please be consistent with type (both font and size) within a figure. Since most figures are reduced, figures employing more than one font size may, after reduction, contain both text that is too small to read and text that is so large as to be awkward (see fig. 2). After reduction, all text should be legible but not excessively large. Of course,

some variation in the size of letters may be necessary to emphasize elements in a figure or to fit lettering in a limited space; however, please try to use no more than a 2-point variation in your type sizes. Figure 2. A, Note the large variation in font sizes used for labels. This makes sizing the image particularly difficult and results in awkward-looking graphics. In contrast, B uses fairly consistent type sizes, resulting in a more balanced figure.



Please use the same font type for all figures in your manuscript; use standard fonts such as Times, Arial, Helvetica, or Symbol. Sans serif fonts such as Arial and Helvetica are ideal and should be used whenever possible. All fonts must be embedded in your figures or all font type must be converted to outlines (applications such as Adobe Illustrator can do this). If you transmit a figure that uses custom or nonstandard fonts, the characters may appear in a different font or not appear at all. Remember to check proofs carefully to be sure that all fonts in figures are correct.

If the figures in your manuscript contain units of measurement, please label these units consistently. Make sure abbreviations are consistent with those used in the text and the legend.

Avoid placing labels over shaded areas of a figure. Best results are obtained from blacklettering on a white background. If the area requiring a label contains shading, it is best to create a white box and place the black label within.

Figures consisting of more than one panel should include uppercase panel designations ("A," "B," "C," etc.). The Press prefers to receive multipart figures assembled into single image files whenever possible (i.e., one file containing all panels, with parts labeled, and arranged so that they will fit on a journal page or portion of a page). Whenever possible, include all panels of a figure on the same page.

Each chart or graph should incorporate a key to any symbols or colors used. Please set the key inside the figure when possible.

All graphs and plots should include axis lines at the top, bottom, right, and left sides of the data, forming a completely enclosed box. This will allow for easier interpretation by the reader. Figures should not include text along the top axis outside of the box, except for axis labels. Any information about the figure should be contained within the figure legend or in the labels that appear inside the box.

Omit any extraneous information, such as page numbers, figure numbers, author names, or manuscript number, from the figure. Figures themselves should not contain a title or text that is duplicated in the figure legend. Figure legends should be included separately with the manuscript.

Copyright

If the artwork you are transmitting has been published elsewhere or is otherwise copyrighted, authors must obtain permission from the copyright holder in order to use the image. Permissions should grant worldwide print and electronic reproduction rights, in perpetuity. Permission grants that restrict reproduction to the print edition or that require later renewal are not acceptable. In addition, if the artwork is not your own, the Press will need information about its source. Copyright and source information should be included in the figure legend.

Please see the [Cambridge Journals Guide to Seeking Permissions](#) for further information.