



Low-order modelling of the wake dynamics of an Ahmed body

Bérengère Podvin^{1,†}, Stéphanie Pellerin¹, Yann Fraigneau¹,
Guillaume Bonnavion² and Olivier Cadot³

¹Université Paris-Saclay, CNRS, Laboratoire interdisciplinaire des sciences du numérique, 91405, Orsay, France

²Institut Pprime, UPR CNRS 3346, ISAE-ENSMA, Fluides Thermique Combustion, 86961 Futuroscope-Chasseneuil, France

³School of Engineering, University of Liverpool, Liverpool L69 3GH, UK

(Received 17 July 2021; revised 3 September 2021; accepted 4 September 2021)

We investigate the large-scale signature of the random switches between two mirrored turbulent wake states of flat-backed bodies. A direct numerical simulation (DNS) of the flow around an Ahmed body at a Reynolds number (Re) of 10 000 is considered. Using proper orthogonal decomposition (POD), we identify the most energetic modes of the velocity field and build a low-dimensional model based on the first six fluctuating velocity modes capturing the characteristics of the flow dynamics during and between switches. In the absence of noise, the model produces random switches with characteristic time scales in agreement with the simulation and experiments. This chaotic model suggests that random switches are triggered by the increase of the vortex shedding activity. However, the addition of noise results in a better agreement in the temporal spectra of the coefficients between the model and the simulation.

Key words: low-dimensional models, wakes

1. Introduction

The flat-backed Ahmed geometry (Ahmed, Ramm & Faitin 1984) is a useful model to study the complex afterbody aerodynamics and the related base suction of trucks, sport utility vehicles and other blunt-base vehicles responsible for high drag (Choi, Lee & Park 2014). The massive turbulent separation of the flat-backed Ahmed body is dominated by different motions associated with specific time scales (Grandemange, Gohlke & Cadot 2013; Volpe, Devinant & Kourta 2015; Haffner *et al.* 2020) – which will be expressed in the remainder of the paper in convective time units based on the fluid velocity and

† Email address for correspondence: podvin@limsi.fr

body height. First of all, the recirculation zone behind the body is generally instantaneously asymmetric and characterized by switches between the asymmetric quasi-stationary states. The duration of the switches is $O(50)$ convective time units and the mean time between switches is $O(1000)$ convective units. A second type of motion corresponds to vortex shedding in the wake, which can be split into lateral and vertical components and is characterized by non-dimensional periods of $O(5)$ convective units. A third type of motion can be associated with the pumping motion of the recirculation zone over time scales of $O(10-20)$ units. These results have been confirmed using different techniques to analyse the flow, such as direct Fourier analysis on the velocity field or using proper orthogonal decomposition (POD) by identifying the combinations of the POD modes associated with these global dynamics.

Pavia *et al.* (2020) made use of the filtering properties of the POD analysis to characterize experimentally the three-dimensional topology of the recirculation and succeeded to observe its evolution during the switches. These results were confirmed from the numerical simulation of Fan *et al.* (2020). These three-dimensional characterizations completed the previous experimental two-dimensional wake measurements of Pavia, Passmore & Sardu (2018) and Perry, Pavia & Passmore (2016). Podvin *et al.* (2020) recently took advantage of the three-dimensional POD to correlate the different known global dynamics to the base suction (or base drag). They found that the larger the quasi-steady deviation of the wake, the larger the base drag, while large vortex shedding intensity was correlated to lower quasi-steady deviation and then to lower drag. Although their simulation reported the permanent quasi-steady wake deviation (the reflectional symmetry-breaking state of Grandemange *et al.* 2013), it was not long enough to observe wake switching towards the opposite deviation. Recently, the experiment of Haffner *et al.* (2020) has carefully examined wake switching in relation to base drag and concluded with a base drag reduction of 8% during the switch, a similar figure found by Grandemange, Gohlke & Cadot (2014) using a passive control cylinder to symmetrize the wake or previous measurements of base drag due to Evrard *et al.* (2016) during a switch.

The first numerical wake switching was observed by Dalla Longa, Evstafyeva & Morgans (2019) and found to be associated with a vortex loop shedding, also reported by Fan *et al.* (2020). In an attempt to understand the triggering mechanism for the switch, Hesse & Morgans (2021) used different turbulent modelling and pointed out the role of the separation at the front. Whatever the mechanism is, the very long waiting time between the switches and the associated randomness are consistent with rare events of Poisson statistics (Grandemange *et al.* 2013; Volpe *et al.* 2015; Cadot *et al.* 2020) and can be successfully modelled using a Langevin equation as first introduced by Rigas *et al.* (2014, 2015). The modelling has been adapted to the Ahmed body (Brackston *et al.* 2016; Evrard *et al.* 2016; Barros *et al.* 2017) to simulate the bistable dynamics. For these so-called stochastic models, an additional noise is applied on a nonlinear dynamical system and the probability to change equilibrium states is proportional to $\exp(-\Delta V/\sigma)$. The noise intensity σ and the potential barrier between the two equilibrium states ΔV are deduced from the experimental signals using different identification methods (Rigas *et al.* 2014; Boujo & Noiray 2017). Recently, an alternative low-dimensional modelling based on POD was obtained by Podvin *et al.* (2020) by projecting the Navier–Stokes equations on the most energetic POD modes. However, their POD basis did not contain switching events, as no switching occurred during the simulation. Adding noise to the reduced-order model was necessary to produce the wake switching similarly to the stochastic models.

The origin of the noise responsible for these switchings still remains an open question. It has been addressed experimentally in Cadot *et al.* (2020) who attributed the main role to the fluctuation in the wake and not to the small-scale turbulent intensity of the free

stream flow. Together with the numerical simulations observation (Dalla Longa *et al.* 2019; Fan *et al.* 2020), there are strong evidences that events such as vortex shedding may trigger the switch and one may wonder if a chaotic process involving the largest scales of the flow could generate the observed bistable dynamics. The flow behaviour would be described by a nonlinear system as for stochastic models but it would not require additional noise to produce the bistable dynamics. This idea was explored by Varon *et al.* (2017) who showed that the low-frequency dynamics of the switch appeared to exhibit weakly chaotic behaviour.

The aim of the present paper is to pursue the modelling based on the POD of Podvin *et al.* (2020) but on a longer simulation that contains wake switchings. It will be shown that the POD basis is completed by a new POD mode associated with a switching event. The modelling leads to spontaneous and random switching through a chaotic dynamics implying directly the periodic vortex shedding. The article is organised as follows: § 2 contains a description of the numerical simulation along with a review of POD. The velocity POD modes are presented in § 3, then the model is elaborated and discussed in § 4 and the paper is concluded in § 5.

2. Methodology

The characteristics of the simulation are the same as in Podvin *et al.* (2020). The dimensions of the squareback Ahmed body are $L = 1.124$ m, $H = 0.297$ m, $W = 0.350$ m. The ground height is taken equal to $0.334H$ in the simulation. The code SUNFLUIDh, which is a finite-volume solver, is used to solve the incompressible Navier–Stokes equations. The Reynolds number (Re) based on the fluid viscosity ν , incoming velocity U and Ahmed body height H is 10^4 . The temporal discretization is based on a second-order backward Euler scheme, with implicit treatment of the diffusion terms and explicit representation of the convective terms (Adams–Bashforth scheme). We use $(512 \times 256 \times 256)$ grid points in, respectively, the longitudinal direction x , the spanwise direction y and the vertical direction z .

The mesh was refined near the body surface and the wall in order to capture the dissipative scales (following Howard & Pourquie 2002; Fares 2006; Minguez, Pasquetti & Serre 2008). In the boundary layers, the cell sizes in the wall-normal and transverse directions ranged from η_{bl} to $8\eta_{bl}$, where the viscous boundary-layer thickness $\eta_{bl} \approx 6.71Re^{-0.9}$ is the smallest wall scale in the simulation. The cell size in the downstream direction ranged from $5\eta_{bl}$ to $15\eta_{bl}$. In the wake region, within a downstream distance of $2H$, cell sizes varied from $2\eta_w$ to $16\eta_w$ in the transverse directions and from $10\eta_w$ to $20\eta_w$ along the downstream direction, where $\eta_w \approx 1.2Re^{-0.75}$ is the Kolmogorov length scale. The simulation time considered in the paper was approximately 500 convective time units based on the velocity U and height H . All reference units will be based on these two quantities. The time step was set to $\Delta t = 5 \times 10^{-4}$ and the Courant–Friedrichs–Lewy (CFL) number never exceeded 0.4. During the period considered, two switches in the deviation could be observed. Figure 1 represents the mean velocity field in a mid-height figure 1(a) and a mid-span plane figure 1(b). In all figures, the origin of the axes is taken at the top and foremost position of the Ahmed body in the vertical symmetry plane. The longitudinal axis is oriented downstream, the vertical axis pointing in the upward direction and the third component is chosen accordingly to obtain a right-handed coordinate system. Two switches were observed during the total length of the simulation. We note that in experiments (Evrard *et al.* 2016) or in simulations (Hesse & Morgans 2021) it was not unusual to observe inter-switch times of only a few hundred convective time units, which

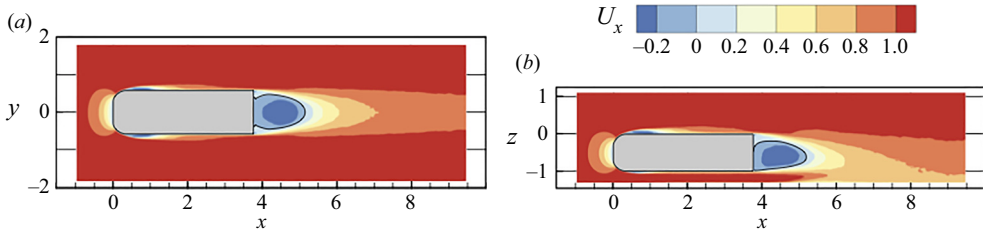


Figure 1. Mean velocity (a) mid-height horizontal plane and (b) mid-span vertical plane – the black lines correspond to the isovalue 0.

is consistent with the fact that the advent of switches is governed by a Poisson distribution of mean 1000 time units (Grandemange *et al.* 2013).

The main tool of analysis used in this paper is POD (Lumley 1967), which we apply to the velocity field $\underline{u}(\underline{x}, t)$ defined on a spatial domain D . The field can be expressed as a superposition of spatial modes ϕ_k :

$$\underline{u}(\underline{x}, t) = \sum_{k \geq 0} a_k^v(t) \underline{\phi}_k(\underline{x}) \quad (2.1)$$

where the spatial modes $\underline{\phi}_k$ are orthogonal (and can be made orthonormal), i.e. $\int_D \underline{\phi}_k(\underline{x}) \cdot \underline{\phi}_m(\underline{x}) \, d\underline{x} = \delta_{km}$ (with δ_{km} the Kronecker symbol), while the amplitudes a_k are uncorrelated. The modes can be ordered by decreasing energy $\lambda_1 \geq \lambda_2 \geq \dots \geq \lambda_k = \langle |a_k^v|^2 \rangle$, where $\langle \cdot \rangle$ represents a time average. Since the full velocity field is considered and the database is symmetrized, the mode 0 corresponds to the symmetric part of the time-averaged field (Podvin *et al.* 2020), which we checked was essentially equal to the time-averaged field (since the coefficient a_0 is constant within less than 0.3 %). The amplitudes a_k^v can be obtained from the knowledge of the spatial modes by projection of the vector field \underline{u} onto the spatial modes:

$$a_k^v(t) = \int_{\Omega} \underline{u}(\underline{x}, t) \cdot \underline{\phi}_k(\underline{x}) \, d\underline{x}. \quad (2.2)$$

One can obtain the modes from a set of N snapshots by computing the eigenvectors A of the temporal autocorrelation matrix C . One has $\bar{C}_{ij} A_{jk} = \lambda_k A_{ik}$, where $A_{jk} = a_k(t_j)$ and \bar{C} is the temporal autocorrelation matrix: $\bar{C}_{ij} = (1/N) \int_D \underline{u}(\underline{x}, t_i) \cdot \underline{u}(\underline{x}, t_j) \, d\underline{x}$ (method of snapshots) and $A_{jk} = a_k(t_j)$. When appropriate we will consider normalized amplitudes defined as $a_k = a_k^v / \sqrt{\lambda_k}$.

The decomposition was applied to the velocity field, using the symmetrization procedure described in Podvin *et al.* (2020) in order to guarantee all POD modes have the same reflectional symmetry $y \rightarrow -y$ as the geometry. Consequently, the POD modal basis is made to respect the symmetry of the forcing geometry. Results shown in this paper were based on a set of 1200 snapshots, 600 of which are extracted from the simulation, and 600 are obtained through the reflection symmetry. The original 600 snapshots span 300 convective time units, 200 of which correspond to the duration of the first switch. Comparison with another set of snapshots based on 2×200 samples acquired spanning the duration of the second switch did not show any significant differences in the shape of the modes.

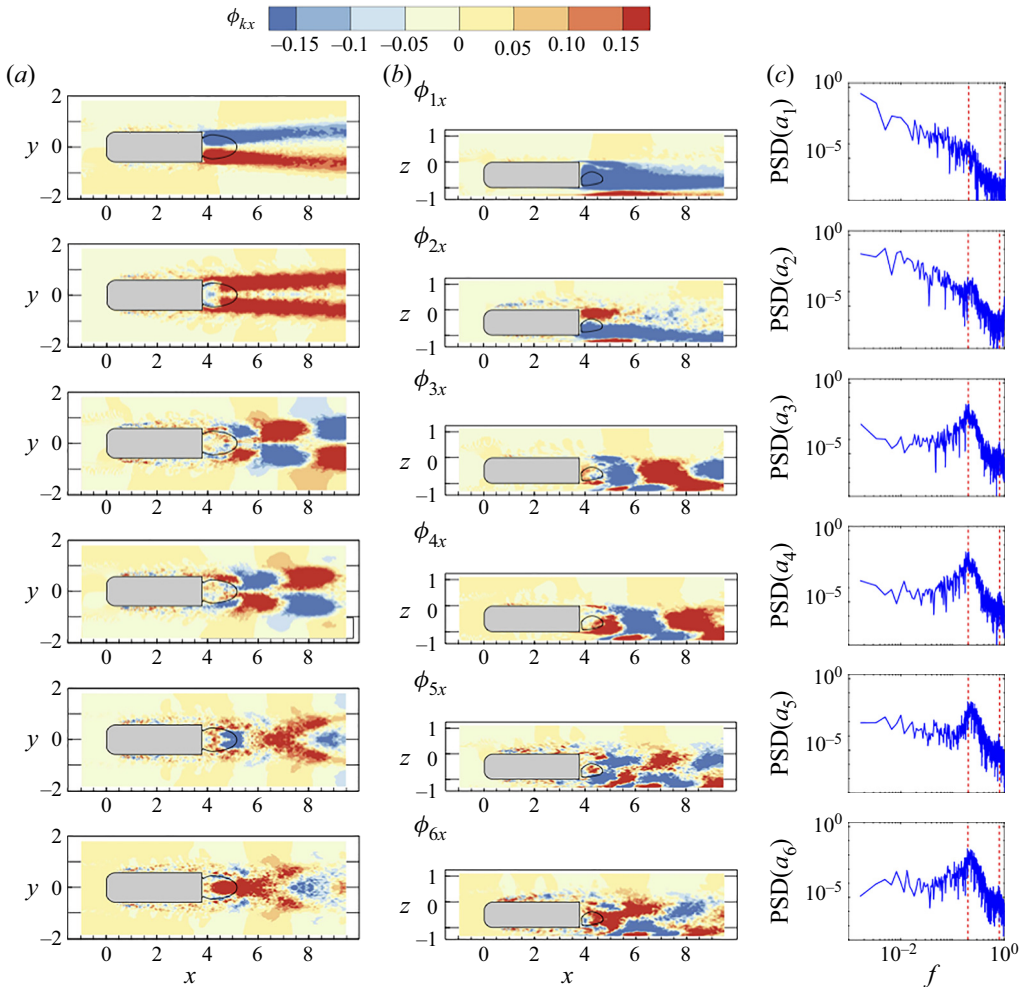


Figure 2. Cross-sections of POD velocity mode streamwise component: (a) on mid-height plane; (b) on mid-span plan for the symmetric modes $k = 2, 3, 4$ and at the position $y = 0.4H$ for the antisymmetric modes $k = 1, 5, 6$. The black line corresponds to the contour $U_x = 0$. (c) Amplitude temporal spectra – the red dashed lines correspond to the frequencies $f = 0.2$ and $f = 0.8$. PSD, power spectral density.

3. POD analysis of the velocity field

The POD modes of the full velocity field are shown in figure 2(a,b) as the component ϕ_{kx} of the modes k . They can be compared with those obtained using a database that does not contain any switching, described in Podvin *et al.* (2020). The main difference in the decompositions is the emergence of a new mode (mode 2 in figure 2(a,b)), that will be called the switch mode (please note that modes are indexed from 0 in the present paper and 1 in Podvin *et al.* 2020). The new second mode creates a strong dissymmetry between the upper and the lower part of the near wake. The mode is symmetric and is essentially streamwise invariant in the far wake. The temporal spectra of the amplitudes are also represented for each mode in figure 2(c). Modes 1 and 2 are characterized by low frequencies. We can notice a slight local increase in the spectrum around the non-dimensional frequency (or Strouhal number) of 0.2 – we will come back to this point in the next section.

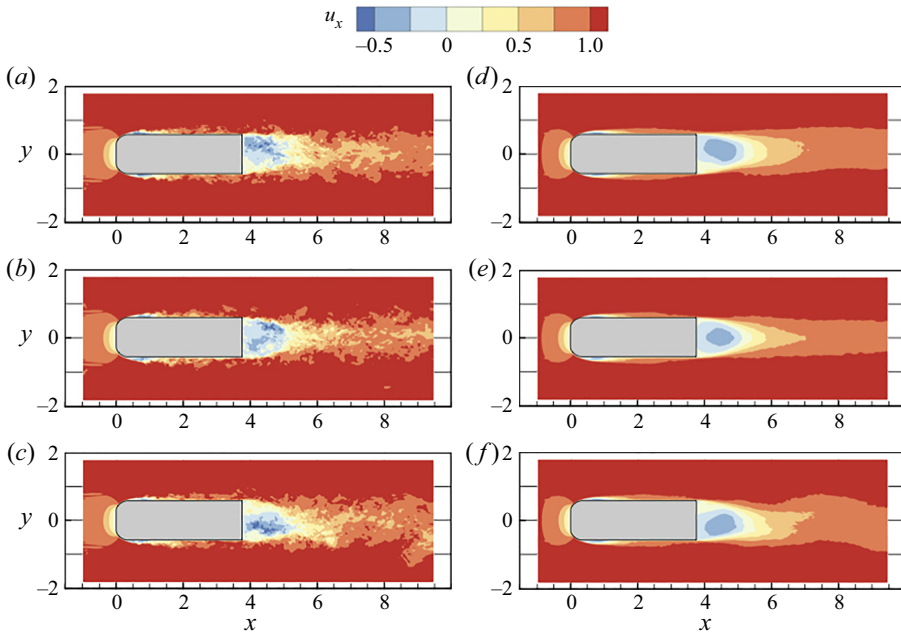


Figure 3. Velocity in a horizontal mid-plane at (a,d) the beginning, (b,e) during when $a_1^v = 0$ and (c,f) at the end of the switch; (a–c) instantaneous field; (d–f) reconstructed field using the mean and the six first fluctuating modes.

The next four modes (modes 3 to 6) correspond to von Kármán shedding modes in the horizontal and in the vertical direction. Modes 3 and 4 are characterized by a non-dimensional frequency of 0.19 and modes 5 and 6 are characterized by a frequency of 0.23. These four modes also display a slight peak at 0.8, which can be seen to match the frequency of the Kelvin–Helmholtz vortices observed along the body sides and originating from the separations at the nose in the modes 3, 4, 5, 6.

It is possible to describe the large-scale dynamics with a relatively low number of modes as evidenced by figure 3 which shows three instantaneous fields at the beginning figure 3(a), in the middle figure 3(b) and at the end figure 3(c) of the first switch. Each time stamp of the switch is defined as a_1^v maximum, zero and minimum. The times are represented by red vertical lines in the shaded area of figure 4. The full fields (figure 3a,b,c) can be compared with their reconstructions (figure 3d,e,f) based on the mean (figure 1) and the six most energetic POD modes (figure 2a,b). The time evolution of the first two fluctuating amplitudes a_1^v and a_2^v are represented in figure 4. We can see that the coefficient of the switch mode a_2^v is maximum during the switch. In the next section, we examine if the large-scale signature of the switch can be reproduced with a low-dimensional model.

4. Low-dimensional model

4.1. Derivation

We give a brief review of the derivation process (see also Podvin *et al.* 2020; Soucasse *et al.* 2020). The Navier–Stokes equations are projected onto the basis of the spatial velocity modes ϕ_k for a given truncation $k \in [1, \dots, N_T]$ and a model, or system of N_T ordinary differential equations (ODEs) is obtained. The model is of the form

$$\dot{a}_k^v = L_{km} a_m^v + Q_{kmp} a_m^v a_p^v + T_k. \tag{4.1}$$

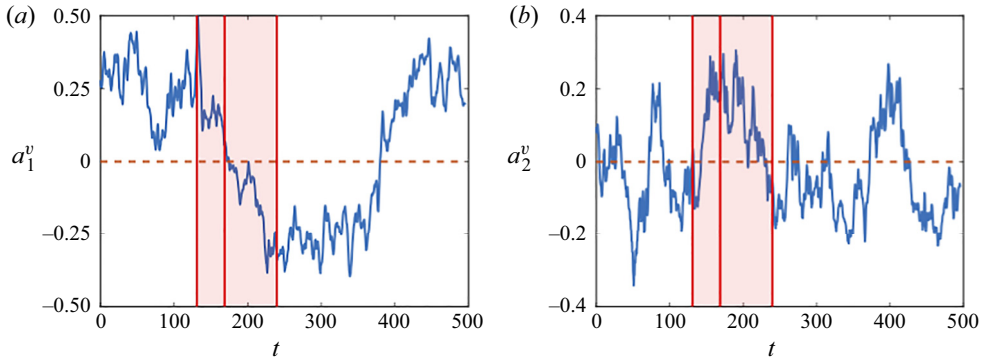


Figure 4. Amplitudes of the POD velocity modes (a) a_1^v and (b) a_2^v . The vertical lines in the shaded area corresponding to the switch represent the times of figure 3.

The linear term L_{km} is due to the viscous dissipation $L_{km} = \int v \Delta \underline{\phi}_m \cdot \underline{\phi}_k \, d\underline{x}$ and is found to be essentially diagonal. The quadratic terms Q_{kmp} can be written in symmetric form as

$$Q_{kmp} = \frac{1}{2}(2 - \delta_{mp}) \int (\underline{\phi}_p \cdot \nabla \underline{\phi}_m) + \underline{\phi}_m \cdot \nabla \underline{\phi}_p) \cdot \underline{\phi}_k \, d\underline{x}. \quad (4.2)$$

They represent the nonlinear interaction of the resolved modes, including the mean field corresponding to mode 0. Here T_k is a closure term representing the contribution of the unresolved stresses (associated with the modes excluded from the truncation) to the evolution of the amplitude a_k . As has been shown in Podvin & Sergent (2017), the closure term can be modelled as $T_k = -\alpha_k \sum_{p=1}^{N_T} (\lambda_p + |a_p^v|^2) a_k^v + \epsilon_k$, where λ_p is the energy of mode p and ϵ_k is a noise-like perturbation. The value of α_k is determined by requiring that for some equilibrium state $a_p^{v,eq}$ inferred from the direct numerical simulation (DNS), the total contribution $A_k = L_{kk} a_k^v + Q_{kk0} a_k^v + T_k$ cancels when $a_k^v = a_k^{v,eq}$ for $k = 1, \dots, 6$, and $\epsilon_k = 0$, which yields

$$\alpha_k = \frac{L_{kk} + Q_{kk0}}{\sum_{p=1}^{N_T} (\lambda_p + |a_p^{v,eq}|^2)}, \quad (4.3)$$

which yields

$$A_k = \alpha_k a_k^v \sum_{p=1}^{N_T} (|a_p^{v,eq}|^2 - |a_p^v|^2). \quad (4.4)$$

Since (4.4) is derived from relatively crude modelling assumptions, some adjustment in the definition of A_k may be needed in the model.

4.2. Seven-mode truncation

In what follows, we consider a seven-mode truncation for the full field ($N_T = 6$). Since the amplitude of the mean field is constant, i.e. $a_0 = 1$, the model is six-dimensional. The model includes the deviation mode, the switch mode and the von Kármán shedding modes. We note that the model is different from that of Podvin *et al.* (2020) which did not include the switch mode a_2 . If only the deviation mode is retained in the model,

the system is formally analogous to the model of Rigas *et al.* (2015). The quadratic interactions coefficients were thresholded: values smaller than 5×10^{-3} were not included in the model. It remains to determine the small-scale modelling parameters α_k and ϵ_k . The noise level r.m.s. $\sigma_k = \langle \epsilon_k^2 \rangle^{1/2}$ was chosen to be equal to a constant value σ for all modes and was estimated to be of the order of $\sigma \sim \alpha_k \sum_{p \geq 1}^{N_T} \lambda_p \sim 0.1$. In order to determine α_k , we use (4.3). The equilibrium state was defined as $a_1^{eq} = \pm 1$, $a_2^{eq} = 0$ (no switch mode), $|a_{2i-1}^{eq}|^2 + |a_{2i}^{eq}|^2 = 2$ for $i = 2, 3$ (constant vortex shedding intensity). Given the eigenvalues $\lambda_2 = 0.057$, $\lambda_3 = 0.015$ and $\lambda_i \sim 0.01$ for $i = 3, \dots, 6$, (4.3) yields values of α_k in the range $[0.85, 1.25]$. Since the small-scales modelling is relatively crude, we used a single value $\alpha_k = \alpha = 1$ for all modes. The system can then be written in normalized form as

$$\dot{a}_0 = 0, \tag{4.5}$$

$$\dot{a}_1 = A_1 + 0.011a_1a_2 + 0.019a_0a_3 + 0.023a_0a_4 + 0.045a_3a_5 + 0.005a_1a_6 + \epsilon_1, \tag{4.6}$$

$$\dot{a}_2 = A_2 + 0.12a_0a_5 + 0.11a_0a_6 + 0.007a_2a_3 - 0.018a_1^2 + 0.018a_0^2 + \epsilon_2, \tag{4.7}$$

$$\dot{a}_3 = A_3 + 1.08a_0a_4 - 0.02a_0a_1 + 0.037a_1a_6 - 0.025a_2a_4 + \epsilon_3, \tag{4.8}$$

$$\dot{a}_4 = A_4 - 1.08a_0a_3 - 0.16a_0a_1 - 0.04a_1a_5 + 0.025a_2a_3 + \epsilon_4, \tag{4.9}$$

$$\dot{a}_5 = A_5 + 1.18a_0a_6 - 0.13a_0a_2 + 0.035a_2a_3 - 0.013a_1a_3 + 0.029a_1a_4 - 0.013a_2^2 + \epsilon_5, \tag{4.10}$$

$$\dot{a}_6 = A_6 - 1.18a_0a_5 - 0.26a_0a_2 - 0.026a_2a_5 - 0.02a_1a_3 + \epsilon_6, \tag{4.11}$$

where the numerical quadratic coefficients \tilde{Q}_{kmp} are equal to $(\sqrt{\lambda_m \lambda_p} / \lambda_k) Q_{kmp}$, and A_k is based on the following non-dimensional adaptation of (4.4) to account for the energy transfer to the unresolved scales:

$$A_k = \alpha_k a_k \sum_{p=1}^{N_T} (\beta_k |a_p^{v,eq}|^2 - |a_p^v|^2) = \alpha_k a_k \sum_{p=1}^6 \lambda_p (\beta_k |a_p^{eq}|^2 - |a_p|^2), \tag{4.12}$$

where $\beta_k = 1$ for $k \leq 2$ and $\beta_k = 0.8$ for $k \geq 3$. The mode a_0 corresponding to the mean velocity is equal to 1. We point out that the evolution of a mode of a given symmetry is governed by interactions of modes obeying the same symmetry. The deviation mode is therefore controlled by its interaction with the switch mode, but also by cross-interactions between vortex-shedding modes of opposite symmetries.

4.3. Results

The model was integrated over 20 000 convective time units with and without noise. We first consider the integration without noise ($\sigma = 0$). The time series are represented in figure 5(a) and can be compared with the normalized amplitudes obtained from the simulation in figure 4. We can see that the model displays chaotic dynamics characterized by switches. The inter-switch time is random and of the order of a few thousand units, in agreement with Grandemange *et al.* (2013). The duration of the switch itself is $O(100)$ convective units, in good agreement with the simulation. The intensity of the vortex shedding increases drastically during the switches (figure 5a, bottom two rows). This suggests that the shedding modes symmetrize the wake. At the onset of the switch, a_2 increases then decreases sharply. It becomes strongly positive and reaches its maximum

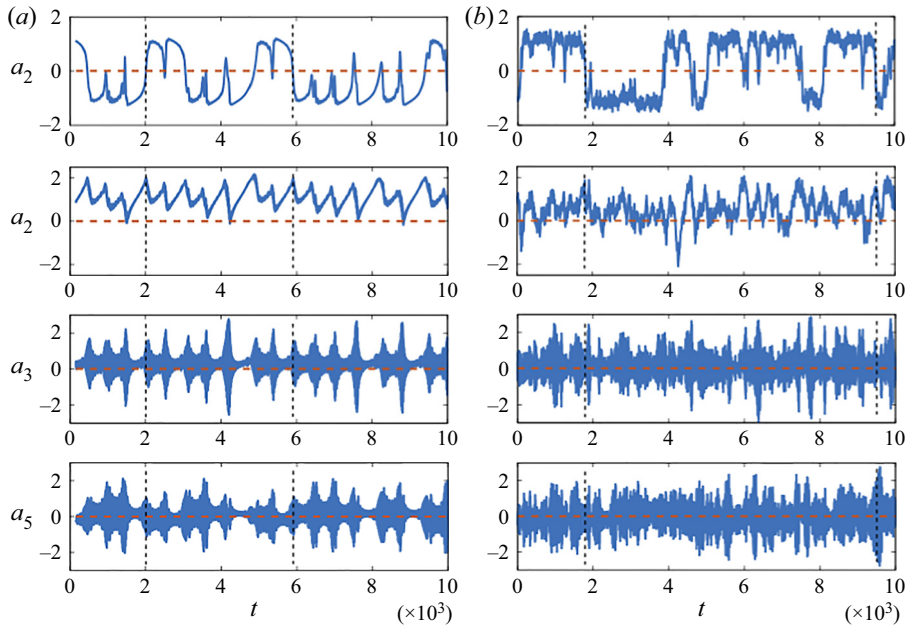


Figure 5. Amplitudes of POD modes 1, 2, 3 and 5 integrated in the model (a) without and (b) with noise. Vertical dashed lines locate time at which $a_1 = 0$ for two switching examples.

when a_1 goes through zero, in agreement with the DNS (figure 4). The model therefore does not only display spontaneous switches, but also captures the specific dynamics of the switch mode a_2 . We then consider the integration of the model with noise. Figure 5(b) shows the evolution of the amplitudes for a model with a noise r.m.s. of $\sigma = 0.07$. As expected, the inter-switch time interval decreased with an increasing noise level but remained of the order of 10^3 units for $\sigma \in [0.05, 0.1]$. As can be seen in figure 5(b), the noise may trigger a switch without any shedding intensity increase as shown for the first switch example (see caption). However, the second switch example is clearly associated with an a_5 increase corresponding to the shedding in the vertical direction.

The addition of noise leads to time evolutions which are closer to the DNS amplitudes, as can also be seen in figure 6, which compares the phase portraits in the (a_1, a_2) space for the model without noise, the model with noise and the DNS. We note that when noise is added to the model, a_2 can take negative values between switches, which is more consistent with DNS observations (there is still a discrepancy, which is due to the choice of the particular equilibrium $a_2^{eq} = 0$). This is confirmed by comparison of the spectra shown in figure 7. The characteristic frequencies associated with vortex shedding are clearly identified in the model without noise, while an excellent agreement in both the dominant frequencies and in the general shape and levels of the spectra is observed between the model with noise and the DNS. The model therefore captures the main time scales of the dynamics, including those of the switch.

Further insight into the physics of the model can be obtained by artificially manipulating the energy levels of the modes. The results of these numerical experiments are presented in figure 8. Excluding the switch mode from the model (see figure 8a) i.e. setting $a_2 = 0$ suppresses switches in the absence of noise – the system remains near one of the equilibrium states – and strongly limits them in the presence of noise which was

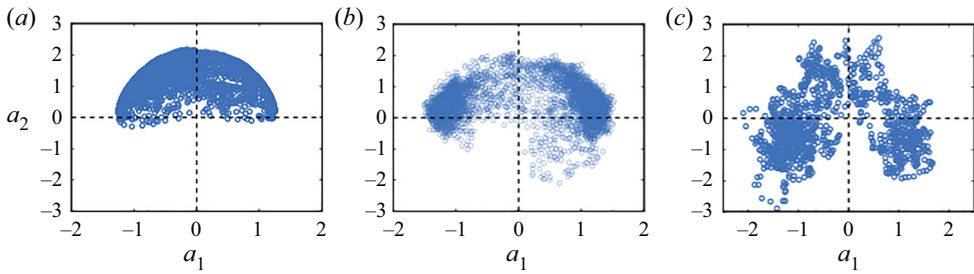


Figure 6. Phase portraits in the (a_1, a_2) space: (a) in model without noise; (b) in model with noise level $\sigma = 0.07$; (c) in DNS.

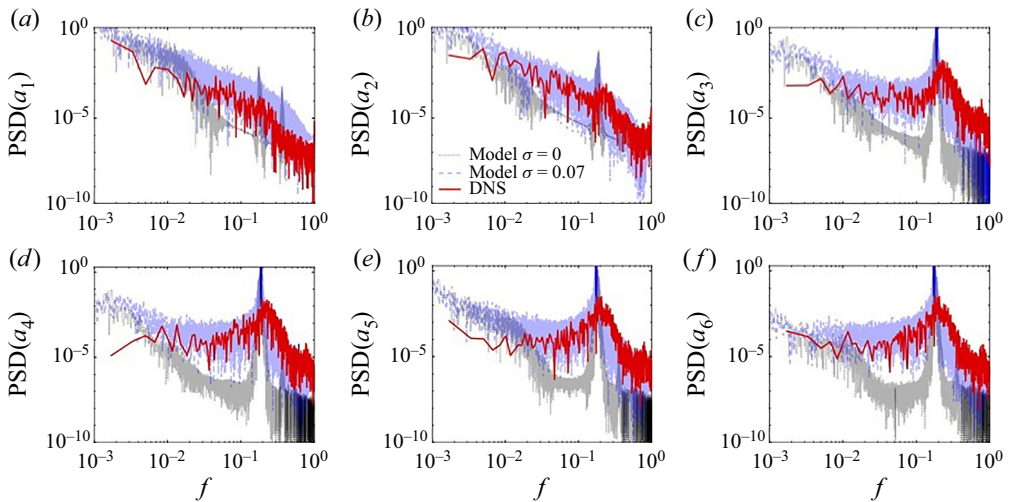


Figure 7. Comparison of the spectra of the velocity mode amplitudes a_k in the DNS and in the model without and with a noise level σ .

obtained with the same noise perturbation as in figure 5(b). This is confirmed by linear stability of the quasi-steady state, according to which the equilibrium is stable if the switch mode is omitted from the model. The influence of the vortex-shedding intensity can be examined by modifying the eigenvalues $\lambda_i \rightarrow s\lambda_i$ for $i = 3, \dots, 6$. This leads to modifications in the quadratic terms \hat{Q}_{kmp} as well as in A_k , with a new equilibrium state $|a_{2i-1}^{eq}|^2 + |a_{2i}^{eq}|^2 = 2s$ for $i = 2, 3$ and a new value of α in order to satisfy (4.3), (4.4). Integration of the model without noise is presented in figure 8(b) for $s = 1.5$ and $s = 0.5$. Spontaneous switching is more frequent when the energy is increased by 50% ($s = 1.5$), as can be seen from comparison with figure 5, and is suppressed when the vortex-shedding energy is reduced to 50% ($s = 0.5$) of its expected value. This suggests that both the switch and vortex-shedding modes are key players in the switching process. We speculate that the vortex-shedding modes could be considered as a periodic forcing that introduces chaotic behaviour at longer time scales in the 2-D system constituted by the deviation and the switch modes, in a manner that could be reminiscent of forced nonlinear oscillators such as the Duffing or the Van der Pol equation (Guckenheimer & Holmes 1983).

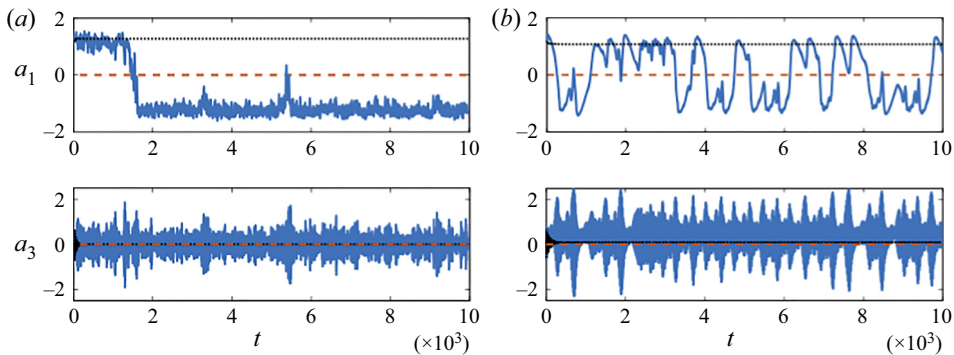


Figure 8. Amplitudes of POD modes 1 and 3 in modified models: (a) models with no switch mode $a_2 = 0$ with (solid line) and without noise (dotted line), (b) models with no noise and modified vortex shedding energy $s\lambda_i$, $i = 3, \dots, 6$ (see text) for $s = 1.5$ (solid line) and $s = 0.5$ (dotted line).

5. Conclusion

We have investigated switches of the wake deviation in the flow around an Ahmed body using POD analysis of the velocity field. Along with the deviation and vortex-shedding modes that were previously detected in the simulation, a new mode, called the switch mode, was identified. The effect of the mode during the switch is to speed up fluid on the upper part of the wake, and to slow it down on its lower part. A six-dimensional model consisting of the deviation, switch and four modes associated with vortex shedding was deduced from the Navier–Stokes equations. In the absence of noise, the model displays chaotic dynamics, with switches occurring intermittently on a time scale of $O(10^3)$ convective units and lasting for approximately 100 units. The model captures the strong variations of the switch mode, which reaches its maximum when the deviation amplitude is zero, and predicts a sharp increase of the vortex-shedding intensity at the onset of the switch. The agreement with the simulation is further strengthened when noise is added to the model, as it results in a very good prediction of the temporal spectra of the large scales. Numerical experiments highlight the importance of both switch and vortex-shedding modes in the switching process.

Funding. This research received no specific grant from any funding agency, commercial or not-for-profit sectors.

Declaration of interests. The authors report no conflict of interest.

Author ORCIDs.

-  Bérèngère Podvin <https://orcid.org/0000-0001-7003-719X>;
-  Stéphanie Pellerin <https://orcid.org/0000-0002-5365-8610>;
-  Yann Fraigneau <https://orcid.org/0000-0001-9104-1569>;
-  Guillaume Bonnavion <https://orcid.org/0000-0001-6636-2467>;
-  Olivier Cadot <https://orcid.org/0000-0001-7323-6418>.

REFERENCES

- AHMED, S.R., RAMM, G. & FAITIN, G. 1984 Some salient features of the time-averaged ground vehicle wake. *Tech. Rep.* SAE Technical Paper Series 840300. SAE International.
- BARROS, D., BORÉE, J., CADOT, O., SPOHN, A. & NOACK, B.R. 2017 Forcing symmetry exchanges and flow reversals in turbulent wakes. *J. Fluid Mech.* **829**, R1.

- BOUJO, E. & NOIRAY, N. 2017 Robust identification of harmonic oscillator parameters using the adjoint Fokker–Planck equation. *Proc. R. Soc. Lond. A* **473**, 20160894.
- BRACKSTON, R.D., GARCI DE LA CRUZ, J.M., WYNN, A., RIGAS, G. & MORRISON, J.F. 2016 Stochastic modelling and feedback control of bistability in a turbulent bluff body wake. *J. Fluid Mech.* **802**, 726–749.
- CADOT, O., ALMARZOOQI, M., LEGEAI, A., PAREZANOVIĆ, V. & PASTUR, L. 2020 On three-dimensional bluff body wake symmetry breaking with free-stream turbulence and residual asymmetry. *C. R. Méc* **348** (6–7), 509–517.
- CHOI, H., LEE, J. & PARK, H. 2014 Aerodynamics of heavy vehicles. *Annu. Rev. Fluid Mech.* **46**, 441–468.
- DALLA LONGA, L., EVSTAFYEVA, O. & MORGANS, A.S. 2019 Simulations of the bi-modal wake past three-dimensional blunt bluff bodies. *J. Fluid Mech.* **866**, 791–809.
- EVRRARD, A., CADOT, O., HERBERT, V., RICOT, D., VIGNERON, R. & DELERY, J. 2016 Fluid force and symmetry breaking modes of a 3D bluff body with a base cavity. *J. Fluids Struct.* **61**, 99–114.
- FAN, Y., CHAO, X., CHU, S., YANG, Z. & CADOT, O. 2020 Experimental and numerical analysis of the bi-stable turbulent wake of a rectangular flat-backed bluff body. *Phys. Fluids* **32**, 105111.
- FARES, E. 2006 Unsteady flow simulation of the Ahmed reference body using a lattice Boltzmann approach. *Comput. Fluids* **35** (8), 940–950 (Special issue for the Proceedings of the First International Conference for Mesoscopic Methods in Engineering and Science).
- GRANDEMANGE, M., GOHLKE, M. & CADOT, O. 2013 Turbulent wake past a three-dimensional blunt body. Part 1. Global modes and bi-stability. *J. Fluid Mech.* **722**, 51–84.
- GRANDEMANGE, M., GOHLKE, M. & CADOT, O. 2014 Turbulent wake past a three-dimensional blunt body. Part 2. Experimental sensitivity analysis. *J. Fluid Mech.* **752**, 439–461.
- GUCKENHEIMER, J. & HOLMES, P. 1983 *Nonlinear Oscillations, Dynamical Systems and Bifurcations of Vector Fields*. Springer.
- HAFFNER, Y., BORÉE, J., SPOHN, A. & CASTELAIN, T. 2020 Mechanics of bluff body drag reduction during transient near-wake reversals. *J. Fluid Mech.* **894**, A14.
- HESSE, F. & MORGANS, A.-S. 2021 Simulation of wake bimodality behind squareback bluff-bodies using LES. *Comput. Fluids* **223**, 104901.
- HOWARD, R.J.A. & POURQUIE, M. 2002 Large eddy simulation of an Ahmed reference model. *J. Turbul.* **3**, N12.
- LUMLEY, J.L. 1967 The structure of inhomogeneous turbulent flows. In *Atmospheric Turbulence and Radio Wave Propagation* (ed. A.M. Iaglom & V.I. Tatarski), pp. 221–227. Nauka.
- MINGUEZ, M., PASQUETTI, R. & SERRE, E. 2008 High-order large-eddy simulation of flow over the ‘Ahmed body’ car model. *Phys. Fluids* **20**, 0951011.
- PAVIA, G., PASSMORE, M. & SARDU, C. 2018 Evolution of the bi-stable wake of a square-back automotive shape. *Exp. Fluids* **59**, 2742.
- PAVIA, G., PASSMORE, M., VARNEY, M. & HODGSON, G. 2020 Salient three-dimensional features of the turbulent wake of a simplified square-back vehicle. *J. Fluid Mech.* **888**, A33.
- PERRY, A.K., PAVIA, G. & PASSMORE, M. 2016 Influence of short rear end tapers on the wake of a simplified square-back vehicle: wake topology and rear drag. *Exp. Fluids* **57** (11), 169.
- PODVIN, B., PELLERIN, S., FRAIGNEAU, Y., EVRRARD, A. & CADOT, O. 2020 Proper orthogonal decomposition analysis and modelling of the wake deviation behind a squareback Ahmed body. *Phys. Rev. Fluids* **6** (5), 064612.
- PODVIN, B. & SERGENT, A. 2017 Precursor for wind reversal in a square Rayleigh–Bénard cell. *Phys. Rev. E* **05** (1), 013112.
- RIGAS, G., MORGANS, A.S., BRACKSTON, R.D. & MORRISON, J.F. 2015 Diffusive dynamics and stochastic models of turbulent axisymmetric wakes. *J. Fluid Mech.* **778**, R2.
- RIGAS, G., OXLADE, A.R., MORGANS, A.S. & MORRISON, J.F. 2014 Low-dimensional dynamics of a turbulent axisymmetric wake. *J. Fluid Mech.* **755**, 159.
- SOUCASSE, L., PODVIN, B., RIVIÈRE, P. & SOUFIANI, A. 2020 Reduced-order modelling of radiative transfer effects on Rayleigh–Bénard convection in a cubic cell. *J. Fluid Mech.* **898**, A2.
- VARON, E., EULALIE, Y., EDWIGE, S., GILOTTE, P. & AIDER, J.L. 2017 Chaotic dynamics of large-scale structures in a turbulent wake. *Phys. Rev. Fluids* **2**, 034604.
- VOLPE, R., DEVINANT, P. & KOURTA, A. 2015 Experimental characterization of the unsteady natural wake of the full-scale square back Ahmed body: flow bi-stability and spectral analysis. *Exp. Fluids* **56** (5), 1–22.