

The reproductive biology of two epibenthic species of Antarctic nototheniid fish of the genus *Trematomus*

MARIO LA MESA^{1*}, VINCENZO CAPUTO² and JOSEPH T. EASTMAN³

¹ISMAR-CNR, Istituto di Scienze Marine, Sede di Ancona, Largo Fiera della Pesca, 60125 Ancona, Italy

²Istituto di Biologia e Genetica, Università Politecnica delle Marche, Via Ranieri 65, 60131 Ancona, Italy

³Department of Biomedical Sciences, College of Osteopathic Medicine, Ohio University, Athens, OH 45701-2979, USA

*m.lamesa@ismar.cnr.it

Abstract: *Trematomus eulepidotus* and *T. loennbergii* are two of the most common epibenthic fish in the waters of the High Antarctic continental shelf. Since the reproductive biology of these species has not been studied in the Ross Sea, we provide a macroscopic and histological analysis of the reproductive effort and gonadal development in both sexes. Most samples were collected during benthic trawl surveys in the south-western Ross Sea in the 1996 and 1997 summer seasons. The aim of the study was to define the reproductive characteristics of these two sympatric species and to examine the hypothesis that different reproductive strategies mitigate interspecific competition. We found that, in common with most Antarctic notothenioids, both species possess a suite of similar reproductive strategies including delayed sexual maturity, prolonged gametogenesis, group-synchronous oocyte maturation, a single spawning event per year and iteroparity. Both species show a comparable reproductive effort in terms of potential fecundity with between 2000 and 20 000 eggs per female per season. Nevertheless, the two species exhibited a considerable difference in the timing of the breeding season, spawning in summer (*T. eulepidotus*) and in autumn (*T. loennbergii*). This gives rise to a mismatch in the time of appearance of larvae in the environment and probably leads to reduced competition.

Received 18 September 2007, accepted 5 November 2007

Key words: gametogenesis, reproductive strategies, Ross Sea, sexual maturity

Introduction

In number of species, abundance and ecological diversity, fish of the genus *Trematomus* dominate the fauna of the High Antarctic shelf (DeWitt 1971, Kock 1992, Hureau 1994). *Trematomus* is composed of 11 species encompassing benthic, epibenthic and semipelagic lifestyles (Andriashev 1970, Eastman 1993). Their radiation filled a wide range of habitats on the shelf and was probably the result of pelagization, an evolutionary trend whereby lineages originating from benthic ancestors have repeatedly evolved to live or at least feed in the water column (Klingenberg & Ekau 1996). In ecomorphological analyses, *Trematomus eulepidotus*, *T. lepidorhinus* and *T. loennbergii* cluster as epibenthic species (Ekau 1988, 1991, Klingenberg & Ekau 1996), living on or in close proximity to the bottom as documented by underwater photography and video (Ekau & Gutt 1991, Gutt & Ekau 1996). These species share similar body morphology, characterized by a streamlined appearance, moderate activity levels, absence of substrate contact adaptations and lower percentage weights in seawater than most other nototheniids (Eastman 1993, Wöhrmann 1998). The most recent phylogenetic analysis of *Trematomus*, including 10 of 11 species, indicates that the genus is monophyletic and that *T. lepidorhinus* and *T. loennbergii* are sister species (Sanchez *et al.* 2007). However *T. eulepidotus* is external to these species by

several nodes and thus the epibenthic lifestyle was not attained by common ancestry, and the ecomorphological index of Ekau (1988, 1991) does not reflect phylogeny but rather similar life styles that were independently acquired (Sanchez *et al.* 2007).

Although the epibenthic species share a suite of morphological characters, they differ in diet, depth distribution and relative abundance. Dietary data indicate that *T. eulepidotus* is a zooplanktivore, preying primarily on euphausiids, hyperiids, copepods and pteropods, but occasionally on other crustaceans, polychaetes, chaetognaths and fish (Permitin & Tarverdieva 1978, Targett 1981, Schwarzbach 1988, Roshchin 1991, Pakhomov 1997, Brenner *et al.* 2001). Conversely, *T. loennbergii* feeds mostly on benthic species, usually associated with the substrate, including polychaetes, isopods, decapods, amphipods, bivalves and fishes (Eastman 1985, Schwarzbach 1988, La Mesa *et al.* 1997).

The epibenthic species of *Trematomus* have a circum-Antarctic distribution and occur sympatrically in the large shelf areas of the Weddell and Ross seas (DeWitt *et al.* 1990). They exhibit reasonably disjunct depth distributions, with *T. eulepidotus* most common in shallow water, *T. loennbergii* in deep water, and *T. lepidorhinus* ranging from shallow to moderately deep water (Lannoo & Eastman 2000). Specific depth ranges for these three

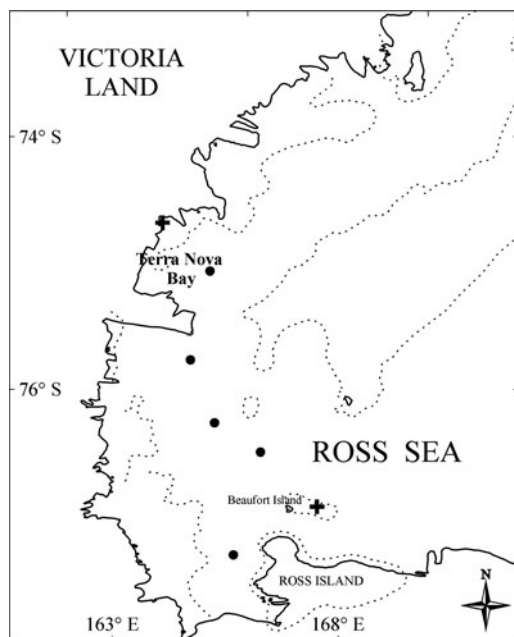


Fig. 1. Diagram of the south-western Ross Sea, showing sampling locations for *Trematomus eulepidotus* (crosses) and *T. loennbergii* (dots). Dotted line represents the 500 m isobath.

species in the Ross Sea are 130–344 m, 663–1191 m and 130–663 m, respectively (Eastman & Hubold 1999, Lannoo & Eastman 2000). One species is usually more abundant than the others, perhaps because of these depth preferences (Eastman 1993). In the Weddell and Ross seas, for example, *T. eulepidotus* is the dominant epibenthic fish in shallower depths, whereas in deeper waters it is replaced by *T. loennbergii* (Ekau 1990, Hubold 1992, Eastman & Hubold 1999, Vacchi *et al.* 1999a, Donnelly *et al.* 2004). Although the three species share the shelf habitat, they have different feeding strategies and depth preferences that overcome or partially mitigate interspecific competition.

Different reproductive strategies, consisting principally of a temporal mismatch in the spawning period (La Mesa *et al.* 2006), also reduces interspecific competition among sympatric species of *Trematomus* in the Ross Sea. For example, the benthic species *T. bernacchii* and *T. hansonii* spawn, respectively, between October–December and January–February, whereas the semipelagic *T. newnesii* spawns between March–April (Dearborn 1965, Shust 1987, Vacchi *et al.* 1996, La Mesa *et al.* 2006). Most information on the reproductive biology of epibenthic species of *Trematomus* is from specimens collected in the Weddell Sea, and analyses have been based exclusively on macroscopic examination of gonads (Ekau 1991, Duhamel *et al.* 1993). These species have not been studied in the Ross Sea. Therefore, employing both macroscopic and histologic approaches, we: 1) investigate features of the reproductive biology of *T. eulepidotus* and *T. loennbergii*

Table I. Number of fish samples available for the study.

| Cruise | Date | <i>T. loennbergii</i> | <i>T. eulepidotus</i> |
|--------|--------------|-----------------------|-----------------------|
| 96/6 | 8 Jan | 1 | |
| 97/9 | 20–28 Dec | 37 | 42 |
| 2002 | 8 Jan–13 Feb | | 12 |

from the south-western Ross Sea, and 2) compare our findings with the literature to examine the hypothesis that these species employ a common reproductive strategy to avoid interspecific competition.

Materials and methods

Samples of *T. loennbergii* were collected during cruises 96-6 and 97-9 of the RV *Nathaniel B. Palmer* in the south-western Ross Sea. Fish were caught at five stations between 663 and 1191 m depth (Fig. 1). Most specimens of *T. eulepidotus* were collected during cruise 97-9 near Beaufort Island at about 250 m depth (Fig. 1). All fish were caught by an otter trawl towed at 2–3 knots for 30–60 minutes (Eastman & Hubold 1999). A few additional samples of *T. eulepidotus* were obtained off Terra Nova Bay between 8 January and 13 February 2002, during the XVII Italian Antarctic Expedition. Fish were caught at several stations located near the Italian station (74°41'42"S, 164°07'23"E), by trammel and gill nets set down to 100 m depth. Overall data on available fish samples are summarized in Table I.

In the laboratory, each specimen was measured for total length (TL, mm) and weighed (TW, g). After dissection, sex and stage of maturity were assessed on the basis of macroscopic appearance of gonads, according to the five point scale of maturity for nototheniid fish (Everson 1977, Kock & Kellermann 1991). After this procedure, the gonads were removed and weighed on an analytical balance with an accuracy of 0.01 g (Wg, g) and then stored in 70% alcohol.

As a measure of reproductive effort and stage of gonad maturity, the gonadosomatic index was calculated as the percentage of gonad to total body weight ($GSI = 100 \times Wg/TW$) (Crim & Glebe 1990). To determine fish fecundity, all mature females (i.e. in stage 4 of macroscopic scale) were selected and their gonads processed as follows. A preliminary microscopic analysis indicated that the ovaries of these specimens exhibited a group-synchronous development, as two main cohorts of oocytes were easily distinguished by size (Wallace & Selman 1981, West 1990). As a consequence, the gravimetric method was used to estimate fecundity (Murua *et al.* 2003). According to this method, three subsamples of known weight (generally about 1 g each with an accuracy of 0.001 g) were sampled from three different parts of the ovary and the number of ripe oocytes counted under a stereomicroscope at low magnification. Hence, potential or absolute fecundity (F) was estimated applying the

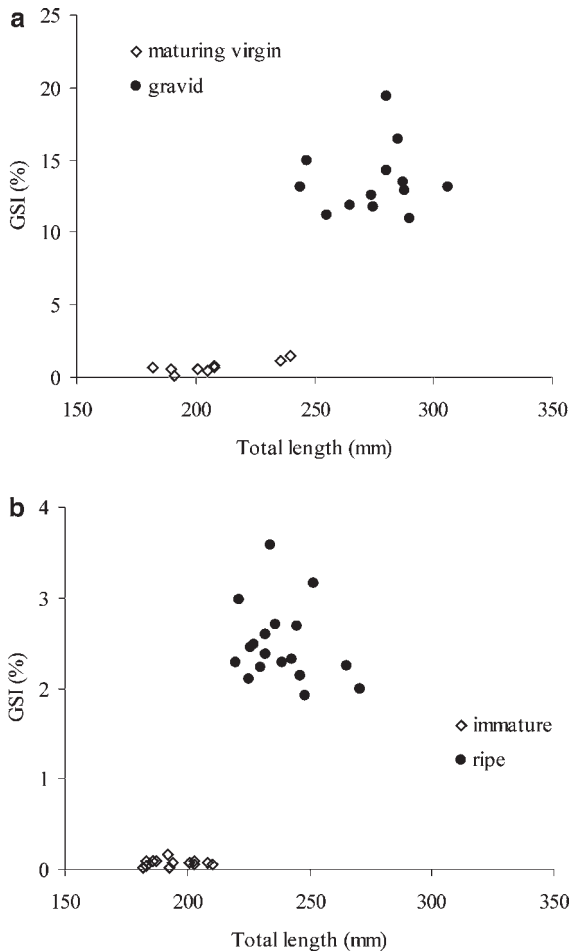


Fig. 2. Plot of gonadosomatic index (GSI) in relation to fish size and stage of gonad maturity for *Trematomus eulepidotus* **a.** females, and **b.** males.

following relationship (Kock 1989, Murua *et al.* 2003):

$$F = Wg \left[\left(\sum_i o_i/w_i \right) / n \right]$$

where *Wg* is gonad weight, *o_i* is the number of ripe oocytes in the *i*th subsample, *w_i* is the weight of *i*th subsample and *n* is the number of subsamples. A chi-square test revealed no significant differences (*P* > 0.05) for numbers of ripe oocytes per gram (*o_i/w_i*) among different parts of the ovary.

The relative fecundity (*F_r*) was calculated as number of oocytes per gram of total body weight (TW). The relationship between fish size and absolute/relative fecundity was investigated applying linear regression analysis (Kartas & Quignard 1984). Finally, in each mature female, the mean size of ripe oocytes was assessed by measuring the maximum diameter of 10 oocytes taken randomly from the subsamples used to estimate fecundity.

Based on the stage of macroscopic maturity of gonads, the proportion of individuals in stages 3–5 for each centimetre size class was recorded. The length at first spawning

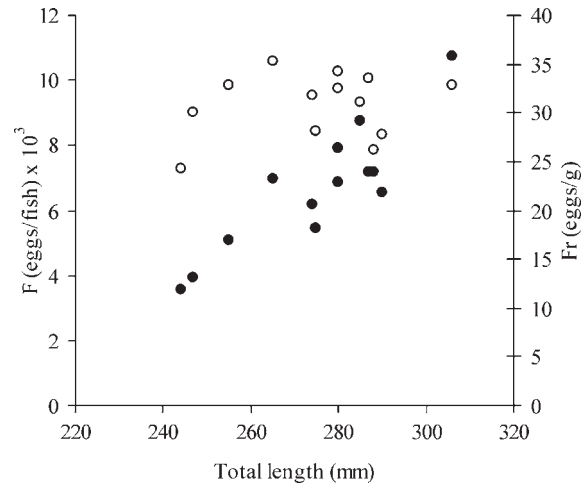


Fig. 3. Pattern of distribution of potential fecundity (*F*, ●) and relative fecundity (*Fr*, ○) in relation to fish size for *T. eulepidotus*.

(*L_{m50}*), representing the length at which 50% of the population was mature (namely at stage 3–5, Kock 1989), was determined by fitting a logistic equation to the proportion of fish in each size class (Ni & Sandeman 1984):

$$p = [1 + e^{-(\alpha + \beta TL)}]^{-1}$$

where *p* is the estimated proportion in a size class, *TL* is the total length (mm) and α and β are coefficients. The values of coefficients were obtained by linearizing the equation through log-transformation of both terms:

$$\log p/1-p = \alpha + \beta TL$$

Hence, the length at first spawning (*L_{m50}*) was estimated as the negative ratio of coefficients, $-\alpha/\beta$, by substituting *p* = 0.5 in the linear equation. Unfortunately, the few immature specimens available in our sample did not allow estimation of the length at sexual maturity (Kock 1989).

As far as the histological analysis is concerned, whole or subsamples of gonads were removed from each specimen and fixed in Bouin’s solution for 12 hours. The samples were subsequently dehydrated in ethanol and embedded in paraffin. A series of cross-sections 10 μm thick were obtained from each sample, mounted on slides and stained with Mayer’s haematoxylin-eosin following standard procedure (Beccari & Mazzi 1972). Sections were examined with a Nikon Eclipse 800 optical microscope at magnifications of 40–400x. Measurements of oocytes were made using the Nikon software package Lucia 4.51.

Ovarian follicles were classified according to six development stages: I = chromatin nucleolar, II = perinucleolar, III = cortical alveoli formation, IV = vitellogenic, V = mature, VI = postovulatory follicle (Wallace & Selman 1990, West 1990).

The relative frequency of oocytes at different histological maturity stage was obtained pooling fish in the same stage

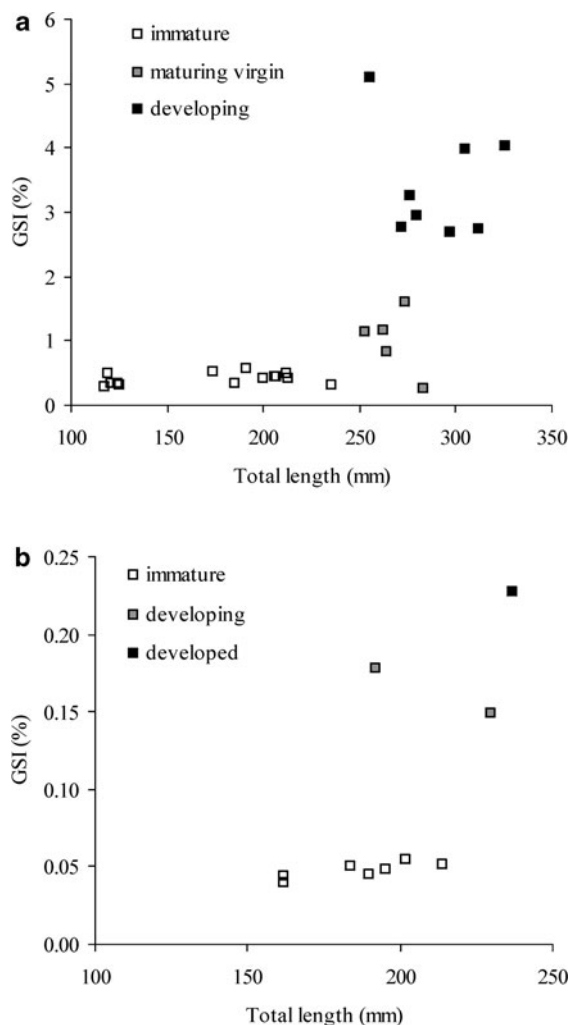


Fig. 4. Plot of gonadosomatic index (GSI) in relation to fish size and stage of gonad maturity for *Trematomus loennbergii* **a.** females, and **b.** males.

of macroscopic maturity. In addition, the size frequency distribution of oocytes was determined for each of the histological maturity stages described.

As females exhibit group synchronous ovaries (see above), each specimen was staged on the basis of the most advanced stage of development observed in the ovary sections. For each stage of development, cellular and nuclear diameters (μm) were measured on 20 oocytes (if not otherwise indicated) and nucleoplasmic indices (NP) were calculated as follows:

$$\text{NP} = \text{V}_n(\text{V}_c - \text{V}_n)^{-1}$$

where V_n is the nuclear volume and V_c is the cellular volume.

In males, the spermatogenic activity was assessed on the basis of the different types of gametocytes (from

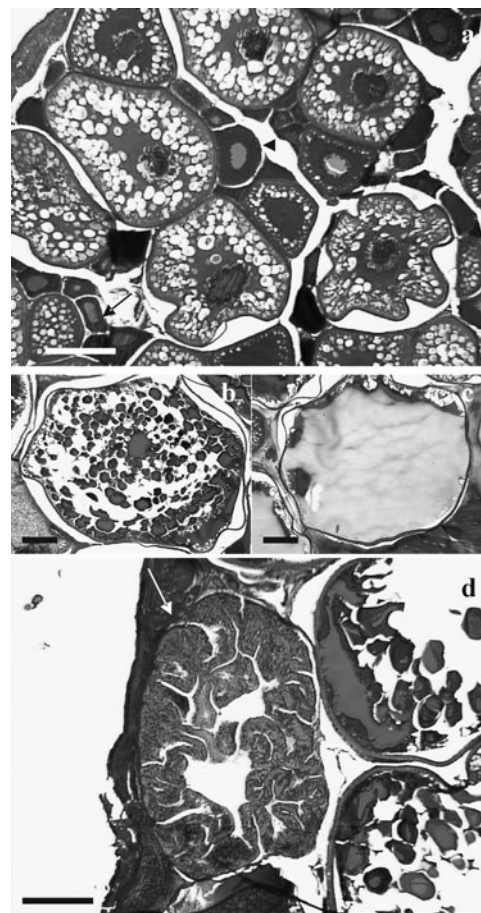


Fig. 5. Photomicrographs of histological sections of *Trematomus eulepidotus* ovarian tissue. **a.** Maturing virgin female, with ovaries filled mainly with oocytes at cortical alveoli formation stage. Presence in the ovarian stroma of several previtellogenic oocytes, respectively, at chromatin nucleolar (arrow) and perinucleolar (arrowhead) stages. **b.** Gravid female, oocyte in late vitellogenesis, with cytoplasm completely filled by yolk granules. **c.** Late vitellogenic oocyte, in which yolk granules are fused together giving the characteristic transparency. **d.** Atretic oocyte (arrow), with chorion convoluted and invaded by granulosa cells. Scale bars 250 μm in all photos.

spermatogonia to spermatozoa) in the seminiferous lobules of each testis, and also the presence of spermatogonial mitoses. Maturity of testes was evaluated according to a five-point scale (Billard 1986): I = immature stage (presence of spermatogonia and spermatogonial mitoses), II = early development stage (first meiotic division), III = advanced development stage (second meiotic division), IV = mature stage (presence of spermatozoa cysts), V = post-reproductive stage (presence of collapsed lobules and residual spermatozoa). Note that macroscopic and histologic stages of development are numbered with Roman and Arabic numerals, respectively.

Table II. Morphometry of oocytes at different stages of oogenesis (mean \pm standard error) and nucleo-plasmic index (NP) in *Trematomus eulepidotus* (above) and *T. loennbergii* (below) from the Ross Sea. See text for description of each stage of maturity.

| Stage of maturity | Cellular size (μm) | Nuclear size (μm) | NP |
|-------------------|---------------------------------|--------------------------------|-------|
| I | 75 \pm 4 | 37 \pm 2 | 0.13 |
| II | 162 \pm 10 | 71 \pm 4 | 0.09 |
| III | 480 \pm 10 | 132 \pm 3 | 0.02 |
| IV/V | 1646 \pm 27 | 213 \pm 8 | 0.002 |
| I | 62 \pm 2 | 38 \pm 1 | 0.29 |
| II | 149 \pm 3 | 82 \pm 3 | 0.20 |
| III | 440 \pm 19 | 141 \pm 6 | 0.03 |
| IV | 861 \pm 21 | 196 \pm 8 | 0.01 |

Results

Trematomus eulepidotus

Overall, 23 females ranging between 182–306 mm TL and 47–327 g TW and 31 males ranging between 182–271 mm TL and 40–208 g TW were analysed. Applying the chi-square test for goodness of fit, the sex ratio was not significantly different from unity ($\chi^2 = 1.18$, $df = 1$, $P > 0.1$). On the basis of the macroscopic appearance of gonads, 10 females between 182–240 mm TL were considered to be maturing virgins (stage 2), with a GSI range between 0.2–1.4%. All other females (13 specimens) were gravid (stage 4), attaining a GSI between 11.0–19.4%. As for males, 13 specimens were relatively small (182–210 mm TL) and immature (stage 1), with a GSI range of 0.03–0.1%. All other males (18 specimens) were ripe (stage 4), exhibiting a GSI range between 1.9–3.6%. In plots relating GSI to fish size, both sexes showed an obvious gap between different stages of gonad maturity (Fig. 2a & b).

The length at first spawning (L_{m50}) of *T. eulepidotus* estimated by fitting the logistic function to the length-at-maturity data was, respectively, 210 mm TL in males and 240 mm TL in females. The absolute fecundity (F), estimated from 13 females ranging from 244 mm TL to 306 mm TL, varied between 3550–10736 eggs per individual (mean \pm SE, 6637 \pm 535) (Fig. 3). A positive relationship was found between F and fish size, as fecundity increased significantly with increasing length of females ($F = -19331.5 + 94.4 \text{ TL}$, $n = 13$, $r^2 = 0.76$). Relative fecundity (F_r) in *T. eulepidotus* ranged between 24.3 and 35.3 eggs/g (mean \pm SE, 30.8 \pm 0.9) (Fig. 3), with little relationship with fish size.

Size of mature oocytes, as measured in gravid females (stage 4) ranged widely between 1.9 mm and 2.7 mm (mean size 2.0–2.5 mm). However, on the basis of size distribution, mature oocytes were easily distinguished from all other previtellogenic oocytes dispersed within the ovarian stroma (see below), since there were few and they were of considerably smaller size (0.2–0.6 mm).

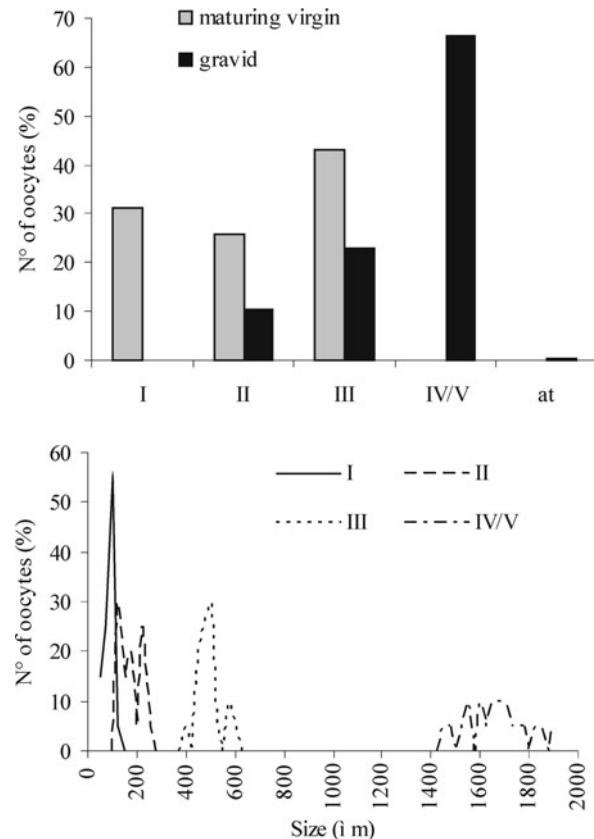


Fig. 6. Relative frequency and size frequency distribution of oocytes at different histological stages of maturity in *Trematomus eulepidotus*. I = chromatin nucleolar, II = perinucleolar, III = cortical alveoli formation, IV/V = late vitellogenic, at = atretic oocytes.

Trematomus loennbergii

A total of 37 specimens were studied, with 27 females ranging between 117–326 mm TL and 7–278 g TW and 10 males ranging between 162–237 mm TL and 23–88 g TW. The sex ratio differed significantly from unity ($\chi^2 = 7.81$, $df = 1$, $P < 0.005$). On the basis of the macroscopic gonad maturity scale, 14 females between 117–235 mm TL were immature (stage 1), with a GSI range of 0.29–0.56%, whereas five females ranging between 253–283 mm TL were maturing virgins, attaining a GSI of 0.84–1.59%. All other specimens (eight), measuring between 255–326 mm TL, were in the developing stage (stage 3), exhibiting an increased value of the GSI (2.70–5.10%). Most males (seven) were small, ranging between 162–214 mm TL, and immature (stage 1), with a GSI of 0.04–0.05%. Of the other males investigated, two fish between 192–230 mm TL in resting stage (stage 2, GSI of 0.15–0.18%), whereas only one fish was developed (stage 3), with a GSI of 0.23%. The GSI-fish size relationship for males and females, as summarized in Fig. 4a & b, shows an increasing pattern of GSI across

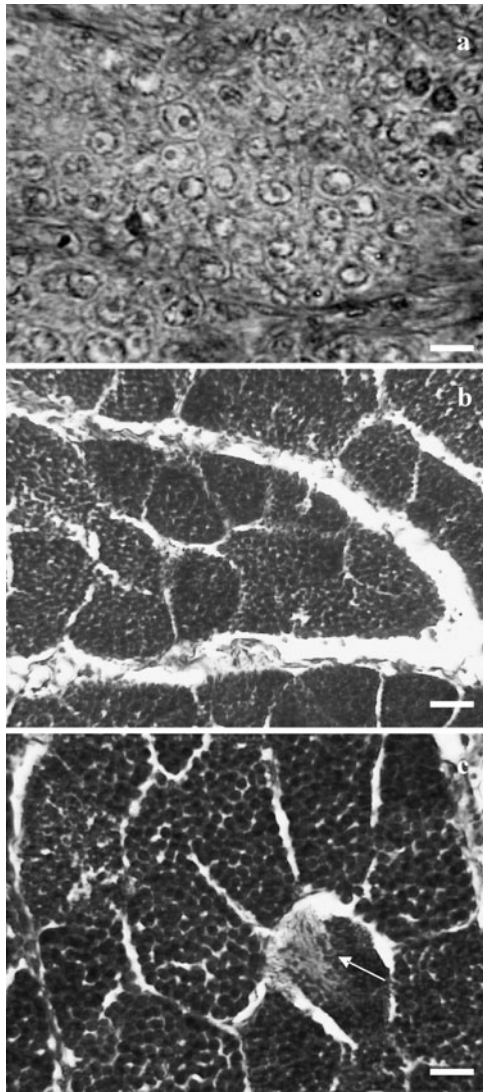


Fig. 7. Photomicrographs of histological sections of *Trematomus eulepidotus* testicular tissue. **a.** Immature male, characterized by testes made up by spermatogonial cysts with evidence of mitotic activity. Scale bar 10 μm . **b.** Early ripe male, showing testicular lobules with cysts composed of spermatocytes I and II. Scale bar 25 μm . **c.** Ripe male, with a cyst of spermatozoa beginning to fill the testicular lumen (*arrow*). Scale bar 25 μm .

the stages of gonad maturity. The length at first spawning (L_{m50}) in females, estimated by fitting the logistic function to the length-at-maturity data, was *c.* 26 cm TL. The lack of males in advanced stage of maturity (only one in stage 3) did not allow evaluation of L_{m50} . Similarly, the absence of mature females did not enable us to determine the total and relative fecundity for this species as well. Indeed, when an ovary is sampled too early in the season (i.e. not in mature females), it may not be sufficiently developed to allow the identification of all oocytes destined to be spawned, providing a biased estimate of fecundity (Murua *et al.* 2003).

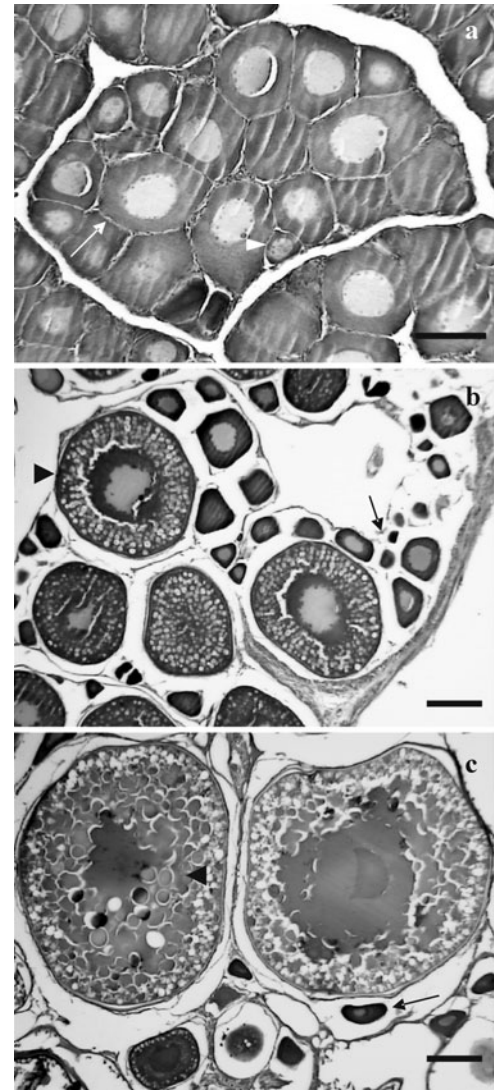


Fig. 8. Photomicrographs of histological sections of *Trematomus loennbergii* ovarian tissue. **a.** Immature female, with ovarian follicles consisting of only previtellogenic oocytes, respectively, at chromatin nucleolar (*arrowhead*) and perinucleolar (*arrow*) stages. Scale bar 100 μm . **b.** Maturing virgin female, with several previtellogenic oocytes (*arrow*) and few oocytes in endogenous vitellogenesis or cortical alveoli stage (*arrowhead*). Scale bar 200 μm . **c.** Developing female, showing two oocytes in active exogenous vitellogenesis (*arrowhead*), characterized by yolk granules filling the whole cytoplasm and a pale central nucleus, as well as previtellogenic oocytes (*arrow*). Scale bar 200 μm .

Histological analysis Trematomus eulepidotus

Histology revealed that females encompassed two development stages. Gonads of small fish (180–240 mm TL) were made up of oocytes in three stages of development, chromatin nucleolar (stage I), perinucleolar (stage II) and cortical alveoli formation (stage III)

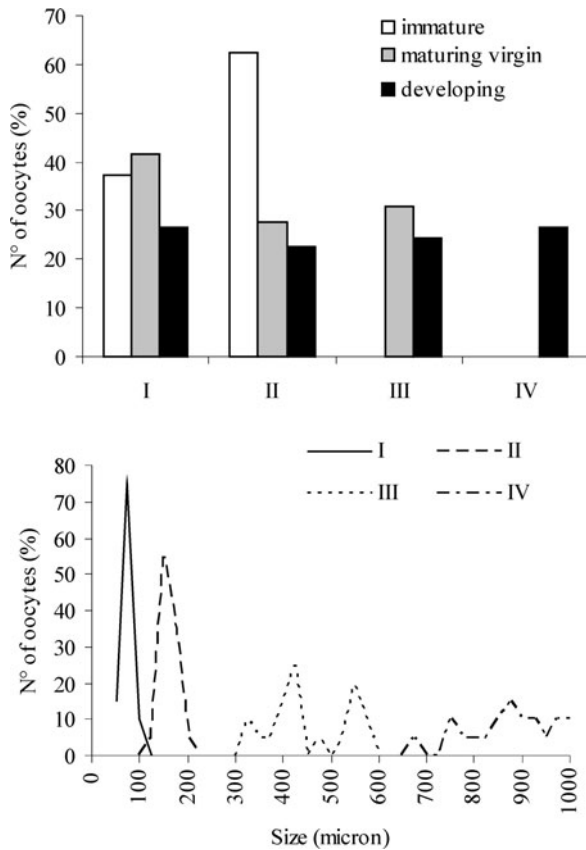


Fig. 9. Relative frequency and size frequency distribution of oocytes at different histological stages of maturity in *Trematomus loennbergii*. I = chromatin nucleolar, II = perinucleolar, III = cortical alveoli formation, IV = vitellogenic

(Fig. 5a). With maturation, cellular size increased progressively, while the nucleoplasmic ratio decreased (Table II). All other females had relatively large ovaries, filled with oocytes in late vitellogenesis (stage IV–V) and few oocytes in the previtellogenic and endogenous vitellogenic stages (II and III respectively). The cytoplasm of large yolked oocytes was completely filled by yolk granules (Fig. 5b), which in some cases were fused giving these oocytes their characteristic transparency (Fig. 5c). Occasionally, yolked oocytes underwent resorption through atretic processes (Fig. 5d). No postovulatory follicles were recorded at this stage. The size-frequency distribution of oocytes in different stages of histological maturity was markedly discontinuous (Fig. 6), confirming the presence of group-synchronous ovaries in this species.

Males were in three different stages of maturity. All specimens smaller than 210 mm TL were immature (stage I), showing testes uniformly occupied by spermatogonial cysts (Fig. 7a), with evidence of spermatogonial mitoses. All other fish showed active spermatogenesis, although they were at different stages of development. At the earlier stage, testicular lobules consisted of cysts filled with

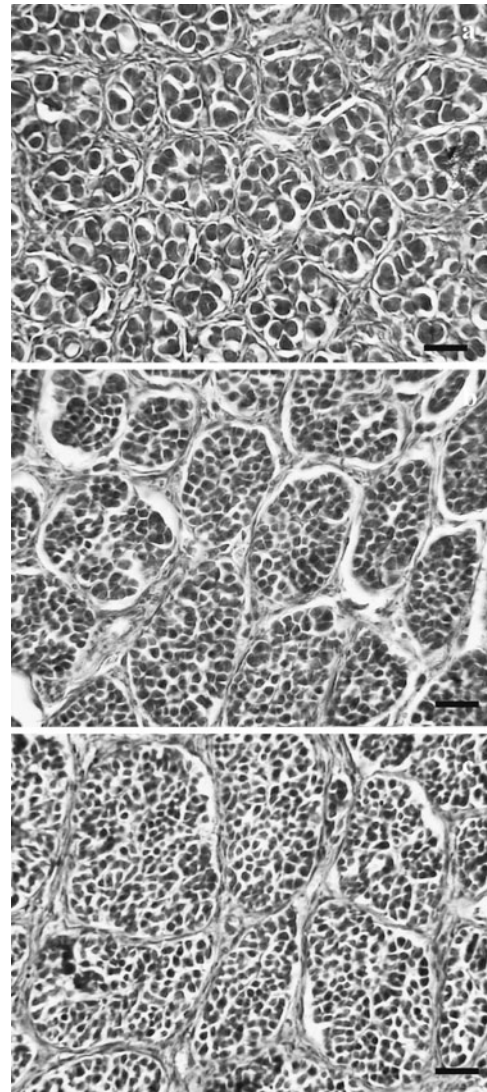


Fig. 10. Photomicrographs of histological sections of *Trematomus loennbergii* testicular tissue. **a.** Immature male, with testes filled exclusively by cysts of spermatogonia. **b.** Resting male, showing testicular lobules with cysts composed of spermatocytes I. **c.** Developed male, showing testicular lobules with spermatocytes II. Scale bars 25 μ m in all photos.

spermatocytes I and II (stage III) (Fig. 7b), whereas in more advanced stages testes had cysts of spermatozoa (Fig. 7c).

Trematomus loennbergii

Small females ranging from 117–235 mm TL were immature, with ovarian follicles composed only of previtellogenic oocytes (chromatin nucleolar and perinucleolar, stages I and II) (Fig. 8a). In some larger specimens, batches of oocytes had undergone endogeneous vitellogenesis (cortical alveoli or stage III), although ovaries still contained previtellogenic oocytes (Fig. 8b). All other females had ovaries with large

Table III. Reproductive characteristics of *Trematomus eulepidotus* in the High-Antarctic Zone.

| Site | Size range (cm) | GSI | Egg size (mm) | F (eggs/fish) | Fr (eggs/g) | Spawning period | Source |
|---------------------|-----------------|-----------|---------------|---------------|-------------|-----------------|----------------------------|
| Cosmonaut Sea | 23.0–30.0 | 16.0–31.0 | - | - | - | Feb–April | Roshchin 1991 |
| Davis & Mawson seas | 25.6–30.5 | 14.9–31.1 | 3.0–3.3 | 5907–9887 | 18–22 | March–April | Shandikov & Faleeva 1992 |
| Ross Sea | 24.4–30.6 | 11.0–19.4 | 1.9–2.7 | 3550–10 736 | 24.3–35.3 | Dec–Jan | present study |
| Scotia Sea | 27.0–31.0 | - | - | 6043–12 854 | 22–32 | - | Kock 1989 |
| Weddell Sea | - | 10.1–22.6 | 1.8–3.3 | 1400–12 300 | 12–35 | Dec–Feb | Ekau 1991 |
| Weddell Sea | 24.0–33.7 | 11.7–19.9 | 2.1–3.3 | 2448–19 337 | 14.6–35.2 | Feb–March | Duhamel <i>et al.</i> 1993 |

oocytes in early exogenous vitellogenesis (stage IV), consisting of cytoplasm filled by yolk granules and a central nucleus (Fig. 8c). At this stage of development, several previtellogenic and endogenous vitellogenic oocytes were still present (Fig. 8c), probably forming the reserve stock for the next spawning season. This is also supported by the wide gap in cellular sizes among oocytes in different stages of development (Table II), as is also the case in *T. eulepidotus*. Finally, the relative frequency and the size frequency distribution of oocytes is provided in Fig. 9.

Most male *T. loennbergii* were immature, exhibiting testicular lobules made up of cysts of spermatogonia (Fig. 10a). All other specimens had testes at an early development stage (spermatocytes I or stage II) (Fig. 10b), except for a single fish with testicular lobules filled by germinal cells in the second meiotic division (spermatocytes II), or in the late development stage (stage III) (Fig. 10c).

Discussion

As is the case for most nototheniids (Everson 1984, North & White 1987, Kock & Kellermann 1991, Duhamel *et al.* 1993), gametogenesis in both epibenthic species investigated in the present study is a slow process, starting before the current spawning season and continuing until the next spawning season one year later. Indeed, maturing or gravid females of both *Trematomus* species are characterized by having group synchronous ovaries (*sensu* Wallace & Selman 1981), in which the more advanced batch of vitellogenic (*T. loennbergii*) or mature (*T. eulepidotus*) oocytes that will be ovulated in the current spawning season are widely separated in size from the smaller previtellogenic and endogenous vitellogenic oocytes, which form the reserve stock for the next spawning season. As a result, spawning occurs once a year from sexual maturity onward (or iteroparity), as is generally reported in Antarctic fish (Vanella *et al.* 2005). On the basis of this pattern of oocyte maturation, females of both species probably release their mature eggs in a single spawning event or over a short period of time, and can be considered total spawners (Holden & Raitt 1974). This is also supported by the lack of postovulatory follicles in mature females with mature oocytes. When present, they indicate the species is a fractional spawner (Van der Molen & Matallanas 2004). As

a consequence, the relatively prolonged spawning season observed in both species (see below) is mostly due to a probable size-related difference in spawning time within local population.

Considering our results on length at first spawning and literature data (DeWitt *et al.* 1990), *T. eulepidotus* and *T. loennbergii* probably spawn for the first time relatively late in their life, i.e. at about 70–75% of their maximum length. A similar percentage was also reported for the other epibenthic species of *Trematomus*, *T. lepidorhinus* (Kock & Kellermann 1991). Such a delayed sexual maturity is a common feature in Antarctic fishes. The reproductive effort, in terms of GSI, is generally very high, reaching 20–30% in females of *T. eulepidotus* (see Table III). Thus, delayed maturity is probably the result of either the considerable energy spent during spawning or the advantage of postponing sexual maturity until achieving a size sufficiently large to feed on the most abundant food resources available in shelf waters.

The reproductive characteristics of *T. eulepidotus* are relatively well known, although most data are based only on macroscopic analysis of gonads. Most information on the reproductive biology of this species is based on specimens collected from the Weddell Sea (Lisovenko 1987, Ekau 1988, 1989, 1991, Duhamel *et al.* 1993) and from Davis and Mawson seas (Roshchin 1991, Shandikov & Faleeva 1992), where *T. eulepidotus* is the most common species amongst nototheniids collected both by benthic and midwater trawls. Additional data on absolute and relative fecundity of this species is from an Elephant Island population (Kock 1989). Summarizing this data (Table III), it appears that *T. eulepidotus* spawns in the summer over an extended period lasting from December–March, and produces 2500–20 000 eggs per season depending on fish size. Interestingly, a batch of about 2000 eggs of *T. eulepidotus* were collected in the Weddell Sea on the bottom at 200 m (Ekau 1989), confirming the assumption that the eggs of *Trematomus* are demersal.

Unlike *T. eulepidotus*, knowledge of the reproductive biology of the other epibenthic *Trematomus* species is relatively scarce and restricted to the Weddell Sea (Ekau 1991, Duhamel *et al.* 1993). In particular, *T. loennbergii* spawns about 6000–13 000 eggs per season, whereas *T. lepidorhinus* produces 2200–20 000 eggs per season.

In general the epibenthic *Trematomus* species exhibit an overall similarity in some reproductive features, including delayed maturity, prolonged gametogenesis, group synchronous oocyte development, relatively low fecundity and a single spawning event per season. However, the reproductive strategy, in terms of spawning period, differs markedly among the species, producing a mismatch in the time of appearance of larvae in the environment. The present study and literature data indicate that *T. eulepidotus* is a summer spawner, maturing in summer between December and March (Table III), whereas *T. loennbergii* and *T. lepidorhinus* spawn, respectively, in autumn (Eka 1991) or in winter (Kock & Kellermann 1991, Duhamel *et al.* 1993). Accordingly, the timing of hatching of these species, which share the same habitat as adults, shows a chronological sequence. Hatching of *T. eulepidotus* take place in May–June in the Weddell Sea (Eka 1989, Loeb *et al.* 1993), when yolk sac larvae attain 10–15 mm SL. On the other hand, hatching of *T. loennbergii* could be hypothesized to occur in spring (September–October), as some postlarvae ranging from 20–23 mm SL have been caught in the Ross Sea in late December (Vacchi *et al.* 1999b). Finally, *T. lepidorhinus* hatches in November–December, both in the Ross Sea (Vacchi *et al.* 1999b) and off the Antarctic Peninsula (Kellermann 1990).

In conclusion, during the evolutionary process of pelagization, the epibenthic species of the genus *Trematomus* developed reproductive and other strategies which serve to mitigate interspecific competition. Ecologically, they differ both in feeding habits and depth preferences, factors probably linked to each other. Although they share a common process of gonadal maturation, they differ in the timing of spawning and larval hatching, consistent with avoiding food competition among the early life history stages.

Acknowledgements

This study was financially supported by the PNRA (Italian National Antarctic Research Program). JTE was supported by National Science Foundation grant ANT 04-36190. We are very grateful to two anonymous referees for their helpful comments.

References

- ANDRIASHEV, A.P. 1970. Cryopelagic fishes of the Arctic and Antarctic and their significance in polar ecosystems. In HOLDGATE, M.W., ed. *Antarctic ecology*, vol 1. London: Academic Press, 297–304.
- BECCARI, N. & MAZZI, V. 1972. *Manuale di tecnica microscopica*. Milano: Vallardi, 366 pp.
- BILLARD, R. 1986. Spermatogenesis and spermatology of some teleost fish species. *Reproduction Nutrition Development*, **26**, 877–920.
- BRENNER, M., BUCK, B.H., CORDES, S., DIETRICH, L., JACOB, U., MINTENBECK, K., SCHRÖDER, A., BREY, T., KNUST, R. & ARNTZ, W. 2001. The role of iceberg scours in niche separation within the Antarctic fish genus *Trematomus*. *Polar Biology*, **24**, 502–507.
- CRIM, L.W. & GLEBE, B.D. 1990. Reproduction. In SCHRECK, C.B. & MOYLE, P.B., eds. *Methods for fish biology*. Bethesda: American Fisheries Society, 529–553.
- DEARBORN, J.H. 1965. Reproduction in the nototheniid fish *Trematomus bernacchii* Boulenger at McMurdo Sound, Antarctica. *Copeia*, **3**, 302–308.
- DEWITT, H.H. 1971. Coastal and deep-water benthic fishes of the Antarctic. In BUSHNELL, V.C., ed. *Antarctic map folio series*, folio 15. New York: American Geographical Society, 1–10.
- DEWITT, H.H., HEEMSTRA, P.C. & GON, O. 1990. Nototheniidae. In GON, O. & HEEMSTRA, P.C., eds. *Fishes of the Southern Ocean*. Grahamstown: JLB Smith Institute of Ichthyology, 279–331.
- DONNELLY, J., TORRES, J.J., SUTTON, T.T. & SIMONIELLO, C. 2004. Fishes of the eastern Ross Sea, Antarctica. *Polar Biology*, **27**, 637–650.
- DUHAMEL, G., KOCK, K.H., BALGUERIAS, E. & HUREAU, J.C. 1993. Reproduction in fish of the Weddell Sea. *Polar Biology*, **13**, 193–200.
- EASTMAN, J.T. 1985. *Pleuogramma antarcticum* (Pisces, Nototheniidae) as food for other fishes in McMurdo Sound, Antarctica. *Polar Biology*, **4**, 155–160.
- EASTMAN, J.T. 1993. *Antarctic fish biology: evolution in an unique environment*. San Diego, CA: Academic Press, 322 pp.
- EASTMAN, J.T. & HUBOLD, G. 1999. The fish fauna of the Ross Sea, Antarctica. *Antarctic Science*, **11**, 293–304.
- EKAU, W. 1988. Ecomorphology of nototheniid fish from the Weddell Sea, Antarctica. *Berichte für Polarforschung*, **51**, 1–140.
- EKAU, W. 1989. Egg development of *Trematomus eulepidotus* Regan, 1914 (Nototheniidae, Pisces) from the Weddell Sea, Antarctica. *Cybius*, **13**, 213–219.
- EKAU, W. 1990. Demersal fish fauna of the Weddell Sea, Antarctica. *Antarctic Science*, **2**, 129–137.
- EKAU, W. 1991. Reproduction in high Antarctic fishes (Notothenioidei). *Meeresforschung*, **33**, 159–167.
- EKAU, W. & GUTT, J. 1991. Nototheniid fishes from the Weddell Sea and their habitat, observed by underwater photography and television. *Proceedings NIPR Symposium on Polar Biology*, **4**, 36–49.
- EVERSON, I. 1977. *The living resources of the Southern Ocean*. Rome: FAO GLO/SO/77/1, 1–156.
- EVERSON, I. 1984. Fish biology. In LAWS, R.M., ed. *Antarctic ecology*, vol. 2. London: Academic Press, 491–532.
- GUTT, J. & EKAU, W. 1996. Habitat partitioning of dominant high Antarctic demersal fish in the Weddell Sea and Lazarev Sea. *Journal of Experimental Marine Biology and Ecology*, **206**, 25–37.
- HOLDEN, M.J. & RAITT, D.F.S. 1974. Manual of fisheries science. 2. Methods of resource investigation and their application. *FAO Fisheries Technical Paper*, **115**, 1–211.
- HUBOLD, G. 1992. Ecology of Weddell Sea fishes. *Berichte für Polarforschung*, **103**, 1–157.
- HUREAU, J.C. 1994. The significance of fish in the marine Antarctic ecosystems. *Polar Biology*, **14**, 307–313.
- KARTAS, F. & QUIGNARD, J.P. 1984. *La fécondité des poissons téléostéens*. Paris: Masson, 121 pp.
- KELLERMANN, A. 1990. Catalogue of early life stages of Antarctic nototheniid fishes. *Berichte für Polarforschung*, **67**, 45–136.
- KLINGENBERG, C.P. & EKAU, W. 1996. A combined morphometric and phylogenetic analysis of an ecomorphological trend: pelagization in Antarctic fishes (Perciformes: Nototheniidae). *Biological Journal of the Linnean Society*, **59**, 143–177.
- KOCK, K.-H. 1989. Reproduction in fish around Elephant Island. *Archiv für Fischereiwissenschaft*, **39**, 171–210.
- KOCK, K.-H. 1992. *Antarctic fish and fisheries*. Cambridge: Cambridge University Press, 359 pp.
- KOCK, K.-H. & KELLERMANN, A. 1991. Reproduction in Antarctic nototheniid fish - a review. *Antarctic Science*, **3**, 125–150.

- LA MESA, M., CAPUTO, V. & EASTMAN, J.T. 2006. Gametogenesis and reproductive strategies in some species of the Antarctic fish genus *Trematomus* (Nototheniidae) from Terra Nova Bay, Ross Sea. *Polar Biology*, **29**, 963–970.
- LA MESA, M., VACCHI, M., CASTELLI, A. & DIVIACCO, G. 1997. Feeding ecology of two nototheniid fishes, *Trematomus hansonii* and *Trematomus loennbergii*, from Terra Nova Bay, Ross Sea. *Polar Biology*, **17**, 62–68.
- LANNOO, M.J. & EASTMAN, J.T. 2000. Nervous and sensory system correlates of an epibenthic evolutionary radiation in Antarctic nototheniid fishes, genus *Trematomus* (Perciformes; Nototheniidae). *Journal of Morphology*, **245**, 67–79.
- LISOVENKO, L.A. 1987. Reproductive biology of Antarctic fish in relations to conditions of their habitat. In SKARLATO, O.A., ALEKSEEV, A.P. & LIUBIMOVA, T.G., eds. *Biological resources of the Arctic and Antarctic*. Moscow: Nauka, 337–357. [in Russian].
- LOEB, V.J., KELLERMANN, A., KOUBBI, P., NORTH, A.W. & WHITE, M.G. 1993. Antarctic larval fish assemblages: a review. *Bulletin of Marine Science*, **53**, 416–449.
- MURUA, H., KRAUS, G., SABORIDO-REY, F., WITTHAMES, P.R., THORSEN, A. & JUNQUERA, S. 2003. Procedures to estimate fecundity of marine fish species in relation to their reproductive strategy. *Journal of Northwest Atlantic Fisheries Science*, **33**, 33–54.
- NI, I.H. & SANDEMAN, E.J. 1984. Size at maturity for Northwest Atlantic redfishes (*Sebastes*). *Canadian Journal of Fisheries and Aquatic Sciences*, **41**, 1753–1762.
- NORTH, A.W. & WHITE, M.G. 1987. Reproductive strategies of Antarctic fish. In KULLANDER, S.O. & FERNHOLM, B., eds. *Proceedings of the V Congress of European Ichthyologists, 1985*. Stockholm, 381–390.
- PAKHOMOV, E.A. 1997. Feeding and exploitation of the food supply by demersal fishes in the Antarctic part of the Indian Ocean. *Journal of Ichthyology*, **37**, 360–380.
- PERMITIN, Y.E. & TARVERDIEVA, M.I. 1978. Feeding of fishes of the families Nototheniidae and Channichthyidae in the South Orkney Islands. *The Soviet Journal of Marine Biology*, **4**, 619–622.
- ROSHCHIN, E.A. 1991. Aspects of the life cycle of *Trematomus eulepidotus* (Nototheniidae) in the Indian Ocean sector of the Antarctic. *Journal of Ichthyology*, **31**, 1–11.
- SANCHEZ, S., DETAÏ, A., BONILLO, C., OZOUF-COSTAZ, C., DETRICH III, H.W. & LECOINTRE, G. 2007. Molecular and morphological phylogenies of the Antarctic teleostean family Nototheniidae, with emphasis on the Trematominae. *Polar Biology*, **30**, 155–166.
- SCHWARZBACH, W. 1988. Fish fauna of the eastern and southern Weddell Sea: geographic distribution, feeding, and trophic position of the various species. *Berichte für Polarforschung*, **34**, 1–94.
- SHANDIKOV, G.A. & FALIEVA, T.I. 1992. Features of gametogenesis and sexual cycles of six nototheniid fishes from East Antarctica. *Polar Biology*, **11**, 615–621.
- SHUST, K.V. 1987. Distribution and important biological aspects of abundant Antarctic nototheniid species. In SKARLATO, O.A., ALEKSEEV, A.P. & LIUBIMOVA, T.G., eds. *Biological resources of the Arctic and Antarctic*. Moscow: Nauka, 296–320. [in Russian].
- TARGETT, T.E. 1981. Trophic ecology and structure of coastal Antarctic fish communities. *Marine Ecology Progress Series*, **4**, 243–263.
- VACCHI, M., WILLIAMS, R. & LA MESA, M. 1996. Reproduction in three species of fish from the Ross Sea and Mawson Sea. *Antarctic Science*, **8**, 185–192.
- VACCHI, M., GRECO, S. & LA MESA, M. 1999a. The coastal fish fauna of Terra Nova Bay, Ross Sea. In FARANDA, F., GUGLIELMO, L. & IANORA, A., eds. *Ross Sea ecology*. Berlin: Springer, 457–468.
- VACCHI, M., LA MESA, M. & GRECO, S. 1999b. Summer distribution and abundance of larval and juvenile fishes in the western Ross Sea. *Antarctic Science*, **11**, 54–60.
- VANELLA, F.A., CALVO, J., MORRICONI, E.R. & AURELIANO, D.R. 2005. Somatic energy content and histological analysis of the gonads in Antarctic fish from the Scotia Arc. *Scientia Marina*, **69** (Sup. 2), 305–316.
- VAN DER MOLEN, S. & MATALLANAS, J. 2004. Reproductive biology of female Antarctic spiny plunderfish *Harpagifer spinosus* (Notothenioidei: Harpagiferidae), from Îles Crozet. *Antarctic Science*, **16**, 99–105.
- WALLACE, R.A. & SELMAN, K. 1981. Cellular and dynamic aspects of oocyte growth in teleosts. *American Zoologist*, **21**, 325–343.
- WALLACE, R.A. & SELMAN, K. 1990. Ultrastructural aspects of oogenesis and oocyte growth in fish and amphibians. *Journal of Electron Microscopy Techniques*, **16**, 175–201.
- WEST, G. 1990. Methods of assessing ovarian development in fishes: a review. *Australian Journal of Marine and Freshwater Research*, **41**, 199–222.
- WÖHRMANN, A.P.A. 1998. Aspects of eco-physiological adaptations in Antarctic fish. In DI PRISCO, G., PISANO, E. & CLARKE, A., eds. *Fishes of Antarctica: a biological overview*. Milan: Springer, 119–128.