

# On the relevance of Reynolds stresses in resolvent analyses of turbulent wall-bounded flows

Pierluigi Morra<sup>1</sup>, Onofrio Semeraro<sup>2</sup>, Dan S. Henningson<sup>1</sup> and Carlo Cossu<sup>3,†</sup>

<sup>1</sup>KTH Royal Institute of Technology, Linné FLOW Centre, SE-10044, Stockholm, Sweden

<sup>2</sup>LIMSI, UPR 3251 CNRS/Université Paris-Saclay, 91400 Orsay, France

<sup>3</sup>LHEEA, UMR 6598 CNRS/Centrale Nantes, 44300 Nantes, France

(Received 19 November 2018; revised 9 January 2019; accepted 28 February 2019;  
first published online 2 April 2019)

The ability of linear stochastic response analysis to estimate coherent motions is investigated in turbulent channel flow at the friction Reynolds number  $Re_\tau = 1007$ . The analysis is performed for spatial scales characteristic of buffer-layer and large-scale motions by separating the contributions of different temporal frequencies. Good agreement between the measured spatio-temporal power spectral densities and those estimated by means of the resolvent is found when the effect of turbulent Reynolds stresses, modelled with an eddy-viscosity associated with the turbulent mean flow, is included in the resolvent operator. The agreement is further improved when the flat forcing power spectrum (white noise) is replaced with a power spectrum matching the measures. Such a good agreement is not observed when the eddy-viscosity terms are not included in the resolvent operator. In this case, the estimation based on the resolvent is unable to select the right peak frequency and wall-normal location of buffer-layer motions. Similar results are found when comparing truncated expansions of measured streamwise velocity power spectral densities based on a spectral proper orthogonal decomposition to those obtained with optimal resolvent modes.

**Key words:** turbulent boundary layers

---

## 1. Introduction

Most of the fluctuating energy in wall-bounded turbulent shear flows resides in highly correlated streamwise velocity fluctuations associated with coherent streamwise streaks, i.e. spanwise alternated high- and low-velocity regions elongated in the streamwise direction. The existence of these structures is known since the visualisations of Kline *et al.* (1967) which revealed that the near-wall region of turbulent boundary layers is populated by streaks with average spanwise spacing  $\lambda_z^+ \approx 100$  in the buffer layer and higher farther from the wall. Streaky motions with larger scales have been observed in the logarithmic and the outer region where ‘large-scale’ motions (LSM) and ‘very large-scale’ motions (VLSM) have typical

<sup>†</sup> Email address for correspondence: [carlo.cossu@ec-nantes.fr](mailto:carlo.cossu@ec-nantes.fr)

spanwise spacings  $\lambda_z \approx \delta - 1.5\delta$  (where  $\delta$  is the outer length scale) and streamwise size of  $\lambda_x \approx 2\lambda_z$  (Corrsin & Kistler 1954; Kovaszny, Kibens & Blackwelder 1970) and  $\lambda_x \simeq O(10\lambda_z)$  (Komminaho, Lundbladh & Johansson 1996; Kim & Adrian 1999; Hutchins & Marusic 2007), respectively.

The ubiquity of streaks in transitional and turbulent flows has been related to the ‘lift-up’ effect where high-energy streamwise streaks are induced by low-energy quasi-streamwise vortices immersed in a shear flow (Moffatt 1967; Ellingsen & Palm 1975; Landahl 1980) via algebraic growth (Ellingsen & Palm 1975; Gustavsson 1991). The large energy amplifications associated with this mechanism have been related to the non-normality of the linearised Navier–Stokes operator (e.g. Böberg & Brosa 1988; Reddy & Henningson 1993; Trefethen *et al.* 1993) and much attention has been given to the computation of the largest (optimal) energy amplifications supported by laminar basic flows (Gustavsson 1991; Butler & Farrell 1992; Reddy & Henningson 1993; Schmid & Henningson 2001). Böberg & Brosa (1988) suggested that the subcritical onset of turbulence in wall-bounded flows can be attributed to a mechanism where the low-energy quasi-streamwise vortices leading to the amplification of high-energy streamwise streaks are then regenerated by nonlinear effects related to the breakdown of the streaks. A similar ‘self-sustained mechanism’ has been invoked by Hamilton, Kim & Waleffe (1995) to explain the dynamics of buffer-layer streaks in the turbulent regime with Waleffe (1995) and Reddy *et al.* (1998) attributing the breakdown of the streaks to a modal secondary instability and Schoppa & Hussain (2002) to a secondary non-modal energy amplification. Hwang & Cossu (2010*c*, 2011) have found evidence that similar *coherent* self-sustained processes sustain all active streaky motions, with scales ranging from those of buffer-layer streaks to those of large-scale motions.

While a relative consensus begins to emerge about the existence of self-sustained processes, there are different interpretations of the mechanisms involved in these processes in turbulent flows, and, in particular, of the nature of the linear operator intervening in the non-normal amplification mechanism. In a first approach, pursued by Malkus (1956), Butler & Farrell (1993), Farrell & Ioannou (1993*a*), McKeon & Sharma (2010) and many others, the Navier–Stokes equations are rewritten in terms of perturbations to the turbulent mean velocity; the instantaneous and averaged (Reynolds stresses) perturbation nonlinear terms are accounted for as an external input which forces the response via the linear operator. In the second approach, initiated by Reynolds & Tiederman (1967), Reynolds & Hussain (1972) and pursued by Bottaro, Souied & Galletti (2006), del Álamo & Jiménez (2006), Cossu, Pujals & Depardon (2009), Pujals *et al.* (2009), Hwang & Cossu (2010*a,b*) among others, the ‘incoherent’ part of turbulent Reynolds stresses is included in the linear operator by means of a  $\nu_t$  eddy-viscosity model. We will refer to the latter approach as ‘ $\nu_t$ -model’ and to the former as ‘ $\nu$ -model’ (where  $\nu$  is the molecular kinematic viscosity).

An important number of investigations have dealt with the computation of optimal energy amplifications and of the associated optimal inputs and outputs for the linear initial-value problem and the response to harmonic and stochastic forcing. While a review of this research effort and of the respective merits attributed to the  $\nu$  and  $\nu_t$  formulations is beyond the scope of this paper (we refer the reader to McKeon 2017; Cossu & Hwang 2017, for a summary of recent results), it appears that most of the comparisons between linear models predictions and real turbulent flows are either qualitative or concern wall-normal integrated energy densities and the reproduction of spatial spectra (the Fourier transform of the second-order velocity spatial correlations). Also, with very few exceptions (e.g. Illingworth, Monty & Marusic 2018), these analyses very often focus only on the most amplified modes without resulting in a detailed quantitative comparison of the performance of the  $\nu$  and  $\nu_t$  models.

A similar situation has emerged in the evaluation of the performance of Karhunen–Loève decompositions (proper orthogonal decompositions, POD) in the approximation of the power spectral density. In this context it has been recognised that the aggregation of all frequencies in the analysis, typically used when only spatial correlations are estimated, often blurs the interpretation of the results. It has hence been suggested to analyse separately each contributing frequency by making use of the Fourier transform of the spatio-temporal correlation tensor  $\mathbf{R}(\mathbf{x}, \mathbf{x} + \Delta\mathbf{x}, t, t + \tau)$  and the associated ‘spectral’ POD modes (Lumley 1970; Picard & Delville 2000). It has then been highlighted that a strong relation exists between these spectral POD (SPOD) modes and those issued from the Schmidt (singular value, SVD) decomposition of the resolvent operator (Semeraro *et al.* 2016; Towne, Schmidt & Colonius 2018). However, in those investigations, only the performance of the resolvent analysis based on the  $\nu$ -model was evaluated.

The scope of the present study, inspired by the approach recently revived in the context of POD analyses, is therefore to evaluate the respective performance of the  $\nu$ -model and the  $\nu_t$ -model in the estimation of the velocity spatio-temporal power spectral density and power cross-spectral density. The turbulent channel flow at the friction Reynolds number  $Re_\tau = 1007$  is used as a testbed for this analysis.

The paper is organised as follows: the mathematical formulation of the problem addressed is briefly summarised in §2. The turbulent channel flow obtained by direct numerical simulation and the relevant spectral information are described in §3 and compared to the estimations obtained via the resolvent-based models in §4. The results are summarised and discussed in §5. Further details on the operators involved in the resolvent-based models and on the data analysis of direct numerical simulation data are provided in appendix A and B, respectively.

## 2. Background

### 2.1. Linear models for the dynamics of turbulent fluctuations

We are interested in the dynamics of coherent perturbations in a pressure-driven turbulent channel flow of incompressible viscous fluid with density  $\rho$ , kinematic viscosity  $\nu$  between two infinite parallel walls located at  $y = \pm h$ . Here, we denote by  $x$ ,  $y$  and  $z$  the streamwise, wall-normal and spanwise coordinates, respectively. In the following we will consider dimensionless variables based on the reference length  $h$  and the reference velocity  $(3/2)U_{bulk}$ , where  $U_{bulk}$  is the constant mass-averaged streamwise velocity.

Following Reynolds & Tiederman (1967), Reynolds & Hussain (1972), del Álamo & Jiménez (2006), Pujals *et al.* (2009) and many others, the evolution of small coherent perturbations to the turbulent mean flow can be modelled with linearised equations which include the effect of the turbulent Reynolds stresses in the linear model by means of an eddy viscosity  $\nu_t$  corresponding to the turbulent mean flow profile  $\mathbf{U} = (U(y), 0, 0)$ :

$$\frac{\partial \mathbf{u}}{\partial t} + \nabla \mathbf{u} \cdot \mathbf{U} + \nabla \mathbf{U} \cdot \mathbf{u} = -\frac{1}{\rho} \nabla p + \nabla \cdot [\nu_T (\nabla \mathbf{u} + \nabla \mathbf{u}^T)] + \mathbf{f}, \quad (2.1)$$

where  $\mathbf{u} = (u, v, w)$  and  $p$  are the coherent perturbation velocity and pressure,  $\nu_T(y) = \nu + \nu_t(y)$  is the total effective viscosity and  $\mathbf{f}$  is the forcing term (note that in dimensionless units  $\nu_T = (1 + \nu_t/\nu)/Re$ , where  $Re = (3/2)U_{bulk}h/\nu$ ). These equations are completed by the incompressibility condition  $\nabla \cdot \mathbf{u} = 0$ .

For the eddy viscosity, we adopt the semi-empirical expression proposed by Cess (1958), as reported by Reynolds & Tiederman (1967):

$$\frac{\nu_t}{\nu} = \frac{1}{2} \left\{ 1 + \frac{\kappa^2 Re_\tau^2}{9} (1 - y^2)^2 (1 + 2y^2)^2 (1 - e^{y^+/A})^2 \right\}^{1/2} - \frac{1}{2}, \tag{2.2}$$

where  $y \in [-1, 1]$  is the centre-channel-based dimensionless wall-normal coordinate,  $y^+ = Re_\tau(1 - |y|)$  and  $Re_\tau = u_\tau h/\nu$  is the Reynolds number based on the friction velocity  $u_\tau$ . We set the von Kármán constant  $\kappa = 0.426$  and the constant  $A = 25.4$  as in Pujals *et al.* (2009), Hwang & Cossu (2010*b*). In the following we will refer to this model as the ‘ $\nu_t$ -model’.

In an alternative approach, used e.g. by Butler & Farrell (1993), Farrell & Ioannou (1993*b*), McKeon & Sharma (2010) and many others, turbulent Reynolds stresses and nonlinear terms are both included in the forcing term  $\mathbf{f}$  (which is therefore different from the forcing term of the  $\nu_t$ -model) so that the linear model reduces to (2.1) but now only including the molecular kinematic viscosity  $\nu_T = \nu$ . We will refer to this model as ‘ $\nu$ -model’ (also known as ‘quasi-laminar model’).

### 2.2. Analyses of harmonic and stochastic forcing

Since the mean flow is homogeneous in the streamwise and spanwise directions, we consider the Fourier modes  $\hat{\mathbf{u}}(\alpha, y, \beta, t)e^{i(\alpha x + \beta z)}$  and  $\hat{\mathbf{f}}(\alpha, y, \beta, t)e^{i(\alpha x + \beta z)}$  of streamwise and spanwise wavenumbers  $\alpha = 2\pi/\lambda_x$  and  $\beta = 2\pi/\lambda_z$ . Equation (2.1) can be reduced to the following linear system, expressed in terms of the state vector  $\hat{\mathbf{q}} = [\hat{v}, \hat{\omega}_y]^T$  formed with the wall-normal components of the velocity and vorticity Fourier modes:

$$\frac{\partial \hat{\mathbf{q}}}{\partial t} = \mathbf{A}\hat{\mathbf{q}} + \mathbf{B}\hat{\mathbf{f}}, \tag{2.3}$$

where  $\hat{\mathbf{u}} = \mathbf{C}\hat{\mathbf{q}}$  and  $\hat{\mathbf{q}} = \mathbf{D}\hat{\mathbf{u}}$  (the explicit expressions of the operators  $\mathbf{A}$ ,  $\mathbf{B}$ ,  $\mathbf{C}$  and  $\mathbf{D}$  are given in appendix A). As the system (2.3) is linearly stable (Reynolds & Tiederman 1967), the response to deterministic finite-power forcing can be analysed by Fourier transforming the linear system in time, hence considering the harmonic forcing  $\hat{\mathbf{f}} = \tilde{\mathbf{f}}e^{-i\omega t}$  with the harmonic response  $\tilde{\mathbf{u}}e^{-i\omega t}$  related by:

$$\tilde{\mathbf{u}} = \tilde{\mathbf{H}}\tilde{\mathbf{f}}; \quad \mathbf{H} = -\mathbf{C}(i\omega\mathbf{I} + \mathbf{A})^{-1}\mathbf{B} \tag{2.4a,b}$$

where  $\mathbf{H}$  is the resolvent operator (or transfer function). When system (2.3) is driven by stochastic forcing, the response is also stochastic. For the considered horizontally and time invariant problem the velocity second-order spatio-temporal correlation tensor is defined as

$$\mathbf{R}(\xi, y, y', \zeta, \tau) = \langle \mathbf{u}(x, y, z, t)\mathbf{u}^*(x + \xi, y', z + \zeta, t + \tau) \rangle, \tag{2.5}$$

where  $\langle \rangle$  denotes ensemble averaging and  $*$  denotes complex conjugate transpose. The (spatio-temporal) power cross-spectral density tensor is obtained through Fourier transform in the horizontal plane and time:

$$\mathbf{S}(\alpha, y, y', \beta, \omega) = \frac{1}{(2\pi)^3} \int_{-\infty}^{\infty} \int_{-\infty}^{\infty} \int_{-\infty}^{\infty} \mathbf{R}(\xi, y, y', \zeta, \tau) e^{i(\alpha\xi + \beta\zeta - \omega\tau)} d\xi d\zeta d\tau. \tag{2.6}$$

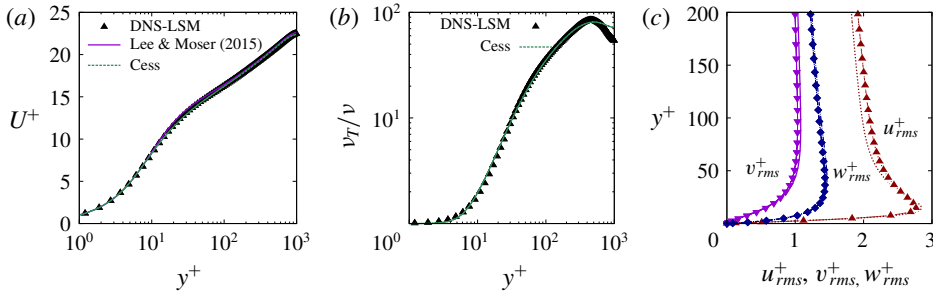


FIGURE 1. (Colour online) Comparison of direct numerical simulations in the LSM flow unit (direct numerical simulation-LSM, DNS-LSM) at  $Re_\tau = 1007$  to those (L&M) of Lee & Moser (2015) and to Cess’s model at  $Re_\tau = 1000$ : (a) mean flow profile, (b) effective turbulent viscosity  $\nu_T = \nu_t + \nu$  corresponding to the mean flow profile and (c) root-mean-square (r.m.s.) velocity profiles from the DNS-LSM (lines with symbols) compared to those of L&M (lines).

The velocity power cross-spectral density tensor  $\mathbf{S}$  can also be obtained directly as the average of the Fourier transform  $\tilde{\mathbf{u}}$  of the velocity (e.g. Bendat & Piersol 1986) and the stochastic forcing power cross-spectral density tensor  $\mathbf{P}$  can be defined similarly:

$$\mathbf{S} = \langle \tilde{\mathbf{u}}(\alpha, y, \beta, \omega) \tilde{\mathbf{u}}^*(\alpha, y', \beta, \omega) \rangle; \quad \mathbf{P} = \langle \tilde{\mathbf{f}}(\alpha, y, \beta, \omega) \tilde{\mathbf{f}}^*(\alpha, y', \beta, \omega) \rangle. \quad (2.7a,b)$$

An estimation  $\mathbf{S}^{(est)} = \mathbf{H}\mathbf{P}\mathbf{H}^*$  of the velocity power cross-spectral density tensor is obtained by making use of the linear models by replacing the linear expression of (2.4a,b) in (2.7a,b). If it is assumed that  $\tilde{\mathbf{f}}$  is  $\delta$  correlated in the wall-normal direction  $y$ , with decorrelated components (see e.g. Farrell & Ioannou 1993a; Hwang & Cossu 2010a,b), then  $\mathbf{P} = p(\alpha, \beta, \omega) \mathbf{I}$  (where  $\mathbf{I}$  is the identity operator). This assumption, which has been made in a number of previous studies, underlies the so-called resolvent analysis because in this case  $\mathbf{S}^{(est)}$  reduces to:

$$\mathbf{S}^{(res)} = p\mathbf{H}\mathbf{H}^*. \quad (2.8)$$

The scope of this study is to explore the validity of the estimation provided by (2.8).

### 3. Direct numerical simulations in a LSM flow unit

The turbulent channel flow has been simulated at  $Re_\tau = 1007$  in a domain  $L_x = 3$  long and  $L_z = 1.5$  wide in order to focus on the physics of the near-wall and large-scale processes only and to keep the data processing manageable. This domain size also corresponds to that of the most energetic large-scale motions (LSM) in the channel (del Álamo *et al.* 2004) and represents the minimum flow unit for the self-sustainment of coherent LSM (Hwang & Cossu 2010c).

We have verified that the computed mean flow and the root-mean-square (r.m.s.) fluctuation profiles are in reasonable agreement with those of Lee & Moser (2015) obtained in the much larger domain  $L_x = 25, L_z = 9.5$  as shown in figure 1. We have further verified that Cess’s analytic fit works well by comparing the mean flow profile and the corresponding eddy viscosity to the ones issued by DNS data. It should be remarked that the values of the eddy viscosity are small in the near-wall region but very large in the bulk of the flow where  $\nu_T/\nu \sim O(10 - 100)$  at the considered  $Re_\tau$ .

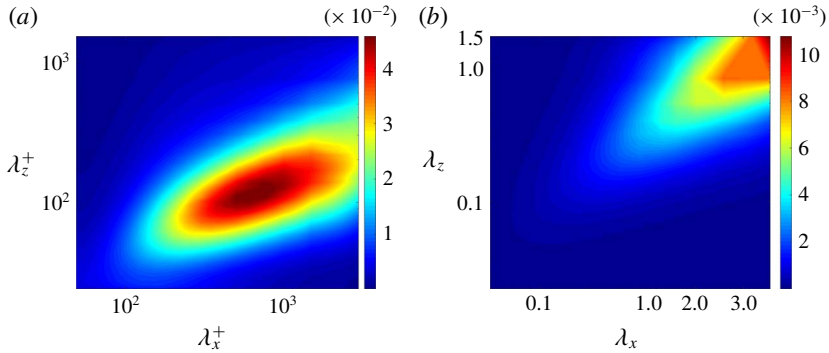


FIGURE 2. (Colour online) Premultiplied streamwise energy spectra  $\alpha\beta E_{uu}$  in the  $y^+ = 15$  plane (a) and the  $y = 0.5$  plane (b). Data from the direct numerical simulation (DNS) in the LSM flow unit at  $Re_\tau = 1007$ .

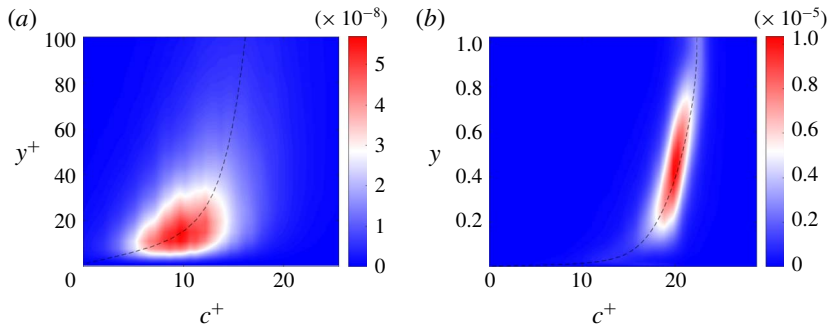


FIGURE 3. (Colour online) Wall-normal profiles of the streamwise velocity power spectral density  $\langle \tilde{u}(\alpha, y, \beta, \omega) \tilde{u}^*(\alpha, y, \beta, \omega) \rangle$  versus the phase speed  $c^+ = \omega^+/\alpha^+$  for (a) buffer-layer structures with  $\lambda_x^+ = 450, \lambda_z^+ = 100$  and (b) large-scale structures with  $\lambda_x = 3, \lambda_z = 1.5$ . The mean velocity profile  $U^+$  is reported as a dashed black line. Data from the direct numerical simulation in the LSM flow unit at  $Re_\tau = 1007$ .

The premultiplied streamwise kinetic energy spectral density  $\alpha\beta E_{uu}(\alpha, y, \beta) = \alpha\beta \int_{-\infty}^{\infty} S_{uu}(\alpha, y, \beta, \omega) d\omega$ , evaluated in the  $y^+ = 15$  and  $y = 0.5$  planes, is shown in figure 2. As expected, the most energetic structures at  $y = 0.5$  have spatial scales corresponding to the dimensions of the LSM flow unit  $\lambda_x = L_x = 3, \lambda_z = L_z = 1.5$  (corresponding to  $\alpha \approx 2, \beta \approx 4$ ). The most energetic structures at  $y^+ = 15$  have spatial scales  $\lambda_x^+ \approx 450$  and  $\lambda_z^+ \approx 100$  (corresponding to  $\alpha \approx 14, \beta \approx 63$  at  $Re_\tau = 1007$ ) typical of the near-wall self-sustained process. In the following we will therefore concentrate on these two sets of wavenumbers  $(\alpha, \beta)$ , corresponding to  $(\lambda_x = 3, \lambda_z = 1.5)$  and  $(\lambda_x^+ = 450, \lambda_z^+ = 100)$ , which represent the dynamics of large-scale and near-wall self-sustained motions, respectively.

The power cross-spectral density tensor has been computed for the two considered  $(\alpha, \beta)$  pairs by means of Welch’s method (see e.g. Bendat & Piersol 1986), as detailed in appendix B. In figure 3 we report the streamwise velocity power spectral density profiles  $S_{uu}(\alpha, y, \beta, \omega) = \langle \tilde{u}(\alpha, y, \beta, \omega) \tilde{u}^*(\alpha, y, \beta, \omega) \rangle$  as a function of the phase speed  $c = \omega/\alpha$ , expressed in wall units, and of the wall-normal coordinate for the considered  $(\alpha, \beta)$  pairs. The peaks of these distributions are found at  $\omega_{max} = 4.3$

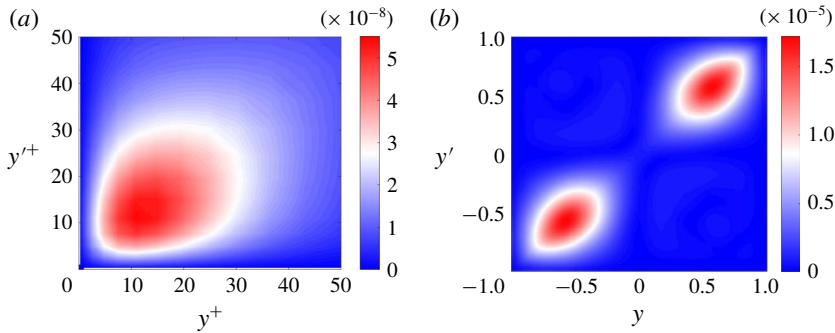


FIGURE 4. (Colour online) Absolute value of the streamwise velocity power cross-spectral density  $|\langle \tilde{u}(\alpha, y, \beta, \omega_{max}) \tilde{u}^*(\alpha, y', \beta, \omega_{max}) \rangle| = |S_{uu}(\alpha, y, y', \beta, \omega_{max})|$  for (a) near-wall structures with  $\lambda_x^+ = 450, \lambda_z^+ = 100$  at the power spectral density peak value  $\omega_{max} = 4.3$  and (b) large-scale structures with  $\lambda_x = 3, \lambda_z = 1.5$  at the power spectral density peak value  $\omega_{max} = 1.4$ . Data from the direct numerical simulation in the LSM flow unit at  $Re_\tau = 1007$ .

and  $\omega_{max} = 1.4$  for the near-wall and large-scale peaks, respectively. These peaks correspond to the two phase velocities  $c_{max}^+ \approx 10$  and  $c_{max}^+ \approx 20$  and their wall-normal locations ( $y_{max}^+ \approx 15$  and  $y_{max} \approx 0.4-0.5$ ) approximately correspond to the wall-normal position where  $U^+ = c^+$ .

The  $S_{uu}(\alpha, y, y', \beta, \omega) = \langle \tilde{u}(\alpha, y, \beta, \omega) \tilde{u}^*(\alpha, y', \beta, \omega) \rangle$  streamwise velocity power cross-spectral densities, are reported, for later comparison, in figure 4 as a function of  $y$  and  $y'$  for the considered  $(\alpha, \beta)$  at the peak  $\omega_{max}$  corresponding to each pair.

#### 4. Estimations of power cross-spectral density based on linear models

##### 4.1. Estimations of the power cross-spectral density

We now evaluate the capacity of the linear models of the coherent structure dynamics to reproduce statistics of the turbulent flow via the estimation  $\mathbf{S}^{(res)} = p\mathbf{H}\mathbf{H}^*$  given by (2.8) using both the  $v_i$  and the  $v$  models to build the resolvent  $\mathbf{H}$ .

As a first case, we assume that the temporal power spectrum of the forcing is flat i.e. that  $p$  does not depend on  $\omega$  (white-noise assumption) and  $p = \bar{p}$  is chosen such that the estimated total spectral power of the streamwise velocity matches the one issued from direct numerical simulations  $\int_{-\infty}^{\infty} \int_{-1}^1 S_{uu}^{(est)}(\alpha, y, y, \beta, \omega) dy d\omega = \int_{-\infty}^{\infty} \int_{-1}^1 S_{uu}^{(dns)}(\alpha, y, y, \beta, \omega) dy d\omega$ . As a second case, we remove the white-noise assumption and determine  $p$  (which depends now on  $\omega$ ) such that the estimated power of the streamwise velocity matches that issued from direct numerical simulations at each selected frequency  $\omega$ :  $\int_{-1}^1 S_{uu}^{(est)}(\alpha, y, y, \beta, \omega) dy = \int_{-1}^1 S_{uu}^{(dns)}(\alpha, y, y, \beta, \omega) dy$ . We will refer to this second case as ‘coloured’ noise (see e.g. Zare, Jovanović & Georgiou 2017).

In figures 5 and 6 we show, analogously to figure 3, the  $y$ -profiles of the estimated streamwise velocity power spectral density versus the phase speed  $c^+$ .

The cases where the estimation is based on the  $v$ -model to compute the resolvent are reported in figure 5. For the case with white-noise (flat-spectrum) stochastic forcing (panels a and b), the  $v$ -model does not select the correct values and locations of the power spectral density peaks, which are predicted to be near the channel centre, and therefore are predicted at too large  $c^+$  values (and therefore too large

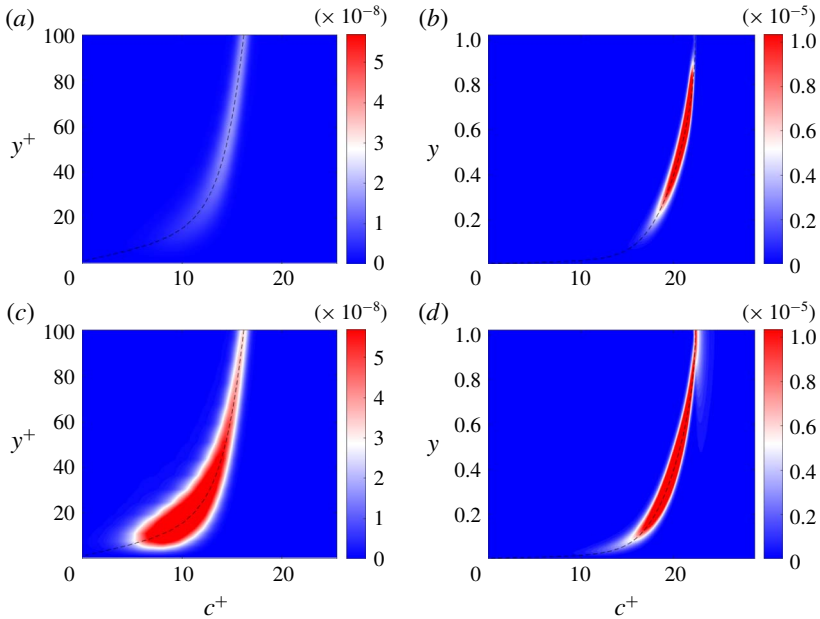


FIGURE 5. (Colour online) Linear  $\nu$  model estimation of the streamwise velocity power spectral density  $\langle \tilde{u}(y)\tilde{u}^*(y) \rangle$  versus the phase speed  $c^+$  with (white-noise) flat-spectrum stochastic forcing (a,b) and coloured-noise stochastic forcing (b,d) for the near-wall structures with  $\lambda_x^+ = 450, \lambda_z^+ = 100$  (a,c) and the large-scale structures with  $\lambda_x = 3, \lambda_z = 1.5$  (b,d). The mean velocity profile  $U^+$  is reported as a dashed black line. The colour scale is the same as the one used to represent direct numerical simulations data in figure 3.

$\omega$  values). For both near-wall and large-scale structures the power spectral density appears also to be too narrowly concentrated near the critical layer (where  $U^+ = c^+$ ) when compared to the DNS data of figure 3. The estimation improves for the case of coloured noise (panels c and d), where the selective power spectrum of the forcing is able to drive the response peaks nearer their DNS values. However, even in this case the power spectral density spatial distributions remain too narrowly concentrated and therefore too large near the critical layer curves (the uniform dark red regions in panels b, c and d which are strongly offscale).

As shown in figure 6, the use of the  $\nu_t$  model leads to a significant improvement because the effective eddy diffusivity dampens the response near the channel centre (where the eddy viscosity is high) and smoothens the critical layer peaks. Even with (non-selective, flat spectrum) white-noise stochastic forcing (panels a and b), the  $\nu_t$ -model is able to select a reasonable  $y_{max}^+ - c_{max}^+$  location of the cross-spectral peak for buffer-layer structures. For large-scale structures (panel b), however, the amplitude of the response is still over-predicted near the channel centre and near the wall.

The estimation provided by the  $\nu_t$  model further improves when the coloured-spectrum forcing is used (panels c and d). A significant improvement is obtained, in particular, for the large-scale case (panel d) where the streamwise velocity power spectral density is not too large near the wall and the channel centre and has a well-defined peak located at reasonable  $y_{max}$  and  $c_{max}^+$  values.

These observations are further supported by the examination of streamwise velocity power cross-spectral density  $S_{uu}(\alpha, y, y', \beta, \omega) = \langle \tilde{u}(\alpha, y, \beta, \omega)\tilde{u}^*(\alpha, y', \beta, \omega) \rangle$  which



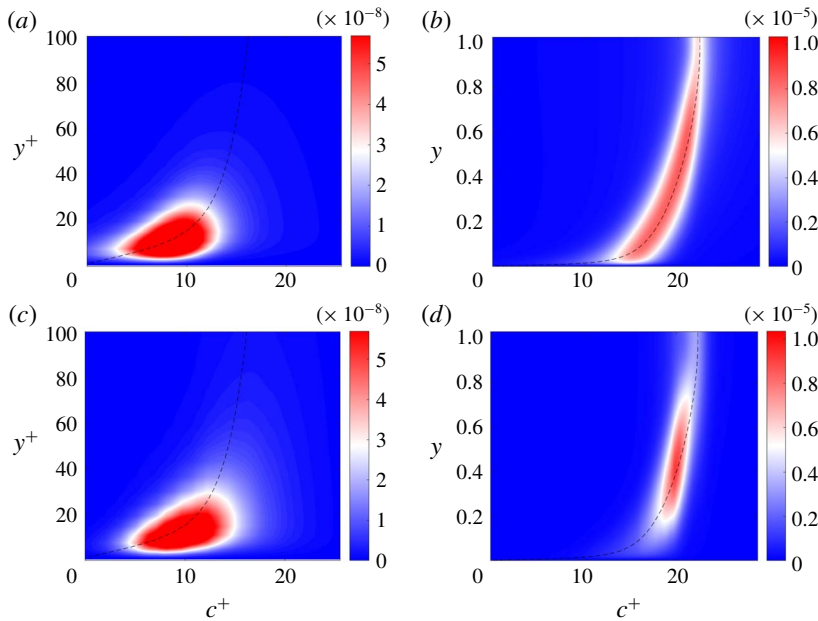


FIGURE 6. (Colour online) Linear  $\nu_t$ -model estimation of the streamwise velocity power spectral density  $\langle \bar{u}(y)\bar{u}^*(y) \rangle$  versus the phase speed  $c^+$  with (white-noise) flat-spectrum stochastic forcing (a,b) and coloured-noise stochastic forcing (b,d) for the near-wall structures with  $\lambda_x^+ = 450$ ,  $\lambda_z^+ = 100$  (a,c) and the large-scale structures with  $\lambda_x = 3$ ,  $\lambda_z = 1.5$  (b,d). The mean velocity profile  $U^+$  is reported as a dashed black line. The colour scale is the same as the one used to represent direct numerical simulations data in figure 3.

are shown in figure 7 as a function of  $y$  and  $y'$  for the same  $(\alpha, \beta)$  and  $\omega_{max}$  values already considered in figure 4. Also in this case, the  $\nu$ -model predicts too ‘narrow’ and too large power cross-spectral density distributions which decay too fast from their peak location while the  $\nu_t$  model is able to estimate reasonably well the power cross-spectral density issued from the DNS data.

#### 4.2. Expansion on SPOD and resolvent modes

Great attention has been given recently to the use of highly truncated expansions of the velocity power spectral density based on resolvent and spectral POD (SPOD) modes. Even if the main focus of this paper is not on these expansions, we find it useful to briefly examine the relevance of using the  $\nu_t$  or the  $\nu$  models in their computation.

Considering, for simplicity, only the streamwise velocity correlations, the spectral POD modes are the set of eigenfunctions  $\psi_j^{(SPOD)}(y)$  of the self-adjoint operator  $S_{uu}^{(dns)}$  ordered by decreasing corresponding real eigenvalues  $e_j^{(SPOD)}$  (Lumley 1970; Picard & Delville 2000; Semeraro *et al.* 2016; Towne *et al.* 2018). These modes are orthonormal in the inner product associated with the power norm and therefore each SPOD eigenvalue, when normalised with respect to the sum of all eigenvalues, represents the fraction of the power associated with the corresponding SPOD mode. Thus, a salient property of the SPOD modes is that they provide the orthonormal

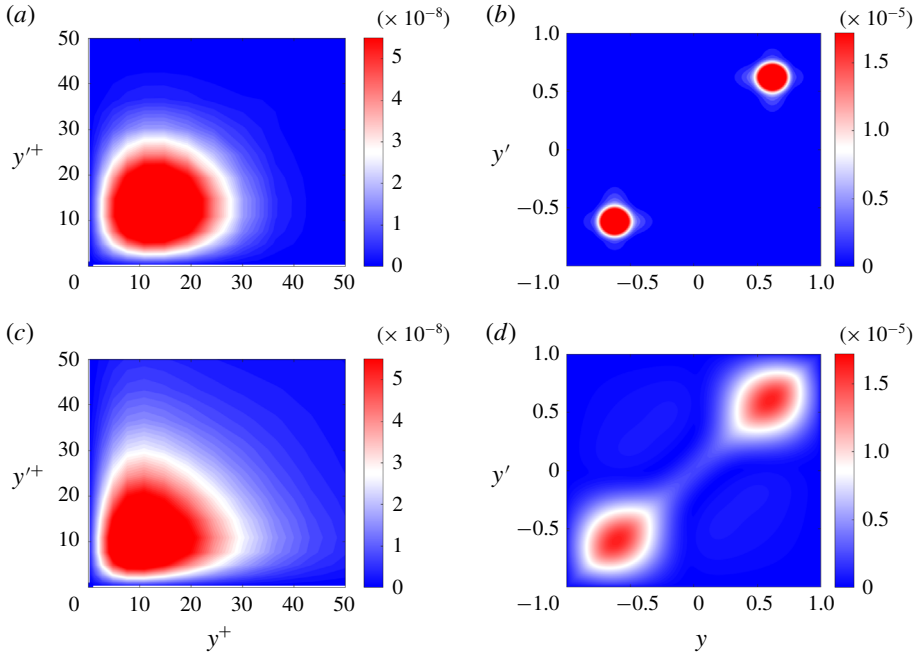


FIGURE 7. (Colour online) Absolute value of the streamwise velocity power cross-spectral density  $|\langle \tilde{u}(\alpha, y, \beta, \omega_{max}) \tilde{u}^*(\alpha, y', \beta, \omega_{max}) \rangle| = |S_{uu}(\alpha, y, y', \beta, \omega_{max})|$  estimated by means of the  $\nu$ -model (a,b) and of the  $\nu_t$ -model (c,d) for near-wall structures with  $\lambda_x^+ = 450$ ,  $\lambda_z^+ = 100$  at the peak frequency  $\omega = 4.3$  (a,c) and large-scale structures with  $\lambda_x = 3$ ,  $\lambda_z = 1.5$  at the peak frequency  $\omega = 1.4$  (b,d). The same colour scale as in figure 4 is used.

basis of functions which is optimal (in terms of spectral power) for the expansion of the streamwise velocity coherent fluctuations.

Analogously, the resolvent modes  $\psi_j^{(res)}(y)$  are the set of (orthonormal) eigenfunctions of  $S_{uu}^{(res)}$  ordered by decreasing respective real eigenvalues  $e_j^{(res)}$  and, in the present contest, they represent an estimation of the SPOD modes, under the assumption that  $\mathbf{P} = p\mathbf{I}$ . The leading resolvent eigenvalue  $e_1^{(res)} = p\|\mathbf{H}\|^2$  also represents the optimal power amplification (modulo  $p$ ) of the forcing supported by the resolvent operator  $\mathbf{H}$  (see e.g. Trefethen *et al.* 1993; Schmid & Henningson 2001).

We therefore examine the two already considered  $(\alpha, \beta)$  pairs corresponding to buffer-layer and large-scale structures and the corresponding peak frequencies  $\omega_{max}$  (the same as in figures 4 and 7); for these values, we compute the SPOD and resolvent modes and the corresponding eigenvalues based on the  $\nu$  and the  $\nu_t$  models, respectively including appropriate integration weights in the discretised operators (see e.g. Zare *et al.* 2017; Schmidt *et al.* 2018; Towne *et al.* 2018).

In what concerns the eigenvalues, a common trend is observed for the SPOD and the resolvent modes, as shown in figure 8: the two leading modes capture 70–90% of the total power, depending on the model; six modes are enough to capture more than 95% of the power of large-scale structures while they capture  $\approx 85\%$  of the power of near-wall structures (these values are similar to those found for linearly estimated space-only PODs by Farrell & Ioannou 1993b; Hwang & Cossu 2010a,b).

Finally, we expand the measured streamwise velocity r.m.s. profile  $\tilde{u}_{rms}^{(dns)}(y) = [S_{uu}^{(dns)}(y, y)]^{1/2}$  for the considered  $\alpha, \beta, \omega_{max}$  on the leading six SPOD and resolvent

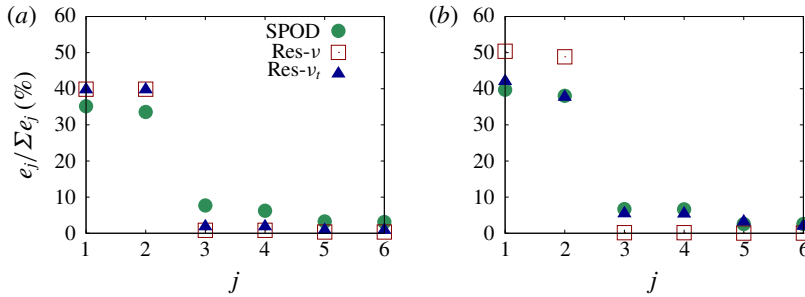


FIGURE 8. (Colour online) Streamwise velocity power content of the six leading SPOD and resolvent modes normalised by the total power for (a) near-wall structures with  $\lambda_x^+ = 450$ ,  $\lambda_z^+ = 100$  at the peak frequency  $\omega = 4.3$  and (b) large-scale structures with  $\lambda_x = 3$ ,  $\lambda_z = 1.5$  at the peak frequency  $\omega = 1.4$ .

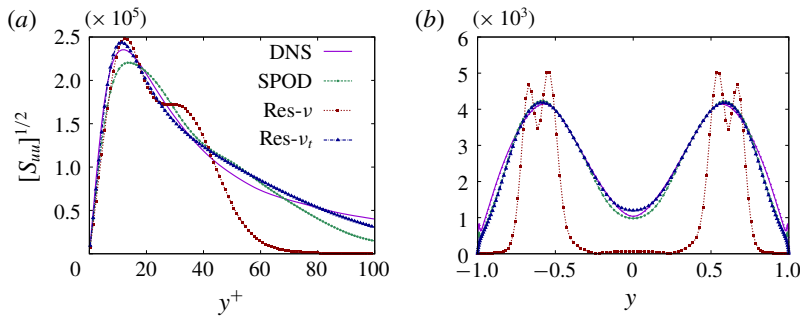


FIGURE 9. (Colour online) Comparison of the streamwise velocity root-mean-square (r.m.s.) profile  $\tilde{u}_{rms}^{(dns)} = [S_{uuu}^{(dns)}]^{1/2}$  computed by direct numerical simulation (DNS) to six-mode expansions based on spectral proper orthogonal decomposition (SPOD) and six-mode expansions on resolvent modes (Res) based on the  $\nu$  and the  $\nu_t$  models respectively for (a) near-wall structures with  $\lambda_x^+ = 450$ ,  $\lambda_z^+ = 100$  at the peak frequency  $\omega = 4.3$  and (b) large-scale structures with  $\lambda_x = 3$ ,  $\lambda_z = 1.5$  at the peak frequency  $\omega = 1.4$ .

modes getting the  $\tilde{u}_{rms}^{(SPOD)}(y) = \sum_{j=1}^6 a_j^{(SPOD)} \psi_j^{(SPOD)}(y)$ ,  $\tilde{u}_{rms}^{(res)}(y) = \sum_{j=1}^6 a_j^{(res)} \psi_j^{(res)}(y)$  estimates.

These estimates are compared to the original profile in figure 9; from this figure we see that the SPOD expansion and the resolvent mode expansion based on the  $\nu_t$  model provide a reasonable approximation of  $\tilde{u}_{rms}^{(dns)}$  for buffer-layer structures (figure 9a) and a quite good approximation for large-scale structures (figure 9b) while this is clearly not the case for the expansion based on the  $\nu$  model resolvent modes, especially for large-scale structures.

### 5. Summary and conclusions

In this study we have compared the ‘measured’ spatio-temporal power cross-spectral density  $\mathbf{S}^{(dns)}$  obtained by direct numerical simulation of plane channel flow at  $Re_\tau = 1007$  to the estimated one  $\mathbf{S}^{(res)} = \mathbf{p} \mathbf{H} \mathbf{H}^*$  based on the resolvent operator (linear transfer function)  $\mathbf{H}$  under the customary assumption that the forcing spatio-temporal power cross-spectral density is of the type  $\mathbf{P} = \mathbf{p} \mathbf{I}$ . The main advantage of this type of

analysis is that the contributions of different temporal frequencies to the spatial energy spectral density can be analysed separately, as emphasised in the recent studies of Semeraro *et al.* (2016), Schmidt *et al.* (2018) and Towne *et al.* (2018) who analyse the relation between proper orthogonal decomposition and resolvent analysis.

Two cases have been considered for the forcing power spectrum  $p(\omega)$ : a flat (white-noise) forcing power spectrum  $p = \bar{p}$  and that of a ('coloured'-noise) forcing power spectrum where  $p(\omega)$  is chosen so as to match the power spectrum of the estimated streamwise velocity power spectral density to the measured one. Two separate linear models have been used to evaluate the resolvent: the first, labelled ' $\nu_t$  model', includes the effect of the turbulent Reynolds stresses modelled with an eddy viscosity while the second, labelled ' $\nu$  model', does not include them.

The two linear models and the two types of forcing power spectrum, have been tested for structures with spatial scales typical of buffer-layer structures ( $\lambda_z^+ = 100$ ,  $\lambda_x^+ = 450$ ) and of large-scale motions ( $\lambda_z = 1.5$ ,  $\lambda_x = 3$ ). We find that estimations based the  $\nu_t$  model resolvent lead to qualitatively correct estimations of power cross-spectral density distributions and of the dependence of the power spectral density wall-normal distributions on the frequency (or, equivalently, the phase speed). On the contrary, estimations based on the  $\nu$  model lead to generally overestimated values of the streamwise velocity power spectral density which are (too) narrowly concentrated near the critical layer. The  $\nu$  model is also unable to even qualitatively reproduce the  $c_{max}^+ - y_{max}^+$  values of the peak amplitude of the power spectral density for buffer-layer structures. We also show that in all cases, as expected, the estimation is improved by using the appropriately coloured input power spectrum  $p(\omega)$  instead of white noise as already observed by Zare *et al.* (2017) using a different methodology.

Similar results are found when comparing highly truncated expansions of the measured streamwise velocity power spectral density on the basis of the leading spectral POD (SPOD) modes to the expansions on leading resolvent modes. The six-modes expansion based on SPOD modes approximates well the original power spectral density and a comparable accuracy is obtained by making use of the same number of resolvent modes based on the  $\nu_t$  model, while the use of resolvent modes based on the  $\nu$  model leads to a less accurate approximations, especially for large-scale structures.

These results can be understood by recalling that in estimates based on the  $\nu_t$  model the effect of turbulent Reynolds stresses is included in the resolvent  $\mathbf{H}$  while in the  $\nu$  model the effect of turbulent Reynolds stresses resides only in the forcing and the associated power cross-spectral density  $\mathbf{P}$ . As a consequence, when using linear models in the estimation  $\mathbf{S}^{(est)} = \mathbf{H}\mathbf{P}\mathbf{H}^*$ , when no accurate information on  $\mathbf{P}$  is available (which is often the case, especially at high Reynolds numbers, and one therefore assumes the standard  $\mathbf{P} = p\mathbf{I}$ ), the  $\nu_t$  model performs relatively well because the effect of the turbulent Reynolds stresses is embedded in  $\mathbf{H}$ . It is likely that the  $\nu$  model could perform equally well in the case where relevant information on turbulent Reynolds stresses is available leading to a realistic modelling of the forcing cross-spectral tensor  $\mathbf{P}$ ; in this second case the scale selection would be dictated by  $\mathbf{P}$  instead of  $\mathbf{H}$ .

These findings are consistent with those of Illingworth *et al.* (2018) who find that the use of the  $\nu_t$  model leads to a better performance in the estimation of streamwise velocity fluctuations in the turbulent channel at the same friction Reynolds number  $Re_\tau = 1007$  considered here (however, they assume a white-noise spectrum and do not separate the different frequency contributions in their analysis). It is also important to note that there is no contradiction between our findings and those of

Semeraro *et al.* (2016), Schmidt *et al.* (2018) and Towne *et al.* (2018) who show a reasonable agreement of resolvent modes computed with the  $\nu$  model to experimental power cross-spectral density data in turbulent jets because, contrary to turbulent wall-bounded flows, in the case of jets the turbulent eddy viscosity has only a weak dependence on the (cross-stream) radial coordinate and therefore the  $\nu$  and  $\nu_t$  formulations almost coincide except for a Reynolds number rescaling by  $\nu/\nu_T$ .

In the present investigation turbulent Reynolds stresses have been modelled with eddy viscosity, as in a number of previous studies, but an improvement of quantitative predictions of the power cross-spectral density tensor could probably come from a more advanced modelling of the Reynolds stress tensor in the linear operator. Also, as the linear operators that we have discussed do mainly model the non-normal streaks amplification mechanism, important progress could come from an improved, necessarily nonlinear, modelling of the coherent forcing terms which are related to the regeneration mechanism of the vortices in the self-sustained processes discussed by Waleffe (1995), Hwang & Cossu (2010c, 2011) and Cossu & Hwang (2017) among others. These issues are under current intensive scrutiny.

### Acknowledgements

Direct numerical simulations were performed on resources provided by the Swedish National Infrastructure for Computing (SNIC) at NSC, HPC2N and PDC.

### Appendix A. Linear model operators

The linear system of (2.3) is derived (see e.g. Schmid & Henningson 2001) from (2.1) with the operators **A** and **B** defined as

$$\mathbf{A} = \begin{bmatrix} \Delta^{-1} \mathcal{L}_{OS} & 0 \\ -i\beta U' & \mathcal{L}_{SQ} \end{bmatrix}, \quad \mathbf{B} = \begin{bmatrix} -i\alpha \Delta^{-1} \mathcal{D} & -k^2 \Delta^{-1} & -i\beta \Delta^{-1} \mathcal{D} \\ i\beta & 0 & -i\alpha \end{bmatrix}, \quad (\text{A } 1a,b)$$

where the generalised Orr–Sommerfeld and Squire operators (Cossu *et al.* 2009; Pujals *et al.* 2009) are:

$$\mathcal{L}_{OS} = -i\alpha(U\Delta - U'') + \nu_T \Delta^2 + 2\nu_T' \Delta \mathcal{D} + \nu_T'' (\mathcal{D}^2 + k^2), \quad (\text{A } 2)$$

$$\mathcal{L}_{SQ} = -i\alpha U + \nu_T \Delta + \nu_T' \mathcal{D}, \quad (\text{A } 3)$$

with  $\mathcal{D}$  and  $'$  denoting  $d/dy$ ,  $k^2 = \alpha^2 + \beta^2$  and  $\Delta = \mathcal{D}^2 - k^2$ . Homogeneous boundary conditions are enforced on both walls:  $\hat{v}(\pm 1) = \mathcal{D}\hat{v}(\pm 1) = \hat{\omega}_y(\pm 1) = 0$ . The linear operators relating  $\hat{\mathbf{u}}$  and  $\hat{\mathbf{q}}$  are

$$\mathbf{C} = \frac{1}{k^2} \begin{bmatrix} i\alpha \mathcal{D} & -i\beta \\ k^2 & 0 \\ i\beta \mathcal{D} & i\alpha \end{bmatrix}; \quad \mathbf{D} = \begin{bmatrix} 0 & 1 & 0 \\ i\beta & 0 & -i\alpha \end{bmatrix}. \quad (\text{A } 4a,b)$$

### Appendix B. Direct numerical simulations and data analysis

The simulations have been performed using the SIMSON code, which is pseudo-spectral and uses Fourier expansions in the streamwise and spanwise directions, where periodicity is enforced, and Chebyshev expansions in the wall-normal direction to

solve the three-dimensional time-dependent incompressible Navier–Stokes equations in the channel (see Chevalier *et al.* 2007, for further details).

A total of  $N_x = 128$ ,  $N_y = 129$ ,  $N_z = 128$  points (before 3/2-rule dealiasing of Fourier modes) have been used for the  $Re_\tau = 1007$  simulations in the domain  $L_x = 3$ ,  $L_y = 2$ ,  $L_z = 1.5$ , with a uniformly spaced grid in  $x$  and  $z$  and Gauss–Lobatto points in  $y$ . At  $Re_\tau = 1007$  this corresponds to a grid spacing  $\Delta x^+ = 23$ ,  $\Delta z^+ = 12$  and to  $\Delta y_{min}^+ = 0.3$  near the wall and  $\Delta y_{max}^+ = 24$  at the channel centre. This chosen grid is coarser than those typically used in DNS at this Reynolds number (e.g. Lee & Moser 2015, who use  $\Delta x^+ = 11$ ,  $\Delta z^+ = 5$ ) to keep the data analysis manageable but it has been verified that this has no significant impact on the first- and second-order flow statistics (see figure 1).

The initial transient of the simulation is discarded and statistics and samples are accumulated starting from  $t = 95\,000$ . Welch’s method with Hamming windowing and 75% overlap has been used to compute the velocity power cross-spectral density  $\mathbf{S}$  using a total of  $N_s = 8001$  snapshots of the DNS solutions with sampling interval  $(\Delta t)_s = 0.25$  for a total acquisition time  $T_{max} = 2000$  for the small scales, and using  $N_s = 20\,001$  snapshots sampled every  $(\Delta t)_s = 0.5$  for a total acquisition time  $T_{max} = 10\,000$  for the large scales. The average temporal step of the DNS during the acquisition time is  $\overline{\Delta t} = 0.0106$ , i.e.  $\overline{\Delta t}^+ = 0.35$ . Data have also been averaged between the two walls.

#### REFERENCES

- DEL ÁLAMO, J. C. & JIMÉNEZ, J. 2006 Linear energy amplification in turbulent channels. *J. Fluid Mech.* **559**, 205–213.
- DEL ÁLAMO, J. C., JIMÉNEZ, J., ZANDONADE, P. & MOSER, R. D. 2004 Scaling of the energy spectra of turbulent channels. *J. Fluid Mech.* **500**, 135–144.
- BENDAT, J. S. & PIERSOL, A. G. 1986 *Random Data: Analysis and Measurement Procedures*. Wiley.
- BÖBERG, L. & BROSA, U. 1988 Onset of turbulence in a pipe. *Z. Naturforsch. A* **43a**, 697–726.
- BOTTARO, A., SOUIED, H. & GALLETTI, B. 2006 Formation of secondary vortices in a turbulent square-duct flow. *AIAA J.* **44**, 803–811.
- BUTLER, K. M. & FARRELL, B. F. 1992 Three-dimensional optimal perturbations in viscous shear flow. *Phys. Fluids A* **4**, 1637–1650.
- BUTLER, K. M. & FARRELL, B. F. 1993 Optimal perturbations and streak spacing in wall-bounded turbulent shear flow. *Phys. Fluids* **5**, 774–777.
- CESS, R. D. 1958 A survey of the literature on heat transfer in turbulent tube flow. *Res. Rep.* 8–0529–R24. Westinghouse.
- CHEVALIER, M., SCHLATTER, P., LUNDBLADH, A. & HENNINGSON, D. S. 2007 A pseudo-spectral solver for incompressible boundary layer flows. *Tech. Rep.* TRITA-MEK 2007:07. Royal Institute of Technology (KTH), Dept. of Mechanics, Stockholm.
- CORRSIN, S. & KISTLER, A. L. 1954 The free-stream boundaries of turbulent flows. *Tech. Note* **3133**, 120–130, NACA.
- COSSU, C. & HWANG, Y. 2017 Self-sustaining processes at all scales in wall-bounded turbulent shear flows. *Phil. Trans. R. Soc. Lond. A* **375** (2089), 20160088.
- COSSU, C., PUJALS, G. & DEPARDON, S. 2009 Optimal transient growth and very large scale structures in turbulent boundary layers. *J. Fluid Mech.* **619**, 79–94.
- ELLINGSEN, T. & PALM, E. 1975 Stability of linear flow. *Phys. Fluids* **18**, 487–488.
- FARRELL, B. F. & IOANNOU, P. J. 1993a Optimal excitation of three-dimensional perturbations in viscous constant shear flow. *Phys. Fluids* **5**, 1390–1400.
- FARRELL, B. F. & IOANNOU, P. J. 1993b Stochastic forcing of the linearized Navier–Stokes equation. *Phys. Fluids A* **5**, 2600–2609.

- GUSTAVSSON, L. H. 1991 Energy growth of three-dimensional disturbances in plane Poiseuille flow. *J. Fluid Mech.* **224**, 241–260.
- HAMILTON, J. M., KIM, J. & WALEFFE, F. 1995 Regeneration mechanisms of near-wall turbulence structures. *J. Fluid Mech.* **287**, 317–348.
- HUTCHINS, N. & MARUSIC, I. 2007 Evidence of very long meandering features in the logarithmic region of turbulent boundary layers. *J. Fluid Mech.* **579**, 1–28.
- HWANG, Y. & COSSU, C. 2010a Amplification of coherent streaks in the turbulent Couette flow: an input-output analysis at low Reynolds number. *J. Fluid Mech.* **643**, 333–348.
- HWANG, Y. & COSSU, C. 2010b Linear non-normal energy amplification of harmonic and stochastic forcing in turbulent channel flow. *J. Fluid Mech.* **664**, 51–73.
- HWANG, Y. & COSSU, C. 2010c Self-sustained process at large scales in turbulent channel flow. *Phys. Rev. Lett.* **105** (4), 044505.
- HWANG, Y. & COSSU, C. 2011 Self-sustained processes in the logarithmic layer of turbulent channel flows. *Phys. Fluids* **23**, 061702.
- ILLINGWORTH, S. J., MONTY, J. P. & MARUSIC, I. 2018 Estimating large-scale structures in wall turbulence using linear models. *J. Fluid Mech.* **842**, 146–162.
- KIM, K. C. & ADRIAN, R. 1999 Very large-scale motion in the outer layer. *Phys. Fluids* **11** (2), 417–422.
- KLINE, S. J., REYNOLDS, W. C., SCHRAUB, F. A. & RUNSTADLER, P. W. 1967 The structure of turbulent boundary layers. *J. Fluid Mech.* **30**, 741–773.
- KOMMINAHO, J., LUNDBLADH, A. & JOHANSSON, A. V. 1996 Very large structures in plane turbulent Couette flow. *J. Fluid Mech.* **320**, 259–285.
- KOVASZNYAI, L. S. G., KIBENS, V. & BLACKWELDER, R. F. 1970 Large-scale motion in the intermittent region of a turbulent boundary layer. *J. Fluid Mech.* **41**, 283–325.
- LANDAHL, M. T. 1980 A note on an algebraic instability of inviscid parallel shear flows. *J. Fluid Mech.* **98**, 243–251.
- LEE, M. & MOSER, R. D. 2015 Direct numerical simulation of turbulent channel flow up to  $Re_\tau \approx 5200$ . *J. Fluid Mech.* **774**, 395–415.
- LUMLEY, J. L. 1970 *Stochastic Tools in Turbulence*. Academic Press.
- MALKUS, W. V. R. 1956 Outline of a theory of turbulent shear flow. *J. Fluid Mech.* **1**, 521–539.
- MCKEON, B. J. 2017 The engine behind (wall) turbulence: Perspectives on scale interactions. *J. Fluid Mech.* **817**, P1.
- MCKEON, B. J. & SHARMA, A. S. 2010 A critical-layer framework for turbulent pipe flow. *J. Fluid Mech.* **658**, 336–382.
- MOFFATT, H. K. 1967 The interaction of turbulence with strong wind shear. In *Proceedings of the URSI-IUGG Colloquium on Atmospheric Turbulence and Radio Wave Propagation* (ed. A. M. Yaglom & V. I. Tatarsky), pp. 139–154. Nauka.
- PICARD, C. & DELVILLE, J. 2000 Pressure velocity coupling in a subsonic round jet. *Intl J. Heat Fluid Flow* **21** (3), 359–364.
- PUJALS, G., GARCÍA-VILLALBA, M., COSSU, C. & DEPARDON, S. 2009 A note on optimal transient growth in turbulent channel flows. *Phys. Fluids* **21**, 015109.
- REDDY, S. C. & HENNINGSON, D. S. 1993 Energy growth in viscous channel flows. *J. Fluid Mech.* **252**, 209–238.
- REDDY, S. C., SCHMID, P. J., BAGGETT, J. S. & HENNINGSON, D. S. 1998 On the stability of streamwise streaks and transition thresholds in plane channel flows. *J. Fluid Mech.* **365**, 269–303.
- REYNOLDS, W. C. & HUSSAIN, A. K. M. F. 1972 The mechanics of an organized wave in turbulent shear flow. Part 3. Theoretical models and comparisons with experiments. *J. Fluid Mech.* **54** (02), 263–288.
- REYNOLDS, W. C. & TIEDERMAN, W. G. 1967 Stability of turbulent channel flow, with application to Malkus's theory. *J. Fluid Mech.* **27** (02), 253–272.
- SCHMID, P. J. & HENNINGSON, D. S. 2001 *Stability and Transition in Shear Flows*. Springer.
- SCHMIDT, O. T., TOWNE, A., RIGAS, G., COLONIUS, T. & BRÈS, G. A. 2018 Spectral analysis of jet turbulence. *J. Fluid Mech.* **855**, 953–982.

- SCHOPPA, W. & HUSSAIN, F. 2002 Coherent structure generation in near-wall turbulence. *J. Fluid Mech.* **453**, 57–108.
- SEMERARO, O., JAUNET, V., JORDAN, P., CAVALIERI, A. V. & LESSHAFFT, L. 2016 Stochastic and harmonic optimal forcing in subsonic jets. In *22nd AIAA/CEAS Aeroacoustics Conference*, p. 2935. AIAA.
- TOWNE, A., SCHMIDT, O. T. & COLONIUS, T. 2018 Spectral proper orthogonal decomposition and its relationship to dynamic mode decomposition and resolvent analysis. *J. Fluid Mech.* **847**, 821–867.
- TREFETHEN, L. N., TREFETHEN, A. E., REDDY, S. C. & DRISCOLL, T. A. 1993 A new direction in hydrodynamic stability: beyond eigenvalues. *Science* **261**, 578–584.
- WALEFFE, F. 1995 Hydrodynamic stability and turbulence: beyond transients to a self-sustaining process. *Stud. Appl. Maths* **95**, 319–343.
- ZARE, A., JOVANOVIĆ, M. R. & GEORGIU, T. T. 2017 Colour of turbulence. *J. Fluid Mech.* **812**, 636–680.