

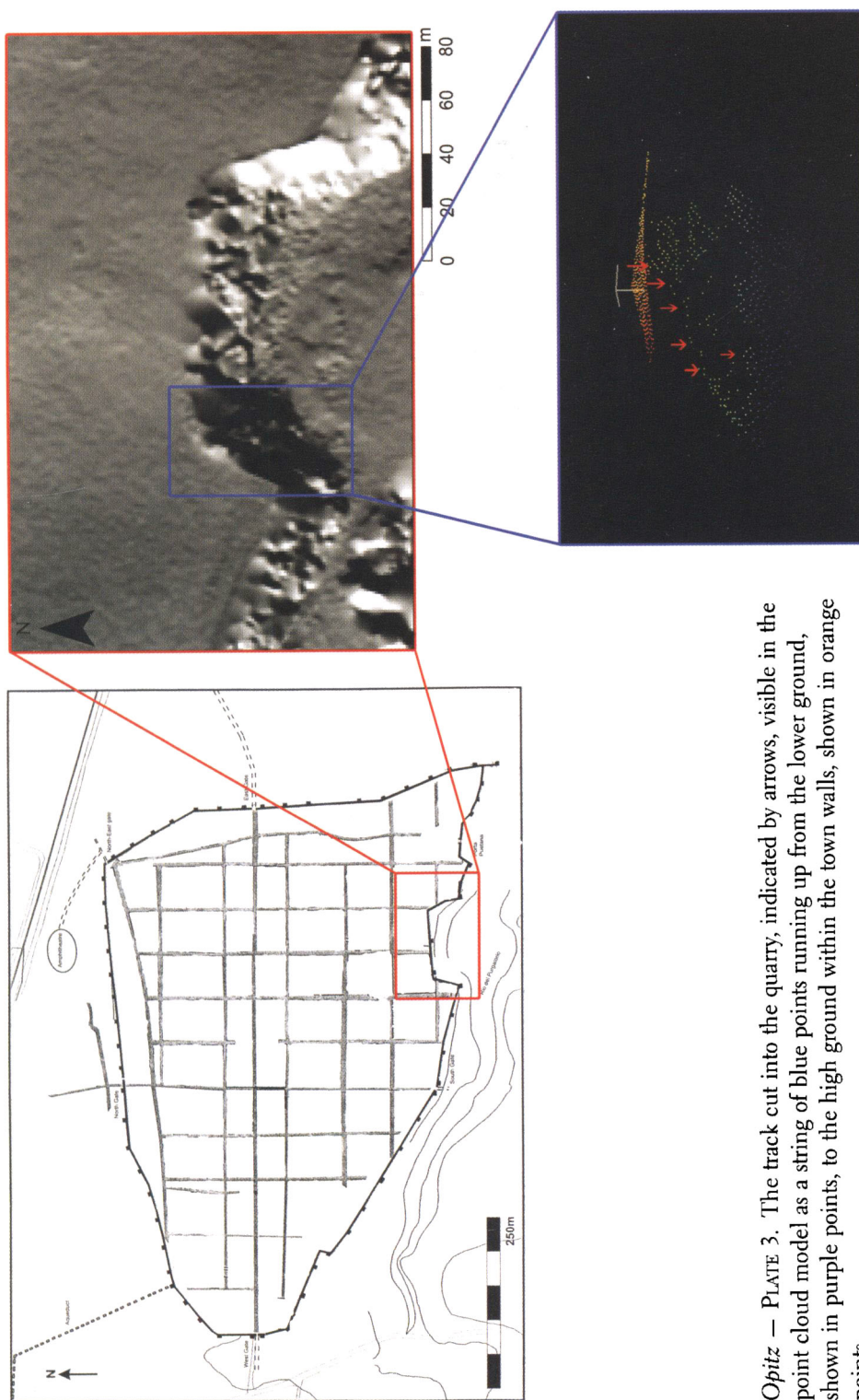


Opitz — PLATE 1. The temples at *Falerii Novi*, marked in red, on the geophysical plan. All but one, interpreted as a possible Capitolium, are along the peripheral road inside the town walls. (Geophysical plan after Key et al., 2000: fig. 7.)

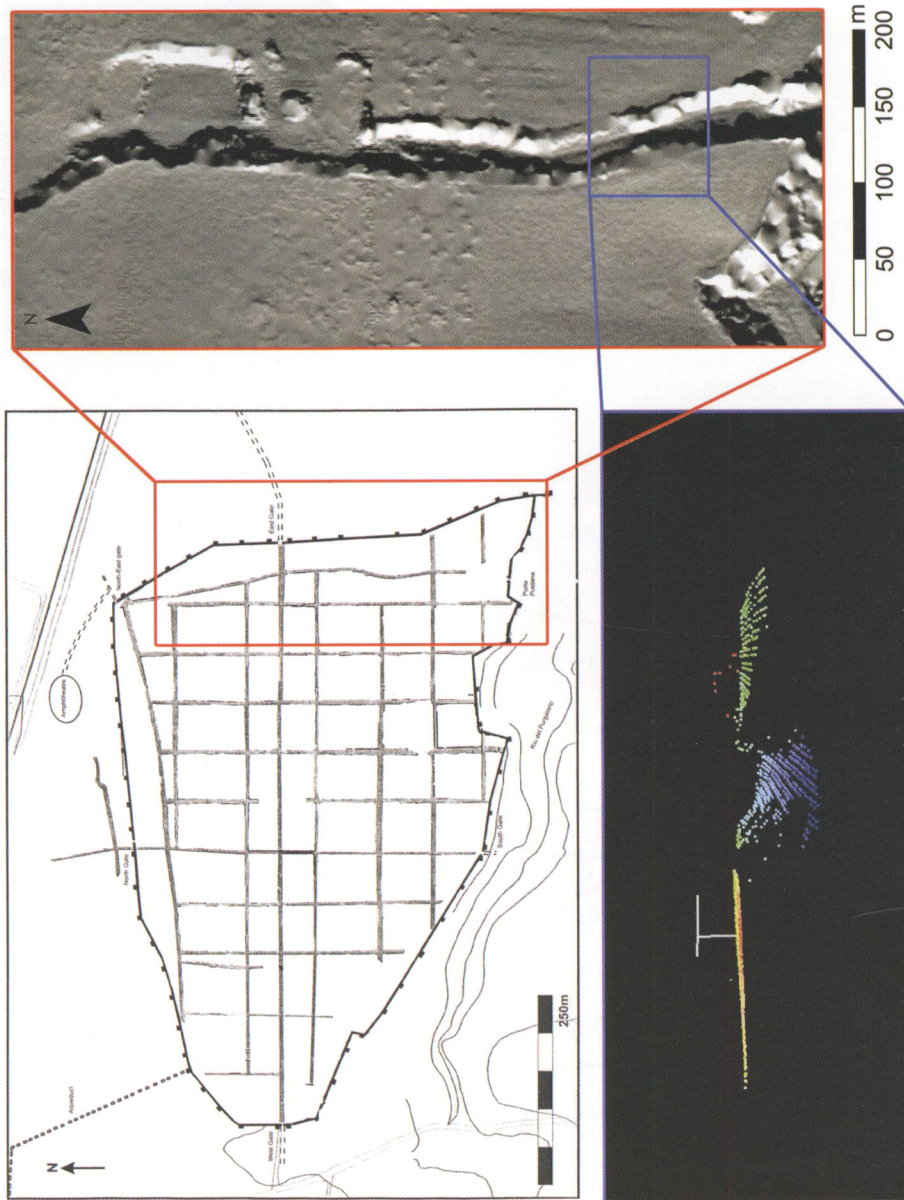


Opitz — PLATE 2. Assessment of the standing walls, showing the towers visible in 2005 and 2006 (in red), upon the geographical plan of Keay and his colleagues (2000: fig. 7). (After McCall, 2007: fig. 1.82.)

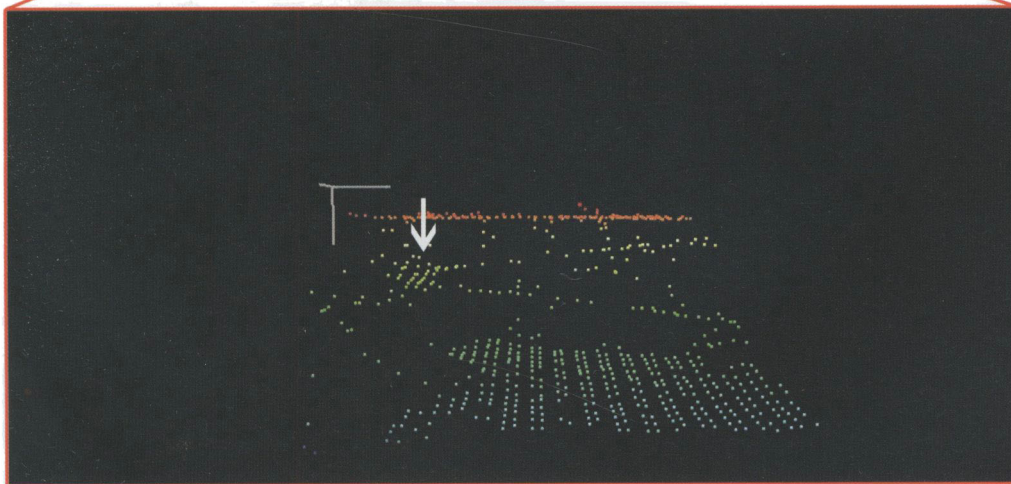




*Opitz* — PLATE 3. The track cut into the quarry, indicated by arrows, visible in the point cloud model as a string of blue points running up from the lower ground, shown in purple points, to the high ground within the town walls, shown in orange points.

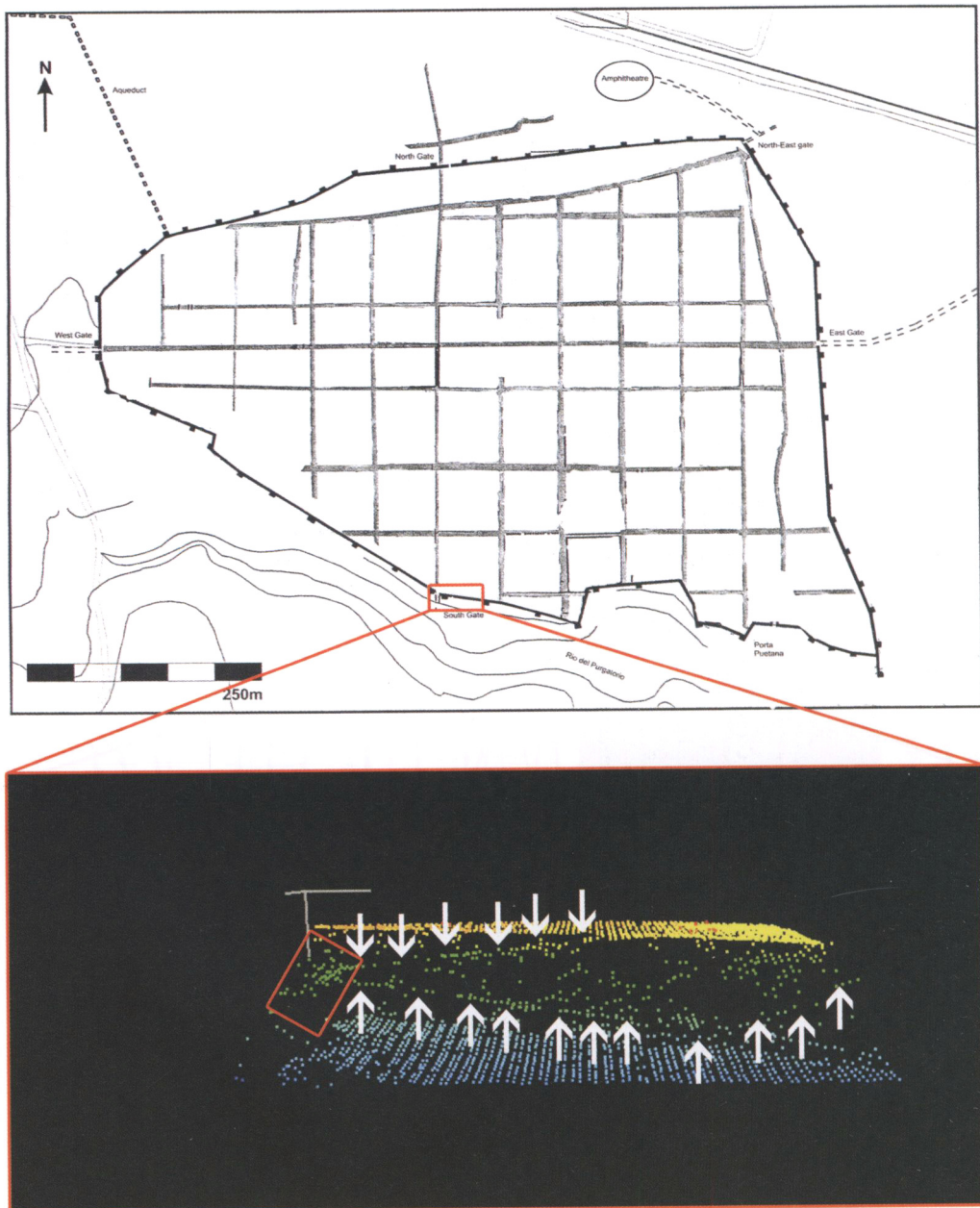


Opitz — PLATE 4. The quarry on the east side of *Falerii Novi* visible in the top half of the hill-shaded image. The narrow rock-cut path is seen in both the hill-shaded image and the point cloud model. The green and yellow points represent the natural level of the ground while the blue points are returns from the bottom of the rock-cut path.



*Opitz* — PLATE 5. The ramp carrying the Via Amerina up to the town, indicated by the arrow (green returns).



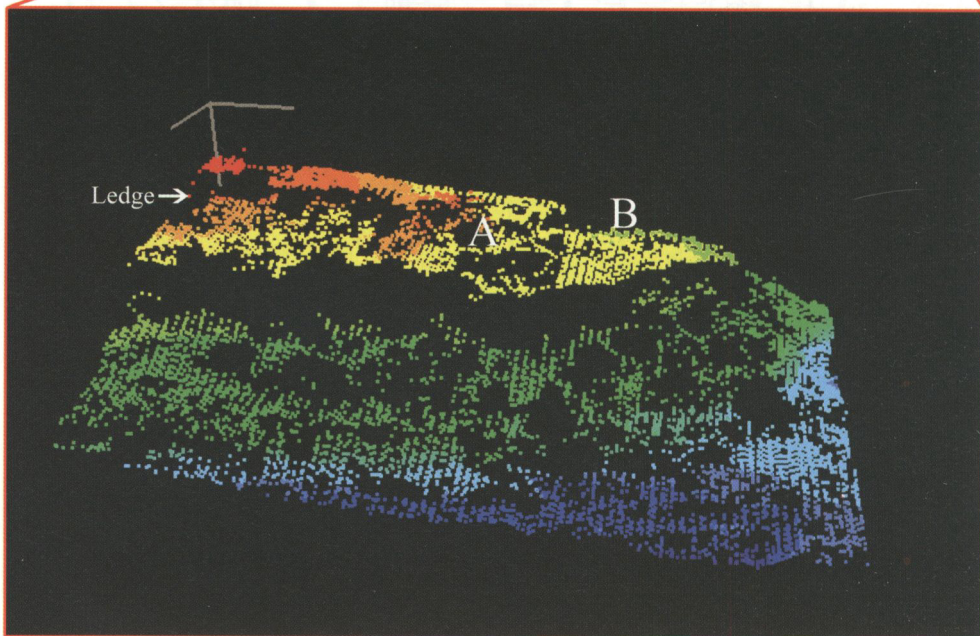


*Opitz* — PLATE 6. The plateau divided into three levels by the paths splitting off from the Via Amerina. The Via Amerina is marked by a red box and the paths are indicated by arrows.



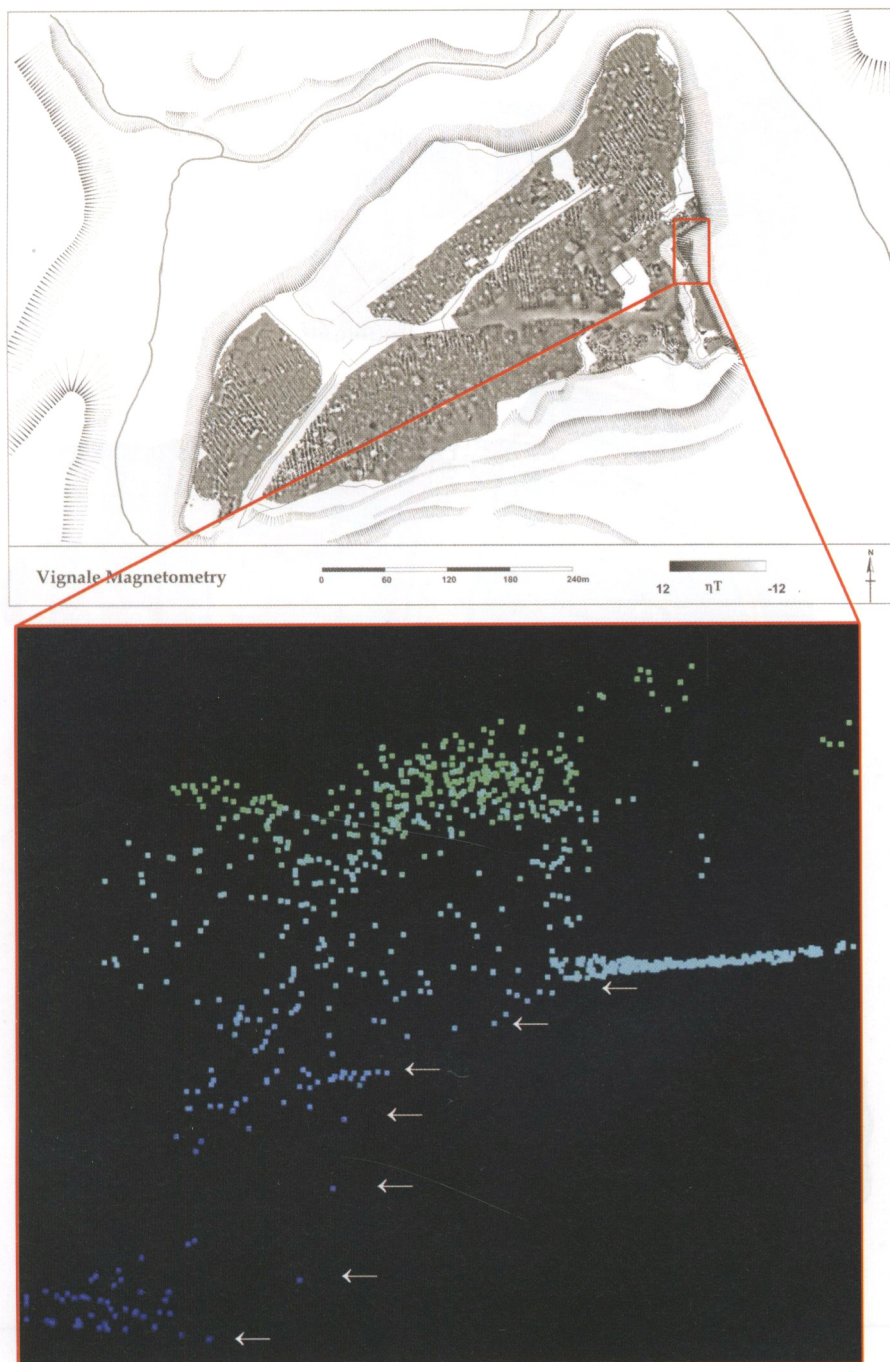
Opitz — PLATE 7. The road running along the perimeter of *Falerii Novi* inside the town walls would have continued outside the town walls and along the south face past a number of tombs, entering the town again at the Porta Putana. (After Millett, 2007: fig. 2D.)



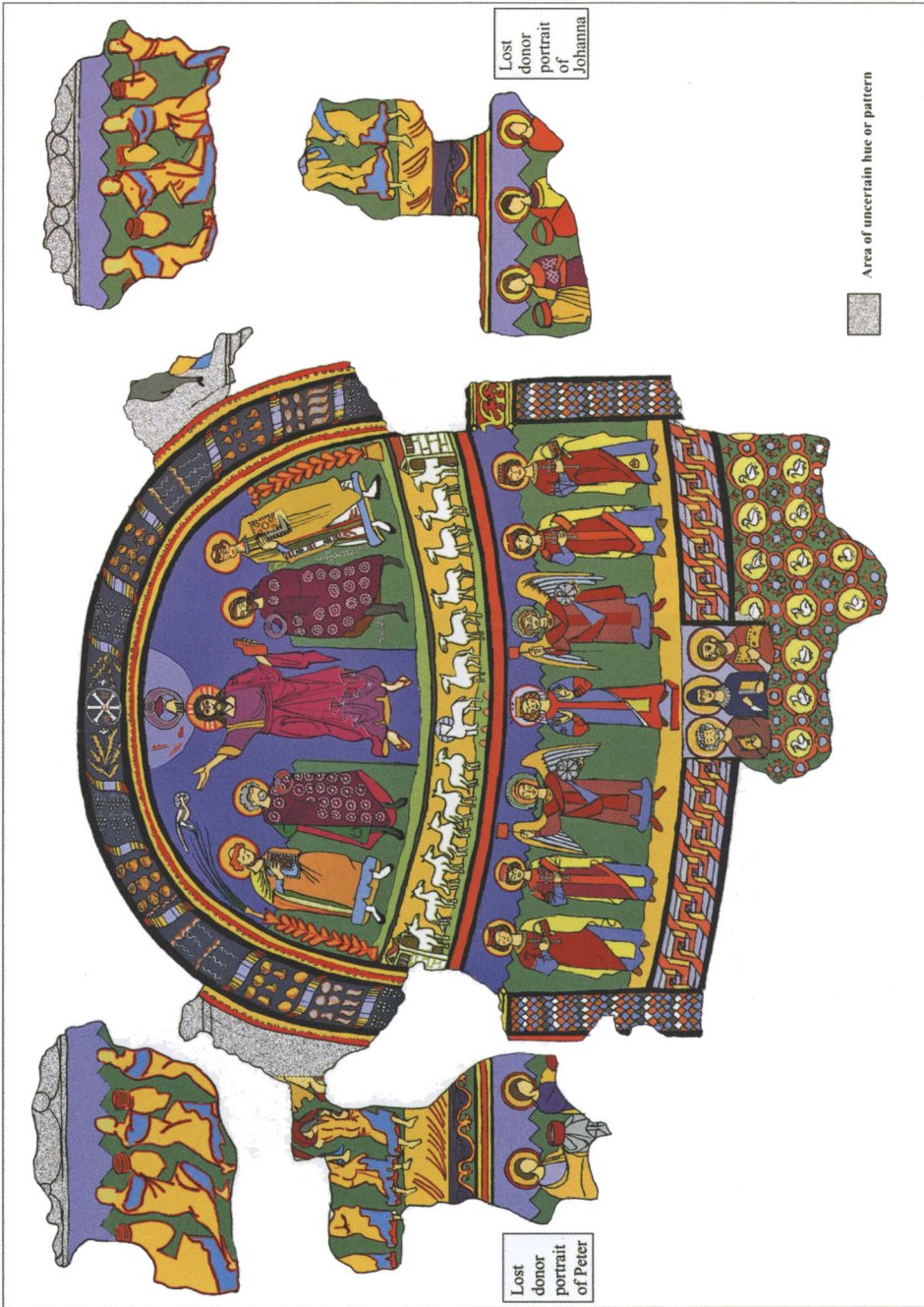


*Opitz* — PLATE 8. Artificial terraces (A and B) shown as the light green and yellow points at the top of the lidar model and as a gap in the magnetometry. These terraces sit above several ledges on the south face of the Vignale. These ledges do not join up in any way that creates a complete path from the top of the plateau to the valley at its base.





*Opitz* — PLATE 9. A single row of points, indicated by arrows, on the east side of the Vignale plateau perhaps representing an alternative path to the ledges seen on the south side of the plateau.



Marchiori — PLATE 1. Schematic diagram of the apse and apse arch paintings of Santa Maria in Pallara. (Drawing: author.)