

Access
leading
journals in
your subject

Cambridge Core

Explore today at [cambridge.org/core](https://www.cambridge.org/core)

Cambridge Core



CAMBRIDGE
UNIVERSITY PRESS

CONTENTS

Breeding and genetics

- Kohl, S., Wellmann, R. and Herold, P.
Advanced optimum contribution selection as a tool to improve regional cattle breeds: a feasibility study for Vorderwald cattle 1
- Sartori, C., Guzzo, N. and Mantovani, R.
Genetic correlations of fighting ability with somatic cells and longevity in cattle 13

Nutrition

- García-Mazcorro, J. F., Ishaq, S. L., Rodríguez-Herrera, M. V., García-Hernández, C. A., Kawas, J. R. and Nagaraja, T. G.
Review: Are there indigenous *Saccharomyces* in the digestive tract of livestock animal species? Implications for health, nutrition and productivity traits 22
- Matte, J. J. and Audet, I.
Maternal perinatal transfer of vitamins and trace elements to piglets 31
- Koo, B., Bustamante-García, D., Kim, J. W. and Nyachoti, C. M.
Health-promoting effects of *Lactobacillus*-fermented barley in weaned pigs challenged with *Escherichia coli* K88 + 39
- Martinez, C. H. G., Ravagnani, G. M., Muro, B. B. D., Mendonça, M. V., Passarelli, M. S., Nakasone, D. H., Carnevale, R. F., Strefezzi, R. F., Martins, S. M. M. K. and Andrade, A. F. C.
Dietary ractopamine supplementation of pregnant sows: what are the impacts on the neonate? 50

- Dykier, K. C., Oltjen, J. W., Robinson, P. H. and Sainz, R. D.
Effects of finishing diet sorting and digestibility on performance and feed efficiency in beef steers 59
- Rabaza, A., Banchoero, G., Cajarville, C., Zunino, P., Britos, A., Repetto, J. L. and Fraga, M.
Effects of feed withdrawal duration on animal behaviour, rumen microbiota and blood chemistry in feedlot cattle: implications for rumen acidosis 66

Physiology and Functional Biology

- Casal, A., García-Roche, M., Navajas, E. A., Cassina, A. and Carriquiry, M.
Differential hepatic oxidative status in steers with divergent residual feed intake phenotype 78
- Santos, R. K. S., Novais, A. K., Borges, D. S., Alves, J. B., Dario, J. G. N., Frederico, G., Pierozan, C. R., Batista, J. P., Pereira Jr, M. and Silva, C. A.
Increased vitamin supplement to sows, piglets and finishers and the effect in productivity 86

Welfare, Behaviour and Health Management

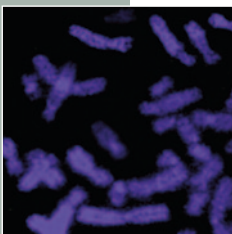
- Girard, M. and Bee, G.
Invited review: Tannins as a potential alternative to antibiotics to prevent coliform diarrhea in weaned pigs 95
- Maisano, A. M., Luini, M., Vitale, N., Rota Nodari, S., Scali, F., Alborali, G. L. and Vezzoli, F.
Animal-based measures on fattening heavy pigs at the slaughterhouse and the association with animal welfare at the farm level: a preliminary study 108
- Riber, A. B., Rangstrup-Christensen, L., Hansen, M. S., Hinrichsen, L. K. and Herskin, M. S.
Characterisation of footpad lesions in organic and conventional broilers 119
- Martin, J. E., McKeegan, D. E. F., Magee, D. L., Armour, N. and Pritchard, D. G.
Pathological consequences of low atmospheric pressure stunning in broiler chickens 129
- Taylor, P. S., Hemsforth, P. H., Groves, P. J., Gebhardt-Henrich, S. G. and Rault, J.-L.
Frequent range visits further from the shed relate positively to free-range broiler chicken welfare 138
- Tamioso, P. R., Boissy, A., Boivin, X., Chandéze, H., Andanson, S., Delval, É., Taconeli, C. A., Hazard, D. and Molento, C. F. M.
Spatial distance and reactivity traits alter the positive perception of brushing by ewes 150
- Taylor, J. D., Gilliam, J. N., Mourer, G. and Stansberry, C.
Comparison of effects of four weaning methods on health and performance of beef calves 161

Livestock Farming Systems

- Richardson, C. M., Baes, C. F., Amer, P. R., Quinton, C., Martin, P., Osborne, V. R., Pryce, J. E. and Miglior, F.
Determining the economic value of daily dry matter intake and associated methane emissions in dairy cattle 171
- Ibidhi, R. and Ben Salem, H.
Water footprint and economic water productivity assessment of eight dairy cattle farms based on field measurement 180
- Meyer, D., Haeussermann, A., Barth, K., Lingner, S. and Hartung, E.
Evaluation of three methods to assess the degree of milk-out in dairy cows 190
- Röttgen, V., Schön, P. C., Becker, F., Tuchscherer, A., Wrenzycki, C., Düpjan, S. and Puppe, B.
Automatic recording of individual oestrus vocalisation in group-housed dairy cattle: development of a cattle call monitor 198

Quality of Animal Products

- Koné, G. A., Good, M. and Kouba, M.
Performance of guinea fowl fed hevea seed meal or cashew nut meal as a partial substitute for soya bean meal 206
- Silva, J. S., Rodriguez, F. D., Trettel, M., Abal, R. T., Lima, C. G., Yoshikawa, C. Y. C. and Zanetti, M. A.
Performance, carcass characteristics and meat quality of Nellore cattle supplemented with supranutritional doses of sodium selenite or selenium-enriched yeast 215



Cambridge Core

For further information about this journal
please go to the journal web site at:
cambridge.org/animal



MIX
Paper from
responsible sources
FSC® C007785

CAMBRIDGE
UNIVERSITY PRESS