

CAMBRIDGE

Discover Archaeology ...with Cambridge

For FREE samples of our journals visit:

→ **Archaeological Dialogues**

www.journals.cambridge.org/jid_ARD

→ **Cambridge Archaeological Journal**

www.journals.cambridge.org/jid_CAJ

→ **Social Anthropology**

www.journals.cambridge.org/jid_SAN

→ **Ancient Mesoamerica**

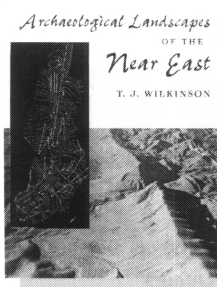
www.journals.cambridge.org/jid_ATM

Unearth the latest research today

www.cambridge.org/archaeology



CAMBRIDGE
UNIVERSITY PRESS



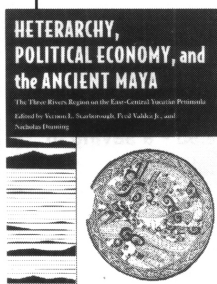
Archaeological Landscapes of the Near East

T. J. WILKINSON

In this trailblazing book, Wilkinson identifies specific landscape signatures for various regions and periods, from the early stages of complex societies to the close of the Early Islamic period. By weaving together the record of the human landscape with evidence of settlement, the environment, and social and economic conditions, he provides a holistic view of the ancient Near East that complements archaeological excavations, cuneiform texts, and other conventional sources.

"It is a fundamental contribution to the field, one that every specialist will need to think about deeply, consult frequently, and of course own." —Robert McC. Adams

\$35.00 paper, \$70.00 cloth. Info at www.uapress.arizona.edu/books/bid1522.htm



Heterarchy, Political Economy, and the Ancient Maya

The Three Rivers Region on the East-Central Yucatán Peninsula

Edited by VERNON L. SCARBOROUGH, FRED VALDEZ Jr., and NICHOLAS DUNNING

Reports on findings and interpretations of the Programme for Belize Archaeological Project that shed new light on how ecology, economy, and political order developed in the ancient past, emphasizing the role of economic interdependency and political cooperation in the development of ancient Maya statecraft.

"A solid contribution to Maya archaeological research for students and professional archaeologists." —Barbara Fash

\$35.00 cloth. Info at www.uapress.arizona.edu/books/bid1521.htm

The University of Arizona Press

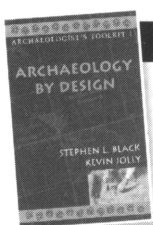
355 S. Euclid Ave., Tucson AZ 85719 • 1-800-426-3797 • www.uapress.arizona.edu

Major new archaeology series!

Archaeologist's Toolkit

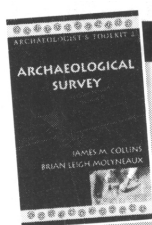
from AltaMira Press

A brand new introductory series of seven titles, covering all aspects archaeology from planning a project to presenting finds. Written by experienced archaeologists and full of practical advice, tips, case studies and illustrations, this series highlights conservation ethics and an understanding of the legal and practical aspects of cultural resource laws. Perfect for new students and novice archaeologists: buy them singly or as a value-for-money boxed set.



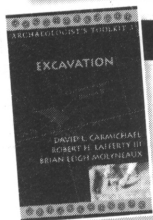
Archaeology By Design

Stephen L. Black and
Kevin Jolly
ISBN: 0759100209
£17.95 paperback



Archaeological Survey

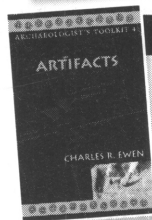
James L. Collins and
Brian Leigh Molyneux
ISBN: 0759100217
£17.95 paperback



Excavation

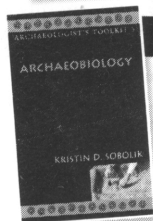
(to be published December 2003)

David L. Carmichael and
Robert Lafferty
ISBN: 0759100195
£17.95 paperback



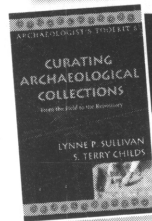
Artifacts

Charles R. Ewen
ISBN: 0759100225
£17.95 paperback



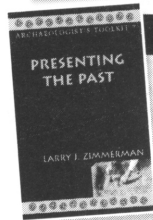
Archaeobiology

Kristin D. Sobolik
ISBN: 0759100233
£17.95 paperback



Curating Archaeological Collections: From the Field to the Repository

Lynne P. Sullivan and
S. Terry Childs
ISBN: 0759100241
£17.95 paperback



Presenting the Past

By Larry J. Zimmerman
ISBN: 0759104034
£17.95 paperback

Series Boxed Set - 7 Volumes

(to be published December 2003)

Extent: 1200 pages ISBN: 0759100179

Price for boxed set: **£94.95** - a saving of
over **£30** on the individual books.

Available through your local bookshop

or order direct from: Plymbridge Distributors Ltd,
Estover Rd, Plymouth, PL6 7PY.

Tel: +44 (0)1752 202301 Fax: +44 (0)1752 202333

E: orders@plymbridge.com



A Member of the Rowman
& Littlefield Publishing Group

RAFTER

RADIOCARBON LABORATORY

Accelerator Mass Spectrometry Radiocarbon Dating

We provide:

- ◆ **Prompt reporting times**
 - ◆ *never more than 8 weeks*
- ◆ **Competitive prices**
 - ◆ *NZ\$ 820 per sample*
- ◆ **Stable isotope corrections**
 - ◆ *$\delta^{13}\text{C}$ measurement at no extra charge*
- ◆ **Additional services**
 - ◆ *3 week express turnarounds*
 - ◆ *enhanced precision measurements*
 - ◆ *radiometric ^{14}C dating for large samples*
 - ◆ *bone C:N analysis:- %C, %N, $\delta^{13}\text{C}$, $\delta^{15}\text{N}$*
 - ◆ *direct dating of pollen*
 - ◆ *X-ray diffraction for shells*
 - ◆ *calibration assistance*
 - ◆ *consultancy services*

For more information, visit our website

www.RafterRadiocarbon.co.nz

or contact us at:

Rafter Radiocarbon Laboratory
Institute of Geological & Nuclear Sciences
30 Gracefield Road, Lower Hutt, New Zealand

☎: +64-4-570 4647
Fax: +64-4-570 4657

Email: rafter.ant@gns.cri.nz



Institute of
**GEOLOGICAL
& NUCLEAR
SCIENCES**
Limited

Andante

TRAVELS

HOLIDAYS WITH EXPERTS IN THE ANCIENT WORLD



FOR OUR FREE BROCHURE PLEASE RING: **01722 713800**

OR EMAIL: tours@andantetravels.co.uk

www.andantetravels.co.uk



Notes for authors and subscribers

Submissions to the journal should report significant new international research, methods or matters of professional and public interest. Text must be original, well-documented and fairminded.

Please write in clear English, so your work can be understood by every member of the broader archaeological and scientific community. Contributors whose first language is not English can send a text in their own language as well, to help the Editor present their work as clearly as possible.

Initial approaches are welcome and should be directed to the editor. Draft contributions of up to 6000 words may be sent either via e-mail or as three paper copies with a 3.5in disc in Word or Word Perfect. Please give the contact address, telephone number and e-mail of the corresponding author.

Illustrations can include line drawings, black and white or colour photographs of professional quality, and should be sent as hard copies or e-pictures via e-mail. Please remember that images for publication need to be scanned with a resolution of at least 300 dpi and line-drawings at least 600 dpi. If photographs are submitted electronically we prefer them to be submitted as .tif, .eps or .jpg files and images to be saved as CMYK images.

All submissions will be sent to at least two anonymous referees. If a paper is accepted, the corresponding author will be sent a digest of the referees' comments and those of the Editor, either incorporated in a letter or a proposed revision of the text. This will form the basis for acceptance. Accepted authors will be requested to return their revised text with any camera-ready art-work, and will be sent a proof for checking before publication.

Authors should receive an immediate acknowledgement that a submission has been received, a decision on acceptance and/or request for revision after peer-review within three months. Papers accepted without revision should appear within six months of submission.

Please send questions, suggestions or copy to:
The Editor of Antiquity, King's Manor, York
YO1 7EP, UK or to:

Email: editor@antiquity.ac.uk
Telephone: +44 (0) 1904 433 994
Fax: +44 (0) 1904 433 902
Website: <http://antiquity.ac.uk>

Submissions to the web may include reports of new projects or work in progress (for the Project Gallery), Notices of conferences or books (Announcements) or Letters to the Editor. Submissions to the Project Gallery may be up to 600 words and up to four colour

photographs. Advertisers for the Announcements section should please contact the webmaster in the first instance. Please send all material by e-mail to editor@antiquity.ac.uk

Books for Review should be sent to the Reviews Editor, Nicholas James, c/o Department of Archaeology, Downing Street, Cambridge CB2 3DZ

Subscriptions

Antiquity is published quarterly, on 1 March, 1 June, 1 September and 1 December.

For 2004 the annual subscription is:

<i>UK & Europe</i>	
Institutional	£72/€125
Personal	£41/€70

<i>USA and rest of world</i>	
Institutional	US\$128*
Personal	US\$73

*with a special developing country institutional rate of £41 and US\$70.

For 2004 the annual special reduced student subscription, valid for two years after completion of course is:

<i>UK & Europe</i>	£27/€50
<i>USA and rest of the world</i>	US\$49

Subscriptions are payable annually in advance to Subscriptions Department, Company of Biologists (see below). They accept payment by cheque, bank draft, money order or credit card.

For subscriptions and subscriber address changes, please contact:

Subscriptions Department, The Company of Biologists,
Bidder Building, 140 Cowley Road, Cambridge
CB4 0DL United Kingdom
Tel: (44) (0) 1223 426164
Fax: (44) (0) 1223 423353
Email: sales@biologists.com

Postmaster: send changes to Antiquity, c/o Mercury Airfreight International Ltd, 2323 Randolph Avenue, Avenel, NJ 07001, USA

Current single issues and back numbers:

<i>UK & Europe</i>	
Institutional	£22/€35
Personal	£12/€20

<i>USA and rest of world</i>	
Institutional	US\$38*
Personal	US\$22

*with a special developing country institutional rate of £12 and US\$22.

Antiquity Subscription Form

Antiquity subscription rates for 2004 are set in four bands. In each band there is a sterling rate for subscribers in Britain and the European Community, a US\$ rate for subscribers elsewhere and a euro rate, plus an optional annual airmail surcharge of \$25.00/£15.00/€22 Institutions (full) and \$23.00/£13.00/€20 for other categories. We happily take payments by credit card, often the cheapest way of paying in a foreign currency.

- Institutional subscribers £72 US\$128 €125
- Special rate for Third World countries £41 US\$73 €70
(We can also supply a limited number of institutions in the Third World with a subscription at no charge: if you want to be one of these please write to us.)
- Personal subscribers £41 US\$73 €70
(Personal rates apply when subscribers are paid by personal cheque or credit card and sent to a private address.)
- Student subscribers: special reduced rate £27 US\$49 €50

To qualify for the student rate you must send in with your subscription proof of your student status, e.g. photocopy of your current student identity card or a letter from your teaching department. (This is valid for two years after you cease your studies.)

Please enter my subscription to *Antiquity* for 2004.

Name:

Category (please circle): Institutional (Full/Third World) – Personal – Student

Airmail surcharge: Yes/No

Address:

.....
.....

Postcode/Zip: Country:

I enclose my remittance (and, if required, proof of student status).

Amount enclosed: \$ / £ / €

or: Please debit my Mastercard/Visa/Access/American Express for the following sum:

\$ / £ / €

Card Number: Expiry Date:

Signature: Delivery address if different from above.

.....

Send completed form to: The Company of Biologists, Bidder Building,
140 Cowley Road, Cambridge CB4 4DL England.

Tel.: (44) (0) 1223 426164; Fax: (44) (0) 1223 423353; Email: sales@biologists.com

Secrets from the Sand

My Search for Egypt's Past

Zahi Hawass

'The life of an Egyptian archaeologist is busy, exciting and sometimes dangerous, and in the following chapters I will tell many stories about my excavations, of the spectacular discoveries we have made, and of my struggles to save the ancient monuments of Egypt.'

With these words, Zahi Hawass introduces his latest book, a personally conducted tour of some of the most important excavation sites in Egypt. His lively descriptions of his life's work, accompanied by many previously unpublished photographs, take us all over Egypt, from Giza, where he supervised the restoration of the Sphinx and the Great Pyramids and explored the newly discovered tombs of the pyramid builders, to the intriguing tombs at Saqqara and Heliopolis and the Golden Mummies in Bahariya Oasis.

Dr Hawass's book is based on rigorous scientific analysis of excavations conducted by himself or under his supervision, although he is also a spellbinding storyteller: in his hands, archaeology becomes the stuff of enthralling adventure, danger and wonder.

262 illustrations, 251 in colour 25.4 x 20.3cm 272pp ISBN 0 500 051259 **£24.95**

The Pagan Dream of the Renaissance

Joscelyn Godwin

'Dazzlingly wide-ranging ... unusual and refreshing ... a fascinating range of beetle-browed and potentially illuminating interpretations – cabbalistic, alchemical, Neoplatonic, zodiacal – for some of the most stunning creations of the Renaissance'

Andrew Graham-Dixon, *The Daily Telegraph*

'This enchanting book is an essential guide to the theory and practice of Renaissance natural magic'

Penelope Gouk, author of *Music, Science and Natural Magic in Seventeenth-Century England*

'A scholarly and well-illustrated feast which does much to explain the explosion of interest in classical antiquity in the Christian courts of the Italian Renaissance'

3rd Stone

'His sheer humanity leaves one gasping with wonderment, with pleasure, with humour'

Anthony Rooley, author of *Performance: Revealing the Orpheus Within*

250 illustrations 24.0 x 19.0cm 296pp ISBN 0 500 251193 **£26.00**



Thames & Hudson

www.thamesandhudson.com