

A comparison of annual layer thickness model estimates with observational measurements using the Berkner Island ice core, Antarctica

A. MASSAM^{1,2}, S.B. SNEED³, G.P. LEE^{1,4}, R.R. TUCKWELL¹, R. MULVANEY¹, P.A. MAYEWSKI³ and P.L. WHITEHOUSE²

¹British Antarctic Survey, NERC, High Cross, Madingley Road, Cambridge CB3 0ET, UK

²Department of Geography, Durham University, South Road, Durham DH1 3LE, UK

³Climate Change Institute, University of Maine, 133 Sawyer Research Building, Orono, ME 04469-5741, USA

⁴School of Environmental Sciences, University of East Anglia, Norwich Research Park, Norwich NR4 7TJ, UK
ashsam73@bas.ac.uk

Abstract: A model to estimate the annual layer thickness of deposited snowfall at a deep ice core site, compacted by vertical strain with respect to depth, is assessed using ultra-high-resolution laboratory analytical techniques. A recently established technique of high-resolution direct chemical analysis of ice using ultra-violet laser ablation inductively-coupled plasma mass spectrometry (LA ICP-MS) has been applied to ice from the Berkner Island ice core, and compared with results from lower resolution techniques conducted on parallel sections of ice. The results from both techniques have been analysed in order to assess the capability of each technique to recover seasonal cycles from deep Antarctic ice. Results do not agree with the annual layer thickness estimates from the age–depth model for individual samples < 1 m long as the model cannot reconstruct the natural variability present in annual accumulation. However, when compared with sections > 4 m long, the deviation between the modelled and observational layer thicknesses is minimized to within two standard deviations. This confirms that the model is capable of successfully estimating mean annual layer thicknesses around analysed sections. Furthermore, our results confirm that the LA ICP-MS technique can reliably recover seasonal chemical profiles beyond standard analytical resolution.

Received 4 July 2016, accepted 4 January 2017, first published online 14 February 2017

Key words: age–depth model, chemistry, glaciology, mass spectrometry, ultra-high-resolution

Introduction

The deposition of snow across Antarctica results in a record spanning millennia, which is capable of recording seasonal cycles of several different climatic proxies, revealing past climatic conditions on local, regional and global scales, on both short- and long-term timescales. Preservation of temporal variations in stable water isotopes and chemistry as the deposited snow turns to ice creates an isotope-chemistry series that can provide seasonal to glacial/interglacial reconstructions of past climate (Dansgaard 1953, 1964).

Unreactive gases trapped within the ice matrix offer continuous records of atmospheric conditions on a global scale due to rapid rates of atmospheric mixing. In order to reconstruct large-scale climatic events on an inter-hemispheric scale, climate proxies from multiple sources must be integrated and tied to a single chronology, which requires a continuous, high-resolution record. Accurate synchronization of ice-core records with climate proxy records from marine, polar and terrestrial sites gives the best view of global climate responses during glacial/interglacial periods, and high-resolution profiles are vital to the full interpretation of the timing and characteristics of underlying

mechanisms, and to understanding the relationship between the Polar Regions and the rest of the Earth.

The dating of deep Antarctic ice cores still relies primarily on modelled accumulation derived from seasonal cycles in the stable water isotopes and chemistry. Therefore, improvements to existing chronologies depend on further developments of the analytical techniques. The low mean annual accumulation characterizing much of Antarctica makes it difficult to obtain sub-annually resolved proxy records in ice cores beyond certain depths. Therefore, the construction of Antarctic ice-core chronologies, and the subsequent interpretation of palaeoclimate records, typically relies on glaciological modelling techniques that are constrained using observational data, e.g. known-age horizons preserved in the ice or chemical records. Increasing the resolution of palaeoclimate records improves the information that can feed into climate or chronological models. The models applied to ice-core profiles rely on the resolution of the stable water isotope profile as well as a number of glaciological assumptions on ice sheet stability and they therefore have larger age-uncertainty compared to annual layer counted ice-core chronologies.

As water isotopes tend to diffuse in ice and the seasonal cycles may be lost, improvements to analytical resolution

have been progressing following two main approaches, continuous and discrete trace-element analysis. A direct, continuous method (continuous flow analysis (CFA)) takes measurements continuously along the length of the ice core. These methods are less labour intensive, although they usually result in the destruction of the ice core by melting. Continuous melting of an ice section coupled with the *in situ* analysis of trace-chemical species by ICP-MS and ultra-violet (UV)/visible spectroscopy improves the resolution of continuous records and achieves a spatial resolution of ~ 10 mm (Sigg *et al.* 1994, Rothlisberger *et al.* 2000). A great advantage of CFA systems is their relatively low contamination levels, ensured by removing the meltwater produced by the outermost part of the ice core. A disadvantage of CFA systems is the dispersion in the melting and liquid transport that limits the sub-annual resolution of deep Antarctic ice cores, and consequently, the degree to which information available on long-term timescales can be accurately synchronized with other climate proxy archives.

Developments to direct trace-element analysis improve the depth resolution by the application of UV laser sampling coupled with an ICP-MS. For some time, laser ablation inductively-coupled plasma mass spectrometry (LA ICP-MS) has been applied to geological samples in order to optimize the resolution and accuracy of trace-element analysis in geochemical contexts (Arrowsmith 1987, Bea *et al.* 1996). More recently, this technique in ultra-high-resolution direct trace-element analysis has been independently developed in ice-core laboratories (Reinhardt *et al.* 2001, Müller *et al.* 2011, Sneed *et al.* 2015). Previous studies have demonstrated that the UV LA ICP-MS apparatus and calibration technique developed at the WM Keck Laser Ice Facility at the Climate Change Institute (CCI, University of Maine, ME, USA) yields profiles that are similar in shape and trend of the ice-core profile to those produced using CFA analysis, but at orders of magnitude higher resolution (Sneed *et al.* 2015). Correlation of LA ICP-MS results with existing chemical records on alpine ice-core chemistry profiles confirms the reproducibility of the results (Sneed *et al.* 2015). Further to this, LA ICP-MS can be used as a basis of comparison for previous studies; a recent study dramatically increased the resolution of the record comprising the end of the Younger Dryas and the onset of the Holocene as preserved in the GISP2 ice core (Mayewski *et al.* 2014). This ultra-high-resolution record offered a novel view of abrupt climate change over this period and suggested a decrease in storm frequency and an increase in the length of the Arctic summer season at this transition (Mayewski *et al.* 2014). Most recently, LA ICP-MS has been applied to West Antarctic ice originating from the last glacial period at Siple Dome-A. Successful analysis of sub-seasonal profiles demonstrated the variability in the annual layer thickness measurements that had not been

identified earlier in glaciological models or ice-core chemistry (Haines *et al.* 2016).

In addition to increased resolution of climate records, major advantages of the LA ICP-MS technique include the rapid analysis time and the fact that the UV laser results in negligible ice loss, allowing repeated analyses to be carried out (Müller *et al.* 2011). In repeating the analysis, individual line scans can be used to measure single- and multi-element arrays, increase the spatial resolution available and provide an alternative approach to acquiring ultra-high-resolution profiles of climatic proxies in ice cores.

An alternative discrete high-resolution technique, developed by R. Mulvaney and E. Wolff (personal communication) at the British Antarctic Survey (BAS), cuts samples at a higher resolution than standard discrete techniques of ~ 10 mm by employing a microtome device to shave the ice sample at a sub-millimetre resolution (Thomas *et al.* 2009). Seasonal cycles in chemistry recovered in glacial ice from the North Greenland Ice Core Project (NGRIP) ice core allowed an absolute measurement of annual layer thickness and insight into the phasing of chemical signals and characteristics of the Dansgaard-Oeschger 8 (DO8) event at *c.* 38 ka BP at 2 mm depth resolution (Thomas *et al.* 2009). A full geochemical profile outlined the dominant and recessive mechanisms for the duration of the climatic transition into DO8 at sub-annual resolution. The method, though effective for high-resolution analysis on deep ice, is labour intensive and it is difficult to cover more than small sections of an ice core. Improvements to the ion chromatography system at BAS (principally a new Dionex 4000 IC system) allow a reduced sample volume and therefore improve the spatial resolution of each measurement.

Despite these advances in direct ice-core analysis, LA ICP-MS is yet to be employed on ice originating from the Weddell Sea, Antarctica, where traditional discrete and CFA methods fail to recover seasonal chemical cycles at great depths. The aim of this study is to compare the different analytical techniques, and then use the results to test the accuracy of the modelling of the annual layer thickness of the Berkner Island ice core. The Berkner Island ice core was drilled over three field seasons 2003–06 (Mulvaney *et al.* 2007), reaching the ice sheet base at a depth of 948 m, at the south dome of the island, which is embedded within the Ronne and Filchner ice shelves in the Weddell Sea. In this study, we reconstruct annual layer thickness from the stable water isotope profiles and glaciological modelling and, following a study to assess the reliability of the records, we assess these model estimates with the observational annual layer thickness measurements obtained by LA ICP-MS.

Methods

High-resolution analysis, completed on parallel sections of ice from three depth ranges along the Berkner Island

ice core, was achieved by indirect and direct trace-element methods. For comparison and confirmation of the record obtained by LA ICP-MS on Antarctic frozen samples, discrete sampling has been completed on parallel sections of ice to obtain a second geochemical profile. Where the annual layer thickness is estimated to be > 20 mm, the discrete samples were not cut using the microtome technique, but instead a band saw was used for which an associated ice loss is calculated. The ion profiles generated by each method have been compared by identifying annual peaks in each profile and calculating the mean annual layer thickness for each section. For assistance in the identification of annual layer peaks, a long section of CFA data is presented for the Berkner Island ice core at a depth where sub-annual resolution is still attainable by this lower resolution technique.

Successively, comparison of annual layer thickness measurements with the annual layer thickness estimated from the model is the final assessment in this work. The methodology for the annual layer thickness model is included in the supplementary material, accompanied by a list of the parameters and known-age horizons used in the estimation of annual layer thickness at Berkner Island.

Continuous flow analysis

A full ice core can be continuously melted in core sections with the dimensions of 30 × 30 mm, with only the inner part of the ice section measured to eliminate the risk of contamination. The remainder of the ice section melted runs off the melt-head as waste. Analysis of the Berkner Island ice core by CFA was completed at BAS, on a system that is capable of measuring a full ion profile among other chemical species, at a continuous rate with a maximum resolution of 10 mm.

Laser ablation inductively-coupled plasma mass spectrometry and discrete sample details

The ice core retrieved from Berkner Island was selected for this study for its low mean annual accumulation at the surface, with an overall thickness of 948 m. Present-day mean annual accumulation at the core site is 0.185 m yr⁻¹ in water equivalent, with an age–depth profile reaching the last interglacial period. As a result, the annual layer thickness model estimates that the depth at which thinned annual layers are beyond the standard laboratory resolution of ~10 mm is ~560 m. This leaves 40% of the total ice-core profile beyond the reach of sub-annual profiles using standard methods.

Parallel sticks of ice, cut from the archived ice core material, have been analysed by two methods including high- and ultra-high-resolution measurements. Sticks of ice were cut from the inner section of the ice core to avoid potential contamination by the drilling fluid residue on

the exterior of the ice core. Sticks of ice were placed in plastic lay-flat bags with the ice core bag number and top of the core section clearly indicated.

Laser ablation inductively-coupled plasma mass spectrometry

The analysis of Berkner Island ice using LA ICP-MS was completed at the WM Keck Laser Ice Facility. The LA ICP-MS method is described in detail in Sneed *et al.* (2015) and only a brief summary of the key features is mentioned here. Profiles were acquired using the Sayre Cell cryocell, developed at the CCI, which is capable of holding up to 1 m of ice at 248 K and has a small volume (~20 cm³) open-design ablation chamber. The cryocell system is positioned underneath a New Wave UP-213 laser, connected to a Thermo Element 2 ICP-MS with Teflon tubing (Sneed *et al.* 2015).

Prior to analysis, the ice sample was cleaned by removing the outer millimetre of ice using a ceramic scraper to limit the contamination risk. The ice is held in the cryocell whilst the gas flow was purged for 2 min in order to remove impurities in the system. Individual line scans, measured using a laser spot size of 100 μm in diameter, yield the ultra-high spatial resolution of LA profiles. The LA ICP-MS profiles are continuous for 40 mm; once finished, the ice is automatically moved to begin the next 40 mm segment, starting at the end of the previous ablation pass. Adjacent line scans, used for multi-element analysis, are separated by 200 μm to prevent overlapping scans. Sampling resolution is 121 μm per sample; this resolution is dependent on the laser spot diameter, firing rate, scan speed and the ICP-MS sampling rate (Sneed *et al.* 2015).

Ice samples, up to 200 mm in length, were analysed for sodium (Na), which has been shown to have a clear annual cycle (Sommer *et al.* 2000). The LA ICP-MS generates results available in counts per second (cps). The relative intensity of element concentrations in cps were converted to concentrations (μg l⁻¹) using calibration curves constructed from liquid samples and lasing frozen standard reference material (Sneed *et al.* 2015).

A dual-cyclonic spray chamber with entrance ports for liquid samples and laser aerosols is fitted to the ICP-MS system. A low-flow nebulizer (20 μl min⁻¹ from Elemental Scientific) aims to reduce the amount of liquid aspirated and to enable higher gas flow in the LA chamber. This facilitates daily calibration of the ICP-MS, which is completed using a combination of liquid standards and frozen reference materials in a two-step process outlined by Sneed *et al.* (2015). To ensure accurate results using the Sayre Cell cryocell, the base of the open cell must have an airtight seal with the ice sample. Soundness of the seal is tested in two ways: i) a flowmeter built into the cryocell system and ii) the ICP-MS is tuned with the ice in place so

Table 1. Annual layer thickness determined as the mean thickness value of all layers identified in each analysed section, and the standard deviation (SD) of each set of annual layers. Modelled annual layer thickness given with model error attached. The estimated age for each sample depth is presented as estimated by the age–depth model.

Depth analysed (m)	LA ICP-MS \pm SD (mm)	Discrete sampling \pm SD (mm)	CFA \pm SD (mm)	Model \pm error (mm)	Estimated age (ka BP)
447–451	N/A	N/A	57.0 \pm 8.8	57.0 \pm 1.9	5.0
454	Variable	57.0 \pm 10.0	N/A	51.2 \pm 1.9	5.5
456	6.7 \pm 0.6	55.0 \pm 1.3	N/A	49.8 \pm 1.9	5.6
458	26.1 \pm 2.3	70.0 \pm 2.8	N/A	49.4 \pm 1.9	5.6
694	2.9 \pm 0.1	N/A	N/A	3.0 \pm 0.2	27.1
695	3.6 \pm 0.1	N/A	N/A	3.1 \pm 0.2	27.4
696	4.0 \pm 0.2	N/A	N/A	3.1 \pm 0.2	27.7
702	3.1 \pm 0.1	2.6 \pm 0.1	N/A	2.8 \pm 0.1	29.7
704	6.1 \pm 0.2	N/A	N/A	2.9 \pm 0.1	30.4
706	5.1 \pm 0.2	6.0 \pm 2.3	N/A	2.8 \pm 0.1	31.1

CFA = continuous flow analysis, LA ICP-MS = laser ablation inductively-coupled plasma mass spectrometry, N/A = depth not analysed.

that a small leak would be observable in the ice chemistry signal (Sneed *et al.* 2015).

Discrete samples

For the deepest sections investigated by LA ICP-MS, discrete samples were obtained from a parallel cut of the same ice core, to be measured in solution mode. This method has been used successfully to analyse the warming transition of DO8 at *c.* 38 kyr in Greenland ice (Thomas *et al.* 2009).

Unlike the ice sampled by the other techniques in this study, sections of ice for the discrete method were limited to 80 mm in length. The reason for this was to limit the bending moment exerted on the stick of ice as it passed under the blade whilst being held in the microtome vice system. The depth ranges of discretely cut samples are included in Table 1.

Prior to cutting the discrete samples, any dust or residue was removed from the instruments by cleaning the microtome blade and mantle using isopropanol. A pre-frozen section of ultra-high-purity (UHP) water was passed under the blade to clean it thoroughly; after

this process, five samples of UHP water were collected for use as a background standard for the cold room procedure during the chemical analysis.

A clean microtome blade removed the outer millimetre of ice in order to avoid contamination from the outer layers. The ice was then placed in the mantle of the microtome and passed under the blade. The mantle automatically raises 40 μ m with every forward stroke so the exact sample size can be determined by the number of times the ice has passed under the blade.

Lower resolution discrete sampling

A lower resolution discrete sampling method was employed on sections of ice for which annual layer thickness is estimated to be >20 mm. For these sections, the high-resolution microtome technique would not be necessary and instead 5 mm discrete samples were cut using a band saw and measured using the same method as samples obtained from the microtome device. An associated ice loss of a millimetre was accounted for in the depth profile, as calculated by the width of the band saw blade.

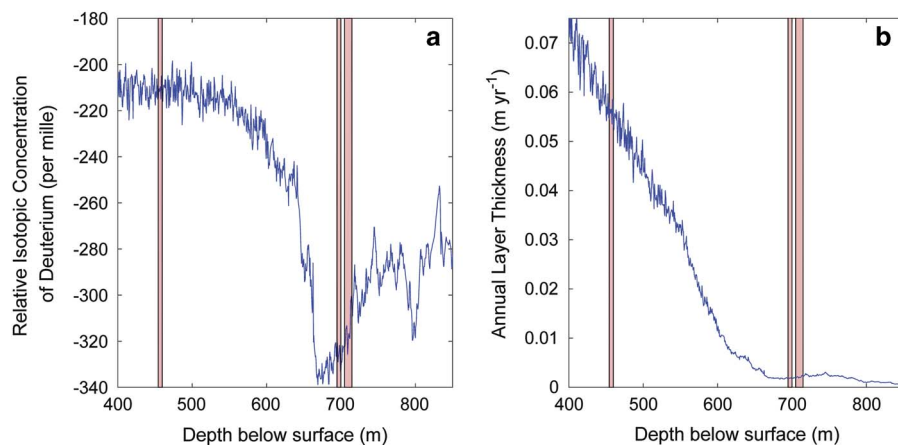


Fig. 1. Berkner Island ice core sampled sections of ice (pink bands) across the **a.** isotopic and **b.** modelled annual layer thickness profiles.

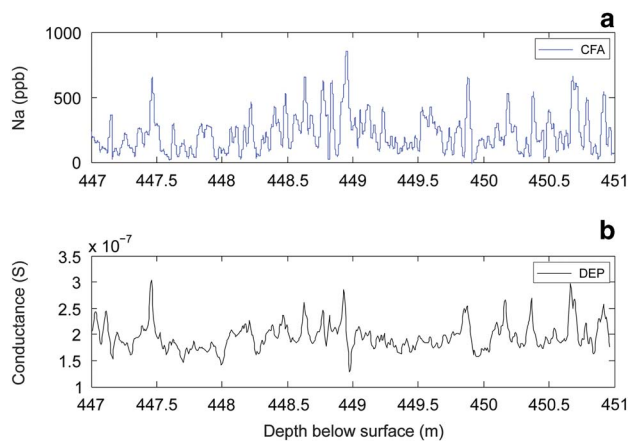


Fig. 2. A 4 m section analysed by **a.** continuous flow analysis (CFA) and **b.** dielectric profiling (DEP).

For all discrete samples, a full ion profile was obtained in sterile conditions by ion chromatography (IC). In order to prevent contamination during the discrete sampling process, protective clothing and powder-free nitrile gloves were worn throughout both the sampling and analysis procedures. The ice sample was only handled with pre-cleaned tongs and the outer millimetre of the ice sample was scraped away using a scalpel or microtome blade to remove any contaminants from the surface of the sample. Ion profiles were measured on a Dionex IC 4000 system in a class-100 clean room, which has < 100 particles of $0.5 \mu\text{m m}^{-3}$.

Results

First, the estimated age and layer thickness of the analysed samples are presented, as derived using the glaciological model. Subsequent sections contain the LA ICP-MS and discrete sampling results, respectively. Annual cycles are identified in the IC and LA ICP-MS records based on the prominence of the Na and Mg peaks from the baseline, and the return of the peak to the baseline between the seasons. Peaks that do not return to the baseline are characterized as discrete events within one annual cycle.

Model estimates

Specific sampled depths were chosen based on the estimated period of original deposition, as interpreted from the isotopic record (Fig. 1), the modelled annual layer thickness (Eq. (S1)–(S3) found at <https://doi.org/10.1017/S0954102017000025>), and ultimately the condition of the archive material at BAS (presented in Table I).

Continuous flow analysis

As a method of comparison, and to aid the analysis of annual layer identification, a 4 m section of the Berkner

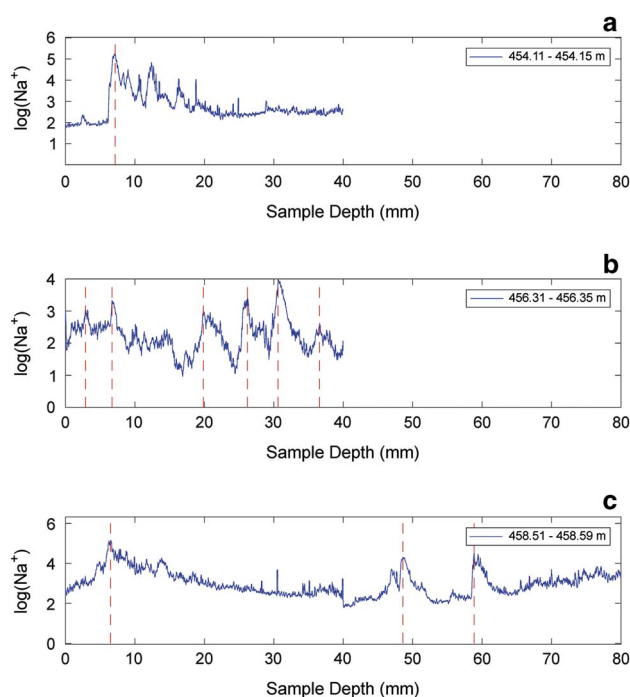


Fig. 3. The LA ICP-MS profiles for three sections of the ice core from 454–459 m. Semi-logarithmic plots show the $\log(\text{Na}^+)$ on a common depth scale with red dashed lines delineating a seasonal peak.

Island ice core at 447 m, analysed by CFA, is presented in Fig. 2 with the correlating dielectric profiling (DEP) data. The section shows a mean annual layer thickness of ~ 57 mm, and highlights the variable annual layer thickness and values of Na.

Laser ablation inductively-coupled plasma mass spectrometry on mid-Holocene ice from 5.5 ka BP (454–459 m)

Figure 3 shows the sections of ice analysed by LA ICP-MS originating from the mid-Holocene period. Three sections were taken from the depth range 454–459 m, where the model predicts the annual layer thickness to be ~ 57 mm (Table I). Results are presented on semi-logarithmic plots. Red dashed lines delineate peaks that could represent either an annual or sub-seasonal deposition in Na. It is not confirmed if these peaks in Na are definitive annual layers or discrete events within an annual cycle, with a mean annual layer thickness much thinner than the estimated values and the annual layer thickness observed in the DEP and CFA Na profiles at 447–451 m.

Laser ablation inductively-coupled plasma mass spectrometry on glacial ice from 27.1–27.7 ka BP (694–697 m)

Over the second depth range of 694–697 m, the mean annual layer thickness is estimated by disregarding sections

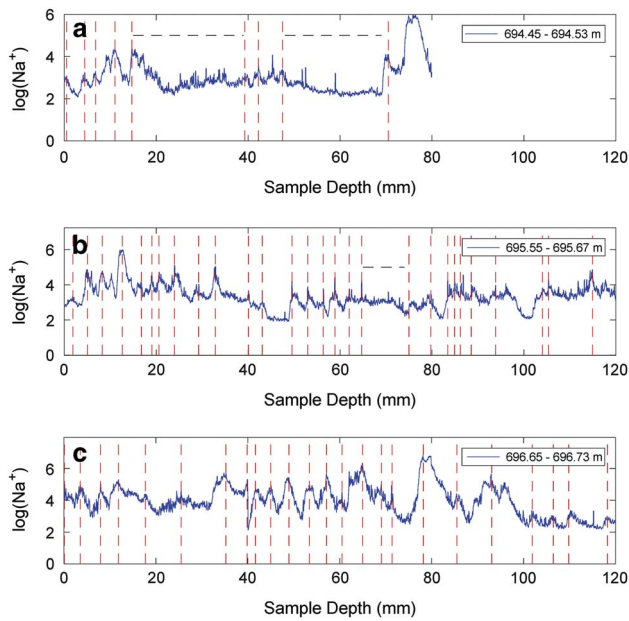


Fig. 4. The LA ICP-MS profiles for three sections of the ice core from 694–697 m. Semi-logarithmic plots show the $\log(\text{Na}^+)$ on a common depth scale with red dashed lines delineating a seasonal peak. Black dashed lines indicate where no annual layers are discernible.

of ice where the chemical signal is not resolvable (~ 19 – 38 mm and ~ 50 – 70 mm). In these sections in Fig. 4, a black dashed line marks where the annual signal is not discernible. An increase in the seasonal periodicity per sampled section of ice, as determined by the seasonal

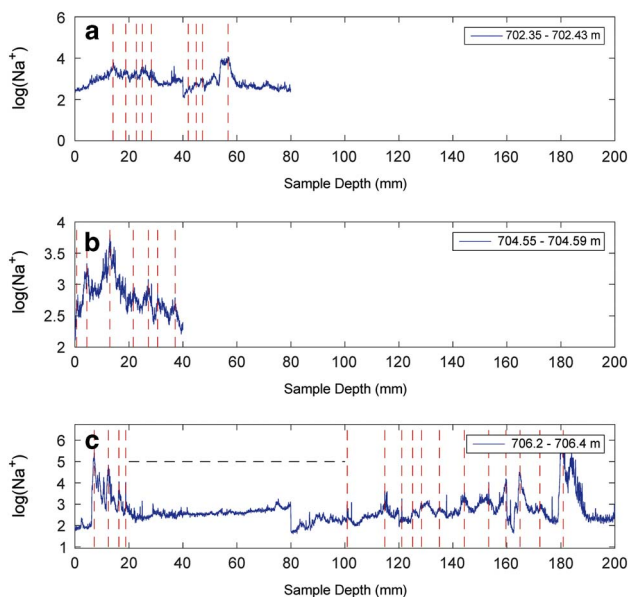


Fig. 5. The LA ICP-MS profiles for three sections of the ice core from 702–707 m. Semi-logarithmic plots show the $\log(\text{Na}^+)$ on a common depth scale with red dashed lines delineating a seasonal peak.

fluctuations in Na, is due to the compaction of annual layers. In Fig. 4c, a drop in concentration at 40 mm is probably due to the recommencement of a line scan.

Laser ablation inductively-coupled plasma mass spectrometry on glacial ice from 29.7–31.2 ka BP (702–707 m)

Similar to the sections of ice analysed from 694–697 m, there is a drop in concentration values at 40 mm in Fig. 5a and 80 mm in Fig. 5c due to the recommencement of line scans. Additionally, as with the observed layer thickness estimations from 694–697 m, observed layer thickness has been estimated only for sections of ice where a seasonal signal is resolvable in the ice. Layer thickness is counted between ~ 10 – 25 mm and ~ 45 – 60 mm in Fig. 5a, yielding an average annual layer thickness of 3.1 mm. Across the ice sections analysed between 702 and 707 m, the chemical signal appears to be a smoothed signal where annual layers are no longer resolvable either in the ice-core record or through the analytical technique. Where identifiable in these profiles, the frequency of the peaks appears to increase from ~ 3 mm in Fig. 5b to 5–6 mm in Fig. 5c.

Initial observations on the geochemical profiles confirm that fluctuations in the Na^+ signal are visible in the Berkner Island ice core record. These layers do not show a clear seasonal pattern in many places, with variations in strength, thickness and signature common throughout the profiles. This is most visible between the Holocene sections at 454–459 m and the late glacial sections at 695–697 m where the number of layers over a common depth range increases by up to a factor of ten.

Focusing on the LA ICP-MS profiles between the depths of 454–459 m, it is not possible to identify a uniform annual layer thickness, despite a relatively stable isotopic record for this depth range (Figs 1a & 3a–c). The layers identifiable in these sections range in thickness between 5 and 30 mm, compared with the 39 mm estimated in the annual layer thickness model.

Within the profiles analysed from a depth 694 m and deeper, sections of ice appear to have little seasonality in the analysed profiles (Figs 4a & 5c). These results raise the following questions regarding the reliability of LA ICP-MS at greater depths. First, is the method capable of obtaining sub-annual cycles in ice originating from the last glacial period, preserved in the Berkner Island ice core? Second, has the chemical signal diffused at these depths, leading to a smoothed record in the ice? The answers to these questions will partly be addressed by determining the repeatability of the ultra-high-resolution results using the alternative, established methods.

In the deepest analysed sections of the ice core the observed mean annual layer thickness doubles between 695 m and 704 m, suggesting a significant increase in annual accumulation at the time of original deposition.

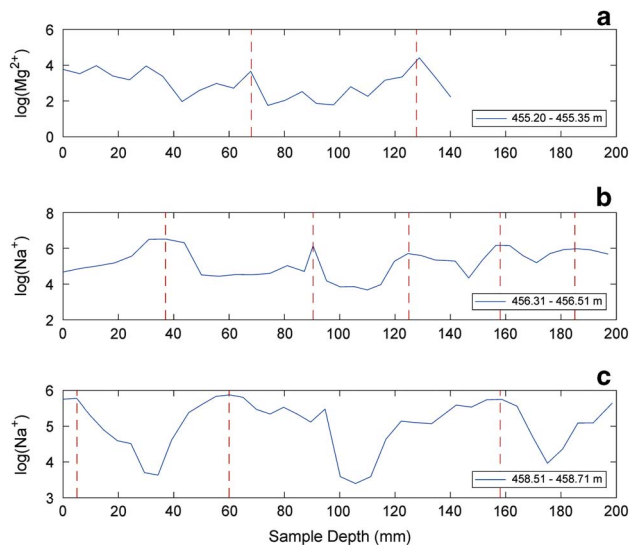


Fig. 6. Three sections of the ice core originating from 455–459 m analysed by ion chromatography and displayed as semi-logarithmic plots of element concentration with red dashed lines indicating annual peaks.

This is contrary to what has been predicted by the model that is unable to identify natural variability not preserved in the stable water isotope profile.

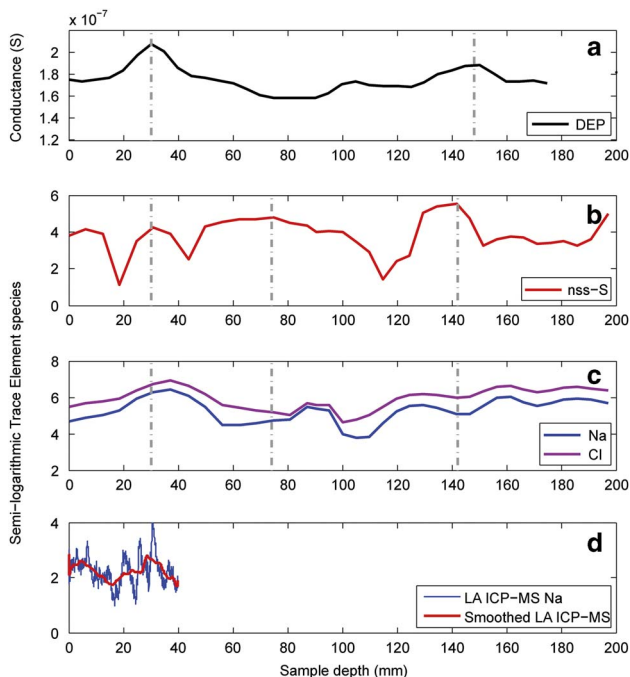


Fig. 7. Comparison of parallel sections of the ice core from 456.31–456.51 m for **a.** dielectric profiling (DEP) data, **b.** nss-S profile analysed by discrete sampling, **c.** sodium and chloride profiles analysed by discrete sampling and **d.** ice analysed by LA ICP-MS with the profile smoothed to the same resolution used in the discrete sampling technique. Annual layers are indicated by grey lines.

The results for discrete sampling have been obtained using both lower and high-resolution methods. The results are presented as semi-logarithmic plots of chemical profiles against the sample length (mm).

Discrete sampling on mid-Holocene ice from 5.5 ka BP (454–459 m)

Discrete samples were cut roughly at a 5 mm spatial resolution on sections of ice parallel to ice analysed by LA ICP-MS. In addition, the dataset has been expanded by sampling an additional 100–150 mm of ice per metre of ice in each depth range. Figure 6 displays the results from this study, and the expanded profiles for sections of ice sampled from 455–459 m, with red dashed lines indicating the point at which a peak is visible. An immediate observation of the three expanded profiles is that seasonality appears smoothed throughout each profile, with a variable annual layer thickness of 50–70 mm that agrees with the CFA profiles and annual layer thickness model. Additional chemistry and the DEP datasets for the

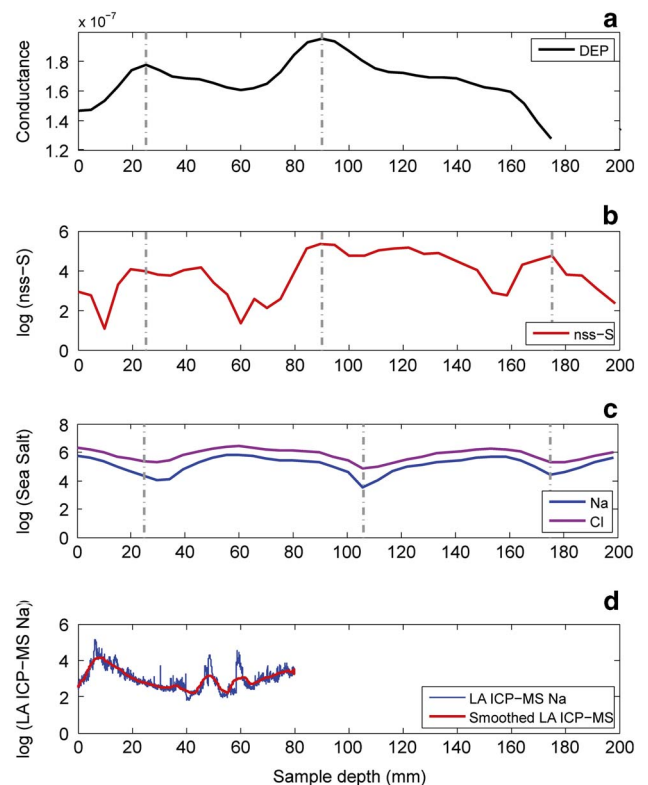


Fig. 8. Comparison of parallel sections of the ice core from 458.51–458.71 m for **a.** dielectric profiling (DEP) data, **b.** nss-S profile analysed by discrete sampling (red), **c.** sodium and chloride profiles analysed by discrete sampling and **d.** ice analysed by LA ICP-MS with the profile smoothed to the same resolution used in the discrete sampling technique (red). Annual layers are indicated by grey lines.

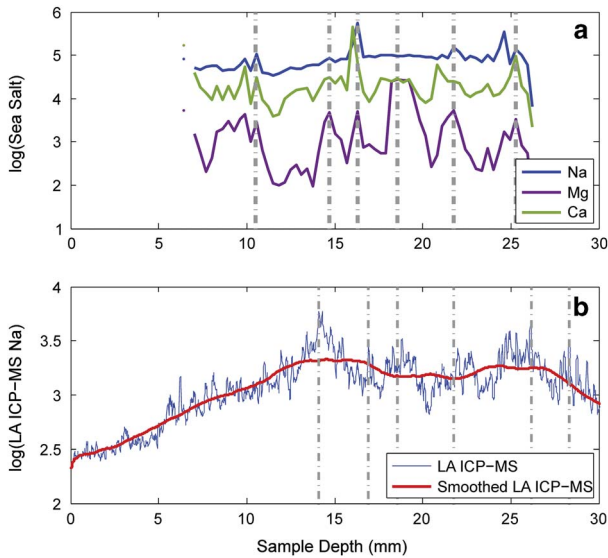


Fig. 9. Comparison of parallel sections of the ice core from 703.2–703.22 m for **a.** ice analysed by discrete sampling technique and **b.** ice analysed via LA ICP-MS with a smoothed profile (red). Black dashed lines indicate where no annual layers are discernible.

corresponding depths have been included for a thorough comparison of the between the LA ICP-MS Na and the lower resolution datasets (Figs 7 & 8). The LA ICP-MS

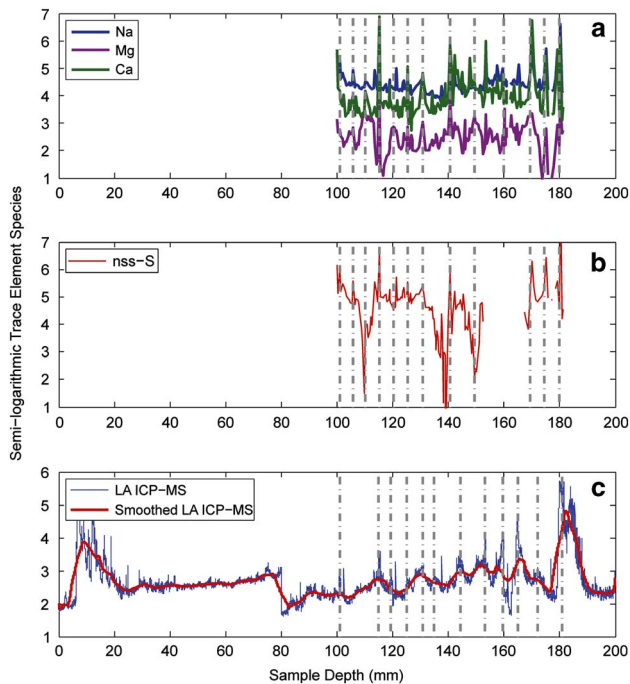


Fig. 10. Comparison of parallel sections of the ice core from 706.3–706.38 m for **a.** ice analysed by discrete sampling technique and **b.** the nss-S profile from the discrete sampling technique and **c.** ice analysed via LA ICP-MS with a smoothed profile (red). Black dashed lines indicate where no annual layers are discernible.

Na signal is presented in two ways: i) the log of the original high-resolution dataset and ii) a logarithmic profile of the smoothed LA ICP-MS Na to the lower resolution used in the discrete sampling. Sub-seasonal discrete events are visible in the Na and chloride profiles but are not identifiable in the non-sea salt sulphur (nss-S) and DEP datasets. Annual layers are delineated with grey bands in each figure, in comparison to the red dashed lines in previous plots where chemical peaks could have been interpreted as an annual signal.

Discrete sampling on glacial ice from 29.7–31.2 ka BP (702–707 m)

A microtome blade was used to discretely cut samples for two sections of ice, originating from the last glacial period, at a spatial resolution of 320–480 μm . The results of these analyses are displayed in Figs 9 & 10, against the LA ICP-MS results. The IC profiles are displayed as semi-logarithmic plots of trace-element sodium (Na^+), magnesium (Mg^{2+}) and calcium (Ca^{2+}) against sampled depth (mm). Only a cation profile is available for ice at 703.2–703.22 m due to low sampling volume, meaning there is only a sulphate signal available at 706.3–706.38 m in this depth range.

Additional annual layers are identified in the lower resolution profile, suggesting that the loss of an annual signal during the LA ICP-MS analysis is due to the capability of the technique and that the seasonal record of the Berkner Island ice core is resolvable and preserved.

Discussion

The methods employed in this study have all used a sample resolution where seasonal variability should be visible in the resulting profile based on the estimated annual layer thicknesses at each analysed depth. As a result, the detection of annual layers is dependent on three factors: i) the preservation of a seasonal cycle in the ice-core record, ii) the reliability of the method to extract the seasonality, and iii) whether the sampling resolution was sufficient. The following section will discuss the feasibility of each analytical approach to obtain a seasonal profile on the ice used as part of this study.

Analysis of ice at depths of 454–459 m using the lower resolution discrete technique was not successful in replicating the trends seen in the high-resolution profile due to the high sampling volume required (Figs 7 & 8). This led us to investigate the small-scale variations resolved in the high-resolution analysis that suggest the LA ICP-MS technique was able to measure sub-annual discrete events within an annual layer. In addition to this sub-seasonal variability, the profile shows the changes in annual accumulation in short timeframes. The Holocene period

shows no consensus of a mean annual accumulation rate that is consistent over the timeframe analysed, suggesting a highly variable annual accumulation. Both of these unresolved questions can be answered by comparison of the high-resolution datasets with longer time series of annual layers from the Berkner Island ice core. Wagenbach *et al.* (1994) presented a high-resolution profile for the upper depths of ice at two domes (north and south) on Berkner Island. The annually resolved profiles demonstrated significant variability in annual layer thickness over a depth range of 11 m; similarly, within this study, CFA and the corresponding DEP profile in the deep Berkner Island record also replicates natural variability (Fig. 2). The results show a mean annual layer thickness that matches the modelled estimate for the total depth range, but the measured profile demonstrates great variability over a couple of metres.

This study has assessed the preservation of annual layers in ice originating from the last glacial period by comparison with lower resolution techniques. Good correlation can be seen between LA ICP-MS profiles and profiles derived using lower resolution techniques on ice from the last glacial period, as well as comparison of each sampling technique with the modelled estimates (Figs 9 & 10, Table I). The trend, magnitude and frequency of Na cycles suggests that annual layers are visible and that these methods can be applied to deep Antarctic ice cores with confidence that the technique is capable of a sub-annual resolution where annual layers are at least as small as 3 mm.

In the deeper section, continuous seasonal profiles are not always visible in the record despite the annual layer thickness estimated to be greater than the resolution of all the techniques employed. This implies a potential loss of signal within the ice-core record, resulting in a smoothed profile with limited seasonal fluctuations. However, this loss of seasonality in the record is not repeated in the lower resolution discretely cut ice core profile at 702–707 m (Figs 9 & 10), suggesting the annual record is still resolvable at this depth. In glacial ice, annual layer thickness appeared to increase dramatically; this increase in annual layer thickness from ~3 mm at 704 m to ~6 mm at 706 m indicates significant natural variability not previously identified through modelling techniques.

Annual layer visibility in the laser ablation inductively-coupled plasma mass spectrometry record

The cycles visible in the LA profiles follow the pattern expected of ice core annual layers. The greatest annual layer thicknesses are visible in the upper depths of the ice core, with the number of seasonal cycles visible increasing with depth due to the compaction of annual layers in the ice core. The patterns that emerge as the analysed depth increases indicate that the ultra-high-resolution method at shallower

depths results in a ‘noisy’ signal. The low sampling volume required makes the LA ICP-MS profiles more sensitive to small-scale variations; as the layer thickness of the cycles decrease with depth, the number of small-scale variations also decreases, suggesting that the main cause for this ‘noise’ in the signal is the analytical resolution.

The seasonal layers visible in the Berkner Island ice, retrieved at a depth in the ice sheet previously unattainable by standard laboratory resolution, confirm that our results are in line with other studies, suggesting that LA ICP-MS is a valuable technique for high-resolution ice core analysis (Müller *et al.* 2011, Mayewski *et al.* 2014, Sneed *et al.* 2015). Since the initial development of LA ICP-MS on frozen samples, the technique has been established through successful application to Greenland and alpine ice. Most notably, LA ICP-MS demonstrated a clear sub-annual view of abrupt climate events including the onset of the Holocene in the GISP2 record as well as the assessment of the capability to identify sea ice and dust markers in the GRIP ice core record (Reinhardt *et al.* 2001, Mayewski *et al.* 2014). In particular, the ultra-high-resolution records that can be produced using LA ICP-MS have the potential to enhance the information available to constrain age–depth models; the profiles presented as part of this study show that the method is capable of inferring climatic variability not recorded in the stable isotopic history of the ice core, such as rapid changes in mean annual accumulation.

In addition to the ultra-high spatial resolution achieved when using LA ICP-MS on frozen samples, the contribution of LA ICP-MS to ice-core analyses is significant. The rapid analysis time, permitted by the balance between the laser spot diameter and high spatial resolution, means that it is possible to measure a 40 mm profile in several minutes. Furthermore, the methodology and implementation of a UV laser is non-destructive to the frozen samples unlike both discretely cut and infrared LA ICP-MS. These features of UV LA ICP-MS add support to the recommendation that this technique should be applied to frozen samples where possible in order to improve the resolution of an ice core profile, and the subsequent chronology and palaeoclimate analysis.

Discrete sampling

The lower resolution sampling technique used to analyse the sections of ice originating from the Holocene does not reproduce results obtained by LA. Seasonal variations detected by the high-resolution LA ICP-MS results are beyond the 5 mm sampling resolution of the lower resolution technique. Similarities in the broad shape profile of the lower resolution profiles suggest a smoothed record that is comparable to the shape and trends in the high-resolution LA ICP-MS record. These results agree with the comparison study on the Colle Gnifetti ice core, which found that lower resolution CFA was unable to detect

seasonal variability but showed a profile resembling a smoothed version of the ones acquired by LA ICP-MS (Sneed *et al.* 2015).

In ice originating from the last glacial period, a higher and variable spatial resolution of 320–480 μm was necessary. The results presented in Figs 9 & 10 correlate well with the corresponding ultra-high-resolution records, and help confirm the potential of LA ICP-MS on Antarctic ice from the last glacial period. Annual layers identified throughout each analysed profile correspond well, though discrepancies are apparent between the discretely sampled and LA profiles, with more annual layers identifiable in the lower resolution profile.

Assessment of the annual layer thickness model

As part of this study, a model was used primarily to estimate the annual layer thickness along the ice core to assist the initial sampling observations (see Supplemental material). The confirmation that seasonal profiles are visible in the glacial ice permits a second comparison study of the observational data with the modelled layer thickness estimates. By comparing these two profiles, the model can be independently validated and give insight into the empirical relationships that contribute to age–depth determinations.

Table I outlines the depths (m, to the nearest integer) that have been sampled and analysed by LA ICP-MS and the discrete sampling techniques, the observed annual layer thickness (if available), and the modelled annual layer thickness estimate and standard deviation (2σ , mm). The results of the ultra-high-resolution analysis, in comparison with the modelled annual layer thickness approximations, demonstrate that the model is successful in estimating the annual layer thickness along the ice core at each depth section except for the depth range of 704–707 m.

The Holocene record produced by LA ICP-MS does not agree with the modelled estimates, suggesting a highly variable accumulation profile that cannot be accurately modelled to account for small-scale variations in accumulation variability over several years. Looking at a broader view, the mean annual layer thickness over the 4 m analysed by CFA is 57.0 ± 8.8 mm, and 51.75 ± 3.51 mm for the discretely measured profiles. Both mean annual layer thickness values are within the confidence interval of the mean modelled estimate of 59.75 ± 6.9 mm.

The small uncertainties attached to the measured and estimated annual layer thicknesses allow corroboration between the high and low sampling resolutions and the model estimates on ice originating from the last glacial period. Estimates agree to within a millimetre, but not the prescribed error margin for ice analysed at a depth of 694–704 m. Similar to the Holocene sections, for the full 10 m section of glacial ice analysed, the mean annual layer

thickness measured by LA ICP-MS is 3.4 ± 0.2 mm, which corroborates with the mean modelled annual layer thickness estimate of 3.0 ± 0.2 mm.

The interannual mean annual layer thickness measurements agree with the modelled estimates for each depth section analysed, suggesting that the model is able to estimate annual layer thickness for sections of the ice core on a metre resolution or greater, but cannot accurately reconstruct natural, local variability in the accumulation profile. This is unsurprising as the resolution of this model is 0.55 m, based on the resolution of the stable water isotope data in the accumulation reconstruction (Eq. (S1)).

At 704 m, the layer thickness observations deviate from the estimated profile due to an increase in annual layer thickness despite continued compaction along the ice core and no evidence in the isotopic record to suggest a deviation from the ice-core physics of strain and layer compaction. The age estimate at 706 m (~ 32 ka BP) coincides with a large increase in stable nitrogen isotopes ($\delta^{15}\text{N}$) identified in the gas-phase of Berkner Island (Mani 2010). From 37 ka BP, a large, positive excursion in $\delta^{15}\text{N}$ begins and does not return to start values for ~ 10 ka. One suggestion for this excursion in $\delta^{15}\text{N}$ records is a rapid and significant increase in the accumulation rate that increased the firn diffusive height and the gravitational fractionation. This accumulation increase would have been rapid in order to leave little-to-no trace in the isotopic record. It is highly probable that the deepest section of ice analysed by LA ICP-MS corresponds to this signature preserved in the gas-phase record and that the observed increase in annual layer thickness within this section strengthens the hypothesis of a rapid increase in annual accumulation. However, the employment of further analysis by ultra-high-resolution techniques could explore the robustness of these results. The increase in annual layer thickness is probably due to a significant increase in mean annual precipitation at the time of original deposition, and warrants further investigation.

Ultra-high-resolution records are paramount to the assessment and improvement of ice-core chronologies. With respect to the annual layer thickness model and the application of high-resolution trace-element analysis, the results of this study suggest that a combination of glaciological modelling and reliable annual layer thickness observations, derived using ultra-high-resolution measurement techniques, would improve the estimation of layer thickness and consequently the age–depth profile of Antarctic ice cores.

Conclusions

The use of LA ICP-MS on ice has the potential to retrieve continuous, seasonal signals from ice-core records at depths currently beyond the range of standard laboratory methods. The application of two techniques in

high-resolution trace-element analysis on frozen ice samples from the Berkner Island ice core agree in measurements of annual layer thickness at three depth ranges, providing a detailed snapshot of the Na and Mg seasonal record of the last glacial period. The results of this analysis have been compared with results from a lower resolution technique applied to parallel sections of ice. The trends, depositional peaks in Na and Mg, and absolute values of calibrated concentration in the IC and LA ICP-MS profiles agree, particularly well in the ice originating from the last glacial period. The low sample volume required for LA ICP-MS yields additional information, and small-scale variability is resolved in the Holocene profiles. Care and extra assessment of LA ICP-MS profiles should be taken to ensure annual layers are not misidentified during the analysis of ice cores.

Assessment of a simple one-dimensional model to estimate the annual layer thicknesses along an ice core confirms that the model is effective at estimating annual layer thicknesses for Holocene and glacial ice on a low-resolution. Modelled annual layer thickness for each individual ice section do not compare well with the observed measurements; the model is unable to reconstruct the natural variability on a local scale without a higher resolution stable water isotope profile and better observational data. Optimal annual layer thickness estimates should be constructed using a combination of the glaciological techniques used in the paper, and estimates for compaction rates that are derived using ultra-high-resolution analytical techniques, such as LA ICP-MS, and discrete sampling.

Acknowledgements

An Antarctic Science bursary, a Natural Environment Research Council doctoral training grant, and the US National Science Foundation funded this research. We would also like to thank the editor and the two reviewers, whose comments much improved this manuscript.

Author contributions

The authors were all involved in the drafting and revisions of the manuscript. Individual input is outlined below:

AM prepared all samples of ice for analysis, assisted with the latest development of discrete sampling technique and contributed to discrete sampling work at BAS, designed and wrote the annual layer thickness model, performed the statistical comparison and wrote the manuscript. GL contributed to the discrete sampling work and analysis by ion chromatography at BAS on Berkner Island. SS conducted the analysis of the ice samples using LA ICP-MS at University of Maine. RT assisted in the ion chromatography analysis of discrete

samples. RM assisted with the design of analysis and model, and editing the manuscript. PAM developed the concept and approach of the LA ICP-MS system at the Climate Change Institute, University of Maine, and facilitated collaboration between BAS and CCI UMaine. PW assisted with the design of analysis and model, and editing the manuscript.

Supplemental material

The model explanation and a list of equations used in the estimation of the annual layer thickness will be found at <https://doi.org/10.1017/S0954102017000025>.

References

- ARROWSMITH, P. 1987. Laser ablation of solids for elemental analysis by inductively coupled plasma mass spectrometry. *Analytical Chemistry*, **59**, 1437–1444.
- BEA, F., MONTERO, P., STROH, A. & BAASNER, J. 1996. Microanalysis of minerals by an Excimer UV-LA-ICP-MS system. *Chemical Geology*, **133**, 145–156.
- DANSGAARD, W. 1953. The abundance of ^{18}O in atmospheric water and water vapour. *Tellus*, **5**, 461–469.
- DANSGAARD, W. 1964. Stable isotopes in precipitation. *Tellus*, **16**, 436–468.
- HAINES, S.A., MAYEWSKI, P.A., KURBATOV, A.V., MAASCH, K.A., SNEED, S.B., SPAULDING, N.E., DIXON, D.A. & BOHLEBER, P.D. 2016. Ultra-high resolution snapshots of three multi-decadal periods in an Antarctic ice core. *Journal of Glaciology*, **62**, 10.1017/jog.2016.5.
- LOULERGUE, L., SCHILT, A., SPAHNI, R., MASSON-DELMOTTE, V., BLUNIER, T., LEMIEUX, B., BARNOLA, J.-M., RAYNAUD, D., STOCKER, T.F. & CHAPPELLAZ, J. 2008. Orbital and millennial-scale features of atmospheric CH_4 over the past 800,000 years. *Nature*, **453**, 383–386.
- MANI, F.S. 2010. *Measurements of $\delta^{15}\text{N}$ of nitrogen gas and composition of trace gases in air from firn and ice cores*. PhD thesis, University of East Anglia, 273 pp. [Unpublished].
- MAYEWSKI, P.A., SNEED, S.B., BIRKEL, S.D., KURBATOV, A.V. & MAASCH, K.A. 2014. Holocene warming marked by abrupt onset of longer summers and reduced storm frequency around Greenland. *Journal of Quaternary Science*, **29**, 99–104.
- MÜLLER, W., SHELLEY, J.M.G. & RASMUSSEN, S.O. 2011. Direct chemical analysis of frozen ice cores by UV-laser ablation ICPMS. *Journal of Analytical Atomic Spectrometry*, **26**, 2391–2395.
- MULVANEY, R., ALEMANY, O. & POSSENTI, P. 2007. The Berkner Island (Antarctica) ice-core drilling project. *Annals of Glaciology*, **47**, 115–124.
- REINHARDT, H., KRIEWS, M., MILLER, H., SCHREMS, O., LÜDKE, C., HOFFMAN, E. & SKOLE, J. 2001. Laser ablation inductively coupled plasma mass spectrometry: a new tool for trace element analysis in ice cores. *Fresenius Journal of Analytical Chemistry*, **370**, 629–636.
- ROTHLISBERGER, R., BIGLER, M., HUTTERLI, M., SOMMER, S., STAUFFER, B., JUNGHANS, H.G. & WAGENBACH, D. 2000. Technique for continuous high-resolution analysis of trace substances in firn and ice cores. *Environmental Science & Technology*, **34**, 338–342.
- SIGG, A., FUHRER, K., ANKLIN, M., STAFFELBACH, T. & ZURMUHLE, D. 1994. A continuous analysis technique for trace species in ice cores. *Environmental Science & Technology*, **28**, 204–209.
- SNEED, S.B., MAYEWSKI, P.A., SAYRE, W.G., HANDLEY, M.J., KURBATOV, A.V., TAYLOR, K.C., BOHLEBER, P., WAGENBACH, D., ERHARDT, T. & SPAULDING, N.E. 2015. New LA-ICP-MS cryocell and calibration technique for sub-millimeter analysis of ice cores. *Journal of Glaciology*, **61**, 233–242.

- SOMMER, S., APPENZELLER, C., RÖTHLISBERGER, R., HUTTERLI, M.A., STAUFFER, B., WAGENBACH, D., OERTER, H., WILHELMS, F., MILLER, H. & MULVANEY, R. 2000. Glacio-chemical study spanning the past 2 kyr on three ice cores from Dronning Maud Land, Antarctica. *Journal of Geophysical Research - Atmospheres*, **105**, 29 411–29 421.
- THOMAS, E.R., WOLFF, E.W., MULVANEY, R., JOHNSEN, S.J., STEFFENSEN, J.P. & ARROWSMITH, C. 2009. Anatomy of a Dansgaard-Oeschger warming transition: high resolution analysis of the North Greenland Ice Core Project ice core. *Journal of Geophysical Research - Atmospheres*, **114**, 10.1029/2008JD011215.
- WAGENBACH, D., GRAF, W., MINIKIN, A., TREFZER, U., KIPPSTUHL, J., OERTER, H. & BLINDOW, N. 1994. Reconnaissance of chemical and isotopic firn properties on top of Berkner Island, Antarctica. *Annals of Glaciology*, **20**, 307–312.