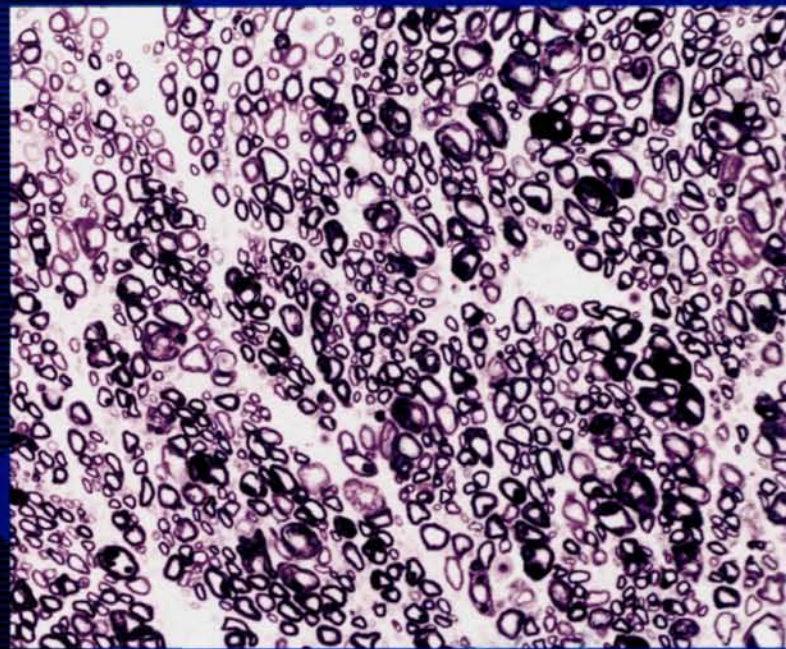


March
1996

The Journal of

Laryngology & Otology

Founded in 1887
by Marcell Mackenzie & Norris Waddell



Edited by Neil Weir

Assistant Editors
Carol Wengraf,
Richard Ramsden,
David Proops,
Valerie Lund,
Henry Grant,
Andrew Jones,
Guy Kenyon,
Michael Rothera,
Martin Bailey,
Liam Flood,
Patrick Bradley &
Nick Jones

Emeritus Advisor
in Pathology
Imrich Friedmann

Advisors in Pathology
Brian Manners,
Christopher Milroy &
Lesley Smallman

Advisor in Audiology
Linda Luxon

Advisors in Radiology
Glyn Lloyd &
Peter Phelps

Advisors in Statistics
Anthony Hughes &
Peter Kelly

Production Editors
Gillian Goldfarb &
Jennifer Almond

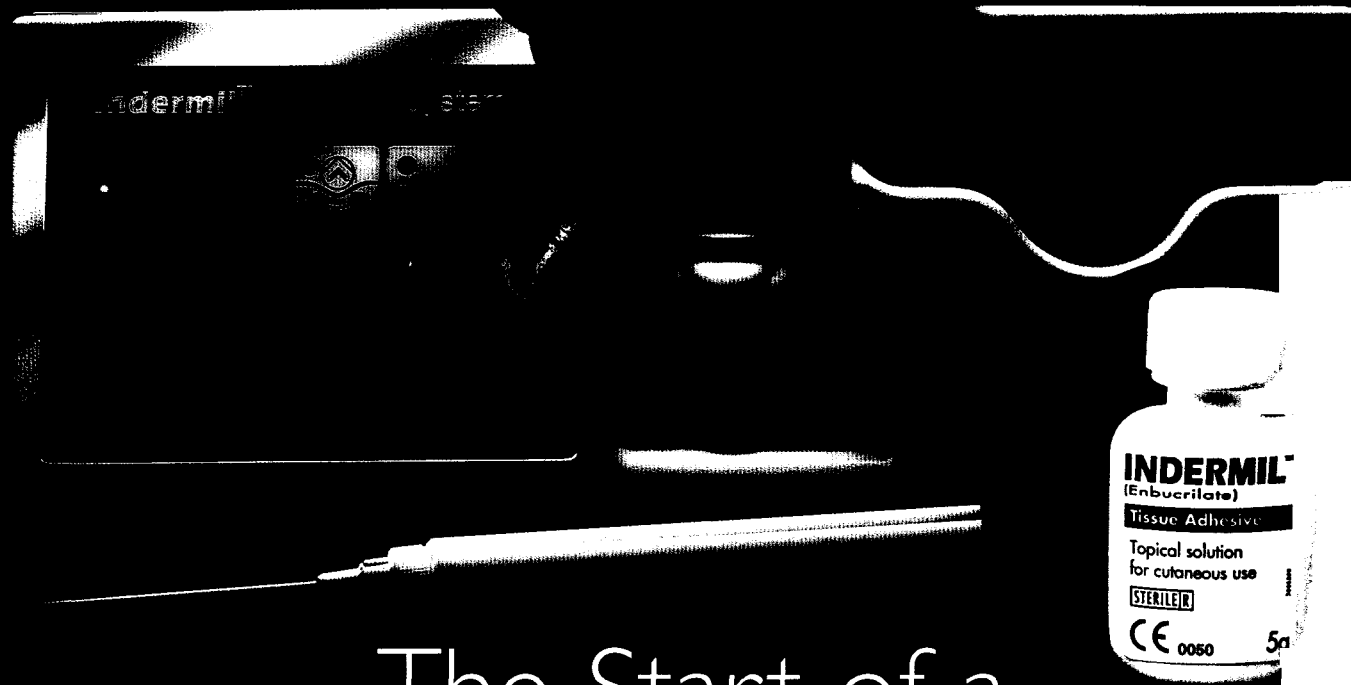
features:

Disability after labyrinthectomy
Obstruction of the nasal valve
Laser assisted uvulopalatoplasty
(LAUP)
Candida – the cancer of silastic
Hearing loss in multiple sclerosis

V o l

1 1 0

No 3

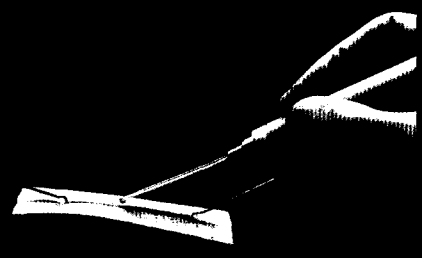


The Start of a Wound Closure Revolution

Indermil™ is a revolutionary new tissue adhesive wound closure system. For the first time, an advanced, gamma-sterilised, non-pigmented tissue adhesive has been combined with precision electronic delivery technology. Indermil™ adhesive allows rapid wound closure, with reduced scarring and low risk of infection.

Touchpad programmed delivery brings unprecedented accuracy and control. Now wound closure can be less traumatic and more efficient than has ever been possible before.

Telephone 01707 821255
(Fax 01707 821152) and discover the future of wound closure today.



- **RAPID** - Accelerate procedure, maximising patient comfort
- **REDUCED SCARRING** - No tissue deformation, minimises scarring
- **REDUCED TRAUMA** - Reduces trauma associated with conventional techniques
- **REDUCED RISK OF INFECTION** - Can achieve complete tissue adhesion, reducing the risks of infection
- **PRECISION** - Unique adhesive system enables precise wound closure even in less accessible areas
- **EXTENDED SHELF LIFE**

INDERMIL™
Wound Closure Redefined

Loctite UK Limited
Biomedical Division

PLEASE FORWARD ME DETAILS OF THE INDERMIL WOUND CLOSURE SYSTEM I WOULD LIKE TO SEE AN INDERMIL DEMONSTRATION

NAME POSITION SPECIALITY

HOSPITAL/CLINIC ADDRESS

POSTCODE TELEPHONE

The Journal of Laryngology and Otology

(Founded in 1887 by MORELL MACKENZIE and NORRIS WOLFENDEN)

Edited by NEIL WEIR

Assistant Editors CAROL WENGRAF, RICHARD RAMSDEN, DAVID PROOPS, VALERIE LUND, HENRY GRANT, ANDREW JONES, GUY KENYON,
MICHAEL ROTHERA, MARTIN BAILEY, LIAM FLOOD, PATRICK BRADLEY & NICK JONES

Production Editors GILLIAN GOLDFARB & JENNIFER ALMOND

INSTRUCTIONS FOR AUTHORS

1. Original articles which have not been published elsewhere are invited and should be sent to the Editor. They are considered for publication on the understanding that they are contributed to this *Journal* solely. Reproduction elsewhere in whole or in part, is not permitted without the previous written consent of the Author and Editor and the customary acknowledgement must be made. Normally an original main article should not exceed 7500 words.

Longer articles or theses will be considered for publication as *Supplements*, at the expense of the authors or their employing authorities.

2. Manuscripts should be **typewritten in duplicate** on one side of the paper only (A4 297 x 210 mm) and double spaced, with wide margins.

Begin each component on a new page in the following sequence: title page, abstract, text, acknowledgements, references, tables and legends.

(a) **Title page**—Titles should be short with names of the authors, higher degrees only. Details of the departments in which the authors work should be put lower down. An address for correspondence should be supplied together with the author who should receive this; this will ultimately appear beneath the list of references. Any change of address should be notified. If the paper was presented at a meeting, the details of this must be given and will be inserted at the bottom of the first page of printed script.

(b) **Abstract**—This should contain not more than 150 words and include a statement of the problem, the method of study, results and conclusions; a 'summary' section should **not** be included in the main manuscript. **No paper will be accepted without an abstract.**

(c) **Key Words**—Only those appearing as Medical Subject Headings (MeSH) in the supplement to the Index Medicus may be used; where no appropriate word(s) are listed those dictated by common sense/usage should be supplied.

(d) **Text**—Suggested outline—(1) introduction, (2) materials and methods, (3) results, (4) discussion, (5) conclusion.

(e) **Tables** are adjuncts to the text and should not repeat material already presented.

(f) **Illustrations**—Two sets of illustrations, one with each copy of the manuscript, must be submitted and all authors should remember that the single column width is 80mm. One set of illustrations should, therefore, not exceed this width and they should ensure that the essential features are illustrated within this dimension.

Coloured illustrations will be charged to authors, unless a special grant is authorized by the Editor.

Written permission from the publisher must be provided to the *Journal* in order to republish material with copyright elsewhere and also from the senior author where necessary. Consent to be obtained from a patient if a photograph of their face is to be reproduced.

(g) **Measurements** must be in metric units, with *Système Internationale* (SI) equivalents given in parentheses.

(h) **References**—For *Journal* articles, The Harvard system of recording references should be used, e.g. Green, C. and Brown, D. (1951) The tonsil problem. *Journal of Laryngology and Otology* 65: 33–38. A paper written by more than two authors should be abbreviated in the text, e.g. Green *et al.* (1951), but *all* the authors should be given in the list of references. The titles of all Journals should be given without abbreviation. **References should be listed in alphabetical order**; use of the Vancouver system will **not** be accepted.

For single-author books, the following style should be used: Green, C. (1951) *The tonsil problem*, 2nd Edition. vol. 1, Headley Brothers Ltd., Ashford, Kent, pp 33–38.

For papers in multi-books with one or more editors, the reference should include the title of the chapter and the names of the editors, together with the number of the edition as e.g. Brown, D. (1951) Examination of the ear. In *Diseases of the Ear, Nose and Throat*. 2nd Edition. (White, A., Black, B., eds.), Headley Brothers Ltd., Ashford, Kent, pp 33–38.

It is most important that authors should verify personally the accuracy of every reference before submitting a paper for publication. The names of authors cited in the References should be given in alphabetical order.

(i) **Drugs**—The proper names of drugs must be used. One reference can be made to the brand name if it is felt to be important to the study.

(j) **Financial disclosures**—In the submission letter to the Editor, the authors must list all affiliations with or financial involvement in, organizations or entities with a direct financial interest in the subject matter or material of the research discussed in the manuscript.

(k) **Declaration**. Each manuscript must be accompanied by a letter of declaration to be signed by each author to confirm that they have seen, read and approve the contribution bearing their name.

(l) **Rejections**—All manuscripts which are rejected will no longer be returned to the authors. Those submitting papers should, therefore, ensure that they retain at least one copy and the reference numbers, if any, of the illustrations. The only exception to this will be those manuscripts with colour illustrations which will be returned *automatically* by Surface Mail.

(m) **Facsimile (FAX)**—All authors should send a Facsimile number whenever possible to speed communication; this particularly applies to those outside the United Kingdom. Manuscripts with no visual illustrations (X-rays/pathology) may be sent by facsimile.

3. Page proofs are sent to authors for corrections, which should be kept to a minimum; they must be clearly marked, and no extra matter added. Proofs should be returned within 5 days.

4. Orders for reprints must be sent when returning page proofs, and for this purpose special forms are supplied.

5. Editorial communications may be addressed to **The Editor, Journal of Laryngology and Otology, c/o Headley Brothers Ltd., The Invicta Press, Ashford, Kent TN24 8HH, or sent by FAX (01483 451874).**

6. **The annual subscription is £100.00 Institutions & Libraries US\$230.00; £85.00 Individuals US\$195.50; £45.00 Registrars, Residents and Interns.** (Those in training should submit a certificate from The Head of the Department giving details of their appointment; those who qualify must supply their *home* address for mailing direct). Claims to be made for missing issues within 6 months of each publication date.

7. Single copies of current or back numbers (when available) will be on sale at £12.00 each (including postage).

8. SUPPLEMENTS published at 'irregular' intervals with subscription, available separately on request.

9. All subscriptions, advertising and business communications should be sent to the publishers, or subscription agents.

HEADLEY BROTHERS LTD, THE INVICTA PRESS, ASHFORD, KENT

© *Journal of Laryngology and Otology Ltd., 1996* ISSN 0022-2151

Second class postage paid Rahway, N.J.

Postmaster: Send address corrections to The Journal of Laryngology and Otology, c/o Mercury

Airfreight International Ltd. Inc., 2323 Randolph Avenue, Avenel, N.J. 07001. Frequency of Publication: Monthly.

Instructions for Occasional Articles

Review Articles. Articles of this type, preferably not exceeding 3,000 words will be considered but the author(s) are expected to be a recognized authority on the topic and have carried out work of their own in the relevant field.

Historical Articles. Articles of this type are generally encouraged, but it is obvious that they have to provide some new information or interpretation, whether it be about a well-known person or for example an instrument associated with him, but those from within a Hospital's own department who have made a hitherto less well-known contribution would be welcome.

Audit Articles. Articles should be of general audit interest—not specifically departmental. It should always be demonstrated that the 'audit cycle' has been completed.

'Silence in Court'. Articles on medicolegal topics are welcome but a preliminary letter written beforehand is requested to ensure that the contribution would be appropriate.

Short Communications. This feature will be used on an occasional basis. Examples of material suitable for inclusion under this title would be, for example, a piece of work which was of clinical interest but had failed to produce findings which were of statistical significance; where an investigative technique has been applied to an allied field, not warranting a further in-depth description of its earlier application and methodology.

Radiology in Focus. Short reports on cases in which the radiology has been crucial in the making of the diagnosis or the management of a particular case now appear on a monthly or bimonthly basis. This spot is to encourage clinicians and radiologists to produce material of particular interest in the specialty and to encourage co-operation in this field. Only presentations with first-class illustrations can be accepted and these must emphasize a problem of unusual clinical interest.

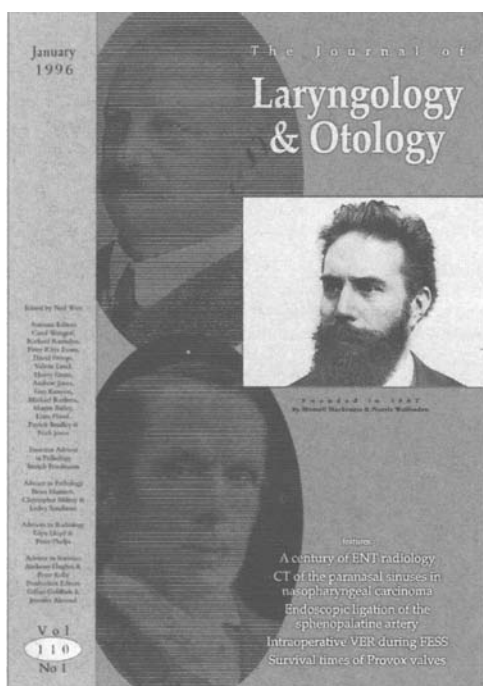
Pathology in Focus. Articles which are of pathological interest with particular emphasis on the way the diagnosis was achieved now appear on a monthly or bimonthly basis. It is hoped that clinicians will involve their pathologists in these reports, and all illustrations must be of first-class quality. Where a department, particularly those overseas, may not have such specialized facilities. It may be possible, if a block or several unstained sections are provided for our Adviser to produce or supplement the illustration submitted. Only contributions of particular pathological interest will be accepted.

Oncology in Focus. This new feature is for papers concerned with oncological treatment and investigation.

Letters to the Editor. This feature has been re-introduced to give those who wish to comment about a paper previously published within the *Journal*, an opportunity to express their views. Wherever possible, the original author is asked to add his further comment, thereby adding to the value of the contribution. Such letters should be sent as soon as possible after publication of each month's issue of the *Journal* in the hope of including them early thereafter.

'Mini-papers', such as those which appear in the *British Medical Journal*, *Lancet*, or *New England Journal of Medicine*, will not be acceptable except on the rare occasion that they bring information of immediate interest to the reader.

EVERY MONTH... THE BEST IN ENT



The Journal of Laryngology and Otology was the first British journal in the ENT field. Since 1887, it has remained the definitive information resource for surgeons, consultants and students. The Journal is run as a charity to promote education and knowledge in all spheres of Laryngology, Rhinology, Otology and related fields.

The JLO is very much an international journal with contributors from around the world and readers from over 80 countries.

The JLO contains main Articles, case reports and short communications from all over the world. Other contents include the quarterly book review, selected abstract service, and every ten years there is a comprehensive index issue published. By subscribing to the JLO, you not only gain everyday access to this valuable source of information, but also assist in the promotion of excellence in the ENT domain.

The Journal of Laryngology and Otology

----- ORDER FORM -----

I wish to subscribe to the JLO for one year (12 issues)

Name: _____

Address: _____

Please tick one:

Standard Rate £85

City: _____ Postal Code _____

Standard Rate U.S. \$195.50

Country: _____

Registrars, residents and interns Rate £45 (with confirmation of status from head of department)

Grade: _____

Bill me

Mail to: Subscription Department
Journal of Laryngology and Otology
Headley Brothers Ltd
The Invicta Press
Ashford, Kent TN24 8HH
ENGLAND

Cheques must be in pounds sterling or US dollars drawn on a US bank payable to Headley Brothers Ltd.

or Fax to: +44 1233 612345

JLO/MAR 96



WEEK OF THE NOSE
September 7-13,
1996
Ghent, Belgium

XVI Congress of the European Rhinologic Society
XV International Symposium on Infection and Allergy
of the Nose

VIII Congress of the International Rhinologic Society
Ghent, Belgium September 8-12, 1996
preceded and followed by symposia and courses on
rhinology

The official language of **ERS/ISIAN/IRS** will be English

President: P. Van Cauwenberge (B)

Vice-Presidents:

B. Bertrand (B) – P. Clement (B)

E. Kem (USA) – M. Tos (DK)

Secretary General: K. Ingels (B)

Guest of Honour: M. Okuda (J)

For information, contact:

Secretariat

ERS/ISIAN/IRS 1996

Semico N.V.

Lange Kruisstraat 12 D

9000 Ghent, Belgium

Telephone +32-9-233 86 60

Fax +32-9-233 85 97

E-mail: info@semico.be



**Institute of Laryngology
and Otology**
University College London
**Royal National Throat,
Nose and Ear Hospital**



MSc AUDIOLOGICAL MEDICINE

A multi-disciplinary taught course providing a comprehensive understanding of the scientific, technical and medical basis of Audiological Medicine is offered to Audiological Physicians, Otolaryngologists, Community Physicians, Paediatricians and Neurologists, commencing 23 September 1996.

The course may be taken full-time over one calendar year or over two years on a part-time basis.

The unique facilities, clinical material and breadth of research experience of the staff at the Institute and Hospital provide a perfect learning environment.

Further details from: The Course Secretary,
Institute of Laryngology and Otology,
330/332 Gray's Inn Road,
London WC1X 8EE
Tel. 0171-915-1590 or 0171-915-1630
Fax. 0171-278-8041

COMPLETE YOUR COLLECTION



Past copies of The Journal of Laryngology and Otology are available if you wish to build a complete collection of the definitive information resource for surgeons, consultants and students.

Most issues, from 1887 to the present day are available to be ordered at £13 a copy plus postage.

To order the back issues fax +44 (0) 1233 612345 or write to:

Sheila Hubbard
Subscription Manager
Journal of Laryngology and Otology
Headley Brothers Ltd
Invicta Press
Ashford, Kent
TN24 8HH
United Kingdom

The best in ENT...every month
The Journal of Laryngology and Otology

Tel: 0191 565 6256
Fax: 0191 569 9202



ENT Department
Woodford Williams Wing
District General Hospital
Kayll Road
Sunderland SR4 7TP

SYMPOSIUM AND WORKSHOP ON SURGICAL VOICE RESTORATION FOLLOWING LARYNGECTOMY

Professor E Blom • Mr P Samuel • Mr F Stafford

Venue: Van Mildert College, Durham
29th and 30th March 1996

The Department of Head and Neck Surgery, City Hospitals Sunderland presents an intensive and comprehensive 2 day workshop on surgical voice restoration led by Professor Eric Blom, the world's leading expert of valve voice restoration. Lectures, seminars and demonstrations on all aspects of surgical voice restoration and valve care will be presented. This course is suitable for Otolaryngologists / Head and Neck Surgeons, Speech Therapists and Nurses involved in the management and care of laryngectomy patients with or without an established voice restoration service.

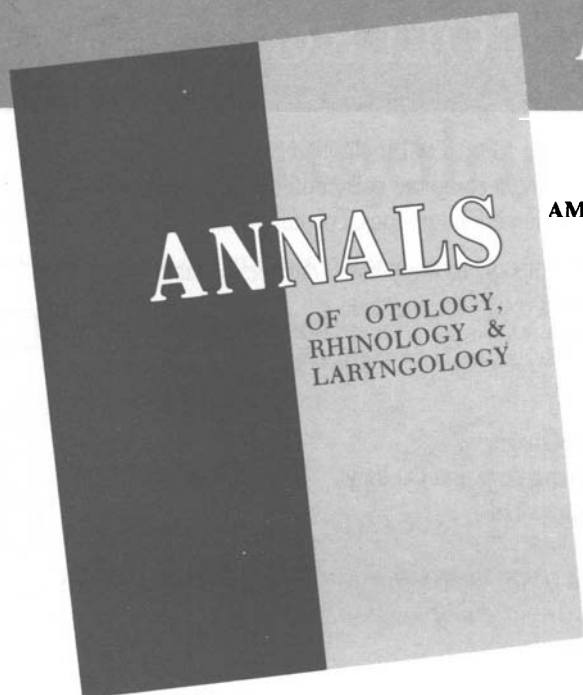
Detailed programme available on request.

Course fee (including course dinner):

Surgeon / Speech Therapist team	£275.00
Surgeon	£250.00
Speech Therapist	£85.00



INVEST IN YOURSELF



OFFICIAL JOURNAL OF THE
AMERICAN LARYNGOLOGICAL ASSOCIATION
AMERICAN BRONCHO-ESOPHAGOLOGICAL ASSOC



1995 ANNUAL SUBSCRIPTION RATES

	RESIDENT*	INDIVIDUAL*	INSTIT
US	<input type="checkbox"/> \$54.00	<input type="checkbox"/> \$105.00	<input type="checkbox"/> \$155.00
FOREIGN	<input type="checkbox"/> \$67.00	<input type="checkbox"/> \$125.00	<input type="checkbox"/> \$175.00

*Individual, resident, and student subscriptions must be in the individual's name and must be billed to and paid for by the individual.

NEW SUBSCRIBERS RECEIVE 2 ISSUES
FREE WITH PAID SUBSCRIPTION

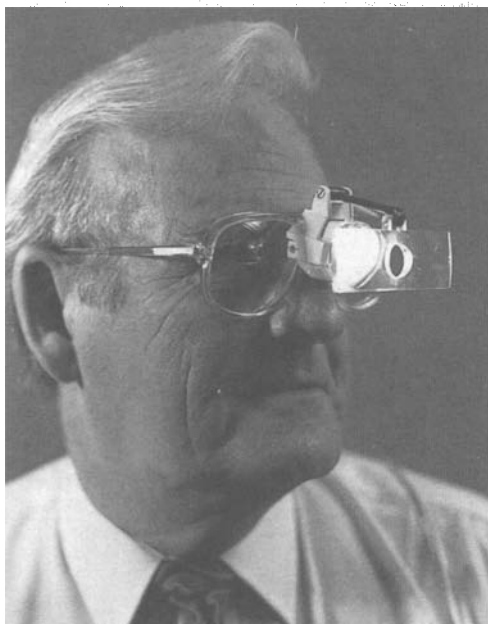


Mail to or call:
ANNALS PUBLISHING CO
4507 LACLEDE AVENUE
ST LOUIS, MISSOURI 63108
(314) 367-4987
FAX (314) 367-4988



- MONTHLY ISSUES • SUPPLEMENTS
- PEER REVIEWED • CLINICAL AND RESEARCH
- IMAGING CASE STUDIES • PATHOLOGY CONSULTATIONS
- LETTERS TO THE EDITOR • BOOK REVIEWS

THE VOROSCOPE COAXIAL

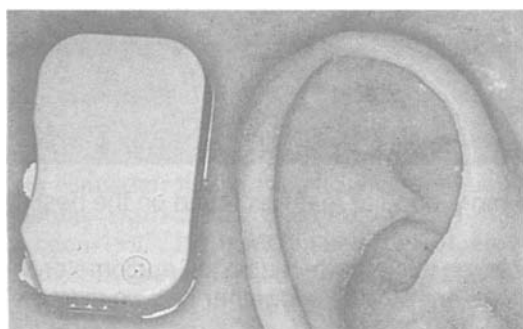


makes light of those LITTLE problem areas.
by providing:

- ❖ EYE-ALIGNED ILLUMINATION OF 12,000 LUX AT ONLY 85g.
- ❖ BELT CLIP BATTERY AND COMPLETE MOBILITY.
- ❖ CONTINUOUS USAGE CAPABILITY.
- ❖ VARIABLE MAGNIFICATION OF X1.5, X1.75 AND X2.25
- ❖ EYE STRAIN AND FATIGUE RELIEF.
- ❖ LOW COST AND CONVENIENCE.
- ❖ PRESCRIPTION LENSES IF REQUIRED.
- ❖ AVAILABILITY IN EITHER BLACK OR WHITE.
- ❖ **IDEAL FOR USE IN THEATRE, CLINIC, WARD, CONSULTING ROOM, EMERGENCY AND DOMICILIARY CALLS.**

G A R T H J E S S A M I N E H E A L T H C A R E

Unit 5, The Courtyard, Matthewsgreen Farm, Matthewsgreen Road, Wokingham, Berkshire, RG41 1JX Telephone: (01734) 786916. Facsimile: (01734) 774064



*... a
development of
the Bone
Anchored
Hearing Aid.*

BAHA Classic 300

The updated BAHA has **three main improvements**:

The first is the development of a **continuous base tone control** which has flexibility to cover the frequency response range of the four previous models.

The second improvement is the adoption of ABS plastic for the hearing aid casing which offers a more **aesthetic moulded design**, greater strength and colour stability.

THE BAHA CLASSIC 300 ALSO COMES WITH A **FIVE YEAR WARRANTY**.

Indications for the BAHA

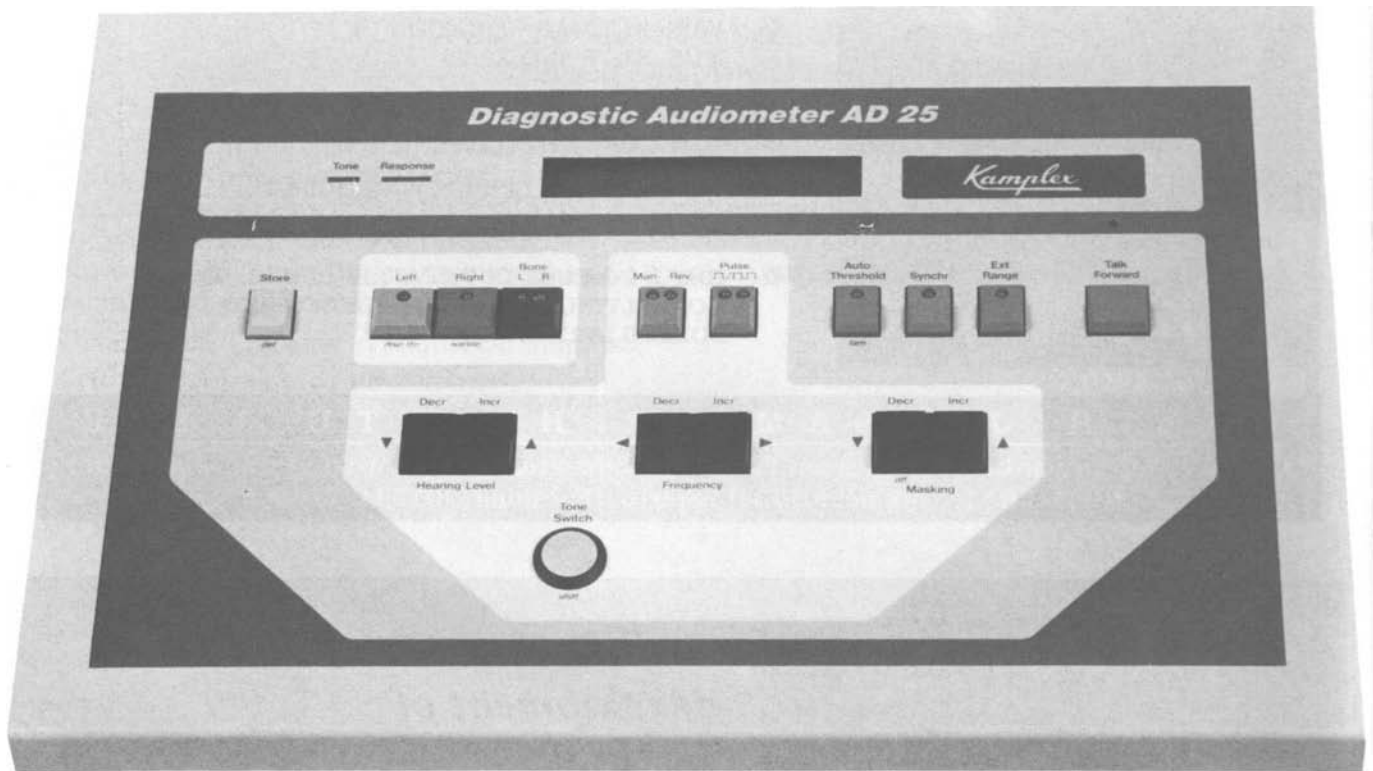
- **Chronic Otitis Media** - with conductive or mixed hearing loss where the use of air conduction devices is contraindicated.
- **Congenital Malformation** - of the external or middle ear where an air conduction hearing aid cannot be used or is contraindicated.
- **Otosclerosis** - in some cases.

For further information contact Michael Mercer on tel. +44 (0) 1895 430650.

 **Nobelpharma**

The AD 25 DIAGNOSTIC AUDIOMETER

from *Kamplex*®



The latest addition to the Kamplex range incorporates many of the more popular features found on the best selling AC in a lightweight low cost package.

The attractive low profile design and easy-to-read back-lit display makes this a perfect desktop audiometer. Air Conduction, Bone Conduction and Narrow-band masking in 5dB steps are available together with an extremely useful talk-through facility.

Superbly engineered for reliability and portability (with the optional case), the AD25 also offers an automatic test facility. A patient's audiometric results whether recorded manually or automatically may be stored and later recalled.

*Auto Threshold complies with ISO 8253, Audiometric Test Methods

- **Robust and Portable (with optional carrying case)**
- **Clear, easy to read Back-lit Display**
- **AC/BC/Narrow-Band Masking**
- **Automatic Test Facility (Conforms to ISO 8253)**
- **Pure, Warble and Pulsed Tones**
- **Results Storage and Recall Capability**
- **Insert Masking**

P.C.WERTH LTD

Audiology House, 45 Nightingale Lane, London SW12 8SP
Telephone: 0181-675 5151 Fax: 0181-675 7577