

Erratum: “Nanoscale morphology and indentation of individual nacre tablets from the gastropod mollusc *Trochus niloticus*” [J. Mater. Res. 20, 2400 (2005)]

B.J.F. Bruet

Department of Materials Science and Engineering, Massachusetts Institute of Technology, Cambridge, Massachusetts 02139

H.J. Qi and M.C. Boyce

Department of Mechanical Engineering, Massachusetts Institute of Technology, Cambridge, Massachusetts 02139

R. Panas, K. Tai, L. Frick, and C. Ortiz

Department of Materials Science and Engineering, Massachusetts Institute of Technology, Cambridge, Massachusetts 02139

(Received 27 January 2005; accepted 2 May 2005)

An error occurred while printing this article in the September issue of the *Journal of Materials Research*. Figure 12 was resized incorrectly. The correct figure appears below:

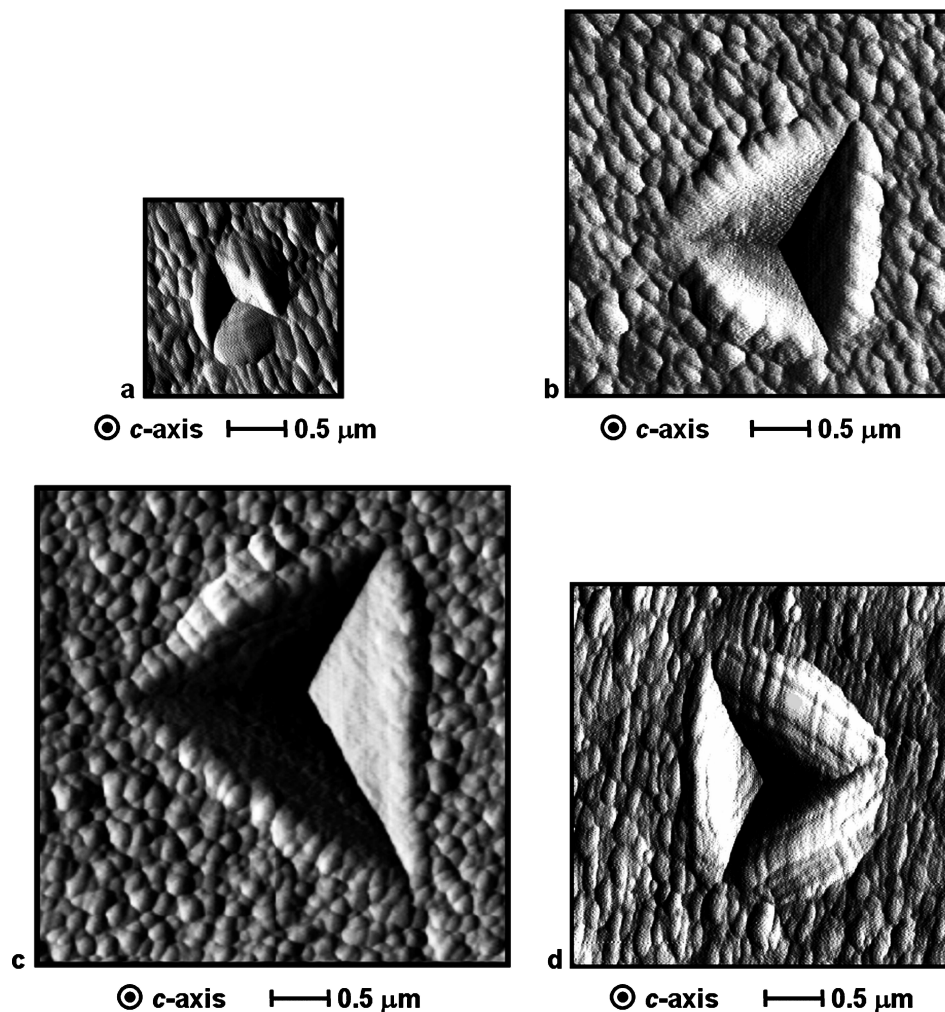


FIG. 12. Tapping mode AFM images of top down view of residual nanoindentation impression on individual freshly cleaved *Trochus niloticus* nacre tablet; (a) maximum load = 1000 μN and 1.8 μm scan, (b) maximum load = 5000 μN and 3 μm scan, (c) maximum load = 1×10^4 μN and 3.7 μm scan, and (d) nacre incubated in artificial seawater for 10 weeks and maximum load = 5000 μN, 3.0 μm scan. ⊙ indicates c-axis direction is out of the page.