

---

SPECIAL SERIES

# Neuroanatomical Correlates of Executive Functions: A Neuropsychological Approach Using the EXAMINER Battery

---

Heather Robinson,<sup>1</sup> Matthew Calamia,<sup>1</sup> Jan Gläscher,<sup>2</sup> Joel Bruss,<sup>3</sup> AND Daniel Tranel<sup>1,3</sup>

<sup>1</sup>Department of Psychology, University of Iowa, Iowa City, Iowa

<sup>2</sup>Department for Systems Neuroscience, University Medical Center Hamburg-Eppendorf, Hamburg, Germany

<sup>3</sup>Department of Neurology, Division of Behavioral Neurology and Cognitive Neuroscience, University of Iowa College of Medicine, Iowa City, Iowa

(RECEIVED January 15, 2013; FINAL REVISION May 4, 2013; ACCEPTED May 6, 2013; FIRST PUBLISHED ONLINE June 13, 2013)

## Abstract

Executive functions (EF) encompass a variety of higher-order capacities such as judgment, planning, decision-making, response monitoring, insight, and self-regulation. Measuring such abilities quantitatively and establishing their neural correlates has proven to be challenging. Here, using a lesion-deficit approach, we report the neural correlates of a variety of EF tests that were developed under the auspices of the NINDS-supported EXAMINER project (Kramer, 2011; [www.examiner.ucsf.edu](http://www.examiner.ucsf.edu)). We administered a diverse set of EF tasks that tap three general domains—cognitive, social/emotional, and insight—to 37 patients with focal lesions to the frontal lobes, and 25 patients with lesions outside the frontal lobes. Using voxel-based lesion-symptom mapping (VLSM), we found that damage to the ventromedial prefrontal cortex (vmPFC) was predominately associated with deficits in social/emotional aspects of EF, while damage to dorsolateral prefrontal cortex (dlPFC) and anterior cingulate was predominately associated with deficits in cognitive aspects of EF. Evidence for an important role of some non-frontal regions (e.g., the temporal poles) in some aspects of EF was also found. The results provide further evidence for the neural basis of EF, and extend previous findings of the dissociation between the roles of the ventromedial and dorsolateral prefrontal sectors in organizing, implementing, and monitoring goal-directed behavior. (*JINS*, 2014, *20*, 52–63)

**Keywords:** Insight, Self-monitoring, FrSBe, Lesion, Cognitive control, Empathy

## INTRODUCTION

Executive functioning (EF) is a broad term encompassing domains such as volition, planning and decision-making, purposive action, self-regulation, and effective performance (Lezak, Howieson, Bigler, & Tranel, 2012). Although a diverse set of brain regions are involved in executive functioning, the frontal lobes are considered to provide the principal neural substrate (e.g., Stuss, 2011; Stuss & Knight, 2002). Within the frontal lobes, the division between the dorsolateral prefrontal cortex (dlPFC) and the ventromedial prefrontal cortex (vmPFC) is critical in understanding two distinct types of abilities subsumed under the term executive functioning: “metacognitive executive functions” and “emotional/motivational executive functions,” respectively (Ardila, 2008; Stuss, 2011).

Metacognitive executive functions are those which organize and monitor goal-directed behavior. These functions include abilities assessed by traditional clinical and laboratory measures of executive functioning (e.g., planning, response inhibition, working memory) (Ardila, 2008). Various structural models of these metacognitive functions have been proposed in the literature. For example, Latzman and Markon (2010) identified a three factor structure (“conceptual flexibility,” “monitoring,” “inhibition”) for scores on the Delis-Kaplan Executive Function System (D-KEFS). This structure is similar to a three-factor model (“shifting,” “updating,” “inhibition”) found using a different set of executive functioning measures (Miyake et al., 2000).

In a lesion study of popular neuropsychological measures of these “metacognitive” types of executive functions (e.g., Wisconsin Card Sorting Test, Controlled Oral Word Association Test), a relationship between deficits in these functions and damage to the dlPFC and anterior cingulate

---

Correspondence and reprint requests to: Daniel Tranel, Department of Neurology, University of Iowa Hospitals and Clinics, 200 Hawkins Drive, Iowa City, Iowa 52242. E-mail: [daniel-tranel@uiowa.edu](mailto:daniel-tranel@uiowa.edu)

was found (Gläscher et al., 2012). This is consistent with a large body of literature that has suggested a relationship between cognitive components of executive functioning and the dlPFC and anterior cingulate (for reviews, see Lezak et al., 2012; Stuss & Levine, 2002). Moreover, in a meta-analysis of functional neuroimaging studies of cognitive measures of executive functioning, the dlPFC and anterior cingulate were found to be the “critical nodes” activated in both healthy adults and patients with schizophrenia (Minzenberg, Laird, Thelen, Carter, & Glahn, 2009).

Emotional and motivational executive functions involve “coordinating cognition and emotion” (Ardila, 2008). These functions are related to the vmPFC (Lezak et al., 2012; Stuss et al., 2002). Although patients with vmPFC damage maintain their formal knowledge of social norms—that is, they can “talk a good game” and give appropriate verbal responses to social hypotheticals (e.g., Beer, John, Scabini, & Knight, 2006; Saver & Damasio 1991), they fail to process emotional information normally, and as a consequence have impairments in affective and social decision-making, that is, implementing social knowledge in the real world, in real time, and “on line” (Bechara, 2004; Beer et al., 2006). As a result of vmPFC damage, patients experience significant changes in emotional (e.g., blunted affect) and social (e.g., increases in inappropriate social behavior) aspects of personality functioning (Barrash, Tranel, & Anderson, 2000; Barrash et al., 2011). Atrophy of the vmPFC has been linked to increases in disinhibited behavior that occur in patients with frontotemporal dementia (Hornberger, Geng, & Hodges, 2011; Massimo et al., 2009).

VmPFC patients make decisions that show “myopia for the future” (Bechara, Damasio, & Damasio, 2000), and the patients manifest an inability to forego choices with immediate positive consequences (and negative long-term consequences) for those with better long-term outcomes (but less appealing immediate consequences). This decision-making impairment is well quantified by the Iowa Gambling Task (IGT), a value-based decision-making task that factors together immediate and delayed rewards and punishments, along with a degree of uncertainty. The association of vmPFC damage and impaired IGT performance was recently confirmed in a large-scale analysis of neurological patients with focal brain lesions (Gläscher et al., 2012). According to the somatic marker hypothesis (Damasio, 1994), the role of the vmPFC in executive functioning can be explained through its role as a critical region for processing emotional information important for many aspects of decision-making, especially in social contexts and under conditions of uncertainty, ambiguity, and conflict (Bechara et al., 2000). Functional neuroimaging approaches using the IGT in healthy participants have also supported a role for the vmPFC in value-based decision-making (Li, Lu, D’Argembeau, Ng, & Bechara, 2010; Northoff et al., 2006). Similar findings have been obtained with a variety of reinforcement and reward-learning paradigms in the functional neuroimaging literature (see reviews by O’Doherty, 2004; Wallis, 2007).

The ability to pursue goal-directed behavior depends on intact knowledge of one’s cognitive and behavioral abilities.

Therefore, insight can also be considered to be an aspect of executive functioning (cf., Tranel, Anderson, & Benton, 1994). VmPFC damage is associated with a lack of insight into cognitive and behavior changes (Barrash et al., 2000). In one social interaction task, vmPFC patients made inappropriate self-disclosures to strangers, but lacked insight into their inappropriate behavior (Beer et al., 2006). Atrophy of the vmPFC is associated with impaired insight regarding cognitive deficits that occur in neurodegenerative diseases (Rosen et al., 2010), including in patients with frontotemporal dementia (Massimo et al., 2013). Insight, and self-awareness more generally, has been consistently linked to the prefrontal cortices, especially the medial sector, in functional imaging work (e.g., Kelley et al., 2002; see Philippi, Duff, Denburg, Tranel, & Rudrauf, 2012, for a lesion study confirming these findings).

Some aspects of executive functioning rely on both the dlPFC and vmPFC. For example, apathy, which includes symptoms of diminished interest and motivation, is associated with atrophy in both the dlPFC and vmPFC in patients with amyotrophic lateral sclerosis (Tsujimoto et al., 2011) and frontotemporal dementia (Zamboni, Huey, Krueger, Nichelli, & Grafman, 2008). While impairments in both cognitive empathy (the ability to take the perspective of another person) and emotional empathy (the ability to personally experience emotions related to another person’s circumstances) are associated with vmPFC damage, dlPFC damage has also been associated with impaired cognitive empathy (Eslinger, 1998; Eslinger, Moore, Anderson, & Grossman, 2011).

It should be noted that while the dlPFC and vmPFC are critical regions for a variety of executive abilities, other brain regions clearly play a role in executive functioning. For example, the anterior temporal lobes have been linked to both inhibition (Hornberger et al., 2011) and empathy (Eslinger et al., 2011). Regions in the parietal lobe, including the superior parietal lobule and intraparietal sulcus, have been related to cognitive components of executive functioning (Collette et al., 2005; Koenigs, Barbey, Postle, & Grafman, 2009).

In the current study, we aimed to explore the neural basis of cognitive, social/emotional, and insight components of executive functioning by using voxel-based lesion-symptom mapping (VLSM) in a sample of patients with focal brain damage. This study represents a replication and extension of a recent VLSM study by Gläscher et al. (2012), using a different and expanded set of EF tests (those from the EXAMINER battery, see below). We sought to replicate findings from Gläscher et al. (2012) involving cognitive measures of executive functioning and value-based decision-making, and to extend the analysis to include measures of social/emotional functioning and insight. We hypothesized that cognitive EF measures would primarily be associated with dlPFC and anterior cingulate, while social/emotional and insight EF measures would primarily be associated with vmPFC. This study took place as part of the Executive Abilities: Measures and Instruments for Neurobehavior

**Table 1.** EXAMINER tasks by executive domain

Cognitive measures	Social/emotional measures	Insight measures
Verbal Fluency Composite*	Unstructured Task	Verbal Fluency Insight
Working Memory Composite*	Social Norms Questionnaire	Self-Monitoring Insight
Cognitive Control Composite*	IRI—Perspective Taking	
General Executive Composite*	IRI—Empathic Concern	
FrSBe—Executive Dysfunction	Revised Self-Monitoring Scale	
	FrSBe—Apathy	
	FrSBe—Disinhibition	

\*Tests included in these composite measures are listed in the Methods section under Cognitive Measures.  
FrSBe = Frontal Systems Behavior Scale. IRI = Interpersonal Reactivity Index.

Evaluation and Research (EXAMINER) project, which aimed to develop and validate a new omnibus measure of executive functioning which could be used in clinical research across a range of ages and clinical diagnoses (Kramer, 2011; [www.examiner.ucsf.edu](http://www.examiner.ucsf.edu)). Extensive data regarding the reliability (e.g., test–retest, interrater, internal consistency) and validity (e.g., convergent, discriminant) of the EXAMINER tests can be found in the EXAMINER manual. In general, the available psychometric evidence supports the use of the EXAMINER as a measure of executive functioning.

## METHODS

### Participants

Neurological patients with focal brain lesions ( $n = 62$ ) were recruited from the Iowa Neurological Patient Registry in the Division of Behavioral Neurology and Cognitive Neuroscience at the University of Iowa. These patients all had stable, focal brain lesions due to subarachnoid hemorrhage ( $n = 7$ ), surgical intervention ( $n = 20$ ), ischemic stroke ( $n = 29$ ), encephalitis ( $n = 2$ ), traumatic brain injury ( $n = 3$ ), and intracerebral hemorrhage ( $n = 1$ ). The majority of patients ( $n = 37$ ) had focal damage to the prefrontal cortex: 23 had damage which included regions of the ventromedial prefrontal cortex (vmPFC) and 14 had damage which included regions of the dorsolateral prefrontal cortex (dlPFC). In some cases, the area of damage extended outside of the vmPFC or dlPFC. The remainder ( $n = 25$ ) had damage to other brain regions outside the frontal lobes. All patients were tested in the chronic epoch of recovery, 3 or more months after lesion onset, and the neuropsychological and neuroimaging data were generally collected contemporaneously. The average age at time of testing for all participants in this study was 59 years ( $SD = 10.5$ ; range: 37 to 82 years). The average level of education of the sample was 14 years ( $SD = 2.6$ ; range, 12–20 years). A total of 40% of the sample was female ( $n = 25$ ). Most of the participants (58) were right-handed; 3 were left-handed, and 1 had mixed-handedness. The sample was 90% European-American (white). For most of the patients, collaterals (e.g., spouses or adult children) were available to complete informant questionnaires about

the patient's behavior. The sample sizes for each individual measure can be found in Figure 1. A subset of these patients ( $n = 27$ ) were also participants in the study by Gläscher et al. (2012). The current study was approved by the University of Iowa Institutional Review Board.

### Measures

All participants were administered the entire EXAMINER battery by a researcher in the Department of Neurology at the University of Iowa Hospitals and Clinics. The EXAMINER battery is comprised by both traditional cognitive tests of executive functioning (e.g., verbal fluency) and measures designed to assess social/emotional and metacognitive aspects of executive functioning (e.g., insight) (Kramer, 2011). These measures are listed in Table 1, and are briefly described below. A full description of the tasks can be found in the EXAMINER manual (Kramer, 2011). Some measures are completed by an informant who knows the patient; for these measures, data were available for only a subset of patients (see Figures 1 and 2 for the sample sizes for individual measures).

#### Cognitive measures

The cognitive tests of the EXAMINER battery are refinements of popular clinical and experimental tasks of executive functioning. Scores from various tests are best represented by a three-factor model of cognitive executive functioning, made up of (1) *verbal fluency* (scores from category and phonemic fluency tasks), (2) *working memory* (scores from N-back and Dot Counting tasks), and (3) *cognitive control* (scores from anti-saccade, flanker, set shifting tasks, and failures of inhibition across several tasks). In addition, a bifactor analysis found support for a global factor of *general executive functioning* comprised of scores from all the cognitive measures (Kramer, 2011). Based on these models, composite scores (viz., verbal fluency, working memory, cognitive control, and general executive functioning) were generated using a computer scoring program (Kramer, 2011; see Table 1).

As part of the EXAMINER-related assessment of the patients, the Frontal Systems Behavior Scale (FrSBe) was administered. This informant-report measure of a participant's

behavior contains three subscales (apathy, disinhibition, executive dysfunction) (Grace & Malloy, 2001). The executive dysfunction subscale, which includes items assessing behaviors such as perseveration, disorganization, and poor judgment, can be considered an index of the patient's real-world cognitive executive functioning, and we included that measure under our Cognitive Measures domain. The apathy and disinhibition FrSBe subscales were included under Social/Emotional measures, as below. For all FrSBe scales, the standardized *t* scores provided in the manual were used in the VLSM analyses.

### *Social/emotional measures*

The EXAMINER battery contains measures of social and emotional components of executive functioning. The Unstructured Task measures strategic planning and value-based decision-making, based on the Six-Elements Test (Shallice & Burgess, 1991). For the purposes of the VLSM analysis, this score was converted to an age-adjusted Z-score (Van Breukelen & Vlaeyen, 2005). The Social Norms Questionnaire is a measure of social knowledge in which the participant must decide whether or not a behavior is socially appropriate. The score used in the VLSM analysis was a Z-score based on the performance of neurologically healthy adults (see below). As part of the EXAMINER assessment, several other measures of a participant's social and emotional functioning were administered to informants who knew the participant well. The perspective-taking and empathic concern subscales of the Interpersonal Reactivity Index (IRI; Davis, 1983) were used as measures of cognitive and emotional empathy, respectively. The Revised Self-Monitoring Scale (RSMS; Lennox & Wolfe, 1984) measures a participant's ability to perceive the effect of their actions on another person and adjust their behavior accordingly. Sex-adjusted Z-scores of the empathy (the two IRI subscales) and self-monitoring scores were used in the VLSM analyses. The FrSBe apathy subscale, which measures a loss of motivation and engagement in activities, and disinhibition subscale, which measures impulsive and socially inappropriate behavior, were considered additional measures of social and emotional functioning.

### *Insight measures*

Measures of insight into cognitive functioning were administered to participants after they completed their first trials of phonemic and category fluency. Participants were asked to evaluate their performance relative to a hypothetical sample of 100 people who are similar to them in age and educational background. Participants were presented with an illustration of a normal distribution which included percentiles and written descriptions of how to interpret them, and asked to identify their level of performance. The score used in the VLSM analysis was a sum of two Z-scores reflecting the difference between the patient's actual and estimated performance for both category and letter fluency. The Revised Self-Monitoring Scale mentioned previously as an

informant-report measure was also used as a self-report measure of a participant's behavior. A difference score comparing the patient's self-report to the informant's report was used in the VLSM analysis.

## **Data Analysis**

### *Neuropsychological data*

The scores used in each individual analysis were coded so that lower scores would be associated with greater dysfunction and/or impairment. For insight, greater dysfunction/impairment was conceptualized as a participant overestimating his or her cognitive or self-monitoring abilities. Before using the EXAMINER composite scores, a confirmatory factor analysis (CFA) of the cognitive tests in the EXAMINER battery was performed to determine whether the factor structure identified in the EXAMINER manual applied to our dataset from patients with focal brain damage. As the verbal fluency composite is composed of two trials of letter fluency and two trials of category fluency, correlated residuals of the same type of trial were included in the CFA. The bifactor model allowing tests to load on both a global composite of executive functioning and specific factors was not tested due to our small sample size for that type of analysis.

To calculate Z-scores for many of the neuropsychological measures, we used a normative comparison group based upon a larger subset of neurologically healthy adults who completed the EXAMINER battery at multiple study sites (Kramer, 2011).

### *Statistical lesion analysis*

Lesions were analyzed from MRI scans (or, in a few cases where MRI was contraindicated, from CT scans). Individual lesions were manually traced and transferred onto a standardized brain using MAP-3; therefore, automatic image registration was not necessary (Fiez, Damasio, & Grabowski, 2000; Frank, Damasio, & Grabowski, 1997). This study used a non-parametric (Rorden, Karnath, & Bonilha, 2007) voxel-based lesion symptom mapping (VLSM) approach (Bates et al., 2003) to identify significant lesion-deficit relationships. In contrast to other lesion approaches, which often require continuous behavioral data to be dichotomized into "impaired" or "unimpaired" categories, or predefined anatomical groups to be created for comparison (e.g., vmPFC patients vs. nonfrontal patients), a VLSM approach allows for the analysis of continuous behavioral data across the voxels of the brain. In this way, it is similar to mass-univariate approaches to analyzing functional neuroimaging data (e.g., Friston, Ashburner, Kiebel, Nichols, & Penny, 2007). Comparisons between voxels were performed using the Brunner-Munzel test (Brunner & Munzel, 2000) in MRICron using the "Nonparametric Mapping" function (Rorden et al., 2007). At each voxel, this test compares the scores of patients with and without a lesion. Significant voxels ( $p < .05$ ) are those in

which patients with damage at that voxel scored significantly lower than patients without damage at that voxel, using the BM statistic. All brain voxels were included in the analysis. Statistical power maps were computed in the “Nonparametric Mapping” function, using the nonparametric Wilcoxon–Mann–Whitney probability to estimate a power threshold.

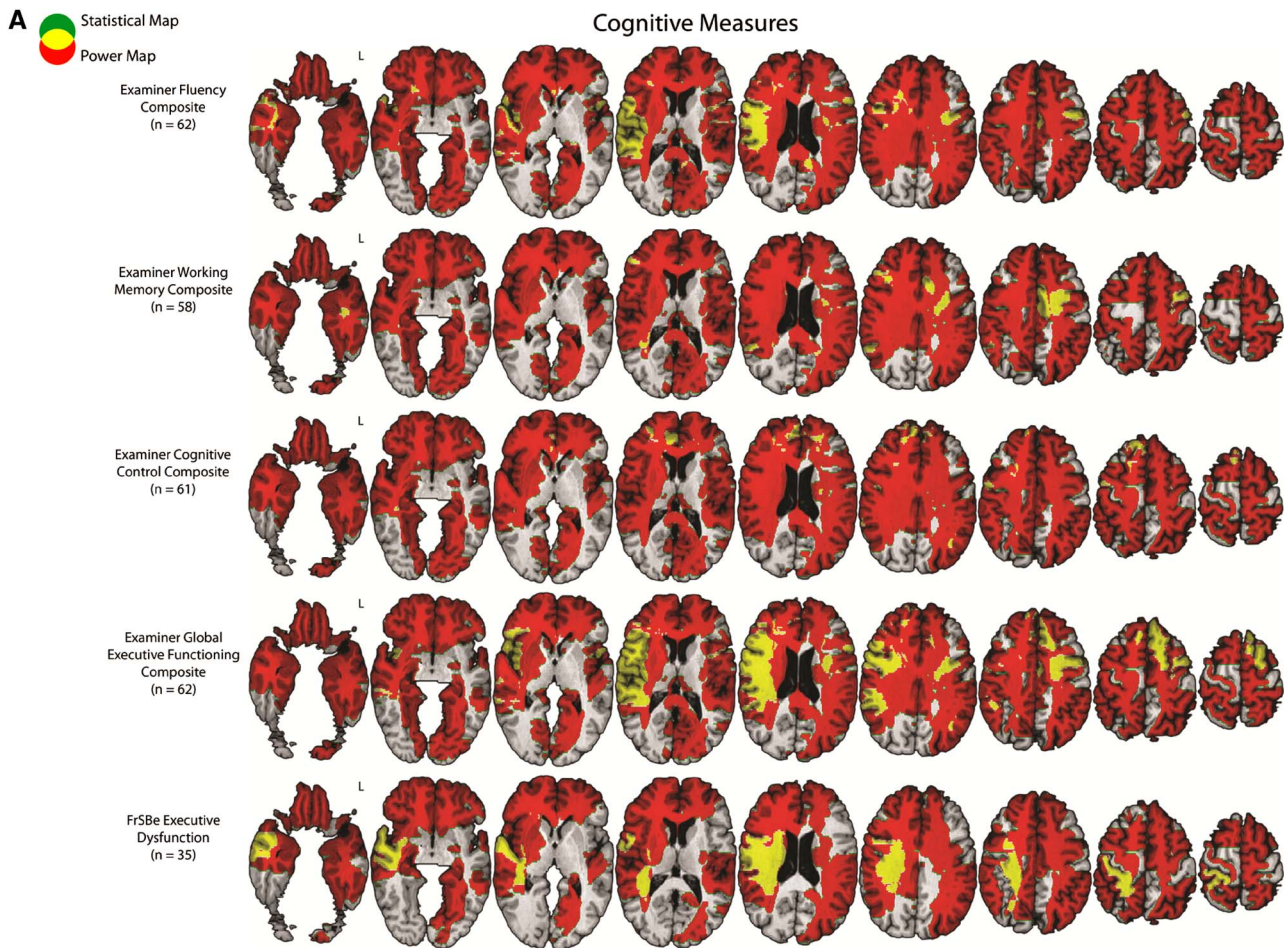
## RESULTS

### Power Maps

Power maps for each test score included in the study are depicted in Figure 1. Both red and yellow areas are regions in which we had sufficient power to detect a finding. Red is used to indicate areas in which we had sufficient power to detect a finding but *did not* obtain a significant result; yellow is used to indicate areas in which we had sufficient power and *did* obtain a significant result. In general, power was sufficient in most regions of the brain, including the prefrontal cortex.

### Cognitive Measures

The three-factor model of cognitive measures of executive functioning identified in the EXAMINER manual fit adequately in the present sample of patients with focal brain damage (CFA = 0.932; TLI = 0.904; RMSEA = 0.072; SRMR = 0.087). Therefore, the VLSM was carried out using the three composite scores generated by that model, namely, verbal fluency, working memory, and cognitive control (Figure 2A). The fluency composite was related to damage in the right dorsolateral region and the right superior temporal and middle temporal regions, as well as to left insula damage. The working memory composite was related to both frontal (i.e., the bilateral dlPFC and left mesial frontal cortex) and nonfrontal (i.e., left anterior temporal lobe and right angular gyrus) damage. The cognitive control composite was related to bilateral superior frontal damage, damage to the right anterior cingulate, and to a small area of right dlPFC damage. The general, global executive functioning composite was



**Fig. 1.** Statistical power maps for the measures included in this study. Red and yellow identify areas with sufficient lesion coverage to detect statistical significance at  $p < .05$ . Red is used to indicate areas in which we had sufficient power to detect a finding but *did not* obtain a significant result; yellow is used to indicate areas in which we had sufficient power and *did* obtain a significant result. Both green and gray identify areas without sufficient power. Green is used to indicate areas in which we did not have sufficient power to detect a finding but *did* obtain a significant result; gray is used to indicate areas in which we did not have sufficient power and *did not* obtain a significant result. (A) Cognitive Measures. (B) Social/Emotional Measures. (C) Insight Measures.

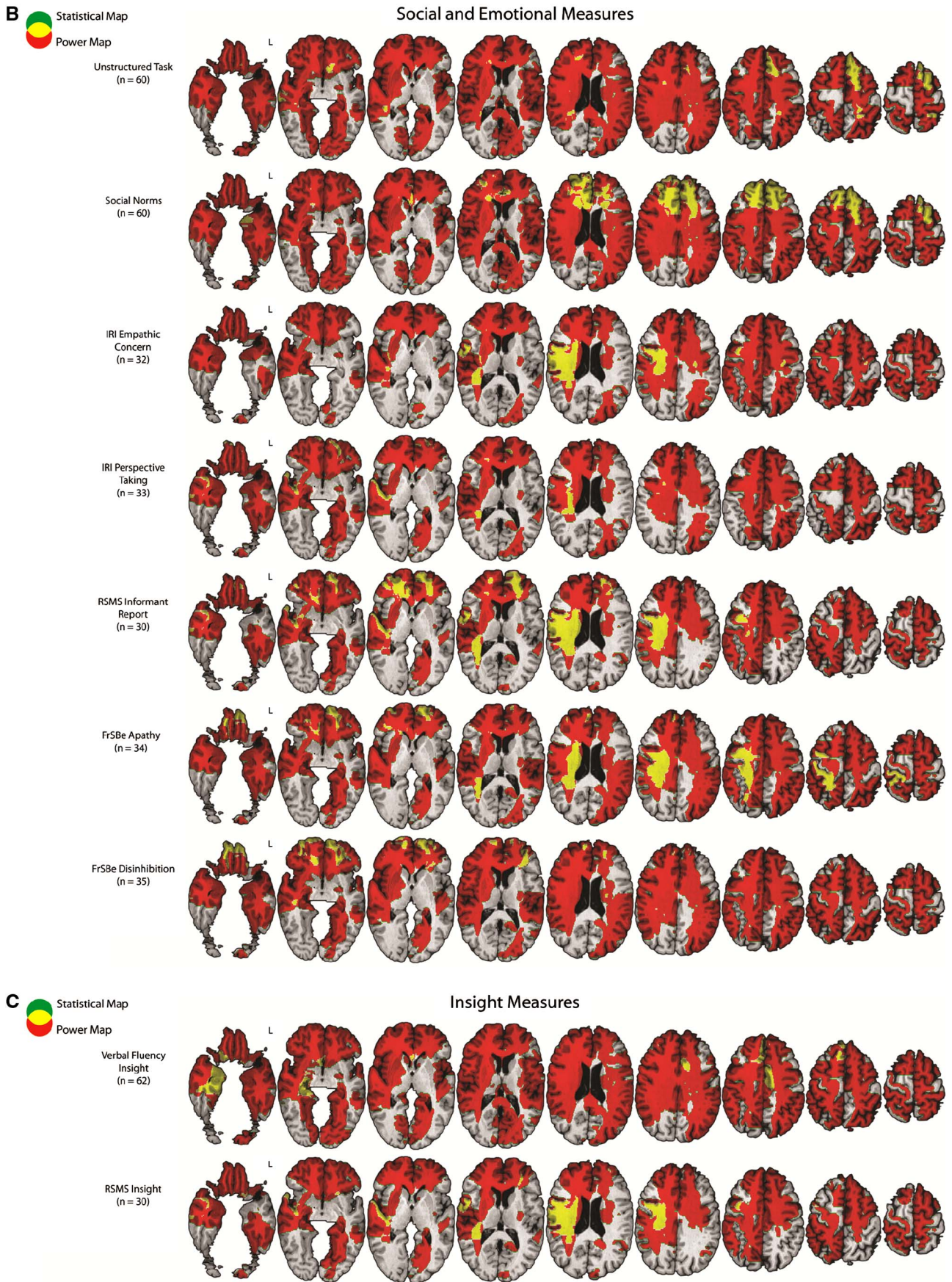


Fig. 1. Continued

associated with damage to the bilateral dlPFC, bilateral superior mesial frontal region, right supramarginal gyrus, and right superior and middle temporal gyri. The FrSBe executive dysfunction score was predominately associated with right-hemisphere lesions in gray matter and underlying white matter of the dorsolateral cortex, anterior temporal lobe, and superior parietal lobule.

## Social/Emotional Measures

VLSM results for the social/emotional measures are displayed in Figure 2B. The Unstructured Task was predominately associated with left-hemisphere lesions, including damage to the left vmPFC, left superior frontal gyrus, and left superior parietal lobule. Lower scores on the EXAMINER Social Norms Questionnaire were associated with bilateral superior frontal cortex damage and mesial temporal lobe damage. Emotional empathy (IRI-Empathic Concern) was predominately associated with right hemisphere damage (including dorsolateral regions and underlying white matter and the cingulate) and small areas of the bilateral orbitofrontal damage. Cognitive empathy (IRI-Perspective Taking) was most strongly associated with bilateral anterior temporal lobe damage, bilateral vmPFC and orbitofrontal damage, and damage to white matter underlying the right inferior parietal lobule. Poor self-monitoring

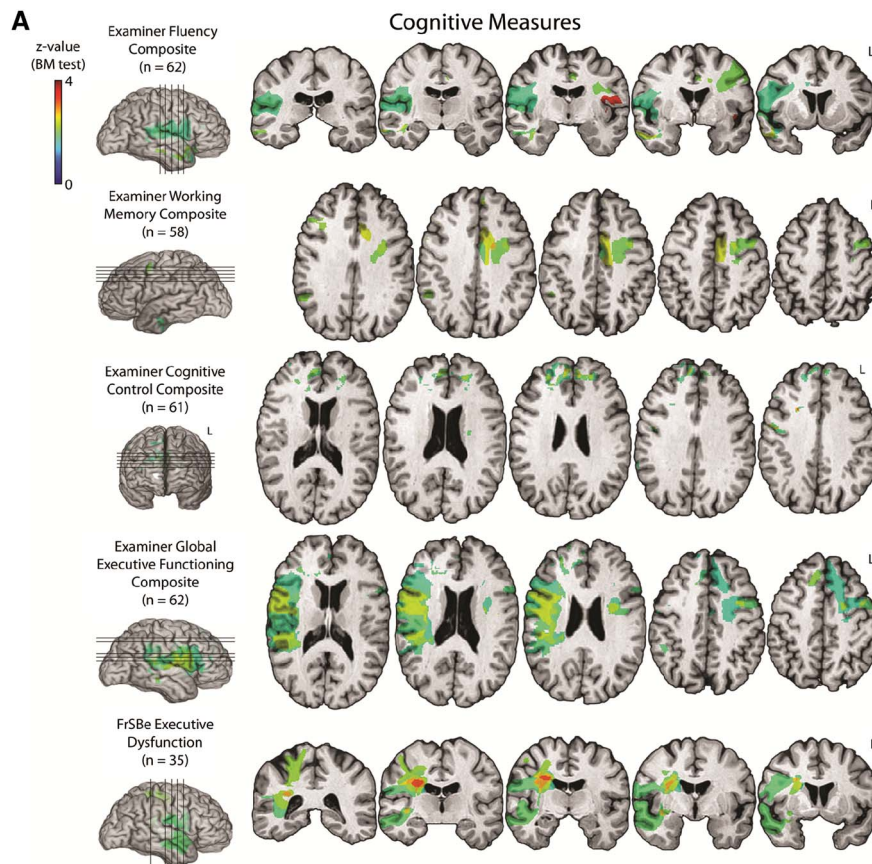
(Revised Self-Monitoring Scale) was associated with damage to the bilateral vmPFC/orbitofrontal region, right dlPFC, and right anterior temporal lobe. The FrSBe apathy score was associated with bilateral vmPFC/orbitofrontal damage and right dlPFC and superior parietal lobule damage. The FrSBE disinhibition score was associated with bilateral vmPFC/orbitofrontal damage, as well as right anterior temporal lobe damage.

## Insight Measures

VLSM results for the insight measures are displayed in Figure 2C. Overestimation of cognitive performance on verbal fluency measures was significantly associated with damage to the right parahippocampal gyrus and inferotemporal region, as well as bilateral areas of the orbitofrontal cortex and superior mesial frontal region. Overestimation of self-monitoring abilities was associated with left vmPFC/orbitofrontal damage and right insula, dorsolateral cortex, and anterior temporal lobe damage.

## DISCUSSION

Results from the VLSM analyses of the EXAMINER cognitive measures, which generally showed a relationship between dorsolateral prefrontal damage and lower test performance,



**Fig. 2.** Results of the VLSM for the various measures included in this study are displayed on a template brain according to standard radiological convention (left hemisphere on the right). Statistical significance ( $p < .05$ ) was determined by the Brunner-Munzel test. Significant findings are identified by colors corresponding to the Z-score bar to the right of each score. (A) Cognitive Measures. (B) Social/Emotional Measures. (C) Insight Measures.

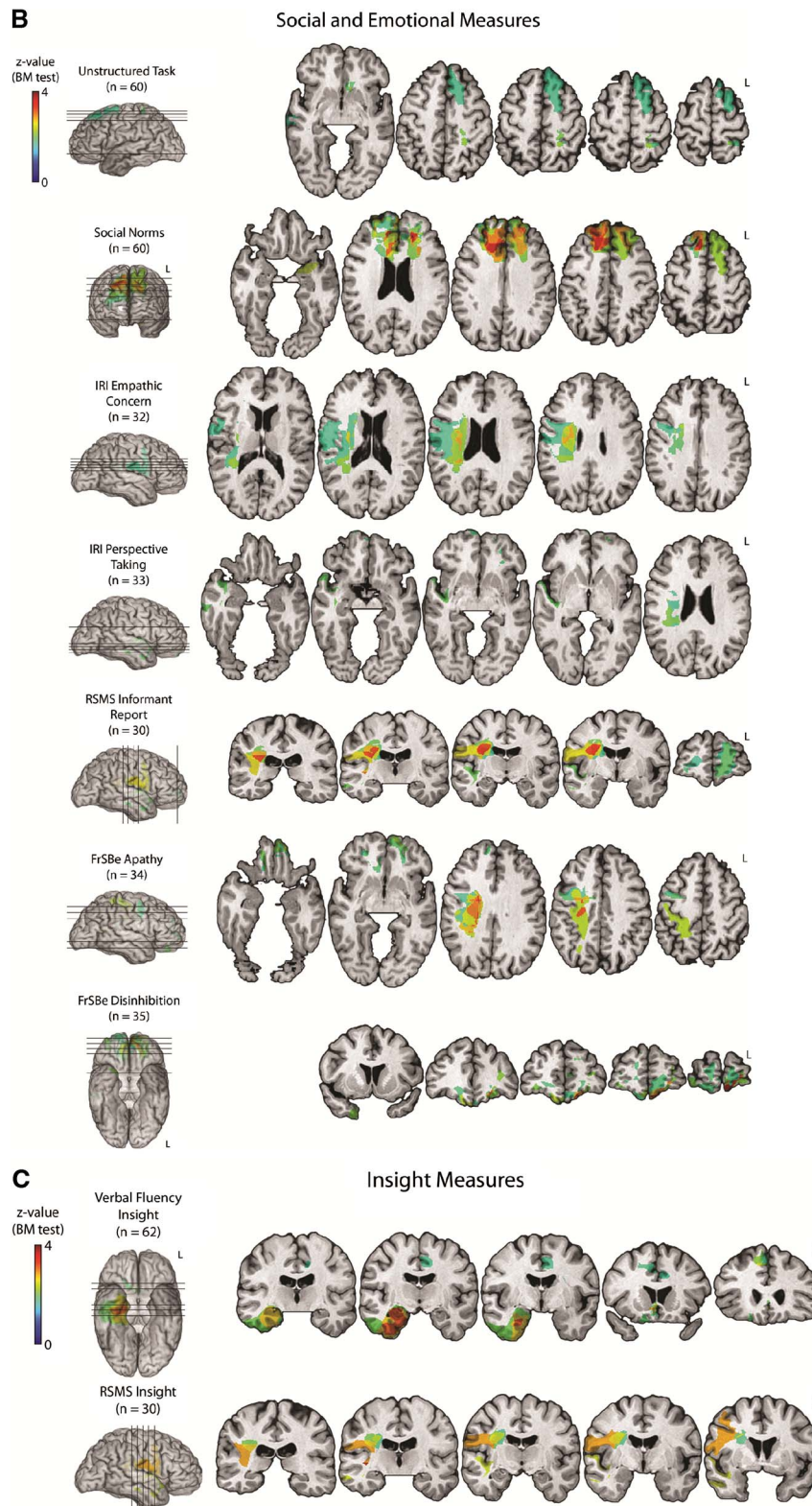


Fig. 2. Continued

were largely consistent with our hypothesis, and they provide an important replication of the findings reported by Gläscher et al. (2012) regarding the relationship between cognitive measures of executive functioning and both dlPFC and

anterior cingulate damage. There are some differences in the results of the two studies regarding cognitive measures, which appear to be largely due to differences in methodology. For example, Gläscher et al. (2012) used a measure of



letter fluency while the current study used a composite measure of both letter and category fluency. Given that previous research has shown that lesions in the right dlPFC are significantly associated with impairments in semantic fluency, but not letter fluency (Stuss et al., 1998), the inclusion of semantic fluency may explain why our findings for verbal fluency differed somewhat from those reported by Gläscher et al. (2012). The current study is also consistent with another recent lesion study that showed a relationship between executive functioning and the dorsolateral prefrontal regions (Barbey, Colom, & Grafman, 2012).

Of interest, an informant report measure of primarily cognitive aspects of executive functioning (FrSBe Executive Dysfunction) overlapped with the EXAMINER cognitive measures in its relationship to damage in regions such as the dlPFC. Previous studies showing significant correlations between the FrSBe Executive Dysfunction subscale and traditional clinical measures of executive functioning have suggested both types of measures relate to shared neural substrates (e.g., Chiaravalloti & DeLuca, 2003). The current study supports this idea.

The Unstructured Task, a measure that involves both planning and value-based decision-making, was most strongly associated with damage in the vmPFC. This test is a modification of the Six-Element Test (Shallice & Burgess, 1991), previously shown to be sensitive to vmPFC damage (Levine et al., 1998). The current study provides additional evidence for the conclusion made by Gläscher et al. (2012) that the vmPFC is critical for value-based decision-making. Another important finding was that damage to the vmPFC was *not* associated with impairments in off-line, verbally based social knowledge and reasoning (the Social Norms Questionnaire), which is consistent with previous studies (e.g., Beer et al., 2006; Saver & Damasio, 1991). Of interest, damage to the superior mesial prefrontal cortex was found to be associated with lower scores on this measure, which could suggest a role for the superior mesial frontal sector in storing declarative types of social knowledge. Previous fMRI studies have suggested that this region plays a role in processing social rule violations (e.g., Berthoz, Armony, Blair, & Dolan, 2002; Fiddick, Spampinato, & Grafman, 2005).

The current study also extends previous findings linking cognitive empathy to the vmPFC (Ames, Jenkins, Banaji, & Mitchell, 2008; Shamay-Tsoory, Aharon-Peretz, & Perry, 2009). In contrast, although emotional empathy has been shown to be related to vmPFC damage in previous studies (e.g., Shamay-Tsoory, Tomer, Goldsher, Berger, & Aharon-Peretz, 2004), such a relationship was not found in the current study. However, outside of the frontal lobe, the predominately right-lateralized results for emotional empathy are consistent with literature showing greater deficits in empathy with right hemisphere lesions (e.g., Shamay-Tsoory, Tomer, Berger, & Aharon-Peretz, 2003). This may be due to impairments in emotion recognition following right hemisphere damage (e.g., Adolphs, Damasio, Tranel, & Damasio, 1996). The relationship found between damage in non-frontal right hemisphere regions and self-monitoring may also be

related to impairments in emotion recognition. In contrast, the relationship between vmPFC damage and self-monitoring may be related to deficits in other aspects of emotional processing (Beer et al., 2006).

Also consistent with previous work (Zamboni et al., 2008), we found a relationship between apathy and both vmPFC and dlPFC damage. It has been suggested that apathy can result from either deficits in planning (i.e., dlPFC-type dysfunction) or deficits in emotional processing (i.e., vmPFC-type dysfunction) (Levy & Dubois, 2006). Our study also found relationships between disinhibition and both the vmPFC and anterior temporal lobe that parallel findings found for disinhibition and atrophy in these regions in patients with frontotemporal dementia (Hornberger et al., 2011). A previous lesion study of the FrSBe showed that the measure could distinguish between frontal and non-frontal brain damage (Grace, Stout, & Malloy, 1999). The current study extends those findings and provides additional evidence in support of the FrSBe as a measure of executive functioning.

Informants of vmPFC patients have frequently described them as lacking insight into the cognitive and behavior changes they have experienced as a result of brain damage (e.g., Barrash et al., 2000). The current study provides additional evidence to support that idea. Both poor cognitive insight (i.e., an overestimation of verbal fluency performance) and poor behavioral insight (i.e., an overestimation of self-monitoring abilities) were associated with vmPFC damage. A lack of behavioral insight was also related to damage in the right insula, a region that has been linked to self-awareness (Craig, 2011; but see Damasio, Damasio, & Tranel, 2013, and Philippi, Felin, et al., 2012, for other perspectives on this issue).

Although the sample size used in this study is comparable to that of many other published VLSM analyses (e.g., Arévalo, Baldo, & Dronkers, 2012; Saygin, 2007), the distribution of lesions was such that the majority of patients had damage to the PFC. This was done intentionally, so as to increase power to detect significant relationships between PFC damage and executive functioning. Also, to maximize our ability to detect relationships throughout the brain, all lesioned voxels were analyzed. We chose this approach to maximize the utility of our data, given the rarity of well-studied neurological patients with focal brain lesions. As a result of this approach, while findings in the PFC are based on multiple patients with damage in that region, significant findings in regions outside of the PFC may be based on damage that occurred in only one or two patients. Therefore, we wish to highlight the need to replicate our findings regarding non-PFC regions in other studies with larger samples. Nonetheless, most of our results have a convincing parallel with previous work, and make good sense in the context of what is generally known about the functions of the frontal lobes (e.g., Lezak et al., 2012).

Two additional limitations of our study should be noted. First, due to our sample size, we were unable to examine the effects of individual differences such as gender on our results. Second, while the cognitive components of executive functioning was measured with multiple test scores organized into

factors, the social/emotional components were measured with one or two individual test scores. A more comprehensive set of social/emotional measures could be used in future studies to shore up the reliability and validity of measuring those constructs.

In summary, in support of neuroanatomical theories of the role of the PFC in executive functioning (Ardila, 2008; Stuss, 2011), the results of our VLSM analyses showed that lesions to the vmPFC were related to impairments in various social and emotional components of executive functioning, whereas lesions to the dlPFC and anterior cingulate were related to impairments in cognitive components of executive functioning. Our results also provide additional evidence for the validity of the EXAMINER as a measure of executive functioning.

## ACKNOWLEDGMENTS

This work was supported by NINDS P50 NS19632 (DT), NINDS HHS99271200623661 (DT), and a grant by the German Ministry of Education and Research (01GQ1006; JG). The authors acknowledge that the information contained within this manuscript and the manuscript itself has never before been published in print or electronically. None of the authors has a conflict of interest. Heather Robinson and Matthew Calamia contributed equally to this work.

## REFERENCES

- Adolphs, R., Damasio, H., Tranel, D., & Damasio, A.R. (1996). Cortical systems for the recognition of emotion in facial expressions. *The Journal of Neuroscience*, *16*(23), 7678–7687.
- Ames, D.L., Jenkins, A.C., Banaji, M.R., & Mitchell, J.P. (2008). Taking another person's perspective increases self-referential neural processing. *Psychological Science*, *19*, 642–644. doi:10.1111/j.1467-9280.2008.02135.x
- Ardila, A. (2008). On the evolutionary origins of executive functions. *Brain and Cognition*, *68*, 92–99. doi:10.1016/j.bandc.2008.03.003
- Arévalo, A.L., Baldo, J.V., & Dronkers, N.F. (2012). What do brain lesions tell us about theories of embodied semantics and the human mirror neuron system? *Cortex*, *48*, 242–254. doi:10.1016/j.cortex.2010.06.001
- Barbey, A.K., Colom, R., & Grafman, J. (2012). Dorsolateral prefrontal contributions to human intelligence. *Neuropsychologia*. [Epub ahead of print]. doi:10.1016/j.neuropsychologia.2012.05.017
- Barrash, J., Asp, E., Markon, K., Manzel, K., Anderson, S.W., & Tranel, D. (2011). Dimensions of personality disturbance after focal brain damage: Investigation with the Iowa Scales of Personality Change. *Journal of Clinical and Experimental Neuropsychology*, *33*, 833–852. doi:10.1080/13803395.2011.561300
- Barrash, J., Tranel, D., & Anderson, S.W. (2000). Acquired personality disturbances associated with bilateral damage to the ventromedial prefrontal region. *Developmental Neuropsychology*, *18*, 355–381. doi:10.1207/S1532694205Barrash
- Bates, E., Wilson, S.M., Saygin, A.P., Dick, F., Sereno, M.I., Knight, R.T., & Dronkers, N.F. (2003). Voxel-based lesion-symptom mapping. *Nature Neuroscience*, *6*, 448–450. doi:10.1038/nm1050
- Bechara, A. (2004). The role of emotion in decision-making: Evidence from neurological patients with orbitofrontal damage. *Brain and Cognition*, *55*, 30–40. doi:10.1016/j.bandc.2003.04.001
- Bechara, A., Damasio, H., & Damasio, A.R. (2000). Emotion, decision making and the orbitofrontal cortex. *Cerebral Cortex*, *10*, 295–307. doi:10.1093/cercor/10.3.295
- Beer, J.S., John, O.P., Scabini, D., & Knight, R.T. (2006). Orbitofrontal cortex and social behavior: Integrating self-monitoring and emotion-cognition interactions. *Journal of Cognitive Neuroscience*, *18*, 871–879. doi:10.1162/jocn.2006.18.6.871
- Berthoz, S., Armony, J.L., Blair, R.J.R., & Dolan, R.J. (2002). An fMRI study of intentional and unintentional (embarrassing) violations of social norms. *Brain*, *125*, 1696–1708. doi:10.1093/brain/awf190
- Brunner, E., & Munzel, U. (2000). The nonparametric Behrens-Fisher problem: Asymptotic theory and a small-sample approximation. *Biometrical Journal*, *42*, 17–25. doi:10.1002/(SICI)1521-4036(200001)42:1<17::AID-BIMJ17>3.0.CO;2-U
- Chiaravalloti, N.D., & DeLuca, J. (2003). Assessing the behavioral consequences of multiple sclerosis: An application of the Frontal Systems Behavior Scale (FrSBe). *Cognitive and Behavioral Neurology*, *16*, 54–67. doi:10.1097/00146965-200303000-00007
- Collette, F., Van der Linden, M., Laureys, S., Delfiore, G., Degueldre, C., Luxen, A., & Salmon, E. (2005). Exploring the unity and diversity of the neural substrates of executive functioning. *Human Brain Mapping*, *25*, 409–423. doi:10.1002/hbm.20118
- Craig, A.D. (2011). Significance of the insula for the evolution of human awareness of feelings from the body. *Annals of the New York Academy of Sciences*, *1225*, 72–82. doi:10.1111/j.1749-6632.2011.05990.x
- Damasio, A.R. (1994). *Descartes' error: Emotion, rationality and the human brain*. New York: Putnam.
- Damasio, A., Damasio, H., & Tranel, D. (2013). Persistence of feelings and sentience after bilateral damage of the insula. *Cerebral Cortex*, *23*, 833–846. doi:10.1093/cercor/bhs077
- Davis, M.H. (1983). Measuring individual differences in empathy: Evidence for a multidimensional approach. *Journal of Personality and Social Psychology; Journal of Personality and Social Psychology*, *44*(1), 113.
- Eslinger, P.J. (1998). Neurological and neuropsychological bases of empathy. *European Neurology*, *39*, 193–199. doi:10.1159/000007933
- Eslinger, P.J., Moore, P., Anderson, C., & Grossman, M. (2011). Social cognition, executive functioning, and neuroimaging correlates of empathic deficits in frontotemporal dementia. *The Journal of Neuropsychiatry and Clinical Neurosciences*, *23*, 74–82. doi:10.1176/appi.neuropsych.23.1.74
- Fiddick, L., Spampinato, M.V., & Grafman, J. (2005). Social contracts and precautions activate different neurological systems: An fMRI investigation of deontic reasoning. *Neuroimage*, *28*, 778–786. doi:10.1016/j.neuroimage.2005.05.033
- Fiez, J.A., Damasio, H., & Grabowski, T.J. (2000). Lesion segmentation and manual warping to a reference brain: Intra- and interobserver reliability. *Human Brain Mapping*, *9*, 192–211. doi:10.1002/(SICI)1097-0193(200004)9:4<192::AID-HBM2>3.0.CO;2-Y
- Frank, R.J., Damasio, H., & Grabowski, T.J. (1997). Brainvox: An interactive, multimodal visualization and analysis system for neuroanatomical imaging. *Neuroimage*, *5*, 13–30. doi:10.1006/nimg.1996.0250
- Friston, K.J., Ashburner, J.T., Kiebel, S.J., Nichols, T.E., & Penny, W.D. (Eds.). (2011). *Statistical parametric mapping: The analysis of functional brain images: The analysis of functional brain images*. New York: Academic Press.

- Gläscher, J., Adolphs, R., Damasio, H., Bechara, A., Rudrauf, D., Calamia, M., ... Tranel, D. (2012). Lesion mapping of cognitive control and value-based decision making in the prefrontal cortex. *Proceedings of the National Academy of Sciences of the United States of America*, *109*, 14681–14686. doi:10.1073/pnas.1206608109
- Grace, J., & Malloy, P. (2001). *FrSBe, frontal systems behavior scale: Professional manual*. Lutz, FL: Psychological Assessment Resources.
- Grace, J., Stout, J.C., & Malloy, P.F. (1999). Assessing frontal lobe behavioral syndromes with the frontal lobe personality scale. *Assessment*, *6*, 269–284. doi:10.1177/107319119900600307
- Hornberger, M., Geng, J., & Hodges, J.R. (2011). Convergent grey and white matter evidence of orbitofrontal cortex changes related to disinhibition in behavioural variant frontotemporal dementia. *Brain*, *134*, 2502–2512. doi:10.1093/brain/awr173
- Kelley, W.M., Macrae, C.N., Wyland, C.L., Caglar, S., Inati, S., & Heatherton, T.F. (2002). Finding the self? An event-related fMRI study. *Journal of Cognitive Neuroscience*, *14*, 785–794. doi:10.1162/08989290260138672
- Koenigs, M., Barbey, A.K., Postle, B.R., & Grafman, J. (2009). Superior parietal cortex is critical for the manipulation of information in working memory. *The Journal of Neuroscience*, *29*, 14980–14986. doi:10.1523/JNEUROSCI.3706-09.2009
- Kramer, J. (2011). *Executive abilities: Measures and instruments for neurobehavioral evaluation and research (EXAMINER)*. Retrieved from: <http://examiner.ucsf.edu/EXAMINER%20User%20Manual.pdf>
- Latzman, R.D., & Markon, K.E. (2010). The factor structure and age-related factorial invariance of the Delis-Kaplan Executive Function System (D-KEFS). *Assessment*, *17*, 172–184. doi:10.1177/1073191109356254
- Lennox, R.D., & Wolfe, R.N. (1984). Revision of the self-monitoring scale. *Journal of Personality and Social Psychology*, *46*, 1349–1364. doi:10.1037/0022-3514.46.6.1349
- Levine, B., Stuss, D.T., Milberg, W.P., Alexander, M.P., Schwartz, M., & Macdonald, R. (1998). The effects of focal and diffuse brain damage on strategy application: Evidence from focal lesions, traumatic brain injury and normal aging. *Journal of the International Neuropsychological Society*, *4*, 247–264.
- Levy, R., & Dubois, B. (2006). Apathy and the functional anatomy of the prefrontal cortex–basal ganglia circuits. *Cerebral Cortex*, *16*, 916–928. doi:10.1093/cercor/bhj043
- Lezak, M.D., Howieson, D.B., Bigler, E.D., & Tranel, D. (2012). *Neuropsychological assessment* (5th ed.). New York: Oxford University Press.
- Li, X., Lu, Z., D'Argembeau, A., Ng, M., & Bechara, A. (2010). The Iowa Gambling Task in fMRI images. *Human Brain Mapping*, *31*(3), 410–423. doi:10.1002/hbm.20875
- Massimo, L., Libon, D.J., Chandrasekaran, K., Dreyfuss, M., McMillan, C.T., Rascovsky, K., ... Grossman, M. (2013). Self-appraisal in behavioural variant frontotemporal degeneration. *Journal of Neurology, Neurosurgery, & Psychiatry*, *84*, 148–153. doi:10.1136/jnnp-2012-303153
- Massimo, L., Powers, C., Moore, P., Vesely, L., Avants, B., Gee, J., ... Grossman, M. (2009). Neuroanatomy of apathy and disinhibition in frontotemporal lobar degeneration. *Dementia and Geriatric Cognitive Disorders*, *27*, 96–104. doi:10.1159/000194658
- Minzenberg, M.J., Laird, A.R., Thelen, S., Carter, C.S., & Glahn, D.C. (2009). Meta-analysis of 41 functional neuroimaging studies of executive function in schizophrenia. *Archives of General Psychiatry*, *66*, 811. doi:10.1001/archgenpsychiatry.2009.91
- Miyake, A., Friedman, N.P., Emerson, M.J., Witzki, A.H., Howerter, A., & Wager, T.D. (2000). The unity and diversity of executive functions and their contributions to complex “frontal lobe” tasks: A latent variable analysis. *Cognitive Psychology*, *41*, 49–100. doi:10.1006/cogp.1999.0734
- Northoff, G., Grimm, S., Boeker, H., Schmidt, C., Bermpohl, F., Heinzl, A., ... Boesiger, P. (2006). Affective judgment and beneficial decision making: Ventromedial prefrontal activity correlates with performance in the Iowa Gambling Task. *Human Brain Mapping*, *27*(7), 572–587. doi:10.1002/hbm.20202
- O'Doherty, J.P. (2004). Reward representations and reward-related learning in the human brain: Insights from neuroimaging. *Current Opinion in Neurobiology*, *14*(6), 769–776. doi:10.1016/j.conb.2004.10.016
- Philippi, C.L., Duff, M.C., Denburg, N.L., Tranel, D., & Rudrauf, D. (2012). Medial PFC damage abolishes the self-reference effect. *Journal of Cognitive Neuroscience*, *24*, 475–481. doi:10.1162/jocn\_a\_00138
- Philippi, C.L., Feinstein, J.S., Khalsa, S.S., Damasio, A., Tranel, D., Landini, G., ... Rudrauf, D. (2012). Preserved self-awareness following extensive bilateral brain damage to the insula, anterior cingulate, and medial prefrontal cortices. *PloS one*, *7*, e38413. doi:10.1371/journal.pone.0038413
- Rorden, C., Karnath, H.O., & Bonilha, L. (2007). Improving lesion-symptom mapping. *Journal of Cognitive Neuroscience*, *19*, 1081–1088. doi:10.1162/jocn.2007.19.7.1081
- Rosen, H.J., Alcantar, O., Rothlind, J., Sturm, V., Kramer, J.H., Weiner, M., & Miller, B.L. (2010). Neuroanatomical correlates of cognitive self-appraisal in neurodegenerative disease. *NeuroImage*, *49*, 3358–3364. doi:10.1016/j.neuroimage.2009.11.041
- Saver, J.L., & Damasio, A.R. (1991). Preserved access and processing of social knowledge in a patient with acquired sociopathy due to ventromedial frontal damage. *Neuropsychologia*, *29*, 1241–1249. doi:10.1016/0028-3932(91)90037-9
- Saygin, A.P. (2007). Superior temporal and premotor brain areas necessary for biological motion perception. *Brain*, *130*, 2452–2461. doi:10.1093/brain/awm162
- Shallice, T., & Burgess, P.W. (1991). Deficits in strategy application following frontal lobe damage in man. *Brain*, *114*, 727–741. doi:10.1093/brain/114.2.727
- Shamay-Tsoory, S.G., Aharon-Peretz, J., & Perry, D. (2009). Two systems for empathy: A double dissociation between emotional and cognitive empathy in inferior frontal gyrus versus ventromedial prefrontal lesions. *Brain*, *132*, 617–627. doi:10.1093/brain/awn279
- Shamay-Tsoory, S.G., Tomer, R., Berger, B., & Aharon-Peretz, J. (2003). Characterization of empathy deficits following prefrontal brain damage: The role of the right ventromedial prefrontal cortex. *Journal of Cognitive Neuroscience*, *15*, 324–337. doi:10.1162/089892903321593063
- Shamay-Tsoory, S.G., Tomer, R., Goldsher, D., Berger, B.D., & Aharon-Peretz, J. (2004). Impairment in cognitive and affective empathy in patients with brain lesions: Anatomical and cognitive correlates. *Journal of Clinical and Experimental Neuropsychology*, *26*, 1113–1127. doi:10.1080/13803390490515531
- Stuss, D.T. (2011). Functions of the frontal lobes: Relation to executive functions. *Journal of the International Neuropsychological Society*, *17*, 759–765. doi:10.1017/S1355617711000695
- Stuss, D.T., Alexander, M.P., Hamer, L., Palumbo, C., Dempster, R., Binns, M., ... Izukawa, D. (1998). The effects of focal anterior and posterior brain lesions on verbal fluency. *Journal of the International Neuropsychological Society*, *4*(3), 265–278.

- Stuss, D.T., & Knight, R.T. (Eds.). (2002). *Principles of frontal lobe function*. New York: Oxford University Press.
- Stuss, D., & Levine, B. (2002). Adult clinical neuropsychology: Lessons from studies of the frontal lobes. *Annual Review of Psychology*, *53*, 401–433. doi:10.1146/annurev.psych.53.100901.135220
- Tranel, D., Anderson, S.W., & Benton, A.L. (1994). Development of the concept of “executive function” and its relationship to the frontal lobes. In F. Boller & J. Grafman (Eds.), *Handbook of neuropsychology* (Vol. 9, pp. 125–148). Amsterdam: Elsevier.
- Tsujimoto, M., Senda, J., Ishihara, T., Niimi, Y., Kawai, Y., Atsuta, N., ... Sobue, G. (2011). Behavioral changes in early ALS correlate with voxel-based morphometry and diffusion tensor imaging. *Journal of the Neurological Sciences*, *307*, 34–40. doi:10.1016/j.jns.2011.05.025
- Van Breukelen, G.J.P., & Vlaeyen, J.W.S. (2005). Norming clinical questionnaires with multiple regression: The pain cognition list. *Psychological Assessment*, *17*, 336. doi:10.1037/1040-3590.17.3.336
- Wallis, J.D. (2007). Orbitofrontal cortex and its contribution to decision-making. *Annual Review of Neuroscience*, *30*(1), 31–56. doi:10.1146/annurev.neuro.30.051606.094334
- Zamboni, G., Huey, E., Krueger, F., Nichelli, P., & Grafman, J. (2008). Apathy and disinhibition in frontotemporal dementia: Insights into their neural correlates. *Neurology*, *71*, 736–742. doi:10.1212/01.wnl.0000324920.96835.95