

Ice formation within a thin film flowing over a flat plate

M. R. Moore^{1,2,†}, M. S. Mughal¹ and D. T. Papageorgiou¹

¹Department of Mathematics, Imperial College London, South Kensington Campus, London SW7 2AZ, UK

²Mathematical Institute, University of Oxford, Radcliffe Observatory Quarter, Woodstock Road, Oxford OX2 6GG, UK

(Received 23 August 2016; revised 9 February 2017; accepted 10 February 2017;
first published online 22 March 2017)

We present a model for ice formation in a thin, viscous liquid film driven by a Blasius boundary layer after heating is switched off along part of the flat plate. The flow is assumed to initially be in the Nelson *et al.* (*J. Fluid Mech.*, vol. 284, 1995, pp. 159–169) steady-state configuration with a constant flux of liquid supplied at the tip of the plate, so that the film thickness grows like $x^{1/4}$ in distance along the plate. Plate cooling is applied downstream of a point, Lx_0 , an $O(L)$ -distance from the tip of the plate, where L is much larger than the film thickness. The cooling is assumed to be slow enough that the flow is quasi-steady. We present a thorough asymptotic derivation of the governing equations from the incompressible Navier–Stokes equations in each fluid and the corresponding Stefan problem for ice growth. The problem breaks down into two temporal regimes corresponding to the relative size of the temperature difference across the ice, which are analysed in detail asymptotically and numerically. In each regime, two distinct spatial regions arise, an outer region of the length scale of the plate, and an inner region close to x_0 in which the film and air are driven over the growing ice layer. Moreover, in the early time regime, there is an additional intermediate region in which the air–water interface propagates a slope discontinuity downstream due to the sudden onset of the ice at the switch-off point. For each regime, we present ice profiles and growth rates, and show that for large times, the film is predicted to rupture in the outer region when the slope discontinuity becomes sufficiently enhanced.

Key words: aerodynamics, boundary layers, icing

1. Introduction

When an aircraft flies through clouds at an ambient temperature close to or below freezing, supercooled water droplets can accrete on elements of the aircraft, forming ice. The growth of ice is of significant industrial and commercial importance due to its detrimental effect on the aerodynamics, through increasing drag and loss of lift. Such changes can reduce fuel efficiency and, in the worst possible cases, cause serious accidents.

† Email address for correspondence: moorem@maths.ox.ac.uk

Engine intakes and wings are particularly affected by ice accretion. Correspondingly, these areas are often protected by anti-icing or de-icing systems. These vary from using the hot bleed from the engine to heat components, to electro-thermal elements embedded below the component surfaces, to actuators that dislodge ice off the aircraft. Ice protection measures can be run continuously to prevent icing altogether (anti-icing), or intermittently to remove ice that forms periodically (de-icing). In the latter case, it is naturally of significant interest to understand how quickly ice forms, how much ice forms between de-icing events and what the influence on the aerodynamics is between events. However, even in anti-icing regimes, the resulting liquid films can flow aft and form runback ice on unprotected areas of the aircraft.

There are two main types of ice formation in flight conditions. When the ambient air is cold, the airspeed is low and the liquid water content of the clouds is low, the supercooled droplets typically freeze completely on contact with the aircraft. The resulting ice is called rime and is typically white and opaque. When the air temperature is closer to freezing, the speed is higher or the liquid water content of the air is larger, the droplets do not completely freeze: ice and liquid co-exist. In this case, ice tends to be paler and translucent and is known as glaze icing. Unsurprisingly, glaze icing is most associated with the runback of liquid causing ice 'horns' or 'beaks' to form aft of the droplet impact region.

Naturally, the processes involved in ice accretion and its removal or prevention are very complicated, and have therefore been of interest to a plethora of researchers. Gent, Dart & Cansdale (2000) give a comprehensive review of the field, concentrating in particular on the physical processes involved in ice accretion, the trajectory of water droplets and the collection efficiency of components of various aircraft. A number of factors can influence the amount of water that is 'caught' by the aircraft, including angle of attack, incoming airspeed, liquid water content of the air and ambient temperature. Lynch & Khodadoust (2001) give a review of various forms of ice accretion and the resulting degradation on the aerodynamics of an aircraft: namely loss of lift, an increase in drag and a decrease in stall angle. A discussion of various anti-icing and de-icing techniques can be found in Thomas, Cassoni & MacArthur (1996).

The classical model used to predict ice accretion is the Messinger (1953) model. This model is a one-dimensional surface energy balance accounting for effects such as aerodynamic heating, the release of latent heat in freezing, kinetic heating of droplet impacts, evaporation and the sensible heat needed to increase the droplets to the freezing temperature. The resulting balance returns a fraction representing the amount of fluid that freezes. If this fraction is larger than 1, then the model predicts rime icing conditions, while a value between 0 and 1 indicates glaze conditions.

Myers & Hammond (1999) and Myers (2001) improve upon the Messinger model by proposing a one-dimensional Stefan problem formulation of ice growth on a flat substrate. They specify a subfreezing temperature on an initially dry plate, with ice growth occurring in two stages. In the first stage, the incoming droplets freeze completely on impact until, at a specific time, the ice layer is sufficiently thick to act as an insulator, allowing a water film to persist on top of the ice.

Myers, Charpin & Thompson (2002*b*) incorporate the water flow as part of their model of a thin film of fluid on a cold plane sustained by an influx of droplets. The air dynamics is not considered, with the role of the air limited to the influx of droplets and a shear applied on the film surface. Assuming the film is thin and that conduction is the dominant method of heat transfer, Myers *et al.* (2002*b*) reduce the model to two coupled equations for the free surface of the film and the ice thickness, which are

solved numerically. Myers, Charpin & Chapman (2002a) present an equivalent model for arbitrary three-dimensional bodies, which Myers & Charpin (2004) then apply to a realistic airfoil shape. More recently, Mitchell & Myers (2008) and Mitchell & Myers (2012) have used heat balance integral methods to tackle similar Stefan problems, including de-icing scenarios.

At a more local scale, there are several recent studies on the freezing of a supercooled droplet as it impacts a substrate: see, for example, Quero *et al.* (2006) for numerical simulations of droplet impact; Vargas (2007) for a simple ballistic model for several droplet impacts and comparisons to experimental pictures; Jung *et al.* (2012) who consider the freezing front in a droplet placed on a cold plate; and Elliott & Smith (2017) for droplet freezing in the context of classical impact theory.

Rothmayer (2003b) presents an in-depth scaling analysis for supercooled droplet collection near the stagnation point of an airfoil. The analysis not only predicts the collection efficiency of the airfoil, but also thin film and ice formation in the boundary layer as accretion occurs. The Mach number is small, so the flow is effectively incompressible and the thickness of the film and ice layers are found in terms of the liquid water content of the air, the air–water density ratio, the Reynolds number of the flow and the Mach number. The analysis is extended by Rothmayer (2006) and Otta & Rothmayer (2009), who use a multiple time scale analysis to investigate the stability of the ice and film on an airfoil nose. Otta & Rothmayer (2007) use the model of Rothmayer (2003b) to develop a model for icing in transonic and subsonic boundary layer flows. Ice and film profiles are derived for a given liquid collection efficiency and compared to numerical simulations, with good agreement found for rime icing conditions.

In this paper, we will be concentrating on predicting ice growth in liquid films within an aerodynamic boundary layer. In particular, we will study ice growth in an established liquid film after freezing is initiated downstream, perhaps modelling the switch-off of a heating element between de-icing events or the malfunction of an anti-icing system. Of especial relevance to our analysis is Nelson, Alving & Joseph (1995), which considers a thin film situated well within a Blasius boundary layer. The film is fed by a constant flux at the tip of a flat plate and is driven by the Blasius shear in the air. Sufficiently far away from the tip of the plate, Nelson *et al.* (1995) show that the resulting film approaches a steady, linear velocity profile and its thickness grows like the 1/4-power in distance along the plate, while the air is unaffected by the film at leading order.

Timoshin (1997) looks at the stability of this solution when the film thickness is the same as the classical lower deck in triple-deck theory, see Neiland (1969), Stewartson & Williams (1969) and Messiter (1970). Timoshin derives the nonlinear viscous–inviscid interaction model and investigates the growth of Tollmien–Schlichting and interfacial instabilities when the system is exposed to small perturbations for a wide range of fluid parameters. A similar triple-deck stability analysis of a thin film on an airfoil is given in Tsao, Rothmayer & Ruban (1997). Like Timoshin (1997), Tsao *et al.* (1997) find that the film has a destabilising effect on Tollmien–Schlichting waves, so that for very large values of the Reynolds number, the unstable Tollmien–Schlichting mode has comparable growth rate to the interfacial mode. Rothmayer & Tsao (2000) look at the propagation of interfacial waves for a film within an aerodynamic boundary layer in icing conditions, in particular considering when waves are driven by air shear and when they are driven by air pressure.

Smyrniaos, Pelekasis & Tsamopoulos (2000) and Pelekasis & Tsamopoulos (2001) adapt the Nelson *et al.* (1995) model to include rainfall, or equivalently, the collection

of drops by the liquid film in the conservation of mass condition on the film surface. In steady state, Smyrniotis *et al.* (2000) show that the film thickness grows proportional to the $3/4$ -power in distance from the leading edge of the flat plate, as opposed to the $1/4$ -power found by Nelson *et al.* (1995). Moreover for a NACA-008 airfoil profile the film thickness is shown to blow up at a finite distance from the airfoil nose provided that the rainfall rate is sufficiently large, indicating that flow separation may take place. Pelekasis & Tsamopoulos (2001) concentrate on the stability of the flat-plate model, investigating the role of gravity and inertia in the growth of Tollmien–Schlichting and interfacial waves.

There are several existing studies in the literature which look at ice formation in thin films within aerodynamic conditions. They differ from what we attempt here since they consider ice and film formation simultaneously, generally initiated through a collection of supercooled droplets on the substrate, which encompasses both rime and glaze icing conditions. In our analysis we will consider ice growth in the Nelson *et al.* (1995) steady-state film after heating is lost on part of the plate. We will briefly review the existing literature before expanding on what our model does differently and what we hope to achieve by considering it.

Tsao & Rothmayer (2002) adapt the triple-deck model of Tsao *et al.* (1997) for icing conditions. By solving a coupled ice–film–air system numerically, they show that a classical boundary layer formulation cannot predict the waves and ice roughness formation seen in experimental icing conditions. Therefore, they conclude that flow instabilities are triggered by localised structures and switch to the triple-deck regime. The resulting model predicts not only the interfacial and Tollmien–Schlichting instabilities seen in the pure water case, but also ice modes that propagate upstream and may eventually cause the film to rupture, forming dry patches and water beads. These beads are often seen in icing experiments, see for example Olsen & Walker (1987) and Hansman *et al.* (1991). Rothmayer (2003a) also considers the formation of ice surface roughness due to surface instabilities and, in particular, finds that for several film thicknesses that fall in regimes applicable to aircraft icing, three-dimensional modes of instability are comparable to two-dimensional modes.

Shapiro & Timoshin (2006) and Shapiro & Timoshin (2007) also consider the freezing of thin films on substrates, although their analysis is primarily focused on instabilities driven by gravity. They also find ice modes that propagate upstream and suggest that, provided that the time scale for ice growth is longer than the time scale associated with the film flow, this upstream propagation can be explained by considering the imbalance in heat flux when the ice surface is perturbed by a small amount. Ueno & Farzaneh (2011) consider the Nelson *et al.* (1995) steady-state film with the plate replaced by a large ice region. They find the undisturbed solution, which is then perturbed and the growth of free surface and ice instabilities are investigated. Like Tsao & Rothmayer (2002), the ice modes propagate upstream. Furthermore, Ueno & Farzaneh (2011) show that the heat transfer coefficient at the air–water interface is strongly affected by disturbances to the air shear stress.

In this paper, we take a different approach to the icing models in aerodynamic conditions discussed above, by considering the response of an existing, heated film on a flat plate after the temperature along part of the plate is reduced and phase change occurs. In particular, we consider the Nelson *et al.* (1995) steady-state flow in the absence of icing and ‘switch-off’ the heating at a point downstream of the leading edge of the plate. Although the model possibly represents a somewhat artificial situation, it is a useful benchmark for highlighting the important processes in the resulting icing. Our main aim is to deduce the ice shape and to discern the response

of the liquid film on the ice growth time scale, showing that it will rupture in a finite time.

Our configuration bears similarities to Higuera (1991), who considers a similar problem with an infinite pool of fluid moving past a flat plate. Since the fluid bath is infinite, he is able to find a steady-state solution to the problem and investigate the effect of the ice growth on the fluid flow. When the ice is sufficiently large, in particular as large as the classical lower deck, flow separation is shown to occur just in front of the leading edge of the ice. We will adapt some of the methodology to our model, although since the film is very thin – as opposed to the infinite bath of fluid in Higuera (1991) – there cannot be a steady-state solution, as the freezing induces the film to rupture in finite time.

After introducing the dimensionless model in §2, we review the steady-state flow of Nelson *et al.* (1995) in §3, and give more details about the corresponding thermal problem. We then discuss the early time ice growth and show how the problem breaks down into three distinct asymptotic regions in §4. The large-time solution is presented in §5, and the limitations and possible extensions for the model are discussed in §6.

2. Problem configuration

Our analysis aims to model various scenarios in which loss of heating on a solid surface causes a thin film of fluid within an aerodynamic boundary layer to freeze. We shall restrict our analysis to two-dimensional flat-plate flow, which to leading order is applicable to bodies with suitably small curvature.

Consider a semi-infinite flat plate lying on the positive x^* -axis in a Cartesian (x^*, y^*) -plane, where here and hereafter an asterisk indicates a dimensional variable. The free stream of speed U_∞ is parallel to the plate. The air drives a shear flow in a thin film of liquid attached to the plate. Before the heating switches off, the plate is kept at a constant temperature T_w , which is greater than the freezing temperature, T_f . The external air stream has temperature T_∞ , which can vary from temperatures below freezing, simulating high-level clouds involved in aircraft icing, to the surface temperature T_w . We note that, in practice, it is somewhat difficult to maintain a plate – or indeed, an aircraft component – at a fixed temperature, which is a limitation to our modelling assumptions.

At time $t^* = 0$, the heating along part of the plate is turned off, continuously decreasing the temperature until eventually ice forms as the film freezes. Let Lx_0 where $x_0 = O(1)$ be a typical distance along the plate at which the heating is switched off and let ℓ_w, ℓ_i represent typical film and ice thicknesses respectively. The configuration is summarised in figure 1.

We denote the air and film viscosity and density by μ_j and ρ_j , where the subscript $j = a, w$ respectively, while the density of ice is represented by ρ_i . The interfacial tension between the air and liquid is denoted by σ . The specific heat at constant pressure and the thermal conductivity of each fluid and the ice are denoted by c_j and λ_j , $j = a, w, i$. The effects of gravity and viscous dissipation in the two fluids are neglected (i.e. the Froude and Eckert numbers are small), although the analysis can be readily extended to incorporate these effects.

The air velocity, pressure and temperature are denoted by $\mathbf{u}^* = (u^*, v^*)$, p^* and θ^* respectively, with the corresponding variables in the film denoted by the upper case counterparts. The ice temperature is denoted by Q^* . The air–water free surface is denoted by H^* , while the ice thickness is denoted by h^* .

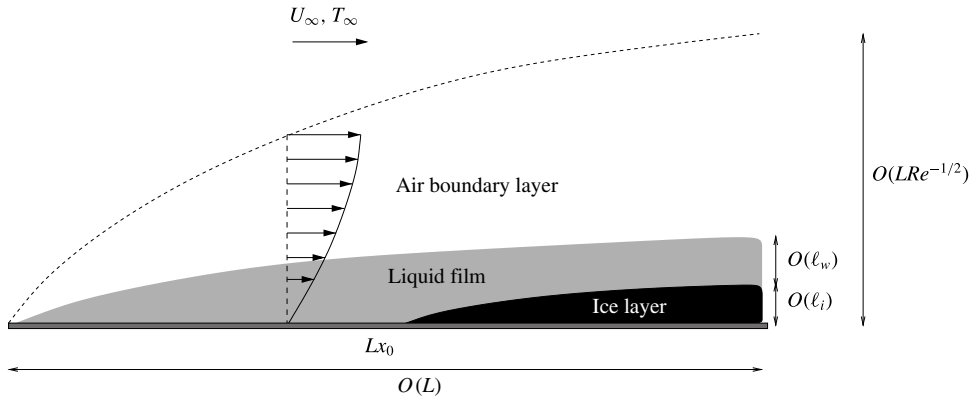


FIGURE 1. Problem configuration after switch-off: an ice layer forms on the plate for $x^* > Lx_0$. The air Reynolds number is defined by $Re = \rho_a LU_\infty / \mu_a$, where ρ_a, μ_a are the density and viscosity of air respectively.

2.1. Non-dimensionalisation

For the sake of brevity, we present the model directly in dimensionless form and use the following scales:

$$\left. \begin{aligned} \mathbf{x}^* &= L\mathbf{x}, & (H^*, h^*) &= L(H, h), & (\mathbf{u}^*, \mathbf{U}^*) &= U_\infty(\mathbf{u}, \mathbf{U}), \\ (p^*, P^*) &= \rho_a U_\infty^2(p, P), & (\theta^*, \Theta^*, Q^*) &= T_f - (T_\infty - T_f)(\theta, \Theta, Q). \end{aligned} \right\} \quad (2.1)$$

We may take $T_f > T_\infty$ without loss of generality and the above temperature scaling is purely for analytical convenience, since it fixes the film and ice temperatures on the ice surface at zero.

The above rescaling thus introduces the following dimensionless numbers into the model:

$$Re = \frac{\rho_a LU_\infty}{\mu_a}, \quad We = \frac{\rho_a LU_\infty^2}{\sigma}, \quad Pr = \frac{\mu_a c_a}{\lambda_a}, \quad Pe_i = \frac{\rho_i c_i LU_\infty}{\lambda_i}, \quad Ste = \frac{c_i(T_f - T_\infty)}{\mathcal{L}}, \quad (2.2a-e)$$

which are the air Reynolds, Weber and Prandtl numbers, the Péclet number in the ice and the Stefan number respectively; \mathcal{L} denoting the latent heat of ice–water phase change. Furthermore, the air–water density, viscosity, thermal conductivity and specific heat ratios, and the water–ice density and thermal conductivity ratios are defined by

$$\rho = \frac{\rho_a}{\rho_w}, \quad \mu = \frac{\mu_a}{\mu_w}, \quad \lambda = \frac{\lambda_a}{\lambda_w}, \quad c = \frac{c_a}{c_w}, \quad \hat{\rho} = \frac{\rho_i}{\rho_w}, \quad \hat{\lambda} = \frac{\lambda_i}{\lambda_w}. \quad (2.3a-f)$$

In the course of this analysis, $\hat{\rho}, \hat{\lambda}, c$ and Pr are assumed $O(1)$, which is reasonable for air–water–ice systems – for example, when $T_f - T_\infty \approx 10$ K, $\hat{\rho} = 0.9, \hat{\lambda} = 4.11, c = 0.24, Pr = 0.69$ (cf. table 1 in § 6.1). However, we shall also assume that ρ, μ and λ are $O(1)$, which are less reasonable assumptions for air–water–ice systems, although the assumption is not uncommon in the literature and it does not greatly affect the asymptotic structure, as discussed in § 6.1. Note that when $T_f - T_\infty \approx 10$ K, $\rho/\mu \approx 0.26$, so that $Re = 0.26Re_w$, where $Re_w = \rho_w LU_\infty / \mu_w$ is the Reynolds number in the liquid, so that throughout the analysis, we shall replace Re_w by $\mu Re / \rho$ where it would appear, and we assume that $Re_w = O(Re)$.

Finally, we shall assume that the fluid properties are independent of the fluid temperature throughout the analysis, which decouples the flow and thermal problems in each phase. In general, this assumption would need to be checked carefully, since in an aircraft icing scenario, there can be a wide range of temperatures, from subzero external air flow to heating elements fed by excess bleed heat from the engines, which can be very high.

2.2. Dimensionless problem

The Navier–Stokes equations in each fluid are given by

$$u_t + uu_x + vv_y = -p_x + \frac{1}{Re}(u_{xx} + u_{yy}), \quad (2.4)$$

$$v_t + uv_x + vv_y = -p_y + \frac{1}{Re}(v_{xx} + v_{yy}), \quad (2.5)$$

$$u_x + v_y = 0, \quad (2.6)$$

$$U_t + UU_x + VU_y = -\rho P_x + \frac{\rho}{\mu Re}(U_{xx} + U_{yy}), \quad (2.7)$$

$$V_t + UV_x + VU_y = -\rho P_y + \frac{\rho}{\mu Re}(V_{xx} + V_{yy}), \quad (2.8)$$

$$U_x + V_y = 0. \quad (2.9)$$

On the plate, the no-slip, no-flux boundary conditions are given by

$$U = 0, \quad V = 0 \quad \text{on } y = 0, \quad (2.10a,b)$$

while on the ice, the no-slip, no-flux conditions are

$$(U, V)^T = (1 - \hat{\rho})h_t \mathbf{n} \quad \text{on } y = h, \quad (2.11)$$

where $\mathbf{n} = (-h_x, 1)^T / (1 + h_x^2)^{1/2}$ is the outward unit normal to the ice surface. On the air–water interface, continuity of velocity and the kinematic condition must be satisfied, so that

$$u = U, \quad v = V \quad \text{on } y = H, \quad (2.12a,b)$$

$$V = H_t + UH_x \quad \text{on } y = H. \quad (2.13)$$

Moreover, continuity of normal and tangential stress on the interface give

$$p = P + \frac{H_{xx}}{We(1 + H_x^2)^{3/2}} + \frac{2}{Re(1 + H_x^2)} \left[H_x^2 \left(u_x - \frac{U_x}{\mu} \right) + v_y - \frac{V_y}{\mu} - H_x \left(u_y + v_x - \frac{(U_y + V_x)}{\mu} \right) \right] \quad \text{on } y = H, \quad (2.14)$$

and

$$\mu[2H_x(u_x - v_y) + (H_x^2 - 1)(u_y + v_x)] = 2H_x(U_x - V_y) + (H_x^2 - 1)(U_y + V_x) \quad (2.15)$$

on $y = H$. These are supplemented with the far-field conditions

$$u \rightarrow 1, \quad p \rightarrow 0 \quad \text{as } x^2 + y^2 \rightarrow \infty. \quad (2.16a,b)$$

Similarly, the energy equations in each fluid and the heat equation in the ice are given by

$$\theta_t + u\theta_x + v\theta_y = \frac{1}{PrRe}(\theta_{xx} + \theta_{yy}), \quad (2.17)$$

$$\Theta_t + U\Theta_x + V\Theta_y = \frac{\rho c}{\lambda PrRe}(\Theta_{xx} + \Theta_{yy}), \quad (2.18)$$

$$Q_t = \frac{1}{Pe_i}(Q_{xx} + Q_{yy}), \quad (2.19)$$

respectively. We discuss the plate temperature profile, $T_{wall}(x, t)$, in §2.3, but will give the appropriate boundary conditions on the non-iced and iced regions here. On the non-iced part of the plate, the film temperature must satisfy

$$\Theta = T_{wall}(x, t), \quad (2.20)$$

while on the iced part of the plate, we naturally have

$$Q = T_{wall}(x, t). \quad (2.21)$$

Continuity of temperature and continuity of heat flux across the free surface of the film are given by

$$\theta = \Theta, \quad \lambda(\theta_y - H_x\theta_x) = \Theta_y - H_x\Theta_x \quad \text{on } y = H. \quad (2.22a,b)$$

On the ice surface, we must have

$$\Theta(x, h, t) = Q(x, h, t) = 0, \quad (2.23)$$

while the Stefan condition is given by

$$\frac{Pe_i}{Ste}h_t = Q_y - h_xQ_x - \frac{1}{\lambda}(\Theta_y - h_x\Theta_x) \quad \text{on } y = h. \quad (2.24)$$

Finally, the far-field condition is

$$\theta \rightarrow -1 \quad \text{as } x^2 + y^2 \rightarrow \infty. \quad (2.25)$$

2.3. The plate temperature condition

At time $t=0^-$ the plate is held at a constant temperature $\beta = (T_w - T_f)/(T_f - T_\infty) > 0$, at which point the plate heating is switched off for $x > x_0$, where $x_0 = O(1)$. It transpires that the small-time response of the flow to temperature change has a major role on the long-time film dynamics. For this reason, we consider a wall boundary condition that is continuous in time. Therefore, we set

$$T_{wall}(x, t) = \begin{cases} \beta & \text{for } x < x_0, \\ \beta - (\beta + \alpha)f\left(\frac{t}{\tau}\right) & \text{for } x > x_0, \end{cases} \quad (2.26)$$

where $\alpha = (T_f - T_{cold})/(T_f - T_\infty) > 0$, $T_{cold} < T_f$ is specified, $\tau \gg 1$ and the function f is such that $f(0) = 0$ and $f \rightarrow 1$ as $t \rightarrow \infty$ for all $x > x_0$. Assuming that f is continuous

and monotonic in time, there is a time $t = \tau t_c$ with $t_c = O(1)$ at which ice first begins to form – corresponding to the first time at which the plate temperature reaches the freezing temperature for $x > x_0$. Though we have chosen a step profile for the plate temperature here, it is relatively straightforward to generalise to continuous profiles, which give a more physical representation of the plate temperature distribution, although the horizontal location of the ice front is a function of time in such instances.

As seen in the definition of T_{wall} , equation (2.26), the cooling of the plate happens over a long time scale, $\tau \gg 1$. This means that the flow is quasi-steady and temporal effects arise in the ice growth and the film evolution. Thus, there are three distinct temporal regimes in the switch-off problem:

- (i) when $0 < t < \tau t_c$, there is no ice growth, the flow is steady and the thermal problem accounts for the change in plate condition;
- (ii) when $t > \tau t_c$, $t - \tau t_c = O(1)$, there is ice growth, but the magnitude of the temperature jump across the ice layer is small;
- (iii) when $t > \tau t_c$, $t - \tau t_c = O(\tau)$, the temperature jump across the ice layer is of order unity.

We shall discuss each of these regimes separately in §§ 3, 4 and 5 respectively.

3. Before freezing, $0 < t < \tau t_c$

For times $0 < t < \tau t_c$, the plate temperature for $x > x_0$ exceeds the freezing temperature and thus there is no ice present. This temperature change is slow since $\tau \gg 1$ and, since the flow and thermal problems decouple, it transpires that the flow problem is exactly equivalent to the steady-state problem discussed by Nelson *et al.* (1995) and Timoshin (1997). Here we present only a brief description of the steady-state flow solution following the analysis of Nelson *et al.* (1995), where the liquid is supplied at a given flux at the leading edge of the plate; the steady-state thermal problem is discussed in greater detail.

The key assumption in the model is that the aspect ratio of the film, $\varepsilon_w = \ell_w/L$, is much smaller than that of the air boundary layer, so that $\varepsilon_w Re^{1/2} \ll 1$, where the Reynolds number is defined by $Re = \rho_a L U_\infty / \mu_a$. This does not fix ℓ_w , rather it places an upper bound on the dimensional film thickness.

In the air, the usual boundary layer scalings are applicable and we set

$$y = Re^{-1/2} \hat{y}, \quad u = \hat{u}, \quad v = Re^{-1/2} \hat{v}, \quad p = \hat{p}, \quad \theta = \hat{\theta}. \quad (3.1a-e)$$

In the liquid film, the tangential component of velocity U is driven by the shear in the air boundary layer, so that, considering (2.9) and (2.15), the appropriate film scales are given by

$$y = \varepsilon_w \bar{y}, \quad U = \varepsilon_w Re^{1/2} \hat{U}, \quad V = \varepsilon_w^2 Re^{1/2} \hat{V}, \quad P = \hat{P}, \quad \Theta = \hat{\Theta}, \quad H = \varepsilon_w \hat{H}. \quad (3.2a-f)$$

We specifically note that, when $\varepsilon_w Re^{1/2} \ll 1$, the film velocity is an order of magnitude smaller than the air velocity, so that the air does not notice the film to leading order. Finally, we scale time according to the cooling rate by setting

$$t = \tau \bar{t}. \quad (3.3)$$

3.1. The flow problem

The flow problem decouples from the thermal problem and hence remains steady. We expand variables in asymptotic series of the form (recall $\varepsilon_w Re^{1/2} \ll 1$)

$$\hat{u} = \hat{u}_0 + \varepsilon_w Re^{1/2} \hat{u}_1 + \varepsilon_w^2 Re \hat{u}_2 + \dots \quad (3.4)$$

To leading order,

$$\hat{u}_0 = F' \left(\frac{\hat{y}}{\sqrt{x}} \right), \quad \hat{v}_0 = \frac{-1}{2\sqrt{x}} \left(F \left(\frac{\hat{y}}{\sqrt{x}} \right) - \frac{\hat{y}}{\sqrt{x}} F' \left(\frac{\hat{y}}{\sqrt{x}} \right) \right), \quad \hat{p}_0 = 0 \quad (3.5a-c)$$

in the air, where F satisfies Blasius's equation

$$F''' + \frac{FF''}{2} = 0, \quad F(0) = F'(0) = 0, \quad F'(\infty) = 1. \quad (3.6a-c)$$

In particular, note that $F(\eta) = \tilde{\lambda}\eta^2/2 + O(\eta^5)$ as $\eta \rightarrow 0^+$, where $\tilde{\lambda} = 0.332$. In the film, the leading-order problem is given by

$$\hat{U}_{0\hat{y}\hat{y}} = 0, \quad \hat{P}_{0\hat{y}} = 0, \quad \hat{U}_{0x} + \hat{V}_{0\hat{y}} = 0, \quad (3.7a-c)$$

such that

$$\hat{U}_0(x, 0) = 0, \quad \hat{V}_0(x, 0) = 0, \quad \hat{U}_{0\hat{y}}(x, \hat{H}_0) = \mu \hat{u}_{0\hat{y}}(x, 0), \quad \hat{P}_0(x, 0) = 0. \quad (3.8a-d)$$

Therefore, it is straightforward to show that

$$\hat{U}_0 = \frac{\tilde{\lambda}\mu\bar{y}}{\sqrt{x}}, \quad \hat{V}_0 = \frac{\tilde{\lambda}\mu\bar{y}^2}{4x^{3/2}}, \quad \hat{P}_0 = 0, \quad \hat{H}_0 = \mathcal{A}_0 x^{1/4}, \quad (3.9a-d)$$

where \mathcal{A}_0 is a constant determined by prescribing the flux of fluid at $x=0$.

At $O(\varepsilon_w Re^{1/2})$, the correction to the Blasius solution in the air satisfies

$$(\hat{u}_0 \hat{u}_1)_x + \hat{v}_0 \hat{u}_{1\hat{y}} + \hat{v}_1 \hat{u}_{0\hat{y}} = -\hat{p}_{1x} + \hat{u}_{1\hat{y}\hat{y}}, \quad 0 = -\hat{p}_{1\hat{y}}, \quad \hat{u}_{1x} + \hat{v}_{1\hat{y}} = 0, \quad (3.10a-c)$$

subject to

$$\hat{u}_1(x, 0) = \frac{\tilde{\lambda}(\mu - 1)\hat{H}_0}{\sqrt{x}}, \quad \hat{v}_1(x, 0) = 0, \quad (3.11a,b)$$

while at infinity, we require

$$\hat{u}_1 \rightarrow 0, \quad \hat{p}_1 \rightarrow 0 \quad \text{as } \hat{y} \rightarrow \infty. \quad (3.12a,b)$$

Hence $\hat{p}_1 = 0$, and we typically have to solve for \hat{u}_1 , \hat{v}_1 numerically, which we do not pursue here. In the film, the $O(\varepsilon_w Re^{1/2})$ -correction to the flow solution is given by

$$\hat{U}_1 = \mu \hat{u}_{1\hat{y}}(x, 0) \bar{y}, \quad \hat{V}_1 = \frac{-\mu \hat{u}_{1x\hat{y}}(x, 0) \bar{y}^2}{2}, \quad \hat{P}_1 = 0, \quad \hat{H}_1 = \frac{\mathcal{A}_1 x^{1/4}}{\mathcal{A}_0 \tilde{\lambda}} - \frac{\hat{u}_{1\hat{y}}(x, 0) \mathcal{A}_0 x^{3/4}}{2\tilde{\lambda}}, \quad (3.13a-d)$$

where in the $O(\varepsilon_w Re^{1/2})$ -form of the shear stress condition, we have used the fact that the second derivative of the Blasius solution vanishes on the plate, that is $\hat{u}_{0\hat{y}\hat{y}}(x, 0) = 0$. The constant \mathcal{A}_1 is the $O(\varepsilon_w Re^{1/2})$ -correction to the flux of fluid at the plate tip.

3.2. The thermal problem

To leading order, the thermal problem is given by

$$\hat{u}_0 \hat{\theta}_{0x} + \hat{v}_0 \hat{\theta}_{0y} = \frac{1}{Pr} \hat{\theta}_{0yy}, \quad (3.14)$$

$$0 = \frac{\rho c}{\lambda Pr} \hat{\Theta}_{0yy}, \quad (3.15)$$

such that

$$\hat{\Theta}_0(x, 0) = T_{wall}(\bar{t}), \quad \hat{\theta}_0(x, 0) = \hat{\Theta}_0(x, \hat{H}_0), \quad \hat{\Theta}_{0y}(x, \hat{H}_0) = 0, \quad \hat{\theta}_0 \rightarrow -1 \quad \text{as } \hat{y} \rightarrow \infty. \quad (3.16a-d)$$

Therefore, it is straightforward to show that the film temperature is constant across the layer, with

$$\hat{\Theta}_0 = \begin{cases} \beta & \text{for } y = 0, x < x_0, \\ \beta - (\beta + \alpha)f(\bar{t}) & \text{for } y = 0, x > x_0. \end{cases} \quad (3.17)$$

The leading-order film temperature acts as a Dirichlet condition for the leading-order problem for air temperature. To solve this problem, we note that if we consider a problem in which θ_b satisfies (3.14) subject to

$$\theta_b(x, 0, \bar{t}) = \beta, \quad \theta_b \rightarrow -1 \quad \text{as } \hat{y} \rightarrow \infty, \quad (3.18a,b)$$

we can use the Blasius similarity variable, $\eta = \hat{y}/\sqrt{x}$, to integrate (3.14) and we deduce that $\theta_b = \beta - (1 + \beta)G(\eta)$, where

$$G(\eta) = \frac{\int_0^\eta \exp\left(-\frac{Pr}{2} \int_0^s F(\tau) d\tau\right) ds}{\int_0^\infty \exp\left(-\frac{Pr}{2} \int_0^s F(\tau) d\tau\right) ds}. \quad (3.19)$$

Clearly, $\hat{\theta}_0 = \theta_b$ is the solution for all $0 < \bar{t} < t_c$ for $x < x_0$. For $x > x_0$, we write $\hat{\theta}_0 = \theta_b(x, \hat{y}) + \tilde{\theta}(x, \hat{y}, \bar{t})$ and make use of the Lighthill approximation, which assumes that the perturbation to the steady-state solution due to the change in the plate temperature is confined to a sublayer of the thermal boundary layer in which u_0 and v_0 are well approximated by their shear profiles for small \hat{y} , see Lighthill (1950) and Higuera (1991). In the appendix A, we show that the Lighthill approximation is reasonable by computing the full solutions and comparing with the approximation. Thus, the velocity components are approximated by

$$\hat{u}_0 \sim \frac{\tilde{\lambda}\hat{y}}{\sqrt{x}}, \quad \hat{v}_0 \sim \frac{\tilde{\lambda}\hat{y}^2}{4x^{3/4}}, \quad (3.20a,b)$$

so that

$$\frac{\tilde{\lambda}\hat{y}}{\sqrt{x}} \tilde{\theta}_x + \frac{\tilde{\lambda}\hat{y}^2}{4x^{3/4}} \tilde{\theta}_y = \frac{\tilde{\theta}_{yy}}{Pr}, \quad (3.21)$$

subject to

$$\tilde{\theta}(x, 0, \bar{t}) = -(\beta + \alpha)f(\bar{t}), \quad \tilde{\theta} \rightarrow 0 \quad \text{as } \hat{y} \rightarrow \infty. \quad (3.22a,b)$$

We can solve (3.21) and (3.22) explicitly by seeking a similarity solution of the form $\tilde{\theta} = L(\zeta, \bar{t})$, $\zeta = \hat{y}/d(x)$ and find that

$$d(x) = \left(\frac{4}{\lambda Pr} \right)^{1/3} x^{1/4} (x^{3/4} - x_0^{3/4})^{1/3}, \quad (3.23)$$

$$L(\zeta, \bar{t}) = -(\beta + \alpha)f(\bar{t}) \left(1 - \frac{3^{2/3}}{\Gamma(1/3)} \int_0^\zeta e^{-s^{3/3}} ds \right). \quad (3.24)$$

The behaviour of $d(x)$ – which essentially represents the size of the region where the change to the steady-state temperature profile is appreciable – as $x \rightarrow x_0^+$ is given by

$$d(x) \sim \left(\frac{3x_0^{1/2}}{\lambda Pr} \right)^{1/3} (x - x_0)^{1/3} + \dots \quad \text{as } x \rightarrow x_0^+. \quad (3.25)$$

Proceeding to $O(\varepsilon_w Re^{1/2})$ in the film, we find that

$$\hat{\Theta}_1 = \begin{cases} -\frac{\lambda(1+\beta)G'(0)\bar{y}}{\sqrt{x}} & \text{for } x < x_0, \\ \left[-\frac{\lambda(1+\beta)G'(0)}{\sqrt{x}} + \frac{3^{2/3}\lambda(\beta+\alpha)f(\bar{t})}{\Gamma(1/3)d(x)} \right] \bar{y} & \text{for } x > x_0. \end{cases} \quad (3.26)$$

Now, since $1/d(x)$ is singular at the switch-off point, cf. (3.25), clearly the $O(\varepsilon_w Re^{1/2})$ -correction for $\hat{\Theta}$ is singular at $x = x_0$. Therefore, there is an inner region centred around $x = x_0$ in which the air and film thermal problems are coupled at leading order and the expressions used for the velocities in the Lighthill approximation have to be amended to account for the $O(\varepsilon_w Re^{1/2})$ -terms in the velocity expansion. This inner region has horizontal extent of $O(\varepsilon_w^3 Re^{3/2})$ and thickness $O(\varepsilon_w)$. However, before freezing, the inner region does not contribute anything significant to the analysis, so we shall forgo looking at it until § 4.3.

Thus, we have described how each fluid changes from the steady state once the plate cooling is introduced. Specifically, the flow remains unchanged from the Nelson *et al.* (1995) steady state discussed in § 3.1, while the temperature in each fluid decreases due to the cooling effect of the plate for $x > x_0$. Due to the nature of our problem configuration, there is a singularity in the air and film temperature profiles close to the switch-off point $x = x_0$, which will need further investigation once ice growth begins.

4. Thin-ice regime

We now move on to discuss the growth of ice after the plate temperature has reached the freezing temperature, that is $t > \tau t_c$. The first of the ice growth regimes considered is the early stage, where the ice remains much thinner than the film. In particular, we write

$$t = \tau t_c + T, \quad (4.1)$$

and assume that $T = O(1)$. Hence, the ice temperature, Q , on the wall is given by

$$Q(x, 0, T) = -(\beta + \alpha) \left(\frac{f'(t_c)T}{\tau} + \frac{f''(t_c)T^2}{2\tau^2} + \dots \right). \quad (4.2)$$

The thickness of the ice layer is then determined by a balance of terms in the Stefan condition, (2.24). Alluding to § 3.2, the temperature in the film is driven by the heat flux from the air and is thus small over the majority of the plate. Hence, the thickness of the ice is determined by balancing the dominant terms of latent heat, $(Pe_i/Ste)h_i$, and ice heat flux, Q_y , so that

$$\frac{Pe_i}{Ste}\varepsilon_i \sim \frac{1}{\tau\varepsilon_i}, \quad \text{so that } \varepsilon_i \sim \sqrt{\frac{Ste}{Pe_i\tau}}. \quad (4.3)$$

A key assumption is that ice growth has a leading-order effect on the film flow. Along most of the plate, we expect the steady-state scalings to apply for the sizes of the flow velocities in the film, so that $V \sim \varepsilon_w^2 Re^{1/2}$. Therefore, maintaining a leading-order balance in the water–ice surface condition (2.11) gives

$$\varepsilon_i \sim \sqrt{\frac{Ste}{Pe_i\tau}} = \varepsilon_w^2 Re^{1/2}, \quad (4.4)$$

whereby, since $\varepsilon_w Re^{1/2} \ll 1$, this assumption also guarantees that the ice is much thinner than the film.

Even though we do not require any further conditions in this section, note that in our large-time analysis of § 5, the assumption that the ice growth has a leading-order effect on the film flow enforces that $\tau = 1/(\varepsilon_w Re^{1/2})$, which we use henceforth. We discuss whether these assumptions are reasonable in § 6.

4.1. Asymptotic structure

The asymptotic structure is pictured in figure 2. Away from the switch-off point in regions Ia–c upstream (i.e. for $x < x_0$), the air and the film do not undergo any change from their steady-state solutions at leading order and we expect the scalings of §§ 3.1 and 3.2 to hold there. Furthermore, under the assumptions made on the size of the ice growth and the thickness of the ice, the air and film should also evolve on the steady-state scales downstream. In the outer ice region Ic, there is an $O(1/\tau)$ -jump in the temperature over a vertical distance of size ε_i .

Close to the switch-off point, we expect there to be a slightly different behaviour caused by the sudden change in morphology due to the presence of the ice. Indeed, as alluded to in § 3.2, our outer analysis in § 4.2 breaks down when $x - x_0 = O(\varepsilon_w^3 Re^{3/2})$ and $y = O(\varepsilon_w)$ in the air, so there is an inner problem to consider on this scale, denoted by regions IIIa–c. In the inner region, the air and film flows are coupled at leading order. We assume that $\varepsilon_w^3 Re^{3/2} \gg \varepsilon_w$, so that the inner region still has a long, thin aspect ratio. Therefore, there is in fact a further ‘inner–inner’ region in which $x - x_0 \sim \varepsilon_w$ and the quasi-steady Navier–Stokes equations hold. We do not consider the inner–inner region in any detail in this paper.

It transpires that the free surface solutions in the inner and outer regions do not match, so we need an additional intermediate region between the inner and the downstream outer in which $x - x_0 = O(\varepsilon_w Re^{1/2})$ and $y = O(\varepsilon_w)$. We denote the air, film and ice parts of this region by IIa–c respectively. In this region, the flow and temperature solutions are essentially local forms of the outer solution, but the equation describing the evolution of the free surface is hyperbolic.

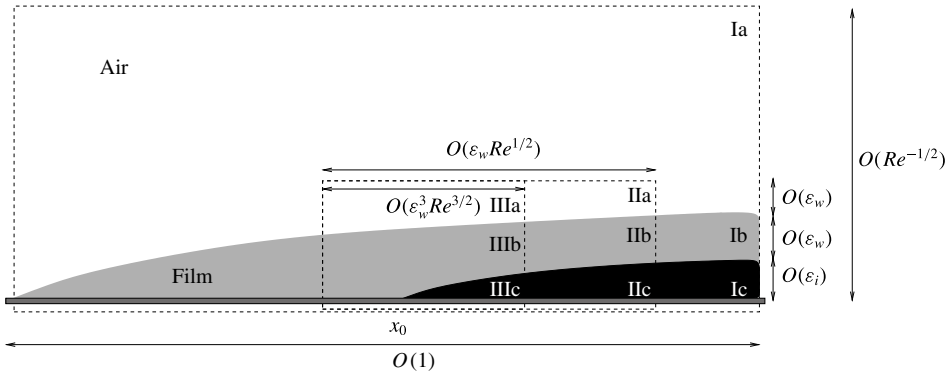


FIGURE 2. Asymptotic structure of the switch-off problem for $T = O(1)$ as described in the text: the outer regions Ia–c, the intermediate regions IIa–c and the inner regions IIIa–c, where a, b, c correspond to the air, film and ice respectively.

4.2. Outer region

For the sake of brevity we define $h \equiv 0$ for $x < x_0$. The scalings for the outer regions Ia–c are given by (3.1) and (3.2), along with the time scale (4.1) and the ice layer scalings

$$y = \varepsilon_w^2 Re^{1/2} Y, \quad h = \varepsilon_w^2 Re^{1/2} \hat{h}, \quad Q = \varepsilon_w Re^{1/2} \hat{Q}. \tag{4.5a–c}$$

We note in particular that the horizontal coordinates in the air, film and ice regions are denoted by \hat{y} , \bar{y} and Y respectively. After substituting these into (2.4)–(2.25), we return the same problem as in § 3 with $\tau = 1$, which brings in the time derivatives in the leading-order momentum and energy equations in the air; with the no-slip, no-flux conditions on the ice surface replaced by

$$\hat{U} + \varepsilon_w^3 Re^{1/2} \hat{h}_x \hat{V} = 0, \quad \hat{V} = (1 - \hat{\rho}) \hat{h}_T \quad \text{on } \bar{y} = \varepsilon_w Re^{1/2} \hat{h}, \tag{4.6a,b}$$

and, recalling that $\tau = 1/\varepsilon_w Re^{1/2}$, the plate temperature condition is given by

$$\left. \begin{aligned} \hat{\Theta}(x, 0, T) &= \beta && \text{for } x < x_0, \\ \hat{Q}(x, 0, T) &= -(\beta + \alpha) \left(f'(t_c)T + \varepsilon_w Re^{1/2} \frac{f''(t_c)T^2}{2} + \dots \right) && \text{for } x > x_0. \end{aligned} \right\} \tag{4.7}$$

Additionally, the energy equation in the ice (2.19) becomes

$$\varepsilon_w^4 Re Pe_i \hat{Q}_T = \varepsilon_w^4 Re \hat{Q}_{xx} + \hat{Q}_{YY}, \tag{4.8}$$

and we also require the temperature and Stefan conditions on the ice surface (2.23)–(2.24), which are given by

$$\hat{\Theta}(x, \varepsilon_w Re^{1/2} \hat{h}, T) = 0, \quad \hat{Q}(x, \hat{h}, T) = 0, \tag{4.9a,b}$$

and

$$\hat{h}_T = (\hat{Q}_Y - \varepsilon_w^4 Re \hat{h}_x \hat{Q}_x)|_{Y=\hat{h}} - \frac{1}{\lambda} (\hat{\Theta}_{\bar{y}} - \varepsilon_w^3 Re^{1/2} \hat{h}_x \hat{\Theta}_x)|_{\bar{y}=\varepsilon_w Re^{1/2} \hat{h}} \tag{4.10}$$

respectively.

4.2.1. Outer flow problem

Treating \hat{h} as a known quantity, the flow problem decouples from the thermal problem, as in §3.1. With the exception of the free surface profile, each of the variables is expanded as an asymptotic series of the form

$$\hat{u} = \hat{u}_0 + \varepsilon_w Re^{1/2} \hat{u}_1 + \varepsilon_w^2 Re \hat{u}_2 + \dots \quad (4.11)$$

For the free surface profile, since the coefficient of \hat{H}_T in the kinematic boundary condition is large (cf. (2.13)), we need to write H as a perturbation to the leading-order steady-state free surface profile: this is not surprising, since the ice is much thinner than the film, we do not expect the change to the steady-state film thickness to be of order unity. Hence, we write

$$\hat{H} = \mathcal{A}_0 x^{1/4} + \varepsilon_w Re^{1/2} \hat{H}_0 + \varepsilon_w^2 Re \hat{H}_1 + \dots \quad (4.12)$$

At leading order, the steady solution prevails in the air, so that \hat{u}_0 , \hat{v}_0 and \hat{p}_0 are given by (3.5). In the film, the leading-order flow is still given by (3.9), but with the vertical component of velocity altered to take account of the ice growth through (4.6), so that

$$\hat{V}_0 = \frac{\tilde{\lambda} \mu \tilde{y}^2}{4x^{3/2}} + (1 - \hat{\rho}) \hat{h}_{0T}. \quad (4.13)$$

Substituting \hat{U}_0 and \hat{V}_0 into the leading-order form of (2.13), integrating and applying the initial condition given in (3.13), we find that

$$\hat{H}_0 = (1 - \hat{\rho}) \hat{h}_0 + \frac{\mathcal{A}_1 x^{1/4}}{\mathcal{A}_0 \tilde{\lambda}} - \frac{\hat{u}_{1\tilde{y}}(x, 0) \mathcal{A}_0 x^{3/4}}{2\tilde{\lambda}}. \quad (4.14)$$

For convenience, we shall define

$$H_{s1}(x) = \frac{\mathcal{A}_1 x^{1/4}}{\mathcal{A}_0 \tilde{\lambda}} - \frac{\hat{u}_{1\tilde{y}}(x, 0) \mathcal{A}_0 x^{3/4}}{2\tilde{\lambda}}, \quad (4.15)$$

henceforth. Therefore, defining $\hat{H}_0 - \hat{h}_0$ as the leading-order correction to the steady-state film thickness, we see that the film thickness in the outer region decreases uniformly according to the amount of fluid lost to the ice layer.

We do not seek to solve the flow problems at $O(\varepsilon_w Re^{1/2})$ and $O(\varepsilon_w^2 Re)$ in detail, but for future reference, we do note that the first- and second-order slip conditions felt by the air layer are given by

$$\left. \begin{aligned} \hat{u}_1(x, 0) &= \frac{\tilde{\lambda}}{\sqrt{x}} (\mu - 1) \mathcal{A}_0 x^{1/4}, \\ \hat{u}_2(x, 0, T) &= \hat{u}_{1\tilde{y}}(x, 0) \mathcal{A}_0 (\mu - 1) x^{1/4} + \frac{\tilde{\lambda}}{\sqrt{x}} (\mu - 1) \hat{H}_0 - \frac{\tilde{\lambda} \mu \hat{h}_0}{\sqrt{x}}, \end{aligned} \right\} \quad (4.16)$$

and that the first-order correction to the horizontal component of the film velocity is

$$\hat{U}_1 = \mu \hat{u}_{1\tilde{y}}(x, 0) \tilde{y} - \frac{\tilde{\lambda} \mu \hat{h}_0}{\sqrt{x}}. \quad (4.17)$$

4.2.2. *Outer thermal problem*

The leading-order thermal problem is very similar to the before freezing problem in § 3.2. To leading-order, the film temperature does not vary across the layer, so that

$$\hat{\theta}_0 = \begin{cases} \beta & \text{for } x < x_0, \\ 0 & \text{for } x > x_0. \end{cases} \tag{4.18}$$

Therefore, the leading-order air temperature must satisfy

$$\hat{\theta}_{0T} + u_b \hat{\theta}_{0x} + v_b \hat{\theta}_{0\hat{y}} = \frac{\hat{\theta}_{0\hat{y}\hat{y}}}{Pr}, \tag{4.19}$$

subject to

$$\hat{\theta}_0 = \hat{\theta}_0 \quad \text{on } \hat{y} = 0, \quad \hat{\theta}_0 \rightarrow -1 \quad \text{as } \hat{y} \rightarrow \infty, \tag{4.20a,b}$$

with the initial condition

$$\hat{\theta}_0(x, \hat{y}, 0) = \begin{cases} \theta_b(x, \hat{y}) & \text{for } x < x_0, \\ \theta_b(x, \hat{y}) + L(\hat{y}/d(x), t_c) & \text{for } x > x_0. \end{cases} \tag{4.21}$$

It is straightforward that to show the initial condition satisfies (4.19) and (4.20) exactly for all $T > 0$.

Assuming that $\varepsilon_w^4 Re Pe_i \ll 1$, by (4.8), the leading-order ice temperature profile varies only linearly across the layer, so that applying (4.7) and (4.9), we find that

$$\hat{Q}_0 = -(\beta + \alpha) f'(t_c) T \left(1 - \frac{Y}{\hat{h}_0} \right). \tag{4.22}$$

Hence, using the leading-order form of the Stefan condition, (4.10) along with the initial condition, $\hat{h}_0 = 0$, we find that

$$\hat{h}_0 = \sqrt{(\beta + \alpha) f'(t_c) T}. \tag{4.23}$$

At $O(\varepsilon_w Re^{1/2})$, the correction to the film temperature is driven purely by the heat flux from the air. We find that

$$\hat{\theta}_1 = \begin{cases} -\frac{\lambda(1 + \beta)G'(0)\bar{y}}{\sqrt{x}} & \text{for } x < x_0, \\ \left(-\frac{\lambda(1 + \beta)G'(0)}{\sqrt{x}} + \frac{3^{2/3}\lambda\beta}{\Gamma(1/3)d(x)} \right) \bar{y} & \text{for } x > x_0. \end{cases} \tag{4.24}$$

Provided that $\varepsilon_w^4 Re Pe_i \ll \varepsilon_w Re^{1/2}$, the first-order form of (4.8) is $\hat{Q}_{1YY} = 0$. Hence, applying the $O(\varepsilon_w Re^{1/2})$ -forms of (4.7) and (4.9), the first-order correction to the ice temperature is given by

$$\hat{Q}_1 = \frac{(\beta + \alpha)}{\hat{h}_0} \left(\frac{f''(t_c)T^2}{2} - \frac{f'(t_c)T\hat{h}_1}{\hat{h}_0} \right) Y - \frac{(\beta + \alpha)f''(t_c)T^2}{2}. \tag{4.25}$$

Therefore, the $O(\varepsilon_w Re^{1/2})$ -form of the Stefan condition can be used to show that \hat{h}_1 must satisfy

$$\hat{h}_1 = -\frac{\lambda T}{2\hat{\lambda}} \left(-\frac{(1+\beta)G'(0)}{\sqrt{x}} + \frac{3^{2/3}\beta}{\Gamma(1/3)d(x)} \right) + \frac{f''(t_c)T^2}{6} \sqrt{\frac{(\beta+\alpha)}{f'(t_c)}}, \quad (4.26)$$

where we have applied the initial condition $\hat{h}_1(x, 0) = 0$.

We recall that $1/d(x)$ is singular as $x \rightarrow x_0$, so that $\varepsilon_w Re^{1/2} \hat{h}_1$ is of the same order of magnitude as \hat{h}_0 when $x - x_0 = O(\varepsilon_w^3 Re^{3/2})$. Therefore, as alluded to in § 3.2, there is an inner region in the neighbourhood of the switch-off point in which the heat flux from the film determines the leading-order ice shape, which we investigate next.

4.3. Inner region

In the inner region, we scale (2.4)–(2.25) by

$$x = x_0 + \varepsilon_w^3 Re^{3/2} \bar{x}, \quad (4.27)$$

along with

$$y = \varepsilon_w \bar{y}, \quad u = \varepsilon_w Re^{1/2} \bar{u}, \quad v = \frac{\bar{v}}{\varepsilon_w Re}, \quad p = \varepsilon_w^2 Re \bar{p}, \quad \theta = \bar{\theta}, \quad (4.28a-e)$$

in the air (region IIIa in figure 2);

$$y = \varepsilon_w \bar{y}, \quad U = \varepsilon_w Re^{1/2} \bar{U}, \quad V = \frac{\bar{V}}{\varepsilon_w Re}, \quad P = \varepsilon_w^2 Re \bar{P}, \quad \Theta = \bar{\Theta}, \quad H = \varepsilon_w \mathcal{H}, \quad (4.29a-f)$$

in the film (region IIIb in figure 2), where $\mathcal{H} = \mathcal{A}_0 x^{1/4} + \varepsilon_w Re^{1/2} \bar{H}$ has been introduced for notational convenience; and

$$y = \varepsilon_w^2 Re^{1/2} Y, \quad Q = \varepsilon_w Re^{1/2} \bar{Q}, \quad h = \varepsilon_w^2 Re^{1/2} \bar{h} \quad (4.30a-c)$$

in the ice (region IIIc in figure 2).

The inner region depends on the relative size of

$$\epsilon = \frac{1}{\varepsilon_w^4 Re^3}. \quad (4.31)$$

In this paper, we assume that $\epsilon \ll 1$, i.e. $\varepsilon_w \gg Re^{-3/4}$, which is equivalent to saying that the inner region has a small aspect ratio and thus that the pressure is essentially constant across the air and film layers. Therefore, the flow model is very similar to the outer region, although now the air and film problems are coupled at leading order. Clearly, there is a further ‘inner-inner’ region where the aspect ratio is of order unity and the Navier–Stokes equations apply at leading order. It will become apparent we do not need to consider this region in detail to resolve the leading-order outer singularity. Note that we shall also assume that

$$\frac{1}{\varepsilon_w^7 Re^4 We} \ll 1 \quad (4.32)$$

throughout this paper in order to neglect surface tension at this stage of the analysis.

Furthermore, note that given the outer solution predicts an $O(\varepsilon_w^2 Re^{1/2})$ -jump in the free surface profile at the switch-off point, it is natural to entertain the possibility of viscous–inviscid interactions occurring as the boundary layer is displaced. In particular, the inner region scales (4.27)–(4.29) correspond to the lower deck of the classical triple-deck when $\varepsilon_w = O(Re^{-5/8})$. This is an interesting limit in its own right, but we do not wish to concentrate on these interactions here; we assume that the film is much thinner than the lower deck, so that $\varepsilon_w \ll Re^{-5/8}$.

When $\varepsilon_w \ll Re^{-5/8}$, the classic triple-deck structure acts as an intermediate region between the inner and outer regions in which there is no viscous–inviscid interaction until a lower order than we consider here. This is discussed in detail by Smith (1973), who considers triple-deck theory over surface irregularities whose length is much greater than $O(Re^{-3/8}L)$, with thickness of $O(Re^{-5/8}L)$. His analysis shows that the disturbance to the Blasius boundary layer flow is small, viscous and pressure free. In our model, the protrusion is much thinner than $O(Re^{-5/8}L)$, so the viscous perturbation to the boundary layer solution is of an even lower order, hence we can simply match between the inner and outer regions directly.

4.3.1. Inner flow problem

After expanding variables in asymptotic series of the form $\bar{u} = \bar{u}_0 + \varepsilon_w Re^{1/2} \bar{u}_1 + \dots$, where the size of the first-order correction is chosen to match with the upstream flow, the leading-order inner flow problem is given by

$$\left. \begin{aligned} \bar{u}\bar{u}_{\bar{x}} + \bar{u}\bar{v}_{\bar{y}} &= -\bar{p}_{\bar{x}} + \bar{u}_{\bar{y}\bar{y}}, & \bar{p}_{\bar{y}} &= 0, & \bar{u}_{\bar{x}} + \bar{v}_{\bar{y}} &= 0, \\ \bar{U}\bar{U}_{\bar{x}} + \bar{U}\bar{V}_{\bar{y}} &= -\bar{P}_{\bar{x}} + \bar{U}_{\bar{y}\bar{y}}, & \bar{P}_{\bar{y}} &= 0, & \bar{U}_{\bar{x}} + \bar{V}_{\bar{y}} &= 0, \end{aligned} \right\} \tag{4.33}$$

such that

$$\bar{U}(\bar{x}, 0, T) = 0, \quad \bar{V}(\bar{x}, 0, T) = 0, \tag{4.34a,b}$$

and

$$\bar{U} = \bar{u}, \quad \bar{V} = \bar{v}, \quad \bar{V} = \frac{\mathcal{A}_0}{4x_0^{3/4}} \bar{U}, \quad \bar{P} = \bar{p}, \quad \bar{U}_{\bar{y}} = \mu \bar{u}_{\bar{y}} \quad \text{on } \bar{y} = \mathcal{A}_0 x_0^{1/4}. \tag{4.35a-e}$$

It is straightforward to show that the appropriate solution matching with the outer flow up- and downstream is

$$\bar{u}_0 = \frac{\tilde{\lambda}}{\sqrt{x_0}} (\bar{y} + (\mu - 1)\mathcal{A}_0 x_0^{1/4}), \quad \bar{v}_0 = 0, \quad \bar{p}_0 = 0, \quad \bar{U}_0 = \frac{\tilde{\lambda} \mu \bar{y}}{\sqrt{x_0}}, \quad \bar{V}_0 = 0, \quad \bar{P}_0 = 0, \tag{4.36a-f}$$

which is exactly the local shear profile of the leading-order outer solution.

In order to find the first-order correction to the free surface profile, we require \bar{U}_1 and \bar{V}_1 . At $O(\varepsilon_w Re^{1/2})$, the inner region flow problem is given by

$$\frac{\tilde{\lambda}}{\sqrt{x_0}} (\bar{y} + (\mu - 1)\mathcal{A}_0 x_0^{1/4}) \bar{u}_{1\bar{x}} + \frac{\tilde{\lambda} \bar{v}_1}{\sqrt{x_0}} = -\bar{p}_{1\bar{x}} + \bar{u}_{1\bar{y}\bar{y}}, \tag{4.37}$$

$$0 = -\bar{p}_{1\bar{y}}, \tag{4.38}$$

$$\bar{u}_{1\bar{x}} + \bar{v}_{1\bar{y}} = 0, \tag{4.39}$$

$$\frac{\tilde{\lambda} \mu \bar{y}}{\sqrt{x_0}} \bar{U}_{1\bar{x}} + \frac{\tilde{\lambda} \mu \bar{V}_1}{\sqrt{x_0}} = -\rho \bar{P}_{1\bar{x}} + \frac{\rho}{\mu} \bar{U}_{1\bar{y}\bar{y}}, \tag{4.40}$$

$$0 = -\rho\bar{P}_{1\bar{y}}, \quad (4.41)$$

$$\bar{U}_{1\bar{x}} + \bar{V}_{1\bar{y}} = 0, \quad (4.42)$$

subject to the no-slip, no-flux conditions

$$\bar{U}_1(\bar{x}, 0, T) = -\frac{\tilde{\lambda}\mu\bar{h}_0}{\sqrt{\bar{x}_0}}, \quad \bar{V}_0(\bar{x}, 0, T) = 0; \quad (4.43a,b)$$

the continuity of velocity conditions

$$\bar{u}_1(\bar{x}, \mathcal{A}_0x_0^{1/4}, T) = \bar{U}_1(\bar{x}, \mathcal{A}_0x_0^{1/4}, T) - \frac{\tilde{\lambda}(\mu-1)\bar{H}_0}{\sqrt{\bar{x}_0}}, \quad (4.44)$$

$$\bar{v}_1(\bar{x}, \mathcal{A}_0x_0^{1/4}, T) = \bar{V}_1(\bar{x}, \mathcal{A}_0x_0^{1/4}, T); \quad (4.45)$$

and the stress conditions

$$\bar{p}_1(\bar{x}, \mathcal{A}_0x_0^{1/4}, T) = \bar{P}_1(\bar{x}, \mathcal{A}_0x_0^{1/4}, T), \quad \mu\bar{u}_{1\bar{y}}(\bar{x}, \mathcal{A}_0x_0^{1/4}, T) = \bar{U}_{1\bar{y}}(\bar{x}, \mathcal{A}_0x_0^{1/4}, T). \quad (4.46a,b)$$

The pressure must decay in the far field, that is

$$\bar{p}_1 \rightarrow 0 \quad \text{as } \bar{y} \rightarrow \infty, \quad \bar{p}_1, \bar{P}_1 \rightarrow 0 \quad \text{as } \bar{x} \rightarrow -\infty. \quad (4.47a,b)$$

Upstream, we must match to the oncoming flow from regions Ia–b. In the air, we have

$$\bar{u}_1 \rightarrow u_{1\hat{y}}(x_0, 0)(\bar{y} + (\mu-1)\mathcal{A}_0x_0^{1/4}) + \frac{(\mu-1)\tilde{\lambda}H_{s1}(x_0)}{\sqrt{x_0}}, \quad \bar{v}_1 = 0 \quad \text{as } \bar{x} \rightarrow -\infty, \quad (4.48a,b)$$

while in the film we have

$$\bar{U}_1 = \mu u_{1\hat{y}}(x_0, 0)\bar{y}, \quad \bar{V}_1 = 0 \quad \text{as } \bar{x} \rightarrow -\infty. \quad (4.49a,b)$$

If we consider the solution in the main part of the boundary layer in region Ia as $\hat{y} \rightarrow 0$ and $x \rightarrow x_0$, we deduce that the first-order inner air velocity must satisfy

$$\bar{u}_1 \rightarrow u_{1\hat{y}}(x_0, 0)(\bar{y} + (\mu-1)\mathcal{A}_0x_0^{1/4}) + \frac{(\mu-1)\tilde{\lambda}\bar{H}_0}{\sqrt{\bar{x}_0}} - \frac{\tilde{\lambda}\mu\bar{h}_0}{\sqrt{\bar{x}_0}}, \quad \bar{v}_1 \rightarrow 0 \quad (4.50a,b)$$

as $\bar{y} \rightarrow \infty$.

Therefore, the $O(\varepsilon_w Re^{1/2})$ -inner solution is

$$\bar{u}_1 = u_{1\hat{y}}(x_0, 0)(\bar{y} + (\mu-1)\mathcal{A}_0x_0^{1/4}) + \frac{(\mu-1)\tilde{\lambda}\bar{H}_0}{\sqrt{\bar{x}_0}} - \frac{\tilde{\lambda}\mu\bar{h}_0}{\sqrt{\bar{x}_0}}, \quad (4.51)$$

$$\bar{v}_1 = -\frac{\tilde{\lambda}\mu}{\sqrt{\bar{x}_0}}(\bar{y} + (\mu-1)\mathcal{A}_0x_0^{1/4})((\mu-1)\bar{H}_{0\bar{x}} - \mu\bar{h}_{0\bar{x}}), \quad (4.52)$$

$$\bar{U}_1 = \mu u_{1\hat{y}}(x_0, 0)\bar{y} - \frac{\tilde{\lambda}\mu\bar{h}_0}{\sqrt{\bar{x}_0}}, \quad (4.53)$$

$$\bar{V}_1 = \frac{\tilde{\lambda}\mu\bar{h}_{0\bar{x}}\bar{y}}{\sqrt{\bar{x}_0}}. \quad (4.54)$$

Hence using the $O(\varepsilon_w Re^{1/2})$ -form of the kinematic boundary condition, we find that

$$\bar{H}_0 = \bar{h}_0 + H_{s1}(x_0), \tag{4.55}$$

where the constant of integration is chosen to match with the incoming free surface as $\bar{x} \rightarrow -\infty$. Note that the free surface correction simply tells us that, in the inner region, the film moves up over the ice that forms, without losing mass (which is a lower-order effect), so its thickness remains constant. This will present a problem when matching with the outer region.

4.3.2. *Thermal problem in regions IIIa–c*

The leading-order thermal problem is given by

$$\frac{\tilde{\lambda}}{\sqrt{x_0}}(\bar{y} + (\mu - 1)\mathcal{A}_0 x_0^{1/4})\bar{\theta}_{0\bar{x}} = \frac{\bar{\theta}_{0\bar{y}\bar{y}}}{Pr}, \tag{4.56}$$

$$\frac{\tilde{\lambda}\mu\bar{y}}{\sqrt{x_0}}\bar{\Theta}_{0\bar{x}} = \frac{\rho c}{\lambda Pr}\bar{\Theta}_{0\bar{y}\bar{y}}, \tag{4.57}$$

$$\bar{Q}_{0Y} = 0, \tag{4.58}$$

subject to

$$\bar{\Theta}_0(\bar{x}, 0, T) = \begin{cases} \beta & \text{for } \bar{x} < 0, \\ 0 & \text{for } \bar{x} > 0, \end{cases} \tag{4.59}$$

$$\bar{Q}_0(\bar{x}, 0, T) = -(\beta + \alpha)f'(t_c)T, \tag{4.60}$$

$$\bar{Q}_0(\bar{x}, \bar{h}_0, T) = 0, \tag{4.61}$$

$$\bar{\theta}_0(\bar{x}, \mathcal{A}_0 x_0^{1/4}, T) = \bar{\Theta}_0(\bar{x}, \mathcal{A}_0 x_0^{1/4}, T), \tag{4.62}$$

$$\lambda\bar{\theta}_{0\bar{y}}(\bar{x}, \mathcal{A}_0 x_0^{1/4}, T) = \bar{\Theta}_{0\bar{y}}(\bar{x}, \mathcal{A}_0 x_0^{1/4}, T). \tag{4.63}$$

In order to match with the thermal solutions in the outer region upstream in regions Ia–b and to region Ia for large \bar{y} , we also require

$$\bar{\theta}_0, \bar{\Theta}_0 \rightarrow \beta \quad \text{as } \bar{x} \rightarrow -\infty, \quad \bar{\theta}_0 \rightarrow \beta \quad \text{as } \bar{y} \rightarrow \infty. \tag{4.64a,b}$$

The second of these conditions follows from the similarity form of the outer solution: if we fix $x - x_0 = O(\varepsilon_w^3 Re^{3/2})$ and set $y = (\varepsilon_w Re^{1/2})^k y^\dagger$, for $0 < k < 1$, the integral term in (3.24) vanishes, so that $\bar{\theta}_0 \sim \beta$.

It is straightforward to integrate (4.58), so that after applying (4.60) and (4.61), we find that

$$\bar{Q}_0 = -(\beta + \alpha)f'(t_c)T \left(1 - \frac{Y}{\bar{h}_0} \right), \tag{4.65}$$

which is unchanged from the leading-order outer solution, (4.22). In general, we must tackle (4.56), (4.57), (4.59), (4.62)–(4.64) numerically, but first we note that the problem is independent of time, so we can use (4.65) along with the leading-order form of the Stefan condition to find that

$$\bar{h}_0 = \left(-\frac{1}{\tilde{\lambda}}\bar{\Theta}_{0\bar{y}}(\bar{x}, 0) + \sqrt{\frac{1}{\tilde{\lambda}^2}\bar{\Theta}_{0\bar{y}}(\bar{x}, 0)^2 + 4(\beta + \alpha)f'(t_c)} \right) \frac{T}{2}, \tag{4.66}$$

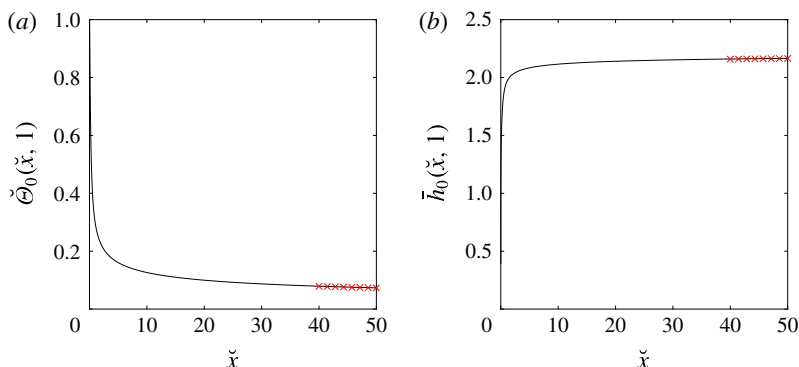


FIGURE 3. (Colour online) (a) The film temperature on the air–water interface in the inner region and the outer solution asymptote (red crosses) for the parameters given in the text. (b) The ice surface profile in the inner region and its asymptote according to the outer solution (red crosses) for the parameters given in the text.

where we have applied the initial condition $\bar{h}_0(\bar{x}, 0) = 0$. Note that, provided that $\bar{\Theta}_{0\bar{y}} \rightarrow 0$ as $\bar{x} \rightarrow \infty$, clearly this matches with the outer solution, (4.23), in the far field.

In order to find $\bar{\Theta}_0$, we return to (4.56), (4.57), (4.59), (4.62)–(4.64). We note that it is possible to use Fourier transforms to find a solution in Fourier space in terms of Airy functions, but since we would need to invert the resulting solution numerically, it is easier to simply compute solutions to the partial differential equations directly. The equations are parabolic, with linear coefficients, which can be solved numerically at each value of \bar{x} as a tridiagonal system in \bar{y} . To simplify the computation, we first make the scalings

$$\bar{x} = \tilde{\lambda} Pr A_0^3 x_0^{1/4} \check{x}, \quad \bar{y} = A_0 x_0^{1/4} \check{y}, \quad \bar{\theta}_0 = \beta \check{\theta}, \quad \bar{\Theta}_0 = \beta \check{\Theta}, \quad (4.67a-d)$$

which reduces the number of parameters in the system to three: μ , λ and $\kappa = \mu\lambda/(\rho c)$.

We truncate the computational domain so that we solve on the rectangle $[-N_1, N_2] \times [0, M]$, where M, N_1 are taken to be suitably large in order to impose the far-field conditions. The most significant changes in behaviour happen close to $\check{x} = 0$, close to the plate and close to the air–water interface. Therefore, we use a non-uniform grid whose points are clustered in the vicinity of these regions. Starting from $-N_1$, we solve the problem successively at each station in \check{x} , where the derivatives are approximated by a centred finite difference scheme. The leading-order inner thermal problem can then be written as a large, sparse tridiagonal system that is readily inverted.

We consider the results of this code for $N_1 = 10$, $N_2 = 50$, $M = 50$, $\kappa = 2/3$, $\lambda = \mu = 1/2$. The distances between neighbouring points vary between 10^{-3} and 10^{-1} . In figure 3(a), we have plotted the film temperature on the free surface, $\check{\Theta}(\check{x}, 1)$, along with the first term of the outer solution for the film temperature expanded in inner variables, *viz.*

$$\beta^{-1} \Theta_0 \sim \frac{3^{1/3} \lambda}{\Gamma(1/3) \check{x}^{1/3}} \quad \text{as } x - x_0 = \varepsilon_w^3 Re^{3/2} \left(\tilde{\lambda} Pr A_0^3 x_0^{1/4} \check{x} \right) \rightarrow 0 \quad (4.68)$$

calculated from (4.24). We only present the solution for $\check{x} > 0$ since $\check{\Theta}_0$ is identically 1 for $\check{x} < 0$. As we can see, the temperature rapidly decays from the steady-state temperature towards the outer solution as \check{x} gets large. It is clear that $\check{\Theta}_{0\check{x}}$ is discontinuous at the switch-off point, but this is something that can readily be regularised by making the plate temperature continuous or by considering the ‘inner–inner’ region in which the full Navier–Stokes equations hold.

Given a heating function $f(\cdot)$, we use the numerical solution for $\check{\Theta}_0$ to solve for the leading-order inner ice profile using the analytic solution (4.66). We take

$$f(s) = 1 - e^{-s}, \tag{4.69}$$

which gives $t_c = -\log(\alpha/(\beta + \alpha))$. For $\alpha = 5$, $\beta = 1.4$, $\mathcal{A}_0 x_0^{1/4} = 1$ and $\hat{\lambda} = 0.714$, the ice profile at time $T = 1$ is plotted against \check{x} in figure 3(b), along with the first term of the inner expansion of the outer ice profile solution (4.23), (4.26), viz.:

$$\hat{h} \sim \sqrt{(\beta + \alpha)f'(t_c)T} - \frac{3^{1/3}\beta\lambda T}{2\hat{\lambda}\Gamma(1/3)\mathcal{A}_0 x_0^{1/4}\check{x}^{1/3}} \quad \text{as } x - x_0 = \varepsilon_w^3 Re^{3/2}(\tilde{\lambda}Pr\mathcal{A}_0^3 x_0^{1/4}\check{x}) \rightarrow 0. \tag{4.70}$$

We see very good agreement between the asymptotic results and analytic solutions, which indicates that the numerical scheme is convergent. What is also clear, is the sharp front the ice forms as $\bar{x} \rightarrow 0^+$, forming a step-like profile. This could lead to interesting interactions with the air flow for larger ε_w – recall that the free surface correction is simply given by the ice profile, cf. (4.55).

We noted previously that the solution for the correction to the free surface profile in the inner region suggests that no mass is lost to the ice layer, which means that \bar{H}_1 cannot match with the outer solution as $\bar{x} \rightarrow \infty$. This means that we require a further intermediate region in order to match between the inner and outer free surface profiles, cf. regions IIa–c in figure 2.

4.4. Intermediate region

In the inner region, the kinematic boundary condition on the free surface is dominated by the nonlinear uH_x term, while in the outer region, it is dominated by the H_t term. In the intermediate region, we therefore expect to retain the full kinematic boundary condition, which should allow a solution to be found that matches with both the inner and outer regions. The appropriate horizontal scale in (2.4)–(2.25) is

$$x = x_0 + \varepsilon_w Re^{1/2}\check{x}. \tag{4.71}$$

Note that we are only interested in the intermediate region for $\check{x} > 0$. Furthermore, in the air (IIa in figure 2), we scale

$$y = \varepsilon_w \bar{y}, \quad u = \varepsilon_w Re^{1/2}\check{u}, \quad v = \varepsilon_w \check{v}, \quad p = \check{p}, \quad \theta = \check{\theta}; \tag{4.72a–e}$$

and in the film (IIb in figure 2), we set

$$y = \varepsilon_w \bar{y}, \quad U = \varepsilon_w Re^{1/2}\check{U}, \quad V = \varepsilon_w \check{V}, \quad P = \check{P}, \quad \Theta = \check{\Theta}, \quad H = \varepsilon_w \check{\mathcal{H}}, \tag{4.73a–f}$$

where $\check{\mathcal{H}} = \mathcal{A}_0(x_0 + \varepsilon_w Re^{1/2}\check{x})^{1/4} + \varepsilon_w Re^{1/2}\check{H}$. In the ice (IIc in figure 2), we set

$$y = \varepsilon_w^2 Re^{1/2}Y, \quad Q = \varepsilon_w Re^{1/2}\check{Q}, \quad h = \varepsilon_w^2 Re^{1/2}\check{h}. \tag{4.74a–c}$$

The method of solution is very similar to the inner region, so we omit details here. We expand the variables in asymptotic series of the form $\dot{u} = \dot{u}_0 + \varepsilon_w Re^{1/2} \dot{u}_1 + \dots$. At leading order, we find that the flow solution is again the local shear profile of the outer solution:

$$\dot{u}_0 = \frac{\tilde{\lambda}}{\sqrt{x_0}}(\bar{y} + (\mu - 1)\mathcal{A}_0 x_0^{1/4}), \quad \dot{v}_0 = 0, \quad \dot{p}_0 = 0, \quad \dot{U}_0 = \frac{\tilde{\lambda}\mu\bar{y}}{\sqrt{x_0}}, \quad \dot{V}_0 = 0, \quad \dot{P}_0 = 0. \quad (4.75a-f)$$

At $O(\varepsilon_w Re^{1/2})$, we have

$$\begin{aligned} \dot{u}_1 = & \left(\frac{-\tilde{\lambda}\dot{x}}{2x_0^{3/2}} + u_{1\bar{y}}(x_0, 0) \right) \bar{y} - \frac{\tilde{\lambda}(\mu - 1)\mathcal{A}_0\dot{x}}{4x_0^{5/4}} \\ & + (\mu - 1)\mathcal{A}_0 x_0^{1/4} u_{1\bar{y}}(x_0, 0) + \frac{\tilde{\lambda}(\mu - 1)\dot{H}_0}{\sqrt{x_0}} - \frac{\tilde{\lambda}\mu\dot{h}_0}{\sqrt{x_0}}, \end{aligned} \quad (4.76)$$

$$\begin{aligned} \dot{v}_1 = & \frac{\tilde{\lambda}}{4x_0^{3/2}} (\bar{y}^2 - \mathcal{A}_0^2 \sqrt{x_0}) + \frac{\tilde{\lambda}\mu\bar{y}^2}{4x_0^{3/2}} + (1 - \hat{\rho})\dot{h}_{0T} \\ & + \frac{\tilde{\lambda}}{\sqrt{x_0}} \left(\frac{(\mu - 1)\mathcal{A}_0}{4x_0} - (\mu - 1)\dot{H}_{0\dot{x}} + \mu\dot{h}_{0\dot{x}} \right) (\bar{y} - \mathcal{A}_0 x_0^{1/4}), \end{aligned} \quad (4.77)$$

$$\dot{U}_1 = \mu \left(\frac{-\tilde{\lambda}\dot{x}}{2x_0^{3/2}} + u_{1\bar{y}}(x_0, 0) \right) \bar{y} - \frac{\tilde{\lambda}\mu\dot{h}_0}{\sqrt{x_0}}, \quad (4.78)$$

$$\dot{V}_1 = \frac{\tilde{\lambda}\mu\bar{y}^2}{4x_0^{3/2}} + (1 - \hat{\rho})\dot{h}_{0T}, \quad (4.79)$$

along with $\dot{p}_1 = \dot{P}_1 = 0$.

Therefore, using the $O(\varepsilon_w Re^{1/2})$ -form of the kinematic boundary condition, we find that

$$\dot{H}_{0T} + \frac{\tilde{\lambda}\mu\mathcal{A}_0}{x_0^{1/4}} \dot{H}_{\dot{x}} = (1 - \hat{\rho})\dot{h}_{0T}. \quad (4.80)$$

We require an initial condition and a boundary condition to solve this hyperbolic problem. Initially, the steady-state solution prevails, so that

$$\dot{H}_0(\dot{x}, 0) = H_{s1}(x_0) \quad \text{for } \dot{x} > 0. \quad (4.81)$$

Furthermore, matching with the far-field behaviour of the inner solution, the boundary condition we must prescribe is given by

$$\dot{H}_0(0, T) = \sqrt{(\beta + \alpha)f'(t_c)T} + H_{s1}(x_0) \quad \text{for } T > 0. \quad (4.82)$$

We require the leading-order ice shape in the intermediate region to solve (4.80). On the horizontal length scale of the inner region, however, our outer solution is still valid, thus the thermal region is completely passive in the intermediate region at leading order, whereby

$$\dot{\theta}_0 = 0, \quad \dot{\Theta}_0 = 0, \quad \dot{Q}_0 = -(\beta + \alpha)f'(t_c)T \left(1 - \frac{Y}{h_0} \right), \quad \dot{h}_0 = \sqrt{(\beta + \alpha)f'(t_c)T}. \quad (4.83a-d)$$

Hence, we can solve (4.80)–(4.82) using the method of characteristics, finding that

$$\dot{H}_0 = \begin{cases} (1 - \hat{\rho})\sqrt{(\beta + \alpha)f'(t_c)}T + H_{s1}(x_0) & \text{for } \dot{x} \geq \zeta T, T > 0, \\ \sqrt{(\beta + \alpha)f'(t_c)}T - \frac{\hat{\rho}\sqrt{(\beta + \alpha)f'(t_c)}\dot{x}}{\zeta} + H_{s1}(x_0) & \text{for } 0 < \dot{x} \leq \zeta T, T > 0, \end{cases} \tag{4.84}$$

where $\zeta = \tilde{\lambda}\mu\mathcal{A}_0x_0^{-1/4}$. By fixing T and letting $\dot{x} \rightarrow \infty$, it is clear that (4.84) matches with (4.23) in the far field, while it must match with the inner solution due to our choice of boundary condition (4.82).

Clearly, we see that the solution is continuous in \dot{x} , but its slope is not continuous. Differentiating (4.84), we see that

$$\dot{H}_{0\dot{x}} = \begin{cases} 0 & \text{for } \dot{x} \geq \zeta T, T > 0, \\ -\frac{\hat{\rho}\sqrt{(\beta + \alpha)f'(t_c)}}{\zeta} & \text{for } 0 < \dot{x} \leq \zeta T, T > 0, \end{cases} \tag{4.85}$$

so that a slope discontinuity propagates along the characteristic emanating from the switch-off point at $T = 0$. It is possible we can remove this slope discontinuity by considering the problem at even earlier time scales or by introducing further physical effects, but we do not pursue this any further here.

Perhaps more importantly, if we let T and \dot{x} become large simultaneously – specifically when $T, \dot{x} = O(1/(\varepsilon_w Re^{1/2}))$ – we see that the slope discontinuity moves into the outer region, so that in the large-time problem that we now move on to consider, we expect the outer free surface to be more complex than that which we saw in § 4.2, where the free surface was perturbed simply by the loss of mass into the ice region.

5. Large-time solution

Now let us suppose that $t = \tau(t_c + \bar{t})$, so that the temperature jump across the ice layer is $O(1)$. The dimensionless Stefan condition, (2.24), tells us that the ice thickness on this time scale is

$$[h] \sim \sqrt{\frac{Ste \tau}{Pe_i}}, \tag{5.1}$$

which is $O(\tau)$ larger than in § 4. Hence, the ratio of the ice to film thickness is $O(\tau)$ larger in this region. However, the flux condition on the film velocity is of the same order of magnitude, since both h and t are scaled with τ . Therefore, assuming that the ice is at most the same thickness as the film, we take

$$\frac{1}{\varepsilon_w} \sqrt{\frac{Ste \tau}{Pe_i}} = O(1), \tag{5.2}$$

which, combined with (4.4) gives $\tau = 1/(\varepsilon_w Re^{1/2})$ as we stated *a priori* in § 4.

5.1. Asymptotic structure

The asymptotic structure is simpler in the large-time limit. Upstream of the switch-off point, nothing has changed, and the steady-state solution still holds. Furthermore,

the steady-state scalings still apply in the outer region downstream, although we now expect $O(1)$ -perturbations in the free surface profile due to the presence of the ice. As in the early time model, we denote the outer air, film and ice regions by Ia–c.

Therefore, akin to §4.2, we shall find that the outer thermal solution is singular when $x - x_0 = O(\varepsilon_w^3 Re^{3/2})$, so that we require an inner region about the switch-off point. As in the early time model, we denote the inner air, film and ice regions by IIIa–c. We shall be able to match between these directly when $t = O(1/(\varepsilon_w Re^{1/2}))$, so the intermediate region is not necessary. Hence the schematic in figure 2 still applies, except regions IIa–c are no longer the result of a formal asymptotic solution.

5.2. Outer region

The outer region (Ia–c in figure 2) scales are again given by (3.1) and (3.2) along with the ice scales

$$y = \varepsilon_w \bar{y}, \quad Q = \hat{Q}, \quad h = \varepsilon_w \hat{h}. \quad (5.3a-c)$$

We expand all the variables in the outer region in asymptotic series of the form $\hat{u} = \hat{u}_0 + \varepsilon_w Re^{1/2} \hat{u}_1 + \dots$. At leading order, it is unsurprising that (3.5) still holds in the air, while the leading-order film flow is modified slightly due to the ice, so that

$$\hat{U}_0 = \frac{\tilde{\lambda}\mu}{\sqrt{x}}(\bar{y} - \hat{h}_0), \quad \hat{V}_0 = \frac{\tilde{\lambda}\mu}{4x^{3/2}}(\bar{y} - \hat{h}_0) + \frac{\tilde{\lambda}\mu\hat{h}_{0x}}{\sqrt{x}}(\bar{y} - \hat{h}_0) + (1 - \hat{\rho})\hat{h}_{0\bar{t}}, \quad P_0 = 0. \quad (5.4a-c)$$

Hence, using the kinematic condition, the free surface must satisfy

$$(\hat{H}_0 - \hat{h}_0)_{\bar{t}} + \left(\frac{\tilde{\lambda}\mu(\hat{H}_0 - \hat{h}_0)^2}{2\sqrt{x}} \right)_x = -\hat{\rho}\hat{h}_{0\bar{t}}. \quad (5.5)$$

We shall talk more about solving this equation after considering the thermal problem.

The leading-order thermal problem is also very similar to §4.2. The film temperature does not vary across the layer and is given by (4.18), while the air temperature problem is the steady equivalent of (4.19) and (4.20), so the solution is given by (4.21). The ice temperature satisfies

$$\hat{Q}_{0\bar{y}\bar{y}} = 0, \quad \hat{Q}_0(x, \hat{h}_0, \bar{t}) = 0, \quad \hat{Q}_0(x, 0, \bar{t}) = \beta - (\beta + \alpha)f(t_c + \bar{t}), \quad (5.6a-c)$$

whereby

$$\hat{Q}_0 = (\beta - (\beta + \alpha)f(t_c + \bar{t})) \left(1 - \frac{\bar{y}}{\hat{h}_0} \right). \quad (5.7)$$

Therefore, the leading-order outer ice profile is found from the Stefan condition to be

$$\hat{h}_0 = \left(-2 \int_0^{\bar{t}} \beta - (\beta + \alpha)f(t_c + s) ds \right)^{1/2}, \quad (5.8)$$

which clearly matches with (4.23) as $\bar{t} \rightarrow 0$.

Since the leading-order air temperature is given by (4.21), the $O(\varepsilon_w Re^{1/2})$ -correction to the film temperature is given by (4.24) with \bar{y} replaced by $(\bar{y} - \hat{h}_0)$. Thus, the $O(\varepsilon_w Re^{1/2})$ -correction to the ice profile is given by

$$\hat{h}_1 = \frac{-\lambda}{\hat{\lambda}\hat{h}_0(\bar{t})} \left(-\frac{(1 + \beta)G'(0)}{\sqrt{x}} + \frac{3^{2/3}\beta}{\Gamma(1/3)d(x)} \right) \int_0^{\bar{t}} \hat{h}_0(s) ds. \quad (5.9)$$

Wherefore, since $d(x)$ is singular at the switch-off point, there is a non-uniformity in the asymptotic expansions of $\hat{\Theta}$ and \hat{h} as $x - x_0 \rightarrow 0$. In particular, when $x - x_0 = \varepsilon_w^3 Re^{3/2}$ and $\hat{y} = O(\varepsilon_w Re^{1/2})$, the air and film heat fluxes across the free surface balance at leading order. Hence, an inner region exists around the switch-off point.

We will not go into the inner region in detail here, since the analysis is essentially the same as the thin-ice case presented in §4.3. The important information is the far-field behaviour of the inner free surface, which is readily found to be

$$\bar{H}_0 \sim \mathcal{A}_0 x_0^{1/4} + \hat{h}_0 \quad \text{as } \bar{x} \rightarrow \infty, \tag{5.10}$$

where \bar{H}_0 is the leading-order inner free surface profile and \bar{x} is the horizontal inner coordinate. We can use this condition to apply a boundary condition at $x=x_0$ on (5.5).

5.3. Free surface equation

We now return to the evolution equation for the free surface profile in the leading-order outer problem. Recall that

$$(\hat{H}_0 - \hat{h}_0)_{\bar{t}} + \left(\frac{\tilde{\lambda}\mu(\hat{H}_0 - \hat{h}_0)^2}{2\sqrt{\bar{x}}} \right)_x = \frac{-\hat{\rho}\dot{\hat{h}}_0}{\hat{h}_0}. \tag{5.11}$$

From the leading-order inner solution, the appropriate boundary condition to apply at $x = x_0$ is

$$\hat{H}_0(x_0, \bar{t}) = \mathcal{A}_0 x_0^{1/4} + \hat{h}_0. \tag{5.12}$$

If we consider what happens as $T \rightarrow \infty$ in §4.4, it transpires that the appropriate initial condition is

$$\hat{H}_0 \sim \begin{cases} \mathcal{A}_0 x^{1/4} + \sqrt{(\beta + \alpha)f'(t_c)\bar{t}} - \frac{\hat{\rho}\sqrt{(\beta + \alpha)f'(t_c)}(x - x_0)}{\zeta} & \text{for } x_0 < x < \zeta\bar{t} + x_0, \\ \mathcal{A}_0 x^{1/4} + (1 - \hat{\rho})\sqrt{(\beta + \alpha)f'(t_c)\bar{t}} & \text{for } x > \zeta\bar{t} + x_0 \end{cases} \tag{5.13}$$

as $\bar{t} \rightarrow 0$.

We need to solve (5.11)–(5.13) numerically. We pick an initial time station, $t_0 \ll 1$, and march the problem forward in time using a Lax–Wendroff scheme with a Superbee flux limiter, see Sweby (1984). The flux limiter uses a Lax–Wendroff scheme away from any rapid changes in \bar{H}_0 and an upwind scheme close to these regions of rapid change. The flux limiter should capture any rapid changes in height in the free surface that may arise due to the non-smooth initial data we supply.

With f chosen as in (4.69), we plot the thickness of the ice film, $\hat{H}_0 - \hat{h}_0$, at various times and for various values of α in figure 4. Changing α essentially dictates how fast the ice grows through the ice heat flux in the Stefan condition, cf. (5.8). The initial time is chosen to be $t_0 = 0.01$, with the time step taken to be 10^{-5} . The switch-off point is taken to be $x_0 = 2$, and the computational domain extends to $x = 22$ with space steps of size 10^{-3} .

In figure 4(a), $\alpha = 1/7$, which represents relatively slow ice growth. The discontinuity in the slope of the free surface clearly moves downstream and accentuates as time increases, eventually steepening into what appears to be a shock. The magnitude of the jump across the discontinuity also grows, until eventually the thickness of the water film vanishes in finite time, at $\bar{t} = 8.2$. The discontinuity persists

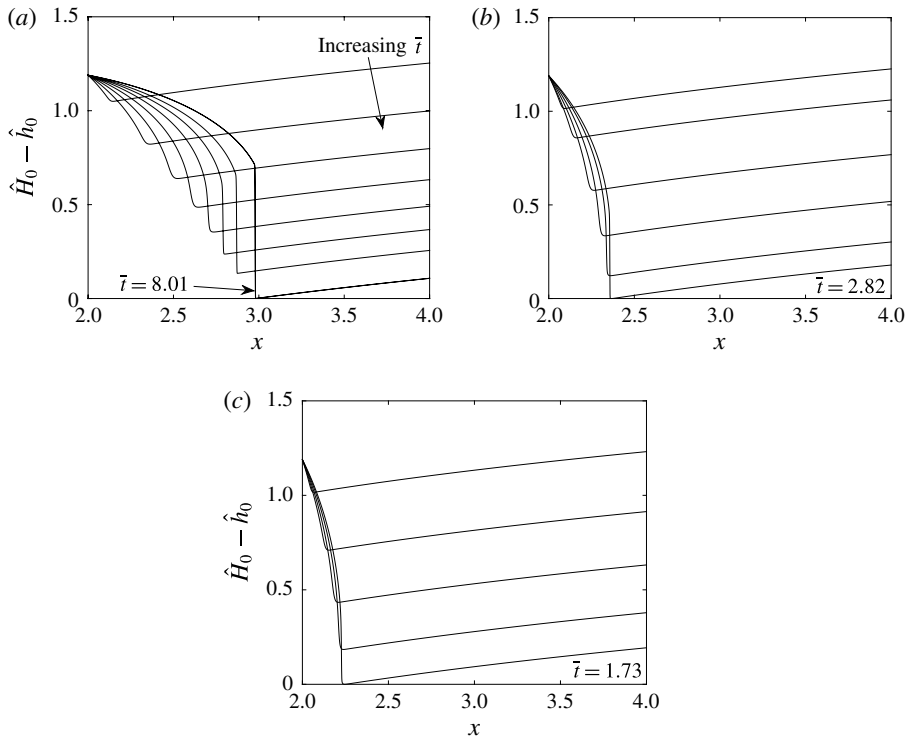


FIGURE 4. The film thickness at various times for: (a) $\alpha = 1/7$; (b) $\alpha = 1/2$; (c) $\alpha = 1$.

because the fluid in the inner region does not lose mass to the ice layer at leading order, so it is imposing the steady-state profile on the film thickness. Downstream of the discontinuity, the mass of water in the film is being rapidly reduced by freezing. Even for this relatively small value of α , there is no way that the downstream film can be replenished quickly enough to prevent the film rupturing. If we increase α further, see figure 4(b) for $\alpha = 1/2$ and figure 4(c) for $\alpha = 1$, rupture of the liquid film happens more rapidly, at $\bar{t} = 2.82$ and $\bar{t} = 1.73$ respectively. Furthermore, the rupture point is closer to the switch-off point.

We investigate the time, \bar{t}_d , and location, $x_0 + x_d$, of rupture in figure 5 for $0.05 < \alpha < 5$. As expected, increasing the strength of the heat flux in the ice layer speeds up the rupturing process, whilst also causing it to occur closer to the switch-off point, $x_0 = 2$.

Hence, we see that for large time, even when the plate temperature is only just below freezing, we expect to see rupture of the liquid film in finite time. This is in contrast to Tsao & Rothmayer (2002), whose coupled model for icing on an arbitrary airfoil shape does not see any rupture of the liquid film without accounting for local effects, such as the Gibbs–Thomson relationship between the ice–surface curvature and the freezing temperature. We see rupture here because of the competition between the incoming steady-state flux from upstream and the loss of mass to the ice layer in the film downstream. Note that our model is limited in the same sense as Nelson *et al.* (1995). If we allowed the film to be replenished by a droplet influx at the free surface, we might expect a delay of – or even a prevention of – rupture. This needs to be investigated in more detail.

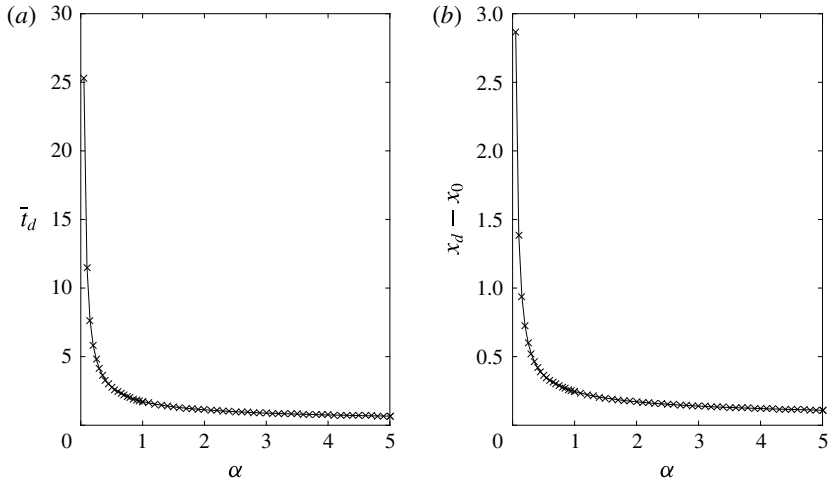


FIGURE 5. Plot of the time (a) and location (b) of rupture of the liquid film as a function of the ice heat flux strength, α .

Since the film is thinning underneath the steepening free surface, our assumption that the ice and film are of equal thickness breaks down. Moreover, the region about the shock where there is a large jump in the free surface height has a short horizontal length scale (cf. figure 4). Therefore, close to the shock we expect our model to no longer be applicable. The local solution may influence the ice growth close to the shock. We do not speculate on this local problem any further here.

The question of what happens after this film rupture occurs is also an open one. There is a large bulk of fluid upstream of the rupture, which is still freezing. We postulate that this will cause a build-up of ice upstream of the rupture, close the switch-off point. This will, in turn, cause the film to be held up and accentuate the ice growth. The ice should eventually grow to a significant enough size to induce viscous–inviscid interaction in the air and a resultant change in aerodynamics. Such a problem is likely to be very difficult to pursue either analytically or numerically, since the film terminates on the ice.

6. Discussion and summary

6.1. Applicability of the model

We have made several assumptions in our model, the most important of which are

$$\varepsilon_w Re^{1/2} \ll 1, \quad \varepsilon_w \ll Re^{-5/8}, \quad \varepsilon_w \gg Re^{-3/4}, \quad \frac{Ste}{Pe_i} = O(\varepsilon_w^3 Re^{1/2}). \quad (6.1a-d)$$

The first of these conditions demands that the film be much thinner than the aerodynamic boundary layer, the second precludes the possibility of viscous–inviscid interactions developing in the steady-state regime and the inner region, the third allows us to assume that the inner region in § 4.3 has a long, thin aspect ratio, and the final condition leads to the ice growth having a leading-order influence on the film velocity profile. The assumption that the film is thinner than the triple-deck limit is stronger than the assumption that the film lies deep inside the aerodynamic boundary layer.

Parameter	Value	Parameter	Value
L	1 m	λ_a	$2.32 \times 10^{-2} \text{ J s}^{-1} \text{ m}^{-1} \text{ K}^{-1}$
U_∞	$2.5 \times 10^2 \text{ m s}^{-1}$	λ_i	$2.18 \text{ J s}^{-1} \text{ m}^{-1} \text{ K}^{-1}$
ρ_a	1.349 kg m^{-3}	λ_w	$0.53 \text{ J s}^{-1} \text{ m}^{-1} \text{ K}^{-1}$
ρ_i	$9.17 \times 10^2 \text{ kg m}^{-3}$	c_a	$10^3 \text{ J kg}^{-1} \text{ K}^{-1}$
ρ_w	$9.98 \times 10^2 \text{ kg m}^{-3}$	c_i	$2 \times 10^3 \text{ J kg}^{-1} \text{ K}^{-1}$
μ_a	$1.61 \times 10^{-5} \text{ kg m}^{-1} \text{ s}^{-1}$	c_w	$4.25 \times 10^3 \text{ J kg}^{-1} \text{ K}^{-1}$
μ_w	$3 \times 10^{-3} \text{ kg m}^{-1} \text{ s}^{-1}$	$T_f - T_\infty$	10 K
σ	$7.7 \times 10^{-2} \text{ N m}^{-1}$	\mathcal{L}	$2.84 \times 10^6 \text{ J kg}^{-1}$

TABLE 1. Example values of some of the key parameters in the model, taken from a high-speed aerodynamic flow in which the free-stream temperature is lower than but close to the freezing temperature. The data for supercooled water are taken from Hare & Sorensen (1987), Holten *et al.* (2012), Biddle *et al.* (2013), Hrubý *et al.* (2014) and Dehaoui, Issenmann & Caupin (2015).

We have also neglected surface tension throughout our analysis. It is at its most relevant in the inner region, so that our assumption of small surface tension is equivalent to

$$\frac{1}{\varepsilon_w^7 Re^4 We} \ll 1. \quad (6.2)$$

It seems pertinent to check whether these assumptions are reasonable. We consider a generic high-speed air flow past a flat plate and without loss of generality assume that the external air flow is supercooled, i.e. colder than the freezing temperature of water. We have assumed that the steady-state plate temperature is warm enough to prevent the water from freezing at any point within the film. We summarise the parameters we use for our example in table 1.

Using these parameters,

$$Re \sim 2.09 \times 10^7, \quad Pe_i \sim 2.1 \times 10^8, \quad Ste = 7 \times 10^{-3}, \quad We = 1.1 \times 10^6. \quad (6.3a-d)$$

Therefore, the restrictions on the film thickness are

$$3.23 \times 10^{-6} \ll \ell_w \ll 2.66 \times 10^{-5}, \quad (6.4)$$

giving a range of film thicknesses over which the analysis is applicable. For the parameters in table 1, we require the film to be approximately 20 μm thick. At larger Reynolds numbers, naturally, the range is wider, allowing for thicker films. Rothmayer & Tsao (2000) note that typical supercooled droplets impacting an airfoil surface can reasonably be expected to form surface films that are 10–40 μm in thickness, so it is encouraging that (6.4) overlaps this range.

The condition on the ice growth and thickness, i.e. the fourth condition in (6.1), requires that the film thickness approximated by

$$\ell_w \sim \left(\frac{Ste}{Re^{1/2} Pe_i} \right)^{1/3}, \quad (6.5)$$

lies in the range (6.4). Using the values in (6.3) we find that $\ell_w \sim 1.01 \times 10^{-5}$, which is indeed within the bounds of (6.4). Hence our assumptions on the ice growth rate

and thickness, as well as the resulting asymptotic structure outlined in §§ 4.1 and 5.1, are reasonable.

Finally, we look at the assumption of small surface tension. Using (6.2) and (6.3), we can neglect surface tension provided that

$$\ell_w \gg 8.97 \times 10^{-6}, \quad (6.6)$$

which suggests that surface tension may be important in the inner region. However, as in general $\rho \ll 1$, our analysis will hold even if surface tension has a leading-order effect on the film pressure in the inner region.

In general, the range of acceptable film thicknesses is relatively small, so we expect one of two situations to arise in practice. For ℓ_w much larger than the range (6.4), we expect triple-deck effects to play a significant role in the model, even when the ice layer is thin. Timoshin (1997) explicitly considers this limit for the steady-state problem without icing and shows that the solution given in § 3.1 is unstable to small disturbances. There are both interfacial and Tollmien–Schlichting waves, and, in particular, the film enhances the Tollmien–Schlichting disturbances. Therefore, the perturbation to the film flow due to ice growth in our model could cause instabilities to arise if ℓ_w is sufficiently large. Moreover, in this regime, the inner region is exactly the same size as the lower deck, making the problem highly nonlinear and much less tractable.

For ℓ_w much smaller than the range (6.4), the aspect ratio of the inner region can no longer be assumed to be large, so that the full (steady) Navier–Stokes equations must be solved in the inner region. Naturally such a problem will be extremely expensive computationally.

As discussed in § 2, our assumptions that ρ , μ and λ are of order unity are not strictly true for water–air systems – indeed, by table 1, $\rho \sim 1.4 \times 10^{-3}$, $\mu = 5.4 \times 10^{-3}$ and $\lambda \sim 4.38 \times 10^{-2}$. We briefly assess how we can adapt our model to accommodate this.

In order to incorporate the small viscosity ratio into the problem, we would choose $\mu \varepsilon_w Re^{1/2}$ as the film velocity scale in order to balance the shear stress on the air–water interface. This would change the slip felt by the first-order correction to the Blasius solution (equivalent to just setting $\mu = 0$ in (4.16)) and, moreover, decouple the air and film in the inner region. There would also be slight changes to the asymptotic expansions of the other variables in § 4 to account for $\mu \ll 1$: for example the free surface profile in § 4.2 would have an expansion of the form

$$\hat{H} = \mathcal{A}_0 x^{1/4} + \varepsilon_w Re^{1/2} \hat{H}_{s1}(x) + \dots + \mu \varepsilon_w Re^{1/2} \hat{H}_1 + \dots \quad (6.7)$$

Furthermore, the appropriate time scale would now be $\tau = 1/(\mu \varepsilon_w Re^{1/2})$. However, the general structure and analysis of what we have seen in this paper would remain the same.

The small density ratio, ρ , has no major effect on our analysis, other than to diminish the role of surface tension in the inner region. The pressure terms in the inner region are $O(\rho)$, compared to the viscous term, which is of $O(\rho/\mu)$. Hence the pressure term, and therefore surface tension, has a lower-order effect on the film flow.

To consider a small thermal conductivity ratio, we can simply expand our derived expressions in asymptotic series as $\lambda \rightarrow 0$ under appropriate restrictions on the comparative size of λ and $\varepsilon_w Re^{1/2}$.

We have also neglected several physical effects in this paper. The exclusion of gravity and viscous dissipation in the two fluids was for a matter of convenience; these effects could readily be brought back into the model. However, perhaps the boldest assumption made in the derivation was that the flow parameters are independent of the fluid temperature. In aircraft icing conditions, the external air flow is typically subzero. The plate temperature, which plays the role of an anti-icing heating element, is typically very high, since these elements often make use of the bleed heat from the aircraft engines. Therefore, due to this large range of temperatures, we might expect there to be significant variation in the fluid properties. These considerations will form part of future work.

6.2. Summary

In this paper, we have modelled the freezing of a thin film situated within an aerodynamic boundary layer due to the loss of heating on part of a flat plate. Throughout, we have assumed that the liquid film is much thinner than the air boundary layer thickness. We systematically derived models for the behaviour of the flow before and after freezing.

Prior to freezing, the flow is steady, as described by the work of Nelson *et al.* (1995) and Timoshin (1997). The thermal problem is driven by the changing plate boundary condition. We looked at a specific case where the plate temperature cools sufficiently slowly that the thermal problem is quasi-steady, with time only entering through the boundary condition. Due to the change in film temperature, a sublayer develops in the air thermal boundary layer in which the temperature changes from the steady profile to the reduced film temperature. We used the Lighthill approximation on the flow variables to solve for the temperature in this sublayer analytically.

Once the plate temperature reaches the freezing temperature at time $t = t_c$, ice begins to form on the plate. We assumed throughout that the ice growth rate has a leading-order effect on the film velocity profile. We outlined two temporal regimes. When $t - t_c = O(1)$, the ice layer is thin and the temperature jump across the ice is small. Since the ice is so thin, the film thickness only changes by a small amount from its steady solution. In the second temporal regime, when $t - t_c = O(1/(\varepsilon_w Re^{1/2}))$, the ice layer is comparable to the film in thickness, which causes a leading-order variation to the steady-state solution.

When $t - t_c = O(1)$, there are three distinct asymptotic regions: an outer region where the length and velocity scales are the same as the steady-state problem; an inner region close to the switch-off point where the air and film heat fluxes balance on the free surface; and an intermediate region in which the free surface profile can be matched between the inner and outer solutions.

Upstream of the switch-off point, the outer flow is unchanged from the steady solution. In the outer region downstream of the switch-off point, since the film is much thinner than the air boundary layer, ice growth is driven purely by the heat flux from the ice layer. Hence, the height of the ice layer depends purely on the applied temperature on the plate: if the applied temperature is uniform along the plate, ice growth is uniform along the plate. Therefore, the outer region sees the ice layer as a small step on the plate. In the regime in which the film is thinner than the classical lower-deck scale, this step is not enough to trigger viscous–inviscid interaction at leading order. In the inner region, the flow solution is simply given by the local shear profile of the boundary layer solution, while the thermal problem is straightforward to solve numerically. For our specific plate temperature profile, we showed that the

ice growth rate in the inner region is proportional to $t - t_c$, with an x -dependence coming through the film heat flux evaluated on the ice surface.

The inner and outer solutions for the film thickness are matched via an intermediate region in which there is a full balance in the kinematic equation. The free surface is continuous, but not smooth, with a slope discontinuity propagating along the characteristic that emanates from the switch-off point at $t = t_c$. Upstream of the slope discontinuity, the free surface profile is driven by the steady-state flux, while downstream the free surface is driven by the mass loss due to freezing.

When $t - t_c = O(1/(\varepsilon_w Re^{1/2}))$, the characteristic along which this slope discontinuity propagates enters the outer region. Furthermore, on this time scale, the ice thickness is of the same order of magnitude as the film. We now must solve a nonlinear hyperbolic equation in the outer region for the film thickness. Matching with the small-time solution gives an initial profile that is continuous but not smooth. The slope discontinuity in the free surface is accentuated by the nonlinearity and eventually leads to shock formation. We solved the equation numerically and showed that the film can rupture in finite time. The location and speed of rupture depend strongly on the size of the applied temperature at the wall.

Naturally, since the film thins rapidly before rupture, our assumption that its thickness is of the same order of magnitude as the ice breaks down. While we have not looked in detail at what happens when this assumption breaks down, it is interesting to postulate on possible behaviours. There is a large bulk of liquid upstream of the touchdown, while downstream the film is much thinner, and is freezing rapidly. It seems likely that a bias toward ice growth will form upstream of film rupture, causing an ice hump to develop close to the switch-off point. This is akin to the ice ‘horns’ seen in runback flow on aircraft. In conditions when the surrounding air has a high liquid water content and is close to the freezing temperature, not all of the film freezes on the aircraft elements. Some water flows aft along the elements, with a localised thickening of the ice layer forming ‘horned’ or ‘beaked’ ice shapes. Whether or not we see this in our model after rupture remains to be studied.

Acknowledgements

The authors would like to acknowledge support provided by Innovate UK grant no. 113001 during the completion of this work. We would also like to thank the anonymous referees who helped improve an earlier version of this paper for their comments.

Appendix A. Justification for the Lighthill approximation

Making no assumptions about the velocity profiles, the leading-order outer problem for $\tilde{\theta}$ in § 3.2 for $x > x_0$ is

$$u_b(x, \hat{y})\tilde{\theta}_x + v_b(x, \hat{y})\tilde{\theta}_{\hat{y}} = \frac{1}{Pr}\tilde{\theta}_{\hat{y}\hat{y}}, \quad (\text{A } 1)$$

$$\tilde{\theta}(x, 0, \bar{t}) = -(\beta + \alpha)f(\bar{t}), \quad (\text{A } 2)$$

$$\tilde{\theta} \rightarrow 0 \quad \text{as } \hat{y} \rightarrow \infty, \quad (\text{A } 3)$$

$$\tilde{\theta}(0, 0, \bar{t}) = 0. \quad (\text{A } 4)$$

If we write $\tilde{\theta} = \tilde{\theta}_h + \theta^\dagger$, where $\tilde{\theta}_h = L(\zeta, \bar{t})$ is the Lighthill solution found in § 3.2,

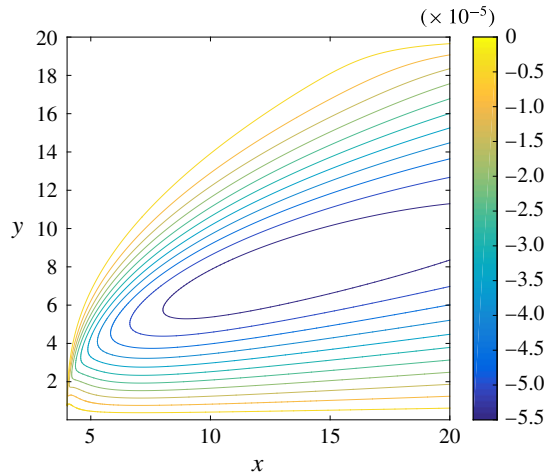


FIGURE 6. (Colour online) Numerical solution of (A5)–(A8). This contour plot depicts the difference between the full solution and the Lighthill approximation. Clearly, this difference is very small, suggesting that the approximation is valid.

the correction θ^\dagger satisfies the parabolic problem

$$u_b \theta_x^\dagger + v_b \theta_y^\dagger = \frac{\theta_{yy}^\dagger}{Pr} - \frac{3^{2/3}(\beta + \alpha)f(\bar{t})e^{-\hat{y}^3/d(x)^3/3}}{\Gamma(1/3)d(x)} \times \left(v_b - \frac{\tilde{\lambda}\hat{y}^2}{4x^{3/2}} - \frac{yd'(x)(u_b - \tilde{\lambda}\hat{y}/\sqrt{x})}{d(x)} \right), \quad (\text{A5})$$

$$\theta^\dagger(x, 0, \bar{t}) = 0, \quad (\text{A6})$$

$$\theta^\dagger \rightarrow 0 \quad \text{as } \hat{y} \rightarrow \infty, \quad (\text{A7})$$

$$\theta^\dagger(0, 0, \bar{t}) = 0. \quad (\text{A8})$$

After truncating the domain in \hat{y} by choosing a suitably large value at which to apply the far-field condition, say $\hat{y} = N$, we can solve this problem numerically. Since time is a parameter in the problem, it is sufficient to solve it at one time instant only. We select $\bar{t} = t_c/3$ without loss of generality. Moreover, the problem has homogeneous boundary conditions, so it is relatively easy to solve by marching upstream from $x = x_0$, solving a tridiagonal system in \hat{y} for each value of x . In figure 6 we plot the contours of constant θ^\dagger when the heating condition is given by (4.69). In this simulation, $\alpha = 5$, $\beta = 1.4$, $Pr = 1$, $N = 20$ and we have marched from $x = x_0 = 4$ up to $x = 20$. The grid is uniform with $\Delta x = 10^{-2}$. Clearly the difference between the full solution and the Lighthill approximation is very small, even for $\hat{y} = O(1)$. Hence, the approximation is excellent.

REFERENCES

- BIDDLE, J. W., HOLTEN, V., SENGERS, J. V. & ANISIMOV, M. A. 2013 Thermal conductivity of supercooled water. *Phys. Rev. E* **87** (4), 042302.
- DEHAOUI, A., ISSENMANN, B. & CAUPIN, F. 2015 Viscosity of deeply supercooled water and its coupling to molecular diffusion. *Proc. Natl Acad. Sci. USA* **112** (39), 12020–12025.

- ELLIOTT, J. W. & SMITH, F. T. 2017 Ice formation on a smooth or rough cold surface due to the impact of a supercooled water droplet. *J. Engng Maths* **102** (1), 35–64.
- GENT, R. W., DART, N. P. & CANSDALE, J. T. 2000 Aircraft icing. *Phil. Trans. R. Soc. Lond. A* **358** (1776), 2873–2911.
- HANSMAN, R. J., YAMAGUCHI, K., BERKOWITZ, B. & POTAPCZUK, M. 1991 Modeling of surface roughness effects on glaze ice accretion. *J. Thermophys. Heat Transfer* **5** (1), 54–60.
- HARE, D. E. & SORENSEN, C. M. 1987 The density of supercooled water. ii. Bulk samples cooled to the homogeneous nucleation limit. *J. Chem. Phys.* **87** (8), 4840–4845.
- HIGUERA, F. J. 1991 Viscous-inviscid interaction due to the freezing of a liquid flowing on a flat plate. *Phys. Fluids A* **3** (12), 2875–2886.
- HOLTEN, V., BERTRAND, C. E., ANISIMOV, M. A. & SENEGERS, J. V. 2012 Thermodynamics of supercooled water. *J. Chem. Phys.* **136** (9), 094507.
- HRUBÝ, J., VINŠ, V., MAREŠ, R., HYKL, J. & KALOVÁ, J. 2014 Surface tension of supercooled water: no inflection point down to -25°C . *J. Phys. Chem. Lett.* **5** (3), 425–428.
- JUNG, S., TIWARI, M. K., DOAN, N. V. & POULIKAKOS, D. 2012 Mechanism of supercooled droplet freezing on surfaces. *Nat. Commun.* **3**, 615.
- LIGHTHILL, M. J. 1950 Contributions to the theory of heat transfer through a laminar boundary layer. *Proc. R. Soc. Lond. A* **202**, 359–377.
- LYNCH, F. T. & KHODADOUST, A. 2001 Effects of ice accretions on aircraft aerodynamics. *Prog. Aerosp. Sci.* **37** (8), 669–767.
- MESSINGER, B. L. 1953 Equilibrium temperature of an unheated icing surface as a function of air speed. *J. Aero. Sci.* **20**, 29–42.
- MESSITER, A. F. 1970 Boundary-layer interaction theory. *Trans. ASME J. Appl. Maths* **18**, 241–257.
- MITCHELL, S. L. & MYERS, T. G. 2008 Approximate solution methods for one-dimensional solidification from an incoming fluid. *Appl. Maths Comput.* **202**, 311–326.
- MITCHELL, S. L. & MYERS, T. G. 2012 Application of heat balance integral methods to one-dimensional phase change problems. *Intl. J. Differ. Equ.* **2012**, 187902.
- MYERS, T. G. 2001 Extension to the Messinger model for aircraft icing. *AIAA J.* **39** (2), 211–218.
- MYERS, T. G. & CHARPIN, J. P. F. 2004 A mathematical model for atmospheric ice accretion and water flow on a cold surface. *Intl. J. Heat Mass Transfer* **47** (25), 5483–5500.
- MYERS, T. G., CHARPIN, J. P. F. & CHAPMAN, S. J. 2002a The flow and solidification of a thin fluid film on an arbitrary three-dimensional surface. *Phys. Fluids* **14** (8), 2788–2803.
- MYERS, T. G., CHARPIN, J. P. F. & THOMPSON, C. P. 2002b Slowly accreting ice due to supercooled water impacting on a cold surface. *Phys. Fluids* **14** (1), 240–256.
- MYERS, T. G. & HAMMOND, D. W. 1999 Ice and water film growth from incoming supercooled droplets. *Intl. J. Heat Mass Transfer* **42** (12), 2233–2242.
- NEILAND, V. Y. 1969 Towards a theory of separation of the laminar boundary layer in a supersonic stream. *Izv. Akad. Nauk SSSR Mekh. Zhidk. Gaza* **4**, 33–35.
- NELSON, J. J., ALVING, A. E. & JOSEPH, D. D. 1995 Boundary layer flow of air over water on a flat plate. *J. Fluid Mech.* **284**, 159–169.
- OLSEN, W. & WALKER, E. 1987 Experimental evidence for modifying the current physical model for ice accretion on aircraft surfaces. NASA TM 87184.
- OTTA, S. P. & ROTHMAYER, A. P. 2007 A simple boundary-layer water film model for aircraft icing. In *45th AIAA Aerospace Sciences Meeting*. AIAA.
- OTTA, S. P. & ROTHMAYER, A. P. 2009 Instability of stagnation line icing. *Comput. Fluids* **38**, 273–283.
- PELEKASIS, N. A. & TSAMOPOULOS, J. A. 2001 Linear stability of a gas boundary layer flowing past a thin liquid film over a flat plate. *J. Fluid Mech.* **436**, 321–352.
- QUERO, M., HAMMOND, D. W., PURVIS, R. & SMITH, F. T. 2006 Analysis of super-cooled water droplet impact on a thin water layer and ice growth. In *44th AIAA Aerospace Sciences Meeting*. AIAA.
- ROTHMAYER, A. P. 2003a On the creation of ice surface roughness by interfacial instabilities. In *41st AIAA Aerospace Sciences Meeting*. AIAA.

- ROTHMAYER, A. P. 2003*b* Scaling laws for water and ice layers on airfoils. In *41st AIAA Aerospace Sciences Meeting*. AIAA.
- ROTHMAYER, A. P. 2006 Stagnation point icing. In *44th AIAA Aerospace Sciences Meeting*. AIAA.
- ROTHMAYER, A. P. & TSAO, J. C. 2000 Water film runback on an airfoil surface. In *38th AIAA Aerospace Sciences Meeting*. AIAA.
- SHAPIRO, E. & TIMOSHIN, S. 2006 Linear stability of ice growth under a gravity-driven water film. *Phys. Fluids* **18** (7), 074106.
- SHAPIRO, E. & TIMOSHIN, S. 2007 On ice-induced instability in free-surface flows. *J. Fluid Mech.* **577**, 25–52.
- SMITH, F. T. 1973 Laminar flow over a small hump on a flat plate. *J. Fluid Mech.* **57** (04), 803–824.
- SMYRNAIOS, D. N., PELEKASIS, N. A. & TSAMOPOULOS, J. A. 2000 Boundary layer flow of air past solid surfaces in the presence of rainfall. *J. Fluid Mech.* **425**, 79–110.
- STEWARTSON, K. & WILLIAMS, P. G. 1969 Self-induced separation. *Proc. R. Soc. Lond. A* **312**, 181–206.
- SWEBY, P. K. 1984 High resolution schemes using flux limiters for hyperbolic conservation laws. *SIAM J. Numer. Anal.* **21** (5), 995–1011.
- THOMAS, S. K., CASSONI, R. P. & MACARTHUR, C. D. 1996 Aircraft anti-icing and de-icing techniques and modeling. *J. Aircraft* **33** (5), 841–854.
- TIMOSHIN, S. N. 1997 Instabilities in a high-Reynolds-number boundary layer on a film-coated surface. *J. Fluid Mech.* **353** (163), 163–195.
- TSAO, J. C. & ROTHMAYER, A. P. 2002 Application of triple-deck theory to the prediction of glaze ice roughness formation on an airfoil leading edge. *Comput. Fluids* **31** (8), 977–1014.
- TSAO, J.-C., ROTHMAYER, A. P. & RUBAN, A. I. 1997 Stability of air flow past thin liquid films on airfoils. *Comput. Fluids* **26** (5), 427–452.
- UENO, K. & FARZANEH, M. 2011 Linear stability analysis of ice growth under supercooled water film driven by a laminar airflow. *Phys. Fluids* **23** (4), 042103.
- VARGAS, M. 2007 Current experimental basis for modeling ice accretions on swept wings. *J. Aircraft* **44** (1), 274–290.