

Flow structure inside and around a rectangular array of rigid emerged cylinders located at the sidewall of an open channel

Mete Koken¹ and George Constantinescu^{2,†}

¹Department of Civil Engineering, Middle East Technical University, 06800, Ankara, Turkey

²Department of Civil and Environmental Engineering, The University of Iowa, Iowa, IA 52246, USA

(Received 5 April 2020; revised 19 August 2020; accepted 9 October 2020)

Flow structure inside and around a rectangular array of emerged cylinders located adjacent to the sidewall of an open channel is investigated using eddy-resolving numerical simulations. This configuration is particularly relevant for understanding how patches of aquatic vegetation developing near a river's banks affect flow and transport. The array of width $W = 1.6D$ and length $L = 33D - 35D$ (D is the flow depth) contains rigid cylinders. Simulations with incoming, fully developed turbulent flow (channel Reynolds number, $Re_D = 12\,500$) are conducted with different values of the solid volume fraction ($0.02 < \phi < 0.1$), frontal area per unit volume of the array, a ($0.41 < aW < 1.63$), diameter of the solid cylinders ($d = 0.1D$ and $0.2D$) and cylinder shape (circular and square). The paper focuses on investigating flow and turbulence structure inside and downstream of the array and the role played by coherent structures (e.g. vortices forming in the horizontal shear layer at the lateral face of the array, vortices shed in the wake of the solid cylinders) in sediment entrainment and transport. Simulation results show that significant upwelling and downwelling motions are generated near the front and lateral faces of the array and inside the shear layer. Moreover, some distance from the front face of the array, the shear layer vortices generate successive regions of high and low streamwise velocity inside the patch. The frequency associated with these wave-like oscillations is approximately half of the frequency associated with the advection of vortices in the downstream part of the shear layer. These streamwise velocity oscillations induce spanwise patches of high and low bed friction velocity that extend over the regions occupied by the array and the horizontal shear layer. For sufficiently high array resistance, horseshoe vortices form around the upstream corner of the array and provide an additional mechanism for sediment entrainment. For $aW > 0.5$, mean-flow recirculation bubbles form behind the array. For constant aW , the total size of the region containing recirculation bubbles decreases with increasing d/D . Simulation results are used to quantify the effect of varying ϕ , aW , d/D and the cylinders' shape on the streamwise decay of the mean streamwise velocity inside the array, turbulent kinetic energy distribution, mean streamwise drag forces acting on the cylinders and mean streamwise drag coefficients.

Key words: river dynamics, sediment transport, shallow water flows

† Email address for correspondence: sconstan@engineering.uiowa.edu

1. Introduction

Information on flow and turbulence structure inside and around a porous region placed in an open-channel flow is relevant for understanding flow structure and sediment erosion/deposition processes in rivers, estuaries and coastal regions containing aquatic canopies (Raupach, Finnigan & Brunnet 1996; Nepf 2012). Finite-size patches of emerged and/or submerged aquatic vegetation are a common feature of many rivers (Carr, Duthie & Taylor 1997; Sukhodolov & Sukhodolova 2010). The incoming open-channel flow is unidirectional and the flow conditions are fairly shallow, meaning bed friction affects the dynamics of large-scale turbulence (e.g. eddies generated in the shear layers forming on the edges of the patch or in its wake). Patches of vegetation have a significant impact on river ecology as plants remove nutrients from the incoming flow, release oxygen, enhance retention of organic matter and trap heavy metals, thus improving water quality (Bennett, Pirim & Barkdoll 2002; Schultz *et al.* 2003; Simon, Bennett & Neary 2004; Bennett *et al.* 2008; Chen *et al.* 2012; Gurnell 2014; Sukhodolov & Sukhodolova 2014). The region of reduced flow velocity inside and immediately downstream of the patch provides high-quality habitat for several species of fish and promotes sediment deposition while impeding resuspension of sediments (Sand-Jensen 1998; Schultz *et al.* 2003; Follett & Nepf 2012). On the other hand, the regions of high flow acceleration forming on the sides of the patch, the downflow parallel to the upstream face of the patch, the large-scale eddies generated inside the shear layers and in the wake of the patch promote sediment entrainment and bed scouring around and inside the patch (Follett & Nepf 2012; Tinoco & Coco 2016; Yang, Chung & Nepf 2016). Although vegetation patches are often characterized by height and volume heterogeneity (Hamed *et al.* 2017), most of the laboratory and numerical studies that investigated flow and turbulence structure around idealized patches of vegetation focused on the case when the patch porosity is close to uniform and used solid rigid cylinders as a surrogate for the plant stems (White & Nepf 2007; Liu *et al.* 2008; Stoesser, Kim & Diplas 2010; Chang, Constantinescu & Tsai 2017; Monti, Omidyeganeh & Pinelli 2019).

Lots of previous research focused on the case when a patch of natural vegetation or an array of cylinders is situated away from the channel's banks (Rominger & Nepf 2011; Chen *et al.* 2012; Follett & Nepf 2012; Zong & Nepf 2012; Chang *et al.* 2017). Patches of natural vegetation also develop close to the river's banks. As these patches tend to be much longer than their average width, most of the fundamental research focused on the canonical case of a long rectangular array of solid emerged cylinders placed in an open channel (White & Nepf 2007; Zhong & Nepf 2010, 2011). The main goal of these studies was to describe the mean flow and turbulence inside the shear layer flow at the lateral boundary of the rectangular patch and inside the adjacent array region, and the spatial patterns of sediment deposition inside and around the patch. In terms of the shear layer generated at the interface between a porous region and a (free-stream) region containing no obstructions (e.g. no plant stems), another relevant problem is the one in which a submerged porous region is present at the bottom of an open channel. In this case, the (vertical) shear layer flow develops in a vertical plane and the flow velocity is non-zero at the top (free surface) boundary, but the physics of the shear layer flow is very similar to that of the (horizontal) shear layer forming in between an emerged porous region placed at one side of the channel and the free-stream region at the other side of the channel (Ghisalberti & Nepf 2002). Sukhodolova & Sukhodolov (2012*a,b*) present a theoretical analysis of the spatially developing shear (mixing) layer flow developing at the top of a submerged porous layer.

If plant flexibility is neglected, porous regions of uniform solid volume fraction located in a channel or in a boundary layer can be modelled as arrays of vertical solid cylinders.

For both horizontal and vertical shear layers, the incoming flow diverted by a rectangular array placed at one of the channel sidewalls accelerates near the upstream corner of the array, while the flow penetrating inside the array decelerates due to the drag induced by the cylinders. As part of the incoming flow is deflected toward the free-stream side of the channel, the same is true for part of the flow entering the array through its front face that is diverted toward the lateral sides of the array and exits the array over a relatively short distance. This upstream region is sometimes called the diverging flow region (Nepf & Vinoni 2000; White & Nepf 2007). The drag induced by the cylinders reduces the streamwise velocity inside the array compared to the approaching flow velocity.

The mean shear between the array and the adjacent free-stream region generates a spatially developing shear layer containing large-scale turbulent eddies generated via the Kelvin–Helmholtz instability (Finnigan 2000; Nezu & Onitsuka 2000; White & Nepf 2007). The large-scale vortices partially penetrate inside the array. Some distance from the front of the array, the penetration distance is expected to become constant for sufficiently large arrays (Ghisalberti & Nepf 2004; Rominger & Nepf 2011; Zong & Nepf 2012; Sukhodolova & Sukhodolov 2012a). The lateral penetration distance of the vortices, δ_v , was shown to be inversely proportional to the resistance due to the cylinders forming the array, $(C_d a)^{-1}$, where a is the frontal area per unit volume of the array and C_d is a mean drag coefficient for the cylinders defined with a velocity scale representative of the mean (streamwise) velocity inside the array (White & Nepf 2007). Except for very small values of $C_d a$, the cores of the shear layer eddies penetrate only partially inside the array. In the case of an array placed in a shallow open channel, the spatial development of the horizontal shear/mixing layer is expected to be affected by bed friction once the size of the vortices becomes comparable with the channel depth (Chu & Babarutsi 1988; Cheng & Constantinescu 2020). For long arrays, this leads to a stabilization of the layer growth (e.g. close to constant width) at large distances from its origin (Finnigan 2000; Ghisalberti & Nepf 2004; Sukhodolov & Sukhodolova 2012a).

The present study proposes a numerical approach based on large eddy simulation (LES) techniques to investigate the physics of flows past a long array of vegetation developing at one side of an open channel. Together with Reynolds-averaged Navier–Stokes (RANS) models, LES and hybrid RANS-LES models have been widely used in the past to investigate flow in vegetated channels, especially for cases where rigid cylinders/plant stems were present over the entire channel bed region. Most of these RANS (e.g. see Naot, Nezu & Nakagawa 1996; Lopez & Garcia 2001; Neary 2003; Nicholas & McLelland 2004; Defina & Bixio 2005; Maza, Lara & Losada 2015) and LES simulations (e.g. see Cui & Neary 2002; Okamoto & Nezu 2010; Yan *et al.* 2017) did not resolve the flow past the individual plant stems and thus required a vegetation closure model. Such models include extra drag terms added to the momentum equations and extra source terms in the transport equations for the turbulent variables (e.g. King, Tinoco & Cowen 2012; Marjoribanks *et al.* 2016). More accurate approaches resolve the flow past the individual rigid cylinders/plant stems in the array/patch by using conformal grids or an immersed boundary method. Such models do not need modifications of the turbulent model equations when applied to predict vegetated flows but are computationally much more expensive. Such a RANS-based approach was used by Maza *et al.* (2015) to investigate the interaction of a tsunami wave with a mangrove forest. Examples of LES investigations of open-channel flow with a vegetated layer covering the whole channel bottom include Stoesser *et al.* (2010), Kim & Stoesser (2011) and Monti *et al.* (2019, 2020). A similar approach that resolves the flow past the individual cylinders was used by Huai, Xue & Qian (2015), Chang *et al.* (2017) and Chang, Constantinescu & Tsai (2020) to study flow past emerged and submerged patches of vegetation containing rigid plant stems.

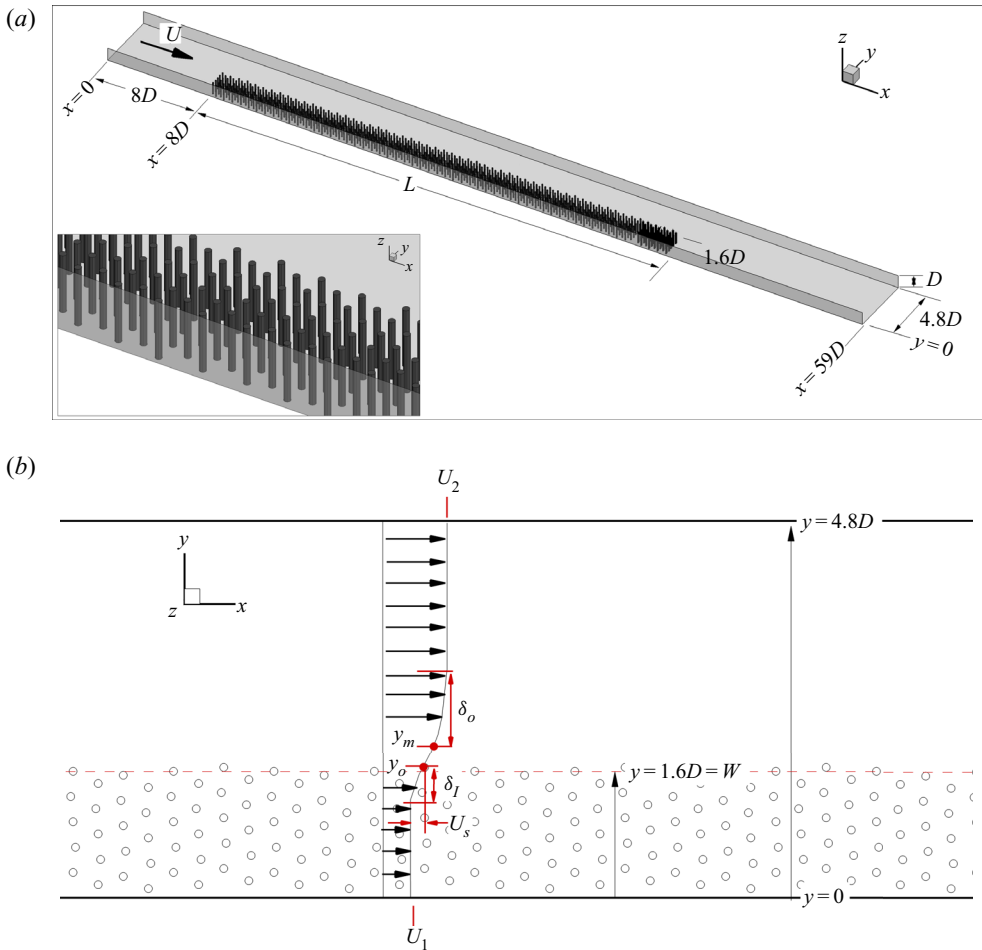


FIGURE 1. Set-up of the numerical simulations and main variables used in the analysis. (a) Sketch showing computational domain containing a rectangular array of emerged, solid cylinders of diameter d at its right bank. The flow depth in the open channel is D and the incoming mean channel velocity is U . (b) Sketch showing the mean streamwise velocity across the channel with the inner and outer layers. Their widths are δ_I and δ_o and their origins are situated at $y = y_m$ and $y = y_o$, respectively. Also shown are the velocities outside of the inner and outer layers, U_1 and U_2 , and the slip velocity $U_s = \bar{u}(y_o) - U_1$.

The geometrical set-up of the present study (figure 1a) is similar to that used in the experiments of White & Nepf (2007). A rectangular porous region of length L and width W containing close-to-uniformly distributed emergent rigid cylinders of constant diameter, d , is placed in a straight open channel of depth, D , with fully developed turbulent incoming flow. The main geometrical parameters that affect the flow are the array's solid volume fraction, ϕ , and the non-dimensional frontal area per unit volume, ad or aW . Additional parameters that affect the flow are the shape of the solid cylinders and their relative size, d/W , the relative width of the patch, W/D , and the arrangement of the cylinders in the array.

As the flow past the individual cylinders forming the array is resolved, the present three-dimensional (3-D) simulations allow us to directly estimate the mean flow and

turbulent kinetic energy (TKE) inside the array and the momentum exchange at the lateral face of the array. Moreover, most of the measurements reported in experimental studies of these flows were performed at mid-depth as an approximation for the depth-averaged flow. Thus, not much information is available from prior experimental studies on the vertical non-uniformity of the flow and on the magnitude of the dispersive momentum fluxes inside and around the rectangular array.

A general feature of flow past a finite patch of emerged vegetation situated at one side of a natural channel is the formation of a downflow near the upstream side of the patch that partially penetrates inside the patch and generates regions of near-bed flow acceleration and large-scale coherent structures around and inside the array. Moreover, the downflow may generate strong 3-D effects, that may affect the dynamics of the interfacial shear layer. Vertical transport by the mean flow and high vertical turbulent fluctuations affect the distribution of nutrients inside the patch and their deposition patterns (e.g. the availability of nutrient-rich soil to the plant roots) and may inhibit sediment trapping via vertical accretion inside the patch even in regions of low mean velocities. Such 3-D effects were not investigated in previous studies.

In the case of patches of vegetation, sediment erosion generated by horizontal shear layer vortices, horseshoe vortices forming at the base of the leading face of the patch and/or around the plant stems directly exposed to the incoming flow can generate local scour, which may lead to dislocation of the plant stems at the front and lateral edges of the patch by the flow. On the other hand, regions inside the patch characterized by the low mean drag forces acting on the plant stems and low bed shear stresses favour sediment deposition and increase plant stability. The role of coherent structures in sediment erosion and deposition processes and the mechanisms that lead to the amplification of the bed shear stress around and inside the array have received little attention in previous studies. The same is true for the structure and extent of the wake downstream of the array which is an important region for vegetated patches as the formation of deposition-favourable regions near the back of the patch favours the accumulation of organic matter (e.g. nutrients) and the growth of the patch around its back face (Sand-Jensen & Madsen 1992). The availability of full 3-D instantaneous and mean flow fields from the simulations allows to accurately describe the position, strength and spatial extent of the different flow regions and coherent structures playing an important role in momentum flux transfer and sediment entrainment and the spatial distribution of the drag forces acting on the cylinders forming the array. Information on the drag forces acting on the cylinders/plant stems in the array is seldom available from experimental studies but is important to understand the behaviour of vegetated canopies (Sarsu *et al.* 2016) and to obtain rules to approximatively estimate drag coefficients needed in numerical models that do not resolve the individual cylinders/plant stems.

Although the structure of the shear layer forming at the interface between the rectangular array and the free-flow region was investigated mostly based on measurements and flow visualizations in two-dimensional (2-D) horizontal planes, 3-D effects (generation of upwelling and downwelling motions inside the horizontal shear layer and the surrounding region, generation of strong dispersive fluxes in a flow that is generally treated as being quasi-2-D) have not been investigated. The present paper will show that such effects are important and that the passage of the shear layer vortices generates oscillatory motions that extend outside of the shear layer region (e.g. inside the array). In this regard, the paper contributes to the fundamental understanding of the structure of open-channel shear/mixing layers forming at the interface between a porous region occupying the whole channel depth and the adjacent free-stream region for the case the interface is approximatively aligned with the mean channel flow.

Specific objectives are to understand how the main geometrical parameters of the array (e.g. ϕ , aW , d , cylinder shape) affect: (i) the distributions of the mean streamwise velocity, TKE and bed shear stresses inside the array and adjacent free-flow region; (ii) the characteristics of the vortices generated inside the horizontal shear layer, the associated amplification of the TKE and the capacity of the shear layer to induce large bed shear velocities; (iii) the position and size of the regions of separated flows in the wake of the patch; (iv) the distribution of the regions of flow upwelling and downwelling inside and adjacent to the array and the magnitude of the dispersive fluxes; (v) the drag forces acting on the cylinders.

Section 2 presents a brief description the numerical method and the main flow and geometrical parameters of the test cases. Section 3 shows that present numerical predictions of the velocity and shear stress profiles are close to those obtained from experiments conducted with fairly similar flow and geometrical conditions. Section 4 discusses how the main geometrical parameters of the array affect flow structure and TKE inside the patch, the horizontal shear layer and the wake of the patch. Section 5 discusses vertical momentum exchange and the importance of the dispersive fluxes. Section 6 uses information on the bed friction velocity distributions and large-scale coherent structures to discuss sediment erosion and deposition mechanisms inside and to evaluate the effects of the main geometrical parameters describing the array on the sediment entrainment capacity of the flow. Section 7 discusses how aW , ϕ and the relative cylinder diameter affect the streamwise variation of the mean (width-averaged) drag force acting on the cylinders and shows that the drag coefficients for the cylinders are a function of both the cylinder Reynolds number and the density of the array. Section 8 reviews the main results and presents some final conclusions.

2. Numerical model and test cases

The numerical model (Chang, Constantinescu & Park 2007) solves the incompressible Navier–Stokes equations and uses detached eddy simulation (DES) to account for the effect of the unresolved scales on the resolved energetically important eddies in the flow. The Spalart–Allmaras model that solves a transport equation for the modified eddy viscosity, $\tilde{\nu}$, is used as the base RANS model. As customary in DES, the turbulence length scale is redefined away from the solid surfaces, where it becomes proportional to the cell size, similar to classical large eddy simulation. The standard value of the model constant ($C_{DES} = 0.65$) was used to control the switch from RANS mode to LES mode. The simulations were performed using the Delayed version of DES (Spalart 2009) that preserves the RANS mode inside the attached boundary layers. The governing equations are transformed to generalized curvilinear coordinates on a non-staggered grid and integrated in time using a fully implicit fractional-step method. The convective terms in the momentum equations are discretized using a blend of fifth-order accurate upwind-biased scheme and second-order central scheme. The second-order upwind scheme is used to discretize the convective terms in the equation solved for $\tilde{\nu}$. At the solid boundaries, $\tilde{\nu}$ is set equal to zero. All other terms in the governing equations are discretized using second-order central differences. The discrete momentum (predictor step) and turbulence model equations are integrated in pseudo-time using an alternate-direction-implicit approximate factorization scheme.

The numerical model was extensively validated based on comparison with experimental data and data from well-resolved LES. Such validation studies include flow past isolated surface-mounted circular and rectangular cylinders as well as flow past rectangular obstructions placed at one side of an open channel (Koken & Constantinescu 2009; Kirkil

& Constantinescu 2015). The numerical model was found to accurately predict the mean flow and turbulence statistics inside the wake region and the horseshoe vortex system forming around the front face of the surface-mounted obstruction. The numerical model was also found to accurately predict the spatial development of shallow mixing layers forming in open-channel flows and the characteristics of the mixing layer vortices (e.g. size, shape, non-dimensional passage frequency) over the initial regime and over the quasi-equilibrium regime where the mixing layer undergoes stabilization due to the effect of bed friction on the mixing layer vortices (Cheng & Constantinescu 2020). Directly relevant for the present investigation, the numerical model was validated for flow past an emerged circular array of solid cylinders by Chang *et al.* (2017) using the experimental data of Zong & Nepf (2011).

The computational domain is shown in figure 1. The present numerical study considers rectangular arrays with $L/W \gg 1$ and $L/D \gg 1$ corresponding to a long rectangular porous region with moderately shallow flow conditions. The values of the main variables in the simulations are summarized in table 1. Simulations were performed with varying ϕ , aW , d/D and cylinder cross-section (circular and square) but with constant W/D . The bed is located at $z = 0$ and the free surface at $z = D$. The origin of the system of coordinates is located at the inlet section ($x/D = 0$) such that $y/D = 0$ at the sidewall containing the array. The width of the open channel is $4.8D$, the channel length is $59D$ and the array starts at $x/D = 8$. The length of the array is $L/D = 33\text{--}35$, its width is $W/D = 1.6$ and the channel Reynolds number defined with the mean incoming flow velocity U is $Re_D = UD/\nu \approx 12\,000$, where ν is the kinematic viscosity. The solid cylinder Reynolds number, $Re_d = Ud/\nu$ is larger than the threshold value ($Re_d \approx 120$) required for generation of vortex shedding in the wakes of the cylinders situated close to the front and lateral faces of the array. The solid cylinders forming the array were placed using a close-to-regular staggered pattern in the x - y planes, using the randomization procedure employed by Chang & Constantinescu (2015) and Chang *et al.* (2017) to reduce the regularity of the wake-to-cylinder interactions. A random displacement of $0.05D\text{--}0.1D$ was applied to the horizontal position of the solid cylinders on top of the regular staggered pattern. Moreover, such an arrangement is closer to that of the plant stems inside patches of natural vegetation (Maza *et al.* 2015).

The solid volume fraction is defined as the ratio between the total volume of the N solid cylinders forming the array and the volume of the array. In the case of circular cylinders, $\phi = N\pi d^2/4(WL)$, while for rectangular cylinders $\phi = Nd^2/(WL)$. In the present study, the solid volume fraction, ϕ , is varied between 0.02 and 0.1 mainly by increasing the number of cylinders per unit area. The paper discusses cases with $\phi < 0.1$, which is the range expected for patches of vegetations growing on floodplains and wetlands. For example, for marsh emerged grasses $0.001 < \phi < 0.02$, while for most vegetation growing in rivers $0.05 < \phi < 0.1$ (Leonard & Luther 1995; Ciraolo, Ferreri & LaLoggia 2006; Zong & Nepf 2010, 2011). The corresponding range for the non-dimensional frontal area in the present simulations is $0.255 < aD < 1.02$, where $aD = N(d/D)/(WL/D^2)$. The ranges for ad and aW are $0.026 < ad < 0.102$ and $0.408 < aW < 1.6$. The total drag force acting on the array is expected to scale with $1/a$. The other relevant (non-dimensional) length scale is d/W . The main characteristics of the mean flow and turbulence inside the array (e.g. the wake-to-cylinder interactions) are expected to depend mainly on ϕ . To illustrate the separate effects of these two main parameters characterizing the density of the array region, the matrix of simulations in table 1 considers cases with same aW but with different ϕ and also cases with same ϕ but with different aW .

In the present simulations, the horizontal mesh contained close to 1.5 million cells and 48 points were used to resolve the flow in the vertical direction. The mesh was refined inside the array and in the region containing the horizontal shear layer. In the vertical

	Case				
	0.02	0.04	0.08	0.08	0.1 (SC)
ϕ	0.02	0.04	0.08	0.08	0.1 (SC)
N	140	280	560	140	528
d/D	0.1	0.1	0.1	0.2	0.1
d/W	0.0625	0.0625	0.0625	0.125	0.0625
Re_D	12 500	12 500	12 500	12 500	12 500
Re_d	1250	1250	1250	2500	1250
W/D	1.6	1.6	1.6	1.6	1.6
L/D	35	35	35	35	33
aD	0.255	0.51	1.02	0.51	1
aW	0.408	0.814	1.630	0.814	1.6
ad	0.026	0.051	0.102	0.102	0.1
St_{SL}	0.13	0.17	0.19	0.24	0.29
St_{array}	0.07	0.09	0.10	0.12	0.14
λ/D	7.9	5.8	5.95	4.6	3.9
U_1/U	0.25	0.13	0.07	0.18	0.06
U_2/U	1.66	1.76	1.81	1.85	1.77
L_s/D	—	2.0	1.5	4.0	1.0
L_{sep}/D	—	14.0	12.5	6.0	12.0

TABLE 1. Main geometrical and flow variables of the test cases (ϕ is the solid volume fraction of the array, *SC* refers to a simulation conducted with square cylinders, N is the number of cylinders in the array, d is diameter/width of the circular/square cylinders, D is the flow depth, W is the width array, L is the length of the array, $Re_D = UD/\nu$, $Re_d = Ud/\nu$, a is the frontal area per unit volume for the array, St_{SL} is the Strouhal number defined with U and D corresponding to the most energetic frequency in the downstream part of the shear layer, St_{array} is the Strouhal number corresponding to the wave-like oscillations of the streamwise velocity inside the downstream part of the array, λ is the wavelength of the shear layer vortices in the downstream part of the shear layer, U_1 and U_2 are the mean streamwise velocities in the inner-layer region inside the array and in the free stream, outside of the shear layer, respectively, at streamwise locations where the shear layer width is close to constant, L_s is the distance from the back of the array where the flow separates, L_{sep} is the length over which recirculation bubbles are present in the wake of the array).

direction, the mesh was refined close to the channel bed where the first point off the bed was situated at $0.0015D$. The same wall normal grid spacing was used near the channel sidewalls. In non-dimensional wall units ($Re_D \approx 12\,000$), the first point off the smooth channel bed and the smooth sidewalls was situated at approximately one wall unit and at least two points were placed inside the viscous sublayer such that the use of wall functions was avoided. Close to the free surface, the vertical grid spacing was close to $0.027D$. The average grid spacing in the horizontal direction inside the array was close to $0.017D$ away from the surface of the solid cylinders. Close to the surface of the cylinders, the wall normal grid spacing was close to $0.0025D$ ($= 0.025d$ for $d/D = 1$). Close to 32 grid points were placed on the circumference of each solid cylinder. When expressed in non-dimensional wall units, the average size of the cells inside the array and the shear layer regions in the present simulations were finer than those in the circular array simulations ($Re = 67\,000$) discussed by Chang *et al.* (2017, 2020). The same studies discuss the minimum mesh density needed to obtain grid independent solutions. These findings were used when meshing the computational domain in the rectangular array simulations

discussed in the present paper. Additionally, a simulation was run for an isolated long circular cylinder at $Re_d = 480$, which is representative of the physical Reynolds number for the cylinders situated away from the front face of the array. The horizontal mesh resolution around the cylinder and the wall normal grid spacing near its surface were similar to the ones used for the cylinders forming the array region. The predicted mean streamwise drag coefficient was 1.22, which is close to the value (1.2) inferred from experiments (Munson *et al.* 2012). The predicted wake shedding Strouhal number defined with the diameter of the cylinder and the incoming velocity was 0.208, very close to the experimental value (≈ 0.21) reported at similar cylinder Reynolds numbers (Zdravkovich 1997).

The set-up of the present numerical simulations and ranges of the main non-dimensional variables are similar but not identical to those in the experiments reported by White & Nepf (2007) and Zong & Nepf (2011) that were conducted with circular cylinders of smaller diameter. The parameters of the numerical test cases were chosen such that the simulations can be conducted with reasonably high computational resources while being able to investigate the changes in the flow as only one of the main non-dimensional parameters was varied (e.g. effect of varying ϕ while keeping aD and aW constant, effect of varying aD and aW while keeping ϕ constant, effect of the shape of the cylinders while keeping aW and aD constant). In particular, the range used for the solid volume fraction ($0.02 < \phi < 0.1$) and the ratio between the width of the patch and the width of the channel were the same in the present numerical study and the aforementioned experiments. The experimental ranges of ad ($0.024 < ad < 0.12$) and Re_D ($6000 < Re_D < 28\,000$) were quite close to those of the present simulations (table 1). Given the smaller values of d/D and W/D in the experiments ($0.046 < d/D < 0.1$, $3 < W/D < 6.6$) compared to the present simulations ($0.1 < d/D < 0.2$, $W/D = 1.6$), larger differences are observed for the ranges of aW and aD between experiments ($1.6 < aW < 8.4$, $0.52 < aD < 2.8$) and simulations ($0.408 < aW < 1.6$, $0.255 < aD < 1.02$).

As for previous applications of this code to predict flow in open channels containing arrays of cylinders (Chang *et al.* 2017, 2020), the velocity fields at the inflow section were obtained from precursor simulations performed in a straight channel (height $1D$, length $16D$, width $4.8D$) with periodic boundary conditions in the streamwise direction. The free surface was modelled as a shear-free rigid lid with zero vertical velocity. A convective boundary condition was used at the outlet section of the domain containing the array. The channel bed, the sidewalls and the surfaces of the solid cylinders were treated as no-slip smooth walls. The time step ($\Delta t = 0.001D/U$) was sufficiently low to resolve the energetic frequencies associated with vortex shedding in the wake of the solid cylinders (e.g. one shedding cycle was resolved with close to 500 time steps for the cylinders that are shedding) and with the formation of vortical eddies inside the upstream part of the horizontal shear layer. Preliminary simulations showed that a distance of $8D$ between inlet boundary and the front face of the array was sufficient for the adverse pressure gradients generated by arrays with $\phi \leq 0.1$ to become negligible close to the inflow section. Mean-flow and turbulence statistics were collected over a time interval of about $200D/U$.

The findings of the present study should be interpreted with care before being used to make predictions for flow in natural channels containing long patches of vegetation at one of their banks. Similar to laboratory investigations of the same flows, the incoming flow was turbulent, but the channel Reynolds number was much smaller compared to typical field Reynolds numbers in rivers. The same was true for the cylinder Reynolds number, which obviously induces some differences in the eddy content and turbulence characteristics inside and outside the array. Simulations were conducted in a straight channel with a horizontal, smooth bed, while in the field the channel bed is deformed and the bed is rough. The plant stems were modelled as rigid cylinders, so the plant

flexibility and the associated two-way coupling between the flow and the vegetation were ignored. The cylinders were close to uniformly distributed inside the array and of constant diameter, while in natural patches of vegetation the solid volume fraction of the vegetated patch presents some level on non-uniformity and the diameters of the plant stems are not constant.

Still, this simplified geometrical set-up can be used to provide a fundamental understanding of the dynamics and structure of the shear layer forming at the interface between an elongated patch of vegetation and the free-stream region for cases when the lateral face of the patch is approximately aligned with the main flow direction in the channel. The formation of a downflow which induces strong 3-D effects around and inside the upstream part of the array is also a general feature of flows past finite-size patches of vegetation in natural channels where the large-scale structures generated by the downflow (e.g. near-bed region of flow acceleration, horseshoe vortices around the upstream face of the patch or around the base of the plant stems directly exposed to the flow) drive the local scour developing next to and inside the front part of the vegetation patch. Moreover, this simplified set-up can be used as a canonical case with respect to which additional relevant effects can be investigated (e.g. plant stem flexibility, non-uniformity of the solid volume fraction inside the array, shape of the front side of the array). The present configuration also serves as a limiting case for studying flow past submerged patches of vegetation located at the side of an open channel where a shear layer flow develops not only at the lateral face of the patch but also over its top face.

3. Comparison with experimental data

Simulation results show that the shear layer development is qualitatively similar to that observed experimentally by White & Nepf (2007). For all simulations, an initial region is present where the shear layer vortices penetrate more inside the array with increasing distance from the leading edge (e.g. see discussion of figure 5). White & Nepf (2007) have shown that the constraint imposed by the finite width and depth of the channel in which the shear layer develops, leads to a clear reduction of the rate of growth of the shear layer width on the free-stream side and to a close to constant lateral penetration width of the shear layer vortices on the array side at large distances from the shear layer origin. Such an evolution toward a constant-width shear layer is similar to that in a classical shallow mixing layer (Sukhodolova & Sukhodolov 2012a; Constantinescu 2014).

Once stabilization effects become important, the inflection point in the velocity profile situated at $y = y_0$ (figure 1b) moves very close to the lateral face of the array ($y = W = 1.6D$). White & Nepf (2007) have shown that the shear layer velocity profile is asymmetric and has a two-layer structure. The outer region on the free-stream side resembles a boundary layer, while the inner region of the shear layer contains a velocity inflection point. The maximum Reynolds stress, $-(\overline{u'v'})_{max}$, occurs at $y = y_0$ over the downstream part of the shear layer. In a good approximation, the interfacial shear stress can be estimated as $u_*^2 = -(\overline{u'v'})_{max}$. The length scale for the penetration of the shear layer vortices δ_l can be calculated as the distance from the inflection point where the mean streamwise inside the array becomes close to constant ($\bar{u}(y) = U_1$, where U_1 is the inner-layer mean velocity) in the transverse direction (figure 1b). This distance can be estimated by fitting a hyperbolic tangent profile to the simulated/measured profile in the $y < y_0$ region (Raupach *et al.* 1996; White & Nepf 2007). For the outer region, White & Nepf (2007) proposed a boundary layer analogy to scale the velocity profile. They have shown that the width of the outer region, δ_0 , is proportional to the ratio between the flow depth, D , and the bed friction coefficient. They defined an effective boundary layer

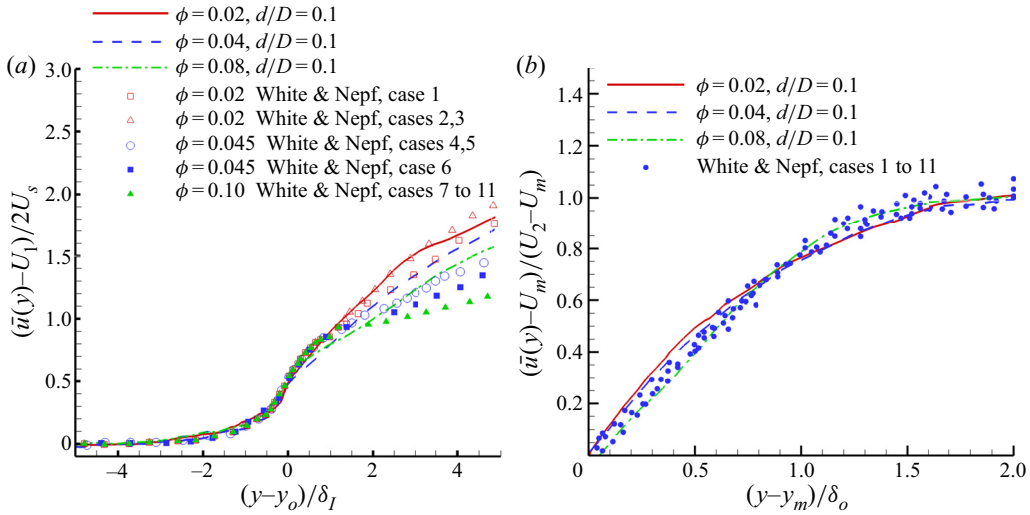


FIGURE 2. Non-dimensional spanwise profiles of the mean streamwise velocity at $z = D/2$ and $x = 37.5D$ in the simulations with $0.02 < \phi < 0.08$ and circular cylinders ($d/D = 0.1$). (a) Inner-layer scaling; (b) outer-layer scaling. Also shown are the experimental data (cases 1 to 11) from the experiments of White & Nepf (2007) conducted with $0.02 < \phi < 0.1$ and $0.09 < d/D < 0.22$.

origin ($y = y_m$ where $\bar{u}(y_m) = U_m$, figure 1b) as the lateral distance at which the inner- and outer-layer slopes of the velocity profiles match. The outer-layer length scale defines the distance away from the patch where $\bar{u}(y)$ approaches the mean free-stream velocity outside the shear layer, U_2 . Following White & Nepf (2007), this length scale is estimated as $\delta_o = (U_2 - U_m) / (d\bar{u}/dy)_{y=y_m}$. In principle, the inner and outer-layer variables should be calculated using the depth-averaged velocity profiles that are readily available from simulations. However, to allow a more direct comparison with the experiments of White & Nepf (2007), the predicted non-dimensional velocity and Reynolds shear stress profiles at mid-flow depth ($z = D/2$) were plotted in figures 2 and 3 for the simulations conducted with circular cylinders of constant diameter ($d/D = 0.1$).

Figure 2 compares the predicted non-dimensional mean velocity profiles at $x/D = 37.5$, where simulation results show that the rate of growth of the shear layer width is close to zero ($\phi \geq 0.04$) or relatively small ($\phi = 0.02$). Also plotted are the measured profiles from the experiments of White & Nepf (2007) conducted with $0.02 < \phi < 0.1$ and $0.09 < d/D < 0.22$. Despite some differences in the geometrical variables defining the array in the simulations and experiments, the level of agreement is good. Inside the inner layer (figure 2a), the predicted profiles of the rescaled velocity $(\bar{u} - U_1) / 2U_s$ versus the inner-layer coordinate, $(y - y_o) / \delta_I$, show very good agreement with the experimental measurements, where $U_s = U(y_o) - U_1$. Inside the free-stream region, both simulations and experiments predict a decrease of the rate of growth of the rescaled velocity with increasing ϕ , but the effect is larger in the experiments. Inside the outer layer, the predicted profiles of the rescaled velocity $(\bar{u} - U_m) / (U_2 - U_m)$ versus the outer-layer coordinate, $(y - y_m) / \delta_o$, are in good agreement with the measured profiles. The best agreement is observed for $\phi = 0.08$.

Similar to the approach used for the mean streamwise velocity profiles, figure 3 shows the normalized Reynolds stress profiles, $(\bar{u}'v') / u_*^2$, in inner- and outer-layer coordinates.

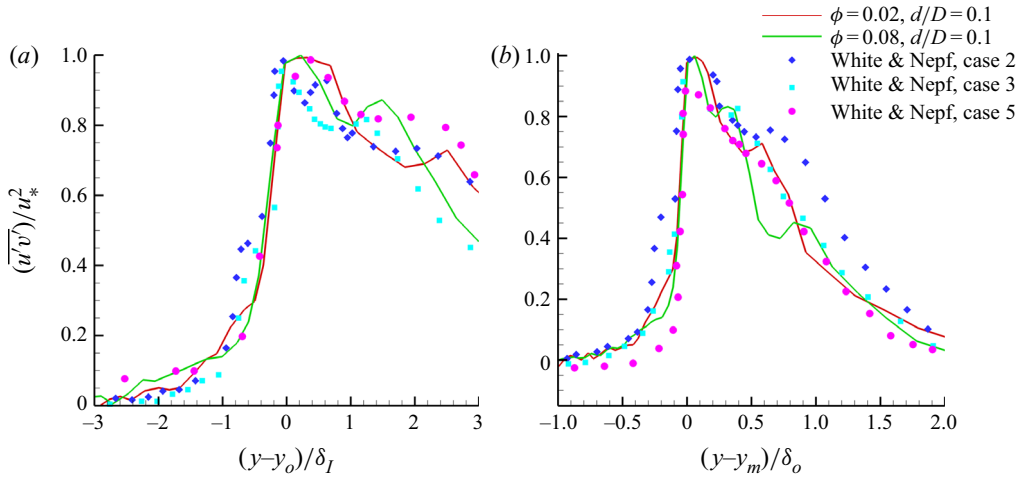


FIGURE 3. Non-dimensional spanwise profiles of the primary shear Reynolds stress at $z = D/2$ and $x = 37.5D$ in the simulations with $0.02 < \phi < 0.08$ and circular cylinders ($d/D = 0.1$). (a) Inner-layer scaling; (b) outer-layer scaling. Also shown are sample data from the experiments of White & Nepf (2007) conducted with $0.02 < \phi < 0.1$ and $0.09 < d/D < 0.22$.

Simulation results show that the absolute maximum occurs very close to the extremity of the array. As discussed later, this peak is induced by eddies shed in the wakes of the cylinders situated at the interface with the free-stream region. A second smaller peak is observed on the free-stream side. This peak is mainly associated with the advection of shear layer vortices. Its distance from the interface increases from $(y - y_m)/d_o = 0.4$ for $\phi = 0.08$ to $(y - y_m)/d_o = 0.6$ for $\phi = 0.02$, which is consistent with the increase in the size (e.g. width) of the shear layer vortices with decreasing ϕ (see also discussion of figure 5). The second peak is also observed in several of the experimentally measured profiles (figure 3).

4. Effect of array characteristics on flow and turbulence inside and around the array

4.1. Flow structure inside the array and near the interface with the open flow region

Due to the diversion of the flow approaching the front face of the array, the flow inside the array close to its upstream corner has a strong transverse component away from the channel sidewall. The direction of the flow inside the array can be inferred from the orientation of the wakes and the 2-D streamline patterns shown in figure 4. As a result, a significant part of the flow entering the array at its front face leaves the array through the upstream part of its lateral face. The eddies shed in the wakes of the cylinders close to the lateral interface and the upstream corner of the array delay the formation of the shear layer vortices.

Similar to circular arrays (Chang & Constantinescu 2015; Chang *et al.* 2017), most of the flow entering the array at its front face is diverted laterally (e.g. see 2-D streamline patterns in figure 4). This means that the mechanism responsible for the decay of the bleeding flow at the back of the array with increasing ϕ or aW is the same despite the different shape of the array. In the case of the present rectangular array, the length of the diverging flow region is approximately $3.5D$ ($8 < x/D < 11.5$) in the $aW \approx 1.6$ ($\phi = 0.08$, $d/D = 0.1$) cases with circular cylinders (figure 4a) and square cylinders. Analysis of the distributions of the mean, depth-averaged transverse velocity at the lateral face of the array for these two simulations shows that approximately 50% of the flow (e.g. streamwise

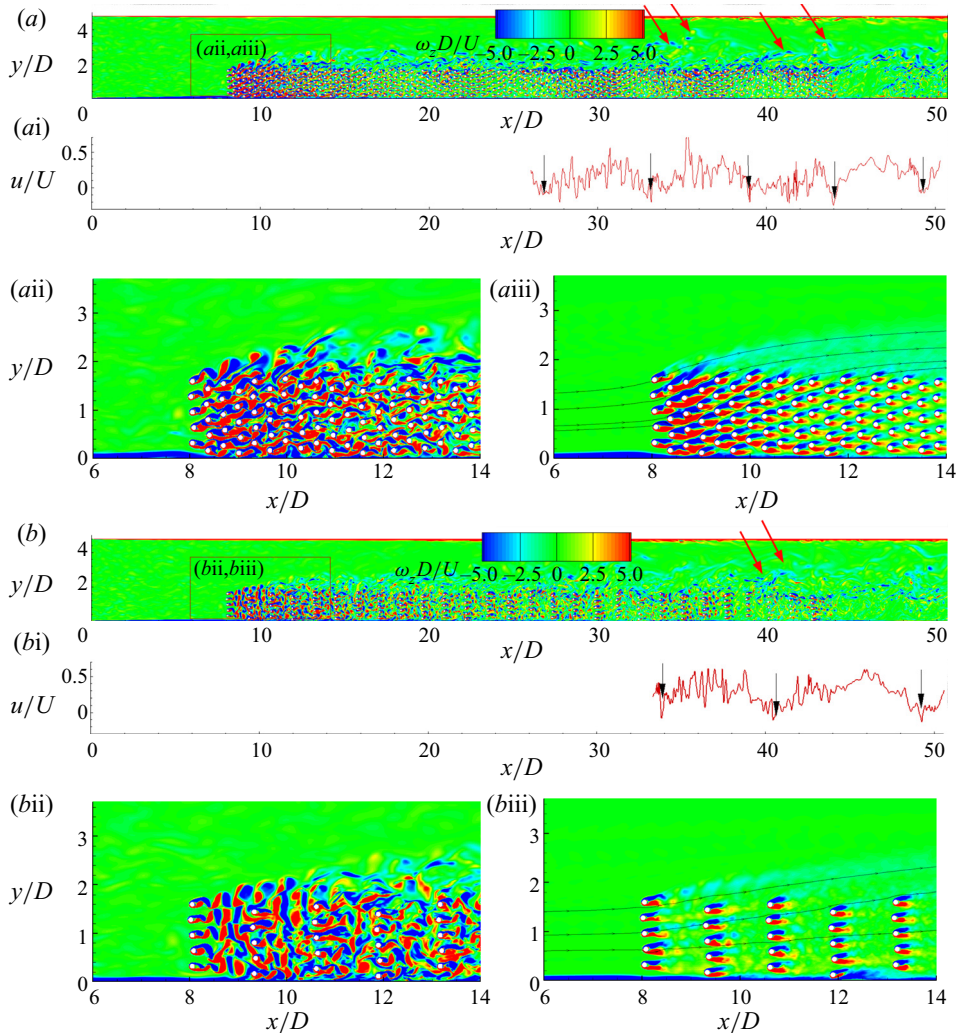


FIGURE 4. Vertical vorticity, $\omega_z(D/U)$, in the $z/D = 0.9$ plane. (a) $\phi = 0.08$, $aW = 1.63$, $d/D = 0.1$; (b) $\phi = 0.02$, $aW = 0.408$, $d/D = 0.1$. The (ai) and (bi) panels show the instantaneous streamwise velocity, u/U , along a line cutting through the middle of the array ($y/W = 0.5$ or $y/D = 0.8$, $z/D = 0.9$). The (a(ii)) and (b(ii)) panels show the instantaneous flow vorticity distribution close to the front of the array (see insets in panels (a), (b)). The (a(iii)) and (b(iii)) panels show the mean-flow vorticity distribution and streamline patterns close to the front of the array. The red arrows point toward eddies generated in the wake of the cylinders situated near the lateral face of the array that penetrate way inside the free-flow region. The black arrows point toward regions of lower streamwise velocity associated with the wave-like oscillations generated inside the downstream part of the array and downstream of it.

discharge) entering the array through the front face leaves the array through the first $3.5D$ of its lateral face. However, the mean flow near the lateral face continues to have a transverse component oriented toward the free-flow region downstream of the diverging flow region (see 2-D streamline patterns in figure 4a). Another close to 30% of the flow entering the front face of the array will leave the array through its lateral face until the mean streamwise discharge inside the array becomes close to constant (see discussion

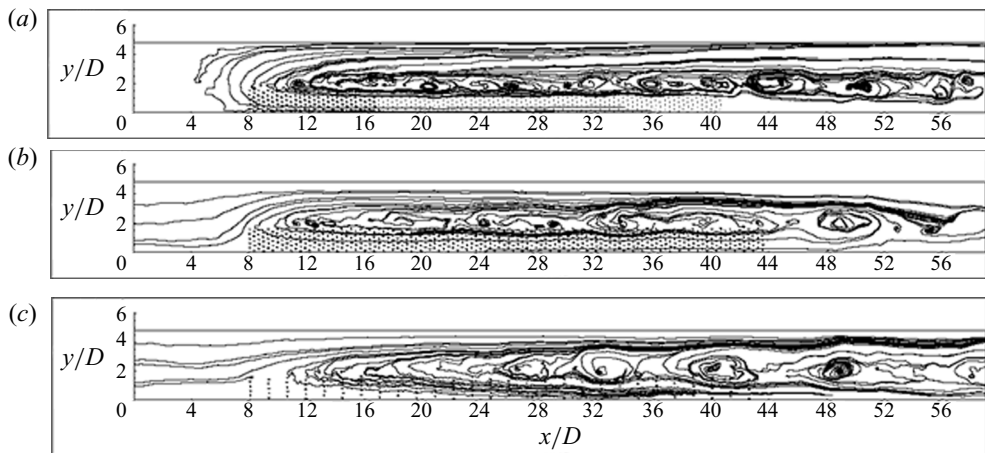


FIGURE 5. Instantaneous flow 2-D streamline patterns in the $z/D=0.9$ plane in a frame of reference moving with the mean velocity of the shear layer vortices. (a) $\phi=0.1$, $aW=1.6$, $d/D=0.1$ SC; (b) $\phi=0.08$, $aW=1.63$, $d/D=0.1$; (c) $\phi=0.02$, $aW=0.408$, $d/D=0.1$.

of figure 6). A diverging flow region is hardly observable in the $aW=0.408$ ($\phi=0.02$, $d/D=0.1$) case (figure 4b), where the wakes of the cylinders situated close to the front of the array are fairly well aligned with the streamwise direction. However, the predicted mean, depth-averaged velocity field shows that the flow leaves the array through its lateral face over the whole length of the array, with only approximately 20% of the flow entering the front of the array leaving it over the first $3.5D$ of the lateral face. Moreover, the mean, depth-averaged transverse velocity at the lateral face decreases monotonically with increasing x/D over the whole length of the lateral face. For the cases with $aW > 0.8$, the array is sufficiently long such that one can consider that the mean, depth-averaged transverse velocity at the lateral face is negligible over some distance from the back of the array. This is the region over which the streamwise flow discharge inside the array is constant.

The interaction of the shear layer vortices with the cylinders situated close to the lateral face of the array results in the entrainment of energetic vortical eddies from the wakes of these cylinders into the free-stream region of the channel. Some of these eddies penetrate deep (e.g. more than $1.5D$) inside the free-stream region (see red arrows in figure 4). Another very interesting phenomenon is present in the instantaneous flow fields. For all cases, successive regions of high and low vertical vorticity magnitude are present inside the downstream half of the array (e.g. see figure 4a). Analysis of the velocity fields shows that the formation of these regions is due to the generation of wave-like, large-scale oscillations of the instantaneous streamwise velocity inside the array (e.g. starting at $x/D \approx 27$ in the $\phi=0.08$, $aW=1.63$ case and at $x/D \approx 34$ in the $\phi=0.02$, $aW=0.408$ case, see panels (ai) and (bi) in figure 4). These oscillations are also observed downstream of the array. For all cases, the mean average distance between successive regions of low streamwise velocity, λ_{LV}/D , is close to the average wavelength of the shear layer vortices, λ/D , given in table 1. For same shape and diameter of the cylinders, the non-dimensional frequency associated with the wave-like oscillations, $St_{array} = fU/D$, increases with increasing aW while λ_{LV}/D decreases with increasing aW . For constant aW , increasing the degree of bluntness of the cylinders (e.g. using square cylinders instead of circular cylinders that for the same width/diameter induce stronger adverse pressure

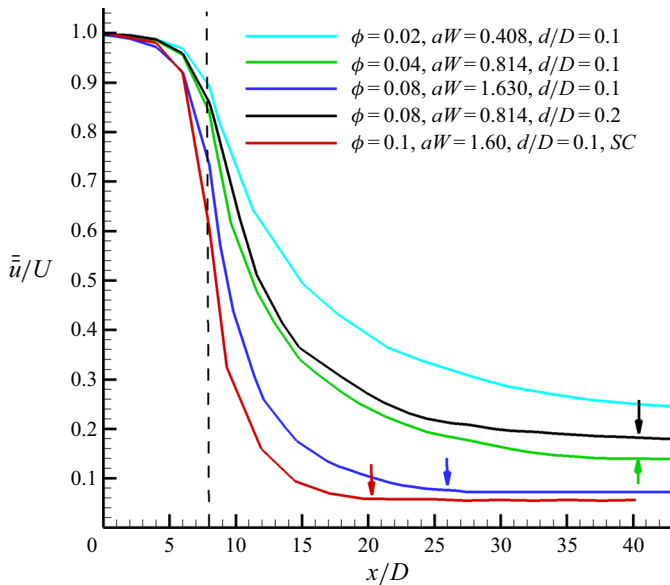


FIGURE 6. Streamwise variation of the depth- and width-averaged ($0 < z < D$, $0 < y < W$) mean streamwise velocity upstream of and inside the array. The profiles were also locally averaged in the streamwise direction to eliminate the local effect of the cylinders. The vertical dashed line marks the front face of the array. The vertical arrows show the prediction of the initial adjustment region (4.1) based on the theoretical model of Chen *et al.* (2013) developed for a channel-spanning submerged array.

gradients away from their front face) results in larger values of St_{array} . For constant aW and same shape of the cylinders forming the array, St_{array} increases with increasing cylinder width-to-depth ratio, d/D (table 1).

4.2. Shear layer vortices

In all simulations, small vortex tubes start forming inside the horizontal shear layer approximately $3D$ – $4D$ from the front face of the array. These vortex tubes grow mostly via vortex pairing into well-defined shear layer vortices. While in the cases with a large aW (figure 5*a,b*) the vortex tubes develop over a fairly small streamwise distance from the front face of the array (e.g. $4D$ – $6D$ from $x = 8D$ for $aW \approx 1.6$) into large shear layer vortices, in the cases with a small aW the first shear layer vortices develop at larger distances from the front face of the array (e.g. $16D$ – $18D$ from $x = 8D$ for $aW = 0.408$, figure 5*c*). Over the downstream part of the array, the size of these vortices is increasing with decreasing aW (figure 5*b,c*) and decreasing degree of bluntness of the cylinders forming the array (figure 5*a,b*). Over the last $16D$ of the array length, the wavelength to width ratio of the shear layer vortices decreases from approximately 3.75 for $aW = 0.408$ to 2.9–3.2 for the two simulations with $aW \approx 1.6$. These values are fairly close to a ratio of 3.0 expected for vortices in free shear layers (Browand & Weidman 1976).

Over the same region, the Strouhal number, $St_{SL} = f_{SL}U/D$ associated with the advection of shear layer vortices increases with aW for constant d/D and cylinders' shape (e.g. from 0.13 for $aW = 0.408$ to 0.19 for $aW = 1.63$ for circular cylinders with $d/D = 0.1$, see table 1). For constant aW , an increase of d/D or of the degree of bluntness of the cylinders results in an increase of St_{SL} (table 1). Moreover, St_{SL} is about two times larger than St_{array} for

all simulations (table 1), which strongly suggests that the shear layer vortices control the formation of the wave-like oscillations of the streamwise velocity inside the array. The mean advection velocity of these vortices is not exactly equal to the mean of the velocities on the free-stream and inner array sides of the shear layer, $(U_1 + U_2)/2$ (figure 1b). For all simulations, this value is close to $0.95U$ (table 1). However, the convective velocity can be estimated as $\lambda * St_{SL} \approx 1.03\text{--}1.1$ based on the values given in table 1. This difference occurs because the cores of the vortices are mostly advected on the free-stream side (figure 5) and their axes are situated some distance away from the lateral face of the array, where the main streamwise velocity is larger than $(U_1 + U_2)/2$.

4.3. Depth-averaged streamwise velocity inside the array

Given that the drag forces acting on the cylinders scale with the square of the local streamwise velocity, it is important to understand how the mean streamwise velocity varies inside the array. The capacity of a cylinder to shed vortices is also dependent on the local streamwise velocity in front of the cylinder, given that no shedding can occur below a threshold Reynolds number defined with d and this velocity. Figure 6 compares the streamwise variations of the depth- and width-averaged ($0 < z < D$, $0 < y < W$) mean streamwise velocity, \bar{u}/U . Inside the array, \bar{u} decays monotonically with the distance from the front face of the array. The decay of \bar{u} and of the associated streamwise flux of fluid inside the array, $DW\bar{u}$, indicates that a non-zero transverse flux of fluid exits the array through its lateral face. This flux becomes equal to zero when \bar{u} becomes constant.

For sufficiently long arrays, one expects \bar{u} to become constant after an initial adjustment region of length X_a , where X_a is measured from the frontal face of the array. Such a regime is reached in the $aW \approx 1.6$ simulations starting around $x/D = 20$ ($X_a/D = 12$) for square cylinders and around $x/D = 25$ ($X_a/D = 17$) for circular cylinders. The simulations with $aW = 0.814$ reach this regime close to the end of the array ($x/D \approx 38$ or $X_a/D \approx 30$). A constant \bar{u} regime is not observed in the $aW = 0.408$ case, so $X_a/D > 35$ for this case. As aW decreases, X_a increases (figure 6). This is consistent with the increase in the distance from the upstream corner of the array needed for the shear layer width to stabilize and for the lateral penetration of the shear layer vortices to reach a close to constant value (figure 5). Using data from the simulations, one can obtain a non-dimensional best fit for the variation of \bar{u}/U between the front face of the array and the location where the constant regime is reached. The best-fit equation is $\bar{u}/U \sim (x/D)^{-\gamma/(aD)}$, where $\gamma \approx 1/3$. A similar exponential decay was observed inside the initial adjustment region for channel-spanning submerged arrays by Belcher, Jerram & Hunt (2003). For this type of array, Chen, Jiang & Nepf (2013) proposed a theoretical model to predict the length of the initial adjustment region

$$X_{at} = \beta L_c (1 + \alpha C_D aW), \quad (4.1)$$

where $L_c = 2(1 - \phi)/C_D a$ is the drag length scale (Belcher *et al.* 2003) and C_D is a mean cylinder drag coefficient for the cylinders situated inside the initial adjustment region. This drag coefficient can be estimated based on the predicted total mean streamwise drag force acting on the cylinders situated inside this region. The scale factors were determined to be $\alpha = 2.1\text{--}2.5$ and $\beta = 1.3\text{--}1.7$ from experimental data obtained for channel-spanning submerged arrays (Chen *et al.* 2013). For the present type of emerged arrays placed at one sidewall, better agreement with the predicted values of X_a is obtained using lower values of the scale factors. For $\alpha = 2.1$ and $\beta = 1.3$, (4.1) gives $X_{at}/D \approx 12.1$ for the case with square cylinders and $aW \approx 1.6$ and $X_{at}/D \approx 18.2$ for the $aW \approx 1.6$ case with circular

cylinders. The same equation predicts $X_{at}/D \approx 33$ for the two cases with $aW = 0.814$ and $X_{at}/D \approx 38.5$ for the case with $aW = 0.408$. Overall, the agreement between the numerical predictions (X_a) and the theoretical model (X_{at}) is quite good, as also seen from [figure 6](#).

An increase in the degree of bluntness of the cylinders results in a 30 % decrease of \bar{u} in the $aW = 1.60$ simulation with square cylinders compared to the $aW = 1.63$ simulation with circular cylinders. However, the increase in the degree of bluntness of the cylinders has a fairly negligible effect on the value of \bar{u} once the constant regime is reached. The bleeding velocity at the back face of the array is decaying with increasing aW if the cylinders in the array are identical. However, for constant aW , increasing d/D results in a larger bleeding velocity (e.g. 15 % increase between the $aW = 0.814$ simulations with $d/D = 0.1$ and $d/D = 0.2$).

4.4. Wake region

For arrays situated away from the channel sidewalls, the wake of the array contains recirculation eddies for sufficiently large $a(2W)$ and ϕ , where $2W$ is the diameter of the array. For example, in the case of emerged circular arrays, the threshold values are close to $a(2W) \approx 1.4$ and $\phi \approx 0.05$ (Chang & Constantinescu 2015; Chang *et al.* 2017). If one neglects the effects of the no-slip boundary condition at the channel sidewall, one can think of an array placed at one sidewall as being half of an array placed in the middle of the channel. The corresponding threshold values for the (semi-circular) array placed at the channel sidewall will be $aW \approx 0.7$ and $\phi \approx 0.05$. These values are not very different from those ($aW \approx 0.6$ and $\phi \approx 0.03$) inferred for the rectangular array used in the present simulations based on the 2-D streamline patterns in the mean flow ([figure 7](#)).

Three types of near-wake regimes are observed. For $aW > 1$, the wake contains a large recirculation eddy ([figure 7a](#)). As opposed to solid obstructions, the recirculation eddy does not touch the back of the array and the distance between this eddy and the back of the array increases monotonically with decreasing aW . This regime is qualitatively similar to the one observed for symmetric porous obstructions/arrays placed far from the channel sidewalls. For such cases, two symmetric recirculation eddies are observed in the mean flow for large aW values (e.g. see Chang *et al.* (2017) for a circular array). In the instantaneous flow, the separated shear layers forming on the two sides of the array interact to shed (counter-rotating) billow vortices at the end of the recirculation eddies. By contrast, no anti-symmetrical vortex shedding is observed in the case the array is placed at one of the channel sidewalls and only one shear layer region is present behind the array. For intermediate values of aW (e.g. $0.5 < aW < 1$, [figure 7b–d](#)), a series of recirculation eddies form at the channel sidewall and the width of these eddies is much smaller than the width of the array. Such regions of separated flows were also observed to form in atmospheric boundary layers developing over a finite-length canopy (Markfort *et al.* 2014) and in the wakes of porous plates placed perpendicular to a wall (Basnet & Constantinescu 2017). For sufficiently low values of aW (e.g. $aW < 0.5$, [figure 7e](#)), no region of separated flow forms at the channel sidewalls and the mean streamwise velocity is positive at all locations inside the wake region.

The distance between the start of the region containing recirculation eddies and the back of the cylinder ([figure 7](#)) is a function of the bleeding flow velocity at the back of the array ([figure 6](#)), which is close to the mean velocity inside the inner array region, U_1/U ([table 1](#)). This velocity is mainly a function of aW , although, for same aW , arrays with larger d/D have a larger bleeding velocity. For constant d/D and $aW > 0.5$, the distance from the back of the array where the flow separates the first time, L_s , and the length of the

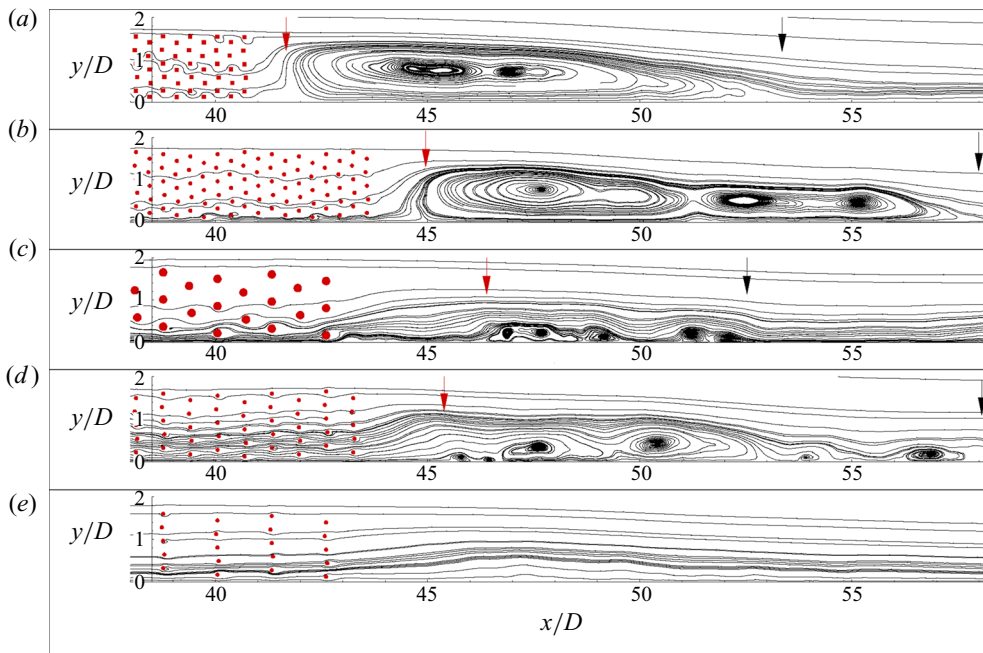


FIGURE 7. Depth-averaged 2-D streamline patterns near the back of the array. (a) $\phi = 0.1$, $aW = 1.6$, $d/D = 0.1$ SC; (b) $\phi = 0.08$, $aW = 1.63$, $d/D = 0.1$; (c) $\phi = 0.08$, $aW = 0.814$, $d/D = 0.2$; (d) $\phi = 0.04$, $aW = 0.814$, $d/D = 0.1$; (e) $\phi = 0.02$, $aW = 0.408$, $d/D = 0.1$. The red arrow shows the location where the flow separates the first time. The distance between the black and the red arrows is defined as the length of the region of separated flow, L_{sep} .

region of separated flow containing the recirculation eddies, L_{sep} , decrease monotonically with increasing aW (table 1). However, increasing d/D for constant ϕ or aW results in an increase of L_s and a decrease of L_{sep} (table 1 and figure 7).

4.5. Turbulent kinetic energy

4.5.1. TKE variation inside the horizontal shear layer

A main mechanism for TKE amplification inside and around the array is the shedding of vortices in the wake of the cylinders situated in the upstream part of the array and close to its lateral face. The other main mechanism for TKE production is the generation and advection of vortices in the horizontal shear layer. These vortices continue to be a main contributor to the TKE downstream of the array as their size increases and they start being destroyed mainly by dissipation at the bed. These mechanisms control the spatial extent of the main regions of high depth-averaged TKE (\bar{k}/U^2) in figure 8.

Given that a minimum critical cylinder Reynolds number defined with d and the local velocity toward the cylinder is needed for vortices to be shed in the wake of a cylinder, the streamwise length of the region where high TKE levels are observed behind the cylinders is directly dependent on the mean streamwise velocity as flow enters the array and its rate of decay inside the array. Figure 7 has shown that this velocity is mainly a function of aW . Results in figure 8 show that the streamwise extent of the region of high \bar{k} near the front face of the array increases with decreasing aW for identical cylinders. For same aW , the

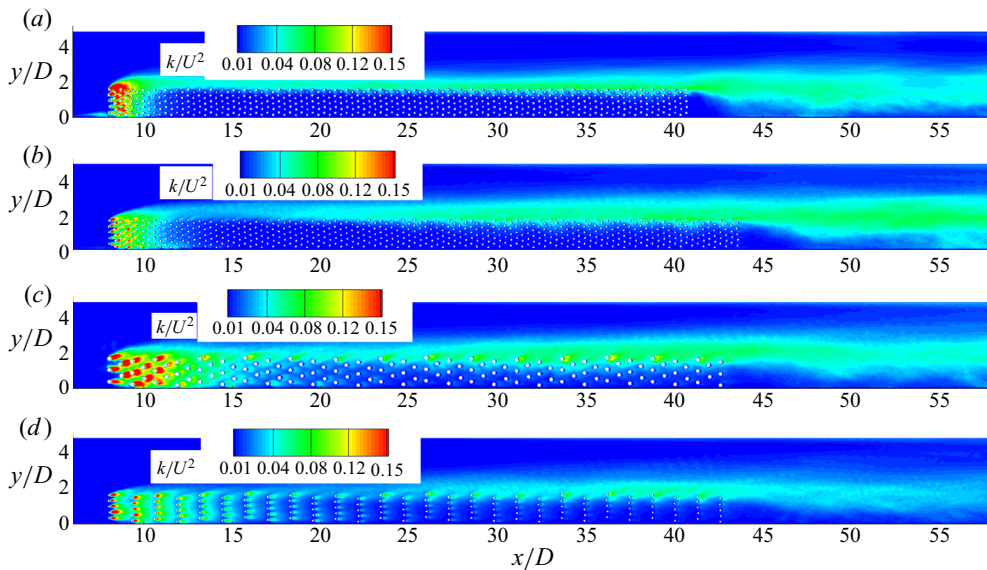


FIGURE 8. Depth-averaged TKE, \bar{k}/U^2 . (a) $\phi = 0.1$, $aW = 1.6$, $d/D = 0.1$ SC; (b) $\phi = 0.08$, $aW = 1.63$, $d/D = 0.1$; (c) $\phi = 0.08$, $aW = 0.814$, $d/D = 0.2$; (d) $\phi = 0.02$, $aW = 0.408$, $d/D = 0.1$.

levels of \bar{k} are larger especially close to the front face of the array if the array contains cylinders with a larger degree of bluntness (figure 8*a,b*).

For most simulations, the transverse profiles of \bar{k} (e.g. at $x/D = 14.5$ and 35 in figure 9) contain two peaks, one next to the lateral face of the array ($y/d = 1.6$ – 1.7) and a second one situated on the free-stream side ($1.85 < y/d < 2.3$). The first peak is induced by eddies shed in the wakes of the cylinders situated at the lateral face of the array, while the second one is induced by the passage of the shear layer vortices. As aW decreases, shear layer vortices need a longer streamwise distance to develop. For example, shear layer vortices form starting around $x/D = 16$ – 18 in the $aW = 0.408$, $d/D = 0.1$ simulation (figure 5*c*), which explains why the transverse profile of \bar{k} at $x/D = 14.5$ (figure 9*a*) contains only one peak next to the lateral face of the array and a sharp decrease of \bar{k} occurs on the free-stream side. As the coherence of the shear layer vortices increases, a two-peak shape is observed for the transverse \bar{k} profiles in the region where the shear layer width becomes close to constant (e.g. at $x/D = 35$, see figure 9*b*). The other extreme case corresponds to the $aW = 1.6$, $d/D = 0.1$ simulation containing square cylinders where energetic shear layer vortices form starting around $x/D = 12$ (figure 5*a*) and the wakes of the cylinders situated at the lateral face of the array are fairly well aligned with the streamwise direction, such that their supply of energetic turbulent eddies to the shear layer region on the free-stream side is relatively small compared to the other cases. In the $aW = 1.6$, $d/D = 0.1$ (SC) case, no peak in the \bar{k} profiles is observed at $y/d = 1.6$ – 1.7 over the upstream part of the shear layer (e.g. $x/D = 14.5$, figure 9*a*). Once the rate of growth of the shear layer becomes very small and the shear layer vortices penetrate inside the array, the main peak moves closer to the lateral face of the array (figure 9*b*) mostly because of the additional turbulence generated by the shear layer vortices interacting with the cylinders.

The lateral extent of the region of high TKE (e.g. $\bar{k}/U^2 > 0.04$) forming next to the lateral face of the array can be used to estimate the total shear layer width. Results in figures 8 and 9(*b*) show that in the region where the shear layer is close to stabilized, the

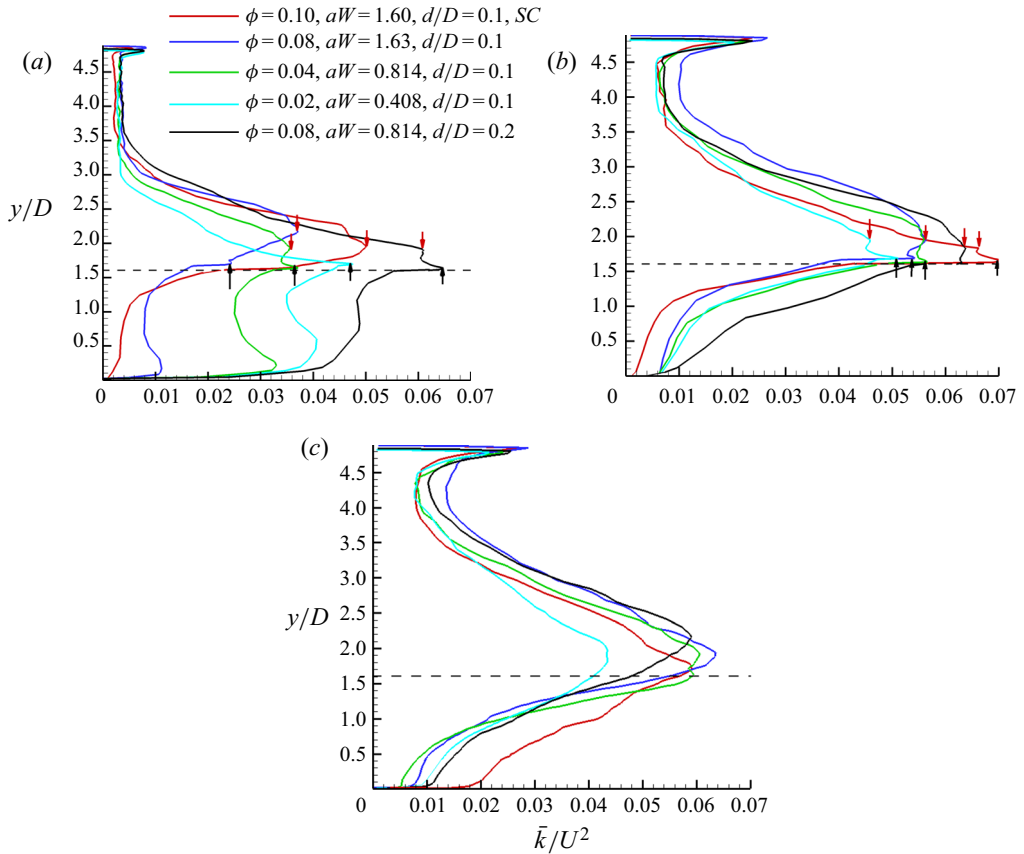


FIGURE 9. Depth-averaged TKE profiles, \bar{k}/U^2 . (a) $x/D = 14.5$; (b) $x/D = 35.0$; (c) $\Delta x/D = 2$ behind the back face of the array ($x/D = 45$ or 43). The dashed line corresponds to the position of the lateral boundary of the array ($y/D = 1.6$). The black arrows point toward the TKE peak induced by eddies shed in the wake of the cylinders situated next to the lateral face of the array. The red arrows point toward the TKE peak induced by the passage of the shear layer vortices.

shear layer width increases with aW for constant d/D and same shape of the cylinders. For constant aW , increasing d/D results in an increase of the shear layer width and the peak TKE inside it. An increase in the degree of bluntness of the cylinders decreases the shear layer width but increases the peak TKE inside the shear layer. Once the shear layer vortices move past the array, the rate of decay of the TKE away from the peak value on the side containing the array approaches the one on the free-stream side (e.g. the \bar{k} profiles in figure 9(c) become fairly symmetric).

4.5.2. TKE variation inside the array

To characterize in a more global way the variation of the TKE inside the patch, the profiles of the non-dimensional depth- and width-averaged ($0 < z < D$, $0 < y < W$) TKE, $\bar{\bar{k}}/U^2$, are compared in figure 10. As for the streamwise velocity, the streamwise variation of $\bar{\bar{k}}$ inside the array is mainly a function of aW . Starting with $x/D \approx 10$, $\bar{\bar{k}}$ decreases rapidly with increasing x/D . This first regime ends at around the streamwise location where no

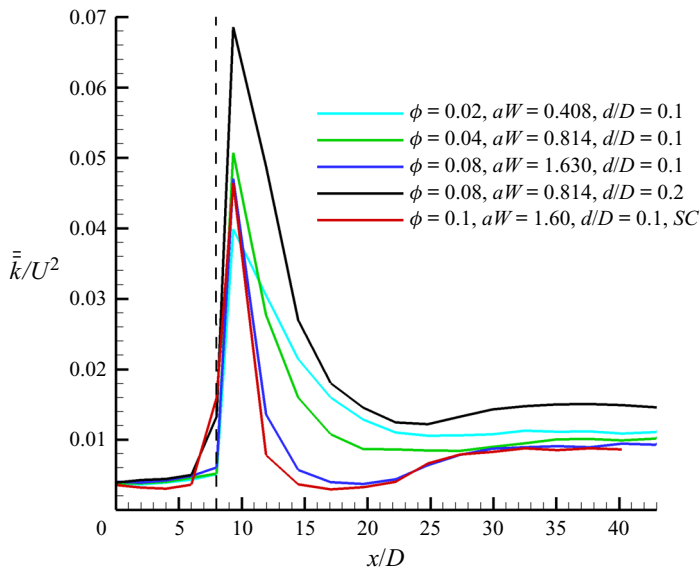


FIGURE 10. Streamwise variation of the depth- and width-averaged ($0 < z < D$, $0 < y < W$) TKE, \bar{k}/U^2 , upstream of and inside the array. The profiles were also locally averaged in the streamwise direction. The vertical dashed line marks the front face of the array.

vortex shedding is observed in the wakes of the cylinders except for the ones situated at the lateral face of the array. This is followed by a transition regime toward the stabilized regime where \bar{k} is close to constant. Interestingly, the value of \bar{k} over this last regime is close to independent of aW if d/D is kept constant but increases with d/D for constant aW or ϕ . This is because of the aforementioned increase of the coherence and size of the vortices shed by the cylinders situated close to the lateral face of the array with the cylinder diameter. These unsteady vortices are the main contributor to \bar{k} over this region.

For most simulations, the lowest values of \bar{k} occur over the transition regime. A large part of the TKE in the region corresponding to the transition regime is produced by vortices shed by the cylinders situated at or very close to the lateral face of the array and by the shear layer vortices that penetrate partially inside the array. Over the transition region, the coherence of the shear layer vortices continues to grow. Moreover, the lateral distance these vortices penetrate inside the array is smaller compared to that during the stabilized regime (figure 5). These effects explain the slight increase in \bar{k} with x/D before the constant \bar{k} regime starts.

5. Vertical momentum exchange inside the array

In the case of a patch of vegetation, the dynamics of fine particles containing nutrients and the capacity of the patch to trap sediments and heavy metals are affected by the vertical momentum exchange by the mean flow and turbulence (e.g. as measured by the mean vertical velocity, w and its mean fluctuations, w'). These two variables and the associated secondary motions affect the dynamics of particulates and mixing of transported matter inside and around the array. For example, low levels of w' and weak mean downwelling motions near the bed favour sediment deposition. Strong upwelling motions generally favour advection of entrained particulates away from the bed.

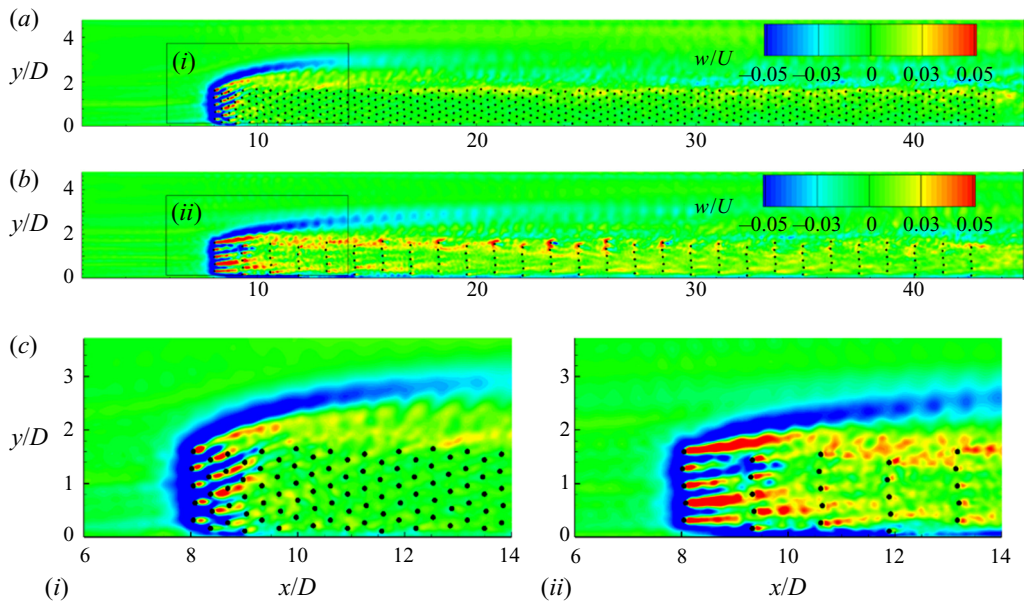


FIGURE 11. Mean vertical velocity, w/U , in a horizontal plane situated at $0.25D$ above the channel bed. (a) $\phi = 0.08$, $aW = 1.63$, $d/D = 0.1$; (b) $\phi = 0.02$, $aW = 0.408$, $d/D = 0.1$. The frames labelled (i) and (ii) show the vertical velocity distribution around the front face of the array for the two cases.

Starting close to the free surface, part of the flow approaching the front face of the array is diverted toward the bed to form the downflow. The downflow triggers the formation of other regions of mean-flow downwelling inside and around the array. As opposed to a solid rectangular obstruction, the porosity of the array region means that some of the downflow penetrates inside the array. This explains the presence of elongated streaks of negative mean vertical velocity inside the upstream part of the array, as visualized in figure 11 in a horizontal plane ($z/D = 0.25$) where the downflow is the strongest. In the $aW = 1.63$ simulation (figure 11a), the peak vertical velocity magnitude is close to $0.1U$ inside the downflow and around the first transverse row of cylinders. In all simulations, these streaks follow the corridors of high horizontal velocity magnitude forming inside the array. Large negative vertical velocities are also recorded inside the region of high horizontal velocity amplification close to the upstream edge of the array. The horizontal velocity increases as part of the incoming flow is diverted around the array and then accelerates as it passes the upstream corner of the array. Away from their formation region, the horizontal shear layer vortices advect fluid toward the bed inside their cores, but their mean vertical momentum is rather small. Given the incompressibility constraint, regions of flow upwelling must compensate for the ones where the flow is moving toward the bed. The main regions of flow upwelling correspond to the wakes of the cylinders. This is qualitatively similar to what was observed by Chang *et al.* (2017) for a circular patch of emerged cylinders placed away from the channel sidewalls. The upwelling is the strongest for the cylinders situated close to the front and lateral faces of the rectangular array (figure 11). In general, regions of relatively high horizontal velocity magnitude inside the array generate upwelling in the wakes of the neighbouring cylinders.

As ϕ and aW decrease, the strength of the downflow around the front face of the array decreases. However, at least for the range of ϕ and aW values considered in the present

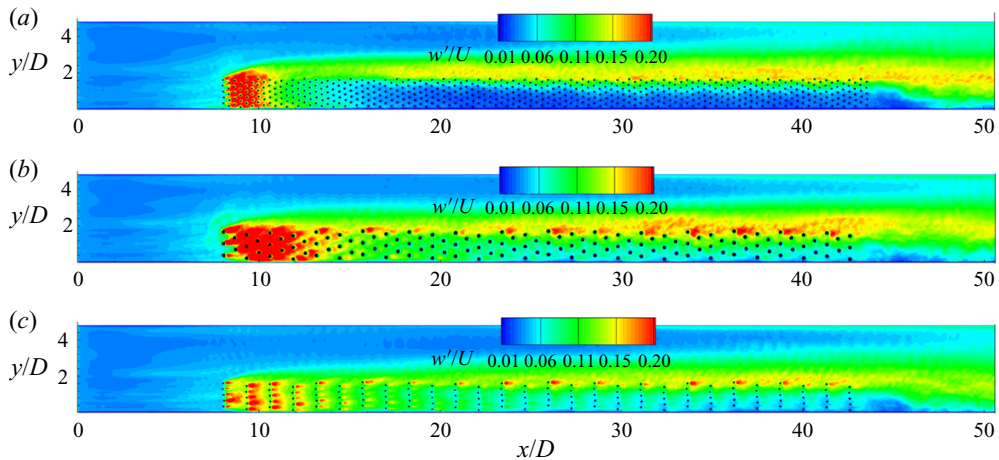


FIGURE 12. Mean vertical velocity fluctuations, w'/U , in a horizontal plane situated at $0.25D$ above the channel bed. (a) $\phi = 0.08$, $aW = 1.63$, $d/D = 0.1$; (b) $\phi = 0.08$, $aW = 0.814$, $d/D = 0.2$; (c) $\phi = 0.02$, $aW = 0.408$, $d/D = 0.1$.

simulations, the weakening of the downflow in front of the array does not translate in a decrease of the overall strength of the upwelling and downwelling motions inside the array and in the flow acceleration region originating near its upstream corner. In particular, the upwelling gets stronger with the decrease in ϕ and aW in the wakes of the cylinders situated near the lateral face of the array.

The shedding of vortices in the wakes of the cylinders situated close to the front and lateral faces of the array is the main mechanism for generation of regions of high mean vertical velocity fluctuations (figure 12). For same ϕ or aW , the amplification of w'/U inside the array and close to its lateral face is stronger for arrays containing larger cylinders (e.g. compare w'/U in figure 12*a,b*). This is expected because the coherence of the eddies shed in the wakes of solid cylinders scales with the diameter of the cylinder. For same d/D , decreasing ϕ or aW increases the streamwise distance over which high w'/U values are generated in the wakes of the cylinders starting at the front face of the array and increases w'/U in the wakes of the cylinders situated at the lateral face of the array (figure 12*a,c*). Meanwhile, the width of the region of high w'/U inside the horizontal shear layer decreases. For cases with sufficiently large ϕ or aW , the downstream part of the inner array region is characterized by negligible vertical velocity fluctuations (e.g. $x/D > 16$ for the $aW = 1.63$, $\phi = 0.08$, $d/D = 0.1$ case, figure 12*a*). Given that the mean horizontal velocity is also small inside this region (figure 6), one expects substantial sediment deposition to occur inside the array in such cases.

In the case of a channel-spanning submerged canopy, Poggi, Katul & Albertson (2004) have found that dispersive fluxes are negligible in dense canopies but are significant ($> 10\%$ of the turbulent stresses) in sparse canopies. The flow investigated here is subject to stronger 3-D effects and cross-stream secondary flow triggered by the downflow forming near the front face of the array. The presence of significant mean vertical velocities even at large distances from the front face of the array, where the shear layer is close to being stabilized, raises the question if the streamwise (depth-averaged) momentum balance inside and around the array is controlled by the turbulent Reynolds stresses and the bed friction term, as would be expected in a quasi-2-D flow, or if the dispersive fluxes due to differential advection over the vertical direction are also an important contributor.

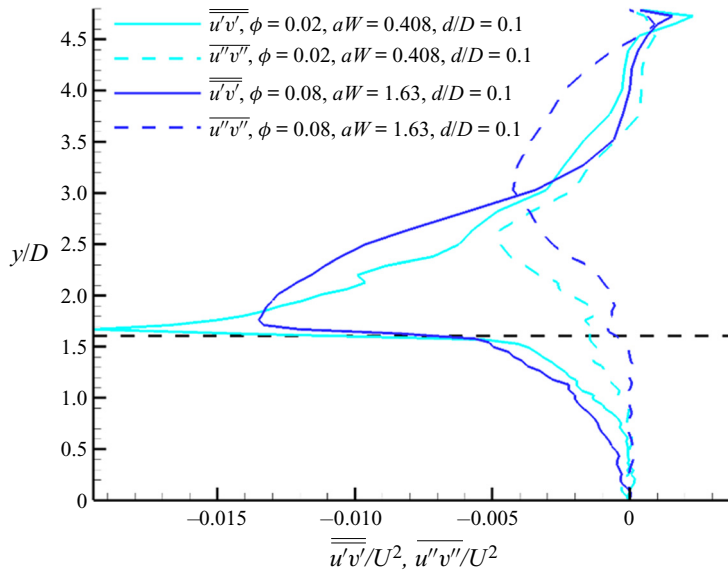


FIGURE 13. Depth-averaged primary turbulent stress, $\overline{u'v'}/U^2$, and the corresponding dispersive flux, $\overline{u''v''}/U^2$, at $x/D = 35.0$. The horizontal dashed line corresponds to the position of the lateral edge of the array ($y/D = 1.6$).

To investigate these effects in a quantitative way, we examine the depth-averaged lateral momentum flux components. The depth-averaged turbulent lateral momentum flux, $\overline{u'v'}$, is simply estimated by depth averaging the corresponding Reynolds stress, $\overline{u'v'}$. The dispersive lateral momentum flux $\overline{u''v''}$ is estimated as the depth-averaged value of $u''v''$, where the velocity fluctuations in the streamwise (u'') and spanwise (v'') directions are calculated as the difference between the time-averaged velocity component and the depth- and time-averaged velocity component.

The variations of $\overline{u'v'}$ and $\overline{u''v''}$ are compared in figure 13 at $x/D = 35$ for two array densities. For both sparse and dense array cases, the dispersion fluxes are negligible close to the sidewall ($y/D = 0$) at which the array is positioned. While for denser arrays (e.g. $\phi = 0.08$, $aW = 1.63$, $d/D = 0.1$ case) the dispersion flux inside the array remains low until the lateral face of the array ($y/D = 1.6$), for relatively sparse arrays the magnitude of the dispersion flux starts growing as the lateral face of the array is approached. For example, $|\overline{u''v''}|/|\overline{u'v'}| \approx 0.3$ at $y/D = 1.6$ in the $\phi = 0.02$, $aW = 0.408$, $d/D = 0.1$ case. Regardless of the array density, the magnitude of the dispersion flux peaks inside the free-stream region, more exactly near the region where the TKE decreases rapidly on the free-stream side of the shear layer (see depth-averaged TKE distributions in figure 8*b,d* near $x/D = 35$). Around the spanwise location at which the dispersion flux reaches its maximum magnitude, $|\overline{u''v''}|/|\overline{u'v'}| \approx 1.0$. Although the spanwise location of the peak dispersion flux moves toward the sidewall opposite the array with increasing array density, the magnitude of the peak dispersive flux is fairly insensitive to variations in ϕ and aW . The part of the free-stream region situated next to the shear layer is a region where dispersion fluxes play a significant role in the redistribution of the streamwise momentum. The width of this region increases with increasing array density.

6. Bed friction velocity and sediment erosion mechanisms

6.1. Sediment erosion mechanisms

The presence of large-scale coherent structure in the vicinity of the bed surface may induce a large amplification of the bed friction velocity inside and around the rectangular patch. Sections 4.1 and 4.2 discussed how the geometrical parameters of the array affect the coherence of the horizontal shear layer vortices and the size of the regions where energetic vortices are shed in the wake of the solid cylinders. Given that most of these vortices penetrate up to the channel bed, they may be main mechanisms for the entrainment and transport of particulates/sediments. The third type of vortex that may play an important role in sediment entrainment in the case of a loose bed is horseshoe vortices. For sufficiently high values of ϕ and aW , the turbulent horseshoe vortex system forming around the upstream corner of the rectangular array is expected to be qualitatively similar to that observed for solid rectangular obstacles placed at one of the channel sidewalls (e.g. see Koken & Constantinescu 2009). For both emerged and submerged circular obstructions in a flat-bed open channel, the coherence of the horseshoe vortices is lower in the case of a porous obstruction compared to a solid one of same size (Chang *et al.* 2017, 2020). Regardless of the shape of the array, the interaction of the incoming flow with the cylinders situated very close to the front face of the array may also generate horseshoe vortices at the base of these cylinders if the velocity of the flow entering the array is sufficiently large. The mechanism for the formation of these horseshoe vortices is similar to those forming at the base of isolated solid cylinders placed in a flat-bed channel (Kirkil *et al.* 2015).

Figure 14 visualizes the vortical structures around the upstream part of the rectangular array using the Q criterion, which is the second invariant of the resolved velocity gradient tensor and isolates regions where rotation dominates strain in the flow (Dubief & Delcayre 2000). A well-defined horseshoe vortex system associated with the array forms only in the $\phi = 0.1$, $aW = 1.6$ simulation with square cylinders (figure 14a). It contains a main horseshoe vortex, HVA1, and one secondary horseshoe vortex, HVA2. Very weak horseshoe vortices are also observed around some of the cylinders situated at the front of the array. In part, this is because the main horseshoe vortex ‘shields’ the base of these cylinders from the larger incoming flow velocities. By contrast, only a very weak horseshoe vortex (HVA1) forms close to the upstream corner in the corresponding simulation with circular cylinders ($\phi = 0.08$, $aW = 1.63$, figure 14b) despite the very close values of aW . The main difference is the larger degree of bluntness of square cylinders which generate larger drag forces compared to circular cylinders. The drag coefficient ratio between square and circular cylinders is close to 1.8 for isolated cylinders at $Re_d = 1250$ and close to 1.5 for the first row of cylinders in the present simulations. This difference in the values of the drag coefficients of the exposed cylinders results in larger adverse pressure gradients generated in front of the array containing square cylinders, a stronger downflow and a stronger acceleration of the incoming flow around the corner of the array compared to the case with circular cylinders. These flow features are the main mechanisms responsible for the development of a scour hole in front of the array in the case of a loose bed. In the case of patches of vegetation, this can lead to exposing the roots of the plant stems followed by dislocation of these stems.

No horseshoe vortex system associated with the array forms in the simulations with circular cylinders if $aW < 1$ (figure 14c,d). However, horseshoe vortices form around the base of some of the exposed cylinders at the front face of the array if $aW < 1$ (e.g. HVC1 in figure 14c is a horseshoe vortex associated with the cylinder positioned at the corner of the array). In the case of a loose bed, the individual scour holes forming around the

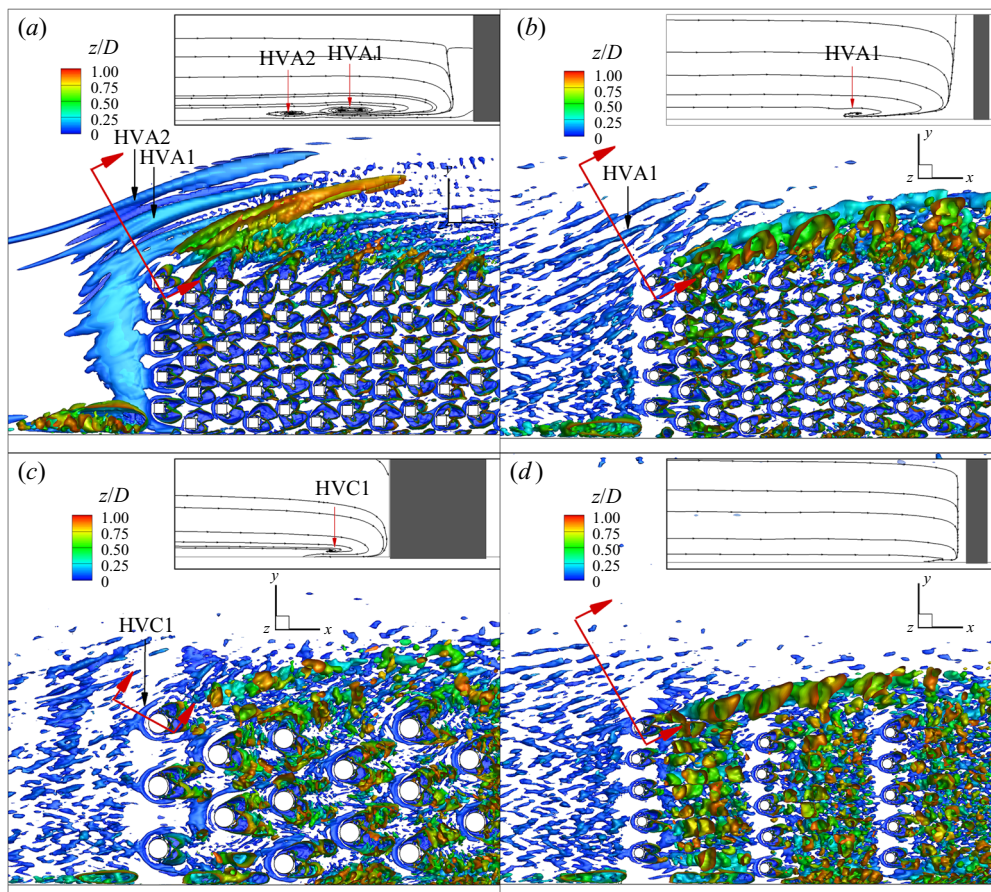


FIGURE 14. Visualization of the mean-flow coherent structures around the upstream part of the array using the Q criterion: (a) $\phi = 0.1$, $aW = 1.6$, $d/D = 0.1$ SC; (b) $\phi = 0.08$, $aW = 1.63$, $d/D = 0.1$; (c) $\phi = 0.08$, $aW = 0.814$, $d/D = 0.2$; (d) $\phi = 0.02$, $aW = 0.408$, $d/D = 0.1$. The view is from above. The horseshoe vortices labelled HVA form around the corner of the array while those labelled HVC form around the base of some of the cylinders directly exposed to the incoming flow. These vortices are visualized using 2-D streamline patterns in a vertical plane (see insets). The red line shows the position of the vertical plane.

upstream cylinders can grow and start merging with neighbouring ones. This can lead to the formation of a horseshoe vortex around the upstream face of the array during the later stages of the scour process even though no such vortex is present during the initial stages.

6.2. Bed friction velocity and effect of large-scale coherent motions

As the mesh spacing in the vertical direction is small enough for the first point off the wall to be situated inside the viscous sublayer, the magnitude of the local bed friction velocity in the instantaneous flow is calculated as

$$u_\tau/U = \left(\frac{1}{Re_D} \frac{u_m}{U} \frac{n_1}{D} \right)^{1/2}, \quad (6.1)$$

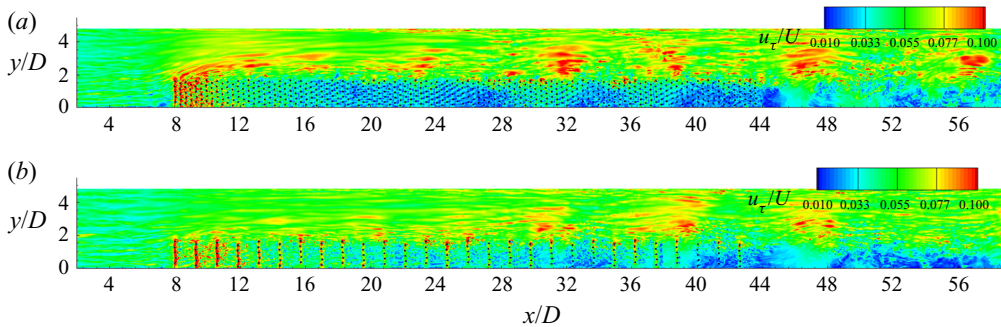


FIGURE 15. Instantaneous flow bed friction velocity magnitude, u_τ/U . (a) $\phi = 0.08$, $aW = 1.63$, $d/D = 0.1$; (b) $\phi = 0.02$, $aW = 0.408$, $d/D = 0.1$.

where u_m is the velocity magnitude in a plane parallel to the bed situated at a normal distance n_1 from the bed.

As discussed in § 4.1, the passage of the shear layer vortices triggers the formation of regions of high and low streamwise velocity above the channel bed. These regions penetrate until the bed. It is not the cores of the shear layer vortices, but rather the successive regions of high and low, near-bed streamwise velocity that are responsible for the generation of the spanwise-oriented patches of high and low u_τ inside and outside the array (e.g. see u_τ distributions in figure 15 for $x/D > 20$). The patches of high u_τ start at the sidewall containing the array and end on the free-stream side, outside of the shear layer. For the circular cylinder cases with $d/D = 0.1$, as aW and ϕ increase, so does u_τ inside these patches. This is especially the case on the free-stream side, where most of the sediment will be entrained in the case of a loose bed. Moreover, the patches of high u_τ are not destroyed at the end of the array but continue to propagate downstream and can induce lots of sediment entrainment on the side of the channel opposite the array.

The other regions containing high u_τ values in figure 15 correspond to the flow acceleration region forming on the outer side of the shear layer starting at the upstream corner of the array and to the upstream part of the array. The amplification of u_τ inside the upstream part of the array is due to the increase in the streamwise velocity as the flow accelerates in between neighbouring cylinders and to the wake vortices shed in the wake of the cylinders for which the flow conditions allow the cylinders to shed strongly coherent vortices. As aW increases, more of the incoming flow is deflected around the upstream corner of the array and lower velocity fluid enters the array (figure 6). This has an opposite effect on the length of the two regions of high u_τ and values of u_τ inside them (figure 15).

The sediment entrainment capacity of the flow is not only a function of the mean bed friction velocity, \bar{u}_τ , but also of the root-mean-square of the bed friction velocity, u_τ^{SD} which accounts in an approximate way for the effects of large-scale unsteadiness on the bed shear stress (Cheng, Koken & Constantinescu 2018). Figure 16 allows understanding the effects of varying aW , ϕ , d/D and the cross-sectional shape of the cylinders on these two variables. The formula used to estimate \bar{u}_τ and u_τ^{SD} is the same as that used for u_τ but with u_m being redefined as the mean velocity magnitude and the square root of the TKE, respectively.

It is only for cases with $aW > 1$ that a distinct region of high \bar{u}_τ forms on the free-flow side, close to the upstream edge of the array (figure 16a,b). In the two simulations with $aW \approx 1.6$, the increase of \bar{u}_τ in this region is by more than 50% higher in the

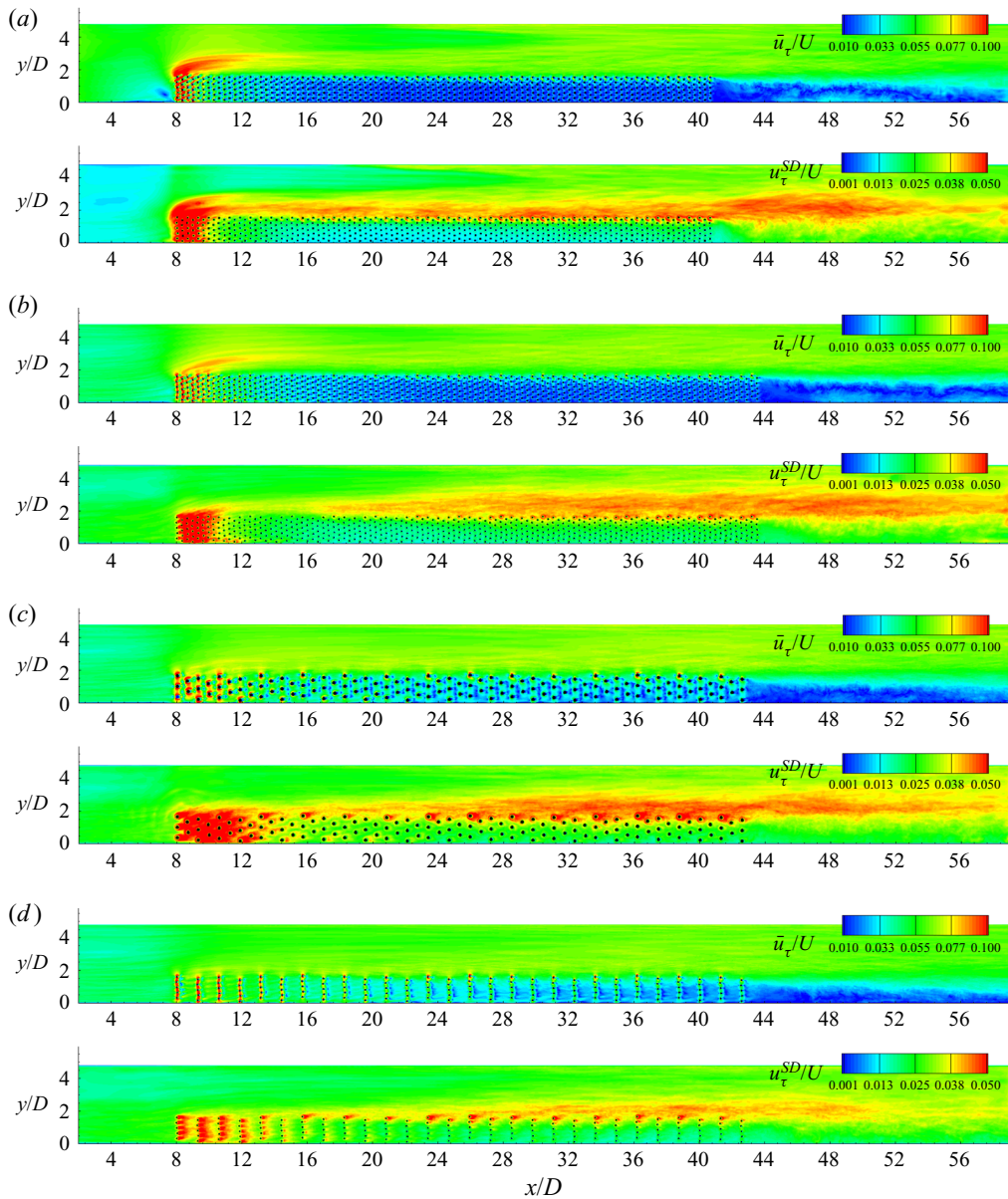


FIGURE 16. Mean-flow bed friction velocity magnitude, \bar{u}_τ/U , and root-mean-square of the bed friction velocity fluctuations u_τ^{SD}/U . (a) $\phi = 0.1$, $aW = 1.6$, $d/D = 0.1$ SC; (b) $\phi = 0.08$, $aW = 1.63$, $d/D = 0.1$; (c) $\phi = 0.08$, $aW = 0.814$, $d/D = 0.2$; (d) $\phi = 0.02$, $aW = 0.408$, $d/D = 0.1$.

simulation with square cylinders compared to the one with circular cylinders because the higher bluntness of the cylinders at the front of the patch increase the fraction of the flow approaching the array that is deflected laterally rather than entering the array. The formation of horseshoe vortices (figure 14a) also contributes to the increase of \bar{u}_τ in the same region. As the position and coherence of these vortices change with time, large values of u_τ^{SD} are induced inside this region in the $aW = 1.6$ simulation with square cylinders (figure 16a). The values of u_τ^{SD} around the corner of the array remain low in all other

simulations which confirms that the amplification of u_{τ}^{SD} in this region is mainly controlled by the horseshoe vortices.

As the velocity inside the horizontal shear layer is lower than that in the remaining part of the free-flow region, one would expect lower \bar{u}_{τ} values beneath the shear layer compared to the close to constant streamwise velocity region situated close to the sidewall. However, for most cases the levels of \bar{u}_{τ} beneath the free-stream side of the shear layer are by up to 20% larger compared to those close to the sidewall (figure 16). This is because of the strong downwelling motions inside the upstream part of the shear layer (figure 11) that advect higher streamwise velocity fluid toward the bed. Meanwhile, the passage of the vortices is responsible for the high values of u_{τ}^{SD} observed in all simulations beneath the horizontal shear layer. The average levels of $u_{\tau}^{SD}(x/D)$ tend to level off once the shear layer growth stabilizes and remain high well after the end of the array, as the shear layer vortices maintain their coherence at large distances from the back of the array. The absence of recirculation eddies in the wake of the array (figure 16d) results in a sharper decay of u_{τ}^{SD} in the region behind the array where vortices originating in the shear layer are advected. For constant ϕ or aW , an increase in d/D results in an increase of the average levels of u_{τ}^{SD} inside the stabilized part of the shear layer on the free-stream side (e.g. see figure 16b,c).

The other main region of high u_{τ}^{SD} occupies the upstream part of the patch. It basically corresponds to the region occupied by the cylinders that shed vortices in their wake. Its length increases monotonically with increasing aW , at least for constant d/D . Finally, cylinders situated at the lateral face of the array locally amplify u_{τ}^{SD} along the whole length of the array. For $aW < 1$, the peak values of u_{τ}^{SD} beneath the shear layer region are induced by the eddies shed by the cylinders at the lateral face of the array rather than by the shear layer vortices (figure 16c,d).

Regions of low \bar{u}_{τ} and u_{τ}^{SD} favour sediment deposition. Such regions are present inside the array and at its back. Consistent with the streamwise decrease of the streamwise velocity and TKE inside of the array (figures 6 and 10), the length of the region inside the array characterized by a small sediment entrainment capacity increases monotonically with increasing aW . For example, in the simulations with circular cylinders the length of the region with $\bar{u}_{\tau}/U < 0.035$ decreases from $25D$ for $aW = 1.63$ (figure 16b) to approximately $10D$ for $aW = 0.408$ (figure 16d). For same aW , the length of the region of low \bar{u}_{τ} increases with the increase in the degree of bluntness of the cylinders' shape (figure 16a,b).

For the range of aW values considered in this study, the wake of the array is a region of low \bar{u}_{τ} regardless of whether or not recirculation eddies attached to the sidewall form in the wake. In the cases with $aW < 1$, the region containing the lowest \bar{u}_{τ} values in the wake of the array remains in the immediate vicinity of the sidewall even when no recirculation eddies are present (figure 16d). A sediment deposition bar is expected to form at the channel bank containing the array and patches of vegetation are expected to grow primarily at their back side because of the supply of nutrients and the low flow velocities in this region.

The maximum values of u_{τ}^{SD} in some large regions inside and around the array (e.g. horizontal shear layer) are close to 50% of the peak values of \bar{u}_{τ} (figure 16). This suggests that the sediment entrainment capacity of the flow is significantly affected by the large-scale unsteadiness driven by the coherent structures generated or advected near the bed. Several authors proposed using an augmented bed friction velocity $\bar{u}_{\tau} + Cu_{\tau}^{SD}$ in standard sediment entrainment formulas to account for the effect of large-scale unsteadiness, where the empirical coefficient C is close to 1 (Sumer *et al.* 2003; Kraft, Wang & Oberlack 2011; Cheng *et al.* 2018). For example, assuming $U = 0.18 \text{ m s}^{-1}$,

$D = 0.07$ m and $C = 1$, sediment with a mean diameter $d_{50} = 100$ μm is entrained from the bed if $(\bar{u}_\tau + u_\tau^{SD})/U > 0.067$ using a Shields diagram (Miller, McCave & Komar 1977).

Two regions of particular interest are the interior of the array and the free-stream region in which the horizontal shear layer vortices are advected. Analysis of the distributions of \bar{u}_τ/U and u_τ^{SD}/U inside the array shows that the size of the region defined by $(\bar{u}_\tau + u_\tau^{SD})/U > 0.067$ is clearly larger in the $\phi = 0.04$ and $\phi = 0.08$ simulations compared to the other simulations. For the free-stream region around the array, the size of the region defined by $(\bar{u}_\tau + u_\tau^{SD})/U > 0.067$ peaks for the $\phi = 0.08$ simulations. These results suggest that scour around and inside the rectangular array will develop the fastest for arrays with $\phi \approx 0.08$, at least during the initial stages of the scour process, assuming an initial flat-bed surface.

7. Drag forces

The time-averaged, non-dimensional force vector acting on the solid cylinders situated close to the front face of the array,

$$\frac{\bar{\mathbf{F}}^n}{0.5\rho U^2 dD} = \frac{\bar{F}_{DS}^n}{0.5\rho U^2 dD} \mathbf{i} + \frac{\bar{F}_{DL}^n}{0.5\rho U^2 dD} \mathbf{j} = \bar{F}_{DS}^n \mathbf{i} + \bar{F}_{DL}^n \mathbf{j} \quad (7.1)$$

($n = I, N, DS$ and DL denote the streamwise and lateral drag force components, respectively, the bar denotes a time-averaged quantity and the prime denotes a non-dimensional quantity), is shown in figure 17 for the $aW = 1.63$ and $aW = 0.408$ cases with $d/D = 0.1$ and circular cylinders. The mean force acting on each cylinder is obtained by integrating the pressure and shear stresses over the cylinder's height. In both cases, the largest drag forces are induced on the cylinders situated close to the front face of the array. Closer to the back face of the array, the cylinders situated near the lateral face of the array are subject to the largest drag forces because of the higher flow velocities inside the shear layer. So, even for very long arrays with large aW or ϕ where \bar{u} is very small at large x/D , the total streamwise drag force is expected to mildly increase with the increase in the length of the array. Results in figure 17 suggest that the cylinders situated inside the upstream part of the array contribute the most to the total drag force and the length of the region characterized by relatively large (streamwise) drag forces increases with decreasing ϕ and aW . Except for the cylinders situated close to the front and lateral faces of the array, the lateral force component is less than 10% of the streamwise component for most of the remaining cylinders in the array.

Some of the aforementioned trends are illustrated in a more quantitative way in figure 18(a) that shows the streamwise decay of the spanwise-averaged, non-dimensional, mean streamwise drag force acting on the cylinders, $\overline{F'_{DS}}(x/D)$. For each spanwise row of cylinders, the average streamwise location of the cylinders is calculated and then the average streamwise force is estimated based on the streamwise drag force acting on each of the cylinders forming that row. The close to monotonic decay toward a constant streamwise drag force regime is mainly a function of aW . Cases with similar aW values but with different shape of the cylinders or with different d/D are characterized by a close to identical decay of $\overline{F'_{DS}}$ with x/D starting a short distance from the front face. As expected, the mean streamwise drag force acting on the first transverse row of cylinders directly exposed to the flow is larger in the $aW = 1.6$ simulation with square cylinders ($\overline{F'_{DS}}(8) \approx 1.5$) compared to the $aW = 1.63$ simulation with circular cylinders ($\overline{F'_{DS}}(8) \approx 1$). However, the values of $\overline{F'_{DS}}(x/D)$ in the two simulations are very close

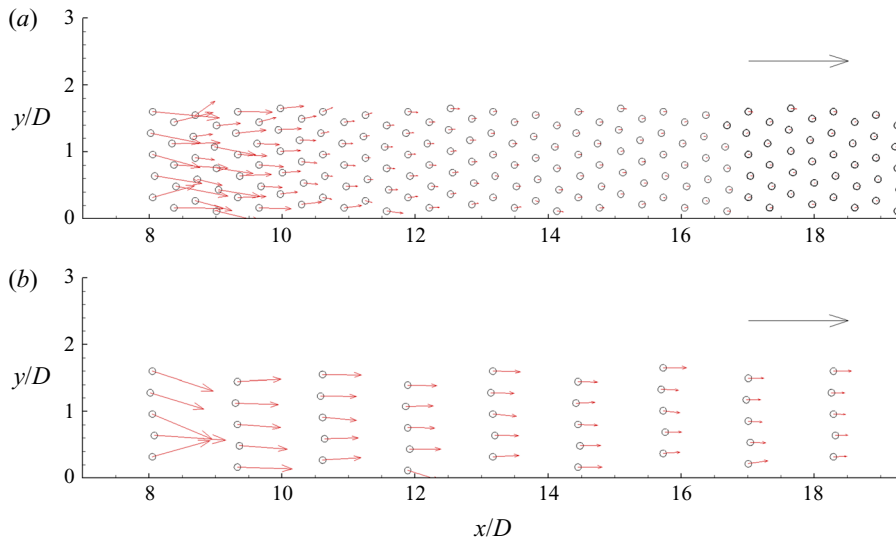


FIGURE 17. Mean non-dimensional drag force $\bar{F}^n / 0.5\rho U^2 dD$ acting on the solid cylinders situated close to the front face of the array ($8 < y/D < 19$). (a) $\phi = 0.08$, $aW = 1.63$, $d/D = 0.1$; (b) $\phi = 0.02$, $aW = 0.408$, $d/D = 0.1$. The black vector at the top right corner corresponds to the mean (streamwise) non-dimensional drag force predicted on an isolated solid cylinder of same diameter and for same Re_d .

starting with the second row of cylinders. The average non-dimensional streamwise drag force for the first row of cylinders, that are directly exposed to the incoming flow, is close to 1 for all simulations conducted with circular cylinders, which is approximately 15% lower than the value expected for an isolated cylinder of same shape at the same Re_d . This happens because the deceleration of the flow in front of the array is stronger than that observed around an isolated cylinder, as most of the cylinders situated close to the front face of the array contribute to the adverse pressure gradients that deflect the incoming flow moving toward the array. Figure 18(a) also allows estimating the streamwise distance from the front of the array needed for $\overline{F'_{DS}}$ to reach a close to constant regime. This distance increases from approximately $12D$ ($7.5W$) for $aW \approx 1.6$ to approximately $26D$ ($16.5W$) for $aW \approx 0.814$. Such a regime is not reached by the end of the array in the simulation with $aW = 0.408$, though extrapolation of simulation results suggests a value close to $40D$ – $50D$.

Information on the drag coefficients for the cylinders is important for theoretical models and numerical simulations that do not resolve the flow around the plant stems/cylinders forming the canopy/array. Tanino & Nepf (2008) have shown that for a fully vegetated channel containing rigid emerged cylinders, the cylinder streamwise drag coefficient defined with the mean streamwise velocity inside the array, C'_d , is a function of the cylinder Reynolds number, Re_c , and ϕ for the array. For constant ϕ , the decay of C'_d , with increasing Re_c was qualitatively similar to that observed for isolated cylinders but the drag coefficients were higher (see results for fully vegetated channels and isolated cylinders in figure 18b). A monotonic increase of C'_d , with increasing ϕ was observed for constant Re_c . The present data for rectangular emerged arrays of finite size show that a similar relationship can be established between C'_d , defined with \bar{u} as the local velocity scale inside the array, and $Re_c = \bar{u}d/\nu$ (see figure 18b). Away from the front (high Re_c

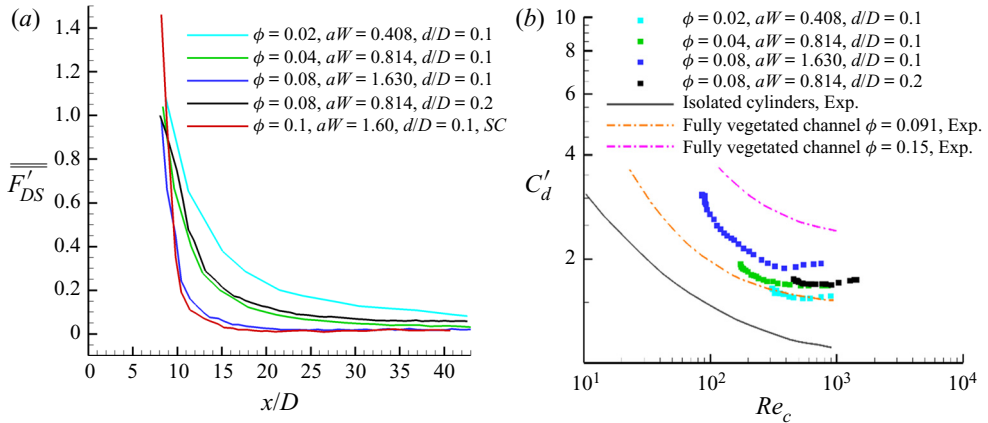


FIGURE 18. Streamwise drag forces acting on the cylinders forming the rectangular array. (a) Streamwise variation of the mean (spanwise-averaged) non-dimensional streamwise drag force acting on the solid cylinders, $\overline{F'_{DS}}$; (b) streamwise drag coefficient for the circular cylinders forming the array, C'_d vs. cylinder Reynolds number, Re_c , in log-log scale. Both C'_d and Re_c are defined with \bar{u} as the local velocity scale inside the array. Also included in (b) are curves for fully vegetated channels based on the experiments of Tanino & Nepf (2008) and the drag coefficient curve for a smooth, isolated, circular cylinder.

values) and the back (low Re_c values) of the array, the rate of decrease of C'_d with Re_c in the simulations conducted with circular cylinders is fairly close to the one determined experimentally by Tanino & Nepf (2008) for fully vegetated channels. Similar to the results of Tanino & Nepf (2008), C'_d increases with ϕ for constant d and Re_c . The numerical data suggest a monotonic increase of C'_d with aW for constant Re_c away from the front and back faces of the array.

The finite size of the array induces regions where the flow patterns around the cylinders and the pressure distributions on their surface are very different from those observed in an array occupying the whole channel. For many cylinders that are part of a finite-size emerged array, the mean drag force is not oriented along the streamwise axis of the channel. Moreover, for cylinders situated at about the same streamwise location, the mean streamwise drag force varies significantly across the span of the array. These effects scale mainly with the non-dimensional frontal area per unit volume of the array. For finite-size arrays, the local mean velocity inside the array is different for the cylinders forming the array. In fact, a physically correct and easy to use definition of this variable is impossible to propose for the cylinders situated near the lateral face of the array. For the front face cylinders, the drag coefficient defined with the approaching flow velocity upstream of the array is close to the value expected for isolated cylinders (e.g. close to 1 for the simulations conducted with circular cylinders). However, due to the sharp decay of \bar{u} with x/D starting at the front face of the array (figure 6), the values of C'_d are 50 %–100 % larger for the cylinders situated close to the front face compared to the value expected for isolated cylinders. Moreover, these values are up to 15 % higher than the ones one would expect based on extrapolating the C'_d vs. Re_c variation predicted for the cylinders situated away from the front and back faces of the constant ϕ array (figure 18b). Additionally, an increase of C'_d is observed for the cylinders with the lowest Re_c values in each simulation compared to the drag coefficients expected based on extrapolating the C'_d vs. Re_c variation predicted for the cylinders situated away from the front and back faces of the array. This effect is explained by the fact that in a finite-size array the streamwise drag force is not the same for

all the cylinders situated in the downstream part of the array where \bar{u} and Re_c reach their lowest values and are close to constant. Figure 18b can be used to approximatively estimate drag coefficients for rectangular arrays of different length and width and for different mean channel velocities.

8. Summary and conclusions

The presence of a high length-to-width aspect ratio rectangular array of emerged cylinders at one of the sidewalls of an open channel increases flow three-dimensionality and generates large-scale coherent structures. Most of the relevant flow variables describing flow and turbulence inside the array and the horizontal shear layer and the drag forces acting on the cylinders were found to be mainly a function of the non-dimensional frontal area per unit volume of the array. However, in some cases, marked differences in the streamwise variation of some of the global variables describing flow and turbulence structure inside the array and the horizontal shear layer were observed for arrays with similar aW values but with different diameters of the solid cylinders or for arrays with similar aW values containing solid cylinders of a different shape (e.g. circular vs. square cross-section).

Even if the array contained emerged cylinders, the vertical confinement of the flow in between the bed and the free surface generated strong mean-flow vertical motions especially close to the front face of the array where a downflow forms. As the front face of the array is permeable, the downflow penetrating inside the array induces downwelling inside the corridors of higher velocity magnitude formed in between the cylinders, especially in the region of strong flow divergence situated near the front face of the array. The lateral diversion of part of the incoming flow approaching the array generates downwelling inside the region of high flow acceleration bordering the upstream part of the horizontal shear layer. Meanwhile, strong upwelling is generated in the wakes of the cylinders situated close to the front face of the array and around those situated at its lateral face. For sufficiently high values of aW , a turbulent horseshoe vortex system forms around the upstream base of the array. Together with the vertical velocity fluctuations generated by the large-scale vortical eddies, these 3-D motions affect the availability of nutrients and position of regions where sediment is likely to deposit in the case of a patch of vegetation placed in a loose-bed channel.

Though the lateral face of the array is parallel to the streamwise direction, fluid leaves the array through this boundary over most of its length. The region where the mean transverse velocity component at the lateral interface is oriented toward the free-stream region is not limited to the strongly diverging flow region near the upstream corner of the array. For example, in the $aW = 1.6$ simulations approximately 50% of the flow entering the upstream face of the array leaves it through the diverging flow region, but an additional 30% leaves the array over the part of the lateral boundary where the mean (width- and depth-averaged) streamwise velocity inside the array continues to decay before reaching a constant regime. As aW decreases, the diverging flow region shrinks but the streamwise distance needed for the constant mean streamwise velocity regime to be reached inside the array increases, which means that the finite-length array loses fluid through a larger part of its lateral boundary. The streamwise variations of the streamwise velocity inside the array and of the width-averaged streamwise drag force acting on the cylinders forming the array were found to be mainly a function of aW . Similar to the case of fully vegetated channels, the drag coefficients for the cylinders forming the array were found to be a function of the local cylinder Reynolds number and the array density.

Similar to arrays of emerged circular cylinders placed away from the channel sidewalls, a wake region forms behind the array, the distance between the separated flow region

and the back face of the array increases with decreasing aW and the wake flow does not contain recirculation eddies for a sufficiently low aW . For constant aW , the increase in the diameter of the cylinders decreases the size of the separated flow region. The presence of the channel sidewall and the fact that only one shear layer forms if the array is placed adjacent to one of the sidewalls impede the formation and shedding of wake billows. Meanwhile, the shear layer vortices increase their size as they are advected past the end of the array and the distribution of the TKE inside the horizontal shear layer becomes more symmetrical with respect to its centreline defined as the position of the peak TKE.

A main finding of the present study is that the advection of vortices inside the shear layer triggers large-scale wave-like oscillatory motions inside the array. Regions of high and low streamwise velocity form some distance from the front face of the array even before the shear layer width becomes stabilized. Their frequency is approximately half that associated with the advection of the horizontal shear layer vortices. The streamwise velocity wave-like oscillations inside the array trigger the formation of patches of high and low bed friction velocity. In the lateral direction, these patches extend over the regions occupied by the array and the horizontal shear layer. Away from the front face of the array, the regions of highest instantaneous bed friction velocities correspond to the regions of higher streamwise velocities associated with the oscillatory motions. This finding has obvious consequences for sediment entrainment. Our analysis suggests that the formation of large-scale oscillatory motions and the associated effects on the bed shear stress distributions are a general characteristic of shear layers forming at the interface between a porous region and a free-stream region if the interface is fairly aligned with the mean-flow direction in the channel and the width of the porous region is much larger than the penetration width of the shear layer vortices inside the porous region.

The formation of strong upwelling regions at the back of the cylinders for which the local mean streamwise velocity around them is more than 30 % of the mean approaching channel flow velocity upstream of the array and of downwelling motions inside the upstream part of the shear layer(s) on the side(s) of the array appear to be a general characteristic of flow past an emerged array of cylinders, as similar 3-D effects were also observed for circular arrays (Chang *et al.* 2017). Moreover, upwelling and downwelling motions are not restricted to the region situated close to the front face of the array where the downflow forms. Present results for rectangular arrays with a large length-to-width ratio show that the magnitude of the dispersive momentum flux is significant with respect to that of the turbulent flux even away from the front face of the array. So, the momentum transfer within part of the array and near the interface with the free-flow region is affected by 3-D effects (e.g. upwelling and downwelling motions and the associated secondary flow) despite the fact that the geometrical layout would suggest a quasi-2-D flow. This is expected to also be the case for emerged patches of vegetation with a high length-to-width ratio present near one of the channel's banks even if the shape of the patch is not necessarily rectangular or very regular. For such cases, simplified (e.g. depth-averaged) approaches to numerically or theoretically model these flows and data analysis based on field measurements should account for the contribution of the dispersion flux terms to the streamwise (depth-averaged) momentum balance.

Acknowledgements

We gratefully acknowledge the National Center for High Performance Computing (NCHC) in Taiwan and TUBITAK ULAKBIM, High Performance and Grid Computing Center (TRUBA resources) for providing the computational resources needed to

conduct the simulations. G.C. also acknowledges partial support from the Deutsche Forschungsgemeinschaft (DFG) under grant no. SU 405/10.

Declaration of interests

The authors report no conflict of interest.

REFERENCES

- BASNET, K. & CONSTANTINESCU, G. 2017 The structure of flow around a porous vertical plate attached to a horizontal bed. *Phys. Fluids* **29** (11), 115101.
- BELCHER, S., JERRAM, N. & HUNT, J. 2003 Adjustment of a turbulent boundary layer to a canopy of roughness elements. *J. Fluid Mech.* **488** (1), 369–398.
- BENNETT, S. J., PIRIM, T. & BARKDOLL, B. D. 2002 Using simulated emergent vegetation to alter stream flow direction within a straight experimental channel. *Geomorphology* **44**, 115–126.
- BENNETT, S. J., WU, W., ALONSO, C. V. & WANG, S. S. 2008 Modelling fluvial response to in-stream woody vegetation: implications for stream corridor restoration. *Earth Surf. Process. Landf.* **33**, 890–909.
- BROWAND, F. & WEIDMAN, P. 1976 Large scales in the developing mixing layer. *J. Fluid Mech.* **76**, 127–141.
- CARR, G. M., DUTHIE, H. C. & TAYLOR, W. D. 1997 Models of aquatic plant productivity: a review of the factors that influence growth. *Aquat. Bot.* **59**, 195–215.
- CHANG, K. S. & CONSTANTINESCU, G. 2015 Numerical investigation of flow and turbulence structure through and around a circular array of rigid cylinders. *J. Fluid Mech.* **776**, 161–199.
- CHANG, K., CONSTANTINESCU, G. & PARK, S. O. 2007 Assessment of predictive capabilities of detached eddy simulation to simulate flow and mass transport past open cavities. *Trans. ASME J. Fluids Engng* **129** (11), 1372–1383.
- CHANG, W. Y., CONSTANTINESCU, G. & TSAI, W. Y. 2017 On the flow and coherent structures generated by an array of rigid emerged cylinders placed in an open channel with flat and deformed bed. *J. Fluid Mech.* **831**, 1–40.
- CHANG, W. Y., CONSTANTINESCU, G. & TSAI, W. F. 2020 Effect of array submergence on flow and coherent structures through and around a circular array of rigid vertical cylinders. *Phys. Fluids* **32**, 035110.
- CHEN, Z., JIANG, H. & NEPF, H. 2013 Flow adjustment at the leading edge of a submerged aquatic canopy. *Water Resour. Res.* **49**, 5537–5551.
- CHEN, Z., ORTIZ, A., ZONG, L. & NEPF, H. 2012 The wake structure behind a porous obstruction and its implications for deposition near a finite patch of emergent vegetation. *Water Resour. Res.* **48**, W09517.
- CHENG, Z. & CONSTANTINESCU, G. 2020 Near-field and far-field structure of shallow mixing layers. *J. Fluid Mech.* **904**, A21.
- CHENG, Z., KOKEN, M. & CONSTANTINESCU, G. 2018 Approximate methodology to account for effects of coherent structures on sediment entrainment in RANS simulations with a movable bed and applications to pier scour. *Adv. Water Resour.* **120**, 65–82.
- CHU, V. H. & BABARUTSI, S. 1988 Confinement and bed-friction effects in shallow turbulent mixing layers. *J. Hydraul. Engng ASCE* **114**, 1257–1274.
- CIRAOLO, G., FERRERI, G. & LALOGGIA, G. 2006 Flow resistance of *Posidonia oceanica* in shallow water. *J. Hydraul. Res.* **44** (2), 189–202.
- CONSTANTINESCU, G. 2014 LE of shallow mixing interfaces: a review. *Environ. Fluid Mech.* **14**, 971–996.
- CUI, J. & NEARY, V. S. 2002 Large eddy simulation (LES) of fully developed flow through vegetation. In *Hydroinformatics 2002: Proceedings of the Fifth International Conference on Hydroinformatics, Cardiff, UK*, pp. 39–44.
- DEFINA, A. & BIXIO, A. C. 2005 Mean flow and turbulence in vegetated open channel flow. *Water Resour. Res.* **41**, W07006.
- DUBIEF, Y. & DELCAYRE, F. 2000 On coherent-vortex identification in turbulence. *J. Turbul.* **1**, N11.

- FINNIGAN, J. 2000 Turbulence in plant canopies. *Annu. Rev. Fluid Mech.* **32**, 519–571.
- FOLLETT, E. & NEPF, H. 2012 Sediment patterns near a model patch of reedy emergent vegetation. *Geomorphology* **179**, 141–151.
- GHISALBERTI, M. & NEPF, H. 2002 Mixing layers and coherent structures in vegetated aquatic flows. *J. Geophys. Res. Oceans* **107** (C2), 3011.
- GHISALBERTI, M. & NEPF, H. 2004 The limited growth of vegetated shear layers. *Water Resour. Res.* **40**, W07502.
- GURNELL, A. M. 2014 Plants as river system engineers. *Earth Surf. Process. Landf.* **39** (1), 4–25.
- HAMED, A. M., SADOWSKI, M. J., NEPF, H. M. & CHAMORRO, L. P. 2017 Impact of height heterogeneity on canopy turbulence. *J. Fluid Mech.* **813**, 1176–1196.
- HUALI, W., XUE, W. & QIAN, Z. 2015 Large-eddy simulation of turbulent rectangular open-channel flow with an emerged rigid vegetation patch. *Adv. Water Resour.* **80**, 30–42.
- KIM, S. J. & STOEISSER, T. 2011 Closure modelling and direct simulation of vegetation drag in flow through emerged vegetation. *Water Resour. Res.* **47**, W10511.
- KING, A. T., TINOCO, R. O. & COWEN, E. A. 2012 A k - ϵ turbulence model based on the scales of vertical shear and stem wakes valid for emergent and submerged vegetated flows. *J. Fluid Mech.* **701**, 1–39.
- KIRKIL, G. & CONSTANTINESCU, G. 2015 Effects of cylinder Reynolds number on the turbulent horseshoe vortex system and near wake of a surface-mounted circular cylinder. *Phys. Fluids* **27**, 075102.
- KOKEN, M. & CONSTANTINESCU, G. 2009 An investigation of the dynamics of coherent structures in a turbulent channel flow with a vertical sidewall obstruction. *Phys. Fluids* **21**, 085104.
- KRAFT, S., WANG, Y. & OBERLACK, M. 2011 Large eddy simulation of sediment deformation in a turbulent flow by means of level-set method. *ASCE J. Hydraul. Engng* **137** (11), 1394–1405.
- LEONARD, L. & LUTHER, M. 1995 Flow hydrodynamics in tidal marsh canopies. *Limnol. Oceanogr.* **40** (8), 1474–1484.
- LIU, D., DIPLAS, P., FAIRBANKS, J. D. & HODGES, C. C. 2008 An experimental study of flow through rigid vegetation. *J. Geophys. Res.-Earth Sci.* **113**, 1–16.
- LOPEZ, F. & GARCIA, M. C. 2001 Mean flow and turbulence structure of open-channel flow through non-emergent vegetation. *ASCE J. Hydraul. Engng* **127** (5), 392–402.
- MARKFORT, C. D., PORTÉ-AGEL, F. & STEFAN, H. G. 2014 Canopy-wake dynamics and wind sheltering effects on Earth surface fluxes. *Environ. Fluid Mech.* **14** (3), 663–697.
- MARJORIBANKS, T. I., HARDY, R., LANE, S. & TANCOCK, M. 2016 Patch-scale representation of vegetation within hydraulic models. *Earth Surf. Process. Landf.* **42** (5), 699–710.
- MAZA, M., LARA, J. L. & LOSADA, I. J. 2015 Tsunami wave interaction with mangrove forests: a 3-D numerical approach. *Coast. Engng* **98**, 33–54.
- MILLER, M. C., MCCAVE, I. N. & KOMAR, P. D. 1977 Threshold of sediment motion under unidirectional currents. *Sedimentology* **24**, 507–527.
- MONTI, A., OMIDYEGANEH, M., ECKHARDT, B. & PINELLI, A. 2020 On the genesis of different regimes in canopy flows: a numerical investigation. *J. Fluid Mech.* **891**, A9.
- MONTI, A., OMIDYEGANEH, M. & PINELLI, A. 2019 Large-eddy simulation of an open-channel flow bounded by a semi-dense rigid filamentous canopy: scaling and flow structure. *Phys. Fluids* **31**, 065108.
- MUNSON, B., OKIISHI, T., HUEBSCH, W. & ROTHMAYER, A. 2012 *Fundamentals of Fluid Mechanics*, 7th edn. Wiley.
- NAOT, D., NEZU, I. & NAKAGAWA, H. 1996 Hydrodynamic behavior of partly vegetated open channels. *ASCE J. Hydraul. Engng* **122** (11), 625–633.
- NEARY, V. S. 2003 Numerical solution of fully developed flow with vegetative resistance. *J. Engng Mech. ASCE* **129** (5), 558–563.
- NEPF, H. M. 2012 Flow and transport in regions with aquatic vegetation. *Annu. Rev. Fluid Mech.* **44**, 123–142.
- NEPF, H. & VINONI, E. R. 2000 Flow structures in depth-limited, vegetated flows. *J. Geophys. Res.* **105** (C2), 28527–28546.
- NEZU, I. & ONITSUKA, K. 2000 Turbulent structures in partly vegetated open channel flows with LDA and PIV measurements. *J. Hydraul. Res.* **39**, 629–642.

- NICHOLAS, A. P. & MCLELLAND, S. J. 2004 Computational fluid dynamics modelling of three-dimensional processes on natural river floodplains. *J. Hydraul. Res.* **42**, 131–143.
- OKAMOTO, T. & NEZU, I. 2010 Large eddy simulation of 3-D flow structure and mass transport in open channel flows with submerged vegetations. *J. Hydraul. Res.* **49**, 185–197.
- POGGI, D., KATUL, G. G. & ALBERTSON, J. D. 2004 A note on the contribution of dispersive fluxes to momentum transfer within canopies. *Boundary-Layer Meteorol.* **111**, 615–621.
- RAUPACH, M., FINNIGAN, J. & BRUNET, Y. 1996 Coherent eddies and turbulence in vegetation canopies: the mixing layer analogy. *Boundary-Layer Meteorol.* **78**, 351–382.
- ROMINGER, J. T. & NEPF, H. 2011 Flow adjustment and interior flow associated with a rectangular porous obstruction. *J. Fluid Mech.* **680**, 636–659.
- SAND-JENSEN, K. 1998 Influence of submerged macrophytes on sediment composition and near-bed flow in lowland streams. *Freshwat. Biol.* **39**, 663–679.
- SAND-JENSEN, K. & MADSEN, T. V. 1992 Patch dynamics of the stream macrophyte, *Callitriche cophocarpa*. *Freshwat. Biol.* **27** (2), 277–282.
- SARSU, S., DOPPLER, D., JEROME, J., RIVIERE, N. & LANCE, M. 2016 Drag measurements in laterally confined 2D canopies: reconfiguration and sheltering effect. *Phys. Fluids* **28**, 107101.
- SCHULTZ, M., KOZERSKI, H.-P., PLUNTKE, T. & RINKE, K. 2003 The influence of macrophytes on sedimentation and nutrient retention in the lower river spree. *Water Resour. Res.* **37**, 569–578.
- SIMON, A., BENNETT, S. J. & NEARY, V. S. 2004 Riparian vegetation and fluvial geomorphology: problems and opportunities. In *Riparian Vegetation and Fluvial Geomorphology* (ed. S. J. Bennett & A. Simon), pp. 1–10. AGU.
- SPALART, P. 2009 Detached eddy simulation. *Annu. Rev. Fluid Mech.* **41**, 181–202.
- STOESSER, T., KIM, S. J. & DIPLAS, P. 2010 Turbulent flow through idealized emergent vegetation. *ASCE J. Hydraul. Engng* **136** (12), 1003–1017.
- SUKHODOLOV, A. & SUKHODOLOVA, T. 2010 Case study: effect of submerged aquatic plants on turbulence structure in a lowland river. *J. Hydraul. Engng* **136** (7), 434–446.
- SUKHODOLOVA, T. & SUKHODOLOV, A. 2012a Vegetated mixing layer around a finite-size patch of submerged plants: 1. Theory and experiments. *Water Resour. Res.* **48**, W10533.
- SUKHODOLOVA, T. & SUKHODOLOV, A. 2012b Vegetated mixing layer around a finite-size patch of submerged plants: 2. Turbulence statistics and structures. *Water Resour. Res.* **48**, W12506.
- SUKHODOLOV, A. & SUKHODOLOVA, T. 2014 Shallow wake behind exposed wood-induced bar in a gravel-bed river. *Environ. Fluid Mech.* **14** (5), 1071–1083.
- SUMER, B. M., CHUA, L. H., CHENG, N. S. & FREDSE, J. 2003 Influence of turbulence on bed load sediment transport. *J. Hydraul. Engng ASCE* **129** (8), 585–596.
- TANINO, Y. & NEPF, H. 2008 Laboratory investigation of mean drag in a random array of rigid, emerged cylinders. *J. Hydraul. Engng ASCE* **134**, 34–41.
- TINOCO, R. O. & COCO, G. 2016 A laboratory study on sediment resuspension within arrays of rigid cylinders. *Adv. Water Resour.* **92**, 1–9.
- WHITE, B. L. & NEPF, H. 2007 Shear instability and coherent structure in shallow flow adjacent to a porous layer. *J. Fluid Mech.* **593**, 1–32.
- YAN, C., NEPF, H., HUANG, W. X. & CUI, G. X. 2017 Large eddy simulation of flow and scalar transport in a vegetated channel. *Environ. Fluid Mech.* **17**, 497–519.
- YANG, J. Q., CHUNG, H. & NEPF, H. 2016 The onset of sediment transport in vegetated channels predicted by turbulent kinetic energy. *Geophys. Res. Lett.* **43** (11), 261–268.
- ZDRAVKOVICH, M. M. 1997 *Flow Around Circular Cylinders, Volume 1 Fundamentals*. Oxford University Press.
- ZONG, L. & NEPF, H. 2011 Spatial distribution of deposition within a patch of vegetation. *Water Resour. Res.* **47**, W03516.
- ZONG, L. & NEPF, H. 2012 Vortex development behind a finite porous obstruction in a channel. *J. Fluid Mech.* **691**, 368–391.