

## Research Article

\*These authors contributed equally.

**Cite this article:** Červená B *et al* (2022). The winner takes it all: dominance of *Calicophoron daubneyi* (Digenea: Paramphistomidae) among flukes in Central European beef cattle. *Parasitology* **149**, 612–621. <https://doi.org/10.1017/S0031182021002158>

Received: 17 November 2021

Revised: 17 December 2021

Accepted: 26 December 2021

First published online: 24 February 2022








**Key words:**

*Calicophoron*; cattle; flukes;  
Paramphistomidae; parasite distribution

**Author for correspondence:**

Barbora Červená,  
E-mail: [bara.cervena@gmail.com](mailto:bara.cervena@gmail.com)

# The winner takes it all: dominance of *Calicophoron daubneyi* (Digenea: Paramphistomidae) among flukes in Central European beef cattle

Barbora Červená<sup>1,2</sup> , Lucia Anettová<sup>1,3,\*</sup> , Eva Nosková<sup>1,3,\*</sup> ,  
Barbora Pařčů<sup>1,2</sup> , Ilona Pšenková<sup>1</sup>, Kristýna Javorská<sup>1</sup> , Pavla Příhodová<sup>4</sup>,  
Jana Ježková<sup>4</sup> , Petr Václavěk<sup>4</sup>, Kamil Malát<sup>5</sup> and David Modrý<sup>1,3,6,7</sup> 

<sup>1</sup>CEITEC VETUNI, University of Veterinary Sciences, Palackého tř. 1946/1, 612 42 Brno, Czech Republic; <sup>2</sup>Institute of Vertebrate Biology, Czech Academy of Sciences, Květná 8, 603 65 Brno, Czech Republic; <sup>3</sup>Department of Botany and Zoology, Faculty of Science, Masaryk University, Kotlářská 2, 611 37 Brno, Czech Republic; <sup>4</sup>State Veterinary Institute Jihlava, Rantířovská 93/20, 586 01 Jihlava, Czech Republic; <sup>5</sup>Czech Beef Cattle Association, Těšnov 17, 110 00 Praha 1, Czech Republic; <sup>6</sup>Biology Centre, Institute of Parasitology, Czech Academy of Sciences, Branišovská 31, 370 05 České Budějovice, Czech Republic and <sup>7</sup>Department of Veterinary Sciences, Faculty of Agrobiological, Food and Natural Resources/CINeZ, Czech University of Life Sciences Prague, Kamýcká 129, 165 00 Praha 6-Suchbát, Czech Republic

**Abstract**

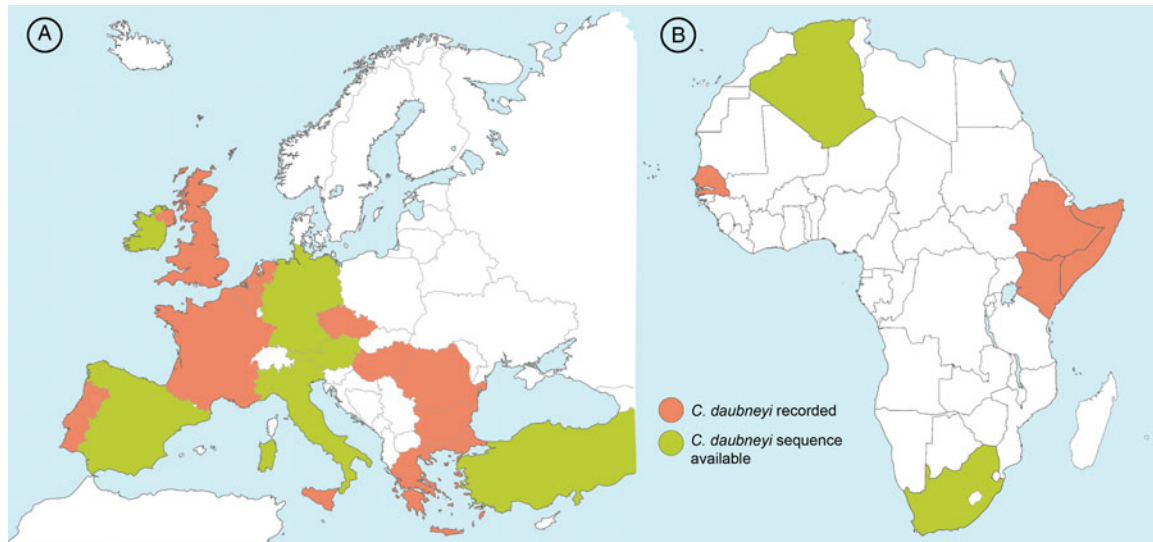
In Europe, paramphistomosis caused by *Paramphistomum* spp. was historically regarded as being of minor importance. However, *Calicophoron daubneyi* has recently been recognized as an emerging pathogen in Europe due to its increasing prevalence and negative impact on livestock production. In search for paramphistomid flukes, 5573 beef cattle fecal samples from 115 farms across the whole Czech Republic were examined from March 2019 to June 2021. The eggs of paramphistomid flukes were identified in 29.9% of samples. Internal transcribed spacer 2 sequences from 90 adult flukes and 125 fecal samples collected across Czech Republic confirmed *C. daubneyi* infection in the Czech beef cattle. Ninety mitochondrial DNA sequences obtained from adult *C. daubneyi* specimens revealed 13 individual haplotypes, two of them recorded for the first time. Although *C. daubneyi* is a new parasite in beef cattle herds in the Czechia, it clearly dominates the parasitological findings in the country's beef cattle. The common occurrence of *C. daubneyi* in most of the beef cattle herds indicates environmental conditions suitable also for the life cycle of *Fasciola hepatica* and risk of its emergence.

**Introduction**

Trematodes of the family Paramphistomidae, known under the common name rumen fluke, are small pink pear-shaped concave amphistome flukes with two suckers, that infect a broad range of mammalian hosts including cattle, zebu, water buffalo, sheep, goats, deer and also llama and alpaca, and might have a significant impact on livestock productivity (Eduardo, 1983; Deplazes *et al.*, 2016; Mitchell *et al.*, 2021). Even though adult rumen flukes are usually well tolerated (Taylor *et al.*, 2007), heavy infestation with the immature flukes can result in illness associated with the intestinal phase of the infection, usually termed acute larval paramphistomosis. It is a result of duodenal mucosa erosion (Taylor *et al.*, 2007; Millar *et al.*, 2012) and can manifest with dehydration, anaemia, hypoproteinaemia and submandibular oedema (Tilling, 2013). Severe cases are most prevalent in calves, while sheep and goats can exhibit clinical signs throughout their lives (Mason *et al.*, 2012).

Paramphistomids have a complex life cycle involving aquatic or mud snails as intermediate hosts producing cercariae (Tilling, 2013; Horák *et al.*, 2019; Mitchell *et al.*, 2021). Ruminants become infected by ingestion of metacercariae attached to grass while grazing or the floating metacercariae may be swallowed while drinking (Rondelaud *et al.*, 2004). After excystation in the small intestine, young paramphistomes migrate 'upstream' and attach in the rumen, where they mature and lay eggs, which leave the host in feces (Fenimore *et al.*, 2021).

Although rumen flukes are spread worldwide, paramphistomosis has been most common in temperate and tropical regions (mostly Asia, Africa and Australia), mainly in wet or flooded areas (Pfukenyi and Mukaratirwa, 2018). In Europe, paramphistomosis was historically regarded as being of minor importance. While the earlier studies from the middle of the 20th century report various *Paramphistomum* species, mostly *Paramphistomum cervi* and/or *Paramphistomum leydeni* in both cattle and game animals (Guilhon and Priouzeau, 1945; Willmott, 1950; Kotlán, 1958; Deiana and Arru, 1963; Chroust, 1964; Kotrlá and Kotrlý, 1982), more recent publications, especially from Western Europe, report predominantly *Calicophoron daubneyi* (Gordon *et al.*, 2013; Zintl *et al.*, 2014; Malrait *et al.*, 2015; Huson *et al.*, 2017; Jones *et al.*, 2017; Wenzel *et al.*, 2019; Bosco *et al.*, 2021). This parasite



**Fig. 1.** Distribution of *Calicophoron daubneyi* in Europe (A) and Africa (B). The parasite was first described in cattle from the Kenyan highlands (Dinnik, 1962). Since then, *C. daubneyi* has been reported from cattle, zebu, water buffalo, sheep, moufflons, alpaca and llama across Africa and also Europe (red). However, DNA sequences are available only from a few countries (green). In the UK and Netherlands, the parasite's identity was confirmed by DNA (Ploeger *et al.*, 2017; Mitchell *et al.*, 2021); however, the sequences are not available. The map was created based on sequences published in GenBank and following literature: Dinnik (1962), Sey (1974, 1978), Sey and Vishnyakov (1976), Sey and Arru (1977), Graber *et al.* (1978, 1980), Kotrlá and Kotrlý (1982), Eduardo (1983), Abrous *et al.* (2000), Seck *et al.* (2008), Titi *et al.* (2010), Arias *et al.* (2011), González-Warleta *et al.* (2013), Ferreras *et al.* (2014), Zintl *et al.* (2014), Malrait *et al.* (2015), Sanna *et al.* (2016), Jones *et al.* (2017), Ploeger *et al.* (2017), O'Shaughnessy *et al.* (2018), Wenzel *et al.* (2019), Ates and Umur (2021), Bosco *et al.* (2021), Mitchell *et al.* (2021), Padak and Karakus (2021) and Wiedermann *et al.* (2021). The maps were adjusted from <https://www.mapsof.net/europe/europe-countries-map-blank?image=full> and <https://commons.wikimedia.org/wiki/File:BlankMap-Africa.svg>.

was originally described in the Kenyan highlands (Dinnik, 1962); however, its known distribution range spans a large part of Europe and several African countries (Fig. 1). *Calicophoron daubneyi* infects mostly lymnaeid snails, typically *Galba truncatula* as its intermediate host, which allows the species to spread in the temperate climate (Sey, 1979; Abrous *et al.*, 1996; Jones *et al.*, 2015) and possibly outcompete the liver fluke *Fasciola hepatica* in the same host. Although the adults are thought to be well tolerated, cases of severe or even fatal disease outbreaks linked to heavy burdens by immature flukes have been reported across Europe (Mason *et al.*, 2012; Millar *et al.*, 2012). With its increasing prevalence and negative impact on livestock production resulting in decreased milk yields and growth rates, *C. daubneyi* has been recognized as an emerging pathogen in Europe (Huson *et al.*, 2017).

The history of paramphistomosis in Czech Republic is comparable with the situation observed in Western Europe. Early studies from the 1950s and 1960s reported occasional occurrence of *P. cervi* in game animals (Erhardová and Kotrlý, 1955; Páv *et al.*, 1962) and acute paramphistomosis in young beef cattle (Chroust, 1964). Later, the spectrum was extended by *Paramphistomum ichikawai* and *P. leydeni* (Kotrlá and Chroust, 1978; Kotrlá and Kotrlý, 1982), however, the significance of paramphistomes was considered low as clinical signs and/or negative effect on milk/meat production were rarely observed. The latter study also reported occurrence of *Calicophoron* (formerly *Paramphistomum*) *daubneyi* in two moufflons from Eastern Bohemia (Kotrlá and Kotrlý, 1982). At the turn of the 20th century, paramphistomosis was still considered of minor significance (Chroust, 2000, 2006).

Identification of paramphistomid flukes by traditional morphology and morphometry is quite complicated and a thorough examination of histological sections is required (Eduardo, 1982). On the contrary, DNA barcoding of the internal transcribed spacer 2 (ITS2) region represents a tool allowing identification to the species level also in the case of eggs in fecal samples as the source of the DNA (Mitchell *et al.*, 2021). In this study, we

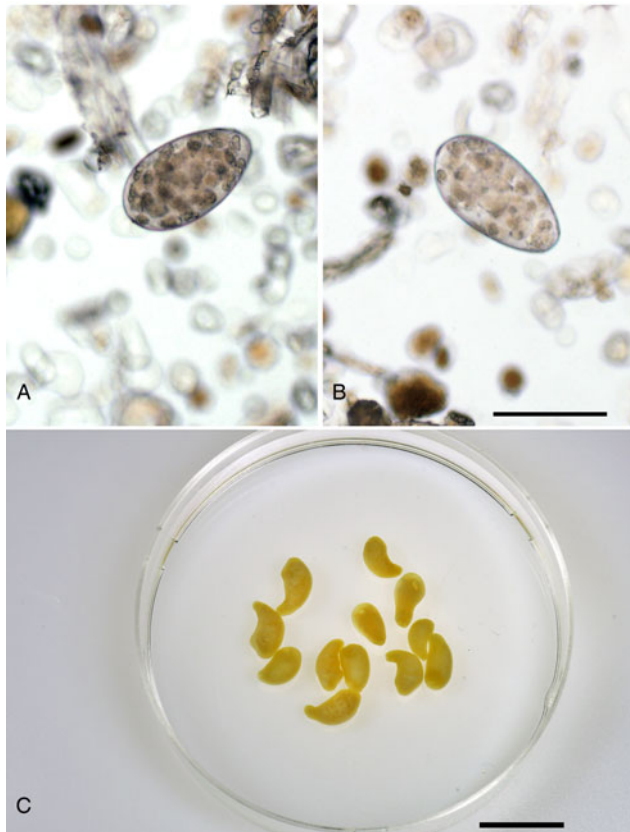
aimed to investigate the prevalence and diversity of paramphistomid flukes in beef cattle herds across Czech Republic. In cooperation with beef farmers, we carried out large-scale coproscopic analyses to determine the prevalence of paramphistomid flukes and subsequently amplified the ITS2 region for species determination. The genetic diversity of the *C. daubneyi* population was evaluated using mitochondrial DNA (mtDNA) analysis.

## Materials and methods

### Fecal sample collection and coproscopy

The samples were collected by farmers using a sample collection kit provided within the project 'Monitoring of strongylids involved in helminthiasis of beef cattle in the Czech Republic and analysis of anthelmintic resistance and diversity', implemented by the CEITEC VETUNI, University of Veterinary Sciences Brno (VETUNI), State Veterinary Institute Jihlava (SVI) and Czech Beef Cattle Association, and by the project team during visits to selected farms. Samples were collected as fresh as possible from the pastures, barns or directly from rectum during regular veterinary interventions in compliance with national ethical standards on animal handling. Samples were immediately transported to the project laboratories or sent by farmers using commercial parcel delivery services.

All fecal samples were processed by modified Sheather's sugar flotation (Sheather, 1923), simple sedimentation and Vajda's larvoscopy (Hovorka, 1954). For the flotation, walnut size of feces was homogenized with water using a mortar and pestle, sieved to a tube and centrifuged at 2000 rpm for 3 min. The supernatant was discarded and a sugar solution of specific gravity 1.33 was added to the fecal sediment, vortexed and centrifuged again as described above. A surface film containing parasite stages was transferred onto a slide using inoculation loop, covered with a cover slip and examined under a light microscope. Approximately 3 g of feces were wrapped in a square of one layer gauze and put onto a small Petri dish with warm water



**Fig. 2.** *Calicophoron daubneyi* detected in Czech beef cattle herds. (A, B) Eggs detected by sedimentation technique, scale bar = 100  $\mu$ m. (C) Adult flukes from rumen of a slaughtered cow from South Bohemia, preserved, scale bar = 1 cm.

(ca. 40°C). After 1 h, feces were removed, and the Petri dish was searched for emerged L1 larvae under a light microscope. Trematode eggs were detected by sedimentation, when the feces were mixed with 30 mL water, homogenized and sieved into a 50 mL beaker. After 12 min, the supernatant was decanted and the beaker with fecal sediment was filled again with water. This procedure was repeated every 10 min, until the supernatant was clean. After the last sedimentation cycle, the remaining 1–2 mL fecal sediment was poured into a small Petri dish and examined under a microscope to detect trematode eggs (Foreyt, 2002; Deplazes *et al.*, 2016). An Olympus BX41 microscope was used for examination of all samples. Photographs were taken on an Olympus BX53 equipped with a DP73 digital camera. Aliquots of ca. 5 g of selected fecal samples were stored at –20°C to create a biobank of material for subsequent DNA extraction.

### Collection of adult rumen flukes

Adult paramphistomid flukes were collected from the rumen and reticulum of beef cattle at the abattoir during regular veterinary inspection. Protocol with the information about the host animal and the farm of origin was completed. Intensity of infection was classified using four categories:

- +, sporadic occurrence of adult rumen flukes
- ++, 100–1000 adults
- +++, 1000–10 000 adults
- ++++, mucosa (almost) continuously covered by adult flukes.

Several individuals of the rumen fluke were collected from each animal separately to a sterile vial and frozen at –20°C upon arrival to the laboratory.

### DNA extraction

Selected fecal samples with observed paramphistomid eggs were used for the whole DNA extraction using the DNeasy PowerSoil Pro Kit (Qiagen, Hilden, Germany) with the following modifications: (1) homogenizing of samples on the vortex was extended to 30 min, (2) incubation with C2 solution was extended to 30 min and (3) incubation with C3 solution was extended to be overnight. The DNA was eluted to 100  $\mu$ L elution buffer included in the kit.

A NucleoSpin Tissue kit (Macherey-Nagel, Düren, Germany) was used for DNA extraction from individual adult paramphistomid flukes. Whole specimens were disrupted using a sterile micro-pestle and lysed in proteinase K overnight. In the final step, the DNA was eluted to 100  $\mu$ L elution buffer.

### DNA amplification

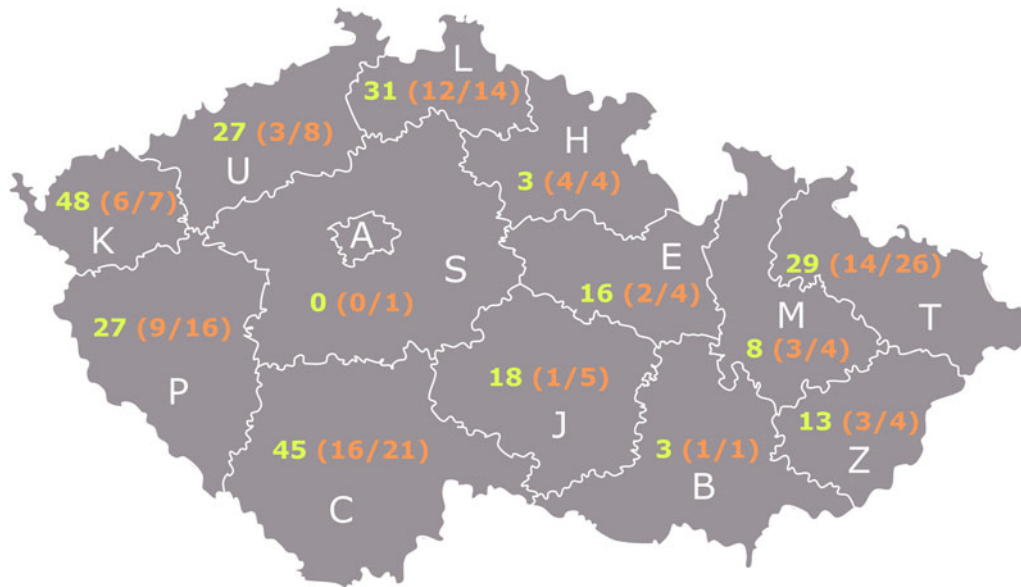
The second internal transcribed spacer region (ITS2) was amplified from both total fecal DNA and adult flukes. A total volume of 25  $\mu$ L polymerase chain reaction (PCR) mixture contained 12.5  $\mu$ L PCR BIO Taq mix red (PCR Biosystems Ltd., London, UK) and 1.25  $\mu$ L 10  $\mu$ M each GA1 (5'-AGAACATCGACATCTTGAAC-3') and BD2 (5'-TATGCTTAAATTCAGCGGGT-3') primers (Luton *et al.*, 1992; Anderson and Barker, 1998; Lotfy *et al.*, 2010). The template DNA volume was 2 and 1  $\mu$ L for the fecal DNA and adult helminth DNA, respectively, and 8 and 9  $\mu$ L PCR-grade distilled water was used to complete the PCR mixture accordingly. Cycling conditions were as follows: initial denaturation 1 min at 95°C followed by 36 cycles of 15 s at 95°C denaturation, 15 s at 55°C annealing and 7 s at 72°C extension with final extension 2 min at 72°C.

A 855 bp fragment of mtDNA spanning 3' end of cytochrome c oxidase subunit I gene (*cox1*), tRNA for threonine and 5' end of mitochondrial rRNA large subunit (16S rRNA), which will be herein referred to as 'mtDNA', was amplified from the adult helminth DNA by primers Cd\_Cox1F (5'-GCCGGGTCCTC AACATAATA-3') and Cd\_Cox1R (5'-AGCACAAAATCCTGATCTTACCA-3') (Martínez-Ibeas *et al.*, 2013). The same composition of the PCR reaction (25  $\mu$ L) as for ITS2 amplification from the adults was used. Cycling conditions were as follows: initial denaturation 1 min at 95°C followed by 36 cycles of 15 s at 95°C denaturation, 15 s at 55°C annealing and 15 s at 72°C extension with final extension 5 min at 72°C.

All products were separated by electrophoresis in 1% agarose gel stained with Midori Green Advance (Nippon Genetics, Düren, Germany) and visualized on a UV transilluminator. PCR products were purified with ExoSAP-IT (Affymetrix, ThermoFisher Scientific, Czech Republic). If multiple bands were present, the bands of the expected size were cut from the gel and purified by using a PCR Cleanup kit (Geneaid Biotech Ltd., New Taipei, Taiwan). The products were sequenced commercially at MacroGen Europe (Amsterdam, Netherlands) using the amplification primers.

### Sequence analyses

Sequences were checked, trimmed manually and assembled in Geneious Prime 2021.0.1 (<http://www.geneious.com>) and checked against BLAST (Altschul *et al.*, 1990). A median-joining network (Bandelt *et al.*, 1999) was derived from mtDNA sequences using PopART (Leigh and Bryant, 2015). Sequences of other paramphistomid trematodes were downloaded from GenBank, aligned with the obtained sequences using Clustal Omega implemented in Geneious Prime. Pairwise sequence distances were calculated from these alignments. The maximum-likelihood phylogenetic trees (ITS2, mtDNA) were calculated by IQ-TREE (Trifinopoulos *et al.*, 2016). The most suitable model was chosen



**Fig. 3.** Percentage of fecal samples (green) and number of farms (in the parentheses) where paramphistomes were detected by coproscopy (left) out of the total number of farms participating (right) in the regions of Czech Republic. Regions A – Praha, B – South Moravian, C – South Bohemian, E – Pardubice, H – Hradec Králové, J – Vysočina, K – Karlovy Vary, L – Liberec, M – Olomouc, P – Plzeň, S – Central Bohemian, T – Moravian-Silesian, U – Ústí nad Labem, Z – Zlín. Adjusted from: CC BY-SA 3.0, <https://commons.wikimedia.org/w/index.php?curid=912955>.

by ModelFinder (Kalyaanamoorthy *et al.*, 2017) implemented in IQ-TREE based on the highest Bayesian information criterion scores and weights. The tree topology was tested by 1000 replicates of ultrafast bootstrap (Minh *et al.*, 2013), Shimodaira–Hasegawa (SH)-like approximate likelihood ratio test and approximate Bayes test (Anisimova *et al.*, 2011).

## Results

### Paramphistomid flukes detected in most of Czech Republic regions

From March 2019 to June 2021, a total of 115 farms across the whole Czech Republic participated in the project and 5573 beef cattle fecal samples were sent to the laboratories of VETUNI and SVI. All but one of Czech Republic regions were represented between 1 and 26 farms per region. The number of samples per region varied from 34 in South Moravian Region (B) to 1299 in South Bohemian Region (C). Stages of at least one parasite were detected in 4752 samples (85.3%). The typical eggs of paramphistomid flukes (Fig. 2A and B) were identified in a total of 1668 fecal samples (29.9%); in 450 samples the paramphistomids were the only parasite detected. Paramphistomid flukes were detected in more than half of the participating farms (64%) in all but one region (S). The highest number of positive farms and samples was in the South Bohemian Region (Fig. 3). Percentage of positive samples varied among farms from 0.8 to 100%. In 24 farms (31.1%), more than 65% of the fecal samples were positive. These farms were in six regions: C ( $n = 8$ ), K ( $n = 1$ ), L ( $n = 2$ ), P ( $n = 2$ ), T ( $n = 7$ ) and U ( $n = 3$ ). In 25 farms (33.8%), paramphistomid eggs were detected in <20% samples. In the remaining 26 farms (35.1%), the percentage of positive samples was in the range of 21–60%. One to three samples from paramphistomid fluke-positive farms were selected for subsequent DNA barcoding.

### DNA barcoding showed all adult rumen flukes to be *C. daubneyi*

Adult rumen flukes (Fig. 2C) were collected from 90 animals originating from 78 farms in 11 regions (Table 1). The intensity of

infection was evaluated in 56 host individuals. Most commonly (64%), light intensity of infection (++) was observed. In 12 animals, heavy infection with 1000–10 000 adult flukes was reported and one animal scored ++++ corresponding to rumen mucosa being (almost) completely covered by flukes.

The ITS2 region (269–358 bp) was amplified in 88 *C. daubneyi* adult flukes originating from 77 farms in 11 regions. All sequences were identical. BLAST search showed 100% identity to two previously published sequences of *C. daubneyi* from Ireland (KP201674.1) and Italy (AY790883) and to nine *C. daubneyi* sequences directly submitted to GenBank originating from Turkey (MN044947.1), Algeria (LN610457-8.1) and South Africa (KT182091-96.1). The consensus sequence was submitted to GenBank under the accession number OL461703.

Ninety sequences (605–803 bp) of mtDNA were obtained from adult *C. daubneyi* specimens originating from 78 farms in 11 regions of Czech Republic (Fig. 3). In total, 13 individual haplotypes labelled CD1–CD13 and differing by 0.1–1.9% were recognized (Table 1). While haplotype CD13 was detected only in one region (C), haplotypes CD7 and CD12 were found in five districts. In the South Bohemian Region (C), 11 different haplotypes were detected (Table 1). Sequences were deposited to GenBank under accession numbers OL546359–OL546371.

A median-joining haplotype network was calculated from an alignment (717 bp) comprising 88 of our *C. daubneyi* mtDNA sequences and 22 *C. daubneyi* sequences downloaded from GenBank with 33 segregating sites, 16 parsimony-informative sites and nucleotide diversity ( $p = 0.0101$ ). The haplotype network did not show any obvious clusters of certain haplotypes. Interestingly, almost all *C. daubneyi* haplotypes ( $n = 11$ ) detected in the Czech beef cattle were previously reported in Ireland and one in Turkey (Fig. 4A). Only haplotypes CD6 and CD10 were recorded for the first time. The network comprised of six more unique haplotypes (CD14–CD19) and all originated in Ireland.

A maximum-likelihood phylogenetic tree was calculated by using the model TN + F + G4 based on an alignment (731 bp) consisting of 13 of our *C. daubneyi* sequences, representing individual haplotypes CD1–CD13, 23 *C. daubneyi* sequences downloaded from GenBank and a *Calicophoron microbothrioides* (GenBank accession number NC\_027271.1) sequence used as

**Table 1.** Overview of farms from which fecal samples and adult paramphistomid flukes were used for DNA barcoding with mtDNA haplotypes detected in adult rumen flukes

Region	Number of farms (feces)	Fecal samples sequenced	Number of farms (adults)	Adults sequenced	Number of mtDNA haplotypes	mtDNA haplotypes detected
B	1	1	–	–	–	–
C	12	34	31	35	11	CD1, CD2, CD3, CD4, CD5, CD6, CD7, CD8, CD10, CD12, CD13
E	1	3	–	–	–	–
H	3	4	2	2	2	CD2, CD8
J	1	2	12	16	8	CD3, CD4, CD5, CD7, CD8, CD9, CD11, CD12
K	4	17	3	4	4	CD5, CD7, CD8, CD11
L	6	17	7	7	5	CD1, CD4, CD6, CD7, CD9
M	1	3	4	7	4	CD3, CD4, CD5, CD6
P	7	11	10	13	7	CD2, CD3, CD4, CD5, CD7, CD8, CD12
S	–	–	2	2	2	CD6, CD9
T	8	20	2	2	2	CD2, CD12
U	2	7	2	2	2	CD1, CD9
Z	3	6	1	1	1	CD12

Farms where the fecal samples were sourced differed from farms where adult flukes originated from, only in South Bohemian Region (C) and Liberec Region (L), there was one farm where both fecal samples and adults originated from.

an outgroup. In the phylogenetic tree, a certain internal variability of analysed mtDNA was observed. A clade comprising Czech haplotypes CD1–CD4 and sequences corresponding to haplotypes CD16–CD19 distinguished in the haplotype network (Fig. 4) was formed and strongly supported by all three topology tests. However, the difference from other sequences varied from 0.2 to 2.2%.

### Calicophoron daubneyi DNA detected in all examined fecal samples

The ITS2 region (279–339 bp) was amplified in 125 fecal samples originating from 49 farms in 12 regions (Fig. 3). Almost all sequences were identical, only two differed by one and two nucleotides, respectively. In all three polymorphic sites, a double peak A/C was observed at alignment position 156 in one sample and at positions 115 and 122 in the other sample. The ITS2 sequence obtained from the majority of the fecal samples matched the ITS2 sequence from adult rumen flukes and confirmed that all sequenced samples contained *C. daubneyi* DNA. All examined chromatograms were clear and there was no suspicion of mixed infection. Three sequences representing each detected variant were deposited to GenBank, with accession numbers OL461704, OL461706 and OL461707.

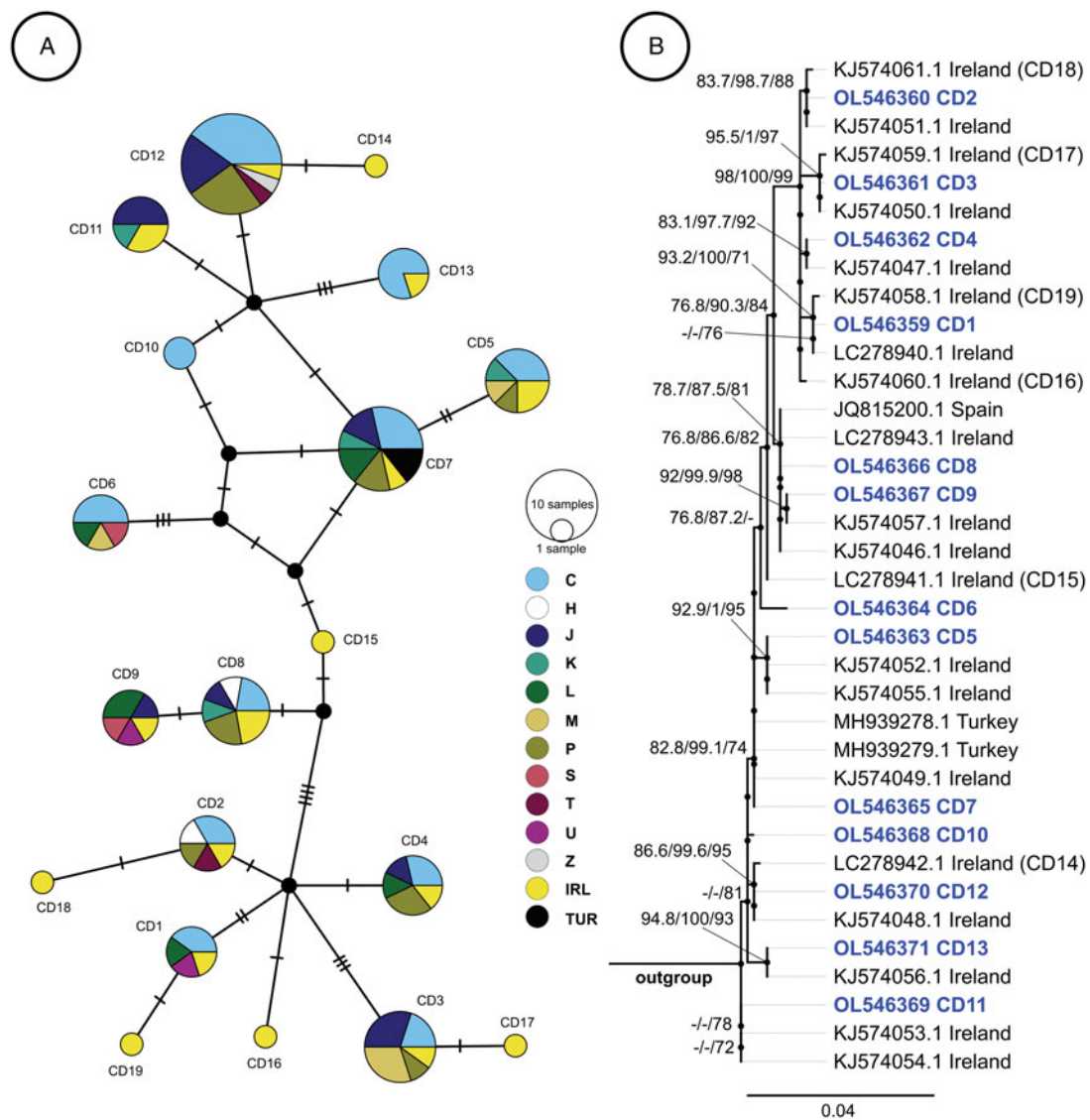
The final alignment (448 bp) of ITS2 region for a maximum-likelihood phylogenetic tree comprised of four sequences generated in this study representing adults of *C. daubneyi* and three sequences from fecal samples representing the individual variants, 172 sequences of paramphistomid trematodes downloaded from GenBank and two sequences of *Ogmocotyle* spp. as an outgroup. In the phylogenetic tree calculated by using the K2P + R2 model, all sequences of *C. daubneyi* formed one well-supported clade which was divided into two subclades. Our sequences clustered closely with sequences originating from Turkey, Algeria, South Africa, Italy and Ireland (Fig. 5). Most of the other clades in the tree corresponded to species, however, genera were mostly polyphyletic. Several clades (clades 1–7) comprised of sequences

labelled as a few different taxa. For example, sequences labelled *Cotylophoron cotylophorum* and *Calicophoron philerouxi* appeared in each of two quite distant clades. Sequences labelled *Calicophoron microbothrium* clustered in four distinct clades. Clade 7 comprised of sequences labelled as five different taxa. The pairwise sequence distances were rather low across the whole tree, with 14.5% being the largest detected difference, but most of the sequences differed by <10%.

### Discussion

In this study, over 5500 fecal samples from 115 farms were collected and examined across the whole Czech Republic, representing possibly the most extensive study focusing on cattle parasites in the country so far. Paramphistomid flukes were detected in almost 30% of the samples, but at more than 64% farms which is in stark contrast to earlier studies of the livestock parasites in Czech Republic (Kváč, 2003; Chroust, 2006), but corresponds well with the trend observed across Western Europe (Szmídt-Adjidé et al., 2000; Díaz et al., 2007; Zintl et al., 2014; Malrait et al., 2015; Toolan et al., 2015).

The identity of the detected paramphistomids was determined using 90 adult flukes and 125 fecal samples originating from a total of 125 different farms across the whole Czech Republic and the only detected species was *C. daubneyi*. It is not possible to predict that *C. daubneyi* is currently the only paramphistomid fluke infecting beef cattle in Czech Republic, but we can conclude that it is by far the dominant species. Kotrlá and Kotrlý (1982) examined over 400 rumen flukes collected from more than 3000 ruminants of nine domestic and free-ranging ruminants and while the vast majority of the trematodes were identified as *Paramphistomum* spp., two moufflons hosted *C. daubneyi* representing the first record of the parasite in the country. It is possible that this parasite could spread from game animals to cattle over time. On the contrary, cattle have been a subject of an extensive international trade and thousands of animals have been annually imported to Czech Republic in the past few decades (Ministry of

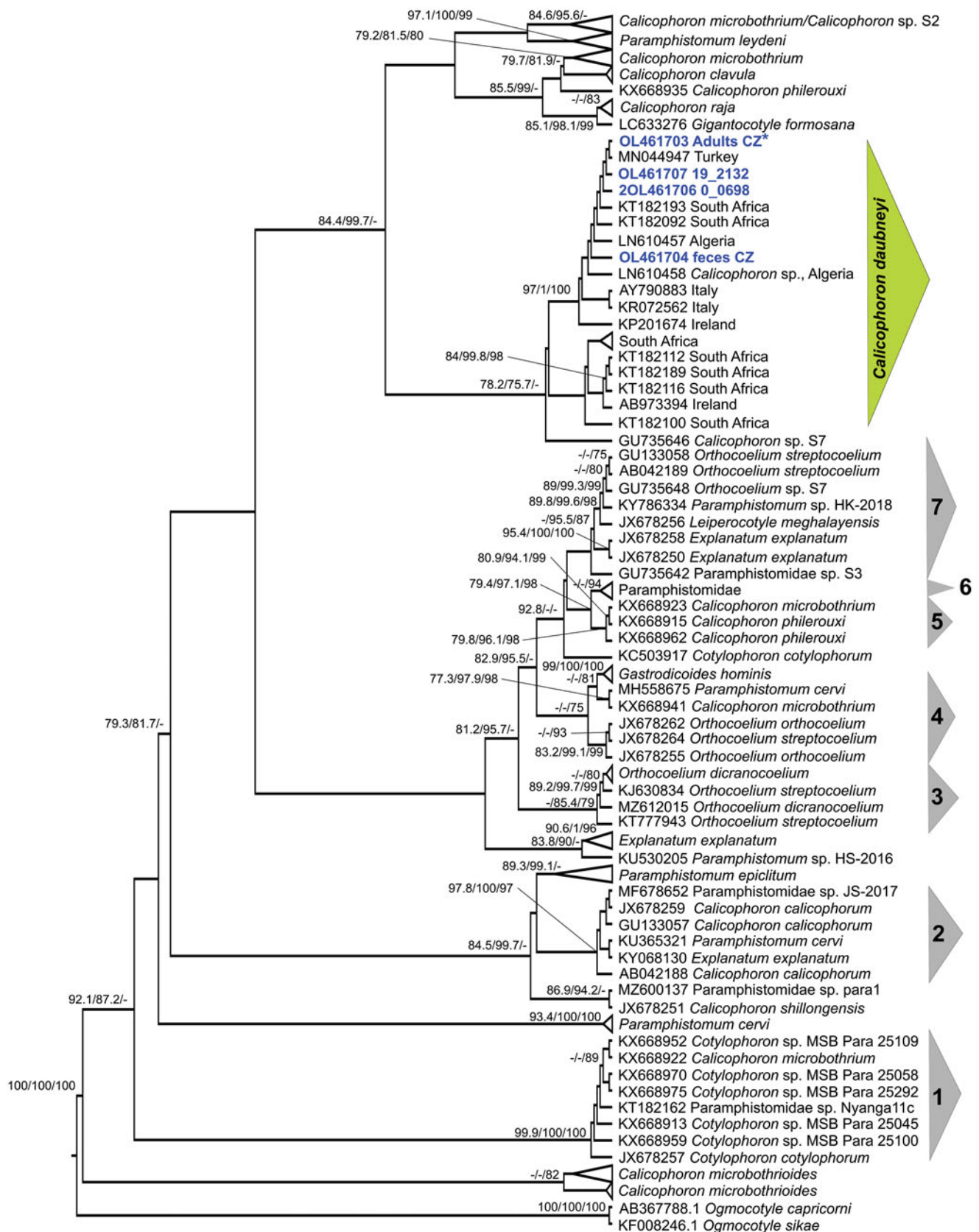


**Fig. 4.** (A) Median-joining haplotype network derived from 717 bp of *C. daubneyi* mtDNA. Haplotypes are indicated by code CD1–CD19. Origin of the sequence is indicated by the colour. Regions of Czech Republic are labelled by official abbreviations: C – South Bohemian, H – Hradec Králové, J – Vysočina, K – Karlovy Vary, L – Liberec, M – Olomouc, P – Plzeň, S – Central Bohemian, T – Moravian-Silesian, U – Ústí nad Labem, Z – Zlín, IRL – Ireland, TUR – Turkey. (B) Maximum-likelihood phylogenetic tree calculated by using the model TN + F + G4 from 731 bp of *C. daubneyi* mtDNA. Sequence of *Calicophoron microbothrioides* (GenBank accession number NC\_027271.1) was used as an outgroup (not shown). Numbers at nodes are ultrafast bootstrap support/approximate Bayes test posterior probability/SH-like approximate likelihood ratio test, all in %. Only values above 75% are shown. Sequences derived in this study are indicated in bold blue and labelled by the haplotype code used in the haplotype network. Sequences downloaded from GenBank are labelled by the accession number. Haplotype code used in the network is indicated where appropriate.

Agriculture of the Czech Republic, 2005, 2020). In 1995, Pavlásek (1995) detected the number of parasite taxa, including *Paramphistomum* eggs in heifers imported to Czech Republic from Western Europe. Considering the broad distribution of *C. daubneyi* in Western Europe (Huson *et al.*, 2017), it is more probable that the parasite has been recently and probably repeatedly imported to Czech herds and consequently spread across the whole territory of Czech Republic.

The obvious lack of variability in the ITS2 is comparable to the situation observed for example in UK, Ireland, Netherlands, Germany, Austria and Italy (Rinaldi *et al.*, 2005; Gordon *et al.*, 2013; Zintl *et al.*, 2014; Ploeger *et al.*, 2017; May *et al.*, 2019; Wiedermann *et al.*, 2021). On the contrary, 13 different haplotypes of mtDNA were detected across Czech Republic. In Ireland, Zintl *et al.* (2014) and O'Shaughnessy *et al.* (2018) found 16 and 20 different haplotypes, respectively. As *C. daubneyi* is currently regarded as an emerging pathogen, determination of the parasite origin could help predict its further spread. Only two

of our 13 haplotypes were detected for the first time, suggesting common evolutionary history with the Irish *C. daubneyi* population and only a recent separation. The ITS2 has proven to be a good marker for screening and determination of paramphistomid trematodes as suggested also by Mitchell *et al.* (2021). However, the ITS2 analysis revealed several discrepancies between the sequence annotation and its genetic identity (Fig. 5). Phylogenetic analyses of Paramphistomidae *cox1* carried out in the study of Laidemitt *et al.* (2017) and newly published study of Wiedermann *et al.* (2021) showed a slightly better resolution of the species-corresponding clades; however, some polytomies and clades with very low support were present. Additionally, few sequences, e.g. KX670107 *Calicophoron phillerouxii* clustered in a clade different from the sequence annotation, which was *C. microbothrium* in this case (Wiedermann *et al.*, 2021). Laidemitt *et al.* (2017) observed discrepancy between nuclear (ITS2) and mitochondrial (*cox1*) identity in several paramphistomid specimens and suggested a possible hybrid origin of these



**Fig. 5.** Maximum-likelihood phylogenetic tree of the available paramphistomid trematodes' ITS2 region (448 bp) calculated by using the K2P + R2 model. Sequences derived in this study are indicated in bold blue, sequences downloaded from GenBank are labelled by the accession number and label provided in GenBank. For sequences of *C. daubneyi*, country of origin is indicated. Numbers at nodes are ultrafast bootstrap support value/approximate Bayes test posterior probability/SH-like approximate likelihood ratio test support value, all in %. Only values above 75 are shown. The branches were transformed to a proportional cladogram to illustrate the phylogenetic relationships better. The original tree without collapsed clades and true branch length pictured is provided as a Supplementary file S1. \*ITS2 sequences from newly published study (Wiedermann et al., 2021) from Germany and Austria are identical with our consensus sequences but are not represented in the tree as the article was published after the analyses were completed.

individuals. However, observing a discrepancy between the sequence annotation and its genetic identity, misidentification of the specimens used for DNA extraction may be the reason. As some studies use stages from mollusc intermediate hosts and/or eggs, the morphological determination is limited (Laidemitt *et al.*, 2017). Morphology of adult paramphistomid flukes is also quite intricate (Eduardo, 1982, 1983); however, performing the accurate morphological identification of reference specimens before the DNA sequencing is crucial to enable easy DNA barcoding in the future studies.

The prevalence varied among the farms and in about a third of them, more than 65% of the examined fecal samples contained paramphistomid eggs. A shift in the spectrum of paramphistomids of cattle also has a range of ecological connotations. European species of the *Paramphistomum* genus typically exploit planorbic aquatic snails as their intermediate hosts. In contrast, the dominant intermediate host of *C. daubneyi* is *G. truncatula* (and a few other lymnaeid snails) (Huson *et al.*, 2017; Atcheson *et al.*, 2020). Beef cattle production in Czech Republic has moved to areas with higher altitude with conditions perfect for *G. truncatula*, but not for most of the planorbids. Importantly, the same spectrum of molluscs is involved in the life cycle of the liver fluke *F. hepatica* (Abrous *et al.*, 2000; Deplazes *et al.*, 2016; Beesley *et al.*, 2018). Compared to *C. daubneyi*, *F. hepatica* is less prevalent in Czech Republic (Zmuda and Chroust, 2001) and also in the present study, the liver fluke was detected in fewer than 30 samples at 12 farms in five regions (data not shown). Fasciolosis had been causing significant economic loss in the past; however, the extensive use of anthelmintic treatment and pasture management have apparently reduced the liver fluke population in the last few decades of the 20th century. The herein reported common occurrence of *C. daubneyi* in the Czech farms indicates environmental conditions suitable also for *F. hepatica* and risk of its (re)emergence.

**Supplementary material.** The supplementary material for this article can be found at <https://doi.org/10.1017/S0031182021002158>.

**Data.** All DNA sequences generated in this study were deposited to GenBank under accession numbers OL461703–OL461704, OL461706–OL461707 and OL546359–OL546371. Fecal samples and all DNA aliquots are deposited at the CEITEC VETUNI BioBank, University of Veterinary Sciences Brno, Brno, Czech Republic.

**Acknowledgements.** The authors thank all farmers involved in the study. They also thank the abattoirs for facilitating the collection of adult rumen flukes and are indebted to K. Špůrková and L. Hanáková for technical assistance in the lab. The authors are also indebted to Vincenzo Veneziano and Domenico Otranto as well as other colleagues from the parasitology teams of Università degli Studi di Napoli Federico II and Università degli Studi di Bari Aldo Moro for invaluable assistance and hints in sample processing. The authors thank the reviewers for their valuable comments that helped improving the manuscript.

**Author contributions.** B. Č., L. A., E. N., I. P., B. P., K. J., J. J. and P. P. participated in sample collection and coproscopic examinations. P. P. collected the adult rumen flukes and collected data on the infections. B. Č., L. A., E. N., K. J., J. J. and P. P. extracted the DNA. B. Č., L. A., E. N. and K. J. carried out DNA amplifications and processed samples for sequencing. L. A., E. N., K. J. and B. Č. processed the sequences. B. Č. and B. P. analysed the data from coproscopy. B. Č. analysed the sequences, carried out phylogenetic analyses, visualized the results and wrote the first version of the manuscript. D. M. and B. P. edited the manuscript. D. M., P. V. and K. M. secured the funding, coordinated and supervised the project. All authors read and agree with the manuscript.

**Financial support.** This study was supported by the Ministry of Agriculture of the Czech Republic (grant number QK1910204).

**Conflict of interest.** The authors declare none.

**Ethical standards.** All samples used in the study were collected in compliance with national ethical standards on animal handling and veterinary care.

## References

- Abrous M, Rondelaud D and Dreyfuss G (1996) *Paramphistomum daubneyi* and *Fasciola hepatica*: the effect of dual infection on prevalence and cercarial shedding in preadult *Lymnaea glabra*. *The Journal of Parasitology* **82**, 1026–1029.
- Abrous M, Rondelaud D and Dreyfuss G (2000) A field study of natural infections in three freshwater snails with *Fasciola hepatica* and/or *Paramphistomum daubneyi* in central France. *Journal of Helminthology* **74**, 189–194.
- Altschul SF, Gish W, Miller W, Myers EW and Lipman DJ (1990) Basic local alignment search tool. *Journal of Molecular Biology* **215**, 403–410.
- Anderson GR and Barker SC (1998) Inference of phylogeny and taxonomy within the Didymozoidae (Digenea) from the second internal transcribed spacer (ITS2) of ribosomal DNA. *Systematic Parasitology* **41**, 87–94.
- Anisimova M, Gil M, Dufayard JF, Dessimoz C and Gascuel O (2011) Survey of branch support methods demonstrates accuracy, power, and robustness of fast likelihood-based approximation schemes. *Systematic Biology* **60**, 685–699.
- Arias M, Lomba C, Dacal V, Vázquez L, Pedreira J, Francisco I, Piñeiro P, Cazapal-Monteiro C, Suárez JL, Díez-Baños P, Morrondo P, Sánchez-Andrade R and Paz-Silva A (2011) Prevalence of mixed trematode infections in an abattoir receiving cattle from northern Portugal and north-west Spain. *Veterinary Record* **168**, 408.
- Atcheson E, Skuce PJ, Oliver NAM, McNeilly TN and Robinson MW (2020) *Calicophoron daubneyi* – the path toward understanding its pathogenicity and host interactions. *Frontiers in Veterinary Science* **7**, 606.
- Ates C and Umur S (2021) Paramphistome species in water buffaloes and intermediate hosts in the Kızılırmak Delta in Samsun Province, Turkey. *Acta Parasitologica* **66**, 213–221.
- Bandelt H, Forster P and Röhl A (1999) Median-joining networks for inferring intraspecific phylogenies. *Molecular Biology and Evolution* **16**, 37–48.
- Beesley NJ, Caminade C, Charlier J, Flynn RJ, Hodgkinson JE, Martínez-Moreno A, Martínez-Valladares M, Perez J, Rinaldi L and Williams DJL (2018) *Fasciola* and fasciolosis in ruminants in Europe: identifying research needs. *Transboundary and Emerging Diseases* **65**, 199–216.
- Bosco A, Nocerino M, Santaniello M, Maurelli MP, Cringoli G and Rinaldi L (2021) Mapping the spatial distribution of the rumen fluke *Calicophoron daubneyi* in a Mediterranean area. *Pathogens (Basel, Switzerland)* **10**, 1122.
- Chroust K (1964) Paramphistomatóza mladého skotu [Paramphistomatosis of young cattle]. *Veterinářství* **14**, 104–107.
- Chroust K (2000) Problematika parazitóz u masných plemen skotu. [Problems of parasitosis in beef breeds of cattle]. In Teslík V (ed.), *Masný Skot*. [Beef Cattle]. Praha, Czech Republic: Agrospoj, pp. 164–173.
- Chroust K (2006) Parazitózy u masných plemen skotu v marginálních oblastech a jejich tlumení. [Parasitosis in beef breeds of cattle in marginal areas and their control]. *Veterinářství* **56**, 430–437.
- Deiana S and Arru E (1963) Further inquiries on paramphistomosis (*Paramphistomum cervi*) in Sardinia. *La Ricerca Scientifica. 2. ser., pt. 2: Rendiconti. Sezione B: Biologica* **3**, 449–458.
- Deplazes P, Eckert J, Mathis A, von Samson-Himmelstjerna G and Zahner H (2016) *Parasitology in Veterinary Medicine*. Wageningen, Netherlands: Wageningen Academic Publishers.
- Díaz P, Paz-Silva A, Sánchez-Andrade R, Suárez JL, Pedreira J, Arias M, Díez-Baños P and Morrondo P (2007) Assessment of climatic and orographic conditions on the infection by *Calicophoron daubneyi* and *Dicrocoelium dendriticum* in grazing beef cattle (NW Spain). *Veterinary Parasitology* **149**, 285–289.
- Dinnik JA (1962) *Paramphistomum daubneyi* sp. nov. from cattle and its snail host in the Kenya highlands. *Parasitology* **52**, 143–151.
- Eduardo SL (1982) The taxonomy of the family Paramphistomidae Fiscoeder, 1901 with special reference to the morphology of species occurring in ruminants. II. Revision of the genus *Paramphistomum* Fiscoeder, 1901. *Systematic Parasitology* **4**, 189–238.
- Eduardo SL (1983) The taxonomy of the family Paramphistomidae Fiscoeder, 1901 with special reference to the morphology of species occurring in ruminants. III. Revision of the genus *Calicophoron* Näsmark, 1937. *Systematic Parasitology* **5**, 25.



- Erhardová B and Kotrlý A (1955) Cizopasní červi zažívacího ústrojí našich volně žijících přežvýkavců. [Parasitic helminths in the gastrointestinal tract of our free-ranging ruminants]. *Československá Parasitologie* 2, 41–68.
- Fenimore C, Floyd T and Mitchell S (2021) Rumen fluke in Great Britain. *Journal of Comparative Pathology* 184, 31–36.
- Ferreras MC, Gonzalez-Lanza C, Perez V, Fuertes M, Benavides J, Mezo M, González-Warleta M, Giráldez J, Martínez-Ibeas AM, Delgado L, Fernández M and Manga-González MY (2014) *Calicophoron daubneyi* (Paramphistomidae) in slaughtered cattle in Castilla y Leon (Spain). *Veterinary Parasitology* 199, 268–271.
- Foreyt WJ (2002) *Veterinary Parasitology Reference Manual*, 5th Edn. Hoboken, USA: Wiley-Blackwell.
- González-Warleta M, Lladosa S, Castro-Hermida JA, Martínez-Ibeas AM, Conesa D, Muñoz F, López-Quílez A, Manga-González Y and Mezo M (2013) Bovine paramphistomosis in Galicia (Spain): prevalence, intensity, aetiology and geospatial distribution of the infection. *Veterinary Parasitology* 191, 252–263.
- Gordon DK, Roberts LCP, Lean N, Zadoks RN, Sargison ND and Skuce PJ (2013) Identification of the rumen fluke, *Calicophoron daubneyi*, in GB livestock: possible implications for liver fluke diagnosis. *Veterinary Parasitology* 195, 65–71.
- Grabner M, Delavenay R and Tesfamariam G (1978) Inventaire parasitologique de l'Éthiopie: Helminthes des zébus adultes de la région de Kofélé (Arussi). *Revue d'Élevage et de Médecine Vétérinaire des Pays Tropicaux* 31, 341–352.
- Grabner M, Chauve MC and Fonteneau M (1980) Existence en France de *Paramphistomum daubneyi* Dinnik, 1962. *Bulletin de l'Académie Vétérinaire de France* 53, 265–271.
- Guilhon J and Priouzeau T (1945) La paramphistomose bovine en France. *Recueil de Médecine Vétérinaire* 121, 225–237.
- Horák I, Marchiondo A and Colwell D (2019) Platyhelminthes. In Marchiondo A, Cruthers L and Fourie J (eds), *Parasiticide Screening*, Vol. 2. Cambridge, USA: Academic Press, pp. 1–133.
- Hovorka J (1954) *Helminthologická diagnostika, I Laboratorná diagnostika helmintóz. [Helminthological diagnostics, I Laboratory diagnostics of helminthoses]*. Bratislava, Slovakia: Vydavateľstvo Slovenskej Akadémie Vied.
- Huson KM, Oliver NAM and Robinson MW (2017) Paramphistomosis of ruminants: an emerging parasitic disease in Europe. *Trends in Parasitology* 33, 836–844.
- Jones RA, Williams HW, Dalesman S and Brophy PM (2015) Confirmation of *Galba truncatula* as an intermediate host snail for *Calicophoron daubneyi* in Great Britain, with evidence of alternative snail species hosting *Fasciola hepatica*. *Parasites & Vectors* 8, 656.
- Jones RA, Brophy PM, Mitchell ES and Williams HW (2017) Rumen fluke (*Calicophoron daubneyi*) on Welsh farms: prevalence, risk factors and observations on co-infection with *Fasciola hepatica*. *Parasitology* 144, 237–247.
- Kalyanamoorthy S, Minh BQ, Wong TKF, von Haeseler A and Jermini LS (2017) ModelFinder: fast model selection for accurate phylogenetic estimates. *Nature Methods* 14, 587–589.
- Kotlán A (1958) Zur Kenntnis der Paramphistomiden ungarns. *Acta Veterinaria Hungarica* 8, 93–104.
- Kotrlá B and Chroust K (1978) *Paramphistomum ichikawai* in cattle in Southern Moravia. *Acta Veterinaria Brno* 47, 97–101.
- Kotrlá B and Kotrlý A (1982) Výskyt motolice rodu *Paramphistomum* v ČSSR [The incidence of flukes of the genus *Paramphistomum* in Czechoslovakia]. *Veterinární Medicína* 27, 483–490.
- Kváč M (2003) *Occurrence of Endoparasites in Young Beef Cattle [Výskyt Endoparazitů u Mladého Skotu Masných Plemen]* (PhD thesis). University of South Bohemia, České Budějovice, Czech Republic.
- Laidemitt MR, Zawadzki ET, Brant SV, Mutuku MW, Mkoji GM and Loker ES (2017) Loads of trematodes: discovering hidden diversity of paramphistomoids in Kenyan ruminants. *Parasitology* 144, 131–147.
- Leigh JW and Bryant D (2015) PopART: full-feature software for haplotype network construction. *Methods in Ecology and Evolution* 6, 1110–1116.
- Lotfy WM, Brant SV, Ashmawy KI, Devkota R, Mkoji GM and Loker ES (2010) A molecular approach for identification of paramphistomes from Africa and Asia. *Veterinary Parasitology* 174, 234–240.
- Luton K, Walker D and Blair D (1992) Comparisons of ribosomal internal transcribed spacers from two congeneric species of flukes (Platyhelminths: Trematoda: Digenea). *Molecular and Biochemical Parasitology* 56, 323–328.
- Malrait K, Verschave S, Skuce P, Van Loo H, Vercruyse J and Charlier J (2015) Novel insights into the pathogenic importance, diagnosis and treatment of the rumen fluke (*Calicophoron daubneyi*) in cattle. *Veterinary Parasitology* 207, 134–139.
- Martínez-Ibeas AM, González-Warleta M, Martínez-Valladares M, Castro-Hermida JA, González-Lanza C, Miñambres B, Ferreras C, Mezo M and Manga-González MY (2013) Development and validation of a mtDNA multiplex PCR for identification and discrimination of *Calicophoron daubneyi* and *Fasciola hepatica* in the *Galba truncatula* snail. *Veterinary Parasitology* 195, 57–64.
- Mason C, Stevenson H, Cox A, Dick I and Rodger C (2012) Disease associated with immature paramphistome infection in sheep. *Veterinary Record* 170, 343–344.
- May K, Brüggemann K, König S and Strube C (2019) Patent infections with *Fasciola hepatica* and paramphistomes (*Calicophoron daubneyi*) in dairy cows and association of fasciolosis with individual milk production and fertility parameters. *Veterinary Parasitology* 267, 32–41.
- Millar M, Colloff A and Scholes S (2012) Bovine health: disease associated with immature paramphistome infection. *Veterinary Record* 171, 509–511.
- Minh BQ, Nguyen MAT and von Haeseler A (2013) Ultrafast approximation for phylogenetic bootstrap. *Molecular Biology and Evolution* 30, 1188–1195.
- Ministry of Agriculture of the Czech Republic (2005) Situační a výhledová zpráva Skot – hovězí maso, prosinec 2005. [Situation and prospective report cattle – beef, December 2005]. Available at [https://eagri.cz/public/web/file/2945/SKOT\\_12\\_2005.pdf](https://eagri.cz/public/web/file/2945/SKOT_12_2005.pdf).
- Ministry of Agriculture of the Czech Republic (2020) Situační a výhledová zpráva Skot – hovězí maso, 2020. [Situation and prospective report cattle – beef, 2020]. Available at [https://eagri.cz/public/web/file/668434/Skot\\_2020\\_web.pdf](https://eagri.cz/public/web/file/668434/Skot_2020_web.pdf).
- Mitchell G, Zadoks RN and Skuce PJ (2021) A universal approach to molecular identification of rumen fluke species across hosts, continents, and sample types. *Frontiers in Veterinary Science* 7, 605259.
- O'Shaughnessy J, Garcia-Campos A, McAlloon CG, Fagan S, de Waal T, McElroy M, Casey M, Good B, Mulcahy G, Fagan J, Murphy D and Zintl A (2018) Epidemiological investigation of a severe rumen fluke outbreak on an Irish dairy farm. *Parasitology* 145, 948–952.
- Padak Y and Karakus A (2021) Molecular identification of Paramphistomidae obtained from ruminants in Van province. *Ankara Üniversitesi Veteriner Fakültesi Dergisi* 68, 223–228.
- Páv J, Zajíček D and Zima L (1962) K výskytu *Paramphistomum cervi* (Schränk 1790) u naší spárkaté zvěře. [On the occurrence of *Paramphistomum cervi* (Schränk 1790) in our game ungulates]. *Veterinární Medicína* 7, 161–166.
- Pavlašek I (1995) Nálezy kryptosporidií a dalších endoparazitů u jalovic dovážených do České republiky [Cryptosporidia and other endoparasites in heifers imported into the Czech Republic]. *Veterinární Medicína* 40, 333–336.
- Pfukenyi DM and Mukaratirwa S (2018) Amphistome infections in domestic and wild ruminants in East and Southern Africa: a review. *The Onderstepoort Journal of Veterinary Research* 85, e1–e13.
- Ploeger HW, Ankum L, Moll L, van Doorn DCK, Mitchell G, Skuce PJ, Zadoks RN and Holzhauer M (2017) Presence and species identity of rumen flukes in cattle and sheep in the Netherlands. *Veterinary Parasitology* 243, 42–46.
- Rinaldi L, Perugini AG, Capuano F, Fenizia D, Musella V, Veneziano V and Cringoli G (2005) Characterization of the second internal transcribed spacer of ribosomal DNA of *Calicophoron daubneyi* from various hosts and locations in southern Italy. *Veterinary Parasitology* 131, 247–253.
- Rondelaud D, Vignoles P, Vareille-Morel C, Abrous M, Mage C, Mouzet R and Dreyfuss G (2004) *Fasciola hepatica* and *Paramphistomum daubneyi*: field observations on the transport and outcome of floating metacercariae in running water. *Journal of Helminthology* 78, 173–177.
- Sanna G, Varcasia A, Serra S, Salis F, Sanabria R, Pipia AP and Scala A (2016) *Calicophoron daubneyi* in sheep and cattle of Sardinia, Italy. *Helminthologia* 53, 87–93.
- Seck MT, Bâ CT and Marchand B (2008) Présence de *Paramphistomum daubneyi* Dinnik, 1962 (Digenea, Paramphistomidae, trématode) au Sénégal. *Revue d'Élevage et de Médecine Vétérinaire des Pays Tropicaux* 61, 181–184.
- Sey O (1974) On the species of *Paramphistomum* of cattle and sheep in Hungary. *Acta Veterinaria Academiae Scientiarum Hungaricae* 24, 19–37.
- Sey O (1978) Examination of rumen flukes (Trematoda: Paramphistomata) of cattle in Rumania. *Parasitologia Hungarica* 11, 23–25.
- Sey O (1979) Life-cycle and geographical distribution of *Paramphistomum daubneyi* Dinnik, 1962 (Trematoda: Paramphistomata). *Acta Veterinaria Academiae Scientiarum Hungaricae* 27, 115–130.

- Sey O and Arru E** (1977) Review of species of *Paramphistomum* Fiscoeder, 1901 occurring in Sardinian domestic ruminants. *Rivista di Parassitologia* **38**, 295–301.
- Sey O and Vishnyakov Y** (1976) Examination of Paramphistomid species of Bulgarian domestic ruminants. *Parasitologia Hungarica* **9**, 25–29.
- Sheather AL** (1923) The detection of intestinal protozoa and mange parasites by a floatation technique. *Journal of Comparative Pathology and Therapeutics* **36**, 266–275.
- Szmidt-Adjidé V, Abrous M, Adjidé CC, Dreyfuss G, Lecompte A, Cabaret J and Rondelaud D** (2000) Prevalence of *Paramphistomum daubneyi* infection in cattle in central France. *Veterinary Parasitology* **87**, 133–138.
- Taylor MA, Coop RL and Wall RL** (2007) Parasites of cattle. In Taylor MA, Coop RL and Wall RL (eds), *Veterinary Parasitology*, 3rd Edn. Oxford; Ames, IA, USA: Blackwell Publishing, pp. 52–53.
- Tilling O** (2013) Rumen fluke in cattle in the UK: a review. *Livestock* **18**, 223–227.
- Titi A, Mekroud A, Sedraoui S, Vignoles P and Rondelaud D** (2010) Prevalence and intensity of *Paramphistomum daubneyi* infections in cattle from north-eastern Algeria. *Journal of Helminthology* **84**, 177–181.
- Toolan DP, Mitchell G, Searle K, Sheehan M, Skuce PJ and Zadoks RN** (2015) Bovine and ovine rumen fluke in Ireland – prevalence, risk factors and species identity based on passive veterinary surveillance and abattoir findings. *Veterinary Parasitology* **212**, 168–174.
- Trifinopoulos J, Nguyen LT, von Haeseler A and Minh BQ** (2016) W-IQ-TREE: a fast online phylogenetic tool for maximum likelihood analysis. *Nucleic Acids Research* **44**, W232–W235.
- Wenzel C, Kuchler A, Strube C and Knubben-Schweizer G** (2019) Paramphistomidose – eine Übersicht zu Epidemiologie und klinischer Symptomatik [Paramphistomidosis – an overview on epidemiology and clinical signs]. *Tierärztliche Praxis Ausgabe G: Grosstiere/Nutztiere* **47**, 184–191.
- Wiedermann S, Harl J, Fuehrer HP, Mayr S, Schmid J, Hinney B and Rehbein S** (2021) DNA barcoding of rumen flukes (Paramphistomidae) from bovines in Germany and Austria. *Parasitology Research* **120**, 4061–4066.
- Willmott S** (1950) On the species of *Paramphistomum* Fiscoeder, 1901 occurring in Britain and Ireland with notes on some material from the Netherlands and France. *Journal of Helminthology* **24**, 155–170.
- Zintl A, Garcia-Campos A, Trudgett A, Chryssafidis AL, Talavera-Arce S, Fu Y, Egan S, Lawlor A, Negro C, Brennan G, Hanna RE, De Waal T and Mulcahy G** (2014) Bovine paramphistomes in Ireland. *Veterinary Parasitology* **204**, 199–208.
- Zmuda K and Chroust K** (2001) Motolíčnatost skotu v okrese Frýdek-Místek [Cattle fluke infections in the Frýdek-Místek district]. *Veterinářství* **51**, 181–183.