



Research Paper

Cite this article: De Simone W et al. (2023) Applying geostatistical hotspot analyses to a 'double-invaded' plant–pest co-occurrence scenario. *Environmental Conservation* 50: 241–250. doi: [10.1017/S037689292300022X](https://doi.org/10.1017/S037689292300022X)

Received: 20 April 2023
Revised: 21 August 2023
Accepted: 22 August 2023
First published online: 22 September 2023

Keywords:

Ambrosia artemisiifolia; co-occurrence; ecological niche modelling; hotspot analysis; invasive alien species; *Ophraella communa*

Corresponding author:

Mattia Iannella;
Email: mattia.iannella@univaq.it

© The Author(s), 2023. Published by Cambridge University Press on behalf of Foundation for Environmental Conservation. This is an Open Access article, distributed under the terms of the Creative Commons Attribution licence (<http://creativecommons.org/licenses/by/4.0/>), which permits unrestricted re-use, distribution and reproduction, provided the original article is properly cited.

Applying geostatistical hotspot analyses to a 'double-invaded' plant–pest co-occurrence scenario

Walter De Simone , Mattia Iannella , Paola D'Alessandro and Maurizio Biondi

Department of Life, Health & Environmental Sciences, University of L'Aquila, L'Aquila, Italy

Summary

Invasive alien species represent a multifaceted management problem in terms of threats to biodiversity and ecosystems and their impacts on agriculture and human well-being. *Ambrosia artemisiifolia* is an invasive alien plant in Europe that affects the human population as its already highly allergenic pollen can interact with air pollutants, resulting in detrimental effects on health. In this context, the invasive beetle *Ophraella communa* was proposed as a biocontrol agent of *A. artemisiifolia*, as it feeds on its leaves, leading to a decrease in pollen production. This paper takes advantage of the different co-occurrence classes obtained by the ecological niche models inferred for both of these species based on current and future climatic conditions. We integrate them with spatial data regarding major air pollutants (nitrogen dioxide and fine particulate matter). We couple this information with European human population density data at a narrow territorial scale to infer current and future statistically significant hotspots of health risk. The Netherlands and the UK host the widest hotspots within their national territory for both current (7.09% and 3.54%, respectively) and future (15.04% and 6.70%, respectively) scenarios. Considering the alarming results obtained for some areas, the monitoring and biocontrol of *A. artemisiifolia* should be applied as a European strategy.

Introduction

Invasive alien species (IAS) can impact agricultural and livestock systems (Gil et al. 2017), whole ecosystems (Milanović et al. 2020) and human health (Mazza & Tricarico 2018). All of these issues may be caused by potentially just one IAS becoming established successfully in a specific area; the constraints reported by the biotic–abiotic–movement diagram (Soberon & Peterson 2005) well summarize this complexity. Abiotic factors such as temperature and precipitation heavily influence the distribution of many species (Lewis et al. 2017). The accessibility of areas is an important factor in the colonization of areas by an IAS (Arim et al. 2006); human-mediated transportation plays an essential role in this regard (Ascensão & Capinha 2017). In addition, the co-occurrence of species that may ecologically interact with an IAS becoming established in a certain area is a fundamental point to consider when attempting to manage an invasion (Buttenschøn et al. 2010, Lommen et al. 2017).

The study of plant invasions and their ecological implications has gained significant attention in recent years, as global environmental changes continue to reshape ecosystems worldwide. Plant invasions, which refer to the establishment and rapid spread of non-native plant species in ecosystems, pose a substantial threat to biodiversity, ecosystem functioning and ecosystem services (Pyšek et al. 2010, Vilà et al. 2011). Understanding how environmental changes influence the success and impacts of plant invasions is crucial for developing effective management strategies and mitigating the negative consequences of such invasions. Numerous studies have highlighted the role of environmental changes, including climate change, land-use modifications and alterations in disturbance regimes, as key drivers of plant invasions (Dukes & Mooney 1999, Simberloff et al. 2013, Seebens et al. 2017). These changes can create novel ecological conditions, providing favourable opportunities for non-native plants to establish and outcompete native species. However, the specific mechanisms by which environmental changes influence plant invasions are complex and multifaceted, requiring further investigation.

The establishment of IAS can be explained by the great influence exerted by propagule pressure (i.e., the quantity and frequency of introductions of individuals or reproductive units). Numerous studies have highlighted the crucial role of this phenomenon in determining the invasion success and ecological impacts of IAS (Colautti & MacIsaac 2004, Lockwood et al. 2005, Blackburn et al. 2011). The abundance and frequency of introductions can enhance genetic diversity, facilitate adaptation to new habitats and overcome stochastic events and ecological barriers, ultimately promoting the successful establishment of IAS (Lockwood et al. 2005,



Simberloff 2009). Therefore, understanding and managing propagule pressure are vital for effective prevention and control strategies aimed at mitigating the impacts of IAS on ecosystems and biodiversity conservation, especially in the context of other ecological pressures. Indeed, as a cross-cutting phenomenon, climate change affects both abiotic and biotic factors and may favour the establishment of IAS (De Simone et al. 2020, Iannella et al. 2021a). For example, amongst many others, the common ragweed *Ambrosia artemisiifolia* L., an IAS from North America, has been established in Europe since the nineteenth century (Hegi 1918, Chauvel et al. 2006), damaging agriculture (Barnes et al. 2018) and human health (Bonini et al. 2016) with its highly allergenic pollen (Plank et al. 2016, Cardarelli et al. 2018). Moreover, *A. artemisiifolia* is a pioneer plant that emerges from a durable, dense soil seed bank, especially if the ground is disturbed, such as in agricultural contexts (Simard et al. 2020); it is also observed to grow outside agricultural areas, colonizing cities and causing serious human health problems. Numerous studies have drawn attention to the accelerated invasion of this species, its increased pollen production (Ziska & Caulfield 2000, Wayne et al. 2002, Bullock et al. 2012, Chapman et al. 2016), as well as its late pollen production, dependent in turn on the habitats in which it occurs (Fumanal et al. 2007), with related negative effects on human well-being stemming from its earlier and longer pollen seasons (see Beggs & Bambrick 2005). In addition, evidence for the long-distance dispersal of *A. artemisiifolia* pollen suggests its remarkable capability for extensive transportation (and, thus, pollinosis outbreaks) and concurrent great seed dispersal, with subsequent establishment in new areas (Šikoparija et al. 2013, Grewling et al. 2019). Climate change is also worsening this issue (Hamaoui-Laguel et al. 2015).

Many efforts have been made to control (or even eradicate) this species (Vincent et al. 1992, SMARTER Project 2016). Some researchers proposed using the ragweed leaf beetle *Ophraella communa* LeSage (Chrysomelidae, Galerucinae), an IAS itself that feeds on *A. artemisiifolia*, to control the plant (Zhou et al. 2014, Sun et al. 2017). In fact, *O. communa* defoliates and leads to a decrease in common ragweed pollen production, concurrently causing a reduced level of damage to cultivated plants with which *A. artemisiifolia* usually co-occurs (e.g., sunflower crops; Dernovici et al. 2006). This last point has raised the interest of researchers over the past 30 years, especially after *O. communa*'s proposal as a biological control agent for ragweed in Australia was rejected (Palmer & Goeden 1991). Today, its potential use is being re-assessed (Müller-Schärer et al. 2023). Indeed, despite extensive tests having been conducted to ensure the host specificity of *O. communa* in various regions of its secondary range, there are still concerns regarding the actual risk of infestation that could affect sunflowers or other Asteraceae crops (Jin et al. 2023). These concerns also derive from the fact that *O. communa* feeds on other plants, such as cocklebur (e.g., *Xanthium strumarium* L.), giant ragweed (*Ambrosia trifida* L.), the IAS feverfew (*Parthenium hysterophorus* L.) and species of commercial interest, such as the Jerusalem artichoke (*Helianthus tuberosus* L.; Jin et al. 2023).

The ragweed leaf beetle *O. communa*, native to the south-eastern area of North America, was first found in two European countries in 2013 feeding on *A. artemisiifolia*, fortuitously demonstrating its potential for biological control (Müller-Schärer et al. 2014). In fact, this oligophagous species feeds on several Asteraceae, including *A. artemisiifolia*, on which it lays its eggs and its larvae develop. This species is also found in other

secondary ranges than Europe, such as some Asian countries (China, South Korea and Japan; Meng & Li 2005, Nishide et al. 2015, Kim 2018).

Europe represents the study area of the present research, where the two target species, *A. artemisiifolia* and *O. communa*, co-occur. Iannella et al. (2019a) investigated the simultaneous invasion dynamics of these two species in Europe. Recognizing the potential of *O. communa* as a biological control agent for the invasive *A. artemisiifolia*, the researchers employed a multifaceted approach, combining ecological niche modelling (ENM), remote sensing and geographic information system (GIS) techniques. The objective was to assess the effectiveness of this biocontrol strategy under three distinct future climatic scenarios. The research not only laid the groundwork for more in-depth studies, but also identified specific European regions where the co-occurrence of these two species would be probable in the future. Such insights are crucial for pinpointing areas where biocontrol interventions could yield the most significant benefits. However, a notable finding from their study was the prediction that, in some European countries, *A. artemisiifolia* is poised for a more extensive expansion than *O. communa* in future scenarios. This suggests potential challenges in solely relying on *O. communa* as an effective biological control agent, emphasizing the need for continuous monitoring and possibly the integration of other control measures. In this research, we go deeper in assessing the impacts of *A. artemisiifolia* allergenicity in both current and future scenarios, using ground and remotely sensed information regarding environmental factors acting as adjuvants of common ragweed's allergenicity. Some air pollutants may interact with airborne pollens, increasing the negative impacts on human health, with nitrogen dioxide (NO₂) and fine particulate matter (PM) recognized to be the main drivers of this (Reinmuth-Selzle et al. 2017, Oduber et al. 2019). NO₂ is a common by-product of combustion derived from human activities (e.g., vehicular traffic, industry and household activities) and increases the allergenicity of *A. artemisiifolia* pollens (Ghiani et al. 2012, Zhao et al. 2016, Reinmuth-Selzle et al. 2017). In addition, its non-homogeneous diffusion and clustering behaviour (Misra et al. 2021) and its influence on *A. artemisiifolia* pollen release per inflorescence (Cheng et al. 2023) make it a detrimental pollutant for human health. Atmospheric PM, made up of primary and secondary particles, is one of the main atmospheric pollutants. Primary PM is generated by road transport, combustion (mainly coal burning) and other industrial processes, while secondary PM is generated through chemical reactions between different primary particulates in the atmosphere. Particulates are classified into different categories based on their aerodynamic diameters. The fine PM (PM_{2.5}, particle size 0.1–2.5 µm) considered in this study can penetrate the alveoli and terminal bronchioles. PM exposure has significant effects on people with asthma and allergic rhinitis (Dunlop et al. 2016, Luo et al. 2020, Pawankar et al. 2020), but the mechanism by which PM affects people with these diseases is not fully understood (Wu et al. 2018). Its interaction with *A. artemisiifolia* pollen has also been studied (Gleason et al. 2014, Magyar et al. 2022), indicating higher levels of pollen sensitization when they co-occur.

We first assessed the overlap of NO₂ and PM_{2.5} concentrations in European territory with a co-occurrence of *A. artemisiifolia* and *O. communa* in current and future scenarios, considering both climate change scenarios and variations in pollutant emissions. We chose to use the previous climate change predictions from Iannella et al. (2019a) since they are the results (and can act as a proxy; see Rasmussen et al. 2017) of CO₂ and a warmer climate, variables that

have positive relationships with pollen production (Hamaoui-Laguel et al. 2015, El Kelish et al. 2014).

Then, we mapped the areas of significant threat to human health, considering population density and evaluating risk for each European country. Finally, we carried out a hotspot analysis to assess European regions in which a statistically significantly high risk of potential allergenicity of *A. artemisiifolia* could occur.

Methods

Geographical data and spatial analyses

All of the spatial processes are based on the geographical data of Iannella et al. (2019a; available upon request). The vector data deriving from the intersection of the three-class climatic ecological niche models inferred for the two target species were used as a base for the analyses performed in the present research. Specifically, these maps are composed of all of the combinations of three suitability classes (class 1: low suitability; class 2: medium suitability; class 3: high suitability, which represent the 0.33–0.66–0.99 suitability intervals, respectively, as reported in Fig. S1a, together with the target species' occurrences). Consequently, certain combinations (such as *O. communa* scoring the lowest class (1)–*A. artemisiifolia* scoring the highest class (3) or others, such as 1–2 and 2–3, corresponding to the *O. communa*–*A. artemisiifolia* combination) pose the highest risk to human health. This is because *O. communa* may lack the suitable climatic conditions necessary for co-occurrence and, therefore, cannot effectively act as a biological control agent for *A. artemisiifolia*. These spatial data were gathered for the current and the 2050 future climatic scenarios (specifically, Representative Concentration Pathway 8.5, hereafter named RCP8.5).

Spatial data for air pollutants were obtained from the European Environment Agency (EEA) geospatial data catalogue (<https://sdi.eea.europa.eu/catalogue/srv/eng/catalog.search#/home>). Two of the most dangerous air pollutants for health were chosen for the current scenario (with 2018 being the last year available), namely NO₂ and fine PM (PM_{2.5}; Fig. S1b,c). These also represent the only pollutants for which future estimates are available to date based on RCP8.5 (Colette et al. 2013). Thus, an RCP8.5-based future data spatialization was performed, following the indications of Colette et al. (2013), so as to perform spatial analyses based on consistent data (i.e., projections of both climatic suitability-based co-occurrence maps and pollutant distributions).

Demographic data arranged according to the Nomenclature of Territorial Units for Statistics (NUTS3) classification were obtained from the Eurostat web portal (<https://appsso.eurostat.ec.europa.eu>) for both the current and future years (in our case, 2018 and 2050). NUTS3 represents a hierarchical system of subdivision of the economic territory of the European Union (EU) and the UK for the collection, development and harmonization of European statistics at the regional level. Furthermore, due to the withdrawal of the UK from the EU, data for future demographic projections were obtained from the UK Office for National Statistics (<https://www.ons.gov.uk/peoplepopulationandcommunity/populationandmigration/populationprojections/>). These data are represented in Fig. S1d.

We processed pollutant data based on the classification of the EEA (Ortiz et al. 2020), which suggests division into six classes of increasing concentration. This permitted us to operate with comparable spatial classes of health risk for both NO₂ and PM_{2.5}. In addition, considering that the same number of classes was given

from Iannella et al. (2019a) for health risk, an appropriate index was built regarding both the species co-occurrence and the air pollutants. We calculated this as the sum of both pollutants and co-occurrence suitability classes for each feature. Finally, the results obtained were weighted according to the demographic value (i.e., multiplying it by the corresponding human population density value; Fig. 1), thus taking into account the exposure of a high (or low) number of individuals, considering the fact that more human-dense areas bear a higher probability of health issues.

The hotspot analysis was carried out in *ArcGIS Pro 3.0*, which identifies statistically significant hotspots and coldspots using the Getis–Ord Gi* (Ord & Getis 1995, Getis & Ord 2010) statistic. Consideration of the scale of analysis, the distribution of the data, outliers and potential biases is crucial to ensure reliable and meaningful results are obtained when utilizing the Getis–Ord Gi* statistic in spatial analysis (Haining 1993). For instance, this statistic can be influenced by the presence of spatial biases (e.g., unequal population densities or sampling biases), which can introduce artefacts and affect the reliability of hotspot or coldspot detection (Fotheringham & Wong 1991). Thus, we incorporated into the process the false rate detection correction (ESRI Inc. 2022), a procedure to potentially adjust the critical p-value thresholds, accounting for multiple testing and spatial dependency. The incorporation of this supplementary algorithm to assess statistical significance and uncertainty improves the stability and interpretation of the spatial statistics (Anselin 1996). Moreover, given the complete coverage of the spatial data we used in relation to our study area and the nature of the data themselves (continuous rasters), any possible spatial bias is further lowered.

The Getis–Ord Gi* statistic analysis thus results in p-values determining the statistical significance of the hotspot or coldspot and a coupled z-value, referring to the 'strength' of the spatial feature, as in studies of biogeography (Iannella et al. 2019b, 2020), nature conservation (Iannella et al. 2021b), economics (Sánchez-Martin et al. 2019) and human health (De Giglio et al. 2019).

To encompass all of the possible spatial patterns in terms of variability of the target species co-occurrence classes, the chosen atmospheric pollutants (NO₂ and PM_{2.5}) and the population density, the species' co-occurrence- and air pollutants-based index, calculated as described above, was used to infer the hotspots. The 'inverse distance' spatial conceptualization sub-algorithm available in the hotspot analysis of *ArcGIS Pro 3.0* was used to down-weight the influence of features based on distance decay (i.e., all features impact or influence each other, but the farther away a feature is, the smaller the impact it has; this sub-procedure was chosen as it particularly well suited for analysing continuous data; ESRI Developer 2011). In this case, the features considered by the hotspot analysis are the products of the index we built, which is the value reported for all of the territorial units deriving from the NUTS3 database.

Finally, we assessed possible statistically significant differences in the z-values obtained from the hotspot analysis performed for both current and future scenarios for each country considered.

Abbreviations used

To optimize layout, country names reported in the figures are abbreviated as follows: Albania (AL), Austria (AT), Belgium (BE), Bulgaria (BG), Croatia (HR), Czechia (CZ), Denmark (DK), Estonia (EE), Finland (FI), France (FR), Germany (DE), Greece (EL), Hungary (HU), Iceland (IS), Ireland (IE), Italy (IT), Latvia (LV), Liechtenstein (LI), Lithuania (LT), Luxembourg (LU),

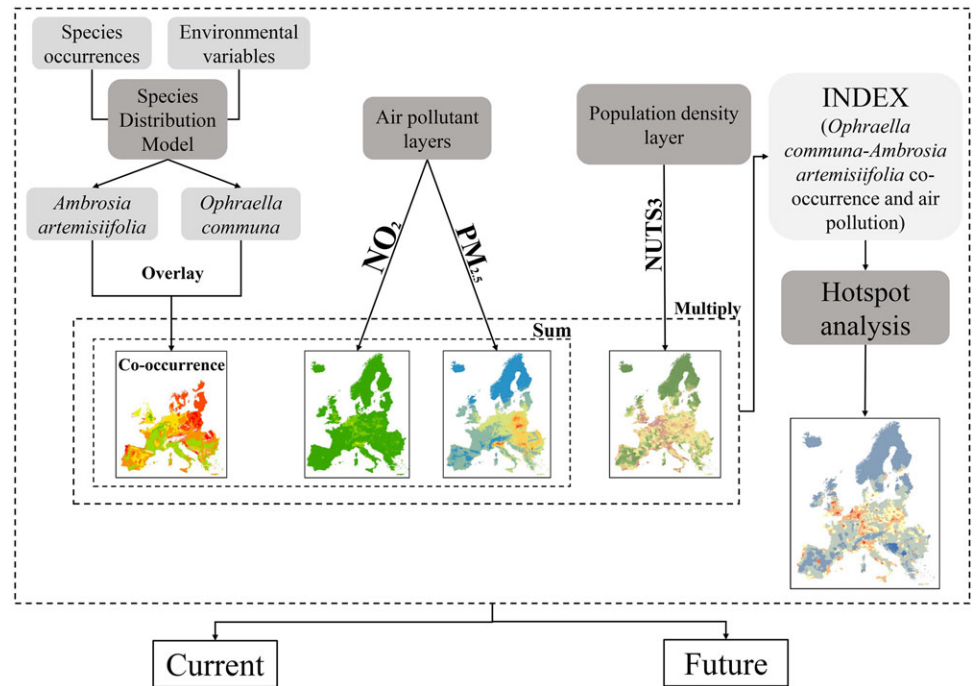


Figure 1. Complete workflow adopted for the analyses. NO₂ = nitrogen dioxide; PM_{2.5} = fine particulate matter (particle size 0.1–2.5 µm).

Montenegro (ME), the Netherlands (NL), North Macedonia (MK), Norway (NO), Poland (PL), Portugal (PT), Romania (RO), Serbia (RS), Slovakia (SK), Slovenia (SI), Spain (ES), Sweden (SE), Switzerland (CH), Turkey (TR) and the United Kingdom (UK).

Results

The hotspot analysis considering the areas where both the highest z-scores (Fig. 2a) and the three highest confidence intervals ($p = 90\%$, 95% and 99% ; Fig. 2b) occur highlighted a current pattern of 212 hotspots of potential allergenicity of *A. artemisiifolia* in Europe (a complete and detailed list of the NUTS3 hotspots is given in Table S1a). The highest percentage of hotspots ranges from the results obtained for the Netherlands (7.09% of the entire national territory) to Norway (0.06%; Fig. 2c).

The hotspot analysis also highlighted 240 hotspots for 2050 (Fig. 3a,b; a complete and detailed list of the NUTS3 hotspots is given in Table S1b), in which the highest values are reported for the Netherlands (15.04%) and the UK (6.70%), while the lowest values are reported for Norway (0.11%) and Romania (0.10%; Fig. 3c).

There were two noticeable coldspots (in terms of low z-score values) in the Balkans in the current scenario and in the future projection. In fact, a p-value between 0.85 and 0.88 was obtained for these areas, which therefore does not exceed the threshold of 0.90 (chosen to identify significant patches).

The change between the current and future scenarios varied amongst the countries (Fig. 4). In general, and for practically all of the countries, a considerable increase in the z-values in each of the hotspots considered (the patches with the highest confidence intervals) is observed, with the northern European countries reporting the highest positive changes in the future (Fig. 4). In addition, when considering percentage change in number of hotspots, the greatest hotspot changes are predicted for the Netherlands (+7.95%), Portugal (+3.66%), Switzerland (+3.47%), the UK (+3.15%), Spain (+1.37%), Ireland (+0.70%) and Croatia (+0.27%; Table S2). Belgium was the only country for which a

negative difference was reported, with the number of hotspots within its borders decreasing by 0.58% (Table S2).

When assessing the differences between the z-values obtained for the current and future conditions for the various countries, we found no normal distributions. Therefore, we performed a Kruskal–Wallis test (significance at $p = 0.05$) amongst all of these, obtaining significant differences between each ($\chi^2 = 344.319$, $df = 69$, $p = 0$). When comparing each pair for a country (i.e., current–future) using a Mann–Whitney U test (significance at $p = 0.05$), we also obtained statistically significant differences between all pairs for every country; the results for each pair are reported in Table S3.

Discussion

This study incorporates the impacts of climate change on the distribution of *A. artemisiifolia* and one of its antagonists (*O. communa*), relating their predicted co-occurrence to both the air quality and population density and finally assessing overall impacts at a continental scale.

In Iannella et al. (2019a), ecological differences were found between the climatic preferences of the two study species, highlighting the greater adaptability of *A. artemisiifolia* compared to *O. communa*. In fact, many studies (Zhou et al. 2010, Bonini et al. 2016, Iannella et al. 2019a) confirm that *O. communa*, from a bioclimatic point of view, cannot stem the advance of *A. artemisiifolia* alone, as it is more sensitive to adverse climatic conditions than its host plant. Despite this, the biocontrol exerted by this leaf beetle on this invasive plant exists (Bonini et al. 2016) and could be of primary importance due to the harmful effects of *A. artemisiifolia* on the agricultural and health sectors (Schaffner et al. 2020).

The study of Iannella et al. (2019a) focused on climatic and biogeographical aspects only, whereas this study considers the existing co-occurrence between the two target species in parallel with other factors, such as some of the most dangerous air

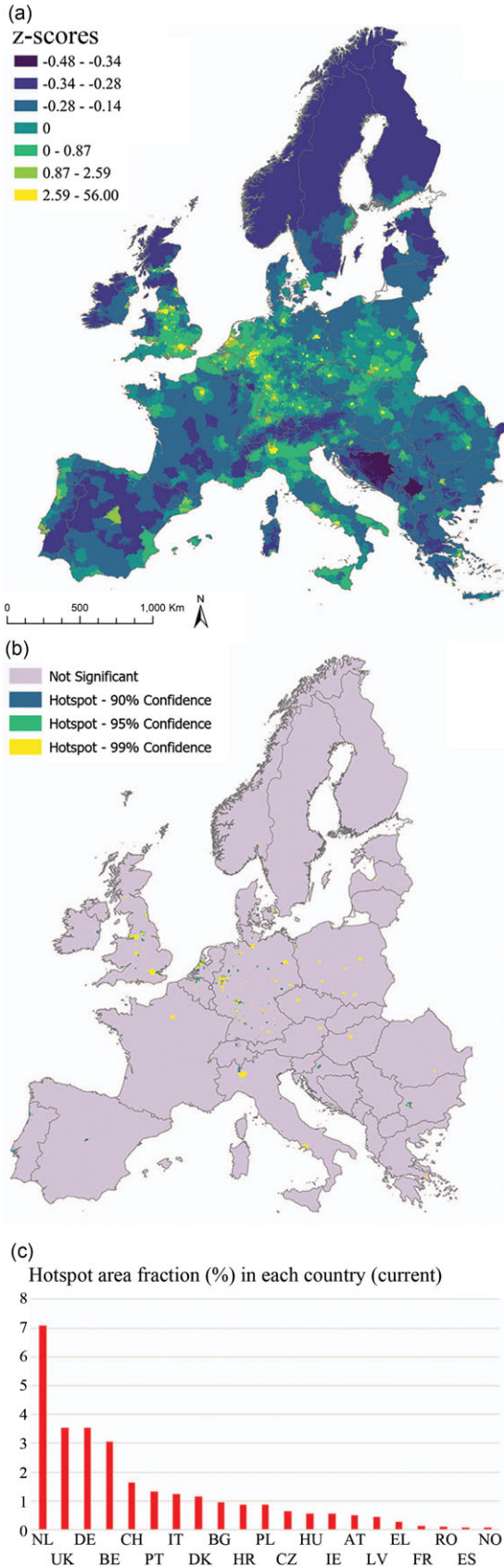


Figure 2. Current hotspots built upon the index based on *Ophraella communa*-*Ambrosia artemisiifolia* co-occurrence and air pollution in terms of the (a) z-scores, (b) p-values and (c) percentage of the total national territory covered by those hotspots (see text for nation abbreviations).

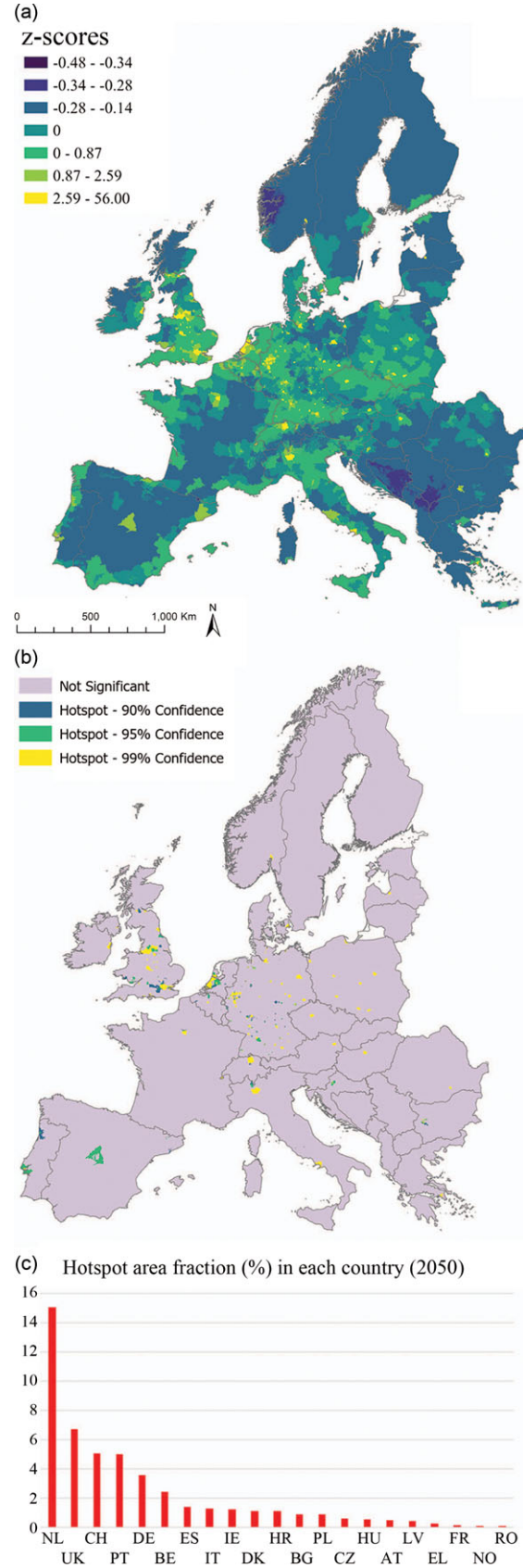


Figure 3. Hotspots in 2050 built upon the index based on *Ophraella communa*-*Ambrosia artemisiifolia* co-occurrence and air pollution in terms of the (a) z-scores, (b) p-values and (c) percentage of the total national territory covered by those hotspots (see text for nation abbreviations).

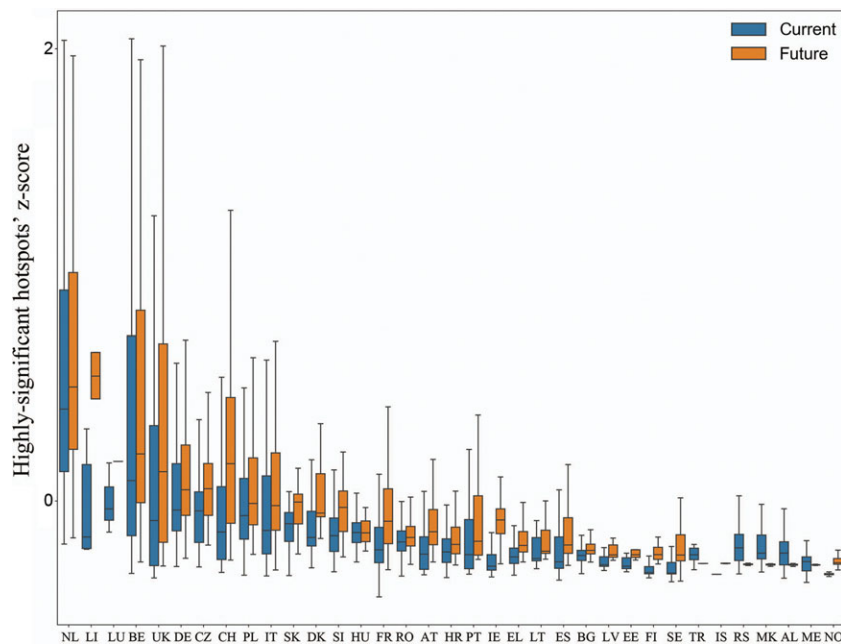


Figure 4. The z-values of the highest confidence interval hotspots for both current and 2050 scenarios for each country (see text for nation abbreviations).

pollutants (NO₂ and PM_{2.5}) and human population density. This permits us to statistically summarize and map the connection between a high population density and low air quality (reported to lead to a higher incidence of respiratory diseases) and the pollution-related sensitization towards allergens (Polosa et al. 2002, Diaz-Sanchez et al. 2003, Ledda et al. 2011).

Our hotspot analysis represents a diversified, complex and statistically robust geographical asset that mainly highlights current hotspots in northern European countries (the Netherlands, the UK, Germany and Belgium), where the corresponding hotspot density values (in terms of the hotspot:country area ratio) are higher than 3%. This is consistent with Burbach et al. (2009), who found a rate of more than 80% in terms of pollen sensitization in their population samples for these countries. Regarding the future scenario, in addition to the previously mentioned states, Switzerland and Portugal also show very high hotspot densities (>5%).

Other European countries with known allergy issues caused by *A. artemisiifolia*, such as Italy and Hungary (Bonini et al. 2016, Márk et al. 2016), also resulted in high hotspot densities in the current and future scenarios, although they reported a much lower percentage than the countries with the highest densities in the present study. Indeed, if one observes the spatial model in more detail, a high density of hotspots can be found in a few municipalities (e.g., Milan, Budapest, etc.), which are and will be at high allergy risk. In fact, Bonini et al. (2022) found that the severity of seasonal allergies caused by *A. artemisiifolia* is closely connected to the levels of the plant's pollen present in the atmosphere, with symptom intensity levels associated with specific pollen concentration thresholds. In addition, large municipalities (e.g., Paris, Warsaw, London, Naples, etc.), with strong annual average concentrations of air pollutants and high population densities, are predicted by our analyses to suffer significantly from the presence of *A. artemisiifolia*, particularly in areas where *O. communa*'s ability to act as a biological control agent is not favoured (Iannella et al. 2019a). In addition, the levels at which *O. communa* can control *A. artemisiifolia* are dependent on the seasonality of some climatic factors (Augustinus et al. 2020a) and

number of generations (Mouquet et al. 2018), or a combination of the two (Augustinus et al. 2020b), making the framework even more difficult to manage.

Our findings are in line with those of Lake et al. (2017), demonstrating that the sensitization to *A. artemisiifolia* pollen will significantly increase between 2041 and 2060, impacting the European human population. According to the study of Lake et al. (2017), much of the current and future variation is due to the northward expansion of *A. artemisiifolia*, which is consistent with the expansion already observed in the USA (Ziska et al. 2011) and in agreement with our results, showing a shift of the greatest hotspots towards northern Europe. Therefore, if sensitization continues to increase even in areas where *A. artemisiifolia* is relatively rare to date (Lake et al. 2017), some of the countries mentioned above will face severe health and economic risks. Our results corroborate and strengthen the findings of Sun et al. (2017) and Schaffner et al. (2020), who highlighted the often-underestimated effects of *A. artemisiifolia* pollen on human health. In fact, considering that the approach used in Sun et al. (2017) and Schaffner et al. (2020) does not involve human density and other pollutants as we do in our analyses, these results are somewhat alarming. Some areas that are not highlighted by these habitat suitability-based papers for these species represent well-defined (and statistically significant) health risk hotspots, since pollutants and human population density play major roles in this. For instance, this is the case for some of the southern Italy, northern France and central Spain hotspots, where suitability is predicted to be medium (Iannella et al. 2019a) or low (Rasmussen et al. 2017). The multifaceted nature of this management issue can be highlighted using the following example: the major predicted hotspot for southern Italy falls within the district around Naples, in which *A. artemisiifolia*-related pollinosis is not currently recorded. However, the plant was recently found in Latium, a region that borders Campania, the administrative region with Naples as its capital. In the area between these regions are two wide agricultural districts (European Environmental Agency, 2019). Taken together, the vehicular traffic involved in the trade of agricultural goods and

the fact that *A. artemisiifolia* spreads through both road dispersal (Lemke et al. 2019) and after soil disturbance (e.g., in agricultural contexts) suggest that colonization will be very likely. As a further issue that could possibly worsen the problem, future climatic projections report that there will be favourable conditions for *A. artemisiifolia* range expansion (Rasmussen et al. 2017, Iannella et al. 2019a).

Control of *A. artemisiifolia* plants is difficult due to their long-lived seeds, resistance to herbicides and ability to regrow after cutting (Brewer & Oliver 2009, Lommen et al. 2018). In addition, recent research has reported the rapid evolution of this plant, resulting in individuals converging towards adaptive traits to a warming climate (Sun et al. 2020). Nevertheless, monitoring the areas subject to the invasion of *A. artemisiifolia* is a crucial element of limiting its spread (Bullock et al. 2012) and of controlling the dispersion of its seeds over long distances, primarily through human activities. Therefore, the strategies suggested for controlling *A. artemisiifolia* are to carefully monitor the distribution of *O. communa* for possible biocontrol applications, bearing in mind that some *O. communa* populations were recently found to rapidly adapt to colder temperatures (Tian et al. 2022) as a result of induced tolerance through trophic transmission (Tian et al. 2023). Thus, as has occurred for other human-mediated translocations aimed at controlling undesired plants, introductions of *O. communa* for biocontrol could also benefit from genetically (Stahlke et al. 2022) and physiologically (Tian et al. 2023) informed studies.

In addition, particular attention should be paid to the improvement of air quality through the concurrent implementation of targeted pollen monitoring strategies. This work could first be implemented in countries that are predicted to suffer more from the future risk increase (i.e., the future appearance or increase of hotspots), although a shared European strategy would be the best approach.

Conclusions

The hotspot analysis indicates that, in Europe, the greatest threat to human health by *A. artemisiifolia* pollen could occur in the north/north-eastern part of the continent, where many countries will become more exposed to such health risks in the future. However, the most significant threats will mostly occur in large cities, where problems due to high population density and air pollutants already exist and where respiratory diseases are and will remain persistent.

Given the rapid spread of *A. artemisiifolia*, monitoring and control measures (using *O. communa*) are essential to stem the advance of this invasive plant. Furthermore, implementing effective strategies to reduce air pollutants could provide significant savings in economic terms and of human lives (Mouquet et al. 2018, Schaffner et al. 2020).

To our knowledge, this study is the first to relate the co-occurrence amongst these target species, air pollutants and population density using advanced geostatistical methods. In light of the broad applicability of this framework, our approach can be applied to any type of invasive plant species and corresponding pests, being applicable to health, agricultural to nature conservation sectors and supporting local policymakers in smart planning processes at all spatial scales. In addition, we provide a starting point for other studies focusing on the relationships between invasive species, human-induced pollution and climate change. Our research sheds light on the multifaceted problems caused by

invasive species, emphasizing the threats that they pose to human well-being. By highlighting the negative effects of *A. artemisiifolia* and the interaction of its pollen with air pollutants, this study raises awareness of the importance of managing invasive species to protect native ecosystems and maintain ecological balance. In addition, it helps with the prioritization of monitoring and management efforts. This information can be utilized to implement targeted conservation measures and allocate resources effectively to mitigate the health impacts caused by invasive plants and air pollutants. This paper further advocates for the development of a European strategy to monitor and control *A. artemisiifolia*. By emphasizing the large hotspots of health risk within some national territories, this study highlights the need for collaborative and coordinated efforts to control *A. artemisiifolia* at the European level. This approach promotes the exchange of knowledge and the development of policy frameworks, fostering a unified approach to invasive species management and environmental conservation.

Supplementary material. To view supplementary material for this article, please visit <https://doi.org/10.1017/S037689292300022X>.

Acknowledgements. None.

Financial support. None.

Competing interests. The authors declare none.

Ethical standards. None.

References

- Anselin L (1996) The Moran scatterplot as an ESDA tool to assess local instability in spatial association. In: *Spatial Analytical Perspectives on GIS* (ch. 8). London, UK: Routledge.
- Arim M, Abades SR, Neill PE, Lima M, Marquet PA (2006) Spread dynamics of invasive species. *Proceedings of the National Academy of Sciences of the United States of America* 103: 374–378.
- Ascensão F, Capinha C (2017) Aliens on the move: transportation networks and non-native species. In: L Borda-de-Água, R Barrientos, P Beja, HM Pereira (eds), *Railway Ecology* (pp. 65–80). Cham, Switzerland: Springer.
- Augustinus B, Lommen ST, Fogliatto S, Vidotto F, Smith T, Horvath D, et al. (2020a) In-season leaf damage by a biocontrol agent explains reproductive output of an invasive plant species. *NeoBiota* 55: 117–146.
- Augustinus B, Sun Y, Beuchat C, Schaffner U, Müller-Schärer H (2020b) Predicting impact of a biocontrol agent: integrating distribution modeling with climate-dependent vital rates. *Ecological Applications* 30: e02003.
- Barnes ER, Jhala AJ, Knezevic SZ, Sikkema PH, Lindquist JL (2018) Common ragweed (*Ambrosia artemisiifolia* L.) interference with soybean in Nebraska. *Agronomy Journal* 110: 646–653.
- Beggs PJ, Bambrick HJ (2005) Is the global rise of asthma an early impact of anthropogenic climate change? *Environmental Health Perspectives* 113: 915–919.
- Blackburn TM, Pyšek P, Bacher S, Carlton JT, Duncan RP, Jarošík V, et al. (2011) A proposed unified framework for biological invasions. *Trends in Ecology & Evolution* 26: 333–339.
- Bonini M, Monti GS, Pelagatti MM, Ceriotti V, Re EE, Bramè B, et al. (2022) Ragweed pollen concentration predicts seasonal rhino-conjunctivitis and asthma severity in patients allergic to ragweed. *Scientific Reports* 12: 15921.
- Bonini M, Šikoparija B, Prentović M, Cislighi G, Colombo P, Testoni C, et al. (2016) A follow-up study examining airborne *Ambrosia* pollen in the Milan area in 2014 in relation to the accidental introduction of the ragweed leaf beetle *Ophraella communa*. *Aerobiologia* 32: 371–374.
- Brewer CE, Oliver LR (2009) Confirmation and resistance mechanisms in glyphosate-resistant common ragweed (*Ambrosia artemisiifolia*) in Arkansas. *Weed Science* 57: 567–573.

- Bullock J, Chapman D, Schafer S, Roy D, Girardello M, Haynes T, et al. (2012) *Assessing and Controlling the Spread and the Effects of Common Ragweed in Europe*. Final Report to the European Commission, DG Environment. Luxembourg: Publications Office of the European Union.
- Burbach GJ, Heinzlering LM, Röhelt C, Bergmann KC, Behrendt H, Zuberbier T (2009) Ragweed sensitization in Europe – GA(2)LEN study suggests increasing prevalence. *Allergy* 64: 664–665.
- Buttenschön RM, Waldspühl S, Bohren C (2010) Guidelines for Management of Common Ragweed, *Ambrosia artemisiifolia* [www document]. URL https://internationalragweedsociety.org/smarter/wp-content/uploads/Ambrosia-management-guidelines-2009_AMBROSIA-EUPHRESCO_eng.pdf
- Cardarelli E, Musacchio A, Montagnani C, Bogliani G, Citterio S, Gentili R (2018) *Ambrosia artemisiifolia* control in agricultural areas: effect of grassland seeding and herbivory by the exotic leaf beetle *Ophraella communa*. *NeoBiota* 38: 1.
- Chapman DS, Makra L, Albertini R, Bonini M, Páldy A, Rodinkova V, et al. (2016) Modelling the introduction and spread of non-native species: international trade and climate change drive ragweed invasion. *Global Change Biology* 22: 3067–3079.
- Chauvel B, Dessaint F, Cardinal-Legrand C, Bretagnolle F (2006) The historical spread of *Ambrosia artemisiifolia* L. in France from herbarium records. *Journal of Biogeography* 33: 665–673.
- Cheng X, Frank U, Zhao F, Capella JR, Winkler JB, Schnitzler J-P, et al. (2023) Plant growth traits and allergenic potential of *Ambrosia artemisiifolia* pollen as modified by temperature and NO₂. *Environmental and Experimental Botany* 206: 105193.
- Colautti RI, MacIsaac HJ (2004) A neutral terminology to define ‘invasive’ species. *Diversity and Distributions* 10: 135–141.
- Colette A, Bessagnet B, Vautard R, Szopa S, Rao S, Schucht S, et al. (2013) European atmosphere in 2050, a regional air quality and climate perspective under CMIP5 scenarios. *Atmospheric Chemistry and Physics* 13: 7451–7471.
- De Giglio O, Fasano F, Diella G, Lopuzzo M, Napoli C, Apollonio F, et al. (2019) *Legionella* and legionellosis in touristic-recreational facilities: influence of climate factors and geostatistical analysis in southern Italy (2001–2017). *Environmental Research* 178: 108721.
- De Simone W, Iannella M, D’Alessandro P, Biondi M (2020) Assessing influence in biofuel production and ecosystem services when environmental changes affect plant–pest relationships. *GCB Bioenergy* 12: 864–877.
- Dernovici SA, Teshler MP, Watson AK (2006) Is sunflower (*Helianthus annuus*) at risk to damage from *Ophraella communa*, a natural enemy of common ragweed (*Ambrosia artemisiifolia*)? *Biocontrol Science and Technology* 16: 669–686.
- Diaz-Sanchez D, Proietti L, Polosa R (2003) Diesel fumes and the rising prevalence of atopy: an urban legend? *Current Allergy and Asthma Reports* 3: 146–152.
- Dukes JS, Mooney HA (1999) Does global change increase the success of biological invaders? *Trends in Ecology & Evolution* 14: 135–139.
- Dunlop J, Matsui E, Sharma HP (2016) Allergic rhinitis: environmental determinants. *Immunology and Allergy Clinics* 36: 367–377.
- El Kelish A, Zhao F, Heller W, Durner J, Winkler JB, Behrendt H, et al. (2014) Ragweed (*Ambrosia artemisiifolia*) pollen allergenicity: SuperSAGE transcriptomic analysis upon elevated CO₂ and drought stress. *BMC Plant Biology* 14: 176.
- ESRI Developer (2011) Hot Spot Analysis (Getis–Ord Gi*) (Spatial Statistics) [www document]. URL <https://pro.arcgis.com/en/pro-app/latest/tool-refere/nc/spatial-statistics/hot-spot-analysis.htm>
- ESRI Inc. (2022) *ArcGIS Pro 3.0*. Redlands, CA, USA: ESRI Inc.
- European Environment Agency (2019). CORINE Land Cover 2018 (Version 18.5.1). European Environment Agency. <https://land.copernicus.eu/pan-eu/ropean/corine-land-cover/clc2018>
- Fotheringham AS, Wong DW (1991) The modifiable areal unit problem in multivariate statistical analysis. *Environment and Planning A*, 23(7): 1025–1044.
- Fumanal B, Chauvel B, Bretagnolle F (2007) Estimation of the pollen and seed production of common ragweed in Europe. *Annals of Agricultural and Environmental Medicine (AAEM)* 14: 233–236.
- Getis A, Ord JK (2010) The analysis of spatial association by use of distance statistics. In: L Anselin, SJ Rey (eds), *Perspectives on Spatial Data Analysis* (pp. 127–145). Cham, Switzerland: Springer.
- Ghiani A, Aina R, Asero R, Bellotto E, Citterio S (2012) Ragweed pollen collected along high-traffic roads shows a higher allergenicity than pollen sampled in vegetated areas. *Allergy* 67: 887–894.
- Gil JD, Cohn AS, Duncan J, Newton P, Vermeulen S (2017) The resilience of integrated agricultural systems to climate change. *Wiley Interdisciplinary Reviews: Climate Change* 8: e461.
- Gleason JA, Bielory L, Fagliano JA (2014) Associations between ozone, PM_{2.5}, and four pollen types on emergency department pediatric asthma events during the warm season in New Jersey: a case–crossover study. *Environmental Research* 132: 421–429.
- Grewling L, Bogawski P, Kryza M, Magyar D, Šikoparija B, Skjøth CA, et al. (2019) Concomitant occurrence of anthropogenic air pollutants, mineral dust and fungal spores during long-distance transport of ragweed pollen. *Environmental Pollution* 254: 112948.
- Haining R (1993) *Spatial Data Analysis in the Social and Environmental Sciences*. Cambridge, UK: Cambridge University Press.
- Hamaoui-Laguel L, Vautard R, Liu L, Solmon F, Viovy N, Khvorostyanov D, et al. (2015) Effects of climate change and seed dispersal on airborne ragweed pollen loads in Europe. *Nature Climate Change* 5: 766–771.
- Hegi G (1918) *Illustrierte Flora von Mittel-Europa*. Munich, Germany: J. F. Lehmann Verlag.
- Iannella M, D’Alessandro P, Biondi M (2019b) Entomological knowledge in Madagascar by GBIF datasets: estimates on the coverage and possible biases (Insecta). *Fragmenta Entomologica* 51: 1–10.
- Iannella M, De Simone W, D’Alessandro P, Biondi M (2021a) Climate change favours connectivity between virus-bearing pest and rice cultivations in Sub-Saharan Africa, depressing local economies. *PeerJ* 9: e12387.
- Iannella M, De Simone W, D’Alessandro P, Console G, Biondi M (2019a) Investigating the current and future co-occurrence of *Ambrosia artemisiifolia* and *Ophraella communa* in Europe through ecological modelling and remote sensing data analysis. *International Journal of Environmental Research and Public Health* 16: 3416.
- Iannella M, Fiasca B, Di Lorenzo T, Biondi M, Di Cicco M, Galassi DM (2020) Jumping into the grids: mapping biodiversity hotspots in groundwater habitat types across Europe. *Ecography* 43: 1825–1841.
- Iannella M, Fiasca B, Di Lorenzo T, Di Cicco M, Biondi M, Mammola S, et al. (2021b) Getting the ‘most out of the hotspot’ for practical conservation of groundwater biodiversity. *Global Ecology and Conservation* 31: e01844.
- Jin J, Zhao M, Zhou Z, Wang R, Guo J, Wan F (2023) Host-plant selection behavior of *Ophraella communa*, a biocontrol agent of the invasive common ragweed *Ambrosia artemisiifolia*. *Insects* 14: 334.
- Kim DE (2018) Management system of invasive alien species threatening biodiversity in Korea and suggestions for the improvement. *Journal of Environmental Impact Assessment* 27: 33–55.
- Lake IR, Jones NR, Agnew M, Goodess CM, Giorgi F, Hamaoui-Laguel L, et al. (2017) Climate change and future pollen allergy in Europe. *Environmental Health Perspectives* 125: 385–391.
- Ledda C, Fiore M, Mauceri C, Sciacca S, Ferrante M (2011) Allergic rhinitis and asthma in children and indoor pollution. *Igiene e sanità pubblica* 67: 467–480.
- Lenke A, Kowarik I, von der Lippe M (2019) How traffic facilitates population expansion of invasive species along roads: the case of common ragweed in Germany. *Journal of Applied Ecology* 56: 413–422.
- Lewis JS, Farnsworth ML, Burdett CL, Theobald DM, Gray M, Miller RS (2017) Biotic and abiotic factors predicting the global distribution and population density of an invasive large mammal. *Scientific Reports* 7: 1–12.
- Lockwood J, Hoopes M, Marchetti M (2005) Transport vectors and pathways. In: *Invasion Ecology* (pp. 18–37). Malden, MA, USA: Blackwell.
- Lommen E, Suzanne T, Jolidon EF, Sun Y, Eduardo JIB, Müller-Schärer H (2017) An early suitability assessment of two exotic *Ophraella* species (Coleoptera: Chrysomelidae) for biological control of invasive ragweed in Europe. *European Journal of Entomology* 114: 160–169.



- Lommen ST, Jongejans E, Leitsch-Vitalos M, Tokarska-Guzik B, Zalai M, Müller-Schärer H, et al. (2018) Time to cut: population models reveal how to mow invasive common ragweed cost-effectively. *NeoBiota* 39: 53–78.
- Luo G, Zhang L, Hu X, Qiu R (2020) Quantifying public health benefits of PM_{2.5} reduction and spatial distribution analysis in China. *Science of the Total Environment* 719: 137445.
- Magyar D, Krasznai B, Tóth M (2022) Microscopic fungi and other contaminants on airborne pollen grains of ragweed (*Ambrosia artemisiifolia* L.). *Aerobiologia* 38: 217–231.
- Márk Z, Bikov A, Gálffy G (2016) Characteristics of ragweed allergy in Hungary. *Orvosi hetilap* 157: 1989–1993.
- Mazza G, Tricarico E (2018) *Invasive Species and Human Health*. Wallingford, UK: CABI.
- Meng L, Li BP (2005) Advances on biology and host specificity of the newly introduced beetle, *Ophraella communa* Lesage (Coleoptera: Chrysomelidae), attacking *Ambrosia artemisiifolia* (Compositae) in continent of China. *Chinese Journal of Biological Control* 21: 65–69.
- Milanović M, Knapp S, Pyšek P, Kühn I (2020) Linking traits of invasive plants with ecosystem services and disservices. *Ecosystem Services* 42: 101072.
- Misra P, Takigawa M, Khatri P, Dhaka SK, Dimri A, Yamaji K, et al. (2021) Nitrogen oxides concentration and emission change detection during COVID-19 restrictions in north India. *Scientific Reports* 11: 9800.
- Mouttet R, Augustinus B, Bonini M, Chauvel B, Desneux N, Gachet E, et al. (2018) Estimating economic benefits of biological control of *Ambrosia artemisiifolia* by *Ophraella communa* in southeastern France. *Basic and Applied Ecology* 33: 14–24.
- Müller-Schärer H, Lommen STE, Rossinelli M, Bonini M, Boriani M, Bosio G, et al. (2014) *Ophraella communa*, the ragweed leaf beetle, has successfully landed in Europe: fortunate coincidence or threat? *Weed Research* 54: 109–119.
- Müller-Schärer H, Sun Y, Schaffner U (2023) When a plant invader meets its old enemy abroad: what can be learnt from accidental introductions of biological control agents. *Pest Management Science* (epub ahead of print) doi: 10.1002/ps.7390.
- Nishide Y, Fukano Y, Doi H, Satoh T, Inoue H, Boriani M (2015) Origins and genetic diversity of the ragweed beetles, *Ophraella communa* (Coleoptera: Chrysomelidae), that were introduced into Italy and Japan based on an analysis of mitochondrial DNA sequence data. *European Journal of Entomology* 112: 613–618.
- Oduber F, Calvo AI, Blanco-Alegre C, Castro A, Vega-Maray AM, Valencia-Barrera RM, et al. (2019) Links between recent trends in airborne pollen concentration, meteorological parameters and air pollutants. *Agricultural and Forest Meteorology* 264: 16–26.
- Ord JK, Getis A (1995) Local spatial autocorrelation statistics: distributional issues and an application. *Geographical Analysis* 27: 286–306.
- Ortiz AG, Guerreiro C, Soares J (2020) *Air Quality in Europe – 2020 Report*. Luxembourg: Publications Office of the European Union.
- Palmer WA, Goeden RD (1991) The host range of *Ophraella communa* Lesage (Coleoptera: Chrysomelidae). *The Coleopterists Bulletin* 45: 115–120.
- Pawankar R, Wang J-Y, Wang I-J, Thien F, Chang Y-S, Latiff AHA, et al. (2020) Asia Pacific Association of Allergy Asthma and Clinical Immunology White Paper 2020 on climate change, air pollution, and biodiversity in Asia-Pacific and impact on allergic diseases. *Asia Pacific Allergy* 10: e11.
- Plank L, Zak D, Getzner M, Follak S, Essl F, Dullinger S, et al. (2016) Benefits and costs of controlling three allergenic alien species under climate change and dispersal scenarios in Central Europe. *Environmental Science & Policy* 56: 9–21.
- Polosa R, Salvi S, Di Maria GU (2002) Allergic susceptibility associated with diesel exhaust particle exposure: clear as mud. *Archives of Environmental Health: An International Journal* 57: 188–193.
- Pyšek P, Jarošík V, Hulme PE, Kühn I, Wild J, Arianoutsou M, et al. (2010) Disentangling the role of environmental and human pressures on biological invasions across Europe. *Proceedings of the National Academy of Sciences of the United States of America* 107: 12157–12162.
- Rasmussen K, Thyrring J, Muscarella R, Borchsenius F (2017) Climate-change-induced range shifts of three allergenic ragweeds (*Ambrosia* L.) in Europe and their potential impact on human health. *PeerJ* 5: e3104.
- Reinmuth-Selzle K, Kampf CJ, Lucas K, Lang-Yona N, Fröhlich-Nowoisky J, Shiraiwa M, et al. (2017) Air pollution and climate change effects on allergies in the Anthropocene: abundance, interaction, and modification of allergens and adjuvants. *Environmental Science & Technology* 51: 4119–4141.
- Sánchez-Martin J-M, Rengifo-Gallego J-I, Blas-Morato R (2019) Hot spot analysis versus cluster and outlier analysis: an enquiry into the grouping of rural accommodation in Extremadura (Spain). *ISPRS International Journal of Geo-Information* 8: 176.
- Schaffner U, Steinbach S, Sun Y, Skjøth CA, de Weger LA, Lommen ST, et al. (2020) Biological weed control to relieve millions from *Ambrosia* allergies in Europe. *Nature Communications* 11: 1745.
- Seebens H, Blackburn TM, Dyer EE, Genovesi P, Hulme PE, Jeschke JM, et al. (2017) No saturation in the accumulation of alien species worldwide. *Nature Communications* 8: 14435.
- Šikoparija B, Skjøth C, Kübler KA, Dahl A, Sommer J, Radišić P, et al. (2013) A mechanism for long distance transport of *Ambrosia* pollen from the Pannonian Plain. *Agricultural and Forest Meteorology* 180: 112–117.
- Simard M-J, Nurse RE, Page ER, Bourgeois G (2020) Common ragweed (*Ambrosia artemisiifolia*) seed shattering in wheat, corn, and soybean. *Weed Science* 68: 510–516.
- Simberloff D (2009) The role of propagule pressure in biological invasions. *Annual Review of Ecology, Evolution, and Systematics* 40: 81–102.
- Simberloff D, Martin J-L, Genovesi P, Maris V, Wardle DA, Aronson J, et al. (2013) Impacts of biological invasions: what's what and the way forward. *Trends in Ecology & Evolution* 28: 58–66.
- SMARTER Project (2016) Sustainable management of *Ambrosia artemisiifolia* in Europe [www document]. URL <https://internationalragweedsociety.org/smarter/wp-content/uploads/Abstracts-SMARTER-Vianden2016.pdf>
- Soberon J, Peterson AT (2005) Interpretation of models of fundamental ecological niches and species' distributional areas. *Biodiversity Informatics* 2: 1–10.
- Stahlke AR, Bitume EV, Özsoy ZA, Bean DW, Veillet A, Clark MI, et al. (2022) Hybridization and range expansion in tamarisk beetles (*Diorhabda* spp.) introduced to North America for classical biological control. *Evolutionary Applications* 15: 60–77.
- Sun Y, Bossdorf O, Grados RD, Liao Z, Müller-Schärer H (2020) Rapid genomic and phenotypic change in response to climate warming in a widespread plant invader. *Global Change Biology* 26: 6511–6522.
- Sun Y, Zhou Z, Wang R, Müller-Schärer H (2017) Biological control opportunities of ragweed are predicted to decrease with climate change in East Asia. *Biodiversity Science* 25: 1285–1294.
- Tian Z, Chen G, Zhang Y, Ma C, Tian Z, Gao X, et al. (2022) Rapid evolution of *Ophraella communa* cold tolerance in new low-temperature environments. *Journal of Pest Science* 95: 1233–1244.
- Tian Z, Ma C, Zhang Y, Chen H, Gao X, Guo J, et al. (2023) Feeding on rapid cold hardening *Ambrosia artemisiifolia* enhances cold tolerance of *Ophraella communa*. *Frontiers in Plant Science* 14: 1114026.
- Vilà M, Espinar JL, Hejda M, Hulme PE, Jarošík V, Maron JL, et al. (2011) Ecological impacts of invasive alien plants: a meta-analysis of their effects on species, communities and ecosystems. *Ecology Letters* 14: 702–708.
- Vincent G, Deslauriers S, Cloutier D (1992) Problems and eradication of *Ambrosia artemisiifolia* L. in Quebec in the urban and suburban environments. *Allergie et immunologie* 24: 84–89.
- Wayne P, Foster S, Connolly J, Bazzaz F, Epstein P (2002) Production of allergenic pollen by ragweed (*Ambrosia artemisiifolia* L.) is increased in CO₂-enriched atmospheres. *Annals of Allergy, Asthma & Immunology* 88: 279–282.
- Wu J-Z, Ge D-D, Zhou L-F, Hou L-Y, Zhou Y, Li Q-Y (2018) Effects of particulate matter on allergic respiratory diseases. *Chronic Diseases and Translational Medicine* 4: 95–102.
- Zhao F, Elkesh A, Durner J, Lindermayr C, Winkler JB, Ruëff F, et al. (2016) Common ragweed (*Ambrosia artemisiifolia* L.): allergenicity and molecular characterization of pollen after plant exposure to elevated NO₂. *Plant, Cell & Environment* 39: 147–164.
- Zhou Z-S, Chen H-S, Zheng X-W, Guo J-Y, Guo W, Li M, et al. (2014) Control of the invasive weed *Ambrosia artemisiifolia* with *Ophraella communa* and *Epilema strenuana*. *Biocontrol Science and Technology* 24: 950–964.

- Zhou Z-S, Guo J-Y, Chen H-S, Wan F-H (2010) Effects of temperature on survival, development, longevity, and fecundity of *Ophraella communa* (Coleoptera: Chrysomelidae), a potential biological control agent against *Ambrosia artemisiifolia* (Asterales: Asteraceae). *Environmental Entomology* 39: 1021–1027.
- Ziska LH, Caulfield FA (2000) Rising CO₂ and pollen production of common ragweed (*Ambrosia artemisiifolia* L.), a known allergy-inducing species: implications for public health. *Functional Plant Biology* 27: 893–898.
- Ziska LH, Knowlton K, Rogers C, Dalan D, Tierney N, Elder MA, et al. (2011) Recent warming by latitude associated with increased length of ragweed pollen season in central North America. *Proceedings of the National Academy of Sciences of the United States of America* 108: 4248–4251.