

# CAMBRIDGE

**NOW COMPLETE**

## HANDBOOK OF PSYCHIATRY

### Volume 5: The Scientific Foundations of Psychiatry

Edited by **MICHAEL SHEPHERD**

This fifth and final volume of the *Handbook of Psychiatry* presents an overview of those basic sciences which underlie the development of modern psychological medicine. The contributors are an international group of authorities and the topics examined include neurosciences, psychology, ethology, genetics, epidemiology and the social sciences.

Hard covers **£42.50 net**  
Paperback **£17.50 net**

### Volume 4: The Neuroses and Personality Disorders

Edited by **GERALD F. M. RUSSELL**  
and **LIONEL HERSOV**

'Russell and Hersov . . . edit a much more substantial book with many authors of short chapters . . . clearly written, concise, informative and humane.'

*British Medical Journal*  
Hard covers **£40.00 net**  
Paperback **£17.50 net**

### Volume 3: Psychoses of Uncertain Aetiology

Edited by **J. K. WING** and **LORNA WING**

' . . . the standard is very high indeed . . . It is an impressive cast list and the result is an impressive production.'

*British Journal of Clinical Psychology*

'It is a very thorough and stimulating book with comprehensive reviews of recent work and, in general, a concise assimilation of the diverse approaches, theories and evidence from research. . .'

*British Journal of Medical Psychology*  
Hard covers **£30.00 net**  
Paperback **£10.95 net**

### Volume 2: Mental Disorders and Somatic Illness

Edited by **M. H. LADER**

Hard covers **£40.00 net**  
Paperback **£13.95 net**

### Volume 1: General Psychopathology

Edited by **MICHAEL SHEPHERD** and  
**O. L. ZANGWILL**

Hard covers **£30.00 net**  
Paperback **£10.95 net**

**Of related interest . . .**

### Dangerousness

Edited by **CHRISTOPHER D. WEBSTER**, **MARK H. BEN-ARON** and **STEPHEN J. HUCKER**

*Dangerousness* represents a much needed attempt to draw together the most recent views of the legal scholars, social scientists, and clinicians who have thought most deeply about the problems associated with the clinical prediction of dangerous behaviour and the degree of responsibility which should be accepted by the mental health professions.

**£20.00 net**

### The Long-Term Treatment of Functional Psychoses

Needed Areas of Research

**T. HELGASON**

Organizational, patient and public health aspects of long-term treatment of functional psychoses are described in this book and areas are pinpointed where more information is required. The workshop on which the volume is based was arranged by the European Medical Research Councils and was attended by leading workers from a number of European countries.

**£30.00 net**

6

**Cambridge University Press**

The Edinburgh Building, Shaftesbury Road, Cambridge CB2 2RU, England

# **RESEARCHER**

A full-time position for a bilingual (French–English) researcher is now available.

The candidate should be a psychiatrist, or a Ph.D. in clinical psychology with research experience, and have an interest in behavior therapy.

Send curriculum vitae to:

**Dr Yves Lamontagne  
Psychiatric Research Center  
Louis-H. Lafontaine Hospital  
7401 Hochelaga St.  
Montréal (Québec)  
H1N 3M5  
Canada**

*Gaps in your scientific knowledge?*

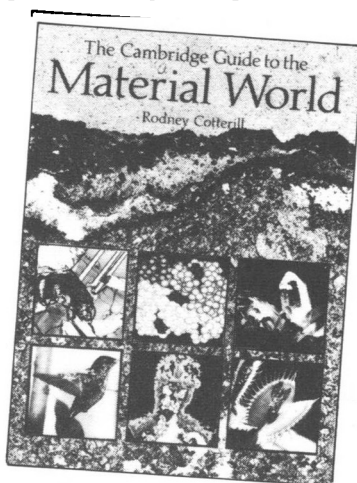
*bring yourself up-to-date with*

## **The Cambridge Guide to the Material World**

**RODNEY COTTERILL**

Rodney Cotterill's *The Cambridge Guide to the Material World* provides a unique single-volume introduction to the materials found on this planet, both organic and inorganic.

The opening sections are devoted to such fundamental topics as the nature of the atom, the structure of molecules and the common states of matter. There then follow chapters on specific classes of material, notably ceramics, glasses, metals, conductors and insulators, liquid crystals, and natural and synthetic polymers. Minerals, water and the living cell are considered in detail and the book concludes with a characteristically lucid discussion of the molecular structure of plant and animal life. Each chapter is packed with fascinating examples and analogies, and closes with a useful summary of what has gone before.



- ★ Numerous full colour photographs and illustrations
- ★ Text and illustrations carefully integrated to ensure maximum clarity and readability
- ★ Topics requiring special attention prominently highlighted in display panels

297 x 210 mm 352 pp. 190 illustrations including 90 in full colour and 30 in two colours

0 521 24640 7

£17.50 net

**CAMBRIDGE UNIVERSITY PRESS**

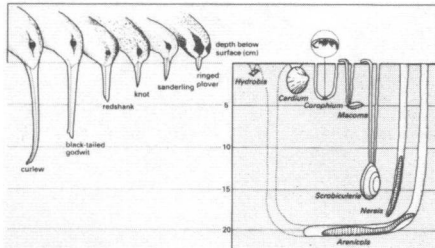
The Edinburgh Building, Shaftesbury Road, Cambridge CB2 2RU, England

(iii)

# CAMBRIDGE EXTENDS YOUR BIOLOGICAL KNOWLEDGE!

## The Cambridge Encyclopedia of Life Sciences

Edited by **ADRIAN FRIDAY**  
and **DAVID S. INGRAM**

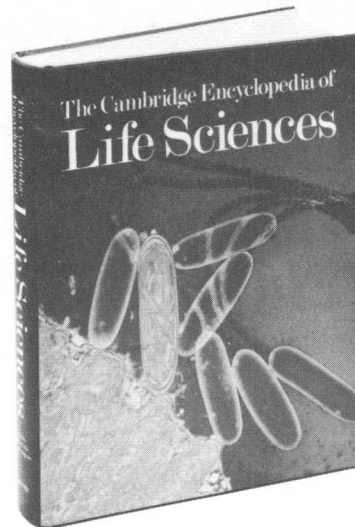


encapsulates the entire world of nature. It delves deep into the microscopic world of cells and simple organisms, and then, in the light of recent research, it explores the animals, plants and environments with which we are more familiar. The final chapters discuss the current debates on evolution and the origin of the human species.

*The Cambridge Encyclopedia of Life Sciences* will prove invaluable to you as a reference book. **£25.00 net**

### CONTENTS

Contributors: Foreword *J. E. Treberne*:  
Introduction: *Part One Processes and  
organisation*: The Cell: The Organism:  
Genetics: Behaviour and Sociobiology:  
Ecology: *Part Two Environments*:  
Biogeographical Zones: Marine  
Environments: Coastal Environments:  
Terrestrial Environments: Freshwater and  
Wetland Environments: Living Organisms  
as Environments: *Part Three Evolution*



prepared diagrams and drawings  
and a superb selection of colourful  
photographs

- ★ classification scheme for living organisms
- ★ lists for further reading
- ★ many learned contributors

**and the fossil record:** The Evolutionary Process: Palaeontology: Early Events in Evolution: Origin and Development of the Land Flora and Fauna: Recent History of the Fauna and Flora: A Classification of Living Organisms: Acknowledgements: Species index: Subject index.

Available from all good booksellers  
For further details please fill in the coupon and return it to  
Annette Duggan, Science Publicity at the address below.

Please send me further details and a free  
colour brochure for:  
*Cambridge Encyclopedia of Life Sciences*

Name .....

Address .....

**Cambridge University Press**

The Edinburgh Building, Shaftesbury Road, Cambridge CB2 2RU, England

# Psychological Medicine

EDITOR: MICHAEL SHEPHERD

ASSISTANT EDITORS: J. L. GIBBONS & K. RAWNSLEY

## EDITORIAL BOARD

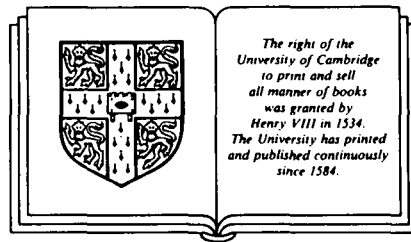
G. W. ASHCROFT	R. A. HINDE	M. L. RUTTER
D. BROADBENT	M. H. LADER	A. D. SMITH
W. F. BYNUM	A. LAWSON	IAN SUTHERLAND
J. A. N. CORSELLIS	W. A. LISHMAN	F. KRÄUPL TAYLOR
T. J. CROW	C. D. MARSDEN	P. VENABLES
D. GRAHAME-SMITH	GEOFFREY ROSE	P. WILLIAMS
J. A. GRAY	G. F. M. RUSSELL	J. K. WING
	O. L. ZANGWILL	

## INTERNATIONAL ADVISORY BOARD

J. DE AJURIAGUERRA <i>Paris</i>	M. KRAMER <i>Baltimore</i>
A. CARLSSON <i>Gothenburg</i>	L. LASAGNA <i>Rochester, New York</i>
O. CREUTZFELDT <i>Göttingen</i>	P. McHUGH <i>Baltimore</i>
B. DAVIES <i>Melbourne</i>	H. B. M. MURPHY <i>Montreal</i>
S. GARATTINI <i>Milan</i>	D. PLOOG <i>Munich</i>
N. GARMEZY <i>Minneapolis</i>	L. ROBINS <i>St Louis</i>
A. JABLENSKY <i>Sofia</i>	J. R. SMYTHIES <i>Alabama</i>

TECHNICAL EDITOR: LUCY NORMAN

VOLUME 15 1985



CAMBRIDGE UNIVERSITY PRESS

CAMBRIDGE

LONDON NEW YORK NEW ROCHELLE  
MELBOURNE SYDNEY

**PUBLISHED BY**  
**THE PRESS SYNDICATE OF THE UNIVERSITY OF CAMBRIDGE**  
**The Pitt Building, Trumpington Street, Cambridge CB2 1RP**  
**32 East 57th Street, New York NY 10022, USA**  
**10 Stamford Road, Oakleigh, Melbourne 3166, Australia**

© Cambridge University Press 1985

*Printed in Great Britain by the University Press, Cambridge*

# Contents of Volume 15

No. 1 FEBRUARY 1985

Editorials: In defence of international classification	L. SAUGSTAD AND Ø. ØDEGÅRD	page 1
Biochemical hypotheses of premenstrual tension syndrome	D. S. JANOWSKY AND J. RAUSCH	3
Measurement of intimacy: conceptual and methodological issues of studying close relationships	E. M. WARING	9
Assay-guided isolation of naturally-occurring neuroactive substances	H. MCILWAIN	15
Lateral ventricular size in schizophrenia: relationship to the disease process and its clinical manifestations	D. G. C. OWENS, E. C. JOHNSTONE, T. J. CROW, C. D. FRITH, J. R. JAGOE AND L. KREEL	27
Clinical correlates of septum pellucidum cavities: an unusual association with psychosis	S. W. LEWIS AND G. C. MEZEY	43
A prospective study of the effects of lithium on thyroid function and on the prevalence of antithyroid antibodies	D. H. MYERS, R. A. CARTER, B. H. BURNS, A. ARMOND, S. B. HUSSAIN AND V. K. CHENGAPA	55
Genetic factors in the sex ratio of major depression	K. R. MERIKANGAS, M. M. WEISSMAN AND D. L. PAULS	63
Positive symptoms and the organization within and between ideas in schizophrenic speech	H. A. ALLEN AND D. S. ALLEN	71
Some cognitive correlates of schizophrenic illnesses	G. ROBERTSON AND P. J. TAYLOR	81
Computer diagnosis of depression and anxiety: the Stirling County Study	J. M. MURPHY, R. K. NEFF, A. M. SOBOL, J. X. RICE JR AND D. C. OLIVIER	99
Parasuicide and unemployment among men in Edinburgh 1968–82	S. PLATT AND N. KREITMAN	113
A test of the repression hypothesis in agoraphobics	W. A. ARRINDELL AND P. M. G. EMMELKAMP	125
An investigation of patients' attitudes to ECT by means of <i>Q</i> -analysis	P. N. COWLEY	131
The factor structure of the Eating Attitudes Test with adolescent schoolgirls	J. E. WELLS, P. A. COOPE, D. C. GABB AND R. K. PEARS	141
The Chinese version of the General Health Questionnaire: does language make a difference?	D. W. CHAN	147
Classification of severe school attendance problems	I. BERG, G. CASSWELL, A. GOODWIN, R. HULLIN, R. MCGUIRE AND G. TAGG	157
The development of a short observation method for the study of the activity and contacts of old people in residential settings	A. J. D. MACDONALD, T. K. J. CRAIG AND L. A. R. WARNER	167
Systematic observation and clinical insight – are they compatible? An experiment in recognizing family interactions	I. EISLER, G. I. SZMUKLER AND C. DARE	173
Brief communication: The List of Threatening Experiences: a subset of 12 life event categories with considerable long-term contextual threat	T. BRUGHA, P. BEBBINGTON, C. TENNANT AND J. HURRY	189
Preliminary communication: A pilot study of mental disorder in Taiwan	T.-A. CHENG	195
Book reviews: <i>Psychopharmacology and Psychotherapy</i>	C. R. B. JOYCE	205
<i>Hypertension</i>	C. J. BULPITT	206
<i>Psychological Perspectives of Essential Hypertension</i>	A. H. MANN	207
<i>Dependence on Tranquillizers</i>	J. MARKS	208
Short reviews		208
Psychiatry in the 1880s		217

## No. 2 MAY 1985

Editorials: Evolutionary psychiatry and the triune brain	P. D. MACLEAN	page 219
Records of psychiatric morbidity in general practice: the National Morbidity Surveys	G. DUNN	223
Depression and dementia: the multi-faceted relationship	B. MAHENDRA	227
Suicides by opium and its derivatives, in England and Wales, 1850–1950	M. J. CLARKE	237
Sensitivity to noise in a community sample: I. Measurement of psychiatric disorder and personality	S. A. STANSFELD, C. R. CLARK, L. M. JENKINS AND A. TARNOPOLSKY	243
Sensitivity to noise in a community sample: II. Measurement of psychophysiological indices	S. A. STANSFELD, C. R. CLARK, G. TURPIN, L. M. JENKINS AND A. TARNOPOLSKY	255
The chronically mentally ill in primary care	D. A. REGIER, J. D. BURKE JR, R. W. MANDERSCHIED AND B. J. BURNS	265
An indigenous conceptualization of reactive depression in Trinidad	R. LITTLEWOOD	275
Social support, social pressures and psychological distress during unemployment	P. ULLAH, M. BANKS AND P. WARR	283
Some cognitive correlates of affective disorders	G. ROBERTSON AND P. J. TAYLOR	297
Cognitive performance of medicated schizophrenics with tardive dyskinesia	D. COLLERTON, A. FAIRBURN AND P. BRITTON	311
Description and measurement of concentration problems in depressed patients	F. N. WATTS AND R. SHARROCK	317
Personality traits and platelet monoamine oxidase in tobacco smokers	L. VON KNORRING AND L. ORELAND	327
CSF monoamine metabolites in chronic schizophrenic patients who attempt suicide	A. ROY, P. NINNAN, A. MAZONSON, D. PICKAR, D. VAN KAMMEN, M. LINNOILA AND S. M. PAUL	335
Carotid endarterectomy: does it improve cognitive or motor functioning?	W. VAN DEN BURG, R. J. SAAN, A. H. VAN ZOMEREN, A. H. BOONTJE, R. HAAXMA AND T. E. WICHMANN	341
Food antibodies in acute psychoses	K. J. B. RIX, J. DITCHFIELD, D. L. J. FREED, D. P. GOLDBERG AND V. F. HILLIER	347
Side-effects of lithium at lower therapeutic levels: the significance of thirst	J. R. KING, P. R. AYLARD AND R. P. HULLIN	355
Effects of the contraceptive pill on sedative responses to clonidine and apomorphine in normal women	J. S. CHALMERS, I. FULLI-LEMAIRE AND P. J. COWEN	363
Investigating renal function during lithium treatment	D. G. WALLER AND J. G. EDWARDS	369
Psychiatric patients who marry each other	J. SHANKS AND P. ATKINS	377
Measuring the burden of psychiatric illness on the family: an evaluation of some rating scales	S. PLATT	383
A study of variables associated with under-attendance at a psychiatric day centre	M. P. BENDER AND S. PILLING	395
Preliminary communications: A study of the classification of mental ill-health in general practice	R. JENKINS, N. SMEETON, M. MARINKER AND M. SHEPHERD	403
Validation of the Italian version of the GHQ in a general practice setting	F. FONTANESI, C. GOBETTI, CH. ZIMMERMANN-TANSELLA AND M. TANSELLA	411
Research report: Central Institute of Mental Health, Mannheim, West Germany	H. HÄFNER AND A. RIECHER	417
Book reviews: <i>The Spectrum of Psychiatric Research</i>	S. PEART	433
<i>Early Bilingualism and Child Development</i>	F. I. S. DE ZULUETA	434
<i>Psychosocial Intervention in Schizophrenia</i>	I. R. H. FALLOON	435
<i>Research Methods in Clinical Psychology</i>	H. J. EYSENCK	436



<i>The Effectiveness of Attached Social Workers in the Management of Depressed Female Patients in General Practice</i> N. HERVEY	page 437
Short reviews	438
Psychiatry in the 1880s	449

## No. 3 AUGUST 1985

Editorials: The prospects for clinical psychoneuroendocrinology: has the curtain been drawn across the neuroendocrine window? R. T. RUBIN	451
Can linkage and marker association resolve the genetic aetiology of psychiatric disorders? Review and argument E. STURT AND P. MCGUFFIN	455
Alcohol dependence and the need to drink: a compulsion? R. CAETANO	463
The role of statistics in psychiatry D. J. HAND	471
Murder under hypnosis R. HARRIS	477
Priorities for research on mental health in primary care settings G. WILKINSON AND P. WILLIAMS	507
Abnormal illness behaviour in young women in a primary care setting: is Briquet's Syndrome a useful category? C. M. DEIGHTON AND A. R. NICOL	515
Illness behaviour and rehospitalization in bipolar affective disorder P. R. JOYCE	521
Multiple memory deficits in Alzheimer-type dementia: implications for pharmacotherapy M. D. KOPELMAN	527
Subtypes of Alzheimer's Dementia: a conceptual analysis and critical review A. F. JORM	543
Problems in evaluating the consequences of disabling illness: the case of multiple sclerosis A. LAWSON, I. ROBINSON AND C. BAKES	555
Psychological correlates of coronary heart disease C. C. TENNANT AND P. M. LANGELUDDECKE	581
The psychiatric correlates of coronary pathology: validity of the GHQ-60 as a screening instrument J. L. VÁZQUEZ-BARQUERO, J. A. PADIERNA ACERO, C. PEÑA MARTÍN AND A. OCHOTECO	589
Psychiatric aspects of contempt of court among women P. T. D'ORBÁN	597
Psychiatric aspects of railway fatalities R. L. SYMONDS	609
Psychopathology and Boolean Factor Analysis: a mismatch H. O. F. VEIEL	623
Cumulated need for psychiatric service as shown in a community psychiatric project P. MUNK-JØRGENSEN	629
The construction, development and testing of a self-report questionnaire to identify social problems R. H. CORNEY AND A. W. CLARE	637
A comparison of the validity of two psychiatric screening questionnaires (GHQ-12 and SRQ-20) in Brazil, using Relative Operating Characteristic (ROC) analysis J. J. MARI AND P. WILLIAMS	651
The relevance of the multiple criterion screen to an adolescent population M. PLACE, I. KOLVIN, A. MACMILLAN AND R. NICOL	661
Medical students' attitudes towards psychiatry: a conceptual shift M. AUGOSTINOS, G. SCHRADER, R. CHYNOWETH AND M. REID	671
Case report: Severe hypoglycaemia and sudden death in anorexia nervosa P. J. RATCLIFFE AND J. S. BEVAN	679
Brief communication: Asperger's Syndrome and non-verbal communication: a pilot study D. W. SCOTT	683
Preliminary communication: Parental pressure for tonsillectomy: attitudes and knowledge of parents accompanying their children to an ear, nose and throat clinic C. G. LONG AND D. H. SMITH	689
Book reviews: <i>The History of Lithium Therapy</i> B. BLACKWELL	695

<i>Mechanisms of Alcohol Damage in utero</i> E. SPARGO	page 698
<i>Training and Education in Psychiatry</i> G. WILKINSON	700
<i>LISPcraft</i> D. J. HAND	702
Short reviews	703
Notice of meetings	713
Psychiatry in the 1880s	715

## No. 4 NOVEMBER 1985

Editorials: Effects of early nutrition on neurological and mental competence in human beings Z. STEIN AND M. SUSSER	717
The meanings of psychotherapy C. V. HALDIPUR	727
Female vulnerability to depression C. TENNANT	733
Bulimia in the late nineteenth century: the observations of Pierre Janet H. G. POPE JR, J. I. HUDSON AND J.-P. MIALET	739
The psychopathology of affectivity: conceptual and historical aspects G. E. BERRIOS	745
Three cognitive theories of depression P. BEBBINGTON	759
Dementia and depression among the elderly living in the Hobart community: the effect of the diagnostic criteria on the prevalence rates D. W. K. KAY, A. S. HENDERSON, R. SCOTT, J. WILSON, D. RICKWOOD AND D. A. GRAYSON	771
Depression among men made involuntarily redundant D. I. MELVILLE, D. HOPE, D. BENNISON AND B. BARRACLOUGH	789
Factors influencing the psychological impact of prolonged unemployment and of re-employment P. WARR AND P. JACKSON	795
Brief report on the clinical reappraisal of the Diagnostic Interview Schedule carried out at the Johns Hopkins site of the Epidemiological Catchment Area Program of the NIMH M. F. FOLSTEIN, A. J. ROMANOSKI, G. NESTADT, R. CHAHAL, A. MERCHANT, S. SHAPIRO, M. KRAMER, J. ANTHONY, E. M. GRUENBERG AND P. R. McHUGH	809
Alcohol abuse in Huntington's disease M. KING	815
Self-reported use of psychotropic drugs and alcohol abuse in South-Verona O. SICILIANI, C. BELLANTUONO, P. WILLIAMS AND M. TANSELLA	821
The use of health diaries in the field of psychiatric illness in general practice J. MURRAY	827
Measuring life events in an adolescent population: methodological issues and related findings E. MONCK AND R. DOBBS	841
Myocardial infarction on various days of the week W. MASSING AND M. C. ANGERMEYER	851
Perceptual changes in schizophrenia: a questionnaire survey O. T. PHILLIPSON AND J. P. HARRIS	859
Increasing right hand dominance with age on a motor skill task M. P. I. WELLER AND D. T. LATIMER-SAYER	867
Cerebral ventricular size in depressed subjects R. J. DOLAN, S. P. CALLOWAY AND A. H. MANN	873
Densitometric analysis of scans: important sources of artefact R. R. JACOBSON, S. W. TURNER, R. E. BALDY AND W. A. LISHMAN	879
Brief communications: Effects of withdrawal from long-term nicotine gum use R. J. WEST AND M. A. H. RUSSELL	891
Patient affiliation in major illness Y. ROFÉ, M. HOFFMAN AND I. LEWIN	895
Book reviews: <i>Artificial Intelligence and Psychiatry</i> D. M. MACKAY	897
<i>The Transfer of Care</i> J. P. LEFF	898
<i>Origins and Evolution of Behavior Disorders</i> S. WOLFF	899
<i>New Developments in Clinical Psychology</i> W. TRETOWAN	902
<i>Sex Differences in Minor Psychiatric Morbidity</i> P. JACKSON	903
Short reviews	904

Psychiatry in the 1880s	913
Index to Volume 15	915
Index of Book reviews	923

**MONOGRAPH SUPPLEMENTS**

7. Sex differences in minor psychiatric morbidity R. JENKINS
8. Handedness, language dominance and aphasia: a genetic model I. C.McMANUS

## NOTES FOR CONTRIBUTORS

**PAPERS** Papers for publication should be addressed to the Editor, Professor Michael Shepherd, Institute of Psychiatry, De Crespigny Park, Denmark Hill, London SE5 8AF. Contributors should send at least three copies of the text, tables, and figures. Copies other than the first may be xeroxed. The S.I. system should be adopted for text and figures. A short synopsis of about 50 words should be provided at the beginning of each article. Foreign quotations and phrases should be followed by a translation. If necessary, guidelines for statistical presentation may be found in: Altman, D. G., Gore, S. M., Gardner, M. J. & Pocock, S. J. (1983). Statistical guidelines for contributors to medical journals. *British Medical Journal* **286**, 1489–1493.

Submission of a paper will be held to imply that it contains original work that has not been previously published and that it is not being submitted for publication elsewhere.

In addition to longer articles, the Editor is prepared to accept preliminary and brief communications of between 1500 and 2500 words.

Manuscripts must be typewritten on one side of the paper in double-spacing with wide margins. The following information must be given on a single separate sheet: (1) title and short title for running head (not more than 100 characters); (2) authors' names, and (3) department in which work was done. Footnotes on the same sheet should list: (i) the authors' present addresses if different from departments in which work was done; (ii) name and address of the author to whom correspondence should be addressed; (iii) receipt of grants. Authors who would like a reprint address to be printed should include this on their manuscript.

**REFERENCES** (1) In the text these should follow the Harvard system – that is, name followed by date: Brown (1970). If there are more than two authors the first author's name followed by *et al.* should be used, even the first time that the reference appears. (2) The list of references should be typed in alphabetical order on a separate sheet and should appear as follows: Brown, J., Williams, E. & Wright, H. (1970). Treatment of heroin addiction. *Psychological Medicine* **1**, 134–136. Journal titles should be given in full.

Books should be cited as follows: Brown, J. (1970). *Psychiatric Research*. Smith: Glasgow.

**ILLUSTRATIONS** Only essential figures and tables should be included. *Photographs* Unmounted photographs on glossy paper should be provided. Magnification scales, if necessary, should be lettered on these. Where possible, prints should be trimmed to column width (i.e. 70 mm). *Diagrams* These will usually be reduced to 70 mm wide. Lettering should be in either Letraset or stencil, and care should be taken that lettering and symbols are of comparable size. Illustrations should not be inserted in the text, they should be marked on the back with figure numbers, title of paper, and name of author. All photographs, graphs, and diagrams should be referred to as figures and should be numbered consecutively in the text in Arabic numerals. The legends for illustrations should be typed on a separate sheet. *Tables* Tables should be numbered consecutively in the text in Arabic numerals and each typed on a separate sheet.

**PROOFS AND OFFPRINTS** Page proofs will be sent to the senior author. Corrections other than printer's errors may be charged to the author. Fifty offprints of each paper are supplied free; additional offprints are available according to a scale of charges if they are ordered when the proof is returned.

Indexed in *Current Contents*

© Cambridge University Press 1985

CAMBRIDGE UNIVERSITY PRESS

The Pitt Building, Trumpington Street, Cambridge CB2 1RP

32 East 57th Street, New York, NY 10022, USA

10 Stamford Road, Oakleigh, Melbourne 3166, Australia

Printed in Great Britain by the University Press, Cambridge

# Psychological Medicine

Volume 15 Number 4 November 1985

## CONTENTS

### EDITORIALS

- Effects of early nutrition on neurological and mental competence in human beings Z. STEIN AND M. SUSSER *page* 717
- The meanings of psychotherapy C. V. HALDIPUR 727
- Female vulnerability to depression C. C. TENNANT 733
- POPE, H. G. JR, HUDSON, J. I. AND MIALET, J.-P. Bulimia in the late nineteenth century: the observations of Pierre Janet 739
- BERRIOS, G. E. The psychopathology of affectivity: conceptual and historical aspects 745
- BEBBINGTON, P. Three cognitive theories of depression 759
- KAY, D. W. K., HENDERSON, A. S., SCOTT, R., WILSON, J., RICKWOOD, D. AND GRAYSON, D. A. Dementia and depression among the elderly living in the Hobart community: the effect of the diagnostic criteria on the prevalence rates 771
- MELVILLE, D. I., HOPE, D., BENNISON, D. AND BARRACLOUGH, B. Depression among men made involuntarily redundant 789
- WARR, P. AND JACKSON, P. Factors influencing the psychological impact of prolonged unemployment and of re-employment 795
- FOLSTEIN, M. F., ROMANOSKI, A. J., NESTADT, G., CHAHAL, R., MERCHANT, A., SHAPIRO, S., KRAMER, M., ANTHONY, J., GRUENBERG, E. M. AND MCHUGH, P. R. Brief report on the clinical reappraisal of the Diagnostic Interview Schedule carried out at the Johns Hopkins site of the Epidemiological Catchment Area Program of the NIMH 809
- KING, M. Alcohol abuse in Huntington's disease 815
- SICILIANI, O., BELLANTUONO, C., WILLIAMS, P. AND TANSELLA, M. Self-reported use of psychotropic drugs and alcohol abuse in South-Verona 821
- MURRAY, J. The use of health diaries in the field of psychiatric illness in general practice 827
- MONCK, E. AND DOBBS, R. Measuring life events in an adolescent population: methodological issues and related findings 841
- MASSING, W. AND ANGERMEYER, M. C. Myocardial infarction on various days of the week 851
- PHILLIPSON, O. T. AND HARRIS, J. P. Perceptual changes in schizophrenia: a questionnaire survey 859
- WELLER, M. P. I. AND LATIMER-SAYER, D. T. Increasing right hand dominance with age on a motor skill task 867
- DOLAN, R. J., CALLOWAY, S. P. AND MANN, A. H. Cerebral ventricular size in depressed subjects 873
- JACOBSON, R. R., TURNER, S. W., BALDY, R. E. AND LISHMAN, W. A. Densitometric analysis of scans: important sources of artefact 879
- BRIEF COMMUNICATIONS
- Effects of withdrawal from long-term nicotine gum use R. J. WEST AND M. A. H. RUSSELL 891
- Patient affiliation in major illness Y. ROFÉ, M. HOFFMAN AND I. LEWIN 895
- BOOK REVIEWS
- Artificial Intelligence and Psychiatry* D. M. MACKAY 897
- The Transfer of Care* J. P. LEFF 898
- Origins and Evolution of Behavior Disorders* S. WOLFF 899
- New Developments in Clinical Psychology* W. TRETOWAN 902
- Sex Differences in Minor Psychiatric Morbidity* P. JACKSON 903
- Short reviews 904
- PSYCHIATRY IN THE 1880s 913
- INDEX TO VOLUME 15 915
- INDEX OF BOOK REVIEWS 923