

Revision of several poorly known Antarctic aeolid nudibranch species (Mollusca: Gastropoda), with the description of a new species

ÁNGEL VALDÉS¹, AMY L. MORAN² AND H. ARTHUR WOODS³

¹Department of Biological Sciences, California State Polytechnic University, 3801 West Temple Avenue, Pomona, California 91768, USA, ²Department of Biological Sciences, Clemson University, 132 Long Hall, Clemson, South Carolina 29634, USA, ³Division of Biological Sciences, University of Montana, 32 Campus Drive, HS104, Missoula, Montana 59812, USA

Morphological examination of several specimens of aeolid nudibranchs collected from the Ross Sea, Antarctica, revealed an unexpectedly high number of species. Based on the collected material the following species are re-described and for the first time their colour, reproductive anatomy and radula are illustrated together: Eubranchus glacialis, Cuthona modesta, Cuthona crinita, Cuthona elioti and Guyvalvoria paradoxa. Additionally, a new species of Cuthona is described from this area. The new species differs from other Antarctic and sub-Antarctic species of Cuthona in its external appearance, radular morphology and reproductive anatomy. Information on the egg mass and embryonic development of several species is provided.

Keywords: taxonomy, systematics, *Eubranchus*, *Cuthona*, *Guyvalvoria*, McMurdo Sound, Ross Sea, Antarctica

Submitted 6 August 2010; accepted 20 January 2011; first published online 19 April 2011

INTRODUCTION

During the last years of the 19th Century and the beginning of the 20th Century, several European nations conducted expeditions to Antarctica with the goals of promoting international prestige and reaching the South Pole. Scientific collections from these expeditions yielded a number of aeolid nudibranchs that were described as new species in several publications. Most of these papers were expedition reports in which specimens were studied years after collection. As a consequence, these descriptions were based on preserved animals and descriptive information on the external morphology and coloration is largely lacking; thus, it is very difficult to apply these descriptions to members of the Antarctic aeolid fauna collected in the present day. All expedition reports in which new aeolid Antarctic species were described are summarized in Table 1.

After a lapse of almost 30 years, a new emphasis in Antarctic research produced a series of papers dealing with Antarctic and sub-Antarctic aeolids, including Minichev (1972), Burn (1973), Vicente (1974) and Vicente & Arnaud (1974), in which the new taxa *Notaeolidia alutacea* Minichev, 1972, *Notaeolidia flava* Minichev, 1972, *Cuthona georgiana longipapillata* Minichev, 1972, *Cuthona paucicirra* Minichev, 1972, *Cuthona critina* Minichev, 1972, *Trinchesia macquariensis* Burn, 1973 and *Cuthona claviformis* Vicente in Vicente & Arnaud, 1974 were described. Many of these

species were also described based on preserved animals and important descriptive information was lacking.

More recently, Wägele (1990), Cattaneo-Vietti (1991) and Martynov (2006) provided the first modern reviews of Antarctic aeolids. These included descriptions of living animals and morphological observations made with scanning electron microscopy. These papers focused on reviewing previously recognized species and synonymizing a handful of taxa, thus clarifying the taxonomy of the group. Two additional new species were introduced by Martynov (2006), *Guyvalvoria gruzovi* Martynov, 2006 and *Guyvalvoria savinkini* Martynov, 2006.

In the present paper we present morphological data from an assortment of Antarctic aeolids that were recently collected by divers in the Ross Sea, photographed alive, and preserved for more detailed morphological and molecular analyses. Our main objectives here are to provide comprehensive descriptions of these taxa including colour, radular morphology and reproductive anatomy that will facilitate further research on the group. We assigned them to previously described species wherever possible, and describe a single new species.

MATERIALS AND METHODS

Specimens were collected by divers on SCUBA at several locations in McMurdo Sound, Antarctica. Specimens were collected by hand, brought back to McMurdo Station alive, and kept at -1°C until photographed. Live animals were photographed with a Nikon D-70S with 105 mm macro lens in a flow-through saltwater tank, measured, and preserved immediately in 99% EtOH.

Corresponding author:

A. Valdés

Email: aavaldes@csupomona.edu

Table 1. Expedition reports in which new species of Antarctic aeolids were described, including reference, name of the expedition and new species described.

Reference	Expedition	Aeolid species
Martens & Pfeffer (1886)	South Georgia (German Station)	<i>Aeolis schraderi</i> Pfeffer in Martens & Pfeffer, 1886 <i>Aeolis antarctica</i> Pfeffer in Martens & Pfeffer, 1886 <i>Aeolis georgiana</i> Pfeffer in Martens & Pfeffer, 1886
Pelseneer (1903)	Belgium Antarctic Expedition 1897–1899	<i>Tergipes antarcticus</i> Pelseneer, 1903
Eliot (1905)	Scottish National Antarctic Expedition 1902–1904	<i>Notaeolidia gigas</i> Eliot, 1905 <i>Notaeolidia purpurea</i> Eliot, 1905
Eliot (1907a)	British National Antarctic Expedition 1901–1904 (Discovery Expedition)	<i>Notaeolidia depressa</i> Eliot, 1907 <i>Cuthonella antarctica</i> Eliot, 1907 <i>Cuthonella paradoxa</i> Eliot, 1907 <i>Cuthonella modesta</i> Eliot, 1907 <i>Galvinella antarctica</i> Eliot, 1907 <i>Cratena</i> sp.
Vayssière (1906)	French Antarctic Expedition 1903–1905	<i>Guyvalvoria francaisi</i> Vayssière, 1906
Thiele (1912)	German South Polar Expedition 1901–1903	<i>Galvinella glacialis</i> Thiele, 1912 <i>Notaeolidia rufopicta</i> Thiele, 1912
Odhner (1926)	Swedish Antarctic Expedition 1901–1903	-
Odhner (1934)	British Antarctic 'Terra Nova' Expedition 1910–1913	<i>Notaeolidia robsoni</i> Odhner, 1934 <i>Eubranchus adarensis</i> Odhner, 1934
Odhner (1944)	Norwegian Antarctic Expeditions 1927–1928	<i>Notaeolidia subgigas</i> Odhner, 1944 <i>Cuthona schraderi</i> var. <i>bouvetensis</i> Odhner, 1944

Preserved specimens were dissected by dorsal incision. The internal features were examined and drawn using a Nikon SMZ-100 dissecting microscope with a camera lucida attachment. Special attention was paid to the morphology of the reproductive and digestive systems. The buccal mass was removed and dissolved in 10% sodium hydroxide until the radula and jaws were isolated from the surrounding tissue. The radula and jaws were then rinsed in water, dried, mounted and sputter-coated for examination with a scanning electron microscope (SEM) Hitachi S-3000N at the Natural History Museum of Los Angeles County.

The material examined was deposited at the Malacology Section of the Natural History Museum of Los Angeles County (abbreviated LACM).

SYSTEMATICS

Family EUBRANCHIDAE Odhner, 1934

Eubranchus glacialis (Thiele, 1912)

(Figures 1A–B & 2–3)

Galvinella glacialis Thiele, 1912: 223–224, text figure 9, pl. 19, figure 6.

MATERIAL EXAMINED

Arrival Heights, McMurdo Sound, Ross Sea, Antarctica (77°50'14.29"S 166°37'59.14"E), 16 November 2007, 1 specimen 7 mm preserved length (LACM 176410); 1 specimen 7 mm preserved length, dissected (LACM 176411). Dayton's Wall, McMurdo Sound, Ross Sea, Antarctica (77°51'02.31"S 166°39'56.07"E), 27 November 2007, 1 specimen, 4 mm preserved length (LACM 176412).

EXTERNAL MORPHOLOGY

Background colour golden-yellow (Figure 1A). Rhinophores and oral tentacles slightly paler than the rest of the body. Cerata translucent orange with opaque white apices.

Digestive gland branches visible in the cerata as reddish-orange tubes.

Rhinophores and oral tentacles about the same length (Figure 1B). Cerata inflated, wider near the centre, narrowing towards both the base and the apex. Subapically, right where each cerata becomes white, the cerata widen slightly to narrow again towards the tip. Cerata arranged in 4 groups, the first one situated anterior to the pericardium and the rest posterior to the pericardium. Within each group, dorsal cerata tend to be larger than the more lateral ones. Reproductive opening on the right side of the body, in the middle of the first group of cerata. Anus dorsal, located behind the pericardium, slightly towards the right side of the body and anterior to the second group of cerata. Posterior end of the foot elongate with a rounded tip.

ANATOMY

Radular formula $56 \times 1.1.1$ in a 7 mm preserved length specimen. Rachidian teeth with a central cusp surrounded by 3–5 denticles on each side (Figure 2A, B). The cusp and denticles have a similar shape, but the central cusp is longer. In several teeth a small denticle is situated at the base of the central cusp, generally alternating between the left and right sides of the cusp (Figure 2A). The rachidian teeth are similar in shape and size throughout the radula. Lateral teeth plate like, with a pointy inner cusp and lacking denticles. All lateral teeth are similar in shape, but they decrease in size towards the posterior end of the radula. Jaws elongate (Figure 2C), no denticles on the masticatory border were observed.

Reproductive system with a short, wide ampulla (Figure 3). The hermaphroditic duct connects into the ampulla laterally, not distally. The ampulla connects to the female gland complex near the connection of the prostate. The prostate is a short, thin tube that expands into a large, muscular deferent duct. The distal end of the deferent duct contains the penis, which is armed with a short stylet. A long, curved prostate gland inserts on the mid-section of the deferent duct. The



Fig. 1. Photographs of living animals: (A) *Eubranchus glacialis* (Thiele, 1912) (LACM 176411), dorsal view; (B) *Eubranchus glacialis* (Thiele, 1912) (LACM 176411), frontal view; (C) *Guyvalvoria paradoxa* (Eliot, 1907) (LACM 176424) frontal view; (D) *Guyvalvoria paradoxa* (Eliot, 1907) (LACM 176424) dorsal view; (E) *Cuthona elioti* (Odhner, 1944) (LACM 176420), lateral view; (F) *Cuthona crinita* Minichev, 1972 (LACM 176422), dorsal view; (G) *Cuthona modesta* (Eliot, 1907) (LACM 176414), dorsal view; (H) *Cuthona giarannae* sp. nov., dorsal view. Photographs by C. Shields and L. Mullen (A, B, C, D, G & H); B. Miller (E); and Jonathan Sprague (F).

vagina is long and convoluted and connects directly into a very elongate bursa copulatrix.

REMARKS

Several species of Eubranchidae were described from Antarctic and sub-Antarctic waters. Most of these descriptions were based on preserved specimens and are therefore difficult to evaluate. Odhner (1934) discussed these species and provided elements to distinguish them based on the radular teeth morphology. For example, the species *Eubranchus fuegiensis* Odhner, 1926 (from Argentina, Tierra del Fuego), *Galvinella antarctica* Eliot, 1907 (from Winter Quarters Bay, McMurdo Sound, Antarctica) and *Galvinella glacialis* Thiele, 1912 (from the Gauss-Station, Davis Sea, Antarctica), all were described as having lateral teeth much

broader than the rachidian, whereas *Eubranchus adariensis* Odhner, 1934 and *Eubranchus falklandicus* Eliot, 1907 had lateral teeth equal or narrower than the rachidian.

The specimens here examined show lateral teeth much broader than the rachidian and therefore fall within the first group. *Galvinella antarctica* is a peculiar species with the cerata very narrow mid-length and wider near the apex and the base. Eliot (1907a) erected the genus name *Galvinella* for this species because of the unique shape of the cerata and the pointed anterior corners of the foot. Since its original description by Eliot (1907a), this species has not been collected again and it is not clear whether the peculiar ceratal morphology was a true species characteristic or an artefact of preservation.

The second species of *Galvinella*, *G. glacialis*, was described by Thiele (1912) as having a brownish-grey colour with the

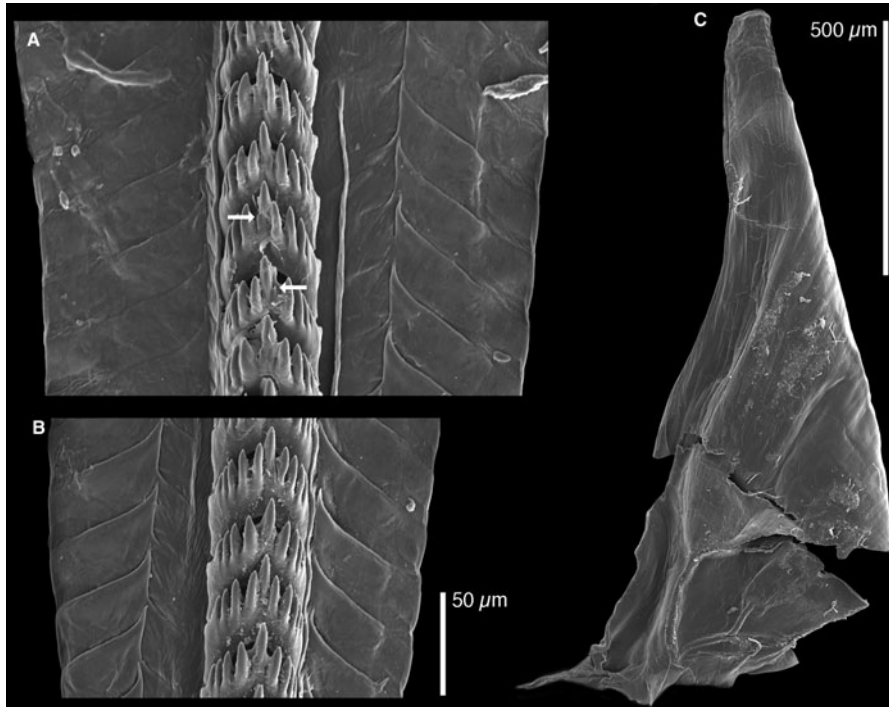


Fig. 2. *Eubranchus glacialis* (Thiele, 1912) LACM 176411, scanning electron microscopy photographs of the radula and jaws. (A) Anterior radular teeth, arrows indicate alternating small denticles at the base of the central cusp; (B) posterior radular teeth; (C) jaw.

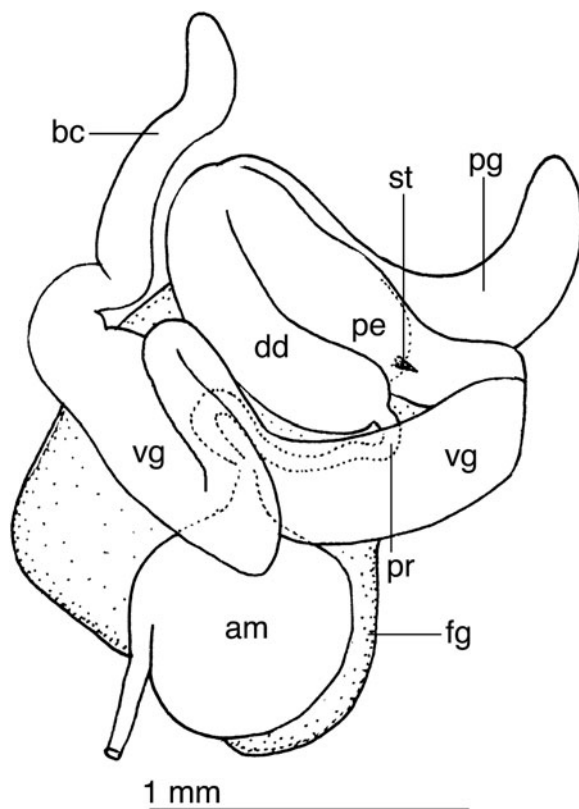


Fig. 3. *Eubranchus glacialis* (Thiele, 1912) reproductive system of LACM 176411. am, ampulla; bc, bursa copulatrix; dd, deferent duct; fg, female gland complex; pe, penis; pg, penial gland; pr, prostate; st, stylet; vg, vagina.

apices of the cerata white. The anus was located dorsally on the centre right of the animal. The radular morphology, with a rachidian tooth having several large denticles and very elongate lateral teeth is consistent with the specimens here examined. Thiele (1912) assigned this species to *Galvinella* because of the conical shape of the cerata with rounded apices, but in the original description the cerata appeared to be club-shaped, very different from the drawings by Eliot (1907a). All external and anatomical characteristics of *G. glacialis* are consistent with those of the specimens here examined, and therefore we assign them to this species. Miller (1971) stated that *Galvinella* was most likely a synonym of *Eubranchus*, and this opinion is now generally accepted. Examination of the type species of *Galvinella* (*G. antarctica*) and comparison to species of *Eubranchus* is necessary to confirm this synonymy.

Family TERGIPEDIDAE Bergh, 1889

Cuthona modesta (Eliot, 1907)

(Figures 1G & 4–5)

Cuthonella modesta Eliot, 1907a: 25.

?*Cuthona georgiana* (Pfeffer in Martens & Pfeffer, 1886): Cattaneo-Vietti, 1991: 224–228, figure 2.

MATERIAL EXAMINED

Dayton's Wall, McMurdo Sound, Ross Sea, Antarctica (77°51'02.31"S 166°39'56.07"E), 26 October 2007, 1 specimen, 8 mm preserved length (LACM 176413). Cape Evans Wall, McMurdo Sound, Ross Sea, Antarctica (77°38.413'S 166°31.120'E), 31 October 2007, 1 specimen 6 mm preserved length, dissected (LACM 176414). Intake Jetty, McMurdo Sound, Ross Sea, Antarctica (77°51'02.31"S 166°39'56.07"E), 15 November 2007, 1 specimen 8 mm preserved length,

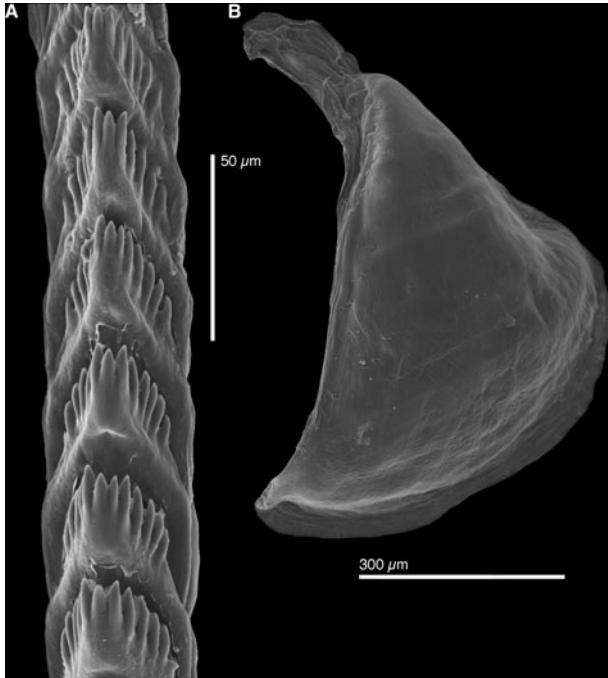


Fig. 4. *Cuthona modesta* (Eliot, 1907) LACM 176416, scanning electron microscopy photographs of the radula and jaws: (A) radular teeth; (B) jaw.

dissected (LACM 176415), 2 December 2007, 1 specimen 18 mm preserved length, dissected (LACM 176416).

EXTERNAL MORPHOLOGY

Background colour translucent grey, with the digestive and reproductive organs visible as an orange-grey mass (Figure 1G). Rhinophores and oral tentacles translucent grey

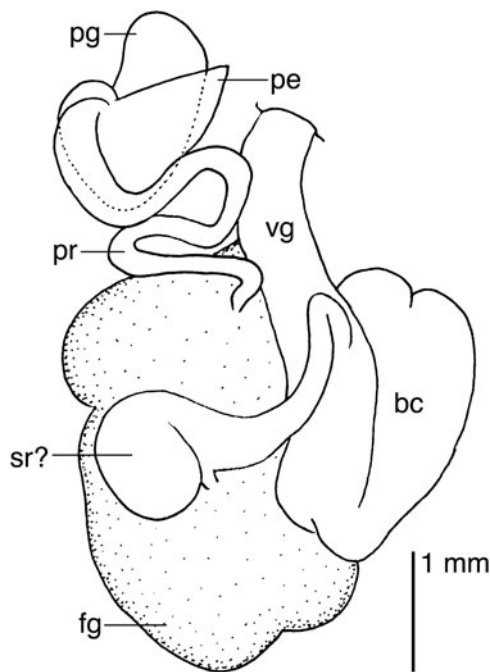


Fig. 5. *Cuthona modesta* (Eliot, 1907) reproductive system of LACM 176416. bc, bursa copulatrix; dd, deferent duct; fg, female gland complex; pe, penis; pg, penial gland; pr, prostate; sr, possible seminal receptacle; vg, vagina.

with opaque white pigment on the distal half. Cerata translucent with opaque white apices. Digestive gland branches visible in the cerata as reddish-orange tubes.

Body relatively short and wide. Anterior end of the foot with two conspicuous, triangular foot corners. Rhinophores smooth, about 4 times as long as the oral tentacles. Cerata inflated, wider subapically, narrowing towards both the base and the apex. Cerata arranged in 8 rows, the first 4 situated anterior to the pericardium and the rest posterior to the pericardium. Within each group, dorsal cerata tend to be larger than lateral cerata. Reproductive opening on the right side of the body, behind the 3rd row of cerata. Anus latero-dorsal, located behind the pericardium, anterior to the 5th row of cerata. Posterior end of the foot elongate with a rounded tip.

ANATOMY

Radular formula $33 \times 0.1.0$ in a 7 mm preserved length specimen. Radular teeth narrow and elongate, with the region bearing denticles much narrower than the rest of the tooth (Figure 4A). Central cusp short and wide, shorter than the lateral denticles, with the distal end lower than that of the innermost denticles. Lateral denticles ranging from 5 to 6, comparatively short and wide (Figure 4A). Innermost lateral denticles juxtaposed, but outermost separated by small gaps. Jaws elongate (Figure 4B), with no observable denticles on the masticatory border.

Reproductive system (Figure 5) lacking a visibly differentiated ampulla. The hermaphroditic duct inserts directly into the female gland complex, which indicates that the ampulla is possibly embedded in the female gland tissue. The prostate emerges from the female gland mass and consists of a thin convoluted tube that opens directly into the short, conical penis. A short penial gland connects next to the connection between the deferent duct and the penis. The vagina is very long and wide and expands into a poorly defined, irregular bursa copulatrix. From the vagina a narrow, long duct emerges and appears to expand into a seminal receptacle and the female gland complex. These organs and connections are not well defined and with the material available it was not possible to identify them precisely.

REMARKS

Cuthonella modesta Eliot, 1907 (type locality: Hut Point, Winter Quarters Bay, Ross Sea) was described based on a single specimen 3.2 mm preserved length. Eliot (1907a) described the living animal as uniform greenish-yellow, with stout, inflated cerata, a broad foot with a thick anterior margin with short lateral projections, and the genital opening situated right behind the rhinophores. All these characteristics were present in the material here examined. More importantly, the radular teeth of *C. modesta* were described as horseshoe shaped with a low, shorter than the lateral denticles cusp, which was also very similar to the radular teeth of our specimens. The only difference between the material here examined and the original description of *C. modesta* is the presence of white pigment on the tips of the cerata, rhinophores and oral tentacles in our specimens. Eliot (1907a) never examined the live holotype and his description of colour was based on notes from collectors, who may have not described the specimens in detail.

The remarkable similarities in the external and anatomical features of *C. modesta* and the material here examined, as well

as the fact that they were collected within 1 km of each other, provides support for the identification of our specimens.

The reproductive anatomy of the specimens of *C. modesta* examined here is unusual, however some of the organs could not be identified with certainty and this description should be regarded as tentative.

Specimens reported by Cattaneo-Vietti (1991) as *Cuthona georgiana* (Pfeffer in Martens & Pfeffer, 1886) and collected from Terra Nova Bay (Ross Sea) probably belong to the same species. The detailed external and anatomical descriptions by Cattaneo-Vietti (1991) coincide in great detail with our observations. A photograph of a live animal made available by Cattaneo-Vietti (personal communication) showed an animal very similar to the specimens here examined. The only substantial difference is the shape of the radular teeth that in Cattaneo-Vietti's (1991: figure 2C) drawing appear shorter than in our specimens and the central cusp is just slightly longer than the lateral denticles. A scanning electron micrograph of the radula provided by Cattaneo-Vietti (personal communication) confirmed these differences.

Odhner (1944) transferred *C. modesta* to *Cuthona*, along with two other Antarctic species, *C. antarctica* and *C. paradoxa*. Odhner (1944) argued that these three species have their cerata arranged in simple rows whereas *Cuthonella* (type species *Cuthonella abyssicola* Bergh, 1884) is characterized by having branches of the digestive gland with ceratal branches multiplying laterally. Our examinations of *C. modesta* and *C. elioti* (= *C. antarctica*) confirm that the

anatomical characteristics of these two species are consistent with the diagnoses of *Cuthona* provided by Miller (1977) and Williams & Gosliner (1979).

Cuthona elioti (Odhner, 1944)
(Figures 1E & 6–8)

Cuthonella antarctica Eliot, 1907a: 23–24, text figures 25–26 (non-*Aeolis antarctica* Pfeffer in Martens & Pfeffer, 1886)

Cuthona elioti Odhner, 1944: 22 (replacement name for *Cuthonella antarctica* Eliot, 1907).

MATERIAL EXAMINED

Dayton's Wall, McMurdo Sound, Ross Sea, Antarctica (77°51'02.31"S 166°39'56.07"E), 26 October 2007, 1 specimen 3 mm preserved length (LACM 176417). Sewage outfall, McMurdo Sound, Ross Sea, Antarctica (77°51'31.95"S 166°40'47.51"E), 5 November 2007, 1 specimen 5 mm preserved length, dissected (LACM 176418). Cape Evans Wall, McMurdo Sound, Ross Sea, Antarctica (77°38.413'S 166°31.120'E), 22 November 2007, 1 specimen 6 mm preserved length, dissected (LACM 176419), 22 November 2007, 1 specimen 3 mm preserved length, dissected (LACM 176420).

EXTERNAL MORPHOLOGY

Colour uniformly translucent white with the digestive system visible as an orange-yellow mass (Figure 1E). Branches of the

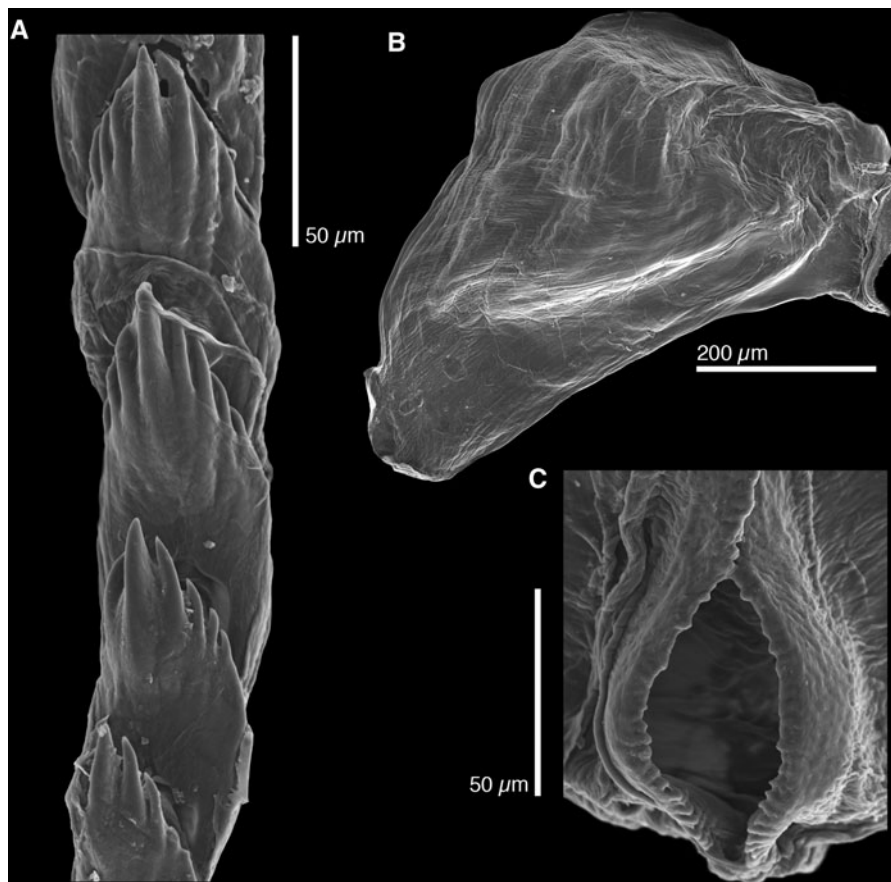


Fig. 6. *Cuthona elioti* (Odhner, 1944) LACM 176419, scanning electron microscopy photographs of the radula and jaws: (A) radular teeth; (B) jaw; (C) masticatory borders of both jaws.

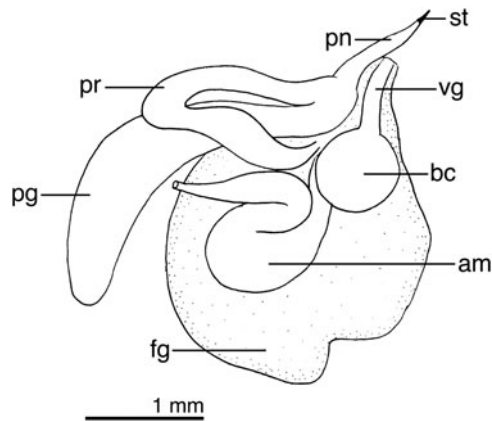


Fig. 7. *Cuthona elioti* (Odhner, 1944) reproductive system of LACM 176419. am, ampulla; bc, bursa copulatrix; dd, deferent duct; fg, female gland complex; pe, penis; pg, penial gland; pr, prostate; st, penial stylet; vg, vagina.

digestive system visible in the cerata, also orange-yellow, with the large cnidosacs opaque white. Dorsum, rhinophores and cerata covered with numerous tiny opaque white-bluish dots, more densely arranged near the apices of the cerata and on the head area in front of the rhinophores. Reddish-brown pigment present subapically on the cerata.

Body narrow, with relatively high profile. Anterior border of the foot rounded with no lateral projections. Rhinophores smooth, about 3–4 times as long as the oral tentacles. Cerata elongate and narrow, wider near the base. Cerata arranged in 7 rows, the two most posterior rows having the largest number of cerata. Reproductive opening situated right behind the second row of cerata. Anus opening between the fourth and fifth row, below the posterior end of the pericardium.

INTERNAL ANATOMY

Radular formula $14 \times 0.1.0$. Radular teeth narrow and elongate, with a pointy, sharp central cusp, and 3–4 narrow

and pointy lateral denticles on each side of the cusp (Figure 6A). Lateral denticles not juxtaposed, but separated by small gaps. Innermost lateral denticles reaching almost the same height as the central cusp. Jaws elongate (Figure 6B), with a masticatory border bearing two rows of 13 well-defined denticles (Figure 6C), followed by an area with an undetermined number of irregular, worn-out teeth.

Reproductive system with a large ampulla folded twice (Figure 7), connecting with the female gland complex. Prostate short, tubular, emerging from the female glands and connecting with a short, conical penis and a long accessory penial gland. Penis with a short cuticular stylet. Vagina short, straight, connecting with a small, rounded bursa copulatrix.

BIOLOGY

The egg masses of *Cuthona elioti* are small (2.5–3 mm \times 3–4 mm), white, thin, and sheet-like, and were attached along one long edge to bushy hydroids and loosely coiled into an upright barrel shape (Figure 8A). The sheets are 1–2 embryos thick and embryos are contained in individual capsules (Figure 8B). In most masses collected in October–December, embryos were at the veliger stage and had well developed vela and feet; embryos ranged in size from 250 to 340 μ m in total length from velum to shell apex (Figure 8B). None contained veligers that appeared to be close to metamorphosis; combined with the large vela and small yolk volume of the embryos, suggesting that this species may have planktonic development. Masses were often clustered together on hydroids and adults were generally found nearby (Figure 8C). Egg masses were identified to species by COI sequence data, which were identical to adult *Cuthona elioti* (Shields *et al.*, submitted).

REMARKS

Cuthonella antarctica Eliot, 1907 (type locality: Winter Quarters Bay, Ross Sea) was originally described as a uniformly yellowish-brown, fairly stout animal (Eliot, 1907a). The cerata of the preserved animals were described as irregular, the anterior end of the foot as rounded without traces of

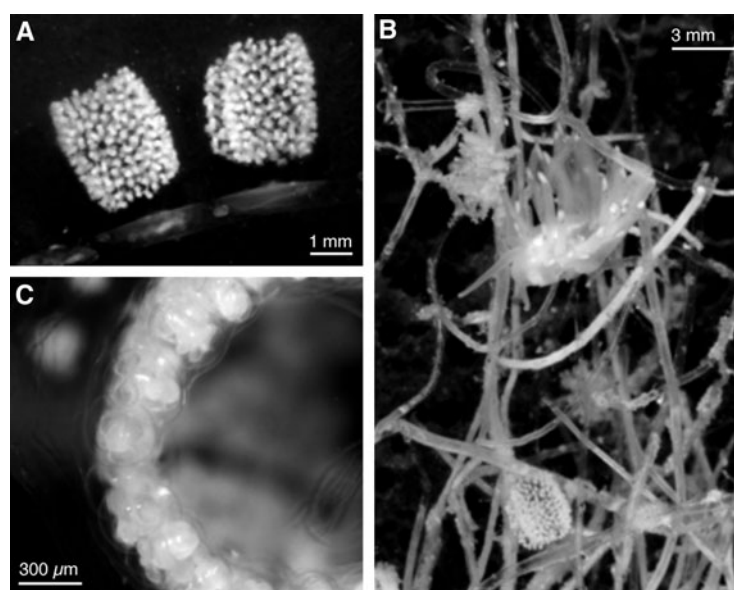


Fig. 8. Egg masses and embryos of *Cuthona elioti*. (A) Two field-collected masses attached to a bushy hydroid; (B) close-up view of embryos in a mass, taken along the long edge of the coiled ribbon (the top of the mass as pictured in A); (C) hydroids collected at Dayton's Wall, McMurdo Sound, containing a mass and adult of *C. elioti*. Photographs by B. Miller.

foot corners, and the rhinophores as much longer than the oral tentacles. One of the most distinctive characteristics of this species is the radular teeth, with sharp denticles, the outermost ones curved inwards. All these characteristics are very similar to those of the specimens here examined, which are therefore assigned to this species.

Odhner (1944) considered that Eliot's species *C. antarctica*, *C. modesta* and *C. paradoxa* belong to the genus *Cuthona*. With this action, Odhner (1944) made *Cuthonella antarctica* Eliot, 1907 a secondary homonym of *Aeolis antarctica* Pfeffer in Martens & Pfeffer, 1886 (ICZN, 1999: Article 57.3), which was transferred to *Cuthona* by Odhner (1926). Thus, Odhner (1944) proposed the new name *Cuthona elioti* for *Cuthonella antarctica* Eliot, 1907.

Our specimens assigned to *C. elioti* are characterized by having a penial stylet. In his review of the anatomical characteristics of Antarctic Tergipedidae, Cattaneo-Vietti (1991) indicated that only two Antarctic species possess a penial stylet, *Cuthona macquariensis* (Burn, 1973) from Macquarie Island and *Tergipes valentini* (Eliot, 1907) from the Falkland Islands. These two species are easily distinguishable from *C. elioti* in several regards. *Tergipes valentini* is a species with just a few cerata, and an orange background colour with the viscera visible as a dark brown area (including the ceratal branches). Additionally, the apices of the rhinophores, oral tentacles and cerata are opaque white (Eliot, 1907b). This is very different from the uniformly translucent white colour of *C. elioti* with small bluish-white dots. The radular teeth of *Tergipes valentini* contain numerous lateral denticles (7–9), versus just a few (3–4) in *C. elioti*. *Cuthona macquariensis* is a pink species with radular teeth very different from those of *C. elioti*. The rachidian teeth of *Cuthona macquariensis* have a large central cusp with 7 small denticles on each side, whereas *C. elioti* has a narrow, sharp cusp with 3–4 narrow and pointy lateral denticles, curved inward.

Other Antarctic species of Tergipedidae with a reduced number of denticles on the radular teeth include *Cuthona georgiana longipapillata* Minichev, 1972, *Cuthona paucicirra* Minichev, 1972, *Cuthona claviformis* Vicente in Vicente & Arnaud, 1974 and *Tergipes antarcticus* Pelseneer, 1903. The radular teeth of all these other species are very different from those of *Cuthona elioti*. For example, *Cuthona georgiana longipapillata* has radular teeth much shorter than those of *Cuthona elioti*, and the teeth have very short lateral denticles with the central cusp reaching much more distally than the longest of the lateral denticles. In contrast in *Cuthona elioti* the apices of the innermost lateral teeth reach almost the same distance from the base as the central cusp. *Cuthona paucicirra* has an extremely elongate, almost triangular central cusp, and the radular teeth are wider than longer, very different from the elongate and narrow teeth of *Cuthona elioti*. *Cuthona claviformis* also has broad teeth with very short and broad denticles and central cusps. Finally *Tergipes antarcticus*, recently reviewed by Kiko *et al.* (2008) is a very different species with just a few short cerata adapted to live on sea ice.

Cuthona crinita Minichev, 1972
(Figures 1F & 9–11)

?*Cuthona schraderi* var. *bouvetensis* Odhner, 1944: 27–29, pl. 1, figure 6, text figures 23, 26, 28, 30–32.

Cuthona crinita Minichev, 1972: 378–380, figure 10.

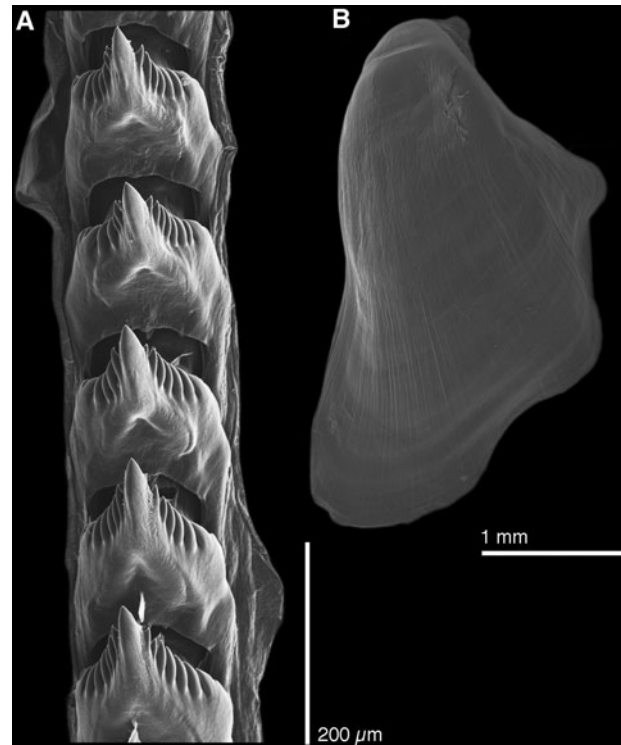


Fig. 9. *Cuthona crinita* Minichev, 1972 LACM 176421, scanning electron microscopy photographs of the radula and jaws: (A) radular teeth; (B) jaw.

MATERIAL EXAMINED

Arrival Heights, McMurdo Sound, Ross Sea, Antarctica (77°50'14.29"S 166°37'59.14"E), 3 November 2006, 1 specimen 24 mm preserved length, dissected (LACM 176421), 1 specimen 19 mm preserved length, dissected (LACM 176422).

EXTERNAL MORPHOLOGY

Background colour opaque light grey, with the digestive and reproductive organs barely visible (Figure 1F). The buccal

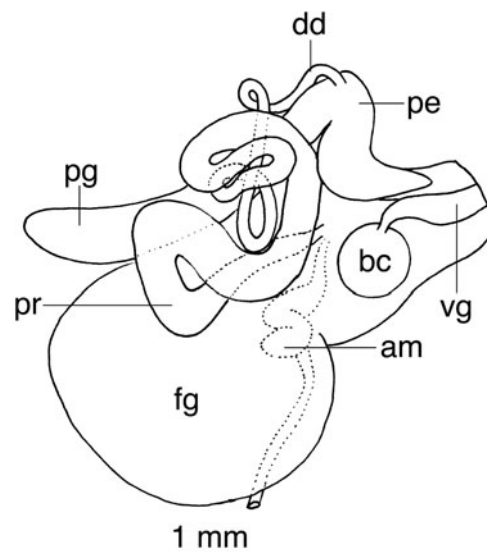


Fig. 10. *Cuthona crinita* Minichev, 1972, reproductive system of LACM 176421. am, ampulla; bc, bursa copulatrix; dd, deferent duct; fg, female gland complex; pe, penis; pg, penial gland; pr, prostate; vg, vagina.

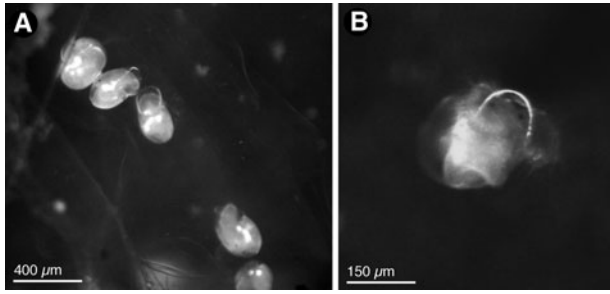


Fig. 11. Egg mass of *Cuthona crinita*. (A) Gel ribbon with larvae that had hatched from their capsules. Larvae had well-developed propodia and were crawling; (B) hatched larva of *Cuthona crinita*, swimming.

mass is partially visible as a pinkish tinge in the head. Rhinophores and oral tentacles light grey completely covered with densely arranged small opaque white spots. Cerata semi-translucent with the apical 1/3 covered with densely arranged small opaque white spots. Digestive gland branches visible in the cerata as irregular greyish-brown tubes.

Body broad, flattened dorso-ventrally. Rhinophores smooth, slightly longer and broader than the oral tentacles. Cerata narrow, elongate, wider near the base. Cerata arranged in 10 rows, 3 anterior to the genital opening, 3 situated between the genital opening and the posterior end of the pericardium, and the rest posterior to the pericardium. Within each row, dorsal cerata are much longer than the more lateral ones. Reproductive opening on the right side of the body, posterior to the third row of cerata. Anus latero-dorsal, located posterior to the fifth row of cerata. Posterior end of the foot short with a rounded tip.

ANATOMY

Radular formula $29 \times 0.1.0$ in a 25 mm preserved (contracted) length specimen. Radular teeth broad and elongate (Figure 9A). Central cusp sharp and wide, much longer than the lateral denticles. On each side of the cusp there are 6–8 sharp lateral denticles, the innermost ones merged with the basal sides of the cusp. Jaws elongate (Figure 9B), with no observable denticles on the masticatory border.

Reproductive system (Figure 10) with a small, convoluted ampulla that connects into the female gland complex. The prostate emerges from the female gland mass and consists of a broad convoluted tube that narrows into a long deferent duct and finally opens into the short, conical penis. A long penial gland connects next to the connection between the deferent duct and the penis. The vagina is short and expands into a spherical bursa copulatrix.

BIOLOGY

Only one mass of this common species was collected (in November) and the mass was at a very late stage of development (most of the embryos had hatched), suggesting this species spawns earlier in the year. Most of the mass had disintegrated but overall it appeared to be a long string, approximately 1.5 mm in diameter, strung over several filamentous hydroids with embryos contained singly in capsules in a tube inside the mass. Remaining embryos had large propodia, shells 340–450 μm in length, eyespots, and small vela (Figure 11). Most had already hatched from their capsules and were using their propodia to crawl in the gel. Once larvae were released in the laboratory, they were strong

swimmers (Figure 11). The swimming ability of *Cuthona crinita* larvae suggests this species likely has a planktonic larval period though the small size of the vela indicates the duration of larval swimming may be short.

REMARKS

Cuthona crinita Minichev, 1972 was originally described by Minichev (1972) based on preserved specimens collected from Mabus Point and Cape Khmara, Queen Mary Land, Antarctica. The preserved animals were large, up to 45 mm long, and described as colourless with a yellow tinge on the tips of the cerata. The identification of the specimens here studied as *C. crinita* is based on a comparison to the original description of this species by Minichev (1972). The reproductive system of the material examined has a short ampulla, a long, wide prostate narrowing into an also very long and narrow deferent duct, a short, conical penis, and a very long penial gland. All these elements are also present in the drawings of the reproductive system of *C. crinita* by Minichev (1972: fig. 10d) and not present in any other Antarctic species of *Cuthona* for which we have information about reproductive anatomy.

The radula of Minichev's (1972) specimens is also very similar to that of the animals here examined. The radular teeth of our specimens are broad and robust, with a sharp and wide central cusp, much longer than the lateral denticles. On each side of the cusp there are 6–8 sharp lateral denticles, the innermost ones merged with the basal sides of the cusp. This is very similar to the Minichev's (1972: figure 10g) drawings of the radula of *C. crinita*.

Another similar taxon that could constitute a synonym is *Cuthona schraderi* var. *bouvetensis* Odhner, 1944 described based on a single specimen dredged in 200 m depth at Bouvet Island (Odhner, 1944). Odhner (1944) indicated that the colour of the preserved animal was translucent and therefore different from the pale yellow original specimens of *C. schraderi*. The morphology of the reproductive system described by Odhner (1944: fig. 32) for *C. schraderi* var. *bouvetensis* is very similar to that of the material here examined. Both have a prostate that consists of a broad convoluted tube that narrows into a long deferent duct, which opens into the penis close to where the long penial gland connects. Also both have a short vagina that expands into a spherical bursa copulatrix. However, the penis of *C. schraderi* var. *bouvetensis* is much longer than that of *C. crinita* and the specimens here examined. Another difference is that the radular teeth of *C. schraderi* var. *bouvetensis* (Odhner, 1944: figure 30) are slightly narrower and have fewer lateral denticles than those of *C. crinita* and our specimens.

This is the second confirmed record of this species, and an expansion of the known range from Queen Mary Land into the Ross Sea. Some online photographs of nudibranchs found in the Antarctic Peninsula and identified as *Notaeolidia gigas* probably belong to this species (see Brueggeman, 1998).

Cuthona giarannae sp. nov.
(Figures 1H & 12–13)

TYPE MATERIAL

Holotype: sewage outfall, McMurdo Sound, Ross Sea, Antarctica ($77^{\circ}51'31.95''\text{S}$ $166^{\circ}40'47.51''\text{E}$), 5 November 2007, 4 mm preserved length (LACM 3122).

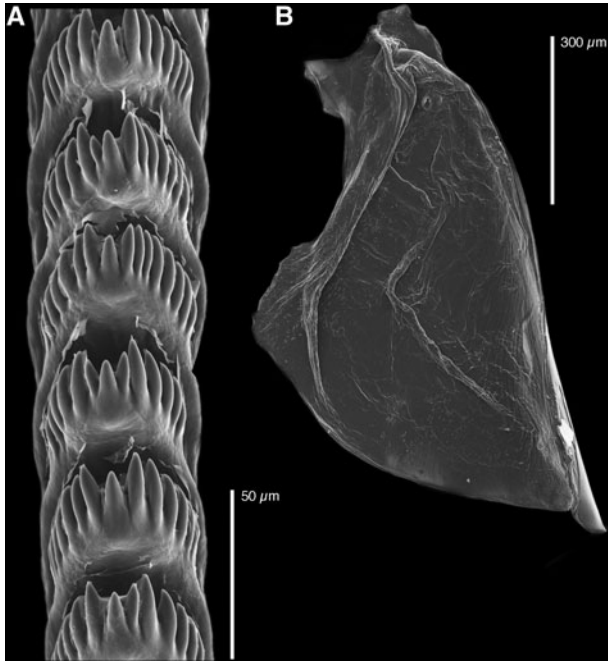


Fig. 12. *Cuthona giarannae* sp. nov. LACM 3123, scanning electron microscopy photographs of the radula and jaws: (A) radular teeth; (B) jaw.

Paratypes: Arrival Heights, McMurdo Sound, Ross Sea, Antarctica ($77^{\circ}50'14.29''\text{S}$ $166^{\circ}37'59.14''\text{E}$), 3 November 2006, 1 specimen 8 mm preserved length, dissected (LACM 3123). Sewage outfall, McMurdo Sound, Ross Sea, Antarctica ($77^{\circ}51'31.95''\text{S}$ $166^{\circ}40'47.51''\text{E}$), 5 November 2007, 1 specimen 8 mm preserved length, dissected (LACM 3124).

EXTERNAL MORPHOLOGY

Background colour translucent grey, with the digestive and reproductive organs visible as an opaque light grey mass (Figure 1H). Rhinophores and oral tentacles translucent grey completely covered with densely arranged small opaque

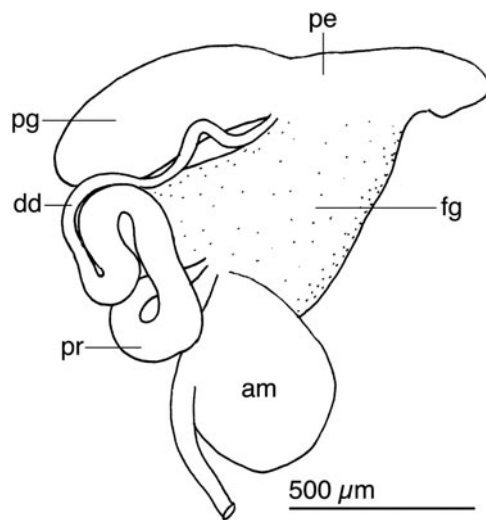


Fig. 13. *Cuthona giarannae* sp. nov. reproductive system of LACM 3124. am, ampulla; dd, deferent duct; fg, female gland complex; pe, penis; pg, penial gland; pr, prostate.

white spots. Cerata translucent with opaque white apices. Digestive gland branches visible in the cerata as irregular greyish-brown tubes.

Body narrow and elongate. Foot broad with two small triangular corners on the anterior end. Rhinophores smooth, about twice as long as the oral tentacles and much wider. Cerata narrow, elongate, about the same width throughout. Cerata arranged in 7 rows, with 2–5 cerata each. The first two rows situated anterior to the pericardium and the rest posterior to the pericardium. Within each row, dorsal cerata tend to be larger than the more lateral ones. Reproductive opening on the right side of the body, below the second row of cerata. Anus latero-dorsal, located behind the pericardium, anterior to the third row of cerata.

ANATOMY

Radular formula $25 \times 0.1.0$ in a 5 mm preserved length specimen. Radular teeth narrow and elongate (Figure 12A). Central cusp generally shorter than the lateral denticles. Lateral denticles ranging from 6 to 8, relatively short and wide. In some teeth the two innermost lateral denticles are shorter than the central cusp. Jaws elongate (Figure 12B), with no observable denticles on the masticatory border.

Reproductive system (Figure 13) with a broad, short ampulla that connects into the female gland complex. The prostate emerges from the female gland mass and consists of a convoluted tube that narrows into a narrow deferent duct and finally opens into the elongate penis. A penial gland connects next to the connection between the deferent duct and the penis. There is no evidence of a vagina or bursa copulatrix.

ETYMOLOGY

This new species is named after Giar-Ann Kung, the SEM technician at the LACM, whose help was instrumental in the production of the scanning electron micrographs published in this and other papers.

REMARKS

Cuthona giarannae appears distinct from other Antarctic and sub-Antarctic species previously described and is therefore described herein as a new species.

The closest species in external appearance is *Cuthona crinita*, which also has a general whitish coloration with brownish-grey digestive branches in the cerata. These two species are easily distinguished because *C. crinita* is a much larger animal with relatively shorter rhinophores. Anatomically, *C. crinita* has broad and robust radular teeth with a sharp and wide central cusp, much longer than the lateral denticles. In contrast, the radular teeth of *C. giarannae* are narrow and elongate, with the central cusp generally shorter than the lateral denticles. The reproductive anatomy is also different, *C. crinita* having a much longer penial gland, more elongate prostate and a visible bursa copulatrix. However, the fact that a bursa copulatrix was not observed in *C. giarannae* could be due to the small size of the specimens examined. In addition to morphological differences, *C. crinita* and *C. giarannae* are genetically distinct (Shields *et al.*, submitted).

The morphological characteristics of other Antarctic and sub-Antarctic species of *Cuthona* were summarized by Cattaneo-Vietti (1991). As mentioned throughout this paper, most species were described based on preserved

specimens with limited anatomical information and therefore are very difficult to identify. Other species originally described from the Ross Sea (*Cuthona modesta*, *C. elioti* and *C. paradoxa*) are all re-described in this study, and all show significant differences from *C. giarannae*. Only *C. modesta* has similar radular morphology, with the central cusp shorter than the lateral denticles; however, the teeth of *C. giarannae* are much broader apically. In addition, these two species are very different externally. *Cuthona modesta* is a translucent species with opaque white pigment on the apices of the rhinophores and oral tentacles and the cerata have reddish-orange branches of the digestive glands. In contrast, *C. giarannae* has white pigment all over the rhinophores and oral tentacles and the digestive branches are greyish-brown.

Of all Antarctic and sub-Antarctic species of *Cuthona*, *C. georgiana* appears to have the widest geographical range. This species was originally described from South Georgia as *Aeolis georgiana* (Pfeffer in Martens & Pfeffer, 1886), based on 12 preserved specimens, the largest being 5 mm long. The original description contains limited information on the external morphology of this species. Subsequently, Odhner (1926, 1944) re-described this species based on the type material and transferred it to the genus *Cuthona*. Odhner (1926) illustrated the radula and Odhner (1944) described the reproductive system of this species. These descriptions and illustrations confirm that *C. georgiana* is different from other species here described. The main differences between *C. georgiana* and *C. giarannae* are in the radular morphology (*C. georgiana* has a conspicuous central cusp longer than the lateral denticles) and the reproductive anatomy (*C. georgiana* has a distinct bursa copulatrix and a very large penial gland). Marcus (1959) described one additional specimen of

C. georgiana collected from Southern Chile. The preserved animal is anatomically different from the specimens studied by Odhner (1926, 1944) and the specimens here examined. In the Marcus (1959) specimen the radular teeth has lateral denticles arranged at the same level as the central cusp, although the central cusp is longer, whereas in Odhner's description only the innermost lateral denticles are at the same level as the central cusp, the rest being lower in the teeth. Also, the penial gland of the Marcus specimens appears to be comparatively smaller than that in Odhner's specimens. Finally, Cattaneo-Vietti (1991) cited *C. georgiana* for the first time from continental Antarctica and illustrated the radula and described the external morphology of live animals. Cattaneo-Vietti (1991) also considered *Cratena exigua* Thiele, 1912 to be a synonym. As mentioned above, we consider Cattaneo-Vietti's (1991) record to be *C. modesta*.

Guyvalvoria paradoxa (Eliot, 1907)
(Figures 1C–D & 14–17)

?*Aeolis schraderi* Pfeffer in Martens & Pfeffer, 1886, p. 110–111, pl. 3, figure 7.

?*Cuthona schraderi* (Pfeffer in Martens & Pfeffer, 1886): Odhner, 1926: 27–28, text figures 17–19.

Cuthonella paradoxa Eliot, 1907a: 24–25, text figure 27.

MATERIAL EXAMINED

Dayton's Wall, McMurdo Sound, Ross Sea, Antarctica (77°51'02.31"S 166°39'56.07"E), 28 November 2007, 1 specimen, 17 mm preserved length, dissected (LACM 176423),

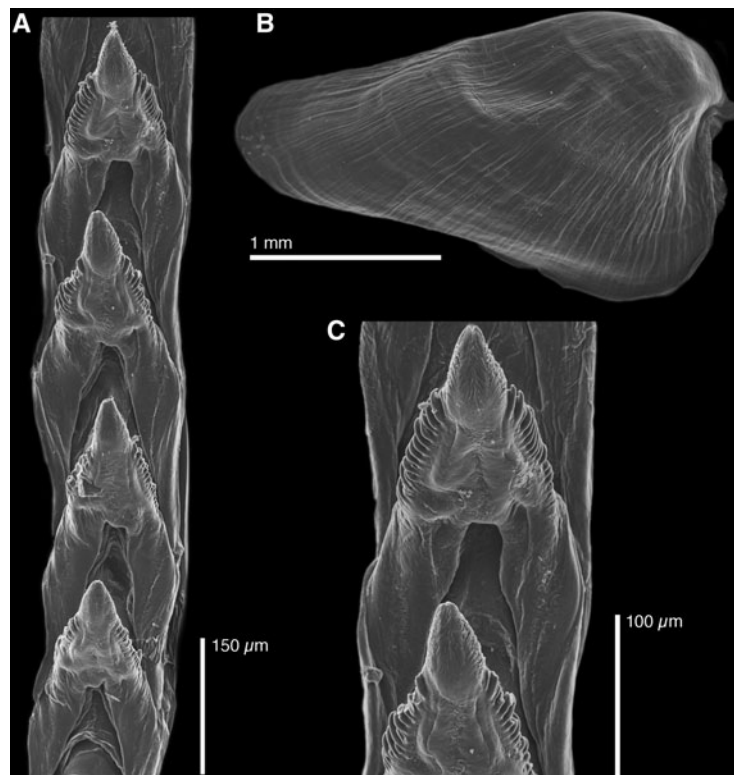


Fig. 14. *Guyvalvoria paradoxa* (Eliot, 1907) LACM 176423, scanning electron microscopy photographs of the radula and jaws: (A) radular teeth; (B) jaw; (C) detail of some radular teeth.

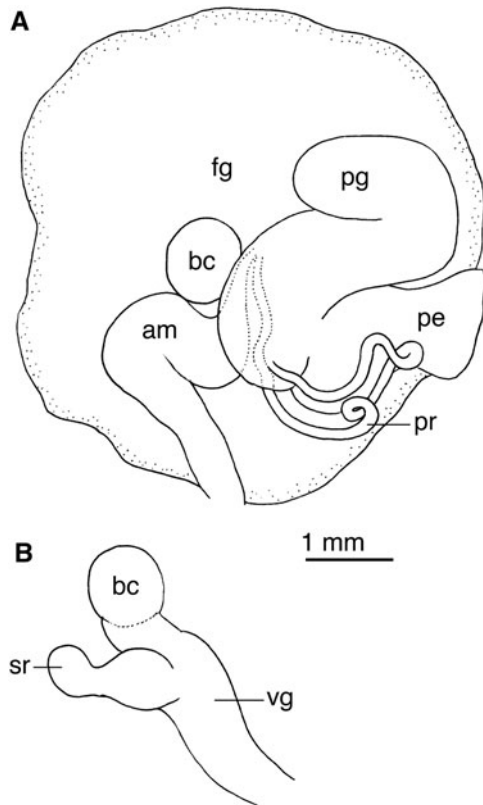


Fig. 15. *Guyvalvoria paradoxa* (Eliot, 1907) reproductive system of LACM 176423: (A) reproductive system; (B) detail of the bursa copulatrix, seminal receptacle and vagina connections. am, ampulla; bc, bursa copulatrix; dd, deferent duct; fg, female gland complex; pe, penis; pg, penial gland; pr, prostate; sr, seminal receptacle; vg, vagina.

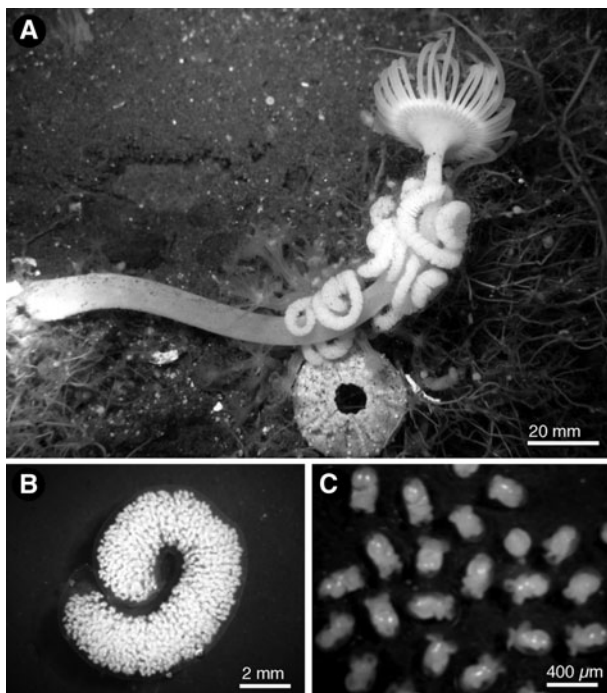


Fig. 16. Masses and embryos of *Guyvalvoria paradoxa*. (A) Several masses attached to the stalk of a giant solitary hydroid *Monocaulus parvula*, photographed at the Dayton's Wall site in McMurdo Sound at approximately 30 m depth; (B) a single mass photographed in the laboratory; (C) embryos removed from the mass pictured in B and photographed under a compound microscope. Photographs by B. Miller.



Fig. 17. *Guyvalvoria paradoxa* on *Monocaulus microrrhiza*, photographed in the field at Dayton's Wall, McMurdo Sound. Photograph by B. Miller.

29 November 2007, 1 specimen, 18 mm preserved length (LACM 176424).

EXTERNAL MORPHOLOGY

Colour uniformly translucent reddish-purple with the digestive system visible as a whitish mass in some parts of the body (Figure 1C, D), giving the body a general orange appearance. Some specimens substantially paler, possibly due to their diet. Branches of the digestive system visible in the cerata, as irregular, branched purple tubes. Cnidosacs opaque white. Dorsum, rhinophores and cerata covered with numerous opaque white dots, more densely arranged on the cerata. Rhinophores long, smooth, about 3–4 times as long as the oral tentacles. Cerata very elongate and narrow, wider near the base. Cerata arranged in 17 rows, 4 of them anterior to the genital aperture, 8 situated between the genital opening and the posterior end of the pericardium, and the rest posterior to the pericardium. Reproductive opening with the penial opening slightly anterior to the female opening. Anus dorsal, situated on the right side of the dorsum, posterior to the pericardium, behind the 10th row of cerata.

INTERNAL ANATOMY

Radular formula $11 \times 0.1.0$ in a 15 mm preserved length specimen. Radular teeth narrow and elongate, with a large, prominent, conical central cusp. On the sides of the cusp there are 13–15 small denticles, covering about 1/5 of the length of each tooth (Figure 14A, C). Jaws elongate (Figure 14B), with no masticatory border denticles visible.

Reproductive system with a large ampulla folded once (Figure 15), connecting with the female gland complex. Prostate long, tubular, emerging from the female gland complex and connecting with a short, wide penis and a large, folded accessory penial gland. Penis with no cuticular stylet. Vagina long, straight, connecting with a small, rounded bursa copulatrix and an elongate seminal receptacle (Figure 15).

BIOLOGY

The egg masses of *Guyvalvoria paradoxa* are thick, curved gelatinous bands between 3–6 mm in diameter and between 1 and >5 cm in length, ranging in colour from white to beige, pink, or pale purple (Figure 16A, B). Embryos in most masses observed were at the late veliger stage and were whitish, 350–390 µm in length, and each embryo was contained in an ovoid capsule that was slightly larger than the embryo (Figure 16C) (anterior edge of velum to shell apex). Occasionally, a mass has capsules that contained two, or rarely three embryos instead of one. Masses were locally abundant in October–December and were laid on hydroids, most frequently the stalks of the giant solitary species *Moncaulus microrrhiza* or *Monocaulus parvula* (Figure 17). Egg masses were identified to species by COI sequence data, which were identical to adult *Guyvalvoria* (Shields *et al.*, submitted).

The egg masses were mostly at the late veliger stage when collected, but some were at earlier stages of development (blastulae or trochophores). The large vela and small yolk volume of the embryos suggest this species may have planktonic development. Several different types of similarly sized larvae belonging to opisthobranch species have been reported from plankton samples in the Southern Ocean, though they have not been identified to species (Stanwell-Smith *et al.*, 1997).

REMARKS

Eliot (1907a) described *Cuthonella paradoxa* Eliot, 1907 (type locality: Winter Quarters Bay, McMurdo Sound, Antarctica) as a yellow species with traces of reddish brown, some minute reddish dots on the larger cerata, and the intestines and hepatic diverticula seen through the integuments are reddish brown. A radular tooth is illustrated (Eliot, 1907a: text figure 27) as having a large central cusp with a series of denticles situated on each side of the cusp. Both the radular morphology and the description of the live animals are very similar to those of the specimens here examined, also collected from McMurdo Sound. Thus, we regard our specimens as belonging to *Cuthonella paradoxa*.

Martynov (2006) reviewed the status of polar species of Tergipedidae with the anus situated caudally in comparison to most species of *Cuthona*. He resurrected the name *Guyvalvoria* for three Antarctic species and introduced the new name *Murmania* for an Arctic species having a dorsal triangular ridge-like wedging between the rhinophores. Martynov (2006) regarded *Cuthonella paradoxa* as a synonym of *Guyvalvoria francaisi* Vayssière, 1906 (type locality: 'Île Wandel' = Renaud Island, Antarctic Peninsula) and verified the morphology of the type material of both names. Martynov (2006) also introduced two new species names of *Guyvalvoria*, *G. gruzovi* Martynov, 2006 (type locality: Amery Ice Shelf) and *G. savinkini* Martynov, 2006 (type locality: off Kerguelen Island). None of these species has ever been illustrated or described alive, thus it is difficult to compare them with the live material here examined. Martynov's (2006) descriptions are comprehensive and include SEM of the radulae as well as illustrations of the reproductive anatomy, making anatomical comparisons possible.

Both the radular morphology and reproductive anatomy of *Guyvalvoria francaisi* illustrated by Martynov (2006) are very different from those of the specimens of *Cuthonella paradoxa* here examined. For example, the radular teeth of *G. francaisi*

have a very narrow, sharp cusp with large denticles on each side (Martynov, 2006: figure 3A, B), whereas in *C. paradoxa* the central cusp is much wider and the lateral denticles much smaller than those of *G. francaisi*. The reproductive system of *G. francaisi* has a wide, muscular prostate (Vayssière, 1906: pl. 2, figure 23; Martynov, 2006: figure 5D) and appears to lack a seminal receptacle and bursa copulatrix (Martynov, 2006: figure 5D), whereas in *C. paradoxa* the prostate is a narrow tube much more similar to that *G. savinkini*, and it has a large, distinctive bursa copulatrix and seminal receptacle, which are absent in *G. francaisi*. Thus, we consider *C. paradoxa* to be distinct from *G. francaisi*. However, and in the absence of a comprehensive phylogenetic analysis we will follow Martynov's (2006) classification and regard *C. paradoxa* as a member of *Guyvalvoria*.

The specimens of *Guyvalvoria paradoxa* here examined display many similarities to specimens described by Pfeffer in Martens & Pfeffer (1886) as *Aeolis schraderi* (type locality: South Georgia Island) and later re-described by Odhner (1926, 1944) as *Cuthona schraderi*. These similarities include external features and the radular morphology. Odhner (1926, 1944) re-examined Pfeffer's specimens borrowed from the Zoological Museum in Hamburg, Germany, and considered specimen No. 6973 as the 'type' of the species (this decision makes this specimen the lectotype of *Aeolis schraderi*—ICZN, 1999, Article 74.5). Odhner (1926, 1944) described in detail the external morphology of this specimen. Odhner (1926) also described the radula of specimen No. 7534, which according to Odhner (1944) clearly belongs to *C. schraderi*. The lectotype of *Aeolis schraderi* (specimen No. 6973), specimen No. 7534, and the specimens here examined both have the genital aperture with the male opening slightly separated from the female opening, a similar number of rows of cerata, the anus situated close to the 9th or 10th row of cerata, and radular teeth with a large central cusp with multiple denticles on each side (the lectotype teeth have not been described or illustrated). The colour of *Aeolis schraderi* was described by Pfeffer in Martens & Pfeffer (1886) as orange in the live animals and brown in the preserved state, which also resembles the colour of the living animals here examined. However, the descriptions and re-descriptions of *Cuthona schraderi* do not contain enough information to determine positively whether or not they are conspecific with *Guyvalvoria paradoxa*.

Odhner (1944) also mentioned three other specimens collected at the German station in South Georgia (No. 7977, No. 8088 and No. 7534), which are either mixed lots or their identification is unclear. The radula of specimen No. 8088 illustrated by Odhner (1944: text figure 29) is clearly different from that of specimen No. 7534 illustrated by Odhner (1926: text figure 18). Odhner (1944) explained the differences as intraspecific variation. The reproductive system and position of the anus of specimen No. 8088 (Odhner, 1944: text figures 22 & 32) are very different from the specimens here examined and more consistent with those of a species of *Cuthona*. For instance, specimen No. 8088 lacks a seminal receptacle and has a very elongated and straight penial gland connected to a long penis, similar to those described here for *Cuthona crinita*. Additionally, Odhner (1944) described *Cuthona schraderi* var. *bouvetensis* Odhner, 1944, which has radular morphology similar to that of specimen No. 8088, but very different from the original specimens assigned to *Aeolis schraderi*. The identity of all these specimens is unclear.

ACKNOWLEDGEMENTS

We thank ANUDE team members P. Kitaeff, B. Miller, L. Mullen, J. Sprague, and E. Schreiber for assistance with collecting and photographing specimens, R. Robbins and S. Rupp for collecting specimens and dive support, and the science support staff of McMurdo Station for facilitating this research. Riccardo Cattaneo-Vietti kindly provided us with a photograph of the live animal and a scanning electron micrograph of the radula of *C. modesta*. Lindsey Groves (LACM) assisted with the curation of the specimens. This project was supported by National Science Foundation grants ANT-0551969 to A.L.M., ANT-0440577 to H.A.W., and DEB-0329054 to T.M. Gosliner and A.V.

REFERENCES

- Brueggeman P.** (1998) *Underwater field guide to Ross Island & McMurdo Sound, Antarctica*. Available at: <http://www.peterbrueggeman.com/nsf/fguide/index.html> (accessed December 2010).
- Burn R.** (1973) Opisthobranch molluscs from the Australian sub-Antarctic territories of Macquarie and Heard Islands. *Proceedings of the Royal Society of Victoria* 86, 39–46.
- Cattaneo-Vietti R.** (1991) Nudibranch molluscs from the Ross Sea, Antarctica. *Journal of Molluscan Studies* 57, 223–228.
- Eliot C.N.E.** (1905) II.—The Nudibranchiata of the Scottish National Antarctic Expedition. *Report of the Scientific Results of the Voyage of S.Y. 'Scotia' during the years 1902, 1903, and 1904 under the leadership of William S. Bruce LL.D., F.R.S.E.* 5 (*Zoology*), pp. 11–24.
- Eliot C.N.E.** (1907a) Mollusca IV.—Nudibranchiata. *National Antarctic Expedition 1901–1904. Natural History Zoology 2 (Vertebrata: Mollusca: Crustacea)*, pp. 1–28, pl. 1.
- Eliot C.N.E.** (1907b) Nudibranchs from New Zealand and the Falkland Islands. *Proceedings of the Malacological Society of London* 7, 327–361, pl. 28.
- ICZN** (1999) *International Code of Zoological Nomenclature*. 4th edition. London: International Trust for Zoological Nomenclature.
- Kiko R., Kramer M., Spindler M. and Wägele H.** (2008) *Tergipes antarcticus* (Gastropoda, Nudibranchia): distribution, life cycle, morphology, anatomy and adaptation of the first mollusc known to live in Antarctic sea ice. *Polar Biology* 31, 1383–1395.
- Marcus Er.** (1959) Lamellariacea und Opisthobranchia. Reports of the Lund University Chile Expedition 1848–49, 36. *Lunds Universitets Årsskrift, Ny Följd* 55, 1–134.
- Martens E von. and Pfeffer G.** (1886) Die Mollusken von Süd-Georgien nach der Ausbeute der Deutschen Station 1882–83. *Jahrbuch der Hamburgischen Wissenschaftlichen Anstalten* 3, 63–135, 4 pls.
- Martynov A.V.** (2006) Archaic Tergipedidae of the Arctic and Antarctic: *Murmania antiqua* gen. et sp. nov. from the Barents Sea and a revision of the genus *Guyvalvoria* Vayssièrè with descriptions of two new species. *Ruthenica* 16, 73–88.
- Miller M.C.** (1971) Aeolid nudibranchs (Gastropoda: Opisthobranchia) of the families Flabellinidae and Eubranchidae from New Zealand waters. *Zoological Journal of the Linnean Society* 50, 311–335, 1 pl.
- Miller M.C.** (1977) Aeolid nudibranchs (Gastropoda: Opisthobranchia) of the family Tergipedidae from New Zealand waters. *Zoological Journal of the Linnean Society* 60, 197–222, 1 pl.
- Minichev Y.S.** (1972) Opisthobranchiate molluscs of the Davis Sea. *Issledovaniia Fauny Morei* 11, 358–382.
- Odhner N.H.** (1926) Die Opisthobranchien. *Further Zoological Results of the Swedish Antarctic Expedition, 1901–1903* 2, 1–100, 3 pls.
- Odhner N.H.** (1934) The Nudibranchiata. *British Antarctic ('Terra Nova') Expedition, 1910. Natural History Report. Zoology* 7, 229–310, 3 pls.
- Odhner N.H.** (1944) Mollusca: Nudibranchia and Scaphopoda with zoogeographical remarks and explanations. *Scientific Results of the Norwegian Antarctic Expedition 1927–1928* 21, 1–48.
- Pelseneer P.** (1903) Mollusques (Amphineures, Gastropodes et Lamellibranches). *Expédition Antarctique Belge. Résultats du Voyage du S.Y. Belgica en 1897–1898–1899 sous le commandement de A. de Gerlache de Gomery. Rapports Scientifiques Publiés aux frais du Gouvernement Belge, sous la Direction de la Commission de la Belgica (Zoologie)* 7, 1–85, pls. 1–9.
- Stanwell-Smith D., Hood A. and Peck L.S.** (1997) *A field guide to the pelagic invertebrates larvae of the maritime Antarctic*. Cambridge: British Antarctic Survey.
- Thiele J.** (1912) Die Antarktischen Schnecken und Muscheln. In von Drygalski E. (ed.) *Sonderabdruck aus 'Deutsche Südpolar-Expedition 1901–1903'*. Volume 8 (*Zoologie* 5). Berlin: Druck und Verlag von Georg Reimer, pp. 183–285.
- Vayssièrè A.** (1906) Mollusques nudibranches et marséniadés. *Expédition Antarctique Française (1903–1905) commandée par le Dr. Jean Charcot. Mollusques*, pp. 1–51, pls. 1–4.
- Vicente N.** (1974) Nudibranches des îles Kerguelen. *Téthys* 5, 629–634, pl. 1.
- Vicente N. and Arnaud P.M.** (1974) Invertébrés marins des XII^{ème} et XV^{ème} expéditions Antarctiques Françaises en Terre Adélie. 12. Gastéropodes Opisthobranches. *Téthys* 5, 531–548.
- Wägele H.** (1990) Revision of the Antarctic genus *Notaeolidia* (Gastropoda, Nudibranchia), with a description of a new species. *Zoologica Scripta* 19, 309–330.
- and
- Williams G.C and Gosliner T.M.** (1979) Two new species of nudibranchiate mollusks from the west coast of North America, with a revision of the family Cuthonidae. *Zoological Journal of the Linnean Society* 67, 203–223.

Correspondence should be addressed to:

Á. Valdés
Department of Biological Sciences, California State
Polytechnic University
3801 West Temple Avenue, Pomona,
California 91768, USA
email: aavaldes@csupomona.edu