




Submitral aneurysm correction with mitral valve repair: a case report

Valdano Manuel^{1,2} , Marília da Costa¹ and Joseneyde Carvalho¹

¹Cardiovascular and Thoracic Service, Complexo Hospitalar de Doenças Cardio-Pulmonares Cardeal Dom Alexandre do Nascimento, Luanda, Angola and ²Cardiothoracic Service, Clínica Girassol, Luanda, Angola

Brief Report

Cite this article: Manuel V, da Costa M, and Carvalho J (2024) Submitral aneurysm correction with mitral valve repair: a case report. *Cardiology in the Young* **34**: 198–200. doi: [10.1017/S1047951123003827](https://doi.org/10.1017/S1047951123003827)

Received: 21 September 2023

Revised: 4 October 2023

Accepted: 4 October 2023

First published online: 13 November 2023

Keywords:

Aneurysm; submitral aneurysm; mitral valve repair; case report

Corresponding author:

Valdano Manuel;

Email: valdanympub@gmail.com

Abstract

Submitral aneurysm is a rare type of non-ischaemic ventricular aneurysm. We describe the case of a 26-year-old woman with progressive dyspnoea for approximately 1 year who was diagnosed with a ruptured submitral aneurysm in the left atrium with severe regurgitation. The patient underwent aneurysm correction and mitral valve repair, and post-operative echocardiography showed no residual abnormalities. The patient remains asymptomatic.

Introduction

Submitral aneurysm is a relatively uncommon disease characterised by aneurysmal dilation of the left atrioventricular junction resulting from weakness in the posterior annulus of the mitral valve that can lead to heart failure.^{1–3} Although many reported cases have involved individuals of African ancestry, cases have been reported worldwide.^{3,4} Herein, we report the case of a patient with a ruptured submitral aneurysm in the left atrium with severe regurgitation who underwent successful mitral valve repair and aneurysmal correction.

Case report

Written informed consent was obtained from the patient.

A 26-year-old black woman presented with a 1-year history of progressive dyspnoea. Physical examination revealed a grade 3/6 systolic murmur in the mitral valve area. The physical examination and laboratory test results were unremarkable. Chest radiography revealed cardiomegaly with a cardiothoracic index of 0.63. Electrocardiography showed a sinus rhythm with a heart rate of 69 beats/min and signs of left atrial dilatation with no other alterations. A transthoracic two-dimensional echocardiogram revealed a saccular formation arising from the posterior leaflet of the mitral valve (Fig 1A). The aneurysm ruptured into the left atrium (Fig 1B), generating regurgitation in Doppler colour (Figs 1C and 1D). The patient underwent open-heart mitral valve surgery by transatrial approach, and after left atriotomy, a saccular aneurysm ruptured into the left atrium, as demonstrated by echocardiography (Fig 2A). The aneurysm was removed (Fig 2B). An aneurysmal form was observed in the region where the posterior annulus was destroyed; it was closed with a bovine pericardium and a separated suture. Subsequently, the posterior annulus and the leaflet were reconstructed with autologous pericardium fixed in glutaraldehyde solution (Fig 2C). A flexible artificial ring (No. 32; Medtronic Inc., Minneapolis, MN, United States of America) was also implanted (Fig 2D). A saline test was performed, and the results were satisfactory. The cardiopulmonary bypass time was 62 min, and the x-clamping time was 57 min. Intraoperative echocardiography revealed no aneurysms or regurgitations (Fig 2E). Post-operative transthoracic echocardiography showed a transvalvular gradient of 2.7 mmHg with satisfactory left ventricular function. The patient remained asymptomatic after 2 months of follow-up.

Discussion

Submitral aneurysm is defined as an aneurysmal dilatation of the left atrioventricular junction resulting from weakness in the posterior annulus of the mitral valve.^{1,5} Submitral aneurysms are most commonly reported in young black adults with acquired diseases such as tuberculosis or previous mitral valve surgery, but no acquired aetiology has been proven.^{1,2,5} However, reports of submitral aneurysms in children suggest a potential congenital aetiology, although this remains unproven.^{1,6} Our patient was a black woman without a history of infectious diseases or previous cardiac surgery; therefore, CHD appears to be a plausible aetiology in our patient. Clinically, patients present with heart failure, cardiac murmur, and cardiothoracic index enlargement based on the size and whether the aneurysm has ruptured.^{2,8} Our patient presented with all these clinical findings. Two-dimensional transthoracic echocardiography is the gold

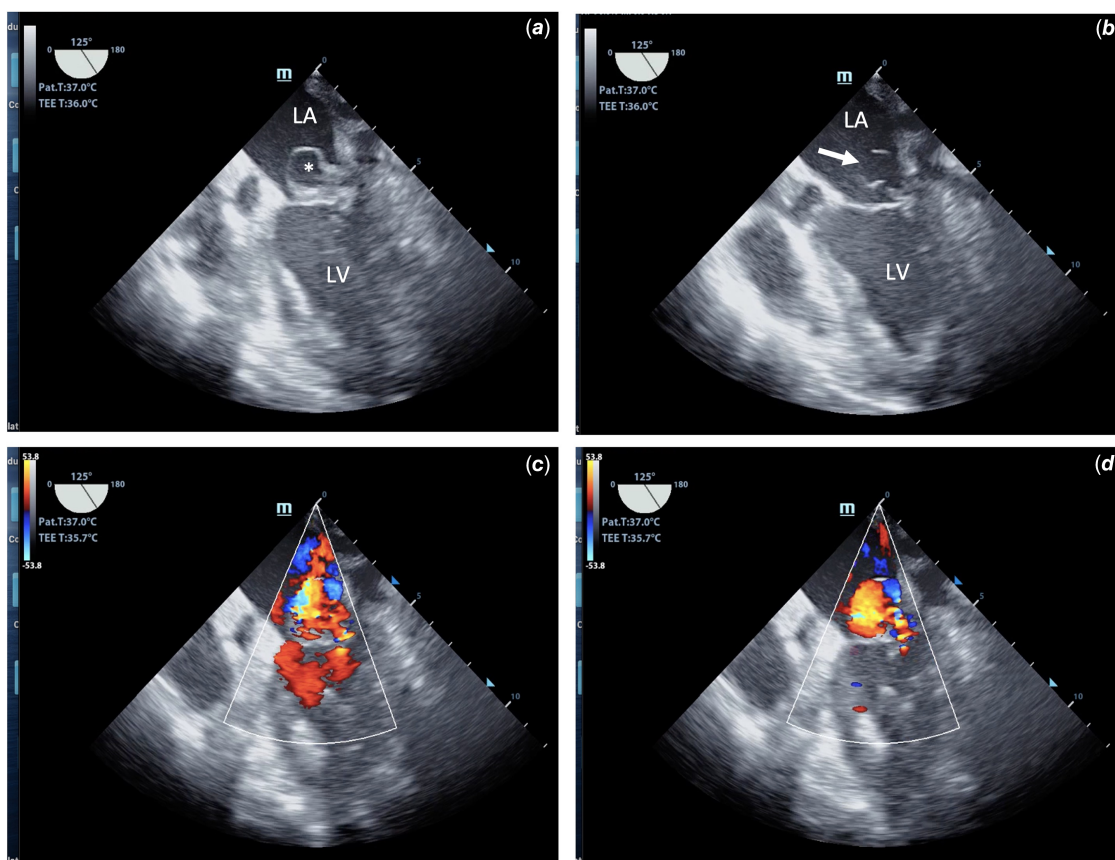


Figure 1. Pre-operative transesophageal two-dimensional echocardiogram: **a** shows the aneurysmal sac in the left atrium (white *). **b** reveals the ruptured aneurysm into the left atrium (white arrow). **c** and **d** show a severe regurgitation primarily caused by the aneurysm rupture. LA = left atrium; LV = left ventricle.

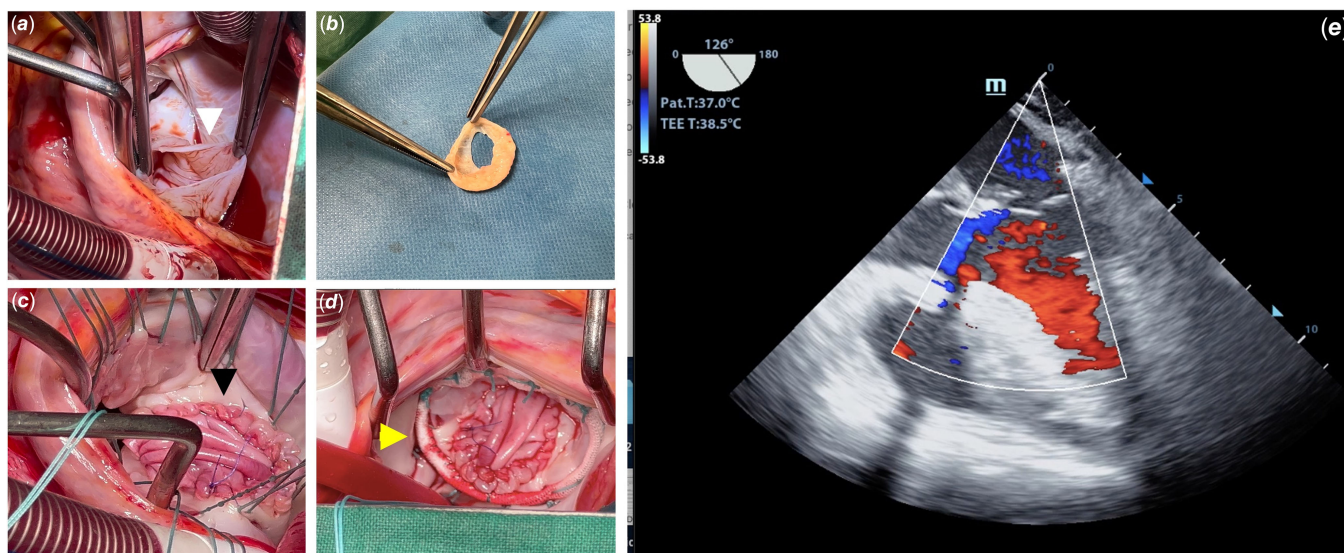


Figure 2. Surgical findings, approach, and post-operative: **a** shows the aneurysmal sac ruptured into the left atrium (white arrow). **b** shows the aneurysmal sac with the exit hole for the left atrium. **c** demonstrates the aspect after the annulus reconstruction and posterior leaflet enlargement with autologous pericardium (black arrow). **d** shows the prosthetic ring used to reinforce the ring (yellow arrow). **e** shows a post-operative transesophageal two-dimensional echocardiogram with no residual aneurysm or mitral valve regurgitation. Ao = aorta; LA = left atrium.

standard diagnostic tool; however, chest CT and MRI can be useful for surgical planning.^{5,7,8} In our case, no other imaging modalities were required. Surgery is the treatment of choice and involves closing the aneurysmal neck. When the aneurysm is large, the

procedure must be performed with bovine pericardium, and whenever possible, with valve-sparing, although mitral valve replacement may be required and has been performed in many cases.^{1,6,9} Repairs are preferable to replacements. In our case, we

obtained a favourable outcome with no complications or adverse events. The patient remained asymptomatic during the follow-up period.

Data availability statement. The data underlying this article will be shared by the corresponding authors upon reasonable request.

Acknowledgements. None.

Author contribution. Valdano Manuel performed the surgery and idealised, wrote, and revised the manuscript.

Marília da Costa performed the surgery and acquired the images.

Joseney Carvalho performed the surgery and care for the patient in the post-operative period.

Financial support. This research received no specific grant from any funding agency, commercial, or not-for-profit sectors.

Competing interests. The authors declare none.

Ethical standard. The authors assert that all procedures contributing to this work comply with the ethical standards of the relevant national guidelines on human experimentation and with the Helsinki Declaration of 1975, as revised in 2008, and have been approved by the institutional committee.

References

1. Manuel V, Sousa-Uva M, Miguel G, et al. Submitral aneurysm in children. *J Card Surg* 2016; 31: 551–555.
2. Morais H, Manuel V, Costa JC. Submitral aneurysm and the new imaging modalities: will magnetic resonance imaging be necessary? *Int J Cardiol* 2016; 220: 833–834.
3. Rajbanshi BG, Rajbhandari N, Pradhan S, et al. Submitral aneurysm: an unusual aneurysm of the left ventricle. *Ann Thorac Surg* 2019; 108: e11–e13.
4. Ribeiro PJ, Mendes RG, Vicente WV, Menardi AC, Evora PR. Submitral left ventricular aneurysm. Case report and review of published Brazilian cases. *Arq Bras Cardiol* 2001; 76: 395–402.
5. Manuel V. Submitral aneurysm is an acquired or congenital heart disease? *J Card Surg* 2022; 37: 4015–4015.
6. Méot M, Bajolle F, Bonnet D. Submitral aneurysm communicating with coronary sinus in a child. *Cardiol Young* 2022; 32: 1149–1150.
7. Morais H, Sousa-Uva M, Martins T, Manuel V, Costa JC. Rupture of right sinus of Valsalva aneurysm into right cardiac chambers: the role of different imaging modalities. *J Cardiovasc Ultrasound* 2016; 24: 84–86.
8. Morais H. Submitral aneurysm: an echocardiography study in a tertiary center in Angola. *J Clin Exp Cardiol* 2014; 5: 2155–9880.
9. Purushotham S, Manohar SRK, Sivasubramaniam S, Neelakandhan KS. Submitral left ventricular aneurysm: the location of the circumflex coronary artery in relation to the aneurysm influences the surgical approach and outcome. *J Thorac Cardiovasc Surg* 2005; 129: 1175–1177.