

**JOURNAL OF THE
MARINE BIOLOGICAL ASSOCIATION
OF THE UNITED KINGDOM**

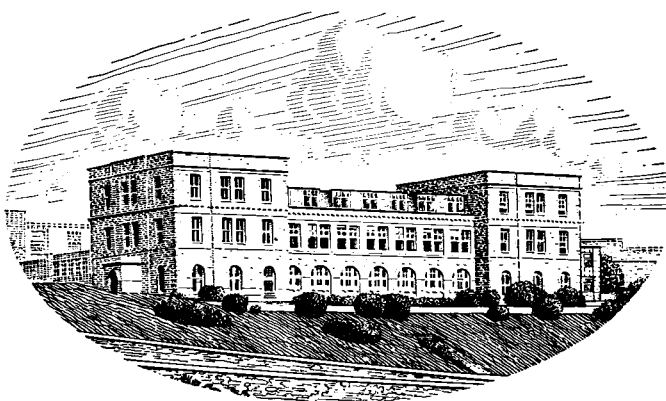
PUBLISHED BY
THE SYNDICS OF THE CAMBRIDGE UNIVERSITY PRESS

Bentley House, 200 Euston Road, London, N.W. 1
American Branch: 32 East 57th Street, New York, N.Y. 10022

© Copyright Marine Biological Association of the U.K.

Printed in Great Britain at the University Printing House, Cambridge

JOURNAL OF THE
MARINE BIOLOGICAL ASSOCIATION
OF THE UNITED KINGDOM



THE PLYMOUTH LABORATORY

VOLUME 52

1972

CAMBRIDGE
AT THE UNIVERSITY PRESS

1972

The Council of the Marine Biological Association wish it to be understood that they do not accept responsibility for the accuracy of statements published in this Journal, excepting when those statements are contained in an official report of the Council.

CONTENTS OF VOLUME 52

Number 1, pp. 1-276, 17 February 1972
 Number 2, pp. 276-492, 9 May 1972
 Number 3, pp. 493-792, 14 August 1972
 Number 4, pp. 793-1066, 1 December 1972

	PAGE
Report of the Council: 1971-2	1067
Income and Expenditure Account and Balance Sheet	1103
OBITUARY, DR H. W. HARVEY	773
OBITUARY, DR MARIE V. LEBOUR	777
ALEXANDROWICZ, J. S. The comparative anatomy of leg proprioceptors in some decapod crustacea	605
ALLEN, JOHN A. and SCHELTEMA, RUDOLF S. The functional morphology and geographical distribution of <i>Planktomya henseni</i> , a supposed neotenous pelagic bivalve	19
ARMSTRONG, F. A. J., BUTLER, E. I. and BOALCH, G. T. Hydrographic and nutrient chemistry surveys in the western English Channel during 1963 and 1964	915
ARNOLD, D. C. Salinity tolerances of some common prosobranchs	475
BASS, N. R. and BRAFIELD, A. E. The life cycle of the polychaete <i>Nereis virens</i>	701
BOALCH, G. T., <i>see</i> ARMSTRONG, BUTLER and BOALCH	915
BOYDEN, C. R. The behaviour, survival and respiration of the cockles <i>Cerastoderma edule</i> and <i>C. glaucum</i> in air	661
BRAFIELD, A. E., <i>see</i> BASS and BRAFIELD	701
BROWN, C. M., MACDONALD-BROWN, DEBORAH S. and STANLEY, S. O. Inorganic nitrogen metabolism in marine bacteria: Nitrogen assimilation in some marine pseudomonads	793
BRUN, EINAR Food and feeding habits of <i>Luidia ciliaris</i> [Echinodermata: Asteroidea]	225
BURROWS, E. M., <i>see</i> WILKINSON and BURROWS	49, 59
BUTLER, E. I. and TIBBITTS, SUSAN Chemical survey of the Tamar estuary. I. Properties of the waters <i>See also</i> ARMSTRONG, BUTLER and BOALCH SOUTHWARD and BUTLER	681 915 931
CLARKE, MALCOLM R. and MERRETT, NIGEL The significance of squid, whale and other remains from the stomachs of bottom-living deep-fish	599
COOK, P. A. and GABBOTT, P. A. Seasonal changes in the biochemical composition of the adult barnacle, <i>Balanus balanoides</i> , and the possible relationships between biochemical composition and cold-tolerance	805

	PAGE
CORNELIUS, P. F. S.	
Second occurrence of <i>Stygiomedusa fabulosa</i> [Scyphozoa]	487
CORNER, E. D. S., HEAD, R. N. and KILVINGTON, C. C.	
On the nutrition and metabolism of zooplankton. VIII. The grazing of <i>Biddulphia</i> cells by <i>Calanus helgolandicus</i>	847
CORRE, PIERRE, <i>see</i> TREGUER, CORRE and COURTOT	1045
COURTOT, PIERRE, <i>see</i> TREGUER, CORRE and COURTOT	1045
CRISP, MARY	
Photoreceptive function of an epithelial receptor in <i>Nassarius reticulatus</i> [Gastropoda, Proso- branchia]	437
DAVENPORT, JOHN	
Volume changes shown by some littoral anomuran crustacea	863
DEMIR NECLÄ	
The abundance and distribution of the eggs and larvae of some teleost fishes off Plymouth in 1969 and 1970. II. The postlarvae of <i>Calloinymus</i>	997
<i>See also</i> SOUTHWARD and DEMIR	987
DENTON, E. J., LIDDICOAT, JENNIFER, D. and TAYLOR, D. W.	
The permeability of gases of the swimbladder of the conger eel (<i>Conger conger</i>)	727
DENTON, E. J. and SAUNDERS, R. L.	
On the organization of silvery layers in the skin of the Atlantic salmon (<i>Salmo salar</i>) during smoltification and on the regeneration of these layers under abnormal lighting conditions	889
Osmotic properties of the epithelial layers covering scales of herring (<i>Clupea harengus</i>) and Atlantic salmon (<i>Salmo salar</i>)	899
DILLY, P. N., <i>see</i> STEBBING and DILLY	443
EDWARDS, C.	
The hydroids and the medusae <i>Podocoryne areolata</i> , <i>P. borealis</i> and <i>P. carnea</i>	97
EIDEMILLER, ANNE, <i>see</i> KRITZLER and EIDEMILLER	553
ELDER, HUGH Y.	
Connective tissues and body wall structure of the polychaete <i>Polyphysia crassa</i> (<i>Lipobranchius</i> <i>jeffreysii</i>) and their significance	747
FISH, J. D.	
The breeding cycle and growth of open coast and estuarine populations of <i>Littorina littorea</i>	1011
FITZMAURICE, PATRICK, <i>see</i> KENNEDY and FITZMAURICE	557
FRETTER, VERA	
Metamorphic changes in the velar musculature, head and shell of some prosobranch veligers	161
GABBOTT, P. A., <i>see</i> COOK and GABBOTT	805
GAGE, JOHN	
A preliminary survey of the benthic macrofauna and sediments in Lochs Etive and Creran, sea- lochs along the west coast of Scotland	237
GARDNER, DORIS and RILEY, J. P.	
The component fatty acids of the lipids of some species of marine and freshwater molluscs	827
Seasonal variations in the component fatty-acid distributions of the lipids of <i>Balanus balanoides</i>	839
GILCHRIST, I., <i>see</i> MACDONALD, GILCHRIST and TEAL	213

CONTENTS OF VOLUME 52

vii

	PAGE
GRAY, JOHN S., <i>see</i> NEWTON and GRAY	33
GREEN, J. C. and LEADBEATER, B. S. C. <i>Chrysochromulina parkeae</i> sp.nov. [Haptophyceae] a new species recorded from S.W. England and Norway	469
GRUFFYDD, Ll. D. Mortality of scallops on a Manx scallop bed due to fishing	449
HARRIS, ROGER P. The distribution and ecology of the interstitial meiofauna of a sandy beach at Whitsand Bay, East Cornwall	1
Horizontal and vertical distributions of the interstitial harpacticoid copepods of a sandy beach	375
Seasonal changes in the meiofauna population of an intertidal sand beach	389
Seasonal changes in population density and vertical distribution of harpacticoid copepods on an intertidal sand beach	493
Reproductive activity of the interstitial copepods of a sandy beach	507
HEAD, R. N., <i>see</i> CORNER, HEAD and KILVINGTON	847
HERRING, PETER J. Depth distribution of the carotenoid pigments and lipids of some oceanic animals. 1. Mixed zooplankton, copepods and euphausiids	179
Bioluminescence of searsid fishes	879
HINCHLIFFE, P. R. and RILEY, J. P. The effect of diet on the component fatty-acid composition of <i>Artemia salina</i>	203
JENNINGS, K. N. An example of hybridization between <i>Pagurus bernhardus</i> and <i>Pagurus pubescens</i> [Crustacea: Anomura]	1057
JONES, A. Studies on egg development and larval rearing of turbot, <i>Scophthalmus maximus</i> L., and brill, <i>Scophthalmus rhombus</i> L., in the laboratory	965
JONES, M. B. Osmoregulation in the <i>Jaera albifrons</i> group of species [Isopoda, Asellota]	419
KENNEDY, MICHAEL and FITZMAURICE, PATRICK The biology of the bass, <i>Dicentrarchus labrax</i> , in Irish waters	557
KILVINGTON, C. C., <i>see</i> CORNER, HEAD and KILVINGTON	847
KRITZLER, HENRY and EIDEMILLER, ANNE A diver-monitored dredge for sampling motile epibenthos	553
LARKUM, A. W. D. Fron structure and growth in <i>Laminaria hyperborea</i>	405
LEADBEATER, B. S. C. Fine-structural observations on some marine choanoflagellates from the coast of Norway	67
<i>See also</i> GREEN and LEADBEATER	469
LESH-LAURIE, GEORGIA E. <i>Cordylophora</i> morphogenesis: precocious sporosac development in non-sessile colonies	191
LIDDICOAT, JENNIFER D. and ROBERTS, B. L. The ionic composition of the lateral-line canal fluid of dogfish	653
<i>See also</i> DENTON, LIDDICOAT and TAYLOR	727

	PAGE
MACDONALD, A. G., GILCHRIST, I. and TEAL, J. M.	
Some observations on the tolerance of oceanic plankton to high hydrostatic pressure.	213
MACDONALD-BROWN, DEBORAH S., <i>see</i> BROWN, MACDONALD-BROWN and STANLEY	793
MERRETT, NIGEL, <i>see</i> CLARKE and MERRETT	599
MILLER, P. J.	
Gobiid fishes of the Caspian genus <i>Knipowitschia</i> from the Adriatic Sea	145
NAYLOR, E., <i>see</i> RODRIGUEZ and NAYLOR	81
NEWTON, ANDREW J. and GRAY, JOHN S.	
Seasonal variation of the suspended solid matter off the coast of North Yorkshire	33
REID, PHILIP C.	
Dinoflagellate cyst distribution around the British Isles	939
RILEY, J. P.	
<i>See</i> HINCHLIFFE and RILEY	203
<i>See</i> GARDNER and RILEY	827, 839
ROBERTS, B. L., <i>see</i> LIDDICOAT and ROBERTS	653
RODRIGUEZ, G. and NAYLOR, E.	
Behavioural rhythms in littoral prawns	81
ROE, H. J. S.	
The vertical distributions and diurnal migrations of calanoid copepods collected on the SOND Cruise, 1965. I. The total population and general discussion	277
The vertical distributions and diurnal migrations of calanoid copepods collected on the SOND Cruise, 1965. II. Systematic account: families Calanidae up to and including the Aetideidae	315
The vertical distributions and diurnal migrations of calanoid copepods collected on the SOND Cruise, 1965. III. Systematic account: families Euchaetidae up to and including the Metridiidae	525
The vertical distributions and diurnal migrations of calanoid copepods collected on the SOND Cruise, 1965. IV. Systematic account of families Lucicutiidae to Candaciidae. The relative abundance of the numerically most important genera	1021
SAUNDERS, R. L., <i>see</i> DENTON and SAUNDERS	889, 899
SCHELTEMA, RUDOLF S., <i>see</i> ALLEN and SCHELTEMA	19
SOUTHWARD, A. J. and BUTLER, E. I.	
A note on further changes of sea temperature in the Plymouth area	931
SOUTHWARD, A. J. and DEMIR, NECLÂ	
The abundance and distribution of eggs and larvae of some teleost fishes off Plymouth in 1969 and 1970. I. Methods and hydrography	987
STANLEY, S. O., <i>see</i> BROWN, MACDONALD-BROWN and STANLEY	793
STEBBING, A. R. D.	
Preferential settlement of a bryozoan and serpulid larvae on the younger parts of <i>Laminaria</i> fronds	765
STEBBING, A. R. D. and DILLY, P. N.	
Some observations on living <i>Rhabdopleura compacta</i> [Hemichordata]	443
TAYLOR, D. W., <i>see</i> DENTON, LIDDICOAT and TAYLOR	727
TEAL, J. M., <i>see</i> MACDONALD, GILCHRIST and TEAL	213
THEODOR, J. L., <i>see</i> WEBB and THEODOR	903
TIBBITTS, SUSAN, <i>see</i> BUTLER and TIBBITTS	681

CONTENTS OF VOLUME 52

ix

	PAGE
TREGUER, PAUL, LE CORRE, PIERRE and COURTOT, PIERRE A method for determination of the total dissolved free fatty-acid content of sea water	1045
WARDLE, C. S. The changes in blood glucose in <i>Pleuronectes platessa</i> following capture from the wild	635
WALKER, G. The biochemical composition of the cement of two barnacle species, <i>Balanus hameri</i> and <i>Balanus crenatus</i>	429
WALNE, P. R. The influence of current speed, body size and water temperature on the filtration rate of five species of bivalves.	345
WEBB, J. E. and THEODOR, J. L. Wave-induced circulation in submerged sands	903
WHITE, I. C. On the ecology of an adult digenetic trematode <i>Proctoeces subtenuis</i> from a lamellibranch host <i>Scrobicularia plana</i>	457
WILKINSON, M. and BURROWS, E. M. An experimental taxonomic study of the algae confused under the name <i>Gomontia polyrhiza</i>	49
The distribution of marine shell-boring green algae	59
WILLIAMS, R. B. Notes on the history and invertebrate fauna of a poikilohaline lagoon in Norfolk	945

ABSTRACTS OF MEMOIRS

RECORDING WORK DONE IN THE PLYMOUTH LABORATORY

BINYON, J., 1972. The effects of diluted sea water upon podial tissues of the starfish <i>Asterias rubens</i> L.	789
BOALCH, G. T. & PARKE, M., 1971. The prasinophycean genera (Chlorophyta) possibly related to fossil genera, in particular the genus <i>Tasmanites</i>	789
BONE, Q., 1971. Muscular innervation and fish classification	789
BONE, Q. & DENTON, E. J., 1971. The osmotic effects of electron microscope fixatives	489
BRYAN, G. W., 1971. The effects of heavy metals (other than mercury) on marine and estuarine organisms	489
CHANDLER, W. K. & MEVES, H., 1970. Rate constants associated with changes in sodium conductance in axons perfused with sodium fluoride	489
CHANDLER, W. K. & MEVES, H., 1970. Slow changes in membrane permeability and long-lasting action potentials in axons perfused with fluoride solutions.	490
CORNER, E. D. S. & DAVIES, ANTHONY G., 1971. Plankton as a factor in the nitrogen and phosphorus cycles in the sea	789
DANDO, P. R., 1971. Lactate dehydrogenase polymorphism in the flatfish (Heterosomata)	490
DAS, P. K., WATTS, R. L., WATTS, D. C. & DIMELow, E. J., 1971. Distribution, specificity and function of some proteases, general esterases and cholinesterases from several species of starfish	790
DENTON, E. J., 1971. Examples of the use of active transport of salts and water to give buoyancy in the sea	490
DENTON, E. J. & LAND, M. F., 1971. Mechanism of reflexion in silvery layers of fish and cephalopods	490
GIBBS, P. E., 1971. The polychaete fauna of the Solomon Islands.	491
GIBBS, P. E., STODDART, D. R. & VEVERS, H. G., 1971. Coral reefs and associated communities in the Cook Islands	790

	PAGE
KRESS, A., 1971. Über die Entwicklung der Eikapselvolumina bei verschiedenen Opisthobranchier-Arten (Mollusca, Gastropoda)	790
LYONS, K. M., 1971. Comparative electron microscope studies on the epidermis of the blood living juvenile and gill living adult stages of <i>Amphibdella flavolineata</i> (Monogenea) from the electric ray <i>Torpedo nobiliana</i>	791
MOULDER, D. S. & VARLEY, A. (compilers), 1971. <i>A Bibliography on Marine and Estuarine Oil Pollution</i>	491
PARKE, M., 1971. The production of calcereous elements by benthic algae belonging to the class Haptophyceae (Chrysophyta)	791
PILKINGTON, M. C., 1971. The veliger stage of <i>Hydrobia ulvae</i> (Pennant)	791
ROBERTS, B. L., 1972. Activity on lateral-line sense organs in swimming dogfish	791
ROBERTS, B. L. & RYAN, K. P., 1971. The fine structure of the lateral-line sense organs of dogfish	491
RUSSELL, F. S., 1971. On the female of the medusa <i>Australomedusa baylii</i>	492
SOUTHWARD, A. J. & SOUTHWARD, E. C., 1972. Observations on the role of dissolved organic compounds in the nutrition of benthic invertebrates. II. Uptake by other animals living in the same habitat as pogonophores, and by some littoral Polychaeta	792
SOUTHWARD, E. C., 1971. Pogonophora of the Northwest Atlantic: Nova Scotia to Florida	492
SOUTHWARD, E. C., 1971. Recent researches on the Pogonophora	792

BOOKS RECEIVED

<i>The Use of Biological Literature</i> . Edited by R. T. BOTTLE & H. V. WYATT	792
<i>The Biology of Lampreys</i> . Edited by M. W. HARDISTY & I. C. POTTER	792
<i>Marine Borers, Fungi and Fouling Organisms</i> . Edited by E. B. GARETH JONES & S. K. ELTRINGHAM	792
<i>Experimental Coelenterate Biology</i> . Edited by H. M. LENHOFF, L. MUSCATINE & L. V. DAVIS.	792
<i>Palaeozoic Fishes</i> , 2nd ed. By MOY-THOMAS.	792
<i>Comparative Physiology of Renal Excretion</i> . By J. A. RIEGEL	792
<i>Ecology and Palaeoecology of Marine Environments</i> . By SCHÄFER WILHELM	792

CORRIGENDA

- Page 72, paragraph 2, line 3, *delete* 'Text-fig. 2' *after* 'Pl. IVB'
- Page 176, paragraph 2, line 6, for *Adelaria* read *Adalaria*
- Page 233, line 30, for *Ophiothrix* read *Luida*
- Page 236, References, JONES, N. S., 1940. For pp. 1–34 read pp. 1–21
- Page 256, Table 1, For *Calocaris macandrei* read *Calocaris macandreae*
- Page 273, Appendix I. For *Cochlodesma praeteni* read *Cochlodesma praetenue*
- Page 280, line 13, for *Heterorhaldus* read *Heterorhabdus*
- Page 286, line 4, for (250 mm) read (250 m)
- Page 376, Table 1, line 1, for *Arenostella* read *Arenosetella*
- Page 525, line 12, Abstract, for 'of' read 'at'
- Page 623, Text-fig. 12, Legend, for Barth's ligament; *ch.t.*, *b.l.*, read *b.l.*, Barth's ligament; *ch.t.*,
- Page 757, Discussion, line 5, for *Amphiporous* read *Amphiporus*
- Page 881, line 19, *insert* 'from all four species' *after* 'obtained'
- Page 816, paragraph 1, line 2, for 'of' read 'on'
- Page 889, paragraph 1, line 5, for 'of' read 'on'
- Page 927, Fig. 11, Legend. Incorrect Legend *replace by*: Temperature (°C), 0 m; temperature (°C), 10 m; salinity (‰), 10 m; 6 July 1964.
- Page 1051, line 2, for 'Courtot-Coupez' read 'Courtot-Coupez'

INDEX

For page 106 read 1064

THE MARINE BIOLOGICAL ASSOCIATION OF THE UNITED KINGDOM

THE ASSOCIATION was founded in 1884 to promote accurate researches leading to the advancement of zoological and botanical science and to an increase in our knowledge of the food, life, conditions and habits of British fishes. The work of the Association is controlled by a Council elected annually by its subscribing members.

Professor T. H. Huxley took the chair at the initial meeting held in the rooms of the Royal Society and was elected the first President. Among those present were Sir John Lubbock (afterwards Lord Avebury), Sir Joseph Hooker, Professor H. N. Moseley, Mr G. J. Romanes, and Sir E. Ray Lankester who, after Professor Huxley, was for many years president of the Association. It was decided to build a laboratory at Plymouth, where a rich and varied fauna is found.

The Plymouth Laboratory was opened in June 1888, and, since that date, considerable additions have been made to the buildings, including a library, lecture-hall, and extensive laboratory accommodation with up-to-date equipment. Additional sea-water reservoirs have also been built, and an aquarium, modernized in 1959, opened to the public.

Since its foundation the Association has been supported by subscriptions and donations from private members, universities, learned societies, the Fishmongers' Company and other public bodies. For some time past, however, the main financial support for the work of the Plymouth Laboratory has come from Government funds, and since 1965 the Laboratory has been grant-aided through the Natural Environment Research Council.

The Marine Biological Association, under the direction of its Council, undertakes research in all branches of marine science and the main results are published in this journal. Accounts of the laboratory and aquarium are to be found in Vol. 27 (p. 761), Vol. 39 (p. 391) and Vol. 43 (p. 281), and summaries of the activities and research of the Association are given annually in the Report of the Council in the November issue of the Journal.

The laboratory is open throughout the year and its work is carried out by a fully qualified research staff under the supervision of the Director. The names of the members of the staff will be found on the inner page of the front cover. Accommodation is available for British and foreign scientific workers who wish to carry out independent research in all branches of marine science. Arrangements are made for courses for advanced students, and marine animals and plants are supplied to educational institutions.

Work at sea is undertaken by three research vessels and by a motor boat, and these also collect the specimens required in the laboratory.

TERMS OF MEMBERSHIP

	£
Annual Members, receiving the Journal . . . per annum	3.00
Annual Members, without the Journal . . . per annum	1.05
Junior Members, receiving the Journal . . . per annum	1.05
Life Members Composition fee	45.00
Founders	100.00
Governors	50.000

Members of the Association have the following rights and privileges: they elect annually the Officers and Council; they are entitled to receive the Journal of the Association at a reduced rate; they are admitted to view the laboratory at Plymouth; they have the first claim to rent a place in the laboratory for research, with use of tanks, boats, etc; they have the privilege of occupying a table for one week in each year free of charge; and they have access to the books in the library at Plymouth during working hours.

The Commissioners of Inland Revenue have approved the Association for the purposes of Section 16, Finance Act, 1958, and that the whole of the annual subscription paid by a member who qualifies for relief under the section will be allowable as a deduction from his emoluments assessable to income tax under Schedule E.

All correspondence should be addressed to the Director, The Laboratory, Citadel Hill, Plymouth, PL1 2PB.

CONTENTS

	PAGE
BROWN, C. M., MACDONALD-BROWN, DEBORAH S. and STANLEY, S. O. Inorganic nitrogen metabolism in marine bacteria: Nitrogen assimilation in some marine pseudomonads	793
COOK, P. A. and GABBOTT, P. A. Seasonal changes in the biochemical composition of the adult barnacle, <i>Balanus balanoides</i> , and the possible relationships between biochemical composition and cold-tolerance	805
GARDNER, DORIS and RILEY, J. P. The component fatty acids of the lipids of some species of marine and freshwater molluscs	827
GARDNER, DORIS and RILEY, J. P. Seasonal variations in the component fatty acid distributions of the lipids of <i>Balanus balanoides</i>	839
CORNER, E. D. S., HEAD, R. N. and KILVINGTON, C. C. On the nutrition and metabolism of zooplankton. VIII. The grazing of <i>Biddulphia</i> cells by <i>Calanus helgolandicus</i>	847
DAVENPORT, JOHN. Volume changes shown by some littoral anomuran crustacea	863
HERRING, PETER J. Bioluminescence of searsid fishes	879
DENTON, E. J. and SAUNDERS, R. L. On the organization of silvery layers in the skin of the Atlantic salmon (<i>Salmo salar</i>) during smoltification and on the regeneration of these layers under abnormal lighting conditions	889
DENTON, E. J. and SAUNDERS, R. L. Osmotic properties of the epithelial layers covering scales of herring (<i>Clupea harengus</i>) and Atlantic salmon (<i>Salmo salar</i>)	899
WEBB, J. E. and THEODOR, J. L. Wave-induced circulation in submerged sands	903
ARMSTRONG, F. A. J., BUTLER, E. I. and BOALCH, G. T. Hydrographic and nutrient chemistry surveys in the western English channel during 1963 and 1964	915
SOUTHWARD, A. J. and BUTLER, E. I. A note on further changes of sea temperature in the Plymouth area	931
REID, PHILIP C. Dinoflagellate cyst distribution around the British Isles	939
WILLIAMS, R. B. Notes on the history and invertebrate fauna of a poikilohaline lagoon in Norfolk	945
JONES, A. Studies on egg development and larval rearing of turbot, <i>Scophthalmus maximus</i> L., and brill, <i>Scophthalmus rhombus</i> L., in the laboratory	965
SOUTHWARD, A. J. and DEMIR, NECLÁ. The abundance and distribution of eggs and larvae of some teleost fishes off Plymouth in 1969 and 1970. I. Methods and hydrography	987
DEMIR, NECLÁ. The abundance and distribution of the eggs and larvae of some teleost fishes off Plymouth in 1969 and 1970. II. The postlarvae of <i>Callionymus</i>	997
FISH, J. D. The breeding cycle and growth of open coast and estuarine populations of <i>Littorina littorea</i>	1011
ROE, H. S. J. The vertical distribution and diurnal migrations of calanoid copepods collected on the Sond cruise, 1965. IV. Systematic account of families Lucicutiidae to Candaciidae. The relative abundance of the numerically most important genera	1021
TREGUER, PAUL, LE CORRE, PIERRE and COURTOT, PIERRE. A method for determination of the total dissolved free fatty-acid content of sea water	1045
JENNINGS, K. N. An example of hybridization between <i>Pagurus bernhardus</i> and <i>Pagurus pubescens</i> [Crustacea: Anomura]	1057
REPORT OF THE COUNCIL FOR 1971-72	1067
BALANCE SHEET 1971-72	1103

© Copyright by the Marine Biological Association of the U.K.

The subscription price of the Journal to non-members of the Association is £22.00 net a volume of four parts, post free, or \$70.00 in U.S.A., payable in advance. Subscriptions may be sent to any bookseller or to the Cambridge University Press, and in U.S.A. to the Cambridge University Press American Branch.

CAMBRIDGE UNIVERSITY PRESS

BENTLEY HOUSE, 200 EUSTON ROAD, LONDON NW1 2DB

AMERICAN BRANCH: 32 EAST 57TH STREET, NEW YORK, N.Y.10022

Printed in Great Britain at the University Printing House, Cambridge