



Article

Cite this article: Liu A, Wang R, Yang Y, Wang L, Li X, Li Y, Talalay P (2021). Optimization of hot-water ice-coring drills. *Annals of Glaciology* 62(84), 67–74. <https://doi.org/10.1017/aog.2020.63>

Received: 14 December 2019
Revised: 30 July 2020
Accepted: 31 July 2020
First published online: 25 August 2020

Keywords:

Ice-core drilling; hot-water ice drilling; ice core quality

Author for correspondence:

Pavel Talalay,
E-mail: ptalalay@yahoo.com

Optimization of hot-water ice-coring drills

An Liu, Rusheng Wang, Yang Yang, Liang Wang, Xiao Li, Yazhou Li
and Pavel Talalay 

Polar Research Center, Jilin University, No. 938, Ximinzhu Str., Changchun City 130021, China

Abstract

Hot-water ice-coring drills are often used to recover ice core samples from desirable depths in conjunction with full-scale hot-water drilling systems. However, the recovered cores exhibit varying qualities. The coring performance of a hot-water ice-coring drill depends significantly on the structure of the coring drill head (nozzle angle, diameter and number). To discover the most significant factor affecting ice-coring performance, nine types of drill heads were designed and tested in this study according to the orthogonal test design. Results indicated that the nozzle angle is the most significant factor that affects the coring quality and the optimal angle is $\sim 15^\circ$. The number of nozzles is the second most important factor; a large number assists in obtaining ice cores of high quality. The optimal nozzle configuration to recover good quality cores are the following: the nozzle diameter, number of nozzles and nozzle angle are 1 mm, 60 nozzles and 15° , respectively, with the maximum diameter and 2 mm, 60 nozzles and 15° , respectively, with the maximum length.

1. Introduction

Hot-water ice drill systems are actively used in polar science for the observation of ocean cavities under ice shelves; retrieval of sub-ice seabed samples; study of internal ice structures, video imaging and temperature logging; measurements of deformation within ice; determination of basal sliding velocity; clean access to subglacial lakes; and many other scientific objectives (Tsutaki and Sugiyama, 2009; Makinson and Anker, 2014; Rack and others, 2014). Hot-water drill systems appear simple. During the initial stage of drilling operations, a certain volume of water should be prepared to begin drilling. Water is pumped at high pressure through a drill hose to a nozzle that jets hot water to melt ice. The hose and nozzle are lowered slowly to form a straight hole because gravity is used as the steering mechanism. The water from the nozzle uses the melted hole as the return conduit. An additional pump (either submersible or at the surface) is, in most cases, installed to pump water to a surface water tank. This water is then reused by the hot-water drill.

Hot-water drilling is a rapid method for drilling boreholes in glaciers. The rate of penetration (ROP) of the fastest system, designed by the Geological Survey of Greenland for bedrock topography studies near Jakobshavn, West Greenland, reached 300 m h^{-1} in firn and $125\text{--}200 \text{ m h}^{-1}$ in clear ice (Olesen, 1989). Typically, hot-water drilling systems are used to create access holes. However, hot-water ice-coring drills can also be used to recover ice core samples from desirable depths by drilling with annular nozzles. In conjunction with a hot-water drill, they can provide a series of ice cores for site-selection studies and for the determination of ice properties when complete cores are not essential. Because borehole drilling and ice coring are performed with only hot water, contamination with the other fluids used for mechanical drilling cannot occur and ice-cutting chips are not produced, thereby simplifying the core-handling procedures.

The first hot-water coring tools were investigated simultaneously using the hot-water drill of the Thayer School of Engineering at Dartmouth, USA, and several coring technologies were tested during 1978–1979 season in Antarctica, where varying degrees of success were achieved (Browning and others, 1979). In the early 1990s, Caltech designed a hot-water ice-coring drill and used it in combination with a full-scale hot-water drilling system (Engelhardt and others, 2000). The drill comprised a cutting drill head (Fig. 1), four thermally insulated 6-mm stainless-steel tubes along the outside of a Lexan core barrel and a back-drilling head. The cutting drill head had 40 jets, each measuring 1 mm in diameter, on an annulus of diameter 108 mm. The axes of the jets were tilted outward at a 12° angle from the vertical axis of the drill. In 1993/94 season, the hot-water ice-coring drill was used successfully to retrieve 18 ice cores of up to 2 m long and ~ 70 mm in diameter from the depths of 300 to 950 m in the heavily crevassed chaotic shear zone between the Whillans Ice Stream and the Unicorn, West Antarctica.

Over the last two decades, a significant number of cores have been drilled using different versions of the Caltech ice-coring drill in Iceland (Gaidos and others, 2004) and at several Antarctic sites, including the Siple Dome (Gow and Engelhardt, 2000), Ronne Ice Shelf (Nicholls and others, 2012), Rutford Ice Stream (Smith, 2005), Amery Ice Shelf (Craven and others, 2002, 2009; Treverrow and others, 2010) and Ross Ice Shelf (Rack, 2016). Although the coring drill head and core barrel differ among these modified versions, the drills' design has primarily adhered to the prototype design.

© The Author(s), 2020. Published by Cambridge University Press. This is an Open Access article, distributed under the terms of the Creative Commons Attribution licence (<http://creativecommons.org/licenses/by/4.0/>), which permits unrestricted re-use, distribution, and reproduction in any medium, provided the original work is properly cited.

cambridge.org/aog

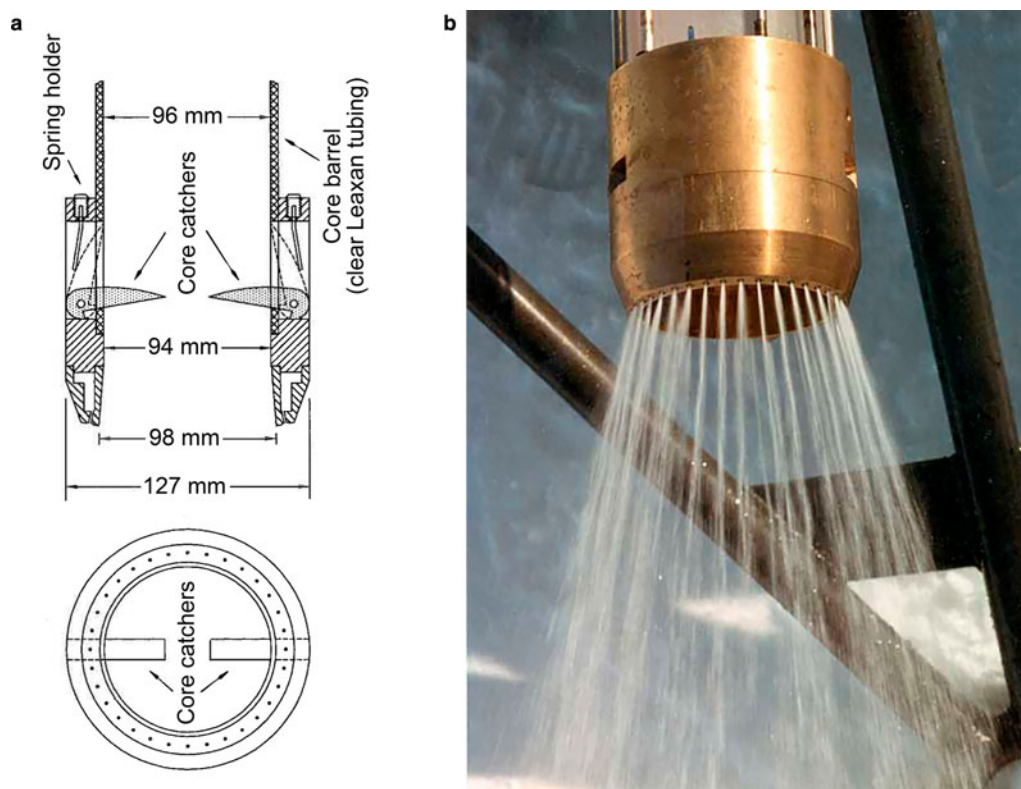


Fig. 1. Caltech hot-water cutting drill head: (a) schematic drawing (Engelhardt and others, 2000); (b) during testing (Credit: K. Makinson).

The major drawback of hot-water ice coring using Caltech's drill is the variations in quality of the recovered cores. For example, the nominal core diameter of the Australian version of the Caltech corer was 100 mm, but the diameter of the recovered cores at the Amery Ice Shelf was reduced to ~60 mm in some sections of the cores because a mismatch occurred between the vertical velocity of the coring attachment and the water temperature of the drill system (Treverrow and others, 2010). At that time, cores varied from well-formed cylindrical samples that were over 1 m long to samples that were 0.2 m in length with tapered ends. Occasionally, the diameters of the cores were too small to be caught by core catcher and no cores were retrieved (Vogel and others, 2005; Nicholls and others, 2012).

The most critical part of the hot-water ice coring drill is the annular drill head through which water jets to the bottom of the hole and forms the core. To overcome the limitations of hot-water ice coring, the annular drill head must be optimized. The effect of the drill head structure (diameter of water nozzles; their number and angle from the vertical axis of the drill) on the quality of ice cores (length and maximal diameter) and ROP remains unclear. Here we describe the results of the experimental investigations of a hot-water ice coring drill with nine drill heads according to the orthogonal test design method. Consequently, the optimal design of the drill heads that yield the highest quality ice cores is determined.

2. Orthogonal test design

The orthogonal test design was used to investigate the effects of various nozzle structures (angle, number and diameter) on the coring performance. It is a type of design method for studying multivariate and multilevel factors, in which tests are conducted by selecting a suitable number of representative test cases that exhibit evenly dispersed and neat comparable characteristics (Park, 2007).

Table 1. Factors and levels based on orthogonal design

Levels	Factors		
	Diameter (mm)	Quantity	Angle (°)
1	1	24	0
2	1.5	36	15
3	2	60	30

Table 2. Orthogonal test design table L_9 (3^4)

Number	Factors			Actual levels of each factor		
	A	B	C	A	B	C
1	1	1	1	1	24	0
2	1	2	2	1	36	15
3	1	3	3	1	60	30
4	2	1	2	1.5	24	15
5	2	2	3	1.5	36	30
6	2	3	1	1.5	60	0
7	3	1	3	2	24	30
8	3	2	1	2	36	0
9	3	3	2	2	60	15

The test design is based on the orthogonal table. Factors in the table are parameters affecting the performance, while levels are the typical values of the factors. In this study, the nozzle diameter, number and angle were set as the factors and their corresponding levels are as shown in Table 1. The levels were selected by analyzing the design of different versions of the Caltech hot-water ice-coring drill.

Consequently, the normalized orthogonal table L_9 (3^4) with four factors and three levels was designed. The factors of nozzle diameter, number and angle are marked with the capital letters A, B and C, respectively (Table 2).

A prototype of the hot-water ice-coring drill (Fig. 2) with replaceable drill heads and nine drill heads of the same size but

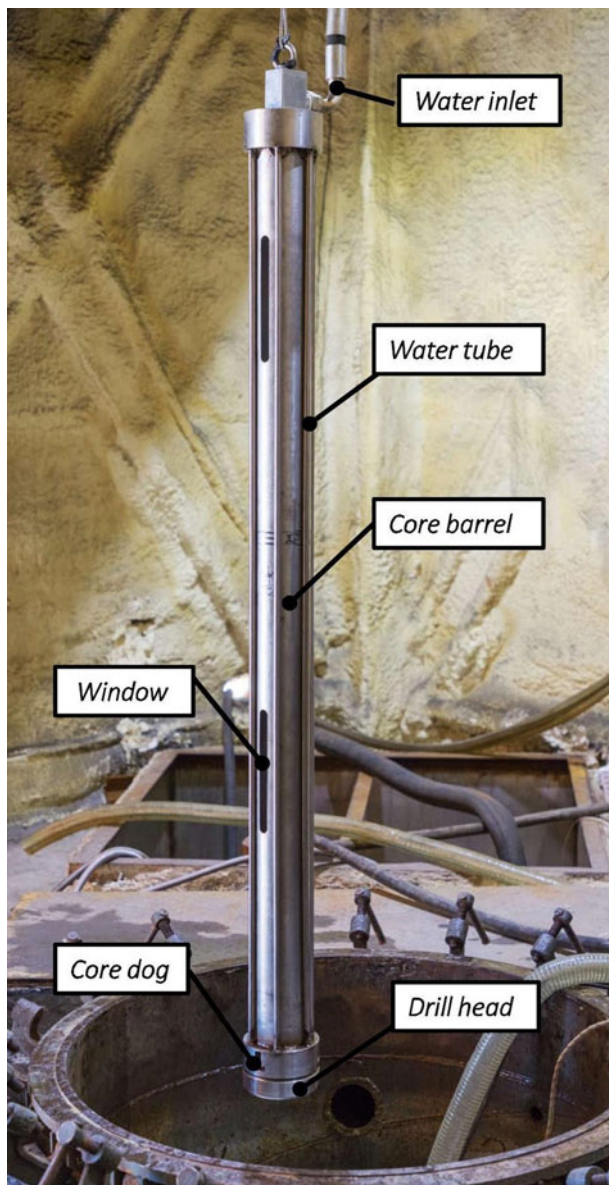


Fig. 2. Hot-water ice-coring drill during laboratory tests.

with unique nozzle structures was designed and processed (Fig. 3). The length of the drill was 1.8 m and its weight was 24 kg. The inner diameter/outer diameter ratio of the ice-core drill head was 96/140 mm. The drill heads were connected to the drill by screw joint, and two O-rings were used to seal the connection (Fig. 4). Hot water was supplied through six 10-mm diameter tubes fixed to the outer surface of the core barrel.

3. Testing procedure

Tests were performed in an ice drill testing facility that allows the testing of numerous mechanical and thermal ice drills throughout the year (Wang and others, 2018). The facility comprises an ice well (12.5 m deep and 1 m diameter) with the minimum ice temperature of -30°C . The hot-water ice-coring drill was suspended over the ice well using the wire rope of the rotary drilling platform; the wire rope was passed through the pulley and connected to the winch, with a variable speed drive to control the lowering rate of the drill.

Water in the drilling fluid pit was heated by a heater and subsequently pumped through the hose by a high-pressure pump into the drill, on which the annular drill head sprayed water out

and melted ice for penetration. When the drilling was completed, the submersible pump in the ice collected water in the water tank; subsequently, the water was pumped into the drilling fluid pit and heated again for the next drilling (Fig. 5).

Several types of sensors were installed, including a flow meter at the outlet of the high-pressure pump, a load sensor underneath the pulley and a temperature sensor in the drilling fluid pit (Table 3). The load sensor was used to monitor if the drill had touched the bottom and the temperature sensor was used to measure the water temperature of the heated water. The downward speed of the drill was adjusted by controlling the winch speed to maintain a balanced state. Drilling penetration was measured by the encoder installed on one side of the pulley.

The drill heads were numbered 1 to 9, as shown in Table 2. The flow rate of intermediate hot-water ice drilling systems, designed for drilling to depths up to 1000–1500 m, are typically from $45\text{--}90\text{ L min}^{-1}$ (Talalay, 2020); thus, three water flow rates were selected, i.e., 40, 70 and 100 L min^{-1} . Holes were drilled to the depth of 1 m at a constant water temperature of $50 \pm 3^{\circ}\text{C}$ (Fig. 6). This temperature was selected from the experimental observations of Liu and others (2019).

After each test, we removed ice cores from the core barrel and measured the maximum/minimal diameter and length of the core using a caliper and a ruler. We discovered that the ice cores were primarily intact cylinders and that the diameters of the ice cores were almost uniform, with small fluctuations between the maximum and minimum diameters (typically 8–10%; up to 30% in certain cases) (Fig. 7). Therefore, the maximum diameter was selected to evaluate the quality of the ice cores. The average penetration rate was calculated using the drilling depth and drilling time.

4. Results and Discussion

A total of 27 testing runs were performed according to the orthogonal test design method (Supplementary material, Table S1). To evaluate the quality of the ice cores, we used a coring ratio – the ratio between the maximum diameter of the ice core and the inner diameter of the core barrel (96 mm) (Fig. 8). The coring ratios are primarily between 0.593 and 0.885 except for head #8, which exhibits ratios exceeding 0.521; this indicates that most drill heads used in the tests can retrieve ice cores of relatively good quality.

The orthogonal test design method provides several types of analysis methods including intuitive, range and trend analysis, which facilitate in understanding the most significant factor of the nozzle structure.

4.1. Intuitive analysis of testing results

When the flow rate is 40 L min^{-1} , drill heads #2, 3 and 4 can retrieve ice cores of maximum diameter exceeding 80 mm. When the flow rate is 70 L min^{-1} , drill heads #2 and #9 can obtain ice cores of maximum diameter 76 mm and length exceeding 0.9 m. When the flow rate is 100 L min^{-1} , drill heads #2 and #9 can obtain ice cores of diameter exceeding 84 mm and a length exceeding 0.93 m. Considering the three tested flow rates, drill head #2 can be considered as the optimal option and the best parameter combination is $A_1B_2C_2$. This means that the drill with a nozzle diameter, number and angle of 1 mm, 36 and 15° , respectively, can produce cores of the highest quality.

4.2. Range analysis of testing results

The range analysis of testing results with flow rates of 40, 70 and 100 L min^{-1} are presented in the Supplementary material (Tables



Fig. 3. Interchangeable drill heads; the numbers inside indicate diameter of the nozzles, the number of nozzles and angle from the vertical axis of the drill.

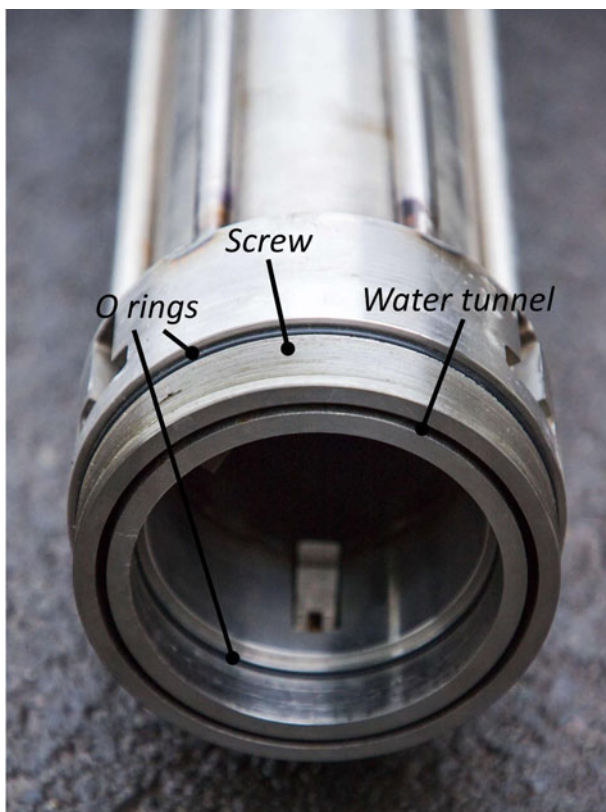


Fig. 4. Screw connection at the lower part of the drill.

S2, S3 and S4, respectively). To analyze the effect of different factors, we used the following parameters: K_i , the sum of the 3 testing levels for a single factor with level i ; \bar{K}_i , the average value of K_i ; R , the difference in value between the maximum and minimum values of \bar{K}_i (a larger R value indicates more significant effects).

In most cases, the factor C (nozzle angle) is always the first in the ranking of R , indicating the maximum effect on the coring performance. The values of R in factors A (nozzle diameter) and B (number of nozzles) are smaller and close to each other, however, in most cases, the ranking is $R_B > R_A$. Thus, the number of nozzles is the second most important factor for ice coring. However, the nozzle diameter has a greater effect on the maximum diameter of the ice cores.

4.3. Trend analysis of testing results

Using the value of \bar{K}_i , trend analysis was performed to analyze the internal connection between the selected levels and the results and to investigate possible better levels that were not selected in the tests. The method uses a tendency chart, in which the abscissa is the level of factors and the ordinate is the corresponding testing results. All values of \bar{K}_i are plotted on the charts (Fig. 9). The trend tendencies of all curves are highly similar and can consequently verify the authenticity of the tendency.

When the nozzle diameter was increased from 1 to 2 mm, the length of the retrieved ice cores increased as well, while the maximum diameter of the ice cores and ROP decreased. When the number of nozzles was increased from 24 to 60, the diameter and length of the ice cores increased to a certain extent except for the ROP, which decreased slightly. Thus, to retrieve high-quality cores, the head with a large number of nozzles must be

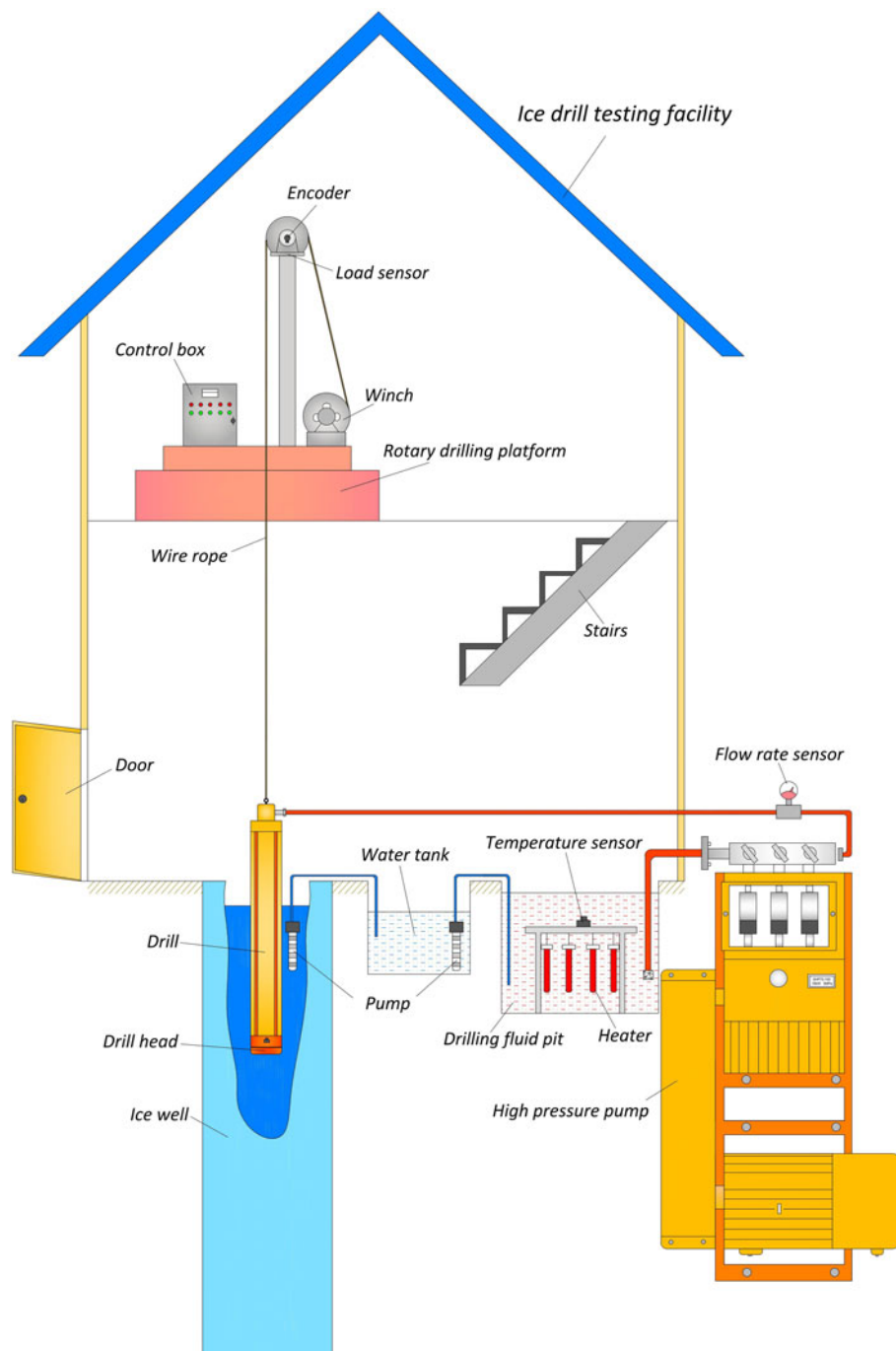


Fig. 5. Schematic of hot-water ice-coring drilling testing.

Table 3. Main parameters of the equipment and sensors used

Equipment and sensors	Model	Main parameters
High-pressure pump	SHP75-100	Power 18 kW; Max pressure 5 MPa; Max flow rate 160 L min ⁻¹ ; Weight 1100 kg
Flow sensor	LWGB-DN25	16-160 L min ⁻¹
Temperature sensor	HSTL-103	0-100°C
Load sensor	MIK-LCLY	Max. load 2 kN
Encode	E6B2-CWZ6C	Resolution 600 ppr
Heater		Power 4 × 10 kW
Submersible pump	QDX2	Pump head 15 m; Flow rate 10 m ³ h ⁻¹ ; Power 0.75 kW

used. The diameter and length of the ice cores first increased rapidly with the nozzle angle and then decreased to a value that was still higher than that obtained with a 0° nozzle angle. The best-quality cores were obtained using heads that had a nozzle angle of 15°.

5. Conclusions

In this study, various drill heads of the hot-water ice-coring drill with different nozzle diameters, numbers and angles were designed and tested based on the orthogonal test design method. The following conclusions can be derived from the study:

- (1) Intuitive analysis of testing results indicated that the following parameters of the nozzle yielded good-quality ice cores: nozzle diameter of 1 mm, 36 nozzles and nozzle angle of 15°.

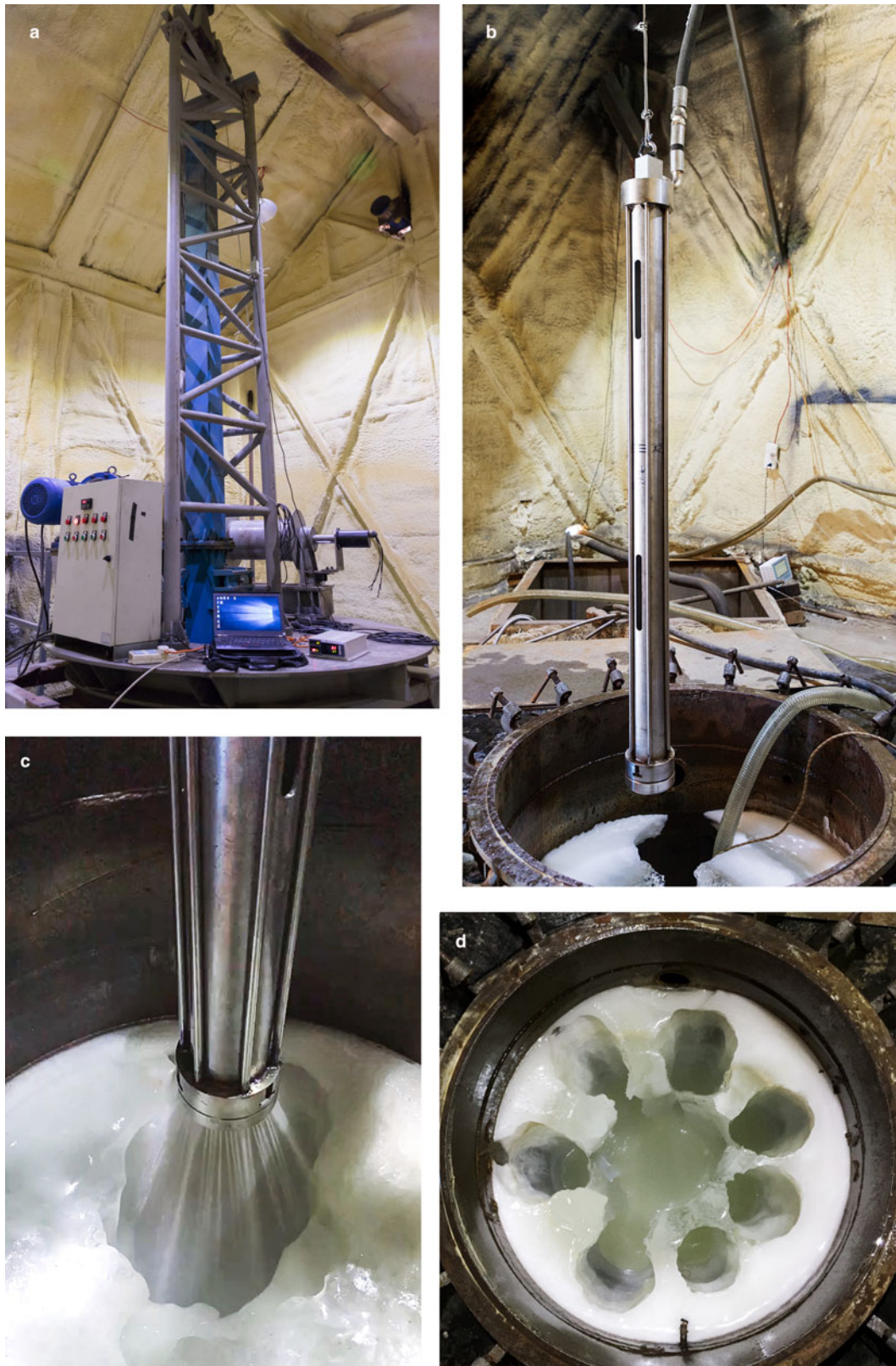


Fig. 6. Overview of the hot-water ice-coring drilling tests: (a) measuring and control system; (b) drill suspended over the ice well; (c) drilling; and (d) ice well after tests.

- (2) Nozzle angle was the most significant factor affecting the coring performance and it must be $\sim 15^\circ$ to obtain high-quality ice cores.
- (3) The number of nozzles was the second most important factor and a large number yielded better quality ice cores.
- (4) The number of nozzles had a greater effect on the length of the ice core and the nozzle diameter on the maximum diameter of the ice core.
- (5) The following nozzle parameters yielded the maximum diameter of the ice core: nozzle diameter of 1 mm, 60 nozzles and nozzle angle of 15° , whereas those resulting in the maximum length of the ice core were nozzle diameter of 2 mm, 60 nozzles and nozzle angle of 15° .

The experimental results could not provide a universal model for every nozzle diameter/number/angle; however, it is still a



Fig. 7. Ice cores retrieved by the hot-water ice-coring drill.

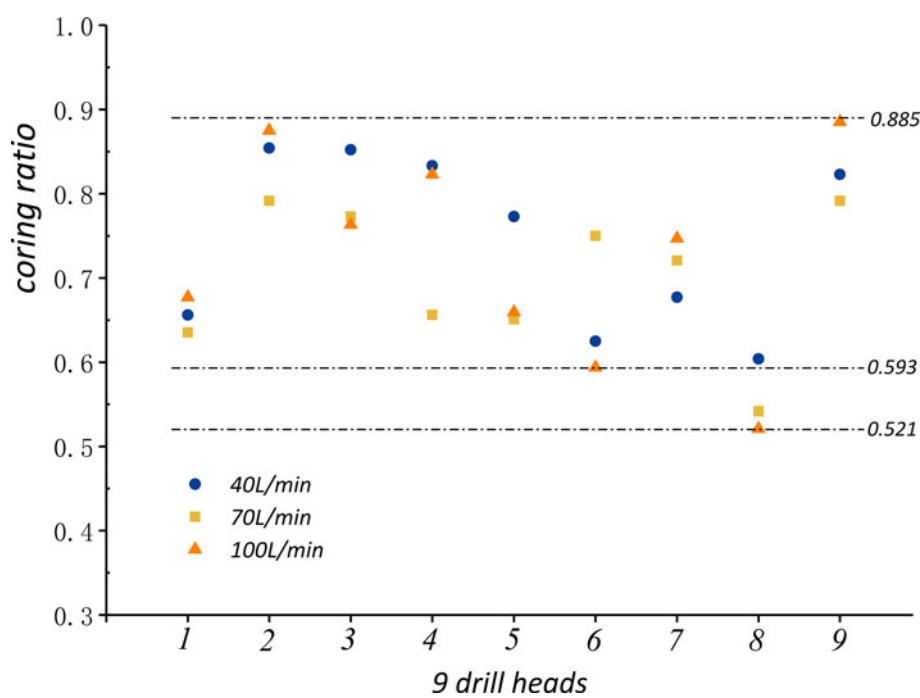


Fig. 8. Coring ratio distributions of nine drill heads with different flow rates.

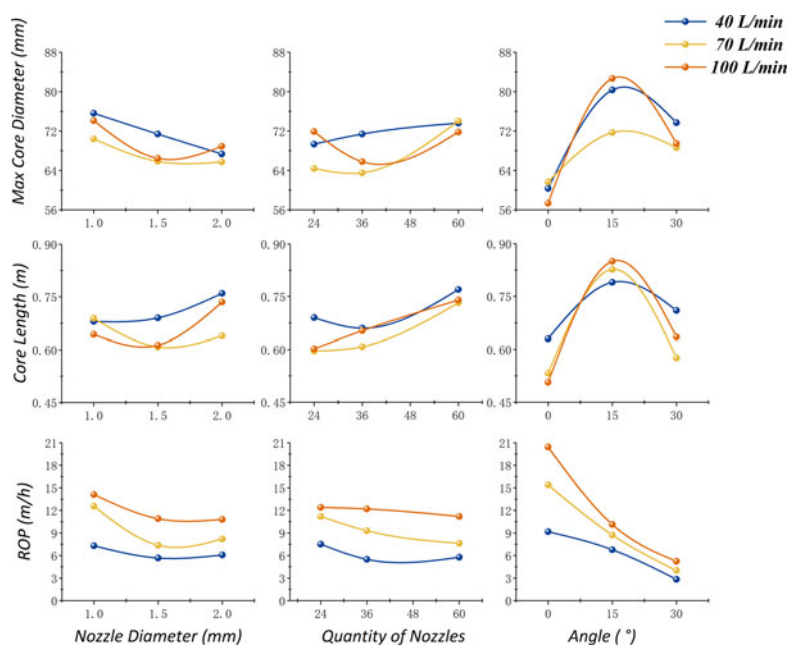


Fig. 9. Effects of various factors and levels with different flow rates on coring performance.

prominent reference for the prediction of ice core quality drilled in glaciers and ice sheets using hot-water drills.

Supplementary material. The supplementary material for this article can be found at <https://doi.org/10.1017/aog.2020.63>.

Acknowledgement. This research was supported by the program for the Jilin University Science and Technology Innovative Research Team (Project No. 2017TD-24). We are grateful to the members of our research team for their help in design and testing. We thank Scientific Editor J. Schwander (University of Bern, Switzerland), A. Pyne (Victoria University of Wellington, New Zealand) and anonymous reviewer for fruitful suggestions, useful comments and editing.

References

- Browning JA, Bigl RA and Sommerville DA** (1979) Hot-water drilling and coring at site J-9, Ross Ice Shelf. *Antarctic Journal of the United States* **14** (5), 60–61.
- Craven M, Allison I, Fricker HA and Warner R** (2009) Properties of a marine ice layer under the Amery Ice Shelf, East Antarctica. *Journal of Glaciology* **55**(192), 717–728.
- Craven M, Elcheikh A, Brand R and Jones N** (2002) Hot water drilling on the Amery Ice Shelf – the AMISOR project. *Memoirs of National Institute of Polar Research* **56**, 217–225.
- Engelhardt H, Kamb B and Bolsey R** (2000) A hot-water ice-coring drill. *Journal of Glaciology* **46**(153), 341–345.
- Gaidos EJ and 7 others** (2004) A viable microbial community in a subglacial volcanic crater lake, Iceland. *Astrobiology* **4**(3), 327–344.
- Gow AJ and Engelhardt H** (2000) Preliminary analysis of ice cores from Siple Dome, West Antarctica. In: Proceedings of international symposium on physics of ice core records, 14–17 Sept 1998, Shikotsukohan, Hokkaido, Japan. Hokkaido University Press, Sapporo, 63–82.
- Liu A and 6 others** (2019) Test-bed performance of an ice-coring drill used with a hot water drilling system. *Journal of Marine Science and Engineering* **7**, 234.
- Makinson K and Anker PGD** (2014) The BAS ice-shelf hot-water drill: design, methods and tools. *Annals of Glaciology* **55**(68), 44–52.
- Nicholls KW, Corr HFJ, Makinson K and Pudsey CJ** (2012) Rock debris in an Antarctic ice shelf. *Annals of Glaciology* **53**(60), 235–240.
- Olesen OB** (1989) A Danish contribution to the family of hot-water glacier drills. In: Rado C, Beaudoin D (eds) Ice core drilling. Proceedings of the third international workshop on ice drilling technology, Grenoble, France, 10–14 Oct. 1988. Laboratoire de Glaciologie et Geophysique de l'Environnement, Grenoble, 140–148.
- Park GJ** (2007) *Analytic Methods for Design Practice*. Germany: Springer Science & Business Media.
- Rack FR** (2016) Enabling clean access into subglacial lake Whillans: development and use of the WISRD hot water drill system. *Philosophical Transactions of the Royal Society A* **374**, 20140305.
- Rack FR and 8 others** (2014) Developing a hot-water drill system for the WISSARD project: 1. Basic drill system components and design. *Annals of Glaciology* **55**(68), 285–297.
- Smith AM** (2005) RABID: Basal conditions on Rutford Ice Stream, West Antarctica: Hot-water drilling and down-hole instrumentation. British Antarctic Survey Field Report, R/2004/S3, BAS Archives ref.: AD6/2R/2004/S3.
- Talalay PG** (2020) *Thermal Ice Drilling Technology*. Singapore: Springer Singapore.
- Treverrow A, Warner RC and Budd WF** (2010) Meteoric and marine ice crystal orientation fabrics from the Amery Ice Shelf, East Antarctica. *Journal of Glaciology* **56**(199), 877–890.
- Tsutaki S and Sugiyama S** (2009) Development of a hot water drilling system for subglacial and englacial measurements. *Bulletin of Glaciological Research* **27**, 7–14.
- Vogel SW and 7 others** (2005) Subglacial conditions during and after stoppage of an Antarctic Ice Stream: is reactivation imminent? *Geophysical Research Letters* **32**(14), L14502–4.
- Wang R and 5 others** (2018) Ice drill testing facility. *Cold Regions Science and Technology* **145**, 151–159.