

Death rate from ischaemic heart disease in Western Australian psychiatric patients 1980–1998

DAVID M. LAWRENCE, CASHEL D'ARCY J. HOLMAN, ASSEN V. JABLENSKY and MICHAEL S. T. HOBBS

Background People with mental illness suffer excess mortality due to physical illnesses.

Aims To investigate the association between mental illness and ischaemic heart disease (IHD) hospital admissions, revascularisation procedures and deaths.

Method A population-based record-linkage study of 210 129 users of mental health services in Western Australia during 1980–1998. IHD mortality rates, hospital admission rates and rates of revascularisation procedures were compared with those of the general population.

Results IHD (not suicide) was the major cause of excess mortality in psychiatric patients. In contrast to the rate in the general population, the IHD mortality rate in psychiatric patients did not diminish over time. There was little difference in hospital admission rates for IHD between psychiatric patients and the general community, but much lower rates of revascularisation procedures with psychiatric patients, particularly in people with psychoses.

Conclusions People with mental illness do not receive an equitable level of intervention for IHD. More attention to their general medical care is needed.

Declaration of interest None. Study funded by National Health and Medical Research Council of Australia. Setting up of Western Australian (WA) Health Services Research Linked Database funded by Lotteries Commission.

People with mental disorders suffer high rates of mortality due to physical illnesses, including ischaemic heart disease (IHD) (Harris & Barraclough, 1998). IHD mortality has been in steady decline in Australia over the past 20 years, owing to the success of public health campaigns aimed at reducing risk factors, and the introduction of new treatments (Beaglehole *et al*, 1997). Have people with mental illness also benefited from these interventions and participated in the favourable trends? We examined this question in a large population-based record-linkage study. We used the Western Australian Health Services Research Linked Database (WA Linked Database) to measure mortality rates, hospital admission rates and revascularisation procedure rates in a geographically defined population of people with diagnosed mental illness, and to compare these rates with those in the general population.

METHOD

Data sources and case selection

The WA Linked Database was used as the source of data. It links together records of all private and public hospital separations (patient discharges, transfers to another facility or deaths), contacts with state mental health services (including public out-patient clinics), death registrations and several other sets of health data for the entire state of Western Australia (Holman *et al*, 1999). Three files were extracted from the WA Linked Database for this analysis. The first file contained all records for any person who had been in contact with mental health services in Western Australia during 1966–1998. The second file contained all records for any person admitted to an acute hospital with selected cardiovascular conditions during 1980–1998. The selection was based on primary diagnoses, which were coded using ICD-9 (World Health Organization,

1977a). The following conditions were selected: IHD (ICD-9 410–414), hypertensive disease (401–405), cerebrovascular disease (430–438) or peripheral vascular disease (443). The third file contained all records for any person admitted to a revascularisation procedure in Western Australia during 1980–1998. Procedures were classified using the International Classification of Procedures in Medicine (ICPM) (World Health Organization, 1977b) until 1987, and using the clinical modification of the Ninth Revision of the International Classification of Diseases (ICD-9-CM) (National Coding Centre, 1996) from 1988 onwards. Procedures selected were removal of coronary artery obstruction (ICPM 5-363; ICD-9-CM 36.0) and coronary artery bypass graft or arterial implant (ICPM 5-361, 5-362; ICD-9-CM 36.1–36.9). Each file provided data on acute hospital admissions, death records, psychiatric in-patient movements and contacts with community-based psychiatric services.

Classification of mental disorders

Principal psychiatric diagnoses were assigned from the records of contacts with mental health services. The Mental Health Information System (MHIS) is a core component of the WA Linked Database. The MHIS records separate diagnoses for each contact with mental health services using ICD-9. The final diagnosis was extracted for each episode of care. The latest informative psychiatric diagnosis across the episodes was then assigned as the principal psychiatric diagnosis for each patient according to the following hierarchy of diagnoses:

- (a) ICD-9 290, 293–296: dementia, organic psychotic conditions, schizophrenia and affective psychosis;
- (b) ICD-9 291–292, 297–305, 313–315: alcohol and drug psychoses, paranoid states, other non-organic psychoses, neurotic disorders, personality disorders, sexual deviations, alcohol and drug dependence, childhood disorders;
- (c) ICD-9 306–312, 317–319: adjustment reaction, reaction to stress, depressive disorders not elsewhere classified, conduct disorders not elsewhere classified, special syndromes not elsewhere classified, mental retardation;
- (d) non-chapter 5 (Mental Disorders) diagnoses.

For instance, if the last episode of care recorded a diagnosis of alcohol dependence, but the previous episode recorded schizophrenia, then a diagnosis of schizophrenia was assigned. The purpose of this strategy was to give precedence to the more severe disorders, and to allow for certain conditions such as alcohol or drug dependence to be considered as a potential comorbidity of a psychotic condition. More than 70% of people on the MHIS had only one diagnosis recorded (at the level used in this study). Of the remaining cases there were three main groups: those who had a less-specific diagnosis (such as depressive disorder not elsewhere classified) together with a more-specific diagnosis (such as neurotic depression); those who had an alcohol/drug condition as well as a psychotic condition; and those for whom the specific type of psychosis had been refined after further observation (particularly between schizophrenia and affective psychosis). The hierarchical approach was designed to select the most appropriate diagnosis in these cases.

Statistical methods

Age-standardised rates of mortality from IHD were calculated for the general population, and for people who had contact with mental health services. Direct standardisation was used (Rothman, 1986), with the Western Australian population used as the standard (Australian Bureau of Statistics, 1980–1998). For population rates, the denominators were calculated from estimated resident population figures published by the Australian Bureau of Statistics (Australian Bureau of Statistics, 1980–1998). Among users of mental health services, calculation of mortality rates was restricted to 165 699 patients whose first contact with mental health services occurred during 1980–1998, excluding 44 430 patients with

previous contact. This was done to avoid the results being biased by the healthy-survivor effect. The start of follow-up was the date of each patient's first contact with mental health services. They were then censored either at death or on 31 December 1998. Rates were calculated by principal psychiatric diagnosis and gender. Rates were also calculated separately for each year in the study period. Rate ratios were calculated comparing the cohort of users of mental health services with the entire Western Australian population. For each rate and rate ratio, 95% confidence intervals were calculated.

Rates of first hospital admission and rates of vascularisation procedures were calculated in a similar fashion. The only difference was that the full cohort of 210 129 patients was used, as there was no evidence of a healthy-survivor bias. Rates were also calculated restricted to the inception cohort but, as there was no evidence of any differences, results shown here are from the analysis of the full cohort (which has greater statistical power). Rates were restricted to the first admission for each patient during 1980–1998, and follow-up began on 1 January 1980 for patients whose first contact with mental health services occurred before 1980. When examining individual heart conditions and procedures, calculations were made separately for each condition and individual patients could contribute to more than one condition if they had separate admissions for separate conditions. Patients were censored at time of admission or procedure, or on 31 December 1998.

Poisson regression was used to analyse trends in IHD mortality. Poisson regression models the relationship between counts of events (in this case, deaths) and a set of explanatory variables (in this case, age and year). Separate models were run for each gender for both the cohort of users of mental health services and the total Western Australian population.

RESULTS

There were 44 767 deaths due to IHD during 1980–1998. Of these deaths, 3796 occurred in users of mental health services. The standardised mortality rate was almost twice as high in users of mental health services than in the overall population (Table 1). The majority of deaths (59%) were ascribed to acute myocardial infarction (ICD-9 410.9); however, the mortality rate ratio was higher for other IHD (most of these deaths were coded to coronary atherosclerosis, ICD-9 414.0, or unspecified chronic ischaemic heart disease, ICD-9 414.9).

There has been a steady decline in the mortality rate due to IHD in the Western Australian population overall during 1980–1998, dropping from 209 per 100 000 person-years to 143 per 100 000 person-years in males, and from 139 per 100 000 person-years to 117 per 100 000 person-years in females. In contrast, the IHD mortality rate over the period has remained approximately constant in male psychiatric patients (an average 280 per 100 000 person-years) but increased from 153 per 100 000 person-years to 234 per 100 000 person-years in female psychiatric patients (Fig. 1).

Poisson regression analysis of the mortality rates found that, in the Western Australian population, the mortality rate had been decreasing by 1.9% per year (95% CI 1.7–2.1%) in males and by 0.7% per year in females (95% CI 0.5–1.0%). In contrast, in users of mental health services the mortality rate was not significantly changed in males (95% CI for annual increase –0.5% to 0.9%), and was increasing at a rate of 2.2% per year in females (95% CI 1.5–3.0%).

Whereas psychiatric patients had higher mortality rates, the age-standardised rates of first hospital admission of psychiatric patients for IHD were little different from

Table 1 Observed and expected number of deaths and mortality rate ratios from ischaemic heart disease in users of mental health services

Cause of death (ICD-9 code)	Males			Females		
	Observed	Expected	Mortality rate ratio (95% CI)	Observed	Expected	Mortality rate ratio (95% CI)
Acute myocardial infarction (410)	1109	637	1.74 (1.64–1.85)	1129	652	1.73 (1.63–1.84)
Other IHD (411–414)	757	341	2.22 (2.06–2.39)	801	362	2.21 (2.05–2.38)
Total IHD (410–414)	1866	977	1.91 (1.82–2.00)	1930	1016	1.90 (1.81–1.99)

IHD, ischaemic heart disease.

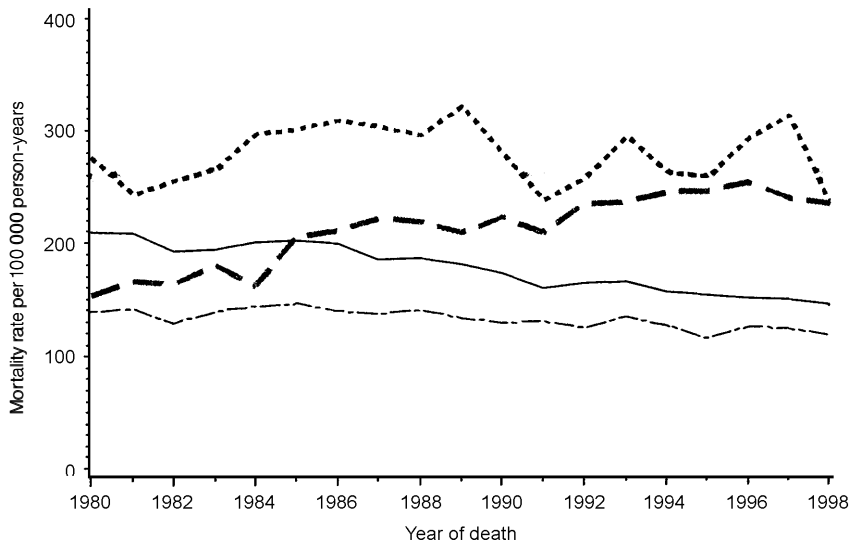


Fig. 1 Ischaemic heart disease mortality rates in Western Australia 1980–1998, total population rates (— males; - - - females) and rates in mental health service users (••••• males; - • - • - females).

those in the general population (Table 2). The number of first hospital admissions for acute myocardial infarction was close to that expected for males but lower than expected for females. Rates significantly higher than expected were observed for other acute and subacute IHD, and marginally elevated rates for angina pectoris. The rate of hospital admissions for coronary atherosclerosis was slightly but significantly down in male psychiatric patients, and there was a small but statistically significant elevation in female psychiatric patients.

Mortality and first hospital admission rates for IHD relative to the general community are shown in Table 3 by principal psychiatric diagnosis. Patients with dementia experienced the highest excess mortality, followed by patients with other psychoses. In males, elevated mortality rates were observed

in all diagnostic groups except personality disorders, adjustment disorder and non-specific diagnoses. However, only males with neurotic disorder and attempted self-harm had elevated rates of hospital admission for IHD. Males with schizophrenia were only 60% as likely to be admitted for IHD compared with males in the general population, despite being 1.8 times as likely to die from IHD. A similar pattern of excess mortality was observed in females, with the exception of females with schizophrenia. For patients with neurotic disorders, significantly elevated hospital admission rates were observed, together with correspondingly elevated mortality rates. For most other conditions, including dementia, alcohol and drug disorders, schizophrenia and other psychoses, personality disorders and depressive disorder, the mortality rate ratio was markedly higher than the hospital admission rate ratio.

Of IHD deaths, 13% occurred within 28 days of admission for acute myocardial infarction. The 28-day case fatality rate was directly comparable between people with previous contact with mental health services (12.2% mortality) and the remainder of the population (13.0% mortality). The excess mortality from IHD in psychiatric patients occurred outside the hospital environment. In those who survived for at least 28 days following admission for acute myocardial infarction, longer-term survival was worse in psychiatric patients (12% mortality after 2 years, compared with 7% mortality in the remainder of the population).

During 1980–1998, there were 30 593 hospital admissions for revascularisation procedures (17 348 for coronary artery bypass grafts and 13 245 for removal of coronary artery obstructions), representing 23 900 individual patients. Of these patients, 1807 had previous contact with mental health services. First hospital admission rates for revascularisation procedures were lower than expected in male psychiatric patients, and about what was expected in females (Table 4). Slightly lower rate ratios were observed for coronary artery bypass grafts compared with removal of coronary artery obstructions. Procedure rates were significantly lower in males with dementia, alcohol/drug disorders, schizophrenia, affective disorder and other psychosis, and in females with schizophrenia. Patients with neurotic disorders had elevated rates of revascularisation procedures.

DISCUSSION

Mortality rates from IHD were high and have been increasing in users of mental

Table 2 Observed and expected number of patients admitted to hospital for ischaemic heart disease in users of mental health services

Principal diagnosis (ICD-9 code)	Males			Females		
	Observed	Expected	Admission rate ratio (95% CI)	Observed	Expected	Admission rate ratio (95% CI)
Acute myocardial infarction (410)	1236	1314	0.96 (0.91–1.01)	1187	1273	0.93 (0.87–0.99)
Other acute & subacute IHD (411)	997	742	1.34 (1.25–1.44)	954	649	1.47 (1.37–1.57)
Angina pectoris (413)	1426	1294	1.10 (1.04–1.17)	1396	1120	1.25 (1.17–1.32)
Coronary atherosclerosis (414.0)	1173	1292	0.91 (0.85–0.97)	633	544	1.16 (1.07–1.27)
Other IHD (412, 414.1–414.9)	428	394	1.09 (0.99–1.21)	349	268	1.30 (1.16–1.46)
Total (410–414)	3440	3471	0.99 (0.95–1.02)	2984	2710	1.10 (1.06–1.15)

IHD, ischaemic heart disease.

Table 3 Standardised mortality rate ratios and standardised hospital admission rate ratios for ischaemic heart disease comparing users of mental health services with the general community, by principal psychiatric diagnosis

Principal psychiatric diagnosis	Males		Females	
	Mortality rate ratio (95% CI)	Admission rate ratio (95% CI)	Mortality rate ratio (95% CI)	Admission rate ratio (95% CI)
Dementia	4.48 (3.09–6.49)	0.76 (0.46–1.25)	2.88 (2.56–3.23)	1.15 (0.68–1.95)
Alcohol/drug disorders	1.57 (1.38–1.79)	0.94 (0.87–1.02)	1.75 (1.38–2.22)	1.01 (0.86–1.19)
Schizophrenia	1.78 (1.21–2.61)	0.59 (0.49–0.71)	0.86 (0.50–1.49)	0.60 (0.47–0.76)
Affective psychosis	1.58 (1.32–1.90)	1.00 (0.89–1.13)	1.35 (1.13–1.60)	1.06 (0.95–1.18)
Other psychoses	2.47 (2.15–2.85)	0.90 (0.75–1.07)	2.85 (2.54–3.19)	0.96 (0.81–1.13)
Neurotic disorder	1.36 (1.16–1.59)	1.34 (1.25–1.45)	1.23 (1.08–1.41)	1.46 (1.36–1.56)
Personality disorder	1.22 (0.73–2.04)	1.06 (0.86–1.31)	1.37 (0.71–2.61)	0.95 (0.67–1.34)
Adjustment disorder	0.96 (0.69–1.34)	0.94 (0.75–1.17)	0.67 (0.46–0.97)	1.07 (0.87–1.33)
Depressive disorder	1.81 (1.50–2.19)	1.12 (0.94–1.34)	1.87 (1.60–2.18)	1.25 (1.08–1.45)
Other mental disorders	1.57 (1.27–1.95)	1.03 (0.90–1.18)	1.26 (0.95–1.66)	1.26 (1.07–1.49)
Attempted self-harm	1.72 (1.32–2.24)	1.24 (1.04–1.47)	1.55 (1.11–2.17)	1.34 (1.10–1.64)
Non-specific diagnoses	1.02 (0.83–1.25)	0.96 (0.84–1.08)	1.38 (1.13–1.69)	1.01 (0.88–1.17)
Total	1.91 (1.82–2.00)	0.99 (0.95–1.02)	1.90 (1.81–1.99)	1.10 (1.06–1.15)

Table 4 Revascularisation procedure rate ratios (95% CIs) comparing users of mental health services with the general community, by procedure type and principal psychiatric diagnosis

Procedure type	Males		Females	
	Rate ratio (95% CI)	Rate ratio (95% CI)	Rate ratio (95% CI)	Rate ratio (95% CI)
Removal of coronary artery obstruction	0.85 (0.78–0.93)	0.98 (0.87–1.11)		
Coronary artery bypass graft or arterial implant	0.75 (0.70–0.80)	0.90 (0.81–1.01)		
Principal psychiatric diagnosis				
Dementia	0.14 (0.07–0.26)	0.53 (0.16–1.74)		
Alcohol/drug disorders	0.60 (0.52–0.68)	0.86 (0.61–1.21)		
Schizophrenia	0.31 (0.21–0.45)	0.34 (0.18–0.64)		
Affective psychosis	0.77 (0.64–0.93)	0.79 (0.62–1.01)		
Other psychoses	0.66 (0.48–0.91)	0.79 (0.52–1.20)		
Neurotic disorder	1.21 (1.09–1.35)	1.28 (1.12–1.46)		
Personality disorder	0.97 (0.72–1.31)	0.90 (0.50–1.65)		
Adjustment disorder	1.06 (0.79–1.41)	1.12 (0.76–1.66)		
Depressive disorder	0.86 (0.64–1.15)	0.85 (0.60–1.20)		
Other mental disorders	0.98 (0.81–1.19)	1.05 (0.75–1.47)		
Attempted self-harm	1.04 (0.80–1.35)	1.31 (0.91–1.88)		
Non-specific diagnoses	0.83 (0.69–1.00)	0.94 (0.72–1.25)		

health services. IHD was the leading cause of excess mortality in users of mental health services (accounting for 16% of all excess deaths, compared with 8% of excess deaths due to suicide). By contrast, the rate of hospital admission was practically no different from that in the general community, suggesting that case fatality is a major issue in this group. Revascularisation

procedure rates were low, particularly in patients with psychoses, raising questions of access to services and equity of service provision.

Risk factors for cardiovascular disease

Risk factors for cardiovascular disease include family history, smoking, poor diet,

high cholesterol, obesity, lack of exercise and stress levels. The 1997 National Survey of Mental Health and Wellbeing found that 43% of Western Australians with a diagnosable mental health condition were current smokers, compared with 24% among people without a mental disorder (Australian Bureau of Statistics, 1999). The prevalence of smoking was even higher among patients with psychosis, at 66% (Jablensky *et al*, 1999). Obesity is known to be a problem among people with chronic mental illness (Wallace & Tenant, 1998) and has been linked to overeating, underactivity and ignorance of correct dietary principles (Gopaldaswamy & Morgan, 1985; McCreddie *et al*, 1998). Weight gain is also a known side-effect of some antipsychotic medications (Silverstone *et al*, 1988; Allison *et al*, 1999). Lower levels of physical fitness have also been found in mental illness, linked to physical inactivity (Martinsen, 1990).

Trends in cardiovascular mortality

The rates of cardiovascular mortality in the general population of Western Australia have been in steady decline over the period from 1980 to 1998. Whereas public health campaigns and the introduction of new therapies have been shown to be very successful in the general population, it would appear that people with mental illness have received little or no benefit from this progress. Over the same period, cardiovascular mortality rates have increased in women known to mental health services and have remained approximately constant in men. The evidence cited above concerning cardiovascular risk factors in mental illness suggests that health campaigns targeted at these risk factors have had no impact in this population. Users of mental health services are a significant group numerically, representing 8% of the adult population of Western Australia. Therefore, public health and clinical strategies specifically targeted towards this group should be developed.

Psychiatric patients had a higher death rate from acute myocardial infarction than did the general community, although the rate of hospital admission was no higher than expected in males and marginally lower than expected in females. Outcomes following acute myocardial infarction are affected by how quickly emergency treatment can be administered. The lower rates of hospital admission could be due to the fact that psychiatric patients with acute

myocardial infarction died before they could be admitted to a hospital emergency department. It is possible that some psychiatric conditions, such as schizophrenia, may interfere with effective communication of symptoms. In critical conditions such as acute myocardial infarction, this may result in a delay of treatment that contributes to excess mortality. Social isolation could also be an issue, as people with chronic mental disorders are more likely to live alone, in a hostel or even to be homeless. Consequently, they are more likely to be alone at the time of an infarction and therefore to lack assistance.

There are other factors that may contribute to a high rate of coronary events in this group of patients. People with mental illness may experience an elevated risk of acute coronary events due to causes of fatal arrhythmias such as heavy smoking and possibly certain psychopharmacological agents (Glassman, 1998; Appleby *et al*, 2000). Considering the tentative evidence that antipsychotic polypharmacy may be associated with reduced survival (Waddington *et al*, 1998), there is a need for further research into the cardiotoxic effects of pharmacotherapy in psychiatry.

Mental illness and general health care

Although hospital admission rates for some ischaemic heart conditions were mildly elevated in users of mental health services compared with general population rates, the excess of mortality was considerably higher than the excess of hospital admission. This raises the question of whether, in spite of their rate of hospital admission, psychiatric patients are actually receiving the same level of care, relative to clinical need, that is afforded the general community for circulatory system disorders. Rates of revascularisation procedures were low considering the high rate of mortality. The results imply that people with mental illness are not receiving these interventions at a level matching that in the general population.

Druss *et al* (2000) found lower rates of cardiovascular procedures undertaken in an index admission for acute myocardial infarction if the patient had a mental disorder recorded as a comorbidity. Our results confirm in a large population-based record-linkage study that the total cardiovascular procedure rate in users of mental health

services is very low relative to their heavy burden of cardiovascular morbidity and mortality, although this varies by diagnosis.

When examining procedure rates by diagnosis, it is clear that patients with schizophrenia have a much lower rate of cardiovascular procedures, even though these patients have among the highest levels of smoking, obesity and other cardiovascular risk factors. Is it possible that circulatory system disorders are underdiagnosed in mental illness, contributing to the large excess in mortality? There is some indirect evidence to support this conjecture. It is known that mental health services can miss physical conditions in their patients (Koranyi, 1979; Koran *et al*, 1989), and that not all psychiatrists undertake physical examinations of their patients (McIntyre & Romano, 1977; Patterson, 1978). Moreover, Kendrick (1996) reported that in a survey of general practices he found that cardiovascular risk factors were regularly recorded in the notes for adults with long-term mental illness, but that the general practitioners had rarely attempted to intervene.

Stigma

Patients with neurotic disorders have a higher than average rate of revascularisation procedures, possibly because they comprise a subset of individuals with anxiety or somatisation disorders who are more likely to seek specialist consultation, or because the pressure of the physical symptoms of heart disease may be more difficult for individuals whose mechanisms of coping with stress are already challenged. In contrast, patients with schizophrenia are clearly disadvantaged regarding access to such treatment. These findings concerning the standard of health care provided to people with mental illness raise the question of whether the stigma associated with mental illness extends beyond the general community into the medical profession. Although implicit stigmatising attitudes on the part of providers of specialist care may play a role (Haghighat, 2001), the disparity in service provision may also be due to socio-economic factors. The majority of revascularisation procedures are performed as elective interventions to which carriers of private health insurance have readier access than people covered only by Medicare (the Australian national health service). Considering that, in Australia, only 13% of people

with psychotic disorders have private health insurance, as compared with an average of 32% for the general population (Jablensky *et al*, 1999), the compound predicament of this group of psychiatric patients deserves further study, to develop health care policy and interventions to reduce these inequalities.

Given that the excess risk of heart disease rather than the excess risk of suicide is the leading killer of people with mental illness, mental health services should adopt a more proactive role in identifying patients with cardiovascular problems and referring them for early intervention. People with mental illness may benefit also if general practitioners have a greater role in their primary medical care.

REFERENCES

- Allison, D. B., Mentore, J. L., Heo, M., *et al* (1999) Antipsychotic-induced weight gain: a comprehensive research synthesis. *American Journal of Psychiatry*, **156**, 1686–1696.
- Appleby, L., Shaw, J., Amos, T., *et al* (2000) Sudden unexplained death in psychiatric in-patients. *British Journal of Psychiatry*, **176**, 405–406.
- Australian Bureau of Statistics (1980–1998) *Population by Age and Sex, Western Australia*. ABS Cat. 3235.5. Canberra: Australian Bureau of Statistics.
- (1999) *Mental Health and Well-being: Profile of Adults, Western Australia 1997–98*. ABS Cat. 4326.0. Canberra: Australian Bureau of Statistics.
- Beaglehole, R., Stewart, A. W., Jackson, R., *et al* (1997) Declining rates of coronary heart disease in New Zealand and Australia. *American Journal of Epidemiology*, **145**, 707–713.
- Druss, B. G., Bradford, D. W., Rosenheck, R. A., *et al* (2000) Mental disorders and use of cardiovascular procedures after myocardial infarction. *JAMA*, **283**, 506–511.
- Glassman, A. H. (1998) Cardiovascular effects of antidepressant drugs: updated. *Journal of Clinical Psychiatry*, **59** (suppl. 15), 13–18.
- Gopaldaswamy, K. & Morgan, R. (1985) Too many chronically mentally disabled patients are too fat. *Acta Psychiatrica Scandinavica*, **72**, 254–258.
- Haghighat, R. (2001) A unitary theory of stigmatisation: pursuit of self-interest and routes to destigmatisation. *British Journal of Psychiatry*, **178**, 207–215.
- Harris, E. C. & Barraclough, B. (1998) Excess mortality of mental disorder. *British Journal of Psychiatry*, **173**, 11–53.
- Holman, C. D. J., Bass, A. J., Rouse, I. L., *et al* (1999) Population-based linkage of health records in Western Australia: development of a health services research

linked database. *Australian and New Zealand Journal of Public Health*, **23**, 453–459.

Jablensky, A., McGrath, J., Herrman, H., et al (1999) *National Survey of Mental Health and Well-being. Report 4. People Living with Psychotic Illness: an Australian Study*. Canberra: Commonwealth Department of Health and Aged Care.

Kendrick, T. (1996) Cardiovascular and respiratory risk factors and symptoms among general practice patients with long-term mental illness. *British Journal of Psychiatry*, **169**, 733–739.

Koran, L. M., Sox, H. C., Marton, K. I., et al (1989) Medical evaluation of psychiatric patients. I. Results in a state mental health system. *Archives of General Psychiatry*, **46**, 733–740.

Koranyi, E. K. (1979) Morbidity and rate of undiagnosed physical illnesses in a psychiatric clinic population. *Archives of General Psychiatry*, **46**, 733–740.

Martinsen, E. W. (1990) Physical fitness, anxiety and depression. *British Journal of Hospital Medicine*, **43**, 194–199.

McCreadie, R. G., MacDonald, E., Blacklock, C., et al (1998) Dietary intake of schizophrenia patients in Nithsdale, Scotland: case–control study. *BMJ*, **317**, 784–785.

McIntyre, J. S. & Romano, J. (1977) Is there a stethoscope in the house (and is it used)? *Archives of General Psychiatry*, **34**, 1147–1151.

National Coding Centre (1996) *The Official NCC Australian Version of the International Classification of Diseases, 9th Revision, Clinical Modification (ICD-9-CM)*. Sydney: National Coding Centre.

Patterson, C. H. (1978) Psychiatrists and physical examinations: a survey. *American Journal of Psychiatry*, **135**, 967–968.

Rothman, K. J. (1986) *Modern Epidemiology*. Toronto: Little Brown.

Silverstone, T., Smith, G. & Goodall, E. (1988) Prevalence of obesity in patients receiving depot antipsychotics. *British Journal of Psychiatry*, **153**, 214–217.

Waddington, J. L., Youssef, H. A. & Kinsella, A. (1998) Mortality in schizophrenia. Antipsychotic

CLINICAL IMPLICATIONS

- People with mental illness are at high risk of death due to heart disease.
- Despite the high mortality, hospital admissions for heart disease are no more common in people with mental illness than in the general community, whereas procedural interventions are much less frequently conducted.
- Greater attention needs to be paid to the general medical care of people with mental illness.

LIMITATIONS

- Information on risk factors for individuals, such as smoking, was not available.
- Clinical diagnoses were those recorded on the mental health information system, not research diagnoses.
- Detailed clinical information was not available on the mental health information system.

DAVID M. LAWRENCE, PhD, CASHEL D'ARCY J. HOLMAN, PhD, Department of Public Health, The University of Western Australia, Perth, Western Australia; ASSEN V. JABLENSKY, DMSc, Department of Psychiatry and Behavioural Science, The University of Western Australia, Perth, Western Australia; MICHAEL S. T. HOBBS, DPhil, Department of Public Health, The University of Western Australia, Perth, Western Australia

Correspondence: David Lawrence, Centre for Developmental Health, Curtin University of Technology, Telethon Institute for Child Health Research, PO Box 855, West Perth WA 6872, Australia.
Tel: +61 8 9489 7720; fax: +61 8 9489 7700; e-mail: dlawrence@ichr.uwa.edu.au

(First received 15 February 2002, final revision 24 June 2002, accepted 4 September 2002)

polypharmacy and absence of adjunctive anticholinergics over the course of a 10-year prospective study. *British Journal of Psychiatry*, **173**, 325–329.

Wallace, B. & Tenant, C. (1998) Nutrition and obesity in the chronic mentally ill. *Australian and New Zealand Journal of Psychiatry*, **32**, 82–85.

World Health Organization (1977a) *Manual of the International Classification of Diseases (ICD-9)*. Geneva: World Health Organization.

— (1977b) *Manual of the International Classification of Procedures in Medicine*. Geneva: World Health Organization.