

Firn densification in two dimensions: modelling the collapse of snow caves and enhanced densification in ice-stream shear margins

Jon Arrizabalaga-Iriarte^{1,2,3}, Lide Lejonagoitia-Garmendia², Christine S. Hvidberg², Aslak Grinsted², Nicholas M. Rathmann²

¹*Basque Centre for Climate Change (BC3), 48940, Leioa, Spain*

²*Niels Bohr Institute, University of Copenhagen, Copenhagen, Denmark*

³*Faculty of Science and Technology, University of the Basque Country (UPV/EHU), 48940, Leioa, Spain*

Correspondence: Jon Arrizabalaga-Iriarte <jon.arrizabalaga@bc3research.org>

ABSTRACT.

Accurate modeling of firn densification is necessary for ice core interpretation and assessing the mass balance of glaciers and ice sheets. In this paper, we revisit the nonlinear-viscous firn rheology introduced by Gagliardini and Meyssonier (1997) that allows multidimensional firn densification problems to be posed, subject to arbitrary stress and temperature fields. First, we extend the calibration of the coefficient functions that control firn compressibility and viscosity to 5 additional Greenlandic sites, showing that the original calibration is not universally valid. Next, we demonstrate that the transient collapse of a Greenlandic firn tunnel can be reproduced in a cross-section model, but that anomalous warm summer temperatures during 2012–2014 reduce confidence in attempts to independently validate the rheology. Finally, we show that the rheology can explain the increased densification rate and varying bubble close-off depth observed across the shear margins of the North-East Greenland Ice Stream. Although we suggest more work is needed to constrain the near-surface compressibility and viscosity functions of the rheology, our results strengthen the empirical grounding of the rheology for future use, such as modeling horizontal firn density variations over ice sheets for mass-loss es-

timates or estimating icegas age differences in ice cores subject to complex strain histories.

INTRODUCTION

Snow precipitated over glaciers and ice sheets transforms into ice in the uppermost layers of the ice column through firn densification. During this process, old snow is buried and compressed as a result of the overburden pressure until it reaches the density of pure ice. Understanding and modeling the details of this process is central for the interpretation of ice core records and assessing the mass balance of glaciers and ice sheets based on satellite altimetry.

In the case of ice core records, a good understanding of the air-trapping mechanism is key for interpreting gas records. The air present in firn pores becomes isolated from the atmosphere not until deep in the firn column, at the so-called bubble close-off (BCO) depth. This can create 100–1000 year differences in age between trapped gases and the surrounding ice (Δage), which must be considered to properly synchronize records (Schwander and others, 1997).

In the case of mass-balance monitoring from satellite altimetry, the problem is to translate changes in altitude into changes in mass. Sea-level rise estimates can be biased if the firn density field (i.e., firn compaction) is not correctly accounted for (Sørensen and others, 2011; Lipovsky, 2022), and recent efforts to include horizontal density variations over the West Antarctic ice sheet in large-scale modeling finds a correction in volume above flotation over 40 years of ten percent (Schelpe and Gudmundsson, 2023).

Firn densification models are an important tool that can help estimate the effect of densification on ice-core climatic records and mass-loss uncertainties. Ideally, densification models would be derived from first principles, but densification is a complex process in which crystals rearrange and change their shape and size. As a consequence, the relative importance of the different mechanisms driving densification is divided into several stages depending on local conditions (for details see Cuffey and Paterson, 2010, pages 16–22). To simplify matters, large-scale models of firn columns therefore tend to be constructed based on phenomenological arguments.

Herron and Langway (1980) proposed a one-dimensional empirically-tuned model of the first and second stages of densification for predicting depth–density, depth–load, and depth–age profiles based exclusively on local temperature and accumulation rate. Their celebrated model has since become the benchmark for

comparing more sophisticated models with (e.g. Barnola and others, 1991; Li and Zwally, 2011). However, reproducing observed density profiles at sites with diverse climatic conditions remains challenging, and some models give inconsistent results for the same boundary conditions (Lundin and others, 2017), suggesting that more work is warranted.

Densification models that attempt to expand on the physical rigor of previous work have also been proposed, although improved accuracy over empirically-based models does not necessarily follow (Thompson-Munson and others, 2023). For example, Alley (1987) proposed a simple model for porous firn densification by grain boundary sliding, several models make use of a one-dimensional *compactive viscosity* (Arnaud and others, 2000; Morris and Wingham, 2014; Stevens and others, 2023), and three-dimensional constitutive relations exist that argue for certain viscosity functions of firn (Salamatin and others, 2009; Fourteau and others, 2024). Finally, we note that Arthern and others (2010) proposed a Nabarro–Herring creep equation for porous materials that is the basis for several of the models used for altimetry corrections (Smith and others, 2020), and SNOWPACK—a physically based land-surface snow model originally developed to support avalanche warning (Bartelt and Lehning, 2002; Lehning and others, 2002a,b)—has also been successfully adapted to model near-surface firn densification (Keenan and others, 2021).

Beyond one-dimensional modeling

A central problem is to take into account the larger-scale ice flow, as there is evidence of accelerated firn densification when horizontal strain rates are nonzero (Kirchner and others, 1979; Alley and Bentley, 1988; Riverman and others, 2019). This phenomenon, called *strain softening*, was first introduced by Alley and Bentley (1988); they argued that during the second stage, densification is primarily driven by dislocation creep, which increases with the square of the effective stress. Hence, in regions where non-negligible horizontal strain rates are superimposed on the vertical firn compaction, the effective viscosity is reduced, which should, in turn, enhance densification.

Motivated by this, Oraschewski and Grinsted (2022) recently extended the Herron and Langway (1980) model (HL) by introducing a scale factor that allows the inclusion of horizontal strain rates as a sort of forcing parameter, together with the commonly used climate variables (temperature and accumulation rate). Specifically, the densification rate derived from the classical HL model is multiplied by a scale factor that is a function of the otherwise unresolved strain rate components.

Although extensions based on Herron and Langway (1980) are generally computationally inexpensive,

they remain one-dimensional. Multidimensional approximations can be constructed by horizontally joining firn-column models (e.g. Oraschewski and Grinsted, 2022), but formulating firn densification in terms of a three-dimensional constitutive stress–strain rate relationship is desirable for several reasons: (i) the effect of nonzero horizontal strain rates can be represented naturally (without the need for any *ad hoc* inclusion), (ii) two- or three-dimensional firn compaction problems can more easily be solved for complicated boundary conditions and geometries using e.g. the finite element method, and (iii) Glen’s flow law for solid ice may be extended to also characterize porous firn, thereby allowing for a seamless numerical treatment of the entire firn–ice column.

The semi-empirical rheology proposed by Gagliardini and Meyssonier (1997)—henceforth *GM97*—is exactly such a field formulation. It is based on a general compressible power-law rheology for porous materials, adapted to fit *in situ* measured density profiles from Site-2, Greenland (see Figure 2), and cold room deformation tests. The GM97 rheology has previously been shown capable of reproducing age–depth profiles of mountain glaciers (Zwinger and others, 2007; Licciulli and others, 2020; Gilbert and others, 2014; Lüthi and Funk, 2000) and predicting the evolution of snow caves buried over time in Antarctica (Brondex and others, 2020).

The GM97 rheology depends on two coefficient functions of density that determine the local compressibility and viscosity. The functional form of these, and associated calibration constants, have received little attention in the literature apart from the initial treatment by Gagliardini and Meyssonier (1997) and subsequently by Zwinger and others (2007). The proposed coefficient functions mainly disagree for near-surface firn densities, which can have a large impact on modeled surface velocities and densification rates (Gilbert and others, 2014). This has led to some disagreement in the literature about which coefficient functions to use. More work is therefore warranted to make clear whether the calibrations proposed by Gagliardini and Meyssonier (1997) and Zwinger and others (2007) (i) hold for a wider range of sites where firn cores have since been drilled and (ii) hold in two-dimensional settings where nontrivial densification fields have been observed. If so, this would put the GM97 rheology on stronger empirical grounds and increase confidence in its future use, which is the primary aim of our work.

In this paper, we test the flexibility and usefulness of the GM97 rheology for modeling firn compaction beyond one-dimensional problems. First, we revisit the original calibration of the rheology and assess the universality of it by trying to reproduce five additional Greenlandic ice-core sites where one-dimensional modeling is appropriate. Then, we test the model’s accuracy and dependency on temperature by attempting

to reproduce the collapse of a near-surface snow cave, constructed at the NEEM ice core site in Greenland. Finally, we test whether the rheology can reproduce the enhanced densification observed at the shear margins of the North-East Greenland Ice Stream (NEGIS), believed to be caused by strain-softening effects. In the following, we begin by introducing the GM97 rheology before considering the special one- and two-dimensional cases thereof, needed for our experiments.

METHOD

For a compressible material, mass conservation implies that

$$\frac{\partial \rho}{\partial t} + \nabla \cdot (\rho \mathbf{u}) = 0, \quad (1)$$

where \mathbf{u} and ρ are the velocity and density fields, respectively. The velocity field of a Stokes fluid is governed by the momentum balance

$$\nabla \cdot \boldsymbol{\sigma} + \rho \mathbf{g} = \mathbf{0}, \quad (2)$$

where $\boldsymbol{\sigma}(\dot{\boldsymbol{\epsilon}})$ is the stress tensor, $\dot{\boldsymbol{\epsilon}} = (\nabla \mathbf{u} + (\nabla \mathbf{u})^T)/2$ is the strain rate tensor, and \mathbf{g} is the gravitational acceleration vector.

The GM97 rheology treats firn densification as a secondary creep problem involving \mathbf{u} , ρ , and the temperature (or enthalpy) T , assuming negligible effects from primary creep, snow metamorphism, and the brittle fracturing of snow. The rheology represents both firn and ice using a single, compressible Norton–Bailey power-law fluid that conforms to Glen’s incompressible flow law in the limit $\rho \rightarrow \rho_{\text{ice}}$, where $\rho_{\text{ice}} = 917 \text{ kg m}^{-3}$ is the density of glacier ice. The rheology is to be understood as an extension of Glen’s flow law that depends on the first invariant of the strain rate tensor, $\text{tr}(\dot{\boldsymbol{\epsilon}})$, in addition to the usual second invariant, $\dot{\boldsymbol{\epsilon}} : \dot{\boldsymbol{\epsilon}}$. The rheology was first proposed by Duva and Crow (1994) for general porous materials but has since been adopted in glaciology, and recently with renewed interest (Licciulli and others, 2020; Brondex and others, 2020). Written in its inverse form (see Appendix B) required by the momentum

balance (2), the rheology is

$$\boldsymbol{\sigma} = A^{-1/n} \dot{\epsilon}_E^{(1-n)/n} \left[\frac{1}{a} \left(\dot{\boldsymbol{\epsilon}} - \frac{\text{tr}(\dot{\boldsymbol{\epsilon}})}{3} \mathbf{I} \right) + \frac{3}{2b} \text{tr}(\dot{\boldsymbol{\epsilon}}) \mathbf{I} \right], \quad (3)$$

$$\dot{\epsilon}_E^2 = \frac{1}{2a} \left(\dot{\boldsymbol{\epsilon}} : \dot{\boldsymbol{\epsilon}} - \frac{\text{tr}(\dot{\boldsymbol{\epsilon}})^2}{3} \right) + \frac{3}{4b} \text{tr}(\dot{\boldsymbol{\epsilon}})^2, \quad (4)$$

where $n = 3$ following above-mentioned adoptions of the rheology, $\dot{\epsilon}_E$ is the effective strain rate, and a and b are the coefficient functions controlling firm viscosity and compressibility (elaborated on below). Note here that Glen's law is recovered when $a = 1$, $b = 0$, and $\text{tr}(\dot{\boldsymbol{\epsilon}}) = 0$, which must be fulfilled in the limit $\rho \rightarrow \rho_{\text{ice}}$.

Since the flow-rate factor, A , depends on temperature, the evolution of the temperature field (T) needs to be considered, too:

$$\rho c \left(\frac{\partial T}{\partial t} + \mathbf{u} \cdot \nabla T \right) = \nabla \cdot (k_T \nabla T) + \boldsymbol{\sigma} : \dot{\boldsymbol{\epsilon}}, \quad (5)$$

where $c = c(T)$ and $k_T = k_T(T, \rho)$ are the specific heat capacity and thermal conductivity of ice (see Appendix A for empirical functional forms used). In GM97, the flow-rate factor is modeled the usual way as an Arrhenius activation function of temperature (Greve and others, 2014; Greve and Blatter, 2009):

$$A(T) = A_0 \exp[-Q/(RT)], \quad (6)$$

where, following Zwinger and others (2007), the canonical dependence on temperature of the prefactor A_0 and the activation energy for creep, Q , are presumed:

$$A_0 = \begin{cases} 3.985 \times 10^{-13} \text{ s}^{-1} \text{ Pa}^{-3} & \text{for } T \leq -10^\circ \text{C} \\ 1.916 \times 10^3 \text{ s}^{-1} \text{ Pa}^{-3} & \text{for } T > -10^\circ \text{C}, \end{cases} \quad (7)$$

$$Q = \begin{cases} 60 \text{ kJ mol}^{-1} \text{ K}^{-1} & \text{for } T \leq -10^\circ \text{C} \\ 139 \text{ kJ mol}^{-1} \text{ K}^{-1} & \text{for } T > -10^\circ \text{C} \end{cases}. \quad (8)$$

The fluidity also depends on other factors such as pressure (Weertman, 1973), water content (Barnes and others, 1971; Duval, 1977), impurities (Hörhold and others, 2012), and grain sizes and orientations (Duval, 1973; Shoji and Langway, 1988). The pressure dependence is estimated to be relatively small,

even at hydrostatic pressures near ice sheet beds, and therefore neglected (Rigsby, 1958). Regarding water content, temperatures are generally considered to be low enough to neglect the presence of liquid water. Impurities, such as dust, are known to increase ice softness by up to a factor of two, but in the Greenland firn column considered here—which consists only of Holocene deposition—the dust loading is minimal, or can at least be assumed to be uniform to first order. Finally, changes in the size and orientation of grains are thought to be important in dynamic regions such as ice streams and their shear margins (e.g. Gerber and others, 2021), but expanding (3)–(4) to also allow for viscous anisotropy is a daunting task and out of scope of this work, so the effect of developed crystal fabrics in the firn constitute a rheological uncertainty throughout this work.

Coefficient functions

Following Duva and Crow (1994), the coefficient functions a and b are taken to depend exclusively on the relative density

$$\hat{\rho} = \frac{\rho}{\rho_{\text{ice}}}. \quad (9)$$

In this way, if a and b are affected by temperature, grain sizes, etc., it is implicitly assumed that such dependencies can be factored out and absorbed into A . Indeed, this separation of dependencies is desirable since (3)–(4) can then easily be made to reduce to Glen’s law in the limit $\hat{\rho} \rightarrow 1$, as noted above.

[Fig. 1 about here.]

The coefficient functions a and b depend in part on a model for how stresses concentrate in the presence of enclosed voids (air) (Duva and Crow, 1994) for densities above the critical value $\hat{\rho} \geq \hat{\rho}_{\text{crit}} = 0.81$:

$$a_0 = \frac{1 + \frac{2}{3}(1 - \hat{\rho})}{\hat{\rho}^{2n/(n+1)}}, \quad (10)$$

$$b_0 = \frac{3}{4} \left(\frac{n^{-1}(1 - \hat{\rho})^{1/n}}{1 - (1 - \hat{\rho})^{1/n}} \right)^{2n/(n+1)}, \quad (11)$$

and in part on an empirical scaling relation for densities $\hat{\rho} < \hat{\rho}_{\text{crit}}$ that has been found to fit cold room experiments and densification measured at Site 2, Greenland. Specifically, two such sets of a and b scalings

have been proposed: Gagliardini and Meyssonier (1997) suggested (Figure 1, dashed lines)

$$a_1 = (a_0/b_0)b_1 \quad (12)$$

$$b_1 = \begin{cases} \exp(451.63\hat{\rho}^2 - 474.34\hat{\rho} + 128.12) & \text{for } \hat{\rho} < 0.5 \\ \exp(-17.15\hat{\rho} + 12.42) & \text{for } 0.5 \leq \hat{\rho} \leq \hat{\rho}_{\text{crit}} \\ b_0 & \text{for } \hat{\rho}_{\text{crit}} < \hat{\rho} \end{cases} \quad (13)$$

whereas Zwinger and others (2007) suggested (Figure 1, dark solid lines)

$$a_1 = \begin{cases} k_a \exp(-\gamma_a(\hat{\rho} - \hat{\rho}_{\text{sfc}})) & \text{for } \hat{\rho} \leq \hat{\rho}_{\text{crit}} \\ a_0 & \text{for } \hat{\rho}_{\text{crit}} < \hat{\rho} \end{cases} \quad (14)$$

$$b_1 = \begin{cases} k_b \exp(-\gamma_b(\hat{\rho} - \hat{\rho}_{\text{sfc}})) & \text{for } \hat{\rho} \leq \hat{\rho}_{\text{crit}} \\ b_0 & \text{for } \hat{\rho}_{\text{crit}} < \hat{\rho} \end{cases} \quad (15)$$

Here $\hat{\rho}_{\text{sfc}} = 0.4$ is the assumed relative density of surface snow, continuity at $\hat{\rho} = \hat{\rho}_{\text{crit}}$ implies the scaling exponents are

$$\gamma_a = \frac{\ln(k_a/a_0(\hat{\rho}_{\text{crit}}))}{\hat{\rho}_{\text{crit}} - \hat{\rho}_{\text{sfc}}} \quad \text{and} \quad \gamma_b = \frac{\ln(k_b/b_0(\hat{\rho}_{\text{crit}}))}{\hat{\rho}_{\text{crit}} - \hat{\rho}_{\text{sfc}}}, \quad (16)$$

and k_a and k_b are parameters to be calibrated against observations or experiments, suggested by Zwinger and others (2007) to be

$$k \equiv k_a = k_b \simeq 1000. \quad (17)$$

Note that k_a and k_b are the values of a and b at the surface, $\hat{\rho} = \hat{\rho}_{\text{sfc}}$.

As pointed out by Brondex and others (2020), k_a and k_b should ideally be re-calibrated on a case-by-case basis, although adopting the cold room and Site 2 calibration proposed by Zwinger and others (2007) ($k \simeq 1000$) has been found sufficient in several cases (Gilbert and others, 2014; Licciulli and others, 2020; Brondex and others, 2020) and is regarded as the canonical value. In this work, we revisit the best-fit value of k by considering additional one- and two-dimensional model experiments that are evaluated against observations.

Numerics

In the numerical experiments that follow, we solved the coupled density, momentum, and thermal problem using FEniCS (Logg and others, 2012), relying on Newton's method to solve nonlinearities. For reasons explained below, the ice stream scenario is not thermally coupled, but the mechanical problem is solved using the same method. The Jacobian of the residual forms (required for Newton iterations) were calculated using the unified form language (UFL) (Alnæs and others, 2015), used by FEniCS to specify weak forms of PDEs, which supports automatic symbolic differentiation. All weak forms are presented in Appendix A.

For our two-dimensional experiments, meshes were constructed using gmsh (Geuzaine and Remacle, 2009) and updated between time steps to evolve the interior and exterior free-surface boundary.

VALIDATION OF RHEOLOGY

We considered three independent numerical experiments to test the proposed best fit value of the calibration constant, $k \simeq 1000$ (Zwinger and others, 2007). First, we swept over k to determine which value can best reproduce observed firn density profiles from a wider range of Greenlandic ice core drill sites (case 1). Second, we sought a value of k that could best reproduce the measured collapse of a trench constructed at NEEM (Steffensen, 2014) (case 2). Third, we attempted to reproduce the observed enhanced densification over the shear margins of NEGIS by varying k (case 3).

Case 1: Reproducing Greenlandic ice cores

[Fig. 2 about here.]

We considered a total of six Greenlandic firn cores from the deep drilling sites at DYE-3, GRIP, NGRIP, NEEM, Site 2, and Site A (Figure 2). Since firn temperatures are approximately depth-constant at each site (Bréant and others (2017); Table 1), the problem reduces to that of solving for ρ and the vertical velocity u_z if the density and velocity fields are approximated as horizontally homogeneous (similar to traditional one-dimensional modelling, although this assumption might be less well justified at dynamic sites). Unlike the transient two-dimensional problems considered in the following, we solved directly for

Table 1. Depth-averaged temperature, accumulation rate, and surface density of each site considered. Accumulation rates and surface densities follow from Bréant and others (2017). For EastGRIP, the accumulation rate and surface density data are retrieved from Karlsson and others (2020) and Schaller and others (2016), respectively.

*Average surface temperature was used due to the lack of a temperature profile.

Site	Depth average T ($^{\circ}\text{C}$)	\dot{a} ($\text{kg m}^{-2} \text{a}^{-1}$)	ρ_{sfc} (kg m^{-3})
Site-2	-25.0 * (Langway, 1967)	360	350.1
Site-A (Crête)	-29.5 (Clausen and others, 1988)	282	321.7
DYE-3	-21.0 (Dahl-Jensen and others, 1998)	500	357.0
GRIP	-31.7 (Johnsen, 2003)	210	367.0
NGRIP	-31.5 (Dahl-Jensen and others, 2003)	175	299.9
NEEM	-28.8 (Orsi and others, 2017)	200	307.2
EastGRIP	-28.0 * (Zuhr and others, 2021)	130	290

the steady states of (1)–(2) subject to the boundary conditions

$$\rho(z = 0) = \rho_{\text{sfc}}, \tag{18}$$

$$u_z(z = 0) = -\dot{a}, \tag{19}$$

$$u_z(z = -H) = -\dot{a} \frac{\rho_{\text{sfc}}}{\rho_{\text{ice}}}, \tag{20}$$

where H is the height of the modeled firn column, ρ_{sfc} is the surface snow density, and \dot{a} is the snow accumulation rate at the site (Table 1). The boundary condition (20) assumes that, in steady state, the mass flux into the firn column equals that exiting the column, where H must be taken sufficiently large to guarantee that the bottom of the model domain is pure ice, $\rho(z = -H) = \rho_{\text{ice}}$.

We determined the best-fit value of k by sweeping a wide range of values and calculating the resulting model–observation misfit. Specifically, we considered $k \in [1; 1000]$ and calculated the root-mean-square-error (RMSE) between the modeled and observed density profiles:

$$\text{RMSE} = \sqrt{\frac{1}{N} \sum_{i=1}^N (\rho(z_i) - \rho_{\text{obs}}(z_i))^2}, \tag{21}$$

where N is the total number of discrete depth levels at which the misfit is evaluated. Computing the

percentage error of each level is also an option (weighing the mismatch with respect to the reference value it is deviating from), but the results obtained in this way are virtually identical (not shown).

[Fig. 3 about here.]

Figure 3 shows the RMSE misfits calculated for the lower-density section of the firn column ($\hat{\rho} < 0.8$) where k is expected to have the largest influence (see above section on the coefficient functions). The results suggest a misfit minimum exists somewhere between $k = 100$ and $k = 500$ but with disagreements between the sites; that is, a global best-fit k might not be strictly applicable across all sites (disregarding effects from seasonal temperature variations not treated here for simplicity). For reference, Figure 4 shows the model performance in the case of Site 2 for different values of k . Note that the sensitivity to the magnitude of k decreases for relative densities above 0.8. The underestimation of density at depth is present in all the sites modeled.

[Fig. 4 about here.]

Case 2: Trench collapse at NEEM

In an attempt to further characterize the model dependence on k , we searched for alternative validation experiments that involve near-surface (low-density) firn, since the choice of k affects compressibility the most there. We found that the observed collapse of a cylindrical subsurface tunnel, constructed at the NEEM ice core site, is well-suited for this purpose.

[Fig. 5 about here.]

The tunnel was constructed to determine whether subsurface trenches, built following the Camp Century snow-blowing casting technique (Clark, 1965), but using large inflatable balloons instead, could serve as drilling and science trenches for deep ice core projects. To judge its feasibility, the tunnel collapse rate was tracked for three years after its construction. The initial and final geometries are shown in Figure 5 for reference, although the pictures are from the northern end of the trench, while we modeled the southern end where measurements were made most consistently.

The tunnel was constructed by blowing snow out of a large trench and installing an inflatable balloon in the open cavity. After inflating it, snow was blown back into the trench again, burying the balloon in a more closely packed (denser) firn with a typical density of $\rho_{\text{trench}} = 550 \text{ kg m}^{-3}$ (Brondex and others, 2020;

Steffensen, 2022). Finally, after a couple of days, the balloon was deflated and removed, preserving the casted, circular structure of the tunnel.

[Fig. 6 about here.]

We simplify the trench collapse problem by considering a vertical cross-section model, thus implicitly assuming translational invariance along the tunnel (strictly speaking, only relevant for very long tunnels). The initial geometry and density field (Figure 6) was constructed following the technical report by Steffensen (2014), and subsequently allowed to evolve thermomechanically throughout the duration of the test, approximately two years long. Note that the roof includes the reported extra 1 m of backfilled snow, but that the presence of other structures in the trench (connecting tunnels, cabins, etc.) is not considered here, which might change results slightly and are a source of uncertainty.

The initial background density field is taken to be equal to the smoothed density profile of the NEEM core (Bréant and others, 2017). The snow accumulation rate is set to the annual average over the trench, which is double the reference measurement at NEEM due to wind-driven excess accumulation (Steffensen, 2014). The initial temperature field is taken to be uniform and equal to the firn column average measured at NEEM, $\langle T_{\text{NEEM}} \rangle$ (Table 1). However, during the 5 days that it took to construct the tunnel, both the trench and the snow to be backfilled were exposed to higher-than-usual temperatures (between -3 and -6 °C; Steffensen (2014)). Thus, the initial temperature of the firn that surrounded the tunnel was possibly up to 25 °C warmer than the firn-average-background temperature (most likely less, though). In order to assess the potential underestimation of the initial collapse rate, caused by prescribing too cold firn, we therefore also consider a second scenario in which all the backfilled snow starts out with a temperature of -5 °C. This is just an approximation and does not intend to accurately represent the initial temperature field, but rather allows us to gauge the impact that a much hotter trench might have on our results.

The model domain has a width of $L = 20$ m and a time-evolving height profile $h(x, t)$ relative to a fixed bottom boundary located at a depth of $H = 30$ m below the initial surface. Both L and H are large enough to avoid boundary conditions affecting the solution (judged by trial and error). The bottom boundary is fixed by a free slip condition and kept at the site's depth-averaged firn temperature. At the surface, we thermally force the model by setting the firn surface temperature equal to measurements from the local Greenland Climatic Network weather station, $T_{\text{GCnet}}(t)$ (Vandecrux and others, 2023). To estimate the impact of not taking the surface temperature evolution into account, we also ran the model by forcing it with a constant firn surface temperature, set equal to the average measured surface temperature over the

modeled period, $\langle T_{\text{GCnet}}(t) \rangle$. A periodic boundary condition is imposed on the left and right sides to close the thermal problem.

In summary, the boundary conditions are

$$u_z(x, z = -H) = 0, \quad (22)$$

$$T(x, z = -H) = T_{\text{icecore}}(z = -H), \quad (23)$$

$$T(x, z = h, t) = \begin{cases} T_{\text{GCnet}}(t) & \text{if variable climate,} \\ \langle T_{\text{GCnet}}(t) \rangle = -27.7^\circ\text{C} & \text{if average climate.} \end{cases} \quad (24)$$

Unlike the steady-state model above, the top surface boundary is allowed to evolve freely, as is the interior tunnel boundary. Both boundaries were updated using the Arbitrary Lagrangian-Eulerian (ALE) method provided by FEniCS, allowing mesh boundary vertices to be displaced according to the local product between velocity and time-step size. In this method, surface accumulation is taken into account by adding a constant vertical velocity component, \dot{a} , to the surface boundary.

Note that, in effect, surface accumulation gradually leads to an increase in the average height profile since no mass exits the model domain; the domain bottom will, therefore, also gradually tend towards pure ice. Since we are only interested in the *relative* deformation of the trench geometry—and not the change in center-of-trench position—this is of no concern and does not affect our results.

Due to large density gradients causing numerical instabilities, we assume that the surface accumulation has a density of ρ_{trench} rather than ρ_{sfc} . The accumulation rate was therefore scaled by a factor of $\rho_{\text{sfc}}/\rho_{\text{trench}} = 0.56$ to ensure that the total mass deposited (and hence overburden load) is correct. Although this assumption reduces the densification rate of the fresh snow layers, this does not have any direct effect on the mechanical evolution of the tunnel below. However, replacing the snow with a thinner layer of denser (and, thus, less airy) firn may cause the tunnel to be more sensitive to the surface temperature variations.

[Fig. 7 about here.]

We solve the transient problem for the four values $k = \{100, 500, 1000, 2000\}$ using an Euler time-stepping scheme with a time step of $\Delta t = 0.75$ days. The results are summarized in Figure 7, where the tunnel height evolution and the final cross section are shown for each case. Once again, the smaller k is, the stiffer the firn and, thus, the less the tunnel deforms. For values lower than $k = 2000$, the predicted

deformation is too small for all the modeled scenarios. For higher values, the tunnel deforms too much, and the ceiling starts to cave inward (not shown here).

The hotter the surrounding firm is, the faster the tunnel is found to shrink, as anticipated (dash-dotted compared to solid lines). There is a delayed response in the collapse rates modeled to variations in surface temperature, which is a consequence of the time required for the thermal perturbation to reach the depth of the tunnel. Additionally, we also note that the sensitivity of the tunnel to surface temperature variations decreases with time as it becomes more isolated below the accumulating snow.

Case 3: NEGIS shear margin troughs

[Fig. 8 about here.]

The North-East Greenland Ice Stream (NEGIS) is a coherent structure of fast ice flow, initiating less than 150 km from the ice divide and extending more than 600 km to the coast (Grinsted and others, 2022). Elevation maps obtained from ArcticDEM (Porter and others, 2018) show that, compared to average surface height variations, there are relatively pronounced depressions in the shear margins of NEGIS (Figure 8), and recent work by Hvidberg and others (2020) has verified the depths of the troughs (depressions) in ArcticDEM using GPS stakes.

[Fig. 9 about here.]

The origin of the shear margin troughs was revealed in a recent seismic survey by Riverman and others (2019) (survey transect is shown in Figure 9 as a white line, and the surface height in Figure 10b as a blue line), finding that there is enhanced densification at the shear margins (blue contours in Figure 10c). Oraschewski and Grinsted (2022) later showed that these depressions might partly be explained by strain softening, as the horizontal velocity gradients are large there.

Reproducing the shear-margin troughs in a model of Riverman's transect therefore makes for a good test case of the GM97 rheology (which accounts for strain softening) and potentially allows for another independent way to estimate the best value of k . In addition to the observed shear-margin troughs (blue line in Figure 10b), we also include the observed bubble close-off depth (i.e., depth at which $\rho = 830 \text{ kg m}^{-3}$) as a calibration target (white line in Figure 10c). Note that the ability to model BCO depths might be less sensitive to the value of k and more sensitive to the functional forms of a and b (densities are large at the BCO).

[Fig. 10 about here.]

We model the transect using a setup that combines the approaches from both the one-dimensional firn column and NEEM trench models. The yz domain considered is $L = 47.5$ km wide and $H = 200$ m tall, including a 5 km buffer on both lateral sides to prevent the boundaries from affecting the interior solution (not shown in the figures). The boundary conditions are free-slip on the left and right boundary:

$$u_y(y = 0, z) = 0, \quad (25)$$

$$u_y(y = L, z) = 0, \quad (26)$$

whereas a non-zero mass flux is imposed on the bottom boundary that balances the surface-integrated mass flux:

$$u_z(y, z = -H) = -\dot{a} \frac{\rho_{\text{sfc}}}{\rho_{\text{ice}}}. \quad (27)$$

Here, H is taken large enough to ensure that the density at the bottom boundary is that of pure ice. The density field is subject only to the surface boundary condition

$$\rho(y, z = 0) = \rho_{\text{sfc}}. \quad (28)$$

The surface density is considered to be $\rho_{\text{sfc}} = 343 \text{ kg m}^{-3}$ (average of the top 2 meters of firn, Schaller and others (2016)) while the accumulation rate is taken to be uniform across the transect for simplicity, $\dot{a} = 130 \text{ kg m}^{-2} \text{ yr}^{-1}$ (Karlsson and others, 2020), despite it may be up to a 20% higher in the shear margins due to drift snow trapped by the troughs (Riverman and others, 2019). The surface height profile $h(y)$ was updated following the usual kinematic equation for free surface evolution:

$$\frac{\partial h}{\partial t} = \dot{a} + u_z^{(s)} - u_y^{(s)} \frac{\partial h}{\partial y}, \quad (29)$$

where \dot{a} is the surface accumulation rate, and $u_y^{(s)}$ and $u_z^{(s)}$ are the surface velocity components in the yz model domain. When re-meshing after updating the surface boundary, the density field was linearly interpolated onto the new mesh.

In the absence of any horizontal variation in boundary conditions and initial state, the density field

would remain horizontally homogeneous in time (the column would evolve solely due to gravitational compaction). However, additional out-of-plane strain rate components play an important role in the NEGIS transect: the shear margins experience large horizontal x - y shear (red line in Figure 10a) that can cause significant strain softening, and the trunk might experience a slight extending flow (if any) in the along-flow x -direction (blue line in Figure 10a). We therefore superimpose the observed $\dot{\epsilon}_{xy}(y)$ profile on our y - z model domain by assuming it to be depth invariant, while neglecting $\dot{\epsilon}_{xx}$ and $\dot{\epsilon}_{yy}$ as they are comparatively small. All strain rates were calculated based on satellite-derived velocities from the MEaSUREs program (Howat, 2020) and slightly smoothed to avoid numerical instabilities. Finally, lacking information about the $\dot{\epsilon}_{xz}$ shear component, we set it to zero following the shallow shelf approximation, commonly used to model ice stream flow.

The effect of the out-of-model-plane component $\dot{\epsilon}_{xy}$ on strain softening is included by extending the strain rate invariants that enter the effective viscosity, $\dot{\epsilon}_E$, according to (to be consistent with) their three-dimensional definitions:

$$\text{tr}(\dot{\epsilon}) = \text{tr}(\dot{\epsilon}_{2D}), \quad (30)$$

$$\dot{\epsilon} : \dot{\epsilon} = \dot{\epsilon}_{2D} : \dot{\epsilon}_{2D} + 2\dot{\epsilon}_{xy}^2, \quad (31)$$

where $\dot{\epsilon}_{2D}$ is the two-dimensional strain rate tensor in our yz model.

For the temperature field across the transect, we consider two different scenarios. In the first scenario, we assume a uniform temperature of $T = -28^\circ\text{C}$ (and thus a uniform flow-rate factor) (Table 1). In the second scenario, we impose a 6°C elevated temperature in the ice-stream shear margins as reported by Holschuh and others (2019) (high-end estimate, could be lower), postulated to be caused by strain heating. Since ice is a good thermal insulator, the 6°C anomaly is specified as an abrupt but depth-constant step function crossing into the shear margins. Although adding a thermal coupling to this problem as well (i.e., evolving the temperature field) would increase the physical realism, the out-of-plane heat flow is poorly known, making the thermal problem not well-posed. On the other hand, by imposing the above-mentioned steady temperature fields, the effect of dynamic strain softening (due to nonlinear viscosity) is made clearer, as its effect can be understood in isolation.

For brevity, we report only on four transient simulations that are chosen to be representative of our results: $k = 500$ and $k = 2000$ for each of the two temperature field scenarios. Here, we consider the simulation to have reached a steady-state solution once the surface elevation changes by less than 0.02 m

per year (which, with a timestep of 1.25 a, takes around a thousand iterations to achieve). Also, since the different model simulations result in firn slabs of different thicknesses, when plotting, we offset the model frames to ensure a common surface elevation, allowing for an easier comparison with the observed elevation profile. The steady-state surface elevations and BCO depths modeled are plotted in Figures 10b and 10c, respectively, along with the observed profiles.

Overall, we find that the model (red and yellow lines) predicts higher rates of densification in the shear margins, where the shallowest part of the modeled firn columns are found to align with the maximum in horizontal shear strain rates. As expected, increasing k or shear-margin temperatures results in softer firn that shortens the shear-margin firn column (raises the BCO depth).

Comparing the surface elevation profiles (Figure 10b), the model can at best explain half the depth of the shear-margin troughs, with the hot shear-margin scenario predicting the deepest troughs. Once a common vertical offset is set, the predicted surface elevation profiles are found to be practically identical regardless of k . The model cannot capture the central depression, observed around $y \simeq 27.5$ km, which appears not to be related to strain-softening effects since both $\dot{\epsilon}_{xy}$ and $\dot{\epsilon}_{xx}$ profiles are negligible there. In addition, we find a horizontal mismatch between the modeled trough locations and observations.

The predicted BCO depths, on the other hand, seem to match observations better, with the $k = 2000$ heated margin scenario being better able to reproduce the observed BCO profile. However, independent of k , the measured depth minima of the BCO depth are, like the troughs, horizontally offset compared to the local $\dot{\epsilon}_{xy}$ maxima. Further, the modeled BCO depth contour decreases more quickly than observations in the left shear margin.

DISCUSSION

Reproducing Greenlandic ice cores

Our model results for the six Greenlandic firn cores suggest that the GM97 rheology is best evaluated by separately considering two different density ranges (depth ranges) of the modeled firn column.

For $\hat{\rho} > 0.8$, the model is unable to closely reproduce the observed density profiles regardless of the value of k and generally underestimates the density for a given depth (see, e.g., Figure 4 below -50 m). At these higher densities, the coefficient functions are defined following the analytical model by Duvà and Crow (1994), which the authors remarked might overestimate the densification rate for uniaxial compression but underestimate when the stress state is close to hydrostatic. On one hand, their caveats are insufficient for

explaining our underestimated densification rate since our model assumes uniaxial compression, but, on the other hand, could be a possible explanation since incompressibility is indeed approached at the bottom part of the firn column.

However, for $k = 10$, the predicted density profiles are in better agreement with the deeper observations (see, e.g., Figure 4 for $\hat{\rho} > 0.8$), suggesting a possible mismatch between the optimal value of k needed for reproducing the near-surface and near-BCO parts of the firn column. This, we speculate in turn, might suggest some kind of inconsistency in either a_0, b_0 or a_1, b_1 .

For $\hat{\rho} < 0.8$, the model performance is very sensitive to the choice of k , which affects the decrease in compressibility with increasing density (see Methods section). There, we are generally able to find good fits of k for reproducing the Greenlandic cores. There is, however, a risk of overfitting since noise and uncertainties in the measurements ultimately affect the spread in best-fit estimates of k , so this sort of analysis can only be taken so far. As shown in Figure 4, the lower-density observations always fall between the profiles modeled for $k = 100$ and $k = 1000$, implying that the best value is somewhere in between. Indeed, this is a general tendency across all six firn cores, suggesting that k might be somewhat less than the canonical value of $k \simeq 1000$. We note that this discrepancy could, in part, be explained by the calibration of a and b (Gagliardini and Meyssonier, 1997; Zwinger and others, 2007) being based on the cold room experiments by Langway (1967). Due to obvious practical limitations, these mechanical tests cannot replicate the slow in situ densification process, so they are performed at higher temperatures and stresses. While their calibration of k worked well for the density profile that the rheology was validated against, it is not surprising that different values of k might provide better fits at other sites.

The only site-specific parameters in our firn model are the depth-average temperature, surface density, and accumulation rate, which means that further local characteristics that affect the densification are neglected (some of which are captured to some extent in other models— e.g., grain-size effects; Kingslake and others (2022)). Within our simple one-dimensional firn model, it is therefore not surprising that these few site-specific parameters are insufficient for capturing the full diversity of the densification process. On that note, it is also possible that the coefficient functions a and b have some dependencies not considered in the model, especially temperature (see the discussion of the NEEM tunnel experiments below). Finally, uncertainties in the imposed, observed surface densities affect not only the near-surface solution, but eventually also the compressibility of the whole firn column by virtue of $a(\rho(z))$ and $b(\rho(z))$, underlining the importance of accurate surface density measurements for future studies.

Steady state assumption

The steady-state density profiles calculated here do not by definition include effects from seasonal variations in temperature (or melt, for that matter). Given the exponential flow rate factor $A(T)$, our model might therefore be underestimating the rate of densification due to warm temperature anomalies softening the firn more than equivalent cold anomalies would stiffen it. Similar asymmetric responses to temperature have already been reported in other cases (e.g., firn air content; Thompson-Munson and others (2023)) and, as found in the comparison between the average and variable climate scenarios in Figure 7, this asymmetry also affects the firn column height and density profile. A more realistic model setup might therefore result in a smaller k , since the inferred k for a given temperature profile would, in our current model setup, have to compensate for the fact that $A(T)$ should have been (somewhat) larger.

Another factor disregarded here is the present-day superimposed warming trend, which implies that the near-surface firn temperatures are hotter than the depth-averaged temperature. Similarly to the effect of seasonal variation, a more realistic model setup that could account for thermal heterogeneities might therefore produce lower estimates of k . The depth-averaged thermal profiles used here might therefore also explain some of the spread in k estimated between sites, since each core is likely to be affected differently due to different extraction dates and the climate experienced.

Is k universal?

With all of the above caveats taken into account, our RMSE analysis (Figure 3) suggests that there is no optimal value of k , universally applicable to all sites. Nonetheless, our results of one-dimensional firn compaction indicate that, if a single value of k is to be used, a value in the range of 100 to 400 is probably better than the canonical value of $k = 1000$. If the sample size of relevant firn cores could be expanded in future work, a more accurate value of k might be sought with higher confidence by using a global RMSE metric (combined RMSE across all cores for a given k ; not attempted here), which would also allow for more robust uncertainty quantification.

Addressing the mentioned model shortcomings might lead to improved misfits and thus, potentially, a better ability to determine whether a universal value of k exists. But given the misfits found in the deeper part of the firn columns (e.g. $\hat{\rho} > 0.8$ in Figure 4 for Site 2)—where much smaller values of k are needed to reproduce observed densities—our results suggest that more work is equally needed to understand the limitations of the canonical coefficient functions a and b .

Taken together, we therefore argue that the benefit of the GM97 rheology is (as of now) not to provide a new tool for altimetry corrections, but rather its ability to seamlessly represent multidimensional firn compaction in large-scale transient problems.

Trench collapse at NEEM

The results from the NEEM trench simulations do not agree with our one-dimensional firn compaction results. Overall, setting $k \simeq 2000$ gives the best agreement with the observed trench deformation, which is twice the canonical value and ten times that needed to minimize the RMSE of the NEEM density profile (Figure 3). This is somewhat surprising since such a magnitude of k causes a significant overestimation of the near-surface densification rate in our one-dimensional model above (taking the above model caveats into account), and we have no reason to believe that a and b should not apply to both one- and two-dimensional problems. Although it is possible that calibrating against surface experiments is not necessarily comparable to the above full-column calibrations, the disagreement between estimates of k suggests that either the experimental conditions are not realistic enough, they have changed significantly since the formation of the firn column (e.g., due to the warming climate), or the model fails to properly reproduce some important aspect of the densification process. Combining all the specifications of the technical report (Steffensen, 2014) with the surface measurements made by affiliated projects at NEEM, we believe that the present experimental conditions are as detailed as they can practically be for this experiment, but several sources of uncertainty are still relevant to consider.

First, the hot trench simulations clearly show that the choice of initial temperature field is a key factor in this problem. Despite all scenarios resulting in a progressively reduced rate of collapse as time passes, the observed pronounced initial collapse rate (grey dots in Figure 7) is best explained if a hotter initial trench is taken into account. However, by setting k sufficiently large, the observed initial collapse rate can also be roughly reproduced. But that affects the final tunnel height, making it considerably shorter than observed because the firn is, in effect, made too compressible. The only way to reproduce both the transient change in tunnel height and its final height is therefore by an appropriate choice of both k and initial thermal state. If it is possible to repeat this experiment in the future, we thus suggest that the temperature field also be well documented to reduce uncertainties in the model initial state.

Secondly, unusually high atmospheric temperatures, recorded during the first summer of the experiment, reached six positive temperature days and caused extraordinary melt events that were observed

covering the tunnel ceiling in blue refrozen meltwater patches (Steffensen, 2014). The tunnel evolution was surely impacted by the presence of this percolating liquid water, which, apart from perturbing the temperature and density fields, has been observed to accelerate grain growth and affect densification rates (Brun, 1989; Mizukami and Perica, 2008; Sturm and Holmgren, 1998). This might have contributed to the observed initial collapse rate, and Steffensen believed that it had perturbed the structural rigidity of the tunnel (Steffensen, 2014). Additional uncertainties that may have favored the exceptionally large initial deformation rate could be the effect of nearby tunnels and structures, or the wind-enhanced accumulation due to the proximity to the main camp dome (not considered here).

We emphasize that the large best-fit value of $k \simeq 2000$ is not a consequence of neglecting the recent surface warming trend; setting the depth-average firn temperature as the surface boundary condition results in a tunnel evolution that is almost identical to the average current-climate experiments in Figure 7 (not shown). This means that, regardless of whether the model is forced with present-day temperatures or not (the impact of any recent trend is not significant in the depth-averaged temperature yet), a larger value around $k \simeq 2000$ is required to fit the observed rate of collapse.

Finally, a source of uncertainty is of course the model uncertainty. For example, it is possible that the coefficient functions a and b also depend on temperature, although the GM97 rheology assumes that $A(T)$ captures the effect of temperature alone. If so, the optimal value of k would also have to account for some sort of effective contribution/adjustment due to temperature. As long as the climatic conditions are stable, this contribution would likely only vary between sites, but changes in thermal conditions (such as the average surface temperature or amplitude of the seasonal variations) could, in this way, also contribute to model uncertainty.

Taken together, we argue that the conditions considered in our simulation might not have captured those at NEEM during 2012–2014 sufficiently well, and thus the best fit $k \simeq 2000$ inferred from this test is subject to considerable uncertainty. Our results also underline the impact that initialization and boundary conditions can have on these kind of model predictions, along with processes unaccounted for such as surface melting, which complicate model calibration and validation attempts. Nonetheless, our sensitivity tests and experiments are sufficient to provide some qualitative insight into the structural characteristics of these tunnels. While not shown here, this also includes how to maximize the lifetime of subsurface tunnels, which we find requires a carefully selected combination of initial tunnel shape and the cross-sectional profile of backfilled snow. This line of modeling could be relevant for the future development and design of trenches,

whether for ice core drilling projects or as storage facilities (e.g. Brondex and others, 2020).

NEGIS shear margin troughs

We find that our NEGIS cross-section model is partly able to reproduce the faster densification observed at the shear margins near EGRIP, resulting in shallower firn columns. Despite the idealized nature of our model and boundary conditions (elaborated on below), we believe that our results are sufficiently convincing to support the hypothesis that the deep troughs are partly due to nonlinear-viscous firn softening/compaction, resulting from significant shear-margin strain rates. There are, however, some differences compared to observations that suggest important model shortcomings, but also highlight a path forward for future studies of firn densification over ice streams.

In order to characterize the model mismatch with observations more carefully, we include for comparison two useful results from Oraschewski and Grinsted (2022): (i) the effective horizontal strain rate experienced by the firn column throughout its formation ($\dot{\epsilon}_{\text{eff}} = \sqrt{\dot{\epsilon} : \dot{\epsilon}/2}$ integrated along upstream flow lines; dashed violet line in Figure 10a), and (ii) the BCO depth contour modeled by Oraschewski and Grinsted using their strain-rate-scale-factor model that relies on $\dot{\epsilon}_{\text{eff}}$ (dashed violet line in Figure 10c).

Trough depths

The predicted elevation profiles appear to be insensitive to the value of k , but this is not the case for two subtle reasons. First, Figure 10b shows the surface height after setting a common surface reference to allow easy comparison with observations; that way, the ~ 3 m difference in surface heights between experiments with different k is manifested instead at depth (e.g., the BCO depths are shifted accordingly). Second, sensitivity tests indicate that the difference in modeled surface height of steady-state firn columns, for different choices of k , does not change as the superimposed shear strain rate increases (not shown). Although the predicted densification rates *are* affected by a superimposed strain rate (rendering the firn column shallower in the shear margin), the difference between surface heights for different k thus remains independent along the transect. Hence, while the height of the firn column is reduced with increasing k , the depth of the surface trough is independent of k , leaving the shear-margin surface troughs not useful for assessing/calibrating k .

Regarding the effect of temperature, anomalies can have an important impact on densification rates, as seen in the NEEM trench model. Our experiments with $+6^\circ\text{C}$ warmer shear margins soften the local

firn column, significantly improving the predicted surface elevation and BCO depth profiles. However, the applied step-function temperature field is rather simplified; the transition to the maximum temperature (where shear strain rates are maximal) surely occurs more gradually. Nonetheless, our results are intended as a first-order estimate of the effect of warm shear margins that can be understood as an upper bound.

Since the mismatch between the modeled and observed surface height is insensitive to k , and the potential effect of warmer margins is relatively limited, the remaining ~ 10 m discrepancy in trough depths might, in part, be due to the horizontal variation of the accumulation neglected in this study. Even if such conditions were well known, the modeled cross section should not be expected to reproduce all observed density contours exactly since upstream flow corrections are not accounted for; that is, firn parcel trajectories might in reality not be vertical as modeled, but could enter the domain obliquely.

We also speculate that the empirically-proposed parts of the coefficient functions a and b , relevant for low-density firn, might be too crude to capture the densification process in more exotic strain rate regimes, such as ice stream shear margins. The main reason being that the real strain rate history, experienced by the firn column, is probably closer to $\dot{\epsilon}_{\text{eff}}$ (dashed violet line in Figure 10a), which is supposed to also include the upstream past in an effective sense. Insofar as this measure is accurate, it is much smaller than the typical shear-margin strain rates used here, and therefore the magnitude of the resulting troughs would be only half as deep for a given k (not shown). Given the already shallow depressions, this would make the origin of the shear margin troughs even harder to explain.

We mention that the central depression is ignored here, as it is possibly caused by ice flow effects, resulting from a combination of upstream flow effects and interactions with the subglacial environment (Christianson and others, 2014; Riverman and others, 2019; Hvidberg and others, 2020). Note that this irregular wavy structure is present throughout the trunk of the ice stream (Figure 8). A more realistic, three-dimensional ice stream model of the entire ice–firn column might lead to a better understanding of how the broader ice-flow setting could induce this wavy surface topography (left for future research). The same applies to understanding to what extent the effective strain rate $\dot{\epsilon}_{\text{eff}}$ is a useful measure (i.e., can account for upstream effects in an integrated sense), which could be validated, or at least better understood, if calculated in a three-dimensional firn model of the ice stream.

Horizontal offsets

Another discrepancy with observations is that the modeled firm columns are most shallow exactly where $|\dot{\epsilon}_{xy}|$ peaks, while observed shear-margin surface depressions (measured by differential GPS) and the BCO depth minima are shifted by $\sim 2.5\text{--}5$ km (Figure 10b,c). In contrast, this shift is less apparent in the work by Oraschewski and Grinsted (2022), likely a consequence of having used $\dot{\epsilon}_{\text{eff}}$ as the forcing strain rates, which follows the observed BCO depth profile closer than the local strain-rate profile used here. This suggests that some upstream correction to our superimposed shear strain rate field might reduce the horizontal offset between modeled and observed BCO depths. But the same correction does not necessarily apply to all layers (especially to those closer to the surface), since the age of the parcel and, thus, the upstream trajectories, are different (shorter). If taken into account (assuming the superimposed shear strain rate is indeed depth constant), it is possible that offsets between the modeled and observed trough positions and BCO depths might be explained.

BCO depths

Overall, the predicted BCO depth profiles match observations better than the surface elevation, capturing the most defining features reasonably well. Unfortunately, these do not help much in assessing the optimal value of k for the same reason that the shear margin troughs are not useful; the sensitivity of the modeled BCO depth profile to k is very small compared to the effect of superimposed shear strain rates (not to mention the uncertainties in the seismically-inferred BCO depth contour by Riverman and others (2019)).

One striking mismatch is the missing "tail" of the left-hand side BCO peak, contrary to the right-hand side; modeled BCO depths drop off much faster toward interior values than observed. The profile of $\dot{\epsilon}_{\text{eff}}$ (violet dashed line in Figure 10a) does not necessarily suggest that upstream effects can explain this skewed BCO depth contour, at least given the present-day velocity map used here. Grinsted and others (2022) recently reported an observed outward acceleration of the shear margins, which is strongest on the southern shear margin (left-hand side in Figure 10). The northern shear margin (right-hand side in Figure 10) has a somewhat double margin structure (Jansen and others, 2024) that apparently does not seem to affect the predicted BCO depth, and a recent radar survey (Nyman and others, 2024) found that the crystal fabric there (unlike the southern shear margin) does not match modeled fabrics well, suggesting the northern shear margin might be more dynamic. Therefore, if the outward acceleration of the southern shear margin is indeed related to the "tail" misfit, it is not entirely clear why the modeled BCO depth in the northern

shear margin fits observations better.

Our simulations rely on present-day strain rates that are almost four times bigger than the flow-line integrated effective strain rate $\dot{\epsilon}_{\text{eff}}$. If superimposing $\dot{\epsilon}_{\text{eff}}$ is more accurate than using $\dot{\epsilon}_{xy}$ as done here, the firn column height predicted by the GM97 rheology at the shear margins would be notably smaller than observed (similar in magnitude to our results at $y \simeq 22$ km). Since choosing a different k cannot improve the misfit (cf. above discussion), this could suggest that the definition of the coefficient functions a and b would be worth revisiting.

Implications for ice-core proxies

An accurate model for predicting how strain softening can cause shallower firn columns would be a useful tool to help the interpretation of some ice core proxies. In the case of gas measurements, for example, our results agree with Oraschewski and Grinsted (2022), suggesting that in the shear margins of NEGIS, BCO is reached up to ~ 200 a earlier than in the center of the ice stream where it takes around 400 a (estimated as the time taken for firn parcels to reach BCO density, starting from the surface and subject to the modeled steady-state velocity field). As a consequence, the age difference between the gas and surrounding ice, Δage , is smaller, which should be accounted if ice-cores were to be drilled there; conversely, this could be a reason for drilling ice cores in ice-stream shear margins (higher gas age resolution). What this means for the Δage profile in the EGRIP ice core is unclear, but present-day surface velocities suggest that firn parcels ending up in the EGRIP core did not pass through the ice stream shear margins (Hvidberg and others, 2020).

CONCLUSION

In this paper, we applied the firn rheology by Gagliardini and Meyssonier (1997) (GM97) to several present-day firn densification problems in Greenland using the finite element method. Unlike many existing one-dimensional firn models, the GM97 rheology can account for arbitrary, three-dimensional stress configurations (including the effect of strain softening), and seamlessly represents both firn and ice in a single continuum description. This makes GM97 a promising rheology that enables the study of complex firn densification scenarios, but its calibration and general performance arguably require more testing, such as on a wider range of conditions and flow settings.

With that focus, we revisited the canonical compressibility and viscosity functions of the rheology,

proposed by Zwinger and others (2007), by extending their calibration to include five additional Greenlandic firn cores. While the model is able to reasonably fit all the density profiles by varying the free calibration parameter, k , between 100 and 500 (lower than the canonical $k \simeq 1000$ proposed by Zwinger and others), we find that no single calibration is applicable to all six cores. We suggest that more work might be needed to determine whether better-suited functional forms exist for the compressibility and viscosity of firn, although climate-induced variations on firn mechanical properties were not considered due to steady state assumptions.

Seeking another independent way to validate the GM97 calibration, we attempted to reproduce the collapse of a firn tunnel, constructed at NEEM ice-core site, Greenland. While the GM97 rheology was found to be well-suited for simulating the transient deformation of the tunnel geometry, the dependence of densification rate on density was found to be very sensitive to the exact value of k . Combined with other unknowns related to the thermal forcing history and the presence of melt water, we conclude that the experimental conditions at NEEM were probably insufficiently documented to allow us to prescribe realistic model boundary conditions. We therefore have less confidence in the resulting best-fit (calibration) of $k \simeq 2000$.

Finally, we constructed a cross-section model of the North-East Greenland Ice Stream (NEGIS) to assess whether the higher rate of densification, observed in the ice-stream shear margins, might be explained by increased strain softening due to large horizontal shearing. Supporting this hypothesis, we found that modeled firn columns in the shear margins are indeed shallower when accounting for the observed horizontal shear and elevated temperatures. Even though upstream and depth corrections are probably needed to fully understand the mismatch between model and observations, and that modeled surface trough depths can account for only half the observed depths, other important features such as the bubble close-off (BCO) depth are better reproduced. The NEGIS experiment was not found useful to further constrain the compressibility and viscosity functions of the GM97 rheology due to the depths of the resulting surface depression and BCO perturbation not being sufficiently sensitive to k .

In summary, we demonstrated that the GM97 rheology is useful for simulating firn densification under a diverse set of stress/strain scenarios, making it relevant for future use cases such as modeling horizontal firn density variations over ice sheets for mass-loss estimates, or estimating ice–gas age differences for ice-core proxy interpretations. However, our work also suggests that it would be worth revisiting the compressibility and viscosity functions of the GM97 rheology, such as validating/calibrating them in more

carefully constructed lab experiments to determine their density and temperature dependencies in greater detail.

CODE AVAILABILITY

The codes used to produce the model runs and plots of this work can be found in the following repository: https://github.com/jonarri/JOG_FirnDensificationIn2D_GM97.

ACKNOWLEDGEMENTS

We wish to thank Editor Alan Rempel, Max Brils, and an anonymous reviewer for providing comments that greatly improved the structure of our manuscript and the numerical experiments considered.

The research leading to these results has received funding from the Novo Nordisk Foundation, grant no. NNF23OC0081251, the Independent Research Fund Denmark (DFR), grant no. 2032-00364B, the Villum Foundation, grants no. 23261 and 16572, and by ref. CEX2021-001201-M funded by MCIN/AEI/ 10.13039/501100011033. JAI benefits from a predoctoral grant from the Basque Government (PRE_2023_1_0131).

EGRIP is directed and organized by the Centre for Ice and Climate at the Niels Bohr Institute, University of Copenhagen. It is supported by funding agencies and institutions in Denmark (A. P. Møller Foundation, University of Copenhagen), USA (US National Science Foundation, Office of Polar Programs), Germany (Alfred Wegener Institute, Helmholtz Centre for Polar and Marine Research), Japan (National Institute of Polar Research and Arctic Challenge for Sustainability), Norway (University of Bergen and Trond Mohn Foundation), Switzerland (Swiss National Science Foundation), France (French Polar Institute Paul-Emile Victor, Institute for Geosciences and Environmental research), Canada (University of Manitoba) and China (Chinese Academy of Sciences and Beijing Normal University).

AUTHOR CONTRIBUTIONS

All authors contributed to the methodology, based on initial ideas by NMR, AG and CSH. JAI and LLG wrote all model code and performed all simulations under the supervision of NMR. JAI, LLG and NMR wrote the first draft. All authors contributed to the final manuscript.

REFERENCES

- Alley R (1987) Firn densification by grain-boundary sliding: a first model. *Journal de Physique Colloques*, **48**, C1–249–C1–256 (doi: 10.1051/jphyscol:1987135)
- Alley RB and Bentley CR (1988) Ice-Core Analysis on the Siple Coast of West Antarctica. *Annals of Glaciology*, **11**, 17 (doi: 10.3189/S0260305500006236)
- Alnæs MS, Blechta J, Hake J, Johansson A, Kehlet B, Logg A, Richardson C, Ring J, Rognes ME and Wells GN (2015) The FEniCS Project Version 1.5. *Archive of Numerical Software*, **3**(100) (doi: 10.11588/ans.2015.100.20553)
- Arnaud L, Barnola JM and Duval P (2000) Physical modeling of the densification of snow/ firn and ice in the upper part of polar ice sheets. In *Physics of Ice Core Records*, 285–305, Hokkaido University Press
- Arthern RJ, Vaughan DG, Rankin AM, Mulvaney R and Thomas ER (2010) In situ measurements of Antarctic snow compaction compared with predictions of models. *Journal of Geophysical Research: Earth Surface*, **115**(F3) (doi: <https://doi.org/10.1029/2009JF001306>)
- Barnes PF, Tabor D and Walker JCF (1971) The friction and creep of polycrystalline ice. *Proceedings of the Royal Society of London. A. Mathematical and Physical Sciences*, **324**, 127 – 155 (doi: <https://doi.org/10.1098/rspa.1971.0132>)
- Barnola JM, Pimienta P, Raynaud D and Korotkevich YS (1991) CO₂-climate relationship as deduced from the Vostok ice core: a re-examination based on new measurements and on a re-evaluation of the air dating. *Tellus B: Chemical and Physical Meteorology*, **43**(2), 83–90 (doi: 10.3402/tellusb.v43i2.15249)
- Bartelt P and Lehning M (2002) A physical SNOWPACK model for the Swiss avalanche warning: Part I: numerical model. *Cold Regions Science and Technology*, **35**(3), 123–145, ISSN 0165-232X (doi: [https://doi.org/10.1016/S0165-232X\(02\)00074-5](https://doi.org/10.1016/S0165-232X(02)00074-5))
- Bréant C, Martinerie P, Orsi A, Arnaud L and Landais A (2017) Modelling firn thickness evolution during the last deglaciation: constraints on sensitivity to temperature and impurities. *Climate of the Past*, **13**(7), 833–853 (doi: 10.5194/cp-13-833-2017)
- Brondex J, Gagliardini O, Gillet-Chaulet F and Chekki M (2020) Comparing the long-term fate of a snow cave and a rigid container buried at Dome C, Antarctica. *Cold Regions Science and Technology*, **180**, 103164 (doi: <https://doi.org/10.1016/j.coldregions.2020.103164>)
- Brun E (1989) Investigation on Wet-Snow Metamorphism in Respect of Liquid-Water Content. *Annals of Glaciology*, **13**, 2226 (doi: 10.3189/S0260305500007576)

- Christianson K, Peters LE, Alley RB, Anandakrishnan S, Jacobel RW, Riverman KL, Muto A and Keisling BA (2014) Dilatant till facilitates ice-stream flow in northeast Greenland. *Earth and Planetary Science Letters*, **401**, 57–69, ISSN 0012-821X (doi: <https://doi.org/10.1016/j.epsl.2014.05.060>)
- Clark E (1965) Camp Century evolution of concept and history of design construction and performance. Technical Report 174, CRREL
- Clausen H, Gundestrup N, Johnsen S, Bindshadler R and Zwally J (1988) Glaciological investigations in the Crête Area, Central Greenland: a search for a new deep-drilling site. *Annals of Glaciology*, **10**, 1015 (doi: [10.3189/S0260305500004080](https://doi.org/10.3189/S0260305500004080))
- Cuffey KM and Paterson WSB (2010) *The physics of glaciers*. Butterworth-Heinemann, Oxford, 4th edition (doi: <https://doi.org/10.3189/002214311796405906>)
- Dahl-Jensen D, Mosegaard K, Gundestrup N, Clow GD, Johnsen SJ, Hansen AW and Balling N (1998) Past temperatures directly from the Greenland Ice Sheet. *Science*, **282**(5387), 268–271 (doi: [10.1126/science.282.5387.268](https://doi.org/10.1126/science.282.5387.268))
- Dahl-Jensen D, Gundestrup N, Gogineni SP and Miller H (2003) Basal melt at NorthGRIP modeled from borehole, ice-core and radio-echo sounder observations. *Annals of Glaciology*, **37**, 207212 (doi: [10.3189/172756403781815492](https://doi.org/10.3189/172756403781815492))
- Duva J and Crow P (1994) Analysis of consolidation of reinforced materials by power-law creep. *Mechanics of Materials*, **17**(1), 25–32, ISSN 0167-6636 (doi: [https://doi.org/10.1016/0167-6636\(94\)90011-6](https://doi.org/10.1016/0167-6636(94)90011-6))
- Duval P (1973) Plasticité: Fluage de la glace polycristalline pour les faibles contraintes. *C. R. Séances Acad. Sci., Ser. A*, **277**, 703–706
- Duval P (1977) The role of water content on the creep rate of polycrystalline ice. *IAHS*, **118**, 29–33
- Fourteau K, Freitag J, Malinen M and Löwe H (2024) Microstructure-based simulations of the viscous densification of snow and firn. *The Cryosphere*, **18**(6), 2831–2846 (doi: [10.5194/tc-18-2831-2024](https://doi.org/10.5194/tc-18-2831-2024))
- Gagliardini O and Meyssonier J (1997) Flow simulation of a firn-covered cold glacier. *Annals of Glaciology*, **24**, 242248 (doi: [10.3189/S0260305500012246](https://doi.org/10.3189/S0260305500012246))
- Gerber TA, Hvidberg CS, Rasmussen SO, Franke S, Sinnl G, Grinsted A, Jansen D and Dahl-Jensen D (2021) Upstream flow effects revealed in the EastGRIP ice core using Monte Carlo inversion of a two-dimensional ice-flow model. *The Cryosphere*, **15**(8), 3655–3679 (doi: <https://doi.org/10.5194/tc-15-3655-2021>)
- Geuzaine C and Remacle JF (2009) Gmsh: a three-dimensional finite element mesh generator with built-in pre- and post-processing facilities. *International Journal for Numerical Methods in Engineering*, **79**(11), 1309–1331 (doi: <https://doi.org/10.1002/nme.2579>)

- Gilbert A, Gagliardini O, Vincent C and Wagnon P (2014) A 3-D thermal regime model suitable for cold accumulation zones of polythermal mountain glaciers. *Journal of Geophysical Research* (doi: 10.1002/2014JF003199)
- Greve R and Blatter H (2009) *Dynamics of ice sheets and glaciers*. Springer Science & Business Media (doi: <https://doi.org/10.3189/002214311798043717>)
- Greve R, Zwinger T and Gong Y (2014) On the pressure dependence of the rate factor in Glens flow law. *Journal of Glaciology*, **60**(220), 397–399 (doi: 10.3189/2014JoG14J019)
- Grinsted A, Hvidberg C, Lilien D, Rathmann N, Karlsson N, Gerber T, Kjær H, Vallelonga P and Dahl-Jensen D (2022) Accelerating ice flow at the onset of the Northeast Greenland Ice Stream. *Nature Communications*, **13** (doi: 10.1038/s41467-022-32999-2)
- Herron M and Langway C (1980) Firn densification: an empirical model. *Journal of Glaciology*, **25**(93), 373385 (doi: 10.3189/S0022143000015239)
- Holschuh N, Lilien D and Christianson K (2019) Thermal weakening, convergent flow, and vertical heat transport in the Northeast Greenland Ice Stream shear margins. *Geophysical Research Letters*, **46** (doi: 10.1029/2019GL083436)
- Howat I (2020) MEaSUREs Greenland ice velocity: selected glacier site velocity maps from optical images, version 3 (doi: 10.5067/RRFY5IW94X5W)
- Hvidberg CS, Grinsted A, Dahl-Jensen D, Khan SA, Kusk A, Andersen JK, Neckel N, Solgaard A, Karlsson NB, Kjær HA and Vallelonga P (2020) Surface velocity of the Northeast Greenland Ice Stream (NEGIS): assessment of interior velocities derived from satellite data by GPS. *The Cryosphere*, **14**(10), 3487–3502 (doi: 10.5194/tc-14-3487-2020)
- Hörhold M, Laepple T, Freitag J, Bigler M, Fischer H and Kipfstuhl S (2012) On the impact of impurities on the densification of polar firn. *Earth and Planetary Science Letters*, **325–326**, 93–99, ISSN 0012-821X (doi: <https://doi.org/10.1016/j.epsl.2011.12.022>)
- Jansen D, Franke S, Bauer CC, Binder T, Dahl-Jensen D, Eichler J, Eisen O, Hu Y, Kerch J, Llorens MG and others (2024) Shear margins in upper half of Northeast Greenland Ice Stream were established two millennia ago. *Nature communications*, **15**(1), 1193 (doi: 10.1038/s41467-024-45021-8)
- Johnsen SJ (2003) GRIP Temperature Profile [dataset] (doi: 10.1594/PANGAEA.89007)
- Karlsson NB, Razik S, Hörhold M, Winter A, Steinhage D, Binder T and Eisen O (2020) Surface accumulation in Northern Central Greenland during the last 300 years. *Annals of Glaciology*, **61**(81), 214224 (doi: 10.1017/aog.2020.30)

- Keenan E, Wever N, Dattler M, Lenaerts JTM, Medley B, Kuipers Munneke P and Reijmer C (2021) Physics-based SNOWPACK model improves representation of near-surface Antarctic snow and firn density. *The Cryosphere*, **15**(2), 1065–1085 (doi: 10.5194/tc-15-1065-2021)
- Kingslake J, Skarbek R, Case E and McCarthy C (2022) Grain-size evolution controls the accumulation dependence of modelled firn thickness. *The Cryosphere*, **16**(9), 3413–3430 (doi: 10.5194/tc-16-3413-2022)
- Kirchner JF, Bentley CR and Robertson JD (1979) Lateral density differences from seismic measurements at a site on the Ross Ice Shelf, Antarctica. *Journal of Glaciology*, **24**(90), 309312 (doi: 10.3189/S0022143000014829)
- Langway C (1967) Stratigraphic analysis of a deep ice core from Greenland (doi: <https://doi.org/10.1130/SPE125-p1>)
- Lehning M, Bartelt P, Brown B and Fierz C (2002a) A physical SNOWPACK model for the Swiss avalanche warning: Part III: meteorological forcing, thin layer formation and evaluation. *Cold Regions Science and Technology*, **35**(3), 169–184, ISSN 0165-232X (doi: [https://doi.org/10.1016/S0165-232X\(02\)00072-1](https://doi.org/10.1016/S0165-232X(02)00072-1))
- Lehning M, Bartelt P, Brown B, Fierz C and Satyawali P (2002b) A physical SNOWPACK model for the Swiss avalanche warning: Part II. Snow microstructure. *Cold Regions Science and Technology*, **35**(3), 147–167, ISSN 0165-232X (doi: [https://doi.org/10.1016/S0165-232X\(02\)00073-3](https://doi.org/10.1016/S0165-232X(02)00073-3))
- Li J and Zwally H (2011) Modeling of firn compaction for estimating ice-sheet mass change from observed ice-sheet elevation change. *Annals of Glaciology*, **52**(59), 17 (doi: 10.3189/172756411799096321)
- Licciulli C, Bohleber P, Lier J, Gagliardini O, Hoelzle M and Eisen O (2020) A full Stokes ice-flow model to assist the interpretation of millennial-scale ice cores at the high-Alpine drilling site Colle Gnifetti, Swiss/Italian Alps. *Journal of Glaciology*, **66**(255), 35–48 (doi: <https://doi.org/10.1017/jog.2019.82>)
- Lipovsky BP (2022) Density matters: ice compressibility and glacier mass estimation. *Journal of Glaciology*, **68**(270), 831832 (doi: 10.1017/jog.2021.132)
- Logg A, Mardal KA, Wells GN and others (2012) *Automated Solution of Differential Equations by the Finite Element Method*. Springer, ISBN 978-3-642-23098-1 (doi: 10.1007/978-3-642-23099-8)
- Lundin J, Stevens C, Arthern R, Buizert C, Orsi A, Ligtenberg S, Simonsen S, Cummings E, Essery R, Leahy W, Harris P, Helsen M and Waddington E (2017) Firn model intercomparison experiment (FirnMICE). *Journal of Glaciology*, **63**, 1–22 (doi: 10.1017/jog.2016.114)
- Lüthi M and Funk M (2000) Dating ice cores from a high Alpine glacier with a flow model for cold firn. *Annals of Glaciology*, **31**, 6979 (doi: 10.3189/172756400781820381)
- Mizukami N and Perica S (2008) Spatiotemporal Characteristics of Snowpack Density in the Mountainous Regions of the Western United States. *Journal of Hydrometeorology*, **9**(6), 1416–1426 (doi: 10.1175/2008JHM981.1)

- Morris EM and Wingham DJ (2014) Densification of polar snow: Measurements, modeling, and implications for altimetry. *Journal of Geophysical Research: Earth Surface*, **119**(2), 349–365 (doi: <https://doi.org/10.1002/2013JF002898>)
- Nymand NF, Lilien DA, Gerber TA, Hvidberg CS, Steinhage D, Gogineni SP, Taylor D and Dahl-Jensen D (2024) Double reflections in novel polarized radar data reveal ice fabric in the North East Greenland Ice Stream. *Authorea Preprints* (doi: [10.22541/au.171987057.70357157/v1](https://doi.org/10.22541/au.171987057.70357157/v1))
- Oraschewski FM and Grinsted A (2022) Modeling enhanced firn densification due to strain softening. *The Cryosphere*, **16**(7), 2683–2700 (doi: [10.5194/tc-16-2683-2022](https://doi.org/10.5194/tc-16-2683-2022))
- Orsi A, Kawamura K, Masson-Delmotte V, Fettweis X, Box J, Dahl-Jensen D, Clow G, Landais A and Severinghaus J (2017) The recent warming trend in North Greenland. *Geophysical Research Letters*, **44**(12), 6235–6243 (doi: <https://doi.org/10.1002/2016GL072212>)
- Porter C, Morin P, Howat I, Noh M, Bates B, Peterman K, Keesey S, Schlenk M, Gardiner J, Tomko K, Willis M, Kelleher C, Cloutier M, Husby E, Foga S, Nakamura H, Platson M, Wethington M, Williamson C, Bauer G, Enos J, Arnold G, Kramer W, Becker P, Doshi A, D’Souza C, Cummins P, Laurier F and Bojesen M (2018) ArcticDEM, Version 3 (doi: [10.7910/DVN/OHHUKH](https://doi.org/10.7910/DVN/OHHUKH))
- Rigsby GP (1958) Effect of hydrostatic pressure on velocity of shear deformation of single crystals of ice. *J. Glaciol.*, **3**, 273–278 (doi: <https://doi.org/10.3189/S0022143000023911>)
- Riverman K, Alley R, Anandakrishnan S, Christianson K, Holschuh N, Medley B, Muto A and Peters L (2019) Enhanced firn densification in high-accumulation shear margins of the NE Greenland Ice Stream. *Journal of Geophysical Research: Earth Surface*, **124** (doi: [10.1029/2017JF004604](https://doi.org/10.1029/2017JF004604))
- Salamatin A, Lipenkov V, Barnola J, Hori A, Duval P and Hondoh T (2009) Snow/Firn Densification in Polar Ice Sheets. **68**
- Schaller CF, Freitag J, Kipfstuhl S, Laepple T, Steen-Larsen HC and Eisen O (2016) NEEM to EGRIP traverse - density of the surface snow (2 m profiles). PANGAEA (doi: [10.1594/PANGAEA.867873](https://doi.org/10.1594/PANGAEA.867873)), in supplement to: Schaller, CF et al. (2016): A representative density profile of the North Greenland snowpack. *The Cryosphere*, **10**(5), 1991–2002, <https://doi.org/10.5194/tc-10-1991-2016>
- Schelte CAO and Gudmundsson GH (2023) Incorporating horizontal density variations into large-scale modeling of ice masses. *Journal of Geophysical Research: Earth Surface*, **128**(2), e2022JF006744 (doi: <https://doi.org/10.1029/2022JF006744>)

- Schwander J, Sowers T, Barnola JM, Blunier T, Fuchs A and Malaizé B (1997) Age scale of the air in the summit ice: Implication for glacial-interglacial temperature change. *Journal of Geophysical Research*, **1021**, 19483–19494 (doi: 10.1029/97JD01309)
- Shoji H and Langway C (1988) Flow-law parameters of the Dye 3, Greenland, deep ice core. *Annals of Glaciology*, **10**, 146150 (doi: 10.3189/S026030550000433X)
- Smith B, Fricker HA, Gardner AS, Medley B, Nilsson J, Paolo FS, Holschuh N, Adusumilli S, Brunt K, Csatho B, Harbeck K, Markus T, Neumann T, Siegfried MR and Zwally HJ (2020) Pervasive ice sheet mass loss reflects competing ocean and atmosphere processes. *Science*, **368**(6496), 1239–1242 (doi: 10.1126/science.aaz5845)
- Steffensen J (2014) Report on the NEEM 2012 balloon trench experiment. Technical report, Centre for Ice and Climate, Niels Bohr Institute, University of Copenhagen
- Steffensen JP (2022) Poster: Balloon cast subsurface ice drilling and ice core analysis trenches evolution and fate. In *International Partnerships in Ice Core Drilling Sciences (IPICS)*
- Stevens CM, Lilien DA, Conway H, Fudge TJ, Koutnik MR and Waddington ED (2023) A new model of dry firn-densification constrained by continuous strain measurements near South Pole. *Journal of Glaciology*, 115 (doi: 10.1017/jog.2023.87)
- Sturm M and Holmgren J (1998) Differences in compaction behavior of three climate classes of snow. *Annals of Glaciology*, **26**, 125130 (doi: 10.3189/1998AoG26-1-125-130)
- Sørensen L, Simonsen S, Nielsen K, Lucas-Picher P, Spada G, Adalgeirsdottir G, Forsberg R and Hvidberg C (2011) Mass balance of the Greenland Ice Sheet (20032008) from ICESat dataThe impact of interpolation, sampling and firn density. *The Cryosphere*, **5**, 173–186 (doi: 10.5194/tc-5-173-2011)
- Thompson-Munson M, Wever N, Stevens CM, Lenaerts JTM and Medley B (2023) An evaluation of a physics-based firn model and a semi-empirical firn model across the Greenland Ice Sheet (1980–2020). *The Cryosphere*, **17**(5), 2185–2209 (doi: 10.5194/tc-17-2185-2023)
- Vandecrux B, Box JE, Ahlstrøm AP, Andersen SB, Bayou N, Colgan WT, Cullen NJ, Fausto RS, Haas-Artho D, Heilig A, Houtz DA, How P, Iosifescu Enescu I, Karlsson NB, Kurup Buchholz R, Mankoff KD, McGrath D, Molotch NP, Perren B, Revheim MK, Rutishauser A, Sampson K, Schneebeli M, Starkweather S, Steffen S, Weber J, Wright PJ, Zwally HJ and Steffen K (2023) The historical Greenland Climate Network (GC-Net) curated and augmented level-1 dataset. *Earth System Science Data*, **15**(12), 5467–5489 (doi: 10.5194/essd-15-5467-2023)
- Weertman J (1973) Creep of ice. *Physics and Chemistry of Ice*, 320–337 (doi: 10.1146/annurev.ea.11.050183.001243)

Zuhr AM, Münch T, Steen-Larsen HC, Hörhold M and Laepple T (2021) Local-scale deposition of surface snow on the Greenland ice sheet. *The Cryosphere*, **15**(10), 4873–4900 (doi: 10.5194/tc-15-4873-2021)

Zwinger T, Greve R, Gagliardini O, Shiraiwa T and Lyly M (2007) A full Stokes-flow thermo-mechanical model for firn and ice applied to the Gorshkov crater glacier, Kamchatka. *Annals of Glaciology*, **45**, 29–37 (doi: <https://doi.org/10.3189/172756407782282543>)

APPENDIX A: WEAK FORMS

The weak or variational forms solved in **FEniCS** are obtained by multiplying the respective PDEs with a weight function, w (or \mathbf{w} if vectorial), and integrating over all space. Terms involving second-order derivatives are integrated by parts the usual way to reduce them to first-order derivatives at the expense of adding boundary integrals. In the following, Ω and Γ will represent the volume and the bounding surface of the model domain, respectively (or in two dimensions, area and bounding line).

For mass conservation, the weak form is

$$\int_{\Omega} \frac{\rho_n - \rho_{n-1}}{\Delta t} w \, d\Omega + \int_{\Omega} (\mathbf{u} \cdot \nabla \rho_n + \rho_n \nabla \cdot \mathbf{u}) w \, d\Omega = 0, \quad (\text{A1})$$

which discretizes the time derivative using an implicit Euler scheme, and subscripts n and $n - 1$ refer to the solution at the new and previous time step, respectively.

The free surface evolution is solved in a similar way and has the weak form

$$\int_{\Gamma_s} \left(\frac{h_{n+1}}{\Delta t} + u_{s,y} \frac{\partial h_{n+1}}{\partial y} \right) w \, d\Gamma = \int_{\Gamma_s} \left(\frac{h_n}{\Delta t} + u_{s,z} + \dot{a} \right) w \, d\Gamma, \quad (\text{A2})$$

where $d\Gamma$ is a line element along the *surface* segment of the boundary, Γ_s .

The weak form of the momentum balance is

$$\int_{\Omega} \boldsymbol{\sigma} : \nabla \mathbf{w} \, d\Omega - \int_{\Gamma} (\boldsymbol{\sigma} \cdot \mathbf{w}) \cdot \mathbf{d}\Gamma = \int_{\Omega} \rho \mathbf{g} \cdot \mathbf{w} \, d\Omega, \quad (\text{A3})$$

where the middle term is the boundary traction integral that vanishes in the problems considered in the main text due to periodic boundaries or specified Dirichlet (velocity) boundary conditions.

Finally, the weak form of the temperature equation is

$$\int_{\Omega} \left[\rho_n c \left(\frac{T_n - T_{n-1}}{\Delta t} + \mathbf{u} \cdot \nabla T_n \right) w + k_T \nabla T_n \cdot \nabla w \right] d\Omega = \int_{\Gamma} k_T w \nabla T_n \cdot \mathbf{d}\Gamma + \int_{\Omega} \boldsymbol{\sigma} : \dot{\boldsymbol{\epsilon}} w d\Omega, \quad (\text{A4})$$

where the second term on the right-hand side accounts for the energy flux through the model domain boundaries that vanishes if boundaries are periodic or Dirichlet (temperature) boundary conditions are specified. Here, the specific heat capacity is

$$c = c_0 + c_1(T - T_0), \quad (\text{A5})$$

where $c_0 = 2127.5 \text{ J kg}^{-1} \text{ K}^{-1}$, $c_1 = 7.253 \text{ J kg}^{-1} \text{ K}^{-2}$, and $T_0 = 273.16 \text{ K}$. The thermal conductivity is

$$k_T = \frac{1 - k_{T,1}\rho + k_{T,2}\rho^2}{1 - k_{T,1}\rho_{\text{ice}} + k_{T,2}\rho_{\text{ice}}^2} k_{T,0} \exp[-\gamma_T T], \quad (\text{A6})$$

where $k_{T,0} = 9.828 \text{ W m}^{-1} \text{ K}^{-1}$, $k_{T,1} = 7.3188 \times 10^{-3} \text{ m}^3 \text{ kg}^{-1}$, $k_{T,2} = 2.3428 \times 10^{-5} \text{ m}^6 \text{ kg}^{-2}$, and $\gamma_T = 5.7 \times 10^{-3} \text{ K}^{-1}$.

Both (A1) and (A4) use linear elements for the unknowns and weight functions (Galerkin method), whereas (A3) uses quadratic elements.

APPENDIX B: RHEOLOGY DERIVATION

The rheology can be derived from plastic potential theory by assuming the effective stress, σ_E , depends on both the first and second stress-tensor invariants, $\text{tr}(\boldsymbol{\sigma})$ and $\boldsymbol{\sigma} : \boldsymbol{\sigma}$, respectively. We follow Duva and Crow (1994) by writing σ_E^2 as the particular linear combination

$$\sigma_E^2 = \frac{3}{2} a \left(\boldsymbol{\sigma} : \boldsymbol{\sigma} - \frac{\text{tr}(\boldsymbol{\sigma})^2}{3} \right) + b \left(\frac{\text{tr}(\boldsymbol{\sigma})}{3} \right)^2, \quad (\text{B1})$$

where a and b are material functions of density. For conformity with Glen's flow law in incompressible limit $\rho \rightarrow \rho_{\text{ice}}$, the relationship between the effective stress and effective strain rate, $\dot{\epsilon}_E$, should follow the power law $\dot{\epsilon}_E = A \sigma_E^n$, corresponding to a Norton–Bailey creep potential. The flow rule then implies (Duva and Crow, 1994)

$$\dot{\boldsymbol{\epsilon}} = \frac{A}{2} \sigma_E^{n-1} \frac{\partial \sigma_E^2}{\partial \boldsymbol{\sigma}}, \quad (\text{B2})$$

where A is the flow-rate factor. The derivatives needed for evaluating $\partial\sigma_E^2/\partial\boldsymbol{\sigma}$ are $\partial(\boldsymbol{\sigma} : \boldsymbol{\sigma})/\partial\boldsymbol{\sigma} = 2\boldsymbol{\sigma}$ and $\partial \text{tr}(\boldsymbol{\sigma})^2/\partial\boldsymbol{\sigma} = 2 \text{tr}(\boldsymbol{\sigma})\mathbf{I}$, and the forward rheology is therefore

$$\dot{\boldsymbol{\epsilon}} = A\sigma_E^{n-1} \left[a \left(\boldsymbol{\sigma} - \frac{\text{tr}(\boldsymbol{\sigma})}{3} \mathbf{I} \right) + \frac{2}{3} b \frac{\text{tr}(\boldsymbol{\sigma})}{3} \frac{\mathbf{I}}{3} \right], \quad (\text{B3})$$

$$\sigma_E^2 = \frac{a}{2} \left(\boldsymbol{\sigma} : \boldsymbol{\sigma} - \frac{\text{tr}(\boldsymbol{\sigma})^2}{3} \right) + \frac{b}{3} \left(\frac{\text{tr}(\boldsymbol{\sigma})}{3} \right)^2, \quad (\text{B4})$$

where a factor of $3^{(n+1)/2}/2$ has been absorbed into A . Notice that Glen's incompressible flow law is recovered in the limit $a = 1$ and $b = 0$.

The inverse rheology can be derived by vectorizing (B3) according to

$$\mathcal{V}(\mathbf{X}) = [X_{11}, X_{21}, X_{31}, X_{12}, X_{22}, X_{32}, X_{13}, X_{23}, X_{33}]^T, \quad (\text{B5})$$

giving

$$\mathcal{V}(\dot{\boldsymbol{\epsilon}}) = A\sigma_E^{n-1} \mathbf{P} \cdot \mathcal{V}(\boldsymbol{\sigma}), \quad (\text{B6})$$

where

$$\mathbf{P} = a\mathbf{I}_9 + \left(\frac{2b}{3^3} - \frac{a}{3} \right) \mathcal{V}(\mathbf{I}) \otimes \mathcal{V}(\mathbf{I}). \quad (\text{B7})$$

Here, \otimes is the generalized outer product (Kronecker product), and $\text{tr}(\boldsymbol{\sigma}) = \mathbf{I} : \boldsymbol{\sigma} = \mathcal{V}(\mathbf{I}) \cdot \mathcal{V}(\boldsymbol{\sigma})$ was used.

The inverse rheology is then given by $\boldsymbol{\sigma} = \mathcal{V}^{-1}(\mathbf{P}^{-1}\mathcal{V}(\dot{\boldsymbol{\epsilon}}))$, or in tensorial form as written in equation (4).

LIST OF FIGURES

1	Coefficient functions a (red) and b (blue) proposed by Gagliardini and Meyssonier (1997) and Zwinger and others (2007) for $n = 3$	38
2	Sites of Greenlandic ice cores used to validate the GM97 rheology and determine k . Satellite-derived velocities from the MEaSUREs program are shown in colored contours (Howat, 2020).	39
3	Model–observation RMSE of Greenlandic density profiles for $k \in [1, 1000]$. All the curves keep increasing monotonically from $k = 1000$ and onwards (not shown).	40
4	Modeled Site 2 density profiles for various k (colored lines) compared to observations (Bréant and others (2017); gray dots). The effect of a given k is most evident near the surface: the higher the value of k , the faster the near-surface densification. For $\hat{\rho} > 0.8$, the model generally underestimates densities at a given depth for all k	41
5	NEEM balloon trench geometry two months after construction on August 7th, 2012 (a) and three years later on May 27th, 2015 (b). No picture of the trench was available for the model target year, 2014, so 2015 is shown instead. Moreover, pictures show the northern end, whereas we used the trench geometry of the southern end that was most consistently measured during the experiment (no pictures available). Pictures were kindly provided by J. P. Steffensen and reprinted with permission according to the NEEM ice-core project media waiver.	42
6	Zoom-in of the initial geometry and density field of the NEEM trench model. High-density snow was back filled into the balloon trench, creating a hardened shell surrounding the tunnel compared to the background density field.	43
7	Modeled evolution of the NEEM tunnel from June 10th, 2012, to May 27th, 2014. (a) Evolution of the tunnel height for different values of k (line colors) and thermal scenarios (line styles). (b) Corresponding tunnel cross sections at the end of the simulation. The larger and smaller black curves in panel b represent the initial and final measured tunnel dimensions, respectively. All simulations are thermodynamically coupled but differ in the surface temperature boundary condition. Experiments denoted by solid and dash-dotted lines use measured time-evolving surface temperatures, whereas dashed lines denote experiments where the average surface temperature was imposed (resulting in practically isothermal conditions). The <i>hot trench</i> scenario includes an initially hotter-than-average backfilled trench (-5°C), which aims to be more representative of the real initial conditions. The three grey dots in panel a show measured tunnel dimensions (Steffensen, 2014). The background red line in panel a shows the smoothed hourly temperature record from the site’s weather station that is part of GC-Net (Vandecrux and others, 2023). The original record contains positive temperatures in the first summer (not shown due to smoothing).	44
8	ArcticDEM surface topography upstream of NEGIS, hillshaded using the 3D visualization software <i>Blender</i> . The EGRIP drill site is located at the black ball. Note that North has been rotated 135° clockwise to make the view of the ice-stream margin most clear, hence flow is towards the bottom part of the figure.	45
9	Satellite-derived surface velocities around EastGRIP from the MEaSUREs program (Howat, 2020) and transect (white line) of the 79 geophones used for the seismic survey performed by Riverman and others (2019).	46

10 (a): Absolute value of the smoothed horizontal strain-rate components along the NEGIS seismic transect (solid lines), and the effective horizontal strain rate $\dot{\epsilon}_{\text{eff}}$ by Oraschewski and Grinsted (2022), which includes the upstream history, too. (b): Modeled (red and yellow lines) and GPS-measured (blue line) surface elevation anomaly profile along the seismic transect (Riverman and others, 2019). Solid and dashed lines represent isothermal and hot shear-margin experiments, respectively. (c): Modeled bubble close-off (BCO) depth profiles (lines) plotted on top of the observed density field by Riverman and others (2019). The white line shows the observed $\rho = 830 \text{ kg m}^{-3}$ BCO depth contour, and the violet line shows the BCO depth modeled by Oraschewski and Grinsted (OG22). Vertical solid lines show the modeled shear-margin center points (deepest troughs), and dashed lines show the horizontal extent of the imposed 6°C temperature anomaly in the shear margins. The along flow dimension, x , is pointing out of the plane. 47

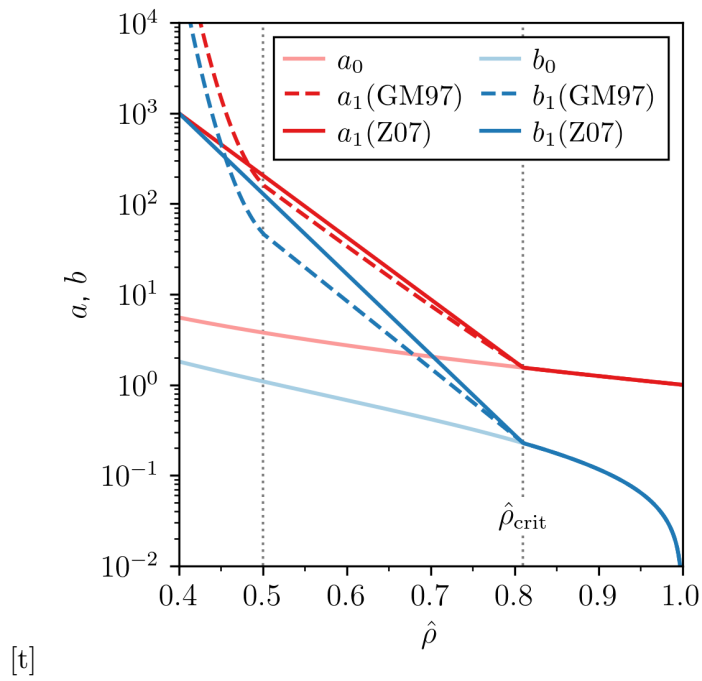


Fig. 1. Coefficient functions a (red) and b (blue) proposed by Gagliardini and Meyssonnier (1997) and Zwinger and others (2007) for $n = 3$.

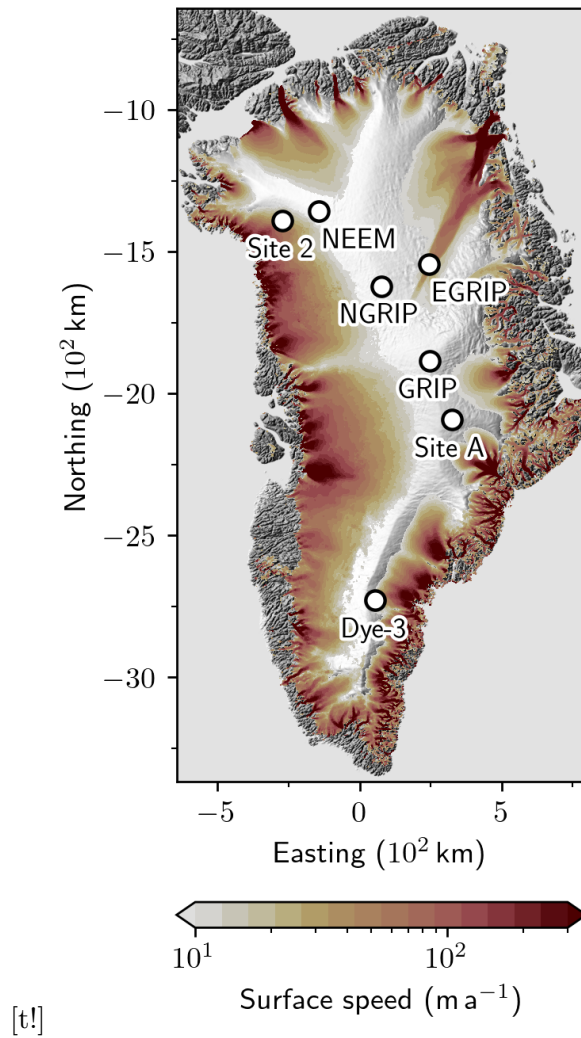


Fig. 2. Sites of Greenlandic ice cores used to validate the GM97 rheology and determine k . Satellite-derived velocities from the MEaSURES program are shown in colored contours (Howat, 2020).

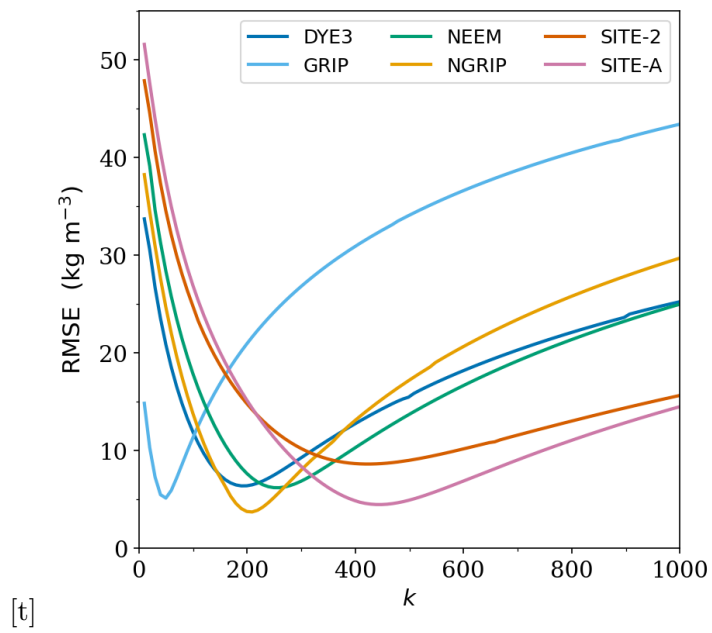


Fig. 3. Model–observation RMSE of Greenlandic density profiles for $k \in [1, 1000]$. All the curves keep increasing monotonically from $k = 1000$ and onwards (not shown).

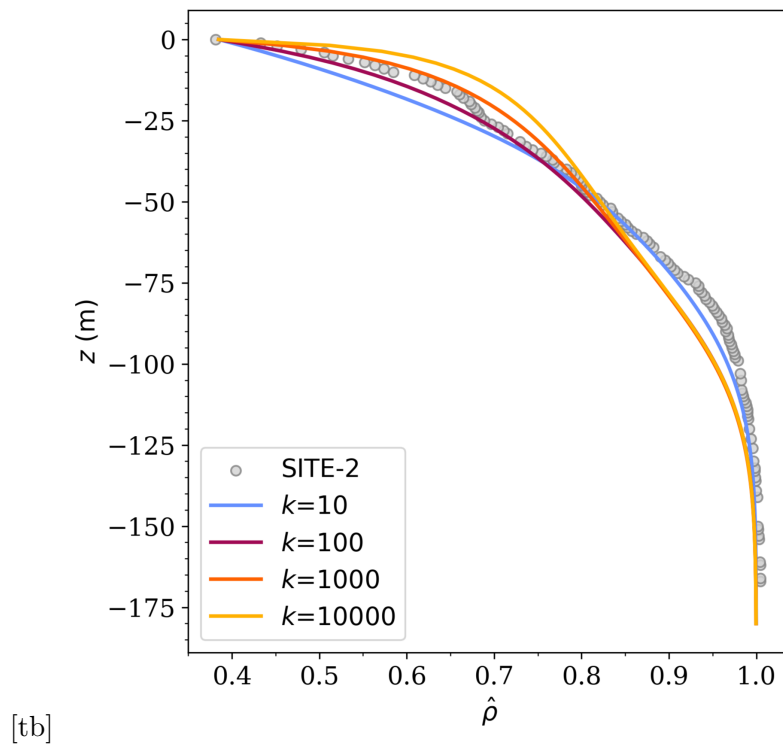


Fig. 4. Modeled Site 2 density profiles for various k (colored lines) compared to observations (Bréant and others (2017); gray dots). The effect of a given k is most evident near the surface: the higher the value of k , the faster the near-surface densification. For $\hat{\rho} > 0.8$, the model generally underestimates densities at a given depth for all k .

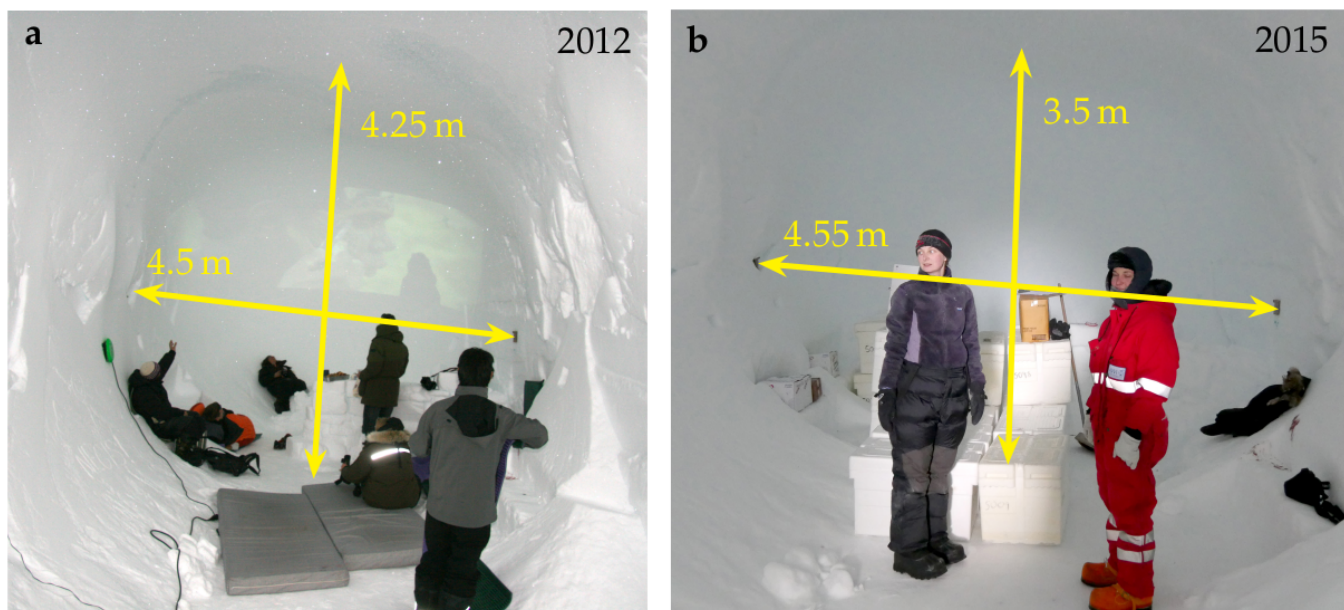


Fig. 5. NEEM balloon trench geometry two months after construction on August 7th, 2012 (a) and three years later on May 27th, 2015 (b). No picture of the trench was available for the model target year, 2014, so 2015 is shown instead. Moreover, pictures show the northern end, whereas we used the trench geometry of the southern end that was most consistently measured during the experiment (no pictures available). Pictures were kindly provided by J. P. Steffensen and reprinted with permission according to the NEEM ice-core project media waiver.

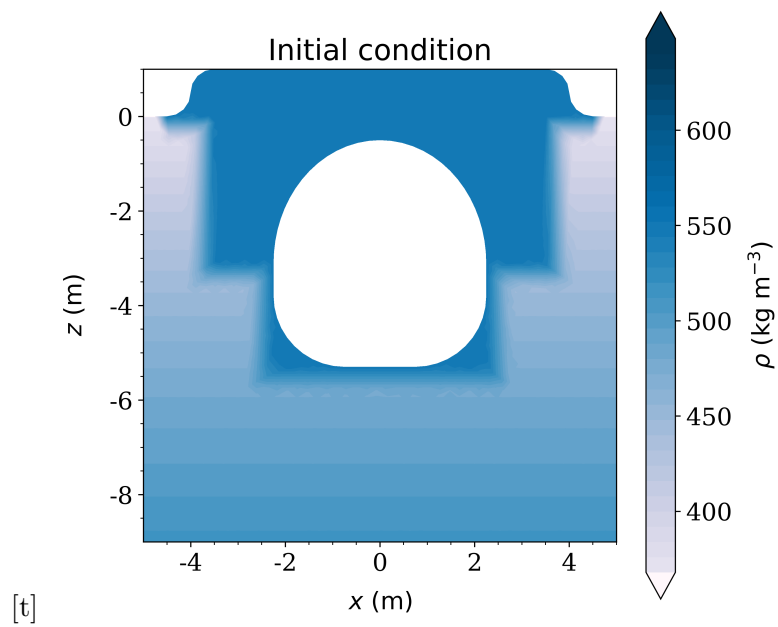


Fig. 6. Zoom-in of the initial geometry and density field of the NEEM trench model. High-density snow was back filled into the balloon trench, creating a hardened shell surrounding the tunnel compared to the background density field.

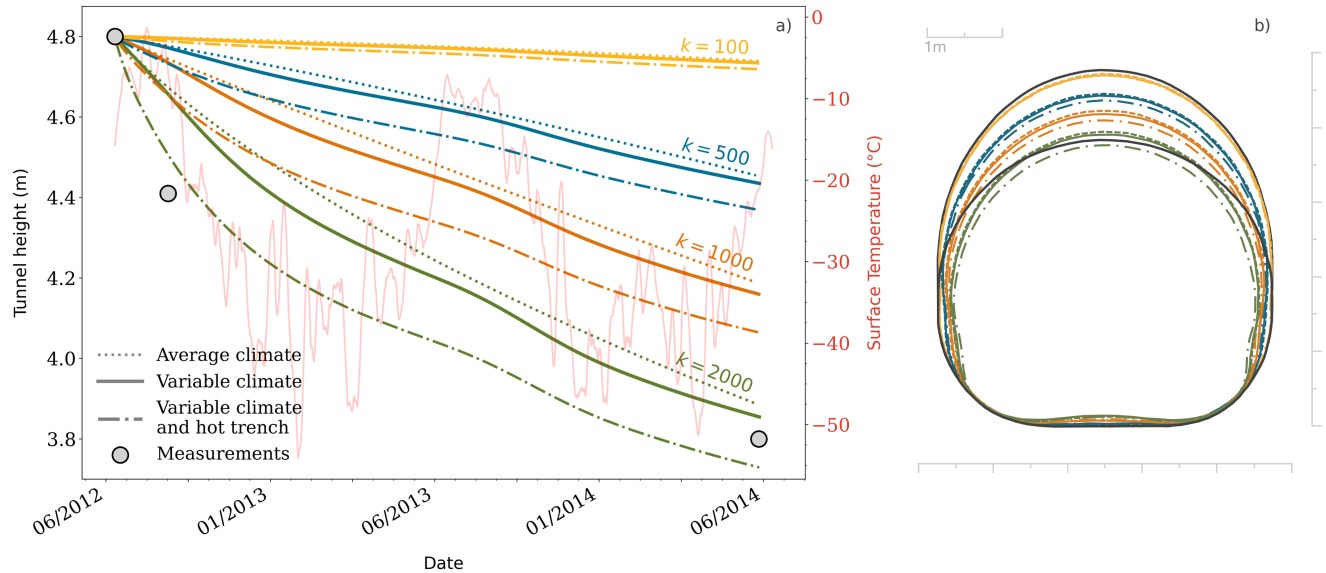


Fig. 7. Modeled evolution of the NEEM tunnel from June 10th, 2012, to May 27th, 2014. (a) Evolution of the tunnel height for different values of k (line colors) and thermal scenarios (line styles). (b) Corresponding tunnel cross sections at the end of the simulation. The larger and smaller black curves in panel *b* represent the initial and final measured tunnel dimensions, respectively. All simulations are thermodynamically coupled but differ in the surface temperature boundary condition. Experiments denoted by solid and dash-dotted lines use measured time-evolving surface temperatures, whereas dashed lines denote experiments where the average surface temperature was imposed (resulting in practically isothermal conditions). The *hot trench* scenario includes an initially hotter-than-average backfilled trench ($-5\text{ }^{\circ}\text{C}$), which aims to be more representative of the real initial conditions. The three grey dots in panel *a* show measured tunnel dimensions (Steffensen, 2014). The background red line in panel *a* shows the smoothed hourly temperature record from the site’s weather station that is part of GC-Net (Vandecrux and others, 2023). The original record contains positive temperatures in the first summer (not shown due to smoothing).

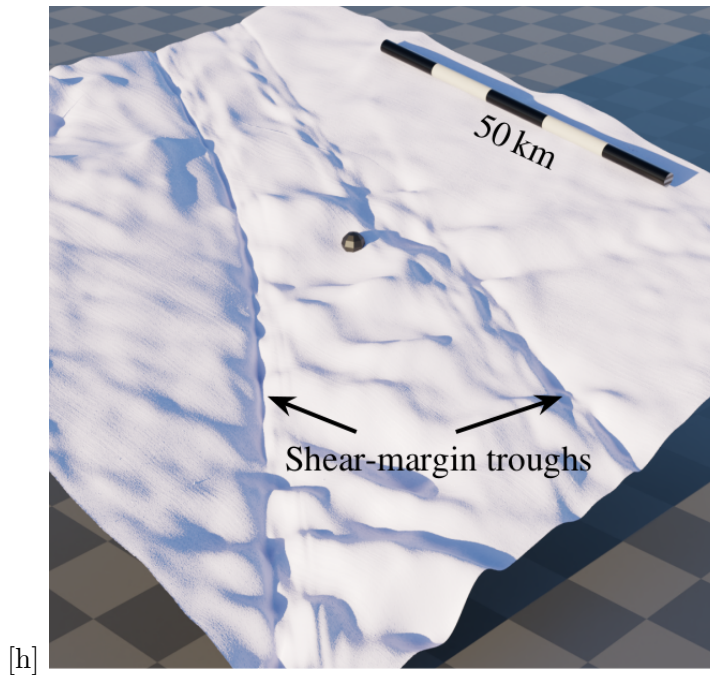


Fig. 8. ArcticDEM surface topography upstream of NEGIS, hillshaded using the 3D visualization software *Blender*. The EGRIP drill site is located at the black ball. Note that North has been rotated 135° clockwise to make the view of the ice-stream margin most clear, hence flow is towards the bottom part of the figure.

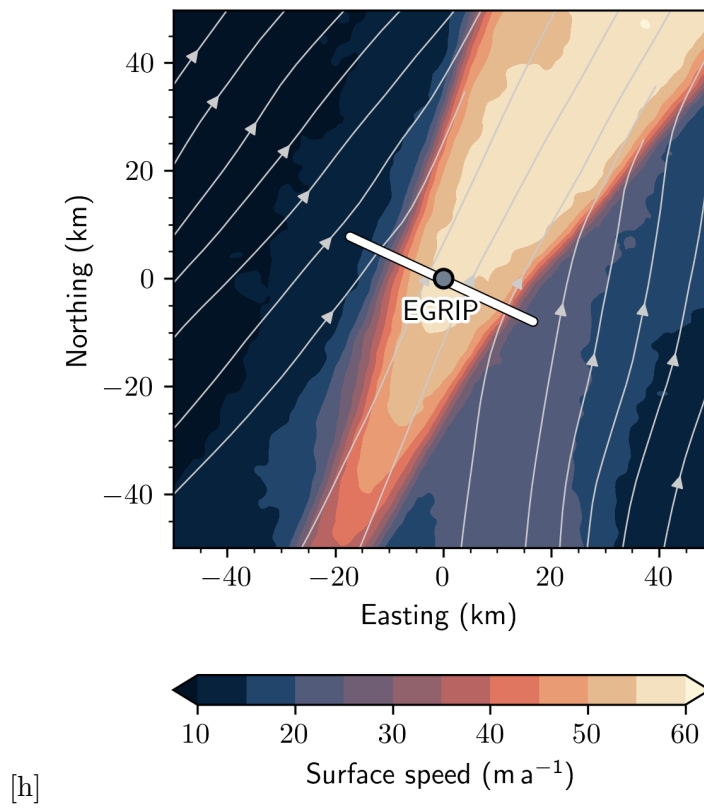


Fig. 9. Satellite-derived surface velocities around EastGRIP from the MEaSURES program (Howat, 2020) and transect (white line) of the 79 geophones used for the seismic survey performed by Riverman and others (2019).

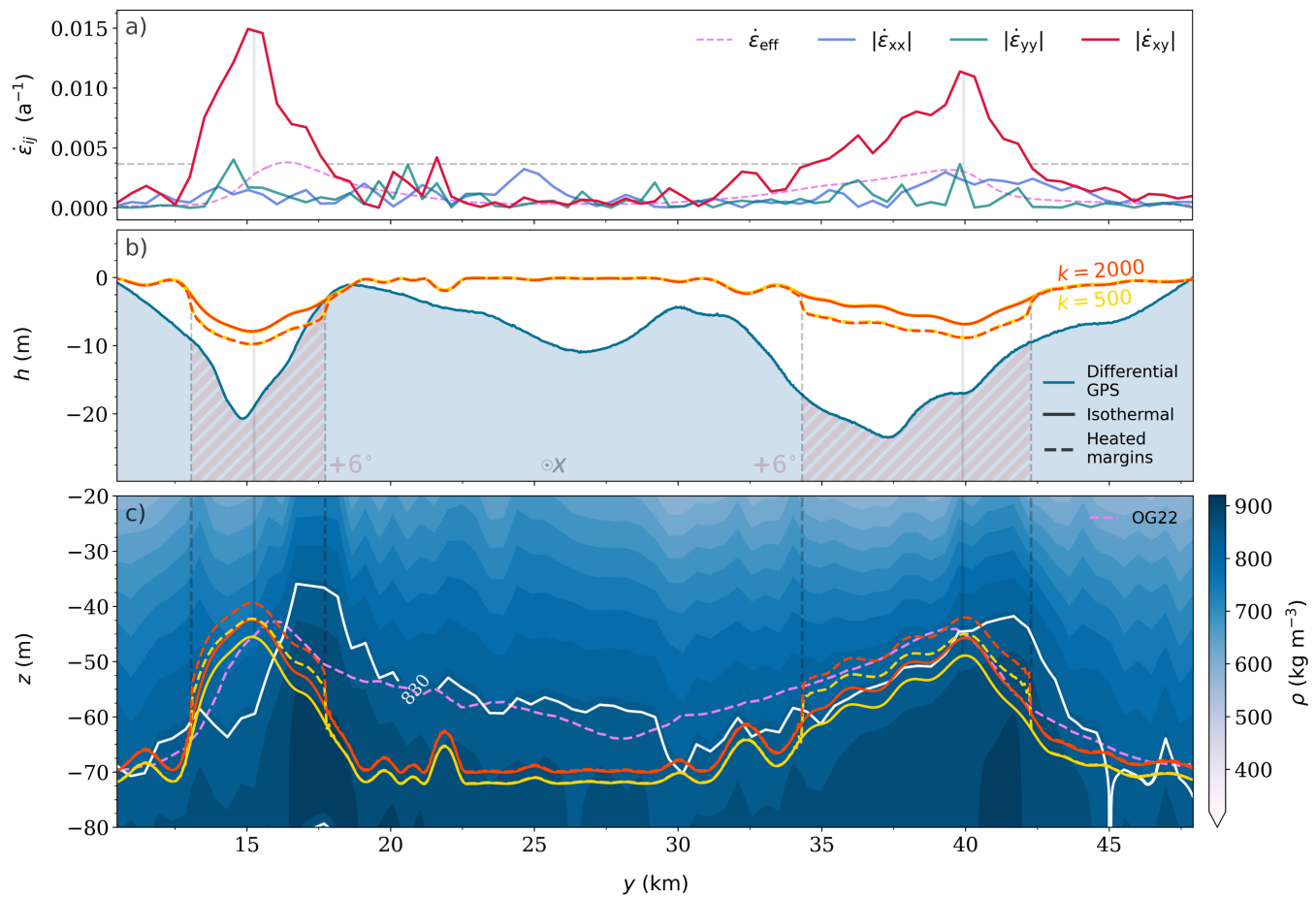


Fig. 10. (a): Absolute value of the smoothed horizontal strain-rate components along the NEGIS seismic transect (solid lines), and the effective horizontal strain rate $\dot{\epsilon}_{\text{eff}}$ by Oraschewski and Grinsted (2022), which includes the upstream history, too. (b): Modeled (red and yellow lines) and GPS-measured (blue line) surface elevation anomaly profile along the seismic transect (Riverman and others, 2019). Solid and dashed lines represent isothermal and hot shear-margin experiments, respectively. (c): Modeled bubble close-off (BCO) depth profiles (lines) plotted on top of the observed density field by Riverman and others (2019). The white line shows the observed $\rho = 830 \text{ kg m}^{-3}$ BCO depth contour, and the violet line shows the BCO depth modeled by Oraschewski and Grinsted (OG22). Vertical solid lines show the modeled shear-margin center points (deepest troughs), and dashed lines show the horizontal extent of the imposed 6°C temperature anomaly in the shear margins. The along flow dimension, x , is pointing out of the plane.