

Structural evidence of diffuse growth and parenchymatous cell division in the cortex of the umbilicate lichen *Lasallia pustulata*

William B. SANDERS and Asunción DE LOS RÍOS

Abstract: How growth is distributed within the morphologically diverse thalli of lichens is still poorly known and the anatomical mechanisms involved are not well understood. This work applies electron microscopy (SEM and TEM) to examine cell- and tissue-level events in the umbilicate thallus of *Lasallia pustulata*, whose pattern of expansion was the subject of a previous field study. Stacks of epinecral tissue accumulating at the thallus surface showed broadening bases and recurring rupture attributable to diffuse expansion of the living tissue below. Cortical cells, dividing anticlinally, adjoined septa to previous septa, indicating parenchymatous divisions. These observations are all consistent with previous contentions that mature, organized tissues within the thallus are capable of continued diffuse growth. They provide a developmental explanation for the morphology of the epinecral layer and suggest that anatomical characteristics may be helpful in recognizing diffuse growth patterns. Parenchymatous cell divisions, believed until recently to never occur in lichen thallus tissues, are shown to play a developmental role in the diffuse growth of the umbilicate lichen thallus.

Key words: anatomy, epinecral layer, histogenetic processes, morphogenetic processes, septa

Accepted for publication 22 March 2018

Introduction

Our understanding of where and how growth occurs in lichen thalli is limited. Previously, lichen growth was assumed to be restricted to the margins and apices of thalli (Hill 1981; Hale 1983), consistent with the notion that the component fungal hyphae grow exclusively at their tips (but see Voisey 2010). In crustose lichens, and foliose taxa that are closely attached to the substratum, expansion may indeed be limited mainly to a marginal zone (Hale 1970; Armstrong 1974; Fisher & Proctor 1978). In foliose lichens with less restrictive attachment, however, much of the thallus may contribute to expansion, as sequential images (Larsson & Gauslaa 2009) and growth rates proportional

to size suggest (e.g. Rhoades 1977), at least during early stages of development. In the few fruticose lichens studied, all of which are long pendulous taxa, growth occurs diffusely throughout the thallus, while morphogenetic and histogenetic processes are localized at branch apices (Sanders 1989, 1992; Rolstad & Rolstad 2008; Sanders & de los Ríos 2012; Sanders & Tokamov 2015). However, because lichen thalli are so diverse, many more growth studies are needed before we can assess what generalizations, if any, are warranted.

Particularly intriguing in this regard are the umbilicate lichens, whose laminar, dorsiventral thalli attach to their rock substratum by a central holdfast. In the opinion of Honninger (2008), their growth patterns are the least understood. Based on carbon fixation rates that varied irregularly throughout individual thalli of *Umbilicaria*, Larson (1983) inferred that thallus growth is most likely diffuse. Anatomical study of the umbilicate genus *Lasallia* led Valladares & Ascaso (1994) to postulate that growth occurs mainly in a broad intermediate zone between

W. B. Sanders: Department of Biological Sciences, Florida Gulf Coast University, 10501 FGCU Blvd, Ft. Myers, Florida 33965-6565, USA. Email: wsanders@fgcu.edu.

A. De Los Ríos: Departamento de Biogeoquímica y Ecología Microbiana, Museo Nacional de Ciencias Naturales (CSIC), Serrano 115 dpdo, Madrid 28006, Spain.

the umbilicus and the margin. Hestmark (1997a) measured the displacement of thal-
lus pustules in *L. pustulata* over a four-year
period, reporting a diffuse pattern of growth
consistent with the inferences of Larson
(1983) and Valladares & Ascaso (1994). His
description of pustules arising near the cen-
tral umbilicus and moving radially outwards
over time suggested a pattern of morpho-
genesis quite different from any proposed
previously in macrolichens, where morpho-
genetic processes are typically localized at
apices and margins (e.g. Sanders 1992,
1993). However, no sequential photographs
were provided. While geometric increases in
length over time were observed in the fruti-
cose *Usnea longissima* (Rolstad & Rolstad
2008), Hestmark (1997b) found no correla-
tion between thallus size and diameter
increments over a four-year period in
L. pustulata. To better understand the struc-
tural basis of growth in this lichen, we explore
features of tissue behaviour and cell pro-
liferation that would be expected to occur
under conditions of diffuse expansion as
reported by Hestmark (1997a).

Lasallia pustulata has a stratified (hetero-
merous) thallus with several distinct tissue
layers. A cortex of moderately thick-walled,
approximately isodiametric cells covers upper
and lower surfaces. At its exterior, especially
on the upper surface, dead cortical cells accu-
mulate as a thick epinecral layer (Fig. 1),
reportedly serving to reflect high light intensity
and/or increase water absorption (Büdel 1990;
Valladares 1994; Dietz *et al.* 2000). Dead cells
are sloughed off at the surface and resupplied
by division of the living cortical cells below.
If the living tissue layer is also increasing diffu-
sely in surface area, the epinecral accumula-
tions above should develop ruptures in regular
succession because dead cells cannot grow or
divide to keep pace with the expanding tissue
beneath. Furthermore, one would expect the
ruptured sectors of epinecral tissue to have a
tapered form, narrower in the upper portions
and widening towards the base, due to the
ever-increasing surface area of the tissue con-
tributed from below. The anatomical basis of
growth may also be evident in the pattern of
cortical cell divisions. Diffuse growth would

likely require isodiametric cortical cells to
proliferate laterally within the plane of expan-
sion (new anticlinal cross walls) to increase the
number of cells in the layer, in addition to the
vertical divisions (new periclinal cross walls)
that supply the overlying epinecral tissue. Such
division patterns would directly contradict the
long-standing paradigm that vegetative tissues
in fungi and lichens are never parenchymatous
(Jahns 1973, 1988; Moore 1998). However,
a recent study demonstrated that paren-
chymatous divisions do indeed occur routi-
nely in the cortices of at least some familiar
lichens (Sanders & de los Ríos 2017). That
study used TEM to distinguish walls of septal
origin and show that new septa adjoin them,
which is central to the concept of paren-
chymatous division (Schwendener 1873;
Fritsch 1935). In the present work, we exam-
ine anatomical and ultrastructural features in
L. pustulata to determine whether their devel-
opment is consistent with predictions based on
the diffuse growth model (Larson 1983;
Valladares & Ascaso 1994; Hestmark 1997a).

Materials and Methods

Thalli of *Lasallia pustulata* were collected air-dry near El
Escorial and Pinilla del Buitrago, Madrid, Spain, in
June 2017. Specimens processed for TEM were first
hydrated with distilled water using a spray mister and
maintained in covered Petri dishes for 24 h. Moist thalli
were then hand-sectioned with a razor blade to a thick-
ness of *c.* 0.25 mm to facilitate chemical penetration.
Tissue was chosen from a pustular region roughly
equidistant from the margin and the umbilicus.
Sections were placed immediately in fixative solution
(2.5% v/v glutaraldehyde in phosphate buffer), followed
by postfixation in 1% w/v OsO₄ solution, dehydration in
an ethanol series, infiltration with Spurr's low-viscosity
resin and subsequent polymerization, according to de
los Ríos & Ascaso (2002). Ultrathin sections were cut *c.*
79 nm thick using a Leica EM UC-6 ultramicrotome
(Leica Microsystems GmbH, Wetzlar, Germany).
Specimens were oriented so as to section the upper
cortex paradermally (i.e. parallel to the surface, the
plane in which thallus expansion takes place). Sections
were post-stained with lead citrate (de los Ríos & Ascaso
2002) then examined in a JEM-1011 transmission
electron microscope (JEOL, Tokyo, Japan). For SEM
imaging, air-dried specimen fragments were sputter-
coated with gold and observed with an FEI Inspect
scanning electron microscope (Thermo Fisher Scien-
tific, Waltham, Massachusetts, USA), using the sec-
ondary electron imaging mode.

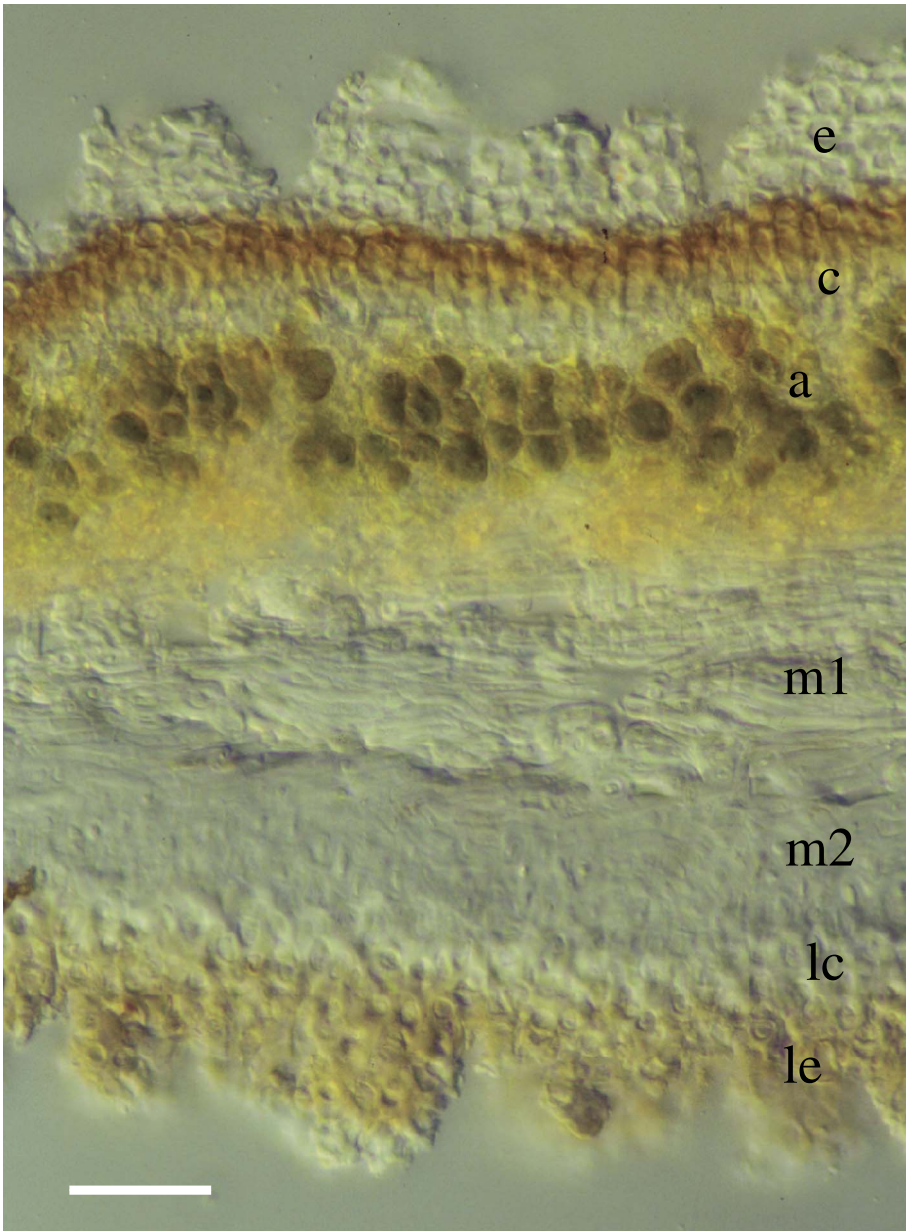


FIG. 1. *Lasallia pustulata*. TS thallus (LM). Abbreviations: e, epicortex; c, upper cortex; a, algal layer; m1, lax medulla; m2, dense medulla; lc, lower cortex; le, epinecral accumulations of lower surface. Scale = 20 μ m.

Results

The upper surface of the *L. pustulata* thallus was uniformly covered by adjacent, spine-like, roughly cone-shaped epinecral accumulations

with somewhat angular surfaces. They were distinctly tapered from their broad base, which contacts those of adjacent spines, to their narrowing, irregular apex (Fig. 2). Empty

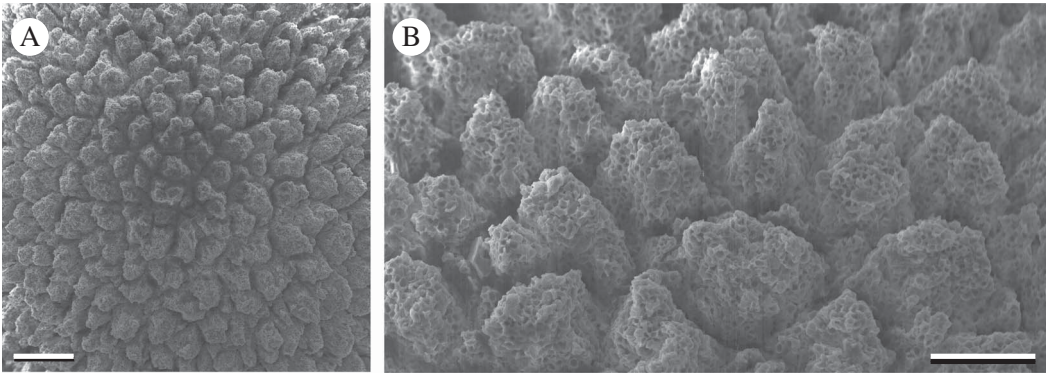


FIG. 2. *Lasallia pustulata*. Upper surface (SEM). Scales: A = 100 μm ; B = 50 μm .

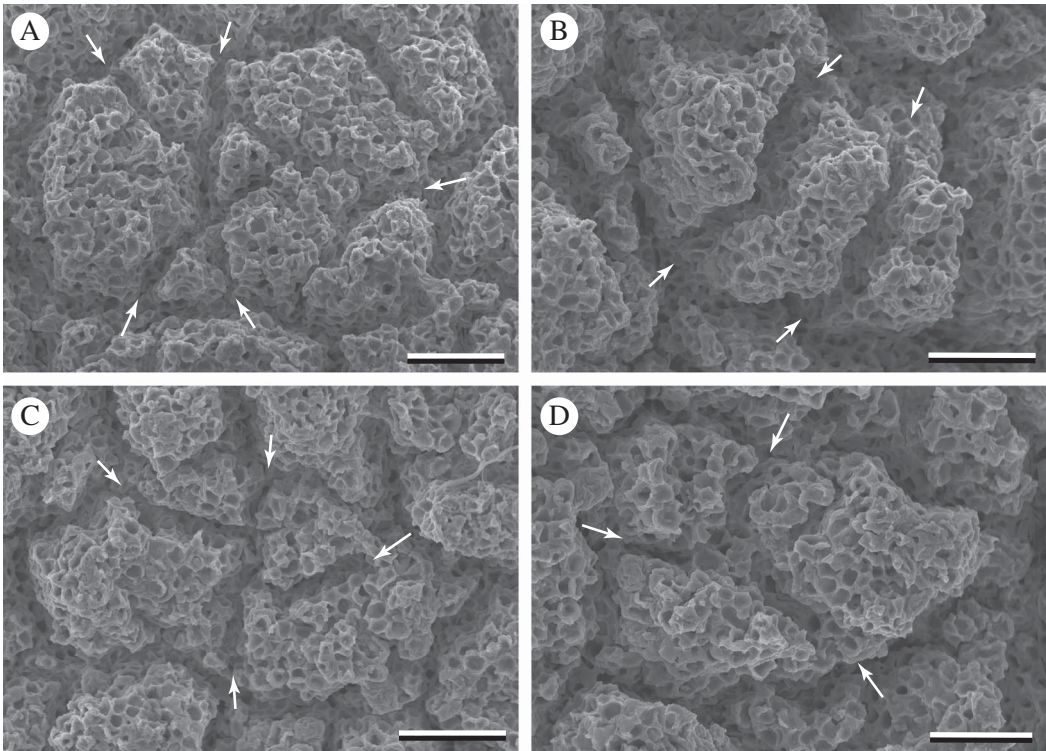


FIG. 3. *Lasallia pustulata*. Upper surface (SEM). Arrows are placed at perimeter of an epinecral tuft, while arrow direction indicates fissures which subsequently subdivided the structure. Scales: A–C = 25 μm ; D = 20 μm .

compartments of dead cells were visible with SEM at higher magnification (Figs 2B & 3). One could distinguish the basal outlines of what were formerly individual tufts of

epinecral tissue, now subdivided by further tissue rupture (arrows in Fig. 3). On the lower surface, epinecral accumulations were less extensive and cell walls thicker but a

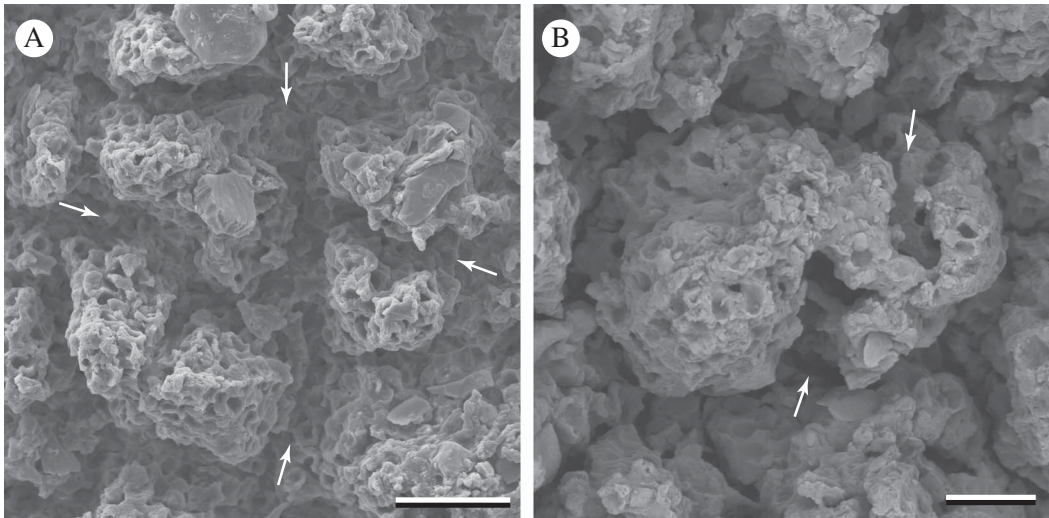


FIG. 4. *Lasallia pustulata*. Lower surface (SEM). Arrows indicate fissures forming within epicortical accumulations. Scales: A = 20 μm ; B = 10 μm .

comparable pattern of tissue rupture was observed (Fig. 4).

TEM images of paradermal sections showed anticlinal divisions of cells within the plane of the thallus surface. An evanescent but still recognizable median layer allowed septal walls to be distinguished. New septa were clearly adjoined to previous septa (Fig. 5). At these junctures, the sequence of wall formation was evident: the newer septum adjoined to the outer wall layers of a previous septum, and therefore its median layer did not make contact with that of the older wall (arrowheads in Fig. 5).

Discussion

A number of published studies have explored the anatomy of the *Umbilicariaceae* from structural, functional or biosystematic perspectives (Frey 1929; Scott & Larson 1983; Krog & Swinscow 1986; Sancho & Balaguer 1989; Valladares & Ascaso 1994; Schroeter & Scheidegger 1995; Valladares *et al.* 1993, 1998; Valladares & Sancho 1995; de los Ríos *et al.* 1999). The “areolate-echinate” shape of the epicortical accumulations in *Lasallia* (Sancho & Crespo 1989) was noted and the

ecophysiological significance of the fissures that delimit them was discussed (Valladares 1994). However, the developmental context of these structural features does not appear to have been considered previously. The broadening bases of the epinecral accumulations and their repeated sub-fragmentation through tissue rupture are predictable results of the underlying tissue’s continued expansion in surface area (Figs 2–4). Evidence of cortical septa adjoining perpendicularly to each other within the plane of the thallus surface (Fig. 5) indicates growth processes at the cellular level that have not been proposed previously for umbilicate lichens. These results are consistent with Hestmark’s (1997a) report of diffuse growth in *Lasallia* and may also be applicable to other members of the family that show a variety of surface tissue rupture patterns (Frey 1929; Scott & Larson 1983). Other foliose and squamulose lichen thalli with fissured epinecral layers and/or thorn-like tapered stacks of cortical material (e.g. Timdal 1984; Vogel 1955; Heidmarsson 1996) might also show diffuse growth patterns and merit further investigation from a developmental perspective.

The basal broadening and fissuring of epinecral accumulations can be compared in a

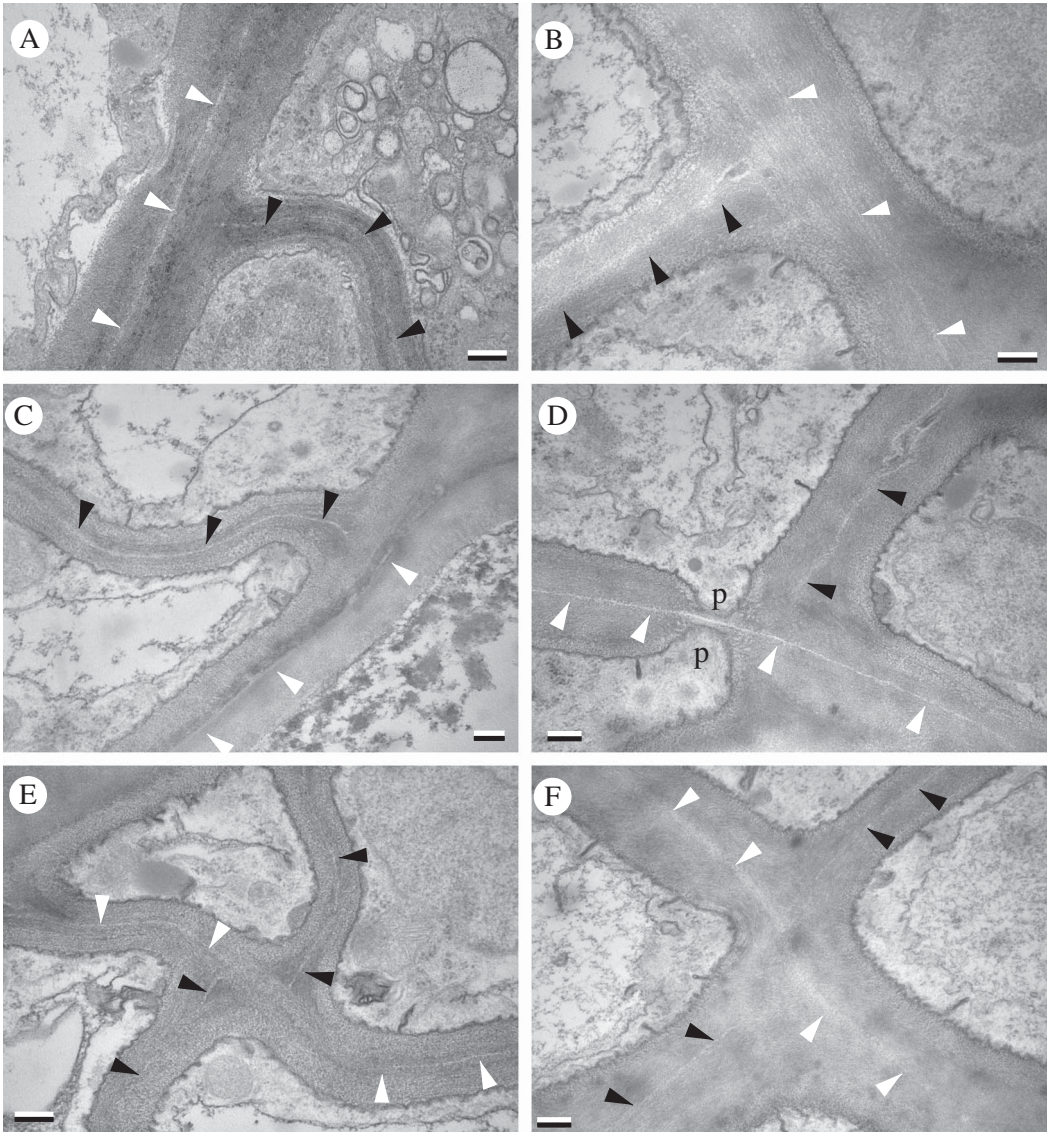


FIG. 5. *Lasallia pustulata*. Paradermal sections through upper cortex (TEM). Black arrowheads indicate median layer of newer septa; white arrowheads indicate median layer of previous septa to which newer septa adjoin; p = septal pore. Scales: A–F = 0.25 μ m.

general way to the formation of bark by cambial activity in dicotyledonous plants. In both cases, layers of dead tissue are augmented continuously by divisions of living tissue beneath, whose growth in surface area causes repeated ruptures in the mature and moribund tissues accumulating above them. In the fruticose lichen *Usnea longissima*, diffuse

growth of thallus axes (Rolstad & Rolstad 2008) involves the continued elongation of the medullary cord tissue which provides the thallus with mechanical support. Here too, diffuse elongation disrupts overlying tissue, in this case the living cortex and photobiont layers, from whose fragments the lateral branches or fibrils emerge (Sanders & de los Ríos

2012). Tissue rupture may be further augmented by the regular cycles of hydration and dehydration to which the poikilohydric thallus is continually subjected. The other fruticose lichens known to have diffuse growth are long pendulous species of *Ramalina* (Sanders 1989; Sanders & Tokamov 2015); their expanding structural tissues are cortical, with no epinecral layers produced.

Diffuse growth of lichen tissue challenges our understanding of how fungal growth occurs at a cellular level. In *Ramalina menziesii*, *R. usnea* and *U. longissima*, supportive (mechanical) tissue consists of prosoplectenchyma oriented longitudinally along the expanding thallus axes; hyphal tip growth cannot account for diffuse elongation of such tissue. In micrographs of these lichen tissues, cell walls appear to be continuously disrupted by tissue expansion and replaced by new wall layers from within. These massive accumulations of wall material form a kind of intercellular matrix, but the concentric layers evident in transverse section can be attributed to the individual cells that produced them (Sanders & Ascaso 1995; Sanders & de los Ríos 2012). Lichen cortices with isodiametric cells, by contrast, may accommodate diffuse growth by proliferating via parenchymatous divisions (Sanders & de los Ríos 2017), as is evident here in *Lasallia pustulata* (Fig. 5).

Our results suggest that portions of lichen thalli might transition to parenchymatous division patterns while other thallus layers presumably remain plectenchymatous. Vuillemin (1912) proposed the term “merenchyma” for tissue arising (secondarily?) via three-dimensional divisions in fungi, as opposed to synenchyma, arising by cell fusion. Significantly, he pointed out that de Bary’s application of the term “pseudo-tissue” to fungal structures of filamentous origin inconveniently restricts the concept of tissue itself to those originating from parenchymatous division. We would strongly argue that the term tissue should maintain its broad sense, free of any developmental implications. Without such a concept there is no way to refer to organized arrangements of cells without making unwarranted assumptions

about development when no such data are available. Such implicit assumptions are probably the main reason why parenchymatous divisions in lichen “plectenchyma” have remained unacknowledged for so long.

Whether parenchymatous divisions in the cortex of *L. pustulata* occur uniformly or in a locally variable pattern remains to be determined. Certainly, the protruding morphology of pustules suggests that tissue expansion in those structures might be greater or faster than that of the interpustular regions, at least at some point in their development. A separate but equally interesting question is how the remaining thallus tissues, including both lax and prosoplectenchymatous medullary layers, are themselves accommodating diffuse growth at the cellular level. The potential diversity of thallus and tissue growth patterns among lichens is of considerable mycological interest as the few studies carried out so far have revealed patterns of cell behaviour strikingly different from those characteristic of typical fungal hyphae.

Funding was provided by a Spanish Ministry of Economy and Competitiveness grant (CTM2015-64728-C2-2-R to A. de los Ríos). We thank Cristina Patiño (Centro Nacional de Biotecnología, Universidad Autónoma, Madrid) for accommodating the TEM work and Javier Bueno Chamorro for preparing the ultrathin sections with great skill and patience. Alberto Jorge García (MNCN Microscopy Service) kindly provided technical assistance with the SEM. The manuscript benefited from critical review by G. Hestmark, C. Scheidegger and an anonymous referee.

REFERENCES

- Armstrong, R. A. (1974) Growth phases in the life of a lichen thallus. *New Phytologist* **73**: 913–918.
- Büdel, B. (1990) Anatomical adaptations to the semi-arid/arid environment in the lichen genus. *Peltula*. *Bibliotheca Lichenologica* **38**: 47–61.
- de los Ríos, A. & Ascaso, C. (2002) Preparative techniques for transmission electron microscopy and confocal laser scanning microscopy of lichens. In *Protocols in Lichenology. Culturing, Biochemistry, Ecophysiology and Use in Biomonitoring* (I. C. Kranner, R. P. Beckett & A. K. Varma, eds): 87–117. Berlin: Springer-Verlag.
- de los Ríos, A., Ascaso, C. & Wierzos, J. (1999) Study of lichens with different state of hydration by the combination of low temperature scanning electron

- and confocal laser scanning microscopies. *International Microbiology* **2**: 251–257.
- Dietz, S., Büdel, B., Lange, O. L. & Bilger, W. (2000) Transmittance of light through the cortex of lichens from contrasting habitats. *Bibliotheca Lichenologica* **75**: 171–182.
- Fisher, P. J. & Proctor, M. C. F. (1978) Observations on a season's growth in *Parmelia caperata* and *P. sulcata* in South Devon. *Lichenologist* **10**: 81–89.
- Frey, E. (1929) Beiträge zur Biologie, Morphologie und Systematik der Umbilicariaceen. *Hedwigia* **69**: 219–252.
- Fritsch, F. E. (1935) *The Structure and Reproduction of the Algae* Vol. I. London: Cambridge University Press.
- Hale, M. E. (1970) Single-lobe growth-rate patterns in the lichen *Parmelia caperata*. *Bryologist* **73**: 72–81.
- Hale, M. E. (1983) *The Biology of Lichens*, 3rd Edition. London: Edward Arnold.
- Heidmarsson, S. (1996) Pruina as a taxonomic character in the lichen genus *Dermatocarpon*. *Bryologist* **99**: 315–320.
- Hestmark, G. (1997a) Growth from the centre in an umbilicate lichen. *Lichenologist* **29**: 379–383.
- Hestmark, G. (1997b) Gap-dynamics, recruitment and individual growth in populations of *Lasallia pustulata*. *Mycological Research* **101**: 1273–1280.
- Hill, D. J. (1981) The growth of lichens with special reference to the modelling of circular thalli. *Lichenologist* **13**: 265–287.
- Honegger, R. (2008) Morphogenesis. In *Lichen Biology*, 2nd Edition (T. H. Nash III, ed.): 69–93. Cambridge: Cambridge University Press.
- Jahns, H. M. (1973) Anatomy, morphology and development. In *The Lichens* (V. Ahmadjian & M. E. Hale Jr, eds): 3–58. New York: Academic Press.
- Jahns, H. M. (1988) The lichen thallus. In *CRC Handbook of Lichenology*, Vol. 1 (M. Galun, ed): 95–143. Boca Raton, Florida: CRC Press.
- Krog, H. & Swinscow, T. D. V. (1986) The lichen genera *Umbilicaria* and *Lasallia* in East Africa. *Nordic Journal of Botany* **6**: 75–85.
- Larson, D. W. (1983) The pattern of production within individual *Umbilicaria* thalli. *New Phytologist* **94**: 409–419.
- Larsson, P. & Gauslaa, Y. (2009) Rapid juvenile development in old forest lichens. *Botany* **89**: 65–72.
- Moore, D. (1998) *Fungal Morphogenesis*. Cambridge: Cambridge University Press.
- Rhoades, F. M. (1977) Growth rates of the lichen *Lobaria oregana* as determined from sequential photographs. *Canadian Journal of Botany* **55**: 2226–2233.
- Rolstad, J. & Rolstad, E. (2008) Intercalary growth causes geometric length expansion in Methuselah's beard lichen (*Usnea longissima*). *Botany* **86**: 1224–1232.
- Sancho, L. G. & Balaguer, L. (1989) Estudio comparado de la anatomía del talo en el género *Lasallia* Merat (*Umbilicariaceae*: Lichenes). *Anales del Jardín Botánico de Madrid* **46**: 273–281.
- Sancho, L. G. & Crespo, A. (1989) *Lasallia hispanica* and related species. *Lichenologist* **21**: 45–58.
- Sanders, W. B. (1989) Growth and development of the reticulate thallus in the lichen *Ramalina menziesii*. *American Journal of Botany* **76**: 666–678.
- Sanders, W. B. (1992) Comparative *in situ* studies of thallus net development in morphologically distinct populations of the lichen *Ramalina menziesii*. *Bryologist* **95**: 192–204.
- Sanders, W. B. (1993) Apical formation of cilia and associated branching of the axis in the lichen *Teloschistes flavicans*. *International Journal of Plant Sciences* **154**: 75–79.
- Sanders, W. B. & Ascaso, C. (1995) Reiterative production and deformation of cell walls in expanding thallus nets of the lichen *Ramalina menziesii* (*Lecanorales*, Ascomycetes). *American Journal of Botany* **82**: 1358–1366.
- Sanders, W. B. & de los Ríos, A. (2012) Development of thallus axes in *Usnea longissima* (*Parmeliaceae*, Ascomycotina), a fruticose lichen showing diffuse growth. *American Journal of Botany* **99**: 998–1009.
- Sanders, W. B. & de los Ríos, A. (2017) Parenchymatous cell division characterizes the fungal cortex of some common foliose lichens. *American Journal of Botany* **104**: 207–217.
- Sanders, W. B. & Tokamov, S. A. (2015) Diffuse growth in the fruticose beard lichen *Ramalina usnea* (L.) R. Howe. *Lichenologist* **47**: 51–58.
- Schroeter, B. & Scheidegger, C. (1995) Water relations in lichens at subzero temperatures: structural change and carbon dioxide exchange in the lichen *Umbilicaria aprina* from continental Antarctica. *New Phytologist* **131**: 273–285.
- Schwendener, S. (1873) Die Flechten als Parasiten der Algen. *Verhandlungen der Naturforschenden Gesellschaft in Basel* **4**(5): 527–550.
- Scott, M. G. & Larson, D. W. (1983) Comparative morphology and fine structure of a group of *Umbilicaria* lichens. *Canadian Journal of Botany* **62**: 1947–1964.
- Timdal, E. (1984) The delimitation of *Psora* (*Lecidiaceae*) and related genera, with notes on some species. *Nordic Journal of Botany* **4**: 525–540.
- Valladares, F. (1994) Texture and hygroscopic features of the upper surface of the thallus in the lichen family *Umbilicariaceae*. *Annals of Botany* **73**: 403–500.
- Valladares, F. & Ascaso, C. (1994) Intrathalline variability of some structural and physical parameters in the lichen genus *Lasallia*. *Canadian Journal of Botany* **72**: 415–428.
- Valladares, F. & Sancho, L. G. (1995) Medullary structure of the *Umbilicariaceae*. *Lichenologist* **27**: 189–199.
- Valladares, F., Wierzchos, J. & Ascaso, C. (1993) Porosimetric study of the lichen family *Umbilicariaceae*: anatomical interpretation and implications for water storage capacity of the thallus. *American Journal of Botany* **80**: 263–272.
- Valladares, F., Sancho, L. & Ascaso, C. (1998) Water storage in the lichen family *Umbilicariaceae*. *Botanica Acta* **111**: 99–107.
- Vogel, S. (1955) Niedere "Fensterpflanzen" in der südafrikanischen Wüste. *Beiträge zur Biologie der Pflanzen* **31**: 45–135.