

Editor

Patricia Casey (Ireland)

Editorial Board

Gwen Adshead (UK)
Mary-Jane Attenburrow (UK)
Kamaldeep Bhui (UK)
Guy Brookes (UK)
John Cookson (UK)
Gian Maria Galeazzi (Italy)
Roger Ho (Singapore)
Malcolm Hopwood (Australia)
Julian Hughes (UK)
Sarah Huline-Dickens (UK)

Helen Killaspy (UK)
Simon Kyaga (Sweden)
Jason Luty (UK)
Sean Lynch (UK)
Alex Mitchell (UK)
Femi Oyeboode (UK)
Jan Scott (UK)
Katharine Smith (UK)
Jessica Yakeley (UK)
David Yeomans (UK)
Rodolfo Zaratiegui (Argentina)

Trainee Editor

Howard Ryland (UK)

Editorial Assistant

Jonica Thomas

Staff Editors

Kasia Krawczyk
Lynnette Maddock
Katherine Sole

Subscriptions

BJPsych Advances Volume 21, 2015 (six issues)
(full airmail £19/US\$34 extra)

	Members of the Royal College of Psychiatrists	Non-members	Institutions
Print (+ free online)			
Europe (& UK)	£56	£162	£177
USA	US\$106	US\$254	US\$306
Elsewhere	£67	£173	£192
Online (only)			
Worldwide	Free	£127/US\$191	£163/US\$251

Payment may be made by cheque/money order, by Access/Master Card/ Visa/American Express, or by UNESCO coupons. EC subscribers: please supply your Member State Code and Value Added Tax (VAT) number.

Payment should be made to Maney Publishing, Suite 1C, Joseph's Well, Hanover Walk, Leeds LS3 1AB, UK (tel: +44 (0)113 243 2800; fax: +44 (0)113 386 8178; email: subscriptions@maney.co.uk). For subscriptions in North America, please contact Maney Publishing, Two Penn Center Plaza, Suite 200, Philadelphia PA 19102, USA (tel: 1 (215) 854 6402; fax: 1 (215) 569 0216; email: subscriptions@maneypublishing.com).

Continuing professional development (CPD) Those wishing to register for CPD with the Royal College of Psychiatrists should contact the CPD unit (tel: +44 (0)20 3701 2621 or +44 (0)20 3701 2610). There is no charge for participation in the CPD scheme for Members, Fellows and Affiliates of the College.

CPD Online The College also publishes an interactive online learning facility for CPD in psychiatry. Further details, sample modules and subscription information can be viewed at www.psychiatrycpd.org. Discounts are available for *BJPsych Advances* subscribers.

Correspondence Letters submitted for publication should be emailed to Professor Patricia Casey at apt@rcpsych.ac.uk or posted to *BJPsych Advances*, Royal College of Psychiatrists, 21 Prescot Street, London E1 8BB, UK.

Printed by Henry Ling Ltd, 23 High East Street, Dorchester, Dorset DT1 1HD.

© The Royal College of Psychiatrists 2015. Published by the Royal College of Psychiatrists, a charity registered in England and Wales (228636) and in Scotland (SC038369). Unless so stated, material in *Advances in Psychiatric Treatment* does not necessarily reflect the views of the Editor or the Royal College of Psychiatrists. The publishers are not responsible for any errors of omission or fact.

The College crest is a registered trade mark of the Royal College of Psychiatrists.
ISSN 2056-4678

New from CPD Online

CPD ONLINE

CPD Online is an e-learning resource offered by the Royal College of Psychiatrists. The website contains a range of learning modules and podcasts that provide a flexible, interactive way of keeping up to date with progress in mental health. College members may use CPD Online for up to 25 CPD points in the UK. Access to the modules is through annual subscription, but we offer a series of free trial modules. For more information, visit the CPD Online website: www.psychiatrycpd.org.

Minimising in-patient suicides

In-patient suicide accounts for 10% of all patient suicides, emphasising the importance of effective preventive measures on wards. This module reviews the characteristics of in-patient suicide and analyses the trends over the years. The role of environmental risk factors is described, with an emphasis on prevention, and clinical measures that can minimise in-patient suicide are outlined. **CPD credits: 1**



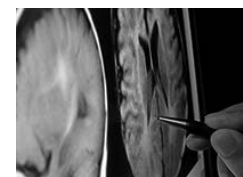
Podcast The history and psychology of delusions

The current view of delusions is that they are the result of biology gone awry. In contrast, New York psychiatrist Joel Gold argues that delusions are the result of the interaction between the brain and the social world. In this podcast Raj Persaud talks to Dr Gold about his theory and explores the role of the social world in the development of psychosis. **CPD credits: 0.5**



Neuroimaging in dementia

It is estimated that 1 million people in the UK will be living with dementia by 2021, and dementia care currently costs the economy an estimated £23 billion per year. But diagnosis of the condition is becoming easier with the emergence of neuroimaging. This module reviews the role of neuroimaging and provides a practical guide to the appropriate use and evaluation of brain scans. **CPD credits: 1.5**



Podcast Single-session integrated CBT

The assumption that therapy should always be long term has been challenged repeatedly over the past 25 years, but single-session integrated CBT (SSI-CBT) has become associated in many therapists' minds with being money driven and poor quality. Professor Windy Dryden offers a unique perspective on CBT and advocates an integrated approach to single-session therapy. Here he talks to Raj Persaud about the technique and the evidence for its effectiveness. **CPD credits: 0.5**

