

A new species of *Antarctoxylon*: a contribution to the early angiosperm ecosystem of Antarctica during the late Cretaceous

JAKUB SAKALA¹ & RADEK VODRÁŽKA²

¹Charles University in Prague, Faculty of Science, Institute of Geology and Palaeontology, Albertov 6, 128 43 Prague, Czech Republic

²Czech Geological Survey, Klárov 3, 118 21 Prague, Czech Republic
rade@natur.cuni.cz

Abstract: A new species of *Antarctoxylon* is described from the Coniacian Hidden Lake Formation of James Ross Island as *A. mixai* Sakala, sp. nov. This angiosperm fossil wood shows a unique combination of features in having indistinct growth ring boundaries, scalariform perforation plates with about 30 bars and rays both narrow (1–6-seriate) and very wide (up to 18-seriate). Its systematic affinities and exact living relative at the specific, generic or even familial level cannot be specified. Along with *Weinmannioxylon nordenskjoeldii* from James Ross Island and the angiosperm woods from the Williams Point on Livingston Island, this record provides further evidence of the earliest record of arboreal angiosperms in Antarctica.

Received 1 February 2013, accepted 24 September 2013, first published online 16 December 2013

Key words: Coniacian, fossil heteroxylous wood, James Ross Island, scalariform perforation plates, wide rays

Introduction

This work provides the first contribution resulting from the Czech Geological Survey Antarctic research project focusing on fossil wood from the Upper Cretaceous of James Ross Island lying to the east of the Antarctic Peninsula in the Larsen Basin (Fig. 1). During the field season January–February 2010, almost 350 specimens of fossil wood were collected. The majority of the specimens originated from the vicinity of Brandy Bay and the area between Johann Gregor Mendel Czech Antarctic Station (63°48'5.6"S, 57°53'5.6"W) and Crame Col, situated in the northern part of the James Ross Island (Fig. 1). The stratigraphic range covered by these fossils extends from the mid-Albian (base of the Whisky Bay Formation) through the Hidden Lake Formation (Coniacian) and into the lower part of the Santa Marta Formation (uppermost Coniacian–Santonian). Therefore, these fossils represent a complete, stratigraphically well-defined source of information, mainly with respect to the Cenomanian and Turonian which up to now has been poorly documented (cf. Cantrill & Poole 2005, table 1). This paper provides a detailed anatomical description of a new species of angiosperm wood mentioned in the short preliminary report by Kvaček & Sakala (2012).

Material and methods

Every sample of fossil wood was documented in the field including the regular use of the so-called ‘reference points’ to which GPS coordinates and lithological and stratigraphical data were attributed. Care was taken to ensure any specimen collected was from one individual piece of wood and did not

represent splinters from larger trunks. If specimens were deemed to be splinters originating from one original piece of wood then the sample number was suffixed by ‘A’, ‘B’, ‘C’, etc. Thin sections *c.* 40 µm thick were prepared following standard techniques and studied and photographed using optical microscopes (Olympus BX-51 and Nikon Eclipse, LV100Pol in Prague and a Nikon Eclipse 80i in Paris) in normal transmitted light. Some photos were subsequently treated with the software Helicon Focus 5.3 in order to create one completely focused image from several partially focused images by combining the focused areas (Fig. 3a, b & h). The anatomical description is in accordance with the IAWA Hardwood List (Wheeler *et al.* 1989, InsideWood 2004–onwards, <http://insidewood.lib.ncsu.edu/search>). All specimens as well as the corresponding thin slides are housed in the Czech Geological Survey in Prague, Czech Republic.

Geological setting

The Jurassic–Cenozoic sedimentary succession of the James Ross Island area has been interpreted as a small part of a large sedimentary basin, originally defined as the Larsen Basin (Macdonald *et al.* 1988). However, Elliot (1988) used the term James Ross Basin for the Mesozoic–Cenozoic sequence in the James Ross Island area (Fig. 1). The Larsen Basin developed in Jurassic times as a result of continental rifting during the early stages of Gondwana break-up (Hathway 2000 and references therein).

The silicified wood under study here (CGS A.061F.W2C) is one of four splinters (CGS A.061F.W2A–D), which all come from one sample (CGS A.061F.W2) representing one morphotype. Besides this angiosperm type, we found only 1–2 different morphotypes in the whole study area.

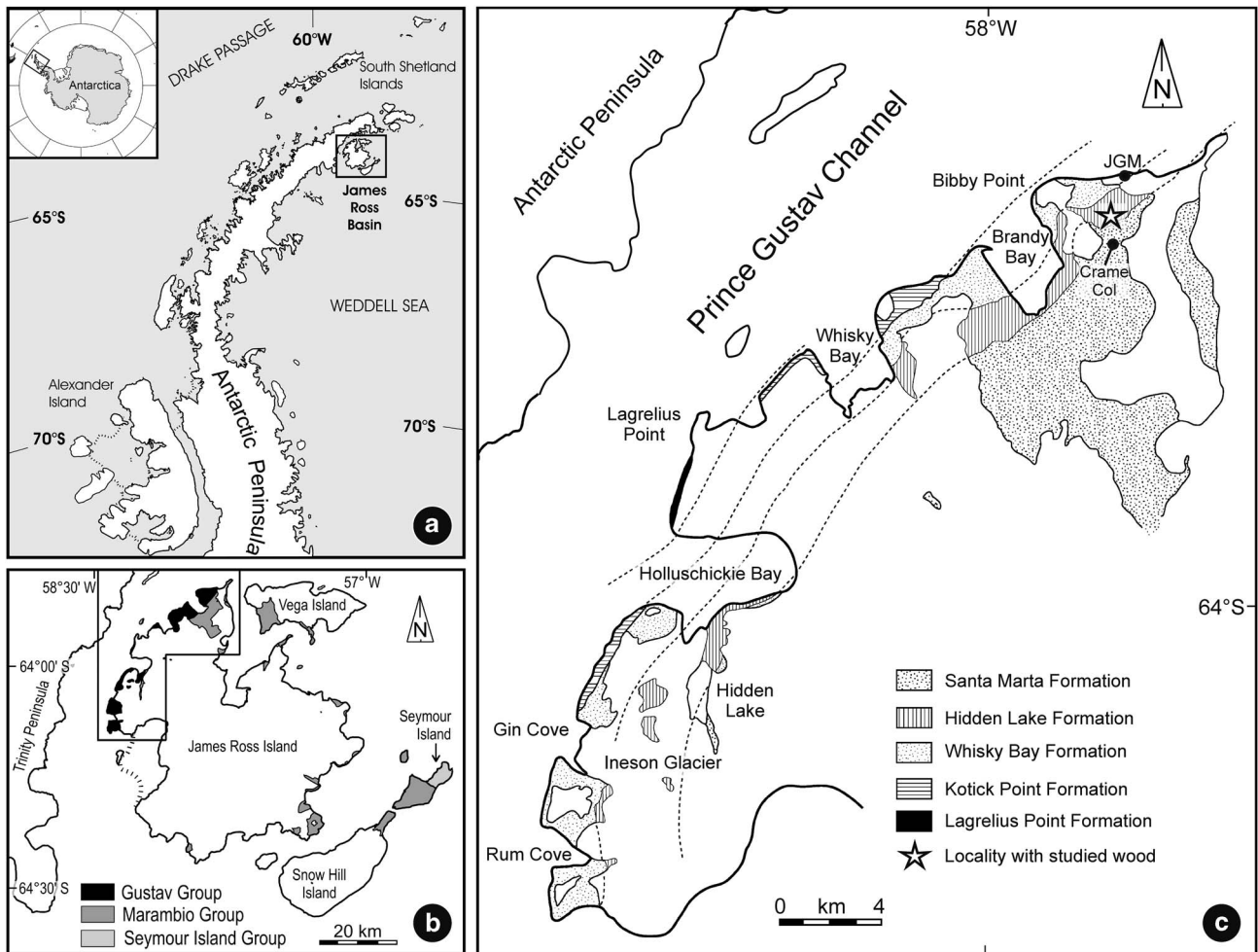


Fig. 1. a. Map showing the location of James Ross Island region. b. Geological sketch map of James Ross Island showing the Gustav, Marambio and Seymour Island groups for the James Ross Island region (based on Crame & Luther 1997). c. Enlargement of the Cretaceous sediments outcropping in the north-western James Ross Island with the locality yielding the studied wood indicated. The dashed lines trace formation boundaries across sea and ice cover; JGM stands for Johann Gregor Mendel Czech Antarctic Station. Based on Ineson *et al.* (1986) and Whitham *et al.* (2006).

They will, however, be the subject of further studies. The fossil wood was collected from the extensive Lower–Upper Cretaceous sedimentary sequence exposed on the western and north-western margins of James Ross Island (Fig. 1) (Ineson *et al.* 1986, Rinaldi 1992). This sequence comprises part of a regressive mega-sequence of volcanic arc-related clastic and volcanoclastic marine rocks that has now been extensively studied and subdivided lithostratigraphically (Crame *et al.* 2006, Whitham *et al.* 2006 and references therein). The specimen was collected from platy tuffaceous sandstones of the uppermost Hidden Lake Formation ($63^{\circ}49'16.0''\text{S}$, $57^{\circ}53'22.8''\text{W}$) of the Gustav Group (Fig. 2). The Hidden Lake Formation consists of 300–400 m of coarse-grained volcanoclastic conglomerates, sandstones and mudstones, representing base-of-slope, fan-delta and basin-floor environments of deposition in a relatively deep marine environment below wave base (Ineson *et al.* 1986, Pirrie *et al.* 1991, Whitham *et al.* 2006). Macrofaunal and

palynological studies originally suggested a probable age range of Coniacian–Santonian (e.g. Barreda *et al.* 1999), but strontium (Sr) isotope data confirm a Coniacian age (88.7–86.4 Ma) for this formation (McArthur *et al.* 2000, Riding & Crame 2002). Crame *et al.* (2006) examined the mid-Cretaceous stratigraphy of the James Ross Basin, using new macrofaunal and palynological data from the Brandy Bay area, confirming entirely Coniacian age for the Hidden Lake Formation.

Systematic palaeobotany

Family unknown

Antarctoxylon Poole & Cantrill

Antarctoxylon mixai Sakala, sp. nov. (Fig. 3)

Diagnosis: Heteroxylous diffuse-porous wood with indistinct growth ring boundaries. Vessels are mainly solitary, with scalariform perforation plates with around

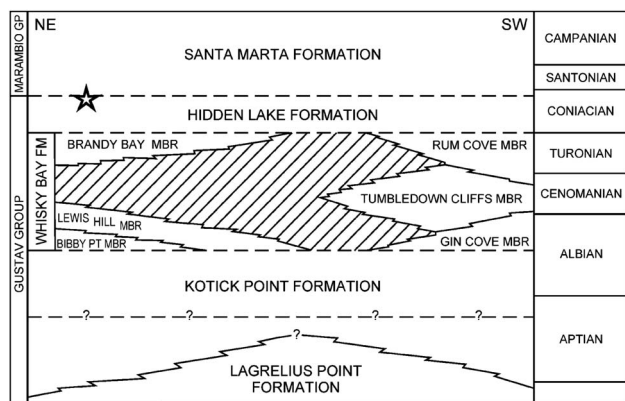


Fig. 2. Stratigraphic correlation of Cretaceous sediments in north-western James Ross Island with position of the locality yielding the studied wood indicated. Note the considerable lateral variation within the Whisky Bay Formation. Based on Crame *et al.* (2006).

30 bars and opposite to scalariform intervessel pits. Rays are slightly heterocellular of two distinct sizes: narrow 1–6-seriate and wide up to 18-seriate. Axial parenchyma is diffuse apotracheal and scanty paratracheal.

Holotype: One piece of wood (CGS A.061F.W2C) and three thin sections (47925, 47926, 47927); all housed in the collections of the Czech Geological Survey, Prague, Czech Republic.

Type locality: Northern part of the James Ross Island, Antarctic Peninsula, Antarctica (63°49'16.0"S, 57°53'22.8"W).

Stratigraphic horizon: Coniacian of the Hidden Lake Formation.

Etymology: Named for the friend and head of the geological part of the Czech Antarctic project Petr Mixa.

Occurrence: Known from the type locality only.

Macroscopic description: One silicified piece of fossil wood, interpreted as fragment of trunk based on shape and growth ring curvature, dimensions of the analysed sample: 2 x 1.5 x 12 cm (Fig. 3a & b), black in colour with obvious (lighter, spindle-shaped) rays running through it (Fig. 3a & b).

Microscopic description: Growth rings: indistinct. Wood: diffuse-porous (Fig. 3c & d). Vessels: *c.* 80 per square mm, mainly solitary (90%) or in short radial pairs (Fig. 3d); tangential diameter 25–50–80 μ m (minimum–mean–maximum), angular in outline in transverse section; perforation plates scalariform, typically with *c.* 30 bars (Fig. 3f) occasionally more, but in narrower vessels element bars can be fewer in number and forked (Fig. 3g); intervessel pits opposite to scalariform (Fig. 3h). Rays: slightly heterocellular of two distinct sizes (Fig. 3e), narrow 1–6-seriate and wide up to 18-seriate (0.3–(–)0.5 mm wide and 4 mm high for complete ray); wide rays separated by a distance of around 2.5 mm, often dissected by ground tissue and dilated tangentially (Fig. 3d & e); vessel-ray pits scalariform with much reduced borders. Axial parenchyma: both diffuse apotracheal and scanty

paratracheal (Fig. 3h). Fibres: thin- to thick-walled, unevenly sized and shaped (Fig. 3d) with undistinguishable pits, septa not observed.

Discussion

Eight types of angiosperm wood have been described so far from the James Ross Island: *Laurelites jamesrossii* Poole et Francis (Poole & Francis 1999), *Winteroxylon jamesrossii* Poole et Francis (Poole & Francis 2000), *Weinmannioxylon nordenskjoeldii* Poole *et al.* (Poole *et al.* 2000a), *Illicioxylon antarcticum* Poole, Gottwald et Francis (Poole *et al.* 2000b), *Sassafrasoxylon gottwaldii* Poole, Richter et Francis (Poole *et al.* 2000c), *Hedycaryoxylon tambourissoides* Poole et Gottwald (Poole & Gottwald 2001), *Nothofagoxylon scalariforme* Gothan and *N. aconcaguaense* Pons et Vincente (Poole 2002). Our wood can be separated quite easily from the dicotyledonous vesselles *Winteroxylon jamesrossii* and the ring-porous *S. gottwaldii*. Both representatives of *Nothofagoxylon* from James Ross Island, i.e. *N. scalariforme* and *N. aconcaguaense*, are very different from our wood in having diffuse to semi-ring porous wood with very thin mostly uni- to biseriate rays. *Laurelites jamesrossii* and *I. antarcticum* also have significantly narrower rays (up to 5-seriate). *Weinmannioxylon nordenskjoeldii* shows a degree of similarity to our wood with scalariform perforation plates with numerous bars (up to 40), but its rays are only 1–4-seriate. On the other hand, *H. tambourissoides* shows multiseriate rays 4–18 cells wide, but its overall pattern of vessels with only 6–12 bars per perforation plate separates this morphotype from the one described here. Therefore, this specimen represents a new type to the James Ross Island area.

Greater similarity is shared with angiosperm woods described by Poole & Cantrill (2001) from the Upper Cretaceous at Williams Point on Livingston Island. The woods show features shared by the Magnoliidae, Hamamelidae and Rosidae today and thus Poole & Cantrill (2001) erected a widely defined morphogenus *Antarctoxylon* to accommodate such early angiospermous wood morphotypes from Antarctica. From comparisons with the five species of *Antarctoxylon* described so far, i.e. *A. livingstonii* Poole et Cantrill, *A. multiseriatum* Poole et Cantrill, *A. heteroporosum* Poole et Cantrill, *A. uniperforatum* Poole et Cantrill (Poole & Cantrill 2001) and *A. juglandoides* Poole, Mennega et Cantrill (Poole *et al.* 2003), the anatomy of our wood shares greatest similarity to *A. multiseriatum* in having both rays of two sizes, vessels with opposite and scalariform pitting, and numerous bars in their scalariform perforation plates. However, the fossil described here from James Ross Island has more numerous bars (i.e. 30 and more compared with up to 22) and significantly wider maximum ray widths (18-seriate as compared with 11-seriate in *A. multiseriatum*); note the absolute maximal width of rays (0.5 mm) in CGS

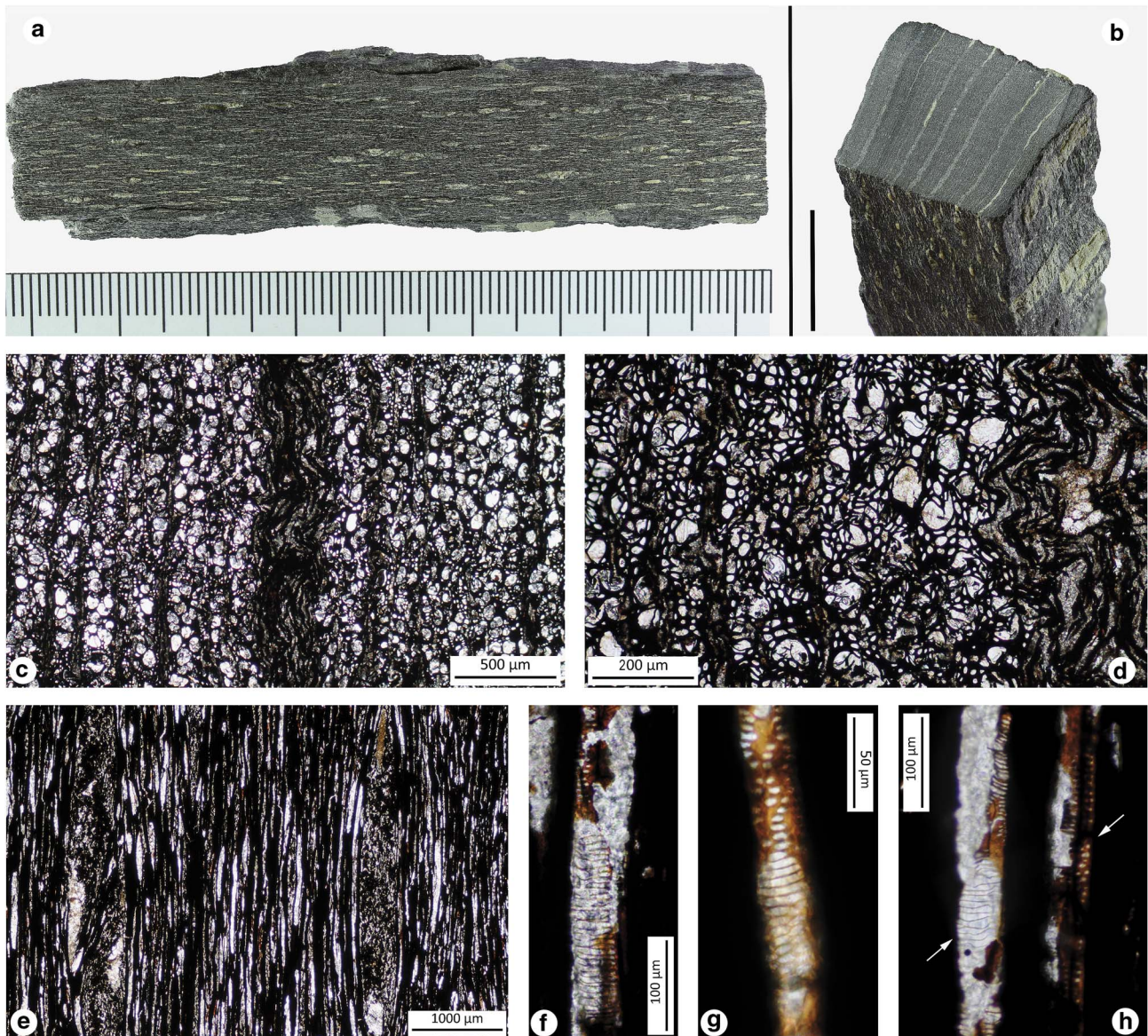


Fig. 3. *Antarctoxylon mixai* Sakala, sp. nov. (holotype no. CGS A.061F.W2C). **a.** Tangential fracture of the specimen with light spindle-like structures marking the rays. **b.** View of the transverse section of specimen showing the distinct rays (scale bar = 1 cm). **c.** Transverse section showing diffuse-porous wood with mostly solitary vessels and rays of two distinct sizes with one wide ray in the middle (slide no. 47 925). **d.** Transverse section showing the seemingly angular vessels and unevenly sized and shaped fibres (both probably caused by deformation) on the left and dilatation of parenchyma cells (in black) by mineral inclusion (in grey) in a wide ray on the right (slide no. 47 925). **e.** Tangential longitudinal section showing rays of two distinct sizes with two wide rays, left one diagonally dissected by fibres (slide no. 47 927). **f.** Radial longitudinal section showing a typical scalariform perforation plate with around 30 bars (slide no. 47 926). **g.** Radial longitudinal section showing smaller vessel element with unusual scalariform perforation plate with fewer forked bars (slide no. 47 926). **h.** Radial longitudinal section showing vessel on the left with opposite to scalariform intervessel pits (upper left) passing into scalariform perforation plate (left arrow), to the right a second vessel element abuts a thinner strand of axial paratracheal parenchyma indicated by the right arrow (slide no. 47 926).

A.061F.W2C can lead to overestimations due to the secondary dilatation of cells. Although this specimen could be considered to be ‘an end member of the *A. multiseriatum* type’ (Poole, personal communication 2011), we consider that the quantitative differences of these two features

constitute a real difference between our wood and *A. multiseriatum*, and do not represent differences resulting from intraspecific variation or intrinsic differences (such as relative chronological age). Therefore, we propose a new species of *Antarctoxylon*: *A. mixai* Sakala, sp. nov.

Concerning its anatomical similarity to *A. multiseriatum* the same taxonomic argument put forward by Poole & Cantrill (2001) will also apply to this fossil. Systematic affinities are shared with woods belonging to several families such as the Chloranthaceae, Eupteleaceae, Icacinaceae, Monimiaceae and Trimeniaceae (Poole, personal communication 2011, Poole & Cantrill 2001). When the anatomical information is fed into the InsideWood Database (<http://insidewood.lib.ncsu.edu/search>), the results returned suggest affinities with the Monimiaceae (e.g. *Hedycarya arborea* J.R. Forst et G. Forst or *Kibara* sp.) and Rouseaceae (e.g. *Carpodetus serratus* J.R. Forst with distinctly heterocellular rays), both of which bear some resemblance to our wood. However, as it is often the case with early angiosperms from the Cretaceous (e.g. Chapman & Smellie 1992, Poole & Cantrill 2001, Gryc *et al.* 2009) the anatomy shows characteristically 'primitive' features (according to the Baileyan trends, see Wheeler & Baas 1993) preventing any match with extant taxa.

The Coniacian age of the fossil described here is considered to be coeval with the oldest angiosperm wood record from James Ross Island, i.e. *Weinmannioxylon nordenskjöldii* (cf. Poole *et al.* 2000a and Cantrill & Poole 2005, fig. 3). Moreover, the age of both these woods from James Ross Island might even be similar in age to the oldest angiosperm woods so far recorded from Antarctica, namely the *Antarctoxylon* woods from the Williams Point on Livingston Island, which have been dated to Coniacian–Santonian age (85 Ma) using argon–argon dating (Cantrill & Poole 2012). While it may well be the oldest wood, there are many papers that document older angiosperm material, even from Lower Cretaceous, including leaves (e.g. Cantrill & Nichols 1996; late Albian) and pollen (e.g. Dettmann & Thomson 1987; early Albian).

Conclusions

Our fossil wood from the Coniacian of the Hidden Lake Formation on James Ross Island shows a characteristic combination of 'primitive' angiospermous features that include indistinct growth ring boundaries, scalariform perforation plates with numerous bars and rays of two distinct sizes. Given this combination of characters the wood belongs to the morphogenus *Antarctoxylon* and might represent the *A. multiseriatum* type. However, its rays are wider and bars more numerous than in *A. multiseriatum*, so we propose a new species *Antarctoxylon mixai* Sakala, sp. nov. This fossil, which represents one of the oldest angiosperm wood records in Antarctica, increases the geographical spread of the early arboreal angiosperms in the Antarctic Peninsula region and provides important information crucial to our understanding of the biodiversity, long-term vegetation changes and palaeoclimate of unique high-latitude palaeoenvironments that have no modern analogues today.

Acknowledgements

We are grateful to Catherine Privé-Gill for help and valuable comments concerning the wood anatomy and to Imogen Poole for providing information on dating of the Williams Point material and discussion regarding the systematic affinity of our material. We are also indebted to Anaïs Boura for her assistance with Nikon Eclipse 80i microscope and to Jakub Prokop for his help with Helicon Focus software. Finally, our special thanks go to the British Antarctic Survey, especially to its former director Professor Nicholas Owens, for logistical help in transporting the fossil material from Antarctica to Europe. The manuscript was greatly improved by the thorough review of I. Poole and D.J. Cantrill. The field and laboratory work were undertaken with the financial support of Ministry of Environment of the Czech Republic, project no. VaV SP II 1a9/23/07. The research was also partly supported by the grants MSM0021620855 and PRVOUK P44.

References

- BARREDA, V., PALAMARCZUK, S. & MEDINA, F. 1999. Palinología de la Formación Hidden Lake (Coniaciano-Santoniano), Isla James Ross, Antártida. *Revista Española de Micropaleontología*, **31**, 53–72.
- CANTRILL, D.J. & NICHOLS, G.J. 1996. Taxonomy and palaeoecology of early Cretaceous (late Albian) angiosperm leaves from Alexander Island, Antarctica. *Review of Palaeobotany and Palynology*, **92**, 1–28.
- CANTRILL, D.J. & POOLE, I. 2005. Taxonomic turnover and abundance in Cretaceous to Tertiary wood floras of Antarctica: implications for changes in forest ecology. *Palaeogeography, Palaeoclimatology, Palaeoecology*, **215**, 205–219.
- CANTRILL, D.J. & POOLE, I. 2012. *The vegetation of Antarctica through geological time*. Cambridge: Cambridge University Press, 487 pp.
- CHAPMAN, J.L. & SMELLIE, J.L. 1992. Cretaceous fossil wood and palynomorphs from Williams Point, Livingston Island, Antarctic Peninsula. *Review of Palaeobotany and Palynology*, **74**, 163–192.
- CRAME, J.A. & LUTHER, A. 1997. The last inoceramid bivalves in Antarctica. *Cretaceous Research*, **18**, 179–195.
- CRAME, J.A., PIRRIE, D. & RIDING, J.B. 2006. Mid-Cretaceous stratigraphy of the James Ross Basin, Antarctica. In FRANCIS, J.E., PIRRIE, D. & CRAME, J.A., eds. Cretaceous–Tertiary high-latitude palaeoenvironments, James Ross Basin, Antarctica. *Special Publication of the Geological Society of London*, No. 258, 7–19.
- DETTMANN, M.E. & THOMSON, M.R.A. 1987. Cretaceous palynomorphs from the James Ross Island area, Antarctica – a pilot study. *British Antarctic Survey Bulletin*, No. 77, 13–59.
- ELLIOT, D.H. 1988. Tectonic setting and evolution of the James Ross Basin, northern Antarctic Peninsula. In FELDMANN, R.M. & WOODBURNE, M.O., eds. *Geology and paleontology of Seymour Island, Antarctic Peninsula*. Boulder, CO: Geological Society of America Memoir, No. 169, 541–555.
- GRYC, V., VAVRČÍK, H. & SAKALA, J. 2009. Cenomanian angiosperm wood from the Bohemian Cretaceous Basin, Czech Republic. *IAWA Journal*, **30**, 319–329.
- HATHWAY, B. 2000. Continental rift to back-arc basin: Jurassic-Cretaceous stratigraphical and structural evolution of the Larsen Basins, Antarctic Peninsula. *Journal of the Geological Society*, **157**, 417–432.
- INSON, J.R., CRAME, J.A. & THOMSON, M.R.A. 1986. Lithostratigraphy of the Cretaceous strata of west James Ross Island, Antarctica. *Cretaceous Research*, **7**, 141–159.

- KVAČEK, J. & SAKALA, J. 2012. Late Cretaceous flora of James Ross Island (Antarctica) – preliminary report. *Czech Polar Reports (2011)*, **1**, 96–103.
- MACDONALD, D.I.M., BARKER, P.F., GARRETT, S.W., INESON, J.R., PIRRIE, D., STOREY, B.C., WHITHAM, A.G., KINGHORN, R.R.F. & MARSHALL, J.E.A. 1988. A preliminary assessment of the hydrocarbon potential of the Larsen-Basin, Antarctica. *Marine and Petroleum Geology*, **5**, 34–53.
- MCARTHUR, J.M., CRAME, J.A. & THIRLWALL, M.F. 2000. Definition of late Cretaceous stage boundaries in Antarctica using strontium isotope stratigraphy. *Journal of Geology*, **108**, 623–640.
- PIRRIE, D., WHITHAM, A.G. & INESON, J.R. 1991. The role of tectonics and eustasy in the evolution of a marginal basin: Cretaceous–Tertiary Larsen Basin, Antarctica. In MACDONALD, D.I.M., ed. *Sedimentation, tectonics and eustasy: sea-level changes at active margins*. Oxford: Blackwell Publishing, 293–305.
- POOLE, I. 2002. Systematics of Cretaceous and Tertiary *Nothofagoxylon*: implications for Southern Hemisphere biogeography and evolution of the Nothofagaceae. *Australian Systematic Botany*, **15**, 247–276.
- POOLE, I. & CANTRILL, D. 2001. Fossil woods from Williams Point Beds, Livingston Island, Antarctica: a late Cretaceous southern high latitude flora. *Palaeontology*, **44**, 1081–1112.
- POOLE, I. & FRANCIS, J.E. 1999. The first record of fossil atherospermataceous wood from the upper Cretaceous of Antarctica. *Review of Palaeobotany and Palynology*, **107**, 97–107.
- POOLE, I. & FRANCIS, J.E. 2000. The first record of fossil wood of Winteraceae from the upper Cretaceous of Antarctica. *Annals of Botany*, **85**, 307–315.
- POOLE, I. & GOTTWALD, H. 2001. Monimiaceae *sensu lato*, an element of Gondwanan polar forests: evidence from the late Cretaceous–early Tertiary wood flora of Antarctica. *Australian Systematic Botany*, **14**, 207–230.
- POOLE, I., GOTTWALD, H. & FRANCIS, J.E. 2000b. *Illicioxylon*, an element of Gondwanan polar forests? Late Cretaceous and early Tertiary woods of Antarctica. *Annals of Botany*, **86**, 421–432.
- POOLE, I., MENNEGA, A.M.W. & CANTRILL, D.J. 2003. Valdivian ecosystems in the late Cretaceous and early Tertiary of Antarctica: further evidence from myrtaceous and eucryphiaceous fossil wood. *Review of Palaeobotany and Palynology*, **124**, 9–27.
- POOLE, I., RICHTER, H.G. & FRANCIS, J.E. 2000c. Evidence for Gondwanan origins for *Sassafras* (Lauraceae)? Late Cretaceous fossil wood of Antarctica. *IAWA Journal*, **21**, 463–475.
- POOLE, I., CANTRILL, D.J., HAYES, P. & FRANCIS, J. 2000a. The fossil record of Cunoniaceae: new evidence from late Cretaceous wood of Antarctica? *Review of Palaeobotany and Palynology*, **111**, 127–144.
- RIDING, J.B. & CRAME, J.A. 2002. Aptian to Coniacian (early–late Cretaceous) palynostratigraphy of the Gustav Group, James Ross Basin, Antarctica. *Cretaceous Research*, **23**, 739–760.
- RINALDI, C.A. 1992. *Geología de la isla James Ross. Instituto Antártico Argentino*. Buenos Aires: Dirección Nacional del Antártico, 389 pp.
- WHEELER, E.A. & BAAS, P. 1993. The potentials and limitations of dicotyledonous wood anatomy for climatic reconstructions. *Paleobiology*, **19**, 487–498.
- WHEELER, E.A., BAAS, P. & GASSON, P.E., eds. 1989. IAWA list of microscopic features for hardwood identification. *IAWA Bulletin New Series*, **10**, 219–232.
- WHITHAM, A.G., INESON, J.R. & PIRRIE, D. 2006. Marine volcanoclastics of the Hidden Lake Formation (Coniacian) of James Ross Island, Antarctica: an enigmatic element in the history of a back-arc basin. In FRANCIS, J.E., PIRRIE, D. & CRAME, J.A., eds. *Cretaceous–Tertiary high-latitude palaeoenvironments: James Ross Basin, Antarctica. Special Publication of the Geological Society of London*, No. 258, 21–47.