

Source tracing of detrital serpentinite in the Oligocene molasse deposits from the western Alps (Barrême basin): implications for relief formation in the internal zone

S. SCHWARTZ*†, S. GUILLOT*, P. TRICART*, M. BERNET*,
S. JOURDAN*, T. DUMONT* & G. MONTAGNAC‡

*IsTerre, CNRS, Université Joseph Fourier (Grenoble1), F-38041 Grenoble, Cedex 9, France

‡Laboratoire des Sciences de la Terre, CNRS, ENS Lyon, France

(Received 9 April 2010; accepted 5 December 2011; first published online 31 January 2012)

Abstract – We present the first contribution of tracing the source area of ophiolitic detritus in the Alpine molasse deposits by Raman spectroscopy. The lower Oligocene molasse deposits preserved in the Barrême basin, in the SW foreland of the western Alpine arc, are known for the sudden arrival of the first ‘exotic’ detritus coming from the internal Alpine zones. Among them, the pebbles of serpentinitized peridotites have so far not been studied. We show that they only consist of antigorite serpentinite, implying that they originate from erosion of high temperature blueschists. In contrast, the upper Oligocene/lower Miocene molasse shows mixed clasts of serpentine including antigorite and lizardite without any evidence of chrysotile. This suggests that they were derived from a less metamorphosed unit such as the low temperature blueschist unit. Taking into account the sediment transport direction in the basin and the varied metamorphic characteristics of the other ocean-derived detritus, we constrain the lithologic nature of the source zones and the location of the relief zones, identified as the internal Alps, SE of the Pelvoux external crystalline massif. Available structural data and *in situ* thermochronological data allow the reconstruction of the Oligocene to early Miocene collisional geometry of the Palaeogene subduction wedge. This phase corresponds to two major phases of uplift evolving from a single relief zone located above the Ivrea body during early Oligocene times and persisting up to early Miocene times; then during late Oligocene/early Miocene times a second relief zone developed above the Briançonnais zone. At that time, the internal western Alps acquired its double vergency.

Keywords: serpentinite pebbles, Raman spectroscopy, source tracing, western Alps, Barrême basin.

1. Introduction

Continental collision leads to formation of a convergent mountain belt and to surface uplift. Erosion of this mountain belt feeds clastic sediments to the adjacent basins (e.g. Burbank, 2002). Tracing the different sources of synorogenic detritus provides information on the nature and extent of lithotectonic units exposed during the successive stages of continental collision. Classic provenance analysis based on sandstone petrography led to identifying several remarkable pebble lithologies, which are of particular importance for discussing the nature and location of potential source areas (e.g. Dickinson & Suczek, 1979; Garzanti, *et al.* 2007). More recently, low temperature (LT) thermochronology of detrital grains has developed into a powerful tool to trace the thermal and exhumation history of orogens (see references in Carter & Bristow, 2000; Bernet & Spiegel, 2004; Bernet & Garver, 2005). In the Alps as in other collision belts, the search for ophiolite clasts in synorogenic sediments is traditionally of particular importance, especially if Cr-spinel is abundant as this heavy mineral is characteristic of an ophiolitic source (e.g. Najman &

Garzanti, 2000; Garzanti, Ando & Scutella, 2000). When Cr-spinel are rare or absent, which is the case in the western Alpine synorogenic sediments (Evans & Mange-Rajetzky, 1991), serpentinites mainly derived from hydrated peridotites can be useful to depict ophiolitic sources as serpentinites are particularly resistant to fluvial transport (McBride & Picard, 1987). Usually, serpentinite clasts are seldom studied because of difficulties in determining their mineral species, mostly distinguishing between chrysotile, lizardite and antigorite. However, the mineralogy of serpentinite provides direct information on the ophiolite metamorphic history. The use of Raman spectroscopy allows overcoming the difficulties of serpentine characterization (Rinaudo, Gastaldi, Belluso, 2003; Auzende *et al.* 2004; Groppo *et al.* 2006). Applied to different ophiolite-bearing thrust sheets along the Queyras–Monviso transect, this method shows that the nature of serpentine minerals evolves along the subduction wedge of the western Alps, in accordance with the different *P–T* conditions estimated from petrologic metamorphic studies (Auzende *et al.* 2006). On this basis, we propose here to apply the same method to sand grains and pebbles of serpentinite from synorogenic molasse deposits in the foreland basin remnants of the western Alps.

†Author for correspondence: stephane.schwartz@ujf-grenoble.fr

We chose the Barrême basin, a small piggy-back basin with well-preserved lower Oligocene to lower Miocene molasse formations (e.g. Evans & Elliott, 1999; Callec, 2001 and references therein). The sampled syn-collisional molasse deposits are known to bear the very first detrital input from the internal Alpine zone, often termed ‘exotic clasts’ (historical references in Chauveau & Lemoine, 1961; Morag *et al.* 2008). The early Oligocene is also the time when these internal zones underwent a major orogenic phase related to what may be regarded as the climax of the collision in the western Alps enhancing relief formation (Lardeaux *et al.* 2006; Morag *et al.* 2008; Bernet & Tricart, 2011). Considering these constraints allows us to discuss the possible origin of the analysed detrital serpentinites in the context of the Alpine relief formation, from ~ 34 to 23 Ma ago.

2. Geologic setting

The Alps are located on the boundary between the European and African plates. Alpine evolution along the Eurasia–Africa boundary was initially dominated by plate divergence, which induced Mesozoic continental rifting and ocean opening. Since Late Cretaceous times, plate convergence has resulted in subduction and collision (Rosenbaum & Lister, 2005 and references therein). The structural geometry of the western Alps classically resulted from indentation of the southern margin of Europe by the Adriatic microplate or African promontory after the closure of the intervening Tethyan Ocean (e.g. Coward & Dietrich, 1989; Platt *et al.* 1989; Schmid & Kissling, 2000), associated with strain partitioning in an oblique collision context between Adria and Europe (Malusà, Polino & Zattin, 2009), and possibly with slab retreat (Vignaroli *et al.* 2008). In this study we only consider the southern part of the western Alpine arc (Fig. 1a, b). The internal zone consists of a pile of metamorphic nappes with dominant Palaeogene N- or NW-directed structures (Choukroune *et al.* 1986). The structure of the metamorphic internal zone (Fig. 1b, c) consists of a refolded stack of units derived from the ocean (Piedmont zone) and its European margin (Briançonnais zone) (Tricart *et al.* 2006).

The Briançonnais zone mainly displays upper Palaeozoic to Mesozoic sediments and pre-Alpine basement rocks. A remarkable nappe stack involves the pre-, syn- and post-rift Tethyan sediments originating from a stretched margin (e.g. Claudel & Dumont, 1999). This stack of cover nappes was shortened during collision and, being a mechanically contrasted multilayer, gave rise to regional W- and E-verging folds and associated thrusts. The latter are known as the Briançonnais backfolds and backthrusts and correspond to the present-day Alpine fan-shaped structure (Tricart, 1984) metamorphosed under greenschist-facies conditions (Goffé *et al.* 2004 and references therein). The age of backthrusting is debated, and is either ascribed to the Oligocene (Tricart, 1984) or to the Eocene (Malusà, Polino & Martin, 2005)

period. The Briançonnais basement consists of pre-Alpine magmatic and metamorphic rocks. Its Permo-Carboniferous sedimentary cover is variably re-worked during the Alpine orogeny. The metamorphic evolution of these basement slices, where upper-blueschist- and/or eclogite-facies conditions have been deciphered (Goffé *et al.* 2004), contrasts with the evolution of the cover nappe pile. These significant metamorphic gaps are consistent with the existence of severe tectonic decoupling between the Briançonnais units.

The composite Piedmont zone (Fig. 1b, c) corresponds to the present-day juxtaposition of different structural levels of the palaeo-subduction wedge from the blueschist accretionary wedge (Schistes lustrés) to the eclogitized internal crystalline massif. The Schistes lustrés (Fig. 1c) consist of high pressure (HP) units including metamorphic marls, clays and limestones. Marls dominate (calcschists) and enclose hectometric to kilometric tectonic boudins of Triassic dolomites or Jurassic ophiolites sometimes interpreted as olistholiths (Tricart & Lemoine, 1986; Deville *et al.* 1992). Burial under blueschist-facies conditions during Late Cretaceous to early Eocene times built an accretionary wedge that was strongly reformed when collision relayed subduction in late Eocene times (Agard *et al.* 2002; Lardeaux *et al.* 2006; Tricart & Schwartz, 2006). In detail, the metamorphic conditions evolved from LT-blueschist conditions in the western part to high temperature (HT) blueschist in the eastern part of the complex (Tricart & Schwartz, 2006; Schwartz *et al.* 2009; Bousquet *et al.* 2008).

The Monviso ophiolitic unit, squeezed between the Schistes lustrés complex and the Dora-Maira internal crystalline massif, contains major remnants of the Tethyan oceanic lithosphere that were strongly deformed and metamorphosed under eclogite-facies conditions (Lombardo *et al.* 1978; Schwartz *et al.* 2000; Rubatto & Hermann, 2001) during Eocene times (Duchêne *et al.* 1997). Contrasted eclogitic conditions (e.g. Schwartz *et al.* 2000) indicate that the Monviso massif is an imbricate of units rapidly exhumed (1 cm yr^{-1}) within the subduction channel during Eocene times and accreted beneath the Schistes lustrés complex under blueschist-facies conditions at 20–35 km depth (Schwartz *et al.* 2000; Schwartz, Allemand & Guillot, 2001). The Monviso eclogites are separated from the Dora-Maira massif by a ductile normal fault (Blake & Jayko, 1990; Philippot, 1990; Schwartz, Allemand & Guillot, 2001).

Located in the lowermost structural position, the Dora-Maira internal crystalline massif corresponds to a stack of more or less deeply subducted continental basement slices involved in a ‘dome-like’ structure (Fig. 1c). Here again, significantly contrasted metamorphic conditions have been inferred (Chopin, Henry & Michard, 1991; Compagnoni & Rolfo, 2003). Quartz-bearing eclogite-facies rocks crop out at the top of the Dora-Maira dome and overlie a coesite-bearing eclogitic unit. This pile of thin (< 1 km) high-to-ultrahigh pressure metamorphic units overlies the

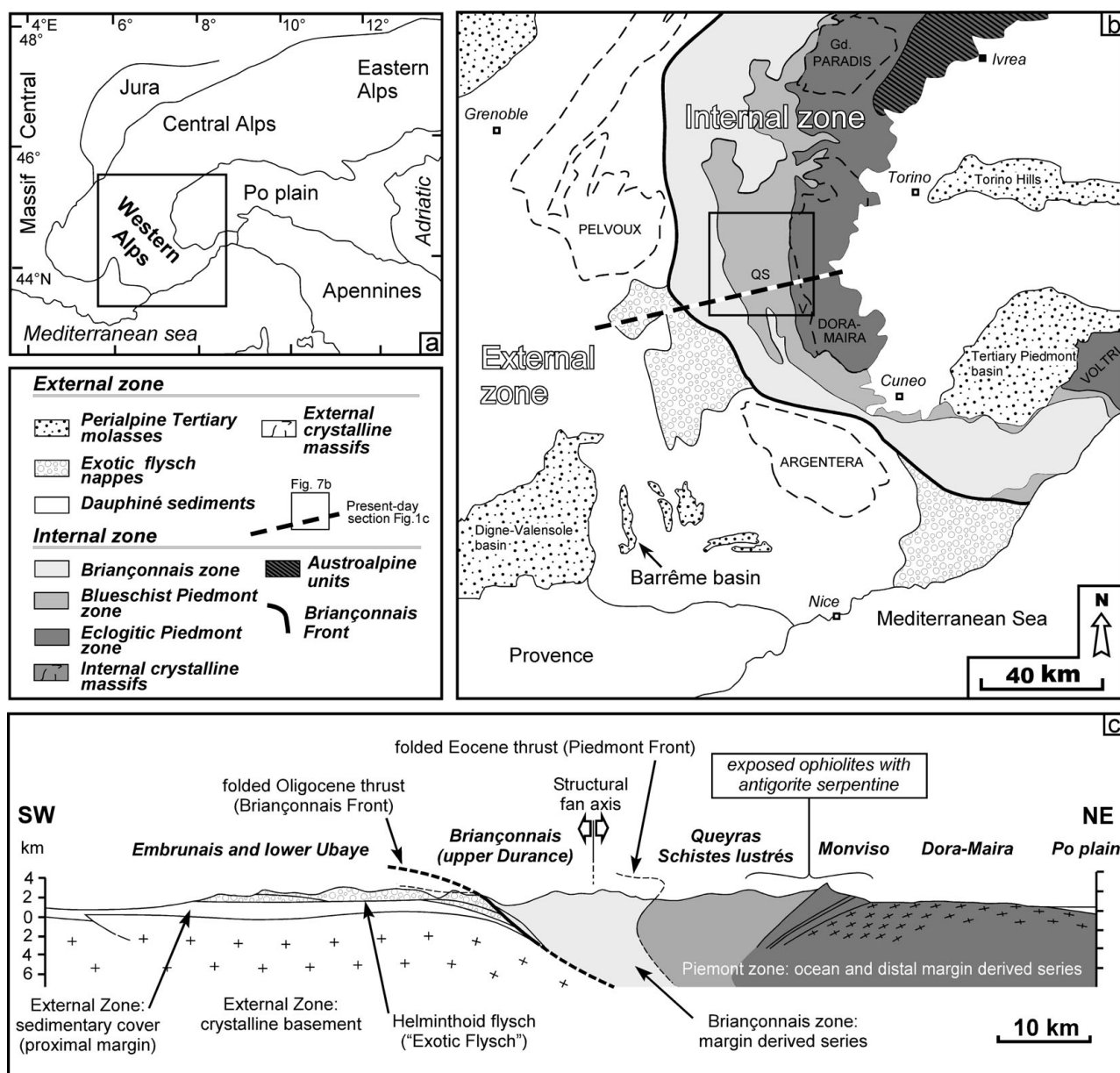


Figure 1. Geologic setting of the study area. (a) Geographic setting of the western Alps showing location of (b). (b) Tectonic sketch map of the western Alps showing the Barrême basin in the external zone. The internal zone is bounded by the Penninic deep crustal thrust to the west with: QS – Queyras Schistes lustrés; V – Monviso. The rectangle locates Figure 7b. (c) Sketch-section of the present-day structure. Presently, metamorphic serpentinite with antigorite but without lizardite (HT-blueschists and eclogites) crops out along both sides of the watershed (Eastern Queyras Schistes lustrés, Monviso).

lowermost Pinerolo-Sanfront blueschist unit along a thrust contact. The latter unit is similar, with respect to their lithologies, structural position and metamorphic evolution, to the Briançonnais basement slices.

In contrast to the internal zone, the external zone of the western Alps consists of pre-Alpine crystalline basement (Pelvoux and Argentera massifs) of the proximal European margin and its detached sedimentary cover of the Southern Subalpine Chains (Fig. 1b). The Alpine external zone is less shortened (Gratier, Ménard & Arpin, 1989) and only slightly metamorphosed, ranging up to greenschist-facies conditions (Goffé *et al.* 2004). Polystage shortening mainly occurred from Oligocene times onwards (e.g. Ford *et al.* 2006; Dumont *et al.* 2008 and references therein). Non-

metamorphic and gentle fold–thrust structures first developed in the Provence area until Eocene times in response to N–S compression. Superimposed Alpine structures *sensu stricto* developed from Oligocene times onwards when the effects of the Apulian plate indentation, first restricted to the internal arc, spread outwards through the external arc (Ford, Lickorish & Kuszniir, 1999). From middle Miocene times onwards up to the Present the external zone remains subject to active shortening while the internal zone undergoes extension (Sue & Tricart, 2003; Tricart *et al.* 2004).

In front of the internal zone, a flexural basin developed since middle Eocene times, and was the locus of deep sea turbidite sedimentation. The main witnesses to this flysch episode are the Grès d’Annot

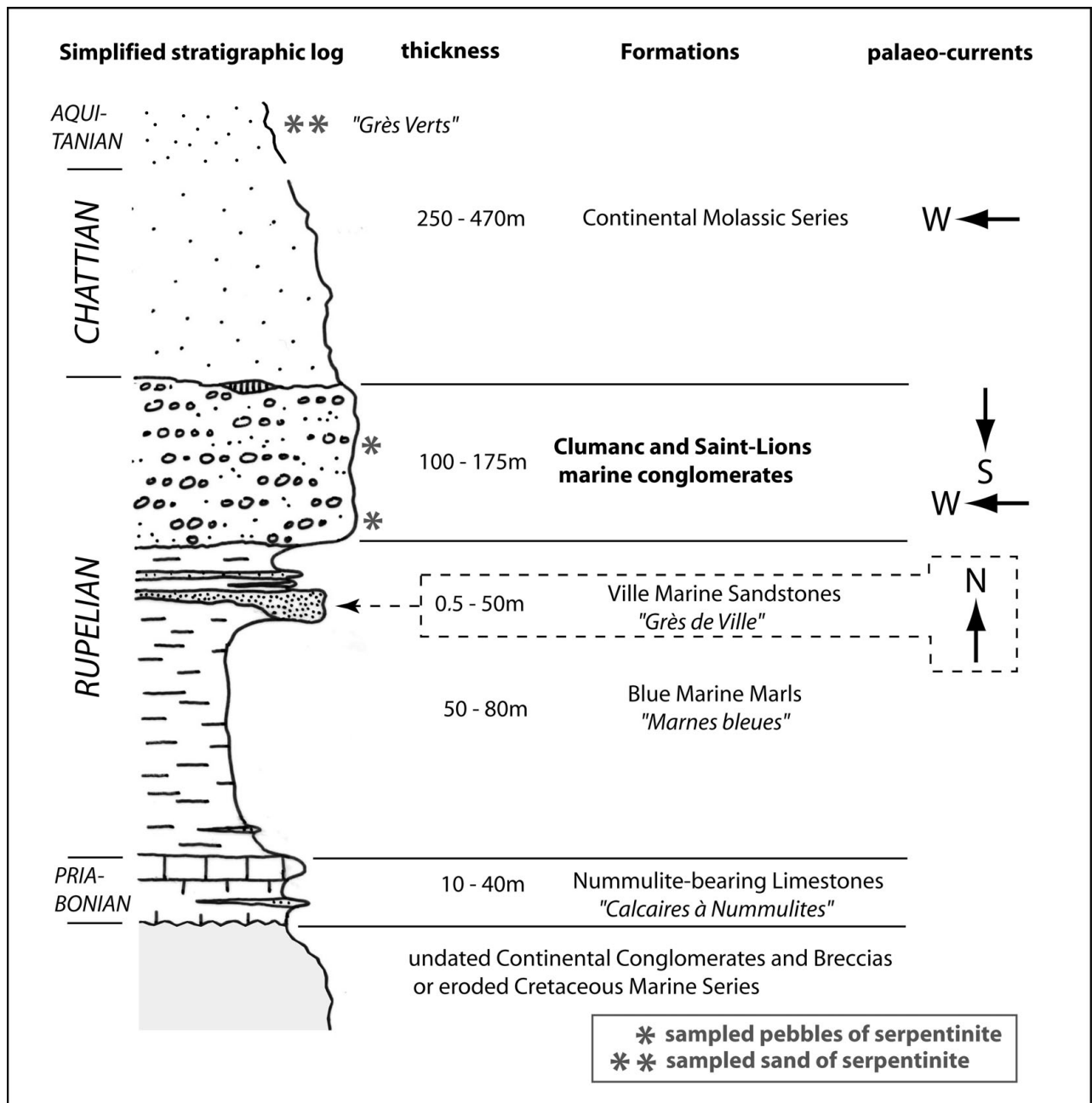


Figure 2. Simplified stratigraphic log of the Barrême basin molasse series. Depositional ages are from Callec (2001).

in the south and the Grès du Champsaur in the north (e.g. Sinclair, 2000; Sissingh, 2001; Ford & Lickorish, 2004), whose sedimentation started in middle and late Eocene times, respectively. Everywhere, sedimentation ended abruptly in early Oligocene times, owing to emplacement of the Helminthoid flysch nappe (exotic flysch in Fig. 1c; Kerckhove, 1969) coming from the internal zone. The structuring of the western Alpine belt in early Oligocene times was accompanied by enhanced mountain building (see discussion in Morag *et al.* 2008; Bernet & Tricart, 2011). Rapid erosion of this mountain belt might explain the fast regional cooling of the western Alpine belt during Oligocene times and the sudden supply of coarse metamorphic detritus along the northwestern flank of the western Alps (e.g. Morag *et al.* 2008; Bernet *et al.* 2009),

and in small basins developed on top of the belt (e.g. Polino, Ruffini & Ricci, 1991; Carrapa, Wijbrans & Bertotti, 2003). Nevertheless, the volume of these clastic sediments is globally modest, and the Adriatic foredeep on the internal side of the western Alps was starved of orogenic detritus (Garzanti & Malusà, 2008). As a matter of fact, the early Oligocene period is also the time of the flysch-to-molasse transition in the European foreland basin when flysch basins closed and were incorporated into the collision wedge. From that time onwards, small molasse basins formed in more and more external locations, as the Alpine deformation front migrated outwards through the external arc (e.g. Ford, Lickorish & Kusznir, 1999). This is well illustrated in the Barrême basin (Fig. 1b), where thin Palaeogene marine detrital formations (Fig. 2)

represent a shallow water equivalent to the more proximal Grès du Champsaur and Grès d'Annot flysch formations (e.g. Joseph & Lomas, 2004). The overlying molasse sediments in the Barrême basin were deposited as the basin was transported on the Digne thrust sheet (de Graciansky, 1972; Artoni & Meckel, 1998; Evans & Elliot, 1999). Subsequently, in late Oligocene times the stack of the metamorphic Briançonnais and Piedmont nappes was exhumed in brittle conditions (e.g. Malusà *et al.* 2005) and transported along the Briançonnais thrust front (Fig. 1). Possible modifications of detrital pathways at this stage will be investigated in this paper.

3. The sampled material

The Eocene to lower Oligocene so-called 'Nummulitic' transgressive sequence covered the European foreland of the outward migrating Alpine belt (Sinclair, 1997; Ford, Lickorish & Kuszniir, 1999). The 'Nummulitic' series was mainly deposited in a deep and underfilled flexural basin and it generally overlies a continental erosional surface. This sequence always shows the succession of three sedimentary facies of increasing water depth (the so-called 'Nummulitic trilogy'): (1) nearshore, *Nummulites*-bearing platform limestones; (2) hemipelagic foraminiferal (*Globigerina*) marls (Blue Marls Formation), and (3) clastic sediments. In the Barrême, the latter first appeared within the Blue Marls Formation as thin turbiditic sandstones, the Grès de Ville Formation. The latter formation is capped by lower Oligocene marine conglomerates (Clumanc and Saint-Lions conglomerates) interpreted as channelized fan delta slope deposits (Artoni & Meckel, 1998; Fig. 2).

In the Barrême basin, the Grès de Ville (Fig. 2) consists of silty mudstone and thin-bedded fine-grained sandstone with an erosive base, graded bedding and cross-stratification. They recorded N-directed palaeocurrents thanks to various sedimentary structures (flute casts, grooves, crescent and prod marks) and their clastic material originates from the Provence–Corsica–Sardinia domain (Evans & Elliott, 1999; Callec, 2001). By contrast, the Clumanc and Saint-Lions conglomerates are interpreted as a Gilbert delta with W- to SW-directed transport (Callec, 2001). They are

dominantly composed of coarse pebbles (generally 5 to 20 cm) with a sandy and fine-grained pebbly matrix (Callec, 2001) (Fig. 3). Different pebble populations were recognized early on by geologist Termier (1895 *in* Chauveau & Lemoine 1961; de Graciansky, Lemoine & Saliot, 1971) and especially Bodelle (1971), and are summarized in Table 1.

The Barrême thrust-top W-verging syncline, accommodating W–E shortening, was fed by a deltaic system providing local Cretaceous limestone (lowermost Clumanc conglomerate beds) and further internal Alpine clasts, including metamorphic and eruptive rocks (upper Clumanc beds and Saint-Lions conglomerates) (Fig. 2; Table 1). The metamorphic clasts of internal origin were initially mentioned by Termier (1895 *in* Chauveau & Lemoine, 1961). These internal (or Penninic) pebbles mainly consist of ophiolitic clasts (oceanic crust or mantle) and of associated pelagic sediments, in particular the easily recognizable red radiolarian cherts (Fig. 3). The ophiolitic clasts are mainly massive or brecciated basalts but some variolithic fragments of pillow-lava cortex and rare gabbros have also been found. Morag *et al.* (2008) described garnet-blueschist pebbles. The ^{40}Ar – ^{39}Ar geochronology of phengites from these metamorphic pebbles yielded a 34 ± 3 Ma age, suggesting a short time lag between exhumation of these rocks and their deposition in the lower Oligocene (34–28 Ma) basin. The Penninic provenance of the exotic pebbles in the Clumanc and Saint-Lions conglomerates (Fig. 2; Table 1) is consistent with the observed western to southwestern sedimentary transport directions. The latter strongly differs from the previous (Eocene to earliest Oligocene) N-directed transport, which longitudinally fed the Barrême basin from the uplifted Provence–Corsica–Sardinia domain (e.g. de Graciansky, 1982; Evans & Mange-Rajetzky, 1991; Callec, 2001; Joseph & Lomas, 2004). The high amount of serpentinite pebbles we found was unexpected considering the literature (e.g. Chauveau & Lemoine, 1961).

The Grès verts are dated as Aquitanian (Evans & Mange-Rajetzky, 1991), which is younger than the Clumanc and Saint-Lions conglomerates (Fig. 2; Table 1). These fine silty-sandstone and siltstones show crossed-bedding typical of low-energy fluvial channels

Table 1. Pebble population density of Clumanc and Saint-Lions conglomerates, modified after Bodelle (1971)

Sampling locality	Sedimentary rock	Metamorphic rock	Andesite	Eruptive rock
Clumanc's lower and middle layers	99 %, essentially Cretaceous limestone (generally 15 cm)	Quartzite, serpentinite	rare	gabbro, dolerite, granite, microdiorite, rhyolite
Clumanc's upper layer	80 % silt and quartz, 5–15 % of Cretaceous limestone. Some radiolarite, sandstone	> 1 %, migmatite, quartzite, serpentinite	15%	4 %, gabbro (euphotide), dolerite, granite, microdiorite, microgranite, pillow-lava cortex
Saint-Lions conglomerate	85 %, essentially calcareous sandstone, 2–3 % Cretaceous limestone, radiolarite	Rare	3%	12 %; granite, pillow-lava cortex, microdiorite, microgranodiorite

The lower layers of the lower Oligocene Clumanc conglomerate contain mainly limestone pebbles, and a lower proportion of metamorphic and eruptive rock. The upper layers contain more exotic rocks such as granitoids and various ophiolitic pebbles (gabbros, pillow-lava cortex, dolerites and serpentinites).

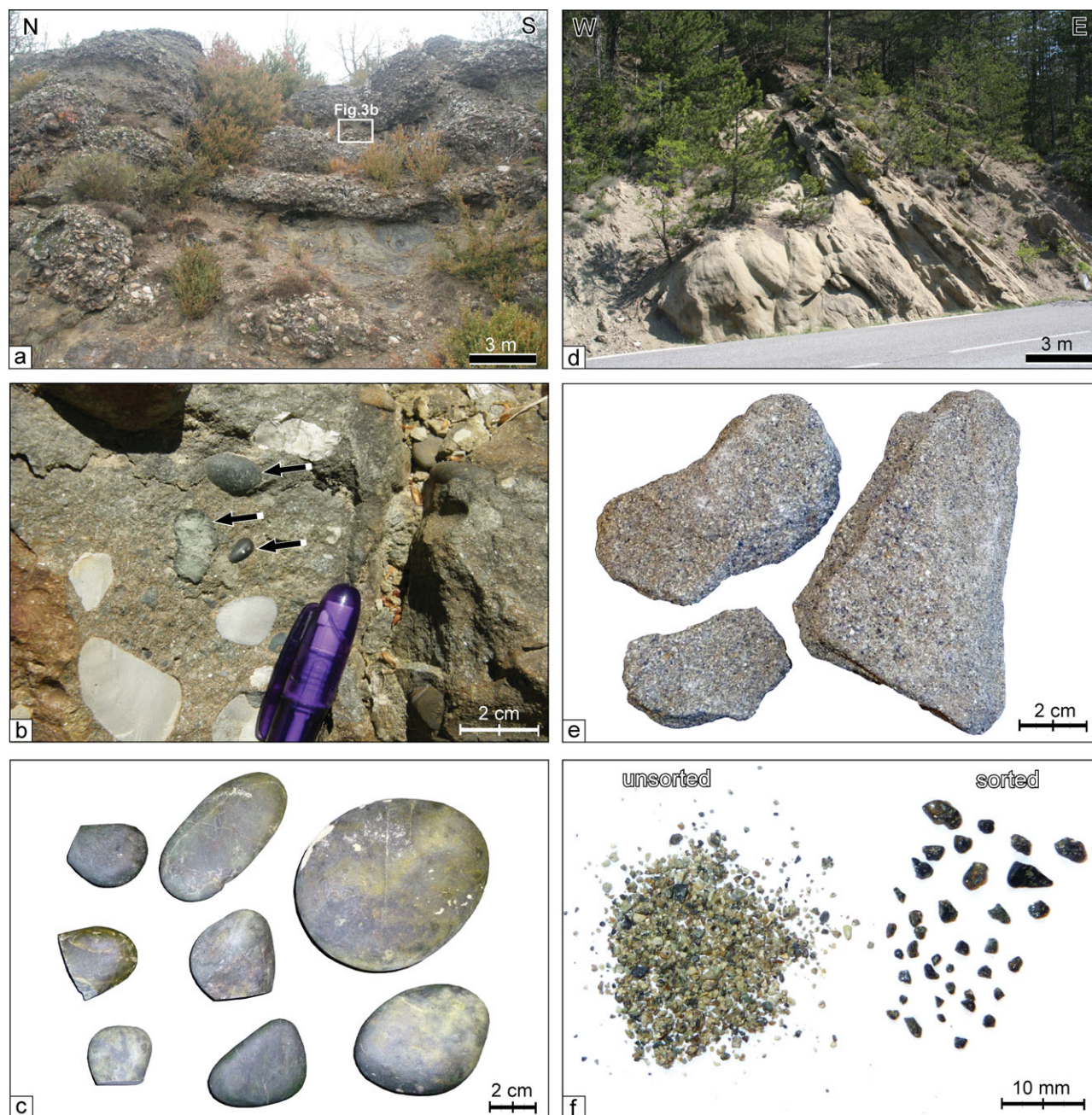


Figure 3. (Colour online) Conglomerates and sandstones from the Oligo-Miocene Barrême basin. (a) Outcrop view of the upper layer of the Clumanc Formation showing coarse conglomerate channels with erosive base and graded bedding incised in sandstones. The latter are interpreted as turbiditic deposits (Artoni & Meckel, 1998; Evans & Elliott, 1999; Callec, 2001). (b) Close-up view of matrix-supported pebbles in coarse sandstones. Centimetric serpentinite pebbles are underlined by black arrows, others are limestones. (c) Investigated serpentinite pebbles: sizes range from 3 cm to 6 cm. (d) Outcrop view of the Grès verts Formation: coarse sandstone-filled channels interbedded in flood-plain fine-grained silty-sandstones are interpreted as fluvial channels and over-bank deposits, respectively (Evans & Elliott, 1999). (e) Facies of the Grès verts sandstones. (f) Isolated grains of the Grès verts Formation, bulk composition to the left and sorted serpentinite grains to the right.

with ephemeral over-bank deposits. The heavy mineral content of the Grès verts is varied, but includes many serpentinite grains (Fig. 3) with a suspected source corresponding to the Embrunais-Ubaye nappes (Evans & Mange-Rajetsky, 1991).

We analysed 38 small serpentinite pebbles, each 1 to 3 cm in diameter, sharing a pronounced flat and blunt shape, sampled in the 'La Poste' conglomerate at Clumanc (Table 2; Fig. 3). More precisely, the majority

of our serpentinite pebbles come from the lowermost layers, while historically serpentinite pebbles were essentially described in the middle layers of the La Poste conglomerate (e.g. Chauveau & Lemoine, 1961) (Table 1). Therefore, we sampled the very earliest deposits of exotic clasts in the molasse basin, which is important for the subsequent interpretation. In addition, we sampled the stratigraphically younger continental deposits of the Aquitanian Grès verts in the same

Table 2. Location and petrologic nature of serpentinite pebble samples in the Barrême basin. The proportion of antigorite (Atg) versus lizardite (Lz) present in pebbles is statistically indicated

Samples	Nature	Formation (<i>see Fig. 2</i>)	Latitude	Longitude	Number of spectra	Serpentinite species
PT6011.1	1 pebble	Clumanc conglomerate	44°02'10" N	06°22'26" E	20	100 % Atg
PT7064A.1 to PT7064A.4	4 pebbles	Clumanc conglomerate	44°02'10" N	06°22'26" E	80	100 % Atg
LP01 to LP03	3 pebbles	Clumanc conglomerate	44°02'10" N	06°22'26" E	60	100 % Atg
LP10 to LP13	4 pebbles	Clumanc conglomerate	44°02'10" N	06°22'26" E	80	100 % Atg
PT9012.01 to PT9012.26	26 pebbles	Clumanc conglomerate	44°02'10" N	06°22'26" E	30	100 % Atg
MB153	20 fine grains	'grès verts' (green sandstones)	43°57'17" N	06°24'03" E	20	100 % Lz
MB154	25 coarse grains	'grès verts' (green sandstones)	43°57'17" N	06°24'03" E	25	80 % Lz/20 % Atg

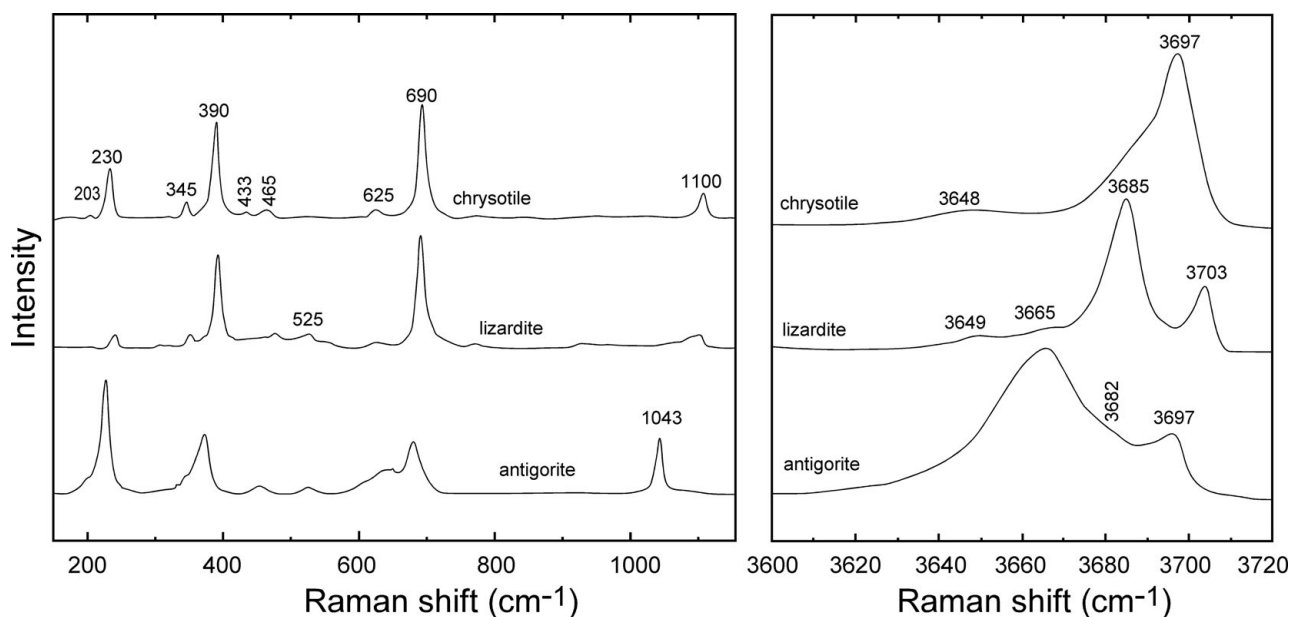


Figure 4. Characteristic Raman spectra for the different varieties of Alpine serpentinite with band assignments according to Rinaudo, Gastaldi & Belluso (2003), Groppo *et al.* (2006) and Auzende *et al.* (2006).

Barrême molasse series. This sandstone formation is exceptionally rich in serpentinite grains, and 45 single grains were analysed for this study (Table 2; Fig. 3).

4. Methodology: Raman spectroscopy

Serpentinite minerals are hydrous phyllosilicates (up to 13 wt% water) formed during the hydration of basic and ultrabasic rocks. Serpentinites, shown here with a simplified structural formula of $(\text{Mg}, \text{Fe}^{2+})_3 \text{Si}_2\text{O}_5(\text{OH})_4$, are made of superposed tetrahedral and octahedral layers. The structures of the three serpentinite species lizardite, chrysotile and antigorite are distinguished by different distortions and spatial arrangements of the tetrahedral and octahedral layers. Layers are flat in lizardite, rolled up in chrysotile and corrugated in antigorite (e.g. Wicks & O'Hanley, 1988). Natural serpentinites sampled in high-grade metamorphic environments show antigorite as the most abundant species (Scambelluri *et al.* 1995, Guillot, Hattori & De Sigoyer, 2000; Auzende *et al.* 2002; Groppo & Compagnoni, 2007). Experimental studies have also shown that antigorite is the stable variety under high pressure conditions (Ulmer & Trommsdorff, 1995; Wunder & Schreyer, 1997; Auzende *et al.*

2004). Lizardite and chrysotile are the major varieties of pseudomorphic textures observed in low-grade metamorphic serpentinites from oceanic lithosphere or ophiolites (Andréani *et al.* 2007). In this study, the different serpentinite species were characterized by Raman spectroscopy, coupled with petrographic observations on polished thin-sections of clasts. Raman spectroscopy was performed at the Laboratoire des Sciences de la Terre, Ecole Normale Supérieure de Lyon (ENS Lyon), France, with a Horiba Jobin-Yvon LabRam HR800 apparatus. The light source was an argon-ion laser to achieve 514.5 nm wavelengths. An Olympus™ BX30 open microscope equipped with $\times 50$ and $\times 80$ long-working distance objectives was coupled to a spectrometer to focus the laser beam to a 3 μm spot diameter. The Raman signal was collected in the backscattered direction. Acquisition time was about 60 seconds, distributed over three accumulation cycles, with a laser output power on the sample adjusted to between 10 and 60 mW, depending on the intensity of the signal. Raw or polished serpentinite clast samples were indifferently used. The spectral resolution was 1 cm^{-1} using 1800 gr mm^{-1} grating. The spectral regions from 150 to 1150 cm^{-1} and from 3600 to 3720 cm^{-1} (Fig. 4) were investigated because

they include lattice vibrational modes characteristic of serpentinite species (Rinaudo, Gastaldi & Belluso, 2003; Auzende *et al.* 2004; Groppo *et al.* 2006). The bands detected in these spectral regions are indicative of the molecular and crystalline structure of the sample. For all spectra the assignments of the band position and band width were determined using the Peakfit[®] software.

In the low frequency region, four main peaks near 230, 390, 690 and 1100 cm^{-1} characterize the spectra of lizardite and chrysotile (Rinaudo, Gastaldi & Belluso, 2003; Groppo *et al.* 2006). At lower frequencies, intense antigorite peaks occur at 226, 373, 680 and 1043 cm^{-1} . Therefore, the peak positions are different in comparison to other serpentines, and the peaks are much broader (Fig. 4). The peak at 1043 cm^{-1} allows easy distinguishing of the antigorite variety. Although weak, differences between chrysotile and lizardite can be clearly identified because of the sharpness of the Raman lines. In particular, a single high frequency band at 1100 cm^{-1} is observed in chrysotile whereas several convoluted bands are observed between 1060 and 1100 cm^{-1} in lizardite (Rinaudo, Gastaldi & Belluso, 2003; Groppo *et al.* 2006). In the high frequency region (Fig. 4), the OH vibrational mode shows a spectrum with an intense single peak at 3697 cm^{-1} in the case of chrysotile and a bimodal shaped spectra for the lizardite and antigorite (Fig. 4). The spectrum of lizardite is characterized by a fine bimodal shape with a primary band at 3685 cm^{-1} and a secondary band at 3703 cm^{-1} . The antigorite species presents a spectrum broader than the lizardite with a primary band near 3665 cm^{-1} and a secondary band centred at 3697 cm^{-1} . One to 20 Raman spectra were acquired on each lower Oligocene pebble and one spectrum was acquired on each single grain coming from the upper Oligocene/lower Miocene sandstones (Table 2).

5. Serpentinite mineralogy

For the 38 serpentinite clasts from the Clumanc conglomerate that we analysed, all the Raman spectra are typical for antigorite (Fig. 5a). No other variety of serpentinite was observed. This observation is confirmed by petrographic thin-section analysis. The initial ultrabasic rocks were fully recrystallized and the antigorite minerals form a typical interlocking texture that replaces olivine. The original magmatic pyroxene was totally replaced by oriented antigorite flake aggregates constituting bastite (Fig. 6).

In the Aquitanian sandstone 'Grès verts', 45 single grains were analysed; the Raman spectroscopy analysis of the single grains (Table 2) shows a mixture of dominant lizardite and subordinate antigorite. More precisely, lizardite is the only serpentine species present (sample MB153, Fig. 5c; Table 2) in the fine-grained, well-sorted sandstone layers. In contrast, the moderately to poorly sorted sandstone layers, with a larger variety of grain sizes in the fine- to coarse-

grained range, display 20 % of antigorite in the coarser fraction (sample MB154, Fig. 5b; Table 2) but lizardite still dominates (sample MB154, Fig. 5d; Table 2). Nowhere were chrysotile and talc detected.

6. Discussion

6.a. Origin of serpentinite pebbles and sand grains

Despite the difficulty of precisely establishing the P - T stability field of serpentine species (e.g. Evans, 2004) (Fig. 7a), an empiric approach has been developed by comparing the worldwide occurrence, including the western Alps, of serpentinite species with the P - T conditions recorded by associated metamorphic rocks in HP-LT metamorphic environments (Guillot, Hattori & De Sigoyer, 2000; Auzende *et al.* 2002, 2006; Groppo *et al.* 2006; Guillot *et al.* 2009). In summary, chrysotile and lizardite form under greenschist-facies conditions in oceanic crust or ophiolites, while lizardite alone testifies to upper-greenschist and LT-blueschist-facies conditions (Fig. 7a). Antigorite progressively replaces lizardite under intermediate blueschist-facies conditions. Antigorite becomes the exclusive serpentinite variety under HT-blueschist- to eclogite-facies conditions (Fig. 7a).

Thus, antigorite-bearing serpentinite pebbles from the lower Oligocene Clumanc conglomerate are only derived from HP-LT ophiolitic rocks metamorphosed under HT-blueschist- or eclogite-facies conditions, i.e. the internal zone (Fig. 1, 7b).

As palaeocurrent indicators favour a NE provenance for the detrital grains, the source of these pebbles has to be more precisely searched for in the SE vicinity of the Pelvoux massif and not in more southerly HP-LT metamorphic assemblages such as the Voltri massif, presently exposed to the south of the Tertiary Piedmont basin (Fig. 1b). Pure antigorite serpentinites are an important component of the HT-blueschist Schistes lustrés unit along the drainage divide between France and Italy (Fig. 7b). Pure antigorite serpentinites also crop out further east, in the Monviso eclogitic complex in Italy (Schwartz *et al.* 2000; Auzende *et al.* 2006).

The occurrence of both lizardite and antigorite grains in the upper Oligocene/lower Miocene serpentinite-bearing sandstones (Grès verts) contrast with the sole occurrence of antigorite pebbles in the lower Oligocene conglomerates. This suggests that the coarser antigorite fraction in the upper Oligocene/lower Miocene sandstone could derive from the same source, i.e. the HT-blueschist Schistes lustrés (or the Monviso eclogites) (Fig. 7a, b). Nevertheless, the occurrence of lizardite suggests a different source area, a less metamorphosed ophiolitic source, having escaped subduction and collision processes and only recording oceanic hydrothermal metamorphism. In the present-day Alpine framework, only the upper ophiolitic unit in the Chenaillet massif (Montgenèvre pass, upper Durance valley) escaped the subduction-collision metamorphic imprints, representing a part

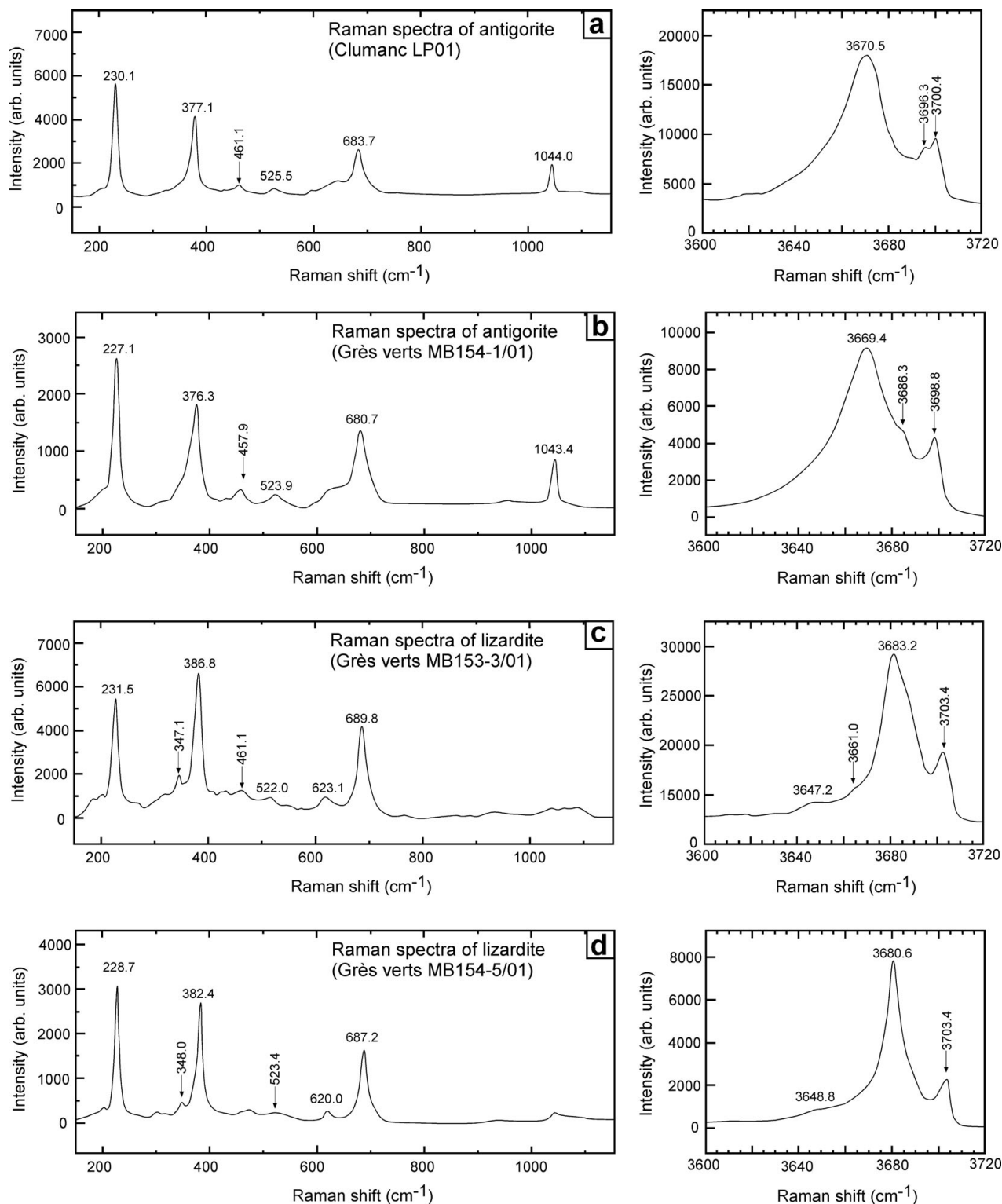


Figure 5. Typical Raman spectroscopy spectra of serpentinite varieties obtained from detrital ultramafic clasts (LP01) or sand grains (MB153 and MB154) from the Oligocene–Miocene Barrême basin. For each Raman spectrum the signal was analysed on two acquisition spectral windows and the characteristic bands were indicated. (a) and (b) Raman spectra of antigorite obtained, respectively, from the Clumanc conglomerate (sample LP01) and from the coarse to fine-grained sand fraction of the Grès verts (sample MB154). (c) and (d) Raman spectra of lizardite obtained, respectively, from the coarse-grained fraction of sample MB154, and from the homogeneously fine-grained sandstone sample MB153.

of the Tethyan oceanic lithosphere obducted onto the subduction wedge, towards the European continental margin (Goffé *et al.* 2004; Chalot-Prat, 2005; Schwartz *et al.* 2007). An alternative interpretation is that both

grains (antigorite and lizardite) were derived from a unique source in which lizardite and antigorite coexisted. This has been observed in the present-day eastern part of the Piedmont Schistes lustrés complex (Fig. 7b),

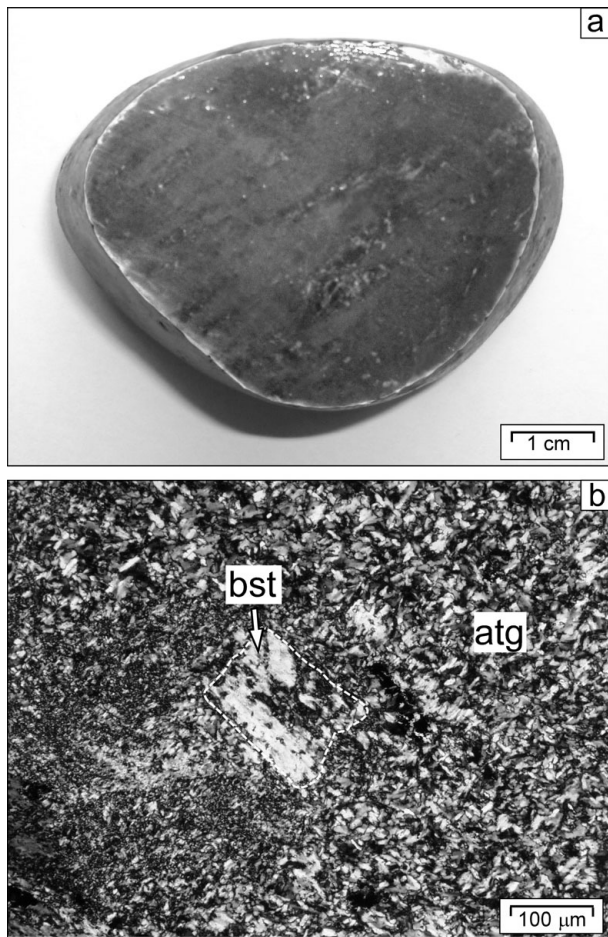


Figure 6. (a) Macroscopic view of the serpentinite pebble from the Clumanc conglomerate (LP01 sample). (b) Typical microstructures observed in thin-section under a polarizing optical microscope (crossed polarized). The matrix was full recrystallized into flakes of antigorite (atg) with an interlocking structure. The primary peridotitic pyroxene was replaced by oriented antigorite flake aggregates corresponding to 'bastite' antigorite (bst).

which was metamorphosed only under LT-blueschist-facies conditions (Agard, Vidal & Goffé, 2001; Goffé *et al.* 2004; Tricart & Schwartz, 2006). Concerning the antigorite-bearing upper Oligocene/lower Miocene sands, one cannot preclude the possibility that they partly result from recycling of Oligocene detrital sediments.

6.b. The heterogeneity of sources in terms of metamorphic grade

Contrary to the serpentinite clasts, other Penninic pebbles within lower Oligocene conglomerates have been analysed in the lower 70s (e.g. de Graciansky, Lemoine & Saliot, 1971). The basalts and their derivatives ('prasinite', 'diabases') essentially bear zeolite or greenschist-facies metamorphic assemblages, more rarely a blueschist-facies imprint. The rare gabbros bear different types of blueschist assemblages; 'calcschist' pebbles that likely originate from the Schistes lustrés complex are also observed (Morag *et al.* 2008).

The abundant red-purple pebbles of radiolarian cherts only show a very low-grade metamorphic imprint as radiolarites are preserved (Cordey *et al.* in press).

The upper Oligocene/lower Miocene sandstones contain a mixture of grains of serpentinites, unmetamorphosed radiolarites and LT (lawsonite-bearing) blueschist basalts. As for the lower Oligocene molasse, the upper Oligocene/lower Miocene molasse shows detrital grains were derived from source areas that experienced contrasted metamorphic conditions from those of the LT-blueschist facies to low-grade metamorphic conditions.

This heterogeneity both in the lower Oligocene and upper Oligocene/lower Miocene molasse deposits implies the erosion of a stack of ophiolite nappes that recorded contrasted P - T conditions, having the lithologic and metamorphic signatures of the Palaeogene Alpine accretionary wedge (Agard *et al.* 2002; Lardeaux *et al.* 2006; Yamato *et al.* 2007; Guillot *et al.* 2009).

The provenance of detrital sediments can be discussed. Indeed, it is classically admitted that the source of ophiolitic clasts in the lower Oligocene molasse of the Barrême basin was located in the Embrunais-Ubaye nappes (e.g. Evans & Mange-Rajetzky, 1991). In the present-day situation, these nappes represent the closest outcrops of the internal or Penninic units, in an E to NE direction from the Barrême basin, which is the provenance direction of exotic detritus according to sedimentological analyses (Callec, 2001). Because these nappes are devoid of any HP-LT metamorphic imprint, they cannot represent the source of HP-LT metamorphic detritus like the antigorite-bearing serpentinite we sampled in the Barrême basin.

6.c. The sudden arrival of mixed metamorphic clasts into the Barrême molasse basin

The sudden erosion in early Oligocene times of the stack of variably metamorphosed nappes inherited from the Palaeogene accretionary wedge fits well with two observations concerning the internal zone, SE of the Pelvoux massif.

First, structural analysis allows identifying a severe early Oligocene shortening. The corresponding post-nappe folds and thrusts are associated with the second and third regional schistosity in the Briançonnais zone. They display, respectively, outward and inward vergence, resulting in the so-called Briançonnais fan-shaped structure (Tricart *et al.* 2006 and reference therein). In the whole internal zone, it has been proposed that this major syncollisional shortening was responsible for the bending of the arc (Thomas *et al.* 1999; Collombet *et al.* 2002).

Second, detrital thermochronological analysis of Barrême Oligocene molasse recently allowed the estimation of very short lag times from fission-track ages for zircons grains (Bernet & Tricart, 2011; Jourdan *et al.* 2011), consistent with ^{40}Ar - ^{39}Ar ages of phengites in pebbles from the same sediments (Morag

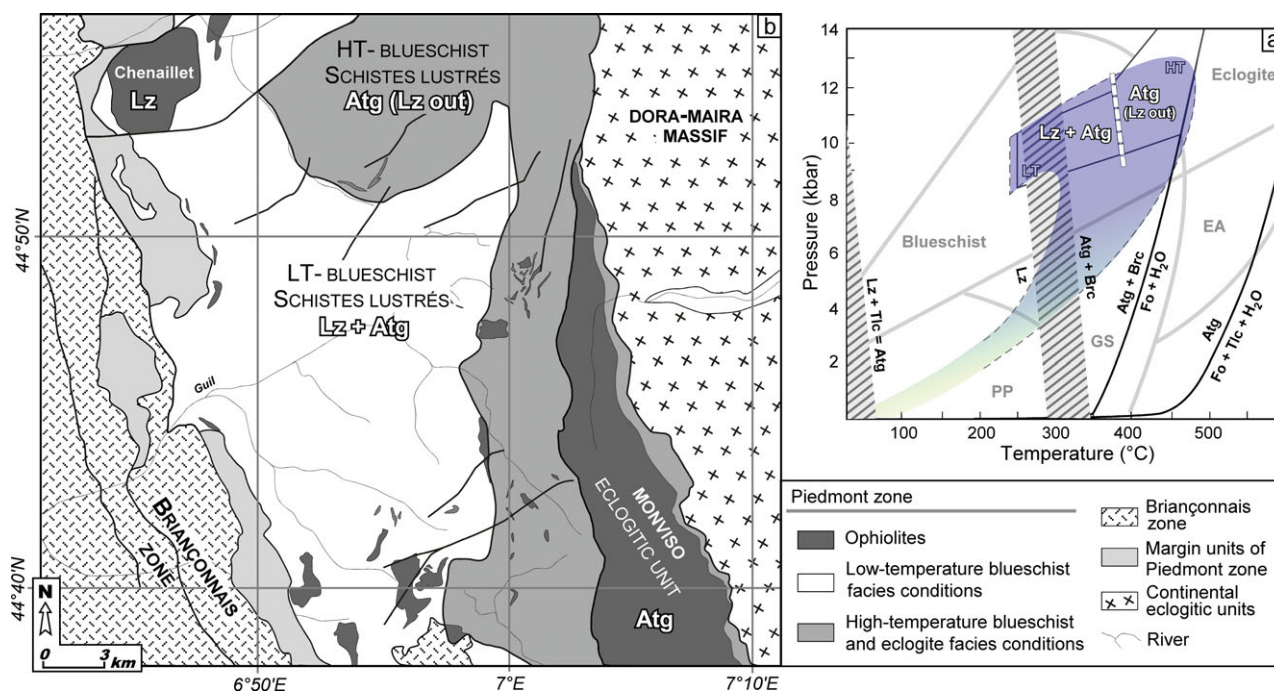


Figure 7. (Colour online) (a) Phase diagram of antigorite and lizardite (after Evans, 2004) with Lz – lizardite, Atg – antigorite, Tlc – talc, Brc – brucite, Fo – forsterite. Up to 380 °C the lizardite is entirely destabilized. The blueschist pressure–temperature (P–T) conditions in the Queyras Schistes lustrés are indicated. Metamorphic facies are from Spear (1993): PP – prehnite pumpellyite, GS – greenschist, EA – epidote amphibolite. (b) Simplified tectonic map of the Schistes lustrés of the Piedmont zone. This domain is bounded by the Briançonnais zone to the west and by the internal crystalline massif of Dora-Maira and by the Monviso eclogitic unit to the east. The Schistes lustrés complex corresponds to a calcschist-rich accretionary wedge, enclosing scattered ophiolitic bodies, metamorphosed under HP-facies conditions, from LT-blueschist-facies conditions (lizardite and antigorite-bearing serpentinite) to the west to HT-blueschist-facies conditions (only antigorite-bearing serpentinite) to the east.

et al. 2008). Comparison to *in situ* thermochronological data acquired from the internal zone led Bernet & Tricart (2011) and Jourdan *et al.* (2011) to propose erosion-driven fast exhumation (1–3 mm y⁻¹) in early Oligocene times. Tectonic exhumation is likely to have been enhanced by erosional processes. Consequently, at that time, these internal zones are supposed to have formed an elevated and narrow mountain range. In summary, converging approaches allow us to propose that the source of mixed metamorphic and very low-grade metamorphic ophiolitic detritus that suddenly fed into the Barrême molasse basin during early Oligocene times was an elevated and possibly narrow mountain range (Fig. 8a). The volume of Oligocene sediments preserved in the proximal Alpine foreland (Barrême basin) is quite low but a much larger amount of sediment is ponded within the Oligocene grabens of the Liguro-Provençal rift, the Rhône valley and the Gulf of Lion (Séranne, 1999).

6.d. Implications for the evolution of the internal western Alps

Looking for the potential source areas of the sand and pebbles of antigorite-bearing serpentinites in the Barrême basin molasse deposits, we took into account different constraints relative to the metamorphic grade, and structural and orogenic history of the internal zone, but also sedimentological constraints relative to

the Barrême basin stratigraphy. The source we are looking for must present lithologies such as those presently exposed in the Piedmont zone. As a working hypothesis we consider a generally N–S-trending, elevated, subaerially exposed accretionary wedge (Platt, 1986, 1987, 1993), which experienced syncollisional shortening and unroofing during early Oligocene times (Fig. 8a). Its shape probably corresponded to the present-day internal zone, but extended outwards to the presently exposed exotic flysch nappes (Fig. 1b, c). The pile of shallow-dipping nappes displays intense fold and thrust structures, due to early Oligocene shortening, especially westward-directed structures (Fig. 8). Nevertheless, the whole structure was inherited from the Palaeogene accretionary wedge and displays a general metamorphic gradient. The base of the nappe pile corresponds to Subbriançonnais and Briançonnais nappes with HP (lawsonite-bearing) greenschist metamorphism, being covered by the Piedmont nappes inherited from the Palaeogene accretionary wedge. In the frontal part, the LT-blueschist-facies unit cropped out, while HT-blueschists were already exhumed (Fig. 8) in the steep rear part of the internal wedge (Yamato *et al.* 2007).

The location of eclogitic units within the early Oligocene structure deserves specific discussion. Geometrically, they possibly could have topped this wedge, cropping out along the highest parts of the corresponding mountain range, knowing that the

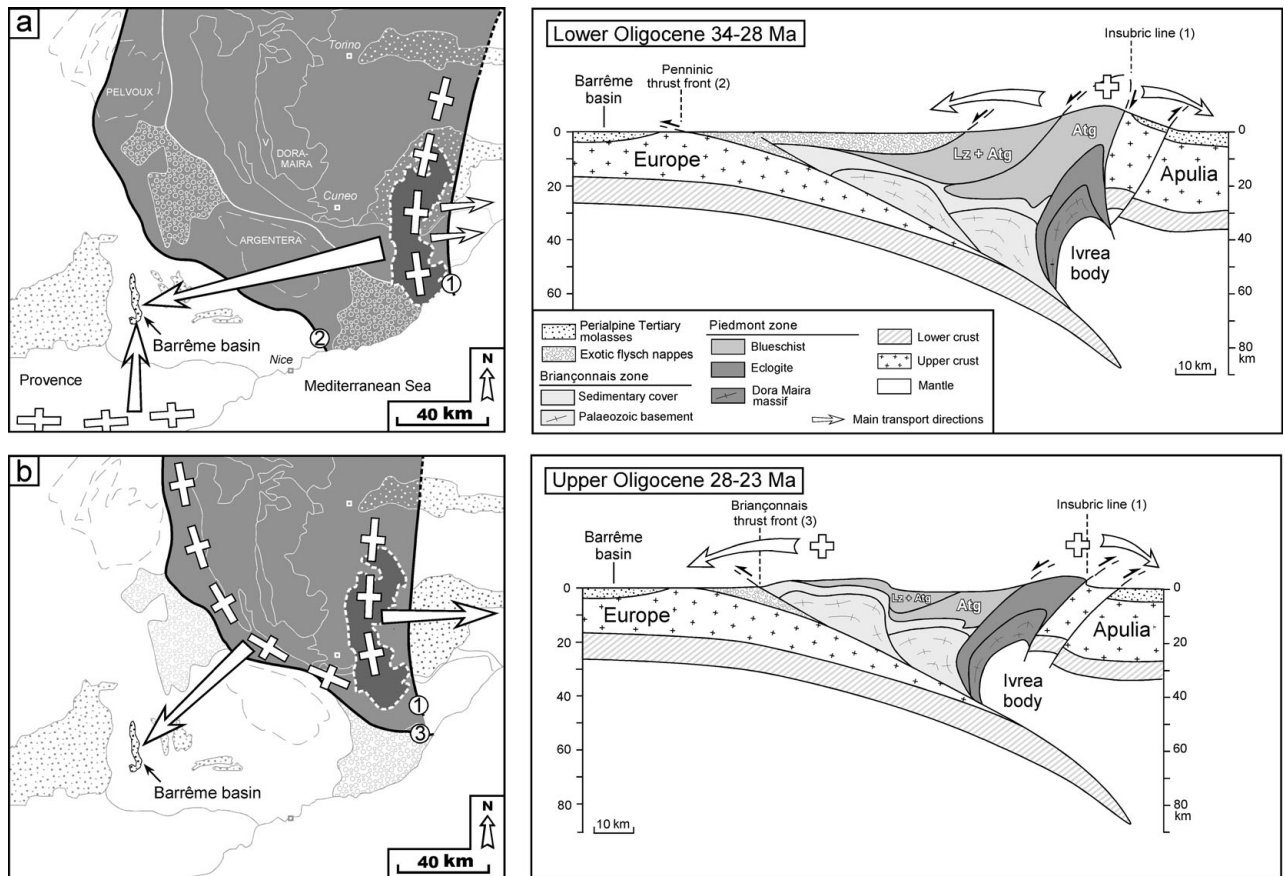


Figure 8. Palinspastic maps and cross-section reconstructions showing the evolution of the relief zones from early to late Oligocene times (based on Schmid & Kissling, 2000; Ford *et al.* 2006). (a) During early Oligocene times the main relief zones (white cross) were located above the Dora-Maira massif and in Provence. These two main relief zones feed the Barrême basin while the Tertiary Piedmont basin and Torino Hills are only fed by the internal Alpine relief with blueschist clasts. (b) During late Oligocene times the activation of the Briançonnais thrust front allows the formation of a westward relief zone feeding the Barrême basin while in the internal Alpine zone the persistence of high relief feeds the Tertiary Piedmont basin and the Torino Hills with eclogitic clasts.

antigorite-bearing clasts may as well originate from both blueschist- and eclogite-bearing nappes. Up to now no evidence for the erosion of eclogites was found in the Barrême basin. Presently, eclogites are only exposed along the Italian flank of the Alps forming the present Monviso massif (Lombardo *et al.* 1978; Schwartz *et al.* 2000). Further to the north they crop out in the high Maurienne valley (Rolland *et al.* 2000) and in the Zermatt-Saas zone (Barnicoat, 1985). In the opposite direction, and also very far away, eclogites crop out in the Voltri group of Liguria, where their first detrital reworking in the Tertiary Piedmont basin started during early Oligocene times (Federico *et al.* 2004). Concerning the timing of exhumation along our transect, eclogite boulders do not appear in the Torino Hills conglomerates, at the internal foot of the mountain range, before early Miocene times (Polino, Ruffini & Ricci, 1991). Fission-track analyses in the Monviso massif confirm that these eclogites were exhumed later than Miocene times and were structurally located beneath the Schistes lustrés accretionary wedge (Schwartz *et al.* 2007; Yamato *et al.* 2007). By early Oligocene times the eclogitic unit forming the serpentinite subduction channel was not yet

being exhumed along the studied transect (e.g. Guillot *et al.* 2009). The only exposed HP–LT metamorphic rocks were the blueschists coming from the Schistes lustrés accretionary subduction wedge. The variation of serpentine species from antigorite to lizardite between early Oligocene and late Oligocene/early Miocene times in the Barrême basin is interpreted as a shift of the palaeo-relief through time enhancing drainage system modifications. During early Oligocene times the prominent relief was probably located above the HT-blueschist zone (Fig. 8a) and progressively a second zone of relief developed westwards above the LT-blueschist zone (Fig. 8b). Nevertheless, in the lower Miocene Torino Hills conglomerates, the abundant arrival of decimetric to metric blocks of blueschists, with serpentinites representing more than 50% of the detrital sediments, and the first arrival of eclogites (2%) (Polino, Ruffini & Ricci, 1991) suggests that rapid surface uplift enhanced erosion and created high relief persisting in the vicinity of the present-day Torino Hills.

Thus we propose the following scenario to explain the mineralogical evolution recorded on both flanks of the young Alpine orogenic system during Oligocene and early Miocene times. The transition

from subduction to collision by early Oligocene times induced the rapid and prominent aerial exposure of the eastern part of the HP–LT accretionary wedge (Fig. 8a) and predominantly fed the external molasse basins. From early Oligocene to early Miocene times, the relief shifted westwards due to the uplift of the frontal part of the collisional wedge (Briançonnais zone) in response to the activation of the Briançonnais thrust front (Fig. 8b). This renewed topography and dynamics enhanced erosion of the external part of the accretionary wedge (LT-blueschist). In the eastern part, the vertical indentation at the rear of the accretionary wedge related to the emplacement of the Ivrea body (Schmid & Kissling, 2000) allowed the progressive exhumation of eclogites, and focused erosion fed the internal molasse basins in the Po plain (Torino Hills and Tertiary Piedmont basin in Fig. 1b). At that time (late Oligocene to early Miocene), the western Alps progressively acquired its doubly vergent structure (Fig. 8b).

7. Conclusions

Sands and conglomerates derived from blueschist-facies metamorphic rocks have some characteristic minerals such as glaucophane that are poorly resistant to transport or diagenesis in a sedimentary basin. Serpentinite, hitherto little studied, may be a more reliable marker of HP–LT source rocks in provenance studies. In order to quickly identify serpentine species in sedimentary rocks we propose to use Raman spectroscopy on single detrital clasts. We successfully applied this method to detrital serpentinite from the Barrême basin, in the western Alpine foreland. Mineralogical analysis by Raman spectroscopy shows that serpentinite pebbles from the lower Oligocene conglomerates in the Barrême basin consist entirely of antigorite, indicative of HT-blueschist-facies metamorphism.

During early Oligocene times, palaeocurrent indicators indicate a shift from a southern provenance (Provencal shelf and the Corso-Sardinian massif) to a northeastern provenance of detrital grains in the Barrême molasse basin. Thus the source of the lower Oligocene pebbles has to be searched for in the internal part of the Alps, SE of the Pelvoux massif. The arrival of such exotic clasts reveals the erosion of a suddenly raised mountain range in the internal Alpine zones along the same transect, the Piedmont cordillera, as a consequence of major shortening pulses. The coexistence of metamorphic pebbles (abundant antigorite clasts but also rare blueschist gabbros) with non-metamorphic radiolarite clasts constrains the lithologic composition and structure of the sediment source area. The presence of metamorphic ophiolitic material contradicts the classical view that the only source of exotic clasts in the lower Oligocene Barrême molasse basin is located in the Embrunais-Ubaye flysch nappes that glided in front of the Alpine wedge.

On the contrary we propose that the supply of exotic clasts to the Barrême basin is a direct consequence of the major syncollisional shortening experienced by the Palaeogene accretionary wedge in early Oligocene times, by 34–28 Ma, to the SE of the Pelvoux massif. The remnants of this refolded subduction wedge correspond to the present-day deeply eroded internal zone. The absence of eclogite clasts on both flanks of the early Oligocene cordillera means that eclogitic units were not exhumed during early Oligocene times along the Monviso transect, contrary to what is known along the more southerly Liguria transect.

The same mineralogical analysis by Raman spectroscopy was also conducted on serpentinite sand grains from the upper Oligocene/lower Miocene Grès verts of the Barrême basin. The analysed clasts consist of antigorite and dominant lizardite, to some part depending on grain size, indicative of a change through time in source rock lithology. This observation is compatible with a westward propagation of the cordillera with erosion of lesser metamorphic units during ongoing collision. Simultaneously, the increasing arrival of HP ophiolitic materials in the Po plain suggest the persistence of high relief in the internal zone, maintained by deep vertical indentation of the Ivrea body.

Acknowledgements. We gratefully acknowledge M. Malusà and G. Vignaroli for their careful suggestions and comments. This study was supported by the Agence Nationale de la Recherche project no. ANR-08-BLAN-0303-01 “Erosion and Relief Development in the Western Alps”.

References

- AGARD, P., MONIÉ, P., JOLIVET, L. & GOFFÉ, B. 2002. Exhumation of the Schistes Lustrés complex: in situ laser probe Ar-40/Ar-39 constraints and implications for the Western Alps. *Journal of Metamorphic Geology* **20**, 599–618.
- AGARD, P., VIDAL, O. & GOFFÉ, B. 2001. Interlayer and Si content of phengite in HP–LT carpholite-bearing metapelites. *Journal of Metamorphic Geology* **19**, 477–93.
- ANDRÉANI, M., MÉVEL, C., BOULLIER, A. M. & ESCARTIN, J. 2007. Dynamic control on serpentine crystallisation in veins: constraints on hydration processes in oceanic peridotites. *Geochemistry, Geophysics, Geosystems* Q02012, doi: 10.1029/2006GC001373.
- ARTONI, A. & MECKEL, L. D. III. 1998. History and deformation rates of a thrust sheet top basin: the Barrême basin, western Alps, SE France. In *Cenozoic Foreland Basins of Western Europe* (eds A. Mascle, C. Puigdefàbregas, H. P. Luterbacher & M. Fernández), pp. 213–37. Geological Society of London, Special Publication no. 134.
- AUZENDE, A. L., DANIEL, I., REYNARD, B., LEMAIRE, C. & GUYOT, F. 2004. High-pressure behaviour of serpentine minerals: a Raman spectroscopic study. *Physics and Chemistry of Minerals* **31**, 269–77.
- AUZENDE, A. L., DEVOUARD, B., GUILLLOT, S., DANIEL, I., BARONNET, A. & LARDEAUX, J. M. 2002. Serpentinites from Central Cuba: petrology and HRTEM study. *European Journal of Mineralogy* **14**, 905–14.

- AUZENDE, A. L., GUILLOT, S., DEVOUARD, B. & BARONNET, A. 2006. Serpentinites in an Alpine convergent setting: effects of metamorphic grade and deformation on microstructures. *European Journal of Mineralogy* **18**, 21–33.
- BARNICOAT, A. C. 1985. High-pressure metamorphism in the Zermatt-Saas zone of the Swiss Alps. *Journal of the Geological Society, London* **142**, 1243–43.
- BERNET, M., BRANDON, M., GARVER, J., BALESTIERI, M. L., VENTURA, B. & ZATTIN, M. 2009. Exhuming the Alps through time: clues from detrital zircon fission-track thermochronology. *Basin Research* **21**, 781–98.
- BERNET, M. & GARVER, J. I. 2005. Fission-track analysis of detrital zircon. In *Low-Temperature Thermochronology* (eds P. Reiners & T. Ehlers), pp. 205–38. Reviews in Mineralogy & Geochemistry no. 58.
- BERNET, M. & SPIEGEL, C. 2004. Introduction: Detrital thermochronology. In *Detrital Thermochronology: Provenance analysis, Exhumation and Landscape Evolution of Mountain Belts* (eds M. Bernet & C. Spiegel), pp. 1–8. Geological Society of America, Special Publication no. 378.
- BERNET, M. & TRICART, P. 2011. The Oligocene orogenic pulse in the Southern Penninic Arc (Western Alps): structural, sedimentary and thermochronological constraints. *Bulletin de la Société géologique de France* **182**, 25–36.
- BLAKE, M. C. & JAYKO, A. S. 1990. Uplift of very high pressure rocks in the western Alps: evidence for structural attenuation along low angle faults. In *Deep Structure of the Alps* (eds F. Roure, P. Heitzmann & R. Polino), pp. 228–37. Mémoire de la Société Géologique de France 156.
- BODELLE, J. 1971. Les formations nummulitiques de l'Arc de Castellane. Published Ph.D. thesis, Université de Nice. *Documents du BRGM* **2**, 585 pp.
- BOUSQUET, R., OBERHÄNSLI, R., GOFFÉ, B., WIEDERKEHR, M., KOLLER, F., SCHMID, S. M., SCHUSTER, R., ENGI, M., BERGER, A. & MARTINOTTI, G. 2008. Metamorphism of metasediments at the scale of an orogen: a key to the Tertiary geodynamic evolution of the Alps. In *Tectonic Aspects of the Alpine-Dinaride-Carpathian System* (eds S. Siegesmund, B. Fügenschuh & N. Froitzheim), pp. 393–411. Geological Society of London, Special Publication no. 298.
- BURBANK, D. W. 2002. Rates of erosion and their implications for exhumation. *Mineralogical Magazine* **66**, 25–52.
- CALLEC, Y. 2001. La déformation synsédimentaire des bassins paléogènes de l'arc de Castellane. *Mémoire des Sciences de la Terre de l'École des Mines de Paris* **43**, 1–347.
- CARRAPA, B., WIJBRANS, J. & BERTOTTI, G. 2003. Episodic exhumation in the Western Alps. *Geology* **31**, 601–4.
- CARTER, A. & BRISTOW, C. S. 2000. Detrital zircon geochronology: enhancing the quality of sedimentary source information through improved methodology and combined U–Pb and fission-track techniques. *Basin Research* **12**, 47–57.
- CHALOT-PRAT, F. 2005. An underformed ophiolite in the Alps: Field and geochemical evidence for a link between volcanism and shallow plate tectonic processes. In *Plates, Plumes, and Paradigms* (eds G. R. Foulger, J. H. Natland, D. C. Presnall & D. L. Anderson), pp. 751–80. Geological Society of America, Special Paper no. 388.
- CHAUVEAU, J. C. & LEMOINE, M. 1961. Contribution à l'étude géologique du synclinal tertiaire de Barrême (moitié nord). *Bulletin de la Carte géologique de France* **264**, 147–78.
- CHOPIN, C., HENRY, C. & MICHARD, A. 1991. Geology and petrology of the coesite bearing terrain, Dora-Maira massif, western Alps. *European Journal of Mineralogy* **3**, 263–91.
- CHOUKROUNE, P., BALLÈVRE, M., COBBOLD, P., GAUTIER, Y., MERLE, O. & VUICHARD, J. P. 1986. Deformation and motion in the Western Alpine Arc. *Tectonics* **5**, 215–26.
- CLAUDEL, M. E. & DUMONT, T. 1999. Early and Late Jurassic rifting events in the French Briançonnais relative to the evolution of the Ligurian Tethys and Valais oceans. *Eclogae Geologicae Helveticae* **92**, 45–61.
- COLLOMBET, M., THOMAS, J. C., CHAUVIN, Y., TRICART, P., BOUILLIN, J. P. & GRATIER, J. P. 2002. Counterclockwise rotation of the western Alps since the Oligocene: new insights from paleomagnetic data. *Tectonics* **21**, 11–15.
- COMPAGNONI, R. & ROLFO, F. 2003. UHPM units in the western Alps. *European Mineralogy Union Notes in Mineralogy* **5**, 13–49.
- CORDEY, F., TRICART, P., GUILLOT, S. & SCHWARTZ, S. In press. Dating the Tethyan ocean in the Western Alps with radiolarite pebbles from Oligocene foreland molasse (southeast France). *Swiss Journal of Geosciences*.
- COWARD, M. P. & DIETRICH, D. 1989. Alpine Tectonics: an overview. In *Alpine Tectonics* (M. P. Coward, D. Dietrich & R. G. Parks), pp. 1–29. Geological Society of London, Special Publication no. 45.
- DEVILLE, E., FUDRAL, S., LAGABRIELLE, Y., MARTHALER, M. & SARTORI, M. 1992. From oceanic closure to continental collision: a synthesis of the Schistes lustrés metamorphic complex of the western Alps. *Geological Society of America Bulletin* **104**, 127–39.
- DICKINSON, W. R. & SUCZEK, C. A. 1979. Plate tectonics and sandstone composition. *American Association of Petroleum Geologists Bulletin* **63**, 2164–82.
- DUCHÈNE, S., Blichert-Toft, J., LUIS, B., TÉLOUK, P., LARDEAUX, J. M. & ALBARÈDE, F. 1997. The Lu–Hf dating of garnets and the ages of the Alpine high-pressure metamorphism. *Nature* **387**, 586–9.
- DUMONT, T., CHAMPAGNAC, J.-D., CROUZET, C. & ROCHAT, P. 2008. Multistage shortening in the Dauphiné zone (French Alps): the record of Alpine collision and implications for pre-Alpine restoration. *Swiss Journal of Geosciences* **101**, 89–110.
- EVANS, B. W. 2004. The serpentinite multisystem revisited: chrysotile is metastable. *International Geology Review* **46**, 479–506.
- EVANS, M. J. & ELLIOTT, T. 1999. Evolution of a thrust-sheet-top basin: the Tertiary Barrême basin, Alpes de Haute Provence, France. *Geological Society of America Bulletin* **111**, 1617–43.
- EVANS, M. J. & MANGE-RAJETZKY, M. A. 1991. The provenance of sediments in the Barrême thrust-top basin, Haute-Provence, France. In *Developments in Sedimentary Provenance Studies* (eds A. C. Morton, S. P. Todd & P. D. W. Haughton), pp. 323–42. Geological Society of London, Special Publication no. 57.
- FEDERICO, L., CAPPONI, G., CRISPINI, L. & SCAMBELLURI, M. 2004. Exhumation of alpine high-pressure rocks: insights from petrology of eclogite clasts in the Tertiary Piedmontese basin (Ligurian Alps, Italy). *Lithos* **74**, 21–40.
- FORD, M., DUCHENE, S., GASQUET, D. & VANDERHAEGHE, O. 2006. Two-phase orogenic convergence in the external and internal SW Alps. *Journal of the Geological Society, London* **163**, 815–26.

- FORD, M. & LICKORISH, W. H. 2004. Foreland basin evolution around the western Alpine arc. In *Deep-water Sedimentation in the Alpine basin of SE France: New perspectives on the Grès d'Annot* (eds P. Joseph & S. A. Lomas), pp. 39–63. Geological Society of London, Special Publication no. 221.
- FORD, M., LICKORISH, W. H. & KUSZNIR, N. J. 1999. Tertiary foreland sedimentation in the Southern Subalpine Chains, SE France: a geodynamic appraisal. *Basin Research* **11**, 315–36.
- GARZANTI, E., ANDO, S. & SCUTELLA, N. 2000. Actualistic ophiolite provenance: the Cyprus case. *Journal of Geology* **108**, 199–218.
- GARZANTI, E. & MALUSÀ, M. 2008. The Oligocene Alps: domal unroofing and drainage development during early orogenic growth. *Earth and Planetary Science Letters* **268**, 487–500.
- GARZANTI, E., VEZZOLI, G., ANDO, S., LAVE, J., ATTAL, M., FRANCE-LANORD, C. & DECELLES, P. 2007. Quantifying sand provenance and erosion (Marsyandi River, Nepal Himalaya). *Earth and Planetary Science Letters* **258**, 500–15.
- GOFFÉ, B., SCHWARTZ, S., LARDEAUX, J.-M. & BOUSQUET, R. 2004. Exploratory notes to the map: metamorphic structure of the Alps, Western and Ligurian Alps. *Mitteilungen der Österreichischen Mineralogischen Gesellschaft* **149**, 125–44.
- GRACIANSKY DE, P. C. 1972. Le bassin tertiaire de Barrême (Alpes de Haute-Provence): relations entre déformation et sédimentation; chronologie des plissements. *Comptes Rendus de l'Académie des Sciences, Paris (D)* **275**, 2825–8.
- GRACIANSKY DE, P. C. 1982. *Notice Explicative de la Feuille Digne à 1/50 000*. Orléans: BRGM (Bureau des Recherches Géologiques et Minières).
- GRACIANSKY DE, P. C., LEMOINE, M. & SALIOT, P. 1971. Remarques sur la présence de minéraux et de paragenèses du métamorphisme alpin dans les galets des conglomérats oligocènes du synclinal de Barrême (Alpes de Haute-Provence). *Comptes Rendus de l'Académie des Sciences, Paris (D)* **272**, 3243–45.
- GRATIER, J. P., MÉNARD, G. & ARPIN, R. 1989. Strain-displacement compatibility and restoration of the Chaînes Subalpine of the western Alps. In *Alpine Tectonics* (M. P. Coward, D. Dietrich & R. G. Parks), pp. 65–81. Geological Society of London, Special Publication no. 45.
- GROPPO, C. & COMPAGNONI, R. 2007. Metamorphic veins from the serpentinites of the Piemonte Zone, western Alps, Italy: a review. *Periodico di Mineralogia* **76**, 127–53.
- GROPPO, C., RINAUDO, C., CAIRO, S., GASTALDI, D. & COMPAGNONI, R. 2006. Micro-Raman spectroscopy for quick and reliable identification of serpentinite minerals from ultramafics. *European Journal of Mineralogy* **18**, 319–29.
- GUILLOT, S., HATTORI, K., AGARD, P., SCHWARTZ, S. & VIDAL, O. 2009. Exhumation processes in oceanic and continental subduction contexts: a review. In *Subduction Zone Dynamics* (eds S. Lallemand & F. Funicello), pp. 175–204. Berlin, Heidelberg: Springer-Verlag.
- GUILLOT, S., HATTORI, K. H. & DE SIGOYER, J. 2000. Mantle wedge serpentinitization and exhumation of eclogites: insights from eastern Ladakh, northwest Himalaya. *Geology* **28**, 199–202.
- JOSEPH, P. & LOMAS, S. A. 2004. Deep-water sedimentation in the Alpine Foreland Basin of SE France: new perspectives on the Grès d'Annot and related systems – an introduction. In *Deep-water Sedimentation in the Alpine basin of SE France: New perspectives on the Grès d'Annot and related systems* (eds P. Joseph & S. A. Lomas), pp. 1–16. Geological Society of London, Special Publication no. 221.
- JOURDAN, S., BERNET, M., TRICART, P., GUILLOT, S., SCHWARTZ, S. & DUMONT, T. 2011. New constraints on the Western Alpine wedge 30–20 My ago from multi-method provenance analysis of foreland basin deposits. *Geophysical Research Abstracts* **13**, EGU2011–9367.
- KERCKHOVE, C. 1969. La “zone du Flysch” dans les nappes d'Embrunais-Ubaye. *Géologie Alpine* **45**, 5–204.
- LARDEAUX, J. M., SCHWARTZ, S., TRICART, P., PAUL, A., GUILLOT, S., BETHOUX, N. & MASSON, F. 2006. A crustal-scale cross-section of the south-western Alps combining geophysical and geological imagery. *Terra Nova* **18**, 412–22.
- LOMBARDO, B., NERVO, R., COMPAGNONI, R., MESSIGA, B., KIENAST, J. R., MÉVEL, C., FIORA, L., PICCARDO, G. B. & LANZA, R. 1978. Osservazioni preliminari sulle ofiolite metamorfiche del Monviso (Alpi Occidentali). *Rendiconti Società Italiana di Mineralogia e Petrologia* **34**, 253–305.
- MALUSÀ, M., POLINO, R. & MARTIN, S. 2005. The Gran San Bernardo nappe in the Aosta valley (western Alps): a composite stack of distinct continental crust units. *Bulletin de la Société Géologique de France* **176**, 417–31.
- MALUSÀ, M., POLINO, R. & ZATTIN, M. 2009. Strain partitioning in the axial NW Alps since the Oligocene. *Tectonics* **28**, 1–26.
- MALUSÀ, M., POLINO, R., ZATTIN, M., BIGAZZI, G., MARTIN, S. & PIANA, F. 2005. Miocene to Present differential exhumation in the Western Alps: insights from fission track thermochronology. *Tectonics* **24**, TC2005, doi:10.1029/2004TC001782.
- MCBRIDE, E. F. & PICARD, M. D. 1987. Downstream changes in sand compaction and roundness in a short-headed, high-gradient stream, Liguria, Italy. *Journal of Sedimentary Petrology* **57**, 1018–26.
- MORAG, N., AVIGAD, D., HARLAVAN, Y., MCWILLIAMS, O. & MICHARD, A. 2008. Rapid exhumation and mountain building in the Western Alps: petrology and 40Ar/39Ar geochronology of detritus from Tertiary basins of southeastern France. *Tectonics* **27**, TC2004, doi:10.1029/2007TC002142.
- NAJMAN, Y. & GARZANTI, E. 2000. An integrated approach to provenance studies: reconstructing early Himalayan palaeogeography and tectonic evolution from Tertiary foredeep sediments, N. India. *Geological Society of America Bulletin* **112**, 435–49.
- PHILIPPOT, P. 1990. Opposite vergence of nappes and crustal extension in the French-Italian Western Alps. *Tectonics* **9**, 1143–64.
- PLATT, J. P. 1986. Dynamic of orogenic wedges and the uplift of high-pressure metamorphic rocks. *Geological Society of America Bulletin* **97**, 1037–53.
- PLATT, J. P. 1987. The uplift of high-pressure low temperature metamorphic rocks. *Philosophical Transactions of the Royal Society of London* **A321**, 87–103.
- PLATT, J. P. 1993. Exhumation of high-pressure rocks – a review of concepts and processes. *Terra Nova* **5**, 119–33.
- PLATT, J. P., BEHRMANN, J. H., CUNNINGHAM, P. C., DEWEY, J. F., HELMAN, M., PARISH, M., SHEPLEY, M. G., WALLIS, S. & WESTON, P. G. 1989. Kinematics of the Alpine arc and the motion history of Adria. *Nature* **337**, 158–61.

- POLINO, R., RUFFINI, R. & RICCI, B. 1991. Le molasse terziarie della collina di Torino: relazioni con la cinematica alpina. *Atti Ticinensi Scienze della Terra* **34**, 85–95.
- RINAUDO, C., GASTALDI, D. & BELLUSO, E. 2003. Characterization of chrysotile, antigorite, and lizardite by FT-Raman spectroscopy. *Canadian Journal of Mineralogy* **41**, 883–90.
- ROLLAND, Y., LARDEAUX, J. M., GUILLOT, S. & NICOLLET, C. 2000. Syn-convergence extension, vertical pinching and contrasted metamorphic units on the western edge of the Gran Paradise massif (French-Italian Alps). *Geodinamica Acta* **13**, 133–48.
- ROSENBAUM, G. & LISTER, G. S. 2005. The western Alps from the Jurassic to Oligocene: spatio-temporal constraints and evolutionary reconstructions. *Earth Science Reviews* **69**, 281–306.
- RUBATTO, D. & HERMANN, J. 2001. Exhumation as fast as subduction? *Geology* **29**, 3–6.
- SCAMBELLURI, M., MUNTENER, O., HERMANN, J., PICCARDO, G. B. & TROMMSDORFF, V. 1995. Subduction of water into the mantle – history of an alpine peridotite. *Geology* **23**, 459–62.
- SCHMID, S. M. & KISSLING, E. 2000. The arc of the western Alps in the light of geophysical data on deep crustal structure. *Tectonics* **19**, 62–85.
- SCHWARTZ, S., ALLEMAND, P. & GUILLOT, S. 2001. Numerical model of the effect of serpentinites on the exhumation of eclogitic rocks: insights from the Monviso ophiolitic massif (Western Alps). *Tectonophysics* **342**, 193–206.
- SCHWARTZ, S., LARDEAUX, J. M., GUILLOT, S. & TRICART, P. 2000. Diversité du métamorphisme éclogitique dans le massif ophiolitique du Monviso (Alpes occidentales, Italie). *Geodynamica Acta* **13**, 169–88.
- SCHWARTZ, S., LARDEAUX, J. M., TRICART, P., GUILLOT, S. & LABRIN, E. 2007. Diachronous exhumation of HP-LT metamorphic rocks from south-western Alps: evidence from fission-track analysis. *Terra Nova* **19**, 133–40.
- SCHWARTZ, S., TRICART, P., LARDEAUX, J. M., GUILLOT, S. & VIDAL, O. 2009. Late tectonic and metamorphic evolution of the Piedmont accretionary wedge (Queyras Schistes lustrés, western Alps): evidences for tilting during Alpine collision. *Geological Society of America Bulletin* **121**, 502–18.
- SÉRRANE, M. 1999. The Gulf of Lion continental margin (NW Mediterranean) revisited by IBS: an overview. In *The Mediterranean Basins: Tertiary Extension within the Alpine Orogen* (eds B. Durand & L. Jolivet), pp. 15–36. Geological Society of London, Special Publication no. 156.
- SINCLAIR, H. D. 1997. Tectonostratigraphic model for under-filled peripheral foreland basins: an Alpine perspective. *Geological Society of America Bulletin* **109**, 324–46.
- SINCLAIR, H. D. 2000. Delta-fed turbidites infilling topographically complex basins: a new depositional model for the Annots Sandstones. *Journal of Sedimentary Research* **70**, 504–19.
- SISSINGH, W. 2001. Tectonostratigraphy of the West Alpine Foreland: correlation of Tertiary sedimentary sequences, changes in eustatic sea-level and stress regimes. *Tectonophysics* **333**, 361–400.
- SPEAR, F. S. 1993. *Metamorphic Phase Equilibria and Pressure-Temperature-Time Paths*. Washington, DC: Mineralogical Society of America, 799 pp.
- SUE, C. & TRICART, P. 2003. Neogene to ongoing normal faulting in the inner western Alps. *Tectonics* **22**, doi:10.1029/2002TC001426.
- THOMAS, J. C., CLAUDEL, M. E., COLLOMBET, M., TRICART, P., CHAUVIN, A. & DUMONT, T. 1999. First paleomagnetic data from the sedimentary cover of the French Penninic Alps: evidence for Tertiary counterclockwise rotations in the Western Alps. *Earth and Planetary Science Letters* **171**, 561–74.
- TRICART, P. 1984. From passive margin to continental collision: a tectonic scenario for the Western Alps. *American Journal of Science* **284**, 97–120.
- TRICART, P., LARDEAUX, J.-M., SCHWARTZ, S. & SUE, C. 2006. The late extension in the inner western Alps: a synthesis along the south-Pelvoux transect. *Bulletin de la Société Géologique de France* **177**, 299–310.
- TRICART, P. & LEMOINE, M. 1986. From faulted blocks to megamullions and megaboudins-Tethyan heritage in the structure of the western Alps. *Tectonics* **5**, 95–118.
- TRICART, P. & SCHWARTZ, S. 2006. A north-south section across the Queyras Schistes lustrés (Piemont zone, Western Alps): syn-collision refolding of a subduction wedge. *Eclogae Geologicae Helvetiae* **99**, 429–42.
- TRICART, P., SCHWARTZ, S., SUE, C. & LARDEAUX, J. M. 2004. Evidence of synextension tilting and doming during final exhumation from analysis of multistage faults (Queyras Schistes lustrés, Western Alps). *Journal of Structural Geology* **26**, 1633–45.
- ULMER, P. & TROMMSDORFF, V. 1995. Serpentine stability to mantle depths and subduction related magmatism. *Science* **268**, 858–61.
- VIGNAROLI, G., FACCENNA, C., JOLIVET, L., PIROMALLO, C. & ROSSETTI, F. 2008. Subduction polarity reversal at the junction between the Western Alps and the Northern Apennines, Italy. *Tectonophysics* **450**, 34–50.
- WICKS, F. J. & O'HANLEY, D. S. 1988. Serpentine minerals: structures and petrology. In *Hydrous Phyllosilicates* (ed. S. W. Bailey), pp. 91–167. Washington, DC: Mineralogical Society of America.
- WUNDER, B. & SCHREYER, W. 1997. Antigorite: high pressure stability in the system MgO-SiO₂-H₂O (MSH). *Lithos* **41**, 213–27.
- YAMATO, P., AGARD, P., BUROV, E., LE POURHIET, L., JOLIVET, L. & TIBERI, C. 2007. Burial and exhumation in a subduction wedge: mutual constraints from thermomechanical modeling and natural P-T-t data (Schistes Lustrés, western Alps). *Journal of Geophysical Research–Solid Earth* **112**, B07410, doi:10.1029/2006JB004441.