


RESEARCH ARTICLE

A live yeast supplementation to gestating ewes improves bioactive molecule composition in colostrum with no impact on its bacterial composition and beneficially affects immune status of the offspring

Lysiane Dunière^{1,2*} , Justin B. Renaud³, Michael A. Steele⁴, Caroline S. Achard^{1,5}, Evelyne Forano² and Frédérique Chaucheyras-Durand^{1,2}

¹Lallemand SAS, 19 rue des Briquetiers, BP 59, 31702 Blagnac cedex, France

²Université Clermont Auvergne, INRAE, UMR 454 MEDIS, 63122 Saint-Genès Champanelle, France

³London Research and Development Center, Agriculture and Agri-Food Canada, London, ON N5 V 4T3, Canada

⁴Department of Animal Biosciences, University of Guelph, Guelph, ON N1G 2W1, Canada

⁵GenPhySE, Université de Toulouse, INRAE, INPT, ENVT, F-31320 Castanet Tolosan, France

(Received 3 September 2021 – Final revision received 14 December 2021 – Accepted 5 January 2022)

Journal of Nutritional Science (2022), vol. 11, e5, page 1 of 18

doi:10.1017/jns.2022.3

Abstract

Colostrum quality is of paramount importance in the management of optimal ruminant growth and infectious disease prevention in early life. Live yeast supplementation effect during the last month of gestation was evaluated on ewes' colostrum composition. Two groups of ewes ($n = 14$) carrying twin lambs were constituted and twins were separated into groups (mothered or artificially fed) 12 h after birth. Nutrient, oligosaccharides (OS), IgG and lactoferrin concentrations were measured over 72 h after lambing, and bacterial community was described in colostrum collected at parturition (T0). Immune passive transfer was evaluated through IgG measurement in lamb serum. In both groups, colostrum nutrient, OS concentrations and IgG concentrations in colostrum and lamb serum decreased over time ($P < 0.01$), except for lactose, which slightly increased ($P < 0.001$), and lactoferrin, which remained stable. Bacterial population was stable over time with high relative abundances of Aerococcaceae, Corynebacteriaceae, Moraxellaceae and Staphylococcaceae in T0 colostrum. No effect of supplementation was observed in nutrient and lactoferrin concentrations. In supplemented ewes, the level of colostrum IgG was higher at T0 and a higher level of serum IgG was observed in lambs born from supplemented mothers and artificially fed, while no effect of supplementation was observed in the mothered lamb groups. Using a metabolomic approach, we showed that supplementation affected OS composition with significantly higher levels of colostrum Neu-5Gc compounds up to 5 h after birth. No effect of supplementation was observed on bacterial composition. Our data suggest that live yeast supplementation offsets the negative impact of early separation and incomplete colostrum feeding in neonate lambs.

Keywords: Colostrum: Gestating ewes: Immunity: Live yeast probiotic: Oligosaccharides

Introduction

In ruminant industries (dairy and meat production), major economic losses occur due to diseases in the first 3 weeks of age⁽¹⁾. At birth, ruminants are hypoglycaemic and agammaglobulinaemic, and adequate colostrum intake is crucial for

survival and control of infectious diseases in the newborn⁽²⁾. Colostrum is the first source of nutrition in neonate ruminants, providing essential components, such as energy and nutrients, and also hormones and growth factors. The high levels of fat and proteins observed in colostrum lead to better glucose

Abbreviations: 3'-ASL: 3'-acetyl-sialyllactose; 3'-ASLN: 3'-acetyl-sialyllactosamine; OS: oligosaccharides; Ig: immunoglobulin; IPT: Immune Passive Transfer; FPT: failure of passive transfer; GIT: gastrointestinal tract; C: Control; SC: Supplemented; Art: Artificially fed group; Mot: Mothered group; AGC: automatic gain control; IT: injection time; OTUs: Operational Taxonomic Units; UDP: uridine-diphosphate; CMP: cytosine-monophosphate

* **Corresponding author:** Lysiane Dunière, email lduniere@lallemand.com



regulation in colostrum-fed ruminants (*v.* formula-fed animals) and improve their growth in early life⁽³⁾. Furthermore, colostrum ingestion is of paramount importance for the neonate as it promotes immunoglobulin (Ig) transfer from the dam to the newborn (known as immune passive transfer, IPT) and provides protection against infections⁽⁴⁾. Inadequate absorption of colostrum Igs through the gut is known as failure of passive transfer (FPT) and is characterised by a serum IgG level lower than 10 g/l⁽⁵⁾. FPT in neonatal lambs has been shown to increase neonatal mortality, with associated economical losses^(6–8). Beside Igs, colostrum contains many other molecules involved in immunity such as lactoferrin, mucin, α -lactalbumin or serum amyloid A⁽⁴⁾. Colostrum also contains leucocytes in variable concentrations^(9,10) and high levels of oligosaccharides (OS) compared to milk. OS are considered prebiotics, i.e. highly branched sugars not digested directly by the host but by its gut microbiota. Due to its composition, colostrum ingestion immediately after birth may shape the initial digestive microbial colonisation and supports gastrointestinal tract (GIT) maturation. Indeed, over the 12 first hours of life, a higher abundance of total bacteria was observed in the small intestine and colon of neonate calves, with an increase in *Bifidobacterium* genus and butyrate producers in the colon (*Clostridium* cluster XIVa) and a decrease in *Escherichia coli* abundance^(11,12). OS have been shown to promote *Bifidobacterium* growth⁽¹³⁾. Sialylated OSs are able to adhere to the intestinal epithelial cells⁽¹⁴⁾ and increase mucosa-associated *Bifidobacterium* in the distal jejunum and colon of colostrum fed calves^(12,15). Moreover, colostrum OS have a role in host defence by pathogen-binding⁽¹⁶⁾. Colostrum ingestion also increases GIT development by increasing cell renewal and villus development and enhancing metabolic changes to accelerate GIT maturation⁽¹⁷⁾. Elevated levels of growth hormone, insulin, insulin growth factor and cholesterol in colostrum are involved in somatotrophic axis development in the young ruminant⁽¹⁸⁾. The sources of microbial inoculation of the ruminant neonate GIT are still under study,^(19,20) but as colostrum is the first source of energy ingested, its microbiota will be one of the first contacts of foreign elements for the neonate's digestive tract since its birth. Few studies have depicted the microbial composition of ruminant colostrum, and those that have mainly focused on bovine colostrum, leaving information lacking in ovines.

In sheep production, artificial rearing is a common practice for prolific breeds in which supernumerary lambs are separated from their mother at very early age (0–2 d after birth) and fed milk replacer. This practice presents several detrimental short- and long-term effects for the young animals⁽²¹⁾, and strategies are currently being studied in order to reduce the impact of mother separation on the lamb's immunity, growth and performance and microbial digestive establishment^(22,23). Live yeast-based feed additives have been shown to enhance the stabilisation of rumen microbiota during challenging periods^(24,25). Peripartum modifications of rumen microbiota composition with an increase in milk production have been observed in dairy cows supplemented with the same live yeast used in this study⁽²⁶⁾. Moreover, the supplemented animals presented differential expression of genes involved in

pro- and anti-inflammatory processes along the digestive tract around calving, suggesting an improvement in rumen epithelial barrier associated with supplementation⁽²⁷⁾. An increased inflammatory status would be detrimental for the animal, as part of the metabolisable energy will be directed towards immune reactions instead of fetus development, maintenance of body condition score and the physiological changes required for lactation onset. Colostrum quality is impacted by the health condition of the gestating animal^(28–30). Probiotic supplementation peripartum could thus be a nutritional strategy to reinforce rumen functions through the stabilisation of microbial populations, leading to an enhancement of the dam's health before parturition^(26,27,31).

In this study, we hypothesised that live yeast *Saccharomyces cerevisiae* supplementation of ewes during the last month of gestation will improve colostrum nutritional and immune qualities impacting the IPT to their lambs afterwards and also modify colostrum microbiota. More precisely, we investigated differences in colostrum nutrients, lactoferrin and IgG concentrations. OS compositions were depicted through highly specific LC–MS techniques, and the bacterial population was described through qPCR and 16S rDNA sequencing approaches.

Materials and methods

Diets and animals

The animal trial was conducted at the animal facilities of INRAE Herbipôle Experimental Unit UE1414 (Clermont Auvergne Rhône Alpes). Procedures on animals were carried out in accordance with the guidelines for animal research of the French Ministry of Agriculture and all other applicable national and European guidelines and regulations for experimentation with animals (see http://www2.vet-lyon.fr/ens/expa/acc_regl.html for details). The protocol was approved by the Regional Ethics Committee for Animal Experimentation C2EA-02 and authorised by the French Research Ministry with the reference number 14981-2018050417167566V3.

Twenty-eight gestating ewes (*Ovis aries*, Romane breed) were used for this study. All of them were checked in mid-gestation by echographic evaluation to carry two fetuses. They were assigned to two groups (*Control* = C, *Supplemented* = SC) that were balanced homogeneously according to age, parity, body condition score and live weight.

One month and a half before the estimated date of parturition, ewes were transferred from the farm unit to a room equipped with Biocontrol CFRI systems (www.BioControl.no), which allowed to control individual concentrate intake. Ewes were identified by means of ear RFID (radio-frequency identification) transponders for specific access to the manger. As the yeast supplement was incorporated into the experimental concentrate, it was important to ensure that each animal had the same quantity of concentrate ingested and at the same time of the day. Ewes were progressively adapted to the concentrate during the month before the start of the trial by increasing the amount of concentrate fed daily up to 800 g /d/animal. Then, until parturition, each ewe received



this fixed amount of concentrate (Moulin de Massagettes, Massagettes, France, Supplementary Table S1) daily, distributed once at 20.00 hours and followed by 2 kg of meadow hay (Supplementary Table S2). Good quality water was offered *ad libitum*.

After 2 weeks of adaptation to the BioControl system and to this diet, the two groups received their allocated experimental concentrate, the only difference being the incorporation of the live yeast product – *S. cerevisiae* CNCM I-1077 (Levucell SC TITAN, Lallemand SAS, Blagnac, France) – for the SC group. The rate of inclusion in the concentrate was calculated to bring 8×10^9 CFU/d/individual. A few days before their estimated date of parturition, ewes were transferred to a maternity unit that was split into two large pens separated by a concrete wall, to ensure that no contact could occur between the groups. Bedding was made of straw. Animals were then kept in these pens until the end of the experiment.

After parturition, the concentrate was not supplemented anymore with live yeast product. Thus, live yeast supplementation to the SC group occurred only during the end of the gestation phase and was stopped at parturition. The composition of the postpartum diet was modified to meet the requirements of the dam in order to feed only one lamb (the other one was directed to an artificial milk feeding system). So, each ewe was fed with 600 g of concentrate and 3 kg of meadow hay, covering slightly more than 135 % of its energy needs.

At birth, twin lambs were kept with their mother in an individual birth pen for about 12 h to ensure a first colostrum uptake. During this period, the lambs were weighed and ear tagged. Animal care was performed if necessary, and lambs were trained to reach the teats. Then, one of the twins was separated from the dam, entered into the Artificially fed group (**Art-**) and was moved in another pen, whereas the other twin was kept with the dam (Mothered group, **Mot-**). The lambs were chosen on the basis of their birth weight and sex to constitute homogeneous groups. Thus, four groups of lambs were constituted, namely Cont-Art, Suppl-Art, Cont-Mot and Suppl-Mot lambs from the four groups considered in this study for blood sampling. Artificially fed lambs were fed with milk replacer (Agnodor, Bonilait Protéines, France). They had been bottle fed for the first few hours/days and as soon as they were comfortable and autonomous, they were fed with a milk bucket equipped with teats, then an automatic milk replacer feeder was put in place to offer milk *ad libitum*. The same concentrate given to the ewes was offered from the second week, along with good quality hay and good quality water, but was very weakly consumed during the first days. However, as the bedding was made of straw, lambs could also have access to fibre through this bedding area. Weaning occurred when the lambs reached about 14 kg and around 6–7 weeks of age as it is usually done at the experimental farm, following the recommendations of national ovine breeding associations^(32,33).

Sample collection

Colostrum sampling from ewes. Samples were taken manually and collected at lambing (T0), 5, 12, 24 and 72 h

after lambing without oxytocin injection. The samples were collected from the two teats with gloves and with prior cleaning of the teats with a clean tissue immersed in hot water. A camera was installed in each experimental room to monitor potential night lambing and further calculate the time when colostrum would be sampled. Samples were aliquoted in several Eppendorf sterile microtubes and rapidly frozen at -20°C for further analyses. Due to physiological variations in lambing time and colostrum yield, the quantity collected varied greatly among animals and time and some ewes could not be sampled at each time points. The final number of colostrum samples was twelve samples at T0h (C = 6, SC = 6), twenty-one samples at T5h (C = 10, SC = 11), twenty-four samples at T12h (C = 11, SC = 13), twenty-four samples at T24h (C = 13, SC = 11) and twenty-six samples at time T72h (C = 13, SC = 13).

Blood sampling from lambs. Blood samples were collected from all lambs at days 2, 7, 28 and 55 of age through the jugular vein in dry collection tubes (Becton Dickinson, Franklin Lakes, NJ, USA) by a qualified technician. Dry tubes were set for clotting for at least 1 h at room temperature and centrifuged at 4500 rpm for 20 min at 4°C , and serum supernatants were stored at -80°C until further analysis.

Sample analyses

Biochemical analyses. Nutrient composition of colostrum was determined from samples diluted 1/10, 1/100 or 1/1000 in PBS $1\times$ as follows: lactose content was measured from 200 μl of diluted samples with the Lactose/D-Galactose (Rapid) Assay Kit (Megazyme, Wicklow, Ireland) according to the manufacturer's instructions; the protein content was measured from 100 μl of diluted samples with the Pierce™ BCA Protein Assay Kit (ThermoFisher, Rockford, IL, USA) and lipid content was analysed by hydrolysis according to an internal method adapted from NF ISO 6492 by the Artemis Laboratory (Janzé, France) from 1 ml of frozen raw colostrum.

Bioactive molecules were analysed as follows: lactoferrin concentration was measured from 50 μl of diluted samples through the Sheep Lactoferrin (LF) ELISA Kit (Mybiosource, San Diego, CA, USA) according to the manufacturer's recommendation; the IgG concentration was analysed by radial immunodiffusion by CIAL Sud Ouest laboratory (Auch, France) from 1 ml of raw colostrum and 1 ml of a lamb blood sample. For biochemical analyses, no technical replicate was performed due to volume limitation, but all biological replicates were analysed (i.e. from six to fourteen animals per group).

High-resolution LC–MS colostrum analysis. All LC–MS data were acquired with a Thermo Q-Exactive Orbitrap® mass spectrometer coupled to an Agilent 1290 HPLC system. Analytes were resolved by hydrophilic liquid interaction chromatography (HILIC) with a 350 $\mu\text{l}/\text{min}$ flow rate. Two



microliters of the sample was injected onto a PEEK-lined Agilent HILIC-Z (2.1 × 100 mm, 2.7 μm; Agilent) column maintained at 35°C. Compounds were resolved with mobile phases of 10 mM ammonium formate + 0.1 % formic acid in water (A) and 10 mM ammonium formate + 0.1 % formic acid in 90 % acetonitrile (B) operating with the following gradient: 0 min, 90 % B; 1.0 min, 90 % B; 5.0 min, 62 % B; 5.5 min, 30 % B; 10.5 min, 30 % B, 11.0 min 90 % B and 15.5 min, 90 % B. A sample of 100 μl of each raw colostrum sample was diluted with 400 μl of ddH₂O. These samples were extracted using the method developed by Fischer *et al.*⁽¹⁵⁾. A 5 μl spike of the internal standard (IS: β1-3-gal-N-acetyl-galactosaminyl-β1-4-gal β1-4-Glc; GalNAc, 1000 μg/ml) was added to the diluted colostrum sample for a final IS concentration of 9.9 μg/ml. Finally, a 100 μl aliquot was diluted with 100 μl acetonitrile (0.2 % FA, 20 mM ammonium formate) and placed in a 250 μl polypropylene HPLC vial prior to LC–MS analysis. The following conditions were used for heated electrospray ionization (HESI): capillary voltage 5 kV; capillary temperature, 330°C; sheath gas, 32 arbitrary units; auxiliary gas, 10 units; probe heater temperature, 280°C and S-Lens RF level, 50 %.

Non-targeted chemical analysis. Non-targeted analysis was performed on a subset of samples: twelve samples at T0h (C = 6, SC = 6), twenty-one samples at T5h (C = 10, SC = 11) and nine samples at T72h (C = 3, SC = 6). Samples were analysed in both positive and negative ionisation modes at 140 000 resolution, automatic gain control (AGC) of 3 × 10⁶, maximum injection time (IT) of 512 ms and mass range of 150–1250 *m/z*. Ten microliters of all samples were combined as a pooled QC composite sample that was analysed at the beginning and end of the LC-MS analysis to verify a minimal instrumental drift. Composite samples were also analysed by a top eight data-dependent acquisition for compound identification consisting of a 35 000 resolution, 3 × 10⁶ AGC, 128 ms max IT followed by MS/MS at 17 500 resolution, 1 × 10⁵ AGC, 64 ms, 1.2 *m/z* isolation window and 25,35 stepped collision energy. Thermo.raw files were converted to .mzml format using Proteowizard⁽³⁴⁾ with peaking filter applied. Features were detected using the XCMS package⁽³⁵⁾ with the centWave method (ppm tolerance 1.0⁽³⁶⁾). The signal-to-noise threshold was set to 5, noise was set to 1 × 10⁶ and pre-filter was set to six scans with a minimum 5000 intensity. Retention time correction was conducted using the obiwarp method⁽³⁷⁾. Grouping of features was set to those present in at least 25 % of all samples (retention time deviation 10 s; *m/z* width 0.015). The ‘fillPeaks’ function with default settings. Remaining zeros values were imputed with two thirds the minimum value on a per mass basis. Compounds were identified by accurate mass, comparison of retention times to authentic standards or by accurate mass and also comparison of fragmentation patterns to MS/MS databases⁽³⁸⁾.

Quantification of sialyl OS. Eight analytes (Fig. 5 and Supplementary Table S3) were quantified within all samples by single-stage, high-resolution mass spectrometry based on their accurate mass (±3 ppm). The target analytes were monitored

in a negative ionisation mode by two SIM scans between mass ranges of *m/z* 625–710 and 915–940. Both SIM scans were performed at a resolution of 17 500 resolution, an AGC of 3 × 10⁶ and a maximum IT of 64 ms. The LC method was modified for these target analytes as follows: mobile phase B was held at 90 % for 1.0 min, before decreasing to 62 % over 4 min followed by a decrease to 30 % over 0.5 min. Mobile phase B was held at 30 % for 4 min, before returning to 90 % B over 0.5 min and equilibrated for 2 min. Given their high structural similarity and retention times, the *N*-acetylneuramic (Neu5Ac)-containing compounds were used as surrogate standards for the quantification of the corresponding *N*-glycoylneuraminic (Neu5Gc)-containing analytes. The recovery efficiency (*R_c*%) for GalHNAc, 3'-acetyl-sialyllactose (3'-ASL), 6'-ASL, 3'-acetyl-sialyllactosamine (3'-ASLN) and 6'-ASLN was calculated by fortifying 100 μl composite colostrum samples with each analyte before extraction (pre-spike) and fortifying a second set after extraction. The signal suppression/enhancement (SSE%) was calculated by the signal ratio of composite colostrum samples fortified after extraction with a fortified water sample. For targeted analysis, all collected samples from T0h to T72h were processed and analysed in duplicate.

Colostrum microbiota analysis. DNA was extracted from at least 250 mg of raw colostrum using the Quick DNA Fecal/Soil Microbe kit (Zymo Research, Irvine, CA, USA). DNA yield and quality were determined after Nanodrop 1000 and Qubit spectrophotometric quantifications. DNA extracts were stored at –20°C until analysis. An average DNA of 20.83 ± 73.34 ng/μl was extracted from raw colostrum samples (dsDNA, Qubit quantification), except for one sample from the SC group whose quality was not sufficient for further analysis, and which was thus discarded from bacterial analyses.

The total bacteria population was quantified using the qPCR method, with a specific primer set and PCR conditions targeting a ribosomal RNA gene according to Bayat *et al.*⁽³⁹⁾. The absolute abundance of total bacteria was expressed as the number of gene copies per microgram of colostrum. The standard curves (from 10² to 10⁹ copies of bacterial 16S rDNA) were prepared by serial dilutions according to Mosoni *et al.*⁽⁴⁰⁾ The efficiency of the qPCR for each target varied between 97 and 102 % with a regression coefficient of above 0.95.

Microbial diversity and composition of colostrum were studied in T0 samples (i.e. six ewes per treatment group) using 16S rDNA amplicon sequencing. The hypervariable V3–V4 regions of the 16S rRNA gene were targeted for sequencing (466 bp; 341 F 5'- CCTAYGGGRBGCASCAG-3'; 806R 5'- GGACTACNNGGGTATCTAAT-3'). High-throughput sequencing was performed on a Illumina MiSeq sequencer by the GeT-PlaGe core facility (INRAe Transfer, Toulouse, France). The MiSeq Reagent Kit v3 was used according to the manufacturer's instruction (Illumina Inc., San Diego, CA, USA). Bioinformatics analyses were performed using the GenoToul bioinformatics facility (INRAe, Toulouse, France).



Sequences were processed using the FROGS 3.2 pipeline on a Galaxy platform⁽⁴¹⁾. Briefly, sequences were clustered in operational taxonomic units (OTUs) using SWARM algorithm⁽⁴²⁾. Chimeric sequences were detected by samples using UCHIME algorithm⁽⁴³⁾. A total of 464 858 reads were merged and processed, and 437 504 sequences were kept after chimera removal. Singleton OTUs were excluded and the remaining 2311 OTUs were affiliated with the SILVA 138.1 database using BLAST algorithm (97 % sequence identity threshold).

Statistical analysis. The number of animals enrolled in this study was limited by the experimental facility capacity and the criteria retained for animal inclusion in each experimental group. More precisely, ewes had to be gestating with two fetuses and each experimental group was balanced by ewe's body score condition, live weight, age and parity. According to these criteria, fourteen ewes were enrolled in each experimental group. Graphical representations and statistical analyses were performed using GraphPad Prism 9.0.2. The effect of Supplementation (C or SC) and Time factors and their interaction were evaluated using a mixed model with repeated time and multiple comparisons with Sidak's adjustment. Colostrum qPCR data were \log_{10} transformed before statistical analysis. For lamb serum analysis, a linear mixed model with repetitions was applied considering three factors: Time, Supplementation and Rearing mode (Art- or Mot- groups) and their interactions. Multiple comparisons were made according to Tukey's test. For colostrum microbial sequencing data, the Mann–Whitney test was performed on relative abundance of each considered taxa. The statistical significance was determined at a P -value of ≤ 0.05 and trends discussed at P -value of ≤ 0.10 . A significant effect of the Supplementation factor was indicated in figures with $^{\#}P < 0.1$, $*P < 0.05$, $**P < 0.001$ and $***P < 0.0001$. The number of animals per group was chosen according to housing conditions at the experimental farm, workload for trained staff and recommendations of the ethical committee.

Results

Nutrient composition

The nutrient composition of colostrum was studied over the 72 h after lambing (Fig. 1). Fat (a), lactose (b) and protein (c) concentrations varied greatly among individuals, and no statistical differences were observed between Control (C) and Supplemented (SC) groups, but a strong Time effect was observed (Table 1). Fat concentration decreased over time, while a slight increase of lactose concentration was observed with time. A drastic decrease of protein concentration was measured from the first hours after lambing.

Bioactive molecule composition

Lactoferrin concentration in colostrum was quite stable over time (Fig. 2(a), Table 2). Great intra-individual variations were observed among the animals, especially at early time

points. Interestingly, a numerically higher level of lactoferrin (+15.8 %) was quantified in colostrum of supplemented ewes at 24 h (3.79 ± 0.28 and 4.38 ± 0.52 $\mu\text{g}/\text{ml}$ in C and SC groups, respectively) after lambing. IgG was measured over time in colostrum (Fig. 2(b)). A large variation in IgG concentrations was observed among animals during the first 12 h post-partum. Concentrations decreased rapidly to reach low levels after 24 h (from 52.89 ± 31.61 and 79.50 ± 15.24 mg/ml at 0 h to 3.73 ± 2.48 and 4.03 ± 4.24 mg/ml after 72 h for C and SC groups, respectively, $P < 0.001$). There was a tendency for Time \times Supplementation interaction, and the IgG concentrations in the colostrum of supplemented ewes were higher than those of control at T0 ($P = 0.046$, Sidak's multiple comparison test).

IgG concentrations were also measured in the serum of lambs (Fig. 3). Strong significant effects of Time, Supplementation and their interaction were observed, as well as a tendency for the interaction of the three factors considered (Table 3). The serum IgG concentration drastically decreased in all groups during the first three weeks of life from a predicted mean of 28.71 mg/ml at 2 d of age to 7.42 mg/ml after 28 d and remained stable up to 55 d (7.01 mg/ml). Among Artificially fed lambs, a significant higher level of IgG was observed in serum of lambs born from supplemented mothers at day 2 ($P < 0.001$, Tukey's multiple comparison test). Interestingly, no significant difference of IgG concentration was observed among artificially fed lambs from supplemented mothers and lambs kept with their mother whatever the supplementation status.

Metabolomic analysis of colostrum samples

Non-targeted analysis. Colostrum samples from 0, 5 and 72 h post-partum of both groups were analysed in a positive and negative ionisation mode. In a positive mode, the most intense signals corresponded to carnitine, acetyl carnitines as well as lactose and glycerophosphocholine (Fig. 4(a)). In a negative ionisation mode (Fig. 4(b)), the major analytes detected were two isobaric peaks matching the formula of lactose (α - and β - anomers of lactose). Two other major peaks eluting later in the run are uridine-diphosphate (UDP) hexose and UDP-acetylglucosamine, the precursors to lactose and *N*-acetylglucosamine, respectively.

In a positive ionisation mode, 583 features were extracted among which twelve, twenty-one and three features were differentially expressed ($P < 0.01$) at 0, 5 and 72 h post-lambing, respectively (Supplementary Table S4). Of all differentially expressed features, only three, four and one were decreased in the SC group after 0, 5 and 72 h, respectively. In a negative ionisation mode, fewer features were extracted at the same defined noise level. Of the 355 features extracted, only six, seven and four were differentially expressed ($P < 0.01$) at 0, 5, and 72 h post-lambing. A significantly altered feature of formula $\text{C}_{25}\text{H}_{42}\text{N}_2\text{O}_{20}$ was detected in both positive and negative ionisation modes. In a negative ionisation mode, another significantly increased feature has a putative formula of $\text{C}_{23}\text{H}_{39}\text{NO}_{19}$.

The identity of these differentially expressed analytes was characterised by MS/MS using spectra of commercial

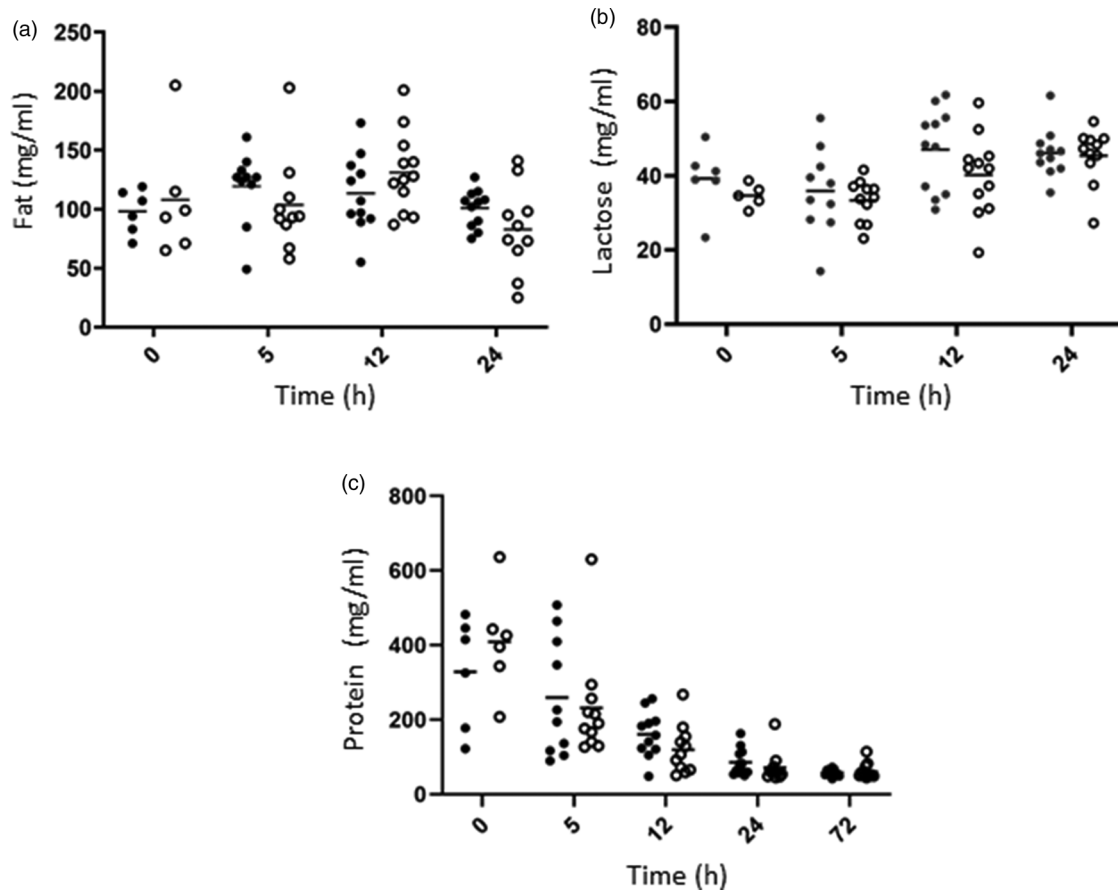


Fig. 1. Evolution of fat (a), lactose (b) and protein (c) concentrations (mg/ml) over time in colostrum samples in C (dark circles) and SC (open circles) ewe groups.

standards of 6'-ASL and 6'-ASLN (Supplementary Fig. S1). The distinct spectra observed indicated that an additional oxygen atom is present on the sialyl residue. These compounds were thus identified as Neu5Gc lactose and Neu5Gc lactosamine. The precursor Neu5Ac OS was also detected in high concentrations in analysed samples (Fig. 5).

Targeted analysis of colostrum samples. The sialyl OS identified by non-targeted analysis were quantified by high-resolution MS over 72 h post-lambing to determine if

supplementation affected their production. A strong and significant Time effect was observed for total sialylated OS (Total), Neu5Ac, Neu5Gc and any of the OS structures observed (3'- and 6'-sialyllactose, disialyllactose and 3'- and 6'-sialyllactosamine, Table 4, Fig. 6). No effect of Supplementation was observed among the Neu5Ac OS identified, while significant Supplementation effect and interaction with Time was observed for 6'-GSL, 6'-GSLN and total Neu5Gc. More precisely, a higher concentration of Neu5Gc was observed in the SC group in the T0 colostrum ($P=0.018$). The concentration of 6'-GSL (Fig. 7(a)) was

Table 1. Mean values \pm SEM and P -values associated with statistical analysis of nutrient composition of colostrum samples with a linear mixed model (bold typing indicate P -values ≤ 0.1)

Nutrients (mg/ml)	Time (h)	Control	SC	P -value		
				Supplementation	Time	S \times T
Fat	0	98.00 \pm 7.63	108.00 \pm 20.80	0.82	0.01	0.15
	5	119.40 \pm 9.82	103.50 \pm 12.79			
	12	113.36 \pm 9.86	131.08 \pm 9.72			
	24	100.82 \pm 4.85	82.70 \pm 11.66			
Lactose	0	392.32 \pm 36.20	346.56 \pm 13.79	0.11	<0.001	0.53
	5	359.23 \pm 36.63	333.62 \pm 16.97			
	12	470.65 \pm 33.62	402.06 \pm 30.71			
	24	641.67 \pm 19.86	454.27 \pm 22.45			
Protein	0	328.00 \pm 60.60	408.91 \pm 57.24	0.91	<0.001	0.39
	5	259.55 \pm 50.30	231.62 \pm 42.93			
	12	160.73 \pm 18.57	119.78 \pm 19.51			
	24	85.88 \pm 10.33	71.58 \pm 12.29			

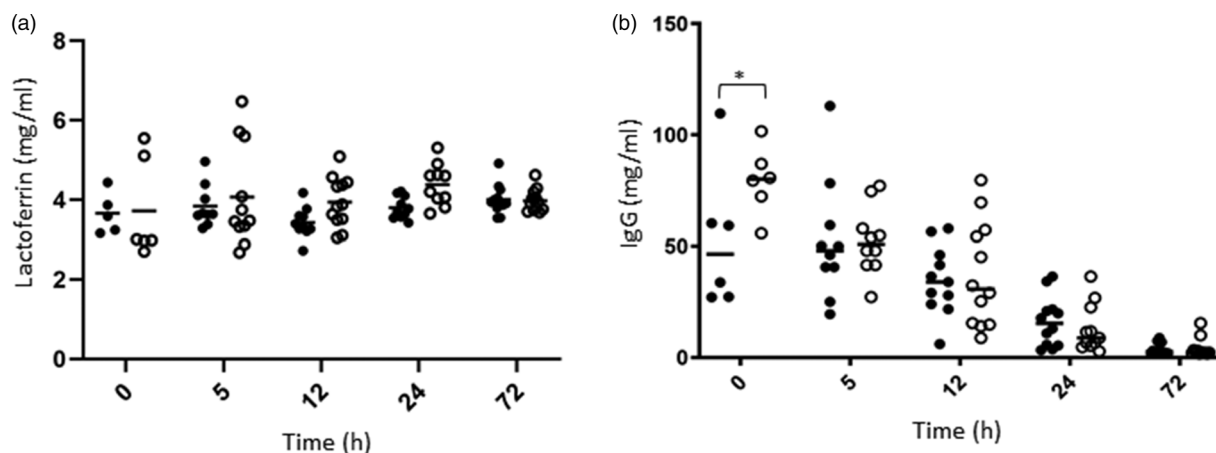


Fig. 2. Lactoferrin (a, mg/ml) and IgG (b, mg/ml) concentrations over time in colostrum samples of C (dark circles) and SC (open circles) groups. Significant effects of Supplementation factor are indicated with a bracket with $*P < 0.05$.

significantly increased as well at T0 (89.91 ± 39.57 and 147.38 ± 62.92 mg/l in C and SC groups, respectively, $P = 0.042$) and also 5 h after lambing (85.39 ± 43.53 and 130.07 ± 53.94 mg/l in C and SC groups, respectively, $P = 0.044$). The concentration of 6'-GSLN in the SC group was about twice that measured in the C group at the same time points (119 ± 40.37 and 248.47 ± 120.09 mg/l in C and SC groups, respectively, $P < 0.001$ at 0 h; 106.26 ± 42.59 and 180.22 ± 70.27 mg/l in C and SC groups, respectively at 5 h; $P = 0.009$, Fig. 7(b)). After 12 h, no differences between the groups were measured.

The biosynthetic pathway for both Neu5Ac OS and Neu5Gc OS has been reconstructed from the non-targeted LC-MS data (Fig. 8). A Neu5Ac residue is loaded onto a cytosine-monophosphate (CMP) molecule, which can transfer the Neu5Ac to the 3' or 6' position of lactose or *N*-acetylglucosamine. Alternatively, CMP-Neu5Ac can be hydroxylated enzymatically to CMP-Neu5Gc. The statistical analysis of the reconstructed Neu5Gc pathway was performed on colostrum samples collected 5 h post-partum, as the statistical significance was the highest at that sampling time. No significant difference was observed between C and SC groups for Neu5Ac, lactose, *N*-acetylglucosamine nor the Neu5Ac OS. CMP-Neu5Ac was also not altered by supplementation. In the SC group, the elevated levels of Neu5Gc-containing

OSs (glycolyl-SLN and glycolyl-SL; $P < 0.01$) concomitant with the decreased levels in CMP-Neu5Gc ($P = 0.03$) suggest an increased activity of sialyltransferase enzymes.

The peak area ratios of CMP-Neu5Gc/CMP-Neu5Ac showed that the concentration of CMP-Neu5Gc was much higher (~20 fold on average, with large individual variations) in both C and SC groups ($P = 0.017$ and $P = 0.002$, respectively, Supplementary Fig. S2), meaning that there is no clear evidence that only specific enzymatic activity of Neu5Gc sialyl transferases was altered.

Bacterial population of colostrum samples. Q-PCR analysis showed that total bacterial population was stable over time and no effect of supplementation was observed, possibly due to very high inter-individual variability (Table 5). Overall, in the C group, the total bacterial population was on average of 1.13×10^6 CFU/g, while a slightly higher concentration was observed in the SC group (average of 1.54×10^6 CFU/g colostrum).

Statistical analysis on alpha diversity indices indicated no effect of supplementation whatever the indexes considered ($P > 0.05$), possibly because of the low number of samples considered. Indeed, higher numerical values of richness (i.e. Observed OTUs and Chao1) and evenness (Shannon index)

Table 2. Mean values \pm SEM and *P*-values associated with statistical analysis of bioactive molecules' concentrations in colostrum samples with a linear mixed model, (bold typing indicate *P*-values ≤ 0.1)

Bioactive molecules (mg/ml)	Time (h)	C	SC	<i>P</i> -values		
				Supplementation	Time	S \times T
Lactoferrine	0	3.66 \pm 0.23	3.72 \pm 0.51	0.14	0.17	0.49
	5	3.84 \pm 0.18	4.07 \pm 0.38			
	12	3.43 \pm 0.12	3.95 \pm 0.18			
	24	3.80 \pm 0.09	4.38 \pm 0.16			
	72	4.01 \pm 0.11	3.98 \pm 0.08			
IgG	0	52.89 \pm 12.90	79.50 \pm 6.22	0.28	<0.001	0.10
	5	52.28 \pm 8.53	52.48 \pm 4.78			
	12	34.68 \pm 4.65	37.16 \pm 6.83			
	24	16.08 \pm 3.24	13.07 \pm 3.26			
	72	3.73 \pm 0.72	4.03 \pm 1.22			

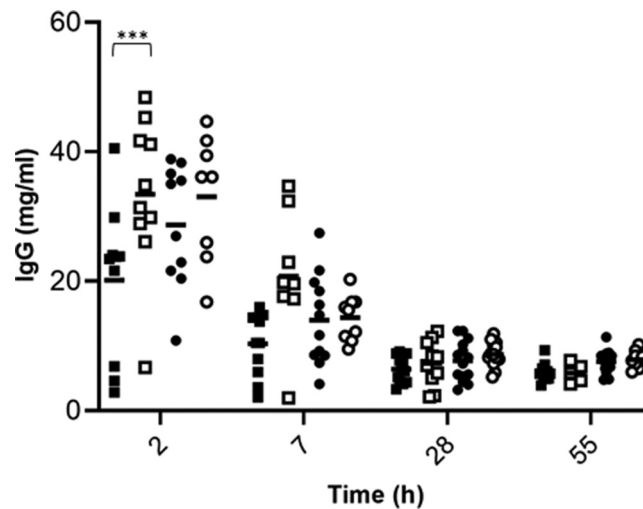


Fig. 3. IgG concentration (mg/ml) over time in serum samples of lambs born from C (dark) or SC (white) ewes and raised with their mother (circles) or artificial fed (squares). Significant effects of Supplementation factor are indicated in the graph with a bracket with *** $P < 0.0001$.

were observed in the C group (Fig. 9). One outlier sample from the C group (C_6) presented lower richness and evenness than the other control samples, while one outlier sample from the SC group (SC_5) presented a higher richness than the rest of SC samples. Based on the visualisation of the beta diversity using Bray-curtis distance and PCoA projection, no clusterisation of the bacterial community structure at the OTU level was identified according to experimental groups (Supplementary Fig. S3). The colostrum sample C_2 from the C group was apart from all the others, both along the first (2.82 %) and the second axes (15.9 %).

The bacterial taxonomic composition of T0-colostrum samples at the Phylum and Family levels is presented in Fig. 10. At the Phylum level (Fig. 10(a)), colostrum samples were dominated by five major phyla with Proteobacteria and Firmicutes being the most abundant in C (36.30 ± 26.4 and 33.57 ± 15.98 %, respectively) and in SC samples (35.93 ± 9.61 and 28.81 ± 9.34 %, respectively). Actinobacteria was the third phylum in terms of relative abundance in both groups (18.36 ± 10.81 and 25.29 ± 8.94 % in C and SC groups, respectively). Numerical differences were observed between groups (C *v.* SC) with a higher level of Proteobacteria and a lower level of Actinobacteria in C samples, but these differences were not statistically significant ($P > 0.05$). The previously identified unique C_2 sample was characterised by the highest abundance of Proteobacteria (72.55 %).

At the Family level (Fig. 10), part of the bacterial diversity was linked to low abundant families (<1 %, representing 14.47 ± 5.54 *v.* 16.72 ± 15.27 % of the total family reads in C and SC groups, respectively). Aerococcaceae (13.31 ± 8.29 *v.* 9.34 ± 7.21 %, mainly represented by *Aerococcus* genus), Corynebacteriaceae (11.28 ± 7.19 *v.* 21.7 ± 9.21 %, dominated by *Corynebacterium* genus) and Moraxellaceae (15.23 ± 21.4 *v.* 8.3 ± 8.15 %, with members belonging mainly to the *Acinetobacter* genus) were the dominant families in C and SC groups, respectively. Interestingly, a higher level of Staphylococcaceae (from the *Staphylococcus* genus mainly) was observed in C samples (8.22 ± 5.73 %) compared to the SC group (5.96 ± 2.58 %). However, none of these observed differences reached the significance level.

Discussion

Colostrum composition dynamics across the first 72 h post-partum

Good colostrum management at birth is recognised as an important parameter to ensure the sanitary status of the neonates, further herd performances and limit economic losses⁽²⁾. Variations in colostrum nutrients, vitamins and minerals have been observed in several ruminant species^(3,44,45). In the current study, the nutritional composition of colostrum changed over time and our results are in line with the literature. In ovines, variations from 0 h-colostrum to milk are characterised by a slight

Table 3. Mean values \pm SEM and *P*-values associated with statistical analysis of IgG concentrations in the serum of lambs artificially fed (ART) kept with their mother (MOT) and born from supplemented mothers (SC) or from control mothers (C) with a linear mixed model, (bold typing indicate *P*-values ≤ 0.1)

Time (d)	MOT_C	MOT_SC	ART_C	ART_SC	<i>P</i> -value						
					T	R	S	T × R	T × S	R × S	T × R × S
2	28.70 \pm 2.55	33.06 \pm 2.61	20.14 \pm 3.19	33.41 \pm 3.21	<0.001	0.28	0.01	0.19	0.00	0.10	0.09
7	14.00 \pm 1.85	14.36 \pm 0.95	10.34 \pm 1.30	20.77 \pm 2.69							
28	7.69 \pm 0.82	8.69 \pm 0.50	6.38 \pm 0.54	7.30 \pm 0.94							
55	7.58 \pm 0.49	7.87 \pm 0.35	5.90 \pm 0.38	5.80 \pm 0.40							

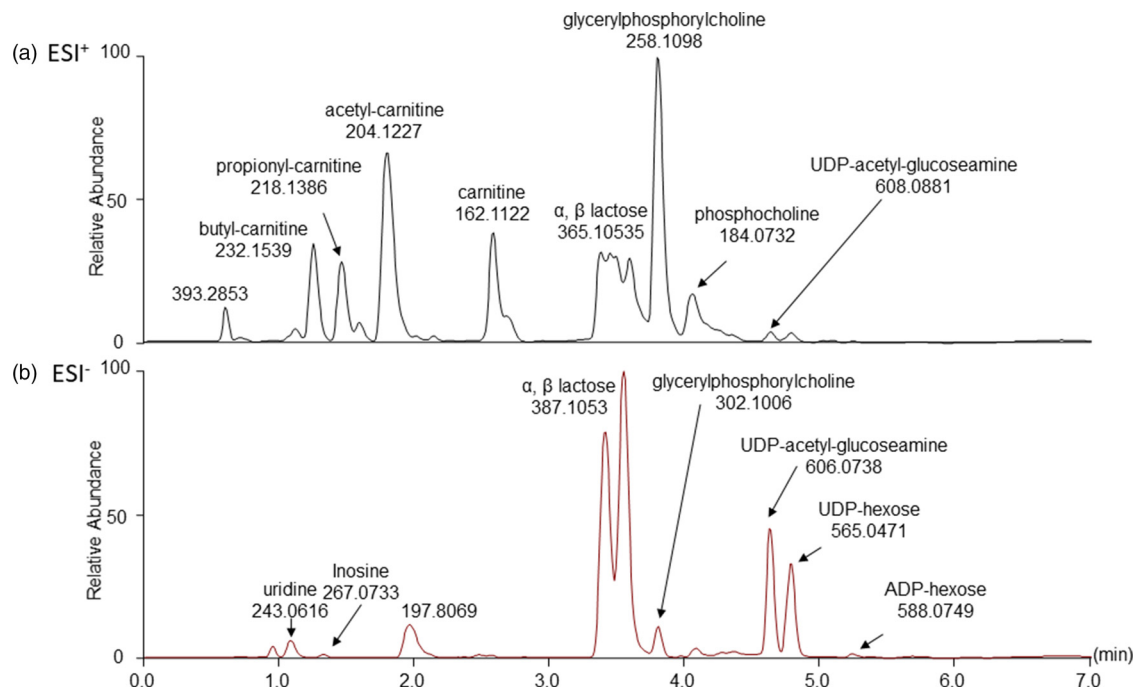


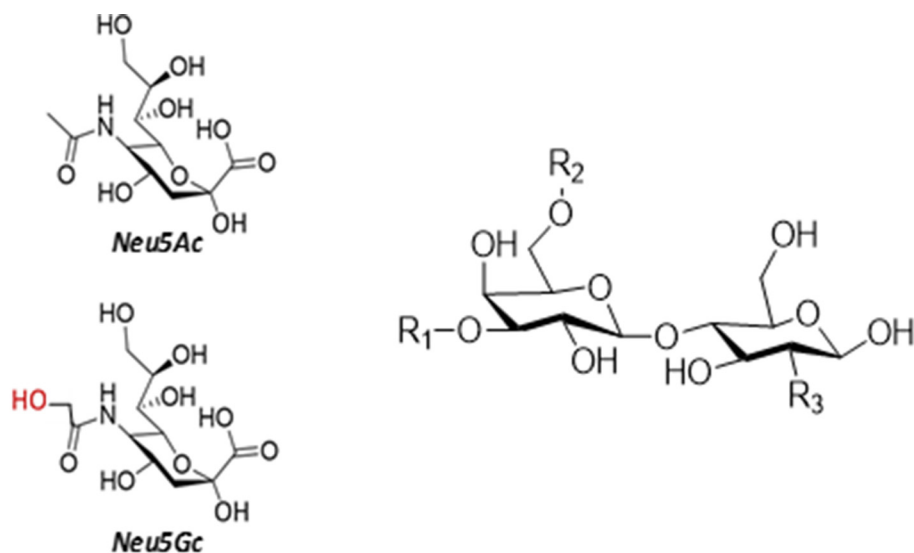
Fig. 4. Colostrum samples analysed in (a) positive and (b) negative ionisation modes.

decrease in fat content (ratio 0 h-colostrum/milk $\sim 1-1.5$), an increase in lactose (ratio ~ 0.8) and a very drastic decrease in protein content (ratio $\sim 2-4$)⁽⁴⁶⁾.

Among the most abundant and studied proteins in colostrum are Igs. The ruminant's placental structure does not allow any transfer of Igs from a dam vascular system to the fetus, thus depriving newborn ruminant of antibodies at birth⁽⁴⁷⁾. Therefore, timely ingestion and absorption of colostrum Igs is critical for the survival of ruminant neonates. Our results showed a drastic decrease of colostrum IgG over time, an observation also seen by others^(46,48,49). The level of IgG in colostrum varies between breeds and ranges from 17.9 to 89.3 mg/ml depending on the ovine breed^(50,51), in line with the highest level of 79.5 mg/ml observed in the Romane ewes monitored in our study. The newborn immune system takes weeks to months to mature and become protective, and thus IPT through the ingestion of IgG from colostrum is of paramount importance. Igs improve animal growth, defences against enteric infection by immunomodulation, mucin protein and/or modification of commensal microbial composition⁽⁵²⁾. Although long-term health parameters were not monitored in this study, the level of Ig in the serum of lambs at birth has been associated with a better survival during the neonatal period⁽⁶⁾, and delaying colostrum feeding within 12 h of life has been shown to decrease the passive transfer of IgG, possibly leaving the calf more vulnerable to infections during the preweaning period⁽⁵³⁾. The authors also observed a delay in bacterial gut colonisation, increasing the risk for pathogen colonisation of the neonate. In our study, the IgG level in lamb's serum drastically decreased with time, with a significant impact of the rearing mode. More precisely, lambs from the Cont-Art group presented 30 % less IgG in their serum after 2 d than C lambs kept with their mothers,

indicating a failure in the immune passive transfer. Lactoferrin is part of the high abundant protein pool mainly produced by the mammary epithelial cells and possesses antibacterial, antifungal, antiviral and antiparasitic activities^(10,54). It is of particular significance against *Staphylococcus aureus*, the most common mastitis-related pathogen in sheep⁽⁵⁵⁾. In young ruminants, lactoferrin significantly reduced mortality and culling rate when administered to preweaned calves⁽⁵⁶⁾ and decreased the number of days of disease, with less severe diarrhoea cases in calves⁽⁵⁷⁾. Lactoferrin concentration in ruminant colostrum greatly varies among species and breeds^(48,58,59). In ewes, Navarro *et al.*⁽⁴⁹⁾ measured the highest lactoferrin concentration of 0.72 mg/ml 24 h after lambing, and afterwards, it decreased with time. Due to the sampling time, these values are lower than those observed in our study (average of 3.59 ± 0.2 mg/ml over the first 24 h after lambing).

The metabolomic analysis performed in this study allowed us to describe, for the first time, ewe colostrum metabolites over the first 72 h post-partum, with a focus on OS composition. Our results indicated a decrease of OS concentration over time, in agreement with the literature⁽⁶⁰⁾. Sialic acid – part of OS – include *N*-acetylneuraminic acids and their derivatives, with *N*-acetylneuraminic acid (Neu5Ac) and *N*-glycolylneuraminic acid (Neu5Gc) being the most abundant. In ruminants, great variations of OS concentrations are observed^(61,62). In ovines, in agreement with our results, Neu5Gc is a dominant component among the colostrum sialic acids⁽⁶³⁾, whereas in bovine colostrum, Neu5Ac compounds are predominant with great amounts of 3'-sialyllactose (3'-SL)⁽⁶⁴⁾. Neu5Gc is found in variable concentrations in other ruminant species' colostrum, depending on breed⁽⁶⁵⁾. Whereas Neu5Gc represents a great proportion of total sialic



	R1	R2	R3	Name
3'-ASL	Neu5Ac	OH	OH	3'acetyl-sialyllactose
6'-ASL	OH	Neu5Ac	OH	6'acetyl-sialyllactose
3'-ASLN	Neu5Ac	OH	-NHCOCH3	3'acetyl-sialyllactosamine
6'ASLN	OH	Neu5Ac	-NHCOCH3	6'acetyl-sialyllactosamine
3'-GSL	Neu5Gc	OH	OH	3'glycolyl-sialyllactose
6'-GSL	OH	Neu5Gc	OH	6'glycolyl-sialyllactose
6'-GSLN	OH	Neu5Gc	-NHCOCH3	6'glycolyl-sialyllactosamine

Fig. 5. Spatial representations, name and nomenclature of the structures of major sialyl-oligosaccharides identified in ewe's colostrum.

acids in bovine colostrum (~32%), much lower levels (~6%) are found at day 90 of lactation in bovine milk⁽⁶⁶⁾. Such variations have also been observed along the lactation period in goat colostrum and milk, ranging from 40.1 to 7.4%^(67,68).

To our knowledge, this study is the first to describe ovine colostrum bacterial composition up to the Family level. T0-colostrum samples were collected as aseptically as possible, but contaminations from the environment, animal or human subjects cannot be excluded. Despite inter-individual variability, the total bacterial population was very stable over time at a concentration of $\sim 10^6$ copies of 16S rDNA gene/g. These results are close to the concentrations obtained through classical bacterial enumerations reported by Lindner *et al.*⁽⁶⁹⁾ and through qPCR quantification by Klein-Jöbstl *et al.*⁽²⁰⁾ on bovine colostrum (around $5 \log_{10}$ CFU/ml and a median of 4.55×10^5 copies/g, respectively). The bacterial composition of bovine colostrum and milk was described in several studies, confirming the presence of a resident microbiota in these biological fluids; however, exact inoculation mechanisms remain unclear. In addition to treat skin as a potential source of inoculation, the hypothesis of an enteromammary route for colostrum and milk microbiota has been suggested in several studies in human subjects and ruminants⁽⁷⁰⁾. In ruminant,

bacterial OTUs belonging to *Ruminococcus*, *Bifidobacterium* and *Peptostreptococcaceae* were observed in both milk and faeces in lactating cows⁽⁷¹⁾, and the enteromammary pathway of milk microbial inoculation has been suggested to occur through bacterial transport by immune cells⁽⁷²⁾. In our study, we observed a dominance of Proteobacteria, Firmicutes and Actinobacteria in T0-colostrum samples. More precisely, at the Family level, high relative abundances of Aerococcaceae, Corynebacteriaceae, Moraxellaceae and Staphylococcaceae were observed. Members among Aerococcaceae and Moraxellaceae taxa are commonly associated with mastitis, while *S. aureus* is considered as one of the main species responsible for clinical mastitis in dairy ruminant^(73,74), highlighting the presence of potential pathogens in ovine colostrum. Dominance of Proteobacteria in cow colostrum samples was observed in several studies^(19,20), while Lima *et al.*⁽⁷⁵⁾ observed a dominance of Firmicutes in colostrum from both primi- and multiparous cows. This heterogeneity in the bacterial composition is also observed at the genus level as *Lactobacillus*, *Staphylococcus*, *Bifidobacterium* and *Akkermansia* was reported⁽¹⁹⁾, but typical members of the rumen ecosystem were also observed such as *Prevotella* and *Ruminococcaceae*⁽⁷⁵⁾. In one study, *Enhydrobacter* was found to be predominant in cow



Table 4. Mean values \pm SEM and *P*-values associated with statistical analysis of OS concentrations in colostrum samples with a linear mixed model

OS (mg/l)	C					SC					P-value	Time	Supplementation	T x S
	0	5	12	24	72	0	5	12	24	72				
3'SL	119.41 \pm 16.40	90.46 \pm 11.78	81.81 \pm 11.59	52.27 \pm 7.73	25.27 \pm 4.03	119.62 \pm 18.67	94.38 \pm 10.56	76.44 \pm 11.07	43.16 \pm 6.60	23.85 \pm 4.96	<0.001	0.89	0.87	
6'SL	83.07 \pm 6.88	76.24 \pm 10.62	69.17 \pm 10.38	45.02 \pm 6.87	22.28 \pm 2.83	108.14 \pm 17.61	96.28 \pm 12.95	84.66 \pm 18.90	46.34 \pm 8.10	31.32 \pm 6.91	<0.001	0.14	0.64	
3'SLN	4.00 \pm 1.38	2.66 \pm 1.15	1.21 \pm 0.39	1.37 \pm 0.43	ND	2.30 \pm 0.80	1.11 \pm 0.40	0.90 \pm 0.15	0.4	ND	<0.001	0.31	0.41	
6'SLN	93.09 \pm 11.35	78.66 \pm 12.80	60.87 \pm 8.30	26.68 \pm 7.85	6.37 \pm 1.56	118.32 \pm 21.10	89.08 \pm 10.12	68.72 \pm 16.54	25.46 \pm 7.22	14.76 \pm 5.61	<0.001	0.26	0.63	
DSL	12.02 \pm 4.30	7.66 \pm 1.09	7.81 \pm 2.08	2.39 \pm 0.26	4.20 \pm 0.80	12.44 \pm 5.20	9.36 \pm 2.08	4.37 \pm 0.81	3.87 \pm 1.33	3.48 \pm 1.29	0.007	0.79	0.75	
Total	309.58 \pm 36.26	251.32 \pm 34.05	216.39 \pm 30.52	125.24 \pm 21.66	56.71 \pm 8.70	356.57 \pm 61.94	284.05 \pm 33.95	232.66 \pm 46.42	116.75 \pm 20.13	72.88 \pm 17.35	<0.001	0.35	0.77	
Neu5Ac														
3'-GSL	240.21 \pm 64.78	184.69 \pm 41.50	160.68 \pm 29.87	116.81 \pm 15.80	121.70 \pm 15.06	305.62 \pm 43.62	225.01 \pm 21.41	157.70 \pm 20.24	98.43 \pm 11.33	107.55 \pm 8.80	<0.001	0.51	0.30	
6'-GSL	89.91 \pm 16.15	85.39 \pm 13.76	79.35 \pm 10.97	61.21 \pm 6.31	69.31 \pm 5.70	147.38 \pm 25.69	130.07 \pm 16.26	98.09 \pm 17.48	65.85 \pm 5.81	73.38 \pm 5.59	<0.001	0.03	0.07	
6'-GSLN	119.00 \pm 16.48	106.26 \pm 13.47	89.14 \pm 12.18	48.76 \pm 10.38	19.81 \pm 4.07	248.47 \pm 49.03	180.22 \pm 21.19	121.03 \pm 22.84	51.49 \pm 10.37	30.70 \pm 7.95	<0.001	0.004	0.001	
Total	449.12 \pm 94.33	376.34 \pm 63.65	329.17 \pm 50.42	226.77 \pm 30.80	210.83 \pm 22.39	701.48 \pm 115.86	535.31 \pm 54.29	376.83 \pm 58.99	215.77 \pm 25.62	211.63 \pm 18.74	<0.001	0.06	0.02	
Neu5Gc														
Total	758.70 \pm 121.56	627.66 \pm 89.89	545.55 \pm 77.94	352.01 \pm 50.70	267.54 \pm 27.46	1058.05 \pm 176.52	819.36 \pm 84.13	609.49 \pm 104.46	332.52 \pm 43.25	284.50 \pm 33.97	<0.001	0.12	0.13	

colostrum⁽²⁰⁾, while facultative anaerobic bacteria such as *Streptococcus*, *Acinetobacter*, *Enterobacter* and *Corynebacterium* were observed in another work on the same animal species⁽⁷⁶⁾. Comparatively, *Lactobacillus* and *Bifidobacterium* were identified at very low relative abundances in some samples (<0.1 % on average), while *Staphylococcus*, *Acinetobacter*, *Corynebacterium* and *Streptococcus* were observed in higher proportions in our study. The presence of anaerobic and aerobic bacteria in colostrum may participate to early gut colonisation⁽⁷⁷⁾. The high heterogeneity of colostrum bacterial composition found in the literature might be linked to the variability observed in the other parameters (nutrients, bioactive molecules and IgG), as it is generally reported for this type of biological fluid. No correlation could be drawn between colostrum microbiota and any of the studied parameters in the present work due to the limited number of animals. Further studies are needed to bring more insights into potential mechanisms responsible for microbial inoculation of colostrum in the mammary gland.

Effect of live yeast supplementation in late gestation on colostrum and hypothesis on mechanisms involved in colostrum quality improvement

To date, very few publications have addressed the interest of probiotics as a promising nutritional strategy in gestating ruminants to improve offspring health and performance through the optimisation of colostrum management. It has been shown that peripartum cows' supplementation with a 2-strain cocktail did not improve colostrum and calves serum Ig concentrations, with only slight changes in colostrum nutrient yield⁽⁷⁸⁾, highlighting the importance of several parameters such as the administrated strain, the dose or the animal species considered. In our study, SC supplementation to the gestating ewes was shown to increase bioactive molecules in colostrum, especially the Neu5Gc-containing sialylated OS and the IgG concentrations. A significant increase of serum IgG concentration for lambs in an artificial rearing system is likely to result in a beneficial long-term effect on lamb immunity.

No SC effect was seen on colostrum composition over time in our study, in accordance with Macedo *et al.*⁽⁷⁹⁾, who observed no effect of a culture of *S. cerevisiae* on ewes' colostrum nutritional composition and yield. Contrarily, a cocktail of *Bacillus licheniformis* and *B. subtilis* (BioPlus 2B) supplementation increased daily milk yield, fat and protein contents and decreased lamb mortality (mainly due to diarrhoea) from 13.1 to 7.8 %⁽⁸⁰⁾. Stress hormones such as catecholamines are able to stimulate bacterial pathogens growth by enabling iron scavenging from normally inaccessible transferrin or lactoferrin⁽⁸¹⁾. An increase in lactoferrin content is thus of interest to prevent the growth of enteropathogenic bacteria in stressed ruminants. In our study, the numerical increase of lactoferrin content in colostrum due to SC supplementation could be of interest for both the protection of the mammary gland and the neonate health.

A higher level of colostrum IgG was observed in the SC group, suggesting either a higher level of IgG in the serum of the dam or a promoted IgG transfer efficiency into the

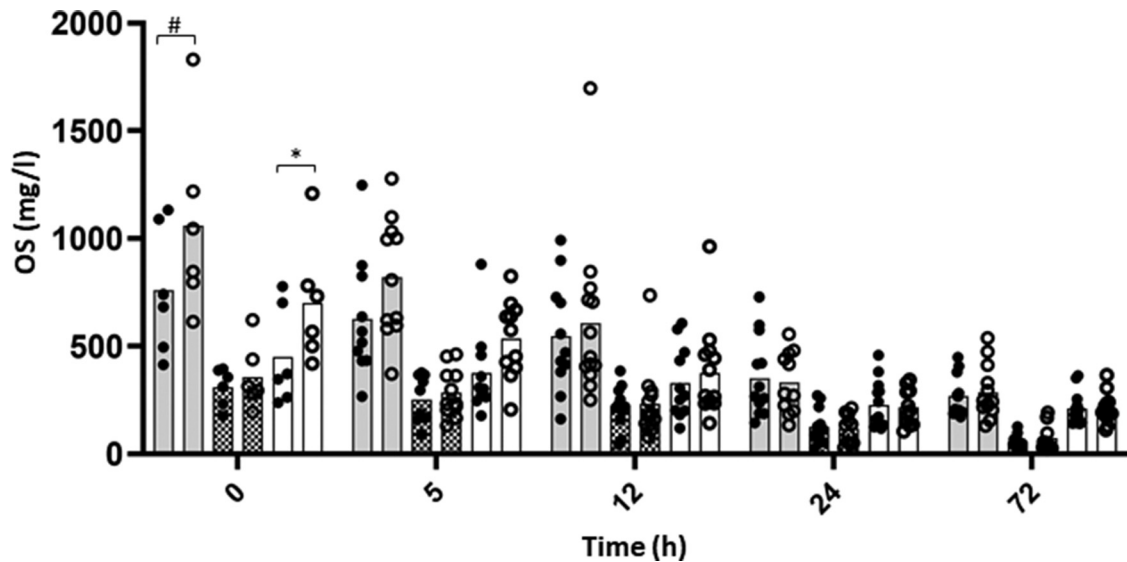


Fig. 6. Concentrations of sialyl oligosaccharides in colostrum of C (dark circle) or SC (open circle) ewes over time. Grey, hatched and open bars represent the total sialylated OS, Neu5Ac and Neu5Gc OS content, respectively. Significant effects of Supplementation factor are indicated in the graph with a bracket with # $P < 0.1$, * $P < 0.05$, ** $P < 0.01$ and *** $P < 0.0001$.

mammary gland of supplemented ewes. Once suckling is achieved, the neonate's serum Igs rise rapidly⁽⁸⁾. This process of passive Ig absorption in the intestine ceases at about 24 h of age and is referred to as intestinal closure⁽⁸²⁾. In our study, no effect of supplementation was seen in serum IgG of lambs kept with their mother. It can be hypothesised that as serum IgG of these lambs was already measured in high concentrations, the increase observed in colostrum IgG in supplemented ewes was not sufficient to induce a biological and observable difference in offspring. On the contrary, when lambs had access to colostrum only for 12 h before being separated from their dam and fed with milk replacer (Art groups), a significantly higher IgG concentration in the serum of lambs born from supplemented dams was observed. The risk for FTP was also reduced in this group, as three lambs out of the ten animals sampled at day 2 in the C group were considered as having a FTP (serum IgG concentration < 10 g/l), while it was observed for only one animal out of ten in the

SC group. Interestingly, the IgG level of this Art-Suppl group was similar to those observed in mothered lambs (Mot-groups), indicating a similar passive transfer of immunity. With SC supplementation to ewes, there would be thus a potential to counterbalance the negative impact of early mother separation and incomplete colostrum feeding in neonate lambs. In lambs, Ig production starts gradually several weeks after birth with the detection of endogenous IgG2, IgM and IgG1 in their serum after 2, 3 and 7 weeks, respectively⁽⁸³⁾. The significant improvement in serum IgG status in artificially fed lambs born from supplemented dams actually represents a real benefit in terms of protection against diseases during the neonatal period until the young animal starts to produce its own antibodies. The indirect effects of probiotic supplementation to the mother on offspring immunity have previously been studied by Wójcik *et al.*⁽⁸⁴⁾. The authors supplemented a brewer's yeast from the fourth month of ewe gestation or after lamb birth (15 or 30 g/h, respectively) and observed an

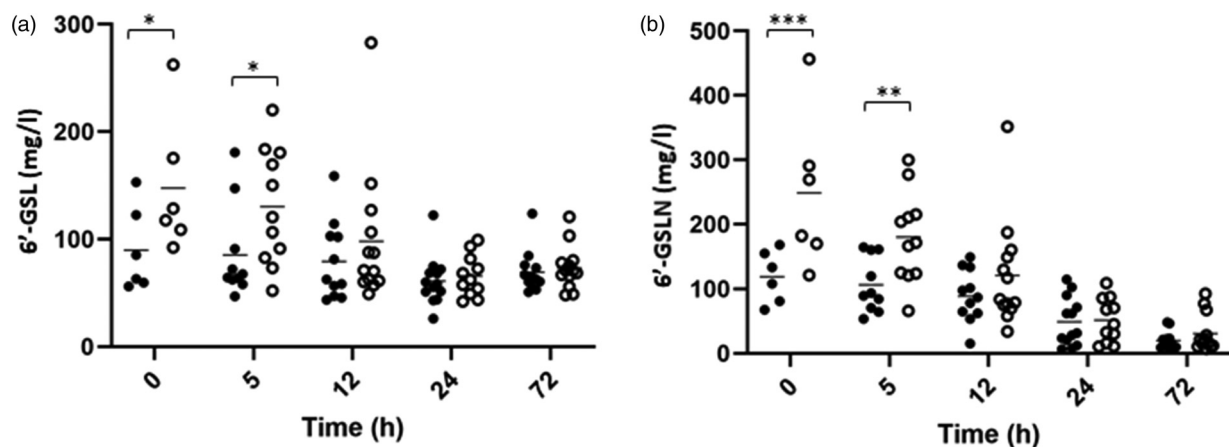


Fig. 7. Concentrations of 6'-GSL (a) and 6'-GSLN (b) OS in colostrum of C (dark circle) or SC (open circle) ewes over time. Significant effects of supplementation factor are indicated in the graph with a bracket with # $P < 0.1$, * $P < 0.05$, ** $P < 0.01$ and *** $P < 0.0001$.

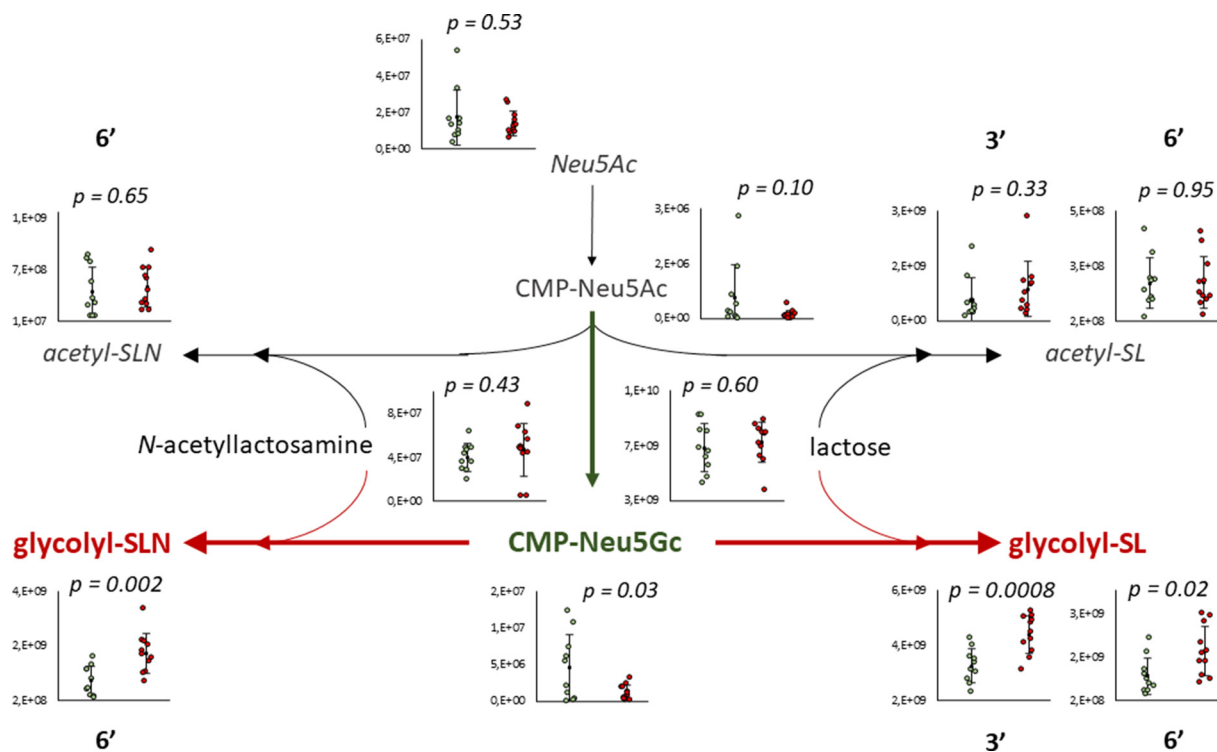


Fig. 8. Biosynthetic pathway of sialyl-oligosaccharides with compounds observed in a significantly higher concentration in the colostrum of C (green) and SC (red) ewes at T5h. 3' and 6' indicates the position of the sialyl group on the OS.

increase in specific and non-specific humoral and cellular immunity in lambs (lysozyme, Igs and blood cell activity). The effects of direct probiotic supplementation on neonate immunity have been addressed in several studies with contradictory results. In neonate calves supplemented with *Lactobacillus acidophilus* and *L. plantarum* or *L. plantarum* only, a significantly slower decrease in serum IgG was observed compared to the control group⁽⁸⁵⁾. The yeast probiotic *Saccharomyces boulardii* at 10^6 and 10^7 CFU/g in the supplemented feed enhanced blood IgG in lambs following a vaccine against BoHV-5 virus and *E. coli*, thus enhancing the humoral immune response^(86,87). On the contrary, the supplementation of *L. plantarum* to dairy goats did not impact blood IgG, IgM, and IgA concentrations⁽⁸⁸⁾.

OS are of great interest for neonate health as they can reach the intestine and promote beneficial bacterial growth. Indeed, high levels of OS were observed in the distal jejunum and colon, respectively, 6 and 12 h after colostrum ingestion by calves ($\sim 400 \mu\text{g/g}$ for 3'SL)⁽¹⁵⁾, which was linked to an increase in mucosa-associated *Bifidobacterium* in the distal

jejunum and colon^(12,53). Overall, OS have been shown to inhibit adhesion of *Pseudomonas aeruginosa*, *E. coli* O157:H7 and *S. aureus* to epithelial cells⁽⁸⁹⁾, as well as ETEC strains binding to the intestinal epithelium⁽¹⁶⁾. More precisely, Neu5Gc is a receptor for several pathogens^(90–92) and may appear as a first line of defence to limit a pathogen internalisation process. Thus, the increase of Neu5Gc compounds in the colostrum of supplemented ewes may increase newborn protection against various pathogens in the neonatal period, as well as promote the growth of beneficial bacterial in the intestine. In our study, a significant increase in Neu5Gc concentrations was observed up to 5 h after birth in the colostrum of supplemented ewes, with 6'-GSL and 6'-GSLN being highly enriched. The reconstruction of the biosynthesis pathway of Neu5Gc suggested a higher activity of sialyltransferase transforming CMP-Neu5Gc into Neu5Gc compounds, although it might not be the only alteration in the pathway. In a human study, a cocktail of probiotic bacteria modulated a human milk OS profile, increasing concentrations of 3'-sialyllactose and 3-fucosyllactose and decreasing the

Table 5. Mean and SEM of total bacterial population (16S rDNA copies/g colostrum) in C or SC colostrum samples over time and *P*-values associated through a linear mixed model

Group		Time (h)					<i>P</i> -value		
		0	5	12	24	72	Time	Supplementation	T × S
C	Mean	7.38×10^5	8.14×10^5	9.68×10^5	2.33×10^6	7.86×10^5	0.37	0.45	0.89
	SEM	3.35×10^5	1.85×10^5	4.59×10^5	1.53×10^6	3.41×10^5			
SC	Mean	4.35×10^5	1.01×10^6	2.57×10^6	2.42×10^6	1.29×10^6			
	SEM	1.12×10^5	4.60×10^5	1.42×10^6	1.07×10^6	6.75×10^5			

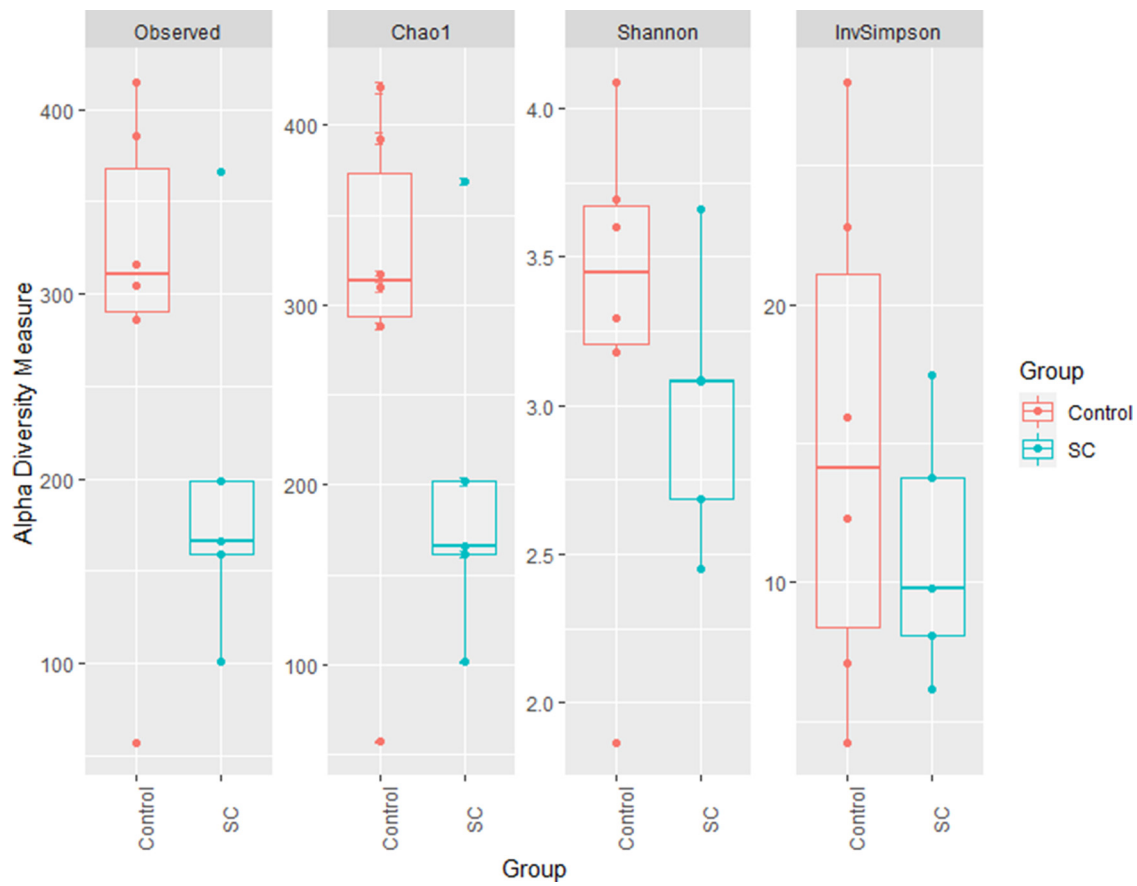


Fig. 9. Alpha diversity indices of T0-colostrum samples from C (n 6) and SC (n 5) groups.

concentration of 6'-sialyllactose⁽⁹³⁾, but no study considering probiotic administration and colostrum OS composition in ruminants has been published yet.

Colostrum and milk microbiota have been shown to be affected by probiotic administration in human subjects. Indeed, administration of a multi-strain probiotic during the perinatal period resulted in increased lactobacilli and bifidobacteria in colostrum and milk of mothers with vaginal delivery compared to placebo⁽⁹⁴⁾. Noteworthy, mothers with caesarian sections in the probiotic group did not present similar bacterial increases. In addition, the same viable strain of obligate anaerobe *Bifidobacterium breve* was identified at the same time in human breast milk and both maternal and neonatal faeces in one mother–child pair, demonstrating the existence of vertical mother–neonate transfer of maternal gut bacteria through breast feeding⁽⁹⁵⁾. In our study, we could not identify significant differences in colostrum microbiota of the two groups, maybe due to high inter-individual variability and a low number of samples. However, a higher numerical relative abundance of Corynebacteriaceae was observed in colostrum from the SC group. This taxon has been suggested to represent protection against mastitis pathogens through competition for niche adaptation by Porcellato *et al.*⁽⁷⁴⁾.

Currently, the exact mechanisms by which oral probiotics would affect colostrum composition remain unclear. The reasons for the observed increase of lactoferrin and colostrum

IgG concentrations due to SC supplementation are not yet understood; nor are those explaining the modifications of OS pathways leading to higher levels of Neu5Gc compounds in ewes' colostrum. In a human study, Mastromarino *et al.* suggested that orally distributed probiotic exerted a systemic effect through the improvement of various extra intestinal conditions, such as the enhancement of immune activity and modulation of systemic inflammation and metabolic disturbances⁽⁹⁴⁾. It can be hypothesised that probiotics, known to have beneficial effects on the GIT microbiota, would influence the bacterial transfer into the mammary gland and ultimately the microbial composition of colostrum and milk. According to this hypothesis, the ruminal microbial modifications expected with SC supplementation might impact lower gut microbiota, as suggested by studies of Bach *et al.*^(26,27) and thus might modulate this possible microbial transfer into the mammary gland. Live yeast supplementation leads to positive impacts on rumen microbiota and health but can also exert beneficial effects beyond the rumen on oxidative status and performance^(26,31,96,97), strengthening the systemic effect hypothesis. Further investigations are required to understand how SC supplementation could induce modifications in colostrum bioactive molecules and bacterial populations.

Finally, our data support that the supplementation of live yeast before parturition leads to improved colostrum global quality mainly through an increase in bioactive, health-related

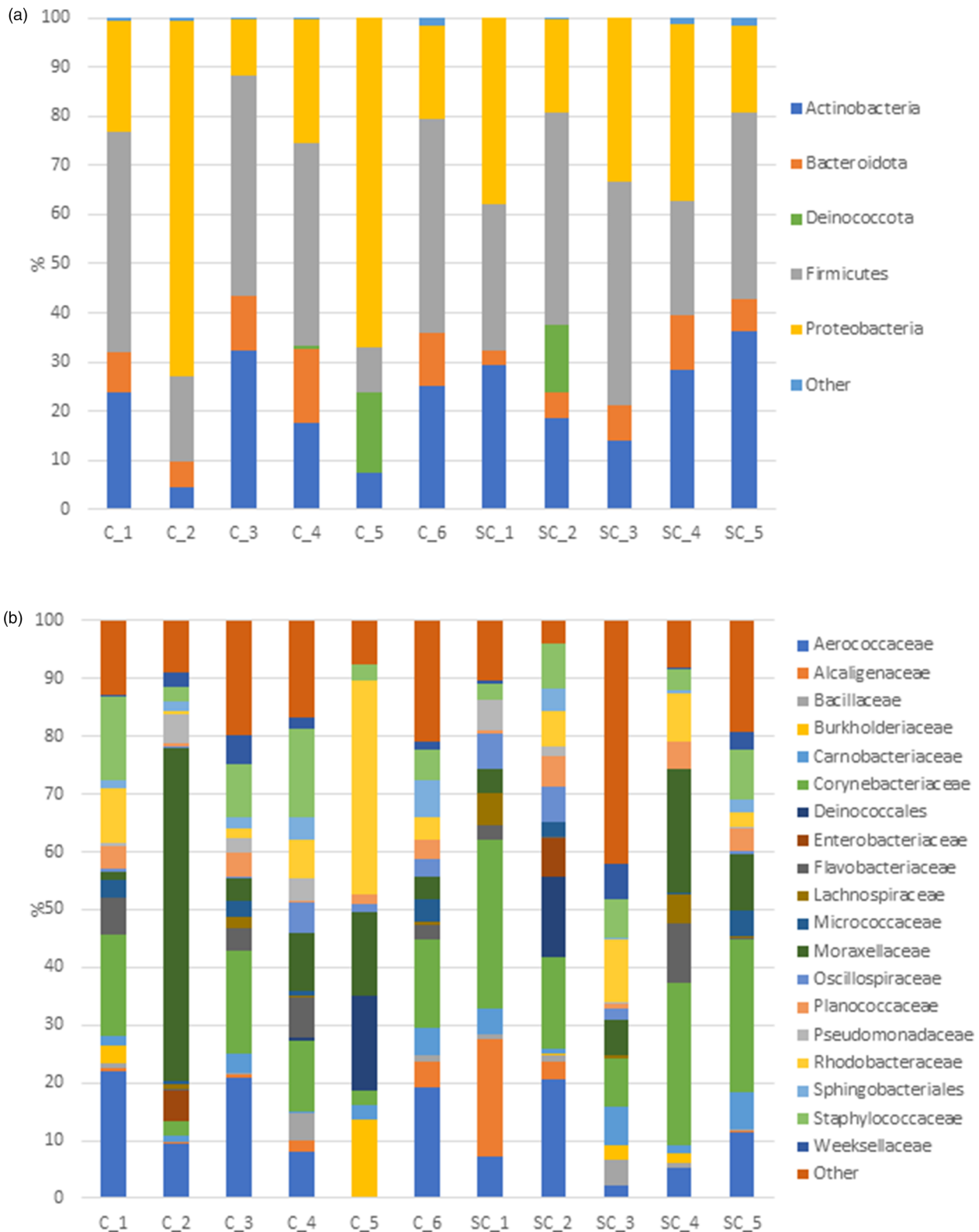


Fig. 10. Bacterial composition of T0-colostrum samples from C or SC groups at the Phylum (a) and Family (b) levels (only Families >1% relative abundance were represented).

molecules, without any negative impact on the measured nutrient content neither on bacterial diversity and taxonomic composition.

Supplementary material

The supplementary material for this article can be found at <https://doi.org/10.1017/jns.2022.3>.



Data availability statement

Sequencing data are available in the BioProject SRA database <https://submit.ncbi.nlm.nih.gov> as PRJNA732567.

Acknowledgments

The authors would like to thank Catherine Dhainaut and Raphael Gresse from UMR MEDIS and Yu Jeaju from the University of Guelph for their skilled technical assistance; Mickaël Bernard, Aline Cercy, Loic Gaillard, Bruno Viillard and Pierre Chirent from UE Herbipôle for their very valuable help in the animal experiment.

E.F. and F.C.D. conceptualized the study; L.D., J.R., E.F., and F.C.D. devised the study methodology; L.D., J.R., and C.A. prepared the software; L.D., J.R., and F.C.D. conducted the formal analysis; L.D., J.R., M.S., E.F., and F.C.D. carried out the investigations; L.D. was involved in the activity of data curation; L.D. and F.C.D. wrote the original draft; J.R., M.S., M.C., C.A., and E.F. conducted the review and did the editing; L.D. and F.C.D. carried out supervision; E.F. and F.C.D. were in charge of project administration and were involved in funding acquisition. All authors read the published version of the manuscript and were in agreement with it.

This research was partially funded by Lallemand SAS.

L.D., A.C. and F.C.-D. are employees of Lallemand SAS.

The present paper has been deposited in BioRxiv (www.biorxiv.org) on October 15th, 2021 <https://doi.org/10.1101/2021.10.14.464371>.

References

1. USDA (2014) *Dairy 2014: Health and Management Practices on U.S. Dairy Operations*. United Department of Agriculture, Animal and Plant Health Inspection Service, Veterinary Services, National Animal Health Monitoring System, February 2018, Report 3. https://www.aphis.usda.gov/aphis/ourfocus/animalhealth/monitoring-and-surveillance/nahms/nahms_dairy_studies
2. Raboisson D, Trillat P & Cahuzac C (2016) Failure of passive immune transfer in calves: a meta-analysis on the consequences and assessment of the economic impact. *PLoS One* **11**, e0150452, doi:10.1371/journal.pone.0150452.
3. Hammon HM, Steinhoff-Wagner J, Flor J, *et al.* (2013) Lactation biology symposium: role of colostrum and colostrum components on glucose metabolism in neonatal calves. *J Anim Sci* **91**, 685–695.
4. Hernandez-Castellano L, Almeida A, Castro N, *et al.* (2014) The colostrum proteome, ruminant nutrition and immunity: a review. *Curr Protein Pept Sci* **15**, 64–74.
5. National Animal Health Monitoring System (1993) *Transfer of maternal immunity to calves*. Highlights of the National Dairy Heifer Evaluation.
6. Ahmad R, Khan A, Javed MT, *et al.* (2000) The level of immunoglobulins in relation to neonatal lamb mortality in Pak-Karakul sheep. *Vet Arch* **11**, 129–139.
7. Hodgson JC, Moon GM, Hay LA, *et al.* (1992) Effectiveness of substitute colostrum in preventing disease in newborn lambs. *BSAP Occas Publ* **15**, 163–165.
8. Vihan VS (1988) Immunoglobulin levels and their effect on neonatal survival in sheep and goats. *Small Rumin Res* **1**, 135–144.
9. Lee CS & Outteridge PM (1981) Leucocytes of sheep colostrum, milk and involution secretion, with particular reference to ultrastructure and lymphocyte sub-populations. *J Dairy Res* **48**, 225–237.
10. Katsafadou AL, Politis AP, Mavrogianni VS, *et al.* (2019) Mammary defences and immunity against mastitis in sheep. *Animals (Basel)* **9**, 726, doi:10.3390/ani9100726.
11. Malmuthuge N, Chen Y, Liang G, *et al.* (2015) Heat-treated colostrum feeding promotes beneficial bacteria colonization in the small intestine of neonatal calves. *J Dairy Sci* **98**, 8044–8053.
12. Song Y, Malmuthuge N, Li F, *et al.* (2019) Colostrum feeding shapes the hindgut microbiota of dairy calves during the first 12 h of life. *FEMS Microbiol Ecol* **95**, doi: 10.1093/femsec/fiy203.
13. Ward RE, Niñonuevo M, Mills DA, *et al.* (2007) *In vitro* fermentability of human milk oligosaccharides by several strains of bifidobacteria. *Mol Nutr Food Res* **51**, 1398–1405.
14. Kavanaugh DW, O'Callaghan DW, Buttó LF, *et al.* (2013) Exposure of *Bifidobacterium longum subsp. infantis* to milk oligosaccharides increases adhesion to epithelial cells and induces a substantial transcriptional response. *PLoS One* **8**, e67224.
15. Fischer AJ, Malmuthuge N, Guan LL, *et al.* (2018) Short communication: the effect of heat treatment of bovine colostrum on the concentration of oligosaccharides in colostrum and in the intestine of neonatal male Holstein calves. *J Dairy Sci* **101**, 401–407.
16. Martín M-J, Martín-Sosa S & Hueso P (2002) Binding of milk oligosaccharides by several enterotoxigenic *Escherichia coli* strains isolated from calves. *Glycoconjugate J* **19**, 5–11.
17. Blum JW & Hammon H (2000) Colostrum effects on the gastrointestinal tract, and on nutritional, endocrine and metabolic parameters in neonatal calves. *Livestock Prod Sci* **66**, 151–159.
18. Ontsouka EC, Albrecht C & Bruckmaier RM (2016) Invited review: growth-promoting effects of colostrum in calves based on interaction with intestinal cell surface receptors and receptor-like transporters. *J Dairy Sci* **99**, 4111–4123.
19. Yeoman CJ, Ishaq SL, Bichi E, *et al.* (2018) Biogeographical differences in the influence of maternal microbial sources on the early successional development of the bovine neonatal gastrointestinal tract. *Sci Rep* **8**, 3197.
20. Klein-Jöbstl D, Quijada NM, Dzieciol M, *et al.* (2019) Microbiota of newborn calves and their mothers reveals possible transfer routes for newborn calves' gastrointestinal microbiota. *PLoS One* **14**, e0220554.
21. Napolitano F, De Rosa G & Sevi A (2008) Welfare implications of artificial rearing and early weaning in sheep. *Appl Anim Behav Sci* **110**, 58–72.
22. Mialon MM, Boivin X, Durand D, *et al.* (2021) Short- and mid-term effects on performance, health and qualitative behavioural assessment of Romane lambs in different milk feeding conditions. *Animal* **15**, 100157.
23. Chaucheyras-Durand F, Ameilbonne A, Auffret P, *et al.* (2019) Supplementation of live yeast based feed additive in early life promotes rumen microbial colonization and fibrolytic potential in lambs. *Sci Rep* **9**, 19216.
24. Amin AB & Mao S (2021) Influence of yeast on rumen fermentation, growth performance and quality of products in ruminants: a review. *Anim Nutr* **7**, 31–41.
25. Ogunade IM, Lay J, Andries K, *et al.* (2019) Effects of live yeast on differential genetic and functional attributes of rumen microbiota in beef cattle. *J Anim Sci Biotechnol* **10**, 68.
26. Bach A, López-García A, González-Recio O, *et al.* (2019) Changes in the rumen and colon microbiota and effects of live yeast dietary supplementation during the transition from the dry period to lactation of dairy cows. *J Dairy Sci* **102**, 6180–6198.
27. Bach A, Guasch I, Elcoso G, *et al.* (2018) Changes in gene expression in the rumen and colon epithelia during the dry period through lactation of dairy cows and effects of live yeast supplementation. *J Dairy Sci* **101**, 2631–2640.
28. Mann S, Leal Yepes F, Overton A, *et al.* (2016) Effect of dry period dietary energy level in dairy cattle on volume, concentrations of immunoglobulin G, insulin, and fatty acid composition of colostrum. *J Dairy Sci* **99**, 1515–1526.
29. Castro N, Capote J, Bruckmaier RM, *et al.* (2011) Management effects on colostrumogenesis in small ruminants: a review. *J Appl Anim Res* **39**, 85–93.



30. Pecka-Kielb E, Zachwieja A, Wojtas E, *et al.* (2018) Influence of nutrition on the quality of colostrum and milk of ruminants. *Mlječarstvo* **68**, 169–181.
31. Dunière L, Esparteiro D, Lebbaoui Y, *et al.* (2021) Changes in digestive microbiota, rumen fermentations and oxidative stress around parturition are alleviated by live yeast feed supplementation to gestating ewes. *J Fungi* **7**, 447.
32. CEPOQ (2021) *La maîtrise par étapes: l'allaitement artificiel*. Centre d'expertise en production ovines du Québec.
33. Institut de l'élevage (2014) *Les règles de base en allaitement artificiel*. CIIRPO Reconquête ovine.
34. Kessner D, Chambers M, Burke R, *et al.* (2008) Proteowizard: open source software for rapid proteomics tools development. *Bioinformatics* **24**, 2534–2536.
35. Smith CA, Want EJ, O'Maille G, *et al.* (2006) XCMS: processing mass spectrometry data for metabolite profiling using nonlinear peak alignment, matching, and identification. *Anal Chem* **78**, 779–787.
36. Tautenhahn R, Böttcher C & Neumann S (2008) Highly sensitive feature detection for high resolution LC/MS. *BMC Bioinformatics* **9**, 504.
37. Prince JT & Marcotte EM (2006) Chromatographic alignment of ESI-LC-MS proteomics data sets by ordered bijective interpolated warping. *Anal Chem* **78**, 6140–6152.
38. Smith CA, O'Maille G, Want EJ, *et al.* (2005) METLIN: a metabolite mass spectral database. *Ther Drug Monit* **27**, 747–751.
39. Bayat AR, Kairenius P, Stefański T, *et al.* (2015) Effect of camelina oil or live yeasts (*Saccharomyces cerevisiae*) on ruminal methane production, rumen fermentation, and milk fatty acid composition in lactating cows fed grass silage diets. *J Dairy Sci* **98**, 3166–3181.
40. Mosoni P, Chaucheyras-Durand F, Béra-Maillet C, *et al.* (2007) Quantification by real-time PCR of cellulolytic bacteria in the rumen of sheep after supplementation of a forage diet with readily fermentable carbohydrates: effect of a yeast additive. *J Appl Microbiol* **103**, 2676–2685.
41. Escudé F, Auer L, Bernard M, *et al.* (2018) FROGS: find, rapidly, OTUs with galaxy solution. *Bioinformatics* **34**, 1287–1294.
42. Mahé F, Rognes T, Quince C, *et al.* (2014) Swarm: robust and fast clustering method for amplicon-based studies. *PeerJ* **2**, e593.
43. Edgar RC, Haas BJ, Clemente JC, *et al.* (2011) UCHIME improves sensitivity and speed of chimera detection. *Bioinformatics* **27**, 2194–2200.
44. Ahmadi M, Boldura O, Milovanov C, *et al.* (2016) Colostrum from different animal species – a product for health status enhancement. Bulletin of University of Agricultural Sciences and Veterinary Medicine Cluj-Napoca. *Anim Sci Biotechnol* **73**, doi:10.15835/buasvmcn-asb:11949.
45. Csapó J, Csapó-Kiss Z, Martin TG, *et al.* (1994) Composition of colostrum from goats, ewes and cows producing twins. *Int Dairy J* **4**, 445–458.
46. Jacquet A & Rousset A-L (2013) *La production de colostrum chez la brebis: évaluation de la variabilité de la concentration et de la masse d'immunoglobulines G1(IgG1)*.
47. Barrington GM, McFadden TB, Huyler MT, *et al.* (2001) Regulation of colostrogenesis in cattle. *Livestock Prod Sci* **70**, 95–104.
48. Shapovalov S, Mikhaylov S, Andrey S, *et al.* (2019) Calf demand provision by mammary gland secretion during the first decade of post-natal development. *Helijon* **5**, e02676.
49. Navarro F, Galan-Malo P, Pérez M-D, *et al.* (2018) Lactoferrin and IgG levels in ovine milk throughout lactation: correlation with milk quality parameters. *Small Rumin Res*.
50. Kessler EC, Bruckmaier RM & Gross JJ (2019) Immunoglobulin G content and colostrum composition of different goat and sheep breeds in Switzerland and Germany. *J Dairy Sci* **102**, 5542–5549.
51. Gautier J-M, Corbière F & Sagot L (2013) *La qualité du colostrum est-elle une garantie pour un bon transfert d'immunité à l'agneau?* http://idele.fr/no_cache/recherche/publication/idelesolr/recommends/la-qualite-du-colostrum-est-elle-une-garantie-pour-un-bon-transfert-dimmunit-e-a-lagneau.html.
52. Balan P, Sik-Han K & Moughan PJ (2019) Impact of oral immunoglobulins on animal health – a review. *Anim Sci J* **90**, 1099–1110.
53. Fischer AJ, Song Y, He Z, *et al.* (2018) Effect of delaying colostrum feeding on passive transfer and intestinal bacterial colonization in neonatal male Holstein calves. *J Dairy Sci* **101**, 3099–3109.
54. García-Montoya IA, Cendón TS, Arévalo-Gallegos, *et al.* (2012) Lactoferrin a multiple bioactive protein: an overview. *Biochim Biophys Acta* **1820**, 226–236.
55. Gelasakis AI, Mavrogianni VS, Petridis IG, *et al.* (2015) Mastitis in sheep – the last 10 years and the future of research. *Vet Microbiol* **181**, 136–146.
56. Habing G, Harris K, Schuenemann G, *et al.* (2017) Lactoferrin reduces mortality in preweaned calves with diarrhea. *J Dairy Sci* **100**, 3940–3948.
57. Prenner ML, Prgomet C, Sauerwein H, *et al.* (2007) Effects of lactoferrin feeding on growth, feed intake and health of calves. *Arch Anim Nutr* **61**, 20–30.
58. McGrath BA, Fox PF, McSweeney PLH, *et al.* (2016) Composition and properties of bovine colostrum: a review. *Dairy Sci Technol* **96**, 133–158.
59. Rachman AB, Maheswari RRA & Bachroem MS (2015) Composition and isolation of lactoferrin from colostrum and milk of various goat breeds. *Procedia Food Sci* **3**, 200–210.
60. Martín-Sosa S, Martín M-J, García-Pardo L-A, *et al.* (2003) Sialyloligosaccharides in human and bovine milk and in infant formulas: variations with the progression of lactation. *J Dairy Sci* **86**, 52–59.
61. Urashima T, Taufik E, Fukuda K, *et al.* (2013) Recent advances in studies on milk oligosaccharides of cows and other domestic farm animals. *Biosci Biotechnol Biochem* **77**, 455–466.
62. Uesh NM, Olaniyan OA & Nok AJ (2008) Comparative analysis of sialic acid levels in the colostrum and milk of ruminants: possible role in the passive immunity against neonatal infections. *Int J Dairy Technol* **61**, 253–255.
63. Albrecht S, Lane JA, Mariño K, *et al.* (2014) A comparative study of free oligosaccharides in the milk of domestic animals. *Br J Nutr* **111**, 1313–1328.
64. Fischer-Tlustos AJ, Hertogs K, van Niekerk JK, *et al.* (2020) Oligosaccharide concentrations in colostrum, transition milk, and mature milk of primi- and multiparous Holstein cows during the first week of lactation. *J Dairy Sci*. doi:10.3168/jds.2019-17357.
65. McJarrow P & van Amelsfort-Schoonbeek J (2004) Bovine sialyl oligosaccharides: seasonal variations in their concentrations in milk, and a comparison of the colostrums of Jersey and Friesian cows. *Int Dairy J* **14**, 571–579.
66. Puente R & Hueso P (1993) Lactational changes in the N-glycolylneuraminic acid content of bovine milk gangliosides. *Bio Chem Hoppe-Seyler* **374**, 475–478.
67. Martínez-Ferez A, Rudloff S, Guadix A, *et al.* (2006) Goats' milk as a natural source of lactose-derived oligosaccharides: isolation by membrane technology. *Int Dairy J* **16**, 173–181.
68. de Sousa YRF, da Silva Vasconcelos MA, Costa R, *et al.* (2015) Sialic acid content of goat milk during lactation. *Livestock Sci* **177**, 175–180.
69. Lindner JDD, Santarelli M, Yamaguishi CT, *et al.* (2011) Recovery and identification of bovine colostrum microflora using traditional and molecular approaches. *Food Technol Biotechnol* **49**, 364–368.
70. Oikonomou G, Addis MF, Chassard C, *et al.* (2020) Milk microbiota: what are we exactly talking about? *Front Microbiol* **11**, 60.
71. Young W, Hine BC, Wallace OAM, *et al.* (2015) Transfer of intestinal bacterial components to mammary secretions in the cow. *PeerJ* **3**, e888.
72. Addis MF, Tanca A, Uzzau S, *et al.* (2016) The bovine milk microbiota: insights and perspectives from -omics studies. *Mol BioSyst* **12**, 2359–2372.
73. Angelopoulou A, Warda AK, Hill C, *et al.* (2019) Non-antibiotic microbial solutions for bovine mastitis – live biotherapeutics, bacteriophage, and phage lysins. *Crit Rev Microbiol* **45**, 564–580.



74. Porcellato D, Meisal R, Bombelli A, *et al.* (2020) A core microbiota dominates a rich microbial diversity in the bovine udder and may indicate presence of dysbiosis. *Sci Rep* **10**, 21608.
75. Lima SF, Teixeira AGV, Lima FS, *et al.* (2017) The bovine colostrum microbiome and its association with clinical mastitis. *J Dairy Sci* **100**, 3031–3042.
76. Hang BPT, Wredle E & Dicksved J (2020) Analysis of the developing gut microbiota in young dairy calves – impact of colostrum microbiota and gut disturbances. *Trop Anim Health Prod* **53**, 50.
77. Guo J, Li P, Zhang K, *et al.* (2020) Distinct stage changes in early-life colonization and acquisition of the gut microbiota and its correlations with volatile fatty acids in goat kids. *Front Microbiol* **11**, 584742, doi: 10.3389/fmicb.2020.584742.
78. Ort SB, Aragona KM, Chapman CE, *et al.* (2018) The impact of direct-fed microbials and enzymes on the health and performance of dairy cows with emphasis on colostrum quality and serum immunoglobulin concentrations in calves. *J Anim Physiol Anim Nutr* **102**, e641.
79. Macedo RJ, Arredondo V, García F, *et al.* (2012) Effect of supplemental yeast culture and physiological factors on colostrum and milk composition of Pelibuey ewes. *Trop Anim Health Prod* **44**, 349–354.
80. Kritas SK, Govaris A, Christodoulou G, *et al.* (2006) Effect of *Bacillus licheniformis* and *Bacillus subtilis* supplementation of ewe's feed on sheep milk production and young lamb mortality. *J Vet Med Ser A* **53**, 170–173.
81. Freestone P & Lyte M (2010) Stress and microbial endocrinology: prospects for ruminant nutrition. *Animal* **4**, 1248–1257.
82. Nowak R & Poindron P (2006) From birth to colostrum: early steps leading to lamb survival. *Reprod Nutr Dev* **46**, 431–446.
83. Klobasa F & Werhahn E (1989) Variations in the concentrations of the immunoglobulins IgG1, IgG2, IgM and IgA in sheep. 2. Changes in the blood of lambs of different breeds and crossbreeds during the course of the rearing period. *Berl Munch Tierarztl Wochenschr* **102**, 331–337.
84. Wójcik R, Milewski S, Małaczewska J, *et al.* (2008) Defence mechanisms of the offspring of ewes fed a diet supplemented with yeast (*Saccharomyces cerevisiae*) during pregnancy and lactation. *Cent Eur J Immunol* **33**, 197–201.
85. Al-Saiady MY (2010) Effect of probiotic bacteria on immunoglobulin G concentration and other blood components of newborn calves. *J Anim Vet Adv* **9**, 604–609.
86. Roos TB, Tabeleão VC, Dümmer LA, *et al.* (2010) Effect of *Bacillus cereus* var. *Toyoii* and *Saccharomyces boulardii* on the immune response of sheep to vaccines. *Food Agric Immunol* **21**, 113–118.
87. Roos TB, de Moraes CM, Sturbelle RT, *et al.* (2018) Probiotics *Bacillus toyonensis* and *Saccharomyces boulardii* improve the vaccine immune response to bovine herpesvirus type 5 in sheep. *Res Vet Sci* **117**, 260–265.
88. Maragkoudakis PA, Mountzouris K, Rosu C, *et al.* (2010) Feed supplementation of *Lactobacillus plantarum* PCA 236 modulates gut microbiota and milk fatty acid composition in dairy goats – a preliminary study. *Int J Food Microbiol* **141**(Suppl 1), S109–S116.
89. Lane JA, Calonne J, Slattery H, *et al.* (2019) Oligosaccharides isolated from MGO™ Manuka honey inhibit the adhesion of *Pseudomonas aeruginosa*, *Escherichia coli* O157:H7 and *Staphylococcus aureus* to human HT-29 cells. *Foods* **8**, 446, doi: 10.3390/foods8100446.
90. Martin MJ, Rayner JC, Gagneux P, *et al.* (2005) Evolution of human-chimpanzee differences in malaria susceptibility: relationship to human genetic loss of N-glycolylneuraminic acid. *Proc Natl Acad Sci USA* **102**, 12819–12824.
91. Smit H, Gaastra W, de Kamerling JP, *et al.* (1984) Isolation and structural characterization of the equine erythrocyte receptor for enterotoxigenic *Escherichia coli* K99 fimbrial adhesin. *Infect Immun* **46**, 578–584.
92. Takahashi T, Takano M, Kurebayashi Y, *et al.* (2014) N-glycolylneuraminic acid on human epithelial cells prevents entry of influenza A viruses that possess N-glycolylneuraminic acid binding ability. *J Virol* **88**, 8445–8456.
93. Seppo AE, Kukkonen AK, Kuitunen M, *et al.* (2019) Association of maternal probiotic supplementation with human milk oligosaccharide composition. *JAMA Pediatr* **173**, 286–288.
94. Mastromarino P, Capobianco D, Miccheli A, *et al.* (2015) Administration of a multistrain probiotic product (VSL#3) to women in the perinatal period differentially affects breast milk beneficial microbiota in relation to mode of delivery. *Pharmacol Res* **95–96**, 63–70.
95. Jost T, Lacroix C, Braegger CP, *et al.* (2014) Vertical mother–neonate transfer of maternal gut bacteria via breastfeeding. *Environ Microbiol* **16**, 2891–2904.
96. Perdomo MC, Marsola RS, Favoreto MG, *et al.* (2020) Effects of feeding live yeast at 2 dosages on performance and feeding behavior of dairy cows under heat stress. *J Dairy Sci* **103**, 325–339.
97. Mavrommatis A, Mitsiopoulou C, Christodoulou C, *et al.* (2020) Dietary supplementation of a live yeast product on dairy sheep milk performance, oxidative and immune status in peripartum period. *J Fungi* **6**, 334.