

# HIV Infection Is Associated with Attenuated Frontostriatal Intrinsic Connectivity: A Preliminary Study

Jonathan C. Ipser,<sup>1</sup> Gregory G. Brown,<sup>2</sup> Amanda Bischoff-Grethe,<sup>2</sup> Colm G. Connolly,<sup>3</sup> Ronald J. Ellis,<sup>2,4</sup>  
Robert K. Heaton,<sup>2</sup> Igor Grant,<sup>2</sup> AND Translational Methamphetamine AIDS Research Center (TMARC) Group<sup>2</sup>

<sup>1</sup>Department of Psychiatry and Mental Health, University of Cape Town, Cape Town, South Africa

<sup>2</sup>Department of Psychiatry, University of California, San Diego, California

<sup>3</sup>Department of Psychiatry, University of California, San Francisco, California

<sup>4</sup>Department of Neurosciences, University of California, San Diego, California

(RECEIVED September 16, 2014; FINAL REVISION February 6, 2015; ACCEPTED February 9, 2015; FIRST PUBLISHED ONLINE March 31, 2015)

## Abstract

HIV-associated cognitive impairments are prevalent, and are consistent with injury to both frontal cortical and subcortical regions of the brain. The current study aimed to assess the association of HIV infection with functional connections within the frontostriatal network, circuitry hypothesized to be highly vulnerable to HIV infection. Fifteen HIV-positive and 15 demographically matched control participants underwent 6 min of resting-state functional magnetic resonance imaging (RS-fMRI). Multivariate group comparisons of age-adjusted estimates of connectivity within the frontostriatal network were derived from BOLD data for dorsolateral prefrontal cortex (DLPFC), dorsal caudate and mediodorsal thalamic regions of interest. Whole-brain comparisons of group differences in frontostriatal connectivity were conducted, as were pairwise tests of connectivity associations with measures of global cognitive functioning and clinical and immunological characteristics (nadir and current CD4 count, duration of HIV infection, plasma HIV RNA). HIV-associated reductions in connectivity were observed between the DLPFC and the dorsal caudate, particularly in younger participants (<50 years,  $N = 9$ ). Seropositive participants also demonstrated reductions in dorsal caudate connectivity to frontal and parietal brain regions previously demonstrated to be functionally connected to the DLPFC. Cognitive impairment, but none of the assessed clinical/immunological variables, was also associated with reduced frontostriatal connectivity. In conclusion, our data indicate that HIV is associated with attenuated intrinsic frontostriatal connectivity. Intrinsic connectivity of this network may therefore serve as a marker of the deleterious effects of HIV infection on the brain, possibly *via* HIV-associated dopaminergic abnormalities. These findings warrant independent replication in larger studies. (*JINS*, 2015, 21, 203–213)

**Keywords:** Magnetic resonance imaging, Resting-state, Dorsolateral prefrontal cortex, Caudate nucleus, Thalamus, Dopamine

## INTRODUCTION

HIV infection is associated with cognitive impairment in as many as 50% of patients (Heaton et al., 2010), despite the demonstrated effectiveness of anti-retroviral medications in combating the disease. Deficits in executive functioning, working memory and verbal fluency are frequently observed in HIV patients, suggesting injury to frontostriatal circuitry in the brain (Woods, Moore, Weber, & Grant, 2009). The HIV virus is believed to cross the blood–brain barrier shortly after infection, and may cause neuronal damage *via* multiple mechanisms (Kaul & Lipton, 1999). These pathogenic effects

may be direct, through the shedding of neurotoxic viral proteins, such as GP120 and Tat (Nath, 2002), as well as indirect, through the initiation of neuroinflammatory cascades involving infected microglia, macrocytes, and lymphocytes that culminate in cellular apoptosis (Burdo, Lackner, & Williams, 2013; Heyes, Saito, & Markey, 1992).

Cognitive impairment in HIV has historically been characterized as resulting from subcortical pathology, in accordance with the presentation of HIV-associated dementia (HAD), and evidence of atrophy in the basal ganglia in HIV-positive patients (Jernigan et al., 1993). The widespread availability of highly active anti-retroviral (HAART) medication has seen a relative reduction in the incidence with which HIV patients present with frank motor deficits or dementia, with a concomitant increase in the representation of impairment in higher order cognitive abilities such as

Correspondence and reprint requests to: Gregory Brown, SDVAMC, 3350 La Jolla Village Drive, San Diego, CA 92161-116A. E-mail: gbrown@ucsd.edu

executive functioning (Heaton et al., 2010, 2011). This implicates HIV in injury to multimodal association regions of the brain, which is also suggested by abnormal levels of brain activation in the dorsolateral prefrontal (DLPFC) and parietal cortices in HIV-positive participants compared to healthy controls during the performance of working memory, attention, risky decision-making, and executive functioning tasks (Chang et al., 2001, 2004; Connolly et al., 2014; Ernst, Chang, Jovicich, Ames, & Arnold, 2002; Melrose, Tinaz, Castelo, Courtney, & Stern, 2008). Similar disruptions in local magnetic field potentials within the lateral PFC have been reported in HIV patients using magnetoencephalography (MEG), both at rest (Becker et al., 2012) and during the performance of visual attention (Wilson, Fox, et al., 2013) and fine motor control (Wilson, Heinrichs-Graham, et al., 2013) tasks.

That HIV-associated deficits in higher order cognitive processes may also result from injury to the striatum is suggested by models of corticostriatal neural circuits (Alexander, DeLong, & Strick, 1986; Nakano, Kayahara, Tsutsumi, & Ushiro, 2000; Parent & Hazrati, 1995; Selemon & Goldman-Rakic, 1985). Reports of atrophy of the caudate in HIV (Ances, Ortega, Vaida, Heaps, & Paul, 2012; Jernigan et al., 1993, 2005) are likely to be particularly relevant in this regard, given the presence of bidirectional white matter fibers from the dorsal aspect of the caudate to the DLPFC, as well as the association of atrophy of this structure with the severity of HIV-associated cognitive deficits (Hestad et al., 1993; Kieburtz et al., 1996). Abnormal functional connectivity of the caudate to the prefrontal cortex in response to task demands has also been documented in seropositive participants (Melrose et al., 2008).

Resting-state fMRI (RS-fMRI) represents a promising tool for assessing HIV-associated abnormalities in frontostriatal functional connectivity. RS-fMRI measures the intrinsic temporal covariation of blood oxygen level dependent (BOLD) signal acquired under minimally demanding conditions in which participants are typically instructed to close their eyes or fixate on a visually presented cross (Cole, Smith, & Beckmann, 2010). The popularity of RS-fMRI can be attributed to various factors: (a) it provides a measure of intrinsic connectivity networks of the brain that is highly reliable across both participants and scans (Damoiseaux et al., 2006; Shehzad et al., 2009; Van Dijk et al., 2010), (b) minimal task demands enhance compliance in difficult-to-scan populations, and (c), it is sensitive to brain abnormalities across a range of clinical disorders (Rosazza & Minati, 2011), including both chronic and acute HIV (Thomas, Brier, Ortega, Benzinger, & Ances, 2015; Thomas, Brier, Snyder, Vaida, & Ances, 2013; Wang et al., 2011).

The aim of this study was to assess the extent to which HIV infection in the post-HAART era is associated with disruptions in the intrinsic functional connectivity of regions comprising the frontostriatal network, and to identify possible clinical moderators of altered connectivity within this network. The thalamus was included given the observation in animal models of the basal ganglia of bidirectional thalamo-cortical and

thalamo-striatal projections (Cheatwood, Reep, & Corwin, 2003; Kamishina, Yurcisin, Corwin, & Reep, 2008), supporting the role of the mediodorsal nucleus of the thalamus, in particular, as a relay station between association regions within the frontal cortex and basal ganglia (Alexander et al., 1986). We predicted that both HIV infection and global cognitive impairment would be associated with reductions in connectivity within the frontostriatal circuitry. We also anticipated that the effect of HIV infection on intrinsic connectivity would be most pronounced in older patients, given evidence that HIV infection may amplify the detrimental effects of aging on cognitive performance and brain health (Brew, Crowe, Landay, Cysique, & Guillemin, 2009).

## METHODS

### Sample Selection

Participants were recruited as part of the Translational Methamphetamine AIDS Research Center (TMARC) project, an ongoing multidisciplinary investigation of the effects of methamphetamine abuse, HIV infection, and their comorbidity on a range of cognitive, clinical, and neuroimaging outcomes. The University of California San Diego's Human Research Protections Program approved the human rights and protection aspects of the study, and all participants provided written, informed consent. HIV status and seronegative status for Hepatitis C virus (HCV) were confirmed by MedMira Multiplo rapid test (MedMira Inc., Nova Scotia, Canada). Current CD4 T lymphocyte counts (cells/mL) were determined by flow cytometry at a medical center laboratory certified by Clinical Laboratory Improvement Amendments (CLIA), or CLIA equivalent. HIV RNA levels were measured in plasma by reverse transcriptase PCR (Roche Amplicor, v. 1.5, lower limit of quantitation 50 copies/mL). CD4 nadir was obtained by self-report for all cases, with the exception of a single individual whose measured CD4 count was lower than self-reported CD4 nadir, and for whom the laboratory measure was substituted.

Eligible participants were at least 18 years of age, without a prior head injury resulting in loss of consciousness for more than 30 min; previous cerebrovascular events, as determined by comprehensive neurological exam, or a seizure disorder, a demyelinating disease or any other non-HIV neurological disorder. Exclusion criteria included HCV co-infection or a lifetime diagnosis of schizophrenia or other psychotic disorder, as assessed with the Composite International Diagnostic Interview (CIDI version 2.1) (Kessler & Ustun, 2004) using DSM-IV criteria (American Psychiatric Association, 2000). Chronic renal or pulmonary disease, as well as any medical or neurological condition that could be a neuropsychiatric confound was also exclusionary. Individuals with contra-indications for MRI, or who changed dosage within the last 30 days of medications known to affect the hemodynamic response (e.g., antidiabetics, antihypertensives, antibiotics, and thyroid medications) were not eligible to participate. For this report, individuals meeting lifetime DSM-IV criteria for substance abuse (other than for

alcohol, marijuana, and nicotine, but including methamphetamine) in the prior year or dependence within the preceding five years were excluded, as were participants who tested positive for illicit drug use or alcohol on the day of scan, determined by urine toxicology screen and Breathalyzer, respectively. Lifetime abuse of, or dependence on, marijuana and abuse in the case of alcohol in the prior 12 months was not exclusionary. Nicotine use was assessed through breath carbon monoxide levels and the presence of cotinine in urine on the day of scan.

A global deficit score (GDS) was calculated for each participant based on demographically corrected standard scores ( $T -$  scores) from a comprehensive battery of neuropsychological tests administered within an average of 68 days of the scan (range: 19–180 days; see the supplementary document for a description of the individual tests (Supplementary Table S2) and the calculation of the GDS). The battery and its GDS summary score have previously demonstrated sensitivity to the effects of HIV on neuropsychological performance (Carey et al., 2004). Premorbid IQ was assessed using the reading subscale of the WRAT-4 (Casaletto et al., 2014; Wilkinson & Robertson, 2006). Depression symptoms were assessed immediately before the scan by means of the Beck Depression Inventory II (BDI) (Beck, Steer, & Brown, 1996). Given overlap of some of the BDI items with somatic symptoms of HIV infection (Kalichman, Rompa, & Cage, 2000), in addition to the total score, cognitive and affective symptoms of depression were assessed using the seven item BDI Fast Screen (BDI-FS) subscale (Beck et al., 1996).

### Data Acquisition

Whole-brain  $T_2^*$ -weighted gradient echo echo-planar images [36 slices, repetition time (TR) = 2 s, echo time (TE) = 30 ms, field of view (FOV) = 240 × 240 mm, 3.75 × 3.75 mm voxels, slice thickness = 4 mm, inter-slice gap = 0.4 mm] and corresponding field maps were acquired in the axial plane on two 3 T GE Discovery MR 750 (Milwaukee, WI) MRI scanners at the Keck fMRI Center at UCSD. A 6-min resting-state scan sequence was used, before which participants were instructed to clear their minds of all thoughts, and focus on a white cross presented on a screen at the end of the scanner bore (visible through a head-coil-mounted mirror). Brain segmentation and group-level registration into Talairach space were facilitated through the acquisition of high-resolution whole-brain T1-weighted fast spoiled gradient (FSPGR) anatomical images (TR = 8.1 s, TE = 3.17 ms, 1 mm isotropic voxels, flip angle = 8°, FOV = 256 × 256 mm, 172 sagittal slices).

### Data Preprocessing

RS-fMRI BOLD data were preprocessed using AFNI (Cox, 1996) (<http://afni.nimh.nih.gov/>). The first 4 volumes of the echo planar imaging (EPI) sequence were discarded to allow for stabilization of tissue magnetization, after adjusting for magnetic field inhomogeneities through application of echoplanar field maps (Greve, Brown, Mueller, Glover, & Liu, 2013). Standard preprocessing procedures were applied

to the EPI data, including the removal of outliers in the voxel time-series, followed by the simultaneous correction for motion and registration into Talairach space, and spatial smoothing using a seven millimeter full width at half maximum (FWHM) Gaussian kernel. Mean, linear, quadratic and cubic temporal trends, as well as the 6 rigid-body motion parameter estimates and their first-order derivatives were subsequently removed from the EPI time-series for each participant. The influence of physiological sources of artifact was addressed through regressing out both the mean BOLD signal from lateral ventricle seeds, as well as a localized estimate of signal from subject-specific white matter (WM) masks. The supplementary documentation contains a more detailed description of the data preprocessing pipeline.

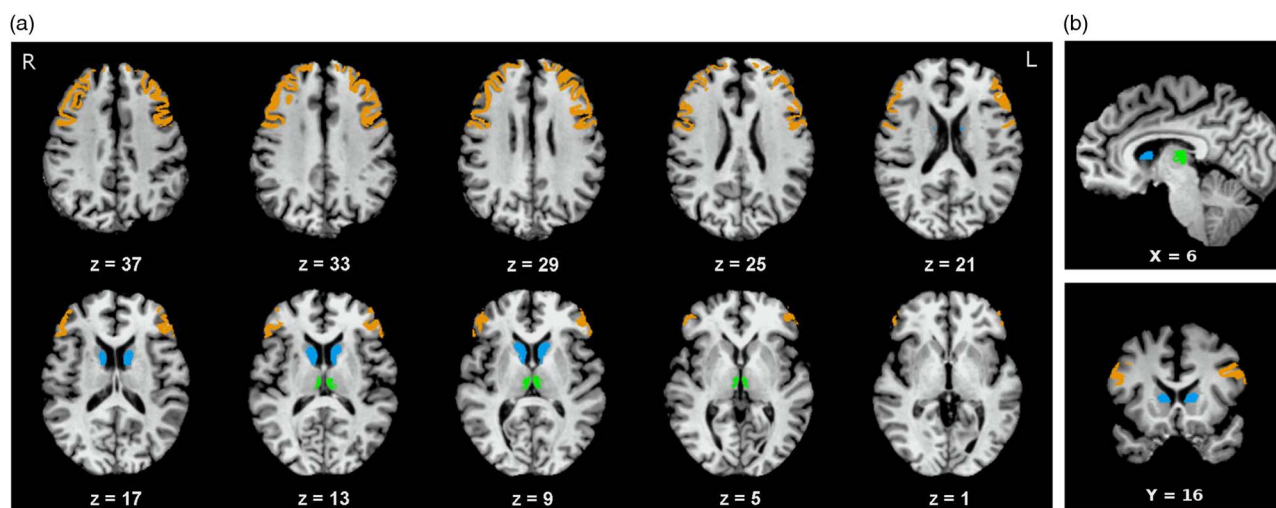
To be included in the analysis at least 5 min (150/176 volumes) of BOLD data had to be retained per participant, after removing volumes characterized by a high degree of motion ( $\geq 0.3$  mm relative to the immediately preceding time-point) or for which more than 10% of voxel intensities were identified by 3dTotcount as outliers. In cases of motion, data from both the high motion time-point as well as the preceding time-point were censored, an approach that is analogous to the scrubbing procedure pioneered by Power and colleagues (2014).

### Definition of Seed Regions

Region of interest (ROI) masks for the DLPFC, dorsal caudate and the mediodorsal thalamus were extracted from the areal segmentations contained within the Talairach atlas (Lancaster et al., 2000) provided with AFNI (see Figure 1). To isolate the dorsal caudate, the region superior to  $Z = 6$  mm in the caudate body was extracted, as per the protocol described by Di Martino and colleagues (Di Martino et al., 2008). The DLPFC mask was constructed from the union of the regions corresponding to BA 9 and BA 46 (Potkin et al., 2009). Subject-specific grey matter segmentation masks were subsequently intersected with the ROI masks to accommodate anatomical variability in the frontostriatal network. Bilateral masks were used for the inter-ROI correlations in the absence of specific hypotheses regarding hemispheric differences in the effect of HIV infection on frontostriatal connectivity.

### Data Analysis

Connectivity between ROIs was estimated by averaging the residual time series after preprocessing across voxels within each of the masks, and subsequently computing pairwise Pearson's correlation coefficients between these mean time series. Multiple linear regression statistical procedures were conducted to test for group differences in connectivity between ROIs, with terms included to model age and age × serostatus interaction effects. A categorical age variable was constructed, by dichotomizing age in years at 50, in keeping with conventions (Barclay et al., 2007) and given evidence of a bimodal age distribution in the sample. Although all



**Fig. 1.** DLPFC, dorsal caudate, and mediadorsal thalamic masks from a representative subject. (a) Mosaic of axial slices. (b) Coronal/sagittal slices. DLPFC = orange, dorsal caudate = blue, mediadorsal thalamus = green. Coordinates are in Talairach space.

connectivity estimates are reported as Pearson's correlation coefficients in this study, to aid interpretability, the Fisher Z transform was applied to these coefficients before the application of inferential test statistical procedures, to minimize the risk of violating distributional assumptions.

Where differences in connectivity between particular ROIs were observed, these were further explored by means of whole-brain analyses of group differences in voxel-wise correlations, using AFNI's 3dRegAna. This involved conducting separate voxel-wise linear regression analyses for each of the ROIs implicated. Group differences were assessed in the magnitude of Fisher Z transformed correlations coefficients calculated between the average BOLD time-series for the ROI and the time-series for all voxels across the entire brain. These analyses were corrected for mean-centered differences in age, as well as for any moderating effect of age on observed differences between groups in connectivity. A liberal family-wise correction for multiple statistical tests (voxel alpha <0.005, cluster extent = 858  $\mu$ L) was used given the exploratory nature of these tests and in recognition that standard family-wise thresholding in fMRI research may be too conservative (Lieberman & Cunningham, 2009).

Bivariate tests were conducted of differences between HIV-positive and control participants on demographic characteristics, including age and education in years, as well as scores for depression (BDI total and BDI-FS scores), pre-morbid IQ, and cognitive impairment (see Table 1). Potential confounds of differences in frontostriatal connectivity between the serogroups were identified as those clinical/demographic variables associated with both serostatus and the connectivity measure, with a lenient statistical threshold (alpha = 0.2) used to increase the power of these tests.

Tests for an association between pairwise inter-ROI frontostriatal connectivity estimates and nadir and current CD4 counts, as well as HIV duration (in months) were conducted using Spearman's rank correlation coefficients, to account for non-normal distribution of the data. Additionally, Welch *t* tests were used to test whether ranked intrinsic connectivity

estimates differed across participants as a function of a dichotomous measure of cognitive status, constructed using a cut-point of 0.5 on the GDS (see supplementary documentation). The inflated probability of false-positive findings resulting from multiple testing of clinical predictors of connectivity was adjusted for using Benjamini and Hochberg's false discovery rate algorithm (Benjamini & Hochberg, 1995). This method imposes an expected proportion of false discoveries that are considered acceptable among the total set of uncorrected statistically significant findings, according to a conventional threshold (5% in this study). The interpretability of the size of group differences was facilitated through presentation of Cohen's *d* effect size estimates that have been adjusted to correct for small sample bias (Hedges & Olkin, 1985).

All statistical tests and procedures to validate distributional assumptions were conducted using the R statistical platform (version 2.15.2; R Development Core Team, 2012). Non-parametric tests of differences between groups used routines implemented in the Coin R package, with Mann-Whitney exact *t* tests generating Z scores representing the magnitude of group differences (Hothorn, Hornik, van de Wiel, & Achim, 2008). Compliance with distributional assumptions of normality and homoscedasticity was determined qualitatively through visual inspection of quantile-quantile plots, by examination of the spread of model fit statistics relative to their residuals, as well as by means of the Shapiro-Wilk test (Shapiro & Wilk, 1965) before conducting any of the regression analyses.

## RESULTS

### Sample Characteristics

RS-fMRI data was initially acquired for this study from 36 participants, 6 of whom were excluded from the analysis (one HIV and two control participants due to scanner artifact and two control and one HIV participant due to insufficient BOLD

**Table 1.** Demographic and clinical characteristics of study sample<sup>a</sup>

	HIV ( <i>N</i> = 15)	Control ( <i>N</i> = 15)	Statistic <sup>b</sup>	ES (95% CI) <sup>c</sup>
<b>Demographics</b>				
Age	40.6 (14.46)	39.73 (12.55)	<i>Z</i> = -0.353	-0.13 (-0.85, 0.6)
Male <i>N</i> (%)	12 (80)	13 (86.7)	$\chi^2 = 0.24$	0.17 (-0.57, 0.91)
Right-handed <i>N</i> (%)	13 (86.7)	15 (100)	$\chi^2 = 2.143$	0.53 (-0.24, 1.3)
Education (years)	13.8 (2.18)	13.73 (1.33)	<i>Z</i> = -0.54	-0.19 (-0.92, 0.54)
<b>Ethnicity <i>N</i> (%)</b>				
African American	4 (26.7)	2 (13.3)		
Asian	1 (6.7)	0 (0)		
Caucasian	7 (46.7)	8 (53.3)		
Hispanic	3 (20)	5 (33.3)		
<b>Neurocognition and affect</b>				
GDS	0.32 (0.28)	0.29 (0.26)	<i>Z</i> = -0.230	-0.08 (-0.81, 0.65)
% impaired on GDS	26.7	26.7	$\chi^2 = 0$	0
WRAT-4 standard scores <sup>d</sup>	99.27 (10.65)	105.87 (13.05)	<i>Z</i> = 1.623	0.6 (-0.14, 1.35)
BDI-II total score	10.13 (9.63)	2.87 (3.98)	<i>Z</i> = -2.567 <sup>e</sup>	-1.03 (-1.81, -0.26)
BDI-II FS score	3.13 (4.47)	1.13 (1.81)	<i>Z</i> = -1.42	-0.52 (-1.26, 0.22)
<b>Indicators of clinical and treatment status</b>				
ART currently prescribed (%) <sup>e</sup>	85.7%			
ART never used (%) <sup>f</sup>	14.3%			
AIDS status (%)	33.3%			
<b>Indicators of HIV course</b>				
Duration of infection (months)	80.4 (90.47)			
CD4 nadir	309.87 (192.85)			
CD4 current	548.07 (255.29)			
HIV RNA plasma (range) <sup>g</sup>	2.11 (0.98)			

<sup>a</sup>Continuous data presented as means (standard deviations).

<sup>b</sup>Results from Chi-squared or Mann-Whitney tests with Monte-Carlo estimation of the exact distribution (number of replications = 9999) under the null hypothesis for categorical and continuous variables, respectively.

<sup>c</sup>Cohen's *d* effect size estimates were derived from the between group test statistics using formulae provided in Fritz et al. (2012), and corrected for small-sample bias using the compute.es package in R (Del Re, 2013).

<sup>d</sup>WRAT-4 standard scores, with mean of 100 and standard deviation of 15.

<sup>e</sup>*p* < 0.01.

<sup>f</sup>Medication was prescribed within 6 months of scan session. Data on medication status was not available for one participant.

<sup>g</sup>Viral load is reported in log base 10 copies per mL.

GDS = global deficit score; WRAT-4 = Wide Range Achievement Test (reading subscale); BDI-II = Beck's Depression Inventory, 2<sup>nd</sup> edition; ART = antiretroviral therapy.

data following censoring). Comparable average subject motion was observed within groups before censoring ( $t = -0.82$ ;  $p = .42$ ), with a high average proportion of time-points retained from the RS-fMRI sequences across all participants (97.6%). The 15 HIV participants and 15 healthy controls included in this study were comparable with respect to age, gender, education, ethnicity, proportion of cognitive impairment, and premorbid IQ (see Table 1). Although total depression scores on the BDI-II were significantly higher in the seropositive participants than controls [Mean (*SD*) = 10.13 (9.63), 2.87 (3.98), respectively; Cohen's *d* effect size (ES), 95% confidence interval (CI) = -1.03 (-1.81, -0.26)], these differences were not apparent when excluding data from items that may be confounded by somatic symptoms of HIV infection.

Equivalent proportions of participants in the HIV and control groups were classified as older adults ( $\geq 50$  years; 33.67% vs. 40%, respectively,  $\chi^2 = 0.14$ ;  $p > .1$ ). Groups were comparable with respect to the proportion classified as cognitively impaired (GDS > 0.5; 26.7% in both groups). Older HIV seropositive

participants were more highly educated and possessed higher estimates of premorbid IQ than their younger counterparts, with no such age effect observed among the control participants (see Supplementary Table S1).

With regards to clinical status, seropositive participants had been diagnosed with HIV for a median of 3 years before the scan, and the majority (85.7%) of the 14 seropositive participants for whom data on treatment status was available at the time of analysis were on antiretroviral medication (ARV) when imaged. Plasma viral load was undetectable (<50 copies per mL) in 11 (73%) of the HIV participants. Older HIV participants had been infected for longer than younger seropositive individuals ( $Z = -2.24$ ;  $p = .03$ ), although age was not associated with any marker of immunological status. Minimal substance use since the last study visit was observed across the entire sample, with the exception of tobacco (43.3%), alcohol (66.6%), and marijuana (23.3%). No group differences were detected for use of these substances over this time-period, or for anti-anxiety drugs,

**Table 2.** Pair-wise frontostriatal-thalamic intrinsic connectivity estimates<sup>a</sup>

Region	HIV ( <i>N</i> = 15)	Controls ( <i>N</i> = 15)
DLPFC – dorsal caudate	0.187 (0.22)	0.346 (0.22)
DLPFC – mdthalamus	0.152 (0.23)	0.228 (0.18)
Dorsal caudate - mdthalamus	0.266 (0.16)	0.293 (0.22)

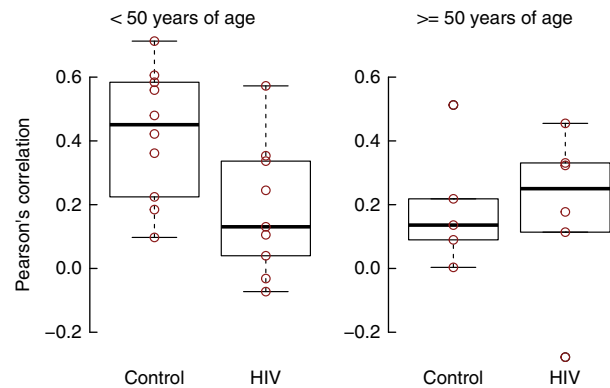
<sup>a</sup>Mean (SD) Pearson's correlations of voxel time-series between regions. ROI = region of interest; DLPFC = dorsolateral prefrontal cortex; mdthalamus = mediodorsal thalamus.

ecstasy, cocaine, hallucinogens, heroin, inhalants, methamphetamines, poppers, and sedatives (all  $p$ 's > .05). A greater proportion of seronegative (46.7%) than seropositive (13.3%) participants were diagnosed with lifetime alcohol abuse ( $\chi^2 = 3.97$ ;  $p < .05$ ), although no group differences were observed with respect to lifetime alcohol dependence ( $\chi^2 = 2.14$ ;  $p > .1$ ), current alcohol abuse or dependence, or measures of lifetime alcohol consumption and duration since last use.

### Comparisons of Frontostriatal Intrinsic Connectivity

Table 2 contains connectivity estimates between all three ROIs, stratified by serogroup. A linear regression model indicated that connectivity between the DLPFC and dorsal caudate was significantly lower in the HIV than control participants, [ $t = -2.45$ ;  $p < 0.02$ ;  $ES = -0.87$  (-1.63, -0.11)], after adjusting for effects of age across the entire sample, as well as any group-specific differences in the effect of age on connectivity. No evidence of an effect of serostatus was detected for connectivity between the DLPFC and mediodorsal thalamus [ $t = -0.16$ ;  $p > .05$ ;  $ES = -0.06$  (-0.78, 0.67)]. Differences in dorsal caudate—thalamic connectivity were not estimable using linear regression modeling, as the distribution of the model's residual errors failed to meet assumptions of normality or homoscedasticity, and the connectivity estimates were resistant to transformation. However, no effect of HIV status was observed for connectivity between these structures when group differences were tested using the non-parametric Mann-Whitney test [ $Z = 0.44$ ;  $p > .05$ ;  $ES = 0.16$  (-0.57, 0.88)].

A trend effect of age on connectivity between the DLPFC and dorsal caudate was observed in the regression model, with reductions in individuals over 50 years of age compared to their

**Fig. 2.** Participant-level estimates of connectivity between the DLPFC and dorsal caudate, stratified by HIV status and age.

younger counterparts [ $t = -2.02$ ;  $p = .05$ ;  $ES = -0.72$  (-1.47, 0.03)]. The relationship between age and connectivity did not differ by HIV serogroup ( $t = 1.44$ ;  $p = .16$ ). Nevertheless, connectivity estimates between these regions were larger in the 10 younger control participants than in the other groups combined (Mean, standard deviation (*SD*) of correlation coefficients: 0.42 (0.20) versus 0.19 (0.26), respectively, Mann-Whitney  $Z = 2.64$ ;  $p < .01$ , see Figure 2). Dorsal caudate-DLPFC connectivity was not associated with scores on the BDI-II (total or FS subscale), years of education, or performance on the WRAT (all  $p$ 's > .2).

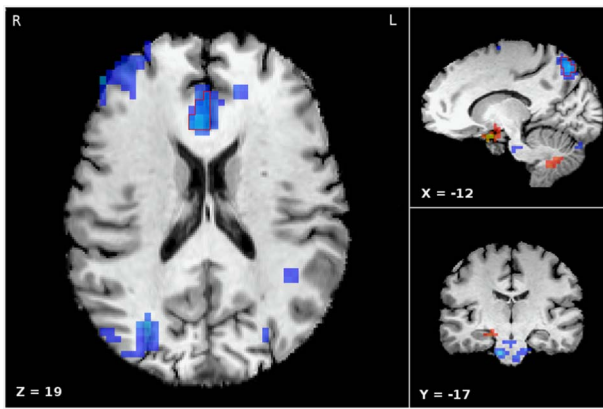
Based on differences in dorsal caudate-DLPFC connectivity for the HIV and control participants, whole-brain analyses of group differences in voxel-wise correlations were conducted for both structures separately, to identify additional regions of the brain in which connectivity to these structures varied as a function of serostatus, after adjusting for any effects of age or age  $\times$  serostatus interactions. Differences between serogroups in connectivity were only observed for the dorsal caudate, with reduced connectivity observed in the HIV-positive participants in a cluster in the dorsal anterior cingulate cortex (ACC) as well as the precuneus/superior parietal cortex (see Table 3 and Figure 3).

Differences in HIV duration, plasma viral RNA occupancy, and nadir and current CD4 count did not predict variability for any of the inter-regional connectivity estimates within the HIV-positive cohort, after correction for multiple comparisons (see Table 4). Further analyses prompted by the higher prevalence of lifetime alcohol abuse in the seronegative participants did not detect an association between a history of alcohol abuse and either cognitive impairment

**Table 3.** Clusters of reduced connectivity to dorsal caudate in HIV seropositive versus seronegative participants

Label	BA	X	Y	Z	Cluster extent (3.5 mm <sup>3</sup> voxels)	<i>t</i> -statistic
Controls > HIV						
Left precuneus/inferior parietal cortex	7	-12.2	-71	45	51	-4.386
Anterior cingulate	32	-1.8	34	17	22	-3.672

BA = Brodmann area.



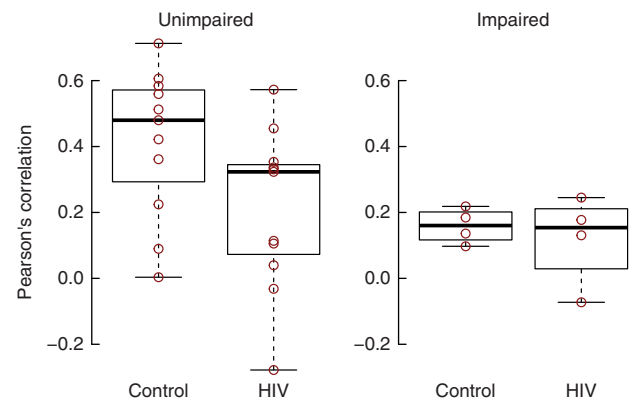
**Fig. 3.** Decreased (blue) and increased (red) whole-brain dorsal caudate connectivity as a function of HIV status, superimposed on a representative T1 MRI image in Talairach space. The overlay represents  $t$  test statistics signifying group differences (range:  $-4.860$  to  $4.659$ ), after adjusting for age and serostatus  $\times$  age interactions. Significant clusters of reduced connectivity in seropositive subjects (voxel alpha  $<0.005$ , cluster extent =  $858 \mu\text{L}$ ) outlined in red. Subthreshold differences in connectivity ( $p < .05$ , cluster extent  $\geq 429 \mu\text{L}$ ) provided for context.

( $\chi^2 = 0.13$ ;  $p > .1$ ) or DLPFC – dorsal caudate connectivity ( $Z = -0.29$ ;  $p > .1$ ).

The comparison of participants on cognitive status across the entire sample revealed that DLPFC-dorsal caudate connectivity was lower in the eight participants who were cognitively impaired than those who were unimpaired [Mean ( $SD$ ) =  $0.14$  ( $0.1$ ) and  $0.31$  ( $0.25$ ), respectively;  $t$  test on ranks:  $t = -2.62$ , degrees of freedom ( $df$ ) =  $25.78$ ,  $p = 0.02$ ; ES ( $95\%CI$ ) =  $-0.93$  ( $-1.7, -0.16$ ); see Figure 4)]. Among the 22 unimpaired participants, HIV infection was associated with lower connectivity estimates ( $Z = 2.00$ ;  $p < .05$ ).

## DISCUSSION

This is the first study to use intrinsic BOLD connectivity to investigate the effect of HIV infection in the post-HAART era on the integrity of the frontostriatal network, thus complementing an existing database of neurocognitive, histopathological, and *in vivo* imaging evidence suggesting that HIV compromises anatomical and functional frontostriatal



**Fig. 4.** Participant-level estimates of connectivity between the DLPFC and dorsal caudate, stratified by HIV and cognitive impairment status.

pathways in the brain (Melrose et al., 2008; Woods et al., 2009). Our data suggest that the consistent observation from task-based fMRI paradigms of an association between HIV infection and frontostriatal abnormalities (Plessis et al., 2014) also applies within the realm of intrinsic functional connectivity. Specifically, HIV-associated reductions in connectivity were detected between the DLPFC and the dorsal caudate. This was largely due to a relative reduction in connectivity estimates between these regions in younger HIV participants compared to their seronegative counterparts. Indeed, we observed that seropositive participants in general displayed similar levels of connectivity between the DLPFC and dorsal caudate as older control participants, for whom attenuations of connectivity likely reflect documented aging-induced frontostriatal atrophy (Fjell & Walhovd, 2010).

The observation of reduced frontostriatal connectivity in HIV-positive individuals is congruent with findings from studies using task-based experimental fMRI paradigms (Melrose et al., 2008; Schweinsburg et al., 2012). These studies have recorded alterations in frontostriatal functional connectivity among seropositive participants despite comparable performance to seronegative control participants, prompting investigators to conclude that task-based fMRI may be sensitive to HIV-associated brain injury before the manifestation of cognitive deficits associated with the disease (Connolly et al., 2014; Ernst et al., 2002; Melrose et al., 2008). The observation in this study that an HIV-associated reduction in frontostriatal connectivity was most apparent in cognitively unimpaired participants

**Table 4.** Association of clinical variables with inter-regional connectivity estimates<sup>a</sup>

	DLPFC-dcaudate	DLPFC-mdthalamus	dcaudate-mdthalamus
CD4 nadir	$\rho = -0.075$	$\rho = 0.018$	$\rho = -0.154$
CD4 current	$\rho = -0.093$	$\rho = -0.132$	$\rho = -0.096$
Infection duration	$\rho = -0.057$	$\rho = -0.361$	$\rho = 0.114$
Detectable plasma HIV RNA	$t(df) = 1.62 (12.9)$	$t(df) = 1.66 (6.70)$	$t(df) = 2.71 (9.33)$

<sup>a</sup> $p > 0.1$  for all 9 tests, after false discovery rate correction.

DLPFC = dorsolateral prefrontal cortex; dcaudate = dorsal caudate; mdthalamus = mediodorsal thalamus.

suggests this may also be the case with respect to RS-fMRI. Larger prospective studies will be required before more definitive statements can be made regarding the relationship between intrinsic frontostriatal functioning and HIV-associated cognitive impairment.

This study failed to replicate reports from a prior investigation of additive effects of age and HIV on intrinsic functional connectivity of the brain (Thomas et al., 2013), despite *post hoc* findings suggesting stronger frontostriatal connectivity in healthy younger individuals. This was surprising, given that similar additive effects have been reported across other imaging modalities (Becker et al., 2012; Ernst, Jiang, Nakama, Buchthal, & Chang, 2010), and have also implicated the caudate (Ances et al., 2012). In addition to insufficient power in this study to detect evidence of additive effects of HIV status and age on frontostriatal neurocircuitry, it is possible that higher levels of schooling and premorbid IQ in the older HIV-positive individuals may have protected these participants from HIV-associated injury to frontostriatal brain circuitry. Support for the latter explanation is undermined, however, by failure to observe evidence in our sample of an association between these factors and intrinsic frontostriatal connectivity.

Data from this study do not support an association between frontostriatal connectivity and a variety of immunological status or clinical history indicators. Although the majority of associations tested yielded small effect estimates (see Table 4), prior simulations have concluded that even relatively robust effects of demographic and behavioral measures, such as age, may require samples in the hundreds to reliably detect an association with intrinsic functional connectivity (Biswal et al., 2010). Nevertheless, our null findings are consistent with those reported in larger studies of chronic HIV across a range of intrinsic functional networks (Thomas et al., 2013, 2015).

In this investigation HIV infection was associated with additional reductions of dorsal caudate connectivity to the dorsal ACC and the precuneus/superior parietal cortex. Prior research indicates that both of these regions are functionally connected to the DLPFC. For instance, the cluster in the left precuneus occupies a region of the brain determined through a prior comparative study of resting-state connectivity in humans and monkeys to form part of a cognitive network that includes the DLPFC (Margulies et al., 2009). Furthermore, the dorsal ACC cluster maps onto a region identified as co-activating with the ipsilateral anterior DLPFC in a conjunction analysis of both task and resting-state fMRI datasets in healthy individuals (Cieslik et al., 2013). In that study, the anterior DLPFC cluster was observed to be responsive to tasks involving inhibitory cognitive control processes, consistent with the notion that the DLPFC forms a core component of an intrinsic central executive network (Vincent, Kahn, Snyder, Raichle, & Buckner, 2008) that is disrupted in HIV-positive individuals (Thomas et al., 2013).

Documented HIV-associated dopaminergic abnormalities provide one possible mechanism underlying the attenuated connectivity of the dorsal caudate with the central executive network observed in seropositive participants in this study.

Dopamine depletion has been observed in HIV patients in both cerebrospinal fluid and the central nervous system (Berger, Kumar, Kumar, Fernandez, & Levin, 1994; Kumar et al., 2009; Larsson, Hagberg, Forsman, & Norkrans, 1991; Sardar, Czudek, & Reynolds, 1996), with neuronal loss in the substantia nigra, the primary site for dopamine synthesis in the brain, detected in HIV patients on autopsy (Itoh, Mehraein, & Weis, 2000; Reyes, Faraldi, Senseng, Flowers, & Fariello, 1991). Dopaminergic abnormalities may also account for our finding that frontostriatal connectivity was attenuated in cognitively impaired participants, given evidence in healthy individuals of greater D1 receptor binding in the caudate and/or the DLPFC in individuals with stronger connectivity in these networks during the performance of working memory and executive functioning tasks (Backman et al., 2011; MacDonald, Karlsson, Rieckmann, Nyberg, & Bäckman, 2012; Rieckmann, Karlsson, Fischer, & Bäckman, 2011).

There are several limitations that should be borne in mind in interpreting the results of this study. Sample sizes used in this study were small, limiting power to detect between-group differences in frontostriatal intrinsic connectivity. In addition, despite care taken during data preprocessing to remove the influence of physiological and motion artifacts, residual effects from these sources may have influenced the intrinsic connectivity estimates observed in this study. Our dataset was also subject to the inherent ambiguities of RS-fMRI, stemming from its use of blood oxygenation as a proxy for neuronal activity, and an inability to determine whether observed correlations reflect direct or indirect anatomical connections in the brain (Buckner, 2013). The majority of HIV participants in this study were receiving antiretroviral medication at the time of the scan. While this increases the relevance of our findings to the HIV population in the post-HAART era, it was not possible to disentangle the relative contribution of potential neurotoxic effects of antiretroviral medication and the HIV virus on disruptions on intrinsic connectivity. Finally, various factors that may potentially undermine the generalizability of the study results to the HIV-positive community include the relatively high levels of schooling and premorbid IQ of older HIV-positive participants, as well as the relatively high proportion of seronegative participants who were cognitively impaired.

Substance use may serve as a potential confound of our findings, as it affects the same frontostriatal circuitry investigated in this study (Feil et al., 2010). Excluding individuals who screened positive for substance abuse and dependence, with the exception of marijuana, alcohol, and tobacco, for which the serogroups were comparable, minimized this possibility. Moreover, although lifetime alcohol abuse was more prevalent in the seronegative participants, it is unlikely to have confounded the results from this study, given lack of evidence for an association between a diagnosis of lifetime alcohol abuse and frontostriatal connectivity or cognitive impairment. Finally, the study results were discussed in the context of dopaminergic abnormalities associated with HIV, in keeping with the vast majority of research on the neurochemical determinants of oscillatory behavior in the



basal ganglia. The relationship between abnormalities in intrinsic connectivity in HIV and perturbations in other neurotransmitters that also may be relevant in explaining cognitive deficits in HIV, such as serotonin and noradrenalin (Arnsten, 2007), warrants further investigation.

## CONCLUSION

We were able to confirm that HIV infection is associated with abnormalities of intrinsic functional connectivity within the frontostriatal network. The observation that HIV status and cognitive impairment was associated with attenuated connectivity between the DLPFC and the dorsal caudate, and that the dorsal caudate was less well connected to the central executive network in HIV participants compared to controls, were discussed in terms of dopaminergic abnormalities associated with HIV infection. These findings suggest the potential of intrinsic functional connectivity as a marker of HIV-associated neuronal injury, even in the absence of corresponding cognitive impairment, and warrant independent replication in larger studies.

## ACKNOWLEDGMENTS

Dr. Ipser's contribution to this manuscript was supported by a post-doctoral fellowship grant jointly provided by the International AIDS Society (IAS) and the National Institute on Drug Abuse (NIDA). Dr. Steve Gotts (NIMH) provided advice regarding the implementation of the Anaticor preprocessing pipeline. The Translational Methamphetamine AIDS Research Center (TMARC) is supported by Center award P50DA026306 from NIDA. The funding agency played no role in the design and conduct of the study; collection, management, analysis, and interpretation of the data; and preparation, review, or approval of the manuscript. The views expressed in this article are those of the authors and do not reflect the official policy or position of the United States Government. The authors declare no conflict of interest with respect to either the conduct of the study or the content of this manuscript. The Translational Methamphetamine AIDS Research Center (TMARC) group is affiliated with the University of California, San Diego (UCSD) and the Sanford-Burnham Medical Research Institute. The TMARC is comprised of: Director – Igor Grant, M.D.; Co-Directors – Ronald J. Ellis, M.D., Ph.D., Scott L. Letendre, M.D., and Cristian L. Achim, M.D., Ph.D.; Center Manager – Steven Paul Woods, Psy.D.; Assistant Center Manager – Aaron M. Carr, B.A.; Clinical Assessment and Laboratory (CAL) Core: Scott L. Letendre, M.D. (Core Director), Ronald J. Ellis, M.D., Ph.D., Rachel Schrier, Ph.D.; Neuropsychiatric (NP) Core: Robert K. Heaton, Ph.D. (Core Director), J. Hampton Atkinson, M.D., Mariana Cherner, Ph.D., Thomas D. Marcotte, Ph.D., Erin E. Morgan, Ph.D.; Neuroimaging (NI) Core: Gregory Brown, Ph.D. (Core Director), Terry Jernigan, Ph.D., Anders Dale, Ph.D., Thomas Liu, Ph.D., Miriam Scadeng, Ph.D., Christine Fennema-Notestine, Ph.D., Sarah L. Archibald, M.A.; Neurosciences and Animal Models (NAM) Core: Cristian L. Achim, M.D., Ph.D. (Core Director), Eliezer Masliah, M.D., Stuart Lipton, M.D., Ph.D., Virawudh Soontornniyomkij, M.D.; Administrative Coordinating Core (ACC) – Data Management and Information Systems (DMIS) Unit: Anthony C. Gamst, Ph.D. (Unit

Chief), Clint Cushman, B.A. (Unit Manager); ACC – Statistics Unit: Ian Abramson, Ph.D. (Unit Chief), Florin Vaida, Ph.D., Reena Deutsch, Ph.D., Anya Umlauf, M.S.; ACC – Participant Unit: J. Hampton Atkinson, M.D. (Unit Chief), Jennifer Marquie-Beck, M.P.H. (Unit Manager); Project 1: Arpi Minassian, Ph.D. (Project Director), William Perry, Ph.D., Mark Geyer, Ph.D., Brook Henry, Ph.D.; Project 2: Amanda Bischoff Grethe, Ph.D. (Project Director), Martin Paulus, M.D., Ronald J. Ellis, M.D., Ph.D.; Project 3: Sheldon Morris, M.D., M.P.H. (Project Director), David M. Smith, M.D., M.A.S., Igor Grant, M.D.; Project 4: Svetlana Semenova, Ph.D. (Project Director), Athina Markou, Ph.D., James Kesby, Ph.D.; Project 5: Marcus Kaul, Ph.D. (Project Director).

## Supplementary material

To view supplementary material for this article, please visit <http://dx.doi.org/10.1017/S1355617715000156>

## REFERENCES

- Alexander, G.E., DeLong, M.R., & Strick, P.L. (1986). Parallel organization of functionally segregated circuits linking basal ganglia and cortex. *Annual Review of Neuroscience*, 9, 357–381.
- American Psychiatric Association. (2000). *Diagnostic and statistical manual of mental disorders* (4th ed.). Washington, DC: American Psychiatric Association.
- Ances, B.M., Ortega, M., Vaida, F., Heaps, J., & Paul, R. (2012). Independent effects of HIV, aging, and HAART on brain volumetric measures. *Journal of Acquired Immune Deficiency Syndromes*, 59(5), 469–477.
- Arnsten, A.F. (2007). Catecholamine and second messenger influences on prefrontal cortical networks of “representational knowledge”: A rational bridge between genetics and the symptoms of mental illness. *Cerebral Cortex*, 17(Suppl 1), i6–i15.
- Backman, L., Karlsson, S., Fischer, H., Karlsson, P., Brehmer, Y., Rieckmann, A., ... Nyberg, L. (2011). Dopamine D(1) receptors and age differences in brain activation during working memory. *Neurobiology of Aging*, 32(10), 1849–1856.
- Barclay, T.R., Hinkin, C.H., Castellon, S.A., Mason, K.I., Reinhard, M.J., Marion, S.D., ... Durvasula, R.S. (2007). Age-associated predictors of medication adherence in HIV-positive adults: Health beliefs, self-efficacy, and neurocognitive status. *Health Psychology*, 26(1), 40–49. doi: 10.1037/0278-6133.26.1.40
- Beck, A.T., Steer, R.A., & Brown, G.K. (1996). *Manual for the Beck Depression Inventory-II*. San Antonio, TX: Psychological Corporation.
- Becker, J.T., Bajo, R., Fabrizio, M., Sudre, G., Cuesta, P., Aizenstein, H.J., ... Bagic, A. (2012). Functional connectivity measured with magnetoencephalography identifies persons with HIV disease. *Brain Imaging and Behavior*, 6(3), 366–373.
- Benjamini, Y., & Hochberg, Y. (1995). Controlling the false discovery rate: A practical and powerful approach to multiple testing. *Journal of the Royal Statistical Society. Series B (Methodological)*, 57(1), 289–300.
- Berger, J.R., Kumar, M., Kumar, A., Fernandez, J.B., & Levin, B. (1994). Cerebrospinal fluid dopamine in HIV-1 infection. *AIDS*, 8(1), 67–71.
- Biswal, B.B., Mennes, M., Zuo, X.N., Gohel, S., Kelly, C., Smith, S.M., ... Milham, M.P. (2010). Toward discovery science of human brain function. *Proceedings of the National Academy of Sciences of the United States of America*, 107(10), 4734–4739.

- Brew, B.J., Crowe, S.M., Landay, A., Cysique, L.A., & Guillemin, G. (2009). Neurodegeneration and ageing in the HAART era. *Journal of Neuroimmune Pharmacology*, 4(2), 163–174.
- Buckner, R.L., Krienen, F.M., Yeo, B.T. (2013). Opportunities and limitations of intrinsic functional connectivity MRI. *Natural Neuroscience*, 16(7), 832–837.
- Burdo, T.H., Lackner, A., & Williams, K.C. (2013). Monocyte/macrophages and their role in HIV neuropathogenesis. *Immunological Reviews*, 254(1), 102–113.
- Carey, C.L., Woods, S.P., Gonzalez, R., Conover, E., Marcotte, T.D., Grant, I., ... HNRC Group. (2004). Predictive validity of global deficit scores in detecting neuropsychological impairment in HIV infection. *Journal of Clinical and Experimental Neuropsychology*, 26(3), 307–319.
- Casaletto, K.B., Cattie, J., Franklin, D.R., Moore, D.J., Woods, S.P., Grant, I., ... HNRG Group. (2014). The wide range achievement test-4 reading subtest “holds” in HIV-infected individuals. *Journal of Clinical and Experimental Neuropsychology*, 36(9), 992–1001.
- Chang, L., Speck, O., Miller, E.N., Braun, J., Jovicich, J., Koch, C., ... Ernst, T. (2001). Neural correlates of attention and working memory deficits in HIV patients. *Neurology*, 57(6), 1001–1007.
- Chang, L., Tomasi, D., Yakupov, R., Lozar, C., Arnold, S., Caparelli, E., & Ernst, T. (2004). Adaptation of the attention network in human immunodeficiency virus brain injury. *Annals of Neurology*, 56(2), 259–272.
- Cheatwood, J.L., Reep, R.L., & Corwin, J.V. (2003). The associative striatum: Cortical and thalamic projections to the dorsocentral striatum in rats. *Brain Research*, 968(1), 1–14.
- Cieslik, E.C., Zilles, K., Caspers, S., Roski, C., Kellermann, T.S., Jakobs, O., ... Eickhoff, S.B. (2013). Is there “one” DLPFC in cognitive action control? Evidence for heterogeneity from co-activation-based parcellation. *Cerebral Cortex*, 23(11), 2677–2689.
- Cole, D.M., Smith, S.M., & Beckmann, C.F. (2010). Advances and pitfalls in the analysis and interpretation of resting-state fMRI data. *Frontiers in Systems Neuroscience*, 4, 8.
- Connolly, C.G., Bischoff-Grethe, A., Jordan, S.J., Woods, S.P., Ellis, R.J., Paulus, M.P., ... Translational Methamphetamine, Aids Research Center Group. (2014). Altered functional response to risky choice in HIV infection. *PLoS One*, 9(10), e111583.
- Cox, R.W. (1996). AFNI: Software for analysis and visualization of functional magnetic resonance neuroimages. *Computers and Biomedical Research*, 29(3), 162–173.
- Damoiseaux, J.S., Rombouts, S.A., Barkhof, F., Scheltens, P., Stam, C.J., Smith, S.M., & Beckmann, C.F. (2006). Consistent resting-state networks across healthy subjects. *Proceedings of the National Academy of Sciences of the United States of America*, 103(37), 13848–13853.
- Del Re, A.C. (2013). compute.es: Compute Effect Sizes. R package version 0.2-2. Retrieved from <http://cran.r-project.org/web/packages/compute.es>
- Di Martino, A., Scheres, A., Margulies, D.S., Kelly, A.M.C., Uddin, L.Q., Shehzad, Z., ... Milham, M.P. (2008). Functional connectivity of human striatum: A resting state fMRI study. *Cerebral Cortex*, 18(12), 2735–2747.
- Ernst, T., Chang, L., Jovicich, J., Ames, N., & Arnold, S. (2002). Abnormal brain activation on functional MRI in cognitively asymptomatic HIV patients. *Neurology*, 59(9), 1343–1349.
- Ernst, T., Jiang, C.S., Nakama, H., Buchthal, S., & Chang, L. (2010). Lower brain glutamate is associated with cognitive deficits in HIV patients: A new mechanism for HIV-associated neurocognitive disorder. *Journal of Magnetic Resonance Imaging*, 32(5), 1045–1053.
- Feil, J., Sheppard, D., Fitzgerald, P.B., Yucel, M., Lubman, D.I., & Bradshaw, J.L. (2010). Addiction, compulsive drug seeking, and the role of frontostriatal mechanisms in regulating inhibitory control. *Neuroscience and Biobehavioral Reviews*, 35(2), 248–275.
- Fjell, A.M., & Walhovd, K.B. (2010). Structural brain changes in aging: Courses, causes and cognitive consequences. *Reviews in the Neurosciences*, 21(3), 187–221.
- Fritz, C.O., Morris, P.E., & Richler, J.J. (2012). Effect size estimates: Current use, calculations, and interpretation. *Journal of Experimental Psychology. General*, 141(1), 2–18.
- Greve, D.N., Brown, G.G., Mueller, B.A., Glover, G., & Liu, T.T. (2013). A survey of the sources of noise in fMRI. *Psychometrika*, 78(3), 396–416.
- Heaton, R.K., Clifford, D.B., Franklin, D.R., Jr., Woods, S.P., Ake, C., Vaida, F., ... Charter Group. (2010). HIV-associated neurocognitive disorders persist in the era of potent antiretroviral therapy: CHARTER Study. *Neurology*, 75(23), 2087–2096.
- Heaton, R.K., Franklin, D.R., Ellis, R.J., McCutchan, J.A., Letendre, S.L., Leblanc, S., ... Group, H. N. R. C. (2011). HIV-associated neurocognitive disorders before and during the era of combination antiretroviral therapy: Differences in rates, nature, and predictors. *Journal of Neurovirology*, 17(1), 3–16.
- Hedges, L.V., & Olkin, L.I. (1985). *Statistical methods for meta-analysis*. Orlando, FL: Academic Press.
- Hestad, K., McArthur, J.H., Dal Pan, G.J., Selnes, O.A., Nance-Sproson, T.E., Aylward, E., ... McArthur, J.C. (1993). Regional brain atrophy in HIV-1 infection: Association with specific neuropsychological test performance. *Acta Neurologica Scandinavica*, 88(2), 112–118.
- Heyes, M.P., Saito, K., & Markey, S.P. (1992). Human macrophages convert L-tryptophan into the neurotoxin quinolinic acid. *The Biochemical Journal*, 283(Pt 3), 633–635.
- Hothorn, T., Hornik, K., van de Wiel, M.A., & Zeileis, A. (2008). Implementing a class of permutation tests: The coin Package. *Journal of Statistical Software*, 28(8), 1–23. <http://www.jstatsoft.org/v28/i08/>
- Itoh, K., Mehraein, P., & Weis, S. (2000). Neuronal damage of the substantia nigra in HIV-1 infected brains. *Acta Neuropathologica*, 99(4), 376–384.
- Jernigan, T.L., Archibald, S., Hesselink, J.R., Atkinson, J.H., Velin, R.A., McCutchan, J.A., ... Grant, I. (1993). Magnetic resonance imaging morphometric analysis of cerebral volume loss in human immunodeficiency virus infection. The HNRC Group. *Archives of Neurology*, 50(3), 250–255.
- Jernigan, T.L., Gamst, A.C., Archibald, S.L., Fennema-Notestine, C., Mindt, M.R., Marcotte, T.D., ... Grant, I. (2005). Effects of methamphetamine dependence and HIV infection on cerebral morphology. *American Journal of Psychiatry*, 162(8), 1461–1472.
- Kalichman, S.C., Rompa, D., & Cage, M. (2000). Distinguishing between overlapping somatic symptoms of depression and HIV disease in people living with HIV-AIDS. *Journal of Nervous and Mental Disease*, 188(10), 662–670.
- Kamishina, H., Yurcisin, G.H., Corwin, J.V., & Reep, R.L. (2008). Striatal projections from the rat lateral posterior thalamic nucleus. *Brain Research*, 1204, 24–39.
- Kaul, M., & Lipton, S.A. (1999). Chemokines and activated macrophages in HIV gp120-induced neuronal apoptosis. *Proceedings of the National Academy of Sciences of the United States of America*, 96(14), 8212–8216.
- Kessler, R.C., & Ustun, T.B. (2004). The World Mental Health (WMH) Survey Initiative Version of the World Health Organization (WHO) Composite International Diagnostic Interview (CIDI).

- International Journal of Methods in Psychiatric Research*, 13(2), 93–121.
- Kieburz, K., Ketonen, L., Cox, C., Grossman, H., Holloway, R., Booth, H., ... Caine, E.D. (1996). Cognitive performance and regional brain volume in human immunodeficiency virus type 1 infection. *Archives of Neurology*, 53(2), 155–158.
- Kumar, A.M., Fernandez, J.B., Singer, E.J., Commins, D., Waldrop-Valverde, D., Ownby, R.L., & Kumar, M. (2009). Human immunodeficiency virus type 1 in the central nervous system leads to decreased dopamine in different regions of postmortem human brains. *Journal of Neurovirology*, 15(3), 257–274.
- Lancaster, J.L., Woldorff, M.G., Parsons, L.M., Liotti, M., Freitas, C.S., Rainey, L., ... Fox, P.T. (2000). Automated Talairach atlas labels for functional brain mapping. *Human Brain Mapping*, 10(3), 120–131.
- Larsson, M., Hagberg, L., Forsman, A., & Norkrans, G. (1991). Cerebrospinal fluid catecholamine metabolites in HIV-infected patients. *Journal of Neuroscience Research*, 28(3), 406–409.
- Lieberman, M.D., & Cunningham, W.A. (2009). Type I and Type II error concerns in fMRI research: Re-balancing the scale. *Social Cognitive and Affective Neuroscience*, 4(4), 423–428.
- MacDonald, S.W.S., Karlsson, S., Rieckmann, A., Nyberg, L., & Bäckman, L. (2012). Aging-related increases in behavioral variability: Relations to losses of dopamine D1 receptors. *Journal of Neuroscience*, 32(24), 8186–8191.
- Margulies, D.S., Vincent, J.L., Kelly, C., Lohmann, G., Uddin, L.Q., Biswal, B.B., ... Petrides, M. (2009). Precuneus shares intrinsic functional architecture in humans and monkeys. *Proceedings of the National Academy of Sciences of the United States of America*, 106(47), 20069–20074.
- Melrose, R.J., Tinaz, S., Castelo, J.M.B., Courtney, M.G., & Stern, C.E. (2008). Compromised fronto-striatal functioning in HIV: An fMRI investigation of semantic event sequencing. *Behavioural Brain Research*, 188(2), 337–347.
- Nakano, K., Kayahara, T., Tsutsumi, T., & Ushiro, H. (2000). Neural circuits and functional organization of the striatum. *Journal of Neurology*, 247(Suppl 5), VI–V15.
- Nath, A. (2002). Human immunodeficiency virus (HIV) proteins in neuropathogenesis of HIV dementia. *The Journal of Infectious Diseases*, 186(Suppl 2), S193–S198.
- Parent, A., & Hazrati, L.N. (1995). Functional anatomy of the basal ganglia. I. The cortico-basal ganglia-thalamo-cortical loop. *Brain Research. Brain Research Reviews*, 20(1), 91–127.
- Plessis, S.D., Vink, M., Joska, J.A., Koutsilieri, E., Stein, D.J., & Emsley, R. (2014). HIV infection and the fronto-striatal system: A systematic review and meta-analysis of fMRI studies. *AIDS*, 28(6), 803–811.
- Potkin, S.G., Turner, J.A., Brown, G.G., McCarthy, G., Greve, D.N., Glover, G.H., ... Fbirm. (2009). Working memory and DLPFC inefficiency in schizophrenia: The FBIRN study. *Schizophrenia Bulletin*, 35(1), 19–31.
- Power, J.D., Mitra, A., Laumann, T.O., Snyder, A.Z., Schlaggar, B.L., & Petersen, S.E. (2014). Methods to detect, characterize, and remove motion artifact in resting state fMRI. *Neuroimage*, 84, 320–341.
- R Development Core Team. (2012). *R: A language and environment for statistical computing*. Vienna, Austria: R Foundation for Statistical Computing. Retrieved from, <http://www.R-project.org/>
- Reyes, M.G., Faraldi, F., Senseng, C.S., Flowers, C., & Fariello, R. (1991). Nigral degeneration in acquired immune deficiency syndrome (AIDS). *Acta Neuropathologica*, 82(1), 39–44.
- Rieckmann, A., Karlsson, S., Fischer, H., & Bäckman, L. (2011). Caudate dopamine D1 receptor density is associated with individual differences in frontoparietal connectivity during working memory. *Journal of Neuroscience*, 31(40), 14284–14290.
- Rosazza, C., & Minati, L. (2011). Resting-state brain networks: Literature review and clinical applications. *Neurological Sciences*, 32(5), 773–785.
- Sardar, A.M., Czudek, C., & Reynolds, G.P. (1996). Dopamine deficits in the brain: The neurochemical basis of parkinsonian symptoms in AIDS. *Neuroreport*, 7(4), 910–912.
- Schweinsburg, B.C., Scott, J.C., Schweinsburg, A.D., Jacobus, J., Theilmann, R.J., Frank, L.R., ... H.I.V. Neurobehavioral Research Center Group. (2012). Altered prefronto-striato-parietal network response to mental rotation in HIV. *Journal of Neurovirology*, 18(1), 74–79.
- Selemon, L.D., & Goldman-Rakic, P.S. (1985). Longitudinal topography and interdigitation of corticostriatal projections in the rhesus monkey. *The Journal of Neuroscience*, 5(3), 776–794.
- Shapiro, S.S., & Wilk, M.B. (1965). An analysis of variance test for normality (complete samples). *Biometrika*, 52(3–4), 591–611.
- Shehzad, Z., Kelly, A.M., Reiss, P.T., Gee, D.G., Gotimer, K., Uddin, L.Q., ... Milham, M.P. (2009). The resting brain: Unconstrained yet reliable. *Cerebral Cortex*, 19(10), 2209–2229.
- Thomas, J.B., Brier, M.R., Ortega, M., Benzinger, T.L., & Ances, B.M. (2015). Weighted brain networks in disease: Centrality and entropy in human immunodeficiency virus and aging. *Neurobiology of Aging*, 36, 401–412.
- Thomas, J.B., Brier, M.R., Snyder, A.Z., Vaida, F.F., & Ances, B.M. (2013). Pathways to neurodegeneration: Effects of HIV and aging on resting-state functional connectivity. *Neurology*, 26, 1186–1193.
- Van Dijk, K.R., Hedden, T., Venkataraman, A., Evans, K.C., Lazar, S.W., & Buckner, R.L. (2010). Intrinsic functional connectivity as a tool for human connectomics: Theory, properties, and optimization. *Journal of Neurophysiology*, 103(1), 297–321.
- Vincent, J.L., Kahn, I., Snyder, A.Z., Raichle, M.E., & Buckner, R.L. (2008). Evidence for a frontoparietal control system revealed by intrinsic functional connectivity. *Journal of Neurophysiology*, 100(6), 3328–3342.
- Wang, X., Foryt, P., Ochs, R., Chung, J., Wu, Y., Parrish, T., & Ragin, A.B. (2011). Abnormalities in resting-state functional connectivity in early human immunodeficiency virus infection. *Brain Connectivity*, 1(3), 207–217.
- Wilkinson, G.S., & Robertson, G.J. (2006). *WRAT 4* (4th ed.). Lutz, FL: Psychological Assessment Resources, Inc.
- Wilson, T.W., Fox, H.S., Robertson, K.R., Sandkovsky, U., O'Neill, J., Heinrichs-Graham, E., ... Swindells, S. (2013). Abnormal MEG oscillatory activity during visual processing in the prefrontal cortices and frontal eye-fields of the aging HIV brain. *PLoS One*, 8(6), e66241.
- Wilson, T.W., Heinrichs-Graham, E., Robertson, K.R., Sandkovsky, U., O'Neill, J., Knott, N.L., ... Swindells, S. (2013). Functional brain abnormalities during finger-tapping in HIV-infected older adults: A magnetoencephalography study. *J Neuroimmune Pharmacology*, 8(4), 965–974.
- Woods, S.P., Moore, D.J., Weber, E., & Grant, I. (2009). Cognitive neuropsychology of HIV-associated neurocognitive disorders. *Neuropsychology Review*, 19(2), 152–168.