

ILLUSTRATIONS OF THE IPA

Ende

Kate L. Lindsey 

Boston University
klindsey@bu.edu

Ende (ISO639-3 code: kit) is a Pahoturi River language spoken by at least 600 (Eberhard, Simons & Fennig 2019) and as many as 1000 (Dareda 2016) people in Western Province, Papua New Guinea, primarily in the villages of Limol, Malam, and Kinkin, as shown in Figure 1. The Pahoturi River family, which also includes the Agob, Em, Idi, Kawam, and Taeme language varieties, has not yet been demonstrated to be related to any other language family and is thus classified as Papuan due to its geographical location. As with many languages in the region, the name of the language, *Ende* /ende/ [ʔende], is the Ende word meaning ‘what’.

Multilingualism is common among Ende speakers, arising from a sister-exchange marriage tradition, which results in many women and men marrying into the community from other linguistic backgrounds. In addition to one or more neighboring local languages, especially Taeme and Kawam, many Ende speakers also speak English, which is the regional *lingua franca* used in education and religion. Tok Pisin is a lesser-known contact language and is primarily spoken by people who have spent time outside of southern Western Province. In Limol, Ende is the primary language in most domains of interaction except for schooling, which is conducted in both English and Ende at the elementary level and solely in English afterward.

The data for this illustration were collected in Limol village between 2015 and 2018. To illustrate the diverse range of Ende speech, I analyzed the speech of 16 Ende speakers¹ (for demographic information, see Lindsey 2019: 146). This sample is balanced in terms of gender (eight men and eight women) and age (four speakers each under 30, 30–45, 46–61, and 62 and older). The phonetic analysis of the consonants and vowels, as described below, was based primarily on these recordings, in supplementation with 11 months of community observation and ongoing analysis of the Ende Language Corpus (Lindsey 2015).

All of the examples of the Ende language in this illustration are represented in writing in three ways: an orthographic² representation (in *italics*), a phonemic transcription (in /slashes/), and a narrow phonetic transcription of the accompanying audio recording (in [brackets]).

¹ These speakers are listed here alongside the data that they contributed, which can be accessed through the references: Paine Kurupel (P. Kurupel 2018), Donae Kurupel (D. Kurupel 2018), Sarbi Kurupel (S. Kurupel 2018), Karea Mado (Mado 2018), Warama Kurupel (Suwede) (Kurupel (Suwede) 2018a, b), Kaoga Dobola (Dobola 2018), Kwale Geser (K. Geser 2018), Wagiba Geser (W. Geser 2018a, b, c), Tonny (Tonzah) Warama (T. Warama 2018a, b), Jerry Dareda (Dareda 2018), Gloria Warama (Kurupel) (Warama (Kurupel) 2018), Namaya Karea (Karea 2018), Wendy Frank (Frank 2018), Winson Warama (W. Warama 2018), Maryanne Sowati (Kurupel) (Sowati (Kurupel) 2018), and Andrew Kaoga (Dobola) (Kaoga (Dobola) 2018a).

² The Ende orthography was developed by the Ende Language Project, namely Ende speakers Warama Kurupel (Suwede), Wagiba Geser, and Tonny (Tonzah) Warama in collaboration with the Lewada Bible Translation Center. Many graphemes represent their homologous counterparts in the International Phonetic Alphabet, but non-transparent graphemes may be converted as follows: <a> /e/, <ä> /ɛ/, <i> /ə/, <dd> /d̪d̪/, <ll> /l/, <ng> /ŋ/, <ny> /ɲ/, <r> /r/, <tt> /t̪s/, <y> /j/. The grapheme <e> represents both the phoneme /e/ and post-vocalic /j/.

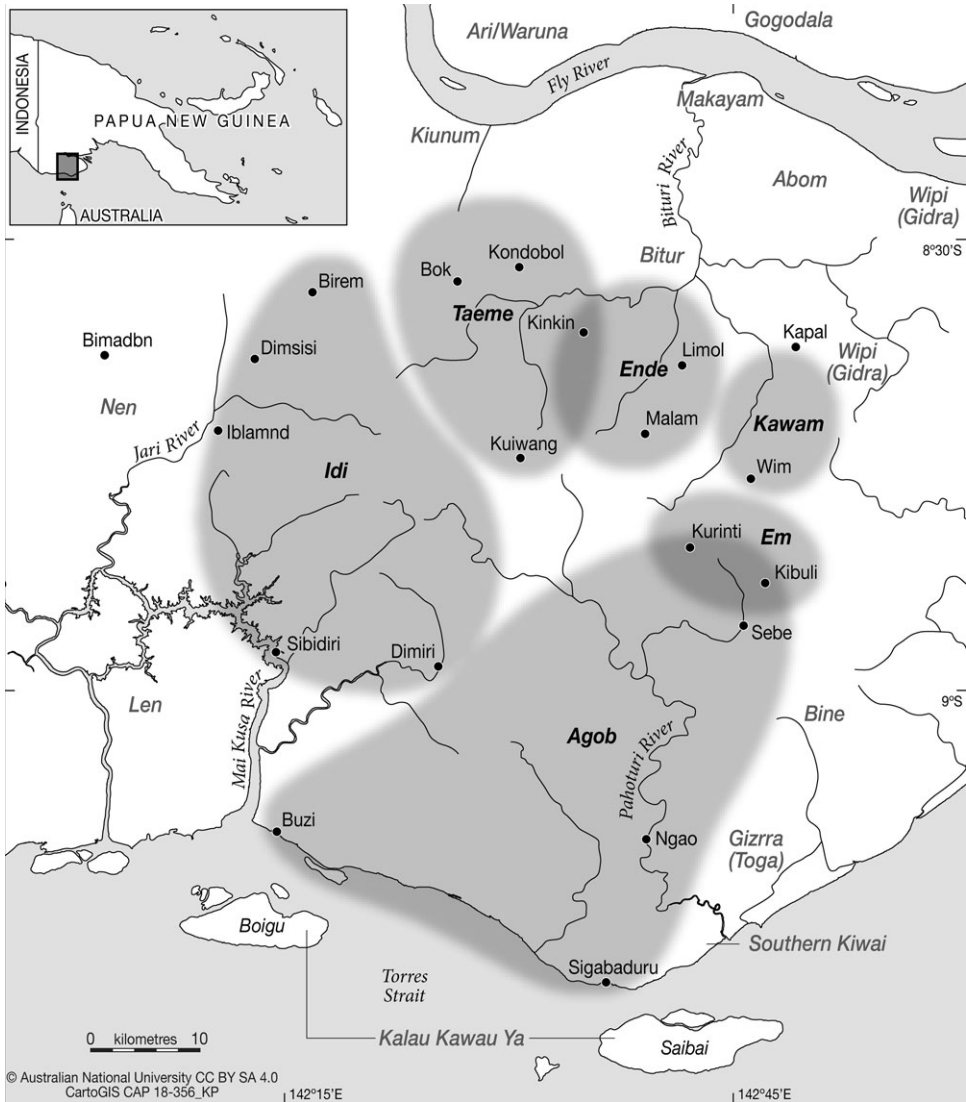


Figure 1 South Fly villages with predominant Pahoturi River speaker populations.

Consonants

	Bilabial	Alveolar	Retroflex	Palatal	Velar	(Labial velar)
Plosive	p b	t d			k g	
Affricate			ʈ ɖ			
Nasal	m	n		ɲ	ŋ	
Fricative		s z				
Tap or flap		r	ɽ			
Approximant				j		w
Lateral approximant		l				

There are 19 phonemic consonants in Ende. In the table above, a symbol from the International Phonetic Alphabet was chosen to symbolize each phonemic category. Each category represents a wide range of inter- and intra-speaker phonetic variation, which will be described in this article. For example, the voiceless retroflex affricate symbol /tʂ/ represents the phonemic category that is expressed by a range of phonetic realizations including [tʂ], but also a postalveolar [tʂ̠], a postalveolar [tʂ̡], or even a non-affricated [t].

The tables below present each consonant in word-initial, word-medial, and word-final positions in near-minimal pairs. To the greatest extent possible, each consonant is preceded or followed by the low, central vowel /ɐ/ (transcribed throughout this paper with the symbol for the low-front vowel /a/ for readability).

Consonants in word-initial position

PHONEME	PHONEMIC [PHONETIC]	ORTHOGRAPHIC	GLOSS
p	pa	<i>pa</i>	‘bird’
b	bab	<i>bab</i>	‘yam type’
t	tatu	<i>tatu</i>	‘wash’
d	dada	<i>dada</i>	‘older sibling’
k	kab	<i>kab</i>	‘rope’
g	gaguma [gɑʊʉma]	<i>gaguma</i>	‘yamhouse’
tʂ	tʂam	<i>ttam</i>	‘leaf’
ʈʂ	ʈʂapaɾ	<i>ddapall</i>	‘sky’
m	ma	<i>ma</i>	‘house’
n	nag	<i>nag</i>	‘friend’
ɲ	ɲaŋ	<i>nyäng</i>	‘bag’
ŋ	ŋam	<i>ngam</i>	‘breast’
s	sana [sanʌ]	<i>sana</i>	‘sago’
z	za	<i>za</i>	‘thing’
r ³	ruriruri	<i>ruriruri</i>	‘earthquake’
ɾ	ɾa	<i>lla</i>	‘person’
l	laimnin	<i>laemnin</i>	‘argue’
j	jaj	<i>yae</i>	‘mother’
w	waɾe	<i>walle</i>	‘river’

³ Marginal: very few words begin with /r/ in Ende.

Consonants in word-medial position

PHONEME	PHONEMIC [PHONETIC]	ORTHOGRAPHIC	GLOSS
p	papa	<i>papa</i>	'hit'
b	baba	<i>baba</i>	'father'
t	matamata	<i>matamata</i>	'tree type'
d	adawaṭṣa [ʔadawaṭṣa]	<i>adawatta</i>	'because'
k	kakab	<i>kakab</i>	'leftover'
g	daga [daga]	<i>daga</i>	'tree type'
ṭṣ	maṭṣa	<i>matta</i>	'shoulder'
ḏṛ	kiadṛaḏṛa	<i>kiyaddadda</i>	'bird type'
m	mamamamaŋ	<i>mamamang</i>	'pink'
n	sana	<i>sana</i>	'sago
ɲ	papa	<i>panya</i>	'pineapple'
ŋ	kilikilianjaŋ	<i>kilikiliangae</i>	'happily'
s	masar	<i>masar</i>	'grandfather'
z	zazaba	<i>zazaba</i>	'bag type'
r	para	<i>para</i>	'challenge'
ɽ	maɽa	<i>malla</i>	'not'
l	malam	<i>malam</i>	'obey'
j	aja	<i>aya</i>	'who'
w	bawa	<i>bawa</i>	'rainy season'

Consonants in word-final position

PHONEME	PHONEMIC [PHONETIC]	ORTHOGRAPHIC	GLOSS
p	tap [tap̄]	<i>tap</i>	'yam type'
b	tab	<i>tab</i>	'promise'
t	pat	<i>pat</i>	'taro type'
d	omad	<i>omad</i>	'friend'
k	kak	<i>kak</i>	'grandmother'
g	ag	<i>ag</i>	'morning'
ṭṣ	ṭṣaṭṣ [tʃætʃ]	<i>ttatt</i>	'jaw'
ḏṛ	ḏṛaḏṛ [ḏṛaḏ]	<i>ddadd</i>	'tree type'

m	mamam	<i>mamam</i>	‘red’
n	tan	<i>tan</i>	‘broom’
ɲ	aɲ	<i>any</i>	‘something’
ŋ	mamamamaŋ	<i>mamamamang</i>	‘pink’
s	as [ʔas]	<i>as</i>	‘banana type’
z	ziz	<i>ziz</i>	‘insect’
ɾ	masar	<i>masar</i>	‘grandfather’
ɽ	[s̠aɽ [t̠aɽ]	<i>ttall</i>	‘wallaby’
l	jal	<i>yal</i>	‘tree type’
j	naj	<i>nae</i>	‘sweet potato’
w	aw [aʊ]	<i>ao</i>	‘yes’

Plosives

Voiced and voiceless plosives contrast at the bilabial, alveolar, and velar places of articulation. (Note that retroflex/postalveolar plosives occur in the data and are analyzed as allophones of the retroflex affricates, see below.) The voiceless plosive /t/ is consistently articulated with the tongue behind the teeth but appears to vary between a dental (apical) or alveolar (laminal) articulation.

The voiceless plosives and affricates have short voice onset times (VOTs) in word-initial position, indicating very minimal aspiration for /p/ and /t/ and light aspiration for /k/. On the other hand, the voiced plosives and affricates feature considerable prevoicing in word-initial position. This two-way laryngeal contrast classifies Ende as a ‘true voice’ language, like Russian, French, Dutch, or Hungarian (Ringen & Kulikov 2012: 270).

Prevoicing durations for voiced plosives vary greatly across tokens. An analysis of voice onset times across 18 words as spoken by four speakers three times each (N = 216) revealed that VOTs of voiceless plosives (measured from the burst release to the onset of voicing of the vowel) exhibit less variation than VOTs of voiced plosives (measured from the onset of voicing to the burst release), see standard deviation values in Table 1.

Table 1 Mean voice onset times for plosives.

Phoneme	Mean (ms)	Standard deviation	N
p	18.5	6.29	36
t	19.3	5.19	36
k	42.0	17.15	36
b	-106.9	40.90	36
d	-93.9	28.20	36
g	-89.6	37.30	36

However, although the duration of prevoicing varies greatly before voiced plosives, this variation is also observed within tokens of the same word (e.g. for *bawa* ‘rainy season’, max = -187 ms and min = -73 ms, see Figures 2 and 3). Thus, although the phonetic variation is stark, there is no evidence for a phonemic contrast in VOT length. Also notable in the VOT of Figure 3, is a complex waveform and formant structure – characteristics of prenasalization or ‘nasal venting’ (Kharlamov 2018: 216).

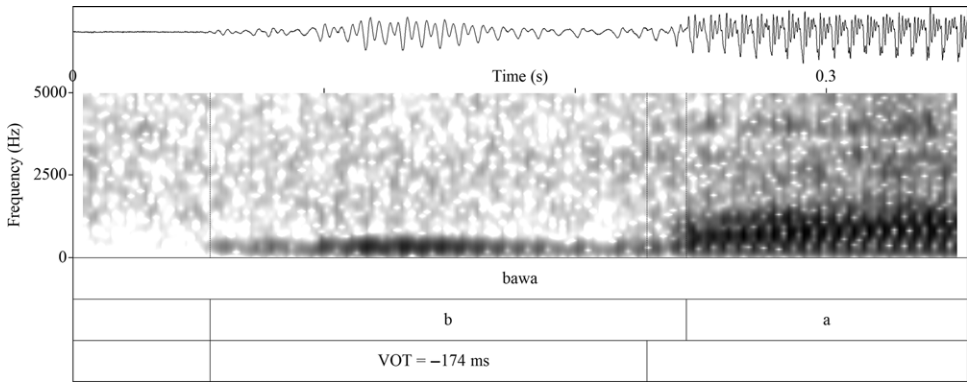


Figure 2 Voice onset time of /b/ in *bawa* 'rainy season', -174 ms (D. Kurupel 2018: 41).

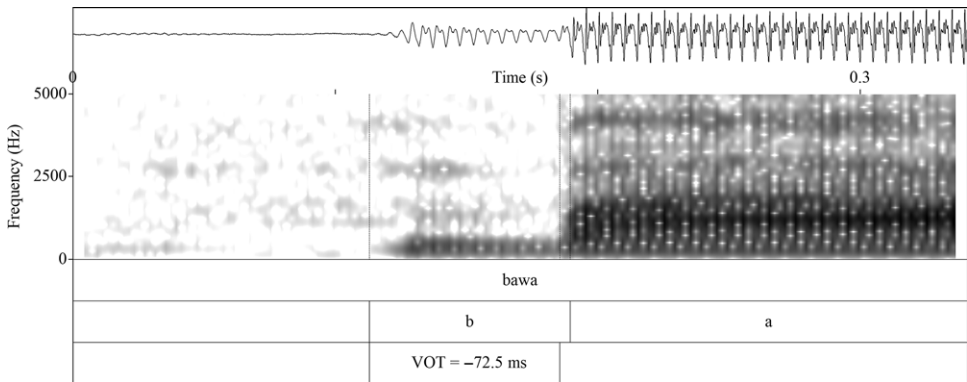


Figure 3 Voice onset time of /b/ in *bawa* 'rainy season', -72.5 ms (Frank 2018: 41).

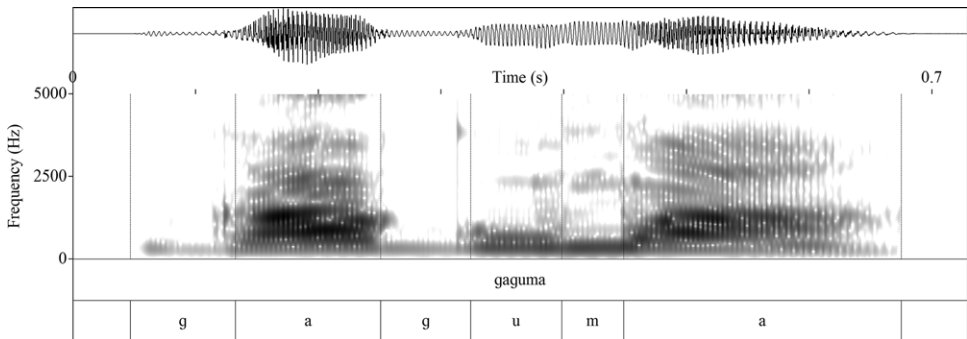


Figure 4 Stopped variant of intervocalic /g/ (P. Kurupel 2018).

All six plosive phonemes occur in word-initial, word-medial, and word-final positions though the voiceless phonemes are more frequent, especially word-finally. In intervocalic positions, voiced plosives are variably lenited. Compare *gaguma* /gaguma/ 'yamhouse' in Figure 4 (stopped: [gaguma]) and Figure 5 (lenited: [gauɰuma]).

In final position, consonants are often released with an anaptyctic vowel of central quality (e.g. *käp* /kʌp/ [kʌpʌ] 'fruit' and *gwem* /gwem/ [gwemʌ] 'river part').

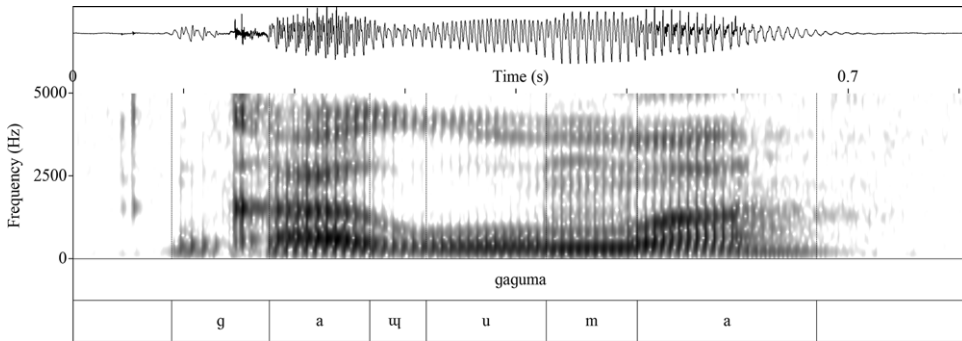


Figure 5 Lenited variant of intervocalic /g/ (Kaoga (Dobola) 2018a).

Notable absences from the plosive inventory include the labial-velar plosives present in other Pahoturi River languages, such as Idi ($\widehat{kw} \sim \widehat{kp}^w \widehat{gb}^w$), and Yam languages such as Nmbo and Nen ($\widehat{kp}^w \widehat{gb}^w$; Evans & Miller 2016, Ellison et al. 2017). Ende cognates with Idi words that begin with $\widehat{kw} \sim \widehat{kp}^w \widehat{gb}^w$ are realized as /k g/ and are often (but not always) followed by a rounded vowel.

There are a limited number of words in the Ende lexicon that include onsets with /kw/ or /gw/, such as *kwi* ‘island’ and *gwem* ‘river part’. This sequence is never followed by a rounded vowel. One could analyze these /kw/ and /gw/ sequences as monosegmental phonemes (/k^w/ and /g^w/) or as sequences of phonemes, as I have done. Support for the complex onset hypothesis comes from the fact that Ende allows other complex onsets with plosives and glides. The bilabial plosives /p/ and /b/ can also precede /w/ in initial position. Moreover, plosives form complex onsets with the other phonemic glide /j/. Examples are shown in the table below.

Plosive-glide sequences in word-initial and word-medial positions

SEQUENCE	PHONEMIC [PHONETIC]	ORTHOGRAPHIC	GLOSS
kw	kwi	<i>kui</i>	‘island’
gw	gwem [gwɛmɒ]	<i>guem</i>	‘river part’
pw	pwapwa	<i>puapua</i>	‘light’
pw	pwikme [pwikɒme]	<i>puikme</i>	‘lizard type’
bw	bwitu	<i>buitu</i>	‘stick’
bw	bwidʒɛ [bwidʒɛ]	<i>buidde</i>	‘tool type’
bw	sambwag	<i>sambuag</i>	‘prawn’
kj	kjakja	<i>kyakya</i>	‘bird type’
bj	pimbjom	<i>pimbyom</i>	‘bark type’

For now, I will analyze /kw/, /gw/, /pw/, /bw/, /kj/, and /bj/ as complex onsets, although they may have a monosegmental origin.

Ende’s plosive inventory also differs from related Idi and nearby Yam languages, such as Nmbo, Nen (Evans & Miller 2016), Nama, and Ngkolmpu (Carroll 2016), in that while linguists report voiced prenasalized plosives (/^mb ⁿd ^ŋg ^ŋgb^w/) for Idi, Nmbo, Nen, and Nama, and voiceless prenasalized obstruents (/^mp ^{nt} ^ŋk ^{ns}/) for Ngkolmpu, I do not report any

prenasalized phonemes in Ende's inventory. I hesitate to distinguish Ende in this way because the candidates for prenasalized phonemes in Ende (/mp mb nt nd ŋk ŋg nŋ̃ nḏ̃z, ns nz/) appear to be both phonetically and phonotactically similar to the 'prenasalized consonants' reported in Idi, Nmbo, and Nen. However, the distribution and behavior of these candidates do not provide adequate evidence for rejecting the hypothesis that they are sequences of phonemes, as has been done for languages with substantiated phonemic prenasalization, such as nearby Komnzo (Döhler 2018), Ngkolmpu (Carroll 2016), and Coastal Marind (Olsson 2017).

The following tables illustrate these nasal–obstruent sequences in word-medial and word-final position with a preceding or following low, central /ɐ/. These sequences do not appear contrastively in word-initial position, although several experts have noted that the significant prevoicing of some voiced obstruents sounds in word-initial positions contains complex waveforms and formant structure: evidence of prenasalization.

Nasal–obstruent sequences in word-medial position

SEQUENCE	PHONEMIC [PHONETIC]	ORTHOGRAPHIC	GLOSS
mp	dompa [domp̃a]	<i>dompa</i>	'spear type'
mb	amba [amb̃ʌ]	<i>amba</i>	'tree type'
nt	tantep̃	<i>tanteny</i>	'tree type'
nd	panda	<i>panda</i>	'tree type'
ŋk	daŋkam	<i>dangkam</i>	'I leaned'
ŋg	saŋga	<i>sangga</i>	'bird type'
nŋ̃	wanŋ̃sawanŋ̃sa [wanŋ̃sawanŋ̃sa]	<i>wanttawantta</i>	'game type'
nḏ̃z	ḏ̃zɔ̃nḏ̃zɔ̃	<i>ddonddo</i>	'to be proud'
ns	nanserbe	<i>nanserbe</i>	'I prepared'
nz	ŋanzig [ŋanz̃ig]	<i>nganzig</i>	'to overtake'

Nasal–obstruent sequences in word-final position

SEQUENCE	PHONEMIC [PHONETIC]	ORTHOGRAPHIC	GLOSS
mb	bʌnamb	<i>bänamb</i>	'to open'
nd	band	<i>band</i>	'tree type'
ŋk ⁴	nʌŋk	<i>nängk</i>	'take (it) off'
ŋg	penaŋg	<i>penangg</i>	'to burn'
nḏ̃z	mʌnḏ̃zʌmʌnḏ̃z [mʌnḏ̃zʌmʌnḏ̃z]	<i>mänddmändd</i>	'to drown'
nz	bʌnz [bʌnzʌ]	<i>bänz</i>	'mosquito'

⁴ Marginal: very few words end with nasal-obstruent sequences in which the final consonant is voiceless.

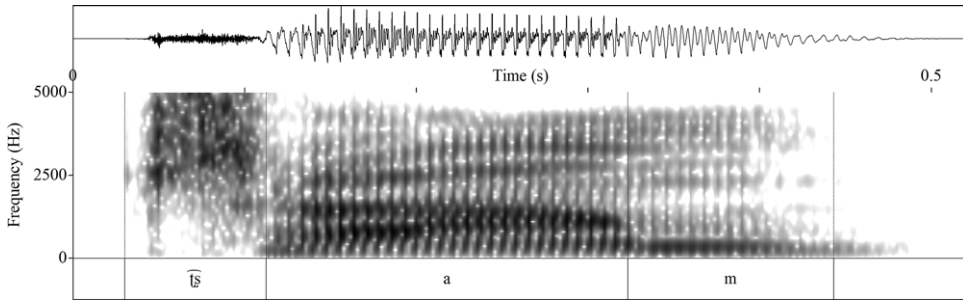


Figure 6 Spectrogram of *ttam* ‘leaf’ with characteristic low F3 dip (2153 Hz) during the transition from the plosive (Kaoga (Dobola) 2018a).

Affricates and fricatives

There are two retroflex affricates, $\widehat{tʃ}$ and $\widehat{dʒ}$, and two alveolar fricatives, /s/ and /z/. The voiced affricates and fricatives are fully voiced in all positions, often with significant prevoicing, as detailed earlier for the voiced plosives.

Retroflex obstruents are atypical of Papuan languages in general (Foley 2000) and bring more to mind languages further south in Australia (Evans 2012). Regionally, retroflex obstruents are more common. They can be found in all Pahoturi River languages, except perhaps Kawam, in which they have been replaced by palatal fricatives (Badu 2018). Retroflex plosives can also be reconstructed for the Yam family (Evans, Carroll & Döhler 2017). These retroflex affricates can be found in all positions of the syllable and the word. The degree of retroflexion apparent in acoustic analyses is weak. Further articulatory evidence is necessary for saying anything more specific about the shape of the tongue for these sounds. The retroflexes are notably distinguished from $\widehat{tʃ}$ (found in loanwords, such as *change*, *church*, *teacher*, and *chip* ‘chief’) and $\widehat{dʒ}$ (an allophonic variant of /z/, and found in loanwords such as *pidgin* ‘Tok Pisin’).

The retroflex affricates undergo considerable allophonic variation, both in manner and place. With regards to manner, the corpus includes numerous examples of the affricates being realized as plosives or as fronted fricatives (e.g. listen to the fronted [ʒ] or [ʒ̟] in *ddone* / $\widehat{dʒ}ɔnɔ$ / [ʒɔnɔ] ‘no’ and *kumuddäga* / $\widehat{kumu}dʒʌga$ / [kumʒʌga] ‘three’ as spoken by Wendy Frank, Ende woman, age 28). A variationist analysis of retroflex affricate tokens within recordings of natural speech demonstrates that these retroflex consonants are more likely to be realized as plosives when produced by speakers who perform *kawa*, a prestigious style of oration within the Ende community (Strong, Lindsey & Drager 2020). Strong and colleagues go on to show that among the orators, older speakers and women are more likely to produce these consonants as plosives compared with younger speakers and men.

With regards to place, these affricates vary from a retroflex articulation with expected low third formant (F3) values transitioning into the plosive (see Figure 6 and listen to *ttam* / $\widehat{tʃ}sam$ / ‘leaf’, *ddapall* / $\widehat{dʒ}apal$ / ‘sky’, *wanttawantta* / $\widehat{wantʃ}awantʃa$ / ‘game type’, and *ddondo* / $\widehat{dʒ}ɔndʒɔ$ / ‘to boast’), and a postalveolar without any F3 dips (e.g. [tʃ̠], see Figure 7), sometimes even with hints of a postalveolar rhotic (like in the English *tree* [t̠ri]). Informal observations indicate that younger women are producing more fronted variants than their older or male counterparts, suggesting this may be a change in progress.

There are two fricatives /s/ and /z/. Both are comparatively rare phonemes within the corpus. The phoneme represented as /z/ exhibits considerable phonetic variation, which has been observed for this phoneme across the southern New Guinea region. In Ende, /z/ is variably realized as an alveolar fricative [z], an alveolar affricate [dʒ̠], a retracted alveolar

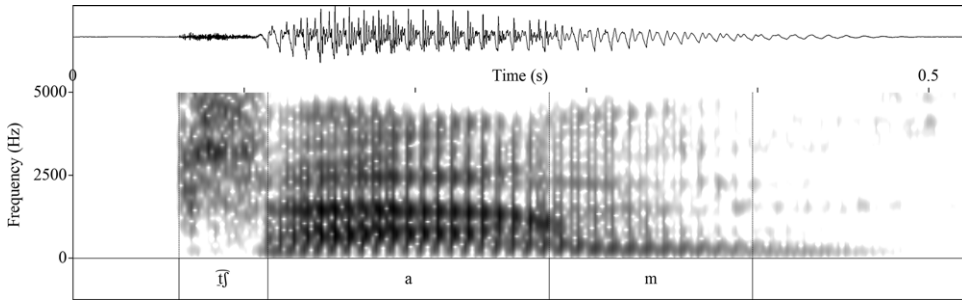


Figure 7 Spectrogram of *ttam* 'leaf' with stable F3 (2399 Hz) in the transition from the plosive (Kaoga (Dobola) 2018a).

affricate [d̪z̪], a retracted alveolar fricative [z̪], or a postalveolar affricate [d̪ʒ̪]. Thus, the word /pazi/ 'year' can be pronounced in at least five different ways. More articulatory data is needed.

Variable pronunciations of /pazi/

ALLOPHONE	PHONETIC	ORTHOGRAPHIC	GLOSS	SPEAKER	REFERENCE
z	[pazi]	<i>pazi</i>	'year'	MSK	(Sowati (Kurupel) 2018)
d̪z̪	[pad̪zi]	<i>pazi</i>	'year'	NKK	(Karea 2018)
d̪ʒ̪	[pad̪zi]	<i>pazi</i>	'year'	GWK	(Warama (Kurupel) 2018)
z̪	[pazi]	<i>pazi</i>	'year'	TTW	(T. Warama 2018a)
d̪ʒ̪	[pad̪zi]	<i>pazi</i>	'year'	KMM	(Mado 2018)

Nasals

Nasals contrast at four places of articulation: bilabial, alveolar, palatal, and velar. The palatal and velar nasals are atypical for non-Austronesian languages in New Guinea (Foley 2000) but common in Austronesian (Blust 2013). This set of nasals can be found in all Pahoturi River languages. Nasal consonants can be found in all positions of the word and syllable. Velar nasals undergo optional deletion in word-initial position.

Liquids

The Ende inventory includes three liquids: an alveolar tap /r/, a retroflex flap /ɽ/, and an alveolar lateral approximant /l/. Ende lacks the palatal lateral approximant /ʎ/ found in Idi and Taeme, which is realized as /ɽ/ or /l/ in cognates (Evans, Lindsey & Schokkin 2019).

Unlike the other consonant categories, the liquid consonants are not evenly distributed across phonological contexts. Among the liquids, /ɽ/ is most common word-initially, inter-vocally, and word-finally, although /r/ approaches the count of /ɽ/ inter-vocally. The distribution of liquids is more similar in complex onsets and codas, although they are far more common in onsets than in codas. The counts in Table 2 are based on the 2017 Ende dictionary, which included approximately 5000 words.

As with the retroflex affricates, the retroflex flap also often has weak retroflexion in its articulation. The following figures provide a near-minimal triplet contrasting intervocalic /ɽ/ with clear retroflexion (Figure 8), less-clear retroflexion (Figure 9), and the alveolar tap (Figure 10).

Table 2 Distribution of liquids across phonological contexts.

Liquid	Word-initial	Intervocalic	Word-final	Onset cluster	Coda cluster	Total
/ɽ/	114 (15.7%)	348 (48.0%)	220 (30.3%)	41 (5.7%)	2 (0.3%)	725
/r/	17 (3.3%)	298 (58.3%)	147 (28.8%)	48 (9.4%)	1 (0.2%)	511
/l/	26 (7.9%)	131 (39.8%)	145 (44.1%)	24 (7.3%)	3 (0.9%)	329

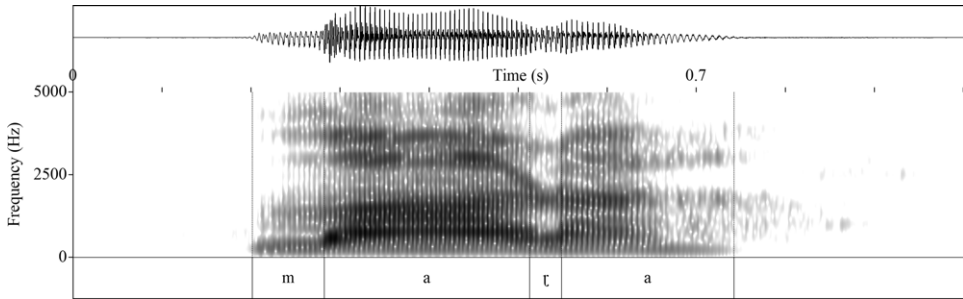


Figure 8 Spectrogram of *malla* ‘not’ with a clear F3 dip before the retroflex flap (Warama (Kurupel) 2018).

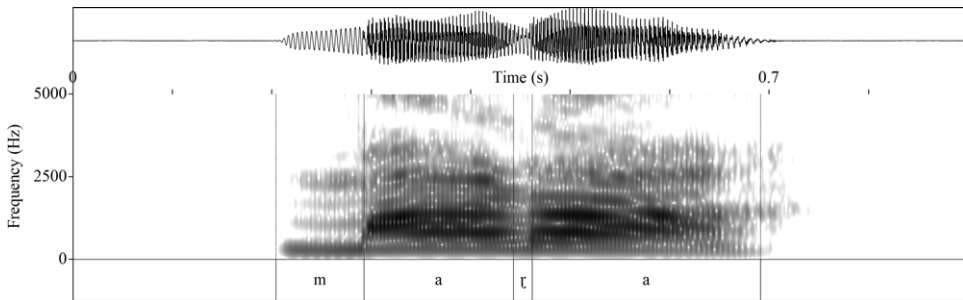


Figure 9 Spectrogram of *malla* ‘not’ with stable F3 contour before the retroflex flap (P. Kurupel 2018).

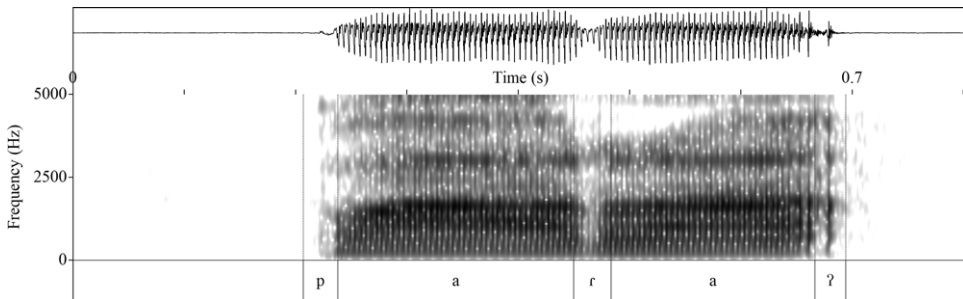


Figure 10 Spectrogram of *para* ‘yam-counting ceremony’ with no apparent F3 dip before the alveolar tap (Frank 2018).

Glides

There are two glides or semi-vowels in the Ende consonant inventory: /w/ and /j/. These glides occur in word-initial and syllable-initial positions, as illustrated with contrastive minimal pairs in the tables below. In word-final position, speakers prefer to write these sequences of vowel and glide as diphthongs (e.g. *ao* /aw/ [aʊ] ‘yes’ and *mae* /maj/ [maə] ‘sago type’). However, they behave like word-final consonants in cliticization contexts.

Glides in word-initial position with minimal pairs

PHONEME	PHONEMIC [PHONETIC]	ORTHOGRAPHIC	GLOSS
w	wap [uap]	wap	'stick'
	ap [ʔap̄]	ap	'savannah'
j	jure	yure	'sago type'
	uʔe	ulle	'big'

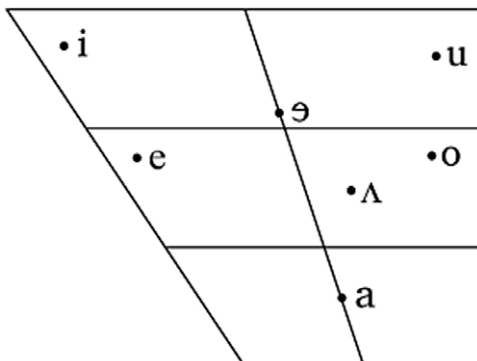
Glides in inter-vocalic position with minimal pairs

PHONEME	PHONEMIC [PHONETIC]	ORTHOGRAPHIC	GLOSS
w	bawa [bawaʔ]	bawa	'rainy season'
	baba	baba	'father'
j	aja	aya	'who'
	aʔa	alla	'how'

Glides in word-final position with minimal pairs

PHONEME	PHONEMIC [PHONETIC]	ORTHOGRAPHIC	GLOSS
w	aw [aʔ]	ao	'yes'
	a [aʔ]	a	'and'
j	maj [maə]	mae	'sago type'
	ma	ma	'house'

These glides are also used epenthetically. Their epenthetic function is to provide onsets to words beginning in non-low vowels and to break up vowel sequences. Typically, the front glide precedes word-initial front vowels /i/ and /e/, while the back glide precedes word-initial back vowels /o/ and /u/.

Vowels

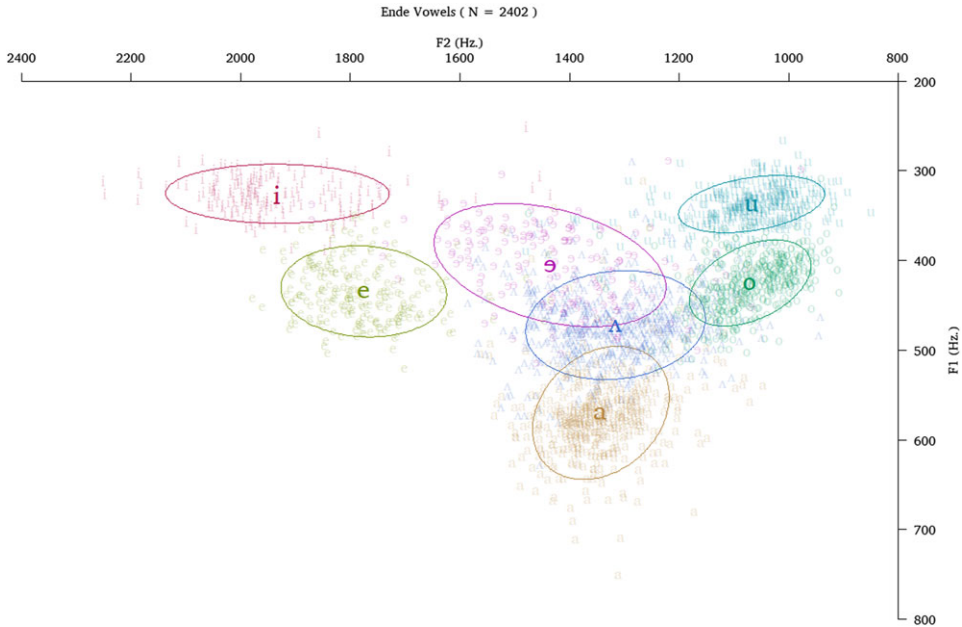


Figure 11 (Colour online) Plot of normalized F1 versus F2 values of 2402 vowel tokens of 17 speakers (small vowel symbols). Ellipses indicate a 95% confidence interval variance from the mean (large vowel symbol).

Vowels in word-medial position

PHONEME	PHONEMIC [PHONETIC]	ORTHOGRAPHIC	GLOSS
i	bin	<i>bin</i>	‘name’
e	bem	<i>bem</i>	‘sea’
a	baba	<i>baba</i>	‘father’
o	bodo	<i>bodo</i>	‘full’
u	bun [bunʌ]	<i>bun</i>	‘head’
ə	bətbət	<i>bītbit</i>	‘black’
ʌ	bʌnz [bʌnzʌ]	<i>bānz</i>	‘mosquito’

Ende has seven phonemic vowel qualities, including five peripheral vowels /i e a o u/ and two central vowels /ə ʌ/. The placement of the vowels in the vowel diagram above is approximated from the plot in Figure 11, in which the normalized F1/F2 measurements of 2402 vowel tokens spoken by 17 speakers (aforementioned 16 speakers with supplemental recordings from Musato Giwo (Giwo 2016)) are plotted. The plot below was made using the *phonR* package (McCloy 2016).

Ende’s vowel inventory stands out in the Pahoturi River family because it has only one low open vowel /a/, while all other Pahoturi River varieties have two /æ/ and /a/.

The central vowels /ə/ and especially /ʌ/ have quite broad distributions throughout the center of the vowel space. The vowel represented by /ə/ is higher (closer) than both /e/ and /o/

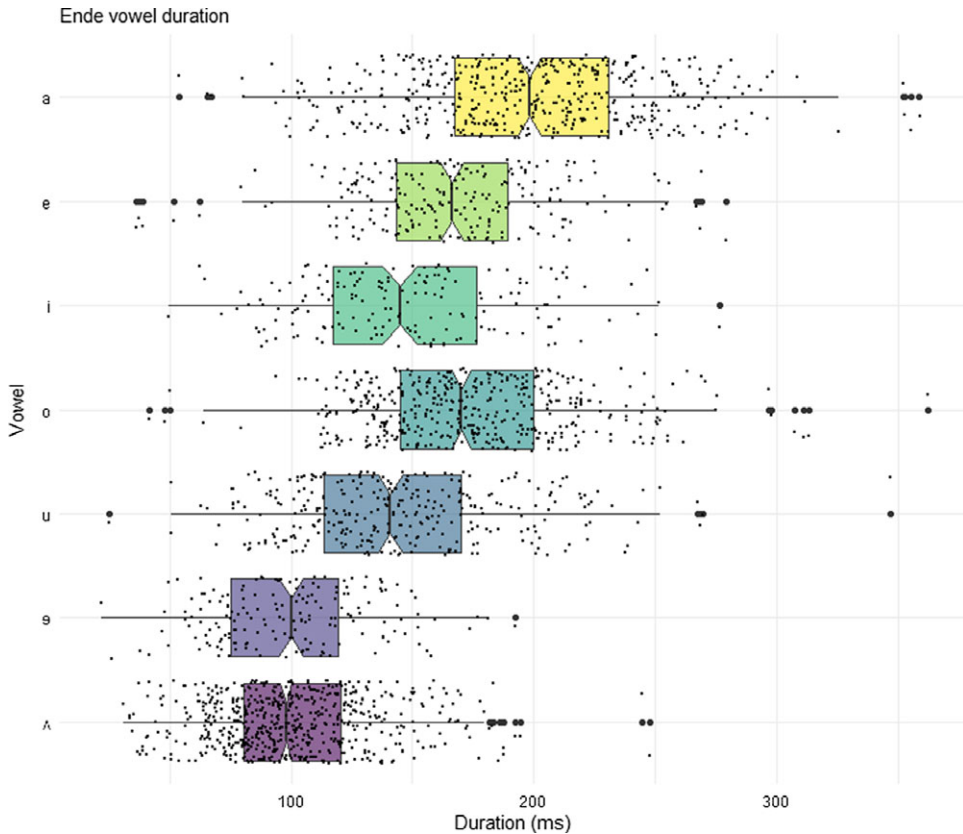


Figure 12 (Colour online) Plot of duration values of 2402 vowel tokens of 17 speakers.

and participates as a high vowel in height-based vowel harmony (Lindsey 2019: 190). For this reason, I chose the symbol for the near-close, non-rounded vowel, /ə/. An alternative symbol would be /i/.

The vowel represented by the symbol /ʌ/ is distributed somewhat lower (more open) than /e/ and /o/ but participates as a mid vowel in height-based vowel harmony. The vowel's distribution is central, not back, and also serves as a catch-all epenthetic, central vowel. For this reason, I chose the /ʌ/ symbol, although /ə/ may also be an appropriate choice.

Moreover, this analysis reveals a resemblance between the central vowels of Ende and the central vowels of nearby Nen (Evans & Miller 2016). In both languages, /ə/ and /ʌ/ can neither begin nor end words (except as anaptyctic vowels) but do contrast minimally with one another and with the peripheral vowels.

The central vowels also differ from the peripheral vowels in terms of length. As shown in Figure 12, the central vowels /ə/ and /ʌ/ are the shortest on average, followed by the high vowels /i/ and /u/, the mid vowels /e/ and /o/ and the low vowel /a/. In this plot, the notches display a confidence interval around the median values, the boxes represent the mid 50% of the data, the whiskers represent the minimum and maximum values, while the dots outside the whiskers represent statistical outlier values.

Note that vowels in word-initial and word-final positions are often preceded or followed by an audible glottal stop. Compare the two tokens of the word *aya* /aja/ in Figure 13, in which the first token features a smooth vowel onset, while the second token has an abrupt onset (glottal stop); both also end in a glottal stop.

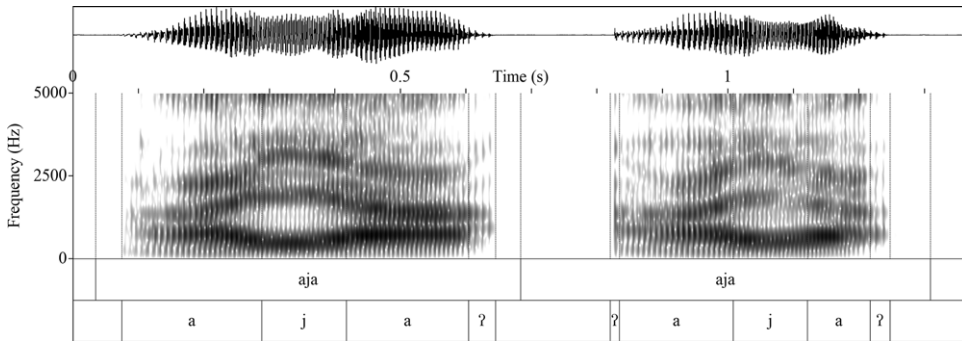


Figure 13 Two tokens of *aja* /*aja*/ without and with an initial glottal stop (Dareda 2018).

One vowel process of note is vowel harmony. Ende vowel harmony is progressive, can be triggered by prefixes, and following vowels alternate to harmonize in height (high or mid) with the preceding vowel (Lindsey 2019: 190). In this way, we observe alternations between /i ~ e/, /u ~ o/, and /ə ~ ʌ/. The low vowel /a/ blocks progressive vowel harmony.

Prosody

Ende does not have lexical stress or tone. There are no words in the current lexicon that minimally contrast by something like stress, and tonelessness is a typological feature of the region (Evans et al. 2018: 738).

Intonational frames are poorly understood in the language. Questions do not systematically end in a rising tune and are often falling, even though word order does not always indicate whether or not the utterance is a question or a statement. One interesting use of intonation is the Call-at-Distance form. This form is similar to the Nungon Call-at-Distance form observed by Sarvasy (2017a: 106–109; 2017b) and is used whenever the speaker is at a considerable distance or out of view from the intended recipient. The Call-at-Distance form is located at the end of an utterance and entails final vowel lengthening, the addition of /-o:/ or /-aj/, and a considerable rise in pitch and loudness, especially for questions (Jerry 2016a, b, c, d, e; W. Geser 2017). For example, the Call-at-Distance form for *mer ag* /mer ag/ ‘good morning’ is pronounced [mer ago:] at distance and *bongo ine ma we yaraʔe?* /boŋo ine ma we jaraʔe/ ‘did you go to the well?’ is pronounced [boŋo ine ma we jaraʔe aj] ‘did you go to the well?’ at distance.

Transcription of the recorded passage

The story of the North Wind and the Sun was translated into Ende by Andrew Kaoga (Dobola) (Kaoga (Dobola) 2018b). The text features some cultural adjustments; for instance, the North Wind is translated as *kāmag* /kʌmag/ ‘the West Wind’, and the warm cloak is substituted with a *labalaba* /labalaba/ ‘laplap, a piece of cloth tied around the waist’. The resulting story contains all phonemes except /ə/ and /z/. That is to say that this story represents 89.4% of the phoneme inventory. The text is also missing initial /i n ɲ s r/, medial /q̄z, ɲ/, and final /b t k q̄z s r w/. In summary, the text captures 43 of 57 or 75.4% of expected phoneme positions. The text is presented below in a broad phonemic translation and an interlinear text with orthographic representation, word-level glosses, and phrase-level free translations into English.

Kāmag a wa Yābād a (The West Wind and the Sun)

Andrew K. Dobola

Broad phonemic transcription

gudaj gudaj t̪ar̪ap me k̪amag a j̪ab̪ad a deʒagernejo t̪ʂoŋo jebdo me ubi oba maŋaɾ de
 gonɖʒonejo k̪amag ŋamo maŋaɾ a uɾe dan j̪ab̪ad eka mu daɖag̪an ɖʒone ŋamo ade maŋaɾ
 a uɾe dan t̪ʂoŋo t̪ar̪ap me ibiag a daɾn̪an bogo labalaba aɾe gokanew̪an k̪asre ada goʒeʒo
 da ajja labalaba de baŋk̪an̪an obo paɬʂ aɬʂ ede obo maŋaɾ a uɾe dan k̪amag aŋde obo wel
 de ŋaɬʂoŋ daɾn̪aŋ̪an diba ɾa pate daɾadoʒan duduweduduweŋaŋ ada oba obo labalaba de
 baŋk̪an̪an be ɖʒone daŋk̪an̪an d̪abe ɾa da obo labalaba de ɾok̪t̪ʂaŋaj daŋraŋ̪an k̪amag
 ɾaɬʂ goɖan̪ ada maɾa ŋana muɾɖaj dan k̪asre j̪ab̪ad gobergab̪an t̪ʂant̪ʂam pejaŋ j̪ab̪ad
 aŋde t̪ʂant̪ʂamaŋ abal gogon d̪abe ɾa da obo labalaba de daŋk̪an̪an t̪ʂant̪ʂam aɬʂa a
 memram a daɖag̪an. k̪amag kilimiŋ gogon adawaɬʂa j̪ab̪ad bo maŋaɾ a uɾe daja k̪amag
 ada gogon baŋe maŋaɾ a uɾe dan be ŋamo k̪asre dan

Interlinearized text

The abbreviations in this passage are as follows: > = acting upon; 3 = third person; ABL = ablative; ACC = accusative; ALL = allative; ANIM = animate; AUX = auxiliary; COP = copula; DU = dual; DUR = durative; FUT = future; INST = instrumental; LOC = locative; NOM = nominative; POSS = possessive; PRS = present; PST = past; REM = remote past; S = subject; SG = singular.

- (1) *Gudae gudae t̪ar̪ap me, K̪amag a Y̪äbäd a*
 old old time=LOC west.wind and sun=NOM
deyagerneyo.
 were living (live.REM.DUR.3DUS)
 ‘A long, long time ago, the West Wind and the Sun were living.’
- (2) *Ttongo yebdo me, ubi oba mäŋall de gonn̪doneyo.*
 one day=LOC they their strength=ACC were boasting (boast.REM.DUR.3DUS)
 ‘One day, they were boasting about their strength.’
- (3) *K̪amag: “Ngämo mäŋall a ulle dan.”*
 west.wind my strength=NOM big is (COP.PRS.SGS)
 ‘The West Wind said, “I am very strong.”’
- (4) *Y̪äbäd eka mu däɖag̪än, “Ddone, ngämo ade*
 sun reply did (AUX.REM.3SG>3SG) no my FOC
mäŋall a ulle dan.”
 strength=NOM big is (COP.PRS.SGS)
 ‘Sun replied, “No, I am stronger.”’
- (5) *Ttongo t̪ar̪ap me ibiag a dalln̪än.*
 one time=LOC traveller=NOM was walking (go.REM.DUR.3SGS)
 ‘At that time, a traveler was walking.’

- (6) *Bogo labalaba alle gokänewän.*
 he laplap=INST had covered himself (cover.REM.REFL.3SGS)
 ‘He had covered himself in a laplap.’
- (7) *Käsre ada gogeyo, da aeya*
 then like.this they went (AUX.REM.3DUS) if who
labalaba de bängkänän obo pätt att
 laplap=ACC removes it (remove.FUT.3SG>3SG) his body=ABL
ede obo mängall a ulle dan.
 so his strength=NOM big is (COP.PRS.SGS)
 ‘Then the two said, whoever can remove the laplap from the traveler’s body would be the strongest.’
- (8) *Kämag angde obo wel de ngattong*
 west.wind when his wind=ACC first
daerängän diba lla pate,
 tested his strength (test.REM.3SG>3SG) towards that man (that man=ANIM.ALL)
dapädoeyän duduweduduwemang ada obo
 he blew (blow.REM.3SG>3SG) very strongly like.this so as to
obo labalaba de bängkänän, be
 his laplap=ACC remove it (remove.FUT.3SG>3SG) but
ddone dängkänän.
 he didn’t remove it (not remove.REM.3SG>3SG)
 ‘First, the West Wind tested his strength, he blew and blew to remove the laplap, but he could not do it.’
- (9) *Däbe lla da obo labalaba de lloktangae damllamän.*
 that man=NOM his laplap=ACC strongly held it (hold.REM.3SG>3SG)
 ‘The man held onto his laplap very tightly.’
- (10) *Kämag llätt gogän ada, “Malla ngäna*
 west.wind stopped (stop AUX.REM.3SG) and said (like.this) not I
mulldae dan.”
 capable am (COP.PRS.SGS)
 ‘The West Wind gave up, saying, “I cannot do it.”’
- (11) *Käsre Yäbäd gobergabän ttänttäm peyang.*
 then sun shone out (shine.REM.3SGS) warmth=COM
 ‘Then the sun shone out with great warmth.’

- (12) *Yäbäd* *angde* *ttänttämang* *abal* *gogon,* *däbe*
 sun when warm very became (AUX.REM.3SGS) that
- lla da* *obo* *labalaba de* *dängkänän*
 man=NOM his laplap=ACC removed it (remove.REM.3SG>3SG)
- ttänttäm att a* *a* *memram a* *dägagän.*
 heat=ABL=NOM and sweat=NOM got him (AUX.REM.3SG>3SG)
- ‘When the Sun had become very hot, the man removed his laplap from the heat; he had started sweating.’
- (13) *Kämag a* *kiliminy* *gogon* *adawatta* *Yäbäd bo*
 west.wind=NOM unhappy became (AUX.REM.3SGS) because sun=3SG.POSS
- mängall a* *ulle* *daeya.*
 strength=NOM big was (COP.PST.SGS)
- ‘The West Wind was sad because the Sun was very strong.’
- (14) *Kämag* *ada gogon* “*Bäne* *mängall a* *ulle*
 west.wind said (like.this AUX.REM.3SGS) your strength=NOM big
- dan,* *be* *ngämo* *kälsre* *dan.*”
 is (COP.PRS.SGS) but mine (my) small is (COP.PRS.SGS)
- ‘The West Wind said, “You are stronger than me.”’

Acknowledgments

First and foremost, I acknowledge the Ende tribe of Limol and Malam villages for sharing their language with me. This research would not be possible without the generosity of the following speakers, who contributed audio recordings to the Ende Language Corpus: Jerry Dareda, Kaoga Dobola, Wendy Frank, Kwale Geser, Wagiba Geser, Musato Giwo, Namaya Karea, Andrew Kaoga (Dobola), Donae Kurupel, Paine Kurupel, Sarbi Kurupel, Warama Kurupel (Suwede), Karea Mado, Maryanne Sowati (Kurupel), Gloria Warama (Kurupel), Tonny (Tonzah) Warama, and Winson Warama. I am also very grateful for the insights and data shared with me by fellow Pahoturi River-ists Dineke Schokkin and Catherine Scanlon. Finally, I would like to thank Amalia Arvaniti, Marc Garellek, Eri Kashima, André Radtke, Marija Tabain, and three anonymous reviewers for their helpful comments and suggestions, which have greatly improved the quality of this paper. The fieldwork that made this data collection possible was sponsored by the Firebird Foundation for Anthropological Research, the American Philosophical Society, and the linguistics departments at Stanford University and Australian National University.

Supplementary material

To view supplementary material for this article (including audio files to accompany the language examples), please visit <https://doi.org/10.1017/S0025100320000389>.

References

- Badu, Sawapo. 2018. Proto PR Survey (Kawam) – Sawapo Badu. *LSNG08*.⁵ http://catalog.paradisec.org.au/collections/LSNG08/items/SK_EE007.
- Blust, Robert. 2013. *The Austronesian languages (Revised Edition)*. Canberra: Pacific Linguistics.
- Carroll, Matthew J. 2016. *The Ngkolmpu language with special reference to distributed exponence*. Ph.D. dissertation, Australian National University.
- Dareda, Jerry (Jeks). 2016. Ende tån bo eka (The Ende Tribe). *LSNG08*. http://catalog.paradisec.org.au/collections/LSNG08/items/RE_EN008.
- Dareda, Jerry (Jeks). 2018. IPA minimal pair list – Jerry Dareda. *LSNG08*. http://catalog.paradisec.org.au/collections/LSNG08/items/RE_EE025.
- Dobola, Kaoga. 2018. IPA minimal pair list – Kaoga Dobola. *LSNG08*. http://catalog.paradisec.org.au/collections/LSNG08/items/RE_EE022.
- Döhler, Christian. 2018. *A grammar of Komnzo* (Studies in Diversity Linguistics 20). Berlin: Language Science Press.
- Eberhard, David M., Gary F. Simons & Charles D. Fennig (eds.). 2019. *Ethnologue: Languages of the world*, 22nd edn. Dallas, TX: SIL International. <http://www.ethnologue.com>.
- Ellison, Mark T., Nicholas Evans, Eri Kashima, Kate L. Lindsey, Kyla Quinn, Dineke Schokkin & Jeff Siegel. 2017. Diachronic typology meets contact typology: A regional case study from Southern New Guinea. Presented at the 12th Conference of the Association for Linguistic Typology, Canberra.
- Evans, Nicholas. 2012. Even more diverse than we had thought: The multiplicity of trans-Fly languages. In Nicholas Evans & Marian Klamer (eds.), *Melanesian languages on the edge of Asia: Challenges for the 21st century, language documentation and conservation* (Language Documentation and Conservation Special Publication No. 5), 109–149. Honolulu, HI: University of Hawai'i Press.
- Evans, Nicholas, Wayan Arka, Matthew Carroll, Yun Jung Choi, Christian Döhler, Volker Gast, Eri Kashima, Emil Mittag, Bruno Olsson, Kyla Quinn, Dineke Schokkin, Philip Tama, Charlotte van Tongeren & Jeff Siegel. 2018. The languages of Southern New Guinea. In Bill Palmer (ed.), *The languages and linguistics of New Guinea: A comprehensive guide*, 641–774. Berlin & Boston, MA: De Gruyter Mouton.
- Evans, Nicholas, Matthew J. Carroll & Christian Döhler. 2017. Reconstructing the phonology of Proto-Yam. Presented at the Conference of the Australian Linguistic Society, Sydney.
- Evans, Nicholas, Kate L. Lindsey & Dineke Schokkin. 2019. Reconstructing liquids in proto-Pahoturi. Presented at the International Conference on Historical Linguistics, Canberra.
- Evans, Nicholas & Julia Miller. 2016. Nen. *Journal of the International Phonetic Association* 46(3), 331–349.
- Foley, William A. 2000. The languages of New Guinea. *Annual Review of Anthropology* 29(1), 357–404.
- Frank, Wendy. 2018. IPA minimal pair list – Wendy Frank. *LSNG08*. http://catalog.paradisec.org.au/collections/LSNG08/items/RE_EE008.
- Geser, Kwale. 2018. IPA minimal pair list – Kwale Geser. *LSNG08*. http://catalog.paradisec.org.au/collections/LSNG08/items/SE_EE053.
- Geser, Wagiba. 2017. Long distance vocatives. *LSNG08*. http://catalog.paradisec.org.au/collections/LSNG08/items/SE_EI001.
- Geser, Wagiba. 2018a. IPA minimal pair list – Wagiba Geser. *LSNG08*. http://catalog.paradisec.org.au/collections/LSNG08/items/RE_EE011.
- Geser, Wagiba. 2018b. IPA word list 2 – Wagiba Geser. *LSNG08*. http://catalog.paradisec.org.au/collections/LSNG08/items/SE_EE060.
- Geser, Wagiba. 2018c. IPA word list 3 – Wagiba Geser. *LSNG08*. http://catalog.paradisec.org.au/collections/LSNG08/items/SE_EE061.

⁵ References to collection *LSNG08* refer to the PARADISEC archival collection by Lindsey (2015). Years refer to the date of recording.

- Giwo, Musato. 2016. Yamfinder survey (Ende). In Kate L. Lindsey (ed.), *The language corpus of Ende and other Pahoturi River languages*. Canberra: Pacific and Regional Archive for Digital Sources in Endangered Cultures (PARADISEC). http://catalog.paradisec.org.au/collections/LSNG08/items/SE_EE024.
- Jerry, Gidu. 2016a. Announcement #1. *LSNG08*. http://catalog.paradisec.org.au/collections/LSNG08/items/SE_SF007.
- Jerry, Gidu. 2016b. Announcement #2. *LSNG08*. http://catalog.paradisec.org.au/collections/LSNG08/items/SE_SF010.
- Jerry, Gidu. 2016c. Announcement #3. *LSNG08*. http://catalog.paradisec.org.au/collections/LSNG08/items/SE_SF011.
- Jerry, Gidu. 2016d. Announcement #4. *LSNG08*. http://catalog.paradisec.org.au/collections/LSNG08/items/SE_SF012.
- Jerry, Gidu. 2016e. Announcement #5. *LSNG08*. http://catalog.paradisec.org.au/collections/LSNG08/items/SE_SF014.
- Kaoga (Dobola), Andrew. 2018a. IPA minimal pair list – Andrew Kaoga (Dobola). *LSNG08*. http://catalog.paradisec.org.au/collections/LSNG08/items/RE_EE007.
- Kaoga (Dobola), Andrew. 2018b. Kāmag a Yābād a (The West Wind and the Sun). *LSNG08*. http://catalog.paradisec.org.au/collections/LSNG08/items/RE_EN070.
- Karea, Namaya. 2018. IPA minimal pair list – Namaya Karea. *LSNG08*. http://catalog.paradisec.org.au/collections/LSNG08/items/RE_EE023.
- Kharlamov, Viktor. 2018. Prevoicing and prenasalization in Russian initial plosives. *Journal of Phonetics* 71, 215–228.
- Kurupel, Donae. 2018. IPA minimal pair list – Donae Kurupel. *LSNG08*. http://catalog.paradisec.org.au/collections/LSNG08/items/SE_EE050.
- Kurupel, Paine. 2018. IPA minimal pair list – Paine Kurupel. *LSNG08*. http://catalog.paradisec.org.au/collections/LSNG08/items/SE_EE049.
- Kurupel, Sarbi. 2018. IPA minimal pair list – Sarbi Kurupel. *LSNG08*. http://catalog.paradisec.org.au/collections/LSNG08/items/SE_EE051.
- Kurupel (Suwede), Warama. 2018a. IPA minimal pair list – Warama Kurupel (Suwede). *LSNG08*. http://catalog.paradisec.org.au/collections/LSNG08/items/RE_EE012.
- Kurupel (Suwede), Warama. 2018b. IPA word list 2 – Warama Kurupel (Suwede). *LSNG08*. http://catalog.paradisec.org.au/collections/LSNG08/items/SE_EE059.
- Lindsey, Kate L. 2015. *Language corpus of Ende and other Pahoturi River languages*. Canberra: The Pacific and Regional Archive for Digital Sources in Endangered Cultures (PARADISEC). doi: 10.26278/5c1a5cfcaacde. <http://catalog.paradisec.org.au/collections/LSNG08>.
- Lindsey, Kate L. 2019. *Ghost elements in Ende phonology*. Ph.D. dissertation, Stanford University. <http://purl.stanford.edu/ys194fp6634>.
- Mado, Karea. 2018. IPA minimal pair list – Karea Mado. *LSNG08*. http://catalog.paradisec.org.au/collections/LSNG08/items/RE_EE024.
- McCloy, Daniel R. 2016. *phonR*: Tools for phoneticians and phonologists. R package version 1.
- Olsson, Bruno. 2017. *The Coastal Marind language*. Ph.D. dissertation, Nanyang Technological University.
- Ringen, Catherine & Vladimir Kulikov. 2012. Voicing in Russian stops: Cross-linguistic implications. *Journal of Slavic Linguistics* 20(2), 269–286.
- Sarvasy, Hannah. 2017a. *A grammar of Nungon: A Papuan language of northeast New Guinea*. Leiden: Brill.
- Sarvasy, Hannah. 2017b. Morphological shouting: The Nungon Call-at-Distance form. Presented at the 12th Conference of the Association for Linguistic Typology, Canberra.
- Sowati (Kurupel), Maryanne. 2018. IPA minimal pair list – Maryanne Sowati Kurupel. *LSNG08*. http://catalog.paradisec.org.au/collections/LSNG08/items/RE_EE005.
- Strong, Katherine, Kate L. Lindsey & Katie Drager. 2020. Gender, oration, and variable affrication in Ende. *University of Pennsylvania Working Papers in Linguistics* 26(2).

- Warama (Kurupel), Gloria. 2018. IPA minimal pair list – Gloria Warama (Kurupel). *LSNG08*. http://catalog.paradisec.org.au/collections/LSNG08/items/SE_EE052.
- Warama, Tonny (Tonzah). 2018a. IPA minimal pair list – Tonny (Tonzah) Warama. *LSNG08*. http://catalog.paradisec.org.au/collections/LSNG08/items/RE_EE009.
- Warama, Tonny (Tonzah). 2018b. IPA minimal pair list 2 – Tonny (Tonzah) Warama. *LSNG08*. http://catalog.paradisec.org.au/collections/LSNG08/items/RE_EE010.
- Warama, Winson. 2018. IPA minimal pair list – Winson Warama. *LSNG08*. http://catalog.paradisec.org.au/collections/LSNG08/items/RE_EE006.