

# Flow onset for a single bubble in a yield-stress fluid

Ali Pourzahedi<sup>1</sup>, Emad Chaparian<sup>2,†</sup>, Ali Roustaei<sup>3,†</sup> and Ian A. Frigaard<sup>1,2</sup>

<sup>1</sup>Department of Mechanical Engineering, University of British Columbia, 2054-6250 Applied Science Lane, Vancouver, BC V6T 1Z4, Canada

<sup>2</sup>Department of Mathematics, University of British Columbia, 1984 Mathematics Road, Vancouver, BC V6T 1Z2, Canada

<sup>3</sup>School of Engineering Science, College of Engineering, University of Tehran, Tehran 14155-6619, Iran

(Received 17 July 2021; revised 3 November 2021; accepted 21 November 2021)

We use computational methods to determine the minimal yield stress required in order to hold static a buoyant bubble in a yield-stress liquid. The static limit is governed by the bubble shape, the dimensionless surface tension ( $\gamma$ ) and the ratio of the yield stress to the buoyancy stress ( $Y$ ). For a given geometry, bubbles are static for  $Y > Y_c$ , which we determine for a range of shapes. Given that surface tension is negligible, long prolate bubbles require larger yield stress to hold static compared with oblate bubbles. Non-zero  $\gamma$  increases  $Y_c$  and for large  $\gamma$  the yield-capillary number ( $Y/\gamma$ ) determines the static boundary. In this limit, although bubble shape is important, bubble orientation is not. Two-dimensional planar and axisymmetric bubbles are studied.

**Key words:** multiphase flow, plastic materials, bubble dynamics

## 1. Introduction

With a closed tube of a hydrogel and some vigorous shaking one can create a wide range of stationary bubbles; see [figure 1](#). These range in size over many decades. The smaller ones may be more spherical or elliptic, presumably as surface tension is significant. Larger bubbles can be quite angular and contain concavities. There is no obvious orientation with respect to gravity. The ability of the fluid to resist both buoyancy and surface tension forces and remain stationary necessitates a constitutive law with a finite (deviatoric) stress at zero strain rate, i.e. a yield stress or equivalent. This is a purely dimensional argument. The simplest such fluids are described by viscoplastic models such as the Bingham fluid.

Viscoplastic fluids are ubiquitous in a wide variety of industrial and medical applications, as well as geophysical sciences. The common characteristic of all these

<sup>†</sup> Email addresses for correspondence: [emad@math.ubc.ca](mailto:emad@math.ubc.ca); [aroustaei@ut.ac.ir](mailto:aroustaei@ut.ac.ir)

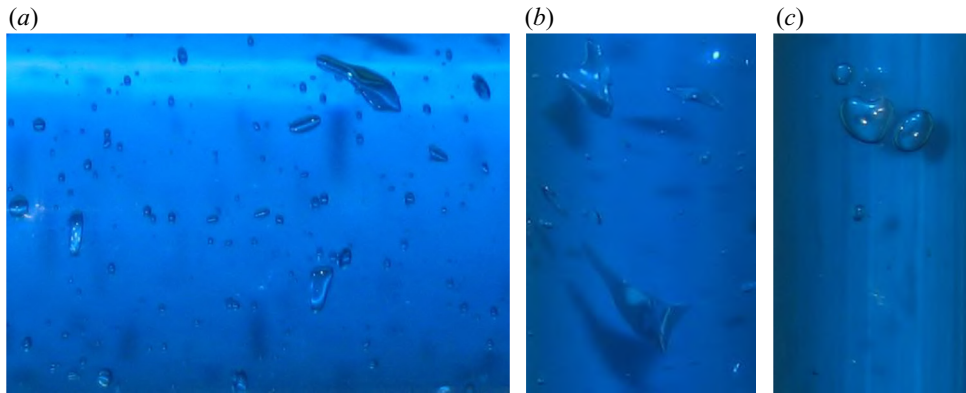


Figure 1. A range of static bubbles in a Carbopol gel (similar effects with many commercial hair gels).

materials is their yield stress, meaning that they flow only if the stress applied is greater than a yield value; otherwise they exhibit a solid-like behaviour (Balmforth, Frigaard & Ovarlez 2014). The dynamics of bubbles in viscoplastic fluids contains many interesting problems that are not fully explored. In this study, we focus on the boundary between flow and entrapment for single bubbles in a yield-stress fluid. As figure 1 suggests, shape, size and surface tension effects are all of importance and will be explored.

More than a toy problem, static bubbles in viscoplastic fluids occur in many industrial settings. In the oil sands industry, the by-products of the extraction of bitumen from oil sands have been stored in tailings ponds over many decades. Pond liquids, known as ‘fluid fine tailings’ and ‘mature fine tailings’ (FFT/MFT) are complex suspensions rheologically characterised as thixotropic yield-stress fluids (Derakhshandeh 2016). Anaerobic micro-organisms within the fluid form both carbon dioxide and methane. Management of emissions presents a difficult environmental challenge to the oil sands industry (Small *et al.* 2015), and there is consequent interest in estimating the degree to which FFT/MFT can retain gas bubbles. Similar phenomena occur in the nuclear waste slurry, where flammable (hydrogen) gas rises from the viscoplastic waste suspension (Johnson *et al.* 2017). Detailed studies of gas bubbles in nuclear waste tanks, which also contain thixotropic yield-stress material, show a wide range of shapes in retained bubbles (Gauglitz *et al.* 1996). Similar mechanisms occur in geological materials, such as shallow marine, terrestrial sediments and some flooded soils, giving a wider relevance to questions of bubble formation and release (Boudreau 2012). In the food industry, entrapment of air bubbles inside products may give them a different texture and flavour, such as aerated chocolate. It may also affect the efficiency of fermentation processes. In the cosmetic industry, products such as hair gel are often sold by volume, bubbles included.

While the above are concerned with bubble entrapment in stationary fluids, the phenomenon is also of interest in flowing fluid. In the oil and gas industry, influx of formation gases into the drilling mud (generally a viscoplastic fluid) might occur during well construction, known as gas kick. If uncontrolled, the gas will rise to the surface, potentially causing a blowout with severe safety and environmental hazards. When controlling kicks the (gas cut) drilling mud is circulated slowly from the well, which is closed in and under pressure. Whereas large gas bubbles generally rise through the mud, smaller bubbles may remain trapped (Johnson & White 1991; Johnson *et al.* 1995). The trapped gas fraction is, however, hazardous to well control operations (Gonzalez, Shaughnessy & Grindle 2000) and needs to be accounted for in operations. It is

worth commenting that the trapping of gas by the yield stress of a fluid is analogous to the retention of dissolved gas under pressure e.g. carbon dioxide in deep lakes. Risks associated with these configurations (i.e. limnic eruptions), thus have yield-stress analogues for the industrial processes discussed.

Despite the interest in these problems, there are still relatively few studies. The motion of bubbles in a viscoplastic fluid has been studied theoretically and numerically in the literature by Dubash & Frigaard (2004), Singh & Denn (2008), Tsamopoulos *et al.* (2008), Dimakopoulos, Pavlidis & Tsamopoulos (2013), Tripathi *et al.* (2015), Karapetsas *et al.* (2019), Chaparian & Frigaard (2021) and Deoclecio *et al.* (2021). Tsamopoulos *et al.* (2008) comprehensively studied the steady rise of a single axisymmetric bubble in a viscoplastic fluid. They investigated the effect of inertia, surface tension and yield stress on the bubble shape and velocity. Later, Dimakopoulos *et al.* (2013) expanded the problem to Herschel–Bulkley fluids and compared the previous regularisation approach with the augmented Lagrangian method, finding relatively similar results. Interaction of multiple rising bubbles or falling droplets in a Bingham fluid is investigated in 2D by Singh & Denn (2008), again using a regularisation method. They observed that multiple bubbles with the same size, aligned vertically and close to each other, can overcome the yield stress, where a single bubble would remain trapped. In Chaparian & Frigaard (2021) we have studied the effects of multiple bubbles (clouds/suspensions) on the static stability limit using a Monte Carlo approach, finding that the interaction of clusters of bubbles is all important in determining the flow onset. Tripathi *et al.* (2015) studied the rise of axisymmetric bubbles in a Bingham fluid using a regularisation method. They have shown that, in the presence of inertia, high yield stress and low surface tension can lead to an unsteady oscillating rise of bubbles. Karapetsas *et al.* (2019) have investigated the bubble rise dynamics when subjected to an acoustic pressure field and found that acoustic excitation accelerates the motion of the bubble by increasing the size of the yielded region surrounding the bubble. In a recent study, Deoclecio *et al.* (2021) have analysed the entrapment conditions of initially spherical and ellipsoidal bubbles in a regularised Bingham fluid. They found that surface tension does not play a role in entrapment of spherical bubbles, however, it will facilitate the rise of non-spherical bubbles by yielding of the surrounding fluid.

While in Newtonian fluids, the Stokes flow limit gives a slowly moving spherical bubble, the Stokes flow limit of a bubble in a yield-stress fluid is non-unique for static configurations. Tsamopoulos *et al.* (2008) study these scenarios as a limit of steadily moving bubbles. For different Bond numbers the flow stops at different critical yield stresses. However, their procedure also iterates to find the shape of the steadily moving bubble: they take a spherical bubble as the initial shape only. Thus, shape effects are not studied independently in their formulation. As [figure 1](#) shows, if the static problem is studied without limiting from a moving bubble, there is little restriction on the bubble shape that can be trapped. This explains our approach here, in which we control the shape and study the critical limit for flow onset. This non-uniqueness and the general theoretical framework for static bubbles was first expounded by Dubash & Frigaard (2004), who formally defined the critical Bingham (yield) number above which a given bubble shape remains trapped in a viscoplastic fluid, using the variational methods. Here, we explore this approach computationally.

In addition to the numerical and analytical methods, there have been several experimental studies trying to better understand buoyancy-driven rise of bubbles in viscoplastic materials (Astarita & Apuzzo 1965; Terasaka & Tsuge 2001; Dubash & Frigaard 2007; Sikorski, Tabuteau & de Bruyn 2009; Mougín, Magnin & Piau 2012; Lopez, Naccache & de Souza Mendes 2018; Pourzahedi, Zare & Frigaard 2021; Zare,

Daneshi & Frigaard 2021). The first notable work in this field was performed by Astarita & Apuzzo (1965), where they reported the shape as well as the correlation between velocity and volume of gas bubbles in various non-Newtonian fluids. Terasaka & Tsuge (2001) experimentally investigated the effect of operating parameters such as injection nozzle diameter, gas flow rate and rheological parameters on the bubble volume released into viscous yield-stress fluids. Dubash & Frigaard (2007) as well as Sikorski *et al.* (2009) performed a similar experimental study, and used the results to predict the stopping condition for the rise of single bubbles using an energy budget model. In general, such models have not been successful in that they extrapolate from the behaviour of moving bubbles, which are typically far from the critical conditions, may have different shapes, etc. In another study, Mougín *et al.* (2012) performed particle image velocimetry analysis in order to find the local velocity and strain fields. They investigated the influence of internal stresses existing within the yield-stress fluids on the trajectory and shape of bubbles. Recently, Zare *et al.* (2021) have further explored the effect of ‘damaged’ pathways created by previous bubbles on the trajectory of the subsequent bubbles. Lopez *et al.* (2018) studied the effect of yield stress, inertia, buoyancy and elasticity on the bubble shape and velocity using various concentrations of a Carbopol solution. An interesting feature of experimentally observed bubbles (Dubash & Frigaard 2007; Sikorski *et al.* 2009; Lopez *et al.* 2018; Pourzahedi *et al.* 2021) is that they tend to adopt an inverted teardrop shape as they rise. This is quite different to computational results and it has been suggested that the root cause is viscoelasticity, causing the tail to extend (Tsamopoulos *et al.* 2008).

In this study we fill the knowledge gap of quantifying the limits for which bubbles rise or remain trapped. While we cannot cover all possible shapes, we study families of bubble shapes so that the characteristic effects of aspect ratio and curvature can be understood. For these families we explore the relative effects of surface tension and buoyancy on flow onset. Although we also compute non-zero flows, the emphasis is on the static limit. The definition of the problem and its governing equations is given in § 2. The computational methods are presented in § 3. We compare results for elliptical bubbles with the slipline theory (perfect plasticity), as a pseudo-benchmark. The effects of aspect ratio and surface tension on the critical yield number for two-dimensional (2-D) elliptical and quartic bubbles are explored in § 4. Axisymmetric results are presented in § 5. We study families of elliptic bubbles, where the results are qualitatively similar to the planar 2-D bubbles. We also explore inverted teardrop shaped bubbles similar to those found experimentally, far from the yield limit. We close the study with some concluding remarks regarding the findings and future directions.

## 2. Formulation

The general setting considered is that of a single bubble in an expanse of yield-stress fluid; see figure 2. We mostly consider the yield limit of bubbles, which is the same for all yield-stress fluids using a von Mises yield criterion, and hence we consider the simplest Bingham fluid model. Similarly, due to the focus on the yield limit, we may consider the flow to be incompressible and non-inertial. Throughout this paper, the  $\hat{\cdot}$  accent signifies a dimensional parameter or variable

$$0 = -\nabla \hat{p} + \nabla \cdot \hat{\boldsymbol{\tau}} - \hat{\rho}_f \hat{g} \mathbf{e}_g \quad \text{in } \Omega \setminus \bar{X}, \quad (2.1)$$

$$0 = \nabla \cdot \hat{\mathbf{u}}. \quad (2.2)$$

Here  $\hat{p}$  is the pressure inside the ambient yield-stress liquid and  $\hat{\boldsymbol{\tau}}$  is the deviatoric stress tensor. The bubble is finite and the flow is driven by the buoyancy of the bubble. Thus,

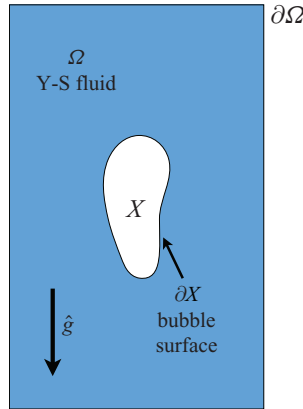


Figure 2. Schematic of the flow set-up.

distant from the bubble, the stress falls below the yield stress of the fluid and the flow is stagnant. Without loss of generality we impose zero velocity on the flow in the far field.

### 2.1. Dimensionless model and relevant dimensionless groups

We scale the pressure ( $\hat{p}$ ) and the deviatoric stress tensor ( $\hat{\boldsymbol{\tau}}$ ) with the buoyancy stress  $(\hat{\rho}_f - \hat{\rho}_b)\hat{g}\hat{\ell}$ , and the velocity vector ( $\hat{\mathbf{u}} = (\hat{u}, \hat{v})$ ) with the velocity  $\hat{U}$

$$(\hat{\rho}_f - \hat{\rho}_b)\hat{g}\hat{\ell} = \hat{\mu}\frac{\hat{U}}{\hat{\ell}} \Rightarrow \hat{U} = \frac{(\hat{\rho}_f - \hat{\rho}_b)\hat{g}\hat{\ell}^2}{\hat{\mu}}, \quad (2.3)$$

which naturally arises from balancing the buoyancy stress with a viscous stress. In these equations,  $\hat{\rho}_f$ ,  $\hat{\rho}_b$ ,  $\hat{g}$ ,  $\mathbf{e}_g$  are respectively the densities of fluid, gas, the gravitational acceleration and its direction;  $\hat{\mu}$  is the plastic viscosity. The length  $\hat{\ell}$  is fixed by the dimensional bubble size. For our 2-D planar flows,  $\pi\hat{\ell}^2 = \text{meas}(X)$ , and for our 3-D axisymmetric flows,  $(4/3)\pi\hat{\ell}^3 = \text{meas}(X)$ , i.e. considering the circle and sphere as reference geometries respectively. Thus, our scaled bubble domain  $X$  will have area  $\pi$ , or volume  $(4/3)\pi$ .

The dimensionless Stokes and the constitutive equations are,

$$0 = -\nabla p + \nabla \cdot \boldsymbol{\tau} - \frac{1}{1 - \rho} \mathbf{e}_g, \quad (2.4)$$

and

$$\left. \begin{aligned} \boldsymbol{\tau} &= \left(1 + \frac{Y}{\|\dot{\boldsymbol{\gamma}}\|}\right) \dot{\boldsymbol{\gamma}} && \text{if } \|\boldsymbol{\tau}\| > Y, \\ \dot{\boldsymbol{\gamma}} &= 0 && \text{if } \|\boldsymbol{\tau}\| \leq Y. \end{aligned} \right\} \quad (2.5)$$

The two dimensionless groups are the density ratio  $\rho = \hat{\rho}_b/\hat{\rho}_f$ , and  $Y = \hat{\tau}_y/(\Delta\hat{\rho}\hat{g}\hat{\ell})$ , which is the yield number. Generally, we expect  $\hat{\rho}_b \ll \hat{\rho}_f$ , so that in practice  $\Delta\hat{\rho} \approx \hat{\rho}_f$  and  $\rho \approx 0$ . In (2.5)  $\dot{\boldsymbol{\gamma}}$  is the rate of strain tensor and  $\|\cdot\|$  is the norm associated with the tensor inner

product

$$\mathbf{c} : \mathbf{d} = \frac{1}{2} \sum_{ij} c_{ij} d_{ij}; \tag{2.6}$$

e.g.  $\|\boldsymbol{\tau}\| = \sqrt{\boldsymbol{\tau} : \boldsymbol{\tau}}$ . The Cauchy stress tensor is  $\boldsymbol{\sigma} = -p\mathbf{I} + \boldsymbol{\tau}$ .

The velocity vector and tangential components of the traction (i.e.  $(\boldsymbol{\sigma} \cdot \mathbf{n}) \cdot \mathbf{t}$ ) are continuous across the bubble surface  $\partial X$ . Since the dynamic viscosity of the gas inside the bubble is generally negligible compared with the effective viscosity of yield-stress liquids, we assume

$$(\boldsymbol{\sigma} \cdot \mathbf{n}) \cdot \mathbf{t} \approx 0, \quad \text{on } \partial X. \tag{2.7}$$

Thus, the tangential components of the traction vanish and the bubble can be regarded as inviscid; tangential velocities may slip and the normal velocity is continuous. The jump in the normal component of the traction is controlled by the dimensionless surface tension  $\gamma$  ( $= \hat{\gamma} / \hat{\rho}_f \hat{g} \hat{\ell}^2$ ; the inverse of the Bond number),

$$-p + p_b + (\boldsymbol{\tau} \cdot \mathbf{n}) \cdot \mathbf{n} = \frac{\gamma}{\kappa}, \tag{2.8}$$

where

$$\frac{1}{\kappa} = \frac{1}{\kappa_1} + \frac{1}{\kappa_2} \tag{2.9}$$

and  $\kappa_1$  and  $\kappa_2$  are radii of curvature (in two dimensions  $\kappa_2 = \infty$ ). In (2.8),  $p_b$  is the pressure inside the bubble which can be considered as a constant in the inviscid and incompressible limit.

The drag force on the bubble surface should balance the buoyancy of the bubble,  $F$ . In our 2-D flows

$$\hat{F} = \pi \hat{\ell}^2 \hat{\rho}_f \hat{g} = \int_{\partial X} [(-\hat{p}\mathbf{1} + \hat{\boldsymbol{\tau}}) \cdot \mathbf{n}] \cdot \mathbf{e}_g \, d\hat{S} = \int_{\partial X} (\hat{\boldsymbol{\sigma}} \cdot \mathbf{n}) \cdot \mathbf{e}_g \, d\hat{S}, \tag{2.10}$$

or in dimensionless form

$$F = \frac{\pi}{1 - \rho} = \int_{\partial X} (\boldsymbol{\sigma} \cdot \mathbf{n}) \cdot \mathbf{e}_y \, dS. \tag{2.11}$$

We will use these expressions later in § 3.3.

### 2.2. Limit of zero flow

In the present study, we are mainly interested in the yield limit of bubble motion, i.e. conditions under which the bubble is held static. From the variational principles derived by Dubash & Frigaard (2004), we can conclude that

$$Y \int_{\Omega \setminus \bar{X}} \|\dot{\boldsymbol{\gamma}}\| \, d\Omega \leq - \int_{\Omega \setminus \bar{X}} \mathbf{u} \cdot \mathbf{e}_g \, d\Omega - \int_{\partial X} \frac{\gamma}{\kappa} (\mathbf{u} \cdot \mathbf{n}) \, dS. \tag{2.12}$$

From left to right, the integrals above represent the plastic dissipation, denoted  $j(\mathbf{u})$ , the work done by buoyancy and by surface tension, denoted  $L(\mathbf{u})$  and  $T(\mathbf{u})$ , respectively.

In terms of these functionals, for  $\mathbf{u} \neq 0$ , we have

$$Y \leq - \frac{\int_{\Omega \setminus \bar{X}} \mathbf{u} \cdot \mathbf{e}_g \, d\Omega}{\int_{\Omega \setminus \bar{X}} \|\dot{\boldsymbol{\gamma}}\| \, d\Omega} - \frac{\int_{\partial X} \frac{\gamma}{\kappa} (\mathbf{u} \cdot \mathbf{n}) \, dS}{\int_{\Omega \setminus \bar{X}} \|\dot{\boldsymbol{\gamma}}\| \, d\Omega} \equiv \frac{L(\mathbf{u})}{j(\mathbf{u})} + \frac{T(\mathbf{u})}{j(\mathbf{u})}. \tag{2.13}$$

Hence, for a given shape of bubble, the critical yield number  $Y_c$  above which the bubble will not rise is

$$Y_c \equiv \sup_{\mathbf{v} \in V, \mathbf{v} \neq 0} \left\{ - \frac{\int_{\Omega \setminus \bar{X}} \mathbf{v} \cdot \mathbf{e}_g \, d\Omega}{\int_{\Omega \setminus \bar{X}} \|\dot{\boldsymbol{\gamma}}(\mathbf{v})\| \, d\Omega} - \frac{\int_{\partial X} \frac{\gamma}{\kappa} (\mathbf{v} \cdot \mathbf{n}) \, dS}{\int_{\Omega \setminus \bar{X}} \|\dot{\boldsymbol{\gamma}}(\mathbf{v})\| \, d\Omega} \right\}, \tag{2.14}$$

where  $\mathbf{v}$  is any admissible velocity field from the set  $V$  of all admissible fields. The first term on the right-hand side represents the effect of the buoyancy stress on yielding; the numerator is the flux due to the bubble. This first term also appears in similar problems involving solid particles (Putz & Frigaard 2010; Chaparian & Frigaard 2017b), although there the interfacial conditions are different and  $\rho \neq 0$ . The second term represents the effect of the surface tension.

Since  $\mathbf{v}$  is an admissible velocity field, it is also divergence free and the net flux through the bubble surface is consequently zero

$$\int_{\partial X} (\mathbf{v} \cdot \mathbf{n}) \, dS = 0. \tag{2.15}$$

We can split  $\mathbf{v}$  into two components: the mean bubble speed  $V_b$  and a perturbation  $\mathbf{v}'$

$$\mathbf{v} = \frac{- \int_{\Omega \setminus \bar{X}} (\mathbf{v} \cdot \mathbf{e}_g) \, d\Omega}{\pi} \mathbf{e}_g + \mathbf{v}' = V_b \mathbf{e}_g + \mathbf{v}' \quad \text{on } \partial X. \tag{2.16}$$

The surface flux can now be rewritten as

$$\int_{\partial X} (\mathbf{v} \cdot \mathbf{n}) \, dS = V_b \int_{\partial X} (\mathbf{n} \cdot \mathbf{e}_g) \, dS + \int_{\partial X} (\mathbf{v}' \cdot \mathbf{n}) \, dS = 0. \tag{2.17}$$

It is clear that  $\int_{\partial X} (\mathbf{n} \cdot \mathbf{e}_g) \, dS$  is zero, and therefore

$$\int_{\partial X} (\mathbf{v}' \cdot \mathbf{n}) \, dS = 0. \tag{2.18}$$

Turning to the second term in (2.14), since  $\kappa$  is not a constant for a general bubble shape along  $\partial X$

$$\int_{\partial X} \frac{\gamma}{\kappa} (\mathbf{v} \cdot \mathbf{n}) \, dS \neq 0, \tag{2.19}$$

in general. The only case in which this term is definitely zero is a sphere (or a circular bubble in two dimensions). Physically, this means that, in the case of a spherical (or circular) bubble, only buoyancy controls the yielding of the bubble; surface tension plays

no role. This is intuitive for these equilibrium shapes, i.e. we expect the surface tension to deform the bubble towards its equilibrium shape. For a general bubble shape,  $Y_c$  is clearly also a function of the surface tension. Later, to analyse this effect the yield-capillary number is defined as

$$Ca_Y = Y/\gamma = \frac{\hat{\tau}_y \hat{\ell}}{\hat{\gamma}}. \tag{2.20}$$

### 3. Methodology and benchmarking

In overview, we use an augmented Lagrangian method coupled with an adaptive finite element method (Roquet & Saramito 2003) implemented in FreeFem++ (Hecht 2012) to solve for the flow at fixed shape,  $\gamma$  and  $Y$ . To determine  $Y_c$  we then iteratively increase  $Y$  until the flow stops. This basic procedure has been validated extensively in previous studies (Roustaei *et al.* 2016; Chaparian & Frigaard 2017*b*; Chaparian *et al.* 2020; Chaparian & Tammisola 2021), including those with particles. The mesh refinement nicely captures the yield surfaces after a few refinements.

#### 3.1. Computational method

As we are concerned with finding the critical flow/no-flow condition (i.e.  $Y_c$ ), which represents a limiting balance between buoyancy, surface tension and plastic dissipation functionals, i.e. (2.14), we compute the flows by solving the variational formulation of the exact non-smooth Bingham model. The alternative viscosity regularisation methods are simple and effective in many cases, but have two drawbacks. First, characteristic features such as the yield surface shape are very sensitive to the regularisation used (Burgos, Alexandrou & Entov 1999). Second, large errors can result when computing flows that are close to the critical no-flow limit, e.g. as shown recently by Ahmadi & Karimfazli (2021). The issue is that as the regularisation parameter is taken to its limiting value, the velocity field of the regularised model does converge to the exact Bingham velocity, but there is no guarantee that the stress field will converge (Frigaard & Nouar 2005).

The variational formulation of the Bingham fluid dates back to Prager (1954) and was formalised by Duvaut & Lions (1976). They established two inequalities for the Stokes flow of Bingham fluid: a minimisation based on velocity field (primal variable in optimisation literature) and a maximisation based on the stress field (dual variable). The two functionals are

$$H(\mathbf{v}) = \frac{1}{2} \int_{\Omega \setminus \bar{X}} \|\dot{\boldsymbol{\gamma}}\|^2 \, d\Omega + Yj(\mathbf{v}) - L(\mathbf{v}) - T(\mathbf{v}), \tag{3.1}$$

$$K(\boldsymbol{\tau}) = \frac{1}{2} \int_{\Omega \setminus \bar{X}} \max(\|\boldsymbol{\tau}\| - Y, 0)^2 \, d\Omega. \tag{3.2}$$

The first term in (3.1) is half of the viscous dissipation, denoted  $a(\mathbf{v}, \mathbf{v})$ . An admissible velocity field  $\mathbf{v} \in \mathcal{V}$  is any divergence free velocity satisfying the boundary conditions. An admissible stress field  $\boldsymbol{\tau}$  is any stress field satisfying the momentum equations (2.1) including the stress boundary conditions. A pair  $(\mathbf{u}^*, \boldsymbol{\tau}^*)$  that solve the Stokes problem will result in  $H(\mathbf{u}^*) = -K(\boldsymbol{\tau}^*)$ . Note that the velocity is unique, but not the stress. For any other pair of admissible velocity/stress fields there is a difference between these values that is referred to as the duality gap. As discussed in Treskatis *et al.* (2018), the duality gap is the most reliable measure to make sure we have computed accurate stress fields as well as velocity fields, particularly close to the yield point.



## Flow onset for a single bubble in a yield-stress fluid

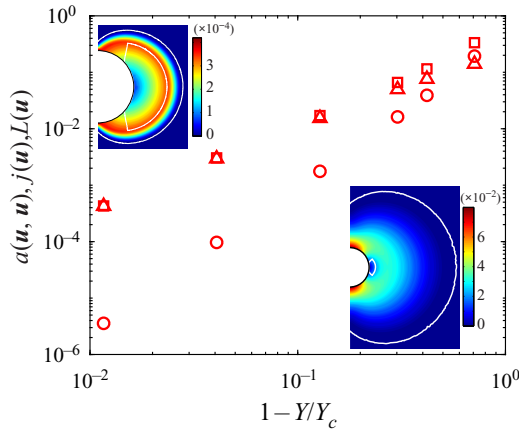


Figure 3. Viscous dissipation (○), plastic dissipation (△) and buoyancy work (□) functionals for  $\chi = 1$  and  $\gamma = 0$ . Insets illustrate the velocity field ( $|\mathbf{u}|$ ) for the cases of  $1 - Y/Y_c = 0.011$  (top left) and  $0.419$  (bottom right).

Glowinski, Lions & Trémolières (1981) developed the augmented Lagrangian (AL) method for solving the velocity maximisation (primal formulation). The AL has been successfully used to solve various flows e.g. in ducts (Saramito & Roquet 2001), around objects (Roquet & Saramito 2003) and for inertial flows (Roustaei & Frigaard 2015). Advances in computational optimisation have led to a re-exploration of these flows recently, using algorithms that exploit the duality. A variation of the FISTA (fast iterative shrinkage-thresholding algorithm) was applied to the stress maximisation formulation by Treskatis, Moyers-González & Price (2016), which achieves a higher order of convergence in terms of the duality gap. Here, we have used both AL and FISTA algorithms for our flows. This provides a basis to compare and cross-validate. We have used the duality gap as the criterion for measuring the convergence of the solutions and find very little difference in converged solutions with either algorithm; see the Appendix.

### 3.2. Benchmark flow

As a benchmark, we have computed 2-D flows around circular and elliptical bubbles parameterised by an aspect ratio  $\chi$ , i.e. the bubble surface is

$$\chi x^2 + \frac{y^2}{\chi} = 1. \quad (3.3)$$

The limiting solutions are explored fully later in the paper. Figure 3 shows the viscous dissipation  $a(\mathbf{u}, \mathbf{u})$ , plastic dissipation  $j(\mathbf{u})$  and buoyancy work  $L(\mathbf{u})$  functionals for  $\chi = 1$ . All functionals decay with a power-law behaviour as the yield number approaches the critical value. The viscous dissipation decays faster compared with the other functionals, in accordance with the computations of Dimakopoulos *et al.* (2013), and as must be true theoretically (Putz & Frigaard 2010). Evidently,  $j(\mathbf{u}) \sim L(\mathbf{u})$  as they decay, as is implicit from (2.14) in the absence of surface tension. The velocity field for two cases of  $1 - Y/Y_c = 0.011, 0.419$  are shown as insets. At yield numbers far away from the critical yield number (i.e. higher values of  $1 - Y/Y_c$ ), the yield surface surrounding the bubble is distant, and the yield surface at the bubble equator is small. As  $Y$  gets closer to  $Y_c$  the

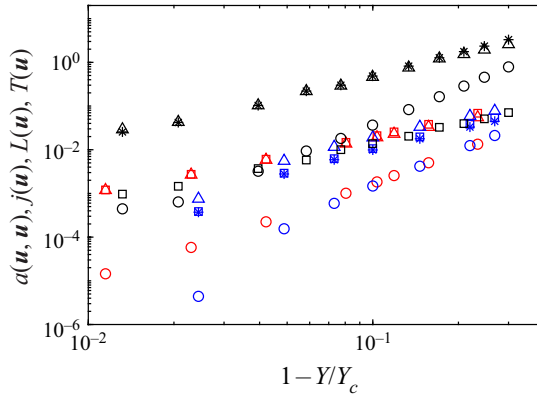


Figure 4. Viscous dissipation (○), plastic dissipation (△), buoyancy (□) and surface tension work (\*) functional for  $\chi = 2$ . Cases of  $\gamma = 0$ ,  $\gamma = 1$  and  $\gamma = 10$  are shown in red, blue and black symbols, respectively.

outer yield surface shrinks and the inner yield surface expands until they merge at  $Y = Y_c$ , where the bubble becomes entrapped.

To explore the effects of surface tension we set  $\chi = 2$ , so that the bubble is not in its equilibrium shape. Figure 4 shows the surface tension functional  $T(\mathbf{u})$  in addition to the previous functionals, for  $\gamma = 0, 1$  and  $10$ . Again, all functionals decay with a power-law behaviour as the yield number approaches the critical value and the viscous dissipation decay is the fastest. In the absence of surface tension, buoyancy work mainly dissipates into plastic deformation. At  $\gamma = 1$  we see an approximately equal  $T(\mathbf{u}) \sim L(\mathbf{u})$ , both balanced by  $j(\mathbf{u})$ . As the surface tension forces increase to dominate the flow (e.g.  $\gamma = 10$ ), it can be seen that most of the plastic dissipation originates from balancing the surface tension work  $T(\mathbf{u})$ .

### 3.3. Slipline analysis for 2-D bubbles

As the viscous dissipation is irrelevant to the yield limit, a natural direction to look for comparison is the theory of perfect plasticity, for which  $\|\hat{\boldsymbol{\tau}}^*\| = \hat{\tau}_y$ , since

$$\hat{\boldsymbol{\tau}}^* = \frac{\hat{\tau}_y}{\|\hat{\boldsymbol{\gamma}}^*\|} \hat{\boldsymbol{\gamma}}^*. \tag{3.4}$$

Here, we will use an asterisk to avoid mixing up with the viscoplastic variables. The unrestricted 2-D perfectly plastic flow can be transformed to an orthogonal curvilinear coordinate system ( $\alpha$  and  $\beta$ ) in which the directions coincide with the maximum shear stress ( $\hat{\boldsymbol{\tau}}_{\alpha\beta} = \pm \hat{\tau}_y$ ) directions (Hill 1950; Chakrabarty 2012). These orthogonal directions (i.e.  $\alpha$ - and  $\beta$ -directions) are the characteristic lines of the hyperbolic momentum equations in a 2-D flow, known as the sliplines. Finding the sliplines does not require extensive computational effort and therefore this theory has been developed to compare with the viscoplastic ‘yield limit’ for many different problems such as particle sedimentation (Hewitt & Balmforth 2018; Chaparian & Frigaard 2017a,b; Chaparian & Tammsola 2021); swimming (Hewitt & Balmforth 2017; Supekar, Hewitt & Balmforth 2020); and different studies in slump/dam-break type problems (Dubash *et al.* 2009; Liu *et al.* 2016; Chaparian & Nasouri 2018). The solution procedure consists of postulating an admissible stress field by means of the sliplines and calculating the lower bound for the

## Flow onset for a single bubble in a yield-stress fluid

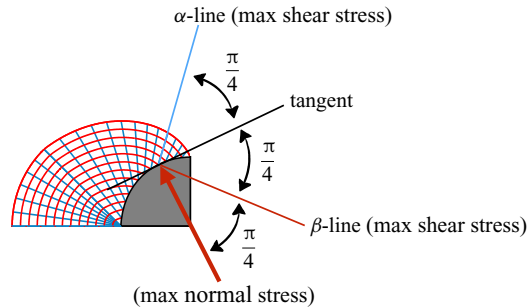


Figure 5. Schematic of the slipline network about a 2-D circular bubble. A quarter of the domain is shown due to symmetry.

limiting force. An upper bound of the force also can be calculated using an admissible velocity field. The solution is more exact if the gap between the lower and upper bounds is small. This is the perfectly plastic version of the duality gap.

Randolph & Houlsby (1984) proposed a slipline solution for flow around a laterally moving circular pile in soil to calculate the resistance. This solution has been used as a test problem in the context of 2-D particle sedimentation in yield-stress fluids (e.g. see Chaparian & Frigaard 2017b). One of the less explored parts of Randolph & Houlsby's solution is the case of non-adhesive soil. In this case, the tangential shear stress at the pile surface is less than  $\hat{\tau}_y$ ; namely  $(\hat{\tau}^* \cdot \mathbf{n})\mathbf{t} = \alpha_s \hat{\tau}_y$ , where  $0 \leq \alpha_s \leq 1$  is the adhesion factor. This implies that one family of sliplines (say  $\alpha$ -family) makes an angle  $[\pi/2 - \sin^{-1}(\alpha_s)]/2$  with the pile interface. In other words, when  $\alpha_s = 1$ , the  $\alpha$ -lines are tangential to the pile surface and when  $\alpha_s = 0$ ,  $\alpha$ -lines make  $\pi/4$  angle with the tangent to the pile surface. In the viscoplastic fluid context, Chaparian & Tammisola (2021) have shown that  $\alpha_s$  represents the ratio of the 'sliding yield stress' to the fluid yield stress. Hence,  $\alpha_s = 1$  is indeed equivalent to imposing no-slip boundary condition on the object (e.g. particle in a yield-stress fluid) and  $\alpha_s = 0$  is the same as having Navier slip (i.e. zero sliding yield stress) on the object. It is natural therefore to apply the same solution to the bubble yield limit in the limit of  $\gamma \rightarrow 0$  (as surface tension is not accounted for). A closer look at the boundary condition (2.7) reveals that for a 2-D circular bubble, the solution is the same as Randolph & Houlsby (1984) for  $\alpha_s = 0$ . We therefore briefly revisit the Randolph & Houlsby (1984) solution for the case of 2-D circular bubble and then extend it for an elliptical bubble with aspect ratio  $\chi$ .

### 3.3.1. Circular bubble

This is covered in more detail in Chaparian & Tammisola (2021). The maximum normal stress direction is perpendicular to the bubble surface. This is directly dictated by the boundary condition on the bubble surface where the bubble pressure  $p_b$  is constant along  $\partial X$ . Hence, the  $\beta$ -lines make an angle  $\pi/4$  with the normal vector. As discussed above, the shear stress in the tangential direction is zero and therefore the  $\alpha$ -lines make an angle  $\pi/4$  with the tangent to the bubble surface; see figure 5. From the symmetry constraints, along the vertical line of symmetry ( $x = 0$ ), the shear stress is zero ( $\tau_{xy}^* = 0$ ), while along the horizontal axis ( $y = 0$ ), it is maximum. Translating this into the slipline network, it means that the horizontal axis is itself an  $\alpha$ -line and all the sliplines that intercept the vertical axis should make an angle  $\pi/4$  with it.

We can construct an admissible stress field around the bubble with the aid of the sliplines and then integrate the force on the bubble surface in the direction  $e_g$  to find  $[\hat{F}_c^*]_L$ , the lower bound of the limiting force. The effect of buoyancy is absent in this admissible stress field, but by balancing the drag force with  $\Delta\hat{\rho}\hat{g}\hat{A} = \Delta\hat{\rho}\hat{g}\pi\ell^2$ , we can find the equivalent  $Y_c$ . The limiting plastic drag coefficient is defined as follows, where  $\hat{\ell}_\perp$  is the linear length of bubble perpendicular to the flow direction, e.g. twice the radius  $\hat{R}$  for a circular bubble

$$C_{d,c}^p = \frac{\hat{F}}{\hat{\tau}_y\hat{\ell}_\perp} = \frac{\hat{F}}{2\hat{R}\hat{\tau}_y}, \tag{3.5}$$

and from the slipline analysis we find

$$C_{d,c}^p = 6 + \pi \quad (\text{for } \alpha_s = 0). \tag{3.6}$$

Hence, we balance buoyancy and the lower bound of the drag force

$$[\hat{F}^*]_L = 2\hat{R}\hat{\tau}_y(6 + \pi) = (\hat{\rho}_f - \hat{\rho}_b)\hat{g} \times \pi\hat{R}^2, \tag{3.7}$$

and find the upper bound of the critical yield number as

$$[Y_c]_U = \frac{\hat{\tau}_y}{\Delta\hat{\rho}\hat{g}\hat{R}} = \frac{\pi}{2(6 + \pi)} \approx 0.172. \tag{3.8}$$

### 3.3.2. Ellipse

For the planar elliptical bubble (3.3), with aspect ratio  $\chi$ , we calculate the lower bound force from

$$[\hat{F}^*]_L = 4 \int_0^{\pi/2} \hat{\tau}_y\hat{\ell}_\perp \left( \bar{\sigma} + \frac{3\pi}{2} + 1 - 2\zeta \right) \sqrt{\chi^{-1} \sin^2 \theta_1 + \chi \cos^2 \theta_1} \cos \zeta \, d\theta_1, \tag{3.9}$$

where  $\theta_1 = \tan^{-1}[\chi^{-1} \tan \theta]$  and  $\zeta = \tan^{-1}(\chi \cot \theta_1)$ . Details of this type of calculation can be found in Chaparian & Frigaard (2017b) and Chaparian & Tammissola (2021).

This force lower bound converts to

$$[Y_c]_U = \frac{\pi}{4 [\hat{F}^*]_L}. \tag{3.10}$$

### 3.3.3. Comparing slipline and viscoplastic solutions

Figure 6 compares the slipline network with the viscoplastic solution for  $\chi = 1, 2$ , for  $Y$  just below  $Y_c$ . Although not precisely the same, the envelope of the sliplines approximates the yielded region of the viscoplastic fluid. The white line denotes the yield surface in the viscoplastic fluid and we see that the fluid is unyielded over a large part of the bubble surface, extending from the horizontal axis.

As we increase  $Y$  we find  $Y_c$  computationally for the viscoplastic flow, which can be compared with that from (3.9) and (3.10). We find  $\chi = 1 : Y_c \approx 0.172$ ,  $\chi = 2 : Y_c \approx 0.27$  and  $\chi = 5 : Y_c \approx 0.5$  from the slipline method, compared with  $\chi = 1 : Y_c \approx 0.172$ ,  $\chi = 2 : Y_c \approx 0.267$  and  $\chi = 5 : Y_c \approx 0.460$ , from the limiting viscoplastic flow computations. Figure 7 shows this comparison graphically over a wider range of  $\chi$ , from which we can see a growing discrepancy between the two limits as  $\chi$  increases.

Flow onset for a single bubble in a yield-stress fluid

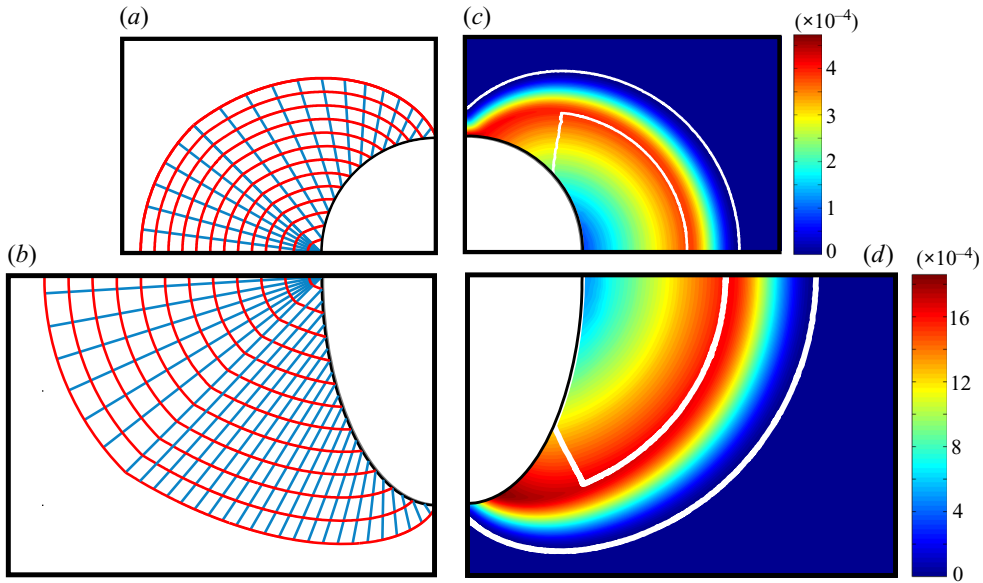


Figure 6. (a,b) Slipline network about a 2-D circular bubble and a 2-D ellipse with  $\chi = 2$ . (c,d) Velocity  $|\mathbf{u}|$  contour;  $Y = 0.17$  and  $Y = 0.255$  for the circular and elliptical bubble, respectively. Unyielded regions are marked with white solid lines.

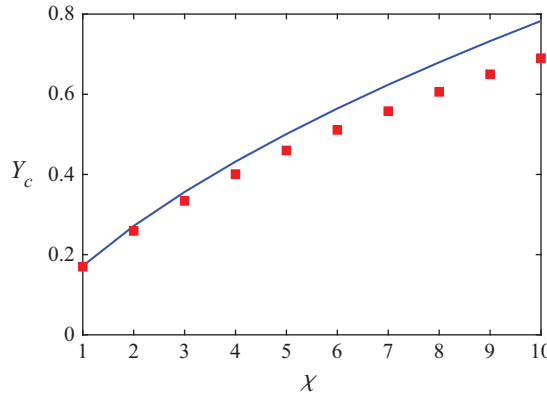


Figure 7. Value of  $Y_c$  vs the aspect ratio for  $\chi \geq 1$ ; the symbols represent the viscoplastic computations and the line is expressions (3.9) and (3.10).

There are two reasons for this discrepancy. First, we should note that the slipline solutions and limiting viscoplastic solutions are not quite simply the same. Although both flows limit to zero motion at  $Y_c$ , the stress fields are not the same. In the viscoplastic solution the yield surfaces bound regions within which the stress is at or below the yield stress. In the perfectly plastic solution the stress is constrained to be at the yield value everywhere within the slipline envelope. The slipline stress field can be used to construct an admissible stress field for the viscoplastic problem (if it can be extended outside the slipline envelope), and using the stress maximisation principle one can infer that this will lead to an upper bound for the viscoplastic  $Y_c$ , as is observed.

The second reason for the discrepancy is that, although it is widely believed that the Randolph & Houlsby (1984) solution is exact (i.e. the lower and upper bounds of the

drag are the same for the whole range of  $\alpha_s$ ), this is not the case. An issue was first detected by Murff, Wagner & Randolph (1989): for  $\alpha_s < 1$ , there is a region in the vicinity of the pile surface in which the rate of strain is negative and its absolute value should consequently be taken into account in calculating the upper bound, to avoid negative plastic dissipation. If one does so, then there is a discrepancy between the lower and upper bounds, i.e. for  $\alpha_s < 1$  the Randolph & Houlsby (1984) solution is not exact for the perfectly plastic problem. Martin & Randolph (2006) postulated two new velocity fields which improved the upper bound predictions to some extent. See Chaparian & Tammissola (2021) for a detailed comparison with the viscoplastic flow about a solid particle. Also Supekar *et al.* (2020) have shown that the Martin & Randolph (2006) solution is indeed superior compared with the lower bound solution.

Note that this does not affect the results here in figure 7, which are taken from (3.9) and (3.10) and use the slipline stress field (the lower bound). Indeed, our conclusion is that the slipline method is a valuable check on computed limiting solutions. It exhibits very similar geometric features and often gives a close estimate to  $Y_c$ . A similar conclusion was reached in our study of solid particles (Chaparian & Frigaard 2017b), for which the Randolph & Houlsby (1984) slipline solution is both correct and exact ( $\alpha_s = 1$ ).

## 4. Results for 2-D bubbles

### 4.1. Elliptic bubbles

Here, we investigate the behaviour of critical yield number ( $Y_c$ ) with respect to both aspect ratio ( $\chi$ ) and the dimensionless surface tension ( $\gamma$ ) for 2-D elliptical bubbles described by (3.3). The range of aspect ratios considered are between 0.1 and 10 and the range of surface tensions considered are between 0 and 10. Regarding realistic values of ( $\chi$ ) and ( $\gamma$ ), there are two main sources of information. First, we refer to the discussion of different static bubble shapes in § 1. Second, we can look at experimental studies of rising bubbles in yield-stress fluids (Dubash & Frigaard 2007; Sikorski *et al.* 2009; Lopez *et al.* 2018; Pourzahedi *et al.* 2021), where they find aspect ratios 0.2–5, and  $\gamma$  in the range 0.01–0.5. Evidently, experimental bubble shapes are not elliptical (nor planar) and we also note that moving bubbles in experiments tend to be larger than stationary (increased buoyancy). Thus, our range of parameters is practically motivated. In order to find  $Y_c$ , we vary the yield number until the flow field reaches zero everywhere in the domain using the computational methods discussed in previous section.

Figure 8 shows how the critical yield number varies with aspect ratio for different surface tension parameters  $\gamma$ . For  $\gamma = 0$ ,  $Y_c$  increases with  $\chi$ : prolate bubbles ( $\chi > 1$ ) can flow easier compared with oblate bubbles ( $\chi < 1$ ). One physically intuitive interpretation of the increases is that, for increasing  $\chi$ , the bubbles create a static pressure differential proportional to their height: a higher yield stress is consequently required to overcome the stresses created. The height of the bubble scales with  $\sqrt{\chi}$ , which is approximately the slope of the  $\gamma = 0$  curve. Although attractive in its simplicity, the same explanation does not account for our axisymmetric results later, which suggests that there is more going on here and a different explanation needed. We consider  $\chi < 1$  and  $\chi > 1$  separately.

For  $\chi < 1$ , it is apparent that, in order for the bubble to propagate, the fluid must move around an increasingly wide obstacle as  $\chi \rightarrow 0$ . Primarily the bubble pushes the fluid out of the way, suggesting that normal stresses at the interface are important and tangential stresses less relevant. In this sense oblate bubbles and particles may be similar in their yield limit behaviour. In Chaparian & Frigaard (2017b), the yield limit of planar elliptical particles for  $\chi \ll 1$  varies as  $Y_c \sim \chi^{0.5}$ , just as here. However, the rigid particle displaces

## Flow onset for a single bubble in a yield-stress fluid

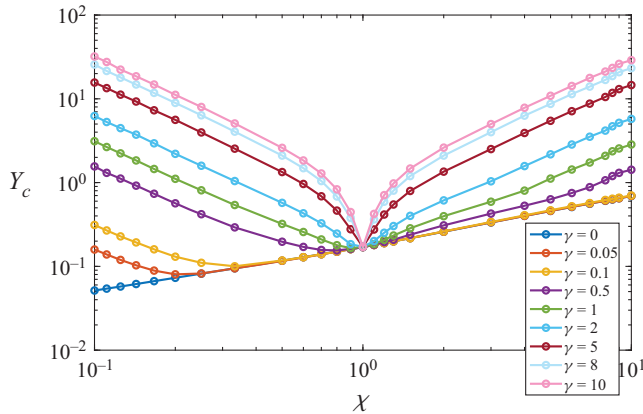


Figure 8. Critical yield number against aspect ratio for various surface tensions for elliptic bubbles.

a triangular region of unyielded fluid ahead of it, which then pushes a ring of fluid around the particle at constant speed; see figure 10(c) in Chaparian & Frigaard (2017b). This simple flow structure allows us to estimate  $Y_c$  directly for the particle.

When we explore the flow around the bubble as  $Y \sim Y_c$ , for  $\chi < 1$ , we observe that the yielded fluid is confined within two disks of approximate radius  $\sqrt{2/\chi}$ , centred at the ends of the bubble. This feature is just like the flow around elliptical particles. Unlike the rigid particle, the flow is significantly less structured, without sharp gradients. This prevents us from easily deriving an approximation to  $Y_c$ , but the order of  $Y_c$  as  $\chi \rightarrow 0$  can be estimated. From (2.14), we see that  $Y_c \approx L(\mathbf{u})/j(\mathbf{u})$  for the limiting solutions  $\mathbf{u}$ . If  $U_b$  represents the mean bubble rise velocity, then we also have  $L(\mathbf{u}) \sim U_b$ , due to incompressibility. The bubble width is  $2a$ , also giving the length scale of the yielded region. The strain rate is likely to scale with  $U_b/a$  within the yielded region, leading to  $j(\mathbf{u}) \sim U_b/a \times a^2 = aU_b$ . Dividing through we have  $Y_c \approx L(\mathbf{u})/j(\mathbf{u}) \sim 1/a \sim \chi^{0.5}$ , as we have observed.

In contrast, for  $\chi > 1$  we cannot expect that the bubble yield limit behaves as the particle yield limit. The particle is strongly influenced by a thin yielded boundary layer (Chaparian & Frigaard 2017b; Hewitt & Balmforth 2018). For  $Y \sim Y_c$ , we find that for tall bubbles much of the bubble surface is covered by an unyielded plug that moves slowly downwards as the bubble slips against it. This plug region is surrounded by a yielded shear layer and then bounded by the outer yield envelope. In the shear layer the shear stress  $\|\boldsymbol{\tau}\|$  exceeds the yield stress  $Y$ . We may suppose that  $\|\dot{\boldsymbol{\gamma}}\| \sim (\|\boldsymbol{\tau}\| - Y) \propto dK$ , where  $d$  represents the distance from the outer yielded envelope to the inner plug, and  $K$  is the size of the pressure gradient oriented along the flow in the shear layer. Thus, now  $j(\mathbf{u}) \sim d^2K\chi^{0.5}$ , if we estimate the shear layer as having size  $d \times \chi^{0.5}$ . For the velocity within the yielded envelope, we integrate once more to find  $|\mathbf{u}| \propto d^2K$  and now integrate over the entire region within the yielded envelope to give  $L(\mathbf{u}) \sim d^2K\chi$ , i.e. not only across the width of the shear layer. Note that both the height and width of the yielded envelope appear to scale with  $\chi^{0.5}$ . Thus again we find  $Y_c \approx L(\mathbf{u})/j(\mathbf{u}) \sim \chi^{0.5}$ .

For  $\gamma > 0$  we see a departure from the  $\gamma = 0$  curve. Surface tension has no effect at  $\chi = 1$ , and deviation from the  $\gamma = 0$  curve is more abrupt for larger  $\gamma$ . As  $\gamma$  increases, the curves become increasingly symmetrical about  $\chi = 1$ , meaning that deformation occurs mainly due to surface tension. This behaviour is better illustrated in figure 9, where  $Y_c$  is plotted with respect to  $\gamma$  for various aspect ratios. It can be observed that the  $Y_c$  values

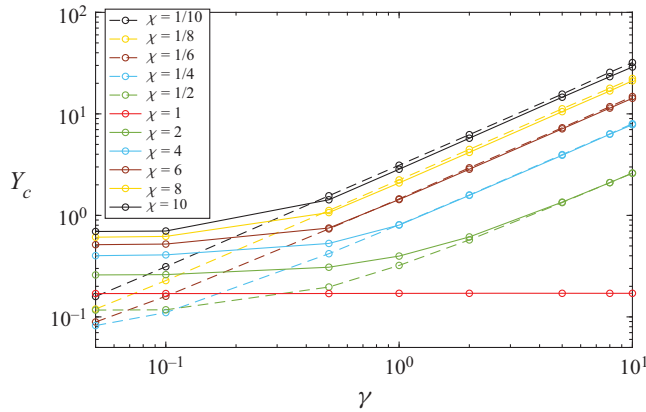


Figure 9. Critical yield number against surface tension for various aspect ratios of elliptic bubbles;  $\chi < 1$  is plotted in dotted lines.

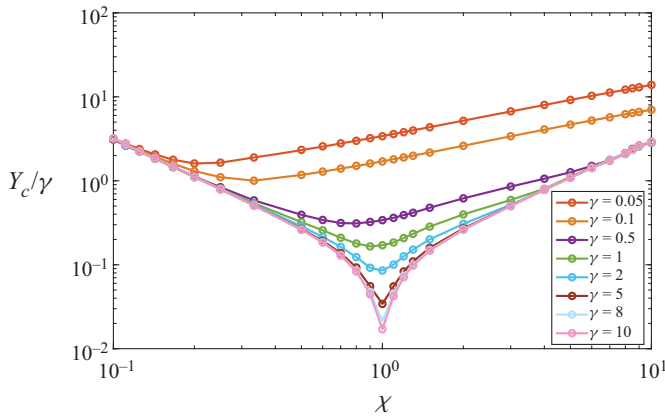


Figure 10. Yield-capillary number against aspect ratio for various surface tensions for elliptic bubbles.

for specific  $\chi$  and  $1/\chi$  collapse on each other for high values of  $\gamma$  (e.g.  $\chi = 2, 0.5$ ). The overlap of the curves for  $\chi$  and  $1/\chi$  in [figure 9](#) suggests that the high curvature of the more pointed ends of the bubble leads to a dominant effect on the stress field that must be resisted by the yield stress. Therefore, eventually we expect to find a direct balance between yield stress and surface tension. The ratio of yield number to surface tension is the yield-capillary number discussed earlier. The critical value with respect to aspect ratio is plotted for various values of  $\gamma$  in [figure 10](#). As  $\gamma \rightarrow \infty$  the curves appear to collapse to a limiting curve, confirming this interpretation. We may also evaluate the maximal curvature of the bubble, as a function of  $\chi$ , which occurs at the top and bottom for  $\chi > 1$  and at the sides for  $\chi < 1$ . We find that the maximal contribution of the surface tension to the jump in pressures is given by  $\gamma\chi^{1.5}$  for  $\chi > 1$ , and by  $\gamma\chi^{-1.5}$  for  $\chi < 1$ . The symmetry for large/small  $\chi$  is evident in the planar bubble shape. On returning to [figure 8](#), we note that for large  $\gamma$  the slopes of the  $Y_c$ -curves align well with  $\sim \chi^{1.5}$  for  $\chi \gg 1$ , and  $\sim \chi^{-1.5}$  for  $\chi \ll 1$ .

The effect of the surface tension on the velocity field around moving bubbles, with  $\chi = 2$  and  $\chi = 0.5$ , is depicted in [figure 11\(a-h\)](#). In all cases, the yield number is selected to satisfy  $1 - Y/Y_c = 0.1$ . It can be seen that velocity magnitudes increase with surface



## Flow onset for a single bubble in a yield-stress fluid

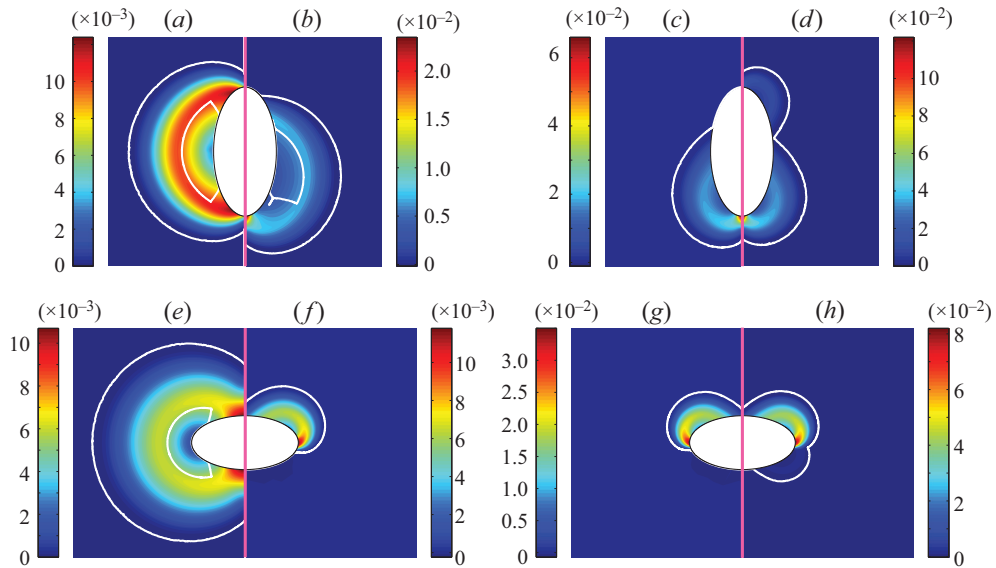


Figure 11. Velocity field around an elliptical bubble for the cases of  $\chi = 2$  (a–d) and  $\chi = 0.5$  (e–h), for  $\gamma$  equal to: 0 (a,e), 1 (b,f), 5 (c,g) and 10 (d,h). In all cases, the yield number satisfies  $1 - Y/Y_c = 0.1$ .

tension for both aspect ratios, suggesting that larger yield number is required to immobilise the bubble at higher surface tension values. We emphasise that these velocity fields do not represent steadily moving bubbles, but are simply Stokes flow solutions for these specific shapes. In the case of  $\gamma = 0$  for both aspect ratios the flow field as well as the unyielded regions are symmetrical in the upper and lower halves of the bubble (figure 11a,e). For the case of  $\chi = 2$ , in addition to the outer field unyielded region, an unyielded region forms around the bubble equator at low surface tensions, and the yielded fluid circulates from the top to bottom in the pathway between the two regions (figure 11b). Interestingly, the unyielded region attached to the equator shrinks as surface tension increases, and the outer unyielded region surrounds the lower tip (figure 11c). This can be explained by considering the role of surface tension in defining the bubble shape. Surface tension tends to push the bubble boundary into its equilibrium shape (i.e. circle). In the lower half, buoyancy and surface tension forces add up as they both push upwards. However, in the upper half of the bubble, the surface tension force changes direction and pulls downwards. Therefore, they cancel each other out partly. Thus, higher yield stress is required to immobilise the lower half of the bubble compared with the upper half. Further increasing the surface tension creates stronger forces at the tips, which again starts to yield the fluid around the upper tip of the bubble (figure 11d). The unyielded region in the lower half is larger than the upper half due to the same reason explained above.

For the case of  $\chi = 0.5$ , similarly, the unyielded region attached to the bubble equator shrinks as surface tension increases. The shape of the unyielded region can be justified using the same logic as before. In the upper half both the surface tension and buoyancy forces are pointing upwards. However, in the lower half, buoyancy is still pointing upwards while the surface tension is acting downwards, therefore they counteract each other. Thus the upper half requires more yield stress to become immobilised (figure 11f). Further increasing the surface tension yields the fluid around the bottom half and induces a new unyielded region.

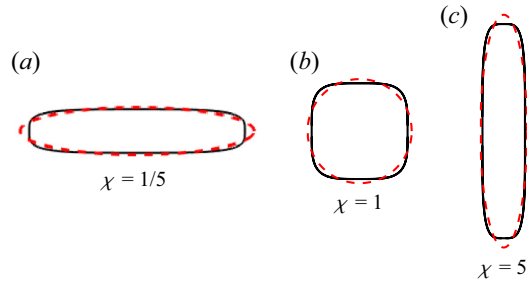


Figure 12. Illustration of quartic (black line) and elliptical bubble (discontinuous red) shapes at various aspect ratios.

#### 4.2. Long bubbles

To give a second geometry we explore bubbles with quartic profile. To clarify, the interface is given by

$$(x/a)^4 + (y/b)^4 = 1, \quad (4.1)$$

with an area equal to  $\pi$ . We denote the aspect ratio  $b/a = \chi$  and again investigate the variation of  $Y_c$ , with  $\chi$  and  $\gamma$ . A selection of shapes are shown in figure 12. Here, we just note that  $\chi = 1$  does not give a circular shape and in general these bubbles are more rectangular, with rounded corners, in comparison with the elliptical bubbles. As an aside, we first tried some computations of long straight-sided bubbles with semi-circular ends. However, the jump in curvature (between circular cap and straight sides) created unphysical behaviour when  $\gamma > 0$ , whereas the quartic profile is smooth.

Looking at figures 13 and 14 we see a qualitatively similar behaviour of  $Y_c$ . It can be observed again that higher  $Y_c$  is required to stop the flow as  $\gamma$  increases. For low values of  $\gamma$ , buoyancy dominates the flow regime and figure 13 shows that the vertically oriented bubbles are more difficult to stop. Analogous to elliptical bubbles,  $Y_c$  values for any specific  $\chi$  and its inverse  $1/\chi$  collapse on each other for high values of  $\gamma$ . As before, the regions of largest curvature dominate as  $\gamma$  increases and orientation becomes unimportant. This observation appears to be quite general and also not confined to these two specific orientations. Figure 15 demonstrates that for high values of surface tension, the critical yield-capillary numbers tend to converge to a single curve.

Same example velocity fields around representative quartic bubbles are shown in figure 16. At  $\gamma = 0$  we again observe fore–aft symmetry, broken only by the surface tension. For the larger values of  $\gamma$  the main velocity gradients are near the ends of bubble. Close inspection (figure 16d,h), reveals that the peak velocities are generated just off centreplane where curvature effects are maximal.

For both the 2-D elliptical and quartic bubbles the behaviour of the critical yield number with  $\gamma$  appears to follow the same trend, in being progressively dominated by the regions of high curvature. Looking at figure 17, when  $\chi > 1$ , we find that  $Y_c$  has a power-law behaviour for high  $\gamma$ , ( $Y_c = A\gamma^B$ ), and is constant for small  $\gamma$ , ( $Y_c = C$ ). The values of coefficients  $A$  and  $B$  for two sample aspect ratios of  $\chi = 2, 10$  are listed in table 1. Evidently, the exponent  $B \approx 1$  as is expected from physical grounds (for large  $\gamma$  when surface tension dominates buoyancy, in order to prevent motion the yield stress must balance surface tension).

When  $\chi < 1$ ,  $Y_c$  can be approximated with the same power-law behaviour of the equivalent vertical aspect ratio (i.e. that fitted to the data for  $1/\chi$ ) almost over the whole

*Flow onset for a single bubble in a yield-stress fluid*

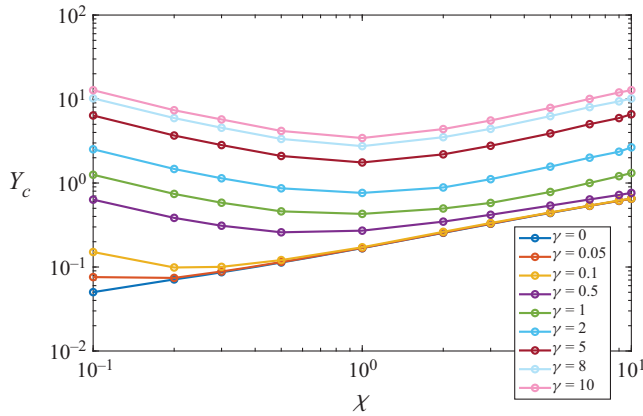


Figure 13. Critical yield number against aspect ratio for various surface tensions for quartic bubbles.

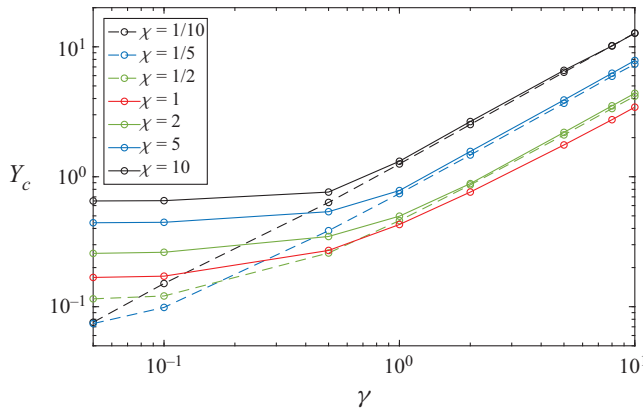


Figure 14. Critical yield number against surface tension for various aspect ratios of quartic bubbles;  $\chi < 1$  is plotted in dotted lines.

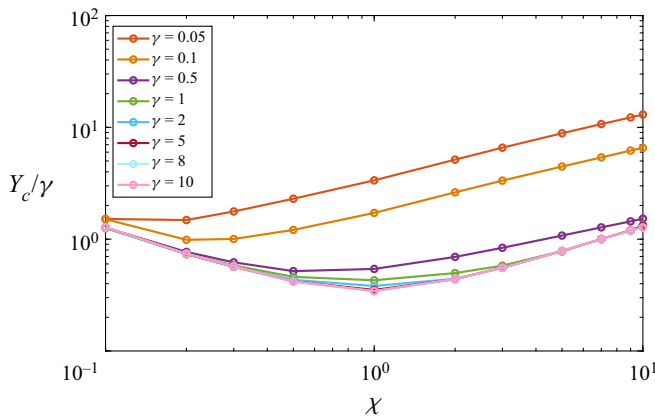


Figure 15. Yield-capillary number against aspect ratio for various surface tensions for quartic bubbles.

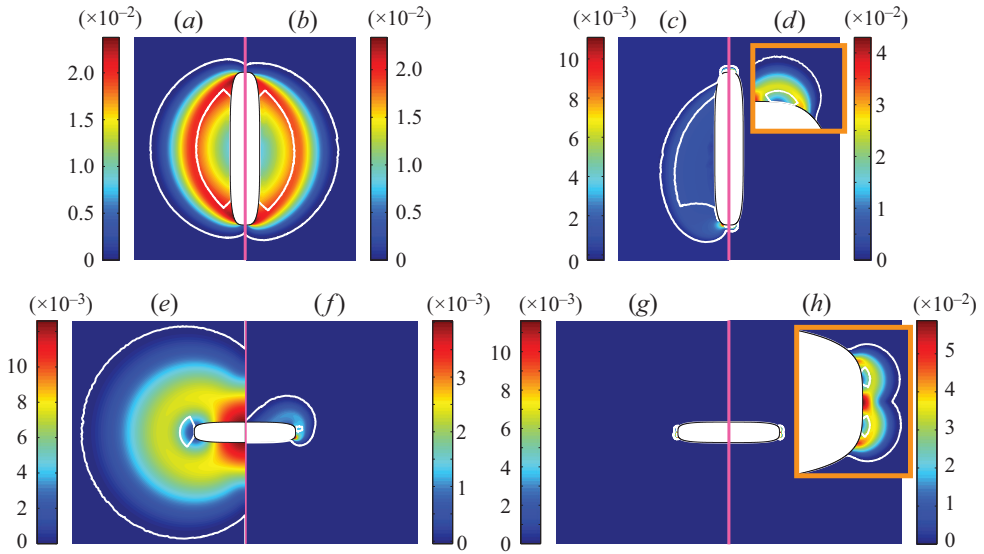


Figure 16. Velocity field around quartic bubbles for the cases of  $\chi = 6$  (a–d) and  $\chi = 1/6$  (e–h), for  $\gamma$  equal to: 0 (a,e), 0.1 (b,f), 1 (c,g) and 5 (d,h). In all cases, the yield number satisfies  $1 - Y/Y_c = 0.1$ .

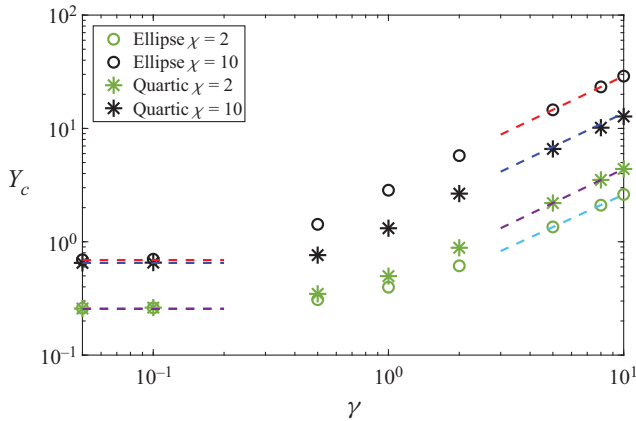


Figure 17. Behaviour of the critical yield number with respect to surface tension for sample aspect ratios of  $\chi = 2, 10$ . For high  $\gamma$  this behaviour is almost linear, but for low  $\gamma$  it is constant.

	A	B	C
Ellipse ( $\chi = 2$ )	0.29	0.95	0.26
Ellipse ( $\chi = 10$ )	2.98	0.99	0.69
Quartic ( $\chi = 2$ )	0.44	1.00	0.25
Quartic ( $\chi = 10$ )	1.40	0.96	0.65

Table 1. Example curve fit coefficients for 2-D elliptical and quartic bubble shapes;  $Y_c = A\gamma^B$  for high values of  $\gamma$ , and  $Y_c = C$  for small values of  $\gamma$ .

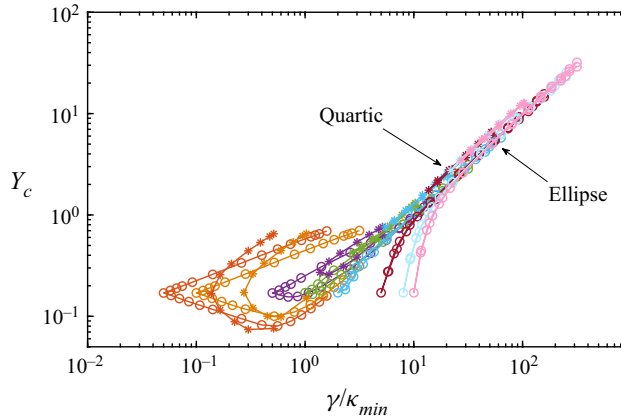


Figure 18. Value of  $Y_c$  plotted with respect to the ratio of  $\gamma$  and the minimum radius of curvature ( $\kappa_{min}$ ) for the 2-D elliptical ( $\circ$ ) and quartic ( $*$ ) bubbles. The colour interpretation is the same as figure 15.

range of  $\gamma$ . We have already seen this symmetry and data collapse in e.g. figures 13 and 14. To emphasise and confirm that the effect of curvature is the leading order, we have computed the minimal radius of curvature  $\kappa_{min}$  for each shape as a function of  $\chi$ . We then plot  $Y_c$  against  $\gamma/\kappa_{min}$  for all our data, for both the ellipses and quartic bubbles; see figure 18. The colour interpretation is the same as figure 15. Circles and stars are used for the elliptical and quartic bubbles, respectively. We observe that the data collapse onto the same curve at large  $\gamma/\kappa_{min}$ . There is a slight offset for the two families of bubble shapes.

### 5. Axisymmetric bubbles

To obtain a more realistic quantitative estimate of the yield criterion, we look at similar problems but using an axisymmetric version of our codes. Figure 19 shows the contours of the speed, the log of the rate of strain tensor and the hoop strain rate. In the axisymmetric bubbles the large kidney shaped unyielded regions attached to the bubble surface are absent due to the hoop strain rate, which we see is non-zero here, except on the equator. This gives a very small unyielded region at the equator, made possible due to the slip at the bubble surface. Note that in the case of the solid spherical particle (Beris *et al.* 1985; Iglesias *et al.* 2020) where there is a no-slip condition, these regions are absent (although present in 2-D planar flows away from the surface).

Figure 20 plots  $Y_c$  against  $\chi$  for ellipsoidal bubbles. Here, the ellipsoids are constructed by rotating the shape (3.3) about the  $y$ -axis

$$\frac{x^2}{a^2} + \frac{y^2}{b^2} + \frac{z^2}{a^2} = 1, \quad a^2 b = 1; \tag{5.1}$$

(gravity aligns with the  $-y$  axis). Thus,  $\chi = b/a$  has the same meaning as in two dimensions, viz., the bubble aspect ratio. When  $\chi = 1$  then  $a = b = 1$  which is the scaled spherical bubble radius. When  $\gamma = 0$ , as with the 2-D bubbles, prolate bubbles ( $\chi > 1$ ) are harder to stop than oblate ( $\chi < 1$ ). For the spherical bubble  $Y_c$  is independent of the surface tension, as also recently stated by Deoclecio *et al.* (2021). At first glance the ellipsoidal results qualitatively resemble those earlier in figure 8 for planar bubbles.

For  $\gamma = 0$ , the slope of  $Y_c$  in figure 20 changes, from  $\sim \chi^{2/3}$  for  $\chi \ll 1$  to  $\sim \chi^{0.47}$  for  $\chi \gg 1$ . As the bubble height now scales with  $b \sim \chi^{2/3}$  the arguments for static

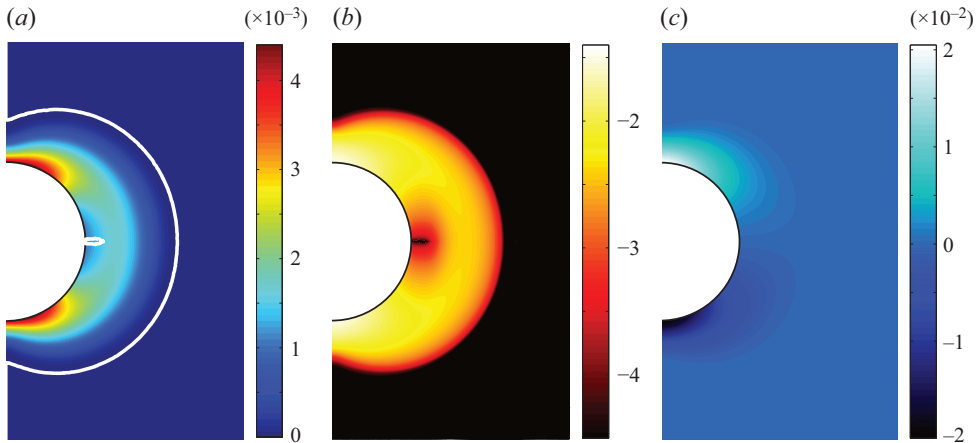


Figure 19. Axisymmetric spherical bubble at  $Y = 0.125$ : (a) velocity field, (b)  $\log(\|\dot{\boldsymbol{\gamma}}\|)$  and (c)  $\dot{\gamma}_{\theta\theta}$ .

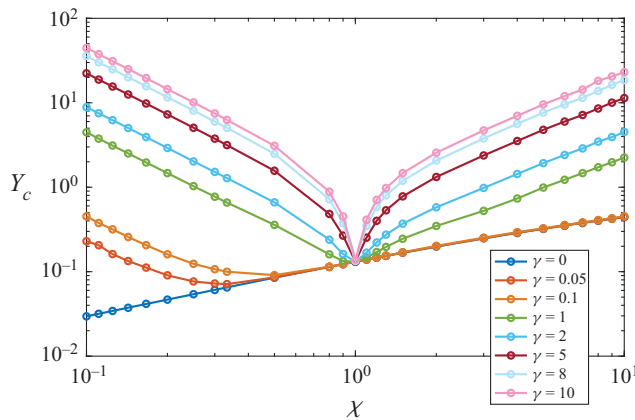


Figure 20. Critical yield number against aspect ratio for various surface tensions for ellipsoidal bubbles.

pressure governing  $Y_c$  are inadequate for prolate bubbles, and seem non-intuitive for oblate bubbles. Effectively, the flow characteristics and 3-D volumetric effects must come into play. Fortunately, the functional analytic framework developed is valid and we may expect that  $Y_c \approx L(\mathbf{u})/j(\mathbf{u})$  for  $\mathbf{u}$  that are close to the solution at the yield limit. We may now construct a phenomenological explanation for the asymptotic behaviour observed. For oblate bubbles, we observe the largest velocities are directly above/below the bubbles, where fluid is pushed out of the way and this is also where significant velocity gradients are found. We therefore have  $\|\dot{\boldsymbol{\gamma}}\| \sim U_b/a$  and consequently  $j(\mathbf{u}) \sim a^3 U_b/a = a^2 U_b$ , where  $U_b$  represents the mean bubble rise velocity. On the other hand, since the fluids are considered incompressible, we also have  $L(\mathbf{u}) \sim U_b$ , i.e. what flows up must flow down, meaning that  $L(\mathbf{u})/j(\mathbf{u}) \sim 1/a^2 \sim \chi^{2/3}$  as we have observed.

For  $\chi > 1$  we generally find that the largest speeds are found near the two ends of the bubble, but decay outwards to the boundary of the yielded envelope. If we denote the outer radius of the yield envelope at  $y = 0$  by  $R_\perp$  we find that  $R_\perp \gg a$  as  $\chi$  increases. All of the fluid displaced by the bubble must pass through the plane  $y = 0$ . Thus, the fluid velocity scales as  $U_b(a/R_\perp)^2$ . The yielded region around the bubble has height  $\sim b$

## Flow onset for a single bubble in a yield-stress fluid

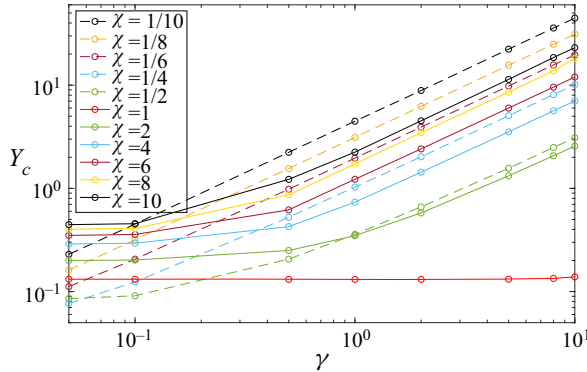


Figure 21. Critical yield number against surface tension for various aspect ratios of ellipsoidal bubbles;  $\chi < 1$  is plotted in dotted lines.

and hence  $L(\mathbf{u}) \sim U_b(a/R_\perp)^2 \times [bR_\perp^2] \sim U_b$ , as must also follow from incompressibility, (note  $a^2b = 1$ ). On the other hand,  $\|\dot{\boldsymbol{\gamma}}\| \sim U_b a^2/R_\perp^3$  so that  $j(\mathbf{u}) \sim U_b/R_\perp$ , from which  $Y_c \approx L(\mathbf{u})/j(\mathbf{u}) \sim R_\perp$ . Examination of  $R_\perp$ , taken from our results for  $\chi > 1$  does indeed show that  $R_\perp \sim \chi^{0.47}$ . This really just establishes consistency of our results, i.e.  $Y_c \sim R_\perp$ , but not the reason for the specific exponent  $\chi^{0.47}$ . In terms of the fit to the data in figure 20, it is worth commenting that for  $\chi > 1$  the fit of the slope to  $\chi^{0.47}$  is not as clean as for  $\chi < 1$  with  $Y_c \sim \chi^{2/3}$ . Extending our computations to the range  $\chi > 10$  would be helpful to better evaluate the asymptotic limit.

Looking now at  $\gamma > 0$ , we see that although  $Y_c$  increases for all  $\chi \neq 1$ , unlike the planar cases the profiles of  $Y_c$  do not become symmetric about  $\chi = 1$ , i.e. comparing  $\chi$  and  $1/\chi$ . This is because for the three-dimensional bubbles  $\chi$  and  $1/\chi$  do not yield the same shape; see (5.1). This is seen more clearly in figure 21 which plots  $Y_c$  against  $\gamma$  for different pairs of  $\chi$  and  $1/\chi$ : the curves that do not overlap directly at large  $\gamma$ . The physical reasoning for the increase is the same as for the planar bubbles: at large  $\gamma$  the dominant contribution to the pressure in the fluid comes from surface tension, and hence buoyancy is only a secondary influence on yielding. This is captured in figure 22, which demonstrates that for high values of surface tension, the critical yield-capillary numbers tend to collapse onto the same limiting curve. It is also interesting to note that the  $Y_c$  values for small  $\chi$  are larger than those for large  $\chi$ , i.e. comparing values for  $\chi$  and  $1/\chi$ . This is a purely geometric effect of viewing the change in shape via the aspect ratio  $\chi$ . For the oblate ellipsoids, as  $\chi \ll 1$  there is a single minimal radius of curvature that scales as  $\chi^{5/3}$ , so that the pressure jump at the interface is of order  $\sim \gamma \chi^{-5/3}$ . For the prolate ellipsoids, as  $\chi \gg 1$  there are two identical minimal radii of curvature that scale as  $\chi^{-4/3}$ , leading to a pressure jump at the interface that is of order  $\sim \gamma \chi^{4/3}$ . When we compare the slopes of the curves for large  $\gamma$  in figure 20 we do indeed find  $Y_c \sim \chi^{-5/3}$  and  $Y_c \sim \chi^{4/3}$  for small and large  $\chi$ , respectively.

To allow comparison of the velocity fields with the 2-D planar results, we compute the flows around the same aspect ratio ellipsoids as in figure 11. Largely, we see the same behaviour as for the 2-D planar elliptical bubbles, with the exception of the yield surfaces around the bubble equator (see figure 23). There also seems to be much less rigid rotational motion around the bubble surface, which is likely due to the additional hoop strain rate component.

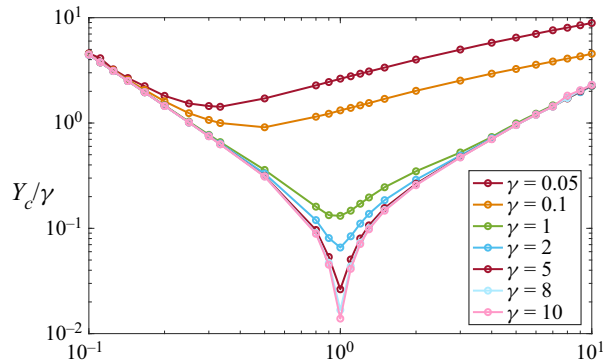


Figure 22. Yield-capillary number against aspect ratio for various surface tensions for ellipsoidal bubbles.

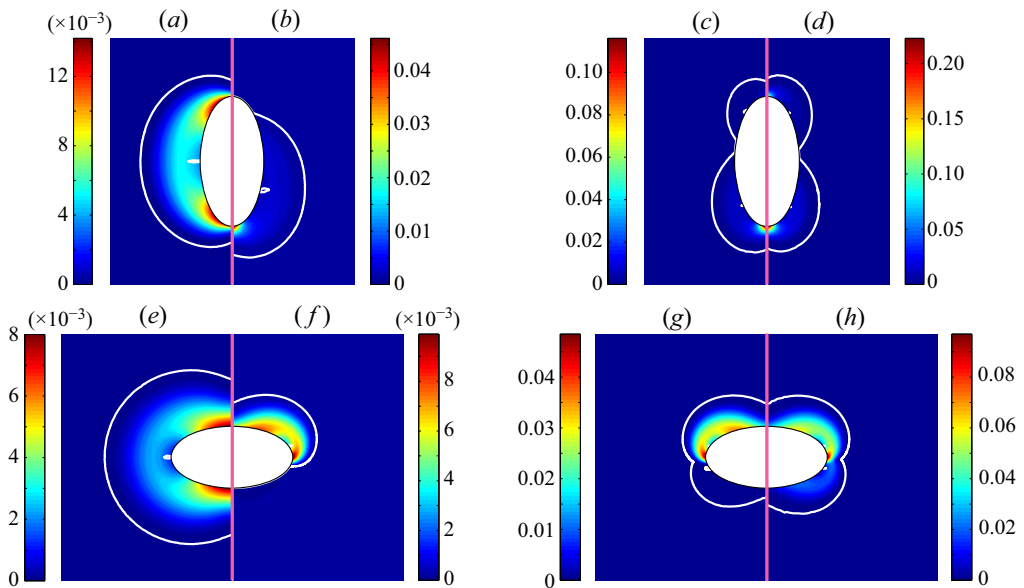


Figure 23. Velocity field around axisymmetric ellipsoidal bubbles for the cases of  $\chi = 2$  (a–d) and  $\chi = 0.5$  (e–h), for  $\gamma$  equal to: 0 (a,e), 1 (b,f), 5 (c,g) and 10 (d,h). In all cases, the yield number satisfies  $1 - Y/Y_c = 0.1$ .

Finally, we have also modelled bubble shapes that resemble the inverse teardrop shape often observed. We use the following basic parameterisation of the surface:

$$x = a \cos(t), \quad y = b \sin(t) + c(1 + \cos(2t)), \quad (5.2a,b)$$

where  $t \in [-\pi/2, \pi/2]$ . This shape is rotated about the  $y$ -axis. Adjusting the coefficients enables us to obtain various aspect ratios and the whole shape is scaled to give the correct volume. Here, we present two aspect ratios ( $\chi = b/a = 1$  and  $2$ ) and two surface tension values ( $\gamma = 0, 1$ ). As seen in figure 24, the velocity is focused more at the tail of the bubble, and hence the yield surface is also oriented towards the tail. This is also where the radius of curvature is lowest. This behaviour is most apparent in figure 24(d). Note that these bubbles are mobile and we are relatively far from  $Y_c$ . The large velocity gradients (hence stress) at the bubble tail suggest that these bubbles will deform significantly here. In other words, steady propagation of a shape such as these is not possible. Since steady



Flow onset for a single bubble in a yield-stress fluid

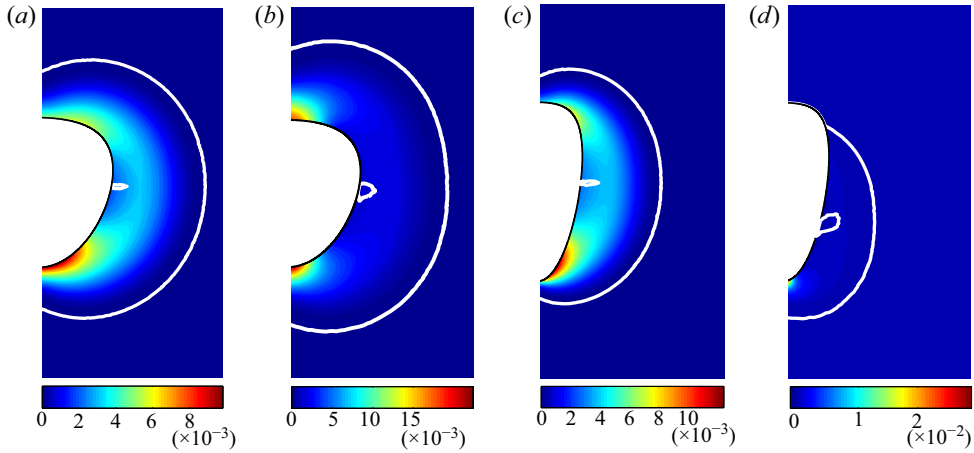


Figure 24. Velocity field around an axisymmetric teardrop bubble: (a,b)  $\chi = 1$  and  $c/a = 0.15$ , (c,d)  $\chi = 2$  and  $c/a = 0.4$ . The surface tension ( $\gamma$ ) equals to (a,c) 0 and (b,d) 1. In all cases, the yield number satisfies  $1 - Y/Y_c = 0.1$ .

$\chi$	0.2	1	5
Two-dimensional ellipse	0.073	0.172	0.460
Ellipsoid	0.047	0.132	0.321

Table 2. Sample computed  $Y_c$  for single 2-D ellipses and axisymmetric ellipsoid shapes for the case of  $\gamma = 0$ .

bubble motion of similar shapes is actually observed experimentally (see e.g. figure 6 in Pourzahedi *et al.* 2021), this supports the suggestion often made, that other rheological effects are responsible for the tail.

### 6. Discussion and conclusions

This paper studied the critical yield number required to stop the motion of different bubble shapes, studying a wide range of aspect ratios and surface tension values. The computations have been conducted using both AL and FISTA algorithms, both of which are able to capture zero strain rates reliably in unyielded regions. Coupled with the adaptive meshing methods, these capture the yield surfaces well, as has been the case with many other flows. The good agreement between methods confirms the reliability of our results. Slipline theory has also been used to validate the results for 2-D elliptical bubbles for the case of no surface tension, providing a close upper bound for  $Y_c$ . Table 2 presents the results of  $Y_c$  for sample aspect ratios of  $\chi = 0.2, 1, 5$  in the absence of surface tension. For the case of a 2-D circle, Singh & Denn (2008) have reported a value of 0.167. For the case of a sphere, Tsamopoulos *et al.* (2008), Dimakopoulos *et al.* (2013) and Deoclecio *et al.* (2021) have reported values of 0.143, 0.129 and 0.133, respectively. There is good agreement for the critical yield number between previous studies and our data. Thus, the results tabulated in table 2 can be used as benchmarks for future computational studies. Slightly different, Karapetsas *et al.* (2019) have found a value of 0.175 for a spherical bubble using an analytical solution based on a Lagrangian formalism.

The shapes studied include 2-D elliptic and quartic, axisymmetric ellipsoidal and inverted teardrop. There are common qualitative features of the results as the aspect ratio is varied and as the surface tension comes to dominate buoyancy. Regarding the effect of aspect ratio on the critical yield number, it was found that when the flow is buoyancy dominated, prolate bubbles require more yield stress to remain stationary compared with oblate bubbles. However, when the flow is surface tension dominated, a similar yield stress is required to stop the motion of both vertical and horizontal bubbles. The critical yield number was found to increase with surface tension. As surface tension becomes dominant, the yield capillary number is the relevant balance to study.

As approximate guidance, a 1.5 Pa yield-stress is sufficient to hold a spherical bubble of 1 mm diameter static in an aqueous gel. A prolate bubble of the same volume with a 3 : 1 aspect ratio would require a 3 Pa yield stress in the absence of surface tension and this could be many times larger for  $\gamma > 0$ . Yield stresses of waste slurries vary enormously over the range  $\sim 1\text{--}10^3$  Pa, depending on many factors. Surface tension values are more constrained and small radii of curvature are generally accompanied by small volumes, i.e. buoyancy. Thus, some care is needed in interpretation.

It is interesting to reflect on how to validate/compare our results with experiments and their broader relevance. First, it is hard to compare with many results of experiments with moving bubbles. Bubble motion in experiments usually needs some form of injection into a yield-stress fluid. Both injection (Sikorski *et al.* 2009; Lopez *et al.* 2018; Pourzahedi *et al.* 2021) or over-pressure (Zare & Frigaard 2018) are common, but in both cases there is a transient motion associated with the release/pinch-off. The bubble typically then deforms quickly on release towards a steady propagation shape. Thus, we are typically far from the critical conditions. Ongoing work instead looks at using a small seed bubble in fluid within a vacuum chamber. Pressure reduction increases the volume, but the pinch-off/release/invasion steps are eliminated and viscoelastic effects do not have time to manifest in the initial shapes.

A second point of reflection is on the meaning of the results at large/small aspect ratio, where surface tension dominates. For example, with fixed yield stress a sufficiently long/thin bubble will not be static. Does this mean it will be released? Not necessarily, as the yielded flow will deform under the action of surface tension. Where surface tension is dominant, we presume the tendency is to pull the bubble towards circular/spherical shapes, which we have seen are more stable. It is certainly conceivable that the initial deformation results in bubbles that do not rise significantly before the shape adapts. This is a limitation of our work in only calculating steady flows.

The results on the shape and aspect ratio are also interesting in the context of more complex distributions of bubbles, such as in figure 1, or in the industrial waste contexts that motivated this study. If the bubble release is due to a bulk effect, such as lowering of pressure or degradation of the rheology, we see that the angular and long aspect ratio bubbles are likely to deform first. With a cyclic atmospheric variation this could result in some release but also a refinement/homogenisation of the shapes and sizes of the remaining retained bubble distribution. Does nature help in this way and could this cyclic procedure be imposed industrially? If the aim is to retain bubbles, use of surfactant to reduce  $\gamma$  might also be an effective strategy. Indeed, the case  $\gamma = 0$  appears to be the best case scenario from the bubble trapping perspective. Other effects of bubble clouds on  $Y_c$  are studied in Chaparian & Frigaard (2021).

**Funding.** This research has been carried out at the University of British Columbia (UBC). Financial support for the study was provided by IOSI/COSIA and NSERC (project numbers CRDPJ 537806-18 and IOSI Project 2018-10). This funding is gratefully acknowledged. The authors also express their gratitude to the University of

## Flow onset for a single bubble in a yield-stress fluid

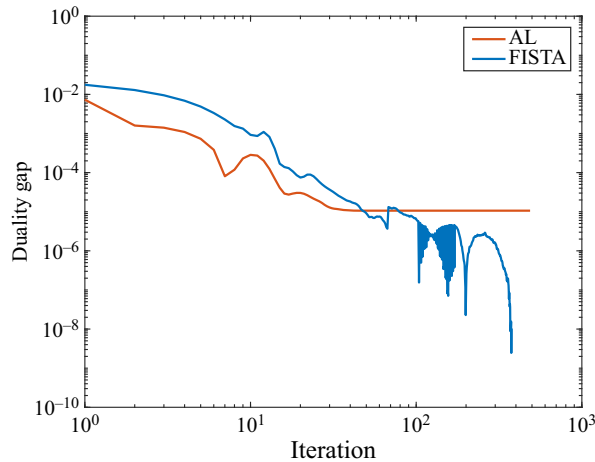


Figure 25. Comparing the duality gap of AL and FISTA methods.

British Columbia for financial support via the 4YF scholarship (A.P.). A.R. acknowledges the financial support by Iran's national science foundation (INSF) through contract 97013654. This computational research was also partly enabled by infrastructure provided by Compute Canada/Calcul Canada ([www.computecanada.ca](http://www.computecanada.ca)).

**Declaration of interests.** The authors report no conflicts of interest.

### Author ORCIDs.

 Emad Chaparian <https://orcid.org/0000-0002-5397-2079>;

 Ian A. Frigaard <https://orcid.org/0000-0002-0970-240X>.

## Appendix. Comparison of AL and FISTA methods

Here, we illustrate convergence behaviour of the two numerical methods used in this paper (i.e. AL and FISTA) for the case of a 2-D circular bubble. The difference between the velocity minimisation (primal) and stress maximisation (dual) functionals, also known as the duality gap, is plotted for successive iterations in [figure 25](#). As investigated by [Treskatis et al. \(2018\)](#), in both methods the duality gap will shrink successively but the convergence of FISTA is superior, as is clear from [figure 25](#).

In terms of the velocity fields or yield surface positions, the differences are not discernible. Both algorithms are operating with the exact Bingham model, as opposed to a regularisation approach, and thus approximate the rigid unyielded regions correctly, which is the main point for computations that explore stopping/static flows. Practically speaking, in terms of computing the static limits and yield surface shapes, as here, more relevant than the (FISTA or AL) algorithm is the number of the mesh adaptations used.

## REFERENCES

- AHMADI, A. & KARIMFAZLI, I. 2021 A quantitative evaluation of viscosity regularization in predicting transient flows of viscoplastic fluids. *J. Non-Newtonian Fluid Mech.* **287**, 104429.
- ASTARITA, G. & APUZZO, G. 1965 Motion of gas bubbles in non-Newtonian liquids. *AIChE J.* **11** (5), 815–820.
- BALMFORTH, N., FRIGAARD, I.A. & OVARLEZ, G. 2014 Yielding to stress: recent developments in viscoplastic fluid mechanics. *Annu. Rev. Fluid Mech.* **46**, 121–146.
- BERIS, A.N., TSAMOPOULOS, J., ARMSTRONG, R.C. & BROWN, R.A. 1985 Creeping motion of a sphere through a Bingham plastic. *J. Fluid Mech.* **158**, 219–244.

- BOUDREAU, B.P. 2012 The physics of bubbles in surficial, soft, cohesive sediments. *Mar. Petrol. Geol.* **38** (1), 1–18.
- BURGOS, G., ALEXANDROU, A. & ENTOV, V. 1999 On the determination of yield surfaces in Herschel–Bulkley fluids. *J. Rheol.* **43** (3), 463–483.
- CHAKRABARTY, J. 2012 *Theory of Plasticity*. Butterworth-Heinemann.
- CHAPARIAN, E. & FRIGAARD, I.A. 2017a Cloaking: particles in a yield-stress fluid. *J. Non-Newtonian Fluid Mech.* **243**, 47–55.
- CHAPARIAN, E. & FRIGAARD, I.A. 2017b Yield limit analysis of particle motion in a yield-stress fluid. *J. Fluid Mech.* **819**, 311–351.
- CHAPARIAN, E. & FRIGAARD, I.A. 2021 Clouds of bubbles in a viscoplastic fluid. *J. Fluid Mech.* **927**, R3.
- CHAPARIAN, E., IZBASSAROV, D., DE VITA, F., BRANDT, L. & TAMMISOLA, O. 2020 Yield-stress fluids in porous media: a comparison of viscoplastic and elastoviscoplastic flows. *Meccanica* **55** (2), 331–342.
- CHAPARIAN, E. & NASOURI, B. 2018 L-box—a tool for measuring the “yield stress”: a theoretical study. *Phys. Fluids* **30** (8), 083101.
- CHAPARIAN, E. & TAMMISOLA, O. 2021 Sliding flows of yield-stress fluids. *J. Fluid Mech.* **911**, A17.
- DEOCLECIO, L.H.P., SOARES, E.J., DEKA, H. & PIERSON, J.-L. 2021 Bubble entrapment condition in Bingham materials. *J. Non-Newtonian Fluid Mech.* **295**, 104616.
- DERAKHSHANDEH, B. 2016 Kaolinite suspension as a model fluid for fluid dynamics studies of fluid fine tailings. *Rheol. Acta* **55** (9), 749–758.
- DIMAKOPOULOS, Y., PAVLIDIS, M. & TSAMOPOULOS, J. 2013 Steady bubble rise in Herschel–Bulkley fluids and comparison of predictions via the augmented Lagrangian method with those via the Papanastasiou model. *J. Non-Newtonian Fluid Mech.* **200**, 34–51.
- DUBASH, N., BALMFORTH, N., SLIM, A. & COCHARD, S. 2009 What is the final shape of a viscoplastic slump? *J. Non-Newtonian Fluid Mech.* **158** (1–3), 91–100.
- DUBASH, N. & FRIGAARD, I. 2004 Conditions for static bubbles in viscoplastic fluids. *Phys. Fluids* **16** (12), 4319–4330.
- DUBASH, N. & FRIGAARD, I.A. 2007 Propagation and stopping of air bubbles in Carbopol solutions. *J. Non-Newtonian Fluid Mech.* **142** (1–3), 123–134.
- DUVAUT, G. & LIONS, J.L. 1976 *Inequalities in Mechanics and Physics*. Springer.
- FRIGAARD, I.A. & NOUAR, C. 2005 On the usage of viscosity regularisation methods for visco-plastic fluid flow computation. *J. Non-Newtonian Fluid Mech.* **127** (1), 1–26.
- GAUGLITZ, P.A., RASSAT, S.D., BREDET, P.R., KONYNENBELT, J., TINGEY, S. & MENDOZA, D. 1996 Mechanisms of gas bubble retention and release: Results for Hanford Waste Tanks 241-S-102 and 241-SY-103 and single-shell tank simulants. *Tech. Rep.* Pacific Northwest National Lab.
- GLOWINSKI, R., LIONS, J.L. & TRÉMOLIÈRES, R. 1981 *Numerical Analysis of Variational Inequalities*. North Holland.
- GONZALEZ, R., SHAUGHNESSY, J. & GRINDLE, W. 2000 Industry leaders shed light on drilling riser gas effects. *Oil Gas J.* **98**, 42–43.
- HECHT, F. 2012 New development in Freefem++. *J. Numer. Maths* **20** (3), 251–265.
- HEWITT, D.R. & BALMFORTH, N.J. 2017 Taylor’s swimming sheet in a yield-stress fluid. *J. Fluid Mech.* **828**, 33–56.
- HEWITT, D.R. & BALMFORTH, N.J. 2018 Viscoplastic slender-body theory. *J. Fluid Mech.* **856**, 870–897.
- HILL, R. 1950 *The Mathematical Theory of Plasticity*. Oxford University Press.
- IGLESIAS, J.A., MERCIER, G., CHAPARIAN, E. & FRIGAARD, I.A. 2020 Computing the yield limit in three-dimensional flows of a yield stress fluid about a settling particle. *J. Non-Newtonian Fluid Mech.* **284**, 104374.
- JOHNSON, M., FAIRWEATHER, M., HARBOTTLE, D., HUNTER, T., PEAKALL, J. & BIGGS, S. 2017 Yield stress dependency on the evolution of bubble populations generated in consolidated soft sediments. *AICHE J.* **63** (9), 3728–3742.
- JOHNSON, A., REZMER-COOPER, I., BAILEY, T. & MCCANN, D. 1995 Gas migration: Fast, slow or stopped. *Society of Petroleum Engineers paper series* (SPE-29342-MS).
- JOHNSON, A.B. & WHITE, D.B. 1991 Gas-rise velocities during kicks. *SPE Drilling Engineering* **6** (04), 257–263.
- KARAPETSAS, G., PHOTEINOS, D., DIMAKOPOULOS, Y. & TSAMOPOULOS, J. 2019 Dynamics and motion of a gas bubble in a viscoplastic medium under acoustic excitation. *J. Fluid Mech.* **865**, 381–413.
- LIU, Y., BALMFORTH, N.J., HORMOZI, S. & HEWITT, D.R. 2016 Two-dimensional viscoplastic dambreaks. *J. Non-Newtonian Fluid Mech.* **238**, 65–79.
- LOPEZ, W.F., NACCACHE, M.F. & DE SOUZA MENDES, P.R. 2018 Rising bubbles in yield stress materials. *J. Rheol.* **62** (1), 209–219.

## Flow onset for a single bubble in a yield-stress fluid

- MARTIN, C.M. & RANDOLPH, M.F. 2006 Upper-bound analysis of lateral pile capacity in cohesive soil. *Géotechnique* **56** (2), 141–145.
- MOUGIN, N., MAGNIN, A. & PIAU, J.M. 2012 The significant influence of internal stresses on the dynamics of bubbles in a yield stress fluid. *J. Non-Newtonian Fluid Mech.* **171**, 42–55.
- MURFF, J.D., WAGNER, D.A. & RANDOLPH, M.F. 1989 Pipe penetration in cohesive soil. *Géotechnique* **39** (2), 213–229.
- POURZAHEDI, A., ZARE, M. & FRIGAARD, I.A. 2021 Eliminating injection and memory effects in bubble rise experiments within yield stress fluids. *J. Non-Newtonian Fluid Mech.* **292**, 104531.
- PRAGER, W. 1954 On slow visco-plastic flow. In *Studies in Mathematics and Mechanics*, pp. 208–216.
- PUTZ, A. & FRIGAARD, I.A. 2010 Creeping flow around particles in a Bingham fluid. *J. Non-Newtonian Fluid Mech.* **165** (5), 263–280.
- RANDOLPH, M.F. & HOULSBY, G.T. 1984 The limiting pressure on a circular pile loaded laterally in cohesive soil. *Géotechnique* **34** (4), 613–623.
- ROQUET, N. & SARAMITO, P. 2003 An adaptive finite element method for Bingham fluid flows around a cylinder. *Comput. Meth. Appl. Mech. Engng* **192** (31), 3317–3341.
- ROUSTAEI, A., CHEVALIER, T., TALON, L. & FRIGAARD, I.A. 2016 Non-Darcy effects in fracture flows of a yield stress fluid. *J. Fluid Mech.* **805**, 222–261.
- ROUSTAEI, A. & FRIGAARD, I.A. 2015 Residual drilling mud during conditioning of uneven boreholes in primary cementing. Part 2: steady laminar inertial flows. *J. Non-Newtonian Fluid Mech.* **226**, 1–15.
- SARAMITO, P. & ROQUET, N. 2001 An adaptive finite element method for viscoplastic fluid flows in pipes. *Comput. Meth. Appl. Mech. Engng* **190** (40–41), 5391–5412.
- SIKORSKI, D., TABUTEAU, H. & DE BRUYN, J. 2009 Motion and shape of bubbles rising through a yield-stress fluid. *J. Non-Newtonian Fluid Mech.* **159** (1–3), 10–16.
- SINGH, J.P. & DENN, M. 2008 Interacting two-dimensional bubbles and droplets in a yield-stress fluid. *Phys. Fluids* **20** (4), 040901.
- SMALL, C., CHO, S., HASHISHO, Z. & ULRICH, A. 2015 Emissions from oil sands tailings ponds: review of tailings pond parameters and emission estimates. *J. Petrol. Sci. Engng* **127**, 490–501.
- SUPEKAR, R., HEWITT, D.R. & BALMFORTH, N.J. 2020 Translating and squirming cylinders in a viscoplastic fluid. *J. Fluid Mech.* **882**, A11.
- TERASAKA, K. & TSUGE, H. 2001 Bubble formation at a nozzle submerged in viscous liquids having yield stress. *Chem. Engng Sci.* **56** (10), 3237–3245.
- TRESKATIS, T., MOYERS-GONZÁLEZ, M.A. & PRICE, C.J. 2016 An accelerated dual proximal gradient method for applications in viscoplasticity. *J. Non-Newtonian Fluid Mech.* **238**, 115–130.
- TRESKATIS, T., ROUSTAEI, A., FRIGAARD, I. & WACHS, A. 2018 Practical guidelines for fast, efficient and robust simulations of yield-stress flows without regularisation: a study of accelerated proximal gradient and augmented Lagrangian methods. *J. Non-Newtonian Fluid Mech.* **262**, 149–164.
- TRIPATHI, M., SAHU, K., KARAPETSAS, G. & MATAR, O. 2015 Bubble rise dynamics in a viscoplastic material. *J. Non-Newtonian Fluid Mech.* **222**, 217–226.
- TSAMOPOULOS, J., DIMAKOPOULOS, Y., CHATZIDAI, N., KARAPETSAS, G. & PAVLIDIS, M. 2008 Steady bubble rise and deformation in Newtonian and viscoplastic fluids and conditions for bubble entrapment. *J. Fluid Mech.* **601**, 123–164.
- ZARE, M., DANESHI, M. & FRIGAARD, I.A. 2021 Effects of non-uniform rheology on the motion of bubbles in a yield-stress fluid. *J. Fluid Mech.* **919**, A25.
- ZARE, M. & FRIGAARD, I.A. 2018 Onset of miscible and immiscible fluids' invasion into a viscoplastic fluid. *Phys. Fluids* **30** (6), 063101.