

Rapid assessment of historic, current and future habitat quality for biodiversity around UK Natura 2000 sites

I. N. VOGIATZAKIS^{1*}, M. T. STIRPE², S. RICKEBUSCH^{3,4}, M. J. METZGER⁴, G. XU^{4,5}, M. D. A. ROUNSEVELL⁴, R. BOMMARCO⁶ AND S. G. POTTS²

¹School of Pure and Applied Sciences, Open University of Cyprus, PO Box 12794, Cyprus, ²School of Agriculture, Policy and Development, University of Reading, Reading RG6 6AR, UK, ³Environmental Systems Analysis Subdivision, Wageningen University, PO Box 47, 6700AA Wageningen, The Netherlands, ⁴School of Geosciences, University of Edinburgh, Drummond Street, Edinburgh EH8 9XP, UK, ⁵College of Resources Science and Technology, Beijing Normal University, Beijing, 100875, China, and ⁶Department of Ecology, Swedish University of Agricultural Sciences, Box 7044, SE-750 07 Uppsala, Sweden

Date submitted: 21 July 2013; Date accepted: 3 March 2014; First published online 28 April 2014

SUMMARY

Changes in landscape composition and structure may impact the conservation and management of protected areas. Species that depend on specific habitats are at risk of extinction when these habitats are degraded or lost. Designing robust methods to evaluate landscape composition will assist decision- and policy-making in emerging landscapes. This paper describes a rapid assessment methodology aimed at evaluating land-cover quality for birds, plants, butterflies and bees around seven UK Natura 2000 sites. An expert panel assigned quality values to standard Coordination of Information on the Environment (CORINE) land-cover classes for each taxonomic group. Quality was assessed based on historical (1950, 1990), current (2000) and future (2030) land-cover data, the last projected using three alternative scenarios: a growth-applied strategy (GRAS), a business-as-might-be-usual (BAMBU) scenario, and sustainable European development goal (SEDG) scenario. A quantitative quality index weighted the area of each land-cover parcel with a taxa-specific quality measure. Land parcels with high quality for all taxonomic groups were evaluated for temporal changes in area, size and adjacency. For all sites and taxonomic groups, the rate of deterioration of land-cover quality was greater between 1950 and 1990 than current rates or as modelled using the alternative future scenarios (2000–2030). Model predictions indicated land-cover quality stabilized over time under the GRAS scenario, and was close to stable for the BAMBU scenario. The SEDG scenario suggested an ongoing loss of quality, though this was lower than the historical rate of *c.* 1% loss per decade. None of the future scenarios showed accelerated fragmentation, but rather increases in the area, adjacency and diversity of high quality land parcels in the landscape.

Keywords: expert opinion, land use, monitoring, protected areas, scenario analysis

INTRODUCTION

Quantification and monitoring of landscape composition and structure have become important tasks in ecology and biogeography, providing insight into relationships between ecological processes and spatial patterns (Turner 2005). These relationships are of great significance for the conservation and management of protected areas, since species often depend on specific habitats and are at greater risk of extinction when these habitats are degraded or lost (Fahrig 2003; Norris & Harper 2004). In order to understand and mitigate the negative impacts of habitat fragmentation on biodiversity, this assessment has to take place both in and around protected areas (Bengtsson *et al.* 2003; EEA [European Environment Agency] 2004; Jongman & Pungetti 2004).

The designation of the Natura 2000 European network of protected sites (<http://ec.europa.eu/environment/nature/natura2000/>) is an important step towards biodiversity protection, however, it may not by itself be adequate to ensure that current and upcoming conservation targets are achieved (Araújo *et al.* 2004). One of the European Union's main targets is to halt loss of most the important habitats and species by 2020 (Commission of the EC [European Communities] 2010). This target should be implemented both within Natura 2000 sites but also in the wider countryside. The efficiency of conservation within Natura 2000 sites also depends on conservation in the surrounding landscape (Bengtsson *et al.* 2003). There is therefore, a need to monitor activities beyond the Natura 2000 boundaries since understanding the spatial pattern of habitat patches and the character of the intervening landscape matrix is of utmost importance for the ecological structure and function of protected areas (Forman 1995). Ecological monitoring of Natura 2000 sites is part of the statutory obligations of every European Union (EU) member state. However, monitoring the processes in the area surrounding a Natura 2000 site is not required, and unlikely to take place or gain member states' commitment, given time, resources

*Correspondence: Ioannis Vogiatzakis Tel: +357 22411933 Fax: +357 22411671 e-mail: ioannis.vogiatzakis@ouc.ac.cy

and institutional restrictions (Papageorgiou & Vogiatzakis 2006). Therefore, there is a need to develop rapid assessment methods.

Traditionally, protected area management has focused on within-site management in order to ensure protection of the biota, however, evidence from ecological theory and practice suggest that the structure and quality of the surrounding landscape are as important as the protected area itself (Vandermeer & Carvajal 2001; Brotons *et al.* 2003; Ockinger *et al.* 2012a, b). There are many habitats outside protected areas which are of high biodiversity value in Europe and the UK in particular (EEA 2004). Modifications of the landscape matrix may affect the spatial configuration of existing habitats and in turn their overall quality. High quality habitats between protected areas may act as important corridors, buffers or stepping stones for biodiversity (EEA 2004). Landscape configuration can be the most visible change around protected sites. However, changes in habitat quality are equally important at a smaller scale for species persistence. Habitat quality can be defined as the ability of the environment to provide conditions appropriate for individual and population persistence (McDermid *et al.* 2005) and maintaining habitat quality is therefore critical to nature conservation policy. Assessing habitat quality can entail expensive species-level surveys and monitoring, and, for that reason, generic habitat quality indices have been used as a surrogate for rapid species monitoring (Luque & Vainikainen 2008).

Habitats are recognizable entities that can be identified, mapped and managed. In the absence of detailed current or historical habitat maps, ecological studies have relied on land cover as a surrogate for habitat mapping or to define broad habitat classes (see Bunce *et al.* 2008). This has been facilitated by the availability and low cost of medium to high resolution satellite imagery or aerial photographs (Alexander & Millington 2000). In this paper, we use the term land-cover quality to refer to the (potential) ability of a particular land-cover type as habitat for supporting diversity of a particular taxonomic group as evaluated by experts. High quality equates to land-cover types/habitats able to support high species richness/diversity (irrespective of individual identity).

Landscape composition affects habitat quality directly or indirectly through its influence on the resource base, population subdivision, human influence and disturbance regimes (Kupfer *et al.* 2006). Landscapes are intrinsically multi-functional as they integrate ecology, agriculture and settlement patterns. As such, in addition to supporting biodiversity conservation targets (namely habitats and species), they should also serve the needs of sustainable agriculture, the rural economy and recreation. Managing land for biodiversity can, therefore, lead to conflicts with other land management purposes. However, some land uses are more favourable to biodiversity than others, and improved spatial planning can support biodiversity at the landscape level (Lee & Thompson 2005; Lindborg *et al.* 2008; Griffiths *et al.* 2011). In Europe, the rapid landscape changes seen in

the past 50 years have occurred against the background of a long and varied history of settlement and landscape evolution. Agricultural industrialization has resulted in a change from small-grained and heterogeneous to more homogeneous and mono-functional agricultural landscapes (Brandt & Vejre 2003). The changes in the quantity, quality and spatial configuration of different land uses can directly or indirectly impact biodiversity (see review by Haines-Young 2009) while emerging synergies between land use and other forms of environmental change may also affect it (Rounsevell *et al.* 2006a). Whereas land-use changes are a principal driver of biodiversity loss at present (MEA [Millennium Ecosystem Assessment] 2005; UK NEA [National Ecosystem Assessment] 2011), recent studies have also highlighted the significance of historical landscape setting for biodiversity which is only evident after a time lag (Cousins 2009; Kuussaari *et al.* 2009; Krauss *et al.* 2010). Defining habitat/land-cover quality on the basis of high species presence is common practice (see for example Haddad & Tewksbury 2005), however, standardized data for estimating species richness in given land-cover classes (habitats) are scarce, while the ability to assess historic change is limited. In addition, with emerging environmental changes there is a need to evaluate the potential for biodiversity of future land-cover patterns in order to provide rapid assessment tools for policy making.

We examined a selected set of landscapes adjacent to UK Natura 2000 sites, and aimed to: (1) evaluate historic habitat quality changes (composition, structure) and predict future changes; and (2) assess the effects of past and future habitat quality changes on four important components of biodiversity, namely plants, birds, bees and butterflies. To this effect, we developed a habitat quality estimate that was linked to different land-cover classes, based on the opinion of experts for these four taxonomic groups. The nature of past land-use/land-cover changes in the study sites were previously discussed (Köhler *et al.* 2006; summary in Appendix 1, Table S1, see supplementary material at Journals.cambridge.org/ENC). Therefore, we only present land-use/land-cover changes resulting from the application of the land-use scenarios we used in this paper.

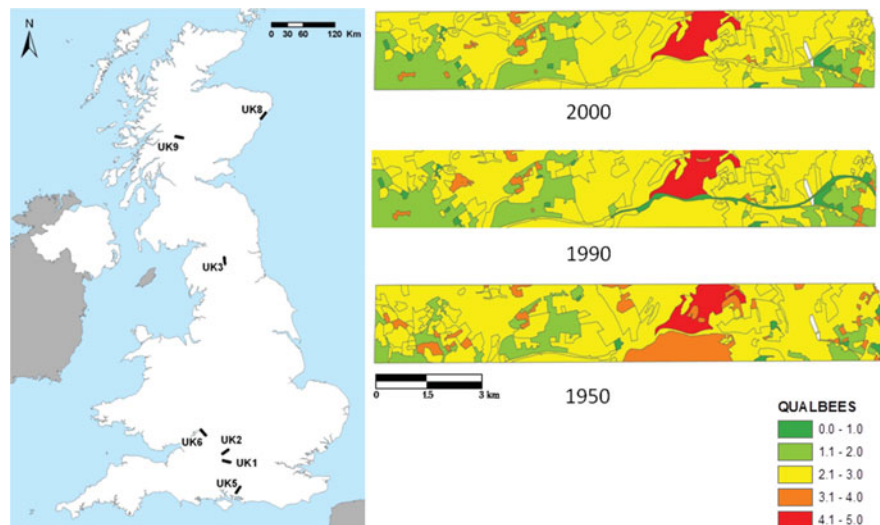
METHODS

Land-cover is defined as the observed physical cover on the Earth's surface, whereas land use involves the management and modification of natural environment by humans (Haines-Young 2009). Due to the interdependence of these terms, we use the term land use and land cover (LULC) throughout the text to refer to the relevant datasets used and changes recorded.

Study sites and historical land-use land-cover (LULC) data

We compiled data from seven UK areas, each hosting a Natura 2000 site (Fig 1; Appendix 1, Table S1, see supplementary

Figure 1 Location of the seven United Kingdom transects used in this study and an example of land-cover quality changes for bees in transect UK5. Area maps correspond to mean land-cover quality (evaluated on a scale of 0–5) for bees (QUALBEES) for the time slices 1950, 1990 and 2000, calculated from expert evaluation of CORINE level 3 land-cover classes.



material at [Journals.cambridge.org/ENC](https://journals.cambridge.org/ENC)). Four of those areas were in southern England (site codes: UK1, UK2, UK5 and UK6), one in northern England (site code: UK3) and two in Scotland (site codes: UK8 and UK9). They contain a mixture of upland and lowland sites with a wide range of habitats from Caledonian pine forests to lowland heathlands and sand dune formations (Appendix 1, Table S1, see supplementary material at [Journals.cambridge.org/ENC](https://journals.cambridge.org/ENC)). We selected the areas based on the availability of historical and current LULC data, provided by the BIOPRESS project (Thomson *et al.* 2007) covering the years 1950, 1990 and 2000. The size of each area, or transect, was set at 2 km × 15 km and was interpreted at a minimum mapping unit of 0.5 ha (Gerard *et al.* 2010) (Fig. 1).

Future land-use land-cover (LULC) data

We projected LULC changes for 2030 for three alternative scenarios, in order to explore a range of plausible futures. Scenarios are neither a forecast nor a prediction, but a useful tool for exploring possible future outcomes using internally consistent narrative storylines (Rounsevell & Metzger 2010). Our LULC change projections follow three scenarios (Reginster *et al.* 2010; Spangenberg *et al.* 2012) that are based on the approach described by Rounsevell *et al.* (2006b) to estimate and spatially allocate aggregate quantities of land-use change for the major land-use classes (such as urban or cropland) across Europe at a 10 arcmin resolution (*c.* 16 km × 16 km). We modelled the data using three differing future scenarios. (1) The growth applied strategy (GRAS) scenario, oriented towards economic growth and driven by a (neo)liberal policy pattern, where current protected areas are preserved but the NATURA 2000 network is not enforced. (2) The business-as-might-be-usual (BAMBU) scenario, namely a continuation of currently known socioeconomic and policy strategies, including foreseeable modifications, where current protected areas are preserved and the NATURA 2000 network

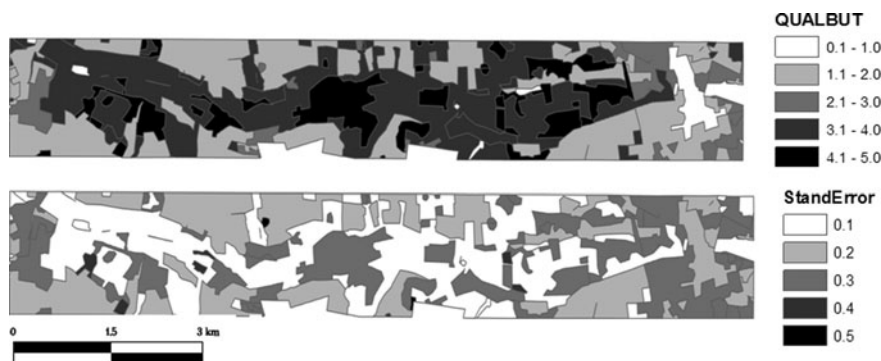
is enforced. (3) The sustainable European development goal (SEGD) normative scenario, focused on the achievement of environmentally, socially and economically sustainable development, where current protected areas are preserved and the NATURA 2000 network is enforced.

The allocation of projected LULC change from the pan-European scenarios to the highest level of thematic resolution provided by the Coordination of Information on the Environment (CORINE) land-cover (CLC) map (namely CLC level 3) (European Commission 1994) consisted of three steps, and is described in detail in Rickebusch *et al.* (2011). Firstly, we derived the relative change in four aggregated land-use change categories (urban, cropland, grassland and forest) from the pan-European scenarios and converted this into an absolute increase or decrease in 1-ha grid cells using the transect data. Secondly, we thematically disaggregated these changes to the detailed CLC categories, including three new bioenergy categories, namely ‘woody crops’ (such as short-rotation coppicing/willow), ‘non-woody crops’ (for example *Miscanthus*) and ‘liquid biofuels’ (derived from traditional crops such as maize, wheat or oil-seed rape). This provides information about the number of 1-ha grid cells by which each land-cover category will increase or decrease under each scenario. Finally, we allocated these changes in the transect using a combination of scenario-specific rules, regional information and expert judgement. The order of precedence for the LULC change allocation was: (1) protected areas, (2) urban areas, (3) agricultural land, (4) forest and (5) abandoned land (former cropland or pastures).

Measuring land-cover quality

We developed a land-cover quality model based on expert opinion to assess changes in land-cover and overall landscape quality. For each transect we calculated a quality index (QI) for 1950, 1990, 2000 and for each of the three 2030 scenarios.

Figure 2 Average land-cover quality (QUALBUT) including standard error (StandError) for butterflies in UK1 in 1950. Mean values and standard error were calculated from experts' evaluation of CORINE level 3 land-cover classes.



We calculated this index according to:

$$QI = \sum_{i=1}^n (Q_i \times p_i)$$

where Q_i is the quality score of each CORINE land-cover parcel i , p_i is the proportion of this parcel's area with respect to the overall transect area and n is the number of parcels in the transect.

Land-cover quality scores (Q_i) were based on the opinion of at least 10 UK experts for each taxonomic group. The experts were identified on the basis of their research experience, demonstrated by their publication record or their long-term practical experience in land management for the respective taxa. Experts were given the full descriptions of all land-cover classes according to CORINE (European Commission 1994) and were asked to rate them from 0 to 5 (where 0 was the lowest and 5 the highest value). Quality was defined here as a broad measure of the overall value of the land-cover type for general biodiversity for every taxonomic group, and therefore was not related primarily to rare species. Judgment was made on the basis of which land-cover types could potentially support the greatest diversity of plants, birds, bees and butterflies. Responses for every land-cover category and for every taxon were averaged and mapped into the GIS for each year as a basis for assessing changes in land-cover quality over time (Fig. 1). We mapped the average quality and its variation according to the experts' responses together with the QI (Fig. 2; Appendix 1, Table S2, see supplementary material at Journals.cambridge.org/ENC). We calculated the rate of land-cover quality change for the five periods. Based on this potential maximum, and in order to examine whether changes in quality are proportionate in magnitude to changes in land-cover we set three rates of change/thresholds (1%, 2% and 5% per decade), against which we compared changes in quality over the five periods examined. These three thresholds represent a range of likely rates of change of individual land-cover classes, around the average rate of 4% reported by Gerrard *et al.* (2010).

We identified land parcels with high quality for all taxonomic groups by summing up the values of all the evaluations (derived from experts' opinions) for all time slices (Fig. 3). Given that the range of quality was 0 to 5, we chose the median value of each taxonomic group and then summed

across taxonomic groups. Any land parcel with an overall value greater than 12, out of a maximum possible value of 20, was classed as high quality. For the high quality patches within each transect, we calculated the total area, mean patch size and adjacency to other high quality patches using the VLate extension (Lang & Tiede 2003) within ArcGIS and percentage changes between time slices. The three metrics were selected since they represent the major components of fragmentation (Fahrig 2003). In addition, we used Shannon's diversity and evenness indices as applied to landscapes (see MacGarigal 2013) to calculate diversity of high quality patches in every transect.

The Wilcoxon signed rank test was used to test the null hypothesis that there were no changes in land-cover quality for the four taxonomic groups between the periods. 1950–1990, 1990–2000, 2000–2030 (BAMBU), 2000–2030 (GRAS), and 2000–2030 (SEDG).

RESULTS

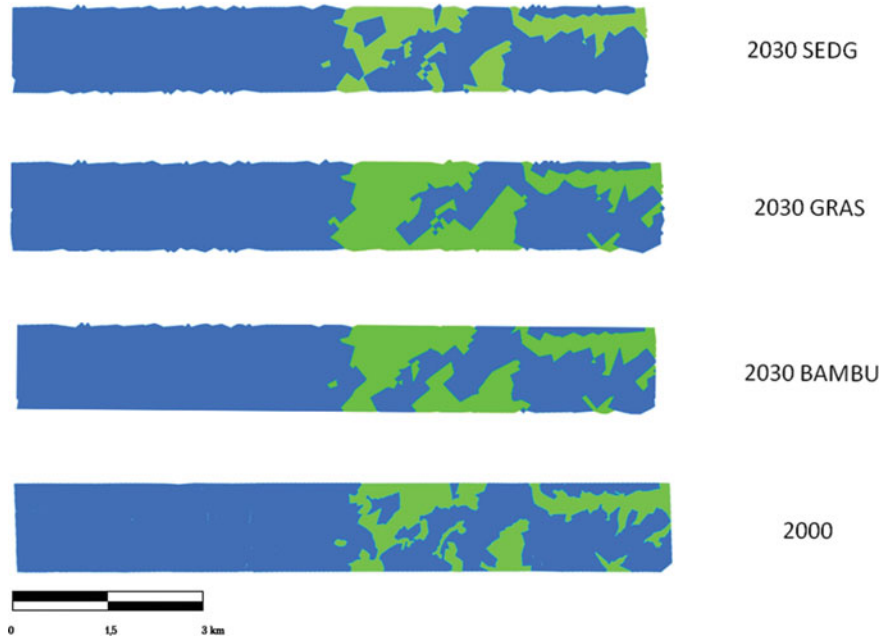
All future scenarios show small to medium increases in urban areas, mostly at the expense of agricultural land. Agricultural land, especially pasture, decreases considerably in all scenarios. The GRAS scenario shows the largest loss of agricultural land, most of which is abandoned, with some conversion to bioenergy crops. The SEDG scenario has the smallest decrease in agricultural land, and most of this is converted to bioenergy crops, with little or no abandonment. Forested areas show only small increases or decreases depending on area and scenario. Lost forest is generally converted to woody bioenergy crops. The BAMBU scenario generally represents the middle ground between the other two scenarios, though it is marginally closer to the GRAS scenario.

Quality evaluation

For most semi-natural classes there was a general agreement on the quality value of the four taxonomic groups (Appendix 1, Table S2, see supplementary material at Journals.cambridge.org/ENC). The classes that received the most varied response were urban and wetland. More specifically, for birds, the classes that showed the greatest variation in responses were industrial units, construction sites,

Table 1 Rate of land-cover quality change and Wilcoxon signed rank test significance level (*) for the four taxonomic groups examined.

Period	Mean rate of change in transects (%)	Bees	Birds	Plants	Butterflies	All taxonomic groups
1950–90	– 5.0	0.001*	0.001	0.001	0.001*	0.001*
1990–00	– 1.0	0.31	0.17	0.65	0.48	0.05*
2000–30G	0.0	0.09	0.43	0.21	0.26	
2000–30B	– 0.6	0.18	0.56	0.12	0.26	
2000–30S	– 2.0	0.71	0.48	0.07	0.31	

Figure 3 High quality areas (shown in lighter shading) for UK6 for both present (2000) and future (2030) scenarios (BAMBU, GRAS and SEDG). High quality land parcels for all taxonomic groups were identified by summing the values of all evaluations (experts' opinions) for all time slices.

roads and rail networks. For plants, it was the artificial classes, particularly continuous urban fabric and construction sites, but also wetland classes such as salines and intertidal flats. For bees and butterflies, construction sites, burnt areas and water-related classes showed the greatest variation between experts' opinions.

The rates of quality change, averaged across sites, were –5% for the period 1950–1990 and –1% for 1990–2000 (Table 2). For the 30-year projection scenarios, GRAS gave 0% of change, BAMBU –0.6% and SEDG –2%. For the 1% threshold of change, there was high loss of land-cover quality for the majority of sites and taxonomic groups for the period 1950–1990, while during 1990–2000 and in the GRAS and BAMBU scenarios, there was moderate loss overall but also some gains (Table 2). SEDG shows high losses compared to the other two scenarios. For the 2% threshold, there were high losses in land-cover quality for the period 1950–1990 and the SEDG scenario. All the other time slices/scenarios gave moderate losses of land-cover quality with some gains overall. For the 5% threshold, all periods showed moderate losses (particularly for GRAS and BAMBU), with a few high losses (for the period 1950–1990 and the SEDG scenario)

and limited gains only for Hackpen Hill (site code UK2). For 1950–1990 and 1990–2000, all sites showed quality loss for all taxa, particularly at the 1% and 2% thresholds. Butterflies did particularly well under the GRAS scenario for all levels, while birds seemed to be the worst affected taxonomic group in terms of land-use quality under the SEDG scenario for the 1% and 2% thresholds (Table 2).

There were significant changes in land-cover quality for all sites and taxonomic groups for the period 1950–1990, however, during 1990–2000 there were no statistically significant changes to reverse or extend this trend (Table 1). The GRAS and BAMBU scenarios showed no significant changes either for sites or for taxonomic groups, however, the SEDG scenario showed further deterioration of land-cover quality with the exception of the Sands of Forvie transect (UK8), although this was not statistically significant. All three scenarios seem to have overall negative effects on land-cover quality in the Kennet Valley transect (UK1). When all the taxonomic groups were pooled together, we identified significant changes for the periods 1950–1990 and 1990–2000, but did not detect significant changes for any of the projected scenarios (Table 1).

Table 2 Land-cover quality changes from 1950–2030. Negative values indicate loss in quality and positive values indicate gain in quality. For every threshold examined, ** indicates high loss (greater than the threshold), * indicates moderate loss (greater than 0 but less than the threshold) and no asterisks indicate gain in quality (positive values) (see text for details). GRAS = growth-applied strategy scenario, BAMBUBU = business-as-might-be-usual scenario, and SEDG = sustainable European development goal scenario. Butter = butterflies. Results for 5% threshold are provided in Appendix 1 (Table S3, see supplementary material at journals.cambridge.org/ENC).

Threshold	Site	1950–1990						1990–2000						2000–2030GRAS						2000–2030BAMBUBU						2000–2030SEDDG					
		Bees	Birds	Butter	Plants	Bees	Birds	Butter	Plants	Bees	Birds	Butter	Plants	Bees	Birds	Butter	Plants	Bees	Birds	Butter	Plants	Bees	Birds	Butter	Plants	Bees	Birds	Butter	Plants		
1%	UK1	-3.6**	-5.1**	-4.9**	-5.0**	0.3*	-1.0*	1.0*	0.4*	-1.4**	-2.4**	-2.7**	-1.8**	-1.4**	-2.6**	-2.1**	-2.0**	-4.0**	-5.5**	-3.3**	-4.1**	-3.6**	-5.5**	-4.0**	-2.0**	-4.6**	-5.5**	-3.3**	-4.1**		
	UK2	-4.7**	-10.6**	-9.4**	-9.6**	-3.3**	5.5	-16.4**	0.1*	0.5*	-1.8**	4.4	1.3	0.7*	-1.8**	4.4	1.2	1.8	-2.7**	-2.7**	9.8	1.8	-2.7**	4.4	1.2	1.8	-2.7**	9.8	2.4		
	UK3	0.7	-4.1**	-0.2	-2.0**	-3.3**	1.5	-2.3**	-1.3**	1.8	2.5	1.8	2.4	1.1	1.7	1.0*	1.7	0.7*	1.1*	1.1*	0.6*	1.0*	0.7*	1.0*	1.7	0.7*	1.1*	0.6*	1.0*		
	UK5	-6.7**	-3.2**	-2.1**	-4.7**	1.6	0.5*	3.0	0.5*	1.5	0.4*	2.2	1.6	0.3*	-0.6*	0.6*	0.0*	-2.5**	-4.1**	-1.8**	-3.4**	-3.4**	-4.1**	-2.5**	0.0*	-2.5**	-4.1**	-1.8**	-3.4**		
	UK6	-3.2**	-9.5**	-4.5**	-8.2**	-1.4**	-0.6*	-3.8**	-1.5**	0.5*	-0.4*	1.1	0.2*	0.2*	-1.1**	-1.8**	-1.0*	-1.6**	-3.7**	-5.2**	-3.6**	-5.0**	-5.2**	-3.7**	-1.6**	-3.7**	-5.2**	-3.6**	-5.0**		
	UK8	-1.3**	-0.8*	-7.1**	-2.9**	0.5	-1.4**	4.7	-0.3*	0.8*	0.7*	1.5	1*	0.5*	0.5*	0.5	1.1	0.7*	0.3*	0.2*	1.0*	0.4*	0.2*	1.1	0.7*	0.3*	0.2*	1.0*	0.4*		
	UK9	-4.4**	0.0	-3.8**	-1.2**	-4.9**	-0.6*	-3.5**	-1.5**	-0.6*	-0.5*	-0.8*	-0.9*	-0.9*	-1.8**	-1.4**	-2.2**	-2.3**	-4.6**	-3.4**	-5.0**	-5.3**	-3.4**	-2.3**	-2.3**	-4.6**	-3.4**	-5.0**	-5.3**		
	UK1	-3.6**	-5.1**	-4.9**	-5.0**	0.3*	-1.0*	1.0*	0.4*	-1.4**	-2.4**	-2.7**	-1.8**	-1.4**	-2.6**	-2.1**	-2.0**	-4.0**	-5.5**	-3.3**	-4.1**	-3.6**	-5.5**	-4.0**	-2.0**	-4.6**	-5.5**	-3.3**	-4.1**		
	UK2	-4.7**	-10.6**	-9.4**	-9.6**	-3.3**	5.5	-16.4**	0.1*	0.5*	-1.8**	4.4	1.3	0.7*	-1.8**	4.4	1.2	1.8	-2.7**	-2.7**	9.8	1.8	-2.7**	4.4	1.2	1.8	-2.7**	9.8	2.4		
2%	UK3	0.7	-4.1**	-0.2	-2.0**	-3.3**	1.5	-2.3**	-1.3**	1.8	2.5	1.8	2.4	1.1	1.7	1.0*	1.7	0.7*	1.1*	1.1*	0.6*	1.0*	0.7*	1.0*	1.7	0.7*	1.1*	0.6*	1.0*		
	UK5	-6.7**	-3.2**	-2.1**	-4.7**	1.6	0.5*	3.0	0.5*	1.5	0.4*	2.2	1.6	0.3*	-0.6*	0.6*	0.0*	-2.5**	-4.1**	-1.8**	-3.4**	-3.4**	-4.1**	-2.5**	0.0*	-2.5**	-4.1**	-1.8**	-3.4**		
	UK6	-3.2**	-9.5**	-4.5**	-8.2**	-1.4**	-0.6*	-3.8**	-1.5**	0.5*	-0.4*	1.1	0.2*	0.2*	-1.1**	-1.8**	-1.0*	-1.6**	-3.7**	-5.2**	-3.6**	-5.0**	-5.2**	-3.7**	-1.6**	-3.7**	-5.2**	-3.6**	-5.0**		
	UK8	-1.3**	-0.8*	-7.1**	-2.9**	0.5	-1.4**	4.7	-0.3*	0.8*	0.7*	1.5	1*	0.5*	0.5*	0.5	1.1	0.7*	0.3*	0.2*	1.0*	0.4*	0.2*	1.1	0.7*	0.3*	0.2*	1.0*	0.4*		
	UK9	-4.4**	0.0	-3.8**	-1.2**	-4.9**	-0.6*	-3.5**	-1.5**	-0.6*	-0.5*	-0.8*	-0.9*	-0.9*	-1.8**	-1.4**	-2.2**	-2.3**	-4.6**	-3.4**	-5.0**	-5.3**	-3.4**	-2.3**	-2.3**	-4.6**	-3.4**	-5.0**	-5.3**		
	UK1	-3.6**	-5.1**	-4.9**	-5.0**	0.3*	-1.0*	1.0*	0.4*	-1.4**	-2.4**	-2.7**	-1.8**	-1.4**	-2.6**	-2.1**	-2.0**	-4.0**	-5.5**	-3.3**	-4.1**	-3.6**	-5.5**	-4.0**	-2.0**	-4.6**	-5.5**	-3.3**	-4.1**		
	UK2	-4.7**	-10.6**	-9.4**	-9.6**	-3.3**	5.5	-16.4**	0.1*	0.5*	-1.8**	4.4	1.3	0.7*	-1.8**	4.4	1.2	1.8	-2.7**	-2.7**	9.8	1.8	-2.7**	4.4	1.2	1.8	-2.7**	9.8	2.4		
	UK3	0.7	-4.1**	-0.2	-2.0**	-3.3**	1.5	-2.3**	-1.3**	1.8	2.5	1.8	2.4	1.1	1.7	1.0*	1.7	0.7*	1.1*	1.1*	0.6*	1.0*	0.7*	1.0*	1.7	0.7*	1.1*	0.6*	1.0*		
	UK5	-6.7**	-3.2**	-2.1**	-4.7**	1.6	0.5*	3.0	0.5*	1.5	0.4*	2.2	1.6	0.3*	-0.6*	0.6*	0.0*	-2.5**	-4.1**	-1.8**	-3.4**	-3.4**	-4.1**	-2.5**	0.0*	-2.5**	-4.1**	-1.8**	-3.4**		
UK6	-3.2**	-9.5**	-4.5**	-8.2**	-1.4**	-0.6*	-3.8**	-1.5**	0.5*	-0.4*	1.1	0.2*	0.2*	-1.1**	-1.8**	-1.0*	-1.6**	-3.7**	-5.2**	-3.6**	-5.0**	-5.2**	-3.7**	-1.6**	-3.7**	-5.2**	-3.6**	-5.0**			
UK8	-1.3**	-0.8*	-7.1**	-2.9**	0.5	-1.4**	4.7	-0.3*	0.8*	0.7*	1.5	1*	0.5*	0.5*	0.5	1.1	0.7*	0.3*	0.2*	1.0*	0.4*	0.2*	1.1	0.7*	0.3*	0.2*	1.0*	0.4*			
UK9	-4.4**	0.0	-3.8**	-1.2**	-4.9**	-0.6*	-3.5**	-1.5**	-0.6*	-0.5*	-0.8*	-0.9*	-0.9*	-1.8**	-1.4**	-2.2**	-2.3**	-4.6**	-3.4**	-5.0**	-5.3**	-3.4**	-2.3**	-2.3**	-4.6**	-3.4**	-5.0**	-5.3**			

High quality patches

From 1950 to 1990, high quality patches increased in area in all but two transects. The transects showed mixed responses in terms of mean patch size, while adjacency decreased (Table 3). During the period 1990–2000, the total area of high quality patches within each transect was relatively stable or increased slightly, while the mean patch size decreased slightly and adjacency, with two exceptions: Kennet Valley (UK1) and Moor House Alston (UK3) remained stable. The scenarios showed a significant increase in area and mean patch size for the GRAS and BAMBUBU scenarios, with the exception of Rannoch Moor (UK9), while for SEDG scenario, half the sites showed an increase and the other half a decrease for these metrics (Table 3). For most transects the future scenarios retained or increased diversity of high quality patches in the landscape (Table 3).

DISCUSSION

Land-use land-cover (LULC) change

The results suggest that, despite differences in past LULC changes (Appendix 1, Table S1, see supplementary material at journals.cambridge.org/ENC), future changes in the sites are quite similar with no significant differences between upland and lowland sites. Urban expansion remains relatively low in all sites, while all sites would suffer moderate to large loss of grasslands

Although the quantities of new urban areas within a given transect are similar for the three scenarios, their location varies considerably, in accordance with the scenario storylines (from which the allocation rules derive). The SEDG scenario shows compact urban development around existing centres, whereas the GRAS scenario shows urban sprawl and new settlements. For agricultural land, the scenarios differ not only in the quantity of land lost, but also in its quality and what becomes of it. In the GRAS scenario the decline mostly affects extensive agricultural land. This is for a large part abandoned, with some conversion to bioenergy crops or urban land uses. Conversely, the SEDG scenario, does not show this intensification trend; there is significantly less abandonment, but substantial conversion to bioenergy crops.

Uncertainty is inherent in these scenario exercises, and includes different world-views in developing narrative storylines, or model input parameter assumptions, which cannot be described probabilistically (for a detailed discussion see Rounsevell & Metzger 2010).

Downscaling of LULC change projections using statistical methods (Verburg *et al.* 2006, 2008) is often limited in spatial (grid cell size) and thematic (number of land-use categories) resolution, making it unsuitable for many ecological studies. The downscaling method used here has the advantage of allowing a fine spatial (100 m) and thematic (CLC level 3) resolution. The final allocation of LULC change, combining rules and expert judgement, simulates actual decision-making processes more closely than statistical downscaling. The main

Table 3 Percentage change in area, mean patch size (MP), adjacency (Adj) and Shannon diversity (ShD) for the high quality parcels during the time periods 1950–1990, 1990–2000 and modelled using the three differing scenarios for 2000–2030. GRAS = growth-applied strategy scenario, BAMBU = business-as-might-be-usual scenario, and SEDG = sustainable European development goal scenario.

Sites	1950–1990					1990–2000					2000–2030 BAMBU					2000–2030 GRAS					2000–2030 SEDG				
	Area	MP	Adj	ShD	Area	MP	Adj	ShD	Area	MP	Adj	ShD	Area	MP	Adj	ShD	Area	MP	Adj	ShD	Area	MP	Adj	ShD	
UK1	22.6	14.7	-6.4	-0.8	0.0	-11.3	-4.2	2.7	11.0	-6.6	43.3	18.6	71.3	97.4	87.8	-23.7	167	132	93	10.1	132	93	10.1		
UK2	-32.3	-6.2	-100	0.0	0.0	-13.3	-0.5	0.0	115	4.2	174	-13.9	146	-0.4	224	-20.1	147	-2.4	281	31.7	147	-2.4	281		
UK3	3.6	-12.4	-4.1	111.7	-16.3	-16.3	-11.8	11.1	22.6	-18.3	-6.7	122	31.9	-18.3	3.2	125	17.4	-29.0	-3.3	100	17.4	-29.0	-3.3		
UK5	6.2	-2.1	24.3	-13.4	-0.4	1.1	1.6	-3.6	20.0	144	-8.2	22.6	35.7	22.9	-6.2	22.6	-8.2	285	-11.9	0.9	22.6	-8.2	285		
UK6	0.0	0.0	5.9	-10.5	-2.7	-6.5	1.3	-2.6	7.3	-44.1	12.4	44.6	9.1	-45.5	13.2	44.6	5.2	-56.9	14.3	1.35	44.6	5.2	-56.9		
UK8	-2.3	-7.1	-1.3	1.9	-7.1	-3.7	-0.8	-3.7	-22.5	259	-10.1	16.5	-0.8	86.3	-1.9	12.6	-4.3	77.4	-4.6	18.4	12.6	-4.3	77.4		
UK9	22.6	14.7	-6.4	18.3	0.0	-11.3	-4.2	4.6	11.0	-6.6	43.3	-0.7	71.3	97.4	87.8	-2.2	167	132	93.1	-11.1	132	93.1	-11.1		

constraint of this method is that it is time-consuming and would be difficult to apply to areas larger than a few thousand grid cells (Rickebusch *et al.* 2011).

Quality change

The rate of land-use quality change from 1950 to 1990 (5%) was, on average, 1% per decade, which is similar to the 1990–2000 rate. This indicates that the rate of quality loss has remained roughly constant across sites through time. The significant quality changes that took place for all transects during 1950–1990 are direct results of associated major LULC changes. These include, for example, urban expansion in Kennet Valley, Butser Hill and the Cotswold Beechwoods (UK1, UK5 and UK6, respectively), intensification of arable land and loss of pasture in Kennet Valley, Hackpen Hill and Butser Hill (UK1, UK2, UK5) (Köhler *et al.* 2006). In the scenarios, the GRAS results show stabilization, with the BAMBU results close to stabilization. The SEDG results show a further loss of quality, though this is lower than expected in view of the past rate (*c.* 1% loss per decade). In other words, without the change in policy towards biofuels, 3% loss is expected between 2000 and 2030.

The sites responded quite differently in terms of overall quality for the various taxonomic groups through time. The quality of some sites, such as Sands of Forvie (UK8), has been improving continuously since the 1950s for the majority of taxonomic groups, while others, such as Moor House Alston (UK3), have been improving in quality since the 1990s. Some sites are affected more than others by a particular scenario, such as Kennet Valley (UK1), Cotswold Beechwoods (UK6) and Rannoch Moor (UK9), which show great losses in quality under the SEDG scenario.

Changes in high quality patches, in terms of area, do not follow the overall land-cover quality changes in the transects. From 1950 to 1990, the major change observed was the loss of connectivity between high quality parcels. From 1990 to 2000, the major change was the reduction in the mean patch size of high quality patches. For the BAMBU and GRAS scenarios, the main shift in quality was an increase in the area of high quality patches. SEDG was the only scenario that showed mixed effects. Although SEDG was the most ‘environmentally friendly’ of our three model scenarios, it also imposed a high demand for bioenergy crops, which limits agricultural land abandonment and therefore biodiversity support; however, this will greatly depend on production methods and, under the SEDG scenario, more environmentally-friendly production methods may be developed and implemented. In addition, abandoned land in the GRAS and BAMBU scenarios was assumed to follow the path of natural succession; however, land could also be subject to alternative uses that may be less favourable to biodiversity.

Some transects have become more fragmented than others in the past (for example Hackpen Hill [UK2] from 1950 to 1990, and Moorhouse Alston [UK3] from 1950 to 1990), however, there was no evidence that one scenario was more likely

to accelerate fragmentation as a whole, although individual scenarios appeared to promote patch loss, reduction or lack of connectivity (Fahrig 2003), depending on the site. For most transects, the scenarios we applied retained or increased landscape diversity of high quality patches in the future. This is an important finding, since landscape diversity and heterogeneity is conducive to biodiversity richness (Tscharrntke *et al.* 2005) and population stability (Oliver *et al.* 2010).

A major issue here is whether land-cover quality can be used as a surrogate for biodiversity in the absence of detailed habitat mapping. Using surrogates to measure habitat quality has been criticized as lacking reliability (Johnson 2007). Some European land-cover monitoring schemes include qualitative aspects (Hill *et al.* 2000), but this is not the case at the pan-European level, and was not so for historical land-cover data (for example in the 1950s). Therefore, this approach provides an easy, rapid and pragmatic overview of land-cover quality for biodiversity support. The difficulties in defining quality have been well documented (McDermid *et al.* 2005; Johnson 2007), and were also flagged by expert respondents during the survey. However, the results suggest that the experts in the present study generally agreed about what constituted a 'favourable' or 'non-favourable' land cover for biodiversity support in the four taxonomic groups. Recorded variation in experts' responses can be directly related to the broad description of land-cover classes as a result of the mapping employed. The accuracy of land-cover mapping is a function of the thematic resolution, cartographic standards and interpretation (see Herold *et al.* 2006), and CORINE is no exception.

A further assumption is that the relative quality of a land-cover type has remained constant over time. Management practices have changed since the 1950s, and therefore the quality of a land-cover class might vary over the years. However, when a land-cover class is compared to adjacent land-cover classes in a certain area at a point in time, the overall qualitative assessment has the same significance. In other words, low quality in the 1950s means the same as low quality in the 1990s, even if an absolute qualitative comparison between them might not be possible. In essence, this is a relative comparison of quality that first takes place between different land-cover classes at any given point in time and then between points in time for all land-cover classes examined.

Policy implications

With the European Landscape Convention in place (Council of Europe 2000) the protection, management and planning of landscapes is for the first time coming to the forefront of European policy. The Convention promotes multi-functional landscapes through the integration of landscapes into sectoral policies. Although by definition the GRAS scenario has weak planning policy and may, in theory, favour monofunctionality, when applied here it showed a stabilization of quality change with some support of high quality patches for biodiversity. The BAMBU and SEDG scenarios were more conducive to the creation of multifunctional landscapes by definition (Rickebusch *et al.* 2011), but while BAMBU effects

were consistent with the narrative, SEDG data suggested continuing loss of overall quality within transects and weaker support of high-quality parcels.

The highest loss of land-cover quality for most of the taxonomic groups, irrespective of the threshold selected, occurred 1950–1990. This might be particularly alarming for conservation efforts in an area where biodiversity responses have considerable time lags (Lindborg & Eriksson 2004; Cousins 2009). Changes were less marked for the period 1990–2000, which is as expected, since it is shorter compared to the other four periods examined. Projected models for 2030 showed that, despite the overall deterioration in land-cover quality, there were still high-quality corridors present within most of the transects around the Natura 2000 sites, which might enhance biodiversity conservation. With the declared objective to halt biodiversity loss by 2020, the emphasis has been placed on maintaining the coherence of the Natura 2000 network, which is under increasing pressure from land-use change and landscape fragmentation (Commission of the EC 2010). Increasing connectivity is important for the functioning of protected areas and has been applied as a policy instrument to counteract fragmentation (see Parkhurst *et al.* 2002). For the transects situated in multifunctional landscapes (four out of the seven used in this study), the presence of corridors with high quality patches is encouraging for biodiversity.

Even when an area is designated for protection, the successful conservation of species is not guaranteed. Protected areas are subject to both natural (such as drought and flooding) and human (such as forest clearing) threats, and benefit from the creation of further similar sites to reduce extinction risk. Changes within a transect might reflect the pressures from external factors, including Common Agricultural Policy reform, and biofuel and other national policies. Nevertheless, our results highlight that there is a need to monitor activities beyond the Natura 2000 boundaries, since understanding the spatial pattern of land parcels and the character of the intervening matrix is of utmost importance for the ecological structure and function of protected areas.

Following the Convention on Biological Diversity (www.cbd.int), the European Union initially followed an ambitious target of reducing biodiversity loss by 2010, but the deadline for achieving this has shifted to 2020 (Commission of the EC 2010). As the evidence for the links between land use and biodiversity is increasing, a key issue for policy makers remains the robustness of the evidence base to inform policy action (Haines-Young 2010). In support of policy, the focus of the scientific community has been on how to assess progress towards these set targets. In the absence of systematic species data collection, monitoring may need to increasingly rely on quick and reliable rapid assessment tools. The ability to provide timely and reliable information on LULC changes has been recognized at the European level, which has led to initiatives such as Copernicus (which provides land monitoring service to support a wide range of European policies on environmental issues, www.copernicus.eu). The evaluation of land-cover quality, in particular by means of future scenarios, can be used to design multifunctional

landscapes and provide guidance for biodiversity planning around Natura 2000 sites. The scenarios used here result in landscapes that provide corridors and stepping stones for overall biodiversity or for specific taxonomic groups. Although this is a UK-based exercise, it may be repeated for individual species of interest and, once the scenario data is provided, can easily be repeated by practitioners and used for communication to policy makers. At the European level, this would involve the consultation of a wide range of experts from different countries to develop an EU-wide interpretation of land-cover quality that would account for variations within CLC classes between countries. The results of this and other relevant studies may inform and support policy intervention to mitigate the potential risks related to land-use changes and landscape fragmentation around protected areas.

ACKNOWLEDGEMENTS

This research was funded by EU FP6 project COCONUT (SSPI-CT-2006-044343), with additional support from SCALES (EC FP7 grant 226852) and STEP (EC FP 7 grant 244090). We thank Dr France Gerard (Centre for Ecology and Hydrology) for providing the BIOPRESS dataset, Dr Geoffrey H. Griffiths (University of Reading) for proofreading, and three anonymous reviewers for their constructive comments. We are grateful to the following experts (in alphabetical order), who took time to participate in the assessment exercise: M. Albertini, G. Allen, K. Biesmeijer, N. Bourn, N. Bowles, M. Burgess, S. Butler, E. Chambers, K. Coleman, G. Collins, W. Creswell, H. Devlin, J. Dover, S. Falk, F. Gilbert, J. Gill, D. Goulson, R. Green, G. Griffiths, N. Jones, R. Kenward, K. Kirby, P. Kirkland, M. Kuhlmann, W. Kunin, M. Macdonald, D. McCracken, J. Mitchley, S. Mortimer, M. Nicholl, K. Norris, M. Oates, R. Pakeman, S. Potts, S. Roberts, D. Smith, M. Warren, M. Webb, D. Westbury, M. Whittingham, A. Wilby, P. Williams and M. Young.

Supplementary material

To view supplementary material for this article, please visit Journals.cambridge.org/ENC

References

- Araújo, M.B., Cabeza, M., Thuiller, W., Hannah, L. & Williams, P.H. (2004) Would climate change drive species out of reserves? An assessment of existing reserve-selection methods. *Global Change Biology* **10**: 1618–1626.
- Alexander, R. & Millington, A., eds (2000) *Vegetation Mapping: from Patch to Planet*. Chichester, UK: John Wiley and Sons: 339 pp.
- Bengtsson, J., Angelstam, P., Elmqvist, T., Emanuelsson, U., Folke, C., Ihse, M., Moberg, F. & Nyström, M. (2003) Reserves, resilience and dynamic landscapes. *Ambio* **32**: 389–396.
- Brandt, J. & Vejre, H., eds (2003) *Multifunctional Landscapes Volume 1, Theory, Values and History*. Southampton, UK: WIT Press.
- Brotans, L., Mönkkönen, M. & Martin, J.L. (2003) Are fragments islands? Landscape context and density–area relationships in boreal forest birds. *American Naturalist* **162**: 343–357.
- Bunce, R.G.H., Metzger, M.J., Jongman, R.H.G., Brandt, J., de Blust, G., Elena-Rossello, R., Groom, G.B., Halada, L., Hofer, G., Howard, D.C., Kovář, P., Múcher, C.A., Padoa-Schioppa, E., Paelinx, D., Palo, A., Perez-Soba, M., Ramos, I.L., Roche, P., Skånes, H. & Wrba, T. (2008) A standardized procedure for surveillance and monitoring European habitats and provision of spatial data. *Landscape Ecology* **23**: 11–25.
- Commission of the EC (2010) Communication from the Commission to the European Parliament, the Council, the European Economic and Social Committee and the Committee of the Regions: options for an EU vision and target for biodiversity beyond 2010 [www document]. URL http://ec.europa.eu/environment/nature/biodiversity/policy/pdf/communication_2010_0004.pdf
- Council of Europe (2000) European Landscape Convention. Florence 20.X.2000. European Treaty Series CETS No .176 [www document]. URL <http://conventions.coe.int/Treaty/en/Treaties/Html/176.htm>
- Cousins, S.A.O. (2009) Extinction debt in fragmented grasslands: paid or not? *Journal of Vegetation Science* **20**: 3–7.
- EEA (2004) High nature value farmland: characteristics, trends and policy challenges. European Environment Agency Report 1/2004. Office for Official Publications of the European Communities [www document]. URL http://www.eea.europa.eu/publications/report_2004_1
- European Commission (1994) CORINE land cover technical guide. Report EUR 12585EN, Office for Official Publications of the European Community, Luxembourg: 144 pp.
- Fahrig, L. (2003) Effects of habitat fragmentation on biodiversity. *Annual Review of Ecology and Systematics* **34**: 487–515.
- Forman, R.T.T. (1995) *Land Mosaics: The Ecology of Landscapes and Regions*. Cambridge, UK and New York, NY, USA: Cambridge University Press: 632 pp.
- Gerard, F., Petit, S., Smith, G., Thomson, A., Brown, N., Manchester, S., Wadsworth, R., Bugar, G., Halada, L., Beza'k, P., Boltziar, M., De Badts, E., Halabuk, A., Mojses, M., Petrovic, F., Gregor, M., Hazeu, G., Múcher, C.A., Wachowicz, M., Huitu, H., Tuominen, S., Köhler, R., Olschofsky, K., Ziese, H., Kolar, J., Sustera, J., Luque, S., Pino, J., Pons, X., Roda, F., Roscher, M. & Feranec, J. (2010) Land cover change in Europe between 1950 and 2000 determined employing aerial photography. *Progress in Physical Geography* **34**: 183–194.
- Griffiths, G.H., Vogiatzakis, I.N., Porter, J. & Burrows, C. (2011) A landscape scale spatial model for semi-natural broadleaf woodland expansion in Wales, UK. *Journal for Nature Conservation* **19**: 43–53.
- Haddad, N.M. & Tewksbury, J.J. (2005) Low-quality habitat corridors as movement conduits for two butterfly species. *Ecological Applications* **15**: 250–257.
- Haines-Young, R. (2009) Land use and biodiversity relationships. *Land Use Policy* **26**(suppl. 1): S178–S186.
- Herold, M., Woodcock, C., Di Gregorio, A., Mayaux, B., Latham, J. & Schmullius, C. (2006) A joint initiative for harmonization and validation of land cover datasets. *IEEE Transactions on Geoscience and Remote Sensing* **44**: 1719–1727.
- Hill, M.O., Roy, D.B., Mountford, J. O. & Bunce, R.G.H. (2000) Extending Ellenberg's indicator values to a new area: an algorithmic approach. *Journal of Applied Ecology* **37**: 3–15.
- Johnson, M. (2007) Measuring habitat quality. *The Condor* **109**: 489–504.
- Jongman, R.H.G. & Pungetti, G. (2004) *Ecological Networks and Greenways: Concept, Design, Implementation*. Cambridge Studies

- in *Landscape Ecology*. Cambridge, UK: Cambridge University Press.
- Krauss, J., Bommarco, R., Guardiola, M., Heikkinen, R.K., Helm, A., Kuussaari, M., Lindborg, R., Öckinger, E., Pärtel, M., Pino, J., Pöyry, J., Raatikainen, K.M., Sang, A., Stefanescu, C., Teder, T., Zobel, M. & Steffan-Dewenter, I. (2010) Habitat fragmentation causes immediate and time-delayed biodiversity loss at different trophic levels. *Ecology Letters* 13: 597–605.
- Köhler, R., Olschofsky, K. & Gerard, F., eds (2006) *Land cover change in Europe from the 1950ies to 2000. Aerial Photo Interpretation and Derived Statistics from 59 Samples Distributed Across*. Hamburg, Germany: Institute for Worldforestry, University of Hamburg: 364 pp.
- Kupfer, J.A., Malanson, G.P. & Franklin, S.B. (2006) Not seeing the ocean for the islands: the mediating influence of matrix-based processes on forest fragmentation effects. *Global Ecology and Biogeography* 15: 8–20.
- Kuussaari, M., Bommarco, R., Heikkinen, R.K., Helm, A., Krauss, J., Lindborg, R., Öckinger, E., Pärtel, M., Pino, J., Roda, F., Stefanescu, C., Teder, T., Zobel, M. & Steffan-Dewenter, I. (2009) Extinction debt: a challenge for biodiversity conservation. *Trends in Ecology and Evolution* 24: 564–571.
- Lang, S. & Tiede, D. (2003) vLATE Extension für ArcGIS: vektorbasiertes tool zur quantitativen 324 landschaftsstrukturanalyse. CD-ROM, ESRI Anwenderkonferenz 2003 Innsbruck, Austria.
- Lee, J.T. & Thompson, S. (2005) Targeting sites for habitat creation: an investigation into alternative scenarios. *Landscape Urban Planning* 71: 17–28.
- Lindborg, R. & Eriksson, O. (2004) Historical landscape connectivity affects present plant species diversity. *Ecology* 85: 1840–1845.
- Lindborg, R., Bengtsson, J., Berg, A., Cousins, S.A.O., Eriksson, O., Gustafsson, T., Hasund, K.-P., Lenoir, L., Pihlgren, A., Sjödin, E. & Stenseke, M. (2008) A landscape perspective on conservation of semi-natural grasslands. *Agriculture Ecosystems and Environment* 125: 213–222.
- Luque, S. & Vainikainen, N. (2008) Habitat quality assessment and modelling for forest biodiversity and sustainability. In: *Patterns and Processes in Forest Landscapes: Multiple Use and Sustainable Management*, ed. R. Laforteza, G. Sanesi, J. Chen & T.R. Crow, pp. 241–264. The Netherlands: Springer Netherlands.
- MacGarigal, K. (2013) Fragstats HELP. version 4 [www document]. URL <http://www.umass.edu/landeco/research/fragstats/documents/fragstats.help.4.2.pdf>
- McDermid, G., Franklin, S.E. & LeDrew, E.F. (2005) Remote sensing for large-area habitat mapping. *Progress in Physical Geography* 29: 449–474.
- MEA (2005) *Ecosystems and Human Well Being*. Washington, DC, USA: Island Press.
- Norris, K. & Harper, N. (2004) Extinction processes in the hotspots of biodiversity and the targeting of pre-emptive conservation action. *Proceedings Royal Society London B* 271: 123–130.
- Öckinger, E., Bergman, K.O., Franzén, M., Kadlec, T., Krauss, J., Kuussaari, M., Pöyry, J., Smith, H.G., Steffan-Dewenter, I. & Bommarco, R. (2012a) The landscape matrix modifies the effect of habitat fragmentation in grassland butterflies. *Landscape Ecology* 27: 121–131.
- Öckinger, E., Lindborg, R., Sjödin, N.E. & Bommarco, R. (2012b) Landscape matrix modifies species richness of plants and insects in grassland fragments. *Ecography* 35: 259–267.
- Oliver, T., Roy, D.B., Hill, J.K., Brereton, T. & Thomas, C. (2010) Heterogeneous landscapes promote population stability. *Ecology Letters* 13: 473–484.
- Papageorgiou, K. & Vogiatzakis, I.N. (2006) Nature protection in Greece: an appraisal of the factors shaping integrative conservation and policy effectiveness. *Environmental Science and Policy* 9: 476–486.
- Parkhurst, G. M., Shogren, J. F., Bastian, C., Kivi, P., Donner, J. & Smith, R.B.W. (2002) Agglomeration bonus: an incentive mechanism to reunite fragmented habitat for biodiversity conservation. *Ecological Economics* 41: 305–328.
- Reginster, I., Rounsevell, M., Butler, A. & Dendoncker, N. (2010) Land use change scenarios for Europe. In: *Atlas of Biodiversity Risk*, ed. J. Settele, L. Penev, T. Georgiev, R. Grabau, V. Grobelnik, V. Hammen, S. Klotz, M. Kotarac & I. Kühn, pp. 100–105. Sofia, Bulgaria and Moscow, Russia: Pensoft Publishing: 300 pp.
- Rickebusch, S., Metzger, M., Xu, G., Vogiatzakis, I.N., Potts, S.G., Stirpe, M.T. & Rounsevell, M. (2011) A qualitative method for the spatial and thematic downscaling of land-use change scenarios. *Environmental Science and Policy* 14: 268–278.
- Rounsevell, M.D.A. & Metzger, M.J. (2010) Developing qualitative scenario storylines for environmental change assessment. *Wiley Interdisciplinary Reviews: Climate Change* 1: 606–619.
- Rounsevell, M.D.A., Berry, P.M. & Harrison, P.A. (2006a) Future environmental change impacts on rural land use and biodiversity: a synthesis of the ACCELERATES project. *Environmental Science and Policy* 9: 93–100.
- Rounsevell, M.D.A., Reginster, I., Araujo, M.B., Carter, T.R., Dendoncker, N., Ewert, F., House, J.I., Kankaanpää, S., Leemans, R., Metzger, M.J., Schmit, C., Smith, P. & Tuck, G. (2006b) A coherent set of future land use change scenarios for Europe. *Agriculture Ecosystems and Environment* 114: 57–68.
- Spangenberg, J., Carter, T., Fronzek, S., Jaeger, J., Jylhä, K., Kühn, I., Omann, I., Paul, A., Reginster, I., Rounsevell, M.D.A., Schweiger, O., Stocker, A., Sykes, M. & Settele, J. (2012) Scenarios for investigating risks to biodiversity. *Global Ecology and Biogeography* 21: 5–18.
- Thomson, A.G., Manchester, S.J., Swetnam, R.D., Smith, G.M., Wadsworth, R.A., Petit, S. & Gerard, F.F. (2007) The use of digital aerial photography and CORINE-derived methodology for monitoring recent and historic changes in land cover near UK Natura 2000 sites for the BIOPRESS project. *International Journal of Remote Sensing* 28: 5397–5426.
- Tscharntke, T., Klein, A.M., Krüess, A., Steffan-Dewenter, I.A. & Thies, C. (2005) Landscape perspectives on agricultural intensification and biodiversity-ecosystem service management. *Ecology Letters* 8: 857–874.
- Turner, M. (2005) Landscape ecology: what is the state of the science. *Annual Review of Ecology and Systematics* 36: 319–344.
- UK NEA (2011) The UK National Ecosystem Assessment: the synthesis of the key findings. Report, UNEP-WCMC, Cambridge, UK [www document]. URL <http://uknea.unep-wcmc.org/Resources/tabid/82/Default.aspx>
- Vandermeer, J. & Carvajal, R. (2001) Metapopulation dynamics and the quality of the matrix. *American Naturalist* 158: 211–220.
- Verburg, P.H., Eickhout, B. & van Meijl, H. (2008) A multi-scale, multi-model approach for analyzing the future dynamics of European land use. *Annals of Regional Science* 42: 57–77.
- Verburg, P.H., Schulp, C.J.E., Witte, N. & Veldkamp, A. (2006) Downscaling of land use change scenarios to assess the dynamics of European landscapes. *Agriculture Ecosystems and Environment* 114: 39–56.