

Optimal measures for characterizing water-rich super-Earths

Nikku Madhusudhan^{1,*} and Seth Redfield²

¹*Institute of Astronomy, University of Cambridge, Cambridge CB3 0HA, UK
e-mail: nmadhu@ast.cam.ac.uk*

²*Astronomy Department, Van Vleck Observatory, Wesleyan University, Middletown, CT 06459, USA*

Abstract: The detection and atmospheric characterization of super-Earths is one of the major frontiers of exoplanetary science. Currently, extensive efforts are underway to detect molecules, particularly H₂O, in super-Earth atmospheres. In the present work, we develop a systematic set of strategies to identify and observe potentially H₂O-rich super-Earths that provide the best prospects for characterizing their atmospheres using existing instruments. First, we provide analytic prescriptions and discuss factors that need to be taken into account while planning and interpreting observations of super-Earth radii and spectra. We discuss how observations in different spectral bandpasses constrain different atmospheric properties of a super-Earth, including radius and temperature of the planetary surface as well as the mean molecular mass, the chemical composition and thermal profile of the atmosphere. In particular, we caution that radii measured in certain bandpasses can induce biases in the interpretation of the interior compositions. Second, we investigate the detectability of H₂O-rich super-Earth atmospheres using the Hubble Space Telescope Wide Field Camera 3 spectrograph as a function of the planetary properties and stellar brightness. We find that highly irradiated super-Earths orbiting bright stars, such as 55 Cancri e, present better candidates for atmospheric characterization compared to cooler planets such as GJ 1214b even if the latter orbit lower-mass stars. Besides being better candidates for both transmission and emission spectroscopy, hotter planets offer higher likelihood of cloud-free atmospheres which aid tremendously in the observation and interpretation of spectra. Finally, we present case studies of two super-Earths, GJ 1214b and 55 Cancri e, using available data and models of their interiors and atmospheres.

Received 16 September 2013, accepted 11 August 2014, first published online 29 October 2014

Key words: general, planets and satellites; individual (GJ 1214 b, 55 Cancri e); planetary systems, planets and satellites

Introduction

The holy grail of exoplanetary science is ultimately the detection and atmospheric characterization of an Earth analogue. Recent observational surveys have already detected transiting exoplanets with terrestrial-like masses and/or radii (e.g. Leger *et al.* 2009; Batalha *et al.* 2011; Barclay *et al.* 2013; Borucki *et al.* 2013), and a wide range of equilibrium temperatures, including some in the habitable zones of their host stars (e.g. Borucki *et al.* 2013; Quintana *et al.* 2014). To date, masses and radii have both been measured for about 20 transiting super-Earths, defined as planets with masses between one and ten Earth Masses (Valencia *et al.* 2006; Seager *et al.* 2007). Furthermore, exoplanet occurrence rates derived from surveys are revealing that sub-Neptune size planets are the most numerous class of planets in the solar neighbourhood (Howard *et al.* 2012; Fressin *et al.* 2013). Currently, characterizing the atmospheres of such low-mass planets is one of the most active frontiers of exoplanetary science.

Atmospheric characterization of super-Earths with current and upcoming facilities requires a focused assessment of

objectives. Observational surveys increasingly desire to find super-Earths in the habitable zones of their host stars, and, if the planets happen to be transiting, to characterize their atmospheres. Our notions of habitability are commonly based on equilibrium temperatures (T_{eq}) where liquid water can sustain, assuming that H₂O is indeed abundant in the planets in the first place (Kasting 1993; Selsis 2007; Abe *et al.* 2011; Kaltenegger *et al.* 2013; Kopparapu *et al.* 2013a, b). However, testing this assumption by observationally detecting H₂O in the atmosphere of a habitable super-Earth is beyond the reach of current observational facilities, and would be challenging even with larger forthcoming facilities within this decade (Kaltenegger & Traub 2009; Belu *et al.* 2011, 2013; Hedelt *et al.* 2013; Snellen *et al.* 2013). Therefore, currently there is no plausible means for directly assessing the atmospheric chemical compositions, and hence the true habitability, of habitable-zone super-Earths and terrestrial analogues.

A more achievable goal at the present time is to answer the more basic question of what is the frequency of H₂O-rich super-Earths irrespective of whether their temperatures are habitable or not. Such a question opens up the sample space to short-period transiting super-Earths whose atmospheres can potentially be characterized with existing facilities. While the short periods increase the probability and frequency of

* Formerly at the Department of Physics and Department of Astronomy, Yale University, New Haven, CT 06511, USA.

transits, the higher atmospheric temperatures make them more favourable for detecting H₂O in their atmospheric spectra. The outlook for characterization of such super-Earths is promising given that upcoming surveys from space, such as TESS (Ricker *et al.* 2014), CHEOPS (Broeg *et al.* 2013) and PLATO (Rauer *et al.* 2013), and on ground (e.g. Snellen *et al.* 2012; Gillon *et al.* 2013) are expected to find large numbers of short-period super-Earths orbiting bright and low-mass stars.

In the present work, we develop a framework for identification and characterization of H₂O-rich super-Earths with existing observational facilities. We present analytic prescriptions and theoretical results that are useful for planning and interpretation of super-Earth observations. We demonstrate how upper-limits on the atmospheric mean molecular mass can be derived for certain super-Earths based only on their masses and radii, and that only radii measured in certain bandpasses (‘opacity windows’) can be used to derive unbiased constraints on their interior compositions. We also explore the dependence of super-Earth spectra on chemical composition and temperature. Finally we investigate the detectability of H₂O-rich super-Earth atmospheres with the Hubble Space Telescope Wide Field Camera 3 (*HST* WFC3) Spectrograph, and derive sensitivity estimates for super-Earths orbiting two broad stellar prototypes, a G dwarf and an M dwarf, over a wide range of planetary equilibrium temperatures (T_{eq}) and stellar brightnesses.

Constraints from mass and radius

The observed mass and radius (M_p , R_p) of a super-Earth can be used to place nominal constraints on its interior and atmospheric composition using internal structure models. Figure 1 shows mass – radius relations for homogeneous planets of various compositions, along with the masses and radii of several transiting super-Earths. The internal structure model and mass – radius curves are described in Madhusudhan *et al.* (2012). The compositions, shown in Fig. 1 include the most common minerals typically invoked for super-Earth interiors, namely, Fe, silicates and H₂O (Valencia *et al.* 2006; Seager *et al.* 2007; Fortney *et al.* 2007; Sotin *et al.* 2007). Also shown are curves for SiC and C which, although rarely expected, can nevertheless be abundant in C-rich environments (Madhusudhan *et al.* 2012). Given the mass of a super-Earth, its radius can be explained by an often degenerate set of solutions comprising of various proportions of the different minerals listed above (e.g. Rogers & Seager 2010a; Valencia *et al.* 2010; Wagner *et al.* 2012; Gong & Zhou 2012; Madhusudhan *et al.* 2012).

Despite the degeneracy in solutions, the likelihood of a H₂O-rich atmosphere in a super-Earth can still be assessed from M_p and R_p . We define three super-Earth types in this regard (SE1, SE2 and SE3). For type SE1, planets with M_p and R_p lying between the iron and silicate curves, a wide range of compositions are possible, including H₂O-rich and H₂O-poor conditions. On the other hand, for type SE2 planets with M_p and R_p lying between the silicate and H₂O curves, a volatile-rich envelope (e.g. made of H/He and H₂O) is required

to explain the density, unless, in rare cases, where a C-rich composition can be invoked based on the stellar abundances (e.g. Madhusudhan *et al.* 2012; Moriarty *et al.* 2014). For typical O-rich host stars, therefore, type SE2 planets are good candidates for hosting H₂O-rich envelopes and atmospheres. Finally, type SE3 super-Earths with M_p and R_p lying above the H₂O curve, necessarily require an envelope composition lighter than H₂O, most likely an H/He envelope and an atmosphere (e.g. Seager *et al.* 2007). Using these attributes, the atmospheric mean molecular mass (μ) of super-Earths of different types can be constrained in different ways as discussed below.

Upper-limit on μ of SE3-type atmospheres

In SE3-type planets, which are expected to host volatile-rich envelopes, nominal constraints can be placed on the μ of the atmosphere from the mass and a monochromatic radius. For such super-Earths, a minimum thickness of the atmosphere can be defined as the difference between the observed radius (R_p) and the radius of a 100% water planet ($R_{\text{H}_2\text{O}}$) with the observed mass (M_p) (Kipping *et al.* 2013). Expressing the atmospheric thickness (H) in a molecular spectral band in terms of the scale height (H_{sc}) of the atmosphere gives

$$R_p - R_{\text{H}_2\text{O}}(M_p) = N_{\text{sc}} H_{\text{sc}} = N_{\text{sc}} k_B T / \mu g, \quad (1)$$

where N_{sc} is the number of scale heights of the atmosphere contributing to the effective radius of the planet at the observed wavelength, and is typically of the order 5–10 (see subsection ‘Transmission spectra’). Here, μ is the mean molecular mass of the atmosphere, g is the acceleration due to gravity, k_B is the Boltzmann constant, and T is a characteristic temperature of the atmosphere at the day – night terminator of the planet. Equation (1) can be used to derive a nominal upper-limit on the atmospheric μ as

$$\mu \leq \mu_{\text{max}} = \frac{10 k_B T_{\text{eq}}}{g_0(M_p)[R_p - R_{\text{H}_2\text{O}}(M_p)]}. \quad (2)$$

Here a characteristic T of T_{eq} and a maximal N_{sc} of 10 are assumed, where T_{eq} is the equilibrium temperature of the planet assuming full redistribution (see e.g. Madhusudhan 2012), and $g_0(M_p)$ is the acceleration due to gravity of a pure-H₂O planet with a mass M_p and is given by $GM_p/R_{\text{H}_2\text{O}}$, where G is the gravitational constant.

Upper-limit on μ of SE1- and SE2-type planets

For planets in the SE1 and SE2 types, hardly any constraints can be placed on the atmospheric μ by a monochromatic radius measurement, as their masses and radii can be explained by various interior compositions, as discussed above. For planets in these classes, multi-wavelength observations of the radius (i.e. transmission spectra) are required to discern the presence of an atmosphere. The vertical extent of the atmosphere ($N_{\text{sc}} H_{\text{sc}}$ in equation (1)) for such planets is derived from the difference between radius measured in a molecular band ($R_{p,\text{molec}}$) and that measured in a spectral band with no strong opacity ($R_{p,0}$), i.e. an ‘opacity window’ (see subsection

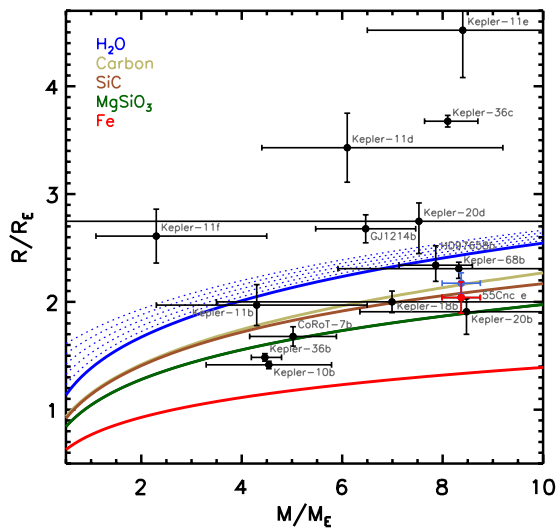


Fig. 1. Masses and radii of super-Earths and theoretical mass – radius relations. The coloured solid curves show mass – radius relations predicted by internal structure models of planets with different uniform compositions shown in the legend in the same order as the curves, i.e. Fe (bottom-most curve) to H₂O (top-most curve). The model curves are from Madhusudhan *et al.* (2012). The blue dotted curves show maximum-radius curves (see subsection ‘Optimal mass – radius space for H₂O detectability’) for pure-H₂O planets with H₂O-rich atmospheres of different temperatures (500, 1000, 1500, 2000 and 2500 K) as observed in absorption bands of H₂O in transit; curves with larger radii correspond to higher temperatures. The black circles with error bars show measured masses and radii of known transiting super-Earths ($M_p = 1 - 10 M_{\oplus}$), adopted from the exoplanet orbit database (Wright *et al.* 2011). Two values of radii are shown for 55 Cancri e. The red data point shows the radius measured in the visible, and the blue data point shows a grey radius obtained by combining visible and IR measurements (Winn *et al.* 2011; Gillon 2012).

‘Atmospheric thickness and transit depth’). The constraint on μ is then given by

$$\mu \leq \mu_{\max} = \frac{10 k_B T_{\text{eq}}}{g_0(M_p, R_{p,0})[R_{p,\text{molec}} - R_{p,0}]}, \quad (3)$$

where $g_0(M_p, R_{p,0}) = GM_p/R_{p,0}^2$. This approach which is applicable to all super-Earth types, is discussed in more detail section ‘Constraints from atmospheric spectra’.

Optimal mass–radius space for H₂O detectability

Given the mass and temperature of a super-Earth, equation (2) can be used to define an upper-limit on the observable radius in a H₂O absorption band for super-Earths with H₂O-rich atmospheres. The maximum possible radius of a H₂O-rich super-Earth of a given mass can be approximated by the sum of the radius of a pure-H₂O planet of the same mass and the maximum possible atmospheric thickness for a given planetary temperature:

$$R_p \leq R_{p,\text{max}}(M_p) = R_{\text{H}_2\text{O}}(M_p) + 10 k_B T_{\text{eq}}/18 \mu g_0. \quad (4)$$

Here a pure H₂O atmosphere is assumed with a μ of 18 amu; μ is the atomic mass unit (amu).

Therefore, given the M_p and T_{eq} of a super-Earth, its radius should lie below $R_{p,\text{max}}$ for it to host a H₂O-rich atmosphere. Figure 1 shows curves of $R_{p,\text{max}}$ for H₂O-rich planets for a wide range of temperatures ($T_{\text{eq}} = 500 - 2500$ K) encompassing those of currently known super-Earths. These curves define the limits of $M_p - R_p$ space for detecting H₂O-rich super-Earths; i.e. planets with R_p above a curve with the corresponding T_{eq} are unlikely to host H₂O-rich atmospheres. As an example, the super-Earth GJ 1214b with $T_{\text{eq}} \sim 550$ K is less likely to host a H₂O-rich atmosphere (see subsection ‘Constraints from internal structure models’ for the detailed discussion). Additionally, as shown in Fig. 1, the available $M_p - R_p$ space for detecting H₂O-rich super-Earths is larger for hotter planets.

Constraints from atmospheric spectra

In this section, we attempt to answer the question of which super-Earths are best targets for atmospheric characterization. Our goal here is to identify factors which influence the observable signal of a H₂O-rich atmosphere, so as to aid in selecting optimal super-Earths for follow-up observations and detailed atmospheric characterization. In order to model the spectra, we use the one-dimensional (1D) approach developed in Madhusudhan & Seager (2009) which allows parametric prescriptions for the compositions and temperature structures, and is applicable over a wide range of temperatures and compositions (e.g. Madhusudhan & Seager 2009; Madhusudhan 2012).

Transmission spectra

A transmission spectrum, observed when the planet is in transit, probes the atmosphere near the day – night terminator of the planet. Several recent studies have investigated methods to use transmission spectra of super-Earths to constrain their various atmospheric properties, including mean-molecular masses, temperature profiles, and the presence of scatterers (e.g. Miller-Ricci *et al.* 2009; Benneke & Seager 2012, 2013; Howe & Burrows 2012). Figures 2 and 3 show model transmission spectra with the bulk parameters (planet radius and gravity, and stellar radius) of the GJ 1214b system, but exploring different chemical compositions and temperatures. For ease of illustration, in these models we assume isothermal temperature profiles, also because infrared (IR) transmission spectra are not strongly sensitive to the temperature profile at the terminator (Miller-Ricci & Fortney 2010; Howe & Burrows 2012). The H₂O-rich models comprise 100% H₂O, and the H₂-rich atmospheres comprise Solar abundance composition (Madhusudhan & Seager 2011), i.e. H₂ and He constitute $\sim 99.9\%$ of the composition by volume but contribute minimal spectral features, and the rest in molecules such as H₂O, CH₄, CO and CO₂ which contribute the prominent spectral features.

‘Surface radius’ of a super-Earth

Knowing the surface radius of a super-Earth is important to constrain its interior composition. Transit depths, or equivalently radii, of super-Earths have been reported in multiple bandpasses in the visible and IR wavelengths. Radius

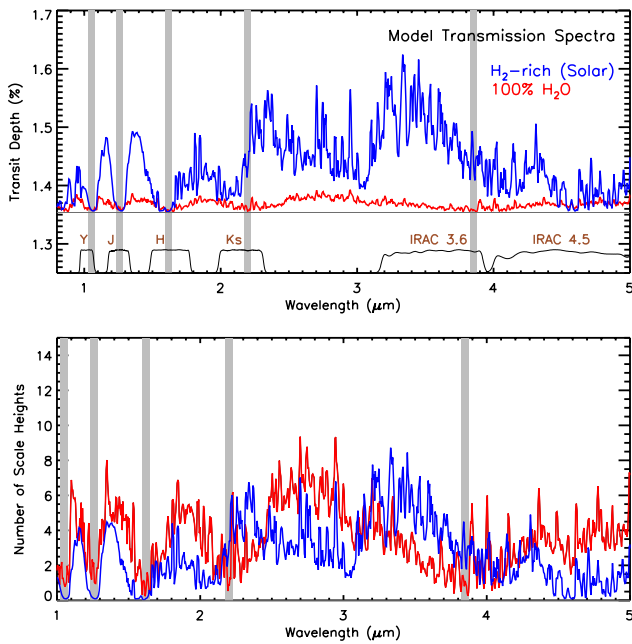


Fig. 2. Model transmission spectra with system parameters of GJ1214b. *Top panel:* The blue and red curves show model transmission spectra for an atmosphere with H₂-rich and H₂O-rich composition. For the H₂-rich case, a solar abundance composition in thermochemical equilibrium was assumed. The horizontal grey line shows the transit depth corresponding to the bulk radius of the planet, i.e. the ‘surface’, which can be observed in the opacity windows (see subsection ‘‘Surface radius’’ of a super-Earth’). The grey vertical bands show opacity windows for a H₂O-rich atmosphere in the near-IR, shown in 0.05 μm-wide bands centred at 1.05, 1.26, 1.62, 2.20 and 3.85 μm. The black curves at the bottom show commonly used photometric bandpasses: *Y*, *J*, *H* and *Ks*, which are accessible from the ground and *Spitzer* IRAC bands at 3.6 and 4.5 μm. *Bottom panel:* The blue and red curves show the same spectra as in the top panel but in units of number of scale heights ($N_{\text{sc},\lambda}$; see equation (5)) in the atmosphere above the ‘surface’, i.e. the grey line in the top panel.

measurements of a super-Earth at different wavelengths cannot be combined to improve upon the measurement uncertainties, because different spectral bandpasses encode information from different depths of the planetary atmosphere. On the other hand, radii of super-Earths are routinely used to constrain their interior compositions, irrespective of the observed spectral bandpass (e.g. Demory *et al.* 2011; Winn *et al.* 2011; Gillon *et al.* 2012). Such an exercise assumes that the radius used represents the bulk radius of the planet, without any contribution from an overlying atmosphere. Therefore, the resulting constraints on the interior composition can be erroneous if the adopted radius was measured at wavelengths where significant absorption from an atmosphere is possible. Thus, it is important to identify spectral bandpasses in which the radii measured represent the bulk ‘surface’ radius (R_{ps}) of the planet and those in which the radii may include significant contribution from the atmosphere. Here, ‘surface’ is nominally defined as the altitude where $\tau \sim 1$ when observed at wavelengths with minimal atmospheric opacity. In ‘opacity windows’, where atmospheric molecular line absorption is

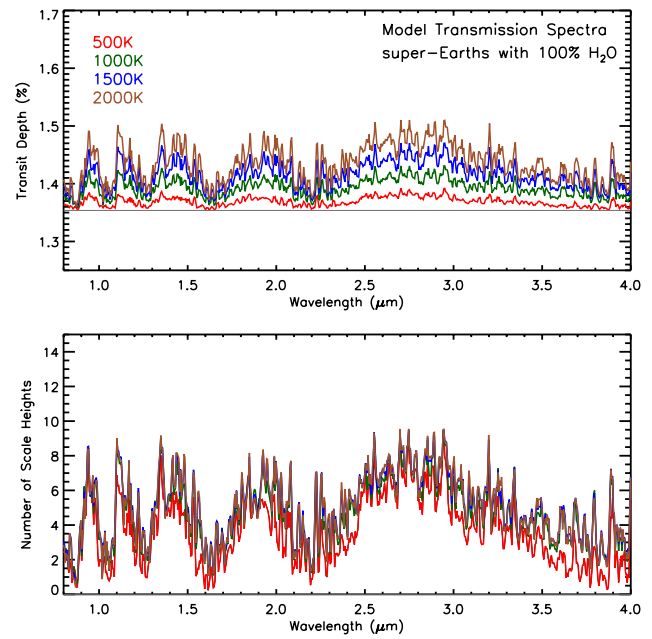


Fig. 3. Model transmission spectra of H₂O-rich super-Earths as a function of atmospheric temperature. *Top panel:* All the spectra assume a H₂O-rich composition and isothermal temperature profiles with the specified temperatures. *Bottom panel:* Spectra in units of $N_{\text{sc},\lambda}$ corresponding to spectra in top panel (see the caption of Fig. 2 for description). The models show that spectral features are enhanced with increasing temperature due to the increasing scale height (equation (5)), but the number of scale heights probed by the spectra is relatively independent of temperature.

minimal, the $\tau \sim 1$ surface may imply (a) a physical solid/liquid surface; (b) the deeper, high pressure, regions of a gaseous atmosphere where collision-induced absorption (CIA) may contribute significant opacity; or (c) the presence of a cloud deck aloft in the atmosphere. In the presence of CIA or cloud opacity, R_{ps} represents only an upper-limit on the bulk radius of the planet.

We identify spectral ranges of several opacity windows in Fig. 2, which provide ideal bandpasses at which to measure R_{ps} of super-Earths (e.g. narrow bands at 1.05, 1.26 and 1.62 μm). As shown in the figure, all the spectra approach R_{ps} of the planet at these wavelengths where there is minimal H₂O absorption and hence the starlight passes largely unimpeded through the planetary atmosphere. These bandpasses also coincide with the bands in which telluric H₂O contamination is minimal. As such, the conventional near-IR bandpasses of *Y* (1.0 μm), *J* (1.2 μm), *H* (1.6 μm) and *K* (2.1 μm), which are accessible with ground-based facilities and partly with the *HST* WFC3 spectrograph, provide good bandpasses to measure surface radii of H₂O-rich super-Earths, which can be used to constrain their bulk compositions. Ideally, however, narrower bands identified in Fig. 2 would provide the best estimates of R_{ps} .

Atmospheric thickness and transit depth

The wavelength-dependent super-Earth radius ($R_{\text{p},\lambda}$) measured outside the opacity windows can include contributions

from molecular opacity in the planet's atmosphere and, hence, can be larger than the surface radius. The λ -dependent thickness of the atmosphere (H_λ), as alluded to in equation (1), is given by

$$H_\lambda = R_{p\lambda} - R_{ps} = N_{sc,\lambda} k_B T_{eq} / \mu g. \quad (5)$$

For a transiting super-Earth, the transit depth at primary eclipse is given by

$$\delta_\lambda = R_{p\lambda}^2 / R_{s\lambda}^2 = (R_{ps} + H_\lambda)^2 / R_{s\lambda}^2, \quad (6)$$

where $R_{s\lambda}$ is the stellar radius. Therefore, the λ -dependent contribution of the atmosphere to the transit depth is given by

$$\Delta_\lambda \sim 2H_\lambda R_{ps} / R_{s\lambda}^2 = 2N_{sc,\lambda} k_B T_{eq} R_{ps} / (\mu g R_{s\lambda}^2). \quad (7)$$

This quantity, Δ_λ , constitutes the 'signal' when planning observations of a super-Earth atmosphere. For a transiting super-Earth, T_{eq} , R_{ps} and R_s are expected to be known from the system parameters. On the other hand, $N_{sc,\lambda}$ and μ which depend on the chemical composition of the planetary atmosphere, are not known *a priori* and, hence, need to be estimated based on theoretical models. For an assumed molecular composition, μ is known, e.g. 2.37 for a solar-composition (dominated by H_2 and He) atmosphere, 18 for 100% H_2O , 44 for 100% CO_2 , etc.

We use model spectra to estimate $N_{sc,\lambda}$ for a representative range of atmospheric compositions and temperatures. The lower panel of Fig. 2 shows $N_{sc,\lambda}$ for solar as well as H_2O -rich atmospheric compositions for model transmission spectra of super-Earth GJ 1214b. For both models, in the opacity windows $N_{sc,\lambda}$ is close to zero, leading to $H_\lambda \sim 0$ and $\Delta_\lambda \sim 0$ and hence $R_{p,\lambda} = R_{ps}$. On the other hand, at wavelengths corresponding to the molecular absorption features, $N_{sc,\lambda}$ is non-zero and can be as high as 8 at the centre of the absorption bands, depending on the strength of the feature. Therefore, in estimating transit depths of super-Earth atmospheres using equations (5)–(7), the following values of $N_{sc,\lambda}$ are recommended for a given chemical composition:

$$\begin{aligned} N_{sc,\lambda} &\sim 0 \quad (\text{in opacity windows}), \\ N_{sc,\lambda} &\sim 5 - 8 \quad (\text{in molecular bands}). \end{aligned} \quad (8)$$

These values of $N_{sc,\lambda}$ hold generally true irrespective of the atmospheric temperatures, as discussed in the following subsection 'Effect of temperature' and in Fig. 3.

Effect of temperature

For a super-Earth with a given radius and composition, hotter atmospheres are more conducive to atmospheric observations and characterization. As shown in Fig. 3, for a H_2O -rich atmosphere, the transit depth in the H_2O absorption bands increases linearly with temperature, since the atmospheric scale height, and hence the atmospheric thickness (H_λ), depend linearly on temperature, as discussed in equations (5) and (7) (also see Howe & Burrows 2012). On the other hand, the transit depths in the opacity windows remain almost unaffected. Therefore, given a host star, a close-in super-Earth orbiting it offers better chances for atmospheric molecular detections compared to the same planet orbiting farther out. In this

regard, even though cool super-Earths represent a natural progression towards finding habitable planets, they are less optimal for atmospheric characterization via transmission spectroscopy as exemplified by several recent studies of GJ 1214b (e.g. Bean *et al.* 2011; Berta *et al.* 2012; Désert *et al.* 2011). It is to be noted, however, as shown in the bottom panel of Fig. 3, that the atmospheric thickness in scale heights ($N_{sc,\lambda}$) for a H_2O -rich atmosphere is independent of the temperature, so equation (8) is still applicable.

Effect of clouds

The presence of clouds in a super-Earth atmosphere can critically influence the interpretation of its transmission spectrum. Recent observations have suggested the possibility of clouds and/or hazes in a wide range of exoplanetary atmospheres (Pont *et al.* 2008; Madhusudhan *et al.* 2012; Marley *et al.* 2013; Morley *et al.* 2013). Clouds are particularly important in a super-Earth atmosphere because they can obscure the spectral features of the atmosphere leading to a nearly featureless 'flat' transmission spectrum in the IR. A similar spectrum with subsided spectral features can also be caused due to a high mean-molecular mass, e.g. rich in H_2O , CO_2 , etc., as shown in Fig. 2. Owing to this degenerate set of solutions, observations of featureless spectra can be challenging to interpret, requiring very high-precision observations to break the degeneracy. The super-Earth GJ 1214b is a classic example in this regard (discussed in detail in subsection 'The atmosphere of super-Earth GJ 1214b').

High-temperature super-Earths are better candidates for atmospheric characterization due to the lower probability of clouds in their atmospheres. The presence of clouds, and their chemical composition, is a strong function of the temperature. Several recent studies have investigated the compositions of clouds in exoplanetary atmospheres (e.g. Howe & Burrows 2012; Kempton *et al.* 2012; Marley *et al.* 2013; Morley *et al.* 2013). Figure 4 shows condensation temperatures for several compounds expected in planetary atmospheres. At very low temperatures ($T \leq 300$ K), H_2O itself condenses out of the upper atmosphere, making spectroscopic observations of H_2O in super-Earths extremely challenging, similar to the challenges in measuring H_2O abundances in giant planets in the solar system (see e.g. Atreya 2010). On the other hand, even for warmer atmospheres ($T \sim 300$ – 1000 K), several other volatile species, such as NaCl, KCl, Na_2S , etc., can condense out leading to cloudy super-Earth atmospheres in this temperature range, as is likely the case with the super-Earth GJ 1214b (Bean *et al.* 2011; Morley *et al.* 2013). Furthermore, even very high-temperature atmospheres ($T \sim 1000$ – 2000 K) can host clouds made of refractory species (e.g. $MgSiO_3$, Fe, etc.).

Refractory condensates which form in high- T atmospheres tend to be heavier than low- T volatile condensates, and, hence, would likely lead to less extended cloud altitudes due to efficient gravitational settling of the condensates (see e.g. Spiegel *et al.* 2009). Consequently, higher- T super-Earth atmospheres could be expected to have lesser cloud covers, leading to strong spectral signatures. Furthermore, extremely

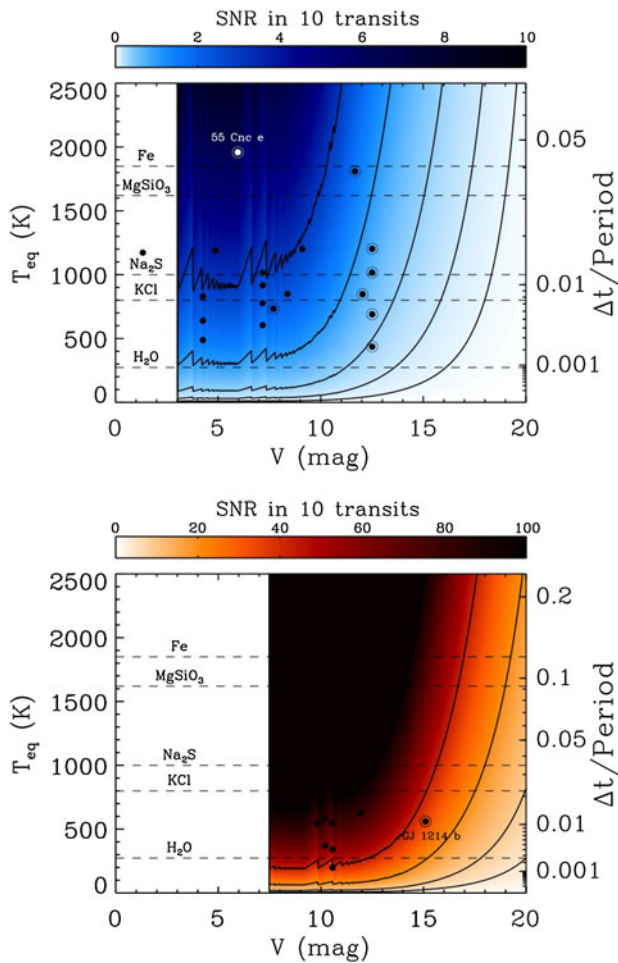


Fig. 4. Sensitivity simulations of the detection of the atmospheric H₂O feature at 1.4 μm in H₂O-rich super-Earths using the *HST* WFC3 spectrograph in spatial scanning mode. Calculations were made for transits of a G8 V star (e.g. 55 Cnc) in the top panel (blue) and transits of an M4 V star (e.g. GJ 1214) in the bottom panel (red). S/N contours of 0.03, 0.1, 0.3, 1 and 3 are shown in top panel, and contours of 1, 3, 10 and 30 are shown in the bottom panel. In ten transits, H₂O would be detected in 55 Cnc e at an S/N ~ 6.4 and GJ 1214b an S/N ~ 21.5. Parameter space in the GJ 1214 panel is limited to stars with $V \geq 7.5$, set by the brightest known M star (GJ 411). Other known exoplanetary systems with similar host star spectral type are shown with filled circles, and transiting exoplanets indicated with large open circles. Condensation curves of various compounds at 1 bar are shown. Sensitivities are calculated assuming no obscuring clouds. In scenarios where clouds are present, a definitive detection of the atmosphere may not be possible, even at high S/N, e.g. in the case of GJ 1214b.

irradiated super-Earths with $T \gtrsim 2000$ K, such as 55 Cancri e, form a potentially ideal sample with ‘cloud free’ atmospheres which present the best chances for detecting H₂O-features in super-Earth spectra.

Thermal emission spectra

Contrary to transmission spectra, thermal emission spectra of a transiting planet observed at secondary eclipse probe its dayside atmosphere. Such spectra allow constraints on both the chemical composition as well as temperature profile of the

planet’s dayside atmosphere. Observations of thermal emission have been reported for several dozens of giant exoplanets, but are only beginning for transiting super-Earths (e.g. Demory *et al.* 2012; Gillon *et al.* 2014). The primary challenge is that the eclipse depth, which is a measure of the planet – star flux ratio, depends on both the radius and temperature of the planet and star, and can be significantly smaller than the transit depth. The planet – star flux ratio is given by

$$\frac{f_{p\lambda}}{f_{s\lambda}} = \frac{B_{\lambda}(T_p)R_p^2}{B_{\lambda}(T_s)R_s^2}, \quad (9)$$

where $f_{p\lambda}$ and $f_{s\lambda}$ are the fluxes from the planet and star, respectively, $B_{\lambda}(T)$ is the Planck function, and T_p (T_s) and R_p (R_s) are the brightness temperature and radius of the planet (star), respectively. As evident from equation (9), the eclipse depth is lower than the transit depth, equation (6), by a factor of $B_{\lambda}(T_p)/B_{\lambda}(T_s)$, and is therefore harder to detect, especially for cooler planets. It is clear from equation (9) that for a given star, bigger and hotter planets lead to higher planet-star flux contrasts. Consequently, the only robust detection of thermal emission from a super-Earth has been reported for 55 Cancri e with $T_{\text{eq}} \sim 2000 - 2400$ K (Demory *et al.* 2012). Despite the apparent challenge in observing thermal emission from super-Earths, emission spectra provide unique constraints on the vertical temperature profile and chemical composition on the dayside atmosphere which is inaccessible from transmission spectra (see section ‘Case studies’).

‘Surface temperature’ and atmospheric constraints

Observations of thermal emission from super-Earths in opacity windows allow determination of their ‘surface’ temperatures (T_{st}). As discussed in subsection ‘Surface radius of a super-Earth’, opacity windows are wavelengths where the opacity in the planetary atmosphere is minimal. Radiation emitted from the planetary surface in these spectral bandpasses traverse unimpeded through the planetary atmosphere before reaching the observer. Consequently, brightness temperatures measured in such bandpasses constrain the ‘surface temperatures’ of the super-Earths. For planets with gaseous atmospheres, such observations can constrain the temperature in the lower atmosphere (Madhusudhan 2012), irrespective of the atmospheric composition. We discuss these aspects in subsection ‘Constraints from thermal emission spectra’ and Fig. 7. For example, Fig. 7 shows model emission spectra for super-Earth 55 Cancri e with different atmospheric compositions (solar composition and H₂O-rich), and a blackbody spectrum corresponding to the temperature of the lower atmosphere, i.e. the surface temperature. As shown in the figure, the different spectra converge to the blackbody spectrum in the opacity windows in the *Y*, *J*, *H* and, to some extent, the *K* bands.

On the other hand, for wavelengths corresponding to molecular absorption bands, the $\tau \sim 1$ surface lies higher up in the atmosphere. Therefore, brightness temperatures measured in the molecular bands allow joint constraints on the temperature profiles and molecular composition of the dayside atmosphere, as has been extensively demonstrated for hot Jupiter

atmospheres (Madhusudhan *et al.* 2011). We discuss model atmospheres and spectral features in thermal emission for specific super-Earths in section ‘Case studies’.

Prospects with *HST* and optimal discovery space

In this section, we investigate the following fundamental question: What properties of super-Earths and their host stars allow the best chances to detect H₂O in their atmospheres with existing facilities? To this end, we consider *HST* WFC3 spectrograph as our instrument of choice, since this is the only space-based instrument, which currently has the spectroscopic capability to detect H₂O in exoplanetary atmospheres (e.g. Deming *et al.* 2013). In our study, we consider two archetypes for stellar hosts and planetary sizes, GJ 1214b and 55 Cancri e, and estimate the detectability of H₂O features in each case but over a wide range in planetary temperatures and stellar brightnesses.

Our sensitivity estimates, shown in Fig. 4 and described below, were derived in the context of a detection of the 1.4 μ m H₂O feature. However, the results are applicable to any feature in the IR passband from 0.9 to 1.65 μ m. The recently implemented spatial scanning capability of *HST* WFC3 makes it possible to observe bright targets with a dense temporal sampling. This technique has proved very successful for exoplanet transmission spectroscopy (e.g. McCullough & MacKenty 2012; Deming *et al.* 2013). The efficiency and precision of the spectrophotometry are greatly improved by scanning the point source over the detector such that the counts are distributed over a wide range of pixels.

While the current Exposure Time Calculator (ETC) for WFC3 does not calculate the implementation of this new scanning mode, it is straightforward to estimate the exposure time and expected S/N, as detailed in McCullough & MacKenty (2012). We assume a 256 pixel subarray to ensure parallel buffer dumps so that there is no interruption in the data acquisition. We use model spectra of a G8 V and an M4 V spectral class (Pickles 1998), scaled to the appropriate brightness, to estimate the count rate in the passband of interest as a function of *H* magnitude, which is the band close to the 1.4 μ m H₂O line of interest. The count contributions of the sky, dark current, thermal background and readout noise derived using the ETC are minimal given the brightnesses of targets in question.

Instead of the light being concentrated as a point source, it is distributed over scores of pixels. However, the scan rate (*R* in arcsec s⁻¹) is limited to 5 arcsec s⁻¹. The maximum number of scanned pixels is 200, although fewer are used if the count rate permits and a lower scan rate is needed. In order to avoid approaching the non-linearity regime of the detector, we limit the exposure to <60% of the maximum well depth. A nominal *HST* orbit length of 2700 s is assumed. Together with the optimal exposure time, we include the nominal overhead time (60 s), scan return time (5 s) and the readout time (0.3 s).

The S/N estimates are based on the expected atmospheric signal as described in equation (7). The noise estimates are derived by binning over the entire 1.4 μ m H₂O feature using a

passband of 0.2 μ m. Sensitivity estimates are made for two scenarios, one corresponding to circumstances similar to 55 Cnc e, a super-Earth in orbit around a G8 V star (top panel in Fig. 4), and one similar to GJ 1214b, a super-Earth in orbit around an M star (bottom panel in Fig. 4). Our sensitivity simulations match the actual noise levels of the first observations of transiting exoplanets using the spatial scanning mode (Deming *et al.* 2013).

In calculating the signal for each scenario, we adopt the planetary radius and gravity and the stellar spectrum of the prototype, and we vary the equilibrium temperature (i.e. semi-major axis) of the planet and the stellar brightness. Both planets, GJ 1214b and 55 Cnc e, are identified, and shown with the sample of known super-Earth (i.e. $M \sin i < 10$) exoplanets with host stars that have the same approximate spectral type (4900 K < $T_{\text{eff}} < 5600$ K, roughly G5 to K2 for the 55 Cnc example, and $T_{\text{eff}} < 3800$ K, roughly any M star for the GJ 1214 example). Those exoplanets that are known to transit are shown with a large open circle surrounding the filled symbol. In the case of GJ 1214, it is the only known transiting exoplanet that fits these criteria.

Ostensibly, our estimates agree with the common notion that brighter and/or smaller host stars greatly enhance the detectability of super-Earth atmospheres. While a higher planetary temperature around a larger star, as in the case of 55 Cnc e, can also enhance the transit signal, the dependence of the signal on the stellar radius is stronger, as shown in equation (7). For example, in these calculations, we estimate an S/N ~ 21.5 in the 1.4 μ m H₂O feature to be obtained in observations of ten transits of GJ 1214b (S/N = 1, 3, 10 and 30 contours are shown), whereas for 55 Cnc e, ten transits results in an estimated S/N of ~ 6.4 (S/N = 0.03, 0.1, 0.3, 1 and 3 contours are shown).

However, there are two additional important factors, beyond the nominal sensitivity estimates discussed above, that need to be considered while planning atmospheric observations of super-Earths. First, as discussed in subsection ‘Effect of clouds’, clouds can play a critical role in low-temperature atmospheres of super-Earths. In our sensitivity estimates discussed above, we have assumed spectral features of H₂O as observed in a cloud-free atmosphere. However, the strength of the actual atmospheric signal is highly dependent on the presence or absence of clouds. Figure 4 shows condensation temperatures of some common species at a nominal 1-bar pressure (Lodders 2002; Sudarsky *et al.* 2003; Morley *et al.* 2013). As shown in the figure, a wide range of condensates are possible in super-Earth atmospheres, volatile species for temperatures below ~ 1000 K and refractory species for temperatures as high as ~ 2000 K. The presence of resulting clouds, if present at high-enough altitudes, can even completely mask the spectral features in a transmission spectrum leading to a featureless spectrum.

Consequently, atmospheres of low-temperature super-Earths ($T_{\text{eq}} \lesssim 1000$) can be challenging to observe and interpret even if the planet-star radius ratios and sensitivity estimates are highly favourable, as is the case for GJ 1214b, as discussed in subsection ‘The atmosphere of super-Earth

GJ 1214b'. While super-Earths with $T_{\text{eq}} \sim 1000 - 2000$ can still host clouds made of refractory condensates (silicates, Fe, etc.), the cloud-altitude would likely be lower compared to volatile condensates (e.g. NaCl, H₂O, etc.) owing to more efficient gravitational settling due to heavier molecules. On the other hand, very high- T super-Earths with $T_{\text{eq}} \gtrsim 2000$, such as 55 Cancri e, likely present the clearest atmospheres with the best potential for observations of their spectra. The super-Earth 55 Cancri e is particularly favourable given its extremely bright ($V = 5.95$; $H = 4.27$) host star.

The second factor is that the short periods of high- T_{eq} super-Earths provide a much higher number of transit opportunities. Atmospheric characterization of any super-Earth with current instruments, such as the *HST* WFC3, require co-adding multiple transits to be able to make definitive detections of molecular features. Consequently, it is important to be able to schedule multiple transits for a dedicated programme to characterize super-Earth atmospheres. Short period planets are advantageous in this regard by offering a higher frequency of transit opportunities. For example, for 55 Cnc e, ~ 495 transits occur in a year, compared to 230 transits of GJ 1214b in a year.

Case studies

The small sizes of super-Earths mean that observing their atmospheres requires particularly favourable conditions that either enhance the signal or improve the precision. For a given planet size, the transit and eclipse depths are larger for smaller host stars and hotter planets. On the other hand, a brighter host star yields better precision in the observations. While GJ 1214b orbits a small star (an M dwarf), 55 Cancri e orbits an extremely bright ($V = 6$) Sun-like star in a very close (18 h) orbit, because of which both these super-Earths are great candidates for atmospheric studies. In what follows, we discuss the atmospheric constraints for these two planets possible with observations using existing facilities.

The atmosphere of super-Earth GJ 1214b

The super-Earth GJ 1214b (Charbonneau *et al.* 2009) is one of the most observed exoplanets to date. The planet, with a mass (M_{p}) of $6.47 M_{\oplus}$ and a radius (R_{p}) of $2.68 R_{\oplus}$ orbits a late M dwarf ($R_{\text{s}} = 0.21 R_{\odot}$, $T_{\text{eff}} = 3030$ K), resulting in a large transit depth. Consequently, despite the relatively faint host star ($V = 15.1$) and a relatively low equilibrium temperature ($T_{\text{eq}} \sim 550$ K), the planet is particularly suitable for transit observations and atmospheric characterization.

Constraints from transmission spectroscopy

Transmission spectroscopy and photometry of the planet's atmosphere at the day–night terminator have been reported over a wide spectral baseline ranging from the visible to mid-IR ($\sim 0.6 - 5 \mu\text{m}$) (e.g. Bean *et al.* 2010, 2011; Croll *et al.* 2011; Désert *et al.* 2011; Berta *et al.* 2012; de Mooij *et al.* 2012; Kriedberg *et al.* 2014). The observed bandpasses, from a wide array of facilities from ground and space, encompass spectral features of prominent molecules such as H₂O and CH₂, as well as continuum bandpasses or opacity

windows (see subsection 'Surface radius of a super-Earth'). Several modelling efforts in the recent past have aided in the interpretation of the observed spectra (see e.g. Miller-Ricci & Fortney 2010; Bean *et al.* 2011; Benneke & Seager 2012; Kepmton *et al.* 2012; Howe & Burrows 2012; Morley *et al.* 2013).

The sum total of data shows that the transmission spectrum of the planet is consistent with a flat horizontal line over the entire wavelength range observed to date, as shown in Fig. 5. The flat transmission spectrum of GJ 1214b rules out a cloud-free atmosphere for several plausible compositions, e.g. dominated by H₂, H₂O, CO₂ or CH₄ (Kreidberg *et al.* 2014). However, a featureless transmission spectrum is also consistent with a cloudy atmosphere, of unconstrained composition including a solar abundance H₂-rich composition. In this scenario, the presence of clouds aloft in the atmosphere could be blocking the starlight thereby masking out any molecular absorption features due to the planetary atmosphere. Currently available data are, therefore, inconclusive about the true atmospheric composition of GJ 1214b.

Constraints from internal structure models

The observed mass and radius of GJ 1214b, together with internal structure models, suggest that a cloud-free H₂O-rich atmospheric composition is unlikely for this planet. As discussed in section 'Constraints from mass and radius', GJ 1214b can be classified as an SE3-type super-Earth with its radius, R_{p} , being larger the radius ($R_{\text{H}_2\text{O}}$) of a pure-H₂O planet with the same mass. As such, the radius differential between R_{p} and $R_{\text{H}_2\text{O}}$ can be used to place an upper limit on the mean molecular mass of the planetary atmosphere, as given by equation (2). Considering the parameters of GJ 1214b, we find a μ_{max} of 2.0 ± 0.7 amu, consistent with a H₂-rich atmosphere. Consequently, it is less likely that the observed radius of GJ 1214b can be explained solely by a cloud-free atmosphere with a high μ , e.g. H₂O-rich, in agreement with what is already known from the transmission spectrum as discussed above.

A low atmospheric μ for GJ 1214b would also be consistent with internal structure models which suggest a light-element (H/He) composition for the planetary envelope (Rogers & Seager 2010b; Valencia *et al.* 2013). As shown in Fig. 1, the radius of the planet is higher than the $R_{\text{p,max}}$ for a pure-H₂O planet with a H₂O-rich atmosphere for the mass of GJ 1214b and its T_{eq} of ~ 550 K. We find that a purely H₂O – ice interior of GJ 1214b would require $N_{\text{sc}} \gtrsim 75$ scale heights of a H₂O-rich atmosphere to explain the radius, which is physically implausible, and an even higher N_{sc} for other gases such as CO₂ or N₂. Consequently, as discussed above, a significantly lighter element than H₂O, such as an H-rich atmosphere would be required to explain the radius. Our interpretation is consistent with the results of Rogers & Seager (2010b) who also suggested the requirement of an H/He envelope in the planet to explain its mass and radius. Although our results rule out a cloud-free H₂O-rich atmosphere in GJ 1214b, a H₂O-rich lower atmosphere with a lighter species in the upper atmosphere together with a very high-altitude cloud/haze cover, cannot be conclusively ruled out in the present work.

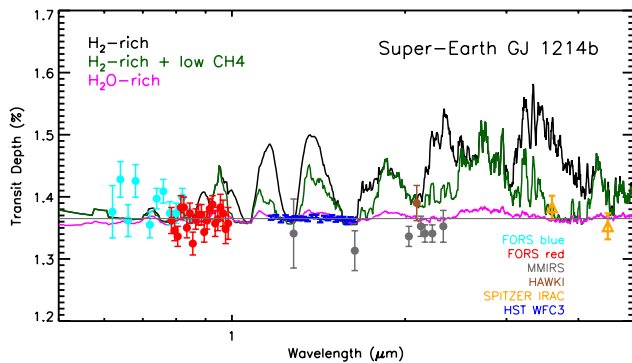


Fig. 5. Observations and model transmission spectra of GJ1214b. The solid curves show model spectra of GJ 1214b with the different chemical compositions described in the legend. The black (green) curve corresponds to a H_2 -rich atmosphere model assuming solar abundances and chemical equilibrium (non-equilibrium). In the green model, CH_4 is depleted by a factor of 100 relative to chemical equilibrium, motivated by similar requirements for the hot Neptune GJ 436b (Madhusudhan & Seager 2011). The magenta model corresponds to a H_2O -rich atmosphere of GJ 1214b. The various symbols with error bars show the observations using different instruments from space and ground, as described in the legend and reported by Bean *et al.* (2011), Désert *et al.* (2011) and Kreidberg *et al.* (2014). Only a subset of all available observations in the literature is shown here for clarity. All the observations in the literature to date are consistent with a flat spectrum, shown as a grey horizontal line, but are also consistent with a cloudy atmosphere of unknown composition. The observations, however, rule out a cloud-free H_2 -rich or H_2O -rich atmosphere (also see Kriedberg *et al.* 2014). In the present work, we also suggest that a H_2O -rich atmosphere is unlikely based on internal structure models (see subsection ‘Constraints from internal structure models’).

Constraints from thermal emission spectra

Observations of thermal emission from GJ 1214b have led to only nominal constraints on its atmospheric composition. Given the low temperature of the planet, thermal emission from GJ 1214b is challenging to observe with existing instruments. Recently, Gillon (2014) reported upper-limits on thermal emission in the *Spitzer* photometric bands at 3.6 and 4.5 μm . The data are consistent with conclusions derived from transmission spectroscopy of GJ 1214b, as discussed in subsection ‘Constraints from transmission spectroscopy’. The data rule out a cloud-free H_2 -rich composition in the dayside atmosphere of the planet. However, the data are consistent with a H_2O -rich atmosphere as well as a cloudy H_2 -rich atmosphere. Additionally, the data are also consistent with a blackbody spectrum with a temperature of 500–600 K, indicating the possibility of an isothermal temperature structure with unconstrained chemical composition. Consequently, current observations of thermal emission from GJ 1214b do not provide any significant constraints beyond what is already known from extensive observations of transmission spectra of the planet.

New observations of thermal emission from GJ 1214b with existing facilities will be challenging, if not impossible. In the wavelength range ($\sim 1\text{--}2.3\ \mu\text{m}$) of current instruments in the

near-IR, e.g. the *HST* WFC3 spectrograph and ground-based instruments, the predicted planet – star flux contrast in dayside thermal emission is below 40 ppm. Detecting such a signal, would require precisions better than 10 ppm, which current instruments are not likely to achieve, particularly given the faint host star ($V = 15.1$). In the future, however, the James Webb Space Telescope (*JWST*) will be able to detect such a weak signal.

The atmosphere of super-Earth 55 Cancri e

The super-Earth 55 Cancri e presents arguably the best chance for comprehensively characterizing a super-Earth atmosphere using both transmission as well as thermal emission spectroscopy. The planet has a mass of $8.4 M_{\oplus}$ and a visible radius of $2.0 R_{\oplus}$, and orbits a nearby G dwarf at a period of 18 h (Demory *et al.* 2011; Winn *et al.* 2011; Endl *et al.* 2012). The parent star is the brightest star ($V = 6$) known to host a transiting exoplanet, and has led to measurements of the planet’s radius at exquisite precision in the visible as well as in the *Spitzer* 4.5 μm IRAC band (Winn *et al.* 2011; Demory *et al.* 2012; Gillon 2012). Furthermore, due to its very short orbit, the planet has an equilibrium temperature of $\sim 2000\text{--}2400\ \text{K}$, which leads to significant thermal emission, as has been observed in the *Spitzer* 4.5 μm IRAC photometric band, the first for any super-Earth (Demory *et al.* 2012).

Constraints from internal structure models

55 Cancri e is an SE2-type super-Earth, as described in section ‘Constraints from mass and radius’, with its M_p and R_p lying between the mass – radius relations of a pure-silicate and a pure- H_2O planet, as shown in Fig. 1. As such, the existence of a potential atmosphere cannot be conclusively constrained without multi-colour atmospheric observations (discussed in subsection ‘Constraints from transmission spectra’). However, the M_p and R_p of 55 Cancri e have led to two contrasting hypotheses for its interior composition, with different implications for its atmospheric composition. Considering a terrestrial-like O_2 -rich mineralogy, consisting of Fe, silicates and H_2O , would require that the planet host a massive ($\gtrsim 10\%$) envelope of supercritical H_2O (Valencia *et al.* 2010) in order to explain the R_p , as suggested in several recent works (Winn *et al.* 2011; Demory *et al.* 2011, 2012; Gillon . 2012). However, it is yet to be conclusively demonstrated if a massive H_2O envelope of the planet would be stable against atmospheric escape (Valencia *et al.* 2010) and instability from nightside condensation (Castan & Menou 2011; Heng & Kopparla 2012) given the long age ($10.2 \pm 2.5\ \text{Gyr}$; von Braun *et al.* 2011) and extreme irradiation of the system. An alternate hypothesis suggests that the planet is C-rich, composed of Fe, C (as graphite + diamond), SiC, and silicates, without the requirement of any volatile envelope (Madhusudhan *et al.* 2012).

The contrasting interpretations for the interior composition of 55 Cancri e suggest three possible compositions for its atmosphere. First, an O_2 -rich composition in the planet requires that the planet host a massive H_2O envelope causing a H_2O -rich atmosphere. Ehrenreich *et al.* (2012) place an upper-limit

on the escape rate of hydrogen resulting from photodissociation of a H_2O -rich atmosphere, and find it consistent with a stable H_2O -rich atmosphere. Second, a C-rich composition would be unlikely to host a H_2O -rich atmosphere, and may even host no atmosphere at all. Finally, the data can also be explained with a H_2 -rich atmosphere overlying an interior of any composition, O_2 -rich or C-rich. These three scenarios for the atmospheric composition of 55 Cancri e can be constrained using spectroscopic observations as discussed below.

Constraints from transmission spectra

Transmission spectroscopy of 55 Cancri e using *HST* WFC3 can constrain the atmospheric composition at the day–night terminator of the planet. Figure 6 shows our model transmission spectra of 55 Cancri e in the three possible atmospheric scenarios (H_2 -rich, H_2O -rich and no atmosphere) and simulated observations assuming ten transits observed with the *HST* WFC3 as derived in section ‘Prospects with *HST* and optimal discovery space’. As shown in Fig. 6, the radii of 55 Cancri e previously measured in photometric bandpasses in the visible and *Spitzer* IRAC 4.5 μm band are consistent with any of the three possible compositions. On the other hand, WFC3 observations will be able to conclusively constrain all the three scenarios. As discussed in subsection ‘The atmosphere of super-Earth GJ 1214b’, previous studies have attempted to make a similar determination using *HST* WFC3 for the super-Earth GJ 1214b. However, due to the much lower temperature of GJ 1214b (~ 500 K) clouds of various compositions are possible (e.g. Morley *et al.* 2013), making a conclusive determination of a H_2O -rich atmosphere difficult for that planet. On the other hand, at the 2000–2400 K temperature of 55 Cancri e, clouds of any known composition are highly unlikely to exist, thereby making the interpretation of its transmission spectra substantially easier than that of GJ 1214b.

HST observations will be able to detect the presence of a H_2O -rich atmosphere better than $6\text{-}\sigma$ in the water bands in the WFC3 bandpass, and the presence of a H_2 -rich atmosphere at better than $10\text{-}\sigma$ in the same bands. It is important to note that non-detection in the WFC3 bandpass, although highly unlikely, would be an extremely important result. Such a result would strongly imply the lack of an atmosphere in 55 Cancri e, for which the only known explanation to date is one of a C-rich interior, as discussed in subsection ‘Constraints from internal structure models’. Consequently, a flat spectrum across multi-wavelength observations, including WFC3, of 55 Cancri e can provide conclusive evidence for the lack of a H_2 - or H_2O -rich atmosphere in the planet, without the ambiguities that plague similar efforts for GJ 1214b.

Constraints from thermal emission spectra

55 Cancri e is the only super-Earth for which thermal emission from the planet can be detected using existing instruments, given the extremely high dayside temperature (2400 K) of the planet. Figure 7 shows model thermal emission spectra of 55 Cancri e for the two possible atmospheric compositions, i.e. H_2O -rich versus H_2 -rich based on solar abundances. We find

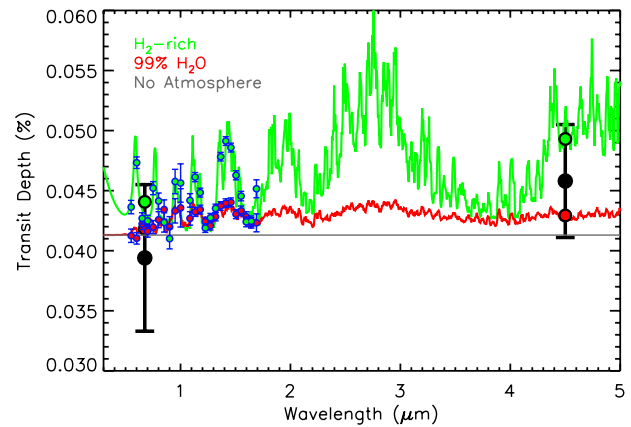


Fig. 6. Model transmission spectra of super-Earth 55 Cancri e. The green and red solid curves show two model spectra of the planet with H_2 - and H_2O -rich compositions, respectively. The grey horizontal curve shows a model spectrum with no atmosphere. The large black circles with uncertainties show photometric measurements of the transit depth in the visible, using the *MOST* telescope (Winn *et al.* 2011), and in the IR at 4.5 μm using the *Spitzer* space telescope (Gillon 2012). The small blue circles with uncertainties show our simulated observations with WFC3 in spatial scanning mode for both the model atmospheres. *HST* WFC3 observations would be able to provide an unambiguous constraint on the chemical composition of the atmosphere, particularly on the possibility of a H_2O -rich atmosphere. The high temperatures on the planet ($T \sim 2000\text{--}2400$ K) also imply that the atmosphere is very likely cloud-free, thereby removing ambiguities in interpretation of the spectra.

that a precision of ~ 5 ppm, which is attainable with ten eclipses observed with *HST* WFC3, would be able to detect thermal emission in the opacity windows, i.e. from the planetary ‘surface’ (see subsection ‘Surface temperature and atmospheric constraints’), at $\gtrsim 5\text{-}\sigma$. The H_2O feature in either scenario, which is given by the flux differential between the blackbody continuum, in the opacity windows, and the emission within the water band, can be detected at $\gtrsim 4\text{-}\sigma$ for both scenarios. A non-detection of an H_2O feature, i.e. the observation of a blackbody spectrum, would imply either the lack of an atmosphere, or an isothermal temperature profile. The degeneracy between the two solutions can be lifted by complementary observations of transmission spectra as discussed in subsection ‘Constraints from transmission spectra’.

A thermal emission spectrum of 55 Cancri e obtained with *HST* WFC3 can allow three specific constraints that are unprecedented for a super-Earth. First, one will be able to determine the thermal profile of the dayside atmosphere of the planet. A thermal profile decreasing with altitude will give rise to molecular absorption features, as seen in the deep water features in Fig. 7. Second, the difference between the continuum regions and strong water absorption or emission features in the WFC3 bandpass can be used to place joint constraints on the temperature gradient as well as the H_2O -abundance in the atmosphere using detailed retrieval algorithms (e.g. Madhusudhan & Seager 2009; Madhusudhan *et al.* 2011; Lee *et al.* 2012; Line *et al.* 2012). Third, the spectral energy distribution of thermal emission can be used to constrain the day–night energy

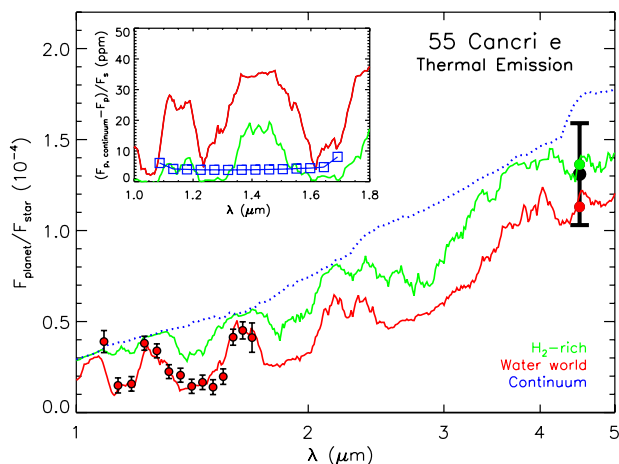


Fig. 7. Thermal emission spectra for 55 Cancri e predicted for different atmospheric compositions. The red curve indicates a H₂O-rich atmosphere, whereas the green curve is representative of an H₂-rich atmosphere. The blue curve shows a blackbody curve corresponding to the bottom optically thick ‘surface’ of the atmosphere, if present. Red data points indicate our simulated WFC3 secondary eclipse observations taken using spatial scanning (see subsection ‘Constraints from thermal emission spectra’). The scatter and error bars are shown assuming a H₂O-rich atmosphere. The large black circle with uncertainties shows the *Spitzer* 4.5 μm detection (Demory *et al.* 2012). The inset shows a close-up of the WFC3 IR red spectral region. The curves show the H₂O-rich and H₂-rich models relative to the blackbody continuum, and the blue squares show the predicted sensitivities. *HST* WFC3 observations will be capable of detecting thermal emission from the planet in all the modelled scenarios and will be able to discriminate between the different models and detect a H₂O-rich atmosphere if present, as discussed in subsection ‘Constraints from thermal emission spectra’

redistribution in the planetary atmosphere (Madhusudhan & Seager 2009).

Discussion and summary

In the present work, we find that detection and characterization of hot super-Earths orbiting nearby stars provide a greater strategic advantage in the coming decade than detecting cool super-Earths close to the habitable zones of their host stars. A habitable planet, with temperatures in the vicinity of ~300 K to sustain liquid water on the surface, is not necessarily inhabited. At a minimum, such a determination would require characterizing the planet’s atmospheric composition. However, the atmospheres of such cool planets will be challenging to detect even using the best facilities expected in the coming decade, including the *JWST*. Even when detected, the likely presence of clouds will confound the interpretation of spectra, as is already the case for the super-Earths GJ 1214b (with $T \sim 500$ K) even with the most extensive observations with current facilities, including *HST*, *Spitzer* and major ground-based facilities. In the future, however, *JWST* is expected to be able to characterize super-Earths like GJ 1214b to greater precision, and more so for hotter planets which will have stronger atmospheric signatures, as discussed in the present work.

At the present time, a more important and tractable question than characterizing habitable exoplanets, is whether H₂O is indeed a dominant constituent of super-Earth atmospheres. Addressing this question is independent of whether the planet is habitable or not. In fact, the best super-Earths that would be able to help answer this question would be transiting super-Earths with very high temperatures and orbit host stars that are either very bright, to allow better spectroscopic precision, or are small in size, to allow larger planet – star radius ratio and flux ratio. Currently, three super-Earths are known to transit such favourable host stars, albeit with a wide range of temperatures: GJ 1214b ($T_{\text{eq}} \sim 550$ K; Charbonneau *et al.* 2009), HD 976548 ($T_{\text{eq}} \sim 900$ K; Dragomir *et al.* 2013) and 55 Cancri e ($T_{\text{eq}} \sim 2000$ –2400 K; Winn *et al.* 2011). Of these, 55 Cancri e offers the best chances for detecting H₂O in both transmission and thermal emission as discussed in the present work. Such hot super-Earths form an ideal sample in which to investigate the possibility and chemical abundances of H₂O-rich atmospheres in super-Earths.

Current and upcoming observational facilities are well suited to characterize H₂O-rich atmospheres in hot transiting super-Earths. We demonstrate in the present work how multi-colour observations of H₂O-rich super-Earths can constrain the surface radii and temperatures of super-Earths, as well as constrain their H₂O abundances. Observations in the opacity windows, which probe the lower region (‘surface’) of a super-Earth atmosphere, are possible with a wide range of ground-based facilities in the near-IR spectral region, particularly the z (1.0 μm), J (1.2 μm), H (1.6 μm) and K (2.1 μm) bands. On the other hand, precise measurements in the H₂O bands at 1.4 μm are possible with the *HST* WFC3 spectrograph. Similarly, molecular features of H₂O and other possible molecules (e.g. CH₄, CO and CO₂) are also accessible with the warm *Spitzer* photometric bandpasses at 3.6 and 4.5 μm. In the future, *JWST* will have the capability to revolutionize atmospheric characterization of hot H₂O-rich super-Earths with high-resolution spectroscopy over a much broader spectral range than is currently available. The prime super-Earths for characterization with *JWST* will be discovered in large numbers by upcoming surveys such as TESS (Ricker *et al.* 2014), CHEOPS (Broeg *et al.* 2013), and PLATO (Rauer *et al.* 2013) from space, and by several ground-based efforts (e.g. Snellen *et al.* 2012; Gillon *et al.* 2013).

These new observational surveys would benefit from focusing on finding close-in transiting super-Earths orbiting bright stars. Very close-in super-Earths of SE2 and SE3 classes with $T_{\text{eq}} \geq 2000$ K would be particularly important, because the resulting planets could be successfully followed up with IR telescopes to search for H₂O in their atmospheres as discussed above. In the present work, we simulated observations using the *HST* WFC3 spectrograph to identify parameters of super-Earth systems which would be most conducive for detecting their H₂O-rich atmospheres. We consider two scenarios of super-Earth host stars, a G dwarf and an M dwarf. We generally conclude that hotter planets around brighter or smaller host stars are more conducive for detecting H₂O-rich atmospheres. In principle, for M dwarf stellar hosts, super-Earths

with T_{eq} as low as 500 K, such as GJ 1214b, could still be favourable for H₂O detection. However, the possibility of clouds in low-temperature super-Earth atmospheres, especially for $T_{\text{eq}} \leq 1000$ K, complicate the interpretation of H₂O from spectra, as known from current observations of GJ 1214b. Consequently, very high-temperature super-Earths ($T_{\text{eq}} \geq 2000$ K) orbiting bright stars currently present the best chances for constraining H₂O-rich atmospheres. Among currently known super-Earths, we find that the super-Earth 55 Cancri e ($T_{\text{eq}} \sim 2000 - 2400$ K) presents the best chances for conclusively determining the presence of a H₂O-rich atmosphere in a super-Earth using spectroscopy in both transmission and thermal emission using *HST* WFC3.

Ultimately, detecting molecules such as H₂O and other bio-signatures in super-Earth atmospheres might be possible to detect for a subset of super-Earths with *JWST*, but for Earth-size planets the wait could be longer depending on the stellar hosts. In the meantime, however, a detailed survey of the abundances of H₂O in the most favourable sample of the hot super-Earth population is possible with existing facilities as discussed above. The resulting constraints can help us estimate the likelihood of H₂O-rich atmospheres in habitable planets that are being discovered in parallel but whose atmospheres cannot be characterized in the near future.

Acknowledgements

NM acknowledges support from the Yale Center for Astronomy and Astrophysics (YCAA) at Yale University for support through the YCAA postdoctoral prize fellowship. SR acknowledges support by the National Science Foundation through Astronomy and Astrophysics Research Grant AST-1313268. We thank Peter McCullough, Avi Mandell and Debra Fischer for helpful discussions. This research has made use of the Exoplanet Orbit Database and the Exoplanet Data Explorer at exoplanets.org.

References

Abe, Y., Abe-Ouchi, A., Sleep, N. H. & Zahnle, K. J. (2011). *Astrobiology* **11**, 443.
 Atreya, S. K. (2010). Atmospheric Moons Galileo would have loved. Galileo's Medicean Moons – their impact on 400 Years of Discovery. (Barbieri, C. *et al.* eds.), Proc. IAU Symp. No. 269, Cambridge University Press, Cambridge.
 Barclay, T. *et al.* (2013). *Astrophys. J.* **768**, 101.
 Batalha, N. *et al.* (2011). *Astrophys. J.* **729**, 27.
 Bean, J. L., Miller-Ricci Kempton, E. & Homeier, D. (2010). *Nature* **468**, 669.
 Bean, J. *et al.* (2011). *Astrophys. J.* **743**, 92.
 Belu, A. R. *et al.* (2011). *Astron. Astrophys.* **525**, A83.
 Belu, A. R. *et al.* (2013). *Astrophys. J.* **768**, 125.
 Bennekke, B. & Seager, S. (2012). *Astrophys. J.* **753**, 100.
 Bennekke, B. & Seager, S. (2013). arXiv:1306.6325B.
 Berta, Z. *et al.* (2012). *Astrophys. J.* **747**, 35.
 Borucki, W. J. *et al.* (2013). *Science* **340**, 587.
 Broeg, C. *et al.* (2013). Hot planets and cool stars, Garching, Germany ed. Roberto, Saglia, EPJ Web Conf., 47, 03005 (arXiv:1305.2270)
 Castan, T. & Menou, K. (2011). *Astrophys. J.* **743**, L36.

Charbonneau, D. *et al.* (2009). *Nature* **462**, 891.
 Croll, B. *et al.* (2011). *Astrophys. J.* **736**, 78.
 de Mooij, E. J. W. *et al.* (2012). *Astron. Astrophys.* **538**, 46.
 Deming, D. *et al.* (2013). *Astrophys. J.* **774**, 95.
 Demory, B.-O. *et al.* (2011). *Astron. Astrophys.* **533**, A114.
 Demory, B.-O. *et al.* (2012). *Astrophys. J.* **751**, L28.
 Désert, J.-M. *et al.* (2011). *Astrophys. J.* **731**, L40.
 Dragomir, D. *et al.* (2013). *Astrophys. J.* **772**, L2.
 Ehrenreich *et al.* (2012). *Astron. Astrophys.* **547**, A18.
 Endl, M. *et al.* (2012). *Astrophys. J.* **759**, 19.
 Fortney, J. J., Marley, M. S., Barnes, J. W. (2007) *Astrophys. J.* **659**, 1661.
 Fressin, F. *et al.* (2013). *Astrophys. J.* **766**, 81.
 Gillon, M. *et al.* (2012). *Astron. Astrophys.* **539**, A28.
 Gillon, M. *et al.* (2014). *A&A*, **563A**, 21
 Gillon, M., Jehin, E., Fumel, A., Magain, P., Queloz, D. (2013). Hot planets and cool stars, Garching, Germany, ed. R. Saglia, EPJ Web Conf., 47, id.03001
 Gong, Y.-X. & Zhou, J.-L. (2012). *Res. Astron. Astrophys.* **12**(6), 678.
 Hedelt, P. *et al.* (2013). *Astron. Astrophys.* **553**, A9.
 Heng, K. & Kopparla, P. (2012). *Astrophys. J.* **754**, 60.
 Howard, A. *et al.* (2012) *Astrophys. J. Suppl.* **201**, 15.
 Howe, A. & Burrows, A. (2012) *Astrophys. J.* **756**, 176.
 Kaltenegger, L. & Traub, W. (2009). **698**, 519.
 Kaltenegger, L., Sasselov, D. & Rugheimer, S. (2013). *Astrophys. J.* **775**, L47
 Kasting, J. F. (1993). 101, 108.
 Kempton, E., Zahnle, K. & Fortney, J. J. (2012). *Astrophys. J.* **745**, 3.
 Kipping, D. M., Spiegel, D. S. & Sasselov, D. D. (2013). *Mon. Not. R. Astron. Soc.*, **434**, 1883.
 Kopparapu, R. K. *et al.* (2013a) *Astrophys. J.* **765**, 131.
 Kopparapu, R. K. *et al.* (2013b). *Astrophys. J.* **770**, 82.
 Kreidberg, L. *et al.* (2014). *Nature* **505**, 69.
 Lee, J.-M., Fletcher, L. N. & Irwin, P. G. J. (2012). *Mon. Not. R. Astron. Soc.* **420**, 170.
 Leger, A. *et al.* (2009). *Astron. Astrophys.* **506**, 287.
 Line, M. *et al.* (2012). *Astrophys. J.* **749**, 93.
 Lodders, K. (2002). *Astrophys. J.* **577**, 974.
 Madhusudhan, N. (2012). *Astrophys. J.* **758**, 36.
 Madhusudhan, N. & Seager, S. (2009). *Astrophys. J.* **707**, 24.
 Madhusudhan, N. & Seager, S. (2011). *Astrophys. J.* **729**, 41.
 Madhusudhan, N. *et al.* (2011). *Nature* **469**, 64.
 Madhusudhan, N. *et al.* (2012). *Astrophys. J.* **759**, L40.
 Marley, M. S., Ackerman, A. S., Cuzzi, J. N. & Kitzmann, D. (2013). In comparative climatology of terrestrial planets (eds. Stephen J. Mackwell, Amy A. Simon-Miller, Jerald W. Harder, and Mark A. Bullock), University of Arizona Press, Tucson, 610 pp., p. 367–391.
 Moriarty, J., Madhusudhan, N. & Fischer, D. (2014). *Astrophys. J.* **787**, 81.
 Morley, C. V. *et al.* (2013). *Astrophys. J.* **775**, 33.
 Miller-Ricci, E. & Fortney, J. J. (2010). *Astrophys. J.* **716**, L74.
 Miller-Ricci, E., Seager, S. & Sasselov, D. (2009). *Astrophys. J.* **690**, 1056.
 Pickles, A. J. (1998). *Publ. Astron. Soc. Pacific* **110**, 863.
 Pont, F., Knutson, H., Gilliland, R. L., Moutou, C. & Charbonneau, D. (2008). *Monthly Notices of the Royal Astronomical Society*, **385**, 109.
 Quintana, E. *et al.* (2014). *Science* **344**, 277.
 Rauer, H. *et al.* (2013). *Experimental Astronomy*, submitted (arXiv:1310.0696)
 Ricker, G. *et al.* (2014). Proc. SPIE, Astronomical Telescopes + Instrumentation, submitted (arXiv:1406.0151).
 Rogers, L. A. & Seager, S. (2010a). *Astrophys. J.* **712**, 974.
 Rogers, L. A. & Seager, S. (2010b). *Astrophys. J.* **716**, 1208.
 Seager, S., *et al.* (2007). *Astrophys. J.* **669**, 1279.
 Selsis, F. (2007). *Lectures in Astrobiology, Advances in Astrobiology and Biogeophysics*. p. 199. Springer-Verlag, Berlin, Heidelberg, 2007.
 Snellen, I., Stuik, R., Navarro, R., *et al.* (2012). *Proc. SPIE* **8444**, 84440I.
 Snellen, I. A. G. *et al.* (2013). *Astrophys. J.* **764**, 182.
 Sotin, C., Grasset, O. & Mocquet, A. (2007). *Icarus* **191**, 337.
 Spiegel, D. S., Silverio, K. & Burrows, A. (2009). *Astrophys. J.* **699**, 1487.
 Sudarsky, D., Burrows, A. & Hubeny, I. (2003). *Astrophys. J.* **588**, 1121.

- Valencia, D., O'Connell, R. J. & Sasselov, D. D. (2006). *Icarus* **181**, 545.
- Valencia, D., Ikoma, M., Guillot, T. & Nettelmann, N. (2010). *Astron. Astrophys.* **516A**, 20.
- Valencia, D., Guillot, T., Parmentier, V. & Freedman, R. S. (2013). *Astrophys. J.* **775**, 10.
- von Braun, K. *et al.* (2011). *Astrophys. J.* **740**, 49.
- Wagner, F. W., Tosi, N., Sohl, F., Rauer, H. & Spohn, T. (2012). *Astron. Astrophys.* **541**, 103.
- Winn, J. N. *et al.* (2011). *Astrophys. J.* **737**, L18.
- Wright, J. T. *et al.* (2011). *Publ. Astron. Soc. Pacific* **123**, 412.