

# An Integrative Cognitive Model of Internalized Stigma in Psychosis

Lisa Wood\*

*North East London Foundation Trust, Goodmayes Hospital, Barley Lane, Ilford IG3 8XJ and Division of Psychology and Mental Health, University of Manchester, School of Health Sciences, Zochonis Building, Manchester M13 9PL*

Rory Byrne

*Psychosis Research Unit, Greater Manchester West NHS Foundation Trust, Rico House, Prestwich, Manchester M25 9WL*

Anthony P Morrison

*Division of Psychology and Mental Health, University of Manchester, School of Health Sciences, Zochonis Building, Manchester M13 9PL and Psychosis Research Unit, Greater Manchester West NHS Foundation Trust, Rico House, Prestwich, Manchester M25 9WL*

**Background:** Internalized stigma is a significant difficulty for those who experience psychosis, but it has never been conceptualized using cognitive theory. **Aims:** The aim of this paper is to outline a cognitive model conceptualizing internalized stigma experienced by people who also experience psychosis. **Method:** Previous literature is reviewed, critiqued and synthesized to develop the model. It draws upon previous social cognitive models of internalized stigma and integrates cognitive behavioural theory and social mentality theory. **Results:** This paper identifies key cognitive, behavioural and emotional processes that contribute to the development and maintenance of internalized stigma, whilst also recognizing the central importance of cultural context in creating negative stereotypes of psychosis. Moreover, therapeutic strategies to alleviate internalized stigma are identified. A case example is explored and a formulation and brief intervention plan was developed in order to illustrate the model in practice. **Conclusion:** An integrative cognitive model is presented, which can be used to develop individualized case formulations, which can guide cognitive behavioural interventions targeting internalized stigma in those who experience psychosis. More research is required to examine the efficacy of such interventions. In addition, it is imperative to continue to research interventions that create change in stigma at a societal level.

*Key words:* Cognitive, psychosis, internalized stigma, social mentality theory

---

\*Correspondence to Lisa Wood, North East London Foundation Trust, Goodmayes Hospital, Barley Lane, Ilford IG3 8XJ. E-mail: [lisawood3@nhs.net](mailto:lisawood3@nhs.net)

## Introduction

Stigma is experienced when ‘individuals possess (or are believed to possess) some attribute, or characteristic, that conveys a social identity that is devalued in a particular social context’ (Crocker et al., 1998). Negative public attitudes towards people who experience psychosis continue to prevail, despite widely publicized anti-stigma media campaigns such as Rethink Mental Illness’s ‘Time to Change’ initiative in the UK (Henderson and Thornicroft, 2013; Taylor Nelson Sofres British Market Research Bureau, 2014), which may be due to these campaigns addressing general mental health rather than psychosis specifically. Internalized stigma occurs when an individual becomes aware of negative stereotypes and applies them to oneself, often resulting in emotional distress (Corrigan and Watson, 2002). The internalized stigma of psychosis is associated with negative personal impacts including increased hopelessness, depression, low self-esteem and self-efficacy, reduced social networks, and reduced engagement with mental health services (Corrigan et al., 2006; Link et al., 2001; Livingston and Boyd, 2010).

Internalized stigma is a particularly prevalent issue among people with psychosis; 41.7% of a large European sample reported moderate to high levels of internalized stigma (Brohan et al., 2010a). As a consequence, the construct of internalized stigma and its theoretical underpinnings have been increasingly scrutinized. To date, it has not been conceptualized from a cognitive behavioural perspective despite internalized stigma having cognitive and behavioural consequences (Rüsch et al., 2006). The majority of theoretical models have been developed using social cognitive theory, and relate to the broader concept of ‘severe mental illness’ (SMI), and have therefore lacked specificity. There is a model of social anxiety that incorporates stigma in psychosis (Birchwood et al., 2007), but this was not specific to internalized stigma. We propose a theoretical framework that conceptualizes internalized stigma in psychosis from a cognitive behavioural perspective.

### Social cognitive theory of stigma

Link and Phelan (2001) outlined one of the original social cognitive conceptualizations of stigma. Drawing upon evolutionary theories of social and natural selection, they explain that people distinguish and label human difference. Dominant cultural beliefs connect the labelled person to undesirable characteristics, and the person is then placed in a distinct category different to us, which allows for emotional distancing and results in status loss. Due to social, economic and political power, the stigmatized individual experiences disapproval, rejection, exclusion and discrimination in society. The person develops appraisals that others will reject and devalue them, which consequently causes emotional distress and impacts on their behaviours, causing them to withdraw and avoid social situations (Link et al., 2004). Corrigan and Watson (2002) built upon this theory and distinguished between public and self-stigma. Public stigma consists of three components: stereotypes (negative beliefs about a group), prejudice (agreement with the belief and/or negative emotional reaction), and discrimination (negative behavioural response to prejudice). Self-stigma also consists of the same three components, but applied to one’s self. They further detail that appraisals of stigma can lead to low self-esteem and self-efficacy if the perceived legitimacy of public stigma is high, or righteous anger if the perceived legitimacy is low and there is high group identification.

Further refinement by Brohan et al. (2010b) focused on personal stigma and identified three distinct categories that form the construct: experienced, perceived and internalized stigma

(Brohan et al., 2010b). Experienced stigma has been defined as ‘instances of discrimination ... on the grounds of their perceived unacceptability or inferiority’ (Scrambler and Hopkins, 1986). Perceived stigma is the extent to which the stigmatized person believes that others associate them with the negative stereotypes (Link, 1987). Internalized stigma, as defined by Corrigan and Watson (2002), is the self-application of the negative stereotypes and the consequential emotional distress.

One of the main drawbacks of these models of stigma is that they lack clinical applicability and there is insufficient emphasis on the complex relationships between the components of stigma. Moreover, they have been broad and not solely focused on those who experience psychosis. This broadness has restricted the models’ specificity to include the complex interaction between stigma and pre-existing experiences of psychosis (Drapalski et al., 2013). This led to more clinically focused models being developed.

Major and O’Brien (2005), further examined by Rüsçh et al. (2009), developed a stress-coping model of stigma which identified why some individuals internalize stigma as distressing and others do not. This internalization is dependent on sensitivity to rejection, perceived legitimacy of stereotypes, experiences of discrimination, identification with labelled group and stigma appraisals, which leads to stress (Rüsçh et al., 2009). This can impact on the behavioural outcomes for the individual, for example leading to avoidance and withdrawal. Drapalski et al. (2013) and Schrank et al. (2014) proposed and tested two further models of internalized stigma, which incorporated the impacts on psychiatric symptoms. Internalized stigma was core to development and maintenance of psychiatric symptoms in both models. These models are the first clinical models of internalized stigma to include the impacts on psychiatric symptoms of psychosis. However, both models have significant limitations, being simplistic and lacking specificity regarding the psychological processes involved in the development and maintenance of internalized stigma.

Only one model has examined the role of stigma in maintaining distress in people who experience psychosis using cognitive behavioural theory (Birchwood et al., 2007); however, this was focused on understanding social anxiety in psychosis, utilizing stigma shaming beliefs as one component of the model. This model does not capture the complex emotional reactions to internalized stigma (such as depression, hopelessness, anger), or attempt to explain why only some people experience internalized stigma, and does not draw upon relevant stigma theory, e.g. Link and Phelan (2001) and Corrigan and Watson (2002). Birchwood et al. (2007) suggested that internalized cultural values of mental illness stigma lead the person to develop an other-to-self focus, i.e. worries that he/she will be judged or rejected by others. This leads to a self-focus, which results in the individual becoming hypervigilant towards how they look or perform in social situations (Clark, 2001). These collectively cause catastrophic shaming beliefs, which either result in anger, or anxiety responses. Despite limitations, the theory described by Birchwood et al. (2007) has informed the current proposed model; however, it primarily seeks to explain the development and maintenance of social anxiety in psychosis, rather than internalized stigma.

### **A cognitive model of internalized stigma in psychosis**

To date, the proposed theoretical models of stigma indicate a role for cognitive and behavioural components, which maintain internalized stigma in SMI (Corrigan and Watson, 2002; Rüsçh et al., 2009). Furthermore, these models have also suggested the role of evolutionary psychology

ideas such as loss of social status and learned helplessness (Link and Phelan, 2001). However, the psychological models described to date have not simultaneously drawn upon cognitive theory, which appears imperative to understanding internalized stigma, nor have they outlined why some people experience internalized stigma and others do not, or described a theoretical model that could inform therapeutic practice. This paper presents a model that will address these issues by integrating elements of the existing stigma models with social mentality theory (SMT; Gilbert, 2000) and a cognitive model of psychosis (Morrison, 2001) to describe a cognitive model of internalized stigma specifically for people who experience psychosis. This model is shown in Fig. 1.

### *Cultural and social context*

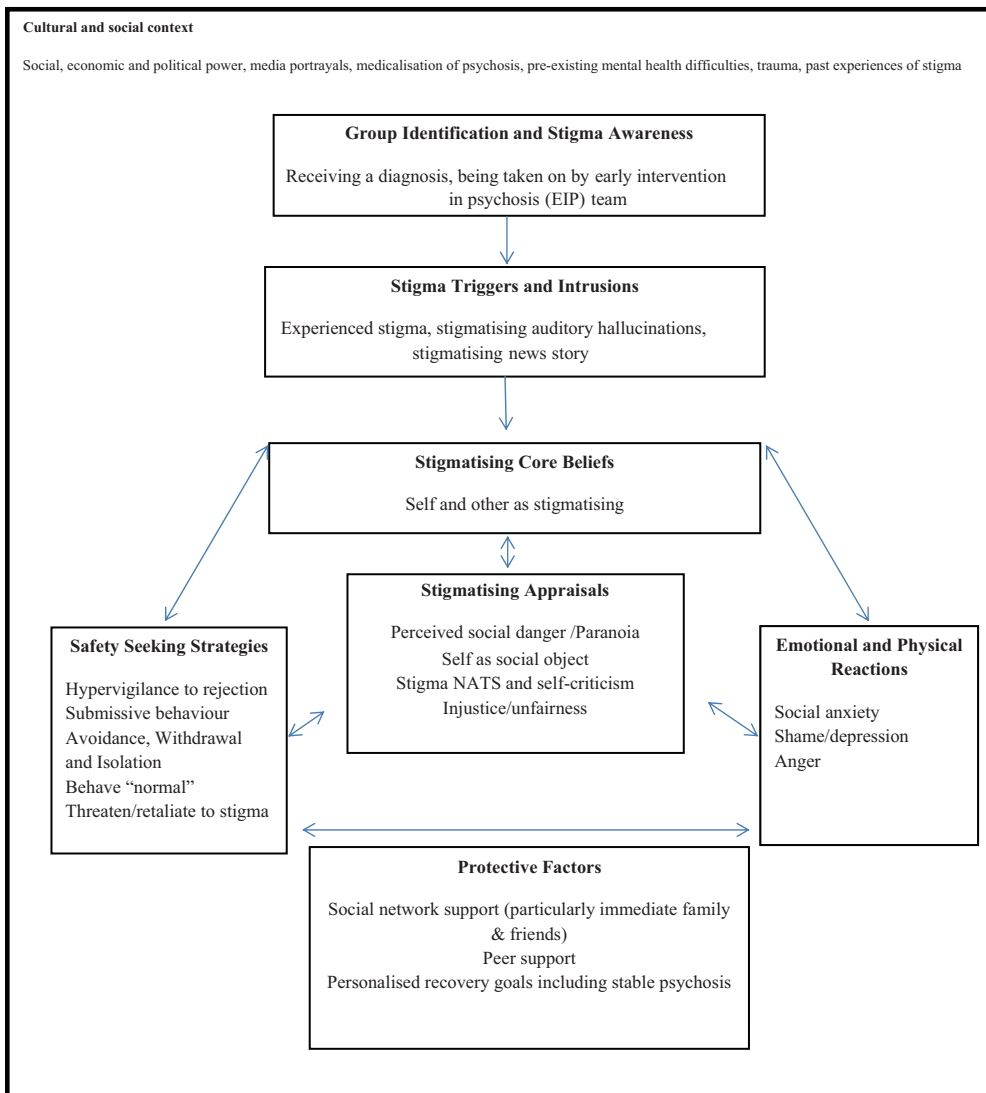
The cultural context of the stigmatized person is extremely important to consider in the development and maintenance of internalized stigma. In their conceptualization of stigma, Link and Phelan (2001) comment upon social, economic and political power in causing and maintaining stigma, and Green (2009) explains that stigma would not exist without it. Negative media portrayals and the medicalization of psychosis continue to maintain stigmatizing public attitudes towards people who experience psychosis (Read and Harre, 2001). Consequently, people with psychosis are associated with the most negative stereotypes such as dangerousness, unpredictability and an inability to recover (Crisp et al., 2005). Moreover, the medicalization of psychosis and the depiction of it as a biological mental illness has been found to perpetuate stigma by reinforcing an 'us and them' paradigm (Angermeyer et al., 2011). Read and Harre (2001) found that biological and genetic explanations of mental health difficulties were directly related to negative stereotypes (being seen as dangerousness, anti-social and unpredictable) and also with a reluctance to develop relationships. Therefore, an individual with psychosis is likely to develop an awareness of the stigma of psychosis prior to experiencing it themselves.

It is important to emphasize the importance of pre-existing trauma and mental health difficulties in the cause and maintenance of internalized stigma. It is acknowledged that increased levels of trauma worsen the severity of psychotic symptoms (Shelvin et al., 2008). It is postulated that the more severe the experiences of trauma, the more likely it is that the person will experience internalized stigma and become distressed. This is due to the likely increase of sensitivity to threatening experiences such as stigma (Gilbert, 2010). Collectively, this social context perpetuates stigma and can act as a causal and maintenance factor. It shapes the person's pre-existing conceptualizations of psychosis that influence how they interpret their own experiences.

### *Group identification and stigma awareness*

Watson et al. (2007) describe that an integral part of internalizing stigma was to (a) identify with the stigmatized group, and (b) to believe that this group identification was legitimate, which is also integral to this model. Key factors such as having insight (Hasson-Ohayon et al., 2012), pre-existing low self-esteem or shame (Corrigan et al., 2006), and pre-existing social identity (Yanos et al., 2010) have all been found to contribute to group identification and the consequential development of internalized stigma.

It has been identified that experiencing a first episode of psychosis can result in a fear of stigma, therefore it is likely that group identification can begin at this point (Franz et al.,



**Figure 1.** (Colour online) A cognitive model of internalized stigma in psychosis

2010; Iqbal et al., 2000). Furthermore, a recent service user-led study examining the impact of diagnosis found that receiving a diagnosis of psychosis or schizophrenia-spectrum disorder led to feelings of internalized stigma (Pitt et al., 2009). Participants described that once they had received a diagnosis they felt ‘labelled’, which was a cause of ‘social exclusion’ (p. 421). It is likely that an event such as receiving a psychiatric diagnosis that confirms the belongingness to the stigmatized group can trigger this process.

Stigma awareness (Watson et al., 2007), which has also been described as perceived stigma (Brohan et al., 2010b) and anticipated stigma (Gerlinger et al., 2013), occurs at this stage

and is the belief that others view people with psychosis negatively and associate them with negative stereotypes. Stigma awareness has been found to be directly related to internalized stigma, causing experiences such as withdrawal and poor self-efficacy in those who experience psychosis (Kleim et al., 2008). This relationship was also found in a large international study ( $n = 1229$ ) where internalized stigma was predicted by perceived discrimination (Brohan et al., 2010a).

Our model postulates that group identification and stigma awareness would cause people to evaluate their social roles, supported by SMT (Gilbert, 2000). SMT based within evolutionary psychology theory outlines a model to understand humans' abilities to detect threats within their social environment (Gilbert, 2010). Social mentalities coordinate our cognition, affect and behaviours in order to undertake our social roles. If we experience significant threat, our social role is devalued and shame is experienced. This is supported by stigma-relevant research; for example, Rüscher et al. (2010) found that perceived legitimacy of stigma was directly associated with automatic shame-related associations in a group of people with mental health problems.

### Stigma triggers

'Stigma triggers' are internal and external factors that can activate internalized stigma. The primary external trigger is experienced stigma. The most common experiences of stigma are verbal abuse, physical abuse, loss of contact or rejection, patronizing attitudes, disapproval and being judged (Dinos et al., 2004). Within SMT, experienced stigma would be considered a social threat that would trigger the threat system (our emotional system which reacts to threatening situations; Gilbert, 2010) in stigmatized people (Gumley and Schwannauer, 2006).

Some research has illustrated that a stigmatized person can internalize stigma without experiencing stigma if they perceive stigma to be an ongoing threat (Quinn et al., 2015). As a consequence, triggers of stigma have been noted to include witnessing a stigmatizing event or news story (Brohan et al., 2010b). The present authors would also hypothesize that neutral triggers, as identified in the psychosis model (Morrison, 2001), may also trigger internalized stigma. Similarly, neutral internal bodily sensations may also be interpreted in a catastrophic manner and trigger internalized stigma, as outlined in other cognitive models of psychosis (Morrison, 2001) and panic (Clark, 1986).

Qualitative interviews with service users have identified that auditory hallucinations and intrusive stigma-oriented thoughts or memories can act as triggers of internalized stigma (Wood et al., 2016b). Participants explained that certain auditory hallucinations had stigmatizing content, telling them that they were 'mad' and 'bad'. Furthermore, they reported experiencing intrusive thoughts, images or memories related to an incident of experienced stigma. Relatively little is known about the relationship between internal triggers and internalized stigma; the few studies available have examined stigma and psychosis more broadly. For example, Lysaker et al. (2007a) examined a small sample ( $n = 36$ ) of people with schizophrenia and found that ongoing positive symptoms significantly predicted internalized stigma (although the specific psychotic symptoms were not identified).

### *Stigmatizing core beliefs*

When the individual has (a) identified with the group and perceives stigma as legitimate and (b) experienced a stigma trigger, they will go on to activate stigma-based core beliefs. Core

beliefs are defined as fundamental, inflexible, absolute and generalized beliefs that people hold about themselves, others and the world (Beck, 1979). Extensive research has been conducted to understand the core beliefs of people who experience psychosis (Fowler et al., 2006; Smith et al., 2006). They broadly fall into two categories: beliefs of negative self-evaluation, particularly of being different (Gumley and Schwannauer, 2006), and beliefs that others are hostile, rejecting and untrustworthy (Fowler et al., 2006). Stigma-specific core beliefs have been documented as being associated with internalized stigma (Birchwood et al., 2007; Hinshaw, 2007). Most commonly, an individual can internalize the stereotypes and believe that they are dangerous, mad and unpredictable (Ritsher et al., 2003), therefore core beliefs regarding the self are likely to incorporate this content. Furthermore, stigma-related core beliefs are also going to reflect existing core beliefs related to experiences of psychosis; for example, beliefs of being different and others being hostile/rejecting are common in psychosis (Fowler et al., 2006). This is unsurprising given the high prevalence of experiences of adversity that are also commonly stigmatized, such as sexual abuse and institutional care (Varese et al., 2012).

### *Stigma appraisals*

Stigma-related appraisals are core to internalized stigma and have been described as intrusive and automatic (Rüsch et al., 2010). The stigmatized person is also likely to have a cognitive-attentional bias (Morrison, 2001), which consequentially leads them to have heightened self-focused attention, attentional bias and ruminative processes (Wells, 1995; Wells and Matthews, 1994) regarding stigma. We hypothesize that there are three subtypes of appraisals which pertain to different emotional responses. The first subtype of appraisal would relate to social anxiety and paranoia, and refer to perceived social danger (Michail and Birchwood, 2009, 2013). If socially anxious, the person would process themselves as a social object (detailed monitoring of themselves in social situations) (Birchwood et al., 2007; Clark, 2001). Secondly, stigma-specific negative automatic thoughts and self-criticism are widely documented to be associated with depression (Beck, 1979; Gilbert and Procter, 2006), and more recently have been demonstrated in people with psychosis (Shahar et al., 2004; Waite et al., 2015). Finally, cognitions pertaining to injustice and unfairness are also considered important; for example, Watson et al. (2007) report that when people perceive stigma to be unfair or unwarranted, or they feel disrespected, they will experience righteous anger and frustration.

### *Emotional and physiological consequences*

The subtypes of stigma appraisals are hypothesized to lead to three key emotional responses in relation to stigma. Firstly, it is proposed that appraisals related to social danger and processing the self as a social object will lead to social anxiety. This has been identified in a number of studies with people who experience psychosis (Lysaker et al., 2010; Markowitz, 1998). In the qualitative literature, (social) anxiety and fear have also been identified by service users as a response to stigma (Wood et al., 2015). Birchwood et al. (2007) illustrated in a sample of people experiencing first episode psychosis that social anxiety was associated with greater shame, and that their diagnosis socially marginalized them, and resulted in loss of social status.

Secondly, shame and depression are recognized as emotional responses to stigma due to a loss of social rank (Gilbert, 2010). This has also been widely documented in systematic reviews of internalized stigma (Livingston and Boyd, 2010), service user literature (Wood et al., 2016b),



and quantitative explorations through path analysis (Lysaker et al., 2007b; Vass et al., 2015; Yanos et al., 2008). Shame and depression have been illustrated to be directly predicted by different forms of stigma, but also mediate the relationship between stigma, recovery, positive symptoms of psychosis and recovery (Rüsch et al., 2009; Vass et al., 2015).

Finally, anger has been identified as a response to stigma, although there has been less exploration of its relationships with stigma compared with the other emotional responses. Anger has been described as a positive response to stigma and considered righteous and empowering (Watson et al., 2007). Anger occurs when an individual identifies with the stigmatized group but perceives the stigma to be unjust or unfair (Rüsch et al., 2005). This has also been described as important by service users who experience psychosis in qualitative interviews (Dinos et al., 2004; Wood et al., 2015).

### *Safety-seeking strategies*

Safety-seeking behaviours are utilized to prevent a feared catastrophe and are widely documented in cognitive models (Clark and Wells, 1995; Salkovskis et al., 1999). Within psychosis, safety-seeking behaviours are also prevalent and broadly pertain to avoidance and resistance (Freeman et al., 2007). Safety-seeking behaviours within internalized stigma in psychosis would serve to protect the individual from feeling stigmatized by others. One of the most significant safety behaviours for internalized stigma is the avoidance of disclosure about experiences of psychosis to all areas of their social network (e.g. friends, family, employers) (Corrigan et al., 2013). Service users have also described having to 'act normally' when they are around others by hiding their experiences of psychosis (Pyle and Morrison, 2013). Social avoidance is also an identified coping strategy for stigma by keeping a distance from others and not having relationships in order to protect against rejection. Furthermore, stigmatized people are more likely to avoid mental health services due to concerns regarding stigma (Rüsch et al., 2005).

Another potential safety-seeking behaviour is heightened awareness and threat monitoring of stigma. It is widely documented that people who experience psychosis and trauma have a heightened threat system due to actual threat experiences (Freeman et al., 2001; Morrison, 2001; Morrison et al., 2003). In particular, psychosis is underpinned by inter-relational trauma and is thought to be at the core of the development and maintenance of psychosis (Braehler et al., 2013). In a similar vein, experienced and perceived stigma are additional social threats that could increase hypervigilance and attunement to social cues regarding stigma (Birchwood et al., 2007). Additionally, another safety behaviour identified is submission within relationships. Submissive behaviour is a widely documented safety behaviour with cognitive models of depression (Gilbert and Allan, 1998). From an evolutionary perspective, submissive behaviours are a result of low social rank, i.e. seeing oneself as not good enough in comparison to others, and show themselves in the context of others who are more powerful (Gilbert and Allan, 1998). Within the context of internalized stigma, submission can be understood as protecting the individual from powerful and stigmatizing others.

Other types of safety-seeking responses include cognitive strategies which aim to manage the distressing cognitions and emotions as a response of internalized stigma. Such strategies are often described as metacognitive and include tactics such as anticipatory processing, post-event rumination, selective attention to unwanted thoughts and cognitive avoidance or suppression. Such strategies are widely noted in the psychosis literature as an attempt to manage the cognitive and emotional distress (Morrison, 2001).



### *Protective factors*

A number of protective factors are suggested by the proposed theoretical model, and have been drawn from existing evidence. Firstly, social network support has been outlined. Supportive relationships and secure attachments are important to our well-being and can protect us from social threats such as stigma (Gumley et al., 2010). This is widely documented in the stigma literature (Chronister et al., 2013), particularly from qualitative explorations of service user perspectives (Pyle and Morrison, 2013). Even when an individual has multiple experiences of stigma, the close social network of family and friends acts as a buffer (Wood et al., 2015), which has been supported by a recent mediation analysis (Chronister et al., 2013).

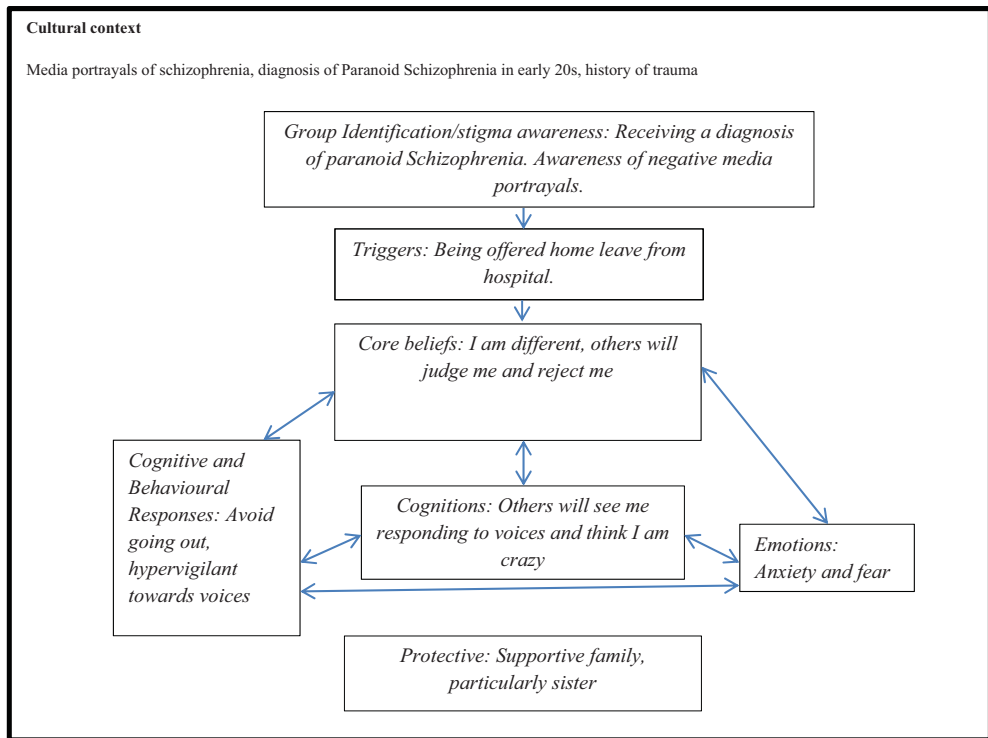
The second most commonly cited protective factor against stigma is peer support, for similar reasons as those outlined above. In addition, peer support offers understanding, normalization and empathy (Russonova et al., 2014). Peer support has been shown to improve self-identity and self-esteem, make the individual feel more valued, and ultimately reduce internalized stigma (Repper, 2013). Qualitative accounts have supported this finding; service users state they appreciate 'being around people who are the same', and that it brings 'a silent understanding' (Wood et al., 2016b). Interventions for internalized stigma that have included peer support have also shown promising results (Corrigan et al., 2013; Russonova et al., 2014).

Developing personal recovery goals has been identified as an important protective factor. The 'recovery movement' has long emphasized the importance of overcoming stigma as part of the recovery process (Allot et al., 2002; Pitt et al., 2007). In addition to overcoming stigma, qualitative research has identified that having idiosyncratic goals is important to achieve despite stigma, for example gaining employment, accessing education and developing relationships (Andreasen et al., 2003; Wood et al., 2016b). In addition, having stable experiences of psychosis has been identified as an important protective factor against stigma as experiencing overt symptoms, such as responding to auditory hallucinations, can make you a vulnerable target for experienced stigma (Rüsch et al., 2005; Wood et al., 2016b). Finally, and in relation to empowerment and righteous anger, service users have noted that that activism, such as open disclosure about personal experiences, or involvement in a service user movement such as the Hearing Voices Network (Corstens et al., 2014) and Mad Pride (Dellar et al., 2003), can be helpful in tackling both internalized and public stigma.

### *Case example*

In order to demonstrate the application of this formulation, a case example is presented with a brief treatment plan.

Mark was a 39-year-old White British, single man with a diagnosis of paranoid schizophrenia, who had a history of experiencing auditory hallucinations and paranoid beliefs since university in his early twenties. He had recently been admitted into a psychiatric inpatient ward following a relapse of his psychosis. He was in hospital for four months and nearer discharge was becoming more pre-occupied with readjusting to his life away from hospital. In particular he was concerned about experiencing stigma and discrimination in social situations. Mark enjoyed going to the local pub to watch football but was reluctant to do so as he was concerned that others would judge him and verbally abuse him when he was out. His experiences of internalized stigma have been included in a formulation outlined in Fig. 2. Mark identified with the stigmatized group and has done since he received a diagnosis



**Figure 2.** (Colour online) A formulation of Mark's experiences of internalized stigma

of paranoid schizophrenia a few years after his first episode of psychosis. Since this time, he has been concerned about stigma due to the negative media portrayals of 'schizophrenics' being 'crazy' and 'violent'. He has experienced verbal discrimination in the past as a result of responding to his voices in public, when passers-by called him 'crazy' and a 'nutjob'. The recent trigger for his current internalized stigma cycle was being offered home leave from hospital. This triggered his core beliefs of being different and that others would be judgemental and rejecting.

With regard to the maintenance cycle of Mark's stigma beliefs, his appraisal was that when going out on leave others will call him 'crazy' when he is out in public. This caused him to experience anxiety and fear in relation to the social context and activated his safety-seeking behaviours of only going out when he really needed to, masking his voices, and being hypervigilant towards them. These safety behaviours in turn maintained his cycle of internalized stigma. Mark was keen to break the cycle of internalized stigma and we set up a series of behavioural strategies in order to challenge his belief that he would be called 'crazy' when out on leave. Mark's behavioural experiments related to going out with his sister to the local pub, as he was less likely to respond to voices when in the company of others and people were less likely to notice if he did, as they would assume he was speaking to his sister. Mark became less pre-occupied with what others thought of him and he was able to go out with his

sister on a number of occasions which reduced his anxiety, and then later was able to go out on his own.

### *Clinical implications*

The outlined cognitive model of internalized stigma in psychosis is the first of its kind and has some important clinical implications in supporting service users to overcome internalized stigma. Essentially, it is imperative that future clinical interventions for psychosis target the cognitive and behavioural responses that are affected by stigma. To date, the research examining the efficacy of interventions to reduce internalized stigma has been inconsistent, with most trials not finding a significant improvement in their primary outcome (Wood et al., 2016c). In a systematic review of internalized stigma interventions, Wood et al. (2016c) concluded that the inconsistent findings were potentially due to the lack of formulation or conceptualizations of individual participants' internalized stigma difficulties. This present paper outlines a framework to support the development of idiosyncratic formulations of internalized stigma in order to inform clinical interventions. Furthermore, an idiosyncratic formulation would also facilitate personal understanding and normalization, which have been identified as important factors within internalized stigma interventions by service users (Wood et al., 2016a).

Specific recommendations for intervention include identification of the different levels of stigma cognitions (core beliefs and stigma appraisals) and identification of safety behaviours, which are both likely to be crucial in optimizing the efficacy of intervention. Techniques for modifying cognitions in relation to internalized stigma include psycho-education, normalization, behavioural experiments, reducing avoidance and generating alternative explanations of stigma beliefs that have been used in previous internalized stigma cognitive therapy trials (Morrison et al., 2016; Uchino et al., 2012). Psycho-education and normalization have been highlighted as particularly helpful in alleviating internalized stigma by service users who experience psychosis (Wood et al., 2016a). In the same study, the therapeutic relationship was highlighted as particularly important and a process that modelled a non-stigmatizing relationship. As a consequence, it is proposed that a good therapeutic relationship is important in implementing therapy for internalized stigma based on the model proposed here.

Finally, this model demonstrates the importance of the cultural context in causing and maintaining stigma, and that internalized stigma would not exist without it (Corrigan and Watson, 2002). Therefore a final implication is the continued need to develop interventions that tackle stigma at a societal level through service user activism and public education.

In conclusion, this paper has presented a theoretical model of understanding internalized stigma using cognitive theory and SMT. It is the first model developed which can be used in clinical practice to develop a formulation with a person with experience of internalized stigma related to psychosis. It provides a framework for developing an idiosyncratic formulation and structuring a cognitive therapy intervention. Further randomized controlled trials of cognitive therapy interventions for internalized stigma are required based on this theoretical model. Moreover, future studies should also test the mechanisms of action within the model, e.g. examining whether cognitive strategies such as psycho-education or normalization reduce internalized stigma through impact on stigma appraisals and core beliefs. However, we also require change in public attitudes at a societal level, since eliminating the negative stereotypes of psychosis would ensure that there are no stigmatizing attitudes to internalize.

### Acknowledgements

*Ethics statement.* The authors have abided by the Ethical Principles of Psychologists and APA code of conduct. Ethical approval was not sought for this paper as it is a theoretical paper that did not gather data from human participants.

*Conflicts of interest.* The authors have no conflicts of interest with respect to this publication.

### References

- Allot, P., Loganathan, L. and Fulford, K. W. M. (2002). Discovering hope for recovery. *Canadian Journal of Community Mental Health, 21*, 1–22.
- Andreasen, R., Oades, L. and Caputi, P. (2003). The experience of recovery from schizophrenia: towards an empirically validated stage model. *Australian and New Zealand Journal of Psychiatry, 37*, 584–594.
- Angermeyer, M. C., Holzinger, A., Carta, M. G. and Schomerus, G. (2011). Biogenetic explanations and public acceptance of mental illness: systematic review of population studies. *British Journal of Psychiatry, 199*, 367–372.
- Beck, A. (1979). *Cognitive Therapy of Depression*. New York: Guilford Press.
- Birchwood, M., Trower, P., Brunet, K., Gilbert, P., Iqbal, Z. and Jackson, C. (2007). Social anxiety and the shame of psychosis: a study in first episode psychosis. *Behaviour Research and Therapy, 45*, 1025–1037.
- Braehler, C., Gumley, A., Harper, J., Wallace, S., Norrie, J. and Gilbert, P. (2013). Exploring change processes in compassion focused therapy in psychosis: results of a feasibility randomized controlled trial. *British Journal of Clinical Psychology, 52*, 199–214.
- Brohan, E., Elgie, R., Sartorius, N. and Thornicroft, G. (2010a). Self-stigma, empowerment and perceived discrimination among people with schizophrenia in 14 European countries: the GAMIAN-Europe study. *Schizophrenia Research, 122*, 232–238.
- Brohan, E., Slade, M., Clement, S. and Thornicroft, G. (2010b). Experiences of mental illness stigma, prejudice and discrimination: a review of measures. *BMC Health Services Research, 10*, 80.
- Chronister, J., Chou, C. and Lao, H. (2013). The role of stigma coping and social support in mediating the effect of societal stigma on internalized stigma, mental health recovery, and quality of life among people with serious mental illness. *Journal of Community Psychology, 41*, 582–600.
- Clark, D. M. (1986). A cognitive approach to panic. *Behaviour Research and Therapy, 24*, 461–470.
- Clark, D. M. (2001). A cognitive perspective on social phobia. In R. Crozier and L. E. Alden (eds), *International Handbook of Social Anxiety: Concepts, Research and Interventions Relating to the Self and Shyness*. London: John Wiley and Sons Ltd.
- Clark, D. M. and Wells, A. (1995). A cognitive model of social phobia. In M. Liebowitz, D. A. Hope and F. R. Schneier (eds), *Social Phobia: Diagnosis, Assessment and Treatment*. New York: Guilford Press.
- Corrigan, P. W., Kosyluk, K. A. and Rusch, N. (2013). Reducing self-stigma by coming out proud. *American Journal of Public Health, 103*, 794–800.
- Corrigan, P. W. and Watson, A. C. (2002). The paradox of self-stigma and mental illness. *Clinical Psychology: Science and Practice, 9*, 35–53.
- Corrigan, P. W., Watson, A. C. and Barr, L. (2006). The self-stigma of mental illness: implications for self-esteem and self-efficacy. *Journal of Social and Clinical Psychology, 25*, 875–884.
- Corstens, D., Longden, E., McCarthy-Jones, S., Waddingham, R. and Thomas, R. (2014). Emerging perspectives from the Hearing Voices Movement: implications for research and practice. *Schizophrenia Bulletin, 40*, 285–294.

- Crisp, A. H., Gelder, M. G., Goddard, E. and Meltzer, H.** (2005). Stigmatization of people with mental illnesses: a follow-up study within the Changing Minds Campaign of the Royal College of Psychiatrists. *World Psychiatry*, 4, 106–113.
- Crocker, J., Major, B. and Steele, C.** (1998). Social stigma. In D. T. Gilbert and S. T. Fiske (eds), *The Handbook of Social Psychology*. Boston, MA: McGraw-Hill.
- Dellar, R., Curtis, T. and Leslie, E.** (2003). *Mad Pride: A Celebration of Mad Culture*. UK: Chipmunkpublishing.
- Dinos, S., Stevens, S., Serfaty, M., Weich, S. and King, M.** (2004). Stigma: the feelings and experiences of 46 people with mental illness. *British Journal of Psychiatry*, 184, 176–181.
- Drapalski, A. L., Lucksted, A., Perrin, P. B., Aakre, J. M., Brown, C. H., DeForge, B. R. and Boyd, J. E.** (2013). A model of internalized stigma and its effects on people with mental illness. *Psychiatric Services*, 64, 264–269.
- Fowler, D., Freeman, D., Smith, B., Kuipers, E., Bebbington, P., Bashforth, H. et al.** (2006). The Brief Core Schema Scale (BCSS): psychometric properties and associations with paranoia and grandiosity in non-clinical and psychosis samples. *Psychological Medicine*, 36, 749–759.
- Franz, L., Carter, T., Leiner, A. S., Bargner, E., Thompson, N. J. and Compton, M. T.** (2010). Stigma and treatment delay in first-episode psychosis: a grounded theory study. *Early Intervention in Psychiatry*, 4, 47–56.
- Freeman, D., Garety, P. and Kuipers, E.** (2001). Persecutory delusions: developing the understanding of belief maintenance and emotional distress. *Psychological Medicine*, 31, 1293–1306.
- Freeman, D., Garety, P. A., Kuipers, E., Fowler, D., Bebbington, P. E. and Dunn, G.** (2007). Acting on persecutory delusions: the importance of safety seeking. *Behaviour Research and Therapy*, 45, 89–99.
- Gerlinger, G., Hauser, M., De Hert, M., Lacluyse, K., Wampers, M. and Correll, C. U.** (2013). Personal stigma in schizophrenia spectrum disorders: a systematic review of prevalence rates, correlates, impact and interventions. *World Psychiatry*, 12, 155–164.
- Gilbert, P.** (2000). The relationship of shame, social anxiety and depression: the role of evaluation of social rank. *Clinical Psychology and Psychotherapy*, 7, 174–189.
- Gilbert, P.** (2010). *Compassion Focused Therapy*. Hove: Routledge.
- Gilbert, P. and Allan, S.** (1998). The role of defeat and entrapment (arrested fight) in depression: an exploration of an evolutionary view. *Psychological Medicine*, 28, 584–597.
- Gilbert, P. and Procter, S.** (2006). Compassionate mind training for people with high shame and self-criticism: overview and pilot study of a group therapy approach. *Clinical Psychology and Psychotherapy*, 13, 353–379.
- Green, G.** (2009). *The End of Stigma? Changes in the Social Experience of Long-Term Illness*. London: Routledge.
- Gumley, A., Braehler, C., Laithwaite, H. M., MacBeth, A. and Gilbert, P.** (2010). A compassion focused model of recovery after psychosis. *International Journal of Cognitive Therapy*, 3, 186–201.
- Gumley, A. and Schwannauer, M.** (2006). *Staying Well after Psychosis*. London: John Wiley and Sons.
- Hasson-Ohayon, I., Ehrlich-Ben Or, S., Vahab, K., Amiaz, R., Weiser, M. and Roe, D.** (2012). Insight into mental illness and self-stigma: the mediating role of shame proneness. *Psychiatry Research*, 30, 802–806.
- Henderson, C. and Thornicroft, G.** (2013). Evaluation of the Time to Change Programme in England 2008–2011. *British Journal of Psychiatry*, 202, 45–48.
- Hinshaw, S. P.** (2007). *The Mark of Shame: Stigma of Mental Illness and an Agenda for Change*. Oxford: Oxford University Press.
- Iqbal, Z., Birchwood, M., Chadwick, P. and Trower, P.** (2000). A cognitive approach to depression and suicidal thinking in psychosis. II: Testing the validity of a social ranking model. *British Journal of Psychiatry*, 177, 522–528.

- Kleim, B., Vauth, R., Adam, G., Stieglitz, R., Hayward, P. and Corrigan, P. W.** (2008). Perceived stigma predicts low self-efficacy and poor coping in schizophrenia. *Journal of Mental Health*, 17, 482–491.
- Link, B. and Phelan, J. C.** (2001). Conceptualizing stigma. *Annual Review of Sociology*, 27, 363–385.
- Link, B. G.** (1987). Understanding labelling effects in the area of mental disorders: an assessment of the effects of expectations of rejection. *American Sociological Review*, 52, 96–112.
- Link, B. G., Struening, E. L., Neese-Todd, S., Asmussen, S. and Phelan, J. C.** (2001). Stigma as a barrier to recovery: the consequences of stigma for the self-esteem of people with mental illness. *Psychiatric Services*, 52, 1621–1626.
- Link, B. G., Yang, L. H., Phelan, J. C. and Collins, P. Y.** (2004). Measuring mental illness stigma. *Schizophrenia Bulletin*, 30, 511–541.
- Livingston, J. D. and Boyd, J. E.** (2010). Correlates and consequences of internalized stigma for people living with mental illness: a systematic review and meta-analysis. *Social Science and Medicine*, 71, 2150–2161.
- Lysaker, P., Yanos, P., Outcalt, J. and Roe, D.** (2010). Association of stigma, self-esteem, and symptoms with concurrent and prospective assessment of social anxiety in schizophrenia. *Clinical Schizophrenia and Related Psychoses*, 4, 41–48.
- Lysaker, P. H., Davis, L. W., Warman, D. M., Strasburger, A. and Beattie, N.** (2007a). Stigma, social function and symptoms in schizophrenia and schizoaffective disorder: associations across 6 months. *Psychiatry Research*, 149, 89–95.
- Lysaker, P. H., Roe, D. and Yanos, P. T.** (2007b). Toward understanding the insight paradox: Internalized stigma moderates the association between insight and social functioning, hope, and self-esteem among people with schizophrenia spectrum disorders. *Schizophrenia Bulletin*, 33, 192–199.
- Major, B. and O'Brien, L. T.** (2005). The social psychology of stigma. *Annual Review of Psychology*, 56, 393–421.
- Markowitz, F. E.** (1998). The effects of stigma on the psychological well-being and life satisfaction of persons with mental illness. *Journal of Health and Social Behaviour*, 39, 335–347.
- Michail, M. and Birchwood, M.** (2009). Social anxiety disorder in first-episode psychosis: incidence, phenomenology and relationship with paranoia. *British Journal of Psychiatry*, 195, 234–241.
- Michail, M. and Birchwood, M.** (2013). Social anxiety disorder and shame cognitions in psychosis. *Psychological Medicine*, 43, 133–142.
- Morrison, A., Burke, E., Murphy, E., Pyle, M., Bowe, S., Varese, F. et al.** (2016). Cognitive Therapy for Internalised Stigma in People Experiencing Psychosis: a pilot randomised controlled trial. *Psychiatry Research*, 240, 96–102.
- Morrison, A. P.** (2001). The interpretation of intrusions in psychosis: An integrative cognitive approach to hallucinations and delusions. *Behavioural and Cognitive Psychotherapy*, 29, 257–276.
- Morrison, A. P., Frame, L. and Larkin, W.** (2003). Relationships between trauma and psychosis: a review and integration. *British Journal of Clinical Psychology*, 42, 331–351.
- Pitt, L., Kilbride, M., Nothard, S., Welford, M. and Morrison, A. P.** (2007). Researching recovery from psychosis: a user-led project. *Psychiatry Bulletin*, 31, 55–60.
- Pitt, L., Kilbride, M., Welford, M., Nothard, S. and Morrison, A. P.** (2009). Impact of a diagnosis of psychosis: user-led qualitative study. *Psychiatric Bulletin*, 33, 419–423.
- Pyle, M. and Morrison, A.** (2013). 'It's just a very taboo and secretive kind of thing': making sense of living with stigma and discrimination from accounts of people with psychosis. *Psychosis: Psychological, Social and Integrative Approaches*. doi: [10.1080/17522439.2013.834458](https://doi.org/10.1080/17522439.2013.834458)
- Quinn, D., Williams, M. K. and Weisz, B.** (2015). From discrimination to internalizes mental illness stigma: the mediating roles of anticipated discrimination and anticipated stigma. *Psychiatric Rehabilitation Journal*, 38, 103–108.
- Read, J. and Harre, N.** (2001). The role of biological and genetic causal beliefs in the stigmatisation of 'mental patients'. *Journal of Mental Health*, 10, 223–235.



- Repper, J.** (2013). *Peer Support Workers: Theory and Practice*. London: Centre for Mental Health.
- Ritsher, J. B., Otilingam, P. G. and Grajales, M.** (2003). Internalized stigma of mental illness: psychometric properties of a new measure. *Psychiatry Research*, *121*, 31–49.
- Rüsch, N., Angermeyer, M. C. and Corrigan, P. W.** (2005). Mental illness stigma: concepts, consequences, and initiative to reduce stigma. *European Psychiatry*, *20*, 529–539.
- Rüsch, N., Corrigan, P. W., Wassel, A., Michaels, P., Olschewski, M., Wilkniss, S. and Batia, K.** (2009). A stress-coping model of mental illness stigma: I. Predictors of cognitive stress appraisal. *Schizophrenia Research*, *110*, 59–64.
- Rüsch, N., Lieb, K., Bohus, M. and Corrigan, P. W.** (2006). Self-stigma, empowerment, and perceived legitimacy of discrimination among women with mental illness. *Psychiatric Services*, *57*, 399–402.
- Rüsch, N., Todd, A. R., Bodenhausen, G. V., Olschewski, M. and Corrigan, P. W.** (2010). Automatically activated shame reactions and perceived legitimacy of discrimination: a longitudinal study among people with mental illness. *Journal of Behavior Therapy and Experimental Psychiatry*, *41*, 60–63.
- Russinova, Z., Rogers, E. S., Gagne, C., Bloch, P., Drake, K. M. and Mueser, K. T.** (2014). A randomized controlled trial of a peer-run antistigma photovoice intervention. *Psychiatric Services*, *65*, 242–246.
- Salkovskis, P. M., Clark, D. M., Hackmann, A., Wells, A. and Gelder, M.** (1999). An experimental investigation of the role of safety-seeking behaviours in the maintenance of panic disorder with agoraphobia. *Behaviour Research and Therapy*, *37*, 559–574.
- Schrank, B., Amering, M., Hay, A. G., Weber, M. and Sibitz, I.** (2014). Insight, positive and negative symptoms, hope, depression and self-stigma: a comprehensive model of mutual influences in schizophrenia spectrum disorders. *Epidemiology and Psychiatric Sciences*, *23*, 271–279.
- Scrambler, G. and Hopkins, A.** (1986). Being epileptic: coming to terms with stigma. *Sociology of Health and Illness*, *8*, 26–43.
- Shahar, G., Trower, P., Iqbal, Z., Birchwood, M., Davidson, L. and Chadwick, P.** (2004). The person in recovery in acute and severe psychosis: the role of dependency, self-criticism, and efficacy. *American Journal of Orthopsychiatry*, *74*, 480–488.
- Shelvin, M., Houston, J. E., Dorahy, M. J. and Adamson, G.** (2008). Cumulative traumas and psychosis: an analysis of the National Comorbidity Survey and the British Psychiatric Morbidity Survey. *Schizophrenia Bulletin*, *34*, 193–199.
- Smith, B., Fowler, D., Freeman, D., Bebbington, P., Bashforth, H., Garety, P. et al.** (2006). Emotion and psychosis: links between depression, self-esteem, negative schematic beliefs and delusions and hallucinations. *Schizophrenia Research*, *86*, 181–188.
- Taylor Nelson Sofres British Market Research Bureau** (2014). *Attitudes to Mental Illness 2013 Research Report*. London: TNS.
- Tully, S., Wells, A. and Morrison, A.** (under review). An exploration of the relationship between use of safety seeking behaviours and psychosis: a systematic review and meta-analysis.
- Uchino, T., Maeda, M. and Uchimura, N.** (2012). Psychoeducation may reduce self-stigma of people with schizophrenia and schizoaffective disorder. *The Kurume Medical Journal*, *59*, 25–31.
- Varese, F., Smeets, F., Drukker, M., Lieverse, R., Lataster, T., Viechtbauer, W. et al.** (2012). Childhood adversities increase the risk of psychosis: a meta-analysis of patient-control, prospective and cross-sectional cohort studies. *Schizophrenia Bulletin*, *11*, 1–11.
- Vass, V., Morrison, A., Law, H., Dudley, J., Taylor, P., Bennett, K. M. and Bentall, R. P.** (2015). How stigma impacts on people with psychosis: the mediating effect of self-esteem and hopelessness on subjective recovery and psychotic experiences. *Psychiatry Research*. doi: [10.1016/j.psychres.2015.09.042](https://doi.org/10.1016/j.psychres.2015.09.042)
- Waite, F., Knight, M. T. and Lee, D.** (2015). Self-compassion and self-criticism in recovery in psychosis: an interpretative phenomenological analysis study. *Journal of Clinical Psychology*, *71*, 1201–1217.



- Watson, A. C., Corrigan, P. W., Larson, J. E. and Sells, M.** (2007). Self-stigma in people with mental illness. *Schizophrenia Bulletin*, 33, 1312–1318.
- Wells, A.** (1995). Meta-cognition and worry: a cognitive model of generalised anxiety disorder. *Behavioural and Cognitive Psychotherapy*, 23, 301–320.
- Wells, A. and Matthews, G.** (1994). *Attention and Emotion: A Clinical Perspective*. Hillsdale, NJ: Laurence Erlbaum Associates.
- Wood, L., Burke, E., Byrne, R. and Morrison, A.** (2016a). Examining service user experiences of a cognitive therapy intervention for self-stigma in psychosis. *Psychosis: Psychological, Social and Integrative Approaches*, 8, 238–249.
- Wood, L., Burke, E., Byrne, R., Pyle, M., Chapman, N. and Morrison, A.** (2015). Stigma in psychosis: a thematic synthesis of current qualitative evidence. *Psychosis: Psychological, Social and Integrative Approaches*, 7, 152–165.
- Wood, L., Byrne, R., Enache, G. and Morrison, A.** (2016b). Acute inpatients experiences of stigma from psychosis: a qualitative exploration. *Stigma and Health*. doi: [10.1037/sah0000063](https://doi.org/10.1037/sah0000063)
- Wood, L., Byrne, R., Varese, F. and Morrison, A.** (2016c). Psychosocial interventions for internalised stigma in psychosis: a systematic narrative synthesis and meta-analysis. *Schizophrenia Research*, 176, 291–303.
- Yanos, P., Roe, D. and Lysaker, P.** (2010). The impact of illness identity on recovery from severe mental illness. *American Journal of Psychiatric Rehabilitation*, 13(2), 73–93.
- Yanos, P., Roe, D., Markus, K. and Lysaker, P.** (2008). Pathways between internalized stigma and outcomes related to recovery in schizophrenia spectrum disorders. *Psychiatry Services*, 59, 1437–1442.