

Special Issue Review

†These authors contributed equally to this work.

Cite this article: Paranaíba LF, Pinheiro LJ, Macedo DH, Menezes-Neto A, Torrecilhas AC, Tafuri WL, Soares RP (2018). An overview on *Leishmania (Mundinia) enriettii*: biology, immunopathology, LRV and extracellular vesicles during the host–parasite interaction. *Parasitology* **145**, 1265–1273. <https://doi.org/10.1017/S0031182017001810>

Received: 4 May 2017

Revised: 7 September 2017

Accepted: 12 September 2017

First published online: 10 December 2017

Key words:

Leishmania (Mundinia) enriettii; *L. (Mundinia)* subgenus; Chemotherapy; Immunopathology; Innate immunity; Glycobiology; Extracellular vesicles; RNA virus

Author for correspondence:

Rodrigo P. Soares, E-mail: rsoares@cpqrr.fiocruz.br

An overview on *Leishmania (Mundinia) enriettii*: biology, immunopathology, LRV and extracellular vesicles during the host–parasite interaction

Larissa F. Paranaíba^{1,†}, Lucélia J. Pinheiro^{2,†}, Diego H. Macedo³, Armando Menezes-Neto³, Ana C. Torrecilhas⁴, Wagner L. Tafuri² and Rodrigo P. Soares³

¹Departamento de Parasitologia, Universidade Federal de Minas Gerais – UFMG, Av. Antônio Carlos, 6627 – Pampulha, 31270-901, Belo Horizonte, Minas Gerais, Brazil; ²Departamento de Patologia Geral, Universidade Federal de Minas Gerais – UFMG, Av Antônio Carlos, 6627 – Pampulha, 31270-901, Belo Horizonte, Minas Gerais, Brazil; ³Centro de Pesquisas René Rachou/Fundação Oswaldo Cruz – CpqRR/FIOCRUZ, Av. Augusto de Lima, 1715 – Barro Preto, 30.190-009, Belo Horizonte, Minas Gerais, Brazil and ⁴Departamento de Farmácia, Universidade Federal de São Paulo – UNIFESP, Av. São Nicolau, 210, 09913-030, Diadema, São Paulo, Brazil

Abstract

One of the *Leishmania* species known to be non-infective to humans is *Leishmania (Mundinia) enriettii* whose vertebrate host is the guinea pig *Cavia porcellus*. It is a good model for cutaneous leishmaniasis, chemotherapeutic and molecular studies. In the last years, an increased interest has emerged concerning the *L. (Mundinia)* subgenus after the finding of *Leishmania (M.) macropodum* in Australia and with the description of other new/putative species such as *L. (M.) martiniquensis* and ‘*L. (M.) siamensis*’. This review focused on histopathology, glycoconjugates and innate immunity. The presence of *Leishmania* RNA virus and shedding of extracellular vesicles by the parasite were also evaluated.

Leishmaniasis

Leishmaniasis is a disease caused by protozoans of the sub-family Leishmaniinae (Jirků *et al.* 2012; Espinosa *et al.* 2016). Those parasites are transmitted by the bite of infected female sand flies from the genus *Phlebotomus* in the Old World and *Lutzomyia* in the New World (Young and Duncan, 1994). The protozoan is able to infect rodents, marsupials, canids, hyraxes, edentates and primates (Grimaldi *et al.* 1989; Akhoundi *et al.* 2016). According to the World Health Organization, *leishmaniasis is one of the six most important neglected diseases* (de Guerra *et al.* 2007). In Brazil, most cases are due to *Leishmania braziliensis* (tegumentary leishmaniasis) and *Leishmania infantum* (visceral leishmaniasis).

Leishmania enriettii and Leishmania (Mundinia) subgenus

Among the 50 species of *Leishmania* reported, approximately 20 are infectious to humans (Akhoundi *et al.* 2016). One of the *Leishmania* species that is non-infective to humans is *Leishmania (Mundinia) enriettii* (Muniz and Medina, 1948; Machado *et al.* 1994; Lainson, 1997), whose vertebrate host is guinea pig *Cavia porcellus* (Rodentia: Cavida). The subgenus *L. (Mundinia)* has been recently established to accommodate those members formerly included within the *L. enriettii* complex (Espinosa *et al.* 2016; Paranaíba *et al.* 2017). The subgenus was inspired by Mun (Muniz) and din (Medina) to pay tribute to the researchers that reported this parasite.

No autochthonous cutaneous leishmaniasis (CL) cases were reported in Australia until 2003. However, strong evidence of *Leishmania* infecting red kangaroos (*Macropus rufus*) was provided later (Rose *et al.* 2004; Dougall *et al.* 2009, 2011). Recently, the name *Leishmania (M.) macropodum* was formally defined (Barratt *et al.* 2017) and the informal name *Leishmania ‘australiensis’* was discontinued to avoid usage of a *nomen nudum* (Australian Government, 2016). Besides the Australian isolate, other species and/or putative members of the *L. (Mundinia)* subgenus were reported in several parts of the world. Those included *Leishmania martiniquensis* in Martinica and Thailand (Boisseau-Garsaud *et al.* 2000; Desbois *et al.* 2014; Pothirat *et al.* 2014; Liautaud *et al.* 2015) and different isolates of ‘*Leishmania siamensis*’ in Thailand (Bualert *et al.* 2012; Kanjanopas *et al.* 2013; Chusri *et al.* 2014), United States of America (Reuss *et al.* 2012), Ghana (Kwakye-Nuako *et al.* 2015) and Central Europe (Muller *et al.* 2009; Lobsiger *et al.* 2010) (Fig. 1). Since ‘*L. siamensis*’ is not a taxonomically valid name, it should be used between quotation marks (Barratt *et al.* 2017; Cotton, 2017; Steverding, 2017). Based on the available literature, more studies are still needed to ascertain their current taxonomic status of those species/isolates using molecular

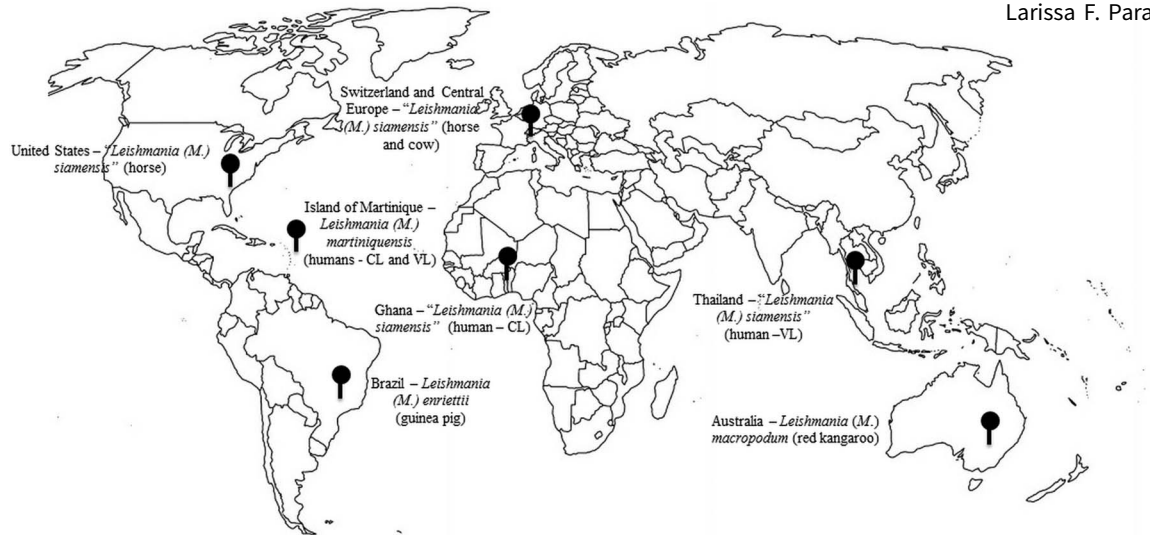


Fig. 1. Distributions and hosts of *Leishmania* species from the *L. (Mundinia)* subgenus. Legend: CL, cutaneous leishmaniasis; VL, visceral leishmaniasis.

approaches. This subject also opens the possibility of epidemiological studies in order to identify possible vectors and hosts.

Histopathology, glycoconjugates and innate immunity

The first histopathological description of *L. enriettii* lesion was reported soon after its discovery in guinea pigs. It is characterized by highly infected macrophages bearing a chronic inflammatory infiltrate, a profile very similar to other dermatropic *Leishmania* species (Medina, 2001). For this reason, *L. enriettii* has been successfully used as a CL model but it may vary depending on the host.

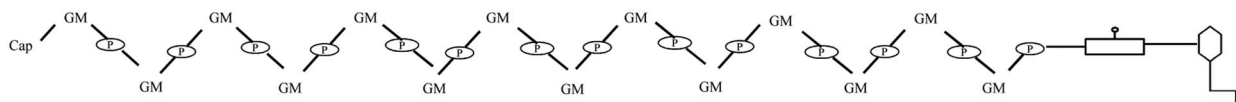
Similar to guinea pigs, hamsters may also develop and heal lesions. Nevertheless, those were not ulcerative and/or metastatic (Belehu and Turk, 1976). In red kangaroos, although a histopathological description was provided, it is still unknown if the lesions spontaneously healed in those hosts (Rose et al. 2004). Several studies of histopathological lesions caused by *L. enriettii* in guinea pigs were proposed (Paranaíba et al. 2015; Seblova et al. 2015). Depending on the strain, the lesions can appear between the third and sixth week and disappear between the 10th and the 14th week (Lobato Paraense, 1953; Bryceson et al. 1974; Medina, 2001). However, those papers did not use salivary gland extract (SGE) together with parasite inoculum to mimic natural transmission. Recently, two strains (L88 and Cobaia) of *L. enriettii* isolated in different years (1945 and 1985) exhibited different degrees of immunopathology in the guinea pigs. L88 strain was able to cause ulcerated lesions and those were

exacerbated in the presence of SGE (Paranaíba et al. 2015). However, a missing step in the histopathology of *L. enriettii* is to compare different strains in the presence/absence of SGE.

Glycoconjugates of *Leishmania* are very important during the interaction of parasite and host. Lipophosphoglycan (LPG) and glycoinositolphospholipids (GIPLs) have been demonstrated to have an important role in the interaction with sand flies and the innate immune system (Assis et al. 2012; de Assis et al. 2012; Ibraim et al. 2013). The LPGs of L88 and Cobaia strains of *L. enriettii* were devoid of side-chains in their repeat units, similar to those found in *L. braziliensis* (Soares et al. 2005), *Leishmania donovani* (Sudan) (Sacks et al. 1995), *L. infantum* type I (Coelho-Finamore et al. 2011) and *Leishmania shawi* (Passero et al. 2015) (Fig. 2). Although the LPGs of both strains were similar, their GIPLs were polymorphic (Paranaíba et al. 2015). Further studies are still necessary to define the biochemical structure for *L. enriettii* GIPLs. Different from most *Leishmania* species, LPG and GIPLs from *L. enriettii* were very pro-inflammatory triggering the production of nitric oxide (NO) and pro-inflammatory cytokines [tumour necrosis factor (TNF)- α , interleukin (IL)-6 and IL-12p40] in murine macrophages via TLR2/TLR4. Those properties varied intraspecifically where LPGs and GIPLs of L88 strain were more pro-inflammatory than those from Cobaia strain reflecting their immunopathology properties *in vivo*. L88 strain was able to cause ulcerative lesions, whereas Cobaia strain only developed a protuberance (Paranaíba et al. 2015).

In Table 1, it is possible to comparatively evaluate several innate immune components involved in LPG and GIPLs activation by

Procyclic LPG of *L. enriettii* L88 strain



Procyclic LPG of *L. enriettii* Cobaia strain

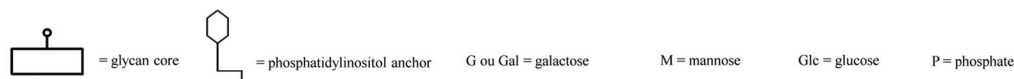
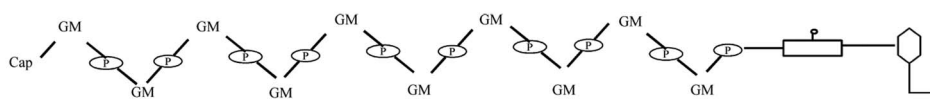


Fig. 2. Schematic diagram of lipophosphoglycan repeat units from *Leishmania enriettii* strains. The repeat units are 6-Gal(β 1,4)Man(α 1)-PO₄.

Table 1. Innate immune components involved in LPG and GIPLs activation by different *Leishmania* species

Glycoconjugates/ species/strains	TH1							TH2			Receptors			Reference			
	TNF- α	IL-1 α	IL-1 β	IL-2	IL-6	IL-12p70	IL-12p40	IFN- γ	IFN- β	NO	IL-10	IL-4	IL-5		TLR-2	TLR-4	NF-kB
LPGs																	
<i>Leishmania enriettii</i> (L88/Cobaia)	+		-		+		+			+	-			+	+	+	Paranaíba <i>et al.</i> (2015)
<i>Leishmania braziliensis</i> (M2903)	+		+	-	+		-	-		+	-	-	-	+	+	+	Ibraim <i>et al.</i> (2013)
<i>Leishmania infantum</i> (BH46)	+		+	-	+		-	-		+	-	-	-	+	+	+	Ibraim <i>et al.</i> (2013)
<i>Leishmania amazonensis</i> (PH8/Josefa)	+		-		+		-			+	-			+	+	-	Nogueira <i>et al.</i> (2016)
<i>Leishmania shawi</i> (M15789)	+						+			+	+						Passero <i>et al.</i> (2015)
<i>Leishmania major</i> (Friedlin)	+						+							+		+	de Veer <i>et al.</i> (2003)
<i>L. major</i> (ASKH)	+							+						+		+	Becker <i>et al.</i> (2003)
<i>Leishmania mexicana</i> (M379)	+	+		+			+										Aebischer <i>et al.</i> (2005)
<i>L. mexicana</i> (N.D.)	+					+	+				+					+	Argueta-Donohué <i>et al.</i> (2008)
<i>L. mexicana</i> (N.D.)	+										+	-	-	+			Villaseñor-Cardoso <i>et al.</i> (2008)
<i>Leishmania donovani</i> (N.D.)	+									-						-	Privé and Descoteaux (2000)
<i>L. donovani</i> (AG83)							+			+							Balaraman <i>et al.</i> (2005)
<i>L. amazonensis</i> (Josefa)										+	+					+	Pereira <i>et al.</i> (2010)
<i>L. amazonensis</i> (Josefa)									+					+			Vivarini <i>et al.</i> (2011)
<i>L. major</i> (LV39)										+							Proudfoot <i>et al.</i> (1995)
GIPLs																	
<i>L. enriettii</i> (L88/Cobaia)	+		-		+		+			+	-			+	+	+	Paranaíba <i>et al.</i> (2015)
<i>L. braziliensis</i> (M2903)	+		-	-			-	-		+	-	-	-	+	+		Assis <i>et al.</i> (2012)

(Continued)

Table 1. (Continued.)

Glycoconjugates/ species/strains	TH1										TH2				Receptors			Reference
	TNF- α	IL-1 α	IL-1 β	IL-2	IL-6	IL-12p70	IL-12p40	IFN- γ	IFN- β	NO	IL-10	IL-4	IL-5	TLR-2	TLR-4	NF- κ B		
<i>L. infantum</i> (PPT5)	+	-	-	-	-	-	-	-	+	-	-	-	+	+	+	-	Assis <i>et al.</i> (2012)	
<i>L. shawi</i> (M15789)	+	-	-	-	-	+	+	+	+	+	-	-	-	-	-	-	Passero <i>et al.</i> (2015)	
<i>L. major</i> (Friedlin)	-	-	-	-	-	+	+	-	-	-	-	-	+	-	-	-	de Veer <i>et al.</i> (2003)	
<i>L. major</i> (LV39)	-	-	-	-	-	+	-	-	-	-	-	-	-	-	-	-	Proudfoot <i>et al.</i> (1995)	

N.D., strain not determined.

different *Leishmania* species. The higher pro-inflammatory activity of *L. enriettii* glycoconjugates may be important not only for the severity of the lesions in guinea pigs, but also for the activation of the immune system and subsequent healing. Most of those mechanisms are still unknown probably due to the lack of studies and the low veterinary importance of those animals.

Leishmania enriettii as a model for chemotherapeutic studies and molecular biology

Guinea pigs have the ability to spontaneously cure cutaneous lesions caused by *L. enriettii*. For this reason, chemotherapeutic tests with this parasite are very scarce and only few reports were available in the literature. This scenario is completely different from that of *Leishmania amazonensis*, another dermatropic species. This anergic species, commonly associated with treatment failure and natural drug resistance, is the most used model for *in vitro* chemotherapeutic studies (Rocha *et al.* 2013).

In 1961, *L. enriettii*-infected animals treated with Glucantime[®] exhibited a lesion regression. In spite of that, no effect was observed after *in vivo* treatment with Pentostam[®], fuadin, tartar emetic and hydroxy-stilbamidine (Ercoli and Fink, 1962). Further, *in vivo* tests in *C. porcellus* and *in vitro* studies in macrophages infected with *L. enriettii* did not respond to treatment with furazolidone and nitrofurazone (Neal *et al.* 1988). On the other hand, levamisole-treated guinea pigs developed less severe lesions and metastases (Rezai *et al.* 1988). Aside from that, Glucantime[®] and Amphotericin B remain the first/second-line drugs for leishmaniasis treatment in different parts of the world. Occurrences of CL in kangaroos as an opportunistic agent (Dougall *et al.* 2011) highlights the importance of more studies in order to determine their role as hosts and perhaps to stimulate *in vivo* chemotherapeutic protocols for those and other animals.

Alike other *Leishmania* species, *L. enriettii* has been used as a model for molecular biology studies not only for developing transfection protocols but also for understanding multidrug resistance (MDR). Its LeMDR1 gene is an ABCB-type transporter having high similarity to mammalian phosphoglycan protein P and involved in vinblastine resistance (Chow *et al.* 1993). Resistance against this drug was demonstrated by many molecular approaches suggesting that accumulation inside intracellular compartments and further exocytosis was one of the mechanisms (Dodge *et al.* 2004). Later, vinblastine resistance mechanism was shown to be iron-dependent (Wong and Chow, 2006). More recently, synthetic flavonoid dimers were tested against pentamidine and sodium stibogluconate-resistant strains of *L. enriettii*. Some of those compounds, known to inhibit ATP-binding cassette transporters, were able to reverse MDR in those parasites (Wong *et al.* 2007).

Some reports have looked at differentially expressed genes in *L. enriettii* in the two stages as a means to understand parasite developmental biology. During *Leishmania* life cycle, parasite alternates from a promastigote form in the sand fly to an amastigote form in the vertebrate host. Among several morphological changes, differentially expressed proteins are also observed such as tubulin. This protein is very important for flagellum assembly, a structure absent/unapparent in the amastigotes and their genes are tandemly arranged in the genome (Landfear *et al.* 1983). Although α - and β -tubulin genes are equally arranged in both forms, their mRNA expression levels are higher in the promastigote stage (Landfear and Wirth, 1985). Besides those studies on tubulins, two publications also reported on membrane glucose transporters. Glucose is a very important carbohydrate for trypansomatids and its uptake occurs not only extracellularly, but also from the cytosol to the glycosome. They are also a family of tandem repeated genes, whose mRNAs were almost exclusively

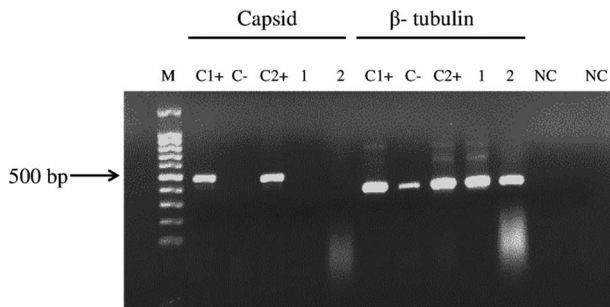


Fig. 3. LRV1/LRV2 absence in two *Leishmania enriettii* strains (L88 and Cobaia). Legend: M, molecular marker; C1+, LRV1-positive control (*Leishmania guyanensis* reference strain M4147); C-, LRV1-negative control (*Leishmania braziliensis* reference strain M2903); C2+, LRV2-positive control (*Leishmania major* reference strain ASKH); lane 1, strain L88; lane 2, strain Cobaia; NC, negative controls (capsid and β -tubulin).

expressed in the insect's promastigotes encoding for two isoforms (iso-1 and iso-2) (Stack *et al.* 1990; Langford *et al.* 1994). Later on, with the development of more advanced molecular protocols, alike other *Leishmania* species, *L. enriettii* was also used for transient and stable transfections with different genes (Laban and Wirth, 1989; Laban *et al.* 1990; Tobin *et al.* 1991). Those results were published in outstanding journals and were landmarks for standardizing those protocols in other *Leishmania*/trypanosomatid species. Although *L. enriettii* was used with the model for molecular biology studies, a lot is still to be accomplished, especially regarding virulence and target genes for parasite typing.

Leishmania enriettii: the *Leishmania* RNA virus and extracellular vesicles

The first report of viruses or virus-like particles (VLPs) uncovered in protozoans of the sub-family Leishmaniinae (Jirků *et al.* 2012; Espinosa *et al.* 2016) have been found in the promastigotes of *Leishmania hertigi* species in culture. The VLPs were immediately observed in the cytoplasm of these parasites when examined by the electronic microscope, particles were spherical with 55–60 diameter (Molyneux, 1974).

The *Leishmania* RNA virus (LRV) (Totiviridae) was reported to infect *Leishmania* species from subgenera *Viannia* (LRV1) and *Leishmania* (LRV2). LRV1 is a double-stranded RNA (dsRNA) virus first described in *Leishmania guyanensis* strains from the Amazon region (Guilbride *et al.* 1992). The molecular structure of the LRV2 virus is different from LRV1 (Scheffter *et al.* 1995). Many studies have found a correlation between LRV1 and severity of pathology, a mechanism dependent on TLR3 activation by the viral dsRNA (Ives *et al.* 2011). More recently, the finding of LRV was expanded in other Latin American countries including Bolivia, Peru and French Guiana (Adaui *et al.* 2016; Ginouvès *et al.* 2016; Macedo *et al.* 2016), confirming that biogeographically this virus seems confined to the northern regions of South America. The presence of LRV1-infected strains was already detected in a biopsy from patients with CL from Caratinga, Minas Gerais state, Brazil (Ogg *et al.* 2003). However, a presence of LRV1 in parasites isolated from patients was not detected in Minas Gerais state and other regions of Brazil, suggesting that the frequency of LRV1 in *L. braziliensis*

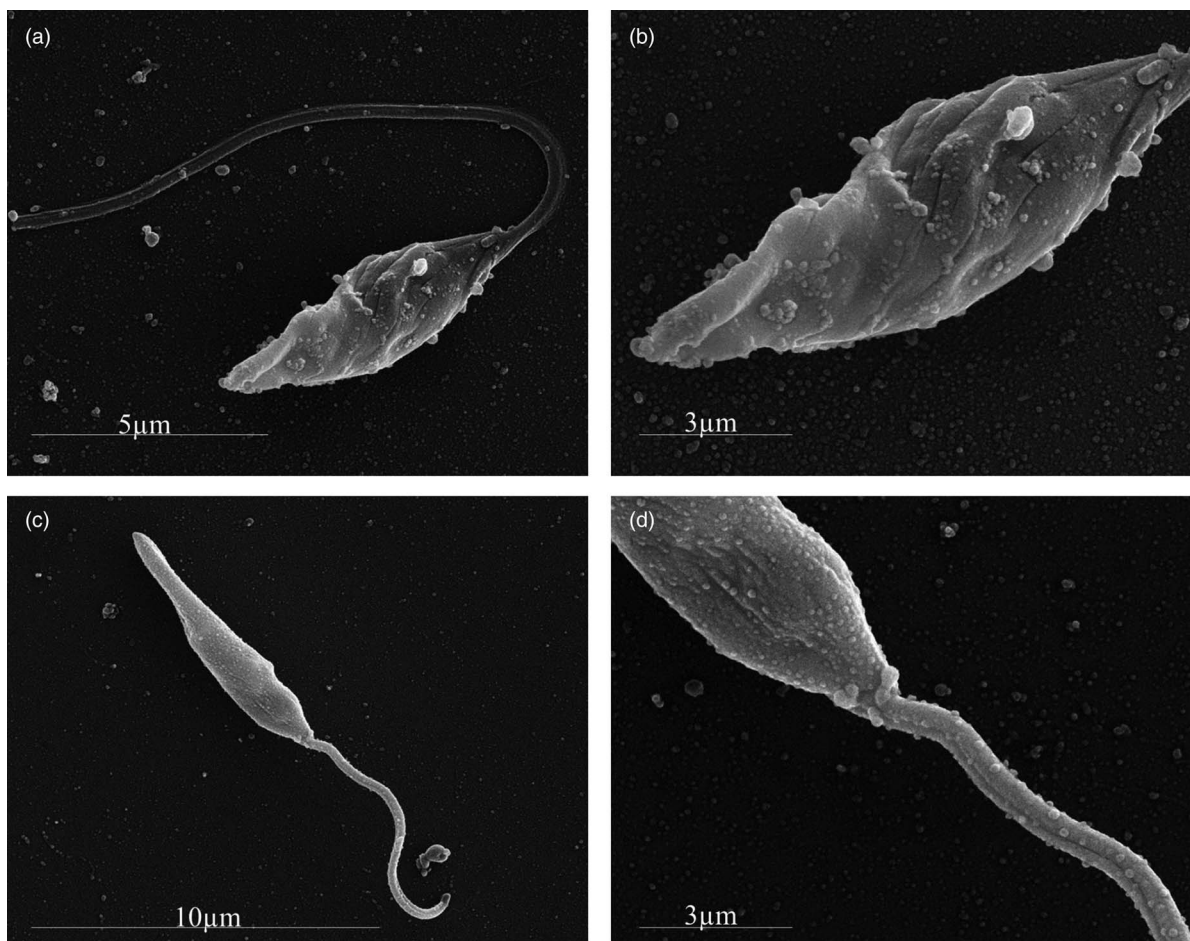


Fig. 4. Extracellular vesicles release by *Leishmania enriettii* strains (L88 and Cobaia strain). Scanning electron microscopy (SEM) of parasite membrane shedding after incubation in culture medium (a–d, bars: 3–10 μ m). (a, b) *L. enriettii* L88 strain, (c, d) *L. enriettii* Cobaia strain. Magnification: (a) 26 468; (b) 50 000; (c) 15 276 and (d) 50 000.

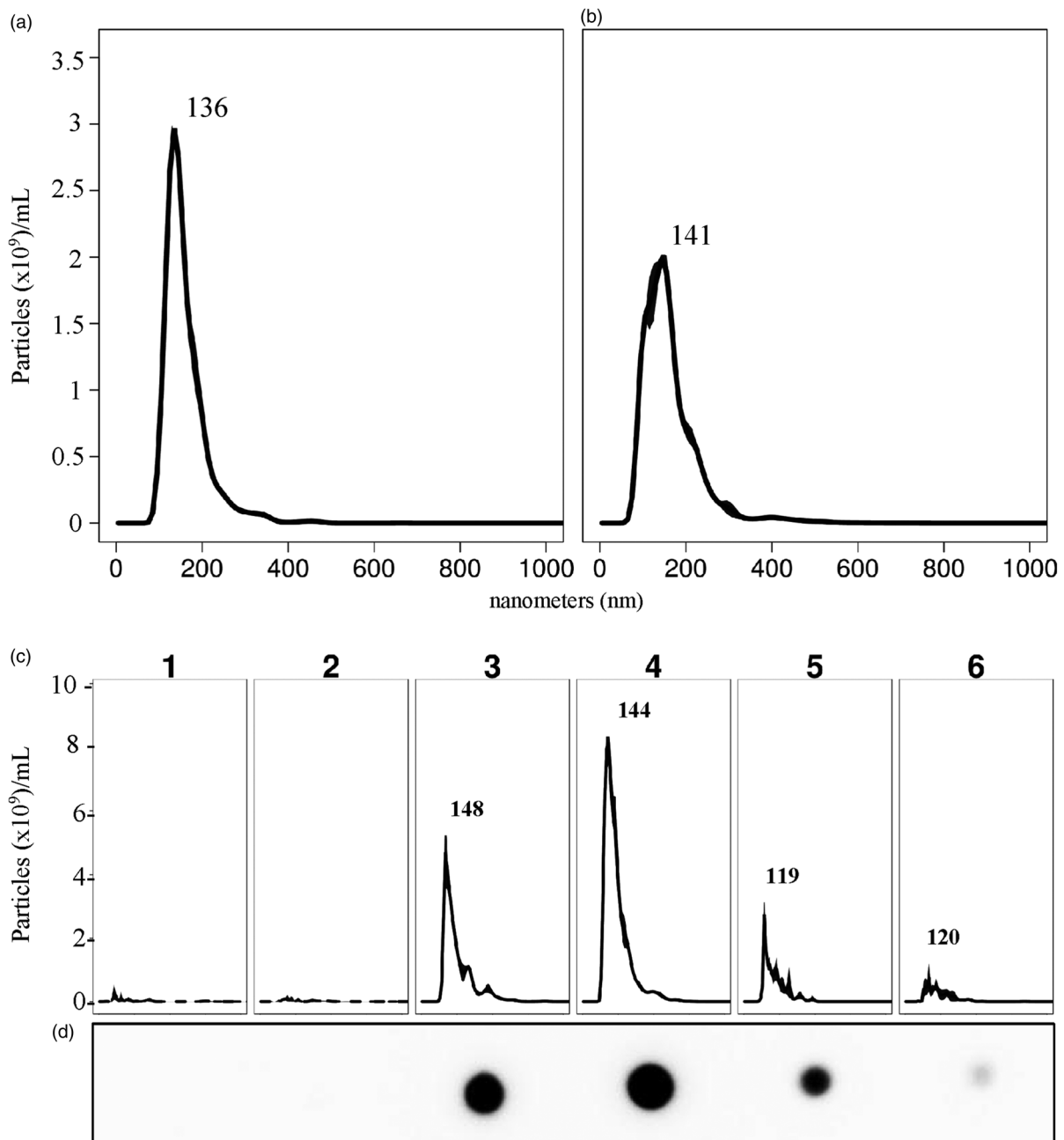


Fig. 5. Nanoparticle tracking analysis (NTA) and dot-blot from *Leishmania enriettii* strains (L88 and Cobaia). (a) NTA analysis from EVs released by L88 and (b) Cobaia strains (c); size exclusion chromatography (SEC) of EVs from Cobaia strain, and (d) gp63 detection of EV-containing fractions probed with mAb anti-gp63 (1:500).

strains seems to be very low in these localities (Pereira *et al.* 2013; Macedo *et al.* 2016). Regarding the *L. (Mundinia)* subgenus, the occurrence of LRV1/2 is a promising field for future investigations.

In this context, previous studies showed that L88 strain of *L. enriettii* caused more severe lesion than Cobaia strain (Paranaíba *et al.* 2015). However, no information on LRV1/LRV2 on *L. enriettii* was available at that time. A capsid PCR using primers for LRV1/LRV2 (Macedo *et al.* 2016) did not detect the virus in both *L. enriettii* strains (Fig. 3). Those data reinforced the role of the glycoconjugates in the severity of the pathology and perhaps are strain-specific. Those data are in accordance with previous published papers showing that LRV1 prevalence is higher in the Amazon and Northern parts of South America (Cantanhêde *et al.* 2015; Ito *et al.* 2015; Aduai *et al.* 2016; Ginouvès *et al.* 2016), whereas in the Southeast its finding is rare (Pereira *et al.* 2013; Macedo *et al.* 2016).

Another unknown aspect of the host–parasite interaction in *L. enriettii* is the release of extracellular vesicles (EVs) by the parasite. The first report on EVs in *Leishmania* was in *L. donovani* (Silverman *et al.* 2010). In this species, those vesicles abrogated immune response favouring parasite development by several mechanisms. A recent study has determined the role of EVs during the interaction between *L. infantum* and the sand fly *Lutzomyia longipalpis* (Atayde *et al.* 2015). EVs have been the focus of great interest not only in *Leishmania* but also in other pathogens [reviewed by (Marcilla *et al.* 2014; Campos *et al.* 2015; Szempruch *et al.* 2016)]. EVs have importance not only in intercellular communication but also during the host–parasite interaction not only in *Leishmania* but also in other parasites (Szempruch *et al.* 2016). For example, *Trichomonas vaginalis* EVs are determinant for tissue tropism and attachment, whereas in *Trypanosoma brucei* they confer resistance to trypanosome

lytic factors (Stephens and Hajduk, 2011; Twu *et al.* 2013). In *Trypanosoma cruzi*, EVs were determinant during the invasion, adhesion and modulation of the immune system (Trocoli Torrecilhas *et al.* 2009; Torrecilhas *et al.* 2012; Nogueira *et al.* 2015). However, it is still unknown if these subcellular structures were present in *L. enriettii* strains. The basic vesiculation protocol was performed and both strains (L88 and Cobaia) shed vesicles, as demonstrated by scanning electron microscope (SEM) analysis (Fig. 4). Nanoparticle tracking analysis (NTA) quantitatively confirmed SEM studies (Fig. 5a and b). The EVs released by L88 and Cobaia strains had similar size distributions with modal sizes of 136 (± 1.5) nm and 141 (± 5.4) nm, respectively. After normalization by cultured parasite concentrations, a slightly higher amount of EVs was observed for the Cobaia strain. EVs from the Cobaia strain were isolated by size exclusion chromatography and fractions were analysed by NTA and dot-blot for the detection of gp63 (Fig. 5c and d). The gp63 glycoprotein is a virulence factor found in *Leishmania*-derived EVs resulting in some of their immunomodulatory properties (Hassani *et al.* 2014). Therefore, the detection of gp63 in the same fractions in which particles were detected by NTA, not only corroborates their vesicular nature but also suggests that *L. enriettii* EVs are likely to be involved in the immunomodulation of host cells. However, more studies are necessary to qualitatively compare the EVs contents, not only their surface antigens, but also their miRNA cargo. Those features could help to understand the differences in the immunopathology of both strains.

Concluding remarks

Many aspects of *L. enriettii* and the other newly members of the *L. (Mundinia)* subgenus are still unknown. This comprehensive review aimed to explore and update most of the knowledge of those protozoans. Regarding *L. martiniquensis* and '*L. siamensis*', many studies are still needed to address their current taxonomical status and to determine many epidemiological aspects, such as vertebrate and invertebrate hosts. In the case of *L. enriettii* from Brazil, there is still a lack of information on the wild reservoir and confirmation of the sand fly vector. Finally, we preliminarily demonstrated the release of EVs by *L. enriettii* and demonstrate the absence of LRV1 and LRV2 in those strains. Those data reinforce the need for more studies in order to understand the complexity of factors involved in the immunopathology of this species in the host–parasite interface.

Acknowledgements. Authors are from the Universidade Federal de Minas Gerais (UFMG), Universidade Federal de São Paulo (UNIFESP) and Centro de Pesquisas René Rachou/FIOCRUZ. They are responsible for all technological and scientific support for the development of this work.

Financial support. R.P.S. and W.L.T. are supported by Conselho Nacional de Pesquisa e Desenvolvimento (CNPq), and Fundação de Amparo a Pesquisa do Estado de Minas Gerais (305065/2016-5; APQ01378-12; PPM-00102-16). L.J.P. is supported by Coordenação de Aperfeiçoamento de Pessoal de Nível Superior (CAPES). L.F.P. is supported by FAPEMIG. A.C.T. is supported by Fundação de Amparo a Pesquisa do Estado de São Paulo (FAPESP 2016-01917-3).

References

Adaui V, Lye L, Akopyants N, Zimic M, Llanos-Cuentas A, Garcia L, Maes I, De Doncker S, Dobson D, Arevalo J, Dujardin J and Beverley S (2016) Association of the endobiont double-stranded RNA virus LRV1 With treatment failure for human leishmaniasis caused by *Leishmania braziliensis* in Peru and Bolivia. *The Journal of Infectious Diseases* **213**, 112–121.

Aebischer T, Bennett CL, Pelizzola M, Vizzardelli C, Pavelka N, Urbano M, Capozzoli M, Luchini A, Ilg T, Granucci F, Blackburn CC, Ricciardi-castagnoli P and *Leishmania* Á (2005) A critical role for

lipophosphoglycan in proinflammatory responses of dendritic cells to *Leishmania mexicana*. *European Journal of Immunology* **35**, 476–486.

Akhoundi M, Kuhls K, Cannet A, Votýpka J and Marty P (2016) A historical overview of the classification, evolution, and dispersion of *Leishmania* parasites and sandflies. *PLoS Neglected Tropical Diseases* **10**, 1–40.

Argueta-donohué J, Carrillo N, Valdés-Reyes L, Zentella A, Aguirre-García M, Becker I and Gutiérrez-kobeh L (2008) *Leishmania mexicana*: participation of NF-kappaB in the differential production of IL-12 in dendritic cells and monocytes induced by lipophosphoglycan (LPG). *Experimental Parasitology* **120**, 1–9.

Assis RR, Ibraim IC, Noronha FS, Turco SJ and Soares RP (2012) Glycoinositolphospholipids from *Leishmania braziliensis* and *L. infantum*: modulation of innate immune system and variations in carbohydrate structure. *PLoS Neglected Tropical Diseases* **6**, e1543.

Atayde VD, Suau HA, Townsend S, Hassani K, Kamhawi S and Olivier M (2015) Exosome secretion by the parasitic protozoan *Leishmania* within the sand fly midgut. *HHS Public Access* **13**, 957–967.

Australian Government (2016) Spence S. Primefact: Leishmaniasis. In *Industries, DoP*, editor. 1st edn. Sidney, Australia, pp. 1–3. Available at <http://www.dpi.nsw.gov.au/content/biosecurity/animal/humans/leishmaniasis>

Balaraman S, Singh VK, Tewary P and Madhubala R (2005) *Leishmania* lipophosphoglycan activates the transcription factor activating protein 1 in J774A.1 macrophages through the extracellular signal-related kinase (ERK) and p38 mitogen-activated protein kinase. *Molecular and Biochemical Parasitology* **139**, 117–127.

Barratt J, Kaufer A, Peters B, Craig D, Lawrence A, Roberts T and Ellis J (2017) Isolation of novel trypanosomatid, *Zelonia australiensis* sp. nov. (Kinetoplastida: Trypanosomatidae) provides support for a Gondwanan origin of dixenous parasitism in the Leishmaniinae. *PLoS Neglected Tropical Diseases* **11**, 1–26.

Becker I, Salaiza N, Aguirre M, Delgado J, Carrillo-Carrasco N, Kobeh LG, Ruiz A, Cervantes R, Torres AP, Cabrera N, González A, Maldonado C and Isibasi A (2003) *Leishmania* lipophosphoglycan (LPG) activates NK cells through toll-like receptor-2. *Molecular and Biochemical Parasitology* **130**, 65–74.

Belehu A and Turk JL (1976) Establishment of cutaneous *Leishmania enriettii* infection in hamsters. *Infection and Immunity* **13**, 1235–1241.

Boisseau-Garsaud AM, Cales-Quist D, Desbois N, Jouannelle J, Jouannelle A, Pralong F and Dedet JP (2000) A new case of cutaneous infection by a presumed monoxenous trypanosomatid in the island of Martinique (French West Indies). *Transactions of the Royal Society of Tropical Medicine and Hygiene* **94**, 51–52.

Bryceson AD, Bray RS and Dumonde DC (1974) Experimental cutaneous leishmaniasis. IV. Selective suppression of cell-mediated immunity during the response of Guinea-pigs to infection with *Leishmania enriettii*. *Clinical Experimental Immunology* **16**, 189–202.

Bualert L, Charungkiattikul W, Thongsuksai P, Mungthin M, Siripattanapong S, Khositnithikul R and Leelayoova S (2012) Case report: autochthonous disseminated dermal and visceral leishmaniasis in an AIDS patient, Southern Thailand, caused by *Leishmania siamensis*. *American Journal of Tropical Medicine and Hygiene* **86**, 821–824.

Campos JH, Soares RP, Ribeiro K, Andrade AC, Batista WL and Torrecilhas AC (2015) Extracellular vesicles: role in inflammatory responses and potential uses in vaccination in cancer and infectious diseases. *Journal of Immunology Research* **2015**, 1–14.

Cantanhêde L, da Silva Júnior C, Ito M, Felipin K, Nicolette R, Salcedo J, Porrozi R, Cupolillo E and de Ferreira RG (2015) Further evidence of an association between the presence of *Leishmania* RNA virus 1 and the mucosal manifestations in tegumentary leishmaniasis patients. *PLoS Neglected Tropical Diseases* **15**, 1–11.

Chow LM, Wong AK, Ullman B and Wirth DF (1993) Cloning and functional analysis of an extrachromosomally amplified multidrug resistance-like gene in *Leishmania enriettii*. *Molecular and Biochemical Parasitology* **60**, 195–208.

Chusri S, Thammapalo S, Silpajajakul K and Siriyasatien P (2014) Animal reservoirs and potential vectors of *Leishmania siamensis* in southern Thailand. *The Southeast Asian Journal of Tropical Medicine and Public Health* **45**, 13–19.

Coelho-Finamore JM, Freitas VC, Assis RR, Melo MN, Novozhilova N, Secundino NE, Pimenta PF, Turco SJ and Soares RP (2011) *Leishmania infantum*: lipophosphoglycan intraspecific variation and interaction with vertebrate and invertebrate hosts. *International Journal for Parasitology* **41**, 333–342.

- Cotton JA (2017) The expanding world of human leishmaniasis. *Trends in Parasitology* **33**, 341–344.
- de Assis RR, Ibraim IC, Nogueira PM, Soares RP and Turco SJ (2012) Glycoconjugates in New world species of *Leishmania*: polymorphisms in lipophosphoglycan and glycoinositolphospholipids and interaction with hosts. *Biochimica et Biophysica Acta* **1820**, 1354–1365.
- de Guerra JAO, das Barbosa MGV, de Loureiro ACSP, Coelho CP, Rosa GG and de Coelho LIACR (2007) Leishmaniose tegumentar americana em crianças: aspectos epidemiológicos de casos atendidos em Manaus, Amazonas, Brasil. *Cadernos de Saúde Pública* **23**, 2215–2223.
- de Veer MJ, Curtis JM, Baldwin TM, DiDonato JA, Sexton A, McConville MJ, Handman E and Schofield L (2003) Myd88 is essential for clearance of *Leishmania major*: possible role for lipophosphoglycan and toll-like receptor 2 signaling. *European Journal of Immunology* **33**, 2822–2831.
- Desbois N, Pratloug F, Quist D and Dedet J-P (2014) *Leishmania (Leishmania) martiniquensis* n. sp. (Kinetoplastida: Trypanosomatidae), description of the parasite responsible for cutaneous leishmaniasis in Martinique Island (French West Indies). *Parasite* **21**, 1–4.
- Dodge MA, Waller RF, Chow LMC, Zaman MM, Cotton LM, McConville MJ and Wirth DF (2004) Localization and activity of multidrug resistance protein 1 in the secretory pathway of *Leishmania* parasites. *Molecular Microbiology* **51**, 1563–1575.
- Dougall A, Shilton C, Low Choy J, Alexander B and Walton S (2009) New reports of Australian cutaneous leishmaniasis in Northern Australian macropods. *Epidemiology and Infection* **137**, 1516–1520.
- Dougall AM, Alexander B, Holt DC, Harris T, Sultan AH, Bates PA, Rose K and Walton SF (2011) Evidence incriminating midges (Diptera: Ceratopogonidae) as potential vectors of *Leishmania* in Australia. *International Journal for Parasitology* **41**, 571–579.
- Ercoli N and Fink R (1962) Chemotherapy of experimental *Leishmania enriettii* infection. *Experimental Biology and Medicine* **27231**, 445–448.
- Espinosa OA, Serrano MG, Camargo EP, Teixeira MMG and Shaw JJ (2016) An appraisal of the taxonomy and nomenclature of trypanosomatids presently classified as *Leishmania* and *Endotrypanum*. *Parasitology* **15**, 1–13.
- Ginouvés M, Simon S, Bourreau E, Lacoste V, Ronet C, Couppié P and Nacher M (2016) Prevalence and distribution of *Leishmania* RNA virus 1 in *Leishmania* parasites from French Guiana. *The American Journal of Tropical Medicine and Hygiene* **94**, 102–106.
- Grimaldi G, Tesh RB and McMahon-Pratt D (1989) A review of the geographic distribution and epidemiology of leishmaniasis in the New World. *The American Journal of Tropical Medicine and Hygiene* **41**, 687–725.
- Guilbride L, Myler PJ and Stuart KD (1992) Distribution and sequence divergence of LRV1 viruses among different *Leishmania* species. *Molecular and Biochemical Parasitology* **54**, 101–104.
- Hassani K, Shio MT, Martel C, Faubert D and Olivier M (2014) Absence of metalloprotease GP63 alters the protein content of *Leishmania* exosomes. *PLoS ONE* **9**, 1–14.
- Ibraim IC, de Assis RR, Pessoa NL, Campos MA, Melo MN, Turco SJ and Soares RP (2013) Two biochemically distinct lipophosphoglycans from *Leishmania braziliensis* and *Leishmania infantum* trigger different innate immune responses in murine macrophages. *Parasites & Vectors* **6**, 1–11.
- Ito M, Catanhêde L, Katsuragawa T, Silva Junior C, Camargo L, de Mattos RG and Vilallobos-Salcedo J (2015) Correlation between presence of *Leishmania* RNA virus 1 and clinical characteristics of nasal mucosal. *Brazilian Journal of Otorhinolaryngology* **81**, 533–540.
- Ives A, Ronet C, Prevel F, Ruzzante G, Fuertes-Marraco S, Schutz F, Zangger H, Revaz-Breton M, Lye L-F, Hickerson SM, Beverley SM, Acha-Orbea H, Launois P, Fasel N and Masina S (2011) *Leishmania* RNA virus controls the severity of mucocutaneous leishmaniasis. *Science* **331**, 775–778.
- Jirků M, Yurchenko VY, Lukeš J and Maslov DA (2012) New species of insect trypanosomatids from Costa Rica and the proposal for a new subfamily within the Trypanosomatidae. *The Journal of Eukaryotic Microbiology* **59**, 537–547.
- Kanjanopas K, Siripattanapipong S, Ninsaeng U, Hitakarun A, Jitkaew S, Kaewtaphaya P and Leelayoova S (2013) *Sergentomyia (Neophlebotomus) gemmea*, a potential vector of *Leishmania siamensis* in southern Thailand. *BMC Infectious Diseases* **13**, 1–4.
- Kwakye-Nuako G, Mosore MT, Duplessis C, Bates MD, Puplampu N, Mensah-Attipoe I and Bates PA (2015) First isolation of a new species of *Leishmania* responsible for human cutaneous leishmaniasis in Ghana and classification in the *Leishmania enriettii* complex. *International Journal for Parasitology* **45**, 679–684.
- Laban A and Wirth DF (1989) Transfection of *Leishmania enriettii* and expression of chloramphenicol acetyltransferase gene. *Proceedings of the National Academy of Sciences of the USA* **86**, 9119–9123.
- Laban A, Tobin J, Curotto de Lafaille M and Wirth D (1990) Stable expression of the bacterial neor gene in *Leishmania enriettii*. *Nature* **343**, 572–574.
- Lainson R (1997) On *Leishmania enriettii* and other enigmatic *Leishmania* species of the neotropics. *Memórias do Instituto Oswaldo Cruz* **92**, 377–387.
- Landfear SM and Wirth DF (1985) Structure of mRNA encoded by tubulin genes in *Leishmania enriettii*. *Molecular and Biochemical Parasitology* **15**, 61–82.
- Landfear SM, McMahon-Pratt D and Wirth DF (1983) Tandem arrangement of tubulin genes in the protozoan parasite *Leishmania enriettii*. *Molecular and Cellular Biology* **3**, 1070–1076.
- Langford CK, Little BM, Kavanaugh MP and Landfear SM (1994) Functional expression of two glucose transporter isoforms from the parasitic protozoan *Leishmania enriettii*. *Journal of Biological Chemistry* **269**, 17939–17943.
- Liautaud B, Vignier N, Miossec C, Plumelle Y, Kone M, Delta D, Ravel C, Cabié A and Desbois N (2015) First case of visceral leishmaniasis caused by *Leishmania martiniquensis*. *American Journal of Tropical Medicine and Hygiene* **92**, 317–319.
- Lobato Paraense W (1953) The spread of *Leishmania enriettii* through the body of the guinea pig. *Transactions of the Royal Society of Tropical Medicine and Hygiene* **47**, 556–560.
- Lobsiger L, Muller N, Schweizer T, Frey CF, Wiederkehr D, Zumkehr B and Gottstein B (2010) An autochthonous case of cutaneous bovine leishmaniasis in Switzerland. *Veterinary Parasitology* **169**, 408–414.
- Macedo DH, Menezes-Neto A, Rugani JM, Silva SO, Melo MN, Lye L, Beverley SM, Gontijo CM and Soares RP (2016) Typical and atypical lesions in the State of Minas Gerais, Brazil. *Molecular & Biochemical Parasitology* **210**, 50–54.
- Machado MI, Milder RV, Pacheco RS, Silva M, Braga RR and Lainson R (1994) Naturally acquired infections with *Leishmania enriettii* Muniz and Medina 1948 in guinea-pigs from São Paulo, Brazil. *Parasitology* **109**, 135–138.
- Marcilla A, Martin-Jaular L, Treliş M, De Menezes-neto A, Osuna A, Bernal D, Fernandez-becerra C, Almeida IC and Portillo HA (2014) Extracellular vesicles in parasitic diseases. *Journal of Extracellular Vesicles* **1**, 1–15.
- Medina H (2001) Estudos sobre leishmaniose: I. Primeiros casos de Leishmaniose Espontânea observados em cobaias. *Brazilian Archives of Biology and Technology* **1**, 13–55.
- Molyneux DH (1974) Virus-like particles in *Leishmania* parasites. *Nature* **249**, 588–589.
- Muller N, Welle M, Lobsiger L, Stoffel MH, Boghenbor KK, Hilbe M and Von Bomhard W (2009) Occurrence of *Leishmania* sp. in cutaneous lesions of horses in Central Europe. *Veterinary Parasitology* **166**, 346–351.
- Muniz J and Medina H (1948) Cutaneous leishmaniasis of the guinea pig. *Leishmania enriettii* n. sp. *Hospital Rio de Janeiro, Brazil*, **33**, 7–25.
- Neal RA, van Bueren J and Hooper G (1988) The activity of nitrofurazone and furazolidone against *Leishmania donovani*, *L. major* and *L. enriettii* in vitro and in vivo. *Annals of Tropical Medicine and Parasitology* **82**, 453–456.
- Nogueira PM, Ribeiro K, Silveira ACO, Campos JH, Martins-Filho OA, Bela SR, Campos MA, Pessoa NL, Colli W, Alves MJM, Soares RP and Torrecilhas AC (2015) Vesicles from different *Trypanosoma cruzi* strains trigger differential innate and chronic immune responses. *Journal of Extracellular Vesicles* **4**, 1–16.
- Nogueira PM, Assis RR, Torrecilhas AC, Saraiva EM, Pessoa NL, Campos MA, Marialva EF, Ríos-Velasquez CM, Pessoa FA, Secundino NF, Rugani JN, Nieves E, Turco SJ, Melo MN and Soares RP (2016) Lipophosphoglycans from *Leishmania amazonensis* strains display immunomodulatory properties via TLR4 and do not affect sand fly infection. *PLoS Neglected Tropical Diseases* **10**, 1–17.
- Ogg MM, Carrion R, de Botelho ACC, Mayrink W, Correa-Oliveira R and Patterson JL (2003) Short report: quantification of *Leishmania* virus RNA in clinical samples and its possible role in pathogenesis. *The American Journal of Tropical Medicine and Hygiene* **69**, 309–313.
- Paranaíba LF, de Assis RR, Nogueira PM, Torrecilhas AC, Campos JH, de Silveira ACO, Martins-Filho OA, Pessoa NL, Campos MA, Parreiras PM,

- Melo MN, de Gontijo NF and Soares RPP (2015) *Leishmania enriettii*: biochemical characterisation of lipophosphoglycans (LPGs) and glycoinositolphospholipids (GIPLs) and infectivity to *Cavia porcellus*. *Parasites & Vectors* **8**, 1–14.
- Paranaíba LF, Pinheiro LJ, Torrecilhas AC, Macedo DH, Menezes-Neto A, Tafuri WL and Soares RP (2017) *Leishmania enriettii*, Muniz & Medina, 1948 a highly diverse parasite is here to stay. *PLoS Pathogens* **13**, 1–5.
- Passero LFD, Assis RR, da Silva TNF, Nogueira PM, Macedo DH, Pessoa NL, Campos MA, Laurenti MD and Soares RP (2015) Differential modulation of macrophage response elicited by glycoinositolphospholipids and lipophosphoglycan from *Leishmania (Viannia) shawi*. *Parasitology International* **64**, 32–35.
- Pereira LDOR, Maretti-Mira AC, Rodrigues KM, Lima RB, de Oliveira-neto MP, Cupolillo E, Pirmez C and de Oliveira MP (2013) Severity of tegumentary leishmaniasis is not exclusively associated with *Leishmania* RNA virus 1 infection in Brazil. *Memórias do Instituto Oswaldo Cruz* **108**, 665–667.
- Pereira RMS, Luiza K, Teixeira D, Barreto-de-souza V, Calegari-Silva TC, De-Melo LDB, Soares DC, Bou-habib DC, Silva M and Saraiva EM (2010) Novel role for the double-stranded RNA-activated protein kinase PKR: modulation of macrophage infection by the protozoan parasite *Leishmania*. *FASEB Journal* **24**, 617–626.
- Pothirat T, Tantiworawit A, Chaiwarith R, Jariyapan N, Wannasan A, Siritasien P and Bates PA (2014) First isolation of *Leishmania* from Northern Thailand: case report, identification as *Leishmania martiniquensis* and phylogenetic position within the *Leishmania enriettii* complex. *PLoS Neglected Tropical Diseases* **8**, 1–8.
- Privé C and Descoteaux A (2000) A *Leishmania donovani* promastigotes evade the activation of mitogen-activated protein kinases p38, c-Jun N-terminal kinase, and extracellular signal-regulated kinase-1/2 during infection of naive macrophages. *European Journal of Immunology* **30**, 2235–2244.
- Proudfoot L, Donnell CAO and Liew F (1995) Glycoinositolphospholipids of *Leishmania major* inhibit nitric oxide synthesis and reduce leishmanicidal activity in murine macrophages. *European Journal of Immunology* **25**, 745–750.
- Reuss SM, Dunbar MD, Calderwood Mays MB, Owen JL, Mallicote MF, Archer LL and Wellehan JFX (2012) Autochthonous *Leishmania siamensis* in horse, Florida, USA. *Emerging Infectious Diseases* **18**, 1545–1547.
- Rezai HR, Behbehani AB, Gettner S and Ardehali S (1988) Effect of levamisole on the course of experimental leishmaniasis in guinea-pigs and mice: haematological and immunological findings. *Annals of Tropical Medicine and Parasitology* **82**, 243–249.
- Rocha MN, Corrêa CM, Melo MN, Beverley SM, Martins-Filho OA, Madureira AP and Soares RP (2013) An alternative in vitro drug screening test using *Leishmania amazonensis* transfected with red fluorescent protein. *Diagnostic Microbiology and Infectious Disease* **75**, 282–291.
- Rose K, Curtis J, Baldwin T, Mathis A, Kumar B, Sakthianandeswaren A, Spurck T, Low Choy J and Handman E (2004) Cutaneous leishmaniasis in red kangaroos: isolation and characterisation of the causative organisms. *International Journal for Parasitology* **34**, 655–664.
- Sacks DL, Pimenta PF, McConville MJ, Schneider P and Turco SJ (1995) Stage-specific binding of *Leishmania donovani* to the sand fly vector midgut is regulated by conformational changes in the abundant surface lipophosphoglycan. *The Journal of Experimental Medicine* **181**, 685–697.
- Scheffter SM, Ro YT, Chung IK and Patterson JL (1995) The complete sequence of *Leishmania* RNA virus LRV2-1, a virus of an Old World parasite strain. *Virology* **212**, 84–90.
- Seblova V, Sadlova J, Vojtkova B, Votykka J, Carpenter S, Bates PA and Volf P (2015) The biting midge *Culicoides sonorensis* (Diptera: Ceratopogonidae) is capable of developing late stage infections of *Leishmania enriettii*. *PLoS Neglected Tropical Diseases* **9**, 1–15.
- Silverman JM, Clos J, Horakova E, Wang AY, Wiesgigl M, Kelly I and Reiner NE (2010) *Leishmania* exosomes modulate innate and adaptive immune responses through effects on monocytes and dendritic cells. *The Journal of Immunology* **185**, 5011–5022.
- Soares RPP, Cardoso TL, Barron T, Araújo MSS, Pimenta PFP and Turco SJ (2005) *Leishmania braziliensis*: a novel mechanism in the lipophosphoglycan regulation during metacyclogenesis. *International Journal for Parasitology* **35**, 245–253.
- Stack SP, Stein DA and Landfear SM (1990) Structural isoforms of a membrane transport protein from *Leishmania enriettii*. *Molecular and Cellular Biology* **10**, 6785–6790.
- Stephens NA and Hajduk SL (2011) Endosomal localization of the serum resistance-associated protein in African trypanosomes confers human infectivity. *Eukaryotic Cell* **10**, 1023–1033.
- Steverding D (2017) The history of leishmaniasis. *Parasites & Vectors* **10**, 1–10.
- Szempruch AJ, Dennison L, Kieft R, Harrington JM and Hajduk SL (2016) Parasites. *Nature Publishing Group* **14**, 669–675.
- Tobin JE, Laban A and Wirth DF (1991) Homologous recombination in *Leishmania enriettii*. *Proceedings of the National Academy of Sciences of the USA* **88**, 864–868.
- Torrecilhas AC, Schumacher RI, Alves MJM and Colli W (2012) Vesicles as carriers of virulence factors in parasitic protozoan diseases. *Microbes and Infection* **14**, 1465–1474.
- Trocoli Torrecilhas AC, Tonelli RR, Pavanelli WR, da Silva JS, Schumacher RI, de Souza W and Manso Alves MJ (2009) *Trypanosoma cruzi*: parasite shed vesicles increase heart parasitism and generate an intense inflammatory response. *Microbes and Infection* **11**, 29–39.
- Twu O, de Miguel N, Lustig G, Stevens GC, Vashisht AA, Wohlschlegel JA and Johnson PJ (2013) *Trichomonas vaginalis* exosomes deliver cargo to host cells and mediate host:parasite interactions. *PLoS Pathogens* **9**, e1003482.
- Villaseñor-Cardoso M, Salaiza N, Delgado J, Gutiérrez-Kobeh L, Pérez-Torres A and Becker I (2008) Mast cells are activated by *Leishmania mexicana* LPG and regulate the disease outcome depending on the genetic background of the host. *Parasite Immunology* **3**, 425–434.
- Vivarini DC, de Meirelles R, Pereira S, Luiza K, Teixeira D, Calegari-silva TC, Bellio M, Laurenti MD, Eduardo C, Corbett P, Gomes DC, Soares RP, Silva M, Silveira FT and Lopes UG (2011) Human cutaneous leishmaniasis: interferon-dependent expression of double-stranded RNA-dependent protein kinase (PKR) via TLR2. *FASEB Journal* **25**, 4162–4173.
- Wong ILK and Chow LMC (2006) The role of *Leishmania enriettii* multidrug resistance protein 1 (LeMDR1) in mediating drug resistance is iron-dependent. *Molecular and Biochemical Parasitology* **150**, 278–287.
- Wong ILK, Chan K-F, Burkett BA, Zhao Y, Chai Y, Sun H, Chan TH and Chow LMC (2007) Flavonoid dimers as bivalent modulators for pentamidine and sodium stibogluconate resistance in *Leishmania*. *Antimicrobial Agents and Chemotherapy* **51**, 930–940.
- Young DG and Duncan MA (1994) *Guide to the Identification and Geographic Distribution of Lutzomyia Sand Flies in Mexico, the West Indies, Central and South America (Diptera: Psychodidae)*, 54th edn., Associated Publishers, American Entomological Institute, Gainesville.