

# Consensus document on optimal management of patients with common arterial trunk

Mark G. Hazekamp<sup>1\*</sup>, David J. Barron<sup>2</sup>, Joanna Dangel<sup>3</sup>, Tessa Homfray<sup>4</sup>,  
Monique R.M. Jongbloed<sup>5</sup> and Inga Voges<sup>6</sup>

## Original Article

**Cite this article:** Hazekamp MG, Barron DJ, Dangel J, Homfray T, Jongbloed MRM, and Voges I (2021) Consensus document on optimal management of patients with common arterial trunk. *Cardiology in the Young* **31**: 915–939. doi: [10.1017/S1047951121001219](https://doi.org/10.1017/S1047951121001219)

Received: 18 June 2020  
Revised: 18 September 2020  
Accepted: 30 September 2020  
First published online: 21 May 2021

### Keywords:

Congenital heart disease; common arterial trunk; truncus arteriosus; surgery; cardiology; consensus document

### Abbreviations:

aCGH, Array comparative genomic hybridization AEPC Association for European Paediatric and Congenital Cardiology; CAT, Common arterial trunk; CMRI, Cardiovascular magnetic resonance imaging; CT, Computed tomography; EACTS, European Association for Cardio-Thoracic Surgery; ECG, Electrocardiogram; IAA, Interrupted aortic arch; ICU, Intensive care unit; LPA, Left pulmonary artery; PA, Pulmonary artery; PR, Pulmonary regurgitation; RPA, Right pulmonary artery; RV, Right ventricle; RVOT, Right ventricular outflow tract; TOE, Transoesophageal echocardiography; TTE, Transthoracic echocardiography; TrR, Truncal regurgitation; TrV, Truncal valve; TSM, Septomarginal trabeculation; VIF, Ventriculoinfundibularfold; VSD, Ventricular septal defect

### Author for correspondence:

M.G. Hazekamp, Department of Cardiothoracic Surgery, Leiden University Medical Center, Albinusdreef 2, 2333 ZA Leiden, The Netherlands. Tel: +31-715262-348. E-mail: [m.g.hazekamp@lumc.nl](mailto:m.g.hazekamp@lumc.nl)

Document Reviewers: Robert H. Anderson (UK), Emre Belli (France), Hannah Rosemary Bellsham-evell (UK), Ulrike Herberg (Germany), Joachim O.M. Photiadis (Germany), Serban C. Stoica (UK), Yves d'Udekem (Australia)

\*All authors contributed equally to this work.

This Article has been co-published with permission in the European Journal of Cardio-Thoracic Surgery and in *Cardiology in the Young*. All rights reserved in respect of European Journal of Cardio-Thoracic Surgery, ©2020 The Authors.

© The Author(s), 2021. Published by Cambridge University Press.

<sup>1</sup>Department of Cardiothoracic Surgery, University Hospital Leiden, Leiden, Netherlands; <sup>2</sup>Division of Cardiovascular Surgery, The Hospital for Sick Children, Toronto, Canada; <sup>3</sup>Department of Perinatal Cardiology and Congenital Anomalies, Centre of Postgraduate Medical Education, Warsaw, Poland; <sup>4</sup>Department of Medical Genetics, Royal Brompton and Harefield hospitals NHS Trust, London, UK; <sup>5</sup>Department of Anatomy and Embryology, Leiden University Medical Center, Leiden, Netherlands and <sup>6</sup>Department for Congenital Cardiology and Pediatric Cardiology, University Medical Center of Schleswig-Holstein, Kiel, Germany

## Introduction

Congenital heart disease comprises a broad field with many different diagnoses and wide-ranging anatomical variations of all kinds. This enormous variation is probably responsible for the relative lack of guidelines and consensus documents on the subject, especially when compared with structural ‘adult’ heart disease.

Nevertheless, guidelines and consensus documents are important because their intention is to optimize decision-making based on a critical review of the literature, including the most recently published papers, and on the personal experience of professionals in the field. This consensus document on the common arterial trunk (CAT) has been compiled by task force members of the European Association for Cardio-Thoracic Surgery (EACTS) and the Association for European Paediatric and Congenital Cardiology (AEPC). Task force members were chosen according to their specific expertise with the goal of being able to encompass the full spectrum of CAT. The members of the task force have given a full disclosure of any conflicts of interests and relations with industry. There are no known conflicting interests or relations with industry that might have influenced the recommendations in this document.

The authors of this document have strictly adhered to the Methodology Manual for EACTS Clinical Guidelines that was published in 2015.<sup>1</sup> The task force has performed a complete review of the existing literature, and all available data were carefully weighed to determine their usefulness to construct recommendations and statements. There are no randomized or prospective studies on CAT, and most of the available literature consists of retrospective patient series (with a few multicenter studies being the exception). High-level evidence is therefore not readily available and most evidence is level C (Table 1).

Because this is a consensus paper, recommendations are often not backed by strong evidence. Therefore, the task force has chosen to limit the number of recommendations (Table 2) and instead to make statements intended to assist and facilitate clinical decision-making.

The task force has aimed for completeness by including all relevant topics related to the management of CAT. In rare cases of CAT, ventricular hypoplasia is present, which precludes the construction of a biventricular circulation. Forms of CAT with hypoplasia of 1 of the ventricles are sometimes named here when relevant, but, because the management is typically completely different, they are not topics of this consensus document.

## Background

CAT, also known as persistent truncus arteriosus or truncus arteriosus communis, is a rare form of congenital heart disease characterized by a common ventriculo-arterial junction, connecting to a single artery that gives rise to the aorta and the pulmonary and coronary arteries. There is a single arterial valve [truncal valve (TrV)] between the cardiac ventricles and the common truncal artery. The TrV typically overrides an outlet type of ventricular septal defect (VSD). Atrial septal defects type 2 (ostium secundum type) are frequently found.

Development of CAT is thought to be related to abnormal development of neural crest cells or to their aberrant interaction with second heart field cells, but its exact aetiology is still not known. CAT is closely associated with the 22q11.2 deletion syndrome, and mutations in genes encoding NKX and GATA transcription factors may also be related to the development of CAT.<sup>2</sup>

Associated cardiovascular anomalies are common in CAT. The TrV is frequently malformed and regurgitant. Obstruction is rare but not completely absent. The valve is most often bi-, tri- or quadricuspid, and the valve leaflets may be dysplastic and fibrotic in some instances. The coronary arteries do not rise from an aorta but from a CAT and are therefore considered

**Table 1.** Levels of evidence.

Level of evidence A	Data derived from multiple randomized clinical trials or meta-analyses
Level of evidence B	Data derived from a single randomized clinical trial or large non-randomized studies
Level of evidence C	Consensus of expert opinion and/or small studies, retrospective studies and registries

**Table 2.** Classes of recommendations.

Classes of recommendations	Definition	Suggested wording
Class I	Evidence and/or general agreement that a given treatment or procedure is beneficial, useful and effective	Is recommended/is indicated
Class II	Conflicting evidence and/or a divergence of opinion about the usefulness/efficacy of the given treatment or procedure	
Class IIa	Weight of evidence/opinion is in favour of usefulness/ efficacy	Should be considered
Class IIb	Usefulness/efficacy is less well established by evidence/opinion	May be considered
Class III	Evidence/general agreement that the given treatment/ procedure is not useful/effective and sometimes may be harmful	Is not recommended

anomalous. The position and course of the coronary arteries are frequently abnormal. The origin of the pulmonary arteries (PAs) can vary, and, in some instances, 1 PA does not arise from the common artery.

A right aortic arch is commonly found with CAT, and an interrupted aortic arch (IAA) is present in 15–20% of all patients with CAT. IAA is mostly type B, and ductal patency is needed for perfusion of the lower half of the body. Apart from CAT with IAA or severe narrowing of the transverse arch, a ductus arteriosus is extremely rare in all other forms of CAT.<sup>3–5</sup>

Without surgical treatment, CAT is usually fatal. Delay of surgery may lead to an early onset of pulmonary vascular obstructive disease. In the last few decades, treatment of CAT has improved considerably, and current surgical mortality should be no more than 5–10% for solitary CAT. The majority of patients will need reinterventions, usually of the right ventricular outflow tract (RVOT) (conduit replacement/revision) and TrV.

## Methodology

The task force has chosen to categorize this manuscript into the following chapters: Genetics and morphology, prenatal diagnosis and management, preoperative management and surgery (including reoperations and percutaneous reinterventions), postoperative management in the intensive care unit (ICU), assessment during long-term follow-up and current outcomes of CAT treatment.

We performed a systematic review of non-randomized data in the literature. Publications older than 25 years—except for literature on cardiac morphology and nomenclature—and case reports were excluded from analysis. Exceptions to this rule are mentioned separately. Existing documents on the management of CAT have

been consulted when necessary.<sup>6</sup> Expert opinions were sought on controversial or uncertain issues for which we were unable to find sufficient evidence in the current literature. A critical appraisal of the available evidence was carried out and summarized in tables wherever possible; potential limitations of the reviewed publications were carefully provided. Consensus was sought to derive from the analysed data recommendations or statements to aid in practical and clinical decision-making.

Peer review was performed by reviewers selected by the EACTS Guidelines Committee, in collaboration with the Editor-in-Chief of the *European Journal of Cardio-Thoracic Surgery*. After the document was revised and finally approved by both the EACTS and AEPC, the manuscript was subsequently submitted for publication to the *European Journal of Cardio-Thoracic Surgery* and to *Cardiology in the Young*.

## Genetics of common arterial trunk

CAT is one of the rarest forms of congenital heart disease, with an overall incidence of 0.03–0.056/1000 live births, accounting for 0.21–0.34% of all cases of congenital heart disease.<sup>6,7</sup> In Europe, the average recorded prevalence is 1 per 10 000 pregnancies (including live births, stillbirths and terminations of pregnancy).<sup>6,7</sup> Many foetuses that spontaneously abort in the first trimester of pregnancy have a major congenital heart disease. Half of first trimester spontaneous abortions (50%) are associated with a major chromosomal abnormality; the nature of the congenital heart disease will not have been recognized in this group. The incidence of CAT is higher antenatally, both because of documented *in utero* deaths and also because of termination of pregnancy in a significant minority of cases.<sup>8,9</sup>

Even in the absence of a prenatal diagnosis, it is to be expected that a neonate will have clinical signs within the first 6 weeks of life; therefore, few cases are missed diagnostically, although a few may die before they reach a paediatric cardiology unit. Hence the postnatal incidence of CAT is likely to be broadly correct.

Studies of both the recurrence risk of CAT and of other congenital heart disease suggest a higher risk for CAT than for the majority of other causes of major congenital heart disease.<sup>10–14</sup>

Simple CAT (with no associated cardiac malformations except for a VSD) has a low recurrence risk of 1.6%. In contrast, complex CAT, which includes other cardiac defects, most commonly a right aortic arch, IAA, abnormal coronary artery origin and persistent left superior caval vein, has a higher recurrence risk of up to 13.6%. The overall risk of recurrence is 6.6%.<sup>10,11</sup>

## 22q11.2 deletion syndrome

The 22q11.2 deletion syndrome (also known as DiGeorge syndrome, velocardiofacial syndrome or CATCH22) accounts for the majority of genetic causes of CAT. The 22q11.2 deletion syndrome has an overall incidence of 1:4000. It is the most common microdeletion syndrome and the major genetic cause of CAT.

Confirmation of the diagnosis of the 22q11.2 deletion would have been difficult before the mid-1990s when fluorescence *in situ* hybridization was introduced, allowing rapid, accurate diagnosis both pre- and postnatally. The immune deficiency associated with the 22q11.2 deletion syndrome could not be confirmed prior to 1965, when it became possible to examine lymphocyte subsets.<sup>15</sup>

Of children with the 22q11.2 deletion, 80% have congenital heart disease, of which 10% is CAT; 35% of patients with CAT have

a 22q11.2 deletion.<sup>16–21</sup> Although the majority of cases of 22q11.2 deletion arise de novo, because there is decreased reproductive fitness in patients with the syndrome, a significant number of parents are affected, albeit much more mildly than their offspring, with CAT. The overall carrier frequency for a parent is between 6 and 28%; therefore, it is recommended that parents of an affected child be offered testing for the 22q11.2 deletion.<sup>22</sup> The recurrence risk in de novo cases of the 22q11.2 deletion in future pregnancies is negligible.

#### Other chromosome abnormalities associated with common arterial trunk

Array comparative genomic hybridization (aCGH) is now routinely used in some developed countries for chromosome analysis pre- and postnatally in babies identified with congenital abnormalities, but it is not universal.

Microdeletions of 8p23.1 and 18q11.2 are also associated with CAT. A deletion of 8p23.1 harbours the gene *GATA4* and 18q11.2, the gene *GATA6*. These are important transcription factors in cardiac development. Other c3hromosomal disorders with documented CAT include trisomy 13 and rarely trisomy 21. Mosaic trisomy 8<sup>23</sup> has been identified and may be missed on blood chromosome analysis. Other microdeletions have also been rarely associated with CAT (Table 3).

#### Single gene disorders associated with common arterial trunk

A number of syndromes have been associated rarely with CAT: These include CHARGE syndrome 2° mutations in *CDH7* and possibly very rarely in SEMA3E syndrome and Matthew Woods syndrome 2° mutations in *STRA6*.

Autozygosity mapping using next generation sequencing in a consanguineous population in Saudi Arabia has identified mutations in *NRPI* and *PRKDI*, both autosomal recessive disorders.<sup>24</sup>

Other single gene disorders include *GATA4*, *GATA6*,<sup>25</sup> *TBX1*, *TBX20*,<sup>26</sup> *NKX2-5* and *PLXN-D1*<sup>2</sup> (Tables 4 and 5).

Ultrarare single gene disorders are likely to be recognized now that whole exome and, in the future, whole genome sequencing are offered much more routinely. It is likely that those babies that die soon after diagnosis may be identified with new gene mutations in previously unrecognized disorders.

There is also an increased prevalence of CAT in foetuses of mothers with diabetes.

#### Recommendations

All (newborn) children with CAT should be referred to a clinical geneticist for genetic screening of the patient and family members. All babies/foetuses should be tested by aCGH.

All parents of babies with an abnormality on aCGH should be offered either aCGH to see if they are a carrier of the same deletion/duplication or a karyotype if a chromosome translocation is suspected as the underlying cause (evidence level A).

If the result of the aCGH test is normal and there are no other concerns about the baby's clinical condition, then at present no further testing can be recommended. If there has been a previous baby with a congenital heart disease (any type) or if there are any other congenital abnormalities, testing for single gene disorders by either a single gene test, such as *CDH7* for CHARGE, or a clinical exome using either next generation sequencing or whole genome sequencing (evidence level B) should be recommended (Table 6). The identification of an underlying aetiology for CAT may be

**Table 3.** Chromosome abnormalities identified in patients with common arterial trunk.

Chromosome location	Candidate gene for CAT
22q11.2	<i>TBX1</i>
8p23.1	<i>GATA4</i>
18q11.2	<i>GATA6</i>
5q35.1	<i>NKX2-5</i>
8p21.2	<i>NKX2-6</i>
6q	<i>PRDM1</i>
Trisomy 13	

CAT = common arterial trunk.

**Table 4.** Single gene mutations identified in patients with isolated common arterial trunk.

Gene	Inheritance
<i>NKX2-5</i>	AD
<i>GATA4</i>	AD
<i>GATA6</i>	AD
<i>PRKDI</i>	AR
<i>TBX1</i>	AD
<i>TBX20</i>	AD

AD = autosomal dominant; AR = autosomal recessive.

**Table 5.** Single-gene disorders associated with other congenital abnormalities.

Syndrome	Gene	Inheritance	Other features
CHARGE	<i>CDH7</i>	AD ( <i>de novo</i> )	Choanal atresia, growth and intellectual retardation, coloboma, genital and renal anomalies
	<i>NRPI</i>	AR	Polyhydramnios, short neck, cryptorchidism, early lethality
Matthew Wood	<i>STRA6</i>	AR	An/micro-ophthalmia, diaphragmatic hernia, pulmonary hypoplasia
	<i>GATA6</i>	AD	Pancreatic genes

AD = autosomal dominant; AR = autosomal recessive.

**Table 6.** Recommendations for genetic testing in patients with common arterial trunk.

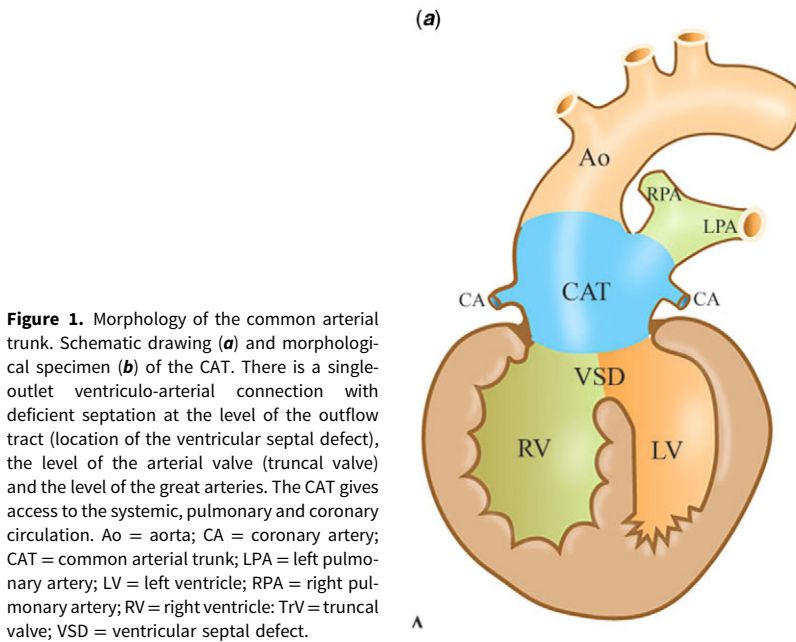
Genetic test	Associated abnormalities	Level <sup>a</sup>	Class <sup>b</sup>
aCGH	Yes or no	A	I
Single gene/exome sequencing	Yes	B	II

aCGH = array comparative genomic hybridization.

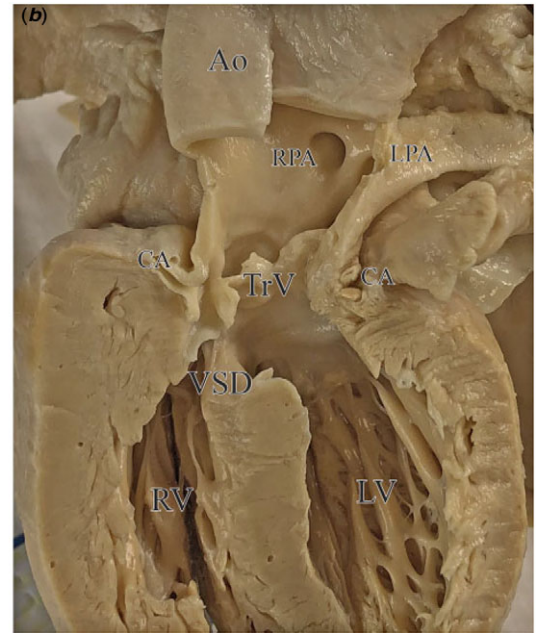
<sup>a</sup>Level of evidence.

<sup>b</sup>Class of recommendation.





**Figure 1.** Morphology of the common arterial trunk. Schematic drawing (a) and morphological specimen (b) of the CAT. There is a single-outlet ventriculo-arterial connection with deficient septation at the level of the outflow tract (location of the ventricular septal defect), the level of the arterial valve (truncal valve) and the level of the great arteries. The CAT gives access to the systemic, pulmonary and coronary circulation. Ao = aorta; CA = coronary artery; CAT = common arterial trunk; LPA = left pulmonary artery; LV = left ventricle; RPA = right pulmonary artery; RV = right ventricle; TrV = truncal valve; VSD = ventricular septal defect.



important in guiding patients regarding their present and, possibly, future reproductive options.

## Morphology of common arterial trunk

### Historical note and definition

CAT was first described in 1798 by Wilson;<sup>27</sup> the first pathomorphological autopsy diagnosis was established by Buchanan in 1862.<sup>28</sup>

CAT is defined as ‘A single arterial trunk that leaves the heart by way of a single arterial valve and that gives rise directly to the coronary, systemic and 1 or both pulmonary arteries’.<sup>29</sup> According to the segmental sequential analysis, there is a single outlet ventriculo-arterial connection (Fig. 1).

Initially, several controversies existed on the morphological diagnosis, mainly relating to whether or not cases with pulmonary atresia and an aortopulmonary window should be included. Because the latter malformations relate to a different anatomical spectrum and developmental background, both pulmonary atresia and aortopulmonary window (defect limited to the level of the intrapericardial trunks distal to the arterial valves<sup>30</sup>), are not included in the diagnosis. Likewise, using the terms pseudotruncus, which refers to pulmonary or aortic atresia, and hemitruncus (anomalous origin of 1 PA from the ascending aorta), is discouraged.<sup>31,32</sup>

### Embryology

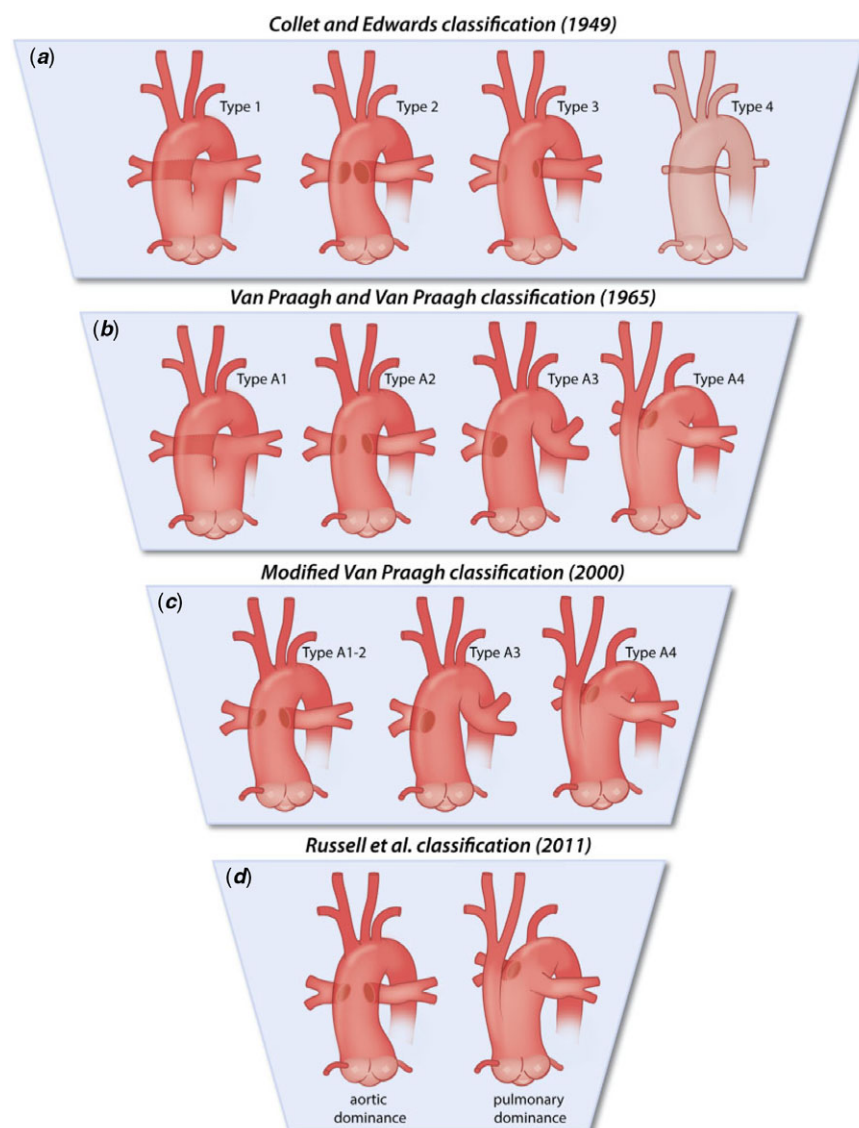
Morphogenetically, the main features of CAT can be attributed to a deficiency of the aortopulmonary septal complex, leading to the lack of aortopulmonary septation at three levels: the level of the great arteries, the valvular level and the level of the outflow tract. The latter results in the presence of a subarterial VSD.<sup>33</sup> The deficiency of septation can vary, and the intrapericardial part of the arterial trunk can still be separated to some extent, particularly in the case of pulmonary arterial dominance.<sup>34</sup>

The aortopulmonary septal complex is formed by a contiguous contribution of neural crest cells, which migrate to the heart from the crest of the neural tube during early development, and of second heart field cells, another population of cardiac

progenitors that contribute to formation of the outflow tract.<sup>35–37</sup> During normal development, the initially unseparated vascular part of the outflow tract is referred to as the aortic sac. For adequate separation of the different levels of the embryonic outflow tract, development of the aortopulmonary septal complex and proper fusion of the outflow cushions are necessary.<sup>38</sup> Neural crest cells migrating to the heart become positioned not only at the level of the aortic sac, but also in the condensed mesenchyme of the septal outflow tract cushion at the orifice level as well as below this level.<sup>39</sup> Separation of the aortic sac thus extends to the arterial orifice level (i.e. putative arterial valve) and into the myocardial outflow tract, giving rise to the above-mentioned defects at three levels in case of impaired septation. The function of the neural crest cells depends on proper signalling with their environment. Deficiency of neural crest-related genes such as PAX3, retinoic acid, *SEMA3C* and *LRP2*, among others, causes CAT combined with aortic arch anomalies in animal models.<sup>40–43</sup> Although deficiency of neural crest cells has been shown to cause CAT in many studies (reviewed in<sup>39</sup>), as described above, these cells are not the only cell types that are crucial for proper formation of the aortopulmonary septal complex. Outflow tract septation is likely the result of a complex interaction between neural crest cells and cells derived from the second heart field. The transcription factor TBX1, which is related to the 22q 11.2 deletion syndrome (DiGeorge syndrome) in humans, is a critical regulator of second heart field development and is associated with multiple forms of outflow tract anomalies in animal models, including CAT.<sup>44</sup>

### Classification of the common arterial trunk

Over the past decades, several CAT classification systems have been developed (Fig. 2). The first was proposed by Collet and Edwards in 1949 (Fig. 2a),<sup>3</sup> who initially defined four types of CAT. Types 1 to 3 referred to the mode by which the left and right PAs (RPAs) arise from the CAT. Type 4 of the Collet and Edwards classification is no longer considered a CAT subtype because it refers to cases with no pulmonary trunk and both PAs, with aortopulmonary collateral circulation. In addition, the classification does not consider aortic or pulmonary dominance caused by,



**Figure 2.** Historical overview of classification systems for common arterial trunk. **(a)** Collet and Edwards.<sup>3</sup> The left pulmonary artery (LPA) and right pulmonary artery (RPA) arise from the common arterial trunk (CAT) by interposition of a short pulmonary trunk (type 1), or the LPA and the RPA arise from the CAT with separate orifices, either with their orifices positioned close together (type 2) or widely spaced (type 3). Type 4, in which both pulmonary arteries (PAs) and the pulmonary trunk are absent and the pulmonary circulation is supplied by the aortopulmonary collateral circulation, is no longer considered the CAT. **(b)** Van Praagh and Van Praagh.<sup>4</sup> The 'A' in these subtypes refers to cases with ventricular septal defect (VSD).<sup>5</sup> Cases without VSD (type B) are not included in the drawing. Type A1, in which the LPA and RPA arise from the CAT by interposition of a short pulmonary trunk, conforms to Collet and Edwards type 1. In type A2, the LPA and RPA arise from the CAT with separate orifices, either close together or widely spaced (combination of types 2 and 3 of Collet and Edwards). Type A3, in which 1 PA is lacking, refers to cases with a single PA supplying 1 lung and arteries arising from the ductus or collateral arteries usually supplying the other lung. Type A4 includes hearts with aortic coarctation, atresia or absence of the aortic isthmus. The descending systemic circulation is supplied by a large persistently patent arterial duct. **(c)** In the modified van Praagh classification,<sup>45</sup> a simplification was proposed by combining types A1 and A2 of Van Praagh and Van Praagh (i.e. combining types 1, 2 and 3 of Collet and Edwards), thus giving rise to a type A1-2 where the LPA and RPA arise from the CAT by interposition of a short pulmonary trunk or with separate orifices, either arising close together or widely spaced, without making this distinction. Types A3 and A4 conform to the original Van Praagh and Van Praagh classification. **(d)** Classification based on two subtypes: aortic versus pulmonary dominance.<sup>32,46</sup> The aortic dominant type is characterized by adjacent or nearly adjacent PAs from the posterolateral aspect of the CAT, whereas in the pulmonary dominant type the distal systemic circulation is dependent on the patency of the arterial duct, as is encountered in cases of interruption of the aortic arch or coarctation. We endorse the latter classification as proposed by Russell *et al.*<sup>46</sup>

for example, obstructive lesions in the aorta and non-confluent PAs. Van Praagh *et al.*<sup>4</sup> therefore revised the classification system in 1965 (Fig. 2b) to include cases with a single PA supplying 1 lung, with arteries arising from the arterial duct/collateral arteries usually supplying the other lung (type A3), as well as cases with hypoplasia, coarctation, atresia or absence of the aortic isthmus, leaving the descending systemic circulation dependent on its blood supply from a large patent arterial duct (type A4). Cases with VSD were referred to as type A and those without, as type B. In 1976, Calder *et al.*<sup>5</sup> provided an overview of clinical, haemodynamic and angiocardigraphic findings, together with pathological data using this classification system. In this large study, all cases had a VSD. A minor simplification of the classification system was made by members of the Society of Thoracic Surgeons-Congenital Heart Surgery Database Committee and the EACTS in 2000: they combined type A1 and A2 (Fig. 2c).<sup>45</sup>

<sup>a</sup>Level of evidence.

In 2011, a simplified classification system with only two major subtypes was proposed, based on observations in a selection of autopsy hearts that (i) all hearts could be assigned to 1 of 2 groups

based on the dominance of either the aortic or pulmonary circulation of the CAT; (ii) pulmonary dominance was found only when the aortic component of the trunk was hypoplastic and the descending aorta was supplied by the arterial duct; (iii) PAs arising from the lateral sides of the major pathway were observed only in the setting of pulmonary dominance; and (iv) only in cases with pulmonary dominance was the aortic component of the common trunk separate from the pulmonary component (Fig. 2d).<sup>32,46</sup> These observations resulted in a classification system that divides CAT into two subtypes: cases with either aortic or pulmonary dominance. The authors argued that an advantage of this system, in addition to its simplification, is that it is congruent with embryology as well as with the clinical relevance of emphasizing the key morphological determinants (i.e. aortic or pulmonary dominance) of surgical outcome. A collateral advantage of this system is that the use of alphanumeric indications can be avoided by simply referring to aortic or pulmonary dominance, which is recommended for clinical discussions. The latter classification is endorsed by this task force. We acknowledge that this classification requires an additional description of anatomy, such as details on PAs.

### Sequential segmental analysis

The majority of hearts with CAT have situs solitus (normal atrial arrangement) and concordant atrioventricular connections. Cases with right isomerism have been reported as have cases with a discordant atrioventricular connection.<sup>47–49</sup> The ventriculoarterial connection is a single outlet, with a variable amount of overriding of the TrV over the ventricular septum, including origin of the CAT exclusively from the right ventricle (RV).<sup>50</sup> Associated anomalies are common and should be described in detail (Table 7).

### Associated anomalies

#### Ventricular septal defect

VSD is present in a majority of cases. CAT with an intact ventricular septum is extremely rare and is not included in this document. The VSD is an outlet VSD, classically subarterial, whereby the truncal orifice can override the ventricular septum to various degrees (0–100%) and may originate exclusively from either ventricle.<sup>50,51</sup> The commonly used designation of the VSD as a malalignment VSD is incorrect in our view, because it implies a deviation of the outlet septum, which is deficient in CAT.

The VSD is generally large and non-restrictive; however, cases with extreme overriding (CAT arising from 1 ventricle) are associated with restrictive VSDs, which may affect the choice of surgical strategy.<sup>51</sup>

The VSD is situated between the limbs of the septomarginal trabeculation (TSM), and bordered superiorly by the TrV. The posteroinferior rim can either be muscular, comprising the continuation of the ventriculoinfundibular fold (VIF) and the TSM, or perimembranous. Its makeup is determined by the extent of development of the VIF,<sup>29</sup> which also determines whether continuity or discontinuity exists between the TrV and the mitral and tricuspid valves.<sup>29</sup> In most cases, fibrous continuity occurs between the mitral valve and the TrV. In the case of a well-developed VIF and TSM, the TrV is separated from the tricuspid valve. In the case of a hypoplastic VIF and TSM, there is fibrous continuity between the tricuspid valve and the TrV, in which case part of the posteroinferior rim of the VSD is fibrous; and thus, the outlet is a perimembranous VSD. This fibrous area contains the His bundle, which in these cases is not covered by muscle tissue and thus is considered more prone to damage during surgical repair.

#### Truncal semilunar valve

The number of valve leaflets in CAT can vary from 1 to 5; however, tricuspid, quadricuspid and bicuspid valve morphologies are most common.<sup>5,50</sup> Unicuspid and pentacuspid valves are extremely rare. One or more raphe can be present.<sup>56,57</sup> The TrV is often dysplastic, which affects function. The valve can have variable degrees over overriding and is most often dextroposed.

#### Pulmonary arteries

The PAs can arise separately from the CAT or via a short common trunk. The origin is most commonly from the left posterolateral part of the trunk. In the case of separate ostia, the left PA (LPA) is generally in a higher position than the RPA. Ostial stenosis has been described and can restrict pulmonary blood flow.<sup>58</sup> Pulmonary arterial branch obstruction may occur but is rare. Pulmonary arterial hypoplasia or atresia, as well as the unilateral

**Table 7.** Anatomical variations and associated cardiac and extracardiac anomalies in patients with common arterial trunk.

Cardiac-associated anomalies	Specification
Aortic arch and tributaries	Atresia/interruption aortic arch, usually type B Aortic hypoplasia/coarctation Right aortic arch, ± mirror image branching Double aortic arch (rare) Aberrant subclavian artery (arteria lusoria) Aortic dilatation <sup>a</sup>
Arterial duct	Absent Bilateral Patent (usually associated with aortic stenosis/interruption) Patent with normal aortic arch (rare)
Atrial septum	ASD type 2 (ostium secundum defect) ASD type 1 (ostium primum defect, partial AVSD) (rare) Common atrium AVSD
AV valves and junction	Mitral valve atresia/stenosis Tricuspid valve atresia/stenosis (rare) Polyvalvular disease Double inlet left ventricle Discordant AV connections
Coronary arteries	High 'take-off' from aorta/acute angulation Single coronary arteries Coronary ostium positioned near valve commissure Absent left main stem/double coronary orifices Ectopic position of coronary ostium Proximity of coronary arteries to pulmonary arteries Anomalous coronary arterial course Congenital ostium stenosis Large infundibular branching of RCA RCx origin from RPA Intramural coronary arterial course

(Continued)



Table 7. (Continued)

Cardiac-associated anomalies	Specification
Pulmonary arteries	
	PA hypoplasia/agenesis/atresia, unilateral absence of a PA, MAPCAs
	Peripheral PA stenosis/PA branch obstruction
	Distal ductal origin of 1 PA
	Crossed/malpositioned PAs (association with aortic arch interruption)
Situs anomalies	
	Discordant AV connections
	Heterotaxy syndrome
	Situs inversus
Truncal valve	
	Bicuspid (approximately 7-8%)
	Tricuspid (approximately 60-70%)
	Quadracuspid (approximately 20-30%)
	Unicuspid, pentacuspid and hexacuspid (extremely rare)
	Dysplasia/fibrosis
Venous connections	
	Abnormal pulmonary venous connections, in particular PAPVC
	Abnormal systemic venous connections, in particular PLSVC
Ventricles	
	Anomalous muscle bundles
	Anteroseptal twist
	Pronounced ALM
	Pronounced PMM
	Ventricular dominance, e.g. in unbalanced AVSD, extreme overriding of arterial trunk, mitral or tricuspid atresia (rare)
Ventricular septum	
	VSD
	Outlet subarterial with muscular posterior rim (most frequent)
	Outlet perimembranous (less common)
	Muscular 'remote' (uncommon)
	Multiple VSDs (uncommon)
Non-cardiac anomalies <sup>b</sup>	
	Intracranial aneurysms
	Palatum anomalies <sup>c</sup>
	Pancreas anomalies
	Parathyroid anomalies <sup>d</sup>

(Continued)

Table 7. (Continued)

Cardiac-associated anomalies	Specification
	Phenylketonuria
	Thymus anomalies <sup>c</sup>
	Tracheobronchial stenosis <sup>d</sup>

Data derived from multiple sources.<sup>4,5,31,50-55</sup>

ALM = anterolateral muscle; ASD = atrial septal defect; AV = atrioventricular; AVSD = atrioventricular septal defect; MAPCAs = major aortopulmonary collateral arteries; PA = pulmonary artery; PAPVC = partial anomalous pulmonary venous connection; PLSVC = persistent left superior caval vein; PMM = posteromedial muscle; RCA = right coronary artery; RCX = ramus circumflex; RPA = right pulmonary artery; VSD = ventricular septal defect.

<sup>a</sup>Possibly secondary characteristic.<sup>b</sup>Often caused by genetic/syndromic anomalies (see 'Genetics of common arterial trunk').<sup>c</sup>Associated with 22q11.2 deletion syndrome.<sup>d</sup>Associated with CHARGE syndrome.

absence of 1 PA, distal ductal origin of 1 PA or origin of a PA from an aortopulmonary collateral have all been described.

### Coronary artery anatomy

A myriad of coronary arterial variations can be observed.<sup>56</sup> Coronary anomalies were observed in 64% in 1 series.<sup>50</sup> The left coronary orifice is usually positioned in the posterior part of the common trunk, and the right orifice, in the right anterior and lateral parts.<sup>50,56</sup> Variations in ostial position/distribution include single coronary arteries (uncommon), double coronary orifices, position of ostia near the TrV commissure, ostium stenosis/pinpoint orifices and an intramural proximal course of coronary arteries.<sup>50,56,59</sup>

High take-off leading to acute angulation may be related to aortic dimensions, as was also described for other forms of congenital heart disease.<sup>60</sup> Large infundibular branches of the right coronary artery may pose a risk for right ventriculotomy.<sup>61</sup> Right circumflex branching from the right coronary artery has been described and poses a risk for obstruction during pulmonary banding.<sup>62</sup> Coronary arteries may be positioned close to PAs, which poses a risk of coronary arterial damage during excision of the Pas.<sup>50,52,59</sup>

Left dominant coronary arterial distribution has been reported in a higher incidence than in the general population.

### Truncal root, aortic arch and arterial duct

Although described by some authors to be present in CAT,<sup>4,5</sup> the arterial duct is usually absent in cases with an unobstructed aortic arch. In the case of a widely open duct, the transverse arch is in most cases either interrupted or hypoplastic. IAA or aortic coarctation is present in 15–20% of patients; in these cases, the blood supply to the distal aorta is via an open arterial duct. The interruption in most cases affects the aortic B segment (between the left carotid and the subclavian artery). A right-sided aortic arch is present in approximately one-third of patients; mirror image branching is usual. An aberrant subclavian artery occurs in 4–10% of cases.<sup>53</sup> A double aortic arch has been described but is rare.<sup>3,63</sup>

The size of the (neo)aortic root is increased, and further dilation is often observed during longer follow-up but is rarely associated with dissection.<sup>64,65</sup> Whether the dilation is secondary to disturbed haemodynamics, primarily caused by a developmental anomaly of the vascular wall, or a combination of both, is at present unclear. Aortic arch anomalies are more prevalent in cases with the 22q11.2 deletion syndrome.<sup>66</sup>

### *The left ventricle in common arterial trunk/ventricular abnormalities*

Prominent muscle bundles, such as a prominent anterolateral muscle bundle, anteroseptal twist and posteromedial muscle, are commonly observed in CAT and may compromise the function of the mitral valve. Association with tricuspid atresia/RV hypoplasia and (in rare cases) mitral atresia/left ventricular hypoplasia, has been described.<sup>53</sup>

### *Other associated anomalies*

Several other cardiac and noncardiac malformations have been associated with CAT (summarized in Table 7). Non-cardiac anomalies are usually related to genetic syndromes, mainly the 22q11.2 deletion syndrome, which may adversely affect prognosis.

## **Prenatal diagnosis and management**

### *First trimester ultrasonography*

Multidisciplinary cooperation in the field of foetal cardiology is developing. Using modern ultrasound equipment, it is now possible to diagnose congenital heart defects from the first trimester of pregnancy.<sup>67</sup> Obstetricians and trained sonographers are on the first diagnostic line. First trimester ultrasonography is recommended in the majority of European countries between 11.0 and 13.6 weeks of gestation, when the crown-to-rump length is between 45 mm and 85 mm. The increased nuchal translucency,<sup>67,68</sup> tricuspid insufficiency, reverse atrial contraction wave, but more precisely—an increased ductus venosus pulsatility index<sup>69</sup>—can be signs of foetal cardiac problems. High-frequency ultrasound or the spatiotemporal image correlation method can help in more precise cardiac diagnosis during the first trimester.

### *Second trimester foetal echocardiography*

The first series of foetal CAT was described in 2001.<sup>70</sup> Of 17 pregnancies, 4 were terminated, and 12 children were born alive. Of the live births, 7 were operated on and 5 survived. A series from 2003 described 23 fetuses with CAT.<sup>8</sup> Two fetuses died *in utero*, 8 pregnancies were terminated and 13 children were born alive. Of the live births, 3 died preoperatively, 5 died postoperatively and 5 children survived after the operation. TrV dysfunction was reported as the most severe sign of an adverse outcome, because the majority of those fetuses died *in utero* or before surgery.

The majority of cases of CAT in fetuses are diagnosed in the mid-trimester or later. This lesion is easy to miss during routine foetal ultrasound screening because the 4-chamber view is close to normal. The first sign of abnormality is the increased cardiac axis, usually 70° or more and usually with an intact ventricular septum in a typical 4-chamber view. The next step is to tilt the transducer towards the 5-chamber view to visualize the ventricular outflow tracts. The foetal parasternal long-axis view (starting from the lateral 4-chamber view) is the best for visualizing the VSD with 1 large vessel that overrides the interventricular septum. Such an image is characteristic for CAT or pulmonary atresia with VSD. Careful evaluation of the arterial valve is mandatory.

The TrV in CAT is always bigger than that of the aortic valve in tetralogy of Fallot or pulmonary atresia with VSD. Leaflets are described as dysplastic if they are thickened or nodular, and they are easily visualized during the whole cardiac cycle. The number of leaflets can be seen on good quality images. Coronary arteries can rarely be evaluated during foetal echocardiography. Colour Doppler is helpful in assessing TrV function. If the valve is

dysplastic, turbulent forward flow and a regurgitant jet can be detected. Maximal velocity through the dysplastic, stenotic TrV is increased. Both stenosis and insufficiency of the TrV can deteriorate during pregnancy. If the heart is enlarged and there are signs of foetal congestive heart failure evaluated by the cardiovascular profile score,<sup>70</sup> transplacental digoxin can be administered to improve the foetal condition and prolong pregnancy.<sup>71</sup>

The next step is to evaluate the anatomy of the PA branches. The most common form is that in which the main PA arises from the trunk just over the TrV and divides into two usually normalized branches. The right and LPA may also arise from the ascending part of the trunk, close to one another or more distant from one another. Finally, there may be a common trunk from which right and left pulmonary branches arise and the aortic arch is interrupted.

In cases of CAT, the PAs and aortic arch anatomy should be evaluated from several different, commonly non-standard views, which is sometimes extremely difficult. It is important to establish the distance between the PAs and aortic arch morphology. If the arch is interrupted, the patient has a ductal-dependent lesion, and intravenous prostaglandin must be administered after delivery.

From a mediastinal view it is possible to distinguish between the right and left aortic arch. In this view the thymus should be evaluated. In a foetus, the thymus is a large organ, the diameter of which in millimetres is about the same as the gestational age. The other method of thymus evaluation was described by Karl *et al.*,<sup>72</sup> who measured the thymic-thoracic ratio (TT ratio), which is measured in the 3-vessel and tracheal views (3VT). The vessels should be situated in the middle of the mediastinum. If they are seen close to the anterior mediastinal wall and the thymus is not seen, 22q11.2 microdeletion is likely. Colour and power Doppler should be used to look for any kind of vascular rings, which may coexist with CAT, like an aberrant right or left subclavian artery. PA branches and the presence (in cases of IAA) or the absence of the arterial duct can also be evaluated in the mediastinal view.

Extracardiac anomalies are found in about 40% of fetuses with CAT. A detailed evaluation of the anatomy of all foetal organs is necessary, because the presence of other defects worsens the post-natal prognosis.

### *Differential diagnosis*

The most challenging diagnosis is to distinguish between CAT and tetralogy of Fallot with pulmonary atresia. Both lesions have similar appearances in prenatal scanning (Table 8). The heart is levorotated, and a large artery overrides the septum with a large outlet VSD. RVOT and PA branches are difficult to visualize. The major differences include the following: the morphology of the arterial valve is dysplastic in the majority of cases with CAT and normal in cases of pulmonary atresia with VSD; a more proximal branching of the PAs is seen in CAT; the size of the pulmonary branches is normal or even enlarged in CAT, but hypoplastic or within normal limits in pulmonary atresia with VSD; and finally, main aortopulmonary collaterals might be present in cases with pulmonary atresia with VSD but are not visualized in CAT.<sup>73</sup>

### *Counselling*

Counselling is an extremely important part of complete foetal cardiac evaluation. General rules for prenatal counselling should be followed. Initially, only the most important information should



**Table 8.** Differentiation between common arterial trunk and pulmonary atresia with ventricular septal defect in foetal echocardiography.

Cardiac structure	CAT	Pulmonary atresia with VSD
Cardiac axis	70–85°	50–70°
Overriding vessel	Very large	Slightly enlarged
Arterial valve	Usually dysplastic	Normal
Arterial velocity	Usually increased	Normal
Pulmonary artery size	Normal or slightly bigger	Often hypoplastic
Pulmonary artery flow	From the common trunk, forward	Reverse from the arterial duct
Collateral arteries	Absent	May be present

CAT = common arterial trunk; VSD = ventricular septal defect.

be provided in simple, clear terms. Parents must have the opportunity to ask questions, to express grief and to have time alone if desired.<sup>74</sup>

Because 35% of foetuses with CAT have a 22q11.2 microdeletion<sup>75</sup> and because it is possible that other genetic problems may occur, if CAT is diagnosed or strongly suspected in the early period of pregnancy, genetic testing should be discussed with parents.

The morphology of CAT in foetuses differs from that in infants diagnosed postnatally. More commonly, a dysplastic TrV, leading to foetal and neonatal congestive heart failure, is seen. TrV morphology, apart from the genetic findings, is crucial for prenatal counselling because TrV dysplasia and insufficiency carry a high-risk of intrauterine death and a more complicated course postnatally.

The type of arterial trunk is important for planning a surgical procedure. However, in a large surgical series, the morphology of CAT, apart from that in cases with dysplastic TrV, was not important in determining the surgical result.<sup>76</sup> Outcomes may vary between institutions; a general overview is given in the final chapter on outcomes. Although these data are important for overall knowledge about treatment results, during parental counselling, it is important to discuss outcomes on the basis of the results of the institution in which their child will be treated.

All aforementioned problems must be discussed with the parents who, once in possession of all the facts and according to the national laws of their country, can choose to either continue with or terminate the pregnancy. Termination rates vary among countries. The specialist in foetal cardiology must be prepared to discuss with parents both short- and long-term prognoses. In cases of late foetal diagnosis of CAT with a severely dysplastic TrV, perinatal palliative care may be discussed, with comprehensive medical and psychological support provided for parents.

## Preoperative management

### Delivery

Delivery should be in a tertiary centre with paediatric cardiologists and cardiac surgeons available. Neonatal long-distance transport should be avoided when possible.<sup>77</sup> Following these precautions guarantees direct post-partum echocardiographic evaluation and stabilization in a neonatal or paediatric intensive care setting whenever necessary. CAT is an unstable cardiac anomaly, and

**Table 9.** Typical neonatal chest X-ray and electrocardiographic findings.<sup>5,81,82</sup>

Chest X-ray	ECG
• Cardiomegaly with oval cardiac shape	• Non-specific
• Increased vascular markings	• Variable frontal QRS axis (but typically more than +60°)
• Right aortic arch	• Biventricular hypertrophy is more common than isolated right or left ventricular hypertrophy

ECG = electrocardiogram.

heart failure may present early when pulmonary vascular resistance drops in the first weeks after birth. Especially when CAT is associated with coexisting anomalies, such as interrupted arch or TrV regurgitation or obstruction, it is important to have all necessary tertiary care at hand.

Preterm delivery should be avoided because it has been reported that birth during the early term period of 37–38 weeks' gestation is associated with worse outcomes of neonatal cardiac surgery.<sup>78</sup> Exceptions may be made when foetal distress exists, e.g. due to severe TrV insufficiency. In these circumstances, earlier delivery and, if needed, delivery by planned caesarean delivery may sometimes be indicated to avoid foetal demise.

## Postnatal and preoperative diagnosis

### Clinical findings

Prenatally undiagnosed patients typically present in the neonatal period or early infancy with signs of increasing cardiac failure and mild central cyanosis. These signs include tachypnoea, hepatomegaly and feeding difficulties resulting in failure to thrive. Those patients who have predominant, more obvious cyanosis have persistently increased pulmonary vascular resistance, PA stenosis or PA hypoplasia.<sup>79</sup>

Symptoms can be exacerbated by TrV abnormalities.<sup>80</sup> Moderate-to-severe TrV insufficiency and the rarer condition of severe TrV stenosis can lead to early signs of congestive heart failure up to cardiogenic shock.<sup>79,80</sup> Patients with IAA have a duct-dependent systemic circulation, and closure of the ductus arteriosus leads to progressive cardiovascular collapse.

Heart murmurs can be heard in more than half of the patients in the first week of life.<sup>5</sup> Early diastolic murmurs can indicate TrV insufficiency. The heart sounds can be split or single, and explanations for this can be asynchronous closure of the valvar leaflets or production of a duplicate sound by vibrations within the arterial trunk.<sup>81</sup> Many patients also present with an ejection click.<sup>5</sup> The clinical examination should include assessment of non-cardiac anomalies.

### Chest X-ray and electrocardiogram

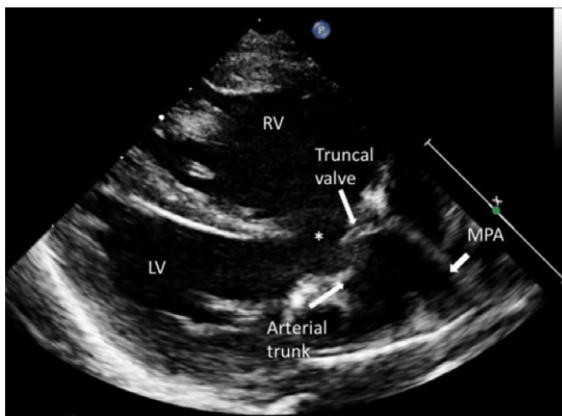
The chest X-ray demonstrates cardiomegaly and increased pulmonary vascularity in the majority of patients.<sup>5,81,82</sup> Right aortic arch occurs in 2530% of patients.<sup>53,81</sup> The heart is commonly oval in shape due to the absence or hypoplasia of the RVOT.<sup>5,82</sup> Decreased pulmonary vascularity can indicate underdevelopment of the pulmonary trunk and branch PAs (Table 9).<sup>5,82</sup>

The electrocardiogram (ECG) features are non-specific. The frontal QRS axis is variable but is reported in most cases to be more than +60°. Biventricular hypertrophy is frequently seen whereas isolated right or left ventricular hypertrophy is less common (Table 9).<sup>5,81</sup>

**Table 10.** Recommendations for postnatal and preoperative diagnosis.

Recommendations for postnatal and preoperative diagnosis	Level <sup>a</sup>	Class <sup>b</sup>	References
TTE is the imaging method of choice for the diagnosis and preoperative assessment of CAT	C	I	82,83
Three-dimensional echocardiography should be considered if additional information about truncal valve morphology and function is needed	C	I	83,84
Additional imaging using cardiovascular CT and CMRI are indicated when further information is needed	C	I	85–89
Cardiac catheterization is indicated in patients with a late presentation to assess pulmonary vascular resistance and to test pulmonary vascular reactivity	C	I	90,91

CAT = common arterial trunk; CMRI = cardiovascular magnetic resonance imaging; CT = computed tomography; TTE = transthoracic echocardiography.  
<sup>a</sup>Level of evidence.  
<sup>b</sup>Class of recommendation.



**Figure 3.** Parasternal long-axis view of a common arterial trunk. The arterial trunk overrides the ventricular septum and the large outlet ventricular septal defect (\*). LV = left ventricle; MPA = main pulmonary artery; RV = right ventricle.

*Preoperative transthoracic echocardiography*

Transthoracic echocardiography (TTE) is the imaging method of choice for the diagnosis and preoperative assessment of CAT (Table 10). TTE can usually provide all of the diagnostic information that is necessary for surgical and clinical decision-making. The crucial findings are a single arterial trunk overriding the ventricular septum and a large-outlet VSD.<sup>83</sup> These features are seen clearly in the parasternal long-axis view (Fig. 3).<sup>82,83</sup> The goals of preoperative TTE include, in particular, description of the VSD and any additional VSDs, morphological and functional evaluation of the TrV, assessment of the PAs (Fig. 4) and aortic arch (to exclude an IAA) and assessment of ventricular size and function.<sup>83</sup> In addition, coronary artery anatomy and any pulmonary and systemic venous anomalies should be reported. The sequential segmental approach should be followed. Suggested echocardiographic reporting elements are illustrated in Table 11.

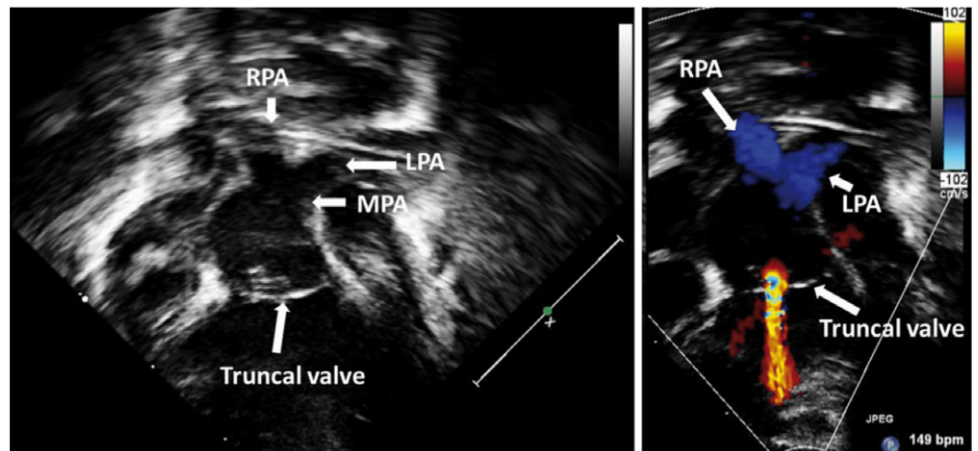
Three-dimensional echocardiography should be regarded as a complementary technique that can provide additional information about the morphology and function of the TrV (Table 10).<sup>83,84</sup>

*Cardiovascular computed tomography*

Echocardiography is the first-line and standard imaging modality for preoperative assessment.<sup>85</sup> In the majority of cases, echocardiography is sufficient. Cardiovascular computed tomography (CT) and cardiovascular magnetic resonance imaging (CMRI) are complementary techniques only when further information is needed (Table 10).<sup>86,87</sup> Cardiovascular CT allows detailed assessment of coronary arteries, PAs and aortopulmonary collaterals and is well suited to visualize aortic arch anomalies, including aortic coarctation and IAA.<sup>86,88,89</sup>

*Cardiac catheterization and angiography*

Diagnostic cardiac catheterization and angiography are rarely needed because echocardiographic and cross-sectional imaging techniques are often sufficient to correctly describe the anatomical details (Table 10).<sup>85</sup> In cases with a complex anatomy or an abnormal coronary artery pattern (e.g. only 1 branch PA arises from the CAT, blood supply for the other lung is provided by a ductus arteriosus or aortopulmonary collateral), cardiac catheterization may clarify the anatomical situation. Cardiac catheterization, however, is important in patients with a late



**Figure 4.** Two-dimensional transthoracic echocardiographs with colour Doppler showing the truncal valve and the pulmonary arteries in a neonate with a common arterial trunk. There is mild-to-moderate truncal valve regurgitation. LPA = left pulmonary artery; MPA = main pulmonary artery; RPA = right pulmonary artery.

**Table 11.** Proposed standard preoperative transthoracic echocardiographic views and reporting elements.<sup>82,83</sup>

Standard views with TTE	Reporting elements
Subcostal long- and short-axis	Atrial septum and shunts, drainage of the systemic and pulmonary veins, coronary sinus dilatation, relationship of the single arterial trunk to the ventricles, branch PAs and origins from the single arterial trunk
Parasternal long- and short-axis	Relationship of single arterial trunk to the ventricles, morphology and function of the truncal valve including commissures and numbers of leaflets, pulmonary anatomy, coronary anatomy
Apical 4- and 5- chamber	AV valve morphology and function, function of the truncal valve, ventricular septum, ventricular size and function, origin of the main and/or branch PAs
Suprasternal long- and short-axis	Arch anatomy including sidedness, presence of coarctation or IAA, presence of left SVC, pulmonary venous drainage, branch PAs and origins from the single arterial trunk

AV = atrioventricular; IAA = interrupted aortic arch; Pas = pulmonary arteries; SVC = superior vena cava; TTE = transthoracic echocardiography.

presentation to assess pulmonary vascular resistance and to test pulmonary vascular reactivity.<sup>90,91</sup>

#### Other investigations

The 22q11.2 deletion has been associated with non-cardiac features, which might be important for the perioperative management of patients, such as palatal anomalies, hypocalcaemia and immune deficiency.<sup>75,92</sup> Thus, genetic testing is recommended in the neonatal period prior to surgical intervention.

Children with the 22q11.2 deletion had an increased number of infections in the postoperative period after cardiac surgery.<sup>93</sup> Although only rarely do patients with the 22q11.2 deletion have severe immunodeficiency (complete absence of T cells),<sup>92</sup> irradiated blood products can be recommended for children with this condition.<sup>79</sup> Patients with the 22q11.2 deletion are also at risk for postoperative hypocalcaemia, which can occur unpredictably and has been associated with significant complications and mortality.<sup>94,95</sup> Consequently, serum ionized calcium should be measured pre- and postoperatively.<sup>94,95</sup>

#### Preoperative stabilization

Newborns with known CAT should not be discharged from the hospital before they are operated on. Discharge from the nursery or hospital with an undiagnosed CAT increases mortality.<sup>96</sup> Reparative surgery should be scheduled during the neonatal period if the condition of the patient permits.<sup>76,96–99</sup> TrV insufficiency or stenosis may lead to rapid haemodynamic deterioration and can be a reason for an early operation. Aortic arch interruption indicates the need for prostaglandin to secure ductal patency and may be another reason to perform the operation at an early stage.

Necrotizing enterocolitis is known to occur in term neonates with CAT; careful monitoring of feeding intolerance and abdominal distention is warranted.<sup>100</sup> Right aortic arch occurs in 25–30% of patients with CAT (more frequently when the 22q11.2 deletion is present) and may lead to tracheal compression.<sup>53,81</sup> When respiratory symptoms are present, a CT scan and/or bronchoscopy should be performed to search for coexisting tracheobronchial and vascular pathologies.<sup>101</sup> Coronary artery anomalies are

associated with CAT, so a preoperative CT scan should be pursued when echocardiography fails to provide accurate coronary artery anatomical details. The 22q11.2 deletion is present in 35% of all patients with CAT and should preferably be diagnosed or excluded before the operation.<sup>75</sup> Blood products can be irradiated in patients with the 22q11.2 deletion,<sup>79,102</sup> and calcium levels must be carefully monitored to prevent hypocalcaemia.<sup>79,95,103</sup>

Bilateral PA banding may be used to stabilize a patient when a reparative procedure is (relatively) contraindicated: very low body weight (<1.5 kg), necrotizing enterocolitis or brain damage. TrV insufficiency/stenosis requiring valve replacement may form another indication for bilateral PA banding and delaying definitive surgery.<sup>104–106</sup> Recovery from shock and weight gain are also indications for a staged repair.

When heart failure is present, stabilization may be obtained by diuretic therapy, mechanical ventilation and intravenous administration of inotropic medication, such as phosphodiesterase inhibitors and noradrenaline.<sup>107</sup> Nitric oxide should not be used in neonates and young infants with CAT because it may lead to an increase of pulmonary flow and haemodynamic instability due to a left-to-right shunt.<sup>108</sup> When mechanical ventilation is necessary to stabilize the patient, surgery should be planned urgently.

### Surgery for common arterial trunk

#### Decision-making and timing

All cases should be discussed by the multidisciplinary team whenever possible, unless the situation is considered an emergency. High-risk cases benefit particularly from a more inclusive discussion, which should include input from intensive care and anaesthesia specialists. Severe truncal regurgitation (TrR) is a risk factor for outcome but is not a contraindication for surgery. Families should be clearly counselled about the higher risks and poorer outcomes associated with greater than moderate TrR and with IAA (Table 12).

There is good evidence that complete repair can be offered in all cases, accepting the higher risk associated with the more complex subtypes. Nevertheless, it is important that other risk factors be considered (Table 13) as well as any social issues that may impact the family's capability to care for the child. In severe situations, it may be reasonable to offer comfort care as an option in cases in which the team feels that the operative risks are too high.

Repair should be performed during the neonatal period.<sup>96</sup> Cases with associated IAA may require earlier surgery if they are clinically unstable. There is no evidence that an operation in the first few days of life carries any benefit over planned repair at 714 days.<sup>76,97,99,109–119,134</sup>

In cases of premature birth, evidence shows that delaying surgery until gestational maturity has been achieved may reduce the risk of neurological morbidity secondary to cardiopulmonary bypass. This outcome has been shown in wider studies of neonatal surgery that included cases of CAT. The benefit is determined by extrapolation rather than specifically proven in a subset of patients with CAT.<sup>78</sup>

In patients who present later, in whom repair is undertaken when the child is older, there is a risk of reactive pulmonary vasculature or pulmonary vascular obstructive disease. Repair beyond the neonatal period has been achieved with good results, but infants who survive to this age are generally self-selected as the less complex variants. Older patients should undergo full haemodynamic assessment and calculation of pulmonary vascular resistance. Successful repair can be achieved with a resistance of up to 6–8 Wood units, or even as high as 9 Wood units as long as there is evidence of clear reversibility with oxygen therapy.<sup>135</sup>



**Table 12.** Recommendations for quoted operative risk (30-day mortality risk) associated with different common arterial trunk subtypes.

Clinical feature	Recommendation for quoted operative risk (30-day mortality risk)	Level <sup>a</sup>	Class <sup>b</sup>	References
No associated problems (none to moderate TrR)	5–10%	B	I	76,97,99,108–118
>Moderate TrR	20–30%	B	Ila	97,109,111,117,119–122
Interrupted arch	30%	B	I	97,115,123,124
Interrupted arch and >moderate TrR	60%	C	I	97,119,125
ECMO postoperatively	60–70%	C	I	76,126

ECMO = extracorporeal membrane oxygenation; TrR = truncal regurgitation.

<sup>a</sup>Level of evidence.

<sup>b</sup>Class of recommendation.

**Table 13.** Additional risk factors associated with surgical outcomes in common arterial trunk.

Clinical feature	Relative risk	Level <sup>a</sup>	Class <sup>b</sup>	References
TrR>moderate	++	B	I	97,109,111,117,119,121,127,128
Interrupted arch	++	B	I	97,115,124,127,129
Weight<2.5 kg	+	B	Ila	76,116,128,130,131
22q11.2 deletion syndrome	+/-	B	Ila	76,98,132,133
Coronary anomaly	++	B	I	76,117,128
Truncal valve replacement	+++	B	I	116

TrR = truncal regurgitation.

<sup>a</sup>Level of evidence.

<sup>b</sup>Class of recommendation.

### Use of bilateral pulmonary artery banding

Bilateral banding as a palliative procedure was attempted in the 1970s and 1980s as a means to delay definitive repair. Results were universally disappointing with an early mortality of >50%; the strategy was abandoned. There is no evidence to suggest that bilateral PA banding has any place in the regular management of CAT.

Nevertheless, in extreme cases where the risk of cardiopulmonary bypass is prohibitive (such as in the presence of an intracranial bleed or active necrotizing enterocolitis), the application of bilateral bands could be considered as a salvage procedure to balance the circulation in cases with uncontrolled congestive cardiac failure; this situation has been reported.<sup>104–106</sup> There is insufficient evidence to determine whether this approach leads to a better outcome in these extreme cases, but application of bilateral banding techniques as proposed in the hybrid management of hypoplastic left heart syndrome would be the only reference.<sup>136</sup> The diastolic run-off in the setting of CAT would be a greater concern than in hypoplastic left heart syndrome with the increased risk of coronary steal. Regular monitoring of the ECG for signs of ischaemia may be helpful.

### Surgical technique

#### Intraoperative parameters and bypass management

After sternotomy and opening the pericardium, snaring the RPA may help to achieve haemodynamic stabilization. Once cardiopulmonary bypass has started, both PAs must be snared to prevent massive pulmonary flow. Different cardiopulmonary bypass strategies have been described with limited evidence to support 1

strategy over another, and standard neonatal bypass management is entirely suitable for CAT repair, utilizing full-flow bypass with moderate hypothermia. There is no evidence to support the routine use of deep hypothermic circulatory arrest except in the setting of IAA, where it is used in all reported series. The use of regional cerebral perfusion during arch repair is well described but with no evidence to suggest any specific neurological benefit over deep hypothermic circulatory arrest in patients with CAT. Different myocardial protection strategies have also been described but antegrade administration is favoured by all published series. No specific benefit of 1 cardioplegia solution over another has been specifically shown in CAT nor of crystalloid versus cold blood-based preparations. The recommendation is that surgeons should use the neonatal cardioplegia strategy that they are familiar with. In cases of >moderate TrR, direct coronary ostial administration of cardioplegia may be necessary to achieve optimum delivery; however, care needs to be taken to identify the coronary ostia, which may be close to the valve commissures or in unusually high locations. Abnormal coronary patterns are frequent in CAT (Table 7).

There is no evidence to favour the use of specific inotropes in operative management, but it is recommended from extrapolation from other neonatal cardiac procedures that the use of phosphodiesterase inhibitors, such as milrinone, improve outcome.<sup>107</sup>

Delayed sternal closure has been used variably in most studies but there is no evidence that delayed closure reduces morbidity or mortality. Evidence does show that delayed sternal closure is safe and effective. The use of PA pressure monitoring lines postoperatively has been described in several series, but there is no evidence to prove any clinical benefit from their use. The use of PA lines is safe, and proponents have cited their use in patients felt to be at higher risk of pulmonary hypertensive crisis (such as older age at repair).

#### Pulmonary artery separation

The PAs should be detached from the main trunk as a single button. This procedure can be performed by excision directly from the trunk or by first transecting the trunk above the PA take-off and then excising them: both techniques have been used with equal success. Care should be taken to identify the position of the coronary ostia before undertaking the excision and to beware of high origins of the coronary arteries close to the PA origins.

The defect in the trunk can be either closed directly or with patch repair. There is no evidence that 1 technique is superior to the other. Most series report a mixture of techniques based on surgeon preference.

**Table 14.** Summary of surgical techniques commonly applied in truncal valve repair.

Technique/feature	Evidence for value	Level <sup>a</sup>	Class <sup>b</sup>	References
Annuloplasty	++	C	I	137,138
Cusp exclusion	++	C	I	139,140
Leaflet plasty	+	C	I	138,141
Bicuspidization	+	C	IIa	125,140
Tricuspidization (of quadricusp valve)	++	C	IIa	140
Replacement	Avoid	C	III	142

<sup>a</sup>Level of evidence.<sup>b</sup>Class of recommendation.**Table 15.** Techniques for reconstruction of the right ventricular outflow tract.

Technique	Applicable in	Benefit	References
Direct anastomosis with simple patch as a hood	All variants	Prolonged freedom from reintervention	128,143–148
Interposition of LAA with overriding patch	All variants	Less tension on branch PAs	97,149
Direct anastomosis with monocusp patch	All variants	May reduce degrees of PR, but little evidence	
Septation of the CAT with intra-arterial baffle	Only suitable when PAs come from common stem or ostia are close together	Avoids need to disconnect branch PAs from trunk	150–152

CAT = common arterial trunk; LAA = left atrial appendage; Pas = pulmonary arteries; PR = pulmonary regurgitation.

**Table 16.** Conduits for reconstruction of the right ventricular outflow tract.

Technique	Benefits	Popularity	References
Valveless conduits	Gore-Tex®; smaller calibre; easy to implant; readily available; few reports		97,153
Pulmonary homografts	Best performance; limited availability	+++	113,119,154,155
Aortic homografts	Second best performance; limited availability; longer length	++	121,156,157
Bovine jugular vein conduits	Widely used; smallest size, 12 mm; performance generally good but inferior to homografts	++	113,119, 158–160
Dacron valved conduits	Few reports; minimal size 12 mm	+	156,161,162

### Ventricular septal defect closure

The defect is most commonly a muscular outlet VSD but can also be perimembranous VSD. Closure is performed through the ventriculotomy, but in cases of perimembranous extension,

some sutures can be placed via the right atrium if preferred to gain access to the inferior border of the defect. There is no evidence to favour any particular patch material. Surgeons use their material of choice for neonatal VSD closure, most commonly xenograft pericardium, glutaraldehyde fixed autologous pericardium, thin-walled Gore-Tex® (W. L. Gore & Associates, Flagstaff, AZ, USA) or Dacron. The incidence of postoperative heart block is expected to be 1–2%.

### Truncal valve repair

The degree of TrV regurgitation is classified subjectively as none, mild, moderate and severe in most series. There is no evidence to support what degree of regurgitation merits intervention, but most series favour TrV repair in all cases of severe regurgitation. No recommendation can be given on the value of intervention in cases of moderate regurgitation.

A variety of repair techniques have been described that depend on the degree of dilatation of the annulus, the number of leaflets and the degree of dysplasia of the leaflets themselves.<sup>125</sup> Complete and partial annuloplasties have been used for a dilated annulus; leaflet thinning and release of fused commissures, for thickened valves; free edge plication and resuspension of commissures, for prolapsing leaflets; and cusp exclusion or union of neighbouring cusps, for localized dysplasia of 1 or 2 cusps. Most reports are a mixture of techniques and indications with variable results. A summary is shown in Table 14.

There is good evidence that repair should be undertaken in all cases of severe regurgitation. Best results are achieved with annuloplasty or cusp exclusion types of procedures, whereas leaflet procedures or cusp repairs have poor outcomes.<sup>137–141</sup> Tricuspidization of quadricusp valves is associated with better outcomes, although the quadricusp valve has overall worse outcomes than trileaflet valves.<sup>140</sup> Repair is likely to successfully reduce the degree of regurgitation; however, complete abolition of the regurgitation is usually not possible. Freedom from the need for subsequent reintervention is poor, with >50% of cases requiring rerepair or replacement within 5 years. Only 25% of patients are likely to survive without reoperation on the TrV at 20 years of age.<sup>76</sup> The need for concomitant TrV repair at the time of the initial CAT repair increases the operative risk by up to 3 times,<sup>111</sup> reflecting the risk of >moderate TrR in this condition.

TrV replacement should be avoided in neonatal CAT repair whenever possible.<sup>142</sup> Outcomes are extremely poor for replacement during the primary repair, with mortality approaching 100%. It is also noted that a combination of IAA with severe TrV regurgitation carries an extremely poor prognosis.<sup>111</sup>

### Reconstruction of the right ventricular outflow tract

Repair of CAT can be achieved either by placing a valved conduit between the RV and PA (RV-PA) or by creating a direct anastomosis of the PAs to the ventriculotomy, without a conduit (Tables 15 and 16). Both alternatives have been widely used, with the majority of cases utilizing a valved conduit; a variety of modifications of each strategy have been described. Extensive mobilization of both PAs down to the hilus is recommended to prevent stretching of the RPA and to facilitate a direct anastomosis. There is no evidence to support 1 strategy over another in terms of survival or operative outcome; similar early outcomes have been described with both techniques. However, there are no randomized trials, and patient characteristics are not always comparable within individual series. There is insufficient evidence to suggest that certain morphological subtypes may be better suited to a particular

strategy, but there is evidence that cases with >moderate TrR achieve better outcomes with a valved conduit because it avoids the volume loading of regurgitant flow in both ventricles.

There is good evidence that the direct anastomosis technique provides longer freedom from reoperation on the RVOT.<sup>97,128</sup> Although some studies have found that catheter reintervention is no different from those with an RV-PA conduit, there is strong evidence that these techniques delay the need for surgical reintervention at the cost of an increased degree of pulmonary regurgitation (PR) compared with the use of conduits.<sup>143–145,147–149,152</sup> There is no evidence to relate the PA arrangement to the suitability of each technique, but the direct anastomosis technique is likely to be easiest in anatomical types where the LPA and RPA arise from the aorta with a common stem and to become more difficult in patients with separate pulmonary ostia with widely spaced orifices due to the tension placed on the RPA.

Valved conduits have been the most prevalent technique used in the literature to reconstruct the RVOT. Homografts have the best performance in terms of freedom from reintervention, with pulmonary outperforming aortic homografts in most series.<sup>113,154,155</sup> In common with all conduits, the small sizes required in neonatal repair mean that reintervention is inevitable and usually relatively early compared with the use of conduits in older children. Freedom from surgical conduit replacement is described as 40–60% at 5 years in most larger studies.<sup>113,128,154,155,160</sup> Homografts are the most widely used conduit, followed by the bovine jugular vein (Contegra<sup>®</sup>, Medtronic, Minneapolis, MN, USA), which is reported to have good handling characteristics but inferior freedom from degeneration and outgrowth compared to that of homografts.<sup>113,119,154,158,159</sup> Dacron valved conduits have been used in small numbers and valveless Gore-Tex<sup>®</sup> tubes (W. L. Gore & Associates) in a handful of cases, but with insufficient numbers to be able to draw conclusions on the relative merits, only that they can all be safely used.<sup>97,128,148,153,155,162</sup> An expanded polytetrafluoroethylene conduit (with bulging sinuses and a fan-shaped valve of the same material) shows promising results and may be useful in the future.<sup>163</sup>

#### *Interrupted arch repair*

IAA occurs in 10–15% of all cases of CAT and carries a higher operative risk as described previously. Evidence indicates that the best outcomes are achieved using bypass management with two arterial cannulae to ensure equal perfusion and cooling of the entire circulation. Placement of a small Gore-Tex<sup>®</sup> shunt (W. L. Gore & Associates) on the innominate artery has been recommended because this allows better access for the cross-clamp and also can be used to deliver selective antegrade perfusion to the brain during arch repair. The interruption is most commonly type B. The techniques for arch repair are similar to those in other conditions with IAA and have most commonly been performed using a combination of a direct anastomosis with patch augmentation of the concavity of the reconstructed aortic arch. The use of a patch has the advantage that it may also be used for repair of the defect created by excising the PAs. Other authors have reported using direct anastomosis for IAA repair without a patch; the reported outcomes are similar with all techniques. The need for reoperation on the arch is rare (<10%).

#### *Palliative repair leaving the ventricular septal defect open*

This alternative approach has very few reported cases and no comparison with more standard approaches. The PAs are separated from the trunk and then connected to the RV with a valveless, small (typically 5–6 mm) Gore-Tex<sup>®</sup> tube (W. L. Gore & Associates),

thereby leaving the VSD open. The limited reports regarding this approach show that it is safe; however, there is no evidence to recommend its use over standard repair.<sup>153</sup>

#### *Reoperations*

Almost all patients with CAT will need reinterventions. Parents or caretakers should be informed about this situation from the beginning. Reinterventions should always be discussed by a multidisciplinary team, and a careful preoperative/preintervention work-up is mandatory.

#### *Truncal valve reoperation*

Reoperation is performed predominantly for TrV (now the neo-aortic valve) regurgitation. Stenosis is extremely rare. Typically, 20–25% of all patients with CAT will need a reoperation on the TrV. The majority of these patients will have undergone some sort of valve repair at the time of the definitive repair; freedom from reoperation in this group is approximately 50% at 5 years.<sup>111,122,137–140,142</sup> Repair techniques reflect the fact that these procedures are being performed in an older age group than the neonatal repairs and that the valves are typically retracted and distended from chronic regurgitation. Techniques include subcoronary annuloplasty, bicuspidization, leaflet extensions and commissural resuspension. There is insufficient evidence to recommend or compare different techniques for valve repair, but the limited series suggest that repair can be achieved in a considerable number of patients, with a trend towards the predominance of repair over replacement in recent years.<sup>140,141</sup> The valve is typically replaced with a mechanical prosthesis when repair is no longer possible.

When the aortic root diameter exceeds 55 mm later in life, surgical repair is generally indicated.<sup>64,65,164</sup>

#### *Right ventricular outflow tract reoperation*

The need for reintervention on the RVOT is likely to be inevitable in CAT, but the timing is influenced by the size and type of RVOT reconstruction used at the initial procedure. Lifelong follow-up of all patients with CAT is strongly recommended because the majority will need reintervention, usually on the RVOT. All conduits eventually become restrictive through a combination of degeneration and out-growth, with some limited evidence that conduit duration is best in pulmonary homografts, followed by aortic homografts and bovine jugular vein conduits. There are multiple studies of RV-PA conduits that include patients with CAT, but with insufficient evidence to recommend 1 conduit type over another at the time of reoperation. Larger conduits tend to perform better than smaller ones, and it is recommended that, at the first reoperation, the conduit should be at least 16 mm in diameter. The timing for conduit replacement is no different in CAT than in other situations and is based on a composite indication of raised RV pressures (>67% systemic pressure in the RV), impaired RV function and the development of exercise limitation associated with conduit stenosis or impaired function.<sup>112,113,146–148,152,155,157–160,165</sup> It has been reported that RV-PA conduits do not last as long in patients with CAT as in patients with other conditions.<sup>161</sup>

Patients with no conduit are likely to have longer freedom from reoperation than those with an RV-PA conduit (see *Reconstruction of the right ventricular outflow tract* above), but most will require reintervention due either to PR, to a degree of stenosis in the RVOT or to a combination of both.<sup>128,149</sup> The indications for intervention in PR are not well defined in CAT, and practice is determined by extrapolation of the indications in repaired tetralogy of Fallot,



based on indexed RV volumes and the development of symptoms. In equivocal cases, cardiopulmonary exercise testing may aid decision-making. Choice of RVOT replacement in these cases can be either with a homograft valved conduit or, in older children, with a valved xenograft in the pulmonary position accommodated by an outflow tract patch. Both techniques have been used with equal success.<sup>154,161</sup>

Overall, RVOT reoperation in CAT is safe and would be expected to have a low operative mortality.

### *Percutaneous reinterventions on right ventricular outflow tract, right ventricle-to-pulmonary artery conduits and pulmonary arteries*

Interventional therapies such as balloon dilatation and stent implantation can improve the lifespan of obstructed RV-to-PA conduits<sup>166–168</sup> and may therefore be reasonable in severely obstructed conduits.<sup>168</sup> Stent implantation proved to be safe,<sup>166,167</sup> even in smaller homograft conduits.<sup>168</sup> However, stenting of the conduit results in free PR with possible side effects such as RV dilatation, RV dysfunction and arrhythmias. Percutaneous pulmonary valve replacement was first reported nearly 20 years ago<sup>169</sup> and can now be considered as an alternative to surgical pulmonary valve replacement in selected patients.<sup>170,171</sup> For both stenting of the conduit and percutaneous pulmonary valve replacement, coronary artery compression testing is indicated.<sup>172–174</sup> In patients with additional lesions requiring intervention (e.g. tricuspid valve regurgitation, TrV regurgitation), surgical intervention is preferred. Multidisciplinary team discussion with a risk-benefit analysis, before interventional stent implantation or percutaneous pulmonary valve replacement, is recommended.

Patients with CAT are at risk of developing branch PA stenoses leading to RV pressure load and to differences in right and LPA blood flow.<sup>110,129,154</sup> Assessment of the significance of stenosis should include symptoms, echocardiographic findings and cross-sectional imaging data. Balloon dilatation and stenting of relevant branch pulmonary stenoses might be useful.<sup>172,175,176</sup>

### *Intraoperative assessment*

#### *Intraoperative transoesophageal echocardiography*

Intraoperative transoesophageal echocardiography (TOE) during or after surgery plays a major role in detecting residual lesions and is considered the standard in patients undergoing cardiac surgery.<sup>177,178</sup> The patient's minimum weight for using intraoperative TOE is typically 2.5 kg and caution is recommended in children who weight <3 kg.<sup>178</sup> The most important reporting elements in patients with CAT are listed in Table 17.<sup>82</sup>

Epicardial echocardiography has a role for patients in whom TOE cannot be used or in whom TOE does not provide sufficient visualization of particular cardiac structures. It has been demonstrated that epicardial echocardiography allows detection of the majority of residual lesions.<sup>179,180</sup> A disadvantage is that the transducer is placed directly on the heart, which can promote arrhythmias and haemodynamic compromise.<sup>177</sup>

### *Postoperative management in the intensive care unit*

The postoperative course after surgery for CAT can be complicated for many reasons. Pulmonary hypertension may occur, especially when surgery is performed later. Reactive pulmonary vasculature and pulmonary vascular obstructive disease are known to develop rapidly in CAT, and there is a relation between later timing of the

**Table 17.** Proposed standard intraoperative transoesophageal echocardiography and reporting elements.<sup>82</sup>

Standard views, TOE	Reporting elements
Midoesophageal 4-chamber view (0°)	Atrial septum and (residual) shunt(s), ventricular septum and (residual) defect(s), AV valves, pulmonary veins, biventricular size and function
Midoesophageal bicaval view (90°)	Atrial septum and (residual) shunt(s), assessment of the inferior and superior-vena cavae, right upper pulmonary vein
Aortic/pulmonary valve long-axis views (120°)	Truncal valve and (residual) lesions such as regurgitation or stenosis, ascending aorta, branch PAs and their origins from the CAT; after repair the RV-to-PA conduit and residual VSD(s) can be assessed
Aortic valve short-axis view (25–50°)	Truncal valve morphology including commissures and numbers of leaflets, regurgitation jets of the truncal valve
Right ventricular inflow and outflow view (~60°)	Tricuspid valve, right ventricular function and proximal RV-to-PA conduit
Transgastric views	Truncal valve and RV-to-PA conduit

AV = atrioventricular; CAT = common arterial trunk; Pas = pulmonary arteries; RV-to-PA conduit = right ventricle to pulmonary artery conduit; TOE = transoesophageal echocardiography; VSD = ventricular septal defect.

operation and pulmonary hypertensive complications postoperatively.<sup>90,91,181</sup> After the patient is weaned from cardiopulmonary bypass, the degree of pulmonary hypertension should be measured by intraoperative TOE (or epicardial echocardiography if the child is too small for TOE). The tricuspid valve Doppler gradient is recorded. When the central venous pressure is added, one has a reliable measurement of systolic RV pressure, which equals systolic PA pressure in the absence of a gradient between the RV and PAs. If RV pressure cannot be reliably recorded (e.g. when there is no tricuspid insufficiency), direct puncture of the RV (or RV to PA connection) may form an alternative.

If pulmonary hypertension prohibits weaning from cardiopulmonary bypass or if it results in supra- or near-systemic RV pressures, the recommendation is to administer respiratory nitric oxide at 20 ppm.<sup>182</sup> Usually cardiopulmonary bypass can be discontinued thereafter, and the patient can be transported to the paediatric ICU. Reactive pulmonary vasculature and pulmonary hypertensive crisis may be caused by pain, unrest and bronchial suction. Therefore, adequate analgesia and sedation are mandatory in the immediate postoperative period. The rebound effect of nitric oxide withdrawal on pulmonary hypertension can be countered by intravenous administration of sildenafil, which may be continued later in the oral form.<sup>182</sup> Phosphodiesterase inhibitors, such as milrinone, have been described to improve results after many types of neonatal operations<sup>107</sup> and are therefore also advised following CAT surgery. Noradrenaline can be combined with milrinone in the first postoperative phase. The chest may be left open for the first few days if haemodynamic instability is present or expected.

Both pulmonary hypertension and RVOT stenosis may lead to (supra-)systemic RV pressures and insufficient left ventricular filling, which in combination may cause rapid haemodynamic deterioration. Other residual defects must also be excluded and corrected before transportation to the ICU, including residual VSD, and more than mild tricuspid or TrV insufficiency.

High RV pressures and difficulty to wean the patient from cardiopulmonary bypass or an unstable course after arrival in

the ICU may also be the result of RVOT stenosis. This must be sought after aggressively and treated when present: stretching of the RPA and kinking of the LPA have been described and can be the consequence of stretching by a too-short or kinking by a too-long conduit. Excessive dead volume of a big conduit can impair haemodynamics, and conduit pulsatility may cause dynamic obstruction of the LPA. If echocardiography fails to lead to a diagnosis of the exact cause of elevated RV pressure, a CT scan and/or cardiac catheterization should be considered. Extracorporeal membrane oxygenation must be considered when conventional measures fail to have an adequate effect. It may also be helpful in providing sufficient haemodynamic stabilization to perform further diagnostic tests and (interventional) treatment when needed.

Adverse cardiac events are known to occur more frequently in patients with the 22q11.2 deletion. The duration of mechanical ventilation and the lengths of the ICU and hospital stays are reported to be longer.<sup>133</sup> Attention should be paid to hypocalcaemia and irradiation of blood products.<sup>95,102,103</sup>

## Postoperative assessment

### Early postoperative transthoracic echocardiogram

Recent studies have shown that early mortality rates following CAT repair have decreased significantly in the last decades since the first report in 1968 by McGoon *et al.*<sup>76,154,183,184</sup> However, early residual lesions may occur and can complicate the postoperative course and the early follow-up of patients with CAT.

TTE plays a major role in the immediate postoperative assessment of patients with CAT and should focus on evaluation of the RV-to-PA conduit and the PA branches, the anatomy and function of the TrV, the evaluation of the aortic arch in patients with IAA and the assessment of biventricular size and function.<sup>82</sup> Specifically, attention should be paid to conduit obstruction and regurgitation, branch PA stenosis and hypoplasia, residual VSDs, regurgitation and stenosis of the TrV to detect complications, which might need early intervention and to obtaining postoperative baseline results for serial follow-ups. Patients with IAA are at risk for aortic arch obstruction; therefore, assessment of the aortic arch should be part of the postoperative TTE.<sup>109,123</sup> In the postoperative course, pulmonary hypertension can have an impact on management in the ICU.<sup>79</sup> TTE should distinguish increased RV pressure caused by pulmonary hypertension from that from conduit or branch PA obstruction. Standard TTE views and reporting elements are listed in Table 18.

### Cardiovascular computed tomography and cardiovascular magnetic resonance imaging

Echocardiography is the first-line, standard imaging modality for immediate postoperative assessment.<sup>85</sup> Early postoperative assessment after surgical repair of CAT with CT or CMRI may be necessary in the context of poor echocardiographic windows to assess the reconstructed aortic arch in patients with IAA for obstruction or aneurysms, to evaluate the RV-to-PA conduit or to visualize the branch PAs.<sup>86,87</sup>

### Cardiac catheterization and angiography

Early catheter-based reinterventions on the branch PAs and the RV-to-PA conduit after CAT repair in the neonatal period or early infancy may be necessary.<sup>90,129</sup> These reinterventions can include balloon dilatation or stenting of the conduit or the PAs. Lund

**Table 18.** Proposed postoperative and follow-up transthoracic echocardiographic views and reporting elements.

Standard TTE views	Important reporting elements
Subcostal long- and short-axis	Atrial septum and residual shunts, assessment for RV-to-PA conduit obstruction or leak, assessment for branch PA hypoplasia or stenosis, function of the truncal valve, residual VSDs
Parasternal long- and short-axis	Morphology and function of the truncal valve, aortic root size, assessment for RV-to-PA conduit obstruction or leak, residual VSDs
Apical 4- and 5-chamber	Morphology and function of the truncal valve, biventricular function and size, residual VSDs, TR velocity to assess RV-to-PA conduit stenosis
Suprasternal long- and short-axis	Assessment for branch PA hypoplasia or stenosis, assessment of the aortic arch (especially after reconstruction in patients with IAA)

IAA = interrupted aortic arch; PA = pulmonary artery; RV-to-PA conduit = right ventricle to pulmonary artery conduit; TR = tricuspid regurgitation; TTE = transthoracic echocardiography; VSDs = ventricular septal defects.

*et al.*<sup>129</sup> reported that freedom from any RVOT or PA reintervention was 68±4% at 1 year and 48±5% at 2 years and that this result was mainly associated with a smaller conduit size. Catheter reinterventions for aortic arch stenosis in patients who had repair of an IAA may be necessary and typically occurred in the first 18 months after surgery, according to a recently published study.<sup>185</sup>

## Assessment during long-term follow-up

### Follow-up recommendations

Lifelong individualized follow-up of patients with CAT is recommended (see also Table 19).<sup>191</sup> In the first year after the operation, we suggest at least 3- to 6-month follow-up intervals and after that every 6–12 months.<sup>186,187</sup> Adults with CAT should be seen by cardiologists who specialize in adults with congenital heart disease in specialist centres, in which recommendations for follow-up and care can be made on an individual basis.<sup>165</sup> Patients with pulmonary arterial hypertension and patients with Eisenmenger syndrome should be managed accordingly.<sup>165,172,181,192</sup>

For children and adults with the 22q11.2 deletion syndrome, multidisciplinary management is advisable because it is a multisystem disorder that can also affect the endocrine, immune, haematological and musculoskeletal systems, as well as intelligence, mental health and other issues.<sup>193,194</sup>

### Clinical investigations

#### Clinical examination

Clinical evaluation should include oxygen saturation, blood pressure, arrhythmias, central venous pressure, heart murmurs and signs of heart failure. Findings related to the RV-to-PA conduit may include a precordial thrill, prominent A-wave of the jugular veins and a systolic murmur.<sup>165</sup> In patients with TrV regurgitation, a diastolic decrescendo murmur can be heard, and bounding peripheral pulses may be present. A chest X-ray may reveal RV-to-PA conduit calcification.<sup>165</sup>

#### Electrocardiogram and 24-h ambulatory Holter monitoring

In the long-term follow-up of patients with CAT, a 12-lead ECG is part of the routine baseline diagnostic examination, especially in

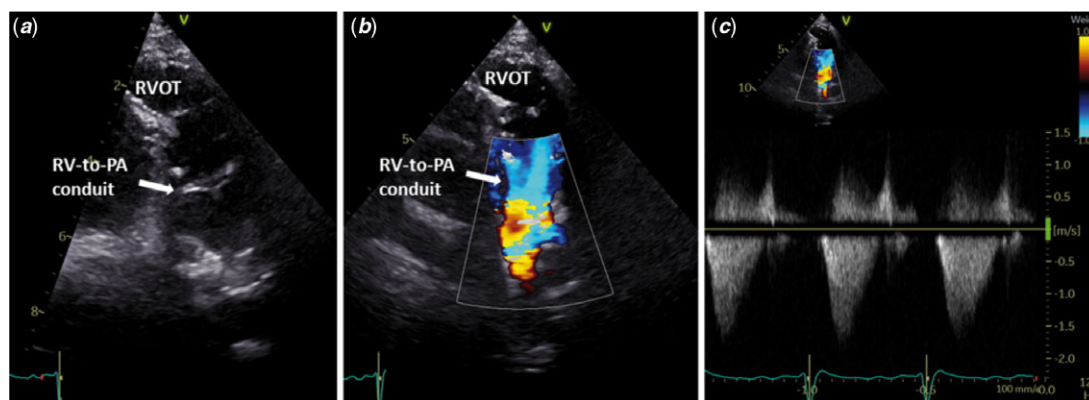
**Table 19.** Follow-up recommendations.

Follow-up recommendation		Level <sup>a</sup>	Class <sup>b</sup>	References
Follow-up intervals in the first year after surgical repair	3–6 months	C	I	186
Follow-up after the first year after surgery	6 months–1 year	C	I	186,187
Adult patients	Follow-up guided by specialist centres and cardiologists trained in ACHD	B	I	172
ECG and TTE	Routine examination during every follow-up visit	C	I	186,187
Ambulatory Holter monitoring	On individualized basis	C	II	186,187
CMRI	Every 3–5 years in patients 10 years of age and older. In patients younger than 10 years, CMRI is recommended when there is a concern for unfavourable disease progression and echocardiographic data are insufficient	C	I	87,186,187
CPET	Every 3 years in patients $\geq 8$ years of age	C	II	186,187
Cardiac catheterization	When surgical or interventional treatment is considered	C	II	123,165–167,188–190

ACHD = adults with congenital heart disease; CMRI = cardiovascular magnetic resonance imaging; CPET = cardiopulmonary exercise testing; ECG = electrocardiogram; TTE = transthoracic echocardiography.

<sup>a</sup>Level of evidence.

<sup>b</sup>Class of recommendation.



**Figure 5.** Two-dimensional transthoracic echocardiogram illustrating the RV-to-PA conduit. (a) Colour-guided and Doppler echocardiography shows good RV-to-PA conduit function (b and c) PA = pulmonary artery; RV = right ventricle; RVOT = right ventricular outflow tract.

those patients who are on antiarrhythmic treatment.<sup>187,195</sup> It is assumed that the arrhythmia burden and the risk for sudden cardiac death are similar to those in patients with tetralogy of Fallot with increased risk if the TrV is abnormal.<sup>195</sup> Many patients have a bundle branch block, with a right bundle branch block being the most common finding.<sup>132</sup> Attention should be paid to signs of right or left ventricular hypertrophy and/or dilatation, change in intra-ventricular conduction and pressure overload.

Twenty-four hour ambulatory Holter monitoring should be performed when indicated (Table 19).<sup>191</sup> The frequency in adults should be individualized depending on the suspicion of arrhythmias and clinical findings (need for reoperation, progressive haemodynamic problems).<sup>165,196</sup>

#### Transthoracic echocardiography

The consensus is that TTE is the primary non-invasive imaging modality and should be included in every follow-up visit (Table 18).<sup>85</sup> The echocardiographic evaluation of repaired CAT includes assessment of the RV-to-PA conduit (Fig. 5), PAs, the anatomy and function of the TrV (substrate of TrV regurgitation), aortic root size, residual VSD, biventricular function and right

ventricular systolic pressure from tricuspid valve regurgitation velocity to assess conduit stenosis. Evaluation of the anatomy of the aortic arch is particularly important in patients who had repair of IAA.

Similar to the situation in patients with tetralogy of Fallot or other congenital heart diseases, detailed visualization of the RV and its outflow tract, as well as of the PAs, is often limited by restricted acoustic windows, which can become even worse in adolescence and adulthood.<sup>197</sup> Furthermore, quantitative assessment of the RV with its complex geometry and valve regurgitation can be challenging, typically requiring the complementary use of CMRI.<sup>197,198</sup> Three-dimensional echocardiography allows highly repeatable quantification of right and left ventricular volumes and the ejection fraction but also depends on the acoustic window and produces lower volume measurements compared with CMRI.<sup>84,199</sup>

#### Cardiovascular magnetic resonance imaging

CMRI plays an increasing role in the long-term follow-up of patients with congenital heart disease. It is the reference standard modality for biventricular volume and mass assessment and is well suited for life-long repeated follow-up studies.<sup>198,200,201</sup> CMRI cine imaging and angiographic techniques are valuable in visualization



**Table 20.** Proposed CMRI measurements and reporting elements.<sup>196</sup>

Important reporting elements
LV and RV volumes (absolute and BSA indexed end diastolic and systolic volumes), ejection fraction, stroke volume, mass (absolute mass and BSA indexed), regional wall motion abnormalities. Tricuspid valve regurgitation
RV-to-PA conduit obstruction or regurgitation (regurgitant fraction and volume)
PA anatomy and dimensions. Differential RPA and LPA blood flows, if narrowing of the branch PAs is present
Truncal valve obstruction, regurgitation (regurgitant fraction and volume) and morphology
Aortic root, ascending aorta and aortic arch dimensions. Aortic arch obstruction in patients with IAA
Pulmonary to systemic flow ratio (Qp/Qs)
First CMRI examination, clinical deterioration; LGE, presence and extent

BSA = body surface area; CMRI = cardiovascular magnetic resonance imaging; IAA = interrupted aortic arch; LGE = late gadolinium enhancement; LPA = left pulmonary artery; LV = left ventricle; Pas = pulmonary arteries; RPA = right pulmonary artery; RV = right ventricle; RV-to-PA conduit = right ventricle to pulmonary artery conduit.

of the RV-to-PA conduit or connection and of the PAs, which may become stenotic after CAT repair.<sup>87,202</sup> Furthermore, residual VSDs, the TrV anatomy and the aortic arch can easily be visualized. Phase-contrast CMRI allows quantification of the RV-to-PA conduit and TrV regurgitation and enables measurement of peak velocities across the TrV and conduit. For patients with residual VSDs, the shunt (Qp/Qs) can be quantified with flow measurements above the TrV and in the RV-to-PA conduit.<sup>203</sup> Viability imaging using the late gadolinium enhancement technique is able to detect myocardial fibrosis. In patients with tetralogy of Fallot, the presence of myocardial fibrosis was related to adverse clinical markers, such as ventricular dysfunction and exercise intolerance.<sup>204,205</sup>

The timing of CMRI in patients after CAT repair depends on the clinical course and findings. In patients younger than 10 years of age, CMRI is recommended when there is a concern about unfavourable disease progression and echocardiographic data are insufficient to answer the clinical question (Table 19).<sup>197</sup> In adolescent and adult patients with stable clinical and echocardiographic findings, follow-up with CMRI is recommended every 3–5 years in stable patients and every 12 months in patients with progressive findings (progressive RV/left ventricular dilatation or dysfunction) or when reoperation is being considered.<sup>197</sup> Late gadolinium enhancement imaging should be performed at the time of the first CMRI examination and when there is clinical deterioration.<sup>206</sup> Table 20 illustrates the proposed measurements and reporting elements.

### Computed tomography

CT is an imaging modality that is well suited for the anatomical evaluation of the RV-to-PA conduit, the branch PAs, the aortic arch and the aortic root, especially if echocardiography is not sufficient.<sup>86,207</sup> In patients with contraindications for CMRI, CT can provide comparable information regarding ejection fraction and ventricular volumes.<sup>86,208,209</sup> CT is the modality of choice for coronary assessment before reoperations or reinterventions and is able to provide detailed information about coronary origins, course and relationship to the great vessels.<sup>86,197</sup>

**Table 21.** Recommendation for vasodilator therapy.

Recommendation for vasodilator therapy	Level <sup>a</sup>	Class <sup>b</sup>	References
Vasodilator therapy can be useful in patients with CAT and truncal valve regurgitation	B	I	212,215

CAT = common arterial trunk.

<sup>a</sup>Level of evidence.

<sup>b</sup>Class of recommendation.

### Cardiac catheterization and (coronary) angiography

In adult patients with a history of ischaemic heart disease, 1 or more cardiovascular risk factors, suspected ischaemia, male patients >40 years of age and postmenopausal female patients, or in case of another indication for preoperative cardiac catheterization, coronary angiography is recommended before surgery.<sup>188</sup>

Cardiac catheterization with haemodynamic assessment can be of use when surgical or interventional treatment is considered.<sup>165</sup>

Endovascular stenting of obstructed RV-to-PA conduits has been shown to decrease RV pressure and prolong conduit lifespan.<sup>166,167</sup>

Transcatheter pulmonary valve replacement is a less invasive method compared with repeat open-heart surgery for dysfunctional RV-to-PA conduits in older patients (>5 years of age, >20 kg), and recent data show good short- and longer-term results.

In a U.S. trial, 15 out of 150 patients who received a Melody valve (Medtronic) had CAT.<sup>189,190</sup> Catheterization with manometry is often the method of choice if aortic arch obstruction is suspected and offers the possibility of balloon aortic arch angioplasty or a stent implant.<sup>123</sup>

### Cardiopulmonary exercise testing

In adults with congenital heart disease, exercise intolerance is common and associated with increased risk of hospitalization and death.<sup>210</sup> For patients after CAT repair, reduced exercise capacity has also been demonstrated.<sup>132</sup> The consensus is that cardiopulmonary exercise testing should be introduced into the diagnostic work-up when the patient is able to do the test (from 8 years of age upwards) and should be performed on a regular basis during long-term follow-up (Table 19).

### Late management of residual or new lesions

#### Management of truncal valve regurgitation

TrV incompetence is a frequent finding in patients with CAT during follow up due to dysplasia and anatomical variations of the valve.<sup>139</sup> Similarly to other patient groups, patients with CAT with TrV regurgitation should be monitored closely.<sup>211</sup> The indication for vasodilator therapy in TrV regurgitation is unclear. In a small paediatric study, which included a few patients with CAT, no significant effect of angiotensin-converting enzyme inhibitors on left ventricular dilatation or function was found.<sup>212</sup> Studies in adult patients with chronic aortic regurgitation have reported controversial results,<sup>213,214</sup> and 1 recent meta-analysis indicated that vasodilators had a favourable effect on left ventricular remodelling (Table 21).<sup>215</sup>

General consensus regarding timing of surgical TrV treatment is lacking. However, for patients with moderate-to-severe TrV incompetence, surgical treatment should be considered, especially when symptoms or a positive exercise test co-exist.<sup>140,188</sup>

### Truncal root dilatation

The truncal root is commonly dilated in patients with CAT, which is probably related to intrinsic structural vessel wall abnormalities.<sup>64,216</sup> Carlo *et al.*<sup>64,65,217</sup> showed that patients with severe TrV regurgitation have a higher truncal root z-score; however, the risk for complications such as aortic dissection is rare. Assessment of the size of the aortic root with echocardiography is recommended during follow up and should be complemented by CMRI or CT if surgical aortic intervention is considered or the echocardiographic windows are poor.<sup>164,218</sup> Surgical repair is generally indicated when the aortic size exceeds 55 mm.<sup>64,65,164</sup>

### Right ventricular outflow tract obstruction

According to current guidelines, RVOT obstruction at any level should be repaired regardless of symptoms when the Doppler peak gradient is >64 mmHg (peak velocity >4 m/s), provided that RV function is normal and no valve substitute is required.

In asymptomatic patients in whom balloon valvotomy is ineffective and surgical valve replacement is the only option, surgery should be performed in the presence of a systolic RV pressure >80 mmHg (tricuspid regurgitation velocity > 4.3 m/s). Intervention in patients with a gradient <64 mmHg should be considered in the presence of the following:

- Symptoms related to pulmonary stenosis, or
- Decreased RV function, or
- Double-chambered RV (which is usually progressive), or
- Important arrhythmias, or
- Right-to-left shunting via an atrial septal defect or VSD.<sup>165</sup>

### Endocarditis prophylaxis

Infective endocarditis is a serious complication. Patients with CAT are at high-risk of developing infective endocarditis mainly due to implanted prosthetic valves in the pulmonary position (RV-to- PA conduit) or prosthetic material used for pulmonary valve repair.<sup>165,219</sup> According to current guidelines, antibiotic infective endocarditis prophylaxis is recommended in all types of cyanotic congenital heart diseases, thus encompassing all patients with unrepaired CAT. It is also recommended in patients repaired with a prosthetic material, whether placed surgically or by percutaneous techniques, up to 6 months after the procedure or lifelong if a residual shunt or valvular regurgitation remains, which is applicable to the majority of patients with CAT after repair.<sup>219</sup> Patients should also be encouraged to have regular dental examinations and to maintain good oral hygiene.<sup>165,219</sup>

### Exercise and sport

No specific recommendations for patients after CAT repair exist. However, physical activity has a known benefit for fitness and social integration.<sup>165,191</sup>

In general, clinical assessment before sport recommendation should be performed.<sup>220</sup> For children with congenital heart disease, sport eligibility screening was suggested, latest at a preschool age.<sup>53</sup> In addition to a detailed history and cardiology investigations including TTE, ECG and a Holter ECG, formal exercise testing (preferably cardiopulmonary exercise testing) is often indicated.<sup>191,220,221</sup> Detailed recommendations should be made on an individualized basis and should consider the patient's morbidities, which may include arrhythmias, ventricular dysfunction, pulmonary hypertension or pulmonary vascular obstructive disease, severity of residual lesions, oxygen saturation, aortic dilatation, anticoagulation and implanted devices.<sup>191,221</sup>

**Table 22.** Recommendations for prepregnancy counselling and care during pregnancy.

Recommendation for prepregnancy-counselling and care during pregnancy	Level <sup>a</sup>	Class <sup>b</sup>	References
Women with CAT should receive prepregnancy counselling, including risk assessment, on an individualized basis	C	I	223,225-227
Care during pregnancy and delivery and in the post-partum period should involve a multidisciplinary team, including a cardiologist trained in adult congenital heart disease, cardiac surgeons, obstetricians, anaesthetists and neonatologists	C	I	223,225,227

CAT = common arterial trunk.

<sup>a</sup>Level of evidence.

<sup>b</sup>Class of recommendation.

### Pregnancy

Preconception counselling is important, and the issues surrounding pregnancy, contraception and family planning should already have been addressed in adolescence.<sup>222</sup> All women with repaired CAT should be offered prepregnancy risk assessment and counselling as well as genetic counseling.<sup>222,223</sup> Patients with Eisenmenger syndrome who have not undergone repair have a high maternal mortality.<sup>224</sup> In accordance with the European Society of Cardiology guidelines on the management of cardiovascular diseases during pregnancy, we recommend using the modified World Health Organization classification of pregnancy risk to assess risk.<sup>223,225</sup>

Care during pregnancy and delivery and in the post-partum period should involve a multidisciplinary team, including a cardiologist trained in adult congenital heart disease, cardiac surgeons, obstetricians, anaesthetists and neonatologists. Individualized care plans documenting follow-up schedules during pregnancy and the post-partum period, as well as the preferred mode of delivery, are useful (Table 22).

### Outcomes

Surgical repair of CAT is major surgery. It is to be expected that all patients who survive the initial repair will need 1 or more reoperations and/or catheter interventions in the future. Additional lesions, such as IAA and dysfunction of the TrV, need associated surgical repair and carry additional risks.

Looking at the outcomes in the congenital cardiac surgical databases, we found a total of 1569 patients with CAT repair in the European Congenital Heart Surgeons Association Database and a hospital mortality of 15.8%. The number of patients with CAT and associated IAA repair was 61, having a hospital mortality of 9.8%.<sup>228</sup> A report from the Society of Thoracic Surgeons Congenital Heart Surgery Database shows an operative mortality of 9.5% in 602 CAT repairs in the period January 2014 through December 2017.<sup>184</sup>

Importantly, mortality following CAT repair has decreased over the years, as has been reported by the aforementioned databases and also by Tlaskal *et al.*<sup>154</sup> In a review of 83 patients operated on between 1981 and 2009, mortality was 46% between 1981 and 1996 and only 4% between 1997 and 2009. A total of 14 patients with IAA repair and 8 patients with TrV repair were included in this series.

Simultaneous repair of IAA and/or TrV dysfunction carries an extra risk of death, as was shown in a 2012 update from the Society of Thoracic Surgeons Congenital Heart Surgery Database where, in the period between 2000 and 2009, a total of 572 CAT repairs were reported with a hospital mortality of 10% when CAT repair was isolated, 30% when associated with TrV repair and 24% when associated with IAA repair. When CAT repair was performed with both IAA and TrV surgery, mortality was 60%.<sup>111</sup>

Long-term survival is reported to be 73.6% after 30 years by the Melbourne group. Freedom from RVOT-related reoperation at 20 years was 4.6%.<sup>76</sup>

**Conflict of interest.** None declared.

**Author contributions.** **Mark Hazekamp:** Conceptualization; Data curation; Formal analysis; Investigation; Methodology; Project administration; Supervision; Writing-original draft; Writing-review & editing. **David Barron:** Conceptualization; Formal analysis; Investigation; Methodology; Writing-original draft; Writing-review & editing. **Joanna Dangel:** Conceptualization; Formal analysis; Investigation; Methodology; Writing-original draft; Writing-review & editing. **Tessa Homfray:** Conceptualization; Formal analysis; Investigation;

Methodology; Writing-original draft; Writing-review & editing. **Monique Jongbloed:** Conceptualization; Formal analysis; Investigation; Methodology; Writing-original draft; Writing-review & editing. **Inga Voges:** Conceptualization; Formal analysis; Investigation; Methodology; Project administration; Writing-original draft; Writing-review & editing.

## References

- Sousa-Uva M, Head SJ, Thielmann M, et al. Methodology manual for European Association for Cardio- Thoracic Surgery (EACTS) clinical guidelines. *Eur J Cardiothorac Surg* 2015; 48: 809–816.
- Ta-Shma A, Pierri CL, Stepensky P, et al. Isolated truncus arteriosus associated with a mutation in the plexin-D1 gene. *Am J Med Genet A* 2013; 161: 3115–3120.
- Collet RW, Edwards JE. Persistent truncus arteriosus; a classification according to anatomic types. *Surg Clin North Am* 1949; 29: 1245–1270.
- Van Praagh R, Van Praagh S. The anatomy of common aorticopulmonary trunk (truncus arteriosus communis) and its embryologic implications. A study of 57 necropsy cases. *Am J Cardiol* 1965; 16: 406–425.
- Calder L, Van Praagh R, Van Praagh S, et al. Truncus arteriosus communis. Clinical, angiocardiographic and pathologic findings in 100 patients. *Am Heart J* 1976; 92: 23–38.
- Orphanet. Truncus arteriosus; Version 5.36.0, 2020. Retrieved November 21, 2020, from [http://www.orpha.net/consor/cgi-bin/OC\\_Exp.php?Lng=GB&Expert=3384](http://www.orpha.net/consor/cgi-bin/OC_Exp.php?Lng=GB&Expert=3384)
- Lindinger A, Schwedler G, Hense HW. Prevalence of congenital heart defects in newborns in Germany: results of the first registration year of the PAN Study (July 2006 to June 2007). *Klin Padiatr* 2010; 222: 321–326.
- Volpe P, Paladini D, Marasini M, et al. Common arterial trunk in the fetus: characteristics, associations, and outcome in a multicentre series of 23 cases. *Heart* 2003; 89: 1437–1441.
- Boudjemline Y, Fermon L, Le Bidois J, et al. Prenatal diagnosis of conotruncal heart diseases. Results in 337 cases. *Arch Mal CoeurVaiss* 2000; 93: 583–536.
- Pierpont ME, Gobel JW, Moller JH, Edwards JE. Cardiac malformations in relatives of children with truncus arteriosus or interruption of the aortic arch. *Am J Cardiol* 1988; 61: 423–427.
- Yamagishi H. Human genetics of truncus arteriosus. In: Rickert-Sperling S, Kelly R, Driscoll D (eds). *Congenital Heart Diseases: The Broken Heart*. Springer, Vienna, 2016: 559–567.
- Nora JJ, Nora AH. The evolution of specific genetic and environmental counseling in congenital heart disease. *Circulation* 1978; 57: 205–213.
- Patel A, Costello JM, Backer CL, et al. Prevalence of noncardiac and genetic abnormalities in neonates undergoing cardiac operations: analysis of the Society of Thoracic Surgeons Congenital Heart Surgery Database. *Ann Thorac Surg* 2016; 102: 1607–1614.
- Ferencz C, Correa-Villasenor A, Loffredo CA (eds). *Genetic and Environmental Risk Factors of Major Cardiovascular Malformations: The Baltimore-Washington Infant Study: 1981–1989*. Futura Publishing Co., Armonk, 1997.
- Iserin L, de Lonlay P, Viot G, et al. Prevalence of the microdeletion 22q11 in newborn infants with congenital conotruncal cardiac anomalies. *Eur J Pediatr* 1998; 157: 881–884.
- Momma K, Ando M, Matsuoka R. Truncus arteriosus communis associated with chromosome 22q11 deletion. *J Am Coll Cardiol* 1997; 30: 1067–1071.
- Digilio MC, Marino B, Giannotti A, Mingarelli R, Dallapiccola B. Guidelines for 22q11 deletion screening of patients with conotruncal defects. *J Am Coll Cardiol* 1999; 33: 1746–1748.
- Goldmuntz E, Clark BJ, Mitchell LE, et al. Frequency of 22q11 deletions in patients with conotruncal defects. *J Am Coll Cardiol* 1998; 32: 492–498.
- Marino B, Digilio M, Toscano A. Common arterial trunk, DiGeorge syndrome and microdeletion 22q11. *Prog Pediatr Cardiol* 2002; 15: 9–17.
- Moscano A, Marino B, Digilio MC, et al. Truncus arteriosus with discontinuity of the pulmonary arteries and DiGeorge phenotype G. *Ital Cardiol* 1998; 28: 7.
- Marino B, Digilio MC, Dallapiccola B. Severe truncal valve dysplasia: association with DiGeorge syndrome? *Ann Thorac Surg* 1998; 66: 980.
- Digilio MC, Angioni A, De Santis M, et al. Spectrum of clinical variability in familial deletion 22q11.2: from full manifestation to extremely mild clinical anomalies. *Clin Genet* 2003; 63: 308–313.
- Sherer DM, Dalloul M, Pinard V, Sheu J, Abulafia O. Fetal trisomy 8 mosaicism associated with truncus arteriosus Type I. *Ultrasound Obstet Gynecol* 2017; 50: 541–542.
- Shaheen R, Al Hashem A, Alghamdi MH, et al. Positional mapping of PRKD1, NRP1 and PRDM1 as novel candidate disease genes in truncus arteriosus. *J Med Genet* 2015; 52: 322–329.
- Chao CS, McKnight KD, Cox KL, Chang AL, Kim SK, Feldman BJ. Novel GATA6 mutations in patients with pancreatic agenesis and congenital heart malformations. *PLoS One* 2015; 10: e0118449.
- Huang RT, Wang J, Xue S, et al. TBX20 loss-of-function mutation responsible for familial tetralogy of Fallot or sporadic persistent truncus arteriosus. *Int J Med Sci* 2017; 14: 323–332.
- Wilson JA. A description of a very unusual formation of the human heart. *Philos Trans R Soc L* 1998; 18: 346.
- Buchanan A. Malformation of the heart: undivided truncus arteriosus. *Trans Pathol Soc L* 1964; 89: 1864.
- Crupi G, Macartney FJ, Anderson RH. Persistent truncus arteriosus. A study of 66 autopsy cases with special reference to definition and morphogenesis. *Am J Cardiol* 1977; 40: 569–578.
- Anderson RH, Chaudhry B, Mohun TJ, et al. Normal and abnormal development of the intrapericardial arterial trunks in man and mouse. *Cardiovasc Res* 2012; 95: 108–115.
- Bartelings MM, Gittenberger-de Groot AC. Morphogenetic considerations on congenital malformations of the outflow tract. Part 1: common arterial trunk and tetralogy of Fallot. *Int J Cardiol* 1991; 32: 213–230.
- Jacobs ML, Anderson RH. Rationalising the nomenclature of common arterial trunk. *Cardiol Young* 2012; 22: 639–646.
- Bartelings MM, Gittenberger-de Groot AC. Morphogenetic considerations on congenital malformations of the outflow tract. Part 2: complete transposition of the great arteries and double outlet right ventricle. *Int J Cardiol* 1991; 33: 5–26.
- Anderson RH, Webb S, Brown NA, Lamers W, Moorman A. Development of the heart: (3) formation of the ventricular outflow tracts, arterial valves, and intrapericardial arterial trunks. *Heart* 2003; 89: 1110–1118.
- Kirby ML, Gale TF, Stewart DE. Neural crest cells contribute to normal aorticopulmonary septation. *Science* 1983; 220: 1059–1061.
- Poelmann RE, Mikawa T, Gittenberger-de Groot AC. Neural crest cells in outflow tract septation of the embryonic chicken heart: differentiation and apoptosis. *Dev Dyn* 1998; 212: 373–384.
- Poelmann RE, Gittenberger-de Groot AC, Biermans MWM, et al. Outflow tract septation and the aortic arch system in reptiles: lessons for understanding the mammalian heart. *EvoDevo* 2017; 8: 9.



38. Anderson RH, Mohun TJ, Spicer DE, et al. Myths and realities relating to development of the arterial valves. *J Cardiovasc Dev Dis* 2014; 1: 177–200.
39. Gittenberger-de Groot AC, Bartelings MM, Bogers JJC, Boot MJ, Poelmann RE. The embryology of common arterial trunk. *Prog Pediatr Cardiol* 2002; 15: 1–8.
40. Conway SJ, Henderson DJ, Kirby ML, Anderson RH, Copp AJ. Development of a lethal congenital heart defect in the splotch (Pax3) mutant mouse. *Cardiovasc Res* 1997; 36: 163–173.
41. Gruber PJ, Kubalak SW, Pexieder T, Sucov HM, Evans RM, Chien KR. RXR alpha deficiency confers genetic susceptibility for aortic sac, conotruncal, atrioventricular cushion, and ventricular muscle defects in mice. *J Clin Invest* 1996; 98: 1332–1343.
42. Baardman ME, Zwier MV, Wisse LJ, et al. Common arterial trunk and in Lrp2 knock out mice indicate a crucial role of LRP2 in cardiac development. *Dis Model Mech* 2016; 9: 413–425.
43. Feiner L, Webber AL, Brown CB, et al. Targeted disruption of semaphorin 3C leads to persistent truncus arteriosus and aortic arch interruption. *Development* 2001; 128: 3061–3070.
44. Parisot P, Mesbah K, Théveniau-Ruissy M, Kelly RG. Tbx1, subpulmonary myocardium and conotruncal congenital heart defects. *Birth Defects Res Clin Mol Teratol* 2011; 91: 477–484.
45. Jacobs ML. Congenital heart surgery nomenclature and database project: truncus arteriosus. *Ann Thorac Surg* 2000; 69: S50–S55.
46. Russell HM, Jacobs ML, Anderson RH, et al. A simplified categorization for common arterial trunk. *J Thorac Cardiovasc Surg* 2011; 141: 645–653.
47. Gumbiner CH, McManus BM, Latson LA. Associated occurrence of persistent truncus arteriosus and asplenia. *Pediatr Cardiol* 1991; 12: 192–195.
48. Marino B, Ballerini L, Soro A. Ventricular inversion with truncus arteriosus. *Chest* 1990; 98: 239–241.
49. Smith A, McKay R. Common arterial trunk with discordant atrioventricular connections. *Cardiol Young* 2000; 10: 145–146.
50. Bogers AJJC, Bartelings MM, Bökenkamp R, et al. Common arterial trunk, uncommon coronary arterial anatomy. *J Thorac Cardiovasc Surg* 1993; 106: 1133–1137.
51. Adachi I, Seale A, Uemura H, McCarthy KP, Kimberley P, Ho SY. Morphologic spectrum of truncal valvar origin relative to the ventricular septum: correlation with the size of ventricular septal defect. *J Thorac Cardiovasc Surg* 2009; 138: 1283–1289.
52. Adachi I, Uemura H, McCarthy KP, Seale A, Ho SY. Relationship between orifices of pulmonary and coronary arteries in common arterial trunk. *Eur J Cardiothorac Surg* 2009; 35: 594–599.
53. Freedom RM, Yoo S. Common arterial trunk. In: Freedom RM, Yoo SJ, Mikailian H, Williams WG (eds). *The Natural and Modified History of Congenital Heart Disease*. Futura, Blackwell, Elmsford, NY, 2004: 56–63.
54. Baggen VJM, Connely MS, Roos-Hesselink JW. Truncus arteriosus. In: Gatzoulis MA, Webb GD, Daubeney PE (eds). *Diagnosis and Management of Adult Congenital Heart Disease*, 3rd edn. Elsevier, Amsterdam, The Netherlands, 2018: 421–428.
55. Adachi I, Ho SY, Bartelings MM, McCarthy KP, Seale A, Uemura H. Common arterial trunk with atrioventricular septal defect: new observations pertinent to repair. *Ann Thorac Surg* 2009; 87: 1495–1499.
56. Suzuki A, Ho SY, Anderson RH, Deanfield JE. Coronary arterial and sinusal anatomy in hearts with a common arterial trunk. *Ann Thorac Surg* 1989; 48: 792–797.
57. Butto F, Lucas RV Jr, Edwards JE. Persistent truncus arteriosus: pathologic anatomy in 54 cases. *Pediatr Cardiol* 1986; 7: 95–101.
58. Rossiter SJ, Silverman JF, Shumway NE. Patterns of pulmonary arterial supply in patients with truncus arteriosus. *J Thorac Cardiovasc Surg* 1978; 75: 73–79.
59. Oddens JR, Bogers AJ, Witsenburg M, Bartelings MM. Anatomy of the proximal coronary arteries as a risk factor in primary repair of common arterial trunk. *J Cardiovasc Surg* 1994; 35: 295–299.
60. Veltman CE, Beeres SLMA, Kalkman DN, et al. Variation in coronary anatomy in adult patients late after arterial switch operation: a computed tomography coronary angiography study. *Ann Thorac Surg* 2013; 96: 1390–1397.
61. Anderson KR, McGoan DC, Lie JT. Surgical significance of the coronary arterial anatomy in truncus arteriosus communis. *Am J Cardiol* 1978; 41: 76–81.
62. Daskalopoulos DA, Edwards WD, Driscoll DJ, Schaff HV, Danielson GK. Fatal pulmonary artery banding in truncus arteriosus with anomalous origin of circumflex coronary artery from right pulmonary artery. *Am J Cardiol* 1983; 52: 1363–1364.
63. Angelini P, Leachman RD. Truncus-conal septal defects. An anatomic and embryologic discussion of common truncus and related malformations. *Eur J Cardiol* 1974; 2: 11–22.
64. Carlo WF, McKenzie ED, Slesnick TC. Root dilation in patients with truncus arteriosus. *Congenit Heart Dis* 2011; 6: 228–233.
65. Gutierrez PS, Binotto MA, Aiello VD, Mansur AJ. Chest pain in an adult with truncus arteriosus communis. *Am J Cardiol* 2004; 93: 272–273.
66. Momma K, Matsuoka R, Takao A. Aortic arch anomalies associated with chromosome 22q11 deletion (CATCH 22). *Pediatr Cardiol* 1999; 20: 97–102.
67. Sairam S, Carvalho JS. Early fetal echocardiography and anomaly scan in fetuses with increased nuchal translucency. *Early Hum Dev* 2012; 88: 269–272.
68. Carvalho JS. Screening for heart defects in the first trimester of pregnancy: food for thought. *Ultrasound Obstet Gynecol* 2010; 36: 658–660.
69. Jicinska H, Vlasin P, Jicinsky M, et al. Does first-trimester screening modify the natural history of congenital heart disease? Analysis of outcome of regional cardiac screening at 2 different time periods. *Circulation* 2017; 135: 1045–1055.
70. Duke C, Sharland GK, Jones AM, Simpson JM. Echocardiographic features and outcome of truncus arteriosus diagnosed during fetal life. *Am J Cardiol* 2001; 88: 1379–1384.
71. Huhta JC. Diagnosis and treatment of foetal heart failure: foetal echocardiography and foetal hydrops. *Cardiol Young* 2015; 25: 100–106.
72. Karl K, Heling KS, Sarut Lopez A, Thiel G, Chaoui R. Thymic-thoracic ratio in fetuses with trisomy 21, 18 or 13. *Ultrasound Obstet Gynecol* 2012; 40: 412–417.
73. Traisisilp K, Tongprasert F, Srisupundit K, Luewan S, Sukpan K, Tongsong T. Prenatal differentiation between truncus arteriosus (Types II and III) and pulmonary atresia with ventricular septal defect. *Ultrasound Obstet Gynecol* 2015; 46: 564–570.
74. Allan L, Dangel J, Fesslova V, et al.; Fetal Cardiology Working Group; Association for European Paediatric Cardiology. Recommendations for the practice of fetal cardiology in Europe. *Cardiol Young* 2004; 14: 109–114.
75. Peyvandi S, Lupo P, Garbarini J, et al. 22q11.2 deletions in patients with conotruncal defects: data from 1,610 consecutive cases. *Pediatr Cardiol* 2013; 34: 1687–1694.
76. Naimo PS, Fricke TA, Yong MS, et al. Outcomes of truncus arteriosus repair in children: 35 years of experience from a single institution. *Semin Thorac Cardiovasc Surg* 2016; 28: 500–511.
77. Hellström-Westas L, Hansens K, Jögi P, Lundström NR, Svenningsen N. Long-distance transports of newborn infants with congenital heart disease. *Pediatr Cardiol* 2001; 22: 380–384.
78. Costello JM, Pasquali SK, Jacobs JP, et al. Gestational age at birth and outcomes after neonatal cardiac surgery: an analysis of the Society of Thoracic Surgeons (STS) Congenital Heart Surgery Database. *Circulation* 2014; 129: 2511–2517.
79. Shamszad P, Moore RA, Ghanayem N, Cooper DS. Intensive care management of neonates with d-transposition of the great arteries and common arterial trunk. *Cardiol Young* 2012; 22: 755–760.
80. Colon M, Anderson RH, Weinberg P, Mussatto K, Bove E, Friedman AH. Anatomy, morphogenesis, diagnosis, management, and outcomes for neonates with common arterial trunk. *Cardiol Young* 2008; 18: 52–62.
81. Penny D, Anderson RH. Common arterial trunk. In: Andersen RH, Baker EJ, Penny D, Redington AN, Rigby ML, Wernovski G (eds). *Pediatric Cardiology*. Churchill Livingstone, Philadelphia, 2010: 859–874.
82. Yoo S, Kim YM, Bae EJ, et al. Cardiac imaging in common arterial trunk. *Prog Pediatr Cardiol* 2002; 15: 41–51.

83. Nguyen T, John JB, Nardell K, Gonzalez JH, Timofeev S, Marx G. Echocardiography of common arterial trunk. *Cardiol Young* 2012; 22: 655–663.
84. Simpson J, Lopez L, Acar P, et al. Threedimensional echocardiography in congenital heart disease: an expert consensus document from the European Association of Cardiovascular Imaging and the American Society of Echocardiography. *J Am Soc Echocardiogr* 2017; 30: 1–27.
85. Prakash A, Powell AJ, Geva T. Multimodality noninvasive imaging for assessment of congenital heart disease. *Circ Cardiovasc Imaging* 2010; 3: 112–125.
86. Han BK, Rigsby CK, Hlavacek A, et al. Computed tomography imaging in patients with congenital heart disease part I: rationale and utility. An expert consensus document of the Society of Cardiovascular Computed Tomography (SCCT). Endorsed by the Society of Pediatric Radiology (SPR) and the North American Society of Cardiac Imaging (NASCI). *J Cardiovasc Comput Tomogr* 2015; 9: 475–492.
87. Fogel MA, Crawford M. Cardiac magnetic resonance of the common arterial trunk and transposition of the great arteries. *Cardiol Young* 2012; 22: 677–686.
88. Hong SH, Kim YM, Lee CK, Lee CH, Kim SH, Lee SY. 3D MDCT angiography for the preoperative assessment of truncus arteriosus. *Clin Imaging* 2015; 39: 938–944.
89. Sharma A, Priya S, Jagia P. Persistent truncus arteriosus on dual source CT. *Jpn J Radiol* 2016; 34: 486–493.
90. Stapleton GE, Wilmot I, Suh EJ. Cardiac catheterisation of patients with common arterial trunk and transposition of the great arteries. *Cardiol Young* 2012; 22: 687–690.
91. Hosseinpour AR, Shinebourne EA. Assessment of operability for common arterial trunk without cardiac catheterisation. *Cardiol Young* 2005; 15: 241–244.
92. Kobrynski LJ, Sullivan KE. Velocardiofacial syndrome, DiGeorge syndrome: the chromosome 22q11.2 deletion syndromes. *Lancet* 2007; 370: 1443–1452.
93. McDonald R, Dodgen A, Goyal S, et al. Impact of 22q11.2 deletion on the postoperative course of children after cardiac surgery. *Pediatr Cardiol* 2013; 34: 341–347.
94. Jatana V, Gillis J, Webster B, Ades L. Deletion of 22q11.2 syndrome—implications for the intensive care physician. *Pediatr Crit Care Med* 2007; 8: 459–463.
95. Shen L, Gu H, Wang D, et al. Influence of chromosome 22q11.2 microdeletion on postoperative calcium level after cardiac correction surgery. *Pediatr Cardiol* 2011; 32: 904–909.
96. Mastropietro CW, Amula V, Sassalos P, et al. Characteristics and operative outcomes for children undergoing repair of truncus arteriosus: a contemporary multicenter analysis. The Collaborative Research in Pediatric Cardiac Intensive Care Investigators. *J Thorac Cardiovasc Surg* 2019; 157: 2386–2398.
97. Luo K, Zheng J, Zhu Z, et al. Outcomes of right ventricular outflow tract reconstruction for children with persistent truncus arteriosus: a 10-year single-center experience. *Pediatr Cardiol* 2018; 39: 565–574.
98. Alsofi B, McCracken C, Shashidharan S, Deshpande S, Kanter K, Kogon B. The impact of 22q11.2 deletion syndrome on surgical repair outcomes of conotruncal cardiac anomalies. *Ann Thorac Surg* 2017; 104: 1597–1604.
99. Jacobs JP, Mayer JE, Mavroudis C, et al. The Society of Thoracic Surgeons Congenital Heart Surgery Database: 2017 update on outcomes and quality. *Ann Thorac Surg* 2017; 103: 699–709.
100. McElhinney DB, Hedrick HL, Bush DM, et al. Necrotizing enterocolitis in neonates with congenital heart disease: risk factors and outcomes. *Pediatrics* 2000; 106: 1080–1087.
101. McElhinney DB, McDonald-McGinn D, Zackai EH, Goldmuntz E. Cardiovascular anomalies in patients diagnosed with a chromosome 22q11 deletion beyond 6 months of age. *Pediatrics* 2001; 108: E104.
102. Parshuram C, Doyle J, Lau W, Shemie SD. Transfusion-associated graft versus host disease. *Ped Crit Care Med* 2002; 3: 57–62.
103. Ryan AK, Goodship JA, Wilson DI, et al. Spectrum of clinical features associated with interstitial chromosome 22q11 deletions: a European collaborative study. *J Med Genet* 1997; 34: 798–804.
104. Yoshitake S, Kaneko Y, Yakuwa K, Achiwa I. Successful truncal valve replacement with a mechanical valve after bilateral pulmonary artery banding. *World J Pediatr Congenit Heart Surg* 2019; 10: 384–387.
105. Sakurai T, Sakurai H, Yamana K, et al. Expectations and limitations after bilateral pulmonary artery banding. *Eur J Cardiothorac Surg* 2016; 50: 626–631.
106. Hoashi T, Kagisaki K, Oda T, Ichikawa H. Staged biventricular repair for persistent truncus arteriosus with aortic arch obstruction following bilateral pulmonary artery banding. *Interact CardioVasc Thorac Surg* 2011; 12: 281–283.
107. Hoffman TM, Wernovsky G, Atz AM, et al. Efficacy and safety of milrinone in preventing low cardiac output syndrome in infants and children after corrective surgery for congenital heart disease. *Circulation* 2003; 107: 996–1002.
108. Parikh B, Eisses M, Latham GJ, Joffe DC, Ross FJ. Perioperative and anesthetic considerations in truncus arteriosus. *Semin Cardiothorac Vasc Anesth* 2018; 22: 285–293.
109. Brown JW, Ruzmetov M, Okada Y, Vijay P, Turrentine MW. Truncus arteriosus repair: outcomes, risk factors, reoperation and management. *Eur J Cardiothorac Surg* 2001; 20: 221–227.
110. Asagai S, Inai K, Shinohara T, et al. Long-term outcomes after truncus arteriosus repair: a single-center experience for more than 40 years. *Congenit Heart Dis* 2016; 11: 672–677.
111. Russell HM, Pasquali SK, Jacobs JP, et al. Outcomes of repair of common arterial trunk with truncal valve surgery: a review of the Society of Thoracic Surgeons Congenital Heart Surgery Database. *Ann Thorac Surg* 2012; 93: 164–169.
112. Kaza AK, Lim HG, Dibardino DJ, et al. Long-term results of right ventricular outflow tract reconstruction in neonatal cardiac surgery: options and outcomes. *J Thorac Cardiovasc Surg* 2009; 138: 911–916.
113. Sinzobahamvya N, Boscheinen M, Blaszczyk HC, et al. Survival and reintervention after neonatal repair of truncus arteriosus with valved conduit. *Eur J Cardiothorac Surg* 2008; 34: 732–737.
114. Kalavrouziotis G, Purohit M, Ciotti G, Corno AF, Pozzi M. Truncus arteriosus communis: early and midterm results of early primary repair. *Ann Thorac Surg* 2006; 82: 2200–2206.
115. Brown JW, Ruzmetov M, Okada Y, Vijay P, Rodefeld MD, Turrentine MW. Outcomes in patients with interrupted aortic arch and associated anomalies: a 20-year experience. *Eur J Cardiothorac Surg* 2006; 29: 666–673; discussion 673–4.
116. Thompson LD, McElhinney DB, Reddy M, Petrossian E, Silverman NH, Hanley FL. Neonatal repair of truncus arteriosus: continuing improvement in outcomes. *Ann Thorac Surg* 2001; 72: 391–395.
117. Schreiber C, Eicken A, Baling G, et al. Single centre experience on primary correction of common arterial trunk: overall survival and freedom from reoperation after more than 15 years. *Eur J Cardiothorac Surg* 2000; 18: 68–73.
118. Jahangiri M, Zurakowski D, Mayer JE, del Nido PJ, Jonas RA. Repair of the truncal valve and associated interrupted arch in neonates with truncus arteriosus. *J Thorac Cardiovasc Surg* 2000; 119: 508–514.
119. Chen Q, Gao H, Hua Z, et al. Outcomes of surgical repair for persistent truncus arteriosus from neonates to adults: a single centers experience. *PLoS One* 2016; 11: e0146800.
120. Ullmann MV, Gorenflo M, Sebening C, Ulmer HE, Hagl S. Long-term results after repair of truncus arteriosus communis in neonates and infants. *Thorac Cardiovasc Surg* 2003; 51: 175–179.
121. Alexiou C, Keeton BR, Salmon AP, Monro JL. Repair of truncus arteriosus in early infancy with antibiotic sterilized aortic homografts. *Ann Thorac Surg* 2001; 71: S371–S374.
122. Patrick WL, Mainwaring RD, Carrillo SA, et al. Anatomic factors associated with truncal valve insufficiency and the need for truncal valve repair. *World J Pediatr Congenit Heart Surg* 2016; 7: 9–15.
123. Bohuta L, Hussein A, Fricke TA, et al. Surgical repair of truncus arteriosus associated with interrupted aortic arch: long-term outcomes. *Ann Thorac Surg* 2011; 91: 1473–1477.
124. Konstantinov IE, Karamlou T, Blackstone EH, et al. Truncus arteriosus associated with interrupted aortic arch in 50 neonates: a Congenital Heart Surgeons Society study. *Ann Thorac Surg* 2006; 81: 214–222.

125. Backer CL. Techniques for repairing the aortic and truncal valves. *Cardiol Young* 2005; 15: 125–131.
126. Shuhaiber J, Thiagarajan RR, Laussen PC, Fynn-Thompson F, del Nido P, Pigula F. Survival of children requiring repeat extracorporeal membrane oxygenation after congenital heart surgery. *Ann Thorac Surg* 2011; 91: 1949–1955.
127. Miyamoto T, Sinzobahamvya N, Kumpikaite D, et al. Repair of truncus arteriosus and aortic arch interruption: outcome analysis. *Ann Thorac Surg* 2005; 79: 2077–2082.
128. Danton MH, Barron DJ, Stumper O, et al. Repair of truncus arteriosus: a considered approach to right ventricular outflow tract reconstruction. *Eur J Cardiothorac Surg* 2001; 20: 95–103.
129. Lund AM, Vogel M, Marshall AC, et al. Early reintervention on the pulmonary arteries and right ventricular outflow tract after neonatal or early infant repair of truncus arteriosus using homograft conduits. *Am J Cardiol* 2011; 108: 106–113.
130. Hawkins JA, Kaza AK, Burch PT, Lambert LM, Holubkov R, Witte MK. Simple versus complex truncus arteriosus: neutralization of risk but with increased resource utilization. *World J Pediatr Congenit Heart Surg* 2010; 1: 285–291.
131. Miyamoto T, Sinzobahamvya N, Photiadis J, Brecher AM, Asfour B. Survival after surgery with cardiopulmonary bypass in low weight patients. *Asian Cardiovasc Thorac Ann* 2008; 16: 115–119.
132. O'Byrne ML, Mercer-Rosa L, Zhao H, et al. Morbidity in children and adolescents following surgical correction of truncus arteriosus communis. *Am Heart J* 2013; 166: 512–518.
133. O'Byrne ML, Yang W, Mercer-Rosa L, et al. 2q11.2 Deletion syndrome is associated with increased perioperative events and more complicated postoperative course in infants undergoing infant operative correction of truncus arteriosus communis or interrupted aortic arch. *J Thorac Cardiovasc Surg* 2014; 148: 1597–1605.
134. Hanley FL, Heinemann MK, Jonas RA, et al. Repair of truncus arteriosus in the neonate. *J Thorac Cardiovasc Surg* 1993; 105: 1047–1056.
135. Arslan AH, Ugurlucan M, Yildiz Y, et al. Surgical treatment of common arterial trunk in patients beyond the first year of life. *World J Pediatr Congenit Heart Surg* 2014; 5: 211–215.
136. Akintuerk H, Michel-Behnke I, Valeske K, et al. Stenting of the arterial duct and banding of the pulmonary arteries: basis for combined Norwood stage I and II repair in hypoplastic left heart. *Circulation* 2002; 105: 1099–1103.
137. Kaza AK, Burch PT, Pinto N, Minich LL, Tani LY, Hawkins JA. Durability of truncal valve repair. *Ann Thorac Surg* 2010; 90: 1307–1312.
138. Mavroudis C, Backer CL. Surgical management of severe truncal insufficiency: experience with truncal valve remodeling techniques. *Ann Thorac Surg* 2001; 72: 396–400.
139. Henaine R, Azarnoush K, Belli E, et al. Fate of the truncal valve in truncus arteriosus. *Ann Thorac Surg* 2008; 85: 172–178.
140. Myers PO, Bautista-Hernandez V, del Nido PJ, et al. Surgical repair of truncal valve regurgitation. *Eur J Cardiothorac Surg* 2013; 44: 813–820.
141. Fujiwara K, Imai K, Yoshizawa K, Ohno N, Sakazaki H, Tukuda K. Truncal valve repair using autologous pericardial patch augmentation. *Asian Cardiovasc Thorac Ann* 2013; 21: 352–354.
142. Chai PJ, Jacobs JP, Quintessenza JA. Surgery for common arterial trunk. *Cardiol Young* 2012; 22: 691–695.
143. Vouhe PR. Editorial comment: common arterial trunk repair without extracardiac conduit: technically feasible, potentially advantageous. *Eur J Cardiothorac Surg* 2011; 40: 569–570.
144. Nemoto S, Ozawa H, Sasaki T, et al. Repair of persistent truncus arteriosus without a conduit: sleeve resection of the pulmonary trunk from the aorta and direct right ventricle-pulmonary artery anastomosis. *Eur J Cardiothorac Surg* 2011; 40: 563–568.
145. Xu ZW, Shen J. Repair of truncus arteriosus: choice of right ventricle outflow reconstruction. *J Card Surg* 2010; 25: 724–729.
146. Derby CD, Kolcz J, Gidding S, Pizarro C. Outcomes following non-valved autologous reconstruction of the right ventricular outflow tract in neonates and infants. *Eur J Cardiothorac Surg* 2008; 34: 726–731.
147. Honjo O, Kotani Y, Akagi T, et al. Right ventricular outflow tract reconstruction in patients with persistent truncus arteriosus: a 15-year experience in a single Japanese center. *Circ J* 2007; 71: 1776–1780.
148. Chen JM, Glickstein JS, Davies RR, et al. The effect of repair technique on postoperative rightsided obstruction in patients with truncus arteriosus. *J Thorac Cardiovasc Surg* 2005; 129: 559–568.
149. Raisky O, Ali WB, Bajolle F, et al. Common arterial trunk repair: with conduit or without? *Eur J Cardiothorac Surg* 2009; 36: 675–682.
150. Aguilar JM, Garcia E, Arlati FG, Comas JV. Repair of type III common arterial trunk with modified Barbero-Marcial technique. *J Thorac Cardiovasc Surg* 2015; 150: e69.
151. Alfieris GM, Gangemi JJ, Schiralli MP, Swartz MF, Cholette JM. Modified repair of truncus arteriosus to maintain pulmonary artery architecture. *Ann Thorac Surg* 2010; 90: 1038–1039.
152. Barbero-Martial M, Tanamati C. Alternative nonvalved techniques for repair of truncus arteriosus: long-term results. *Semin Thorac Cardiovasc Surg Pediatr Card Surg Annu* 1999; 2: 121–130.
153. Sandrio S, Ruffer A, Purbojo A, Glockler M, Dittrich S, Cesnjevar R. Common arterial trunk: current implementation of the primary and staged repair strategies. *Interact CardioVasc Thorac Surg* 2015; 21: 754–760.
154. Tlaskal T, Chaloupecky V, Hucin B, et al. Long-term results after correction of persistent truncus arteriosus in 83 patients. *Eur J Cardiothorac Surg* 2010; 37: 1278–1284.
155. Niemantsverdriet MB, Ottenkamp J, Gauvreau K, Del Nido PJ, Hazenkamp MG, Jenkins KJ. Determinants of right ventricular outflow tract conduit longevity: a multinational analysis. *Congenit Heart Dis* 2008; 3: 176–184.
156. Mavroudis C, Jonas RA, Bove EL. Personal glimpses into the evolution of truncus arteriosus repair. *World J Pediatr Congenit Heart Surg* 2015; 6: 226–238.
157. Brown JW, Ruzmetov M, Rodefeld MD, Vijay P, Turrentine MW. Right ventricular outflow tract reconstruction with an allograft conduit in non-ross patients: risk factors for allograft dysfunction and failure. *Ann Thorac Surg* 2005; 80: 655–663.
158. Hickey EJ, McCrindle BW, Blackstone EH, et al.; CHSS Pulmonary Conduit Working Group. Jugular venous valved conduit (Contegra) matches allograft performance in infant truncus arteriosus repair. *Eur J Cardiothorac Surg* 2008; 33: 890–898.
159. Sinzobahamvya N, Asfour B, Boscheinen M, et al. Compared fate of small-diameter Contegras and homografts in the pulmonary position. *Eur J Cardiothorac Surg* 2007; 32: 209–214.
160. McElhinney DB, Rajasinghe HA, Mora BN, Reddy VM, Silverman NH, Hanley FL. Reinterventions after repair of common arterial trunk in neonates and young infants. *J Am Coll Cardiol* 2000; 35: 1317–1322.
161. Buber J, Assenza GE, Huang A, et al. Durability of large diameter right ventricular outflow tract conduits in adults with congenital heart disease. *Int J Cardiol* 2014; 175: 455–463.
162. Curi-Curi P, Cervantes J, Soulé M, Erdmenger J, Calderón-Colmenero J, Ramírez S. Early and midterm results of an alternative procedure to homografts in primary repair of truncus arteriosus communis. *Congenit Heart Dis* 2010; 5: 262–270.
163. Miyazaki T, Yamagishi M, Maeda Y, et al. Long-term outcomes of expanded polytetrafluoroethylene conduits with bulging sinuses and a fan-shaped valve in right ventricular outflow tract reconstruction. *J Thorac Cardiovasc Surg* 2018; 155: 2567–2576.
164. Erbel V, Aboyans V, Boileau C, et al. 2014 ESC guidelines on the diagnosis and treatment of aortic diseases. Document covering acute and chronic aortic diseases of the thoracic and abdominal aorta of the adult. The Task Force for the Diagnosis and Treatment of Aortic Diseases of the European Society of Cardiology (ESC). *Eur Heart J* 2014; 35: 2873–2926.
165. Baumgartner H, De Backer J, Babu-Narayan SV, et al. 2020 ESC Guidelines for the management of adult congenital heart disease: The Task Force for the management of adult congenital heart disease of the European Society of Cardiology (ESC). *Eur Heart J* 2020; doi: [10.1093/eurheartj/ehaa554](https://doi.org/10.1093/eurheartj/ehaa554).



166. Peng LF, McElhinney DB, Nugent AW, et al. Endovascular stenting of obstructed right ventricle-to-pulmonary artery conduits: a 15-year experience. *Circulation* 2006; 113: 2598–2605.
167. Sugiyama H, Williams W, Benson LN. Implantation of endovascular stents for the obstructive right ventricular outflow tract. *Heart* 2005; 91: 1058–1063.
168. Carr M, Bergersen L, Marshall AC, et al. Bare metal stenting for obstructed small diameter homograft conduits in the right ventricular outflow tract. *Catheter Cardiovasc Interv* 2013; 81: E44–E52.
169. Bonhoeffer P, Boudjemline Y, Saliba Z, et al. Percutaneous replacement of pulmonary valve in a right-ventricle to pulmonary-artery prosthetic conduit with valve dysfunction. *Lancet* 2000; 356: 1403–1405.
170. McElhinney DB, Hellenbrand WE, Zahn EM, et al. Short- and medium-term outcomes after transcatheter pulmonary valve placement in the expanded multicenter US Melody valve trial. *Circulation* 2010; 122: 507–516.
171. Lurz PY, Coats LM, Khambadkone SM, et al. percutaneous pulmonary valve implantation: impact of evolving technology and learning curve on clinical outcome. *Circulation* 2008; 117: 1964–1972.
172. Stout KK, Daniels CJ, Aboulhosn JA, et al. 2018 AHA/ACC guideline for the management of adults with congenital heart disease: executive summary: a report of the American College of Cardiology/American Heart Association Task Force on Clinical Practice Guidelines. *J Am Coll Cardiol* 2019; 73: 1494–1563.
173. Murray BH, McElhinney DB, Cheatham JP, et al. Risk of coronary artery compression among patients referred for transcatheter pulmonary valve implantation: a multicenter experience. *Circ Cardiovasc Interv* 2013; 6: 535–542.
174. Fraisse A, Assaidi A, Mauri L, et al. Coronary artery compression during intention to treat right ventricle outflow with percutaneous pulmonary valve implantation: incidence, diagnosis, and outcome. *Catheter Cardiovasc Interv* 2014; 83: E260–E268.
175. Gonzalez I, Kenny D, Slyder S, Hijazi ZM. Medium and long-term outcomes after bilateral pulmonary artery stenting in children and adults with congenital heart disease. *Pediatr Cardiol* 2013; 34: 179–184.
176. Kenny D, Amin Z, Slyder S, Hijazi ZM. Medium-term outcomes for peripheral pulmonary artery stenting in adults with congenital heart disease. *J Interv Cardiol* 2011; 24: 373–377.
177. Smallhorn JF. Intraoperative transesophageal echocardiography in congenital heart disease. *Echocardiography* 2002; 19: 709–723.
178. Ayres NA, Miller-Hance W, Fyfe DA, et al. Indications and guidelines for performance of transesophageal echocardiography in the patient with pediatric acquired or congenital heart disease: report from the task force of the Pediatric Council of the American Society of Echocardiography. *J Am Soc Echocardiogr* 2005; 18: 91–98.
179. Muhiudeen IA, Roberson DA, Silverman NH, Haas G, Turley K, Cahalan MK. Intraoperative echocardiography in infants and children with congenital cardiac shunt lesions: transesophageal versus epicardial echocardiography. *J Am Coll Cardiol* 1990; 16: 1687–1695.
180. Manvi VF, Dixit M, Srinivas K, Vagarali A, Patil S, Manvi NG. Accuracy of intraoperative epicardial echocardiography in the assessment of surgical repair of congenital heart defects confirmed. *J Cardiovasc Echography* 2013; 23: 60–65.
181. Kozlik-Feldmann R, Hansmann G, Bonnet D, Schranz D, Apitz C, Michel-Behnke I. Pulmonary hypertension in children with congenital heart disease (PAH-CHD, PPHVD-CHD). Expert consensus statement on the diagnosis and treatment of paediatric pulmonary hypertension. The European Paediatric Pulmonary Vascular Disease Network, endorsed by ISHLT and DGPK. *Heart* 2016; 102: ii42–ii48.
182. Kaestner M, Schranz D, Warnecke G, Apitz C, Hansmann G, Miera O. Pulmonary hypertension in the intensive care unit. Expert consensus statement on the diagnosis and treatment of paediatric pulmonary hypertension. The European Paediatric Pulmonary Vascular Disease Network, endorsed by ISHLT and DGPK. *Heart* 2016; 102: ii57–ii66.
183. McGoon DC, Rastelli GC, Ongley PA. An operation for the correction of truncus arteriosus. *JAMA* 1968; 205: 69–71.
184. Jacobs JP, Mayer JE, Pasquali SK, et al. The society of thoracic surgeons congenital heart surgery database: 2019 update. *Ann Thorac Surg* 2019; 107: 691–704.
185. Uzzaman MM, Khan NE, Davies B, et al. Long-term outcome of interrupted arch repair with direct anastomosis and homograft augmentation patch. *Ann Thorac Surg* 2018; 105: 1819–1826.
186. Boris JR. Primary care management of patients with common arterial trunk and transposition of the great arteries. *Cardiol Young* 2012; 22: 761–767.
187. Wernovsky G, Rome J, Tabbutt S, et al. Guidelines for the outpatient management of complex congenital heart disease: outpatient management of complex CHD. *Congenit Heart Dis* 2006; 1: 10–26.
188. Falk V, Baumgartner B, Bax JJ, et al. 2017 ESC/EACTS Guidelines for the management of valvular heart disease. *Eur J Cardiothorac Surg* 2017; 52: 616–664.
189. Cheatham JP, Hellenbrand WE, Zahn EM, et al. Clinical and hemodynamic outcomes up to 7 years after transcatheter pulmonary valve replacement in the US melody valve investigational device exemption trial. *Circulation* 2015; 131: 1960–1970.
190. Eicken A, Ewert P, Hager A, et al. Percutaneous pulmonary valve implantation: two-centre experience with more than 100 patients. *Eur Heart J* 2011; 32: 1260–1265.
191. Haas NA, Schirmer KR. Guidelines for the management of congenital heart diseases in childhood and adolescence. *Cardiol Young* 2017; 27 (Suppl 3): S1–S105.
192. Galié N, Humbert M, Vachiery JL, et al.; ESC Scientific Document Group. 2015 ESC/ERS Guidelines for the diagnosis and treatment of pulmonary hypertension: the Joint Task Force for the Diagnosis and Treatment of Pulmonary Hypertension of the European Society of Cardiology (ESC) and the European Respiratory Society (ERS): endorsed by: association for European Paediatric and Congenital Cardiology (AEPC), International Society for Heart and Lung Transplantation (ISHLT). *Eur Heart J* 2016; 37: 67–119.
193. Fung WL, Butcher NJ, Costain G, et al. Practical guidelines for managing adults with 22q11.2 deletion syndrome. *Genet Med* 2015; 17: 599–609.
194. Habel A, Herriot R, Kumararatne D, et al. Towards a safety net for management of 22q11.2 deletion syndrome: guidelines for our times. *Eur J Pediatr* 2014; 173: 757–765.
195. Decker JA, McCormack J, Cohen MI. Arrhythmia management in patients with a common arterial trunk and d-transposition of the great arteries. *Cardiol Young* 2012; 22: 748–754.
196. Warnes CA, Williams RG, Bashore TM, et al. ACC/AHA 2008 guidelines for the management of adults with congenital heart disease: executive summary: a report of the American College of Cardiology/American Heart Association Task Force on Practice Guidelines (Writing Committee to Develop Guidelines for the Management of Adults With Congenital Heart Disease). Developed in collaboration with the American Society of Echocardiography, Heart Rhythm Society, International Society for Adult Congenital Heart Disease, Society for Cardiovascular Angiography and Interventions, and Society of Thoracic Surgeons. *J Am Coll Cardiol* 2008; 52: 1890–1947.
197. Valente AM, Cook S, Festa P, et al. Multimodality imaging guidelines for patients with repaired tetralogy of Fallot: a report from the American Society of Echocardiography: developed in collaboration with the Society for Cardiovascular Magnetic Resonance and the Society for Pediatric Radiology. *J Am Soc Echocardiogr* 2014; 27: 111–141.
198. Kilner PJ, Geva T, Kaemmerer H, Trindade PT, Schwitler J, Webb GD. Recommendations for cardiovascular magnetic resonance in adults with congenital heart disease from the respective working groups of the European Society of Cardiology. *Eur Heart J* 2010; 31: 794–805.
199. Grewal J, Majdalany D, Syed I, Pellicka P, Warnes CA. Three-dimensional echocardiographic assessment of right ventricular volume and function in adult patients with congenital heart disease: comparison with magnetic resonance imaging. *J Am Soc Echocardiogr* 2010; 23: 127–133.
200. Mannaerts HF, Van Der Heide JA, Kamp O, et al. Quantification of left ventricular volumes and ejection fraction using freehand transthoracic three-dimensional echocardiography: comparison with magnetic resonance imaging. *J Am Soc Echocardiogr* 2003; 16: 101–109.
201. Malm S, Frigstad S, Sagberg E, Larsson H, Skjaerpe T. Accurate and reproducible measurement of left ventricular volume and ejection fraction by

- contrast echocardiography: a comparison with magnetic resonance imaging. *J Am Coll Cardiol* 2004; 44: 1030–1035.
202. Valsangiacomo Buechel ER, Grosse-Wortmann L, Fratz S, et al. Indications for cardiovascular magnetic resonance in children with congenital and acquired heart disease: an expert consensus paper of the Imaging Working Group of the AEPC and the Cardiovascular Magnetic Resonance Section of the EACVI. *Eur Heart J Cardiovasc Imaging* 2015; 16: 281–297.
  203. Beerbaum P, Körperich H, Barth P, Esdorn H, Gieseke J, Meyer H. Noninvasive quantification of left-to-right shunt in pediatric patients: phase-contrast cine magnetic resonance imaging compared with invasive oximetry. *Circulation* 2001; 103: 2476–2482.
  204. Babu-Narayan SV, Kilner PJ, Li W, et al. Ventricular fibrosis suggested by cardiovascular magnetic resonance in adults with repaired tetralogy of Fallot and its relationship to adverse markers of clinical outcome. *Circulation* 2006; 113: 405–413.
  205. Wald RM, Haber I, Wald R, Valente AM, Powell AJ, Geva T. Effects of regional dysfunction and late gadolinium enhancement on global right ventricular function and exercise capacity in patients with repaired tetralogy of Fallot. *Circulation* 2009; 119: 1370–1377.
  206. Stout KK, Daniels CJ, Aboulhosn JA, et al. 2018 AHA/ACC Guideline for the management of adults with congenital heart disease: a Report of the American College of Cardiology/ American Heart Association Task Force on Clinical Practice Guidelines. *Circulation* 2019; 139: e833–e834.
  207. Saremi F, Ho SY, Cabrera JA, Sánchez-Quintana D. Right ventricular outflow tract imaging with CT and MRI: part 2, function. *AJR Am J Roentgenol* 2013; 200: W51–W61.
  208. Takx RA, Moscariello A, Schoepf UJ, et al. Quantification of left and right ventricular function and myocardial mass: comparison of low-radiation dose 2nd generation dual-source CT and cardiac MRI. *Eur J Radiol* 2012; 81: e598.
  209. Maffei E, Messalli G, Martini C, et al. Left and right ventricle assessment with Cardiac CT: validation study vs. Cardiac MR. *Eur Radiol* 2012; 22: 1041–1049.
  210. Diller G, Dimopoulos K, Okonko D, et al. Exercise intolerance in adult congenital heart disease: comparative severity, correlates, and prognostic implication. *Circulation* 2005; 112: 828–835.
  211. Sarris GE, Balmer C, Bonou P, et al.; Authors/Task Force Members. Clinical guidelines for the management of patients with transposition of the great arteries with intact ventricular septum. *Cardiol Young* 2017; 27: 530–569.
  212. Gisler F, Knirsch W, Harpes P, Bauersfeld U. Effectiveness of angiotensin-converting enzyme inhibitors in pediatric patients with mid to severe aortic valve regurgitation. *Pediatr Cardiol* 2008; 29: 906–909.
  213. Evangelista A, Tornos P, Sambola A, Permyer-Miralda G, Soler-Soler J. Long-term vasodilator therapy in patients with severe aortic regurgitation. *N Engl J Med* 2005; 353: 1342–1349.
  214. Schön HR. Hemodynamic and morphologic changes after long-term angiotensin converting enzyme inhibition in patients with chronic valvular regurgitation. *J Hypertens* 1994; 12: S95–S104.
  215. Shah RM, Singh M, Bhuriya R, Molnar J, Arora RR, Khosla S. Favorable effects of vasodilators on left ventricular remodeling in asymptomatic patients with chronic moderate-severe aortic regurgitation and normal ejection fraction: a meta-analysis of clinical trials. *Clin Cardiol* 2012; 35: 619–625.
  216. Niwa K, Perloff JK, Bhuta SM, et al. Structural abnormalities of great arterial walls in congenital heart disease: light and electron microscopic analyses. *Circulation* 2001; 103: 393–400.
  217. Frischhertz BP, Shamszad P, Pedroza C, Milewicz DM, Morris SA. Thoracic aortic dissection and rupture in conotruncal cardiac defects: a population-based study. *Int J Cardiol* 2015; 184: 521–527.
  218. Zanjani KS, Niwa K. Aortic dilatation and aortopathy in congenital heart diseases. *J Cardiol* 2013; 61: 16–21.
  219. Habib G, Lancellotti P, Antunes MJ, et al. 2015 ESC Guidelines for the management of infective endocarditis. The Task Force for the Management of Infective Endocarditis of the European Society of Cardiology (ESC). Endorsed by: European Association for Cardio-Thoracic Surgery (EACTS), the European Association of Nuclear Medicine (EANM). *Eur Heart J* 2015; 36: 3075–3128.
  220. Longmuir P, Brothers J, De Ferranti S, et al. Promotion of physical activity for children and adults with congenital heart disease: a scientific statement from the American Heart Association. *Circulation* 2013; 127: 2147–2159.
  221. Takken T, Giardini A, Reybrouck T, et al. Recommendations for physical activity, recreation sport, and exercise training in paediatric patients with congenital heart disease: a report from the Exercise, Basic & Translational Research Section of the European Association of Cardiovascular Prevention and Rehabilitation, the European Congenital Heart and Lung Exercise Group, and the Association for European Paediatric Cardiology. *Eur J Prev Cardiol* 2012; 19: 1034–1065.
  222. Uebing A, Steer P, Yentis S, Gatzoulis M. Pregnancy and congenital heart disease. *BMJ* 2006; 332: 401–406.
  223. Regitz-Zagrosek V, Roos-Hesselink JW, Bauersachs J, et al.; ESC Scientific Document Group. 2018 ESC Guidelines for the management of cardiovascular diseases during pregnancy. *Eur Heart J* 2018; 39: 3165–3241.
  224. Avila WS, Grinberg M, Snitcowsky R, et al. Maternal and fetal outcome in pregnant women with Eisenmenger's syndrome. *Eur Heart J* 1995; 16: 460–464.
  225. Thorne S, Macgregor A, Nelson-Piercy C. Risks of contraception and pregnancy in heart disease. *Heart* 2006; 92: 1520–1525.
  226. Balint OH, Siu SC, Mason J, et al. Cardiac outcomes after pregnancy in women with congenital heart disease. *Heart* 2010; 96: 1656–1661.
  227. Roos-Hesselink JW, Ruys TP, Stein JI, et al.; ROPAC Investigators. Outcome of pregnancy in patients with structural or ischaemic heart disease: results of a registry of the European Society of Cardiology. *Eur Heart J* 2013; 34: 657–665.
  228. European Congenital Heart Surgeons Association (ECHSA) Congenital Database. Online report—Mortality vs. procedure, 2020. Retrieved August 2020, from [https://echsacongenitaldb.org/mvp\\_report/](https://echsacongenitaldb.org/mvp_report/)