

Impaired subjective well-being in schizophrenia is associated with reduced anterior cingulate activity during reward processing

J. Gilleen*, S. S. Shergill and S. Kapur

Department of Psychosis Studies, Institute of Psychiatry, King's College London, UK

Background. Patients with schizophrenia have substantially reduced subjective well-being (SW) compared to healthy individuals. It has been suggested that diminished SW may be related to deficits in the neural processing of reward but this has not been shown directly. We hypothesized that, in schizophrenia, lower SW would be associated with attenuated reward-related activation in the reward network.

Method. Twenty patients with schizophrenia with a range of SW underwent a functional magnetic resonance imaging (fMRI) reward task. The brain activity underlying reward anticipation and outcome in schizophrenia was examined and compared to that of 12 healthy participants using a full factorial analysis. Region of interest (ROI) analyses of areas within the reward network and whole-brain analyses were conducted to reveal neural correlates of SW.

Results. Reward-related neural activity in schizophrenia was not significantly different from that of healthy participants; however, the patients with schizophrenia showed significantly diminished SW. Both ROI and whole-brain analyses confirmed that SW scores in the patients correlated significantly with activity, specifically in the dorsal anterior cingulate cortex (dACC), during both reward anticipation and reward outcome. This association was not seen in the healthy participants.

Conclusions. In patients with schizophrenia, reduced activation of the dACC during multiple aspects of reward processing is associated with lower SW. As the dACC has been widely linked to coupling of reward and action, and the link to SW is apparent over anticipation and outcome, these findings suggest that SW deficits in schizophrenia may be attributable to reduced integration of environmental rewarding cues, motivated behaviour and reward outcome.

Received 26 July 2013; Revised 20 June 2014; Accepted 24 June 2014; First published online 28 July 2014

Key words: Dysphoria, fMRI, reward, schizophrenia, subjective well-being.

Introduction

While treatment of schizophrenia has focused on reduction of the clinical presence of positive symptoms, there has been increasing recognition of the importance of patients' subjective experiences of illness as an important therapeutic target and key predictor of outcome (Karow *et al.* 2007). Approximately one-third of patients with schizophrenia treated with antipsychotic medication experience dysphoria (Voruganti *et al.* 2001), which can influence clinical and functional outcome and compliance (Naber *et al.* 2005). Patients' subjective well-being (SW) can be measured with the Subjective Well-Being Under Neuroleptic Treatment Scale (SWN; Naber, 1995), which assesses patients' psychological and emotional state and can be

differentiated from other related constructs such as depression and anhedonia. SW is a multidimensional construct that measures patients' perceptions of social integration, self-control, emotional-regulation, mental and physical functioning. It is also a distinct outcome measure in schizophrenia (Lambert & Naber, 2004) and is a central predictor of medication compliance (Karow *et al.* 2007); however, the neural basis of poor SW remains unclear.

Subjective experience is intricately linked to dopaminergic functioning and reward processing. Alterations in dopaminergic tone manifest negative changes in subjective experience, such as increased dysphoria, and lower SW following consumption of antipsychotics (Voruganti & Awad, 2004), the administration of which depletes dopaminergic transmission (de Haan *et al.* 2000). Accordingly, SW is generally higher in patients treated with atypical rather than typical antipsychotics despite similar efficacy in reducing positive symptoms (Naber *et al.* 2001; Karow & Naber, 2002), probably because these compounds produce lower

* Address for correspondence: J. Gilleen, Ph.D., Department of Psychosis Studies, Institute of Psychiatry, King's College London, PO Box 63, De Crespigny Park, Denmark Hill, London SE5 8AF, UK. (Email: james.1.gilleen@kcl.ac.uk)

striatal D2 receptor blockade. The level of ventral striatal (VS) dopamine receptor binding is associated with SW in medicated patients with schizophrenia (Mizrahi *et al.* 2007). The ventral striatum is central to reward processing, and it has been widely shown that activation in the ventral striatum is elevated during reward anticipation (e.g. Schott *et al.* 2008). The VS signal reflects dopamine activity (Knutson & Gibbs, 2007) and this signal has been shown to be absent in healthy participants following dopamine depletion with alpha-methyl-para-tyrosine (AMPT; da Silva Alves *et al.* 2010).

This evidence then suggests that the relationship between SW and altered dopaminergic function may be underpinned by a central role of dopamine in reward-based learning. In this way, the antipsychotic olanzapine (a dopamine antagonist), which reduces reward-related brain activation in the reward network (Abler *et al.* 2007), interferes with neural activation in reward areas during reward processing and reduces subjective experience in healthy participants after only a single dose (Schlagenhauf *et al.* 2007). Reduced anticipation of reward in schizophrenia is also associated with anhedonia (Gard *et al.* 2007). Dysfunction of the reward network in patients with schizophrenia will, therefore, negatively impact processing of, and motivation towards, environmental reward cues, which we propose forms the mechanism for low SW in schizophrenia.

SW has, however, been shown to improve with the antipsychotic aripiprazole despite high striatal D2 receptor blockade (Mizrahi *et al.* 2009) and strong correlations between SW and D2 receptor binding in cortical brain regions have been reported (Mizrahi *et al.* 2007). These findings suggest that SW is not just a function of striatal D2 receptor binding but may be related to functioning of extrastriatal brain regions. Consequently, in this study we aimed to investigate the neural correlates of SW in schizophrenia using functional magnetic resonance imaging (fMRI), specifically the relationship between SW and activation of the reward network in response to rewarding stimuli but also across the whole brain to investigate extrastriatal neural correlates. We hypothesized that, in schizophrenia patients, lower SW would be associated with attenuated reward-related activation in regions of the reward network and this would be confirmed by region of interest (ROI) analyses of these regions. In addition, SW-related changes in activation in these regions would be greater in the anticipatory phase than the outcome phase. Vothknecht *et al.* (2012) suggested that the SWN, despite being designed for use in schizophrenia, may be valid in healthy volunteers; hence we carried out a subsequent exploratory analysis investigating whether there was a similar relationship between SW and brain activity in healthy participants.

Method

Design

Patients with schizophrenia and healthy control participants underwent fMRI during a modified Monetary Incentive Delay (MID) reward task (see Knutson *et al.* 2001). Behavioural data were analysed to establish the degree to which performance and ratings of outcome were related to SW. The fMRI data were analysed to examine (a) brain activation during the anticipatory and consummatory phases of the reward task *per se* in patients and healthy participants; and (b) brain activity within areas of the reward network that correlated with SW scores using ROI analyses. Whole-brain analyses were also conducted to reveal areas of the brain other than reward regions that correlated with SW.

Participants

Twenty male dextral patients with a DSM-IV diagnosis of schizophrenia and 12 healthy participants took part. Patients were on average 36.5 years old (s.d.=6.9) and had an average National Adult Reading Test-2 (NART-2; Nelson & Willison, 1991) IQ score of 101.6 (s.d.=11.6). Healthy participants had a mean age of 30.7 years (s.d.=7.3) and an IQ of 106.4 (s.d.=9.2); thus patients were on average 5 years older than controls but neither IQ scores nor ages were significantly different.

Patients were moderately symptomatic [Positive And Negative Syndrome Scale (PANSS; Kay *et al.* 1987) mean total score=57.5 (s.d.=15.2); subscale mean (s.d.) score: positive scale=15.8 (7.3), negative scale=13.7 (5.6) and general scale=28.1 (6.3)] and had low extrapyramidal side-effects [Simpson–Angus Scale (SAS; Simpson & Angus, 1970) mean score=4.54 (s.d.=3.2), Extrapyramidal Symptom Rating Scale (ESRS; Chouinard *et al.* 1980) mean score=2.14 (s.d.=2.6) and Barnes Akathisia Rating Scale (BARS; Barnes, 1989) mean score=1.33 (s.d.=3.2, median=0.0)]. None of the 20 patients had Parkinsonism.

Six patients received olanzapine (7.5–25 mg), four risperidone (2–6 mg; one patient: 37.5 mg/14 days of Risperidal Consta), two zuclopenthixol (400 mg), two clozapine (50–300 mg), one flupentixol (30 mg/14 days), two quetiapine (100/300 mg), one aripiprazole (20 mg), one combination of chlorpromazine (CPZ; 100 mg) and sulpride (600 mg) and one was unmedicated (mean CPZ-equivalent dose=229.5 mg, s.d.=145.72, range 75–600). After complete description of the study to the subjects, written informed consent was obtained. Ethical approval was provided by Camden and Islington Community Local Research Ethics Committee (ref.: 08/H0722/22).

Measures

All participants completed the short version of the SWN (Naber, 1995), which has 20 items measured on a seven-point Likert scale. This scale provides an SW score out of 120 points and quantifies judgements on five factors: emotional regulation, mental functioning, physical functioning, self-control and social integration. The SWN is best interpreted as a total score (Vothknecht *et al.* 2012), as used here. The patients also completed the Beck Depression Inventory-2 (BDI-2; Beck *et al.* 1996), and the SAS, ESRS and BARS as measures of medication side-effects.

fMRI procedure

Subjects completed a version of the MID task (Knutson *et al.* 2001) in which visual cues predict potential outcome and performance (the reaction time of a button press to a target) determines reward outcome. The two phases examined in the study were the anticipatory phase (after cue presentation) and an outcome phase (trial outcome). All participants were trained before the scanning session to preclude measuring learning mechanisms. Each 18.5-s trial consisted of cue presentation (duration 2–8 s), followed by presentation of a brief ‘target’ square (initially 250 ms, then adjusted by the algorithm). Then, after a delay of 2–8 s, the outcome of the trial was displayed for 2–8 s.

There were five cue types: large win, small win, small loss, large loss and neutral (no financial reward or punishment). Each of three fMRI runs (Fig. 1) consisted of 24 trials each of high reward (HR; £5), low reward (LR; £0.5), small loss (SL –£0.5) and large loss (LL; –£5) trials and 48 control trials (where there was no potential for gain or loss), giving a total of 144 trials. Hitting the target that appears after the cue (button press reaction time within the target window) results in a positive outcome: financial gain in the ‘win’ trials and prevention of loss in the ‘lose’ trials. Missing the target (reacting too slowly) results in negative outcome: no gain in the ‘win’ trials and a loss in the ‘lose’ trials. An algorithm shifts the target reaction time window such that the participant ‘hits’ in 66% of trials and ‘misses’ in 34% of trials, ensuring sufficient data for ‘hit’ and ‘miss’ trials irrespective of relative absolute performance. Each of three runs lasted 14 m 48 s, producing a total scan time of 44 m 24 s.

Participants then rated their satisfaction at the outcome on a nine-point Likert visual analogue scale (VAS) from ‘not satisfied’ to ‘very satisfied’ (duration 3 s). This was included to ensure that patients exhibited a range of subjective valences that reflected reward outcome differences to demonstrate that the task elicited subjectively rewarding responses. There was a final 0.5-s ‘fixation cross’. All money won and lost by

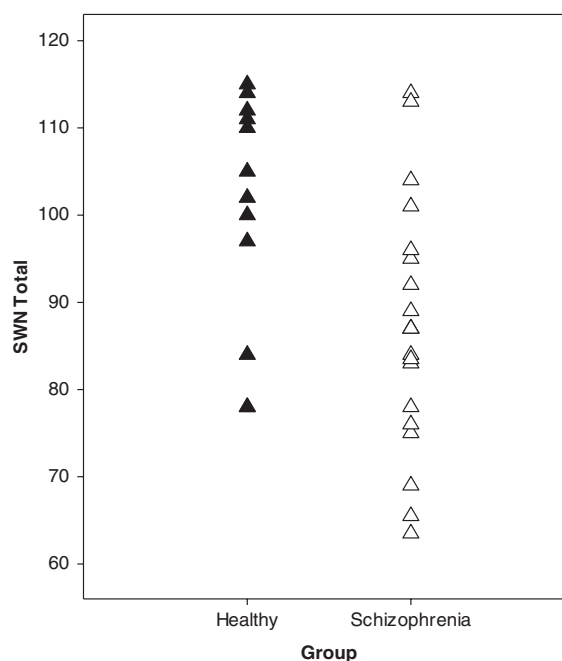


Fig. 1. Distribution of subjective well-being (SW) scores on the Subjective Well-Being Under Neuroleptic Treatment Scale (SWN) for the healthy control ($n=12$) and patient ($n=20$) groups.

the participant was representational; however, to ensure motivation, and anticipation and outcome effects, payment to participants was proportional to their game profits (between £15 and £25).

Scanning parameters

A total of 448 gradient-echo echo-planar blood oxygen level-dependent (BOLD) images [repetition time (TR)/echo time (TE)=2000/25 ms, flip angle=75°, matrix=64×64, field of view (FOV)=220] were acquired on a 3-T GE Excite II MR scanner (GE Healthcare, USA) during each run of the task. Each whole-brain image contained 38 non-contiguous slices of 2.4-mm thickness separated by a distance of 1 mm and an in-plane isotropic voxel resolution of 3.4 mm.

Analysis

Behavioural data analysis

Mean consummatory VAS scores of post-outcome satisfaction for each cue type and target response (hit and miss) were calculated. A repeated-measures ANOVA was conducted to reveal effects of valence (positive or negative outcome), magnitude of outcome, target response and group on VAS scores. Between-group ANOVAs of total money accrued by participants were conducted. Further correlation analyses were conducted to determine the relationship between VAS scores and SW and to examine the relationship

between CPZ-equivalent dose and outcomes scores in the patients.

fMRI data processing and analysis

fMRI data were preprocessed and analysed using SPM5 (Statistical Parametric Mapping, Wellcome Department of Imaging Neuroscience, University of London, UK). Data were realigned across sessions to the first image of the first series, normalized to a standard-brain template and smoothed using an 8-mm full-width at half-maximum (FWHM) Gaussian kernel. Analyses were conducted in the context of the general linear model (GLM; Friston *et al.* 1998) to determine: (i) brain regions associated with reward processing (anticipation and outcome) to reveal any abnormalities in reward processing in the patient group in the first instance; (ii) whether ROI analyses of the reward network would reveal that SW in the patient group was associated with reward-related BOLD response in the reward network and whether whole-brain analyses would reveal whether activity in other, non-reward network areas correlated with SW; and (iii) whether the healthy participants showed a similar pattern.

Reward-related activations

First-level event-related GLMs were constructed for each participant. GLMs included a regressor predicting the BOLD response to each of two phases (anticipation/outcome), five cue types (high reward/low reward/control trials/low loss/high loss) by outcomes (win/lose) convolving a vector of delta functions for the onset of the stimuli for that condition with the canonical haemodynamic response function. Effects of head motion were minimized by the inclusion of six realignment parameter vectors as regressors of no interest. These first-level contrast images were entered into a second-level, random-effects $2 \times 5 \times 2$ full-factorial analysis. The main effects of anticipation and outcome were then established [$p < 0.05$, family-wise error (FWE)-corrected] for the two groups to confirm that the task elicited reward-related activity; and group \times reward interaction effects were investigated at $p < 0.05$ FWE-corrected to reveal any group differences. Montreal Neurological Institute (MNI) coordinates were converted to Talairach space using mni2tal (Brett; <http://imaging.mrc-cbu.cam.ac.uk/imaging/MniTalairach>).

SW analysis

For the patient group the principal covariate of interest, total SW score, was included in a full-factorial model to identify brain regions where activity correlated with SW scores. ROIs were chosen from four key

a priori regions based on previous publications: the anterior cingulate cortex (ACC), cingulate gyrus, ventral striatum and caudate nuclei regions (see Haber & Knutson, 2010). The ventral striatum mask was taken from Mawlawi *et al.* (2001), the remainder from Pickatlas software (Maldjian *et al.* 2003). As multiple ROIs were being investigated, the significance level (α) for assessing effects from the ROI analysis was Bonferroni corrected to $p < 0.0125$ (FWE-corrected). Separate and combined analyses were conducted for the anticipation and outcome phases. A final whole-brain analysis was also performed to examine areas outside the reward network that correlated with SW. The significance threshold for the whole-brain analyses was set at $p < 0.05$ (FWE-corrected). These analyses were also conducted in an exploratory fashion in the healthy participants.

Ethical standards

All procedures contributing to this work comply with the ethical standards of the relevant national and institutional committees on human experimentation and with the Helsinki Declaration of 1975, as revised in 2008.

Results

SW

The patients (mean SWN score=87.1, *s.d.*=14.1) showed significantly lower SW than the healthy volunteers (mean SWN score=100.5, *s.d.*=13.6, $p < 0.01$). Figure 1 shows the distribution of SWN scores for the two groups. The patients showed mild levels of depression (mean BDI score=11.8, *s.d.*=9.2) that were significantly greater than those of the healthy controls (mean BDI score=4.4, *s.d.*=4.3, $p < 0.01$). SWN and BDI scores correlated significantly ($r = -0.7$, $p < 0.005$).

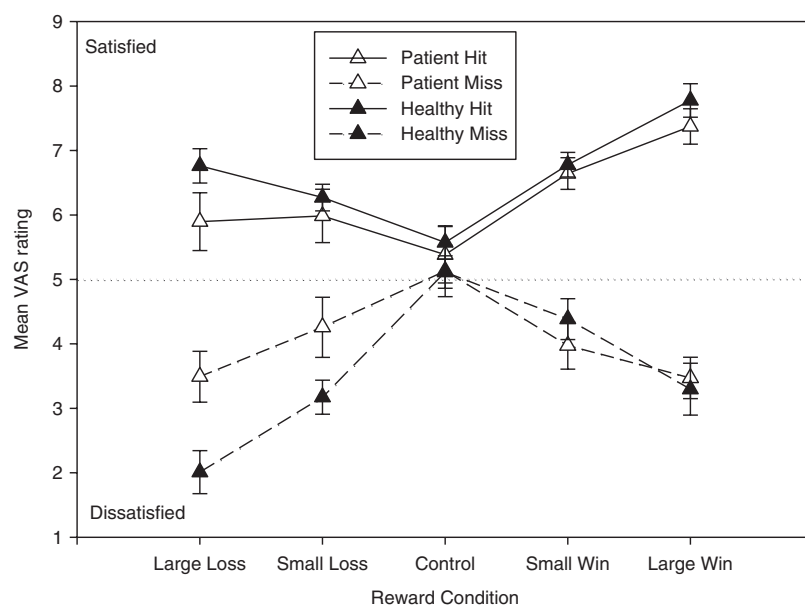
Behavioural data

As expected, hit outcomes rated on the VAS were judged more satisfying than miss outcomes ($F_{1,31} = 109.4$, $p < 0.001$), rewarding trials more satisfying than loss trials ($F_{1,31} = 39.30$, $p < 0.001$) and larger rewards more satisfying than smaller rewards ($F_{1,31} = 8.55$, $p < 0.01$). There were no group effects of hit rates or reaction times (Table 1). There was also no main effect of group on VAS scores with respect to either outcome or magnitude of reward. There was a modest difference on VAS scores between the groups with respect to trial valence ($F_{1,31} = 5.51$, $p < 0.05$). Patients were less dissatisfied at missing an opportunity to avoid a loss than were controls (Fig. 2): this was evident as a trend for small losses and as a statistically significant

Table 1. Mean (s.d.) group hit rate and reaction times for each salient cue type and total amount gained

Measure	Cue	Group	
		Schizophrenia	Healthy
Hit rate (%)	Large win	60.59 (12.01)	66.05 (7.82)
	Small win	60.88 (12.59)	67.42 (7.70)
	Large loss	62.67 (14.07)	68.10 (9.21)
	Small loss	66.08 (10.28)	66.84 (7.85)
	Control	37.00 (16.33)	44.44 (12.88)
Reaction time (ms)	Large win	243.75 (21.19)	232.52 (22.74)
	Small win	248.32 (28.45)	245.11 (26.32)
	Large loss	252.31 (19.71)	233.61 (22.03)
	Small loss	248.53 (30.24)	236.91 (21.69)
	Control	273.24 (39.22)	256.68 (39.94)
Amount gained (£)		28.87 (38.70)	57.29 (18.83)

s.d., Standard deviation.

**Fig. 2.** Patient ($n=20$) and healthy control ($n=12$) subjective visual analogue scale (VAS) scores for each condition outcome, as rated after reward outcome.

effect for large losses ($t_{1,31}=2.65$, $p<0.05$). Healthy participants (mean=57.29, s.d.=18.83) gained significantly more money than the patients (mean=28.87, s.d.=38.70, $t_{1,31}=2.37$, $p=0.024$). The CPZ-equivalent dose did not correlate with VAS or hit rate performance measures but did correlate with mean reaction time ($r=0.48$, $p=0.032$).

SW and VAS scores in the patient group

There were no significant correlations between average absolute hit or miss VAS scores, or VAS scores

subtracting control trial VAS scores, with SWN scores in any condition. Neither the mean nor the condition-specific reaction times correlated with SW (all $p>0.05$).

fMRI

Reward anticipation

Reward anticipation for all participants was associated with activity in several clusters covering the bilateral inferior frontal and superior temporal gyri, insula and ventral striatum, in addition to the medial frontal

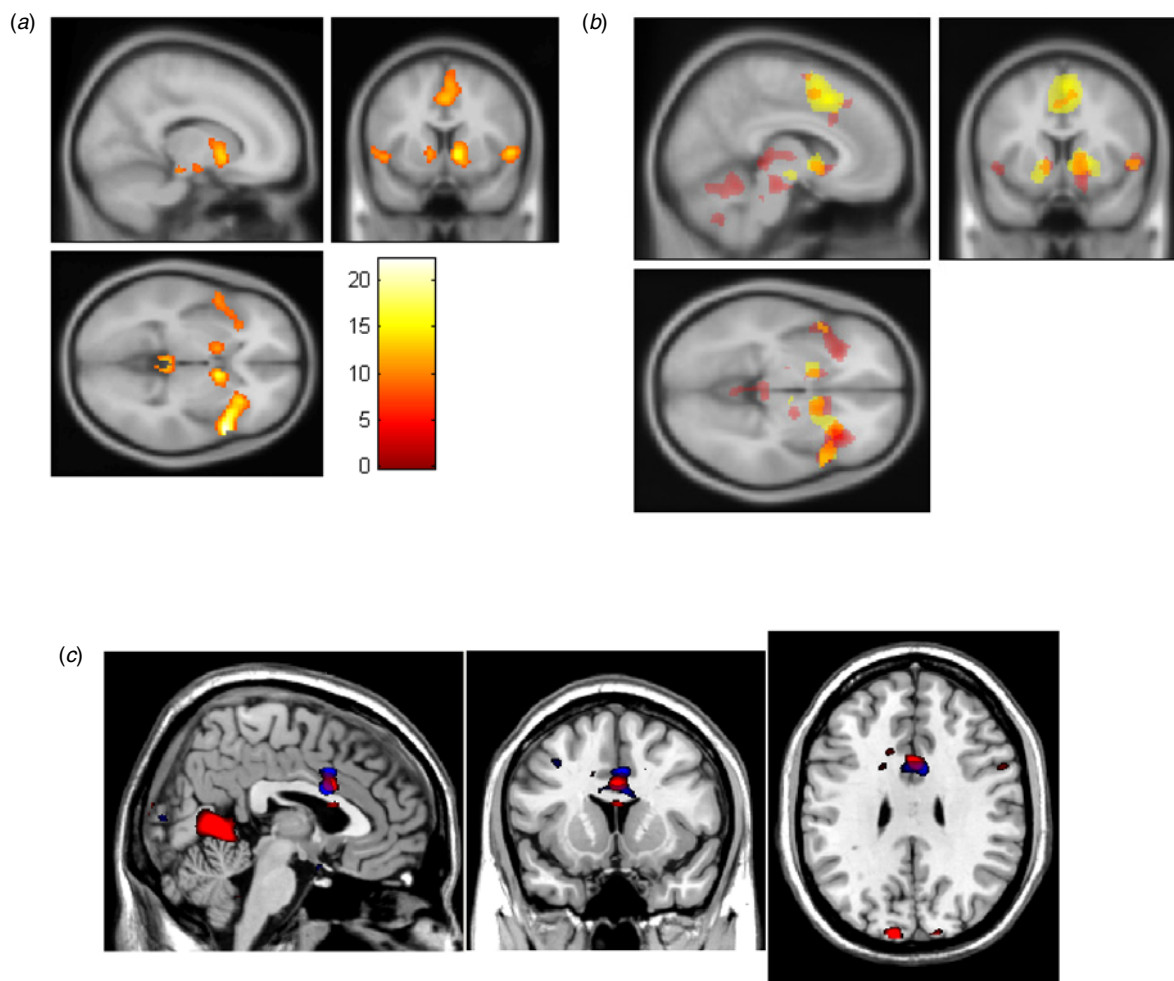


Fig. 3. (a) Activity related to anticipation of reward in all participants [$p < 0.05$, family-wise error (FWE)-corrected]. (b) Activation maps of common regions of activation for the two groups overlaid (threshold of $p < 0.001$ for illustration; yellow = healthy, red = schizophrenia). (c) The unique overlap of the SW-related anterior cingulate cortex (ACC) activation during anticipation (blue) and outcome (red) in the schizophrenia group. As shown, there is a clearly defined overlap at Talairach coordinates 2, 11, 27.

and cingulate gyri, left pre- and postcentral gyri, thalamic medial dorsal nuclei, right parahippocampal gyrus and left and right brainstem (Fig. 3a, $p < 0.05$, FWE-corrected; Fig. 3b shows separate overlaid group maps). There were no voxels showing a significant group \times reward interaction, even with a liberal threshold ($p < 0.001$, uncorrected) indicating no significant between-groups differences in brain region activation involved in reward anticipation.

Reward outcome

There was a significant main effect ($p < 0.05$, FWE-corrected) of reward at outcome in the right inferior parietal lobule, right middle and inferior frontal gyri, bilateral thalamus and cerebellum/declive, and a small region within the right superior temporal gyrus. There was no group \times condition interaction,

even with a liberal threshold ($p < 0.001$), indicating that the patients and healthy participants were not significantly different in terms of the brain regions involved in processing reward outcome.

SW in schizophrenia

Within the patient group a single model incorporating both anticipation and outcome phases of the task revealed that SW was related to activation within the ACC in both ROI ($p < 0.0125$, FWE-corrected) and whole-brain analyses ($p < 0.05$, FWE-corrected; see conjunction image in Fig. 3c). The relationship between brain activation and SW across phases was unique to the ACC and was not seen in any other brain region. This relationship was robust across phases of reward anticipation as shown by separate analyses of these phases.

Table 2. Peak voxels and *p* values ($p < 0.05$, FWE-corrected) that held a significant association with the SW covariate during anticipation and outcome

Phase	Hemisphere	Region	Talairach coordinates	<i>F</i>	Peak <i>p</i> (FWE-corrected)
Anticipation	R	Inferior occipital gyrus	36, -88, -4	6.25	0.001
	L	Lingual gyrus	-20, -97, -2	6.05	0.001
	R	Anterior cingulate	6, 9, 24	5.80	0.003
	R	Precentral gyrus	42, -5, 59	5.79	0.003
	R	Middle frontal gyrus	57, 8, 38	5.52	0.006
	L	Middle occipital gyrus	-30, -95, 0	5.49	0.007
	L	Middle frontal gyrus	-32, -3, 59	5.06	0.024
Outcome	L	Cuneus/occipital lobe	-10, -82, 36	7.20	<0.001
	R	Lingual gyrus	18, -76, -6	7.19	<0.001
	R	Cuneus/occipital lobe	10, -94, 20	6.95	<0.001
	L/R	Posterior cingulate	4, -56, 2	5.62	<0.005
	L/R	Anterior cingulate	2, 12, 28	4.97	<0.050

FWE, Family-wise error, SW, subjective well-being; R, right; L, left.

Anticipation and SW

Several cortical areas were significantly associated with SW ($p < 0.05$, FWE-corrected), including the ACC (ROI level, $p < 0.01$, FWE-corrected; whole-brain analysis, all peak voxels $p < 0.05$, FWE-corrected; Table 2). In the whole-brain analyses significant associations were also apparent within the occipital lobe and bilateral middle frontal gyri.

Outcome and SW

ROI analyses revealed a significant association with ACC activation ($p < 0.01$, FWE-corrected) but not cingulate gyrus, caudate or ventral striatum masks. In the whole-brain analysis, several regions were significantly associated with SW in the outcome phase ($p < 0.05$, FWE-corrected), including the ACC and the posterior cingulate (negatively, peak voxel $p < 0.01$, FWE-corrected). As these additional regions activated were not hypothesized, we list them in Table 2 but do not venture a further interpretation at this time. Subsequent *post-hoc* analysis showed that the β coefficients for the association of SW with miss outcomes were significantly greater than for hit trials ($F_{1,9} = 5.99$, $p < 0.05$). To discount the possibility that reaction times to stimuli may impact on BOLD response in this study, a final analysis was conducted and showed that reaction times did not correlate with activity in the ACC region associated with SW scores. In addition, to show that the reward and SW effects are not confounded by medication, a further *post-hoc* analysis demonstrated that neither reward-related activity nor activity in regions that showed an association with SW were associated with CPZ-equivalent dose

($p < 0.001$, uncorrected). There was ample variation in CPZ-equivalent dose for a relationship to be detected had one been present.

Mood and reward processing

A final *post-hoc* analysis was conducted to investigate the relationship between mood (as measured by the BDI) and reward-related activation in the patient group to determine the specificity of SW to dACC activation. The SW vector was replaced by the BDI vector and the analyses were rerun. No regions within the ROIs correlated significantly with BDI score during the anticipation phase; however, during the outcome phase the dACC was significantly correlated with neural activation as shown by both ROI and whole-brain analyses ($p < 0.05$, FWE-corrected; locus at 2, 12, 26).

Healthy participants and SW

In healthy participants there were no significant associations with SW either in the whole-brain analysis in, or near, the dACC region, or in the ROI analyses. Between-group analyses confirmed that the relationship between SW and activity in the dACC was significantly greater in patients than in healthy participants ($p < 0.0001$).

Discussion

This study examined the neural correlates of SW in schizophrenia using an MID reward paradigm to test the hypothesis that reward network activity is associated with SW. As anticipated, the level of SW was

significantly lower overall in the patients compared to the healthy controls. Reward-related neural activity in both groups during anticipation of reward was consistent with that seen in previous studies and involved the insula, ventral striatal and supplementary motor/motor area activity. Both healthy participants and patients demonstrated good discrimination of reward outcome as shown by VAS ratings, supporting the fact that cues and outcomes were rewarding in nature.

As expected, VS activity represented anticipation to rewarding stimuli, consistent with other studies (e.g. Knutson *et al.* 2001), yet there were no significant differences in VS activity (whole-brain or ROI) between the patients and healthy volunteers. Previous studies have shown that patients treated with the newer atypical antipsychotics at appropriate doses show 'normalized' VS reward-related activity relative to healthy participants (Juckel *et al.* 2006; Schlagenhauf *et al.* 2007; Abler *et al.* 2008), potentially reflecting a putative normalizing effect of these medications on dopaminergic transmission.

We anticipated that activation of the reward network would underpin SW scores. In line with this, a dorsal region of the ACC was significantly associated with SW scores; however, contrary to expectation this was observed in both the anticipation and outcome phases rather than the anticipation period alone. The dACC has been linked to a range of cognitive processes, such as attention, cognitive control, conflict monitoring, response inhibition, self-reflection and set-switching capacity, and is also involved in the modulation of reward processing through its widespread projections to affective, cognitive and motor cortical areas (see Haber & Knutson, 2010). Critchley *et al.* (2001) reported that a distinct region of the anterior cingulate (slightly more anterior than the locus reported here) was commonly activated by both uncertainty and arousal in a reward task, suggesting that the dACC represents both expected reward and motivation. Considerable evidence shows that the ACC is active during reward anticipation (e.g. Kirsch *et al.* 2003; Knutson *et al.* 2008) and single-cell neurons in the dACC in humans have been shown to 'code' reward properties while dACC ablation disrupts reward-related behavioural adjustment (Williams *et al.* 2004). The dACC thus plays a key role in forming associations between reward and appropriate action (Haber & Knutson, 2010). As activity in this region is associated with SW in both the anticipatory and outcome phases, it suggests that dACC may represent the motivational significance of current actions or cognitions (Ochsner *et al.* 2001) and integrate rewarding environmental cues, behaviour and outcome.

Absent dACC activation has been reported in patients with schizophrenia during anticipation of

reward (Quintana *et al.* 2004; Abler *et al.* 2008), and the effects of olanzapine in healthy participants reported by Abler *et al.* (2007) extend to include dorsal anterior cingulate activity (proximally located to the peak voxel that correlated with SW in this study), which was one of three regions, including the ventral striatum, reduced by olanzapine compared to placebo during reward-related processing. Healthy volunteers also show reduced anterior cingulate activity after AMPT-related dopamine depletion (da Silva Alves *et al.* 2010). Hence, these compounds, which act to reduce dopaminergic transmission, also reduce reward-related dorsal anterior cingulate activity.

ACC activity has also been linked with depression (Bench *et al.* 1992) and more rostrally and ventrally with anhedonia in healthy participants (Keedwell *et al.* 2005; Harvey *et al.* 2007). Patients with major depression have been shown to differ from healthy subjects in the relationship between valence of reward anticipation and ACC but not nucleus accumbens activity (Knutson *et al.* 2008); and those who respond clinically to antidepressant medication show increases in ACC D2 receptor binding that is greater than increases in VS binding (Larisch *et al.* 1997). Hence, together there may be a strong link between ACC functioning and a broader sense of well-being.

The strong relationship between SW and dACC activation was not seen in the exploratory analysis in the healthy participants. In healthy individuals, although acute AMPT reduces reward-network activation, it had no significant effect on SWN scores (da Silva Alves *et al.* 2010) despite effects on dACC and striatal activation. The specificity of this association to patients may be attributable to the gross differences in dopaminergic reward system functioning in schizophrenia relative to healthy people *per se*, or alternatively or additionally through the further impact that antipsychotic medication has on these systems. It may also be the case that the scale is more ecologically valid in patient groups, following neuroleptic administration, the sequelae of which the scale has been designed to measure, or, with respect to the lack of association between dopamine changes and SW reported by da Silva Alves *et al.* (2010), that the scale is not sensitive to drug effects over a short period of time. The sample size in the healthy group was also small, which may account for lack of positive association, and the SWN item questions are of a more general nature rather than would relate to acute and short-term 'state' effects. Further resolution of this discrepancy is beyond the scope of this paper, but future research should extend examination of the neural correlates of SW in the healthy population and in a larger group.

It was proposed that SW must have a dopaminergic foundation to account for the relationship between

reduced SW and antipsychotic medication. Although there is no direct evidence linking the two in the present study, there is support for an effect of antipsychotic action on ACC function. Antipsychotic medication is associated with reduced ACC regional cerebral blood flow (rCBF) in patients with schizophrenia (Miller *et al.* 1997), whereas impaired activation in a similar dACC location in schizophrenia patients can be restored with administration of the D1/2 agonist apomorphine (Dolan *et al.* 1995), demonstrating that there is a significant neuromodulatory effect of dopamine on ACC functioning. Although, without data on receptor occupancy, it is not possible in the context of this study to report conclusively that low SW leads to attenuated engagement of the ACC in reward processing, the data suggest an association that warrants further investigation.

An association between estimated dopamine D2R occupancy ('fitting' medication dose to dopamine receptor occupancy data) and positive and negative affect in schizophrenia has been reported by Lataster *et al.* (2010) using a daily experiential sampling method. Greater estimates of receptor occupancy were associated with a worsening of feelings of positive and negative affect, supporting the link between dopamine and subjective experience and adding ecological validity to the present and other studies that investigated subjective experience using more general, 'offline' questionnaires.

We did not find the anticipated correlation between SW and VS activation based on earlier data linking antipsychotic medication with impairments in VS functioning. This may be due to the VS response to reward in the patient group being unimpaired. As patients had lower SW scores but unimpaired VS activity, this implicitly suggests that VS functioning does not underpin SW. Elsewhere, Mizrahi *et al.* (2009) reported an association between VS dopamine D2 receptor blockade and SW but only in patients receiving conventional antipsychotics, and not those receiving aripiprazole. In patients taking aripiprazole, there was a wide range of SW scores (including low scores), at the same time as homogeneously high VS D2 receptor blockade across the group, again suggesting that SW is not simply reducible to VS D2 receptor blockade. Using positron emission tomography (PET), Mizrahi *et al.* (2007) showed that temporal cortex D2 receptor blockade was more strongly associated with SW than striatal blockade, again indicating that the link between striatal function and SW is not encapsulated. Lastly, studies that find associations between SW and VS activity (e.g. Mizrahi *et al.* 2009) generally only investigated striatal (and cerebellar) regions in the first instance. Investigations of other extrastriatal regions, such as the ACC, may reveal that the activity

in these regions provides a fuller account of SW. Despite previous links between SW and VS activity and other reward-network regional dopamine binding, and medication effects, this study has demonstrated a functional mechanism in SW reward processing *per se*.

Limitations

Although the SWN shows good inter-rater reliability and face validity, non-specific biases in completing self-relevant questionnaires may impact SW ratings. Monetary reward was only representational; participants received a (lower) amount than the trials indicated, which may have impacted on the rewarding saliency of the cues. However, there is little to suggest this was the case given that VS activity was linked to reward in the primary analysis and varied by magnitude and valence of reward. Although mean ages were not significantly different, an improvement would have been to better age match the groups. The CPZ-equivalent dose was associated with mean reaction time but this is most probably attributable to sedative effects of antipsychotic medication on speed of reactions. CPZ-equivalent doses were not associated with SWN, subjective VAS ratings or hit rates.

There was a moderate correlation between SWN and BDI scores. Subsequent analysis of the neural correlates of BDI scores revealed some of the pattern of findings that SW held with reward-related neural activity, although this was limited to the outcome and not the anticipation phase. Together this suggests that SW and depression may be overlapping constructs and that dACC activity may be related to a broader sense of well-being. However, SWN scores are not just reducible to BDI scores; a substantial proportion (46%) of the variance in SWN scores remained unexplained by BDI scores, supporting the utility of conducting independent analyses. Indeed, SW is the central predictor of medication compliance (Karow *et al.* 2007) and constitutes a distinct outcome measure in schizophrenia (Lambert & Naber, 2004); hence, investigating SW as a specific target of research is warranted. Examination of the items on these scales also reveals that they are founded on different constructs. The SWN focuses on social integration, self-control, emotional regulation, and mental and physical functioning, which differ from the cognitive and affective components measured by the BDI. Additionally, there may be a causal relationship between mood and SW and this could be in either direction, hence future research should further examine the precise relationship between these measures and the potential dissociation between mood and SW with respect to anticipation and consumption of reward.

Patients acquired significantly less financial gain than healthy participants. There were no significant group differences in hit rate or reaction time to account for this; however, as a large cue results in a £5 gain or loss, then attaining winning outcomes on only a few additional trials could mean a large difference in the final amount won. Between-group VAS ratings were not significantly different although patients were less sensitive than the healthy group to suffering large losses. Lower sensitivity to negative feedback requires further investigation; however, Schlagenhaut *et al.* (2009) reported that patients but not healthy volunteers showed significantly attenuated VS signals in response to suffering loss outcomes compared to avoiding loss outcomes whereas there were no group differences after gaining or losing positive rewards. Patients with schizophrenia may be behaviourally and/or neurally less sensitive to negative outcomes and this may reflect disturbed error-signal processing, or speak to impairments in learning from feedback in schizophrenia (Averbeck *et al.* 2011).

Conclusions

Patients with schizophrenia showed reduced SW. Activation within a dorsal region of the ACC held a significant relationship with SW over both anticipation and outcome phases of a reward task that was not seen in the healthy participants. This could be due to greater disturbance of the broader dopaminergic reward system in schizophrenia or to medication effects. The ACC is involved in the integration of action and reward and one interpretation is that poor SW may result from a reduced coupling and integration of reward, action and outcome. Intuitively, a state in which there is decreased functional association or learning between reward, action and outcome could manifest an attenuation of sense of well-being if actions within a personal repertoire are not linked in a routine way to reward. Future research should examine the interaction between reward processes, D2 receptor blockade and SW to further determine the anatomical and neurochemical pathways underlying SW and identify suitable interventional targets.

Acknowledgements

This research was funded by a Medical Research Council (MRC) Strategic Award to S. Kapur. S. S. Shergill was funded by a European Research Council (ERC) Consolidator Grant, and supported by the Mental Health Biomedical Research Centre at the South London and Maudsley (SLAM) National Health Service (NHS) Foundation Trust and King's College London.

Declaration of Interest

S. S. Shergill, in the past 3 years, has received research grants from the MRC, Wellcome Trust and Higher Education Funding Council UK, and grant support from Glaxo Smith Kline and Hoffman La Roche for supervising Clinical Trials and is an advisory board member of the website mentalhealthcare.org.uk. S. Kapur has financial associations with: (Grant Support) AstraZeneca, Bristol-Myers Squibb, Glaxo Smith Kline; and has had consultant/scientific advisor/speaking engagements with AstraZeneca, Bioline, Bristol Meyers Squibb, Eli Lilly, Janssen (Johnson & Johnson), Lundbeck, NeuroSearch, Otsuka, Pfizer, Roche, Servier and Solvay Wyeth. J. Gilleen has no financial interests to declare.

References

- Abler B, Erk S, Walter H (2007). Human reward system activation is modulated by a single dose of olanzapine in healthy subjects in an event-related, double-blind, placebo-controlled fMRI study. *Psychopharmacology* **191**, 823–833.
- Abler B, Kammerer H, Frasch K, Spitzer M, Walter H (2008). Altered reward processing in schizophrenic patients treated with olanzapine. *Schizophrenia Research* **98** (Suppl.), 116.
- Averbeck B, Evans S, Chouhan V, Bristow E, Shergill SS (2011). Probabilistic learning and inference in schizophrenia. *Schizophrenia Research* **127**, 115–122.
- Barnes TR (1989). A rating scale for drug-induced akathisia. *British Journal of Psychiatry* **154**, 672–676.
- Beck AT, Steer RA, Ball R, Ranieri W (1996). Comparison of Beck Depression Inventories -IA and -II in psychiatric outpatients. *Journal of Personality Assessment* **67**, 588–597.
- Bench CJ, Friston KJ, Brown RG, Scott LC, Frackowiak RS, Dolan RJ (1992). The anatomy of melancholia – focal abnormalities of cerebral blood flow in major depression. *Psychological Medicine* **22**, 607–615.
- Chouinard G, Ross-Chouinard A, Annable L, Jones B (1980). The extrapyramidal symptom rating scale. *Canadian Journal of Neurological Sciences* **7**, 233–239.
- Critchley HD, Mathias CJ, Dolan RJ (2001). Neural activity in the human brain relating to uncertainty and arousal during anticipation. *Neuron* **29**, 537–545.
- da Silva Alves D, Schmitz N, Figue M, Abeling N, Hasler G, van der Meer J, Nederveen A, de Haan L, Linszen D, van Amelsvoort T (2010). Dopaminergic modulation of the human reward system: a placebo-controlled dopamine depletion fMRI study. *Journal of Psychopharmacology* **25**, 538–549.
- de Haan L, Lavalaye J, Linszen D, Dingemans PM, Booij J (2000). Subjective experience and striatal dopamine D(2) receptor occupancy in patients with schizophrenia stabilized by olanzapine or risperidone. *American Journal of Psychiatry* **157**, 1019–1020.
- Dolan RJ, Fletcher P, Frith CD, Friston KJ, Frackowiak RS, Grasby PM (1995). Dopaminergic modulation of impaired

- cognitive activation in the anterior cingulate cortex in schizophrenia. *Nature* **378**, 180–182.
- Friston KJ, Fletcher P, Josephs O, Holmes A, Rugg MD, Turner R** (1998). Event-related fMRI: characterizing differential responses. *NeuroImage* **17**, 30–40.
- Gard DE, Kring AM, Gard MG, Horan WP, Green MF** (2007). Anhedonia in schizophrenia: distinctions between anticipatory and consummatory pleasure. *Schizophrenia Research* **93**, 253–260.
- Haber SN, Knutson B** (2010). The reward circuit: linking primate anatomy and human imaging. *Neuropsychopharmacology* **35**, 4–26.
- Harvey PO, Pruessner J, Czehowska Y, Lepage M** (2007). Individual differences in trait anhedonia: a structural and functional magnetic resonance imaging study in non-clinical subjects. *Molecular Psychiatry* **12**, 767–775.
- Juckel G, Schlagenhauf F, Koslowski M, Filonov D, Wustenberg T, Villringer A, Knutson B, Kienast T, Gallinat J, Wrase J, Heinz A** (2006). Dysfunction of ventral striatal reward prediction in schizophrenic patients treated with typical, not atypical, neuroleptics. *Psychopharmacology* **187**, 222–228.
- Karow A, Czekalla J, Dittmann RW, Schacht A, Wagner T, Lambert M, Schimmelmann BG, Naber D** (2007). Association of subjective well-being, symptoms, and side effects with compliance after 12 months of treatment in schizophrenia. *Journal of Clinical Psychiatry* **68**, 75–80.
- Karow A, Naber D** (2002). Subjective well-being and quality of life under atypical antipsychotic treatment. *Psychopharmacology* **162**, 3–10.
- Kay SR, Fiszbein A, Opler LA** (1987). The positive and negative syndrome scale (PANSS) for schizophrenia. *Schizophrenia Bulletin* **13**, 261–276.
- Keedwell PA, Andrew C, Williams SCR, Brammer MJ, Phillips ML** (2005). The neural correlates of anhedonia in major depressive disorder. *Biological Psychiatry* **58**, 843–853.
- Kirsch P, Schienle A, Stark R, Sammer G, Blecker C, Walter B, Ott U, Burkart J, Vaitl D** (2003). Anticipation of reward in a nonaversive differential conditioning paradigm and the brain reward system: an event-related fMRI study. *NeuroImage* **20**, 1086–1095.
- Knutson B, Adams CM, Fong GW, Hommer D** (2001). Anticipation of increasing monetary reward selectively recruits nucleus accumbens. *Journal of Neuroscience* **21**, 159.
- Knutson B, Bhanji JP, Cooney RE, Atlas LY, Gotlib IH** (2008). Neural responses to monetary incentives in major depression. *Biological Psychiatry* **63**, 686–692.
- Knutson B, Gibbs SEB** (2007). Linking nucleus accumbens dopamine and blood oxygenation. *Psychopharmacology* **191**, 812–822.
- Lambert M, Naber D** (2004). Current issues in schizophrenia: overview of patient acceptability, functioning capacity and quality of life. *CNS Drugs* **18** (Suppl. 2), 5–17.
- Larisch R, Klimke A, Vosberg H, Loffler S, Gaebel W, Muller-Gartner HW** (1997). *In vivo* evidence for the involvement of dopamine-D2 receptors in striatum and anterior cingulate gyrus in major depression. *NeuroImage* **5** (Pt 1), 251–260.
- Lataster J, van Os J, de Haan L, Thewissen B, Bak M, Lataster T, Lardinois M, Delespaul PA, Myin-Germeys I** (2010). Emotional experience and estimates of D2 receptor occupancy in psychotic patients treated with haloperidol, risperidone, or olanzapine: an experience sampling study. *Journal of Clinical Psychiatry* **72**, 1397–1404.
- Maldjian JA, Laurienti PJ, Kraft RA, Burdette JH** (2003). An automated method for neuroanatomic and cytoarchitectonic atlas-based interrogation of fMRI data sets. *NeuroImage* **19**, 1233–1239.
- Mawlawi O, Martinez D, Slifstein M, Broft A, Chatterjee R, Heertum DR, Huang Y, Simpson N, Ngo K, Van Heertum R, Laruelle M** (2001). Imaging human mesolimbic dopamine transmission with positron emission tomography: I. Accuracy and precision of D(2) receptor parameter measurements in ventral striatum. *Journal of Cerebral Blood Flow and Metabolism* **21**, 1034–1057.
- Miller DD, Andreasen NC, O'Leary DS, Rezai K, Watkins GL, Ponto LL, Hichwa RD** (1997). Effect of antipsychotics on regional cerebral blood flow measured with positron emission tomography. *Neuropsychopharmacology* **17**, 230–240.
- Mizrahi R, Mamo D, Rusjan P, Graff A, Houle S, Kapur S** (2009). The relationship between subjective well-being and dopamine D2 receptors in patients treated with a dopamine partial agonist and full antagonist antipsychotics. *International Journal of Neuropsychopharmacology* **12**, 715–721.
- Mizrahi R, Rusjan P, Agid O, Graff A, Mamo DC, Zipursky RB, Kapur S** (2007). Adverse subjective experience with antipsychotics and its relationship to striatal and extrastriatal D2 receptors: a PET study in schizophrenia. *American Journal of Psychiatry* **164**, 630–637.
- Naber D** (1995). A self-rating to measure subjective effects of neuroleptic drugs, relationships to objective psychopathology, quality of life, compliance and other clinical variables. *International Clinical Psychopharmacology* **10** (Suppl. 3), 133–138.
- Naber D, Karow A, Lambert M** (2005). Subjective well-being under the neuroleptic treatment and its relevance for compliance. *Acta Psychiatrica Scandinavica. Supplementum* **427**, 29–34.
- Naber D, Moritz S, Lambert M, Pajonk FG, Holzbach R, Mass R, Andresen B** (2001). Improvement of schizophrenic patients' subjective well-being under atypical antipsychotic drugs. *Schizophrenia Research* **50**, 79–88.
- Nelson HE, Willison JR** (1991). *The Revised National Adult Reading Test (NART): Test Manual*. NFER-Nelson: Windsor.
- Ochsner KN, Kosslyn SM, Cosgrove GR, Cassem EH, Price BH, Nierenberg AA, Rauch SL** (2001). Deficits in visual cognition and attention following bilateral anterior cingulotomy. *Neuropsychologia* **39**, 219–230.
- Quintana J, Wong T, Ortiz-Portillo E, Marder SR, Maziotta JC** (2004). Anterior cingulate dysfunction during choice anticipation in schizophrenia. *Psychiatry Research* **132**, 117–130.
- Schlagenhauf F, Juckel G, Koslowski M, Kahnt T, Knutson B, Dembler T, Kienast T, Gallinat J, Wrase J, Heinz A** (2007). Reward system activation in schizophrenic

- patients switched from typical neuroleptics to olanzapine. *Psychopharmacology* **196**, 673–684.
- Schlagenhauf F, Sterzer P, Schmack K, Ballmaier M, Rapp M, Wrase J, Juckel G, Gallinat J, Heinz A** (2009). Reward feedback alterations in unmedicated schizophrenia patients: relevance for delusions. *Biological Psychiatry* **65**, 1032–1039.
- Schott BH, Minuzzi L, Krebs RM, Elmenhorst D, Lang M, Winz OH, Seidenbecher CI, Coenen HH, Heinz HJ, Zilles K, Düzel E, Bauer A** (2008). Mesolimbic functional magnetic resonance imaging activations during reward anticipation correlate with reward-related ventral striatal dopamine release. *Journal of Neuroscience* **28**, 14311–14319.
- Simpson GM, Angus JW** (1970). A rating scale for extrapyramidal side effects. *Acta Psychiatrica Scandinavica Supplementum* **212**, 11–19.
- Voruganti L, Awad AG** (2004). Neuroleptic dysphoria: towards a new synthesis. *Psychopharmacology* **171**, 121–132.
- Voruganti L, Slomka P, Zabel P, Costa G, So A, Mattar A, Awad G** (2001). Subjective effects of AMPT-induced dopamine depletion in schizophrenia: correlation between dysphoric responses and striatal D(2) binding ratios on SPECT imaging. *Neuropsychopharmacology* **25**, 642–650.
- Vothknecht S, Meijer C, Zwinderman A, Kikkert M, Dekker J, van Beveren N, Schoevers R, de Haan L; for GROUP (Genetic Risk and Outcome of Psychosis)** (2012). Psychometric evaluation of the Subjective Well-being Under Neuroleptic Treatment Scale (SWN) in patients with schizophrenia, their relatives and controls. *Psychiatry Research* **206**, 62–67.
- Williams ZM, Bush G, Rauch SL, Cosgrove GR, Eskandar EN** (2004). Human anterior cingulate neurons and the integration of monetary reward with motor responses. *Nature Neuroscience* **7**, 1370–1375.