

Research Article

Cite this article: Euclides L, De La Torre GM, Dudczak AC, Melo FTdeV, Campião KM (2022). Ecological specificity explains infection parameters of anuran parasites at different scales. *Parasitology* **149**, 646–653. <https://doi.org/10.1017/S0031182022000087>

Received: 21 October 2021
Revised: 30 December 2021
Accepted: 13 January 2022
First published online: 26 January 2022

Key words:

Ecological fitting; host traits; parasite prevalence; parasite specificity; phylogenetic specificity

Author for correspondence:

Lorena Euclides,
E-mail: lorena.euclides@gmail.com

Ecological specificity explains infection parameters of anuran parasites at different scales

Lorena Euclides¹ , Gabriel M. De La Torre¹ , Amanda Caroline Dudczak¹ , Francisco Tiago de Vasconcelos Melo²  and Karla Magalhães Campião¹ 

¹Department of Zoology, Faculty of Biological Sciences, Federal University of Paraná, Curitiba, Paraná 81531-980, Brazil and ²Laboratory of Cell Biology and Helminthology ‘Prof. Dr. Reinalda Marisa Lanfredi’, Institute of Biological Sciences, Federal University of Pará, Belém, Pará 66075-110, Brazil

Abstract

Understanding the determinants of parasite infection in different hosts is one of the main goals of disease ecology. Evaluating the relationship between parasite–host specificity and infection parameters within host communities and populations may contribute to this understanding. Here we propose two measures of specificity that encompasses phylogenetic and ecological relatedness among hosts and investigated how such metrics explain parasite infection prevalence and mean infection intensity (MII). We analysed the parasites associated with an anuran community in an area of Atlantic Forest and used the number of infected hosts and the net relatedness index to calculate the phylogenetic and ecological specificities of the parasites. These specificity measures were related to infection metrics (prevalence and MII) with generalized linear mixed models at community (all hosts) and population (infected host species) scales. Parasite prevalence was correlated with the number of infected hosts and, when considering only multi-host parasites, was positively related to parasite ecological specificity at community and population scales. Thus, parasite species have similar prevalences in ecologically closer hosts. No relationship was found for parasite MII. Incorporating ecological characteristics of hosts in parasite specificity analyses improves the detection of patterns of specificity across scales.

Introduction

Identifying patterns in host–parasite relationships can help unveil what shapes such interactions, enabling an understanding of how parasites diversify and circulate among different hosts (Fountain-Jones *et al.*, 2017). The use of different host species by parasites, i.e. their niche breadth, is an intrinsic property described as host specificity (Poulin, 2006). Parasite host specificity is not inflexible and can vary according to the composition of host assemblage and the environment (Fountain-Jones *et al.*, 2017; Saldaña-Vázquez *et al.*, 2019). Thus, some parasite species may be specialists or generalists according to ecological context. The success of parasite association with different hosts within a community or population is generally measured through parameters such as infection prevalence and intensity. Similar, to host specificity, such extrinsic infection parameters may vary according to ecological context and the observed scale.

Despite there being numerous studies reporting on how host and environment affect infection prevalence, intensity and host specificity (Poulin, 1996, 2007; Poulin and Guegan, 2000), little is known about how such parasite infection properties are related to each other. This knowledge is elementary to the identification of patterns in host–parasite interactions (Cooper *et al.*, 2012) and to shedding new light on how they may be affected by host characteristics. Considering that host evolutionary history and functional traits may be related to variation in the expression of extrinsic characteristics of parasites (Fountain-Jones *et al.*, 2017; Saldaña-Vázquez *et al.*, 2019), assessing parasite host specificity and its relationship with infection parameters is crucial to understanding parasite establishment in host communities and to identifying potential host shifts (Fountain-Jones *et al.*, 2017; Saldaña-Vázquez *et al.*, 2019).

The evolutionary history of hosts can influence the dynamics of parasite communities and populations (Barrett *et al.*, 2008; Lutz *et al.*, 2015), and can explain the infection of multiple hosts by parasites, i.e. their specificity, through the sharing of phenotypic similarities and phylogenetically conserved resources among hosts (de Oliveira *et al.*, 2019; Fecchio *et al.*, 2019). Thus, phylogenetic relationships among hosts can reflect parasite specificity, and the success of parasite colonization and establishment will be reflected in infection metrics. Similarly, host functional traits also affect their interactions with parasites (Dobson *et al.*, 2008; Kamiya *et al.*, 2014). Host body size is a known predictor of host importance to the success of host–parasite associations, with several studies reporting that larger hosts have a positive relationship with parasite infection parameters (Poulin, 1996; Kamiya *et al.*, 2014; Campião *et al.*, 2015; Johnson *et al.*, 2019). Experimental studies have shown that

host body size is positively related to their attractiveness to parasites, thus influencing parasite choice (i.e. realized infection) of certain hosts when multiple host species are available (Johnson *et al.*, 2019). Host attractiveness to parasites is also mediated by chemical signs and behaviour (Haas, 2003). Moreover, host habitat use is another factor that can potentially influence the diversity and composition of parasite communities, as it directly influences the scale of exposure to infective stages (Koprivnikar *et al.*, 2017; Leung and Koprivnikar, 2019; Euclides *et al.*, 2021). Although both body size and habitat may be evolutionarily determined, such traits may not present a phylogenetic signal when analysed from a community perspective (Blomberg *et al.*, 2003; Pavoine *et al.*, 2014), because the assembling of local communities may result in a heterogeneous pool of sympatric species. In this context, assessing the host specificity of parasite species from an ecological or functional perspective can provide new information about the role of non-phylogenetically related filters in the establishment of parasites in a host community (Clark and Clegg, 2017).

Anuran species represent a good model to assess patterns of host use by parasites (Brooks *et al.*, 2006; Hamann *et al.*, 2013; Johnson *et al.*, 2013) since they are a species-rich group comprising high evolutionary distinctiveness and a great diversity of ecological traits (Jetz and Pyron, 2018; Womack and Bell, 2020). Their parasite communities result from evolutionary and/or ecological aspects (Poulin and Morand, 2000; D’Bastiani and Campião, 2021), and analysing the relationship between parasite infection and evolutionary and ecological characteristics can contribute to disentangling how these two factors influence the distribution and abundance of parasites in different hosts (Bongers and Ferris, 1999; Hechinger *et al.*, 2007). In this context, the Atlantic Forest is a heterogeneous environment with a great diversity of anuran species (Ribeiro *et al.*, 2009) that provides variable ecological and phylogenetic opportunities for anuran–parasite interaction. Here, we assess parasite infection of anuran species from the Atlantic Forest, and the relationship between parasite host specificity and infection prevalence and mean intensity. We propose two measures of parasite specificity based on the phylogenetic and ecological relatedness of infected host species and analysed how such indexes influence parasite infection prevalence and intensity at both community (all hosts) and population (infected host species) scales.

Materials and methods

Host collection and parasite identification

Anurans were collected in Marumbi State Park (Mananciais da Serra), state of Paraná, southern Brazil (25°29′31.9″S; 48°59′36.8″W). The area has a subtropical climate and is composed of rainforests of typical Atlantic Forest formations, such as ombrophilous forest, which presents trees and shrubs in association with ferns and terrestrial bamboos (Scheer and Blum, 2011), in addition to *Araucaria angustifolia*, the dominant tree that distinguishes this type of forest (Reginato and Goldenberg, 2007; Scheer and Blum, 2011). Anuran collections, employed visual and auditory active search techniques to find the target species (Crump and Scott Jr., 1994). A total of 213 individual anurans (135 males and 78 females, all adults) were captured by hand. Field sampling occurred in the warm and rainy seasons from October 2018 to February 2019. Captured specimens were transported to the laboratory where they were measured for snout-vent length and classified according to habitat use as arboreal and/or terrestrial and/or semi-aquatic (Supplementary Table 1), based on Moen *et al.* (2016) and Haddad *et al.* (2013). A total of 11 anuran species of six families of anurans (Brachycephalidae, Hylodidae, Hylidae,

Leptodactylidae, Odontophrynidae and Bufonidae) were analysed. The sampled anurans varied in body size and occupied arboreal, semi-aquatic and terrestrial habitats (Supplementary Table 1).

The anurans were euthanized with 4% Lidocaine, following the Federal Council of Biology (CFBIO – Resolution 308), and then necropsied by longitudinal incision along the antero-posterior axis for the collection of parasites. All organs of the gastrointestinal tract, plus lungs, kidneys, bladder and abdominal cavity, of the hosts were examined. Anuran nomenclature was updated according to the American Museum of Natural History (Frost, 2021). The collected specimens were deposited at the Museum of Natural History Capão da Imbuia in Curitiba, Paraná, Brazil.

Following anuran dissections, all parasites were collected and fixed in 70% ethyl alcohol. For identification, temporary slides were mounted for all specimens. Nematodes were clarified with Aman’s lactophenol and acanthocephalans with lactic acid, while platyhelminths were subjected to hydrochloric-carminine staining (described by Amato and Amato, 2010). The specimens were preserved in 70% ethyl alcohol and deposited in the Invertebrate Collection of the Federal University of Paraná. Parasite nomenclature follows Anderson *et al.* (2009) for Nematoda, Amin (1985) for Acanthocephala and Khalil *et al.* (1994) for Cestoda.

Infection parameters and host specificity metrics

We used two infection parameters to describe the populations of parasite taxa: parasite prevalence and mean infection intensity (MII). Each of these metrics was calculated for two different scales: within the anuran community and in the population of infected host species. For prevalence at the community scale, the number of hosts infected by a species of parasite was divided by the total anuran sample (213 anurans). For the population scale, we considered all individuals of the species of hosts infected divided by the total number of hosts, that latter combining individuals of the populations of the different infected species. MII at the community scale is the mean number of parasite specimens found in infected hosts, regardless of host species, whereas MII at the population scale is the mean number of parasites within the total number of individuals of an infected host species (Bush *et al.*, 1997).

The calculation of host phylogenetic specificity used the anuran phylogenetic tree provided by Jetz and Pyron (2018), pruned based on the anuran species sampled using the ‘match-phylo.data’ function (picante package, Kembel *et al.*, 2010). A distance matrix among the sampled anuran species was created based on phylogenetic relatedness, which was used to calculate the phylogenetic specificity measure for the host species infected by each parasite taxa with the ‘ses.mpd’ function (picante package, Kembel *et al.*, 2010).

Anuran functional traits, namely snout-vent length and habitat, were used to determine ecological specificity. The first is related to body size, a trait that directly affects parasite establishment (Kamiya *et al.*, 2014), while the latter reflects infection opportunity due to exposure to parasite species, since different habitats can restrict or facilitate parasite–host encounters (Anderson, 2000; D’Bastiani *et al.*, 2020). Snout-vent length is a continuous variable, whereas habitat comprises three binomial variables (presence/absence for arboreal, terrestrial and semi-aquatic), with anuran species being able to be present in more than one habitat. For the calculation of distance of variables of different statistical types, an ecological dataset was first prepared, based on mixed-variables coefficient of distance (Pavoine *et al.*, 2009), and then a distance matrix was generated using modified Gower distance (Dray and Dufour, 2007) to represent ecological

dissimilarity among anuran hosts. The same procedure used to calculate phylogenetic host specificity was then employed but using the host ecological distance matrix instead of the host phylogenetic distance matrix (Pavoine and Bonsall, 2011).

It is worth noting that anuran functional traits were tested for phylogenetic signal using the “phylosignal” function (picante package; Kembel *et al.*, 2010). Based on these analyses, we found no phylogenetic clustering for any anuran functional traits, with the exception of arboreal habitat (because all hylids are arboreal). Nonetheless, we also did not find the host phylogenetic distance matrix and the host ecological distance matrix to be correlated (Supplementary Script), so we considered both host specificity indexes as suitable to perform statistical analysis.

We used three metrics to calculate host specificity for each parasite taxa: number of host species, host phylogenetic specificity and host ecological specificity. The first metric is simply the number of host species infected by a given parasite taxa, whereas the latter two were calculated based on the net relatedness index (NRI) among the infected host species (Webb, 2000). The NRI approach is commonly used in ecological studies to assess the amount of phylogenetic and ecological information in a given community (Webb, 2000; Webb *et al.*, 2008). These analyses determine whether a community is formed by phylogenetically closely or distantly related species (high or low phylogenetic NRI; Webb *et al.*, 2008). Similarly, NRI also determines whether a community has ecologically redundant or divergent species (high or low ecological NRI; Pavoine and Bonsall, 2011). Phylogenetic and ecological specificity metrics were not calculated for 11 parasite species (out of the 25) because they were found infecting only one host species, and these values are based on the distance between host species.

The NRI varies from 1.96 to -1.96 , which represents more specialist or more generalist than expected by chance, respectively. Thus, higher phylogenetic NRI values correspond to parasites infecting closely related host species, which are thus considered phylogenetic specialists. In contrast, lower phylogenetic NRI values correspond to parasites infecting distantly related host species, which are thus considered as phylogenetic generalists. We opted to use NRI to calculate both host phylogenetic specificity and host ecological specificity. This approach avoids any spurious correlation with the number of host species, and overcomes bias related to differences in sample size among anuran species. The NRI is based on a null model comparison (Miller *et al.*, 2017), thus null models were generated through 1000 randomizations of host species names in both the ecological distance matrix and the phylogenetic distance matrix, the values of which were then compared to observed values of the respective host specificity metric. Comparisons were made by subtracting the random mean from the observed values and dividing the result by the random standard deviation, with random values being represented by zero. Values below zero indicate low host specificity (phylogenetically distantly related and/or ecologically distinct hosts), whereas values above zero indicate high host specificity (the parasite tends to infect phylogenetically closely related and/or ecologically similar hosts).

Statistical analysis

To test if host specificity affects the parasite infection metrics at both community (all host species) and population (infected host species) scales, we considered all analysed parasite taxa and only multi-host parasite species. To do so, we created different datasets: (i) two based on the infection metrics (prevalence and MII) at the community scale, with columns presenting these parameters for each parasite species, and (ii) two based on the infection metrics at the scale of populations of infected hosts, with

rows presenting the values of prevalence and MII for a parasite species in the infected host populations.

We then tested the effects of taxonomic, ecological and phylogenetic host specificity on the infection metrics. For taxonomic specificity, we tested the effect of the number of host species on prevalence and MII at community scale and at the scale of populations of infected hosts using the complete dataset for both. We then created a data subset to analyse parasite species that infect two or more host species (multi-host parasites), and analysed whether the number of host species, phylogenetic host specificity and ecological host specificity determine the prevalence and MII of multi-host parasites. We used generalized linear models (GLM) for the analyses at the community scale and generalized linear mixed models (GLMM) at the scale of populations of infected host. Different error distribution families were applied for each model to respect the statistical assumptions (Zuur *et al.*, 2009). For the GLM, we used beta regression for the models of prevalence (Ferrari and Cribari-Neto, 2004) and linear regression (Gaussian family) for the models of MII. For the GLMM, we used a binomial family error distribution in the models analysing prevalence and a Gaussian family error distribution to analyse parasite MII. We used this distribution family for both the total dataset and the multi-host species dataset, and also considered host species and parasite species as random variables in all population scale analyses. For each model, we assessed the significance of each variable using analysis of variance (ANOVA) considering $\alpha < 0.05$.

Prior to running the models, we calculated the \log_{10} of MII values for better model fitting. We also validated all models based on residual distribution, leverage and Cook-distance inflation factor (Zuur *et al.*, 2009). We report the estimated coefficients and 95% confidence intervals (CI), and consider significant those variables with a 95% CI that does not encompass zero. We used R software version 4.0.0 for all analyses (R Core Team, 2020), the scripts of which can be found in Supplementary material.

Results

The parasite community comprised 27 parasite taxa belonging to three taxonomic groups: Acanthocephala, Nematoda and Platyhelminthes. Acanthocephala was represented by one taxon of Centrorhynchidae and Platyhelminthes by one taxon of Cestoda. Nematoda was the most representative taxonomic group with 25 taxa.

Host phylogenetic specificity ranged between -1.582 and 1.621 , with parasite species that occurred in phylogenetically close hosts (e.g. *Oxyascaris cf. caudacutus*) and parasites species that occurred in phylogenetically distant hosts (e.g. *Schrankiana formosula*). The same was observed for host ecological specificity, as some species occurred in ecologically close hosts (such as *Rhabdias fuelleborni* with ecological NRI = 2348) and others occurred in ecologically distant hosts (such as *Cosmocerca parva* with ecological NRI = -0.841 , *Oswaldocruzia* sp.1 with ecological NRI = -0.819 and *S. formosula* with ecological NRI = -0.791) (Table 1).

The analysis of all parasite taxa, both single and multi-host, indicated a relationship between the number of infected hosts and infection parameters. Parasite prevalence was affected by the number of hosts at both community (all hosts) and population (infected host species) scales. However, the effect of this predictor variable presented opposite patterns: parasite prevalence was positively related to the number of host species in the community ($\beta = 0.22$, 95% CI = $0.07-0.38$), whereas this relationship was negative in the populations of infected hosts ($\beta = -0.31$, 95% CI = -0.58 to -0.03). This means that when using the number of associated host species as a specificity measure, the prevalences of

Table 1. Diversity, specificity and infection parameters of parasites associated with 11 anuran species of the Atlantic Forest. We report the number of associated hosts (No. host), net relatedness index (NRI) values for the phylogenetic and ecological specificity of the parasites, and parasite prevalence and mean intensity of infection (MII) at the community (all hosts) and population (infected host species) scales

Parasites	No. host	Phylogenetic NRI	Ecological NRI	Prevalence		MII	
				Community	Population	Community	Population
Acanthocephala							
Centrorhynchidae gen. sp.	6	-0.823	-0.722	0.05	0.35	0.09	1.50
Nematoda							
Atractidae							
<i>Schrankiana formosula</i>	2	-1.582	-0.791	0.03	24.33	0.20	647.87
Cosmocercidae							
<i>Aplectana macintoshii</i>	2	0.447	2.456	0.07	0.48	0.30	6.86
<i>Aplectana travassosi</i>	1	-	-	0.07	6.51	0.75	92.53
<i>Cosmocerca brasiliensis</i>	4	-1.184	1.290	0.13	0.81	0.33	5.96
<i>Cosmocerca parva</i>	4	0.126	-0.841	0.05	0.13	0.14	2.63
<i>Cosmocerca cf. podicipinus</i>	2	0.070	-0.019	0.03	0.07	0.24	2.12
<i>Cosmocercidae</i> gen. sp.	10	-0.789	0.439	0.35	44.10	0.37	125.26
<i>Raillietnema simples</i>	1	-	-	0.04	6.64	0.50	157.33
Kathlaniidae							
<i>Oxyascaris cf. caudacutus</i>	4	1.621	0.077	0.13	0.41	0.39	3.06
<i>Oxyascaris oxyascaris</i>	2	-	-	0.04	0.36	0.50	8.55
Rhabdiasidae							
<i>Rhabdias androgyna</i>	1	-	-	0.03	0.05	0.25	1.57
<i>Rhabdias elegans</i>	1	-	-	0.04	0.13	0.50	2.90
<i>Rhabdias fueleborni</i>	5	-0.548	2.348	0.15	0.38	0.32	2.48
<i>Rhabdias tobagoensis</i>	1	-	-	0.004	0.01	0.05	3
<i>Rhabdias</i> sp.1	1	-	-	0.05	0.19	0.60	3.41
<i>Rhabdias</i> sp.2	1	-	-	0.08	0.40	0.66	4.83
<i>Rhabdias</i> sp.3	1	-	-	0.01	0.03	0.20	2
<i>Rhabdias</i> sp.4	1	-	-	0.004	0.009	0.07	2
Physalopteridae							
Physalopteridae gen. sp.1	3	-0.338	-0.893	0.03	0.09	0.12	2.62
Physalopteridae gen. sp.2	3	1.324	-1.304	0.03	0.23	0.13	6.25
Molineidae							
<i>Oswaldocruzia mazzai</i>	1	-	-	0.09	1.78	0.90	19.05
<i>Oswaldocruzia</i> sp.1	3	0.874	-0.819	0.14	2.37	0.46	16.83
<i>Oswaldocruzia</i> sp.2	1	-	-	0.03	0.10	0.36	3.28
<i>Oswaldocruzia</i> sp.3	2	0.070	-0.019	0.01	0.03	0.12	1.75
Platyhelminthes							
Cestoda	3	0.939	0.094	0.05	0.35	0.18	6.90

generalist parasites tends to be higher in the host community but lower in the populations of infected hosts. The number of host species did not affect MII at the community scale but was also negatively related to the populations of infected hosts ($\beta = -0.21$, 95% CI = -0.40 to -0.02) (Fig. 1).

When considering only multi-host parasite species, the parasite infection parameters were not related to parasite phylogenetic specificity (host phylogenetic NRI) neither at community (all hosts) or population (infected hosts) scales (Fig. 2). However, parasite prevalence was positively related to ecological

specificity at both community and population scales (host ecological NRI, community: $\beta = 0.27$, 95% CI = 0.08 – 0.45 ; infected host populations: $\beta = 0.31$, 95% CI = -0.57 to -0.06). The prevalence of parasite taxa at the community scale was also positively related to the number of host species ($\beta = 0.26$, 95% CI = 0.07 – 0.44). Host specificity was less relevant for MII, since this infection parameter was negatively related only to the number of host species (Fig. 2), and this relationship was observed only at the scale of host community ($\beta = -0.32$, 95% CI = -0.66 to 0.03) (Table 2).

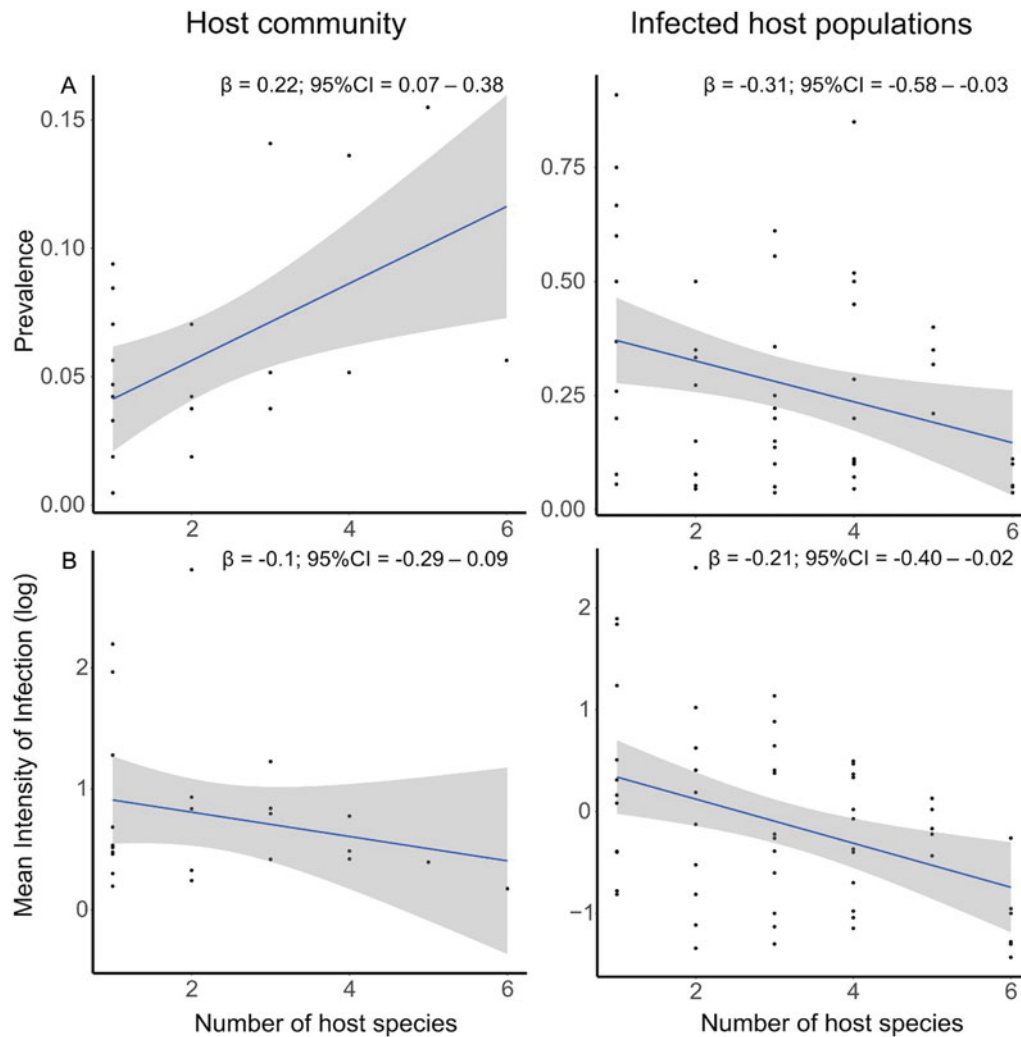


Fig. 1. Relationship between the number of host species and infection metrics for the community (left) and infected host populations (right): (A) infection prevalence; (B) mean intensity of infection (MII). The β estimate and its respective 95% confidence interval are shown in the upper-right of each scatter plot. The fitted linear curve (blue line) and the 95% confidence interval (grey area) are also presented.

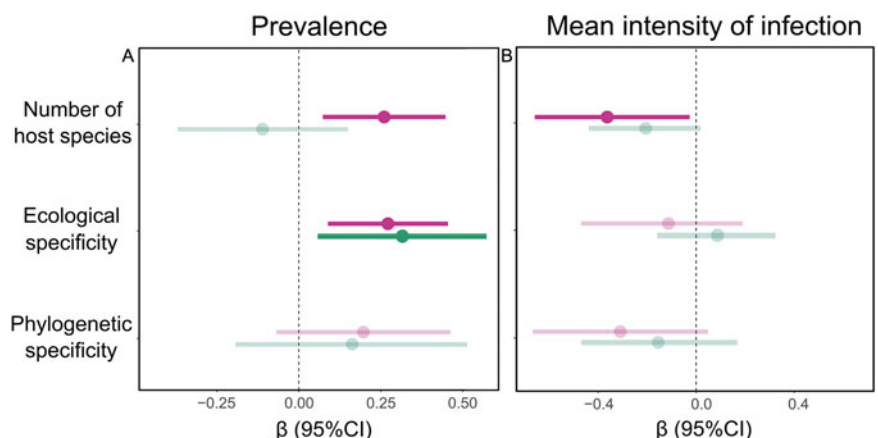


Fig. 2. The effect of parasite host specificity on (A) infection prevalence and (B) mean intensity of infection MII. The β estimate (circle) and 95% confidence interval (line) for both the community (pink) and infected host populations (dark green) are presented. Non-significant estimates are shown transparently.

Discussion

The use of multiple hosts by parasites, as well as their variable competence among the infected hosts, is directly related to the emergence of infectious diseases. The comprehension of every factor associated with parasite specificity and infection success is important to improve the predictive power and application of knowledge in disease ecology. In this study, we described how

the range of use of host species by parasites, host phylogeny and host functional attributes influenced parasite infection parameters. Parasite species that occur in ecologically close hosts are more prevalent, which shows that both the specificity and infection parameters of parasites are associated with the ecological characteristics of the hosts, such as habitat use, and it is related to the opportunities for parasites to exchange among hosts.

Table 2. Factors related to the prevalence of anuran parasites of the Atlantic Forest area. Analysis of variance (ANOVA) considering the correlation of parasite prevalence with the number of infected hosts, and the net phylogenetic and ecological relatedness indexes (NRI) at community (all hosts) and population (infected host species) scales.

Predictor variables	D.F.	χ^2	P
<i>Community prevalence</i>			
No. host	1	7.7458	0.0053
Phylogenetic host specificity (NRI)	1	1.9096	0.1670
Ecological host specificity (NRI)	1	8.2384	0.0041
<i>Community IMI</i>			
No. host	1	4.6026	0.0319
Phylogenetic host specificity (NRI)	1	2.8871	0.4777
Ecological host specificity (NRI)	1	0.5040	0.0892
<i>Population prevalence</i>			
No. host	1	0.7794	0.3773
Phylogenetic host specificity (NRI)	1	0.9384	0.3326
Ecological host specificity (NRI)	1	6.7780	0.0092
<i>Population IMI</i>			
No. host	1	2.6502	0.1035
Phylogenetic host specificity (NRI)	1	0.7563	0.5273
Ecological host specificity (NRI)	1	0.3996	0.3845

We found that the sampled parasite community is assembled by species that are not phylogenetic specialists, indicating host functional traits to be more relevant than host evolutionary history in this parasite community. Analysis of both functional and phylogenetic host specificity of multi-host parasite taxa allowed us to identify whether the parasite community analysed here may be tracking hosts that offer specific resources, which may or may not be phylogenetically conserved. The concepts of false specialist and false generalist parasites define a false specialist as a generalist limited to one or a few host species due to ecological, spatial or environmental factors (Brooks and McLennan, 2002). On the other hand, false generalists are specialists on a particular phylogenetically diffused resource (Brooks and McLennan, 2002; Agosta *et al.*, 2010; Nyman, 2010; Roy and Handley, 2012). The species we found on multiple hosts may be resource-specialist parasites (false generalists). Good examples of this pattern are the host functional specialist species *Aplectana macintoshii* and *Rhabdias fueleborni*, which were found only in hosts that share the same habitat (arboreal and terrestrial respectively). Thus, ecological opportunity, such as habitat use by phylogenetically distant hosts, may be mediating shifts between hosts (Brooks *et al.*, 2006; Agosta *et al.*, 2010).

Since hosts are resource patches for parasite colonization, the number of host species available in an environment can influence the probability of encountering parasites, which, in association with parasite specificity, can influence prevalence and MII (Hellgren *et al.*, 2009; Ellis *et al.*, 2020). When we analysed the entire sampled community, we found a positive correlation between the prevalence of parasite infection and the number of infected host species. This result corroborates the resource breadth hypothesis (Krasnov *et al.*, 2004), which states that species with greater niche breadths tend to have better local performance (high prevalence in the present study). According to this hypothesis, the same attributes of parasites that enable the association with different hosts will also allow the parasites to infect and exploit the hosts more efficiently, resulting in higher values of

infection parameters (Krasnov *et al.*, 2004; Pinheiro *et al.*, 2016; Garcia-Longoria *et al.*, 2019).

Interestingly, when we changed the scale and considered only the populations infected by each parasite taxa, we observed a negative relationship between prevalence and the number of host species. This result diverges from the resource breadth hypothesis and fits with the trade-off hypothesis. The trade-off hypothesis can also help to understand the patterns observed here, as it assumes a negative relationship between the range of hosts and parasite performance (Poulin, 1998; Krasnov *et al.*, 2004). According to the trade-off hypothesis, parasites that associate with multiple hosts would have higher energy costs to reach physiological compatibilities and overcome immune defences of different species, and this would reduce transmission (or reproduction) capacity and, consequently, prevalence (Robalinho Lima and Bensch, 2014).

The occurrence of single-host parasite taxa (such as most species of *Rhabdias*) is another relevant factor for the contrasting results in the relationship between prevalence and number of infected hosts at community (all hosts) and population (infected host species) scales. These lung-worm parasites had high prevalence values for the populations of infected hosts (≥ 0.5), despite the population size (assumed here as the sampling effort). Such single-host parasites had low prevalence at the community scale, since they occur in only one species and, consequently, in a low number of hosts when compared to the total number of anuran individuals in the community analysed here. Thus, our results emphasize the importance of exploring infection metrics at different scales and that presumably contrasting hypotheses (such as niche breadth and trade-off) are not necessarily mutually exclusive since one may have more influence than the other depending on the scale analysed (Pinheiro *et al.*, 2016).

Analyses with multi-host parasite taxa revealed that infection metrics at community and population scales did not correlate with host phylogeny, suggesting that a shared evolutionary history between hosts does not necessarily affect their chances of being infected by the same species of parasites (Brooks *et al.*, 2006; Agosta *et al.*, 2010). Parasite species can, potentially, use available resources, such as a different environment or host, without necessarily having to undergo changes in genotype, but because they use existing characteristics, i.e. *via* ecological fitting (Janzen, 1985; Brooks *et al.*, 2006; Agosta and Klemens, 2008; Araujo *et al.*, 2015). The prevalence of parasites in the community and populations of anurans analysed here was positively correlated with parasite ecological specificity, so that parasites associated with ecologically close hosts were more prevalent. Similar results were observed in other studies (see Johnson *et al.*, 2019 for a good example), inferring that host attributes, such as body size and habitat, are relevant to infection, regardless of host species identity (Kamiya *et al.*, 2014; D'Bastiani *et al.*, 2020; Euclides *et al.*, 2021). These results, together with those observed here, point to the importance of functional characteristics of hosts in the metrics of infection by parasites. Thus, ecological characteristics of hosts can promote host-parasite interactions and associations due to the exaptation capacity of parasites, and consequently influence the prevalence of these parasites (Agosta, 2006; Agosta *et al.*, 2010).

We conclude that parasite infection parameters are related to host specificity, and the use of different scales can provide complementary information about this relationship. The effects of the ecological specificity of parasites on their respective infection metrics, both at community and population scales, indicates the importance of host attributes in the assembly of the parasite community. The influence of host functional traits and the absence of a phylogenetic effect indicate the importance of ecological similarities among hosts as a driver for potential host shifts, which resulted from increased opportunity of contact for

the exchange of hosts by the parasites. Expanding studies related to the aspects of parasite specificity allows a better understanding of the characteristics of hosts and parasites that are related to higher infection among individuals within host populations and communities.

Supplementary material. The supplementary material for this article can be found at <https://doi.org/10.1017/S0031182022000087>

Acknowledgements. We thank Sanepar for the authorization and support for carrying out the collections. We are also grateful to Maurício O. Moura for his suggestions on the first version of this manuscript, and the Biological Interactions group for the constructive comments and discussions of the theoretical framework that were essential to maturing our hypotheses.

Author contributions. K.M.C., L.E. and G.M.D.T. originally formulated the idea. K.M.C., L.E., A.C.D., G.M.D.T. and F.T.V.M. performed data collection and generated the data analysis. K.M.C., L.E. and G.M.D.T. interpreted the results and wrote the manuscript.

Financial support. Conselho Nacional de Desenvolvimento Científico e Tecnológico (CNPq).

Conflict of interest. None.

Ethical standards. The collections and observations of this study were carried out in accordance with the license 62552-1 (Sistema de Autorização e Informação em Biodiversidade – Instituto Chico Mendes de Conservação da Biodiversidade – SISBIO). The Comitê de Ética para Uso de Animais da Seção de Ciências Biológicas da Universidade Federal do Paraná (Opinion no. 1167) certified that the procedures with the use of animals in this work are approved.

References

- Agosta SJ (2006) On ecological fitting, plant-insect associations, herbivore host shifts, and host plant selection. *Oikos* **114**, 556–565.
- Agosta SJ and Klemens JA (2008) Ecological fitting by phenotypically flexible genotypes: implications for species associations, community assembly and evolution: ecological fitting. *Ecology Letters* **11**, 1123–1134.
- Agosta SJ, Janz N and Brooks DR (2010) How specialists can be generalists: resolving the “parasite paradox” and implications for emerging infectious disease. *Zoologia (Curitiba)* **27**, 151–162.
- Amato JFR and Amato SB (2010) Técnicas gerais para coleta e preparação de helmintos endoparasitos de aves. In Matter SV, Straube FC, Accordi IA, Piacentini VQ and Candido JF Jr. (eds), *Ornitologia e Conservação: Ciência Aplicada, Técnicas de Pesquisa e Levantamento*. Rio de Janeiro, BR: Technical Books Editora, pp. 369–393.
- Amin OM (1985) Classification. In Crompton DWT and Nickol BB (eds), *Biology of Acanthocephala*. Cambridge, UK: Cambridge University Press, pp. 27–72.
- Anderson RC (2000) *Nematode Parasites of Vertebrates: Their Development and Transmission*, 2nd Edn. Wallingford, Oxon, UK; New York, NY: CABI Pub.
- Anderson RC, Chabaud AG, Willmott S and Commonwealth Institute of Helminthology (eds) (2009) *Keys to the Nematode Parasites of Vertebrates*. Archival volume. Wallingford: CABI.
- Araujo SBL, Braga MP, Brooks DR, Agosta SJ, Hoberg EP, von Hartenthal FW and Boeger WA (2015) Understanding host-switching by ecological fitting. *PLoS ONE* **10**, e0139225.
- Barrett LG, Thrall PH, Burdon JJ and Linde CC (2008) Life history determines genetic structure and evolutionary potential of host–parasite interactions. *Trends in Ecology & Evolution* **23**, 678–685.
- Blomberg SP, Garland T and Ives AR (2003) Testing for phylogenetic signal in comparative data: behavioral traits are more labile. *Evolution* **57**, 717.
- Bongers T and Ferris H (1999) Nematode community structure as a bioindicator in environmental monitoring. *Trends in Ecology & Evolution* **14**, 224–228.
- Brooks DR and McLennan DA (2002) *The Nature of Diversity: An Evolutionary Voyage of Discovery*. Chicago: University of Chicago Press.
- Brooks DR, León-Régagnon V, McLennan DA and Zelmer D (2006) Ecological fitting as a determinant of the community structure of platyhelminth parasites of anurans. *Ecology* **87**, S76–S85. doi: 10.1890/0012-9658(2006)87[76:EFAADO]2.0.CO;2.
- Bush AO, Lafferty KD, Lotz JM and Shostak AW (1997) Parasitology meets ecology on its own terms: Margolis et al. revisited. *The Journal of Parasitology* **83**, 575.
- Campião KM, Ribas AdA, Morais DH, da Silva RJ and Tavares LER (2015) How many parasites species a frog might have? Determinants of parasite diversity in South American anurans. *PLoS ONE* **10**, e0140577.
- Clark NJ and Clegg SM (2017) Integrating phylogenetic and ecological distances reveals new insights into parasite host specificity. *Molecular Ecology* **26**, 3074–3086.
- Cooper N, Griffin R, Franz M, Omotayo M and Nunn CL (2012) Phylogenetic host specificity and understanding parasite sharing in primates. *Ecology Letters* **15**, 1370–1377.
- Crump MLE and Scott NJ Jr. (1994) Visual encounter survey. In Heyer WR, Donnelly MA, McDiarmid RW, Donnelly Heyek LC and Foster MS (eds), *Measuring and Monitoring Biological Diversity, Standard Methods for Amphibians*. Washington, DC: Smithsonian Institution Press, pp. 84–91.
- D’Bastiani E and Campião KM (2021) Disentangling the beta-diversity in anuran parasite communities. *Parasitology* **148**, 327–332.
- D’Bastiani E, Campião KM, Boeger WA and Araújo SBL (2020) The role of ecological opportunity in shaping host–parasite networks. *Parasitology* **147**, 1452–1460.
- de Oliveira CR, Ávila RW and Morais DH (2019) Helminths associated with three *Physalaemus* species (Anura: Leptodactylidae) from Caatinga Biome, Brazil. *Acta Parasitologica* **64**, 205–212.
- Dobson A, Lafferty KD, Kuris AM, Hechinger RF and Jetz W (2008) Homage to Linnaeus: How many parasites? How many hosts? *Proceedings of the National Academy of Sciences* **105**, 11482–11489.
- Dray S and Dufour A-B (2007) The ade4 package: implementing the duality diagram for ecologists. *Journal of Statistical Software* **22**, 1–20. doi: 10.18637/jss.v022.i04
- Ellis VA, Huang X, Westerdahl H, Jönsson J, Hasselquist D, Neto JM, Nilsson J, Nilsson J, Hegemann A, Hellgren O and Bensch S (2020) Explaining prevalence, diversity and host specificity in a community of avian haemosporidian parasites. *Oikos* **129**, 1314–1329.
- Euclides L, Dudczak AC and Campião KM (2021) Anuran’s habitat use drives the functional diversity of nematode parasite communities. *Parasitology Research* **120**, 993–1001.
- Fecchio A, Wells K, Bell JA, Tkach VV, Lutz HL, Weckstein JD, Clegg SM and Clark NJ (2019) Climate variation influences host specificity in avian malaria parasites. *Ecology Letters* **22**, 547–557.
- Ferrari S and Cribari-Neto F (2004) Beta regression for modelling rates and proportions. *Journal of Applied Statistics* **31**, 799–815.
- Fountain-Jones NM, Pearse WD, Escobar LE, Alba-Casals A, Carver S, Davies TJ, Kraberger S, Papes M, Vandegrift K, Worsley-Tonks K and Craft ME (2017) Towards an eco-phylogenetic framework for infectious disease ecology. *Biological Reviews* **93**, 950–970. doi: 10.1111/brv.12380
- Frost D (2021) *Amphibian Species of the World: an Online Reference. Version 6.1*. Retrieved from American Museum of Natural History: New York, USA. <https://amphibiansoftheworld.amnh.org/index.php> (accessed 02 August 2021).
- García-Longoria L, Marzal A, de Lope F and Garamszegi L (2019) Host-parasite interaction explains variation in the prevalence of avian haemosporidians at the community level. *PLoS ONE* **14**, e0205624.
- Haas W (2003) Parasitic worms: strategies of host finding, recognition and invasion. *Zoology* **106**, 349–364.
- Haddad CFB, Toledo LF, Prado CPA, Loebmann D, Gasparini JL and Sazima I (2013) *Guia dos anfíbios da Mata Atlântica: Diversidade e Biologia*, 1st Edn. São Paulo, Brazil: Anolis.
- Hamann MI, Kehr AI and González CE (2013) Biodiversity of trematodes associated with amphibians from a variety of habitats in Corrientes Province, Argentina. *Journal of Helminthology* **87**, 286–300.
- Hechinger RF, Lafferty KD, Huspeni TC, Brooks AJ and Kuris AM (2007) Can parasites be indicators of free-living diversity? Relationships between species richness and the abundance of larval trematodes and of local benthos and fishes. *Oecologia* **151**, 82–92.
- Hellgren O, Pérez-Tris J and Bensch S (2009) A jack-of-all-trades and still a master of some: prevalence and host range in avian malaria and related blood parasites. *Ecology* **90**, 2840–2849.
- Janzen DH (1985) On ecological fitting. *Oikos* **45**, 308.
- Jetz W and Pyron RA (2018) The interplay of past diversification and evolutionary isolation with present imperilment across the amphibian tree of life. *Nature Ecology & Evolution* **2**, 850–858.

- Johnson PTJ, Preston DL, Hoverman JT and Richgels KL (2013) Biodiversity decreases disease through predictable changes in host community competence. *Nature* **494**, 230–233.
- Johnson PTJ, Calhoun DM, Riepe TB and Koprivnikar J (2019) Chance or choice? Understanding parasite selection and infection in multi-host communities. *International Journal for Parasitology* **49**, 407–415.
- Kamiya T, O'Dwyer K, Nakagawa S and Poulin R (2014) What determines species richness of parasitic organisms? A meta-analysis across animal, plant and fungal hosts: determinants of parasite species richness. *Biological Reviews* **89**, 123–134.
- Kemmel SW, Cowan PD, Helmus MR, Cornwell WK, Morlon H, Ackerly DD, Blomberg SP and Webb CO (2010) Picante: R tools for integrating phylogenies and ecology. *Bioinformatics (Oxford, England)* **26**, 1463–1464.
- Khalil LF, Jones A and Bray RA (1994) *Keys to the Cestode Parasites of Vertebrates*. Wallingford: CAB International.
- Koprivnikar J, Urichuk TMY and Szuroczki D (2017) Influences of habitat and arthropod density on parasitism in two co-occurring host taxa. *Canadian Journal of Zoology* **95**, 589–597.
- Krasnov BR, Poulin R, Shenbrot GI, Mouillot D and Khokhlova IS (2004) Ectoparasitic “Jacks-of-All-Trades”: relationship between abundance and host specificity in fleas (Siphonaptera) parasitic on small mammals. *The American Naturalist* **164**, 506–516.
- Leung TLF and Koprivnikar J (2019) Your infections are what you eat: how host ecology shapes the helminth parasite communities of lizards. *Journal of Animal Ecology* **88**, 416–426.
- Lutz HL, Hochachka WM, Engel JI, Bell JA, Tkach VV, Bates JM, Hackett SJ and Weckstein JD (2015) Parasite prevalence corresponds to host life history in a diverse assemblage of Afrotropical birds and Haemosporidian parasites. *PLoS ONE* **10**, e0121254.
- Miller ET, Farine DR and Trisos CH (2017) Phylogenetic community structure metrics and null models: a review with new methods and software. *Ecography* **40**, 461–477.
- Moen DS, Morlon H and Wiens JJ (2016) Testing convergence versus history: convergence dominates phenotypic evolution for over 150 million years in frogs. *Systematic Biology* **65**, 146–160.
- Nyman T (2010) To speciate, or not to speciate? Resource heterogeneity, the subjectivity of similarity, and the macroevolutionary consequences of niche-width shifts in plant-feeding insects. *Biological Reviews* **85**, 393–411.
- Pavoine S and Bonsall MB (2011) Measuring biodiversity to explain community assembly: a unified approach. *Biological Reviews* **86**, 792–812.
- Pavoine S, Vallet J, Dufour A-B, Gachet S and Daniel H (2009) On the challenge of treating various types of variables: application for improving the measurement of functional diversity. *Oikos* **118**, 391–402.
- Pavoine S, Baguette M, Stevens VM, Leibold MA, Turlure C and Bonsall MB (2014) Life history traits, but not phylogeny, drive compositional patterns in a butterfly metacommunity. *Ecology* **95**, 3304–3313.
- Pinheiro RBP, Félix GMF, Chaves AV, Lacorte GA, Santos FR, Braga ÉM and Mello MAR (2016) Trade-offs and resource breadth processes as drivers of performance and specificity in a host–parasite system: a new integrative hypothesis. *International Journal for Parasitology* **46**, 115–121.
- Poulin R (1996) Richness, nestedness, and randomness in parasite infracommunity structure. *Oecologia* **105**, 545–551.
- Poulin R (1998) Large-scale patterns of host use by parasites of freshwater fishes. *Ecology Letters* **1**, 118–128.
- Poulin R (2006) Variation in infection parameters among populations within parasite species: intrinsic properties versus local factors. *International Journal for Parasitology* **36**, 877–885.
- Poulin R (2007) Are there general laws in parasite ecology? *Parasitology* **134**, 763–776.
- Poulin R and Guegan J-F (2000) Nestedness, anti-nestedness, and the relationship between prevalence and intensity in ectoparasite assemblages of marine fish: a spatial model of species coexistence. *International Journal for Parasitology* **30**, 1147–1152. doi: 10.1016/s0020-7519(00)00102-8. PMID: 11027779.
- R Core Team (2020) *A language and environment for statistical computing*. Vienna, Austria: R Foundation for Statistical Computing.
- Poulin R and Morand S (2000) The diversity of parasites. *The Quarterly Review of Biology* **75**, 277–293.
- Reginato M and Goldenberg R (2007) Análise florística, estrutural e fitogeográfica da vegetação em região de transição entre as Florestas Ombrófilas Mista e Densa Montana, Piraquara, Paraná, Brasil. *Hoehnea* **34**, 349–360.
- Ribeiro MC, Metzger JP, Martensen AC, Ponzoni FJ and Hirota MM (2009) The Brazilian Atlantic Forest: How much is left, and how is the remaining forest distributed? Implications for conservation. *Biological Conservation* **142**, 1141–1153.
- Robalinho Lima M and Bensch S (2014) Why some parasites are widespread and abundant while others are local and rare? *Molecular Ecology* **23**, 3130–3132.
- Roy HE and Handley L-JL (2012) Networking: a community approach to invaders and their parasites. *Functional Ecology* **26**, 1238–1248. doi: 10.1111/j.1365-2435.2012.02032.x.
- Saldaña-Vázquez RA, Sandoval-Ruiz CA, Veloz-Maldonado OS, Durán AA and Ramírez-Martínez MM (2019) Host ecology moderates the specialization of Neotropical bat-fly interaction networks. *Parasitology Research* **118**, 2919–2924.
- Scheer MB and Blum CT (2011) Arboreal diversity of the Atlantic forest of Southern Brazil: from the beach ridges to the Paraná River. In Grillo O and Venora G (eds). *The Dynamical Processes of Biodiversity – Case Studies of Evolution and Spatial Distribution*. Rijeka, HR: InTech, pp. 109–134.
- Webb CO (2000) Exploring the phylogenetic structure of ecological communities: an example for rain forest trees. *The American Naturalist* **156**, 145–155.
- Webb CO, Ackerly DD and Kembel SW (2008) Phylocom: software for the analysis of phylogenetic community structure and trait evolution. *Bioinformatics (Oxford, England)* **24**, 2098–2100.
- Womack MC and Bell RC (2020) Two-hundred million years of anuran body-size evolution in relation to geography, ecology and life history. *Journal of Evolutionary Biology* **33**, 1417–1432.
- Zuur AF, Ieno EN, Walker N, Saveliev AA and Smith GM (2009) *Mixed Effects Models and Extensions in Ecology with R*. New York, NY: Springer.