

Confirmation of glyphosate-resistant Palmer amaranth (*Amaranthus palmeri*) populations in New York and responses to alternative chemistries

Research Article

Cite this article: Butler-Jones AL, Maloney EC, McClements M, Kramer WB, Morran S, Gaines TA, Besançon TE, Sosnoskie LM (2024) Confirmation of glyphosate-resistant Palmer amaranth (*Amaranthus palmeri*) populations in New York and responses to alternative chemistries. *Weed Sci.* **72**: 508–516. doi: [10.1017/wsc.2024.48](https://doi.org/10.1017/wsc.2024.48)

Received: 15 March 2024

Revised: 19 May 2024

Accepted: 6 June 2024

First published online: 28 October 2024

Associate Editor:






Dean E. Riechers, University of Illinois

Keywords:

ALS inhibitor; EPSPS copy number; glyphosate; herbicide resistance; HPPD inhibitor; PSII inhibitor

Corresponding author:

Lynn M. Sosnoskie; Email: lms438@cornell.edu

Aleah L. Butler-Jones¹ , Elizabeth C. Maloney², Melissa McClements², William B. Kramer³ , Sarah Morran⁴, Todd A. Gaines⁵ , Thierry E. Besançon⁶  and Lynn M. Sosnoskie⁷ 

¹Graduate Research Assistant, Field of Horticulture, School of Integrative Plant Science, Cornell University, Geneva, NY, USA; ²Research Technician, Section of Horticulture, School of Integrative Plant Science, Cornell University, Geneva, NY, USA; ³Graduate Research Assistant, Department of Agricultural Biology, Colorado State University, Fort Collins, CO, USA; ⁴Weeds Manager, Grains Research and Development Corporation, Barton, ACT, Australia; ⁵Associate Professor, Department of Agricultural Biology, Colorado State University, Fort Collins, CO, USA; ⁶Associate Professor and Extension Weed Science Specialist, Department of Plant Biology, Rutgers University, Chatsworth, NJ, USA and ⁷Assistant Professor, Section of Horticulture, School of Integrative Plant Science, Cornell University, Geneva, NY, USA

Abstract

Palmer amaranth (*Amaranthus palmeri* S. Watson, AMAPA) is one of the most troublesome weeds in North America due to its rapid growth rate, substantial seed production, competitiveness and the evolution of herbicide-resistant populations. Though frequently encountered in the South, Midwest, and Mid-Atlantic regions of the United States, *A. palmeri* was recently identified in soybean [*Glycine max* (L.) Merr.] fields in Genesee, Orange, and Steuben counties, NY, where glyphosate was the primary herbicide for in-crop weed control. This research, conducted in 2023, aimed to (1) describe the dose response of three putative resistant NY *A. palmeri* populations to glyphosate, (2) determine their mechanisms of resistance, and (3) assess their sensitivity to other postemergence herbicides commonly used in NY crop production systems. Based on the effective dose necessary to reduce aboveground biomass by 50% (ED₅₀), the NY populations were 42 to 67 times more resistant to glyphosate compared with a glyphosate-susceptible population. Additionally, the NY populations had elevated EPSPS gene copy numbers ranging from 25 to 135 located within extrachromosomal circular DNA (eccDNA). Label rate applications of Weed Science Society of America (WSSA) Group 2 herbicides killed up to 42% of the NY populations of *A. palmeri*. Some variability was observed among populations in response to WSSA Group 5 and 27 herbicides. All populations were effectively controlled by labeled rates of herbicides belonging to WSSA Groups 4, 10, 14, and 22. Additional research is warranted to confirm whether NY populations have evolved multiple resistance to herbicides within other WSSA groups and to develop effective *A. palmeri* management strategies suitable for NY crop production.

Introduction

Across U.S. agricultural production, herbicides are indispensable tools for weed control due to their high efficacy and relatively low cost compared with other control options (Varanasi et al. 2016). However, herbicide resistance and the proliferation of herbicide-resistant (HR) weeds pose a major threat to various cropping systems across the world (Norsworthy et al. 2012; Westwood et al. 2018). The number of unique cases of HR weeds in the United States has more than quadrupled in the last 30 yr (Heap 2024). Furthermore, very few new herbicide sites of action (SOAs) have been released over the same period (Dayan and Duke 2020; Duke 2012; Shaner and Beckie 2014). While many weed species have evolved resistance to a single active ingredient or herbicide SOA, populations exhibiting resistance to multiple SOAs have been identified.

One such species is Palmer amaranth (*Amaranthus palmeri* S. Watson, AMAPA), a C₄ summer annual native to the southwestern United States and northern Mexico. It is consistently ranked as one of the most troublesome and economically significant weeds for U.S. corn (*Zea mays* L.) and soybean [*Glycine max* (L.) Merr.] production (Ehleringer 1983; Van Wychen 2022; Ward et al. 2013). This dioecious species poses a serious threat to cropping systems because of its rapid growth rate (Ward et al. 2013), prolific seed production (Keeley et al. 1987), potential for long-distance pollen dispersal (Sosnoskie et al. 2012), and morphological and phenological

© The Author(s), 2024. Published by Cambridge University Press on behalf of Weed Science Society of America. This is an Open Access article, distributed under the terms of the Creative Commons Attribution licence (<http://creativecommons.org/licenses/by/4.0/>), which permits unrestricted re-use, distribution and reproduction, provided the original article is properly cited.



plasticity in response to environmental conditions (Ehleringer 1983; Keeley et al. 1987; Spaunhorst et al. 2018). *Amaranthus palmeri* seed dispersal results from both natural and anthropogenic factors, including the movement of agricultural equipment required by mowing, tillage, and harvesting operations (Norsworthy et al. 2008); wildlife (Farmer et al. 2017); water movement (Norsworthy et al. 2014); and application of manure contaminated by ingested seeds (Yu et al. 2021). *A. palmeri*'s ability to dominate many agricultural landscapes following dispersal has been facilitated by the evolution of herbicide resistance, including glyphosate resistance.

Between 1987 and 2007, U.S. glyphosate usage increased from less than 5,000 Mg yr⁻¹ to more than 80,000 Mg yr⁻¹ due to the widespread adoption of glyphosate-resistant (GR) agronomic crops and the expansion of reduced- and no-tillage agriculture, which often relies heavily on herbicides for weed control (Battaglin et al. 2014; Benbrook 2016). GR populations of *A. palmeri* were first identified in Georgia (GA) in 2006 (Culpepper et al. 2006) and are now found in more than 28 U.S. states as well as in Argentina, Brazil, Mexico, South Africa, and Uruguay (Heap 2024; Küpper et al. 2018; Molin et al. 2020a). In the northeastern United States, GR populations have been reported in Connecticut (Heap 2024), Pennsylvania (DD Lingenfelter, personal communication), and New Jersey (TEB, personal observations). In the United States, *A. palmeri*'s mechanism of resistance to glyphosate relies on the amplification of the EPSPS coding gene contained within extrachromosomal circular DNA (eccDNA), thus increasing enzyme copy numbers (Gaines et al. 2010; Molin et al. 2018, 2020b). The conservation of the EPSPS replicon across GR *A. palmeri* populations suggests that widespread resistance originated from a single population (Molin et al. 2018, 2020a). *Amaranthus palmeri* is not solely resistant to glyphosate (Heap 2024). At this time, there have been 70 unique reports in the United States of *A. palmeri* resistance to many SOAs, alone or in combination, including acetolactate synthase (ALS)-, microtubule-, photosystem II (PSII)-, 5-enol-pyruvylshikimate-3-phosphate synthase (EPSPS)-, glutamine synthetase-, protoporphyrinogen oxidase- (PPO), very long-chain fatty acid synthesis (VLCFA)-, hydroxyphenylpyruvate dioxygenase (HPPD)-inhibiting and auxin-mimicking herbicides corresponding to WSSA Groups 2, 3, 5/6, 9, 10, 14, 15, 27, and 4, respectively (Heap 2024). For example, a population resistant to chlorsulfuron (WSSA Group 2), 2,4-D (WSSA Group 4), atrazine (WSSA Group 5), glyphosate (WSSA Group 9), and mesotrione (WSSA Group 27) was identified in Kansas (KS) (Kumar et al. 2019).

Given its competitiveness, confirmed resistance to numerous herbicide SOAs, and expected range expansion due to climate change (Eceiza et al. 2022), *A. palmeri* poses a major threat to cropping systems in the northeastern United States. *Amaranthus palmeri*'s presence in New York (NY) was first confirmed in 2019 in a soybean field in Steuben County. Additionally, sizable populations were reported in 2021 and 2022, also in soybeans, in Orange and Genesee counties, respectively (LMS, personal observations). In 2021, NY soybean production covered more than 131,000 ha and was valued at more than US\$205 million. In the northeastern United States, diversified cropping systems are commonplace, often including both agronomic and specialty crops. Soybeans are commonly included in the crop rotation of vegetable production systems. Vegetables are important commodities in NY, which is a top 10 state for the production of specialty crops. NY has been ranked second in the United States for both cabbage (*Brassica oleracea* L.) and snap beans (*Phaseolus vulgaris* L.) and is one of the top 10 producing states for onions (*Allium cepa* L.), pumpkins (*Cucurbita pepo* L.), squash (*Cucurbita*

maxima Duchesne), and sweet corn (*Zea mays* L.) (USDA-NASS 2024). *Amaranthus palmeri* is also becoming increasingly troublesome in several vegetable crops such as sweet potato [*Ipomea batatas* (L.) Lam.], pumpkin, and asparagus (*Asparagus officinalis* L.) (Boyd et al. 2022). Given that the same field preparation equipment can be used in both agronomic and specialty crop production, it is important to evaluate the efficacy of different herbicide options for managing *A. palmeri* once it has spread into vegetable systems. Controlling *A. palmeri* in vegetables may pose greater challenges due to the restricted availability of herbicides approved for use in these crops, hindering the necessary rotation of herbicides SOAs and increasing the risk of selecting for HR biotypes.

The purpose of this study was to (1) confirm the presence of GR *A. palmeri* populations in NY through dose-response studies, (2) determine the mechanism of resistance to glyphosate of these populations, and (3) assess their sensitivity to alternative herbicide SOAs commonly used in corn, soybean, and vegetable production. We hypothesize that the suspected GR accessions are resistant through the amplification of eccDNA containing the gene coding for EPSPS, thus significantly increasing enzyme copy numbers. Further, we hypothesize that the NY populations will exhibit reduced sensitivity to field use rates of at least one herbicide from WSSA Groups 2, 5, and 27.

Materials and Methods

Plant Material and Research Sites

Between 2019 and 2022, seeds were collected from three suspected GR *A. palmeri* populations present in soybean fields in Steuben, Orange, and Genesee counties, NY (Figure 1). Samples were harvested from 20 female plants that survived glyphosate applications made during the growing season. Field edges were avoided during sampling. Seed heads were threshed to separate the seeds, which were subsequently cleaned and stored at 4 C until the start of the experiments. The Steuben County population (NY-STE) was discovered and collected from a farm near Howard, NY (42.36°N, 77.51°W). Most fields within this operation were in a corn-soybean-alfalfa (*Medicago sativa* L.) rotation. The Orange County population (NY-ORA) was collected from a soybean and diversified vegetable farm near Florida, NY (41.33°N, 74.37°W). The Genesee County population (NY-GEN) was collected from a farm with an agronomic crop rotation located near Pavilion, NY (42.88°N, 78.02°W). In addition to these NY populations, a Nebraska (NE) glyphosate-susceptible (GS) *A. palmeri* population, collected from Keith County in 2017, was used in the experiments and is hereafter referred to as NE-S. Seeds from this population were provided Rodrigo Werle at University of Wisconsin-Madison, WI.

Glyphosate Dose Response

Greenhouse trials were conducted at Cornell AgriTech in Geneva, NY, between February and April 2023. The study was established as a completely randomized design (CRD) with 10 replications per treatment and was repeated once. Five to 10 *A. palmeri* seeds were planted in 7.6-cm-diameter pots filled with Lambert LM-111 growing media (Lambert, Rivière-Ouelle, Québec, Canada) and hand-thinned to one plant per pot after emergence. Growing media moisture was maintained for the duration of the experiment through daily irrigation. Greenhouses were set to a constant temperature of 25 C with a 16-h day length. Natural lighting was supplemented with 400-W high-pressure sodium lamps.

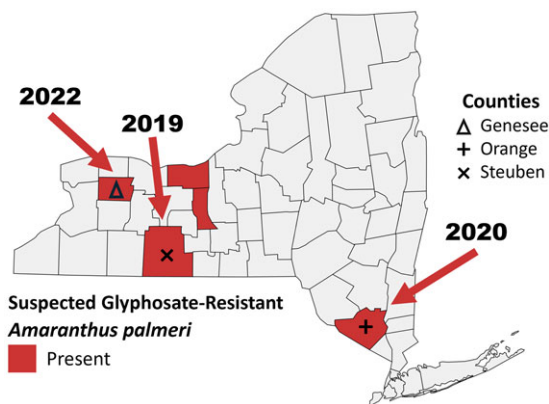


Figure 1. Map of New York showing Genesee (Δ), Orange (+), Seneca (no marker), Steuben (\times), and Wayne (no marker) counties in which populations of *Amaranthus palmeri* have been found. Insufficient seed was obtained from populations in Wayne and Seneca counties to include them in this study.

All seedlings were grown to the 2- to 4-leaf stage, at which time glyphosate (Roundup PowerMax[®], 540 g ae L⁻¹, Bayer Crop Science, St Louis, MO) was applied at 27, 54, 109, 218, 435, 870 (1X label application rate), 1,740, 3,480, and 6,960 g ae ha⁻¹. A nontreated control (NTC) was also included for comparison. Applications were made using a single-nozzle cabinet sprayer (DeVries Manufacturing, Hollandale, MN) equipped with a TeeJet[®] 8002VS nozzle (TeeJet Technologies, Glendale Heights, IL). The cabinet sprayer was calibrated to deliver a volume of 187 L ha⁻¹ at 276 kPa. At 21 d after treatment (DAT), plant survival was evaluated visually as dead (no green tissue = 0) or alive (green tissue and evidence of regrowth = 1). Aboveground biomass was also collected and recorded at 21 DAT and dried at 60 C for 7 d, and then the dry weights were recorded. Biomass data were converted to percent biomass relative to the NTC using Equation 1:

$$\text{Percent biomass} = \frac{DB_{\text{EU}}}{DB_{\text{NTC}}} \times 100 \quad [1]$$

with DB_{EU} representing the dry biomass of the experimental unit, and DB_{NTC} corresponding to the mean dry biomass of the NTC for each population.

EPSPS Gene Copy Number Assay

Six replicate plants from the three NY and the NE-S population were grown to the 6- to 8-leaf stage under the conditions described earlier. One fully expanded leaf was harvested from the newest growth of each plant and stored at -80 C until further processing. To extract genomic DNA, the sample leaf was inserted into 1.5-ml microcentrifuge tubes containing metal beads and placed in a TissueLyser II (Qiagen Sciences, Germantown, MD) for one minute at 1,200 rpm. Genomic DNA was extracted using a modified cetyltrimethylammonium bromide protocol as described by Xin and Chen (2012). Following DNA extraction, the concentration of nucleic acid was quantified using a NanoDrop[™] 2000 (Thermo Fisher Scientific, Waltham, MA). DNA concentrations were standardized to 1 ng μl^{-1} using sterile high-performance liquid chromatography (HPLC)-grade water and used for quantitative polymerase chain reaction (qPCR) as described below.

Quantitative real-time PCR was used to measure gene copy number of *EPSPS* relative to the *ALS* copy number of the NE-S

population. Extracted DNA from the NY and NE-S populations were used for this assay. DNA from confirmed GR and GS populations originating from Pima County, AZ, were included as positive (AZ-R) and negative (AZ-S) controls (Molin et al. 2018); however, only three replicates were used due to the limited number of samples available. Primers EPSF1 (5'-ATGTTGGACGCTCTCAGAACTCTTGGT-3') \times EPSR8 (5'-TGAATTCCTCCAGCAACGGCAA-3') and ALSF2 (5'-GCTGCTGAAGGCTACGCT-3') \times ALSR2 (5'-GCG GGACT GAGTCAAGAAGTG-3') were used as the EPSPS and ALS primers, respectively (Gaines et al. 2010; Tranel et al. 2004). ALS primers were included due to low variability in *ALS* gene sequences in *Amaranthus* spp., as demonstrated by Tranel et al. (2004).

Quantitative PCR was performed following the procedures described by Gaines et al. (2010). Each individual sample was run in duplicate. Each 20 μl reaction was composed of 2 μl of DNA template containing 10 ng of sample DNA, 1 μl of forward primers, 1 μl of reverse primers, 10 μl of SYBR[®] Green Master Mix (Bio-Rad Laboratories, Hercules, CA), and 6 μl of sterile HPLC-grade water. The 20- μl reactions were amplified by the following thermoprofile on a MyiQ real-time PCR detection system (Bio-Rad Laboratories): 95 C for 15 min, then 30 cycles of 95 C for 30 s and 60 C for 1 min. Real-time fluorescence data were captured during the amplification cycles. Negative controls containing primers without sample DNA or lacking both primers and sample DNA were included. No amplification products were observed in the negative controls.

Relative quantification of *EPSPS* copy number following the method developed by Gaines et al. (2010) was used to assess data from the qPCR experiment. Relative quantification of *EPSPS* copy number (ΔC_t) was calculated using Equation 2:

$$\Delta C_t = C_t^{\text{ALS}} - C_t^{\text{EPSPS}} \quad [2]$$

with C_t^{ALS} and C_t^{EPSPS} representing the number of cycles required for the fluorescence signal to exceed that of the background level (threshold cycle) for samples amplified using the ALS and EPSPS primers, respectively. Change in *EPSPS* copy number was reported as $2^{\Delta C_t}$ which is the multiplicative increase in *EPSPS* copy number relative to *ALS* copy number, the latter of which has proven monogenic inheritance in *Amaranthus* spp. (Trucco et al. 2005). Resistance to ALS-inhibiting herbicides does not result from *ALS* gene amplification; rather, it is caused by target-site mutations at amino acid sites, thus interfering with the binding of ALS inhibitors (Gaines et al. 2020).

EPSPS Cassette Marker Assay

Amaranthus palmeri DNA isolated for the *EPSPS* gene copy number assay was also used to confirm the presence of eccDNA in the suspected GR *A. palmeri* populations through PCR. Each reaction contained 10 ng of DNA template, EconoTaq DNA Polymerase (Lucigen Corporation, Middleton, WI), forward and reverse primers, and sterile HPLC-grade water, thus producing a 20- μl reaction. Two sets of primer pairs were used in this experiment. Primer pairs AW293 (5'-GTTATAGCAGCAATT CACCAG-3') \times AW275 (5'-CTAGTTGTTTCACCTTGTGGTGTG-3') and AW216 (5'-GACCTGGGTTGTCTTCATTC-3') \times AW541 (5'-CGATGATCCAACCGTCCA-3'), henceforth referred to as eccDNA markers A (1,757 bp) and C (1,554 bp), respectively, were used to amplify regions of the eccDNA genome containing the amplified *EPSPS* gene (Molin et al. 2018). Reactions containing DNA from GR and GS populations as described for the

EPSPS gene copy number assay were used as positive and negative controls, respectively. In addition, separate negative control reactions containing replicon-specific markers but no sample DNA were included in each amplification run. The PCR thermocycler settings were as follows: 4 min of denaturing at 94 C, followed by thirty 30-s cycles at 94 C, 30 s of annealing at 55 C, a 90-s extension period at 72 C, and a final 5-min extension period at 72 C. The presence or absence of the two *eccDNA* markers was detected using 1% agarose gel electrophoresis. No amplification products were observed in the negative controls.

Response to Alternative Chemistries

In addition to the glyphosate dose–response study, the sensitivity of the NE-S and NY populations to alternative chemistries was also evaluated. Treatments consisted of registered postemergence herbicides commonly used in field corn, soybean, and vegetable production (Table 1) applied within the rate range recommended by the label. Plants were grown under the same greenhouse conditions as previously described for the glyphosate dose–response study. The experiment was conducted as a CRD. Based on emergence success, 6 to 10 replicate plants for each population by herbicide combination were used to evaluate responses to alternate chemistries. The study was conducted twice. Herbicides were applied when plants reached the 2- to 4-leaf stage. The same cabinet sprayer and application settings as those described for the dose–response study were used. At 21 DAT, plant survival was rated as dead (no green tissue = 0) or alive (green tissue and evidence of regrowth = 1). This was used to calculate percent mortality for each combination of herbicide and population. Aboveground biomass was subsequently collected, dried at 60 C for 7 d, and weighed. Relative biomass was calculated using Equation 1.

Statistical Analysis

All statistical analyses were performed using RStudio v. 2023.06.1 (R Core Team 2023). ANOVA confirmed that there were no significant differences between the experimental runs, and data were pooled across runs. The assumption of normality was not violated; thus, no transformation of the data was required. Three- and four-parameter log-logistic functions were created using the DRC package v. 3.0-1 (Ritz et al. 2015). Lack-of-fit tests were run on each model using the *modelFit* function within the DRC package (Ritz et al. 2015). We failed to reject the null hypothesis and concluded that the models fit the data well. ANOVA was performed to assess whether the three- and four-parameter log-logistic models differed significantly. ANOVA confirmed no significant differences in fit between the models; thus the simpler model was chosen. The three-parameter model was used to ascertain the dose of glyphosate required to reduce the biomass of each *A. palmeri* population relative to the NTC by 50% (ED_{50}) using Equation 3 (Knezevic et al. 2007):

$$Y = \frac{d}{1 + \exp[b(\log x - \log e)]} \quad [3]$$

where Y is the aboveground dry biomass expressed as a percentage of the mean biomass of the NTC and x is the herbicide application rate. Parameter d is the upper limit of the log-logistic curve. The ED_{50} is represented by e , while b is the relative slope around parameter e . Using the *ED* function within

the DRC package, the dose of glyphosate required to reduce the biomass of each population relative to the NTC by 90% (ED_{90}) was also calculated. The resistance level, expressed as the R/S ratio, was calculated by dividing the ED_{50} of each suspected GR population by the ED_{50} of the susceptible population. Statistical analysis was not conducted on the mortality data, as the data were reported as percent dead for each herbicide treatment.

For the *EPSPS* gene copy number assay and the alternative chemistries experiment, a linear mixed models were fit to determine the effect of population on relative *EPSPS* gene copy number and the effects of herbicide and population on biomass accumulation using the LME4 package v. 1.1-32 (Bates et al. 2015). To account for the imbalance in the number of replicates, the Satterthwaite approximation for degrees of freedom was used (Kuznetsova et al. 2017). Herbicides, populations, and their interaction were treated as fixed effects, while experimental runs were considered a random effect. ANOVA was performed followed by Tukey's honestly significant difference pairwise comparisons ($\alpha = 0.05$) using the EMMEANS package v. 1.8.8 (Lenth 2023). The normality and homoskedasticity assumptions were not violated, thus no transformations of the data were required.

Results and Discussion

Dose–Response Experiment

NY populations were not effectively controlled by glyphosate compared with the NE-S population, which had 100% mortality at the 870 g ae ha⁻¹ rate (data not shown). Conversely, at the same glyphosate dose, percent mortality observed for the NY-GEN, NY-ORA, and NY-STE populations was 15%, 25%, and 10%, respectively. None of the NY populations were completely controlled by the highest dose (6,960 g ae ha⁻¹) of glyphosate, although 85% to 95% mortality was observed.

The dose of glyphosate required to reduce the aboveground dry biomass of the NY populations by 50% ranged from 565 to 902 g ae ha⁻¹ (Figure 2; Table 2). The ED_{50} value for NY-ORA (565 g ae ha⁻¹) differed significantly from that of NY-STE (902 g ae ha⁻¹), but not NY-GEN (849 g ae ha⁻¹). The ED_{50} values of the NY populations were within the lower part of the range of reported ED_{50} values for *GR A. palmeri* in the United States. Based on our estimated ED_{50} values, the computed R/S ratios of the NY-GEN, NY-ORA, and NY-STE populations were 68, 42, and 64, respectively (Table 2). These values were within the range of the reported ED_{50} -based R/S ratios for GR populations in the United States. Similar ED_{50} values were reported from GA and New Mexico (NM) at glyphosate rates of 560 and 458 g ae ha⁻¹, respectively (Culpepper et al. 2006; Mohseni-Moghadam et al. 2013). Conversely, glyphosate applied at 1,320 g ae ha⁻¹ caused a 50% biomass reduction in an NE GR population (Chahal et al. 2017). With respect to R/S values, Chahal et al. (2017) observed that GR populations from NE were 37 to 40 times more resistant to glyphosate than the susceptible population. On the upper end of the range of R/S values, Norsworthy et al. (2008) reported that an Arkansas (AR) GR population's resistance levels were 79 to 115 times greater than that of the susceptible population. On the lower end of the range, Culpepper et al. (2006) found that a GR population from GA was six times more resistant than the GS population. Similarly, Kumar et al. (2018) reported that a multiple HR population from KS had R/S ratios ranging from 7 to 14. Glyphosate rates required to reduce the biomass of NY populations by 90% ranged from 2,196 to 5,311 g ae ha⁻¹

Table 1. Postemergence herbicides used to assess the response of *Amaranthus palmeri* populations to herbicide sites of action commonly used in New York agriculture

Active ingredient ^a	WSSA Group ^b	Herbicide family	Product formulation	Herbicide manufacturer	Application rate ^c
Chlorimuron-ethyl	2	Sulfonylureas	Classic®	AMVAC, Newport Beach, CA	13.1
Cloransulam-methyl	2	Triazolopyrimidine	FirstRate®	AMVAC, Newport Beach, CA	35.3
Halosulfuron-methyl*	2	Sulfonylureas	Sandea®	Gowan, Yuma, AZ	58.5
Rimsulfuron*	2	Sulfonylureas	Matrix® SG	Corteva, Indianapolis, IN	70.1
2,4-D	4	Phenoxy-carboxylates	Embed® Extra	Corteva, Indianapolis, IN	733*
Dicamba	4	Benzoic acid	XtendiMax®	Bayer Crop Science, St Louis, MO	559*
Atrazine	5	Triazine	Aatrex® 4L	Syngenta Crop Protection, Greensboro, NC	1,244
Prometryn*	5	Triazine	Caparol® 4L	Syngenta Crop Protection, Greensboro, NC	1,122
Linuron	5	Substituted ureas	Lorox® DF	Tessenderlo Kerley, Phoenix, AZ	841
Glufosinate-ammonium	10	Phosphinic acids	Rely® 280	Bayer Crop Science, St Louis, MO	595
Flumioxazin	14	<i>N</i> -phenyl-imides	Chateau® SW	Valent, Walnut Creek CA	70.1
Fomesafen*	14	Diphenyl ethers	Reflex®	Syngenta Crop Protection, Greensboro, NC	421
Oxyfluorfen	14	Diphenyl ethers	Goatender®	NuFarm, Alsip, IL	210
Paraquat*	22	Bipyridilium	Gramoxone® SL 3.0	Syngenta Crop Protection, Greensboro, NC	754
Mesotrione*	27	Triketone	Callisto®	Syngenta Crop Protection, Greensboro, NC	105
Topramezone†	27	Pyrazoles	Impact®	AMVAC, Newport Beach, CA	24.5

^aActive ingredients displayed with an asterisk (*) and a dagger (†) included nonionic surfactant at 0.25% (v/v) and methylated seed oil at 1% (v/v) in the spray mix, respectively.

^bWSSA, Weed Science Society of America.

^cRates displayed with an asterisk (*) are acid equivalent (ae) while those without an asterisk are active ingredient (ai).

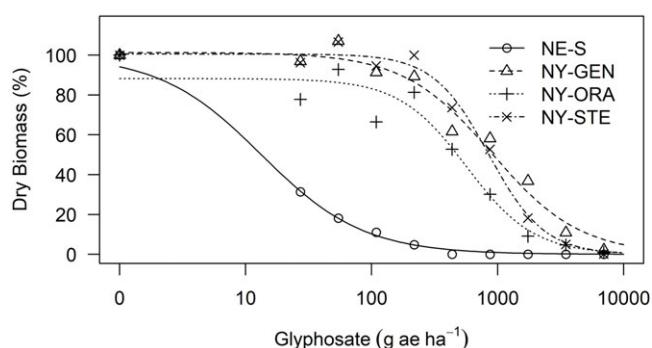


Figure 2. Dose–response curves of glyphosate-resistant (GR) populations of *Amaranthus palmeri* from Genesee (NY-GEN), Orange (NY-ORA), and Steuben (NY-STE) counties in New York and a glyphosate-susceptible (GS) population from Nebraska (NE-S) showing relative biomass at 21 d after treatment. Relative biomass was calculated with the following equation: Relative biomass = $\frac{DB_{EU}}{DB_{NTC}} \times 100$ with DB_{EU} representing the dry biomass of the experimental unit and DB_{NTC} representing the mean biomass of 10 nontreated control replicates for the appropriate population.

(Table 2). Given *A. palmeri*'s abundant seed production, high levels of control are required to reduce its in-field persistence and subsequent spread to new areas. Results show that effective control of NY populations with glyphosate will not be achievable at labeled use rates.

EPSPS Gene Copy Number and Confirmation of EPSPS Cassette Presence

The NY populations had higher *EPSPS* copy numbers than the known susceptible populations from NE and AZ. The relative *EPSPS* gene copy numbers of NY-GEN, NY-ORA, and NY-STE averaged 55, 47, and 91, respectively (Figure 3). These results strongly suggest that amplification of the *EPSPS* gene confers glyphosate resistance in the NY populations as described by Gaines et al. (2010) for GR *A. palmeri* plants collected from GA. Chahal et al. (2017) found that *A. palmeri* plants with at least 30 copies of the *EPSPS* gene survived exposure to glyphosate applied at 870 g ae ha⁻¹. Molin et al. (2018) reported that the *EPSPS* gene

copy numbers of GR *A. palmeri* populations from AZ, Delaware (DE), GA, KS, Maryland (MD), and Mississippi (MS), respectively, ranged from 6 to 61 copies. Other members of Amaranthaceae have evolved resistance to glyphosate through the same mechanism. For example, Gaines et al. (2016) confirmed that increased *EPSPS* gene copy number was the resistance mechanism of several GR kochia [*Bassia scoparia* (L.) A.J. Scott] populations collected from sugar beet (*Beta vulgaris* L.) and wheat (*Triticum aestivum* L.)–chemical fallow fields across the Great Plains region of the United States.

Significantly higher gene-copy number was observed in the NY-STE plants than in the NY-ORA plants. Although the relationship between gene copy number and level of resistance was not explicitly tested in this experiment, our results appear to indicate that higher gene copy numbers of NY-STE may be responsible for the higher level of resistance ($R/S = 64$) observed in this population as compared with NY-ORA ($R/S = 42$). Vila-Aiub et al. (2014) found that plants with higher amplification of the *EPSPS* gene displayed higher levels of resistance compared with those with lower amplification of the *EPSPS* gene.

All three NY populations contain the *EPSPS* replicon; eccDNA markers A and C were amplified in the AZ-R and all NY populations (Figure 4). The bands were similar in size, pattern, and position relative to the DNA ladder. The AZ-S and NE-S populations failed to amplify and produce PCR products, implying the absence of eccDNA. Results from this study support previous findings by Molin et al. (2020b), who reported that the mechanism of resistance is the amplification of the *EPSPS* replicon, or the approximately 400-kb eccDNA containing the *EPSPS* gene and 58 other genes that encode other competitive functions. Further, this mechanism is unique to GR *A. palmeri* plants (Molin et al. 2020a, 2020b). Koo et al. (2018) demonstrated that eccDNA is transmitted both mitotically and meiotically during cell division, leading to the rapid evolution of glyphosate resistance. The *EPSPS* replicon is reported to be highly conserved across GR *A. palmeri* populations from AZ, DE, GA, KS, MD, and MS, strongly suggesting that resistance to glyphosate in the United States originated from a single population despite its widespread prevalence (Molin et al. 2018, 2020a).

Table 2. Estimation of regression parameters and glyphosate dose required for 50% (ED₅₀) and 90% (ED₉₀) reduction in biomass of *Amaranthus palmeri* populations at 21 d after treatment

<i>A. palmeri</i> population ^a	Regression parameters (±SE) ^b		Glyphosate ^c		R/S ^d
			ED ₅₀ (±SE)	ED ₉₀ (±SE)	
	<i>b</i>	<i>d</i>	g ae ha ⁻¹		
NE-S	1.07 (±0.33)	99.98 (±5.74)	13.33 (±5.36)	103.24 (±35.62)	—
NY-GEN	1.24 (±0.16)	101.31 (±3.60)	901.99 (±124.13)	5,311.44 (±1,165.05)	67.67
NY-ORA	1.62 (±0.34)	88.20 (±3.78)	565.34 (±76.01)	2,195.91 (±577.81)	42.42
NY-STE	1.97 (±0.30)	100.53 (±2.94)	848.84 (±81.61)	2,579.42 (±447.60)	63.68

^aNE-S, glyphosate-susceptible (GS) population from Keith County, NE; NY-GEN, NY-ORA, and NY-STE, glyphosate-resistant (GR) populations from Genesee County, Orange County, and Steuben County, NY respectively.

^bRegression parameters were estimated using a three-parameter log-logistic model, $Y = \frac{d}{1 + \exp(b(\log x - \log e))}$, where *b* represents the slope of the curve at the inflection point, *d* represents the upper limit, and *e* represents the dose of glyphosate needed to cause 50% biomass reduction (ED₅₀) compared with the nontreated control (NTC).

^cED₅₀, the effective dose of glyphosate required to reduce the biomass of each population relative to the NTC by 50%; ED₉₀, the effective dose of glyphosate required to reduce the biomass of each population relative to the NTC by 90%.

^dR/S represents the resistant:susceptible ratio between the known susceptible (NE-S) and the suspected resistant NY populations (NY-GEN, NY-ORA, NY-STE). The R/S ratio was calculated by dividing the ED₅₀ of each suspected GR population by the ED₅₀ of the GS population.

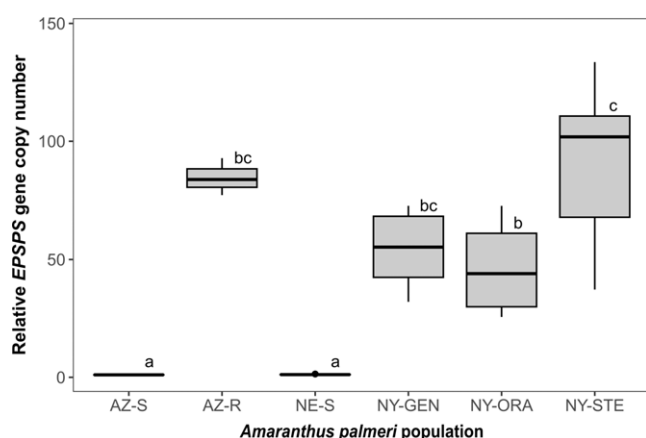


Figure 3. The relative 5-enol-pyruvylshikimate-3-phosphate synthase (*EPSPS*) gene copy numbers of glyphosate-resistant (GR) and glyphosate-susceptible (GS) *Amaranthus palmeri* populations (*n* = 6 biological replicates). The GR populations included a characterized check from Arizona (AZ-R) and the accessions from Genesee (NY-GEN), Orange (NY-ORA), and Steuben (NY-STE) counties in New York. The GS populations included characterized accessions from Nebraska (NE-S) and Arizona (AZ-S).

Response to Alternative Herbicide Chemistries

All populations were controlled 90% to 100% at 21 DAT following applications of prometryn and linuron (WSSA Group 5), glufosinate-ammonium (WSSA Group 10), and paraquat (WSSA Group 22) at labeled rates (Table 3). Mortality of 85% to 100% and 95% to 100% was observed for plants treated with fomesafen and flumioxazin, respectively, while oxyfluorfen caused 60% to 75% mortality of all populations. Mortality following application of ALS-inhibiting herbicides ranged from 0% to 42% across the NY populations, indicating that none of the suspected GR accessions were effectively controlled by the WSSA Group 2 herbicides tested in this study. The mortality of the NE-S population to WSSA Group 2 herbicides ranged from 20% (halosulfuron-methyl) to 70% (rimsulfuron); 33% and 42% mortality was observed for cloransulam-methyl and chlorimuron-methyl, respectively. NY-GEN plants were not effectively controlled by atrazine, with 90% survival observed as compared with only 15%, 40%, and 35% for NY-ORA, NY-STE, and NE-S, respectively. Mesotrione caused variable levels of mortality for the different populations; 90%, 75%, 35%, and 30% of the NE-S, NY-ORA, NY-GEN, and NY-STE plants were controlled, respectively.

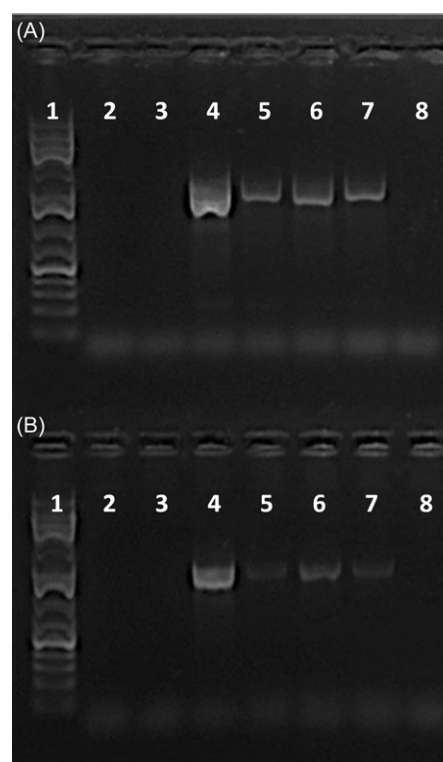


Figure 4. Gel image illustrating polymerase chain reaction (PCR) analysis of the 5-enol-pyruvylshikimate-3-phosphate synthase (*EPSPS*) extrachromosomal circular DNA (eccDNA) cassette markers (A) A (1,757 bp) and (B) C (1,554 bp) in glyphosate-resistant (GR) and glyphosate-susceptible (GS) *Amaranthus palmeri* populations from Arizona, Nebraska, and Genesee, Orange, and Steuben counties in New York. Lanes include (1) 1-kb ladder, (2) no template negative control, (3) Arizona susceptible (AZ-S), (4) Arizona resistant (AZ-R), (5) Genesee (NY-GEN), (6) Orange (NY-ORA), and (7) Steuben (NY-STE) counties, and (8) Nebraska susceptible (NE-S). Individuals from all New York populations amplified both *EPSPS* cassette primers similar to the Arizona resistant positive control. Each sample tested displayed results similar to those shown in the figure.

Across all populations, mortality ranged from 75% to 100% for 2,4-D and dicamba.

Relative *A. palmeri* biomass did not differ significantly between the experimental runs (*P* = 0.126); therefore, data were pooled across runs (Figure 5). Due to substantial mortality, there were no significant differences among populations with respect to relative biomass following treatment with 2,4-D, dicamba, prometryn,

Table 3. Percent mortality of Nebraska and New York *Amaranthus palmeri* populations following applications of several postemergence herbicides^a

Active ingredient ^b	WSSA Group ^c	Herbicide family	<i>A. palmeri</i> mortality at 21 DAT ^d			
			NE-S	NY-GEN	NY-ORA	NY-STE
Chlorimuron-ethyl	2	Sulfonylureas	42	25	25	42
Cloransulam-methyl	2	Triazolopyrimidine	33	8	0	8
Halosulfuron-methyl*	2	Sulfonylureas	20	15	10	15
Rimsulfuron*	2	Sulfonylureas	70	30	10	10
2,4-D	4	Phenoxy-carboxylates	100	80	100	75
Dicamba	4	Benzoic acid	85	95	100	90
Atrazine	5	Triazine	65	10	85	60
Prometryn*	5	Triazine	100	90	100	100
Linuron	5	Substituted ureas	100	100	100	100
Glufosinate-ammonium	10	Phosphinic acids	100	100	100	100
Flumioxazin	14	<i>N</i> -phenyl-imides	100	95	100	95
Fomesafen*	14	Diphenyl ethers	100	85	100	100
Oxyfluorfen	14	Diphenyl ethers	75	60	65	70
Paraquat*	22	Bipyridilium	100	100	100	100
Mesotrione*	27	Triketone	90	35	75	30
Topramezone†	27	Pyrazoles	100	65	100	85

^aPopulations with mortality $\leq 50\%$ were considered ineffectively controlled by an herbicide.

^bActive ingredients displayed with an asterisk (*) and a dagger (†) included nonionic surfactant at 0.25% (v/v) and methylated seed oil at 1% (v/v) in the spray mix, respectively.

^cWSSA, Weed Science Society of America.

^dDAT, days after treatment; NE-S, glyphosate-susceptible population from Keith County, NE; NY-GEN, NY-ORA, NY-STE, glyphosate-resistant populations from Genesee County, Orange County, and Steuben County, NY, respectively.

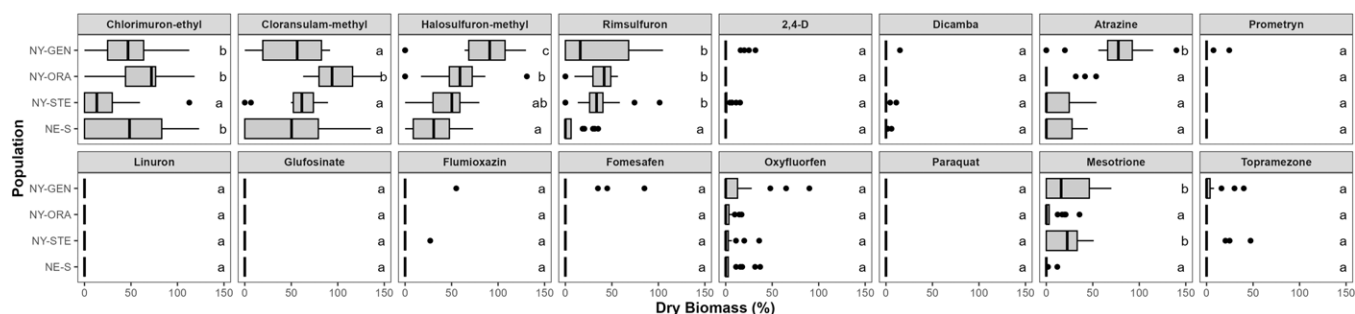


Figure 5. Relative biomass at 21 d after treatment of *Amaranthus palmeri* populations from Nebraska (NE-S) and Genesee (NY-GEN), Orange (NY-ORA), and Steuben (NY-STE) counties in New York in response to herbicide. Relative biomass is expressed as a percent of the mean nontreated control (NTC) and calculated using the following equation: $\text{Relative biomass} = \frac{DB_{EU}}{DB_{NTC}} \times 100$ with DB_{EU} representing the dry biomass of the experimental unit and DB_{NTC} representing the mean biomass of 6 nontreated control replicates for the appropriate population. Treatments with the same letters did not significantly differ according to Tukey's honestly significant difference ($\alpha = 0.05$).

linuron, glufosinate-ammonium, flumioxazin, fomesafen, oxyfluorfen, paraquat, and topramezone. For the chlorimuron-ethyl treatment, the NY-STE population had significantly lower relative biomass compared with the other populations; there were no significant differences with respect to biomass among the NE-S, NY-GEN, and NY-ORA populations. Chlorimuron-ethyl reduced the biomass of the NY-STE, NE-S, NY-GEN, and NY-ORA by 75%, 52%, 56%, and 42%, respectively. The NY-ORA population had significantly higher relative biomass compared with the other populations following treatment with cloransulam-methyl. Halosulfuron-methyl reduced the biomass of NY-GEN, NY-ORA, NY-STE, and NE-S by 11%, 43%, 57%, and 71%, respectively; the NY-GEN and NY-ORA populations differed significantly from NE-S. Overall, the NY-ORA and NY-GEN populations appeared less sensitive to various ALS-inhibiting chemical families than the reference sensitive population, warranting further investigation to assess potential cross-resistance to ALS-inhibiting herbicides. With respect to atrazine, relative biomass was significantly higher for NY-GEN (74%) compared with all other populations (6% to 14%). Mesotrione

reduced the mean percent biomass of NY-GEN and NY-STE by 75% and 80% respectively, while the NE-S and NY ORA populations were almost completely controlled. Data from this study suggest that the NY-GEN population, in addition to being resistant to glyphosate, may be less sensitive to WSSA Group 2 herbicides, atrazine, and possibly mesotrione. The NY-STE and NY-ORA populations may also be less sensitive to some ALS-inhibiting chemistries. The responses of the NY populations to atrazine and mesotrione also merit further evaluation. The poor control exhibited by some of the alternative herbicide chemistries tested in this experiment may be due to dose; only one rate per active ingredient was selected for evaluation in this study. More robust screening is required to fully describe *A. palmeri* control potential. Ongoing dose–response studies are being conducted to quantify the levels and assess the mechanisms of potential resistance from NY populations to chlorimuron-ethyl, cloransulam-methyl, atrazine, and mesotrione.

This work confirms the presence *A. palmeri* resistant to glyphosate in NY. The suspected GR populations have resistance levels ranging from 42 to 67 times that of the susceptible NE

population. The reduced efficacy of ALS, PSII, and HPPD inhibitors in controlling populations assessed in this study is consistent with previous reports. Several *A. palmeri* populations have developed resistance to single herbicides belonging to WSSA Groups 2, 3, 5, 6, 9, 10, 14, 15, and 27. Additionally, populations resistant to more than one herbicide SOA have been identified (Heap 2024). For example, Faleco et al. (2022) found a newly introduced *A. palmeri* population in Wisconsin that showed resistance to atrazine, glyphosate, and imazethapyr. While Chahal et al. (2017) found that glufosinate-ammonium effectively controlled the multiple-resistance populations from NE, Priess et al. (2022) confirmed the existence of a population resistant to glufosinate-ammonium and suspected resistance to imazethapyr, pendimethalin, 2,4-D, glyphosate, fomesafen, S-metolachlor, mesotrione, and tembotrione in AR. Finally, a population resistant to WSSA Groups 2, 4, 5, 6, 9, 14, and 27 was reported in KS (Shyam et al. 2021).

The adoption of herbicide-tolerant crops over the last few decades has significantly reduced the diversity of SOAs in several cropping systems (Kniss 2018). The overreliance on single SOAs, such as glyphosate, has hastened the evolution and proliferation of herbicide resistance across several weed species and production systems (Boyd et al. 2022; Culpepper et al. 2006; Norsworthy et al. 2012). While the newly introduced NY populations are still controlled by several of the herbicide SOAs tested, specifically auxin mimics, PPO inhibitors, and photosystem I electron diverters, this sensitivity might be temporary. To maintain the efficacy of these herbicides, efforts must be made to reduce selection pressure through the deployment of diversified weed management techniques including prevention, cultural practices, and mechanical options for control (Norsworthy et al. 2012). While practicing integrated weed management offers several benefits, the short-term costs may not favor implementation of best management practices that provide delayed economic benefit. Efforts to facilitate the adoption of multifaceted approaches to weed management must be ongoing.

The presence of GR *A. palmeri* in NY and its reduced sensitivity to alternative chemistries only increases the challenges facing NY growers, as other HR species are present in the state, including common lambsquarters (*Chenopodium album* L.), smooth pigweed (*Amaranthus hybridus* L.), waterhemp [*Amaranthus tuberculatus* (Moq.) Sauer], common ragweed (*Ambrosia artemisiifolia* L.), common groundsel (*Senecio vulgaris* L.), and horseweed [*Coryza canadensis* (L.) Cronquist]. This is particularly concerning, especially considering that very few new herbicide SOAs have been introduced over the last three decades. The number of herbicides available to NY corn, soybean, and vegetable growers is diminishing and unlikely to rebound because of the rapidly changing regulatory environment due to future compliance with the Endangered Species Act. It is also possible that resistance could develop relatively quickly to new herbicides released to market because of increased selection pressure in response to the lack of other chemical control options. Considering all these factors, growers should look to integrated weed management for guidance and incorporate non-chemical based control options into their production systems. These include mechanical methods such as tillage and cultivation, preventative measures like harvest weed seed control, and novel technologies, including electrical weed control. Furthermore, growers and land managers must be cautious of practices that can introduce *A. palmeri* and further its spread. This weed can easily be introduced to new areas on agricultural equipment, through irrigation, and by birds (Boyd

et al. 2022; Norsworthy et al. 2014; Proctor 1968). Equipment, especially items purchased from areas where *A. palmeri* is common, should be thoroughly inspected and cleaned. With climate change, *A. palmeri* is expected to spread farther north (Eceiza et al. 2022). Successful eradication is possible but unlikely. Regardless, management efforts will require rapid establishment of a regulatory framework, access to funds, collaboration among various partners, concerted efforts toward educating the public, and actively addressing new infestations. Agricultural professionals and the public must remain vigilant and take steps to prevent future introductions, eradicate infestations early, and limit their spread.

Acknowledgments. Many thanks to members of the Gaines lab for training in molecular procedures.

Funding statement. This work was supported by the National Institute of Food and Agriculture, U.S. Department of Agriculture Hatch project (2020-21-230) “Documenting Herbicide Resistant Palmer Amaranth and Waterhemp in NY and Identifying the Parameters Influencing Spread”.

Competing interests. The authors declare no competing interests.

References

- Bates D, Mächler M, Bolker BM, Walker SC (2015) Fitting linear mixed-effects models using lme4. *J Stat Softw* 67:1–48
- Battaglin WA, Meyer MT, Kuivila KM, Dietze JE (2014) Glyphosate and its degradation product AMPA occur frequently and widely in U.S. soils, surface water, groundwater, and precipitation. *J Am Water Resour Assoc* 50:275–290
- Benbrook CM (2016) Trends in glyphosate herbicide use in the United States and globally. *Environ Sci Eur* 28:3
- Boyd NS, Moretti ML, Sosnoskie LM, Singh V, Kanissery R, Sharpe S, Besançon T, Culpepper S, Nurse R, Hatterman-Valenti H, Mosqueda E, Robinson D, Cutulle M, Sandhu R (2022) Occurrence and management of herbicide resistance in annual vegetable production systems in North America. *Weed Sci* 70:515–528
- Chahal PS, Varanasi VK, Jugulam M, Jhala AJ (2017) Glyphosate-resistant Palmer amaranth (*Amaranthus palmeri*) in Nebraska: confirmation, EPSPS gene amplification, and response to POST corn and soybean herbicides. *Weed Technol* 31:80–93
- Culpepper AS, Grey TL, Vencill WK, Kichler JM, Webster TM, Brown SM, York AC, Davis JW, Hanna WW (2006) Glyphosate-resistant Palmer amaranth (*Amaranthus palmeri*) confirmed in Georgia. *Weed Sci* 54:620–626
- Dayan FE, Duke SO (2020) Discovery for new herbicide sites of action by quantification of plant primary metabolite and enzyme pools. *Engineering* 6:509–514
- Duke SO (2012) Why have no new herbicide modes of action appeared in recent years? *Pest Manag Sci* 68:505–512
- Eceiza MV, Gil-Monreal M, Barco-Antoñanzas M, Zabalza A, Royuela M (2022) The moderate oxidative stress induced by glyphosate is not detected in *Amaranthus palmeri* plants overexpressing EPSPS. *J Plant Physiol* 274:153720
- Ehleringer J (1983) Ecophysiology of *Amaranthus palmeri*, a Sonoran Desert summer annual. *Oecologia* 57:107–112
- Faleco FA, Oliveira MC, Arneson NJ, Renz M, Stoltenberg DE, Werle R (2022) Multiple resistance to imazethapyr, atrazine, and glyphosate in a recently introduced Palmer amaranth (*Amaranthus palmeri*) accession in Wisconsin. *Weed Technol* 36:344–351
- Farmer JA, Webb EB, Pierce II RA, Bradley KW (2017) Evaluating the potential for weed seed dispersal based on waterfowl consumption and seed viability. *Pest Manag Sci* 73:2592–2603
- Gaines TA, Barker AL, Patterson EL, Westra EP, Kniss AR (2016) EPSPS gene copy number and whole-plant glyphosate resistance level in *Kochia scoparia*. *PLoS ONE* 11:1–11

- Gaines TA, Duke SO, Morran S, Rigon CAG, Tranel PJ, Küpper A, Dayan FE (2020) Mechanisms of evolved herbicide resistance. *J Biol Chem* 295:10307–10330
- Gaines TA, Zhang W, Wang D, Bukun B, Chisholm ST, Shaner DL, Nissen SJ, Patzoldt WL, Tranel PJ, Culpepper AS, Grey TL, Webster TM, Vencill WK, Sammons RD, Jiang J, et al. (2010) Gene amplification confers glyphosate resistance in *Amaranthus palmeri*. *Proc Natl Acad Sci USA* 107:1029–1034
- Heap I (2024) The International Herbicide-Resistant Weed Database. <http://www.weedscience.org>. Accessed: January 9, 2024
- Keeley PE, Carter CH, Thullen RJ (1987) Influence of planting date on growth of Palmer amaranth (*Amaranthus palmeri*). *Weed Sci* 35:199–204
- Knezevic SZ, Streibig JC, Ritz C (2007) Utilizing R software package for dose-response studies: the concept and data analysis. *Weed Technol* 21:840–848
- Koo DH, Molin WT, Saski CA, Jiang J, Putta K, Jugulam M, Friebe B, Gill BS (2018) Extrachromosomal circular DNA-based amplification and transmission of herbicide resistance in crop weed *Amaranthus palmeri*. *Proc Natl Acad Sci USA* 115:3332–3337
- Kniss AR (2018) Genetically engineered herbicide-resistant crops and herbicide-resistant weed evolution in the United States. *Weed Sci* 66:260–273
- Kumar V, Liu R, Boyer G, Stahlman PW (2019) Confirmation of 2,4-D resistance and identification of multiple resistance in a Kansas Palmer amaranth (*Amaranthus palmeri*) population. *Pest Manag Sci* 75:2925–2933
- Kumar V, Stahlman PW, Boyer G (2018) Palmer Amaranth Populations from Kansas with Multiple Resistance to Glyphosate, Chlorsulfuron, Mesotrione, and Atrazine. *Kansas Agric Exp Stn Res Reports* 4, 10.4148/2378-5977.7611
- Küpper A, Manmathan HK, Giacomini D, Patterson EL, McCloskey WB, Gaines TA (2018) Population genetic structure in glyphosate-resistant and -susceptible Palmer amaranth (*Amaranthus palmeri*) populations using genotyping-by-sequencing (GBS). *Front Plant Sci* 9:1–14
- Kuznetsova A, Brockhoff PB, Christensen RHB (2017) lmerTest package: tests in linear mixed effects models. *J Stat Softw* 82:1–26
- Lenth R (2023) emmeans: Estimated Marginal Means, aka Least-Squares Means. R package version 1.8.8, <https://CRAN.R-project.org/package=emmeans>. Accessed: January 12, 2024
- Mohseni-Moghadam M, Schroeder J, Ashigh J (2013) Mechanism of resistance and inheritance in glyphosate resistant Palmer amaranth (*Amaranthus palmeri*) populations from New Mexico, USA. *Weed Sci* 61:517–525
- Molin WT, Patterson EL, Saski CA (2020a) Homogeneity among glyphosate-resistant *Amaranthus palmeri* in geographically distant locations. *PLoS ONE* 15:1–14
- Molin WT, Wright AA, VanGessel MJ, McCloskey WB, Jugulam M, Hoagland RE (2018) Survey of the genomic landscape surrounding the 5-enolpyruvylshikimate-3-phosphate synthase (EPSPS) gene in glyphosate-resistant *Amaranthus palmeri* from geographically distant populations in the USA. *Pest Manag Sci* 74:1109–1117
- Molin WT, Yaguchi A, Blenner M, Saski CA (2020b) The eccDNA replicon: a heritable, extranuclear vehicle that enables gene amplification and glyphosate resistance in *Amaranthus palmeri*. *Plant Cell* 32:2132–2140
- Norsworthy JK, Griffith G, Griffin T, Bagavathiannan M, Gbur EE (2014) In-field movement of glyphosate-resistant Palmer amaranth (*Amaranthus palmeri*) and its impact on cotton lint yield: evidence supporting a zero-threshold strategy. *Weed Sci* 62:237–249
- Norsworthy JK, Griffith GM, Scott RC, Smith KL, Oliver LR (2008) Confirmation and control of glyphosate-resistant Palmer amaranth (*Amaranthus palmeri*) in Arkansas. *Weed Technol* 22:108–113
- Norsworthy JK, Ward SM, Shaw DR, Llewellyn RS, Nichols RL, Webster TM, Bradley KW, Frisvold G, Powles SB, Burgos NR, Witt WW, Barrett M (2012) Reducing the risks of herbicide resistance: best management practices and recommendations. *Weed Sci* 60:31–62
- Priess GL, Norsworthy JK, Godara N, Mauromoustakos A, Butts TR, Roberts TL, Barber T (2022) Confirmation of glufosinate-resistant Palmer amaranth and response to other herbicides. *Weed Technol* 36:368–372
- Proctor VW (1968) Long-distance dispersal of seeds by retention in digestive tract of birds. *Science* 160:321–322
- R Core Team (2023) R: A language and environment for statistical computing. R Foundation for Statistical Computing, Vienna, Austria. <https://www.R-project.org/>
- Ritz C, Baty F, Streibig JC, Gerhard D (2015) Dose-response analysis using R. *PLoS ONE* 10:1–13
- Shaner DL, Beckie HJ (2014) The future for weed control and technology. *Pest Manag Sci* 70:1329–1339
- Shyam C, Borgato EA, Peterson DE, Dille JA, Jugulam M (2021) Predominance of metabolic resistance in a six-way-resistant Palmer amaranth (*Amaranthus palmeri*) population. *Front Plant Sci* 11:614618
- Sosnoskie LM, Webster TM, Kichler JM, MacRae AW, Grey TL, Culpepper AS (2012) Pollen-mediated dispersal of glyphosate-resistance in Palmer amaranth under field conditions. *Weed Sci* 60:366–373
- Spaunhorst DJ, Devkota P, Johnson WG, Smeda RJ, Meyer CJ, Norsworthy JK (2018) Phenology of five Palmer amaranth (*Amaranthus palmeri*) Populations grown in northern Indiana and Arkansas. *Weed Sci* 66:457–469
- Tranel PJ, Jiang W, Patzoldt WL, Wright TR (2004) Intraspecific variability of the acetolactate synthase gene. *Weed Sci* 52:236–241
- Trucco F, Jeschke MR, Rayburn AL, Tranel PJ (2005) Promiscuity in weedy amaranths: high frequency of female tall waterhemp (*Amaranthus tuberculatus*) × smooth pigweed (*A. hybridus*) hybridization under field conditions. *Weed Sci* 53:46–54
- [USDA-NASS] U.S. Department of Agriculture–National Agricultural Statistics Service (2024) 2022 Census of Agriculture. https://www.nass.usda.gov/Publications/AgCensus/2022/Full_Report/Volume_1,_Chapter_1_State_Level/New_York/nyv1.pdf. Accessed: January 22, 2024
- Van Wychen L (2022) 2022 Survey of the Most Common and Troublesome Weeds in Broadleaf Crops, Fruits & Vegetables in the United States and Canada. <https://wssa.net/wp-content/uploads/2022-Weed-Survey-Broadleaf-crops.xlsx>. Accessed: February 10, 2024
- Varanasi A, Prasad PVV, Jugulam M (2016) Impact of climate change factors on weeds and herbicide efficacy. *Adv Agron* 135:107–146
- Vila-Aiub MM, Goh SS, Gaines TA, Han H, Busi R, Yu Q, Powles SB (2014) No fitness cost of glyphosate resistance endowed by massive EPSPS gene amplification in *Amaranthus palmeri*. *Planta* 239:793–801
- Ward SM, Webster TM, Steckel LE (2013) Palmer amaranth (*Amaranthus palmeri*): a review. *Weed Technol* 27:12–27
- Westwood JH, Charudattan R, Duke SO, Fennimore SA, Marrone P, Slaughter DC, Swanton C, Zollinger R (2018) Weed management in 2050: perspectives on the future of weed science. *Weed Sci* 66:275–285
- Xin Z, Chen J (2012) A high throughput DNA extraction method with high yield and quality. *Plant Methods* 8:26
- Yu E, Blair S, Harde M, Chandler M, Thiede D, Cortilet A, Gunsolus J, Becker R (2021) Timeline of Palmer amaranth (*Amaranthus palmeri*) invasion and eradication in Minnesota. *Weed Technol* 35:802–810