

Gazelle–livestock interactions and impact of water resource development in the Ouadi Rimé–Ouadi Achim Reserve, Chad

TIM WACHER, RAJAN AMIN, JOHN NEWBY
MAHAMAT HASSAN HATCHA, KRAZIDI ABEYE, HABIB ALI
SADOCK ZEUBOBE BOURTCHIAKBÉ and FELIX NDOASSAL BANLONGAR


Abstract The Ouadi Rimé–Ouadi Achim Reserve (Réserve de l’Ouadi Rimé–Ouadi Achim) in central Chad supports large numbers of livestock and rare antelopes, and is the site of ongoing reintroductions of the scimitar-horned oryx *Oryx dammah* and addax *Addax nasomaculatus*. We present results of surveys conducted during 2011–2019 to examine patterns of relative abundance and distribution of dorcas gazelles *Gazella dorcas*, dama gazelles *Nanger dama* and livestock in relation to each other and to water sources in a 3,500 km² area in the centre of the Reserve. Dorcas gazelles numbered 7,700–18,000, moving extensively across the area. Livestock varied between c. 2,000 and 68,000 tropical livestock units across surveys, with density doubling in the wet season. Dorcas gazelle distribution was negatively associated with livestock, and livestock density was positively associated with artificial water sources. Dorcas gazelle densities were positively associated with locations where there had been wild fires in the 6 months prior to a survey. Dama gazelles were encountered only 13 times, insufficient to estimate their population size reliably. Opportunistic observations suggest dama gazelles avoid livestock and burnt ground. Our findings highlight the importance of the Reserve. We recommend the designation of a large, well-managed conservation priority zone in the Reserve’s core area in which no further development of water resources is permitted. Management of livestock numbers within this zone at or below current levels is essential to integrate national goals for both biodiversity conservation and pastoralism development.

Keywords Chad, dama gazelle, dorcas gazelle, livestock, Ouadi Rimé–Ouadi Achim Reserve, pastoralism, Sahel, sustainable development

Introduction

The 77,950 km² Ouadi Rimé–Ouadi Achim Reserve (Réserve de l’Ouadi Rimé–Ouadi Achim) in central Chad is one of only a few protected areas, and by far the largest, representing Africa’s vast Sahelian grassland biome (Brugiere & Scholte, 2013; Protected Planet, 2020). When legally established as an IUCN category IV reserve in 1969, the objective was to protect significant populations of threatened Sahelo–Saharan endemic species (Newby, 1978) such as the scimitar-horned oryx *Oryx dammah* (categorized on the IUCN Red List as Extinct in the Wild; IUCN/SSC Antelope Specialist Group, 2016c), dorcas gazelle *Gazella dorcas* (Vulnerable; IUCN/SSC Antelope Specialist Group, 2017), dama gazelle *Nanger dama* (Critically Endangered; IUCN/SSC Antelope Specialist Group, 2016b) and addax *Addax nasomaculatus* (Critically Endangered; IUCN/SSC Antelope Specialist Group, 2016a). The Reserve also supported the North African ostrich *Struthio camelus*, Arabian *Ardeotis arabs*, Nubian *Ardeotis nuba* and Denham’s *Neotis denhami* bustards, and small populations of the West African cheetah *Acinonyx jubatus* and African wild dog *Lycaon pictus*. Traditional transhumant livestock management, originally low impact and highly seasonal, has always been permitted in the Reserve, but hunting and tree cutting are banned. The populations of oryx, addax and ostrich were extirpated during a period of civil unrest in the late 1970s and early 1980s (Newby, 1978, 1980, 1988). The scimitar-horned oryx was first categorized as Extinct in the Wild on the IUCN Red List in 2000. Since the 1970s, as elsewhere (De Leeuw & Tothill, 1990), development and anthropogenic pressures such as density of people and livestock, water use, grazing pressure, disturbance, vehicle traffic and grass fires have increased in the Reserve.

Following the decision of the Government of Chad to support the restoration of the scimitar-horned oryx and other wildlife populations (Bemadjan et al., 2012), we assessed numbers and spatial interactions between dorcas and dama gazelles and livestock in the Reserve. This study is based on transect surveys conducted to assess the feasibility of reintroducing the oryx to the area, and continued during the initial stages of this reintroduction. We report on trends in densities and distribution of the gazelles and livestock, based on data from eight large-scale, vehicle-based

TIM WACHER (Corresponding author,  orcid.org/0000-0002-5552-7577, tim.wacher@zsl.org) and RAJAN AMIN Conservation & Policy, Zoological Society of London, London, NW1 4RY, UK

JOHN NEWBY Sahara Conservation Fund, Saint Maur des Fossés, France

KRAZIDI ABEYE and HABIB ALI Sahara Conservation Fund, N’Djamena, Chad

MAHAMAT HASSAN HATCHA, SADOCK ZEUBOBE BOURTCHIAKBÉ and FELIX NDOASSAL BANLONGAR Direction de la Faune et des Aires Protégées, N’Djamena, Chad

Received 27 April 2021. Revision requested 29 July 2021.

Accepted 27 October 2021. First published online 25 May 2022.

This is an Open Access article, distributed under the terms of the Creative Commons Attribution licence (<https://creativecommons.org/licenses/by/4.0/>), which permits unrestricted re-use, distribution, and reproduction in any medium, provided the original work is properly cited.

Oryx, 2023, 57(2), 205–215 © The Author(s), 2022. Published by Cambridge University Press on behalf of Fauna & Flora International doi:10.1017/S0030605321001629

<https://doi.org/10.1017/S0030605321001629> Published online by Cambridge University Press

line transect surveys conducted in the core of the Reserve during 2011–2019. Our aim was to determine how the presence of livestock, artificial water sources and bush fires affects the distribution of wild ungulates. With oryx (Duthie et al., 2018), addax and ostrich reintroductions underway and steps taken to support the dama gazelle in the Reserve, we use evidence from the surveys to recommend management actions to ensure that both conservation and livestock sector objectives are achieved.

Study area

The study area is in the central Ouadi Rimé–Ouadi Achim Reserve, Chad (Fig. 1). The nearest towns are Arada (80 km to the east) and Biltine (117 km to the east-south-east). The habitat is Sahelian grassland on flat grey soils overlain in a few places by vegetated fixed dune formations. Altitude descends from 400 m in the east to 374 m in the west of the 70-km wide study area. The shallow gradient on flat land creates diffuse run-off along broad seasonal drainage lines (locally called *ouadis*). There are no significant hills or rocky outcrops, but vegetated low dunes form a belt of undulating sandy substrates across the centre of the study site.

The mean temperature is 35 °C (range 21–47 °C) in the hottest month, May, and 22 °C (9–37 °C) in the coolest month, January. In the driest month, April, relative humidity averages 9% (1.7–27.5%), and 72% (27.8–99.9%) in the most humid month, August. The annual passage of the Intertropical Convergence Zone creates a single wet season during July–September, with occasional dust storms as winds change from north-easterly, bringing humid air from the south-west. Mean annual rainfall at the study site during 2017–2020 was 190 mm (139–273 mm). Typically, there are no natural water sources in the study area for 9 months of the year, but following rainstorms, which are often local in distribution, small temporary water holes last for a few days or weeks. Within the *ouadis*, longer-lasting chains of shallow, temporary lakes (called *rahads*) may form, which typically measure 50–100 m across. In the east of the study area some of these have been artificially enlarged to create so-called *hafiris*, providing water for increased numbers of livestock and locally prolonging the period of grazing pressure and human occupation further into the dry season (Fig. 1).

The grasslands are dominated by annual grasses, of which *Aristida mutabilis* Trin. & Rupr., *Aristida funiculata* Trin. & Rupr., *Dactyloctenium aegyptium* (L.) Willd., *Schoenefeldia gracilis* Kunth., *Cenchrus biflorus* Roxb. and *Brachiaria* sp. (Trin.) Griseb are important for ungulates. On sandy soil the perennial *Panicum turgidum* Forssk. is also important, but now appears to be less abundant than formerly (Gillet, 1961; JN, pers. obs., 2007–2020). Following rain, the legume *Indigofera colutea* (Burm f.)

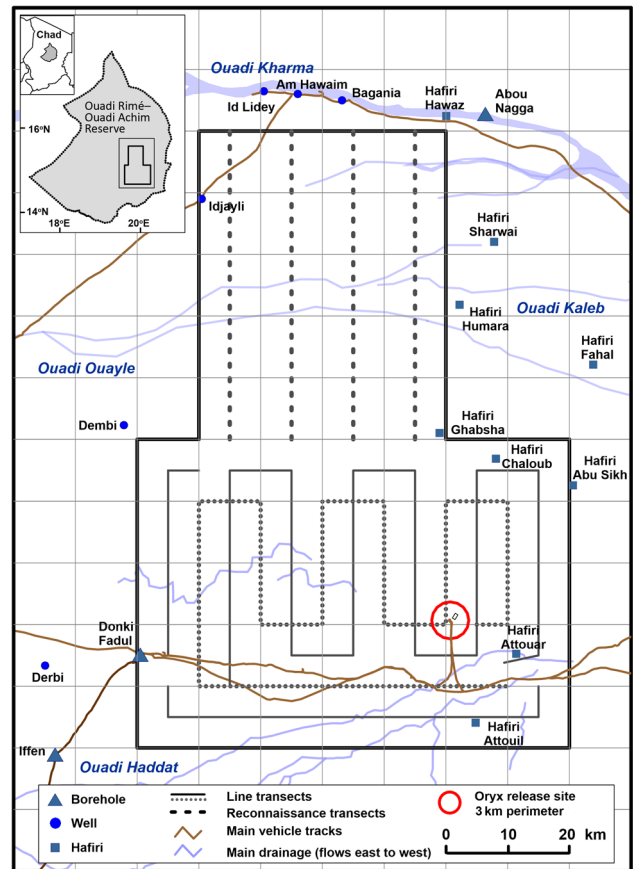


FIG. 1 Location of the study area in the Ouadi Rimé–Ouadi Achim Reserve, Chad, and details of the line transect and reconnaissance zones in the study area. We used eight core line transect routes in 2015–2019 (solid lines) and four reconnaissance transect routes in 2017 (dashed lines). An additional seven line transects were interleaved simultaneously in parallel to the primary route in 2019 only (dotted line). Natural water hole depressions that have been artificially enlarged (*hafiris*), major drainage lines (*ouadis*) and main access routes to the release site of the scimitar-horned oryx *Oryx dammah* are also shown.

Merrill (selected by gazelles and oryx) forms dense local patches, and stands of the bushy perennial *Chrozophora brocchiana* (Vis) Schweinf. are characteristic of drainage depressions. The bitter melon *Citrullus colocynthis* (L.) Schrad. is widespread, and the water content of its leaves and fruit is important for wildlife and livestock. Following the short growing season, from late September the grasses and herbs desiccate to form dense, dry hay and the land becomes vulnerable to fire.

Shade is provided mainly by desert date trees *Balanites aegyptiaca* (L.) Delile, growing as widely scattered individuals or in small thickets, and less commonly by *Acacia tortilis* (Forssk.) Hayne, which often indicate seasonal water collection points. On some soil types scattered stands of shrubbier *Capparis decidua* (Forssk.) Edgew. and *Boscia senegalensis* (Pers.) Lam. predominate.

Methods

Surveys

The aim of the eight surveys conducted during 2011–2019 was to establish baseline estimates of densities and relative distribution of wild and domestic ungulates in the central Reserve. The survey area is a small part of an open system across which dorcas and dama gazelles and livestock move freely. The term ‘population’ thus refers here only to the animals using the study area at the time of a survey.

Surveys used standard line transect methods (Buckland et al., 2001; Young et al., 2010; Baamrane, 2013; Le Moullec et al., 2017). The survey zone covered c. 3,500 km² (3% of the Reserve) and was selected as an area of relatively low human activity, with no local development of water wells, and a representative mix of vegetated fixed dune and floodplain habitats in the core of the Reserve. This included the only area where the Critically Endangered dama gazelle was reported to be regularly observed. Transect orientation and the central survey area were consistent throughout the study, but transect layout varied slightly during the initial exploratory phases in 2011–2013, before the design was fixed once longer-term funding was assured (Table 1). During 2015–2019, surveys used a standard core framework of seven fixed transects, spaced 10 km apart (Fig. 1). A continuous line transect design improved efficiency. Transects were orientated to traverse low dune habitats running east to west across the survey zone and extended into floodplain habitats either side. In the latter four surveys, an east–west transect was added to the south within the floodplain of Ouadi Haddat (Fig. 1).

In the 2017 wet and dry seasons, we extended the systematic assessment of wild and domestic ungulate distribution by surveying an additional 40 × 50 km contiguous reconnaissance survey block to the north of the line transect study zone (Fig. 1). In the reconnaissance block, data were collected as counts only, by two teams in separate vehicles working on parallel transects 10 km apart. Species encounter rates (per 10 × 10 km grid cell) of the reconnaissance survey block and line transect zone were combined to generate distribution maps of wild ungulates and livestock. In the final line transect survey (2019), an additional set of transects was inserted between the established transects to create 5-km transect spacing, driven by two teams working in parallel, to increase sampling effort to 15 transects and improve precision of counts and density estimates (Bårdsen & Fox, 2006; Strindberg et al., 2010).

Because dama gazelles were encountered only a total of 13 times during all surveys, we also analysed the distribution of 78 additional, opportunistic observations of this species collected during 2–3 month periods of continuous field work in the 2016 wet season and the following dry season in 2017. In these periods we recorded all observed wildlife and

TABLE 1 Summary statistics and results from eight line transect surveys of the central zone of the Ouadi Rimé–Ouadi Achim Reserve, Chad, 2011–2019.

Survey month	Season	Number of transects	Total transect length (km)	Survey area (km ²)	Number of dorcas gazelle groups (truncated at 400 m)	Number of dorcas gazelles in survey block (95% CI), CV ¹ (%)	Number of dama gazelle groups	Number of individual dama gazelles	Number of livestock groups (truncated at 490 m)	Number of livestock units ² in survey block (95% CI), CV ¹ (%)
Feb. 2011	Dry	8	222	1,109	199	7,777 (5,929–18,751), 12.8	1	1	13	1,791 (426–7,533), 74.6
Sep. 2011	Wet	11	295	2,213	269	14,645 (11,437–18,751), 12.0	0	0	31	14,020 (5,683–34,586), 46.7
Sep. 2013	Wet	6	240	2,400	150	8,379 (4,775–14,704), 23.5	0	0	109	63,548 (18,996–213,000), 51.4
Sep. 2015	Wet	7	272	2,715	160	9,002 (4,570–17,732), 29.3	6	9	108	68,485 (21,428–219,000), 51.3
Feb. 2017	Dry	8	345	3,500	236	16,765 (12,733–22,072), 12.9	0	0	89	50,187 (26,579–94,765), 31.2
Sep. 2017	Wet	8	350	3,500	124	5,736 (3,109–10,684), 27.3	1	1	72	23,119 (7,089–75,394), 55.3
Mar. 2018	Dry	8	345	3,450	222	12,890 (8,469–19,618), 18.7	3	7	67	27,326 (11,535–64,732), 42.1
Jan. 2019	Dry	15	575	3,500	510	18,250 (14,517–22,945), 11.0	2	7	90	15,221 (7,885–19,380), 33.5

¹CV, coefficient of variation.

²Tropical livestock unit, equivalent of mature individual weighing 250 kg (see text for details).

livestock, and all routes driven, and mapped perimeters of bushfires. We then overlaid locations of dama gazelle observations and fires on livestock encounter rate heat maps, using a 10×10 km grid in *Surfer 11.6.1159* (Golden Software, Golden, USA).

On line and reconnaissance transects, survey routes prepared with GPS software (*Mapsource 6.16.3* and *Basecamp 4.7.2*; both Garmin Ltd., Olathe, USA) were displayed on dashboard mounted units. In the open terrain, the vehicle remained mostly well within 25 m of the planned transect line, with an average speed of 12–15 km/h.

We recorded wildlife and livestock observations as groups using *Cybertracker 3* (Cybertracker Conservation, 2019). Dorcas and dama gazelles often move away on being sighted. To fulfil distance sampling assumptions, we selected landmark reference points (isolated trees, small shrubs, grass tussocks or bare patches of ground) near the central position of herds when first seen. We then measured the distance from the transect line to these landmarks with a laser rangefinder once the vehicle was positioned perpendicular to the landmark. At right angle turns, observations originating in the external quadrant of the turn were excluded and observations originating in the interior quadrant were not double counted.

Livestock (camels, sheep, goats, cattle, horses and donkeys) were counted (or estimated for large, dense herds) individually by species, and distances measured to the central location of the assembly. We converted these counts to tropical livestock units (equivalent to a mature animal weighing 250 kg), using correction factors: 1.25 for camels, 0.7 for cattle (in herds), 0.1 for sheep, 0.08 for goats, 0.5 for donkeys and 1 for horses (Le Houerou & Hoste, 1977; FAO, 2011), to provide standardized measures. We used 16 kg as the unit weight for the dorcas gazelle (Yom-Tov et al., 1995).

We obtained satellite data on locations of fires within the survey area from ESDS (2020). As a proxy for the impact of fires, we summed the number of detected fires in each 10×10 km grid cell over 1–60 days and 61–180 days prior to the start date of each survey.

We required 3–5 days to complete each survey, operating during 07.30–17.00 each day, with a break during 12.00–14.00. Detectability of animals may thus have varied over the course of a survey as animal activity changes with time of day, cloud cover and temperature, but all surveys were conducted with as much standardization as was feasible.

Data analysis

We calculated estimates for numbers and densities of dorcas gazelles and livestock using *Distance 6.0* (Research Unit for Wildlife Population Assessment, University of St Andrews, St Andrews, UK). Uniform, half-normal and hazard rate key functions were compared, with cosine, simple polynomial

and hermite polynomial adjustment terms constrained, to ensure the detection function decreased monotonically. We used size-bias regression to account for larger groups being more likely to be sighted at longer distances than smaller groups, and maximized sample size by using a global detection function across all surveys, with truncation at 400 m for the smaller dorcas gazelle and 490 m for livestock. We used Akaike's information criterion (AIC; Sakamoto et al., 1986) to select the best models, and confirmed an acceptable fit to the data using a χ^2 test.

We assessed the trend of the dorcas gazelle population for 2013–2019, when the sample design was standardized, by regressing the natural log of the density estimates against survey year in *R 3.4.4* (R Core Team, 2019). We used density rather than estimated numbers because of variations in survey area (Table 1). We performed a Bayesian analysis (Crome et al., 1996) to estimate the probability of decline or increase, assuming a flat prior and treating the scaled likelihood curve as the posterior probability.

We examined the distribution of livestock and dorcas gazelles in relation to artificial water sources by calculating minimum linear distance from the centre of each 10×10 km transect grid cell to the nearest artificial water point using the *NNJoin* package in *QGIS 3.12* (QGIS, 2020). There were three types of artificial water sources (in order of increasing cost to use them): *hafiris* (natural water hole depressions, artificially enlarged to prolong surface water availability), cement-lined wells (hand-drawn using livestock) and boreholes (with mechanized pumps). We modelled dorcas gazelle encounter rate in each grid cell against livestock encounter rate, distance to nearest water point of each type, season, survey and fire detections in the recent and longer-term period prior to a survey, using multiple regression in *R 3.4.4* (R Core Team, 2019). Livestock encounter rate was modelled against distance to nearest water point of each type, season, survey, and recent and longer-term fire detections. We used AIC for model selection. To examine sampling efficiency, we used observed encounter rates to predict sample effort required (total transect line length) in relation to targeted level of precision, measured as the coefficient of variation (CV; Buckland et al., 2001).

Meteorological data for the study site were obtained from a HOBO 21-USB weather station established at the oryx release site base camp in 2017, as no other data close to the study area were available.

Results

Dorcas gazelle numbers and trend Estimated numbers of dorcas gazelles in the line transect study zone ranged from c. 7,700 to c. 18,000 individuals; associated mean densities were 3.5–7.0 dorcas/km² (Fig. 2a). Precision (CV) averaged 18% (11–29%) across all surveys (Table 1). The large differences

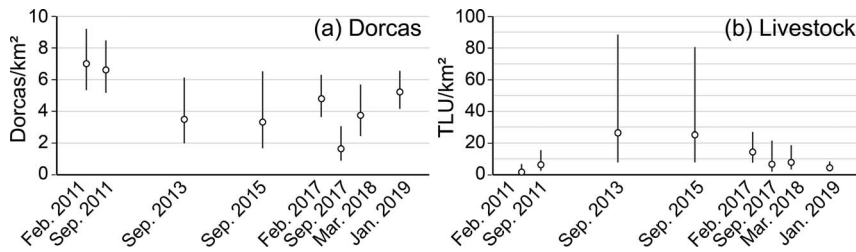


FIG. 2 Estimated densities of (a) dorcas gazelles *Gazella dorcas* and (b) livestock (TLU, tropical livestock units) in the study area during 2011–2019. The vertical lines represent the 95% CI. Note the order of magnitude difference in y-axis scale and unit body weights (c. 16 kg/dorcas individual vs 250 kg/tropical livestock unit).

between maximum and minimum numbers correspond with the movement patterns of the species in this area, with some seasonality in reproduction, although calves can be found in all months. Average dorcas density during the wet season was marginally lower than during the dry season (Table 1). Bayesian analysis showed an 81% probability of decline over 2011–2019 (Fig. 3a), influenced by high densities in the smaller scale 2011 surveys. Analysis across the latter six standardized surveys (2015–2019) showed a positive trend, with 95% probability of increasing numbers (Fig. 3b).

Livestock numbers Mean estimates for livestock numbers ranged between c. 2,000 and c. 68,000 tropical livestock units, with low precision (CV 30–74%; Fig. 2b, Table 1). The low precision was associated with large variation in encounter rate and group size between transects, and prevents analysis of trend in livestock numbers. The average livestock density during the wet season was c. 16 tropical livestock units/km², more than twice that of the dry season (Table 1). Livestock made up > 90% of ungulate biomass (range 93–99%) present in the study zone in every survey except the first, which was a dry season survey when unusually low livestock numbers were recorded.

Dorcas gazelle distribution in relation to livestock, artificial water supply, season and fire The multiple regression model that included livestock encounter rate and season as explanatory variables had the lowest AIC value and showed a significant negative association ($P < 0.05$) between dorcas and livestock encounter rates, with little variation between seasons (Figs 4 & 5). Although there was no

significant relationship between dorcas gazelle density and fire frequency during either 1–60 days or 61–180 days prior to the surveys at the 10 × 10 km grid scale, there was a positive relationship ($P < 0.05$) between dorcas gazelle density and fire frequency over the full interval of 1–180 days prior to each survey at the scale of the whole study area.

Livestock distribution in relation to artificial water supply, season and fire Livestock encounter rate was positively associated with the distribution of seasonal *hafiri* waterholes ($P \ll 0.05$), particularly in the wet season when *hafiris* were full (Fig. 6). Livestock distribution was not significantly associated with fire detections at the 10 × 10 km grid scale during the 60-days or 61–180 days prior to the survey. Across the entire study area, livestock density did not have a significant relationship ($P = 0.09$) with fire detection frequency.

Dama gazelle distribution in relation to livestock and fire The maximum opportunistic single-day count for dama gazelles across 2011–2019 was 32. Only two sightings of dama gazelles outside the study area have been reported in this period. Distribution of dama gazelles during the wet season of 2016 compared to the dry season of 2017 suggests they moved to avoid both livestock and burnt areas (Fig. 7).

Sample effort and precision The mean encounter rate across the eight surveys indicated a survey effort of c. 470 km is needed to achieve a CV of 10% for dorcas gazelles. The estimated effort to achieve a CV of 20% for livestock groups is 483 km.

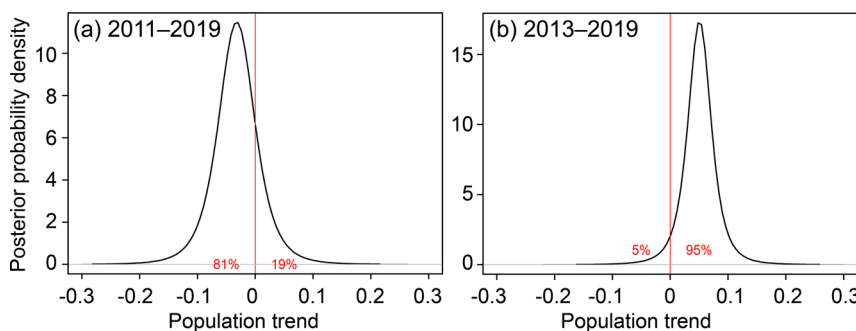


FIG. 3 Bayesian posterior probability distributions of trend in numbers of dorcas gazelles using the line transect sample zones across (a) all eight surveys (2011–2019) and (b) the latter six surveys (2013–2019), when the transect layout was standardized.

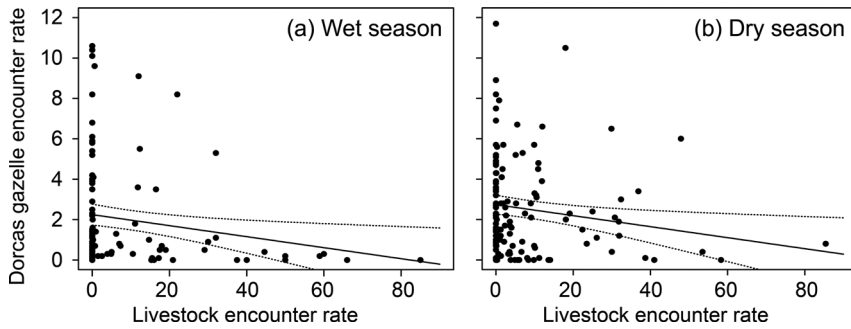


FIG. 4 Relationship between dorcas gazelle and livestock encounter rates per 10 × 10 km grid cell across all surveys in (a) the wet and (b) the dry season.

Discussion

National policy for the management of the Ouadi Rimé–Ouadi Achim Reserve seeks to restore natural biodiversity (Bemadjim et al., 2012) and improve conditions and living standards for livestock pastoralists (Bailey, 2020; World Bank Group, 2020). This first systematic study of wild and domestic ungulate numbers and relative distribution in the central Sahelian zone of Chad provides an evidence base to assist decision-making on land-use management to help meet these objectives (see also Newby, 2014).

Our findings suggest that the line transect survey design and effort has achieved reasonable precision in estimated dorcas gazelle numbers ($CV \leq 20\%$), but only the increased effort applied in our final survey (575 km) can be expected to achieve this for livestock numbers. This is because of the high variability in livestock herd sizes and species composition, depending on season and management, and varying transhumance destinations, depending on grazing conditions.

A key result of our study is that the central area of the Reserve still supports the dorcas gazelle at high densities and almost certainly holds the largest protected population

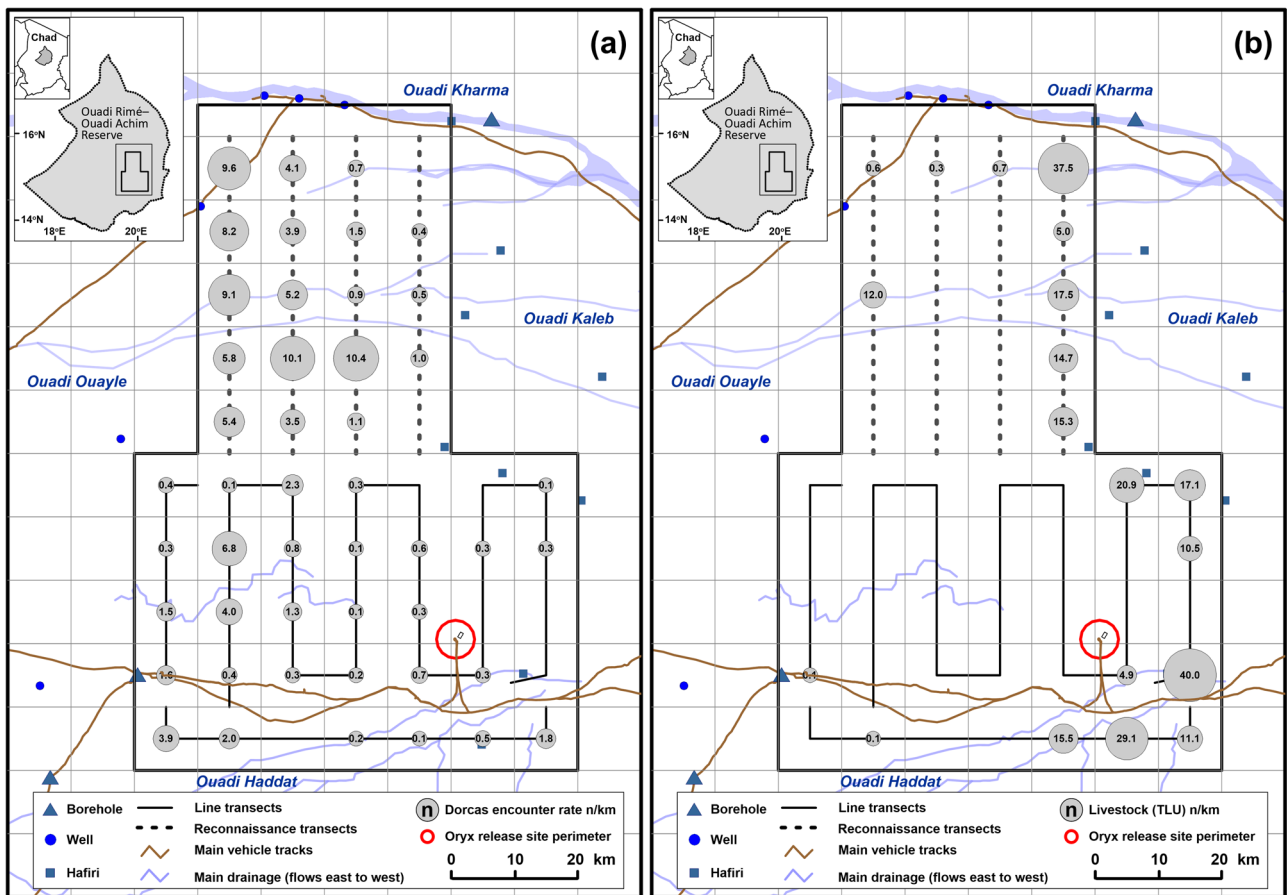


FIG. 5 Comparative distribution of (a) dorcas gazelle individuals/km and (b) combined tropical livestock units/km, derived for each 10 × 10 km grid cell across line transect and reconnaissance transect survey routes in September 2017.

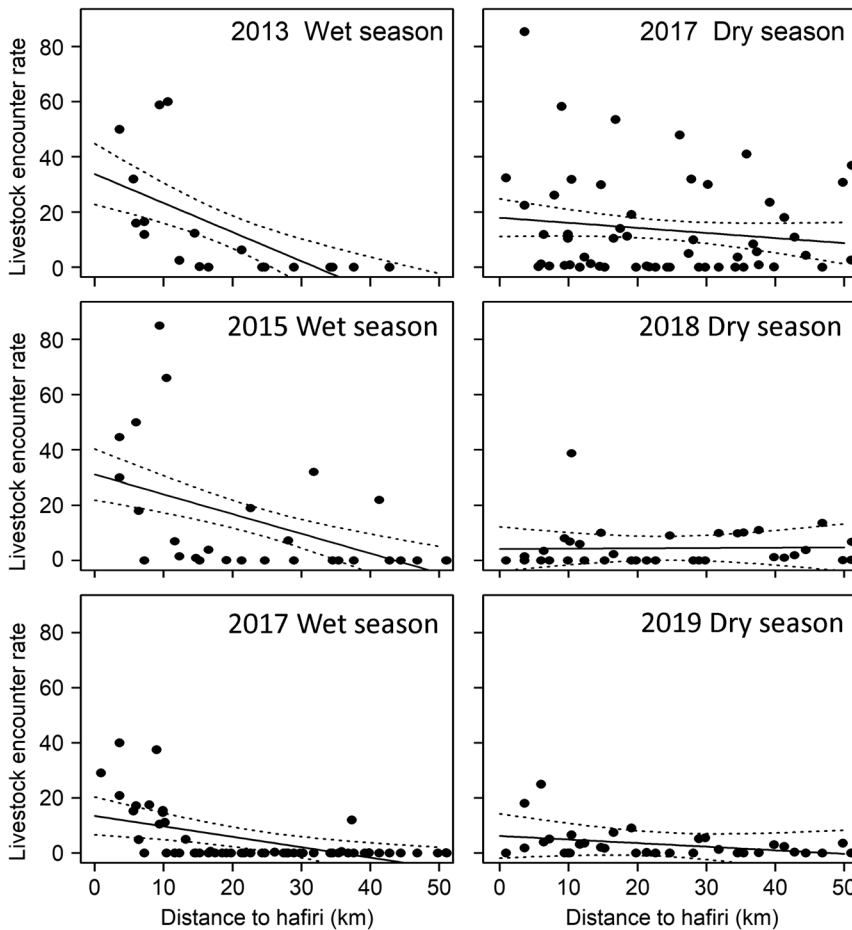


FIG. 6 Livestock encounter rate with respect to distance to *hafiri*, by season and year.

globally (see also Lafontaine et al., 2006), with no indication of persistent decline. Numbers in the study area were increasing during 2013–2019. It is not known whether this represents an increase in overall population size or increasing concentration because of environmental factors, and/or increased protection from activities related to the reintroduction of the scimitar-horned oryx. We did not examine the status of the dorcas gazelle in the wider Reserve, but it is known that significant numbers are present. The species ranges widely across the whole Reserve and can survive for long periods independently of water (Yom-Tov et al., 1995; Scholte & Hashim, 2013a). For example, in September 2017, the population in the line transect survey zone was estimated to be 5,700 (95% CI 3,100–10,700), an apparent reduction of nearly 10,000 individuals relative to the estimate for the same zone 7 months earlier (Table 1). However, the mean encounter rate in the adjacent reconnaissance survey block to the north in September 2017 was four times higher than in the line transect zone, indicating a high likelihood that many individuals had moved 30–50 km north (Fig. 5). Large assemblies of dorcas gazelles were at that time attracted to extensive green pastures of *Boerhavia* sp., *I. colutea* and other green vegetation in the reconnaissance survey zone, while avoiding high

concentrations of livestock towards the east. Although dorcas gazelle distribution was independent of artificial water sources, the species uses natural water sources that form temporarily after rainfall. In a localized study zone of the Negev desert, dorcas gazelles were associated with permanent water points (Henley et al., 2007). But free-living dorcas gazelles in Africa frequently experience prolonged absence of water, and routinely so in the 9-month dry season in Chad. The absence of association between dorcas gazelles and the array of artificial water points infers that habitat quality in the Reserve is still sufficient to allow dorcas gazelles to meet their water requirements across the seasonal cycle without having to rely on artificial water sources.

Extensive coverage during the survey period confirmed that dama gazelles are present in low numbers in a relatively restricted area. Nevertheless, previous research indicates this is the largest of the four remaining wild populations (Scholte & Hashim, 2013b; Mungall, 2018; IUCN/SSC, 2019). Data collected over two seasons suggests dama gazelles avoid livestock in a similar way to dorcas gazelles, but may be even more sensitive to disturbance, commonly exhibiting much longer flight distances (often > 500 m; SCF, unpubl. data, 2020). Evidence suggests that anthropogenic influences such as livestock presence, fire and occasional hunting by

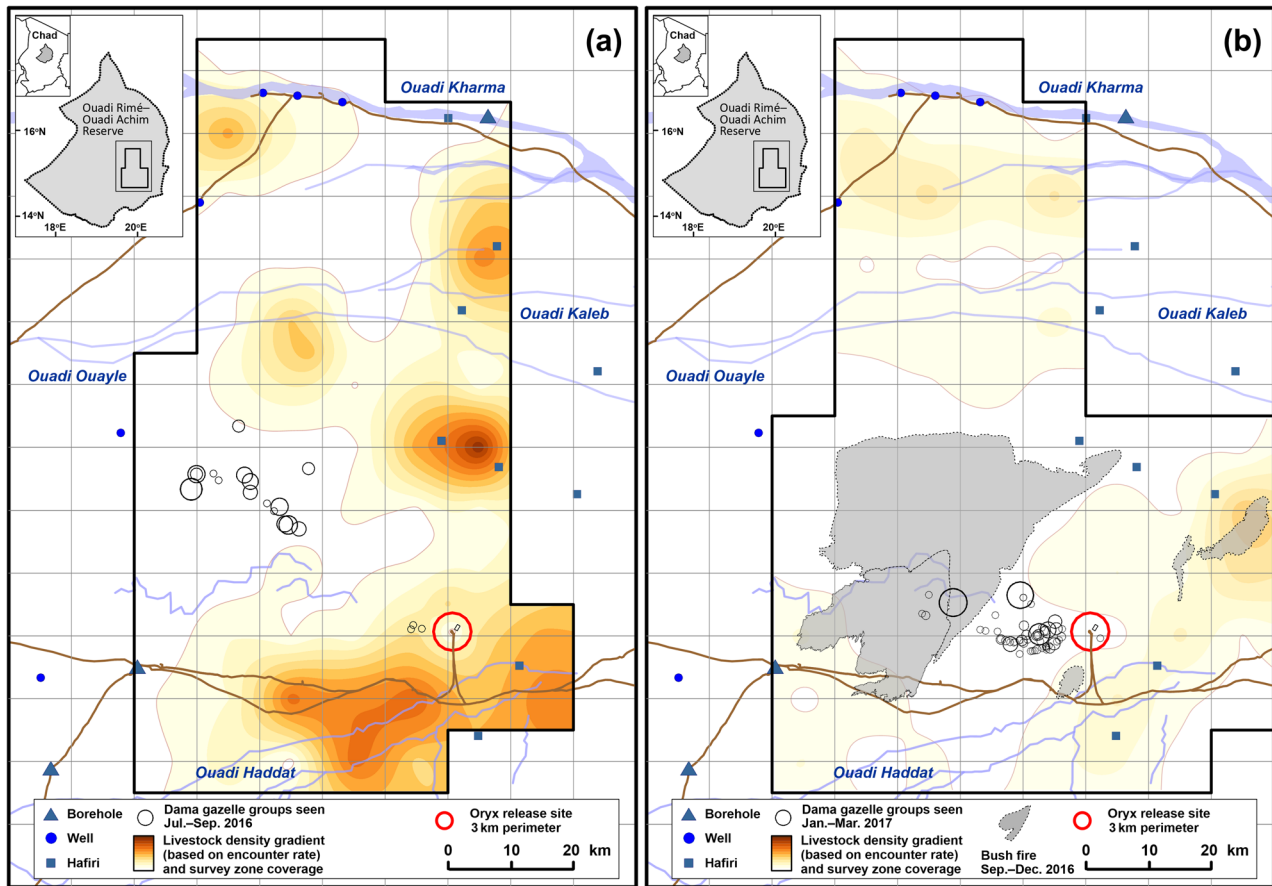


FIG. 7 Location of all dama gazelle *Nanger dama* sightings (circles proportional to group size; range 1–17 individuals) in relation to livestock distribution (a) during July–September 2016 (wet season) and (b) during January–March 2017 (dry season), showing reduced livestock encounter rates in the dry season, avoidance of livestock by dama gazelles in both seasons and avoidance of burnt ground by dama gazelles in the dry season.

motorbike affect the Critically Endangered dama gazelle more heavily than the dorcas gazelle, indicating that land-use planning and law enforcement will play a critical role in determining the viability of this small but globally important population.

Unexpectedly, our findings on the local impact of fires were inconclusive. The frequency and extent of grass fires, removing grazing biomass at the start of the long dry season, has become a major management concern for both conservation and pastoralism interests. We did not detect a significant effect of fire frequency at the scale of the 10×10 km grid cells on wild or domestic ungulates. However, a positive association between dorcas gazelles and fire detections at the scale of the entire study area over the previous 6 months requires further investigation to determine if this is consistent over time and whether it relates to effects of fire on habitat and food plant condition, or the relative reduction of livestock. Ground surveys of actual area burnt and food plant condition over time in burnt areas may provide more accurate data to assess fire impact.

Our observations of livestock confirm that the biomass of livestock far exceeds that of wild ungulates within the

Reserve in all seasons, with transhumant management creating strong seasonal variation. Negative spatial relationships between wild and domestic ungulates have been recorded in other situations (Foufopolos et al., 2002; Acebes et al., 2012; Gordon, 2018). We could not determine the causal mechanism for spatial separation between dorcas gazelles and livestock in this study, but disturbance and predation are likely factors. In the Reserve, predation probably affects ungulates in two ways, with jackals *Canis lupaster* and striped hyaenas *Hyaena hyaena* having an impact on livestock, and human activities and domestic dogs (associated with many nomad camps) affecting wild ungulates. Competition for resources, especially grazing and undisturbed space, is likely to be important, and disease dynamics may also play a role. High livestock densities support increased populations of biting arthropods that can act as disease vectors, and livestock concentrations at artificial water points facilitate disease transmission. Transhumance also contributes to the spread of diseases and their vectors, and limits opportunities for veterinary management (Apolloni et al., 2019).

Evidence that high livestock densities around water or other concentration points (piospheres) are causing

significant environmental harm is not always clear (Turner, 2000). In the Reserve, during the dry season the presence of a well can be perceived at distances of up to 5–10 km by progressive thinning of ground cover, increasing density of dry livestock dung, tracks and signs of trampling, and increased dust in the air. Contrary to this, previous research measuring primary production around well sites in the Ferlo of Senegal based on satellite data reported no loss of vegetation biomass around wells, which may be associated with persistence of unpalatable vegetation (Hanan et al., 1991; Rasmussen et al., 2018). Negative effects such as soil impaction and reduced water infiltration have been detected at higher livestock grazing densities (Hiernaux et al., 1999). Site-specific features such as soil type, vegetation community and particularly the effective livestock stocking rates and management patterns around focal points determine the impact of livestock grazing on the natural habitat. In the Ouadi Rimé–Ouadi Achim Reserve, our findings show that high stocking rates, associated with artificial water points, lead to spatial exclusion of wild ungulates.

This has implications for conservation planning. Assuming that despite the low precision, our estimates of livestock numbers are nevertheless broadly representative, the livestock numbers in the Reserve are typical for the region. The mean observed stocking rate across all surveys was 0.12 tropical livestock units/ha, with a maximum of 0.26 units/ha in some wet seasons (Table 1). This is comparable to rates of 0.15–0.20 units/ha reported from other (unprotected) areas of the Sahel (De Leeuw & Tothill, 1990; Miehe, 1997; Hein & Weikard, 2008). In the Reserve, the pastoralist economy has access to c. 95% of all ungulate biomass and associated primary productivity. Distribution of dorcas gazelle populations (and likely other wildlife) is limited by this anthropogenic disturbance and pressure on available resources. An agro-economic case study in the Sahelian Ferlo of Senegal estimated an optimal livestock stocking rate (to maximize profit margins) of 0.09 units/ha; slightly below the estimates for environmentally sustainable and actual observed stocking rates (Hein & Weikard, 2008; Weikard & Hein, 2011). The observed mean stocking rate in the Reserve (Table 1) exceeds this economically optimal stocking rate and is at or above the estimated ecologically sustainable maximum. Therefore, managing stocking rates not to exceed current levels, and ideally slightly reduce them, could be beneficial to the pastoralist economy as well as wildlife conservation.

Spacing and management of water points are critical to managing stocking rates. The waterpoints that most affect livestock distribution in the study area are *hafiris* (Fig. 1). It is likely that outside the study area, boreholes and wells have a similar influence in other parts of the Reserve, where these water sources are also critical for livestock.

Water resource development is a key issue in the Sahel, often associated with disruption of traditional well ownership

and creating social tensions (Cotula, 2006). In view of the observed livestock stocking rates in the Reserve, we believe that an effective conservation zone could be established by ensuring no further development of water resources or use of mobile bladder reservoirs takes place within a designated 8,000 km² core area (c. 10% of the Reserve), focused on the survey blocks in this study. The size of this core area is scaled to match ecological conditions for livestock and wildlife in a historically arid and drought-prone region, and considers the impact of climate change (Fremantle et al., 2013). Management within the conservation zone should aim to avoid further increase in livestock density and control fire, both of which would benefit pastoralist communities and support biodiversity conservation. Improved livestock management is also needed in the remaining 90% of the Reserve. The support and active involvement of local communities are vital for this stratified approach to succeed. To reduce potential opposition to what may be perceived as the creation of a large zone from which local people are excluded, the conservation plan should specify that livestock grazing may continue in the core zone, but no further water resource development or settlement should take place. The objectives of this management regime are to support biodiversity conservation and habitat sustainability, manage fire risk, improve veterinary care and promote the role of the conservation core zone as a grazing reserve supporting the much larger surrounding area.

To track the effect of future conservation and livestock management strategies, ongoing ground surveys with monitored law enforcement and modern aerial survey techniques (Lamprey et al., 2020) will be needed. Satellite tracking of dorcas gazelles could confirm the movement patterns and requirements of this species implied by our study. This would be particularly valuable if coordinated with formal study of livestock management practice and movements. Ongoing productivity and veterinary health assessments would confirm progress in the livestock sector.

Our finding that the Ouadi Rimé–Ouadi Achim Reserve holds globally important populations of the dorcas and dama gazelles, in addition to the ongoing reintroduction of oryx (Duthie, 2018; Mertes et al., 2019) addax and ostrich populations (Sahara Conservation Fund, 2019, 2020), highlight its unique value in supporting Sahelian biodiversity. This study provides evidence for management steps needed to achieve national conservation and development goals in a complex social environment and ecosystem. Our recommendations aim to ensure that at least 10% of the Reserve continues as a protected area of IUCN category IV (IUCN, 1994) or higher and is managed as such, with management strategy and actions distinct from a sustainable development area (Locke & Deardon, 2005).

Acknowledgements We thank the Government of Chad, its Ministry of Environment and Fisheries and the Direction de la

Faune et des Aires Protégées for close collaboration and support throughout our fieldwork; the Private Department of HH Sheikh Mohammed bin Zayed for funding the Pan-Sahara Wildlife Survey that supported the initial fieldwork; the Environment Agency Abu Dhabi for support and leadership in establishing the oryx reintroduction project; the Société de Voyages Sahariens for logistical support during the early surveys; the rangers and staff of the oryx project base-camp for their support; and the reviewers for their critiques.

Author contributions Survey design: TW, JN; survey observers: JN, KA, HA, SZB, FNB; data collection: TW, JN, KA, HA, MHH, SZB, FNB; data analysis: RA, TW; writing: TW, RA, JN.

Conflicts of interest None.

Ethical standards This research abided by the *Oryx* guidelines on ethical standards. All work was conducted with the permission and direct participation of the government authorities of Chad. Survey teams included local participants, ensuring effective communication with local people during informal encounters. No animals were handled during this study.

References

- ACEBES, P., TRABA, J. & MALO, J.E. (2012) Co-occurrence and potential competition between wild and domestic large herbivores in a South American desert. *Journal of Arid Environments*, **77**, 39–44.
- APOLLONI, A., CORNIAUX, C., COSTE, C., LANCELOT, R. & TOURÉ, I. (2019) Livestock mobility in West Africa and Sahel and transboundary animal diseases. In *Transboundary Animal Diseases in Sahelian Africa and Connected Regions* (eds M. Kardjadj, A. Diallo & R. Lancelot), pp. 31–52. Springer, Cham, Switzerland.
- BAAMRANE, M.A.A., ZNARI, M., LOGGERS, C., EL MECHT, S. & NAIMI, M. (2013) Demographic decline of the last surviving Moroccan dorcas gazelles *Gazella dorcas massaesyala* in M'Salih Talaa Reserve, Morocco. *Oryx*, **47**, 578–583.
- BAILEY, H. (2020) Sahara, Sahel & Ouadi. *Sandschrift*, **28**, 6–7.
- BÅRDSEN, B.-J. & FOX, J.L. (2006) Evaluation of line transect sampling for density estimates of chiru *Pantholops hodgsoni* in the Aru Basin, Tiber. *Wildlife Biology*, **12**, 89–100.
- BEMADJIM, N.E., NEWBY, J., DESBIEZ, A., LEES, C. & MILLER, P. (eds) (2012) *Technical Workshop on the Reintroduction of the Scimitar-Horned Oryx to the Ouadi Rimé-Ouadi Achim Game Reserve, Chad*. IUCN/SSC Conservation Breeding Specialist Group, Apple Valley, USA.
- BRUGIÈRE, D. & SCHOLTE, P. (2013) Biodiversity gap analysis of the protected area system in poorly-documented Chad. *Journal for Nature Conservation*, **21**, 286–293.
- BUCKLAND, S.T., ANDERSON, D.R., BURNHAM, K.P., LAAKE, J.L., BORCHERS, D.L. & THOMAS, L. (2001) *Introduction to Distance Sampling: Estimating Abundance of Biological Populations*. Oxford University Press, Oxford, UK.
- COTULA, L. (ed.) (2006) *Land and Water Rights in the Sahel. Tenure Challenges of Improving Access to Water for Agriculture*. Drylands Programme, Issue Paper no. 139. International Institute for Environment and Development, London, UK.
- CROME, F.H.J., THOMAS, M. & MOORE, L.A. (1996) A novel Bayesian approach to assessing impacts of rainforest logging. *Ecological Applications*, **6**, 1104–1123.
- CYBERTRACKER CONSERVATION (2019) cybertracker.org [accessed January 2022].
- DE LEEUW, P.N. & TOTHILL, J.C. (1990) *The Concept of Rangeland Carrying Capacity in Sub-Saharan Africa – Myth or Reality*. Research report. Overseas Development Institute, London, UK.
- DUTHIE, J. (ed.) (2018) *Back to the Wild. Reintroducing the Scimitar-Horned Oryx into Chad*. Akkadia Press, Edinburgh, UK.
- ESDS (EARTH SCIENCE DATA SYSTEM) (2020) *Fire Information for Resource Management*. National Aeronautics and Space Administration (NASA), Washington, DC, USA. earthdata.nasa.gov/firms [accessed 11 November 2020].
- FAO (2011) *Guidelines for the Preparation of Livestock Sector Reviews*. Animal Production and Health Guidelines No. 5. Food and Agriculture Organisation of the United Nations, Rome, Italy.
- FOUFOPOULOS, J., ALTIZER, S. & DOBSON, A.P. (2002) Interactions between wildlife and domestic livestock in the tropics. In *Tropical Agroecosystems* (ed. J.H. Vandermeer), pp. 219–244. CRC Press, Boca Raton, USA.
- FREMANTLE, T.P., WACHER, T., NEWBY, J. & PETTORELLI, N. (2013) Earth observation: overlooked potential for support to species re-introduction programmes. *African Journal of Ecology*, **51**, 482–492.
- GILLET, H. (1961) *Études des Paturages du Ranch de l'Ouadi Rimé*. Centre de Recherches Tchadiennes. Office de la Recherche Scientifique et Technique Outre-mer. Muséum National d'Histoire Naturelle. Plan-programme 1960–19601. Convention Service de l'Élevage. Ministère de l'Élevage et des Industries Animales, N'Djamena, Chad.
- GORDON, I.J. (2018) Review: Livestock production increasingly influences wildlife across the globe. *Animal*, **12**, Supplement 2, s372–s382.
- HANAN, N.P., PREVOST, Y., DIOUF, A. & DIALLO, O. (1991) Assessment of desertification around deep wells in the Sahel using satellite imagery. *Journal of Applied Ecology*, **28**, 173–186.
- HEIN, L. & WEIKARD, H.-P. (2008) Optimal long-term stocking rates for livestock grazing in the Sahelian rangeland. *African Journal of Agricultural and Resource Economics*, **2**, 126–150.
- HENLEY, S.R., WARD, D. & SCHMIDT, I. (2007) Habitat selection by two desert-adapted ungulates. *Journal of Arid Environments*, **70**, 39–48.
- HIERNAUX, P., BIELDERS, C.L., VALENTIN, C., BATIONO, A. & FERNÁNDEZ-RIVERA, S. (1999) Effects of livestock grazing on physical and chemical properties of sandy soils in Sahelian rangelands. *Journal of Arid Environments*, **41**, 231–245.
- IUCN (1994) *Guidelines for Protected Area Management Categories*. IUCN, Gland, Switzerland.
- IUCN/SSC ANTELOPE SPECIALIST GROUP (2016a) *Addax nasomaculatus*. In *The IUCN Red List of Threatened Species 2016*. dx.doi.org/10.2305/IUCN.UK.2016-2.RLTS.T512A50180603.en.
- IUCN/SSC ANTELOPE SPECIALIST GROUP (2016b) *Nanger dama*. In *The IUCN Red List of Threatened Species 2016*. dx.doi.org/10.2305/IUCN.UK.2016-2.RLTS.T8968A50186128.en.
- IUCN/SSC ANTELOPE SPECIALIST GROUP (2016c) *Oryx dammah*. In *The IUCN Red List of Threatened Species 2016*. dx.doi.org/10.2305/IUCN.UK.2016-2.RLTS.T15568A50191470.en.
- IUCN/SSC ANTELOPE SPECIALIST GROUP (2017) *Gazella dorcas*. In *The IUCN Red List of Threatened Species 2017*. dx.doi.org/10.2305/IUCN.UK.2017-2.RLTS.T8969A50186334.en.
- IUCN/SSC ANTELOPE SPECIALIST GROUP (2019) *Dama gazelle (Nanger dama) Conservation Strategy 2019–2028*. Al Ain Zoo, Abu Dhabi, United Arab Emirates, and Royal Zoological Society of Scotland, Edinburgh, UK.
- LAFONTAINE, R.-M., BEUDELS-JAMAR, R.C., DEVILLERS, P. & WACHER, T. (2006) *Gazella dorcas*. In *Sahelo-Saharan Antelopes. Status and Perspectives. Report on the Conservation Status of the Six Sahelo-Saharan Antelopes* (eds R.C. Beudels, P. Devillers, R.-M. Lafontaine, J. Devillers-Terschuren & M.-O. Beudels), pp. 93–128.

- CMS Technical Series Publication No. 11. UNEP/CMS Secretariat, Bonn, Germany.
- LAMPREY, R., POPE, F., NGENE, S., NORTON-GRIFFITHS, M., FREDERICK, H., OKITA-OUA, B. & DOUGLAS-HAMILTON, I. (2020) Comparing an automated high-definition oblique camera system to rear-seat-observers in a wildlife survey in Tsavo, Kenya: taking multi-species aerial counts to the next level. *Biological Conservation*, 241, 108243.
- LE HOUEIROU, H.N. & HOSTE, C.H. (1977) Rangeland production and annual rainfall relations in the Mediterranean basin and in the African Sahelo–Sudanian zone. *Journal of Range Management*, 30, 181–189.
- LE MOULLEC, M., PEDERSEN, Å.Ø., YOCOZO, N.G., AANES, R., TUFTO, J. & HANSEN, B.B. (2017) Ungulate population monitoring in an open tundra landscape: distance sampling verses total counts. *Wildlife Biology*, 2017, 00299.
- LOCKE, H. & DEARDEN, P. (2005) Rethinking protected area categories and the new paradigm. *Environmental Conservation*, 32, 1–10.
- MERTES, K., STABACH, J.A., SONGER, M., WACHER, T., NEWBY, J., CHUVEN, J., AL DHAHERI, S., LEIMGRUBER, P. & MONFORT, S. (2019) Management background and release conditions structure post-release movements in reintroduced ungulates. *Frontiers in Ecology and Evolution*, 7, 470.
- MIEHE, S. (1997) *Inventaire et Suivi de la Végétation dans la Périphérie Expérimentale à Widou-Thiengoly dans le Cadre du Projet Sénégal-Allemand d'Autopromotion Pastorale dans le Ferlo (PAPF)*. Rapport 1997. Deutsche Gesellschaft für Technische Zusammenarbeit, Eschborn, Germany.
- MUNGALL, E.C. (2018) *The Dama Gazelles: Last Members of a Critically Endangered Species*. A & M University Press, College Station, USA.
- NEWBY, J.E. (1978) Scimitar-horned oryx—the end of the line? *Oryx*, 14, 219–221.
- NEWBY, J.E. (1980) Can addax and oryx be saved in the Sahel? *Oryx*, 15, 262–266.
- NEWBY, J.E. (1988) African wildlife in decline: the case of the scimitar-horned oryx. In *Conservation and Biology of Desert Antelopes* (eds A. Dixon & D. Jones), pp. 146–166. Christopher Helm, London, UK.
- NEWBY, J.E. (2014) Home, home on the range. . . *Oryx*, 48, 157–158.
- PROTECTED PLANET (2020) *Ouadi Rimé-Ouadi Achim*. protectedplanet.net/1250 [accessed 15 June 2021].
- QGIS (2020) *QGIS Geographic Information System*. qgis.org [accessed January 2022].
- R CORE TEAM (2019) *R: A Language and Environment for Statistical Computing*. Foundation for Statistical Computing, Vienna, Austria.
- RASMUSSEN, K., BRANDT, M., TONG, X., HIERNAX, P., DIOUF, A.A., ASSOUMA, H.H. et al. (2018) Does grazing cause land degradation? Evidence from the sandy Ferlo in northern Senegal. *Land Degradation & Development*, 29, 4337–4347.
- SAHARA CONSERVATION FUND (2019) *Chad Oryx Reintroduction Project 2018 Annual Report*. Sahara Conservation Fund, Paris, France.
- SAHARA CONSERVATION FUND (2020) *Chad Oryx Reintroduction Project 2019 Annual Report*. Sahara Conservation Fund, Paris, France.
- SAKAMOTO, Y., ISHIGURO, M. & KITAGAWA, G. (1986) *Akaike Information Criterion Statistics*. D. Reidel Publishing Company, Dordrecht, The Netherlands.
- SCHOLTE, P. & HASHIM, I.M. (2013a) *Gazella dorcas* Dorcas gazelle. In *Mammals of Africa. Volume VI: Pigs, Hippopotamuses, Chevrotain, Giraffes, Deer and Bovids* (eds J. Kingdon & M. Hoffman), pp. 340–345. Bloomsbury Publishing, London, UK.
- SCHOLTE, P. & HASHIM, I.M. (2013b) *Nanger dama* Dama gazelle. In *Mammals of Africa. Volume VI: Pigs, Hippopotamuses, Chevrotain, Giraffes, Deer and Bovids* (eds J. Kingdon & M. Hoffman), pp. 340–345. Bloomsbury Publishing, London, UK.
- STRINDBERG, S., BUCKLAND, S.T. & THOMAS, L. (2010) Design of distance sampling surveys and geographic information systems. In *Advanced Distance Sampling: Estimating Abundance of Biological Populations* (eds S.T. Buckland, D.R. Anderson, K.P. Burnham, J.L. Laake, D.L. Borchers & L. Thomas), pp. 190–228. Oxford University Press, Oxford, UK.
- TURNER, M. (2000) Misunderstandings of Sahelian land-use ecology. In *Symposium: Environment: Reality and Myth*. Volume 486. Seminar Publications, New Delhi, India. india-seminar.com/2000/486/486%20turner.htm [accessed 19 January 2021].
- WEIKARD, H.-P. & HEIN, L. (2011) Efficient versus sustainable livestock grazing in the Sahel. *Journal of Agricultural Economics*, 62, 153–171.
- WORLD BANK GROUP (2020) *Chad – Albiä. Local Development and Adaptation Project (English)*. World Bank Group, Washington, DC, USA. documents.worldbank.org/curated/en/775471591296437135/Chad-Albiä-Local-Development-and-Adaptation-Project [accessed February 2022].
- YOM-TOV, Y., MENDELSSOHN, H. & GROVES, C.P. (1995) *Gazella dorcas*. *Mammalian Species*, 491, 1–6.
- YOUNG, J.K., MURRAY, K.M., STRINDBERG, S., BUUVEIBAATAR, B. & BERGER, J. (2010) Population estimates of Endangered Mongolian saiga *Saiga tartarica mongolica*: implications for effective monitoring and recovery. *Oryx*, 44, 285–292.