



Article

New arsenate minerals from the Arsenatnaya fumarole, Tolbachik volcano, Kamchatka, Russia. IX. Arsenatotitanite, NaTiO(AsO₄)

Igor V. Pekov^{1*}, Natalia V. Zubkova¹, Atali A. Agakhanov², Dmitry I. Belakovskiy², Marina F. Vigasina¹,
Vasiliy O. Yapaskurt¹, Evgeny G. Sidorov³, Sergey N. Britvin⁴ and Dmitry Y. Pushcharovsky¹

¹Faculty of Geology, Moscow State University, Vorobiev Gory, 119991 Moscow, Russia; ²Fersman Mineralogical Museum of the Russian Academy of Sciences, Leninsky Prospekt 18-2, 119071 Moscow, Russia; ³Institute of Volcanology and Seismology, Far Eastern Branch of the Russian Academy of Sciences, Piip Boulevard 9, 683006 Petropavlovsk-Kamchatsky, Russia; and ⁴Department of Crystallography, St Petersburg State University, University Embankment 7/9, 199034 St Petersburg, Russia

Abstract

The new durangite-group mineral arsenatotitanite, ideally NaTiO(AsO₄), was found in the Arsenatnaya fumarole at the Second scoria cone of the Northern Breakthrough of the Great Tolbachik Fissure Eruption, Tolbachik volcano, Kamchatka, Russia. It is associated with orthoclase, tenorite, hematite, johillerite, bradaczekite, badalovite, calciojohillerite, arsmirandite, tilasite, svabite, cassiterite, pseudobrookite, rutile, sylvite, halite, apththitalite, langbeinite and anhydrite. Arsenatotitanite occurs as prismatic, tabular, lamellar or acicular crystals up to 0.3 mm × 0.8 mm × 2 mm. They are separated or combined in open-work aggregates up to 2 mm across or interrupted crusts up to 2 mm × 5 mm in area and up to 0.3 mm thick. Arsenatotitanite is transparent, brownish red to pale pinkish-reddish or almost colourless, with vitreous lustre. It is brittle and the Mohs' hardness is ~5½. Cleavage is perfect on {110} and the fracture is stepped. D_{calc} is 3.950 g cm⁻³. Arsenatotitanite is optically biaxial (+), $\alpha = 1.825(5)$, $\beta = 1.847(6)$, $\gamma = 1.896(6)$ (589 nm) and $2V_{\text{meas.}} = 70(5)^\circ$. Chemical composition (wt.%, electron-microprobe) is: Na₂O 12.26, CaO 3.10, Al₂O₃ 4.39, Fe₂O₃ 9.57, TiO₂ 17.11, SnO₂ 1.03, As₂O₅ 50.17, F 3.29, O = F -2.39, total 99.53. The empirical formula based on 5 (O + F) apfu is (Na_{0.91}Ca_{0.13}) $\Sigma_{1.04}$ (Ti_{0.49}Fe_{0.27}Al_{0.20}Sn_{0.02}) $\Sigma_{0.98}$ (As_{1.00}O_{4.00}) (O_{0.60}F_{0.40}). Arsenatotitanite is monoclinic, C2/c, $a = 6.6979(3)$, $b = 8.7630(3)$, $c = 7.1976(3)$ Å, $\beta = 114.805(5)^\circ$, $V = 383.48(3)$ Å³ and $Z = 4$. The strongest reflections of the powder X-ray diffraction (XRD) pattern [$d, \Delta(I)(hkl)$] are: 4.845(89)($\bar{1}11$), 3.631(36)(021), 3.431(48)(111), 3.300(100)($\bar{1}12$), 3.036(100)(200), 2.627(91)(130) and 2.615(57)(022). The crystal structure was solved from single-crystal XRD data with $R = 1.76\%$. Arsenatotitanite belongs to the titanite/durangite structure type. It is named as an *arsenate* of sodium (*natrium* in Latin) and *titanium* isostructural with *titanite*.

Keywords: arsenatotitanite, new mineral, sodium titanium arsenate, durangite group, titanite group, crystal structure, fumarole sublimate, Tolbachik volcano, Kamchatka

(Received 30 April 2018; accepted 7 June 2018; Accepted Manuscript online: 4 July 2018; Associate Editor: Juraj Majzlan)

Introduction

This paper continues a series of articles on new arsenate minerals from the Arsenatnaya fumarole located at the apical part of the Second scoria cone of the Northern Breakthrough of the Great Tolbachik Fissure Eruption, Tolbachik volcano, Kamchatka Peninsula, Far-Eastern Region, Russia (55°41'N, 160°14'E, 1200 m asl). This active fumarole, discovered by us in July 2012, has already given rise to the new arsenates: yurmarinite Na₇(Fe³⁺, Mg,Cu)₄(AsO₄)₆ (Pekov *et al.*, 2014a); two polymorphs of Cu₄O(AsO₄)₂, ericlxmanite and kozyrevskite (Pekov *et al.*, 2014b); popovite Cu₅O₂(AsO₄)₂ (Pekov *et al.*, 2015a); structurally related shchurovskiyite K₂CaCu₆O₂(AsO₄)₄ and dmisokolovite K₃Cu₅AlO₂(AsO₄)₄ (Pekov *et al.*, 2015b); katiarsite KTiO(AsO₄)

(Pekov *et al.*, 2016a); melanarsite K₃Cu₇Fe³⁺O₄(AsO₄)₄ (Pekov *et al.*, 2016b); pharmazincite KZnAsO₄ (Pekov *et al.*, 2017); and arsenowagnerite Mg₂(AsO₄)F (Pekov *et al.*, 2018a). The general description of this fumarole and data on the distribution of arsenate mineralisation within it are given by Pekov *et al.* (2014a, 2018b).

The present paper is devoted to the new mineral arsenatotitanite, ideally NaTiO(AsO₄) (Cyrillic: арсенатротитаниит). It is named as an *arsenate* of sodium (*natrium* in Latin) and *titanium* isostructural with *titanite*. Both the new mineral and its name have been approved by the International Mineralogical Association Commission on New Minerals, Nomenclature and Classification (IMA2016–015). The type specimen is deposited in the systematic collection of the Fersman Mineralogical Museum of the Russian Academy of Sciences, Moscow, with the catalogue number 95614.

*Author for correspondence: Igor Pekov, Email: igorpekov@mail.ru

Cite this article: Pekov I.V., Zubkova N.V., Agakhanov A.A., Belakovskiy D.I., Vigasina M.F., Yapaskurt V.O., Sidorov E.G., Britvin S.N. and Pushcharovsky D.Y. (2019) New arsenate minerals from the Arsenatnaya fumarole, Tolbachik volcano, Kamchatka, Russia. IX. Arsenatotitanite, NaTiO(AsO₄). *Mineralogical Magazine* 83, 453–458. <https://doi.org/10.1180/mgm.2018.134>

Occurrence and general appearance

Specimens with the new mineral were collected by us in July 2015 from two pockets in the northern area of the Arsenatnaya

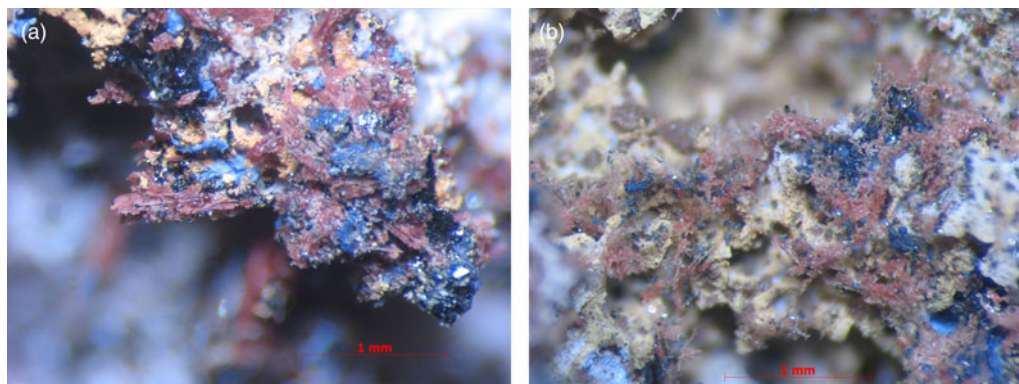


Fig. 1. Brownish red to pale pinkish-reddish crystals and their aggregates of arsenatrotitanite with blue johillerite, black tenorite and yellowish fine-grained cassiterite (the latter is visible in (a) on white to pale beige crusts of As-bearing orthoclase). Field of view width is 3.5 mm for both images. Photo: I.V. Pekov & A.V. Kasatkin.

fumarole, at the depth of 1–1.5 m under day surface. Temperatures measured using a chromel–alumel thermocouple at the time of collecting in these pockets were 400–420°C. Arsenatrotitanite was deposited directly from the gas phase as a volcanic sublimate or, more likely, formed as a result of the interaction between fumarolic gas and basalt scoria at temperatures not lower than 420–450°C. The basalt scoria seems the most probable source of Ti which has low volatility in volcanic gases, as both thermodynamic calculations (Churakov *et al.*, 2000) and direct measurements carried out for gases present at Tolbachik (Zelenski *et al.*, 2014) show.

Arsenatrotitanite is a minor component of fumarolic encrustations mainly consisting of arsenates, sulfates, oxides, chlorides and silicates. The new mineral is associated closely with orthoclase (As-bearing variety), tenorite, hematite, johillerite, bradaczekite, badalovite (IMA2016–053), calciojohillerite (IMA2016–068), arsmirandite (IMA2014–081), tilasite, svabite, cassiterite, pseudobrookite, rutile, sylvite, halite, apthitalite, langbeinite and anhydrite.

Arsenatrotitanite occurs as prismatic, tabular or lamellar crystals up to 0.3 mm × 0.8 mm × 2 mm, typically coarse (Fig. 1a) and sometimes divergent. They are separate, or combined in open-work aggregates, or interrupted crusts up to 2 mm × 5 mm in area and up to 0.3 mm thick. Crude acicular crystals up to 0.7 mm long form chaotic open-work aggregates up to 2 mm across in cavities (Fig. 1b). Well-shaped crystals are small, usually not bigger than 0.01 mm, rarely up to 0.05 mm. They are flattened, wedge-shaped, more rarely multifaceted (Figs 2a–c), sometimes skeletal (Fig. 2c). Dendrite-like aggregates are common (Figs 2a and 2d). Arsenatrotitanite overgrows, in close association with johillerite, bradaczekite, tenorite, cassiterite and hematite, incrustations mainly consisting of As-bearing orthoclase that cover basalt scoria altered by fumarolic gas.

Physical properties and optical data

Arsenatrotitanite is transparent, brownish red to pale pinkish-reddish with brown hue or, in the thinnest needles, almost colourless. Its streak is white and its lustre is vitreous. The mineral is brittle. Cleavage is perfect on {110}, the fracture is stepped (observed under the microscope). The Mohs' hardness is *ca* 5½. Density could not be measured because of the small size of crystals without caverns and the open-work character of aggregates

(Fig. 2). Density calculated using its empirical formula is 3.950 g cm⁻³.

Arsenatrotitanite is optically biaxial (+) with $\alpha = 1.825(5)$, $\beta = 1.847(6)$, $\gamma = 1.896(6)$ (589 nm), $2V_{\text{meas}} = 70(5)^\circ$ and $2V_{\text{calc}} = 69^\circ$. Other optical data are: dispersion of optical axes is strong, $r > v$; optical orientation: $Y = b$; pleochroism is strong: Z (bright pink to, in thicker grains, carmine red) $> Y$ (very pale pinkish to almost colourless) $\geq X$ (colourless).

Raman spectroscopy

The Raman spectrum of arsenatrotitanite (Fig. 3) was obtained on a randomly oriented crystal using an EnSpectr R532 instrument (Department of Mineralogy, Moscow State University) with a green laser (532 nm) at room temperature. The output power of the laser beam was ~16 mW. The spectrum was processed using the *EnSpectr* expert mode program in the range from 100 to 4000 cm⁻¹ with the use of a holographic diffraction grating with 1800 lines cm⁻¹ and a resolution of 6 cm⁻¹. The diameter of the focal spot on the sample was ~10 µm. The back-scattered Raman signal was collected with 40x objective; signal acquisition time for a single scan of the spectral range was 1500 ms and the signal was averaged over 10 scans.

The most intense bands with maxima at 878 and 801 cm⁻¹ correspond to As⁵⁺–O stretching vibrations of AsO₄³⁻ anions. Bands with frequencies lower than 700 cm⁻¹ correspond to bending vibrations of AsO₄ tetrahedra, Ti⁴⁺–O, Fe³⁺–O and Al–O stretching vibrations and lattice modes. The absence of bands with frequencies higher than 950 cm⁻¹ indicates the absence of groups with O–H, C–H, C–O, N–H, N–O and B–O bonds in the mineral.

Chemical composition

The chemical composition of arsenatrotitanite was determined on a Jeol JSM-6480LV scanning electron microscope equipped with an INCA-Wave 500 wavelength-dispersive spectrometer (Laboratory of Analytical Techniques of High Spatial Resolution, Department of Petrology, Moscow State University), with an acceleration voltage of 20 kV, a beam current of 20 nA, and a 3 µm beam diameter. The following standards were used: albite (Na), wollastonite (Ca), Al₂O₃ (Al), magnetite (Fe), ilmenite (Ti), SnO₂ (Sn), InAs (As) and fluorophlogopite (F).

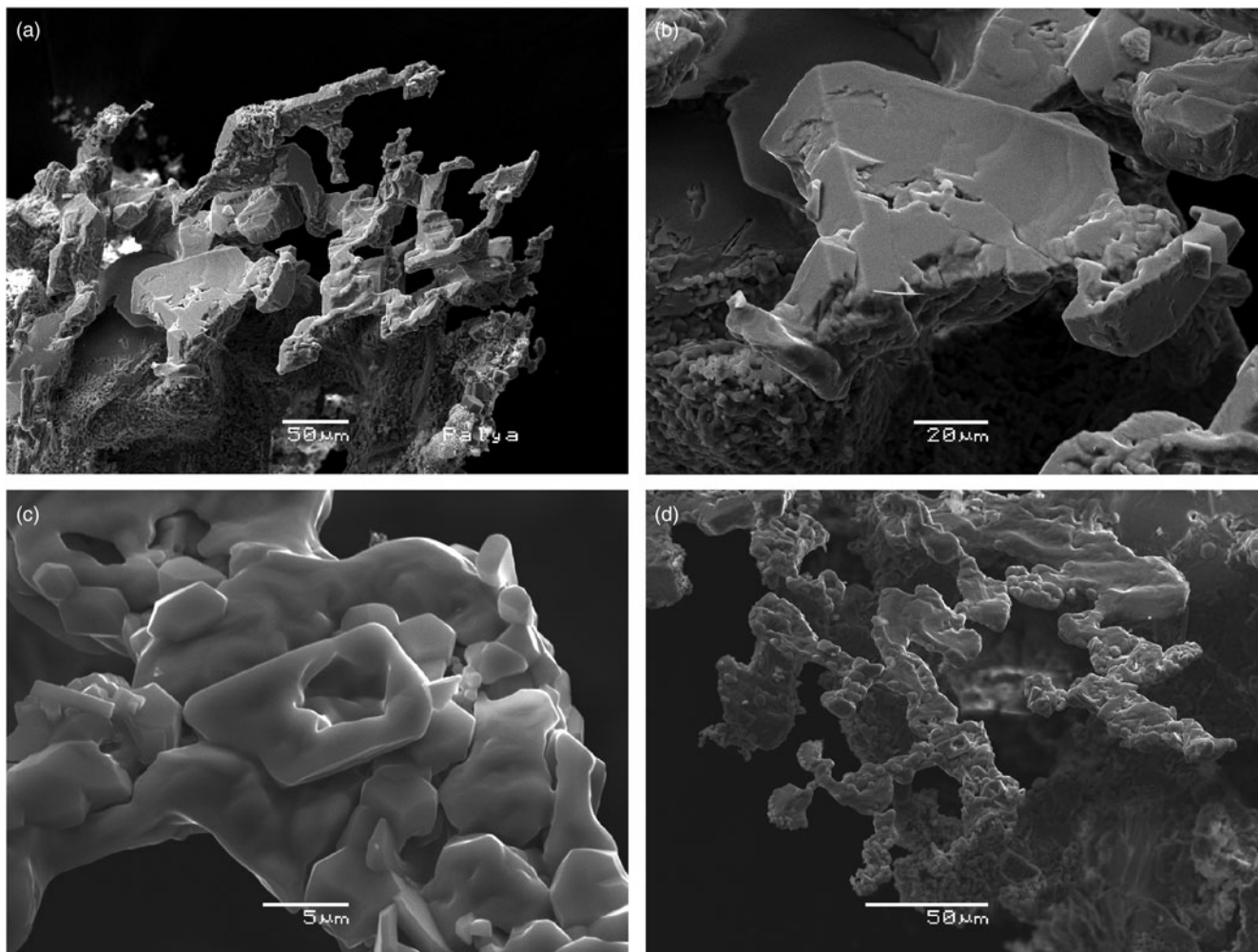


Fig. 2. Crystals and aggregates of arsenatrotitanite. Secondary electron images from scanning electron microscopy.

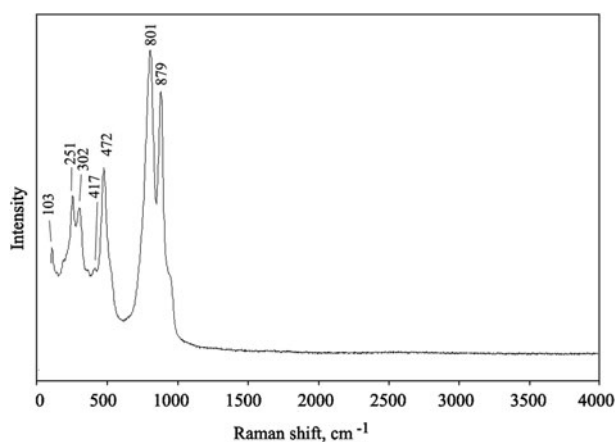


Fig. 3. The Raman spectrum of arsenatrotitanite.

The chemical composition of arsenatrotitanite (average of 6 spot analyses; wt.%, ranges are in parentheses / standard deviation) is: Na₂O 12.26 (11.95–12.84 / 0.30), CaO 3.10 (2.97–3.29 / 0.11), Al₂O₃ 4.39 (3.97–4.55 / 0.22), Fe₂O₃ 9.57 (9.06–10.11 / 0.44), TiO₂ 17.11 (16.81–17.29 / 0.26), SnO₂ 1.03 (0.91–1.30 / 0.15),

As₂O₅ 50.17 (49.48–51.14 / 0.71), F 3.29 (3.21–3.41 / 0.09), O = F –2.39, total 99.53. Contents of other elements with atomic numbers higher than carbon are below detection limits. Fe is calculated as Fe³⁺ taking into account strongly oxidising conditions of mineral formation in the Arsenatnaya fumarole: only minerals of trivalent iron are found there (Pekov *et al.*, 2014a, 2018b).

The empirical formula calculated on the basis of 5 (O + F) atoms per formula unit is Na_{0.91}Ca_{0.13}Al_{0.20}Fe_{0.27}³⁺Ti_{0.49}Sn_{0.02}As_{1.00}O_{4.60}F_{0.40} or, after grouping of constituents by structure positions: (Na_{0.91}Ca_{0.13})_{Σ1.04}(Ti_{0.49}Fe_{0.27}³⁺Al_{0.20}Sn_{0.02})_{Σ0.98}(As_{1.00}O_{4.00})(O_{0.60}F_{0.40}). The simplified, end-member formula is NaTi(AsO₄)O, which requires Na₂O 13.72, TiO₂ 35.38, As₂O₅ 50.90, total 100.00 wt%.

X-ray crystallography and crystal structure

Powder XRD data of arsenatrotitanite (Table 1) were collected with a Rigaku R-Axis Rapid II single-crystal diffractometer equipped with a cylindrical image plate detector (radius 127.4 mm) using Debye-Scherrer geometry, CoK α radiation (rotating anode with VariMAX microfoc optics), 40 kV, 15 mA and exposure 15 min. Angular resolution of the detector is 0.045 2 θ (pixel size 0.1 mm). The data were integrated using the software package *Osc2Tab* (Britvin *et al.*, 2017). The parameters of the monoclinic

Table 1. Powder XRD data (d in Å) of arsenatrotitanite.

l_{obs}	l_{calc}^*	d_{obs}	d_{calc}^{**}	$h k l$
12	7	4.981	4.995	1 1 0
89	85	4.845	4.858	1 1 1
2	2	4.371	4.382	0 2 0
36	35	3.631	3.639	0 2 1
48	47	3.431	3.438	1 1 1
100	100	3.300	3.305	1 1 2
19	16	3.262	3.267	0 0 2
100	97	3.036	3.040	2 0 0
23	22	2.914	2.918	$\bar{2}$ 0 2
25	24	2.655	2.659	$\bar{2}$ 2 1
91	92	2.627	2.633	1 3 0
57	64	2.615	2.619	0 2 2
7	6	2.494	2.498	2 2 0
10	11	2.427	2.429	$\bar{2}$ 2 2
5	6	2.381	2.383	1 1 2
23	26	2.299	2.301	1 3 1
12	17	2.258	2.260	$\bar{1}$ 3 2
3	2	2.189	2.191	4 0
16	20	2.114	2.115	$\bar{3}$ 1 2
12	16	2.022	2.023	$\bar{2}$ 2 3
4	4	1.973	1.975	3 1 0
2	4	1.949	1.950	2 3
4	5	1.898	1.899	$\bar{3}$ 1 3
6	7	1.888	1.889	1 3 2
7	10	1.867	1.869	2 0 2
3	4	1.832	1.833	$\bar{2}$ 4 1
5	8	1.819	1.819	0 4 2
16	20	1.784	1.784	$\bar{2}$ 0 4
2	3	1.765	1.766	$\bar{3}$ 3 1
10	11, 10	1.748	1.752, 1.747	$\bar{2}$ 4 2, $\bar{3}$ 3 2
17	27	1.718	1.719	2 2 2
4	4	1.706	1.707	3 1 1
24	40	1.664	1.665	3 3 0
5	9	1.633	1.633	0 0 4
2	3	1.617	1.617	2 4 1
2	2, 2	1.586	1.587, 1.580	1 5 1, $\bar{2}$ 4 3
11	26	1.572	1.573	$\bar{1}$ 5 2
7	14	1.562	1.562	4 2 2
5	2, 9	1.544	1.546, 1.545	1 3 3, 0 4 3
1	2	1.536	1.536	4 2 1
17	11, 30	1.518	1.520, 1.517	4 0 0, $\bar{1}$ 3 4
1	2	1.494	1.495	3 3 1
12	5, 20	1.460	1.461, 1.459	0 6 0, $\bar{4}$ 0 4
6	8	1.448	1.448	3 1 2
8	15	1.441	1.440	$\bar{3}$ 3 4
9	17	1.430	1.431	1 5 2
3	2, 3	1.418	1.422, 1.417	2 4 2, 2 2 3
2	2	1.387	1.387	$\bar{1}$ 1 5
4	5	1.380	1.380	$\bar{3}$ 1 5
7	21	1.366	1.366	$\bar{3}$ 5 2
2	4	1.337	1.338	$\bar{2}$ 6 1
2	2, 3	1.331	1.333, 1.329	0 6 2, $\bar{4}$ 4 2
3	4	1.326	1.326	3 5 0
3	2	1.323	1.322	5 1 2
7	14, 6	1.315	1.316, 1.313	2 6 0, $\bar{4}$ 4 1
2	4	1.299	1.299	4 2 1
5	17	1.288	1.287	1 3 4
1	4	1.253	1.252	0 2 5
2	4	1.248	1.247	$\bar{1}$ 5 4
4	3, 10	1.239	1.242, 1.238	$\bar{4}$ 2 5, 2 0 4

*For the calculated pattern, only reflections with intensities ≥ 1 are given; **for the unit-cell parameters calculated from single-crystal data. The strongest lines are given in bold.

unit cell calculated from the powder data are: $a = 6.699(3)$, $b = 8.756(2)$, $c = 7.203(3)$ Å, $\beta = 114.81(3)^\circ$ and $V = 383.5(3)$ Å³.

Single-crystal X-ray studies of arsenatrotitanite were carried out using an Xcalibur S diffractometer equipped with a CCD

Table 2. Crystal data, data collection information and structure refinement details for arsenatrotitanite.

Crystal data	
Formula	(Na _{0.9} Ca _{0.1})(Ti _{0.5} Fe _{0.3} Al _{0.2})(O _{0.6} F _{0.4})AsO ₄
Crystal dimensions (mm)	0.06 × 0.10 × 0.14
Crystal system, space group, Z	Monoclinic, C2/c, 4
Temperature (K)	293(2)
α , b , c (Å)	6.6979(3), 8.7630(3), 7.1976(3)
β (°)	114.805(5)
V (Å ³)	383.48(3)
Absorption coefficient μ (mm ⁻¹)	11.105
Formula weight	226.92
Data collection	
Diffractometer	Xcalibur S CCD
Radiation, wavelength (Å)	MoK α , 0.71073
F_{000}	427
θ range for data collection (°)	4.08–30.51
No. of measured, independent and observed [$I > 2\sigma(I)$] reflections	3420, 591, 583
R_{int}	0.0332
Index ranges for h , k , l	$-9 \leq h \leq 9$, $-12 \leq k \leq 12$, $-10 \leq l \leq 10$
Refinement	
Data reduction	CrysAlisPro, version 1.171.37.35 (Agilent Technologies, 2014)
Absorption correction	Gaussian [Numerical absorption correction based on Gaussian integration over a multifaceted crystal model]
Structure solution	Direct methods
Refinement method	Full-matrix least-squares on F^2
Number of refined parameters	43
Final R indices [$I > 2\sigma(I)$]	$R_1 = 0.0176$, $wR_2 = 0.0450$
R indices (all data)	$R_1 = 0.0180$, $wR_2 = 0.0452$
GoF	1.142
$\Delta\rho_{\text{max}}$, $\Delta\rho_{\text{min}}$, (e ⁻ /Å ³)	0.70 and -0.59

detector. The crystal structure was solved by direct methods and refined with the use of the *SHELX-97* software package (Sheldrick, 2008) to $R = 0.0176$. The refined numbers of electrons (e_{ref}) for A (Na scattering curve), M (Ti scattering curve) and (O,F) (O scattering curve) sites were obtained using low-angle reflections and gave the following values: 11.66, 22.22 and 8.88, respectively. The cation distribution [$A = \text{Na}_{0.9}\text{Ca}_{0.1}$ ($e_{\text{calc}} = 11.90$), $M = \text{Ti}_{0.5}\text{Fe}_{0.3}\text{Al}_{0.2}$ ($e_{\text{calc}} = 21.40$) and (O,F) = $\text{O}_{0.6}\text{F}_{0.4}$ ($e_{\text{calc}} = 8.40$)] was performed in accordance with both refined numbers of electrons and chemical data. We should note that e_{calc} for the M site could be increased due to the Sn admixture, which was not involved in the refinement because of its minor amount. The unit-cell dimensions and the experimental details are presented in Table 2, atom coordinates and displacement parameters in Table 3, selected interatomic distances in Table 4 and bond-valence calculations in Table 5. The crystallographic information files have been deposited with the Principal Editor of *Mineralogical Magazine* and are available as Supplementary material (see below).

Arsenatrotitanite is a representative of the well-known titanite structure type. The crystal structure of the new mineral (Fig. 4) contains infinite chains of the $\text{MO}_4(\text{O,F})_2$ ($M = \text{Ti, Fe or Al}$) octahedra running along the c axis and connected with each other via common vertices. Adjacent chains are linked by isolated AsO_4 tetrahedra forming a heteropolyhedral framework with cavities occupied by the A cations ($A = \text{Na and Ca}$) in seven-fold coordination. The location of admixed F in the (O,F) site on the bridge between the M -centred octahedra is confirmed by bond-valence calculations (Table 5).

Table 3. Coordinates, site multiplicities (Q), site occupancy factors (s.o.f.), and equivalent and anisotropic displacement parameters (U_{eq} , in \AA^2) of atoms for arsenatotitanite.

Site	Q	x	y	z	s.o.f.*	U_{eq}	U^{11}	U^{22}	U^{33}	U^{23}	U^{13}	U^{12}
A	4	1/2	0.17210(14)	1/4	$\text{Na}_{0.9}\text{Ca}_{0.1}$	0.0193(3)	0.0121(6)	0.0092(5)	0.0310(7)	0.000	0.0035(5)	0.000
M	4	0.0	0.0	0.0	$\text{Ti}_{0.5}\text{Fe}_{0.3}\text{Al}_{0.2}$	0.01061(14)	0.0049(2)	0.0067(3)	0.0174(3)	-0.00524(18)	0.0019(2)	0.00045(17)
As	4	0.0	0.31664(3)	1/4	1	0.00631(11)	0.00564(16)	0.00619(16)	0.00670(16)	0.000	0.00219(11)	0.000
O1	8	0.1901(3)	0.43415(18)	0.4163(2)	1	0.0117(3)	0.0088(7)	0.0121(7)	0.0120(7)	-0.0044(6)	0.0023(6)	-0.0028(6)
O2	8	0.1047(3)	0.20862(17)	0.1184(2)	1	0.0102(3)	0.0106(7)	0.0096(7)	0.0125(7)	-0.0024(5)	0.0068(6)	-0.0005(5)
(O,F)	4	0.0	0.0684(2)	3/4	$\text{O}_{0.6}\text{F}_{0.4}$	0.0105(4)	0.0123(9)	0.0100(9)	0.0093(9)	0.000	0.0048(7)	0.000

*Site occupancy factors for the A, M and (O,F) sites were fixed on the last stages of the refinement in accordance to both refined numbers of electrons and chemical data.

Table 4. Selected interatomic distances (\AA) in the structure of arsenatotitanite.

A-(O,F)	2.274(2)		As-O1	1.6840(15)	$\times 2$
A-O2	2.4304(16)	$\times 2$	As-O2	1.6858(15)	$\times 2$
A-O1	2.4746(19)	$\times 2$	<As-O>	1.685	
A-O2	2.6561(16)	$\times 2$			
<A-O>	2.485				
M-(O,F)	1.8966(6)	$\times 2$			
M-O1	1.9886(15)	$\times 2$			
M-O2	2.0145(15)	$\times 2$			
<M-O>	1.967				

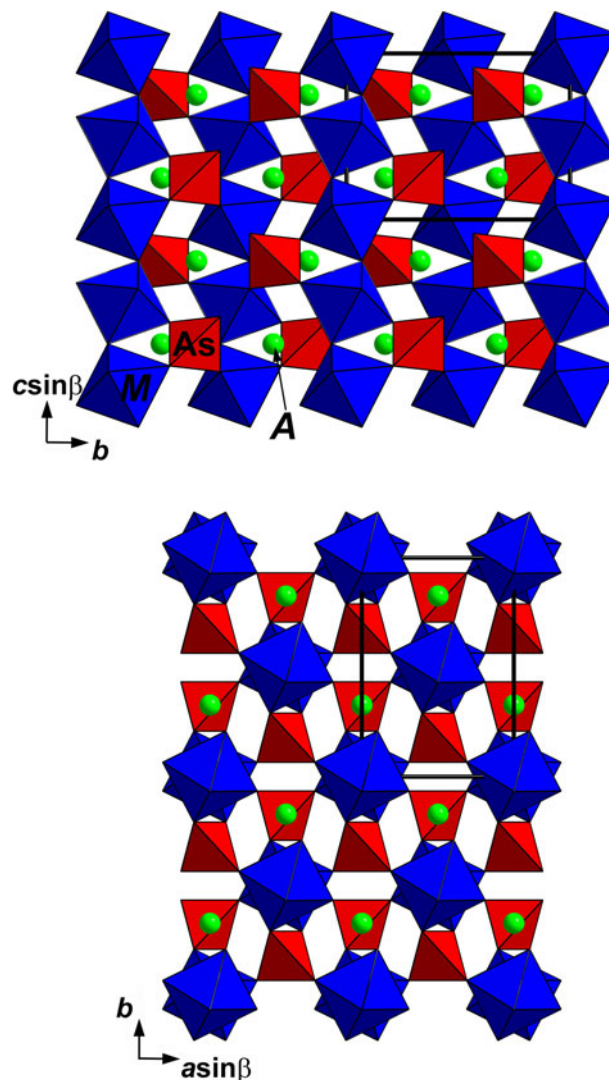
Table 5. Bond-valence calculations for arsenatotitanite.

	A	M	As	Σ
O1	0.16 $\times 2^1$	0.54 $\times 2^1$	1.26 $\times 2^1$	1.96
O2	0.19 $\times 2^1$, 0.09 $\times 2^1$	0.51 $\times 2^1$	1.25 $\times 2^1$	2.04
(O,F)	0.27	0.70 $\times 2^1 \times 2^-$		1.67
Σ	1.15	3.50	5.02	

Bond-valence parameters are taken from Gagné and Hawthorne (2015). All calculations were weighted according to site occupancies given in Table 3.

Discussion

Arsenatotitanite, ideally $\text{NaTiO}(\text{AsO}_4)$, is isostructural with minerals of the durangite group [isokite $\text{CaMg}(\text{PO}_4)\text{F}$, lacroixite $\text{NaAl}(\text{PO}_4)\text{F}$, panasqueiraite $\text{Ca}(\text{Mg,Fe})(\text{PO}_4)(\text{OH,F})$, durangite $\text{NaAl}(\text{AsO}_4)\text{F}$, maxwellite $\text{NaFe}^{3+}(\text{AsO}_4)\text{F}$, tilasite $\text{CaMg}(\text{AsO}_4)\text{F}$, and kononovite $\text{NaMg}(\text{SO}_4)\text{F}$] and of the titanite group [titanite $\text{CaTiO}(\text{SiO}_4)$, natrotitanite $(\text{Na}_{0.5}\text{Y}_{0.5})\text{TiO}(\text{SiO}_4)$, malayaite $\text{CaSnO}(\text{SiO}_4)$, and vanadomalayaite $\text{CaVO}(\text{SiO}_4)$] (Back, 2018). Arsenatotitanite combines chemical features of members of both groups: it is an arsenate, like durangite-group minerals, and, like representatives of the titanite group, contains tetravalent cation (Ti^{4+}) and additional anion O^{2-} as species-defining components. Comparison of the new mineral with closely related species is given in Table 6. We propose placing arsenatotitanite into the durangite group rather than the titanite group for three reasons: (1) the titanite group traditionally includes only silicates; (2) in the powder XRD data the new mineral is much closer to durangite-group arsenates than to the silicate titanite (Table 5); and (3) arsenatotitanite contains significant admixtures of Fe, Al, and F and in fact belongs to the solid-solution system with the end-members $\text{NaTiO}(\text{AsO}_4)$ – $\text{NaFe}^{3+}(\text{AsO}_4)\text{F}$ (maxwellite) – $\text{NaAl}(\text{AsO}_4)\text{F}$ (durangite). This solid-solution system which also involves tilasite $\text{CaMg}(\text{AsO}_4)\text{F}$ and kononovite $\text{NaMg}(\text{SO}_4)\text{F}$ was discussed, based on data for samples from fumarole deposits, by Pekov *et al.* (2018b).

**Fig. 4.** The crystal structure of arsenatotitanite in two projections; M = (Ti, Fe and Al), A = (Na and Ca); see Table 3. The unit cell is outlined.

The end-member arsenatotitanite can be considered as a natural analogue of synthetic $\text{NaTiO}(\text{AsO}_4)$ reported by Yahia *et al.* (2010).

Arsenatotitanite has a chemical analogue with K instead of Na, katiarsite $\text{KTiO}(\text{AsO}_4)$, discovered in the same Arsenatnaya fumarole. However, they are quite different in terms of crystal structure: katiarsite is a representative of the $\text{KTiO}(\text{PO}_4)$ (KTP) structure type (Pekov *et al.*, 2016a).

Table 6. Comparative data for arsenatrotitanite and closely related minerals.

Mineral	Arsenatrotitanite	Maxwellite	Durangite	Titanite
Ideal formula	NaTiO(AsO ₄)	NaFe ³⁺ (AsO ₄)F	NaAl(AsO ₄)F	CaTiO(SiO ₄)
Crystal system	Monoclinic	Monoclinic	Monoclinic	Monoclinic
Space group	C2/c	C2/c	C2/c	C2/c
a (Å)	6.698	6.667	6.57–6.58	6.56
b (Å)	8.763	8.781	8.50–8.52	8.71
c (Å)	7.198	7.134	7.02–7.05	7.06
β (°)	114.81	114.50	115.3–115.5	113.8
V (Å ³)	383.5	380.0	355–357	369
Z	4	4	4	4
Strongest reflections of the powder XRD pattern:	4.845–89	4.844–70	4.76–80	3.233–100
d (Å) – l	3.631–36	3.642–35	3.54–40	2.989–90
	3.431–48	3.437–35	3.34–50	2.595–90
	3.300–100	3.290–100	3.237–80	2.058–40
	3.036–100	3.039–75	2.970–100	1.643–40
	2.627–91	2.637–50	2.563–60	1.494–40
	2.615–57	2.614–80	2.549–57	1.418–40
Optical data	Biaxial	Biaxial	Biaxial	Biaxial
α	1.825	1.748	1.597–1.634	1.843–1.950
β	1.847	1.772	1.636–1.663	1.870–2.034
γ	1.896	1.798	1.647–1.685	1.943–2.110
Optical sign, 2V	(+) 70°	(+) 86°	(-) 68–85°	(+) 17–40°
Source	This work	Foord et al. (1991); Cooper and Hawthorne (1995)	Foord et al. (1985)	Anthony et al. (1995)

Acknowledgements. We thank Peter Leverett and two anonymous referees for valuable comments. This study was supported by the Russian Foundation for Basic Research, grant no. 17-05-00179. The technical support by the SPbSU X-Ray Diffraction Resource Center in the powder XRD study is acknowledged.

Supplementary material. To view supplementary material for this article, please visit <https://doi.org/10.1180/mgm.2018.134>

References

- Agilent Technologies (2014) *CrysAlisPro Software system, version 1.171.37.35*. Agilent Technologies UK Ltd, Oxford, UK.
- Anthony J.W., Bideaux R.A., Bladh K.W. and Nichols M.C. (1995) *Handbook of Mineralogy. II. Silica, Silicates*. Mineral Data Publishing, Tucson.
- Back M.E. (2018) *Fleischer's Glossary of Mineral Species 2018. 12th edition*. The Mineralogical Record Inc., Tucson.
- Britvin S.N., Dolivo-Dobrovolsky D.V. and Krzhizhanovskaya M.G. (2017) Software for processing the X-ray powder diffraction data obtained from the curved image plate detector of Rigaku RAXIS Rapid II diffractometer. *Zapiski Rossiiskogo Mineralogicheskogo Obshchestva*, **146**, 104–107 [in Russian].
- Churakov S.V., Tkachenko S.I., Korzhinskii M.A., Bocharnikov R.E. and Shmulovich K.I. (2000) Evolution of composition of high-temperature fumarolic gases from Kudryavy volcano, Iturup, Kuril Islands: the thermodynamic modeling. *Geochemistry International*, **38**, 436–451.
- Cooper M.A. and Hawthorne F.C. (1995) The crystal structure of maxwellite. *Neues Jahrbuch für Mineralogie. Monatshefte*, 97–104.
- Foord E.E., Oakman M.R. and Maxwell C.H. (1985) Durangite from the Black Range, New Mexico, and new data on durangite from Durango and Cornwall. *The Canadian Mineralogist*, **23**, 241–246.
- Foord E.E., Hlava P.F., Fitzpatrick J.J., Erd R.C. and Hinton R.W. (1991) Maxwellite and squacreekite, two new minerals from the Black Range tin district, Catron County, New Mexico, U.S.A. *Neues Jahrbuch für Mineralogie. Monatshefte*, 363–384.
- Gagné O.C. and Hawthorne F.C. (2015) Comprehensive derivation of bond-valence parameters for ion pairs involving oxygen. *Acta Crystallographica*, **B71**, 562–578.
- Pekov I.V., Zubkova N.V., Yapaskurt V.O., Belakovskiy D.I., Lykova I.S., Vigasina M.F., Sidorov E.G. and Pushcharovsky D.Yu. (2014a) New arsenate minerals from the Arsenatnaya fumarole, Tolbachik volcano, Kamchatka, Russia. I. Yurmarinite, Na₇(Fe³⁺, Mg, Cu)₄(AsO₄)₆. *Mineralogical Magazine*, **78**, 905–917.
- Pekov I.V., Zubkova N.V., Yapaskurt V.O., Belakovskiy D.I., Vigasina M.F., Sidorov E.G. and Pushcharovsky D.Yu. (2014b) New arsenate minerals from the Arsenatnaya fumarole, Tolbachik volcano, Kamchatka, Russia. II. Ericlaxmanite and kozyrevskite, two natural modifications of Cu₄O(AsO₄)₂. *Mineralogical Magazine*, **78**, 1527–1543.
- Pekov I.V., Zubkova N.V., Yapaskurt V.O., Belakovskiy D.I., Vigasina M.F., Sidorov E.G. and Pushcharovsky D.Yu. (2015a) New arsenate minerals from the Arsenatnaya fumarole, Tolbachik volcano, Kamchatka, Russia. III. Popovite, Cu₅O₂(AsO₄)₂. *Mineralogical Magazine*, **79**, 133–143.
- Pekov I.V., Zubkova N.V., Belakovskiy D.I., Yapaskurt V.O., Vigasina M.F., Sidorov E.G. and Pushcharovsky D.Yu. (2015b) New arsenate minerals from the Arsenatnaya fumarole, Tolbachik volcano, Kamchatka, Russia. IV. Shchurovskiyite, K₂CaCu₆O₂(AsO₄)₄, and dmsokolovite, K₃Cu₅AlO₂(AsO₄)₄. *Mineralogical Magazine*, **79**, 1737–1753.
- Pekov I.V., Yapaskurt V.O., Britvin S.N., Zubkova N.V., Vigasina M.F. and Sidorov E.G. (2016a) New arsenate minerals from the Arsenatnaya fumarole, Tolbachik volcano, Kamchatka, Russia. V. Katiarsite, KTiO(AsO₄). *Mineralogical Magazine*, **80**, 639–646.
- Pekov I.V., Zubkova N.V., Yapaskurt V.O., Polekhovskiy Yu.S., Vigasina M.F., Belakovskiy D.I., Britvin S.N., Sidorov E.G. and Pushcharovsky D.Yu. (2016b) New arsenate minerals from the Arsenatnaya fumarole, Tolbachik volcano, Kamchatka, Russia. VI. Melanarsite, K₃Cu₇Fe³⁺O₄(AsO₄)₄. *Mineralogical Magazine*, **80**, 855–867.
- Pekov I.V., Yapaskurt V.O., Belakovskiy D.I., Vigasina M.F., Zubkova N.V. and Sidorov E.G. (2017) New arsenate minerals from the Arsenatnaya fumarole, Tolbachik volcano, Kamchatka, Russia. VII. Pharmazincite, KZnAsO₄. *Mineralogical Magazine*, **81**, 1001–1008.
- Pekov I.V., Zubkova N.V., Agakhanov A.A., Yapaskurt V.O., Chukanov N.V., Belakovskiy D.I., Sidorov E.G. and Pushcharovsky D.Yu. (2018a) New arsenate minerals from the Arsenatnaya fumarole, Tolbachik volcano, Kamchatka, Russia. VIII. Arsenowagnerite, Mg₂(AsO₄)F. *Mineralogical Magazine*, **82**, 877–888.
- Pekov I.V., Koshlyakova N.N., Zubkova N.V., Lykova I.S., Britvin S.N., Yapaskurt V.O., Agakhanov A.A., Shchupalkina N.V., Turchkova A.G. and Sidorov E.G. (2018b) Fumarolic arsenates – a special type of arsenic mineralization. *European Journal of Mineralogy*, **30**, 305–322.
- Sheldrick G.M. (2008) A short history of SHELX. *Acta Crystallographica*, **A64**, 112–122.
- Yahia H.B., Rodewald U.C. and Pöttgen R. (2010) Salt flux crystal growth of the titanyl arsenate NaTiO(AsO₄). *Monatshefte für Chemie und verwandte Teile anderer Wissenschaften*, **141**, 495–499.
- Zelenski M., Malik N. and Taran Yu. (2014) Emissions of trace elements during the 2012–2013 effusive eruption of Tolbachik volcano, Kamchatka: enrichment factors, partition coefficients and aerosol contribution. *Journal of Volcanology and Geothermal Research*, **285**, 136–149.