

Original Article

Cite this article: van Hulst BM, de Zeeuw P, Vlaskamp C, Rijks Y, Zandbelt BB, Durston S (2018). Children with ADHD symptoms show deficits in reactive but not proactive inhibition, irrespective of their formal diagnosis. *Psychological Medicine* **48**, 2515–2521. <https://doi.org/10.1017/S0033291718000107>

Received: 6 April 2016
Revised: 5 January 2018
Accepted: 5 January 2018
First published online: 8 February 2018

Key words:

Attention-deficit disorder with hyperactivity; child; cognitive control; neuropsychology; proactive inhibition; reactive inhibition; trans-diagnostic

Author for correspondence:

Branko M. van Hulst, E-mail: b.vanhulst@umcutrecht.nl

Children with ADHD symptoms show deficits in reactive but not proactive inhibition, irrespective of their formal diagnosis

Branko M. van Hulst¹, Patrick de Zeeuw¹, Chantal Vlaskamp¹, Yvonne Rijks¹, Bram B. Zandbelt² and Sarah Durston¹

¹NICHE Lab, Department of Psychiatry, Brain Center Rudolf Magnus, University Medical Center Utrecht, Utrecht, The Netherlands and ²Donders Institute for Brain, Cognition and Behavior, Radboud University, Nijmegen, The Netherlands

Abstract

Background. Attenuated inhibitory control is one of the most robust findings in the neuropsychology of attention-deficit/hyperactivity disorder (ADHD). However, it is unclear whether this represents a deficit in outright stopping (reactive inhibition), whether it relates to a deficit in anticipatory response slowing (proactive inhibition), or both. In addition, children with other development disorders, such as autism spectrum disorder (ASD), often have symptoms of inattention, impulsivity, and hyperactivity similar to children with ADHD. These may relate to similar underlying changes in inhibitory processing.

Methods. In this study, we used a modified stop-signal task to dissociate reactive and proactive inhibition. We included not only children with ADHD, but also children primarily diagnosed with an ASD and high parent-rated levels of ADHD symptoms.

Results. We replicated the well-documented finding of attenuated reactive inhibition in children with ADHD. In addition, we found a similar deficit in children with ASD and a similar level of ADHD symptoms. In contrast, we found no evidence for deficits in proactive inhibition in either clinical group.

Conclusions. These findings re-emphasize the role of reactive inhibition in children with ADHD and ADHD symptoms. Moreover, our findings stress the importance of a trans-diagnostic approach to the relationship between behavior and neuropsychology.

Introduction

Attenuated inhibitory performance is one of the most robust findings in the neuropsychology of attention-deficit/hyperactivity disorder (ADHD) (Alderson *et al.* 2007; Lipszyc & Schachar, 2010). However, it is unclear whether this represents a deficit in outright stopping (reactive inhibition), whether it relates to a deficit in strategic response slowing (proactive inhibition), or both (Chevrier *et al.* 2007; Bhaijiwala *et al.* 2014). In addition, children with other development disorders, such as autism spectrum disorder (ASD), often have symptoms of inattention, impulsivity, and hyperactivity similar to children with ADHD. These may relate to similar underlying changes in inhibitory processing. Indeed, it is unclear if inhibitory deficits are specific to the diagnosis of ADHD or related to symptoms of ADHD irrespective of the formal diagnosis. Here, we set out to dissociate reactive and proactive inhibition in children with symptoms of ADHD, using a modified stop-signal task (SST), called the stop-signal anticipation task (SSAT) (Zandbelt & Vink, 2010).

The SST assesses how participants stop a response that has already been initiated (Verbruggen & Logan, 2008). A stream of go signals is presented that all require a response. Infrequently, a go signal is followed by a stop signal indicating that the participant should withhold his or her response. The ability to stop is conceptualized in terms of a race between two independent processes: a go process that produces the response and a stop process that cancels it (Logan & Cowan, 1984). If the go process finishes first, a response is produced; if the stop process finishes first, the response is canceled. Furthermore, this model provides methods for the estimation of the speed of the (covert) stop process – the stop-signal reaction time (SSRT) – on the basis of the response rate on stop trials and response times (RT) on go trials. SSRT is a measure of reactive inhibition, but does not address proactive inhibition.

To measure proactive inhibition, the ability to adapt ongoing responses in relation to contextual cues, researchers have adapted the SST by introducing cues that inform the participant about the possibility of an upcoming stop signal (Verbruggen & Logan, 2009; Zandbelt & Vink, 2010). For example, in the SSAT, a visual cue indicates the probability that a stop signal will occur (Zandbelt & Vink, 2010; Zandbelt *et al.* 2013; Vink *et al.* 2015). Participants respond to this manipulation by adjusting their response strategy, slowing down as stop-signal

© Cambridge University Press 2018. This is an Open Access article, distributed under the terms of the Creative Commons Attribution-NonCommercial-ShareAlike licence (<http://creativecommons.org/licenses/by-nc-sa/4.0/>), which permits non-commercial re-use, distribution, and reproduction in any medium, provided the same Creative Commons licence is included and the original work is properly cited. The written permission of Cambridge University Press must be obtained for commercial re-use.

probability increases. Another prominent feature of this task is that it requires participants to make a timed response, rather than a speeded response as in the standard SST. As a result, response latency (i.e. RT) differences between groups are usually small or absent (e.g. Zandbelt *et al.* 2011). Thus, the SSAT enables the quantification of proactive response slowing and reactive stopping, while minimizing group differences in baseline response latencies.

Deficits in inhibitory processing have been reported across multiple disorders (e.g. Enticott *et al.* 2008; Geurts *et al.* 2014) and deficits associated with a diagnostic category are not necessarily specific to that diagnosis. Therefore, we did not only include children with ADHD, but also children with high parent-rated levels of ADHD symptoms, who had been primarily diagnosed with an ASD. We hypothesized that children with symptoms of ADHD have a specific neurobiological profile, irrespective of their clinical diagnosis. Moreover, by relating performance measures to parent-rated ADHD symptoms across clinical groups, we could analyze neuropsychological functioning in a trans-diagnostic fashion. We hypothesized that these groups would not differ from each other in ADHD symptoms or task performance, as might be suggested by their diagnostic labels.

We first tested if the well-documented finding of slower inhibitory speed (i.e. SSRT) in children with ADHD could be replicated, in the context of timed responding (SSAT) as opposed to speeded responding (standard SST). Second, we investigated whether children with ADHD showed a deficit in proactive inhibition in addition to a deficit in reactive inhibition. Third, we tested if the findings were specific to children with a diagnosis of ADHD or rather were also present in children with ASD and ADHD symptoms. Finally, we tested for an association between parent-rated ADHD symptoms and inhibitory performance across diagnostic groups.

Method

Participants

One hundred and eight right-handed boys aged 8–12 years met full inclusion criteria for this study. An initial screening for off-task behavior, based on mean RT and/or percentage omission errors (OMISS), yielded five extreme outlier subjects (three interquartile ranges above the third quartile of the sample as a whole). As such, data from 103 children were available for final analyses: 39 children with ADHD, 32 children with ASD and ADHD symptoms, and 32 typically developing controls. Table 1 provides demographic information. The institutional review board of the University Medical Center Utrecht (UMCU) approved all study

procedures. Both parents and children aged 12 years provided written informed consent, younger children provided verbal assent. Participants with ADHD or ASD and ADHD symptoms were recruited through schools for special education and the UMCU outpatient clinic for developmental disorders. Control participants were recruited through primary schools. Only children using no medication or short-acting psychostimulants (e.g. methylphenidate) were included. In the ADHD group, 28 of 39 participants (72%) were on short-acting psychostimulants. In the group of children with ASD and ADHD symptoms, this was 21 of 29 participants (72%). Here, data on medication use were missing for three participants. All parents were instructed not to administer medication in the 24 h prior to testing. All children received a 30 Euro gift voucher for participating in the study. A majority (76 of 103) of participants included in this study also participated in a set of two fMRI experiments. Results from these tasks were analyzed separately and have been submitted for publication elsewhere.

In/exclusion criteria

The Diagnostic Interview Schedule for Children (DISC-IV, parent version) (Shaffer *et al.* 2000) was administered to parents of all participants. In addition, children participated in a four-subtest short form of the Wechsler Intelligence Scale for Children (WISC-III) in order to estimate full-scale IQ. General in- and exclusion criteria were: age 8 through 12 years, an (estimated) IQ equal to or higher than 70, no history of or present neurological disorder, and the ability to speak and comprehend Dutch. Additional criteria for children with ADHD included a clinical Diagnostic and Statistical Manual of Mental Disorders, Fourth Edition (DSM-IV) diagnosis of ADHD confirmed by the DISC-IV. Children with ASD and parent-rated ADHD symptoms were included if they met criteria for a clinical DSM-IV diagnosis of ASD *and* scored above the age-appropriate threshold for subclinical problems on the attention problems subscale of the Child Behavior Checklist (CBCL) (Verhulst *et al.* 1996). The absence of psychiatric disorders in typically developing children was confirmed using DISC-IV (with an exception of specific phobia and enuresis). Furthermore, typically developing children were required to have normal (not clinical or subclinical) scores on any of the CBCL subscales.

Questionnaires

Parents were instructed to rate their child's behavior without medication. In addition to the CBCL, parents completed the

Table 1. Demographic characteristics

	Control (s.d.)	ADHD (s.d.)	ASD (s.d.)	F-value	p Value
N (total = 103)	32	39	32	–	–
Age	10.1 (1.1)	10.5 (1.2)	10.7 (1.4)	1.69 (2100)	0.190
IQ	112.9 (15.8)	105.4 (16.8)	106.4 (18.0)	1.95 (2100)	0.147
SWAN-hyp	0.36 (0.66)	–1.06 (0.66) ^a	–1.02 (0.77) ^a	44.08 (2,96)	<0.001
SWAN-att	0.27 (0.53)	–1.33 (0.66) ^a	–1.36 (0.65) ^a	73.76 (2,96)	<0.001

s.d., standard deviation; ADHD, attention-deficit/hyperactivity disorder; ASD, autism spectrum disorder; SWAN-hyp, Strengths and Weaknesses of ADHD and Normal Behavior hyperactivity/impulsivity subscale; SWAN-att, Strengths and Weaknesses of ADHD and Normal Behavior inattention subscale.

^aSignificant *post hoc* group difference from typically developing children after FDR correction.

Strengths and Weaknesses of ADHD and Normal Behavior (SWAN) questionnaire (Polderman *et al.* 2007; Lakes *et al.* 2012). We chose this questionnaire as it assesses symptoms listed in the DSM-IV definition of ADHD across the complete spectrum of functioning (both strengths and weaknesses relative to their peers). It measures items on a seven-point scale ranging from 'far below average' via 'below average', 'somewhat below average', 'average', 'somewhat above average', 'above average' to 'far above average'. This way, in general population samples, scores are normally distributed (Polderman *et al.* 2007).

Stop-signal anticipation task

The SSAT is a variation on a classic stop-signal paradigm and was designed to assess both reactive and proactive inhibition (Zandbelt & Vink, 2010). We introduced the task in a storyline format, where children were asked to help a spaceship land on the moon (see next paragraph). During all trials, three horizontal lines were shown on a gray background (see Fig. 1). The second line (i.e. target line) was placed at 80% of the distance from the bottom line to the top line. During every go trial, a bar moved from the bottom to the top line in 1000 milliseconds (ms). The first objective was to press a button with the right index finger to halt the bar as close to the target line as possible (i.e. go trial with a target RT of 800 ms). Stop trials were identical to go trials, except that the program made the bar stop before it reached the target line (i.e. stop signal). In this case, participants had to withhold the button press. The probability that a stop signal would appear was manipulated across trials (randomly interspersed) and the color of the target line provided information on this stop-signal probability. The task consisted of four blocks. In each block, there were 41 green trials with 0% stop-signal probability (41 go trials, zero stop trials), 40 yellow trials with 27.5% stop-signal probability (29 go trials, 11 stop trials), 40 orange trials with 32.5% stop-signal probability (27 go trials, 13 stop trials), and 40 red trials with 37.5% stop-signal probability (25 go trials, 15 stop trials), so that there were 122 go trials and 39 stop trials per block. The stop-signal onset time was initially set to 500 ms after trial onset (i.e. 300 ms before the target RT). During the experiment, stop-signal onset time was adjusted in steps of 25 ms for each stop-signal probability level separately, depending on the stopping performance. Specifically, if stopping was successful

on the previous stop trial within a probability level, then stopping was made more difficult by shifting the stop-signal onset time 25 ms toward the target RT. This process was reversed when stopping failed. This staircase procedure ensures roughly equal numbers of successful and unsuccessful stop trials.

We explained the SSAT to the children in a storyline format. We told them that the first objective was to ensure a soft landing of the spaceship. To achieve this, children were asked to stop the bar as close to the target line as possible (go trial). The second objective was to cancel a landing if circumstances became too dangerous. To achieve this, children were asked to withhold the button press whenever the bar stopped before it reached the target line (stop trial). We instructed the children that a green line indicated that the bar would never be stopped before the target line, a yellow line represented 'occasionally', an orange line represented 'sometimes', and a red line indicated 'quite often'. We instructed children that the go and stop trials were equally important and that it would not always be possible to suppress a response when a stop signal occurred. Furthermore, we did not give children any instructions on how to adapt their task strategy in response to this information. All participants performed three practice levels (of respectively 30, 60, and 161 trials) to get acquainted with the paradigm.

A basic differentiation could be made between two types of trials: baseline go trials (stop-signal probability = 0%) and uncertain go and stop trials (stop-signal probability >0%). Uncertain go and stop trials occurred with three different stop probabilities (27.5%, 32.5%, and 37.5%). Mean RT, standard deviations of response times (SDRT), and OMISS were computed separately for certain go trials and for uncertain go trials (pooled across stop-signal probability conditions). SSRT was computed using the integration method (Logan & Cowan, 1984). We first computed the SSRT of the separate conditions and then pooled them using a weighted mean of the three conditions. To test the basic assumptions of the SST, mean RT of stop failure trials (stop-failure RT) and percentage stop accuracy were computed pooled across all stop-signal probability conditions.

Statistical analyses

According to the race model, a stop-failure RT occurs when the go process finishes before the stop process (i.e. the go process

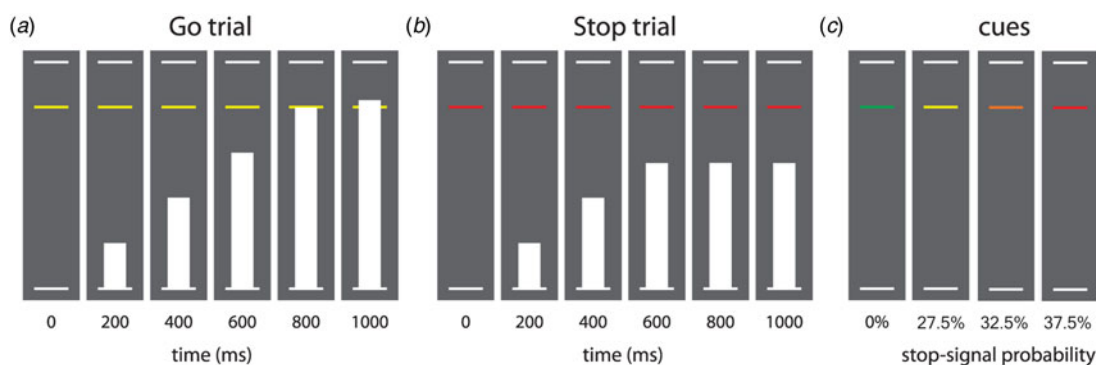


Fig. 1. Task design of the stop-signal anticipation task. *Note:* Three horizontal lines formed the background displayed continuously during the task. (a) In each trial, a bar moved at constant speed from the bottom up, reaching the middle line in 800 ms. The main task was to stop the bar as close to the middle line as possible by pressing a button with the right index finger. These trials are referred to as go trials. (b) In a minority of trials, the bar stopped moving automatically before reaching the middle line, indicating that a response had to be stopped. These trials are referred to as stop trials. Stop-signal onset was adjusted in steps of 25 ms based on stopping performance, according to a 1-up-1-down staircase procedure (see Methods section). (c) The probability that a stop-signal would occur was manipulated across trials and was indicated by the color of the target response line. There were four stop-signal probability levels: 0% (green), 27.5% (yellow), 32.5% (orange), and 37.5% (red). Caption and figure (with minor modifications) reprinted with permission from Zandbelt & Vink (2010).

escapes inhibition). As a result, a prediction of the model is that stop-failure RT is shorter than go RT. We tested this prediction for each group separately using a paired samples *t* test. Second, we tested whether the staircase procedure had indeed produced 50% stop accuracy across all stop-signal probabilities using a one-sample *t* test.

We tested for an effect of diagnosis on SSRT, $RT_{\text{certain-go}}$, $RT_{\text{uncertain-go}}$, $SDRT_{\text{certain-go}}$, $SDRT_{\text{uncertain-go}}$, $OMISS_{\text{certain-go}}$, $OMISS_{\text{uncertain-go}}$, using analysis of covariance (ANCOVA) including age as a covariate. *Post hoc* testing was applied as appropriate. Proactive inhibition was operationalized as within-subject slowing of RT with increasing stop-signal probability. We quantified this using repeated measures ANCOVA with stop-signal probability as within-subject factor, diagnosis as between-subject factor, and age as covariate. We used Mauchly's test for sphericity. If the assumption of sphericity was not met, the Greenhouse–Geisser correction was applied, resulting in corrected degrees of freedom. In addition, we tested for an association between ADHD symptoms (i.e. SWAN subscale scores) and all outcome measures. We used multiple ANCOVAs with task performance as the dependent variable and age and ADHD symptom scores as covariates. If no between-group differences were found in the between-group analyses, we tested this on the entire sample. For measures that did show between-group differences, we tested within clinical (i.e. ADHD and ASD) and comparison groups separately. Again, age was included as a covariate. In all ANCOVA analyses, we tested the assumption of homogeneity of regression slopes by testing for an interaction effect between group and age. If this assumption was met, the non-significant interaction effect was left out of the final model. Results were corrected for multiple comparisons using a false discovery rate (FDR) correction on the multiple ANCOVA results (per task performance measure) using the Benjamini–Hochberg procedure (Benjamini & Hochberg, 1995).

All outcome measures except SSRT were not distributed normally. ANCOVA is fairly robust for deviations from normality, especially when group sizes are approximately equal (Schmider *et al.* 2010). Therefore, we chose to report ANCOVA results and provide a supplement (see online Supplementary Table S1) with additional non-parametric (Kruskal–Wallis) analyses. These analyses did not include age as a covariate. All reported results were replicated in the non-parametric analyses. Lastly, we performed a *post hoc* repeated measures ANOVA with omission rates for certain and uncertain go trials as repeated measures and group status as factor. An increased omission rate on uncertain go trials would further indicate that children proactively adjust their response thresholds.

Results

Questionnaire data

ANOVA indicated between-group differences on the hyperactivity/impulsivity and inattention scales of the SWAN (see Table 1). *Post hoc* testing showed that both ADHD symptom groups had lower scores (i.e. more symptoms of ADHD) on the SWAN subscales than typically developing children. Mean scores for both ADHD symptom groups translated to 'somewhat below average' (between -1.36 and -1.02) on both scales; and 'average' scores on both scales (0.27 and 0.36) for typically developing children. Notably, we found no difference between children with ADHD and children with ASD and symptoms of ADHD for

either inattention or hyperactivity, although only subclinical scores of inattention were an inclusion criterion. The range of plus and minus two standard deviations roughly translates to scores between 'far below average' (-2.57) and 'average' (0.18) for both ADHD symptom groups; and between 'somewhat below average' (-0.87) to above average (1.50) for typically developing children.

Model assumptions

We first tested the assumptions underlying the stop-signal paradigm for each group separately. As expected, in each group, mean RT were shorter on stop-failure trials than on uncertain go trials (see online Supplementary Table S2). Stop accuracy did not differ from 50% for typically developing children and children with ASD and symptoms of ADHD. In children with an ADHD diagnosis, we found a mean stop accuracy of 48.9% (see online Supplementary Table S3). This difference was significant, but not considered a substantial violation of model assumptions.

Response time measures

We found main effects of group and age on the SDRT in both conditions (certain-go and uncertain-go), and on the OMISS in both conditions (see Table 2 for descriptive and inferential statistics). We found no group by age interactions. *Post hoc* analyses showed higher SDRT and more omission errors in both clinical groups compared to typically developing children, independent of age. We found no group differences in $RT_{\text{certain-go}}$ and $RT_{\text{uncertain-go}}$.

Inhibition measures

For reactive inhibition, we found group differences and a main effect of age on SSRT (see Fig. 2 and Table 2 for detailed results). We found no group by age interactions. *Post hoc* analysis showed longer SSRTs in both clinical groups than in typically developing children. For proactive inhibition, we found a within-subject main effect of stop-signal probability on mean RT ($F_{(2,71,271)} = 57.92$, $p < 0.001$), where an increase in stop-signal probability was associated with proactive slowing of RT (see online Supplementary Fig. S1). However, we found no group by stop-signal probability interaction and thus no evidence for differential proactive inhibition between groups ($F_{(5,43,271)} = 1.25$, $p = 0.285$). Further, in order to test another proxy measure of proactive inhibition, we performed a *post hoc* repeated measures ANOVA with omission rates for certain and uncertain go trials as repeated measures, and group status as factor. We found a main within-subject effect of certainty on omission errors, with higher omission rates in uncertain go trials ($F_{(1,100)} = 12.44$, $p = 0.001$) indicating proactive inhibition across all children. We found no interaction effect with group and hence no indication for group differences in proactive inhibition.

Within-group effect of ADHD symptoms

We found no association between measures of task performance and attention problems (SWAN attention problems subscale) or hyperactivity/impulsivity (SWAN hyperactivity/impulsivity subscale). We tested this separately in the combined clinical group (ADHD and ASD with ADHD symptoms) and in the comparison group. In typically developing children, the association between attention problems and SSRT ($F_{(1,29)} = 4.43$, $p = 0.044$) was

Table 2. ANCOVA results for task performance – reactive inhibition

	F-value	p Value	Partial ϵ^2	Control M (s.d.)	ADHD M (s.d.)	ASD M (s.d.)
RT_{certain-go}						
Group	1.56 (2,99)	0.216	0.031	821 (22.2)	824 (21.3)	829 (21.8)
Age	2.03 (1,99)	0.158	0.020	–	–	–
RT_{uncertain-go}						
Group	1.48 (2,99)	0.234	0.029	836 (24.5)	833 (20.1)	842 (25.6)
Age	2.03 (1,99)	0.158	0.020	–	–	–
SDRT_{certain-go}						
Group	5.43 (2,99)	0.006 ^a	0.099	57.9 (14.2)	73.6 (26.3)	68.9 (31.3)
Age	12.54 (1,99)	0.001 ^a	0.112	–	–	–
SDRT_{uncertain-go}						
Group	5.50 (2,99)	0.005 ^a	0.100	58.7 (12.9)	73.3 (22.0)	70.0 (30.4)
Age	9.76 (1,99)	0.002 ^a	0.090	–	–	–
OMISS_{certain-go}						
Group	7.87 (2,99)	0.001 ^a	0.137	2.10 (2.35)	5.36 (3.91)	4.52 (5.61)
Age	10.76 (1,99)	0.001 ^a	0.098	–	–	–
OMISS_{uncertain-go}						
Group	6.61 (2,99)	0.002 ^a	0.118	3.16 (2.88)	6.01 (3.73)	5.18 (4.75)
Age	8.33 (1,99)	0.005 ^a	0.078	–	–	–
SSRT						
Group	5.67 (2,99)	0.005 ^a	0.103	280 (32.7)	298 (26.6)	291 (32.6)
Age	19.34 (1,99)	<0.001 ^a	0.163	–	–	–

s.d., standard deviation; ADHD, attention-deficit/hyperactivity disorder; ASD, autism spectrum disorder; RT, mean response time; SDRT, standard deviation of response times; OMISS, percentage of omission errors; SSRT, stop-signal reaction time; SSD, stop-signal delay.

^aSignificant after FDR correction.

nominally significant, but this did not survive FDR correction for multiple comparisons. For those performance measures that did not show between-group differences in the initial ANCOVA, the effect of ADHD symptom scores on task performance was tested across all groups. In this analysis, we found no association between the subscales of the SWAN and RT_{certain-go}, RT_{uncertain-go} or the within-subject main effect of stop-signal probability on mean RT (i.e. proactive inhibition).

Discussion

We used a modified SST to disentangle proactive inhibition (strategic response slowing) and reactive inhibition (outright stopping) in ADHD. We replicated the well-documented finding of poorer reactive inhibition in children with ADHD compared with typically developing children. In addition, we found this inhibitory deficit in children with ASD and a similar level of ADHD symptoms. We found no evidence for a deficit in proactive inhibition in either clinical group.

Markedly, we found deficits in reactive inhibition (i.e. increased SSRT) in children with ADHD in a task that involves timed as opposed to speeded responding. Possibly as a result of these timed responses, we found no evidence for differences in mean RT on go trials between children with ADHD and typically developing children. This argues against suggestions that

increased RT may confound changes in SSRT in ADHD (Alderson *et al.* 2007).

The standard SST assesses reactive inhibition only (Zandbelt & Vink, 2010; Aron, 2011; Zandbelt *et al.* 2013). To facilitate a distinction between proactive and reactive processes, a task-based manipulation of proactive inhibition was developed by Zandbelt & Vink (2010). They found that, without any explicit instructions, healthy adults slowed their responses when stop-signal probability increased (Zandbelt & Vink, 2010; Zandbelt *et al.* 2011). Here, we replicated this finding in children, showing a similar effect of proactive inhibition overall. However, we found no evidence for a deficit in proactive inhibition in children with symptoms of ADHD. We did find decreased accuracy on uncertain go trials compared with certain go trials, perhaps further indicating proactive slowing as children adjusted their response thresholds to specific go trials. This could be further investigated using more elaborate methods such as diffusion models in studies specifically designed to this purpose (e.g. Verbruggen & Logan, 2009).

Thus, children with symptoms of ADHD did seem to engage a response set where they anticipated infrequent stop trials, yet they still showed reduced inhibitory processing. Deficits in response inhibition in children with ADHD have been shown before with a relatively high degree of consistency (Lijffijt *et al.* 2005; Alderson *et al.* 2007; Lipszyc & Schachar, 2010). Response inhibition is an operationalization of cognitive control and it has been theorized that changes in cognitive control may be one of

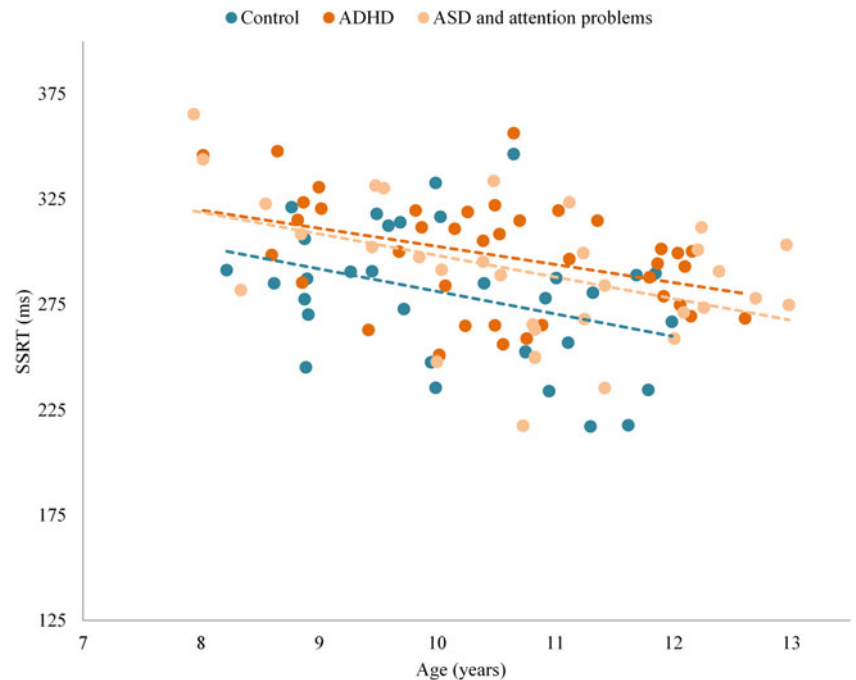


Fig. 2. Group differences in reactive inhibition across the age range. ADHD, attention-deficit/hyperactivity disorder; ASD, autism spectrum disorder; SSRT, stop-signal reaction time; ms, milliseconds.

multiple, separable neurobiological pathways that can lead to symptoms of ADHD (Sonuga-Barke, 2002, 2003, 2005; Nigg *et al.* 2005; Durston *et al.* 2011). Deficits in reactive inhibition have been suggested to be mediated by a neurobiological deficit in the hyperdirect pathway of motor control (including right inferior frontal gyrus, subthalamic nucleus and globus pallidus pars interna) subserving fast, global motor inhibition (Nambu *et al.* 2002; Frank *et al.* 2007; Aron, 2011). Alternatively, this deficit could be due to impairments in attentional processing that manifest when multiple signals (go and stop) are processed in parallel. Attentional lapses could also affect task performance in children with (symptoms of) ADHD (Sonuga-Barke & Castellanos, 2007). In line with other studies (Willcutt *et al.* 2005; Metin *et al.* 2012), we found an increase in omission errors in children with (symptoms of) ADHD, that may be suggestive of attentional lapses. In the SSAT, these attentional lapses result in better stopping performance (i.e. SSRT), as lapses during stop trials inevitably result in correct stop trials. If this is the case, the attenuated response inhibition that we found could be an underestimation of the true effect.

Meta-analytical studies have also confirmed deficits in response inhibition in children with ASD (Geurts *et al.* 2014). In line with these studies, we did not find deficits in reactive inhibition to be specific to children with a primary diagnosis of ADHD. Children with similar levels of parent-rated ADHD symptoms but a primary diagnosis of ASD showed similar deficits in reactive inhibition. We hypothesized that if an inhibitory deficit was found across both clinical groups, inhibitory performance was likely to be related to ADHD symptoms in a dimensional way. Such a linear relationship has previously been reported in population-based studies (Tillman *et al.* 2007; Crosbie *et al.* 2013). Surprisingly we found no such trans-diagnostic relationship within our clinical groups. One possible explanation may be that the linear relationship does not hold for the extreme ends of the distribution. As an example, a diathesis-stress model of nature–nurture interactions could imply that above a certain threshold of inhibitory problems, environmental factors have

more impact on the expression of ADHD symptoms than inhibitory problems themselves (Monroe & Simons, 1991; Belsky & Pluess, 2009). Another explanation could be that different neurobiological mechanisms lead to reduced inhibitory control in either group (i.e. ADHD and ASD).

In this study, we were able to dissociate reactive and proactive inhibition. However, we did not dissociate reactive inhibition from attentional switching. Psychophysiological measures such as event-related potentials have been used to disentangle different aspects of response inhibition as measured by the stop-signal paradigm (Kenemans, 2015). Because of the high temporal resolution of EEG, distinctions can be made between different phases of processing. These studies point toward a deficit in the switching of attention to the stop signal as a possible cause for inhibitory problems (Bekker *et al.* 2005; Kenemans *et al.* 2005; Verbruggen *et al.* 2010). One could even argue that as per definition reactive inhibition is a task of attentional switching.

In sum, we found evidence for a deficit of reactive inhibition in children with ADHD symptoms in the absence of evidence for deficits in proactive inhibition. These findings re-emphasize the role of reactive inhibition as a separable neuropsychological domain that is affected in children with ADHD. Moreover, our findings in children with ASD and symptoms of ADHD stress the importance of a trans-diagnostic approach to the relation between behavior and neuropsychology.

Supplementary material. The supplementary material for this article can be found at <https://doi.org/10.1017/S0033291718000107>

Acknowledgements. The authors thank all children who participated in this study. The authors thank all of their parents. The authors also thank the research assistants and interns, and all the members of their team who contributed to data collection. This work was supported by a grant from the Netherlands Organization for Scientific Research (Nederlandse Organisatie voor Wetenschappelijk Onderzoek, NWO) (SD, grant number Vici-453-10-005). The funding source had no influence on study design, data analysis or the written report.

Declaration of Interest. None.

Ethical Standards. The authors assert that all procedures contributing to this work comply with the ethical standards of the relevant national and institutional committees on human experimentation and with the Helsinki Declaration of 1975, as revised in 2008.

References

- Alderson RM, Rapport MD and Kofler MJ (2007) Attention-deficit/hyperactivity disorder and behavioral inhibition: a meta-analytic review of the stop-signal paradigm. *Journal of Abnormal Child Psychology* **35**, 745–758.
- Aron AR (2011) From reactive to proactive and selective control: developing a richer model for stopping inappropriate responses. *Biological Psychiatry* **69**, e55–e68.
- Bekker EM, Overtom CCE, Kooij JJS, Buitelaar JK, Verbaten MN and Kenemans JL (2005) Disentangling deficits in adults with attention-deficit/hyperactivity disorder. *Archives of General Psychiatry* **62**, 1129–1136.
- Belsky J and Pluess M (2009) Beyond diathesis stress: differential susceptibility to environmental influences. *Psychological Bulletin* **135**, 885–908.
- Benjamini Y and Hochberg Y (1995) Controlling the false discovery rate: a practical and powerful approach to multiple testing. *Journal of the Royal Statistical Society B* **57**, 289–300.
- Bhajiwal M, Chevrier A and Schachar R (2014) Withholding and canceling a response in ADHD adolescents. *Brain and Behavior* **4**, 602–614.
- Chevrier AD, Noseworthy MD and Schachar R (2007) Dissociation of response inhibition and performance monitoring in the stop signal task using event-related fMRI. *Human Brain Mapping* **28**, 1347–1358.
- Crosbie J, Arnold P, Paterson A, Swanson JM, Dupuis A, Li X *et al.* (2013) Response inhibition and ADHD traits: correlates and heritability in a community sample. *Journal of Abnormal Child Psychology* **41**, 497–507.
- Durston S, van Belle J and de Zeeuw P (2011) Differentiating frontostriatal and fronto-cerebellar circuits in attention-deficit/hyperactivity disorder. *Biological Psychiatry* **69**, 1178–1184.
- Enticott PG, Ogloff JRP and Bradshaw JL (2008) Response inhibition and impulsivity in schizophrenia. *Psychiatry Research* **157**, 251–254.
- Frank MJ, Samanta J, Moustafa AA and Sherman SJ (2007) Hold your horses: impulsivity, deep brain stimulation, and medication in parkinsonism. *Science (New York, N.Y.)* **318**, 1309–1312.
- Geurts HM, van den Bergh SFW and Ruzzano L (2014) Prepotent response inhibition and interference control in autism spectrum disorders: two meta-analyses. *Autism Research* **7**, 407–420.
- Kenemans JL (2015) Specific proactive and generic reactive inhibition. *Neuroscience & Biobehavioral Reviews* **56**, 115–126.
- Kenemans JL, Bekker EM, Lijffijt M, Overtom CCE, Jonkman LM and Verbaten MN (2005) Attention deficit and impulsivity: selecting, shifting, and stopping. *International Journal of Psychophysiology* **58**, 59–70.
- Lakes KD, Swanson JM and Riggs M (2012) The reliability and validity of the English and Spanish strengths and weaknesses of ADHD and normal behavior rating scales in a preschool sample: continuum measures of hyperactivity and inattention. *Journal of Attention Disorders* **16**, 510–516.
- Lijffijt M, Kenemans JL, Verbaten MN and van Engeland H (2005) A meta-analytic review of stopping performance in attention-deficit/hyperactivity disorder: deficient inhibitory motor control? *Journal of Abnormal Psychology* **114**, 216–222.
- Lipszyc J and Schachar R (2010) Inhibitory control and psychopathology: a meta-analysis of studies using the stop signal task. *Journal of the International Neuropsychological Society* **16**, 1064–1076.
- Logan GD and Cowan WB (1984) On the ability to inhibit thought and action: a theory of an act of control. *Psychological Review* **91**, 295–327.
- Metin B, Roeyers H, Wiersema JR, van der Meere J and Sonuga-Barke E (2012) A meta-analytic study of event rate effects on go/no-go performance in attention-deficit/hyperactivity disorder. *Biological Psychiatry* **72**, 990–996.
- Monroe SM and Simons AD (1991) Diathesis-stress theories in the context of life stress research: implications for the depressive disorders. *Psychological Bulletin* **110**, 406–425.
- Nambu A, Tokuno H and Takada M (2002) Functional significance of the cortico-subthalamo-pallidal 'hyperdirect' pathway. *Neuroscience Research* **43**, 111–117.
- Nigg JT, Willcutt EG, Doyle AE and Sonuga-Barke EJS (2005) Causal heterogeneity in attention-deficit/hyperactivity disorder: do we need neuropsychologically impaired subtypes? *Biological Psychiatry* **57**, 1224–1230.
- Polderman TJC, Derks EM, Hudziak JJ, Verhulst FC, Posthuma D and Boomsma DI (2007) Across the continuum of attention skills: a twin study of the SWAN ADHD rating scale. *Journal of Child Psychology and Psychiatry, and Allied Disciplines* **48**, 1080–1087.
- Schmider E, Ziegler M, Danay E, Beyer L and Bühner M (2010) Is it really robust? *Methodology* **6**, 147–151.
- Shaffer D, Fisher P, Lucas CP, Dulcan MK and Schwab-Stone ME (2000) NIMH diagnostic interview schedule for children version IV (NIMH DISC-IV): description, differences from previous versions, and reliability of some common diagnoses. *Journal of the American Academy of Child and Adolescent Psychiatry* **39**, 28–38.
- Sonuga-Barke EJS (2002) Psychological heterogeneity in AD/HD – a dual pathway model of behaviour and cognition. *Behavioural Brain Research* **130**, 29–36.
- Sonuga-Barke EJS (2003) The dual pathway model of AD/HD: an elaboration of neuro-developmental characteristics. *Neuroscience & Biobehavioral Reviews* **27**, 593–604.
- Sonuga-Barke EJS (2005) Causal models of attention-deficit/hyperactivity disorder: from common simple deficits to multiple developmental pathways. *Biological Psychiatry* **57**, 1231–1238.
- Sonuga-Barke EJS and Castellanos FX (2007) Spontaneous attentional fluctuations in impaired states and pathological conditions: a neurobiological hypothesis. *Neuroscience and Biobehavioral Reviews* **31**, 977–986.
- Tillman CM, Thorell LB, Brocki KC and Bohlin G (2007) Motor response inhibition and execution in the stop-signal task: development and relation to ADHD behaviors. *Child Neuropsychology* **14**, 42–59.
- Verbruggen F, Aron AR, Stevens MA and Chambers CD (2010) Theta burst stimulation dissociates attention and action updating in human inferior frontal cortex. *Proceedings of the National Academy of Sciences* **107**, 13966–13971.
- Verbruggen F and Logan GD (2008) Response inhibition in the stop-signal paradigm. *Trends in Cognitive Sciences* **12**, 418–424.
- Verbruggen F and Logan GD (2009) Proactive adjustments of response strategies in the stop-signal paradigm. *Journal of Experimental Psychology. Human Perception and Performance* **35**, 835–854.
- Verhulst F, Van Der Ende J and Koot H (1996) *Handleiding voor de CBCL/4-18 (Manual for the CBCL/4-18)*. Rotterdam: Department of Child and Adolescent Psychiatry, Erasmus Academic Medical Center.
- Vink M, Kaldewaij R, Zandbelt BB, Pas P and du Plessis S (2015) The role of stop-signal probability and expectation in proactive inhibition. *The European Journal of Neuroscience* **41**, 1086–1094.
- Willcutt EG, Doyle AE, Nigg JT, Faraone SV and Pennington BF (2005) Validity of the executive function theory of attention-deficit/hyperactivity disorder: a meta-analytic review. *Biological Psychiatry* **57**, 1336–1346.
- Zandbelt BB, Bloemendaal M, Neggers SFW, Kahn RS and Vink M (2013) Expectations and violations: delineating the neural network of proactive inhibitory control. *Human Brain Mapping* **34**, 2015–2024.
- Zandbelt BB, van Buuren M, Kahn RS and Vink M (2011) Reduced proactive inhibition in schizophrenia is related to corticostriatal dysfunction and poor working memory. *Biological Psychiatry* **70**, 1151–1158.
- Zandbelt BB and Vink M (2010) On the role of the striatum in response inhibition. *PLoS ONE* **5**(11), e13848. doi: 10.1371/journal.pone.0013848.