

Star formation in the LMC: gravitational instability and dynamical triggering

You-Hua Chu¹, Robert A. Gruendl¹
and Chao-Chin Yang¹

¹Astronomy Department, University of Illinois, 1002 W. Green Street, Urbana, IL 61801, USA
email: chu@astro.uiuc.edu, gruendl@astro.uiuc.edu, cyang8@astro.uiuc.edu

Abstract. Evidence for triggered star formation is difficult to establish because energy feedback from massive stars tend to erase the interstellar conditions that led to the star formation. Young stellar objects (YSOs) mark sites of *current* star formation whose ambient conditions have not been significantly altered. *Spitzer* observations of the Large Magellanic Cloud (LMC) effectively reveal massive YSOs. The inventory of massive YSOs, in conjunction with surveys of interstellar medium, allows us to examine the conditions for star formation: spontaneous or triggered. We examine the relationship between star formation and gravitational instability on a global scale, and we present evidence of triggered star formation on local scales in the LMC.

Keywords. stars: formation, stars: pre-main-sequence, ISM: evolution, ISM: structure, galaxies: ISM, Magellanic Clouds

1. Introduction

The star formation process is intertwined with the evolution of the interstellar medium (ISM). After the onset of a burst of star formation, massive stars photoionise the ambient ISM into an H II region, and subsequently energize the ambient medium via fast stellar winds and supernova ejecta to form a superbubble. The expansion of H II regions and superbubbles can trigger further star formation. If triggered star formation continues at a high level over an extended period of time, >10 Myr, a kpc-sized supergiant shell may be produced. On the other hand, if a superbubble does not trigger a significant level of star formation, after the O stars have exploded and the remaining stars have dispersed, the superbubble will recombine into an HI shell with no obvious concentration of stars within its boundary.

To illustrate *triggered* star formation, a causal relationship between the prenatal interstellar conditions and the formation of stars need to be convincingly established. Main-sequence and evolved massive stars trace star formation in the past few Myr, but their prenatal interstellar conditions have been significantly altered by the injection of stellar energies. Massive young stellar objects (YSOs), having a short lifetime, trace the current star formation, while their prenatal interstellar conditions are still intact; therefore, massive YSOs and their environment can be used to investigate triggered star formation.

We have chosen the Large Magellanic Cloud (LMC) to investigate the star formation processes because of the following advantages: (1) The LMC is at a small distance, 50 kpc, so that stars can be resolved and the ISM can be mapped with high linear resolution, and it has a nearly face-on orientation so that confusion along the line-of-sight is minimal. (2) The ISM of the LMC has been well mapped – MCELS survey of ionized gas (Smith 1999), ATCA+Parkes survey of the HI gas (Kim *et al.* 2003), and NANTEN survey of molecular gas (Fukui *et al.* 2001). (3) A complete inventory of massive YSOs can be obtained from the *Spitzer* IRAC and MIPS survey of the LMC (Meixner *et al.* 2006).

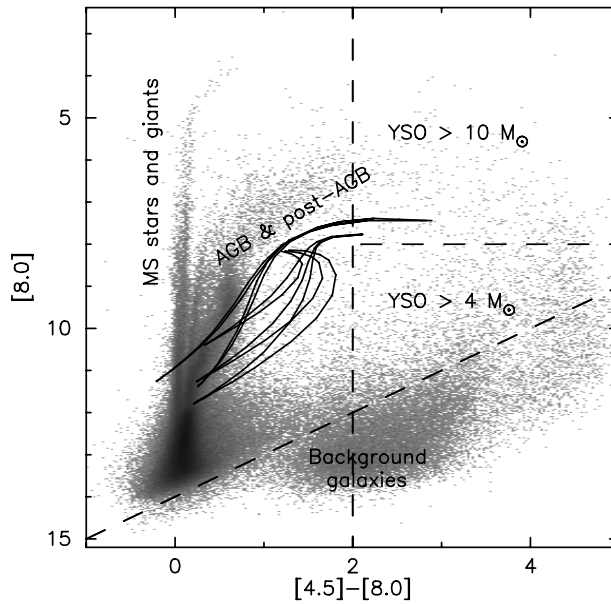


Figure 1. Color-magnitude diagram of all point sources in the LMC. Normal stars are at $[4.5]-[8.0] \sim 0$. The curves illustrate locations of O-rich and C-rich AGB stars from Groenewegen (2006). The vertical dashed line roughly separate normal and AGB stars (to the left) and protostars (to the right). The tilted dashed line marks a rough upper boundary of background galaxies determined from the SWIRE data (Evans *et al.* 2005).

We have identified point sources in the *Spitzer* IRAC and $24\mu\text{m}$ MIPS images and made photometric measurements. Color-color and color-magnitude diagrams are used in conjunction with spectral energy distributions (SEDs) to diagnose YSO candidates from these point sources. Figure 1 shows an example of color-magnitude diagram in the IRAC 4.5 and $8.0\mu\text{m}$ bands. The main-sequence stars and giants have zero colors, $[4.5]-[8.0] \sim 0$. Contaminations of AGB and post-AGB stars and background galaxies can be largely avoided by employing appropriate color or brightness cutoffs (Groenewegen 2006; Evans *et al.* 2005). Known AGB stars and planetary nebulae are removed from the source list. The final YSO candidates are located in the upper right wedge in Figure 1.

While *Spitzer* observations allow us to identify YSOs in the LMC, the angular resolution severely limits our ability to determine the YSOs' physical properties in detail. Figure 2 illustrates this problem in the HII region N11B. The bright source identified at $8\mu\text{m}$ has a SED consistent with a YSO with a substantial envelope. However, a high-resolution $2.1\mu\text{m}$ image taken with the ISPI on the CTIO Blanco 4m telescope shows at least three sources within the point-spread-function of the $8\mu\text{m}$ source; furthermore, a *Hubble Space Telescope* (*HST*) ACS/WFC $\text{H}\alpha$ image shows multiple sources within a dust pillar whose surface is ionized. It is not clear how much nebular emission contributes to the $8\mu\text{m}$ source and whether one or multiple YSOs are present.

The YSOs identified from *Spitzer* observations clearly do not provide unambiguous information about their masses and multiplicity. They are nevertheless excellent markers of sites of current star formation and allow us to examine the star formation process in the LMC both on global and local scales.

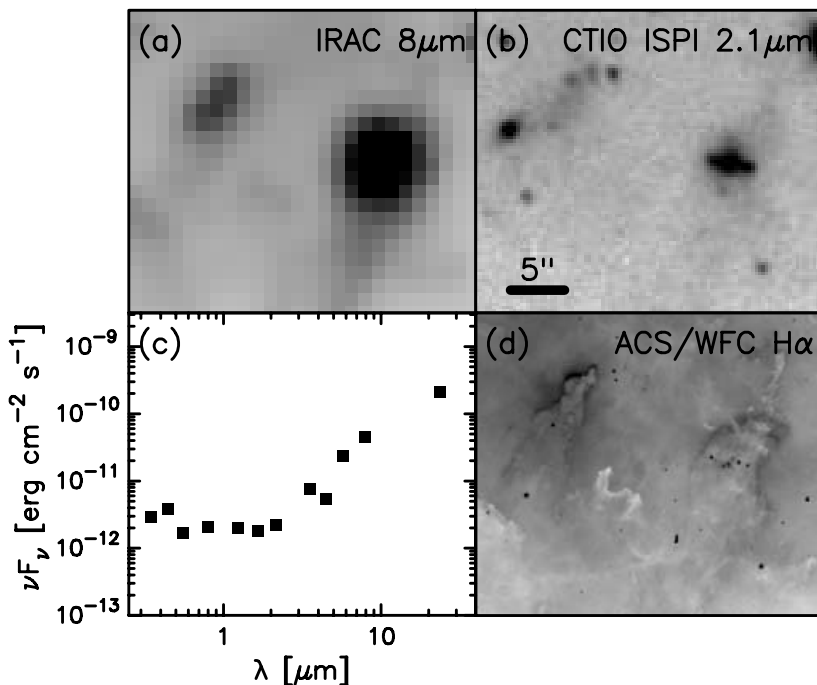


Figure 2. (a) *Spitzer* IRAC 8 μm image of a region in N11B. (b) CTIO Blanco 4m ISPI image of the same region at 2.1 μm . (c) The SED of the brightest source in (a). (d) *HST* ACS/WFC H α image of the same region.

2. Star formation on a global scale

Star formation activity is seen throughout the disk of the LMC. We will examine the relationship between the distribution of star formation and the gravitational instability on a global scale. In the first case, we consider only a thin gaseous disk, and in the second case we add the stellar contribution to the disk.

A thin, differentially rotating gaseous disk is stable to axisymmetric perturbations, if $Q_g \equiv \frac{\kappa c_g}{\pi G \Sigma_g} > 1$, where Σ_g and c_g are the surface density and the sound speed of the gas, and κ is the epicycle frequency (Binney & Tremaine 1987). The total gas surface density map of the LMC (Fig. 3a) is derived from the ATCA+Parkes HI survey by Kim *et al.* (2003) and the NANTEN CO survey by Fukui *et al.* (2001). (The total gas mass is $\sim 6.5 \times 10^8 M_\odot$.) The epicycle frequency as a function of radial distance is calculated from the HI rotation curve (Kim *et al.* 1998). The sound speed of gas is assumed to be 5 km s⁻¹. The resultant gravitational instability map of the LMC is displayed in Figure 3b, where shaded regions are unstable, with $Q_g < 1$, and the darkness of the shade increases with the degree of instability. The *Spitzer* sample of massive YSO candidates are also marked in Figure 3b. It is evident that only about 1/2 of the YSO candidates are located in gravitationally unstable regions.

To add stellar contributions to the gravitational instability, we follow Rafikov's (2001) treatment of a disk galaxy consisting of a collisional gas disk and a collisionless stellar disk. The instability condition becomes

$$\frac{1}{Q_{sg}} \equiv \frac{2}{Q_s} \frac{1}{q} \left[1 - e^{-q^2} I_0(q^2) \right] + \frac{2}{Q_g} \frac{1}{q} R \frac{q}{1 + q^2 R^2} > 1, \quad (2.1)$$

where $Q_s \equiv \frac{\kappa \sigma_s}{\pi G \Sigma_s}$ with Σ_s and σ_s being the surface density and the radial velocity

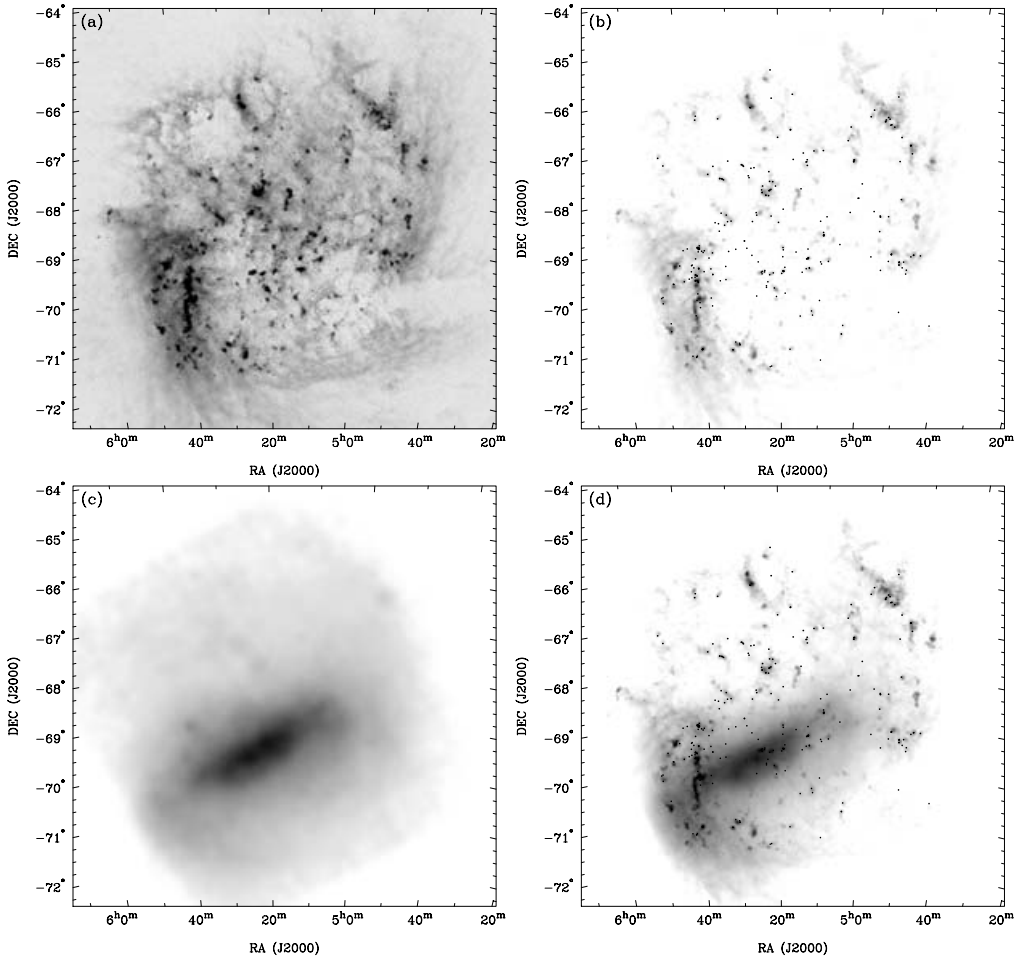


Figure 3. (a) Total gas surface density map of the LMC. (b) The Q_g map. The unstable regions, with $Q_g < 1$, are shaded, and the darkness increases with the degree of instability. YSO candidates are marked. (c) Total stellar surface density map of the LMC, derived from the *Spitzer* 3.6 μm observations. (d) The Q_{sg} map. The unstable regions, with $Q_{sg} < 1$, are shaded, and the darkness increases with the degree of instability. YSO candidates are marked.

dispersion of the stars, I_0 is the Bessel function of order zero, $R \equiv \frac{c_g}{\sigma_s}$, and $q \equiv \frac{k\sigma_s}{\kappa}$ with k being the wavenumber of the axisymmetric perturbations.

To estimate Σ_s , we use a normalized distribution of the 3.6 μm sources detected in the *Spitzer* survey of the LMC (Gruendl *et al.* 2007, in prep) and a total stellar mass of $2 \times 10^9 M_\odot$ (Kim *et al.* 1998). Note that the 3.6 μm point sources, rather than the direct image, are used to avoid the contamination of diffuse emission from dust, and that each source is weighted by its brightness in the calculation. The resulting stellar surface density map is shown in Figure 3c. We adopt a stellar radial velocity dispersion of 15 km s^{-1} , and use the same Q_g described above. Finally, we calculate the value of Q_{sg} at each pixel by finding its global minimum as a function of the wavenumber k (see Eq. 2.1), following the same approach used by Jog (1996) and Rafikov (2001). The resultant gravitational instability map of the LMC is presented in Figure 3d, where shaded regions are unstable, with $Q_{sg} < 1$, and the darkness of the shade increases with the degree of instability. The

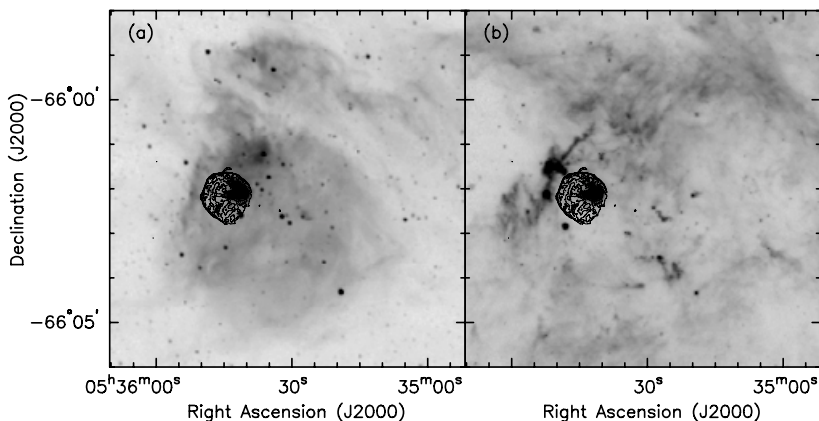


Figure 4. (a) $H\alpha$ image of N63. Overplotted are X-ray contours extracted from *Chandra* observations to show the spatial extent of the young supernova remnant N63A. (b) *Spitzer* IRAC $8\ \mu\text{m}$ image of N63. YSO candidates are detected along the northeastern rim of the H II region. The star formation is triggered by the expansion of the H II region, but the YSOs and their planetary disks will be enriched by the supernova ejecta.

vast majority of the massive YSO candidates are located within gravitationally unstable regions, in sharp contrast to the first case that includes only the gas disk.

From our analysis of the gravitational instability of the LMC, we conclude that the stellar disk's contribution cannot be ignored. More importantly, the current star formation appears to occur mostly in regions that are unstable against perturbation, implying that star formation can be triggered more easily in the gravitationally unstable regions.

3. Star formation on local scales

Triggered star formation is commonly seen in the LMC at various scales. Below we give three such examples.

Star formation triggered by H II region and enriched by supernova ejecta – N63 shown in Figure 4. The H II region N63 is ionized by the OB association LH 83. A young supernova remnant (SNR), N63A, has been identified in the H II region, as delineated by the X-ray emission. *Spitzer* IRAC $8\ \mu\text{m}$ image shows prominent current star formation on the northeastern rim of the H II region, not in contact with the SNR.

Star formation triggered by photo-implosion of dust globules in a superbubble – N51D shown in Figure 5 (Chu *et al.* 2005). Three YSOs projected within the superbubble N51D are found to be coincident with dust globules. The thermal pressure of the warm photoionised gas on the surface of the dust globules is several times higher than those of the hot gas in the superbubble interior and the cold molecular gas in the dust globules, indicating that the dust globules are compressed by their high external pressure raised by photoionisation and the associated heating.

Star formation triggered by collision of interstellar shells – supergiant shells LMC-4 and LMC-5 shown in Figure 6. These two supergiant shells are expanding into each other, and the colliding region shows a bright ridge of HI and molecular clouds. Ongoing, active star formation is seen in the colliding region.

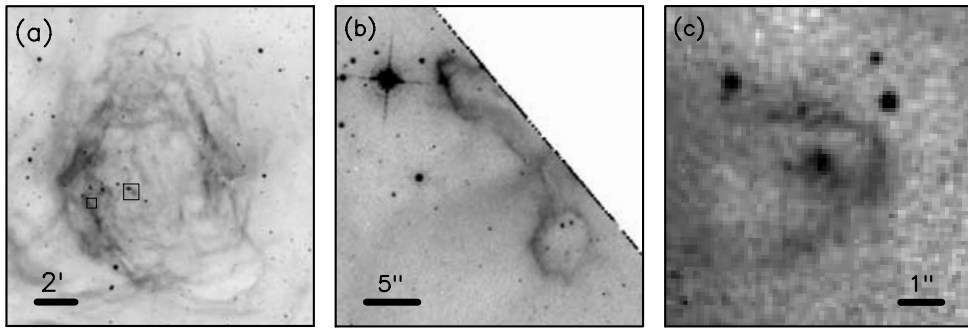


Figure 5. (a) $H\alpha$ image of the superbubble N51D. (b) & (c) *HST* WFPC2 $H\alpha$ images of dust globules that host YSOs. The locations of these fields are marked by the two boxes in (a).

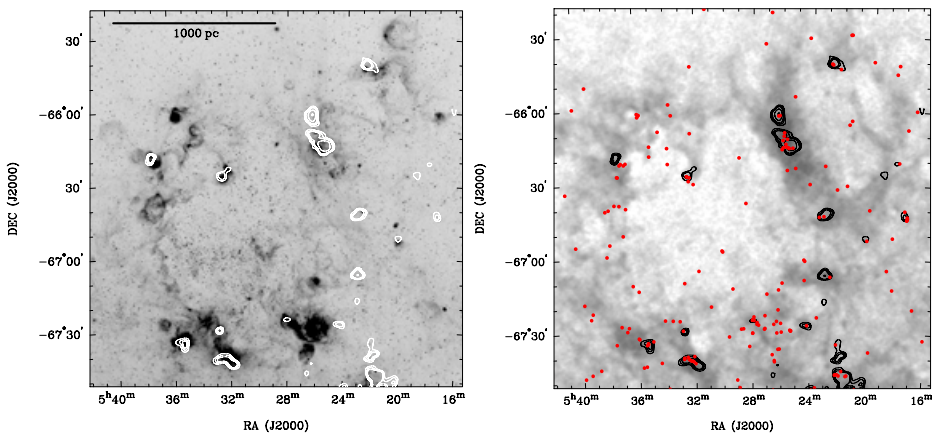


Figure 6. *Left:* $H\alpha$ image of the supergiant shells LMC-4 and LMC-5 superposed with CO contours (Fukui *et al.* 2001). *Right:* ATCA+Parkes HI map of LMC-4 and LMC-5 in gray-scale. Overplotted are CO contours and positions of YSOs. Star formation is enhanced in the collision zone between the two supergiant shells.

4. Conclusions

The LMC is an excellent site to study star formation processes. Our investigation suggests that global-scale gravitational instabilities prepare the conditions for star formation, but dynamical triggering on local scales determines where to set off the star formation and complete the job.

Acknowledgements

This research is supported by the *Spitzer* grant JPL 1264494.

References

- Binney, J. & Tremaine, S. 1987, *Galactic Dynamics* (Princeton University Press)
- Chu, Y.-H., *et al.* 2005, *ApJ* 634, L189
- Evans, N.J. & c2d Team 2005, *AAS Meeting* 207, #95.02
- Fukui, Y., Mizuno, N., Yamaguchi, R., Mizuno, A. & Onishi, T. 2001, *PASJ* 53, L41
- Groenewegen, M.A.T. 2006, *A&A* 448, 181
- Jog, C.J. 1996, *MNRAS* 278, 209
- Kim, S., *et al.* 1998, *ApJ* 503, 674

- Kim, S., *et al.* 2003, *ApJS* 148, 473
Meixner, M., *et al.* 2006, *AJ* 132, 2268
Rafikov, R.R. 2001, *MNRAS* 323, 445
Smith, R.C., *et al.* 1999, *IAU Symposium* 190, p.28

Discussion

DOTTORI: You didn't mention but there is a process of star formation triggered by the bar, which has an $m = 1$ perturbation associated, detected through age groups of star clusters. More local are those related to Shapley constellations.

CHU: The role played by the bar needs to be considered. Our preliminary model did not take into account the spheroidal geometry of the bar. The Shapley constellations are older stellar populations formed a few 10^7 yr ago. The gravitational instability map is a snap shot now.

KRUMHOLZ: Many quantities that affect Q are difficult to determine in external galaxies, e.g., the stellar velocity dispersion. How did you get these?

CHU: The stellar radial velocity dispersion is $\sim 25 \text{ km s}^{-1}$ for the Milky Way. As the LMC is less massive than the Milky Way, we assumed 15 km s^{-1} for the stellar velocity dispersion. We can probe more parameter space later.

ZINNECKER: for clarification: when you say supernova remnants do not trigger star formation (but HII regions do), which stellar masses do you refer to: low mass stars, intermediate mass stars, or high mass stars?

CHU: supernova remnants, when they can be identified as such, are too violent to trigger star formation. For the known supernova remnants that we have examines with Spitzer data, none show any YSOs along their periphery.