




Original Article

Contrast-Induced Encephalopathy and the Blood-Brain Barrier

Mark A. Maclean¹ , Patrick S. Rogers³ , Jamil H. Muradov², Gwynedd E. Pickett¹ , Alon Friedman², Adrienne Weeks¹, Ryan Greene¹ and David Volders³

¹Division of Neurosurgery, Department of Surgery, Dalhousie University, Halifax, NS, Canada, ²Department of Medical Neuroscience, Faculty of Medicine, Dalhousie University, Halifax, NS, Canada and ³Department of Diagnostic Radiology, Faculty of Medicine, Dalhousie University, Halifax, NS, Canada

ABSTRACT: Background: Contrast-induced encephalopathy (CIE) is an adverse event associated with diagnostic and therapeutic endovascular procedures. Decades of animal and human research support a mechanistic role for pathological blood-brain barrier dysfunction (BBBd). Here, we describe an institutional case series and review the literature supporting a mechanistic role for BBBd in CIE. **Methods:** A literature review was conducted by searching MEDLINE, Web of Science, Embase, CINAHL and Cochrane databases from inception to January 31, 2022. We searched our institutional neurovascular database for cases of CIE following endovascular treatment of cerebrovascular disease during a 6-month period. Informed consent was obtained in all cases. **Results:** Review of the literature revealed risk factors for BBBd and CIE, including microvascular disease, pathological neuroinflammation, severe procedural hypertension, iodinated contrast load and altered cerebral blood flow dynamics. In our institutional series, 6 of 52 (11.5%) of patients undergoing therapeutic neuroendovascular procedures developed CIE during the study period. Four patients were treated for ischemic stroke and two patients for recurrent cerebral aneurysms. Mechanical stenting or thrombectomy were utilized in all cases. **Conclusion:** In this institutional case series and literature review of animal and human data, we identified numerous shared risk factors for CIE and BBBd, including microvascular disease, increased procedure length, large contrast volumes, severe intraoperative hypertension and use of mechanical devices that may induce iatrogenic endothelial injury.

RÉSUMÉ : L'encéphalopathie provoquée par les produits de contraste et la barrière hémato-encéphalique *Contexte :* L'encéphalopathie induite par les produits de contraste (EIPC) est un événement indésirable associé aux procédures endovasculaires diagnostiques et thérapeutiques. À cet égard, des décennies de recherche animale et humaine soutiennent qu'il existe un rôle mécaniste en lien avec le dysfonctionnement pathologique de la barrière hémato-encéphalique (BHE). Nous voulons décrire ici une série de cas survenus dans des établissements de santé et passer en revue la littérature qui soutient le rôle mécaniste de la BHE en ce qui regarde l'EIPC. *Méthodes :* Une analyse de la littérature a été effectuée en consultant les bases de données MEDLINE, Web of Science, Embase, CINAHL et Cochrane depuis le début de cette étude jusqu'au 31 janvier 2022. Nous avons aussi effectué une recherche dans une base de données neurovasculaires intra-établissement pour identifier les cas d'EIPC survenus à la suite d'un traitement endovasculaire d'une maladie cérébrovasculaire, et ce, au cours d'une période de six mois. À noter que le consentement éclairé a été obtenu dans tous les cas. *Résultats :* L'examen de la littérature a révélé des facteurs de risque à la fois pour la BHE et l'EIPC, notamment la maladie microvasculaire, la neuro-inflammation pathologique, l'hypertension procédurale sévère, la charge de contraste iodée et l'altération de la dynamique du flux sanguin cérébral. Dans notre échantillon intra-établissement de patients, 6 des 52 (11,5 %) patients ayant subi des procédures thérapeutiques neuro-endovasculaires ont développé une EIPC au cours de la période d'étude. De plus, 4 patients ont été traités pour un AVC ischémique et deux d'entre eux pour des anévrismes cérébraux récurrents. Précisons qu'une endoprothèse mécanique ou une thrombectomie ont été utilisées dans tous les cas. *Conclusion :* Dans notre échantillon intra-établissement de patients et dans notre analyse documentaire de données animales et humaines, nous avons ainsi identifié de nombreux facteurs de risque communs pour l'EIPC et la BHE, y compris la maladie microvasculaire, la durée accrue de l'intervention, les volumes de contraste importants, l'hypertension intra-opératoire sévère et l'utilisation de dispositifs mécaniques qui peuvent induire des lésions endothéliales iatrogènes.

Keywords: Angiography; blood-brain barrier; cerebrovascular; contrast; encephalopathy; endovascular; stroke

(Received 12 December 2023; final revisions submitted 8 February 2024; date of acceptance 1 March 2024; First Published online 8 March 2024)

Corresponding author: Mark A. Maclean; Email: mark.maclean@dal.ca

Cite this article: Maclean MA, Rogers PS, Muradov JH, Pickett GE, Friedman A, Weeks A, Greene R, and Volders D. (2025) Contrast-Induced Encephalopathy and the Blood-Brain Barrier. *The Canadian Journal of Neurological Sciences* 52: 85–94, <https://doi.org/10.1017/cjn.2024.38>

© The Author(s), 2024. Published by Cambridge University Press on behalf of Canadian Neurological Sciences Federation. This is an Open Access article, distributed under the terms of the Creative Commons Attribution licence (<http://creativecommons.org/licenses/by/4.0/>), which permits unrestricted re-use, distribution and reproduction, provided the original article is properly cited.

Introduction

Contrast-induced encephalopathy (CIE) is an adverse event associated with contrast administration during diagnostic and therapeutic endovascular procedures. The spectrum of clinical presentation includes altered level of consciousness (LOC), hemiparesis, cortical blindness, neglect, speech dysfunction, seizures and coma.¹⁻⁴ Symptomatology reflects brain regions affected by the contrast extravasation.⁵ Characteristic radiographic findings include cortical contrast enhancement and vasogenic edema.^{1,6} CIE often develops within hours; clinical and radiographic resolution varies from hours to days. Among patients undergoing neuroendovascular procedures, CIE has been associated with poor disability scores at 3 months compared to patients who do not develop CIE.⁷

CIE was first reported in the 1970s.⁸ The overall incidence of CIE is estimated to be 2-3% in the context of cerebral angiography.^{5,9} A review identified 48 cases of CIE associated with neuroendovascular procedures, the majority with diagnostic procedures.⁵ Evidence for CIE following endovascular treatment of cerebrovascular disease is sparse and limited to case reports; examples include the endovascular treatment of intracranial aneurysms^{3,9-14} carotid stenosis.^{2,15} To our knowledge, only 9 prior cases of CIE have been reported following endovascular thrombectomy (EVT) for acute ischemic stroke (AIS).^{7,16,17}

The blood-brain barrier (BBB) typically prevents iodinated contrast medium in circulating blood from crossing into both the cerebrospinal fluid and extracellular fluid of the central nervous system. Animal and human data support a mechanistic role for blood-brain barrier dysfunction (BBBd) in CIE.^{13,18-20} Preexisting microvascular dysfunction is a risk factor for both CIE,^{5,7,16,17} and BBBd;²¹⁻²⁷ examples include advanced age, hypertension (HTN), smoking history, diabetes mellitus (DM), chronic kidney disease (CKD) and prior stroke. Intuitively, these factors often reflect the underlying vascular pathology that prompted the endovascular intervention.²⁸ Procedural factors, including intraoperative HTN, contrast osmolality and volume have been investigated for their role in both BBBd and CIE.^{1,13,18,20,22,29}

The demand for endovascular therapy in patients with cerebrovascular disease has grown in light of expanding indications, technological advancements and an aging demographic.^{30,31} Further research should clarify risk factors, improve symptom recognition and optimize treatment for CIE. Given this, we sought to: (1) describe our recent institutional experience with CIE following treatment of cerebrovascular disease; and (2) discuss animal and human literature supporting a mechanistic role for BBBd.

Methods

Patient selection

A recent, severe case of CIE prompted us to search our institutional neurovascular database for instances of CIE following treatment of cerebrovascular disease during the period spanning August 1st, 2020, to January 31, 2021. This study was conducted in accordance with institutional guidelines and regulations and ethics approval was not required given the following: (1) informed consent was directly obtained from all subjects and/or their legal guardian(s); (2) no prospective experimentation was performed; (3) all procedures were completed as part of routine standard of clinical care; and (4) reporting adheres to the CARE guidelines for reporting of case series.³²

Diagnosis of CIE

We defined CIE in keeping with prior literature:^{5,7} (1) diagnostic or therapeutic endovascular procedure performed ≤ 24 hours before clinical presentation; (2) unequivocal neurological deterioration or delayed improvement after therapeutic endovascular procedure that could not be explained by preexisting ischemic area in the CT perfusion study, recurrent stroke or hemorrhagic transformation; and (3) cranial radiographic imaging performed ≤ 7 days after onset of clinical presentation, demonstrating edematous change extending beyond the infarct core, with contrast staining.

Literature search

A narrative literature review was conducted by searching MEDLINE, Embase, CINAHL and Cochrane Central Register of Controlled Trials from inception to January 31st, 2022. Keywords searched were relevant to contrast encephalopathy and the BBB (Supplemental Information A). Animal and human studies of any methodological design were included if they examined the role of BBBd in the context of either CIE or endovascular administration of iodinated contrast. Reference lists of included articles were reviewed. Literature search results were reviewed and two authors (MM and JM) independently screened abstracts for study inclusion. We extracted article data pertaining to citation, publication year, type of study (animal, human), number of patients (if applicable), study methodology and study findings.

Data extraction and study outcome measures

Institutional case series data extracted pertained to demographics, relevant medical comorbidities, history of prior cranial or endovascular surgery, procedural variables (e.g. operative duration, contrast media type and volume, vessel(s) affected, ASPECTS and NIHSS scores), pre and postoperative symptoms, pre and postoperative radiographic findings (including brain region and laterality, presence of cerebral edema or contrast staining and time to resolution) and CIE-related treatments.

Statistical methods

Descriptive analysis was performed using extracted patient data. Both the Mann-Whitney *U* test, as well as Fisher's exact test were performed using SPSS Version 27 (IBM Corp, Armonk, New York, USA). Significance was observed at $p < 0.05$.

Institutional series results

Baseline patient characteristics

Six of 52 patients (11.5%) developed CIE following endovascular surgery for cerebrovascular disease (Table 1). Median patient age was 65.6 years (range 41-90). Half were female. Median BMI was 28.5 kg/m² (range 22-41). All patients had risk factors for microvascular disease, including HTN ($n = 6$), dyslipidemia ($n = 5$), CKD ($n = 5$), prior ischemic stroke ($n = 3$), connective tissue disorders ($n = 2$; polycystic kidney disease and fibromuscular dysplasia, respectively) and prior open cranial or neuroendovascular surgery ($n = 2$). Both patients presenting with recurrent intracranial aneurysms had a history of aneurysmal subarachnoid hemorrhage ($n = 2$). Patients' median preoperative serum creatinine was 76 $\mu\text{mol/L}$ (range 70-130). Estimated glomerular filtration rate ranged between 39 and 104 (mL/min/1.73m²), corresponding to CKD stages 1-3b (Table 1). No

Table 1. Baseline patient characteristics

Case No.	Demographics				Medical and neurological comorbidities					Procedural history			Biochemical				
	Age	Sex	BMI	Smoker	HTN	DLP	DM	Afib	IHD	CTD	Prior brain injury	Prior stroke	Prior cranial surgery	Prior endovascular surgery	sCr	EGFR (MDRD)	CKD stage
1	41	M	25.8	N	Y	N	N	N	N	N	Hx aneurysm rupture (SAH)	Lt hemisphere thromboembolic	N	Multiple flow diversion stents and coiling for Lt supraclinoid blister aneurysm	72	104	1
2	54	F	41	N	Y	N	N	N	PCKD	N	Hx aneurysm rupture (SAH)	Right hemisphere iatrogenic (surgery)	Bilateral MCA aneurysm clipping	Coiling ruptured Lt MCA aneurysm	130	39	3b
3	63	F	33	N	Y	Y	Y	Y	N	FMD	N	N	N	N	70	78	2
4	68	M	22	N	Y	Y	N	N	N	N	N	N	N	N	76	88	2
5	87	M	26	Quit	Y	N	N	N	N	N	N	N	N	N	98	62	2
6	90	F	31	N	Y	N	Y	Y	N	N	Left hemisphere atherosclerotic	N	N	N	114	44	3b

Afib = atrial fibrillation; BMI = body mass index in mg/kg²; CKD = chronic kidney disease; CTD = connective tissue disorder; DLP = dyslipidemia; Endovasc = endovascular; EGFR = estimated glomerular filtration rate in ml/min/1.73m²; HTN = hypertension; F = female; FMD = fibromuscular dysplasia; IHD = ischemic heart disease; Lt = left; M = male; PCKD = polycystic kidney disease; PComm = posterior communicating artery; RF = risk factor; Rt = right; SAH = subarachnoid hemorrhage; sCr = serum creatinine in micromole/L.

statistical differences were observed for either demographic or clinical tests (Supplemental Material B).

Perioperative diagnostic and procedural data

Patients received elective neuroendovascular surgery for recurrent unruptured intracranial aneurysms (n = 2), and urgent intervention for AIS (n = 4) (Table 2; Supplemental Material C-F). All patients receiving EVT for stroke received intravenous tissue plasminogen activator (tPA) preoperatively. Among the 4 patients treated for AIS, collateral circulation was good (n = 3) or fair (n = 1), ASPECTS scores were 10 (n = 4), and NIHSS scores were 10 (n = 3) or 15 (n = 1). AIS diagnoses and treatment included: (1) thromboembolic stroke with complete occlusion of the proximal internal carotid artery (ICA), treated with stent retrieval and aspiration; (2) thromboembolism of the M2 segment of the left middle cerebral artery (MCA) treated with stent retrieval and aspiration; (3) ICA thromboembolism accompanied by large artery atherosclerosis, treated with stenting alone; and (4) tandem occlusion of right ICA and M1 segment of the right MCA (n = 1) treated with stenting and angioplasty.

Procedural details are described in Table 2. All patients underwent anterior circulation procedures; vessels affected included internal carotid artery (ICA) (n = 3), middle cerebral artery (MCA) (n = 3) or both (n = 1). Temporary stents placed in intracranial vessels during AIS procedures were retrieved (n = 2). Extracranial stents placed were permanent (n = 2). Median operative duration and fluoroscopy time were 167.5 minutes (range 110–800) and 41.6 minutes (range 14.2–208.9), respectively. All patients received nonionic, iodinated contrast (Iohexol, Omnipaque). The median volume of contrast delivered was 270 mL (range 70–580). All 6 patients experienced severe arterial HTN (peak systolic pressure >180 mmHg) intraprocedurally (Table 2). Thrombolysis in Cerebral Infarction (TICI) scores for patients who underwent EVT were TICI 2c (n = 1) and TICI 3 (n = 2).

Postoperative clinical, treatment and radiological data

Clinical symptoms and signs associated with CIE are detailed in Table 3. Patients experienced postoperative decreased LOC (n = 6), lateralizing motor deficit (n = 6), dysphasia or aphasia (n = 5), hemiparesis progressing to hemiplegia (n = 4), ipsilateral facial droop (n = 4), neglect (n = 2), dysphagia (n = 1) and tremor (n = 1). Median time from procedure to onset of CIE-associated symptoms was 45 minutes (range 15–165). Both patients treated for intracranial aneurysms were neurologically intact preoperatively and made a complete clinical recovery. Patients (n = 2 of 3 for whom data were available) treated for AIS had preoperative neurological deficits which progressed postoperatively and did not fully recover. Two of 3 patients for whom data were available had an elevated serum osmolality postoperatively. Time to resolution of symptoms ranged from 1 hour to 7 days. CIE-directed treatments are detailed in Table 3.

Radiological findings associated with CIE are described in Table 3. Effacement of the cortical sulci, cortical or subarachnoid contrast enhancement and parenchymal edema were observed in all patients (Figs. 1 and 2; Supplemental Material C-F). In patients (n = 5) who had follow-up imaging, complete (n = 3) or partial (n = 2) radiographic resolution of contrast extravasation was observed.

Table 2. Perioperative diagnostic and procedural data for patients undergoing endovascular therapy for cerebrovascular disease

Case No.	Dx	Diagnostic							Procedural										
		Stroke subtype	Pre-op ICH	Vessel(s) Affected	Collaterals	ASPECTS	NIHSS	Tandem Occln	Pre-op IV tPA	Procedure type	OR Dur'n (mins)	Circulation accessed	BP (mmHg) induction; intra-op high; intra-op low	Contrast Vol (mL)	Fluoro Time (mins)	Air kerma (mGy)	DAP (Gy*m ²)	Recanalization result	
1	Recurrent aneurysm	N/A	N	Lt ICA	N/A	N/A	N/A	N	N	FD stent/coiling (ICA) + stenting iatrogenic dissection (VA)	800	Ant/Post	180/100; 130/80; 80/40	580	209	7880	50,043	N/A	
2	Recurrent aneurysm	N/A	N	Lt MCA	N/A	N/A	N/A	N	N	Stent-assisted coiling	340	Ant	130/90; 200/75; 75/50	314	72	3528	24,237	N/A	
3	Stroke	TE	N	Rt ICA	Good	10	10	N	Y	EVT	122	Ant	180/75; 200/95; 150/75	210	27	1447	12,927	TICI 3	
4	Stroke	TE/LAS	N	1) Rt ICA 2) Rt MCA	Good	10	10	Y	Y	1) Stenting and angioplasty (ICA) 2) EVT (MCA)	140	Ant	180/100; 150/90; 60/40	240	23	1318	17,334	TICI 2C	
5	Stroke	LAS	N	Rt ICA	Fair	10	15	N	N	Stenting (ICA)	195	Ant	220/90; 180/75; 125/75	300	57	884	17,974	N/A	
6	Stroke	TE	N	Lt MCA	Good	10	10	N	Y	EVT (MCA)	110	Ant	195/100; 215/100; 125/50	70	14	NR	NR	TICI 3	

Ant = anterior; Dur'n = duration; DAP = dose area product; EVT = endovascular thrombectomy; FD = flow diversion; Fluoro = fluoroscopy; ICA = internal carotid artery; LAS = large artery atherosclerosis; MCA = middle cerebral artery; mins = minutes; N = no; N/A = not applicable; NIHSS = National Institutes of Health Stroke Scale; Occln = occlusion; OR = operative; P = posterior; TE = thromboembolic; TICI = thrombolysis in cerebral infarction; tPa = tissue plasminogen activator; VA = vertebral artery; Vol = volume; Y = yes.

Table 3. Postoperative clinical, treatment and radiological data for patients with contrast-induced encephalopathy following endovascular therapy for cerebrovascular disease

Case No.	Clinical presentation						Radiological findings				Treatment
	Pre-op deficits	acuity	Post-op deficit	Time to Sx onset (mins)	Complete resolution	Time to resolution	CIE-related postoperative imaging findings	Brain region	Side	Time to radiographic resolution*	Type
1	None	Elective	1) Decreased LOC 2) Rt arm weakness/tremor 3) aphasia 4) Rt facial droop	140	Y	1) 48h 2, 3) 5d	1) Effaced cortical sulci 2) Cortical/subarachnoid contrast enhancement 3) parenchymal edema 3) Embolic infarcts	F/T/P	Lt	Complete resolution: 55h	1) Steroids 2) IVF 3) Rx of hypocalcemia
2	None	Elective	1) Decreased LOC 2) Rt hemiparesia	70	Y	1) 1h 2) 27h	1) Effaced cortical sulci 2) Parenchymal edema 3) Cortical/subarachnoid contrast enhancement	F/T/P	Lt	No F/U Imaging	1) Steroids 2) IVF 3) Intubation 4) Rx of HTN
3	Lt hemiparesia	Emergent	1) Decreased LOC 2) Dysarthria 3) Lt facial droop 4) Lt hemiparesia	15	Y	44h	1) Effaced cortical sulci 2) Parenchymal edema 3) Cortical/subarachnoid contrast enhancement	F/T/P	Rt	Partial resolution: 14h	1) Anti-convulsant 2) Rx of HTN
4	Dysarthria; Lt facial droop Lt hemiparesia Lt hemianopia	Emergent	1) Decreased LOC 2) Lt hemiplegia 3) Lt neglect 4) Cognitive impairment 5) Dysphasia 6) Lt facial droop	20	1, 5) Y 2, 3, 4, 6) N	1, 2, 5) 48h 3) 7d 4) N/A 6) Unk	1) Effaced cortical sulci 2) Parenchymal edema 3) Cortical/subarachnoid contrast enhancement	F/T/P	Rt	Complete resolution: 24h	None
5	Dysarthria Lt facial droop Lt neglect Lt hemiparesia Lt gaze palsy	Emergent	1) Decreased LOC 2) Lt hemiplegia 3) Lt neglect 4) Dysphasia/dysphagia 5) Lt facial droop	165	1-5) N	N/A	1) Effaced cortical sulci 2) Parenchymal edema 3) Cortical/subarachnoid contrast enhancement	F/T/P	Rt	Complete resolution: 36h	None

(Continued)

Table 3. Postoperative clinical, treatment and radiological data for patients with contrast-induced encephalopathy following endovascular therapy for cerebrovascular disease (Continued)

Case No.	Clinical presentation			Radiological findings			Treatment Type
	Pre-op deficits	Post-op deficit	Time to Sx onset (mins)	CIE-related postoperative imaging findings	Brain region	Side	
6	Global aphasia Rt hemianopia Rt facial droop	1) Decreased LOC 2) Right hemiplegia 3) Aphasia	20	1) Effaced cortical sulci 2) Parenchymal edema 3) Cortical/subarachnoid contrast enhancement	P/T/O	Lt	Partial resolution: 18h None

d = day; F = frontal; F/U = follow-up; h = hour; HTN = hypertension; IVF = intravenous fluids; LOC = level of consciousness; Lt = left; MCI = mild cognitive impairment; N = no; N/A = not applicable; Op = operative; P = parietal; Rt = right; Sx = symptom; T = temporal; Unk = unknown; Y = yes.

*Time to radiographic resolution: Time to resolution was recorded from available postoperative imaging. Timing of postoperative imaging was not standardized. In cases of partial resolution, no further imaging was ordered to confirm complete resolution.

Discussion and review of literature

Here, we describe our experience with CIE following neuro-endovascular treatment of cerebrovascular disease. All patients had multiple preexisting risk factors for microvascular disease, underwent long procedures (median 167.5 minutes), received large volumes of contrast (median 270 mL) and experienced severe intraoperative arterial HTN (peak systolic arterial pressure > 180 mmHg). All cases involved use of mechanical devices for stenting or clot extraction, representing a potential risk factor for iatrogenic endothelial injury. Clinical symptoms, radiological findings, CIE-directed treatments and clinical outcomes were similar to those previously reported.^{5,7} Below, we discuss animal and human studies supporting a mechanistic role for BBBd, including: (1) preexisting microvascular dysfunction; (2) neuro-inflammation; (3) iodinated contrast agent volume and concentration; (4) severe procedural HTN; and (5) cerebral blood flow (CBF) dynamics. We hypothesize that these risk factors for BBBd may also increase the risk of CIE.

Clinical risk factors for CIE

We identified demographic similarities between patients in our series (Table 1) and prior reports.⁵ These include risk factors for preexisting microvascular disease, such as advanced age, uncontrolled preoperative arterial HTN, DM and CKD.⁵ Five patients in our series had prior stroke and 2 patients had connective tissue disorders which may predispose patients to pathological neurovascular manifestations.³³ Previously reported risk factors for CIE include CKD, prior stroke, anticoagulant use and heart failure. The association between microvascular disease, ischemic stroke and BBBd is established.^{26,27,34–38} As such, we hypothesize that the aforementioned variables are also risk factors for CIE.

Clinical and radiographic findings associated with CIE

Clinical manifestations of CIE may include encephalopathy (39.6%), cortical blindness (39.6%), motor weakness (37.5%) and decreased LOC (20.8%).⁵ Aphasia, headache, seizures and neglect have also been reported. We identified a similar spectrum of symptoms (Table 3). Decreased LOC was observed in all cases. Symptom onset time was similar to prior reports.⁵

CIE-related radiological findings typically include effacement of cortical sulci (37.5%), parenchymal edema (29.2%), cortical (54.8%) or subarachnoid (22.9%) contrast enhancement.⁵ These findings (Table 3) were also similar to those previously reported.^{5,7}

Prognosis following CIE

Clinical outcomes following CIE vary.^{3,5,9–14,39,40} Following diagnostic procedures, most patients recover clinically and radiographically within days.⁵ While data is sparse, outcomes following intervention for AIS may be less favorable; preoperative neurological deficits were associated with postoperative progression and incomplete clinical recovery. Similarly, Chu et al. reported unfavorable clinical outcomes in 6 of 7 CIE patients treated with EVT for AIS.⁷ No long term data is available for patients with CIE.

BBBd and CIE

The BBB is composed of microvascular endothelial cells, pericytes and astrocytic foot processes.²⁴ Tight junctions bridging endothelial cells and the basement membrane are comprised of

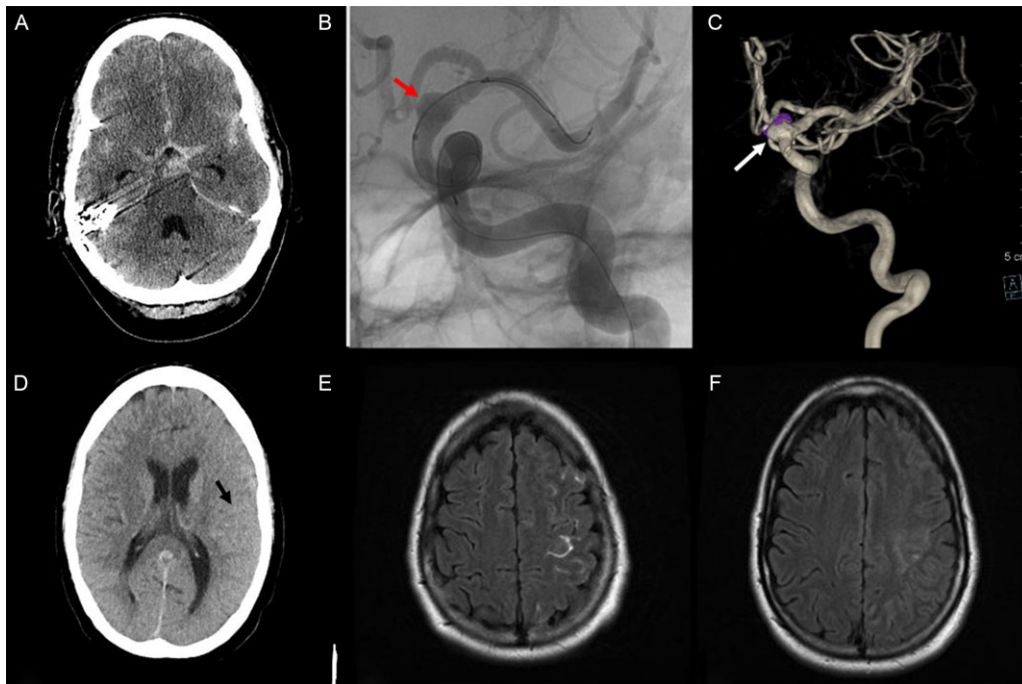


Figure 1. Case 1. (A) Unenhanced axial computed tomography (CT) demonstrates blood filling predominantly the anterior basal cisterns and bilateral sylvian fissures. (B) Oblique view cerebral angiogram, left internal carotid artery (ICA) injection demonstrating blister aneurysm of the supraclinoid segment (red arrow). (C) CT angiography (CTA) reconstructions demonstrate post-treatment blister aneurysm recurrence. (D) Unenhanced CT head following treatment of the aneurysm recurrence shows left hemispheric effacement of the cortical sulci and contrast staining. (E) Axial magnetic resonance imaging (MRI) re-demonstrates the contrast extravasation, focused on the hand knob region of the primary motor cortex. Diffusion-weighted imaging demonstrated embolism related infarction in the same region (not shown). (F) Follow-up MRI at 55 hours post-treatment demonstrates near resolution of contrast extravasation and sulcal effacement.

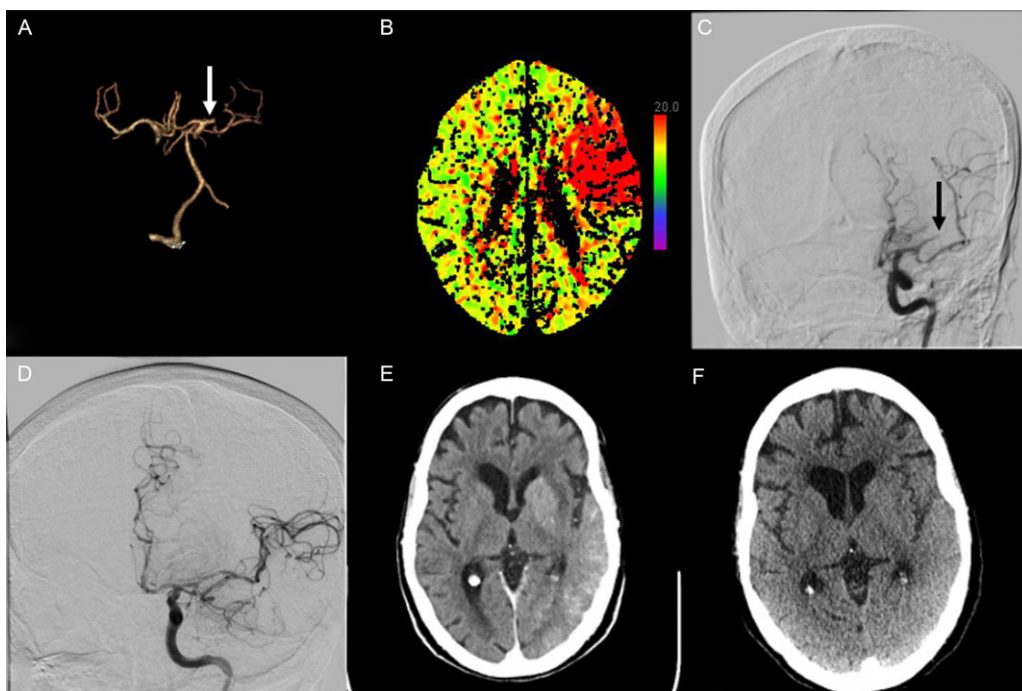


Figure 2. Case 6. (A) CTA 3-dimensional reconstruction demonstrates occlusion of the left MCA (white arrow). (B) CT perfusion demonstrated increased TTP in the left MCA territory. Anterior view of the left ICA injection digital subtraction angiogram pre- (C) and post- (D) EVT, demonstrating TIC1 3 result. (E) Unenhanced CT head demonstrates contrast extravasation over the left temporal, parietal and occipital regions with effaced cortical sulci and parenchymal edema. (F) Repeat CT Head 18 hours later demonstrates resolution. CT = computed tomography; CTA = CT angiography; EVT = endovascular thrombectomy; ICA = internal carotid artery; MCA = middle cerebral artery; TIC1 = Thrombolysis in Cerebral Infarction; TTP = time to peak.

transmembrane (e.g. Claudin and Occludin) and cytoplasmic proteins (e.g. ZO-1); both play an integral role in regulating integrity and permeability of the BBB.²⁰ Several animal and human studies have implicated a mechanistic role for BBBd in CIE. BBBd may underly brain dysfunction and injury, either by direct disruption of brain homeostasis due to serum extravasation into brain neuropil, or indirectly via astroglia activation, endothelial dysfunction and pathological neuroinflammation (e.g. cytokine release). Below, we discuss the association between BBBd, microvascular disease, iodinated contrast medium, intraoperative HTN, neuroinflammation and iatrogenic endothelial injury as risk factors for CIE.

BBBd and iodinated contrast medium

Iodinated contrast agents do not typically cross the BBB. However, both ionic and nonionic iodine contrast media have been associated with CIE. Uchiyama et al. provided direct evidence of high iodinated contrast concentration in the cerebrospinal fluid of a patient with CIE, compared to controls.¹³ The mechanism of contrast extravasation is likely multifactorial. Iodinated contrast agents have been shown to reduce expression of endothelial tight junction proteins.²⁰ BBBd may also be related to a chemo-toxic effect of contrast on cerebral microvasculature,^{41–43} particularly in the setting of slow CBF with prolonged contact of contrast on the endothelium.^{13,29,42} Alternatively, BBBd has been associated with iodinated contrast osmolality and volume.²⁹ Contrast hyperosmolality may induce BBBd by drawing water out of endothelial cells, with resultant cell shrinkage and separation of tight junctions.¹³ To this end, Wilson et al. compared mannitol to several nonionic, iodinated contrast agents varying in osmolality. They found that iodinated contrast media delivery resulted in BBBd in rabbits, whereas mannitol did not.¹⁸ These findings suggest that BBBd is not related to contrast osmolality alone and other physical or chemical effects of iodinated contrast, such as viscosity, may alter BBB function.⁵² Lastly, BBBd may also be related to contrast volume.²⁹ The median lethal dose LD₅₀ for commonly used iodinated contrast agents is 10–20 ml/kg.⁴⁴ In our study, high volumes of media delivered, ranging from 210 to 580 mL (i.e. up to 8 mL/kg; approaching the LD₅₀), may have contributed to CIE.

BBBd in AIS: molecular mechanisms

An association between BBBd and cerebral microvascular disease has been demonstrated in animals,^{25,45} and humans.^{21,27,34,36,46,47} In our series, and prior reports of CIE following EVT for AIS,^{5,17} multiple preexisting patient risk factors for microvascular disease were identified. As such, we hypothesize that preoperative microvascular disease is a risk factor for both BBBd and CIE during intervention.

Disruption of pulsatile flow across endothelial cells in the setting of ischemic stroke has numerous pathological implications, including: (a) increased BBBd via decreased expression of tight junction proteins; (b) thrombosis-induced endothelial cell release of proinflammatory cytokines (e.g. TNF- α , IL-1- β); (c) glial cell activation; (d) leukocyte recruitment with local release of cytotoxic molecules; and (e) decreased nitric oxide production by injured endothelial cells, which may compromise autoregulation of the microcirculation, particularly in sensitive penumbra.²⁶

In the context of ischemic stroke, BBBd has also been associated with cortical spreading depolarization (CSD),⁴⁸ seizures,⁴⁹ elevated

levels of glutamate,⁴⁹ proinflammatory cytokines,^{27,38} increased levels of matrix metalloproteinases (MMPs) and neuronal injury.^{20,24,36,37,48} MMPs, including MMP-9, have an established role in modulating BBB function and structure; they degrade tight junction proteins and may induce paracellular leakage.³⁷ MMPs are upregulated in response to acquired brain injury and play a role in the neuroinflammatory response.⁵⁰ CSDs are common following AIS,⁵¹ trigger the release of MMPs,⁵² result in BBB breakdown,⁵³ upregulate proinflammatory cytokines,⁵⁴ and contribute to ischemic lesion progression.⁵⁵ While these factors may contribute to CIE following AIS, the extent of subarachnoid contrast extravasation among our cases suggest other mechanisms may also be involved.

Blood-brain barrier dysfunction in acute ischemic stroke: cerebral blood flow dynamics and iatrogenic endothelial injury

Endothelial cell damage may result from iatrogenic mechanical trauma, altered CBF dynamics or reperfusion injury. Mechanical endovascular stenting or clot extraction may induce device-specific iatrogenic endothelial trauma following treatment of AIS in animals.^{56,57} The use of such devices is increasing, particularly among the aging population, at longer time intervals since the onset of symptoms, with the goal of rapid and complete revascularization.^{30,31} These factors may potentially increase the likelihood of vessel perforation, contrast extravasation and subarchnoid hemorrhage. *In vitro* and *in vivo* studies provide valuable insight regarding the pattern and degree of endothelial injury inflicted, based on device size and shape.²⁶ Furthermore, endothelial cell injury may vary based on vessel diameter, with greater endothelial cell injury in smaller vessels, emphasizing the important of appropriately matching device size based on vessel dimensions.²⁶ These findings highlight the importance of laboratory studies in an effort to design novel technologies with the goal of minimizing endothelial trauma, thereby preventing BBBd, neuroinflammation and secondary neuronal injury.²⁶

In our series, all patients experienced intraoperative arterial HTN (Table 2). We propose that severe intraoperative HTN, particularly in the setting of preexisting cerebrovascular disease, is a risk factor for BBBd and CIE. Aguirre et al., reported a case of CIE with severe intraoperative arterial HTN during EVT, in a patient with multiple risk factors for microvascular disease.¹⁷ Whisson et. al., induced arterial HTN (190 mmHg peak systolic pressure) during carotid angiography in rodents and reported an association with increased BBBd.⁵⁸ While it is standard to address intra-procedural blood pressure optimization and be mindful of contrast volume administered, our cases highlight the occurrence of these variables among patients with CIE.

All our patients with AIS had restoration of CBF to the affected vascular territory. A mechanism analogous to cerebral hyperperfusion syndrome (CHS) may have facilitated CIE, as both ischemia and reperfusion injury are known to induce BBBd. BBBd has been documented in animal models of cerebral hyperperfusion,^{22,38,59} as well as a clinical case.⁵⁹ The perfusion pressure breakthrough threshold in chronically ischemic brains is decreased in the setting of new ischemic insults and HTN, both resulting in BBBd.²² Reperfusion of ischemic brain regions may contribute to BBBd and CIE via mechanisms related to impaired autoregulation such as those observed with CHS.

Long procedures could potentially result in downstream ischemia, leading to BBBd and secondary CIE, particularly if a

support platform is in place for a prolonged period and occlusive in a vessel. In our long cases, however, no contrast stasis was noticed during the injections, indicating a nonocclusive guiding catheter position in the neck vessels. Operative durations in the EVT cases were all under 200 minutes.

Future avenues for research: BBB imaging and CIE-directed therapies

A future cohort study would provide the opportunity for more comprehensive multi-variate analysis. The inclusion of a control group in future studies may allow for analyses assessing variables predictive of CIE. Dynamic-contrast enhanced MRI (DCE-MRI) has been used to describe the extent and localization of BBBd in patients with neurological conditions, including TIA and stroke.^{34,60} DCE-MRI may be useful for the diagnostic work-up of patients with suspected CIE and serve as a biomarker for measuring CIE-directed treatment efficacy.

Previously described CIE-directed therapies include corticosteroids, vigorous hydration and blood pressure optimization.⁵ In the absence of standardized guidelines for the treatment of CIE, these options are reasonable supportive adjuncts. Airway protection, anticonvulsants and hyperosmolar therapy may be considered on an as needed basis. The optimal duration and intensity of such therapies warrant further study. The utility of such therapies likely depends on timely diagnosis and education around CIE, which may improve diagnostic recognition and facilitate early treatment.

Future studies may explore therapies for CIE that target pathological mechanisms underlying BBBd. These may include inhibition of proinflammatory cytokines, CSDs or MMP release. Inhibition using IL-1-receptor antagonists has been shown to attenuate brain damage induced by stroke,⁶¹ whereas inhibition of MMP-9 activity prevents cytokine maturation and reduces ischemic brain volume.³⁸ Lastly, CSDs are associated with massive release of glutamate and increased BBBd.⁵³ NMDA-receptor antagonism has been shown to inhibit CSD,^{62,63} reduce BBBd,⁴⁹ and improve neuronal recovery following CSD in peri-infarct brain tissue.⁶⁴

Limitations

Given the small sample size, the analysis is limited to univariate, nonparametric comparisons. As described above, our future work includes conducting a cohort study with a control group to elicit pre- and peri-operative variables predictive of developing CIE. The time course for obtaining postoperative radiographic imaging was nonstandardized and driven by findings on neurological assessment in this retrospective series. This reflects lack of wide-spread consensus on the definition of CIE and absence of guidelines pertaining to the work-up and management.

Conclusion

Here, we describe our institutional experience with CIE following endovascular surgery for cerebrovascular disease. Prior animal and human data support a mechanistic role for BBBd in CIE. Risk factors for BBBd may increase the risk of CIE. These include preexisting microvascular pathology, neuroinflammation and altered CBF dynamics, and procedural variables such as intra-operative arterial HTN, contrast concentration and the use of endovascular devices for stenting or clot extraction that may

induce mechanical endothelial injury. Aggressive control of risk factors for microvascular disease, including arterial blood pressure control, may reduce the risk of CIE.

Supplementary material. The supplementary material for this article can be found at <https://doi.org/10.1017/cjn.2024.38>.

Data availability statement. All data utilized is provided herein and available on request from the corresponding author Dr. Mark A. MacLean (mark.maclea@dal.ca).

Acknowledgements. None.

Author contributions. All authors contributed to conceptualization; MM, GP, AW, PR, and DV participated in data collection; MM, JM, and RG performed the data analysis; MM and JM performed the literature review; all authors contributed to manuscript preparation and reviewed the manuscript for integrity and accuracy.

Funding statement. This study was not funded.

Competing interests. None.

Ethical approval. Consent for study inclusion was obtained directly from each patient and/or their substitute decision makers.

Consent. All authors consent to publication.

References

1. Yu J, Dangas G. New insights into the risk factors of contrast-induced encephalopathy. *J Endovasc Ther.* 2011;18:545–6.
2. Dangas G, Monsein LH, Laureno R, et al. Transient contrast encephalopathy after carotid artery stenting. *J Endovasc Ther.* 2001;8:111–3.
3. Guimaraens L, Vivas E, Fonnegra A, et al. Transient encephalopathy from angiographic contrast: a rare complication in neurointerventional procedures. *Cardiovasc Intervent Radiol.* 2010;33:383–8.
4. May EF, Ling GSF, Geyer CA, Jabbari B. Contrast agent overdose causing brain retention of contrast, seizures, and parkinsonism. *Neurology.* 1993;43:836.
5. Quintas-Neves M, Araújo JM, Xavier SA, et al. Contrast-induced neurotoxicity related to neurological endovascular procedures: a systematic review. *Acta Neurol Belg.* 2020;120:1419–24.
6. Sharp S, Stone J, Beach R. Contrast agent neurotoxicity presenting as subarachnoid hemorrhage. *Neurology.* 1999;52:1503.
7. Chu YT, Lee KP, Chen CH, et al. Contrast-induced encephalopathy after endovascular thrombectomy for acute ischemic stroke. *Stroke.* 2020;51:3756–3759.
8. Fischer-Williams M, Gottschalk PG, Browell JN. Transient cortical blindness: an unusual complication of coronary angiography. *Neurology.* 1970;20:353.
9. Niimi Y, Kupersmith MJ, Ahmad S, Song J, Berenstein A. Cortical blindness, transient and otherwise, associated with detachable coil embolization of intracranial aneurysms. *Am J Neuroradiol.* 2008;29:603–7.
10. Saigal G, Bhatia R, Bhatia S, Wakhloo AK. MR findings of cortical blindness following cerebral angiography: is this entity related to posterior reversible Leukoencephalopathy? *AJNR Am J Neuroradiol.* 2004;25:252–6.
11. Matsubara N, Izumi T, Miyachi S, Ota K, Wakabayashi T. Contrast-induced encephalopathy following embolization of intracranial aneurysms in hemodialysis patients. *Neurol Med Chir.* 2017;57:641–8.
12. Nagamine Y, Hayashi T, Kakehi Y, et al. Contrast-induced encephalopathy after coil embolization of an unruptured internal carotid artery aneurysm. *Intern Med.* 2014;53:2133–8.
13. Uchiyama Y, Abe T, Hirohata M, et al. Blood brain-barrier disruption of nonionic iodinated contrast medium following coil embolization of a ruptured intracerebral aneurysm. *AJNR Am J Neuroradiol.* 1983;2:204:25.
14. Leong S, Fanning NF. Persistent neurological deficit from iodinated contrast encephalopathy following intracranial aneurysm coiling. A case report and review of the literature. *Interv Neuroradiol.* 2012;18:33–41.

15. Fang HY, Kuo YL, Wu CJ. Transient contrast encephalopathy after carotid artery stenting mimicking diffuse subarachnoid hemorrhage: a case report. *Catheter Cardiovasc Interv.* 2009;73:123–6.
16. Bakradze E, Pasquale D, Kirchoff-Torres K. Contrast induced encephalopathy mimicking reperfusion injury (P3.285). *Neurology.* 2017;88:3.285.
17. Aguirre C, Trillo S, Ximénez-Carrillo Á., Vivancos J. Contrast-induced encephalopathy possibly secondary to endothelial damage after successful mechanical thrombectomy. *Neurologia.* 2020;35:336–8.
18. Wilson AJ, Evill CA, Sage MR. Effects of nonionic contrast media on the blood-brain barrier. Osmolality versus chemotoxicity. *Invest Radiol.* 1991;26:1091–4.
19. Bar-Klein G, Cacheaux LP, Kamintsky L, et al. Losartan prevents acquired epilepsy via TGF- β signaling suppression. *Ann Neurol.* 2014;75:864–75.
20. Wang H, Li T, Zhao L, et al. Dynamic effects of Ioversol on the permeability of the blood-brain barrier and the expression of ZO-1/Occludin in rats. *J Mol Neurosci.* 2019;68:295–303.
21. Bowman GL, Kaye JA, Quinn JF. Dyslipidemia and blood-brain barrier integrity in Alzheimer's disease. *Curr Gerontol Geriatr Res.* 2012;2012:1–5.
22. Sakaki T, Tsujimoto S, Nishitani M, Ishida Y, Morimoto T. Perfusion pressure breakthrough threshold of cerebral autoregulation in the chronically ischemic brain: an experimental study in cats. *J Neurosurg.* 1992;76:478–85.
23. Bogush M, Heldt NA, Persidsky Y. Blood brain barrier injury in diabetes: unrecognized effects on brain and cognition. *J Neuroimmune Pharmacol.* 2017;12:593–601.
24. MacLean MA, Kamintsky L, Leck ED, Friedman A. The potential role of microvascular pathology in the neurological manifestations of coronavirus infection. *Fluids Barriers CNS.* 2020;17:55.
25. Schoknecht K, Prager O, Vazana U, et al. Monitoring stroke progression: in vivo imaging of cortical perfusion, blood-brain barrier permeability and cellular damage in the rat photothrombosis model. *J Cereb Blood Flow Metab.* 2014;34:1791–1801.
26. Teng D, Pannell JS, Rennert RC, et al. Endothelial trauma from mechanical thrombectomy in acute stroke: in vitro live-cell platform with animal validation. *Stroke.* 2015;46:1099–106.
27. Kassner A, Merali Z. Assessment of blood-brain barrier disruption in stroke. *Stroke.* 2015;46:3310–5.
28. Spina R, Simon N, Markus R, Muller DWM, Kathir K. Contrast-induced encephalopathy following cardiac catheterization. *Catheter Cardiovasc Interv.* 2017;90:257–68.
29. Bassett RC, Rogers JS, Cherry GR, Cruzhit C. The effect of contrast media on the blood-brain-barrier. *J Neurosurg.* 1953;10:38–47.
30. Zaidat OO, Lazzaro M, McGinley E, et al. Demand-supply of neuro-interventionalists for endovascular ischemic stroke therapy. *Neurology.* 2012;79:S35–41.
31. Riina HA. Neuroendovascular surgery. *J Neurosurg.* 2019;131:1690–701.
32. JJ Gagnier, Kienle G, Altman DG, Moher D, Sox H, Riley D, CARE Group. The CARE guidelines: consensus-based clinical case report guideline development. *J Clin Epidemiol.* 2014;67:46–51.
33. Kim ST, Brinjikji W, Lanzino G, Kallmes DF. Neurovascular manifestations of connective-tissue diseases: a review. *Interv Neuroradiol.* 2016;22:624–37.
34. Serlin Y, Ofer J, Ben-Arie G, et al. Blood-brain barrier leakage: a new biomarker in transient ischemic attacks. *Stroke.* 2019;50:1266–9.
35. Lapolover EGG, Lippmann K, Salar S, et al. Peri-infarct blood-brain barrier dysfunction facilitates induction of spreading depolarization associated with epileptiform discharges. *Neurobiol Dis.* 2012;48:495–506.
36. Lakhan SE, Kirchgessner A, Tepper D, Leonard A. Matrix metalloproteinases and blood-brain barrier disruption in acute ischemic stroke. *Front Neurol.* 2013;4:32.
37. Rempe RG, Hartz AMS, Bauer B. Matrix metalloproteinases in the brain and blood-brain barrier: versatile breakers and makers. *J Cereb Blood Flow Metab.* 2016;36:1481–507.
38. Amantea D, Russo R, Gliozzi M, et al. Early upregulation of matrix metalloproteinases following reperfusion triggers neuroinflammatory mediators in brain ischemia in rat. *Int Rev Neurobiol.* 2007;82:149–69.
39. Lantos G. Cortical blindness due to osmotic disruption of the blood-brain barrier by angiographic contrast material. *Neurology.* 1989;39:567.
40. Nakao K, Joshi G, Hirose Y, et al. Rare cases of contrast-induced encephalopathies. *Asian J Neurosurg.* 2020;15:786–793.
41. Salvesen S, Nilsen PL, Holtermann H. Effects of calcium and magnesium ions on the systemic and local toxicities of the N-methyl-glucamine (Meglumine) salt of metrizoic acid (Isopaque). *Acta Radiol Diagn.* 1967;270:180.
42. Horwitz NH, Wener L. Temporary cortical blindness following angiography. *J Neurosurg.* 1974;40:583–6.
43. Chase NE, Kricheff II. The comparison of the complication rates of meglumine iohalamate and sodium diatrizoate in cerebral angiography. *Am J Roentgenol Radium Ther Nucl Med.* 1965;95:852–6.
44. Junck L, Marshall WH. Fatal brain edema after contrast-agent overdose. *AJNR Am J Neuroradiol.* 1986;7:522–5.
45. Mazumder MK, Giri A, Kumar S, Borah A. A highly reproducible mice model of chronic kidney disease: evidences of behavioural abnormalities and blood-brain barrier disruption. *Life Sci.* 2016;161:27–36.
46. Sweeney MD, Sagare AP, Zlokovic BV. Blood-brain barrier breakdown in Alzheimer disease and other neurodegenerative disorders. *Nat Rev Neurol.* 2018;14:133–50.
47. Jabbari B, Vaziri ND. The nature, consequences, and management of neurological disorders in chronic kidney disease. *Hemodial Int.* 2018;22:150–60.
48. Gursoy-Ozdemir Y, Qiu J, Matsuoka N, et al. Cortical spreading depression activates and upregulates MMP-9. *J Clin Invest.* 2004;113:1447–55.
49. Vazana U, Veksler R, Pell GS, et al. Glutamate-mediated blood-brain barrier opening: implications for neuroprotection and drug delivery. *J Neurosci.* 2016;36:7727–39.
50. Cunningham LA, Wetzel M, Rosenberg GA. Multiple roles for MMPs and TIMPs in cerebral ischemia. *Glia.* 2005;50:329–39.
51. Dreier JP. The role of spreading depression, spreading depolarization and spreading ischemia in neurological disease. *Nat Med.* 2011;17:439–47.
52. Parker E, Aboghazleh R, Mumby G, et al. Concussion susceptibility is mediated by spreading depolarization-induced neurovascular dysfunction. *Brain.* 2022;145:2049–63.
53. Takizawa T, Qin T, Lopes de Moraes A, et al. Non-invasively triggered spreading depolarizations induce a rapid pro-inflammatory response in cerebral cortex. *J Cereb Blood Flow Metab.* 2020;40:1117–31.
54. Nakamura H, Strong AJ, Dohmen C, et al. Spreading depolarizations cycle around and enlarge focal ischaemic brain lesions. *Brain.* 2010;133:1994–2006.
55. Park S, Hwang SM, Song JS, Suh DC, Lee DH. Evaluation of the solitaire system in a canine arterial thromboembolic occlusion model: is it safe for the endothelium? *Interv. Neuroradiol.* 2013;19:417–24.
56. Gounis MJ, Wakhloo AK, Chueh J-Y. Preclinical investigations for thrombectomy devices—does it translate to humans? *Stroke.* 2013;44:S7–S10.
57. Whisson CC, Wilson AJ, Evill CA, Sage MR. The effect of intracarotid nonionic contrast media on the blood-brain barrier in acute hypertension. *AJNR Am J Neuroradiol.* 1994;15:95–100.
58. Ivens S, Gabriel S, Greenberg G, Friedman A, Shelef I. Blood-brain barrier breakdown as a novel mechanism underlying cerebral hyperperfusion syndrome. *J Neurol.* 2010;257:615–20.
59. Chassidim Y, Veksler R, Lublinsky S, Pell GS, Friedman A, Shelef I. Quantitative imaging assessment of blood-brain barrier permeability in humans. *Fluids Barriers CNS.* 2013;10:9.
60. Yamasaki Y, Matsuura N, Shozuhara H, Onodera H, Itoyama Y, Kogure K. Interleukin-1 as a pathogenetic mediator of ischemic brain damage in rats. *Stroke.* 1995;26:676–80.
61. MacLean MA, Muradov JH, Greene R, et al. Memantine inhibits cortical spreading depolarization and improves neurovascular function following repetitive traumatic brain injury. *Sci Adv.* 2023;9:eadj2417.
62. Sakowitz OW, Kiening KL, Krajewski KL, et al. Preliminary evidence that ketamine inhibits spreading depolarizations in acute human brain injury. *Stroke.* 2009;40:e519–22.
63. Reinhart KM, Morton RA, Brennan KC, Carlson AP, Shuttleworth CW. Ketamine improves neuronal recovery following spreading depolarization in peri-infarct tissues. *J Neurochem.* 2023. Online ahead of print. DOI: 10.1111/jnc.15923.