

narrative and interpretation of Late Preclassic and Classic Maya history gleaned from an unparalleled knowledge of the inscriptions of Tikal, Palenque, Chichén Itzá, and other major cities, also the subject of a final book with Peter Mathews. Schele's articles, many produced in collaboration with her students and young colleagues such as David Stuart and Nikolai Grube, were the more effective for being published speedily: after beginning work at Copán, she initiated a series of 'Copán Notes' which reported decipherments almost as soon as they were made; by arrangement with a copy shop in Austin, anybody could obtain the Notes by fax immediately. A parallel series of 'Texas Notes' on non-Copán topics was also launched, many of them being decipherments made by members of the hieroglyphic workshops: Linda Schele was generous in her inspiration of others as well as in sharing her ideas. Her inspiration extended on to the lecture platform, where the infectious enthusiasm of her delivery would often be interrupted by her realization, and prompt announcement, of yet another breakthrough in understanding of a text or image. To her, all information was relevant: she did not fully accept Maya archaeologists' concern with precise stratigraphic context, and was happy to work with unprovenanced material if it advanced her understanding, but in a fissionary profession was notably broad-minded and collegial.

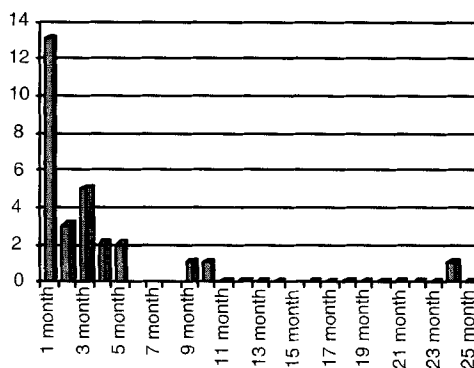
NORMAN HAMMOND

References

- FREIDEL, D.A., L. SCHELE & J. PARKER. 1993. *Maya cosmos*. New York (NY): William Morrow.
 SCHELE, L. 1982. *Maya glyphs: the verbs*. Austin (TX): University of Texas Press.
 SCHELE, L. & D.A. FREIDEL. 1990. *A forest of kings*. New York (NY): William Morrow.
 SCHELE, L. & M.E. MILLER. 1986. *The blood of kings*. Fort Worth (TX): Kimbell Art Museum.

☞ In our last Editorial, we reported with trepidation our increasingly frequent reference to URLs on the internet as a source of information, when that information could be transitory or out-dated. As an experiment, we promised a preliminary analysis of web-pages of the Departments of Archaeology in the United Kingdom. We hesitated to make a comparative analysis of quality (there is, indeed, considerable variation) but we could comment more readily on their frequency of updating. We are happy to report that the majority of these sites are rela-

Frequency of time elapsed since last addition of information to the web site



tively frequently updated, as shown in our simple graph. Only the web-page of the University of Bristol was found to be substantially of historical interest (its latest up-date is at the time of writing almost two years ago, with the Editor still apparently holding her Senior Lectureship there!). All but two of the others had received some attention within the last six months. We strongly urge university departments to provide the institutional structure for regular updating, and we will report back in the future!

Acknowledgements. The editors are indebted to information provided by Prof. Graeme Barker and Prof. Sander van der Leeuw, Cecilia Costa of the Coimbra Group and many members of the European Commission including Pierfranco Alloa, Maria Esmerelda Almeida-Teixeira, Jacques Giraudin, Irving Mitchell, Gian Giuseppe Simeone and Francisco-Jaime Tilak Viegas.

References

- BINTLIFF, J. & K. SBONIAS (ed.). In press. *Reconstructing past population trends in Mediterranean Europe (3000 BC–AD 1800)*. Oxford: Oxbow.
 COMMISSION EUROPÉENNE 1997. *Combattre la désertification. Les politiques, programmes, instruments financiers et projets de la Communauté européenne*. Luxembourg: Office des publications officielles des Communautés européennes.
 DARVILL, T. & A.K. FULTON. 1998a. *MARS: The Monuments At Risk Survey in England, 1995. Main Report*. Bournemouth & London: Bournemouth University & English Heritage.
 1998b. *Summary Report*. Bournemouth & London: Bournemouth University & English Heritage.
 FRANCOVICI, R. & H. PATTERSON (ed.). In press. *Extracting meaning from ploughsoil assemblages*. Oxford: Oxbow.
 GILLINGS, M., D. MATTINGLY & J. VAN DALEN (ed.). In press. *Geographical Information Systems and landscape archaeology*. Oxford: Oxbow.
 LEVEAU, P., K. WALSH & F. TRÉMENT (ed.). In press. *Environmental reconstruction in Mediterranean landscape archaeology*. Oxford: Oxbow.
 RTD INFO. 1998. Laser makes light work of cleaning up the past, *RTD Info (European Commission)* 18: 8–9.
 PASQUINUCCI, M. & F. TRÉMENT (ed.). In press. *Non-destructive techniques applied to landscape archaeology*. Oxford: Oxbow.