



## Article

\*Now at: Woodwell Climate Research Center, Falmouth, MA 02540, USA.

**Cite this article:** Lute AC, Abatzoglou JT, Fountain AG, Bartholomaus TC (2024). Projected loss of rock glacier habitat in the contiguous western United States with warming. *Journal of Glaciology* **70**, e27, 1–11. <https://doi.org/10.1017/jog.2024.56>

Received: 22 August 2023

Revised: 22 June 2024

Accepted: 25 June 2024

**Keywords:**

climate change; glacier mapping; glaciological model experiments; ice and climate; mountain glaciers

**Corresponding author:**

Abigail C. Lute;

Email: [alute@woodwellclimate.org](mailto:alute@woodwellclimate.org)

# Projected loss of rock glacier habitat in the contiguous western United States with warming

Abigail C. Lute<sup>1,\*</sup>, John T. Abatzoglou<sup>2</sup>, Andrew G. Fountain<sup>3</sup> and Timothy C. Bartholomaus<sup>4</sup>

<sup>1</sup>Water Resources Program, University of Idaho, Moscow, ID 83844, USA; <sup>2</sup>Management of Complex Systems, University of California, Merced, CA 95343, USA; <sup>3</sup>Departments of Geology and Geography, Portland State University, Portland, OR 97201, USA and <sup>4</sup>Department of Earth and Spatial Sciences, University of Idaho, Moscow, ID 83844, USA

**Abstract**

Rock glaciers support alpine biodiversity and may respond more slowly to warming than snow or glaciers. While responses of snow and glaciers to climate change are relatively well understood, a robust assessment of rock glacier environmental niche, future distributions of rock glaciers and potential for development of rock glaciers from current glaciers is lacking. Using process-relevant, high-resolution environmental descriptors, we develop a species distribution model of the topographic, geologic and hydroclimatic niche of rock glaciers that provides novel estimates of potential rock glacier distributions for different climates. We identify mean annual air temperature and headwall area as the dominant controls on rock glacier spatial distributions, with rock glaciers more likely to be found in areas with mean annual temperatures close to  $-5^{\circ}\text{C}$ , little rain, northern aspects and broad headwalls. While rock glacier climate equilibration may take hundreds of years, we find that equilibration to present climate will result in a 50% reduction in rock glacier habitat and equilibration to late 21st-century climate under a high-end warming scenario will result in a 99% reduction in rock glacier habitat across the western USA. Under future conditions, we find limited potential for glacier to rock glacier transformation (3% of glacierized area), concentrated in cold, high elevation, moderate precipitation areas.

**Introduction**

The mountain cryosphere provides critical services including water storage, climate regulation and habitat for cold-adapted species (Huggel and others, 2015). Rock glaciers are one component of the mountain cryosphere that is particularly important in semi-arid montane portions of the world. In the contiguous western USA, the total water equivalent of rock glaciers is estimated to be one-quarter of that of glaciers (Fountain and others, 2017; Jones and others, 2018; Trcka, 2020). While climate change is reducing snowpack and glacier mass balance (Moore and others, 2009; Huss and others, 2017; Mote and others, 2018), rock glaciers are hypothesized to be more resilient to warming due to their insulating debris mantle (Anderson and others, 2018); the response time of rock glaciers to warming is hundreds of years (Müller and others, 2016), much longer than the decadal response time of mid-latitude glaciers (Cuffey and Paterson, 2010) and the almost immediate response time of snow. This suggests that rock glaciers may become an increasingly important source of summer water supply and refugium for cold-adapted species (Millar and others, 2015; Harrington and others, 2017, 2018; Jones and others, 2018).

Rock glaciers depend on a balance of ice and debris fluxes which are controlled by climate, topography and lithology (Morris, 1981; Chueca, 1992; Brenning and Trombotto, 2006; Johnson and others, 2007; Millar and Westfall, 2008; Brenning and Azócar, 2010; Bolch and Gorbunov, 2014). Most previous studies on these combined factors, herein referred to as rock glacier habitat, have been largely descriptive, conducted at the scale of mountain ranges or small regions ( $<300\,000\text{ km}^2$ ), and/or have considered limited hydroclimatic information despite the dependence of rock glaciers on the accumulation and ablation of snow and ice. Notable exceptions include Johnson and others (2021) and Millar and Westfall (2019). Larger scale assessments of the influence of a more targeted, process-oriented set of predictors may better identify the fundamental environmental niche of rock glaciers and test qualitative and conceptual hypotheses of rock glacier habitat.

Case studies and numerical modeling approaches for individual or small groups of rock glaciers found that rock glaciers in warmer locations will deteriorate with continued warming while some conventional glaciers may transition to rock glaciers (Kääb and others, 2007; Delaloye and others, 2010; Anderson and others, 2018; Jones and others, 2019; Marcer and others, 2021). Glaciers that become rock glaciers are likely to persist on the landscape longer and continue to provide important services such as cool summer water supply. These past analyses have provided valuable insights into rock glacier rheology, response times and climate sensitivity, but fall short of providing a more generalizable understanding of how rock glaciers occupy landscapes across broader scales or how they may respond to climate change. It remains unclear under what geologic, topographic and hydroclimatic conditions rock glaciers are likely to persist, disappear or develop from glaciers.

© The Author(s), 2024. Published by Cambridge University Press on behalf of International Glaciological Society. This is an Open Access article, distributed under the terms of the Creative Commons Attribution licence (<http://creativecommons.org/licenses/by/4.0/>), which permits unrestricted re-use, distribution and reproduction, provided the original article is properly cited.

[cambridge.org/jog](https://www.cambridge.org/jog)



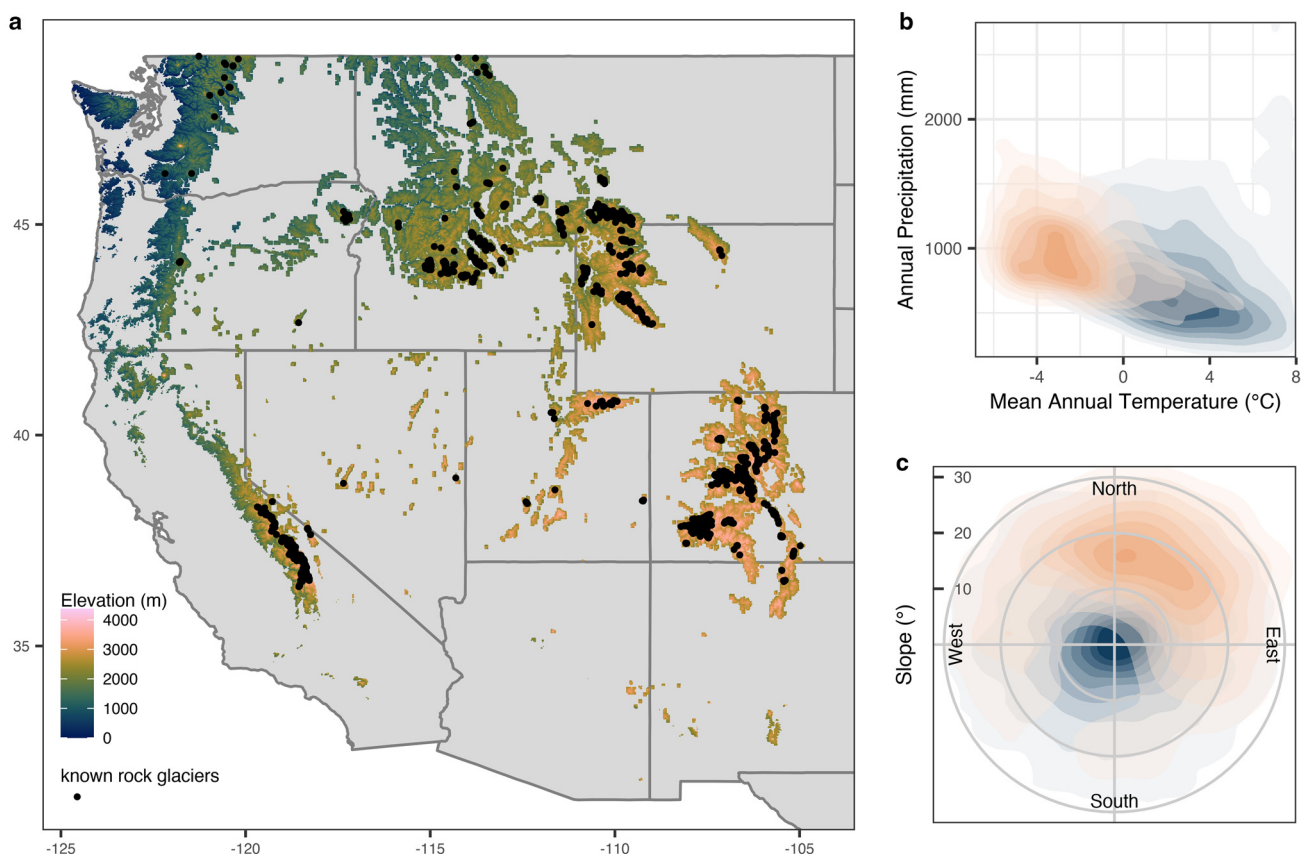
Here we employ a machine learning approach (the maximum entropy method (Maxent); Phillips and others, 2006; Phillips and Dudík, 2008) to address three primary questions: (1) What hydroclimatic, geologic and topographic constraints describe the environmental niche of rock glaciers?; (2) How will the spatial distribution of rock glaciers change with projected climate change? and (3) What is the potential for glacier to rock glacier transformation in the western USA? We address these questions by constructing a Maxent model of rock glacier distributions using datasets of known rock glacier locations and high-resolution pre-industrial hydroclimatic, geologic and topographic predictors across the contiguous western USA. We use this model and data reflecting present and projected late 21st-century hydroclimatic conditions under a high-warming scenario to predict where rock glaciers are likely to disappear, persist or develop from glaciers in the future, noting that the actual process of equilibration to these scenarios will take hundreds of years. This approach elucidates generalizable controls on rock glacier spatial distributions and their hydroclimatic sensitivity and allows us to provide the first estimates of future rock glacier distributions across the contiguous western USA.

## Data and methods

### Data

To answer our three research questions, we compiled a set of environmental predictors that capture the hydroclimatic, topographic and geologic controls on rock glaciers (Table S1). Predictors cover the contiguous western USA at a common 210 m spatial resolution, similar to the scale of the rock glaciers

themselves (Johnson and others, 2021). We limit the western US modeling domain to potential rock glacier habitat using lower montane and higher elevation classes from the mountain classification scheme of Körner and others (2011) and a mean annual pre-industrial temperature threshold  $<8^{\circ}\text{C}$  (data described below; Fig. 1). This domain contains all active rock glacier features from the inventory of Trcka (2020;  $n = 1486$ ), in which active rock glaciers are defined as those that contain ice and that move, regardless of origin (glacial or periglacial), as indicated by (1) terminus slopes that are steeper than the angle of repose and exhibit lighter-colored, less weathered debris, (2) a swollen as opposed to deflated appearance and (3) significant extension of the feature into the valley (Barsch, 1996; Jones and others, 2019). In contrast, inactive rock glaciers (not considered in the present study) are those that contain ice but no longer move and are characterized by a more gently sloping terminus of weathered rock, a deflated appearance, possible vegetation cover and extension of the feature into the valley suggesting past movement and internal ice but no present movement and little internal ice (Barsch, 1996; Johnson and others, 2007). Non-rock glacier periglacial features were excluded from the inventory. The Trcka (2020) inventory is an update of the Johnson (2020) inventory and can be considered the rock glacier counterpart to the more recent glacier and perennial snowfield inventory of Fountain and others (2023). A further description of the Trcka inventory is provided in the Supporting information. The centroids of the active rock glaciers were used as presence locations in the Maxent models. Glacier outlines from the Global Land Ice Measurements from Space dataset (GLIMS; Fountain, 2006; Hoffman and Fountain, 2016) and modeled permafrost probability data (Obu and others, 2019) were also used for comparison with rock glaciers.



**Figure 1.** (a) Modeling domain. Elevation of terrain is indicated by the color bar. Black points denote known rock glacier locations. In bivariate density plots of (b) mean annual temperature and annual precipitation and (c) aspect and slope, salmon color indicates the distribution of rock glacier locations while gray-blue indicates the distribution of background domain locations in 2-D pre-industrial covariate space.

Given the rapid recent global warming and the roughly several hundred years response time of rock glaciers to warming (Müller and others, 2016), it is unlikely that rock glaciers are in equilibrium with the present hydroclimate (Anderson and others, 2018). We assumed that current rock glaciers are a result of pre-industrial hydroclimate (1850–79) and developed models of the present distribution of rock glaciers using pre-industrial hydroclimate forcing. We then predicted rock glacier distributions under present hydroclimate conditions (2000–13) and future conditions under a high-warming scenario (2071–2100); data sources are described below. Since the models are calibrated on pre-industrial conditions and current rock glacier locations, predicted rock glacier distributions for the different time periods reflect the distribution that would result once rock glaciers equilibrate to the given hydroclimatic conditions. For the present period, climatological measures of mean, minimum and maximum annual temperatures (tmean, tmin, tmax), annual number of temperature oscillations  $\sim 0^\circ\text{C}$  (freeze–thaw; based on 4 hourly data), annual precipitation (precip), annual rainfall (rain) and annual downward solar radiation (solar) were calculated from output from the Weather Research and Forecasting model (WRF; Liu and others, 2017) for 2000–13 statistically downscaled to  $\sim 210$  m horizontal resolution using local lapse rates, precipitation bias correction and solar terrain correction (Lute and others, 2022). Pre-industrial climate covariates were created by perturbing the present period to reflect pre-industrial conditions (1850–79) using monthly climatological differences in climate between the pre-industrial and present periods from the Fifth Coupled Model Intercomparison Project (CMIP5; Taylor and others, 2012; Lute and others, 2022). Future climate covariates were created using pseudo-global warming runs from the WRF, reflecting 2071–2100 conditions under RCP8.5 derived from 19 climate models participating in CMIP5 (more details are available in Liu and others, 2017). Both pre-industrial and future covariates were downscaled using the same methods as the present period (Lute and others, 2022). Further discussion of the predictor variables is available in the Supporting information.

We also considered snow metrics calculated from an energy-balance snow model (Lute and others, 2022) forced with the previously described climate datasets. These metrics include annual snowfall water equivalent (sfe), snow duration (duration), annual maximum snow water equivalent (maxswe) and the number of snow-free days between the snow on and snow off dates (nosnowdays). The use of snow data enhances the physical relevance of the predictor variables relative to using variables derived from temperature and precipitation alone as is often done in environmental niche modeling, and may enhance model transferability in space and time (Austin, 2002).

Topographic factors are widely known to influence rock glaciers as they affect both debris and ice supply as well as the energy budget (Frauenfelder and others, 2003). Here ice supply is considered to come from snow accumulation as well as freezing water within the ice-debris matrix. To capture these topographic effects, terrain aspect, terrain slope and a headwall area metric were derived from the 1 arcsec National Elevation Dataset (Gesch and others, 2018), aggregated to 210 m resolution. The headwall area metric was calculated as the fraction of pixels within a given radius of the target pixel that are higher elevation than the target pixel and exceed a slope threshold (e.g. Bolch and Gorbunov, 2014; Kenner and Magnusson, 2017). We employed two radii (three and five pixels; 630 and 1050 m) to create headwall metrics at different scales (headwall3 and headwall5, respectively).

Geologic factors influence the debris available for rock glaciers, thereby exerting a first order control on rock glacier distributions (Haerberli and others, 2006; Johnson and others, 2007). We used a rasterized version of a generalized lithology classification

consisting of 12 rock types (Anning and Ator, 2017) to represent these effects. Rock type descriptions are provided in Table S2.

## Methods

To address our fundamental question of the hydroclimatic, geologic and topographic constraints that shape the environmental niche of rock glaciers we employ Maxent modeling. Maxent modeling (Phillips and others, 2006; Phillips and Dudík, 2008) is a commonly used machine learning approach for environmental niche modeling that is data-driven and well-suited to large datasets. Maxent models use known species presence locations and spatial fields of predictors (i.e. background data) to construct features from the predictor data which are combined to allow modeling of complex, non-linear relationships. Maxent's logistic output provides continuous values between zero and one which can be interpreted as a measure of habitat suitability. Maxent has provided excellent performance in predicting species distributions, including under new conditions in space and time (Elith and others, 2006; Duque-Lazo and others, 2016). There has been a recent uptick in the application of Maxent in the physical sciences and glaciology in particular where it has generated new insights into surging glaciers and glacier responses to climate change (Sevestre and Benn, 2015; Comino and others, 2021; Manquehual-Cheuque and Somos-Valenzuela, 2021; Wang and others, 2021). Maxent is well suited to address the questions we pose here because it (1) uses presence only data such as the rock glacier inventory, (2) can handle large datasets of environmental covariates enabling high-resolution, large-extent modeling and (3) is designed to address questions about changing distributions and habitat suitability. We implemented Maxent using the *dismo* (Hijmans and others, 2020) and *ENMeval* (Kass and others, 2021) packages in R (R Core Team, 2020). For modeling efficiency, 10 000 background points were randomly selected for model calibration, in addition to the 1486 known rock glacier locations.

Prior to running Maxent, we removed strongly collinear variables (see Supporting information, Fig. S1 for details), leaving nine covariates. Next, to determine optimal model complexity and avoid overfitting, we built a suite of models using various levels of model complexity (as determined by the beta parameter and feature classes) and evaluated model performance using the corrected Akaike information criterion statistic (Akaike, 1974; Fig. S2; see Supporting information for details). The selected model was used to map rock glacier habitat suitability across the domain based on Maxent's logistic output.

We performed several cross validations of the model to assess model transferability geographically and to new climates. First, we split the data into 400 km  $\times$  400 km blocks using the *blockCV* R package (Valavi and others, 2019) with a block size approximately ten times larger than the median effective range of spatial autocorrelation of the predictor variables (Fig. S3). Second, we split the data into cold and warm groups to evaluate potential model transferability to a warmer climate. Specifically, we developed a model using data with pre-industrial tmean below the median value for rock glacier locations ( $\sim -2.8^\circ\text{C}$ ) and evaluated this model on the warmer half of rock glacier presence locations. The area under the receiver operating characteristic curve statistic (AUC) was used to assess model performance.

To assess our first research question, predictor variable importance was assessed using the model jackknife approach available in Maxent. The approach calculates the loss in regularized training gain when each variable is left out of a model as well as the regularized training gain of a model built on that variable alone. We present a normalized version of the regularized training gain for ease of interpretation. The relationship of each covariate to the model predictions of presence was further

evaluated by inspecting the response curves that characterize the relationship between covariate values and predicted suitability of rock glacier habitat from models based on each variable in isolation. Additional marginal response curves that characterize the relationship between covariate values and predicted suitability when all other variables are held constant at their average value are provided in Figure S4.

To address our second research question, the optimal model calibrated on the pre-industrial covariates and current active rock glacier locations was used to predict rock glacier habitat suitability over time by applying it to the pre-industrial, present and future predictors. Throughout, references to results for a particular time period should be interpreted as results assuming active rock glacier equilibration to hydroclimatic conditions in that time period, not to realized changes by that time period. For example, predictions of rock glacier suitability under future hydroclimate represent the potential distribution of active rock glaciers that would result once rock glaciers reached equilibrium with the future climate, which in reality may be hundreds of years later due to the slow response of rock glaciers to warming (Müller and others, 2016).

To control predictions outside of the range of the calibration data, we used clamping, which keeps the response curve probabilities constant outside the range of calibration conditions. To define a binary presence/absence threshold from the continuous model predictions, we used the pre-industrial suitability threshold that omitted 10% of known rock glaciers. This threshold was chosen to balance the competing objectives of minimizing over prediction of rock glacier suitable area and minimizing categorization of known rock glacier sites as unsuitable. For both the pre-industrial to present transition and the present to future transition, locations were classified into four groups depending on the change in their predicted suitability. Locations that did not exceed the threshold in either the earlier or later period were classified as 'never suitable'. Locations that exceeded the threshold in both periods were labeled 'persist'. Locations which were suitable in the earlier period but not in the later period were labeled 'disappear', and locations which were not suitable in the earlier period but were suitable in the later period were labeled 'enhance'. Suitable and unsuitable classifications were also used to aggregate suitability predictions by ecoregion (US Environmental Protection Agency, 2013; Table S3).

To address the third research question, we extracted the rock glacier suitability for each time period at locations currently occupied by conventional (i.e. ice) glaciers. We assessed spatial patterns of suitability and average rock glacier suitability across these locations. Locations of potential glacier to rock glacier transformation were defined as presently glacierized areas which the model indicated were suitable for rock glaciers. To better understand differences between glacier and rock glacier habitat, we compared the topographic, geologic and hydroclimatic characteristics of glacier and rock glacier locations, as well as the characteristics of suitable and unsuitable rock glacier habitat in glacierized locations.

## Results

### *Environmental niche model of rock glaciers*

The Maxent model identified several intuitive hydroclimatic, geologic and topographic constraints in the environmental niche of rock glaciers (Fig. 2). The optimal Maxent model based on the balance of performance and parsimony had a beta parameter of nine and linear, quadratic, threshold and hinge feature classes and an AUC of 0.97 (Fig. S2). The model jackknife approach highlighted annual mean temperature (tmean) as the most important variable in the rock glacier suitability model

(Fig. 2a), with headwall (headwall5), slope and snowfall water equivalent (sfe) as the next most important. The relationships between each variable and predicted rock glacier suitability largely matched expectations based on the literature (Fig. 2b; Fig. S4 shows marginal response curves). Hydroclimatically, the model found that rock glaciers were most likely in areas with tmean within a few degrees of  $-5^{\circ}\text{C}$ ,  $<500$  mm rainfall,  $<200$   $\text{W m}^{-2}$  solar radiation,  $\sim 500$ – $2000$  mm of sfe and continuous snowpacks. Rock glaciers were more likely to be found on northern aspects, on  $10$ – $40^{\circ}$  slopes, and in locations with non-zero headwall areas. The model showed a slight preference for metamorphic and igneous rock types and indicated sedimentary rock types were less likely to host rock glaciers.

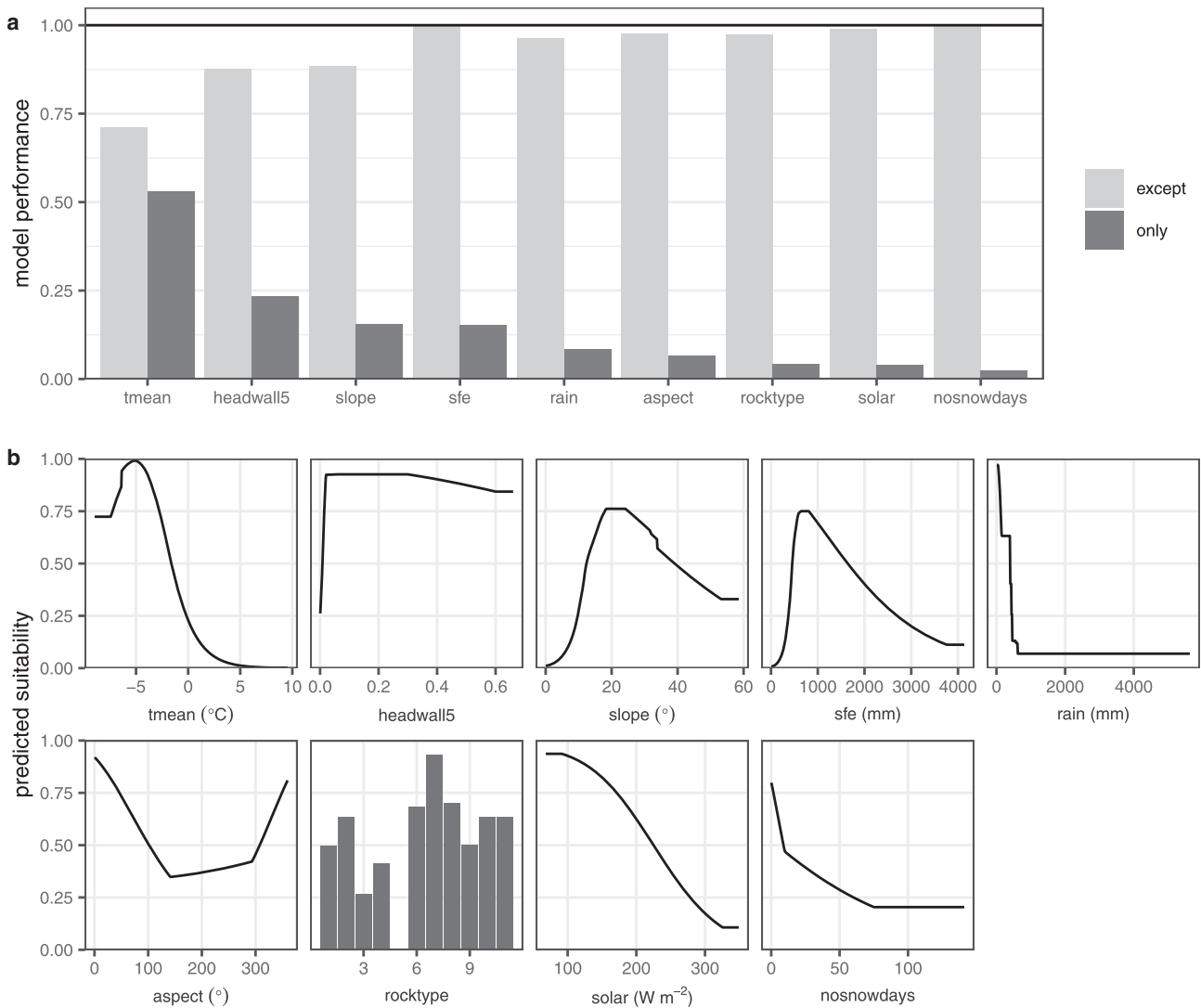
The mean suitability at active rock glacier locations was higher than at inactive rock glacier locations (0.72 and 0.52, respectively; Table S4). Rock glaciers excluded at the prediction threshold (suitability  $<0.23$ , representing the bottom 10% of rock glaciers) were scattered across the domain, with the greatest concentrations in Colorado and New Mexico (Fig. S5). Known rock glaciers predicted to have low suitability tended to have smaller headwall areas, more snow-free days, more diverse aspects and rock types, less snowfall, more solar radiation and warmer temperatures (Fig. S6).

Models calibrated on portions of the domain and validated on other portions of the domain maintained high AUC values in both calibration and validation, suggesting that the model is robust to changing environmental conditions (Table S5). In particular, a model calibrated on colder rock glacier locations exhibited no degradation in performance when applied to warmer rock glacier locations, suggesting that the model may be transferable to future climates.

### *Predicted rock glacier distributions*

The Maxent model described above was forced with pre-industrial covariates to predict rock glacier habitat suitability under pre-industrial hydroclimate, which is assumed to drive the present distribution of rock glaciers. Using a suitability threshold of 0.23, this approach predicted  $\sim 29\,300$   $\text{km}^2$  of potential rock glacier habitat across the  $437\,000$   $\text{km}^2$  modeling domain, with concentrations in the high-elevation regions of the Rockies, the southeastern Sierra Nevada, and the eastern portion of the North Cascades (Table S3; Figs 3a, d). The areas of high-predicted rock glacier suitability aligned well with known current rock glacier locations (Fig. 1); however, the total area of suitable rock glacier habitat was much greater than the area of known rock glaciers ( $226$   $\text{km}^2$ ; Trcka, 2020), suggesting that modeled suitable areas should be viewed as possible not actual rock glacier habitat. The spatial distribution of pre-industrial rock glacier suitability also corresponded well with the spatial distribution of permafrost (Fig. S7). Permafrost probabilities were greater than rock glacier suitability values in some of the highest elevation, coldest mountain ranges in Wyoming and Colorado, whereas the opposite was true in warmer mountain ranges such as the Northern Cascades and the Sierra Nevada. This finding is expected given that permafrost presence is conditioned primarily on temperature, which is mediated to some extent by snow cover and the degree of air ventilation within the ground (Harris and Pedersen, 1998). In contrast, rock glaciers require suitable moisture and debris inputs as well as temperature, factors that are controlled by topographic, geologic and broader hydroclimatic conditions. We also emphasize that rock glaciers in this region are typically smaller than the  $1$   $\text{km}^2$  gridcells of the permafrost data and low permafrost probability values indicate sporadic permafrost, therefore it is reasonable that rock glaciers may occur in locations with low permafrost probabilities.

Maxent was then forced with data representing present and future hydroclimatic conditions. These scenarios simulate the



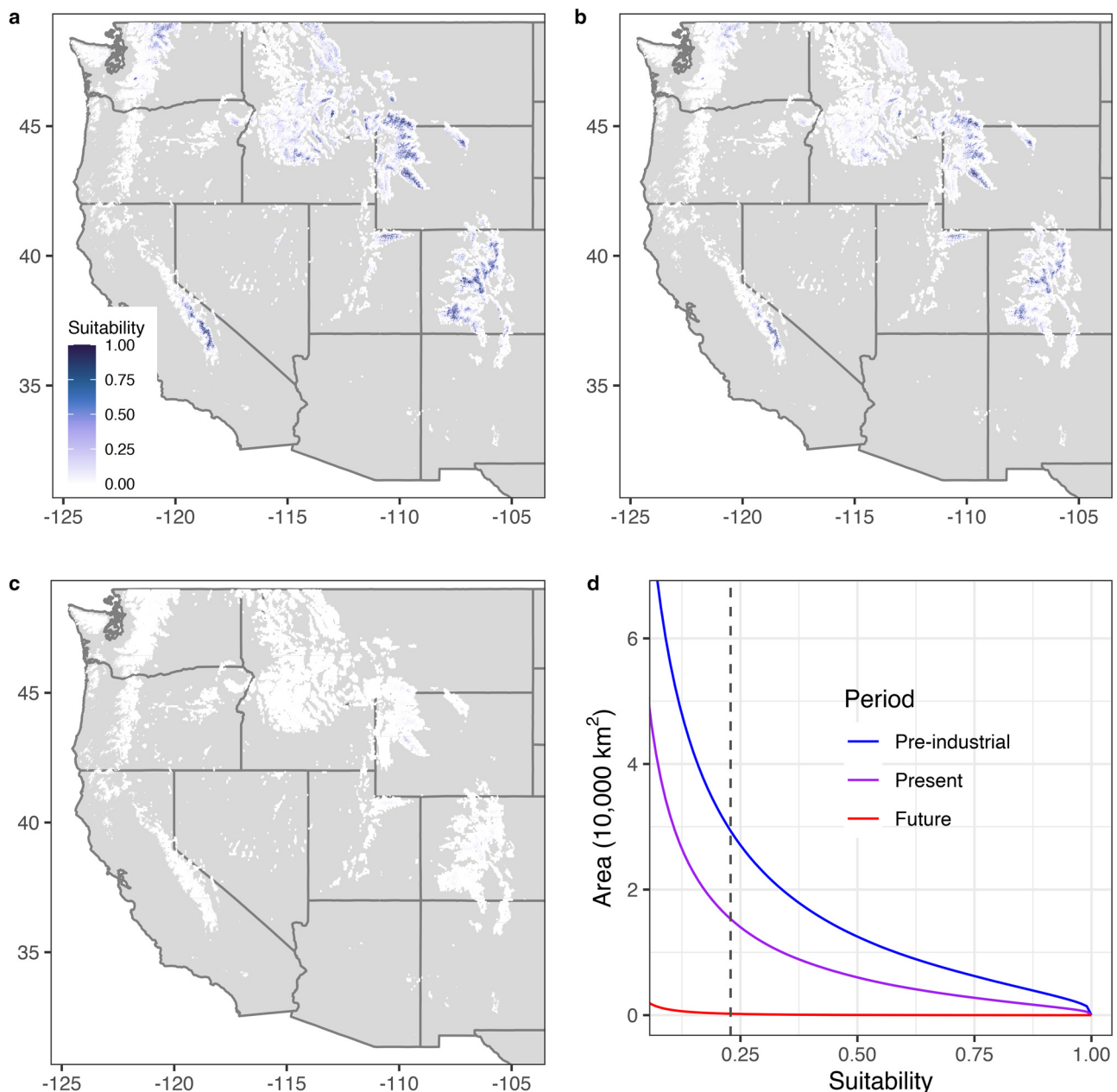
**Figure 2.** Results of the Maxent modeling, showing the dependence of rock glacier habitat suitability on each pre-industrial covariate. (a) Results of the Maxent jackknife approach, showing the importance of each variable relative to a baseline model including all covariates. Model performance ( $y$ -axis) is the normalized regularized training gain. Black horizontal line at 1.0 indicates the performance of the model with all variables. Light gray bars indicate the performance of models built with all variables except for the variable of interest. Dark gray bars indicate the performance of models built on each variable alone and determine the order of the bars. (b) Response functions illustrating the relationship between the covariate values ( $x$ -axis) and the rock glacier habitat suitability ( $y$ -axis) based on models of each variable in isolation (dark gray bars in (a)). Covariates considered are annual mean temperature (tmean), headwall area (headwall5), terrain slope (slope), snowfall water equivalent (sfe), annual rainfall (rain), terrain aspect (aspect), rock type (rocktype), mean annual downward shortwave radiation (solar) and number of snow-free days between snow on and snow off dates (nosnowdays). Descriptions of rock type values are available in Table S2.

response of rock glaciers in equilibrium with novel conditions, not the response of rock glaciers on the same time frame as the hydroclimatic changes. Thus, rock glacier response to present hydroclimatic conditions may not be realized until hundreds of years from now. The rock glacier suitability in equilibrium with the present hydroclimate exhibits a spatial pattern similar to that in equilibrium with pre-industrial hydroclimate (Fig. 3b). However, most locations that were suitable in the pre-industrial period saw a reduction in suitability when projected to the present hydroclimate, resulting in a net reduction in suitable area of 48% or 14 400 km<sup>2</sup>, and 23% of known rock glacier locations being unsuitable (Table S3). A few areas were predicted to have enhanced suitability (<0.1% of the domain), including high-elevation portions of the Southern Sierra and Middle Rockies. These locations were cooler, had more solar radiation and were more focused on southern aspects relative to locations where habitat persisted or disappeared (Fig. S8). Locations where habitat persisted tended to be more focused on north aspects and have cooler temperatures than locations where habitat disappeared (Fig. S8).

Drastic reductions in rock glacier habitat were simulated using future late 21st-century high-end warming (Fig. 3c). Relative to the present period, more than 99% (~29 100 km<sup>2</sup>) of suitable habitat was projected to disappear, including 94% of known rock glacier locations (Table S3). The 0.1% of the domain projected to retain suitable habitat under the future hydroclimate was scattered in the Sierra Nevada, the Middle Rockies, the Wasatch and Uinta mountains and the Southern Rockies (Table S3). These locations were cooler, more focused on north aspects, received less solar radiation, had larger headwall areas and were at higher elevations than locations where suitability was projected to disappear (Fig. S9). No gridcells were predicted to have enhanced suitability in the future hydroclimate.

#### Glacier to rock glacier transformation

To address our third research question, regarding glacier to rock glacier transformation, we evaluated the rock glacier suitability at locations presently occupied by glaciers. Present-day glaciers



**Figure 3.** Predicted suitability for rock glaciers under pre-industrial (a), present (b) and end of 21st-century high-end warming (c) conditions across the contiguous western USA (d) shows the area on the y-axis that exceeds the suitability level on the x-axis (starting at 0.1) for the three time periods. The dashed line in (d) marks the suitability threshold used in subsequent analyses (0.229).

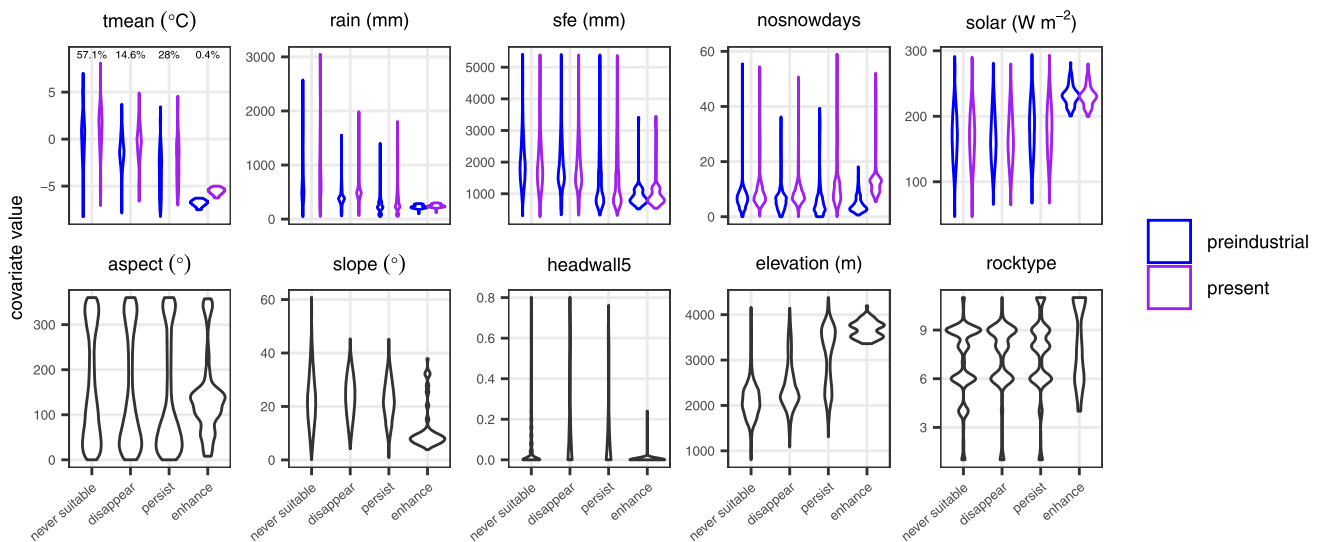
cover  $\sim 554 \text{ km}^2$  of the modeling domain (Fountain and others, 2017). Relative to rock glacier locations, glacier locations span a larger range of temperature and have more snowfall and lower solar radiation (Fig. S10). Additionally, glaciers can occupy sites with more rain, at lower elevations, and with higher slopes than rock glaciers. During the pre-industrial period, 42.6% of present glacier area was considered suitable for rock glaciers. Suitable area declined to 28.3% in the present period and 2.9% in the future period. Glacierized locations that retained suitable rock glacier habitat in the present period had cooler temperatures, less rain and snowfall and were at higher elevations than locations that became unsuitable (Fig. 4). Rock glacier suitability increased between the pre-industrial and present periods at some glacierized locations in the Middle Rockies. These locations had cooler temperatures, more solar radiation and were located at higher elevations, on lower slopes and were less focused on north aspects (Fig. 4).

Between the present and future periods, there was a large reduction in rock glacier suitability at glacierized locations (Fig. S5). Relative to locations where suitability disappeared, locations where suitability persisted had cooler temperatures, less rain, more solar radiation, larger headwall areas and were more concentrated on north aspects and at high elevations.

## Discussion

### Maxent model fit and transferability

The Maxent model calibrated on pre-industrial covariates and current known rock glacier locations performed very well in both calibration and cross validation, maintaining AUC values  $> 0.85$  in all cases (Table S5). The excellent cross-validation performance and the diversity of conditions across the contiguous western USA suggest that the model may transfer well to locations



**Figure 4.** Distribution of covariates between pre-industrial (blue) and present (purple) time periods, for presently glacierized locations, grouped by suitability change category. For covariates that are not time-varying (bottom row), a single violin is shown for each suitability category. In the first subplot, percent values indicate the percent of modeled glacierized area that falls into each category.

outside of the modeling domain, including warmer novel climates. The calibration AUC of 0.97 indicates that the model is skilled at discriminating between rock glacier and background locations (Merow and others, 2013); however the model predicted  $\sim 29\,300\text{ km}^2$  of suitable habitat in the pre-industrial period, which is significantly greater than the estimated area of present rock glaciers ( $226\text{ km}^2$ ; Trcka, 2020). Model identification of unoccupied but ‘potential’ habitat and its distinction from the realized environmental niche is common in species distribution modeling (Elith and Leathwick, 2009). Discrepancies between the two in this case may stem from several sources. Rock glaciers are difficult to detect in aerial imagery and therefore may be underestimated in the inventory. Some rock glaciers may have adjusted more quickly to hydroclimatic changes than we assumed and may already be lost, resulting in rock glacier models based on pre-industrial climate over predicting habitat. Finally, differences between modeled and actual habitat may be in part due to imperfect representation of constraints on rock glacier habitat stemming from choice of covariates and uncertainty in covariate values, which we discuss further below.

### Rock glacier environmental niche

Relationships between topographic and geologic covariates and rock glacier habitat suitability simulated by the model (Fig. 2b) matched expectations based on the literature (Wahrhaftig and Cox, 1959; Brazier and others, 1998; Matsuoka and Ikeda, 2001; Frauenfelder and others, 2003; Haeberli and others, 2006; Johnson and others, 2007; Angillieri, 2010; Bolch and Gorbunov, 2014; Kenner and Magnusson, 2017; Charbonneau and Smith, 2018). Climatically, rock glaciers were more likely in areas with pre-industrial annual mean temperature  $<0^\circ\text{C}$ , with peak suitability within a few degrees of  $-5^\circ\text{C}$ , which corresponds well with some other estimates of rock glacier temperature niches based on present climate (Bolch and Gorbunov, 2014; Kenner and Magnusson, 2017; Munroe, 2018) but is cooler than other estimates (Millar and others, 2013; Millar and Westfall, 2019). Additionally, the distribution of suitable habitat under pre-industrial hydroclimatic was similar to estimates of the current distribution of permafrost (Obu and others, 2019). In terms of precipitation, rock glaciers were more likely in areas that received  $<500\text{ mm a}^{-1}$  of rain and between  $500$  and  $2000\text{ mm a}^{-1}$  of sfe,

which is comparable to previous estimates of winter precipitation at rock glaciers (Millar and Westfall, 2008; Millar and Westfall, 2019). Areas with low solar radiation had higher predicted suitability (Fig. 2b, Johnson and others, 2007). Compared with previous efforts to understand controls on rock glacier spatial distributions, this work considered more functionally relevant covariates, a larger spatial extent, a larger sample of known rock glaciers and a larger range of environmental conditions. These characteristics, in addition to several successful cross validations, lend confidence to the generalizability of the relationships we found between environmental covariates and rock glacier distributions.

### Future spatial distribution of rock glaciers

This work provided the first estimates of future rock glacier spatial distributions. Relative to pre-industrial rock glacier habitat, habitat in equilibria with the present hydroclimate showed moderate declines in suitability in most mountain ranges and some increases in suitability in high-elevation areas and on equatorward aspects (Figs 3b, S7). An additional 12.5% of known rock glacier locations were considered unsuitable in the present hydroclimate, suggesting that the rock glaciers there are currently in disequilibrium. Simulated changes under the present hydroclimate scenario could be realized as soon as the end of the 21st century but may take longer. In contrast, 99% of habitat that was suitable for rock glaciers under the pre-industrial hydroclimate became unsuitable in equilibria with future hydroclimate (Fig. 3c, Table S3). Remaining habitat under such high-end warming was concentrated at the highest elevations and on northward aspects (Fig. S9). While these projections are dire, equilibration to these conditions would likely be realized over the next several hundred years. These contrasting scenarios illustrate the potential for actions which stabilize climate warming close to current levels to avoid the near complete loss of one element of the mountain cryosphere.

While snow and glaciers are expected to become increasingly focused on north facing slopes with minimal solar radiation (Florentine and others, 2018; Barsugli and others, 2020), rock glacier habitat was predicted to improve on some south-facing slopes with high solar radiation under the present hydroclimate (Figs 4, S7). These sites were also some of the coldest and highest elevation sites. This finding aligns with previous work on current rock glacier distributions that shows that rock glaciers can exist

on equatorward aspects with high solar radiation if they are sufficiently cold (Brenning and Trombotto, 2006; Brenning and Azócar, 2010). This can be explained by the fact that solar radiation warms the debris surface and the air above the rock glacier, but due to air density differences the warm air is unlikely to infiltrate the debris matrix and thus warming is limited to conduction through the debris matrix, which is minimal (Haeberli and others, 2006). However, these high-radiation sites only maintained habitat through the present period; under the future scenario, rock glacier habitat became increasingly focused on poleward aspects and at high elevations (Fig. 5, S8), similar to expectations for snow and glaciers.

### Glacier to rock glacier transformation

We found limited potential for glacier to rock glacier transformation in the contiguous western USA. Presently glacierized areas that were suitable for rock glaciers in the present hydroclimate were cold, high-elevation sites that received <1500 mm of sfe (Fig. 4) and were scattered across the southern Sierra Nevada, Middle Rockies and North Cascade mountains. Under the future scenario, presently glacierized areas with suitable rock glacier habitat were largely restricted to the Middle Rockies. Case studies of glacier to rock glacier transformations in the Central Andes showed that this transformation can occur over the course of decades (Monnier and Kinnard, 2015, 2017). Along with other studies, they highlighted the importance of topoclimatic conditions and specifically a reduction in the ratio of ice supply to debris supply (Anderson and others, 2018; Knight and others, 2019). Glacier ice volume in the western USA has declined and is projected to continue declining through the 21st century (Radić and others, 2014; Frans and others, 2018; Rounce and others, 2023). However, the largest glaciers (concentrated in Oregon and Washington) tend to be in locations that receive the most precipitation and snowfall but have the smallest headwall areas, and vice versa. Therefore, we hypothesize that many contiguous western US glaciers in wetter locations will not transition to rock glaciers because the reduction in ice supply necessary to achieve a suitable ice to debris ratio would require a large reduction in the snowfall to rainfall ratio and be associated with a large increase in rainfall, which is unsuitable for rock glaciers. This aligns with work based on observations of currently

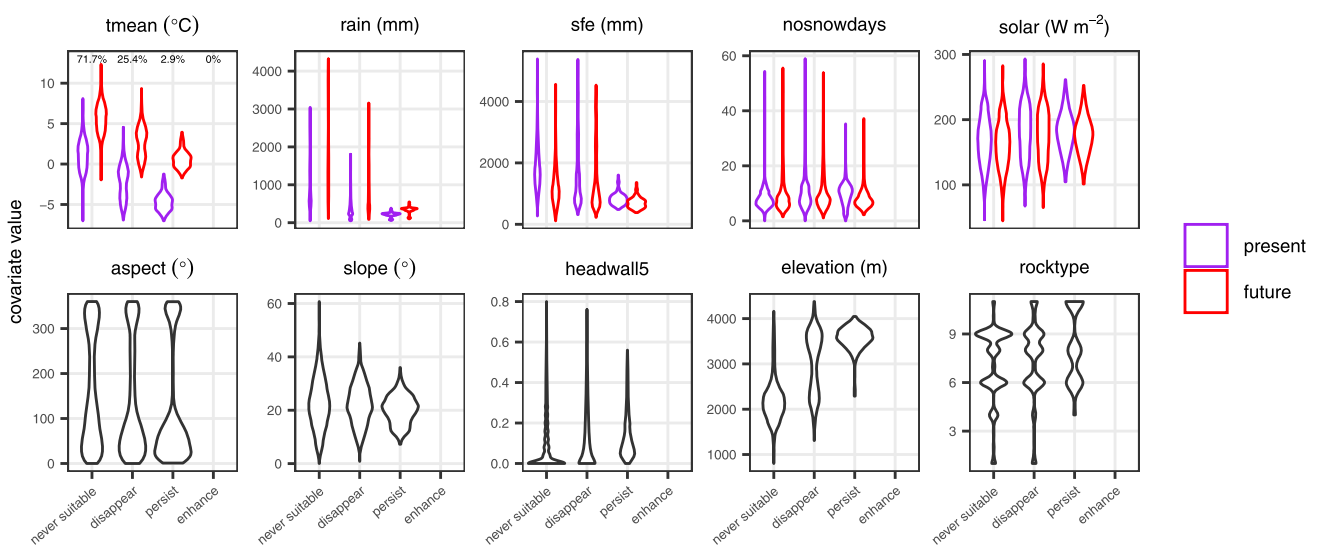
transitioning landforms, which suggested that debris supply may determine which glaciers transition to rock glaciers and which do not (Jones and others, 2019).

### Uncertainties and future work

Sources of uncertainty in our estimates of rock glacier distributions and their environmental controls include the spatial scale of the covariates (especially in the case of terrain metrics; Deng and others, 2007), missing or poorly captured processes such as snow redistribution or rock fracture density (e.g. Molnar and others, 2007), uncertainties in the downscaled climate data, the model formulation (e.g. beta parameter, feature classes, and covariate selection; Convertino and others, 2014), the suitability threshold (Liu and others, 2016), and differential response times of rock glaciers to climate forcing due in part to variations in surface debris thickness and internal structure, details which are not considered here (Knight and others, 2019). Predicting future rock glacier distributions introduces additional uncertainties regarding the stationarity of modeled relationships between covariates and rock glaciers as well as uncertainties in the future climate data stemming from climate models and scenarios. Specifically, the assumption that current rock glaciers are in equilibria with pre-industrial hydroclimatic conditions may overestimate or underestimate rock glacier decline for rock glaciers that have equilibrated to more or less recent conditions, respectively. Future work should quantify these sources of uncertainty and their effects on predicted rock glacier habitat. While the chosen covariates did an excellent job of predicting current rock glacier habitat in calibration and cross validation, future work could incorporate more process-relevant predictors such as a refined metric of headwall area (Janke and Frauenfelder, 2008), some measure of fracturing propensity (Chueca, 1992), and a metric of snow redistribution via wind and avalanching (Kenner and Magnusson, 2017). These refinements would likely improve modeled suitability at known rock glacier locations and decrease the modeled overestimation of suitable area.

### Conclusions

We employed a species distribution model and process-relevant, high-resolution environmental descriptors across the contiguous



**Figure 5.** Distribution of covariates between present (purple) and future (red) time periods, for presently glacierized locations, grouped by suitability change category. For covariates that are not time-varying (bottom row), a single violin is shown for each suitability category. In the first subplot, percent values indicate the percent of modeled glacierized area that falls into each category.



western USA to (1) understand the topographic, geologic and hydro-climatic niche of rock glaciers, (2) project how rock glacier spatial distributions may change with continued climate change and (3) evaluate the possibility of glacier to rock glacier transformation. Our model identified mean annual air temperature and headwall area as the dominant controls on rock glacier spatial distributions, with rock glaciers more likely to be found in areas with mean annual temperatures close to  $-5^{\circ}\text{C}$ , little rain, northern aspects and broad headwalls. Under a scenario in which rock glaciers equilibrate to the present climate, 12.5% of current rock glacier locations are projected to become unsuitable for rock glaciers while total rock glacier habitat across the domain is projected to decline by 48% relative to the preindustrial period. Equilibration to late 21st-century climate under a high-end warming scenario is projected to result in 94% of current rock glacier locations becoming unsuitable and a 99% reduction in suitable rock glacier habitat across the domain. Under future warming, we find limited potential for glacier to rock glacier transformation (2.9% of glacierized area), concentrated in cold, high elevation, moderate precipitation areas.

The impacts of the loss of active rock glaciers in the contiguous western USA will likely be felt most at local scales and in semi-arid regions. Beyond their intrinsic value as features of the mountain landscape, rock glaciers support greater plant, arthropod and bacterial diversity than nearby landscapes (Franklin, 2012; Millar and others, 2015; Fegel and others, 2016) and provide potential climate refugia for pika and cold-adapted fish (Harrington and others, 2017; Millar and Westfall, 2019). Equilibration to future hydroclimate, and the transition from active to inactive or relict, may take hundreds of years (Müller and others, 2016) during which time rock glaciers may continue to provide these services as well as increased contributions to streamflow in semi-arid watersheds (Wagner and others, 2016; Harrington and others, 2018; Brighenti and others, 2019). However, under the high warming scenario considered here, rock glaciers, like snow and glaciers, are likely to eventually disappear from the landscape. In contrast, stabilizing climate at today's temperatures will largely preserve active rock glaciers in this region.

**Supplementary material.** The supplementary material for this article can be found at <https://doi.org/10.1017/jog.2024.56>.

**Acknowledgments.** We appreciate the thorough and insightful comments of Dr Constance Millar and an anonymous reviewer which improved this manuscript. Funding sources include the National Science Foundation's IGERT Program (award 1249400) to A.C.L., USDA-NIFA award (2021-69012-35916) to J.T.A., NASA award (20-2020EPSCoR-0027) to T.C.B. and USFS award (20-CS-11132400-229) to A.G.F.

## References

- Akaike H (1974) A new look at the statistical model identification. *IEEE Transactions on Automatic Control* **19**(6), 716–723. doi: [10.1109/TAC.1974.1100705](https://doi.org/10.1109/TAC.1974.1100705)
- Anderson RS, Anderson LS, Armstrong WH, Rossi MW and Crump SE (2018) Glaciation of alpine valleys: the glacier – debris-covered glacier – rock glacier continuum. *Geomorphology* **311**, 127–142. doi: [10.1016/j.geomorph.2018.03.015](https://doi.org/10.1016/j.geomorph.2018.03.015)
- Angillieri MYE (2010) Application of frequency ratio and logistic regression to active rock glacier occurrence in the Andes of San Juan, Argentina. *Geomorphology* **114**(3), 396–405. doi: [10.1016/j.geomorph.2009.08.003](https://doi.org/10.1016/j.geomorph.2009.08.003)
- Anning DW and Ator SW (2017) Generalized lithology of the conterminous United States [Dataset]. U.S. Geological Survey. doi: [10.5066/F7R78D4N](https://doi.org/10.5066/F7R78D4N)
- Austin MP (2002) Spatial prediction of species distribution: an interface between ecological theory and statistical modelling. *Ecological Modelling* **157**(2–3), 101–118. doi: [10.1016/S0304-3800\(02\)00205-3](https://doi.org/10.1016/S0304-3800(02)00205-3)
- Barsch D (1996) *Rock Glaciers: Indicators for the Present and Former Geocology in High Mountain Environments*. Berlin: Springer, 331p.
- Barsugli JJ and 7 others (2020) Projections of mountain snowpack loss for wolverine denning elevations in the Rocky Mountains. *Earth's Future* **8**. doi: [10.1029/2020EF001537](https://doi.org/10.1029/2020EF001537)
- Bolch T and Gorbunov AP (2014) Characteristics and origin of rock glaciers in northern Tien Shan (Kazakhstan/Kyrgyzstan). *Permafrost and Periglacial Processes* **25**(4), 320–332. doi: [10.1002/ppp.1825](https://doi.org/10.1002/ppp.1825)
- Brazier V, Kirkbride MP and Owens IF (1998) The relationship between climate and rock glacier distribution in the Ben Ohau Range, New Zealand. *Geografiska Annaler: Series A, Physical Geography* **80**(3–4), 193–207. doi: [10.1111/j.0435-3676.1998.00037.x](https://doi.org/10.1111/j.0435-3676.1998.00037.x)
- Brenning A and Azócar GF (2010) Statistical analysis of topographic and climatic controls and multispectral signatures of rock glaciers in the dry Andes, Chile ( $27^{\circ}$ – $33^{\circ}\text{S}$ ). *Permafrost and Periglacial Processes* **21**(1), 54–66. doi: [10.1002/ppp.670](https://doi.org/10.1002/ppp.670)
- Brenning A and Trombotto D (2006) Logistic regression modeling of rock glacier and glacier distribution: topographic and climatic controls in the semi-arid Andes. *Geomorphology* **81**(1–2), 141–154.
- Brighenti S and 5 others (2019) Ecosystem shifts in Alpine streams under glacier retreat and rock glacier thaw: a review. *Science of The Total Environment* **675**, 542–559. doi: [10.1016/j.scitotenv.2019.04.221](https://doi.org/10.1016/j.scitotenv.2019.04.221)
- Charbonneau AA and Smith DJ (2018) An inventory of rock glaciers in the central British Columbia Coast Mountains, Canada, from high resolution Google Earth imagery. *Arctic, Antarctic, and Alpine Research* **50**(1), e1489026. doi: [10.1080/15230430.2018.1489026](https://doi.org/10.1080/15230430.2018.1489026)
- Chueca J (1992) A statistical analysis of the spatial distribution of rock glaciers, Spanish Central Pyrenees. *Permafrost and Periglacial Processes* **3**(3), 261–265. doi: [10.1002/ppp.3430030316](https://doi.org/10.1002/ppp.3430030316)
- Comino E, Fiorucci A, Rosso M, Terenzi A and Treves A (2021) Vegetation and glacier trends in the area of the maritime Alps natural park (Italy): MaxEnt application to predict habitat development. *Climate* **9**(4), 54. doi: [10.3390/cli9040054](https://doi.org/10.3390/cli9040054)
- Convertino M, Muñoz-Carpena R, Chu-Agor ML, Kiker GA and Linkov I (2014) Untangling drivers of species distributions: global sensitivity and uncertainty analyses of MaxEnt. *Environmental Modelling & Software* **51**, 296–309. doi: [10.1016/j.envsoft.2013.10.001](https://doi.org/10.1016/j.envsoft.2013.10.001)
- Cuffey KM and Paterson WSB (2010) *The Physics of Glaciers*. Burlington: Elsevier.
- Delaloye R, Lambiel C and Gärtner-Roer I (2010) Overview of rock glacier kinematics research in the Swiss Alps: seasonal rhythm, interannual variations and trends over several decades. *Geographica Helvetica* **65**(2), 135–145. doi: [info:doi/10.5167/uzh-38562](https://doi.org/10.5167/uzh-38562)
- Deng Y, Wilson JP and Bauer BO (2007) DEM resolution dependencies of terrain attributes across a landscape. *International Journal of Geographical Information Science* **21**(2), 187–213. doi: [10.1080/13658810600894364](https://doi.org/10.1080/13658810600894364)
- Duque-Lazo J, van Gils H, Groen TA and Navarro-Cerrillo RM (2016) Transferability of species distribution models: the case of *Phytophthora cinnamomi* in southwest Spain and southwest Australia. *Ecological Modelling* **320**, 62–70. doi: [10.1016/j.ecolmodel.2015.09.019](https://doi.org/10.1016/j.ecolmodel.2015.09.019)
- Elith J and Leathwick JR (2009) Species Distribution Models: Ecological Explanation and Prediction Across Space and Time. *Annual Review of Ecology, Evolution, and Systematics* **40**, 677–697. doi: [10.1146/annurev.ecolsys.110308.120159](https://doi.org/10.1146/annurev.ecolsys.110308.120159)
- Elith J and 26 others (2006) Novel methods improve prediction of species' distributions from occurrence data. *Ecography* **29**(2), 129–151. doi: [10.1111/j.2006.0906-7590.04596.x](https://doi.org/10.1111/j.2006.0906-7590.04596.x)
- Fegel TS, Baron JS, Fountain AG, Johnson GF and Hall EK (2016) The differing biogeochemical and microbial signatures of glaciers and rock glaciers. *Journal of Geophysical Research: Biogeosciences* **121**(3), 919–932. doi: [10.1002/2015JG003236](https://doi.org/10.1002/2015JG003236)
- Florentine C, Harper J, Fagre D, Moore J and Peitzsch E (2018) Local topography increasingly influences the mass balance of a retreating cirque glacier. *The Cryosphere* **12**(6), 2109–2122. doi: [10.5194/tc-12-2109-2018](https://doi.org/10.5194/tc-12-2109-2018)
- Fountain AG (2006) GLIMS glacier database [Dataset]. National Snow and Ice Data Center. doi: [10.7265/N5V98602](https://doi.org/10.7265/N5V98602)
- Fountain AG, Glenn B and Basagic IV HJ (2017) The geography of glaciers and perennial snowfields in the American west. *Arctic, Antarctic, and Alpine Research* **49**(3), 391–410. doi: [10.1657/AAAR0017-003](https://doi.org/10.1657/AAAR0017-003)
- Fountain AG, Glenn B and Mcneil C (2023) Inventory of glaciers and perennial snowfields of the conterminous USA. *Earth System Science Data* **15**, 4077–4104. doi: [10.5194/essd-15-4077-2023](https://doi.org/10.5194/essd-15-4077-2023)
- Franklin RS (2012) *Climatic and Ecological Implications of Shrub-Chronologies at Rock Glacier Sites of the Eastern Sierra Nevada*

- Range, California, U.S.A (Electronic Dissertation). University of Arizona. Available at [https://repository.arizona.edu/bitstream/handle/10150/242393/azu\\_etd\\_12330\\_sip1\\_m.pdf?sequence=1&isAllowed=y](https://repository.arizona.edu/bitstream/handle/10150/242393/azu_etd_12330_sip1_m.pdf?sequence=1&isAllowed=y)
- Frans C, Istanbuloglu E, Lettenmaier DP, Fountain AG and Riedel J** (2018) Glacier recession and the response of summer streamflow in the Pacific Northwest United States, 1960–2009. *Water Resources Research* **54**, 6202–6225. doi: [10.1029/2017WR021764](https://doi.org/10.1029/2017WR021764)
- Frauenfelder R, Haerberli W and Hoelzle M** (2003) Rockglacier occurrence and related terrain parameters in a study area of the Eastern Swiss Alps. *Proceedings of the Eighth International Permafrost Conference on Permafrost*, Swets & Zeitlinger, Lisse, Netherlands, pp. 253–258.
- Gesch DB, Evans GA, Oimoen MJ and Arundel S** (2018) The national elevation dataset. American Society for Photogrammetry and Remote Sensing; USGS Publications Warehouse, pp. 83–110. Available at <http://pubs.er.usgs.gov/publication/70201572>
- Haerberli W and 10 others** (2006) Permafrost creep and rock glacier dynamics. *Permafrost and Periglacial Processes* **17**(3), 189–214. doi: [10.1002/ppp.561](https://doi.org/10.1002/ppp.561)
- Harrington JS, Hayashi M and Kurylyk BL** (2017) Influence of a rock glacier spring on the stream energy budget and cold-water refuge in an alpine stream. *Hydrological Processes* **31**(26), 4719–4733. doi: [10.1002/hyp.11391](https://doi.org/10.1002/hyp.11391)
- Harrington JS, Mozil A, Hayashi M and Bentley LR** (2018) Groundwater flow and storage processes in an inactive rock glacier. *Hydrological Processes* **32**(20), 3070–3088. doi: [10.1002/hyp.13248](https://doi.org/10.1002/hyp.13248)
- Harris SA and Pedersen DE** (1998) Thermal regimes beneath coarse blocky materials. *Permafrost and Periglacial Processes* **9**, 107–120. doi: [10.1002/\(SICI\)1099-1530\(199804/06\)9:2<107::AID-PPP277>3.0.CO;2-G](https://doi.org/10.1002/(SICI)1099-1530(199804/06)9:2<107::AID-PPP277>3.0.CO;2-G)
- Hijmans RJ, Phillips S, Leathwick J and Elith J** (2020) *Dismo: Species Distribution Modeling. R package version 1.3-3*. (1.3-3) [Computer software]. Available at <https://CRAN.R-project.org/package=dismo>
- Hoffman M and Fountain AG** (2016) GLIMS glacier database [Dataset]. National Snow and Ice Data Center. doi: [10.7265/N5V98602](https://doi.org/10.7265/N5V98602)
- Huggel C, Carey M, Clague JJ and Kaab A** (eds) (2015) *The High-Mountain Cryosphere: Environmental Changes and Human Risks*. Cambridge, UK: Cambridge University Press. doi: [10.1017/CBO9781107588653](https://doi.org/10.1017/CBO9781107588653)
- Huss M and 13 others** (2017) Toward mountains without permanent snow and ice. *Earth's Future* **5**(5), 2016EF000514. doi: [10.1002/2016EF000514](https://doi.org/10.1002/2016EF000514)
- Janke J and Frauenfelder R** (2008) The relationship between rock glacier and contributing area parameters in the Front Range of Colorado. *Journal of Quaternary Science* **23**(2), 153–163. doi: [10.1002/jqs.1133](https://doi.org/10.1002/jqs.1133)
- Johnson G** (2020) Active rock glacier inventory of the contiguous United States (PSUARGI). PANGAEA [Dataset]. doi: [10.1594/PANGAEA.918585](https://doi.org/10.1594/PANGAEA.918585)
- Johnson BG, Thackray GD and Van Kirk R** (2007) The effect of topography, latitude, and lithology on rock glacier distribution in the Lemhi Range, central Idaho, USA. *Geomorphology* **91**(1), 38–50. doi: [10.1016/j.geomorph.2007.01.023](https://doi.org/10.1016/j.geomorph.2007.01.023)
- Johnson G, Chang H and Fountain A** (2021) Active rock glaciers of the contiguous United States: geographic information system inventory and spatial distribution patterns. *Earth System Science Data* **13**, 3979–3994. doi: [10.5194/essd-13-3979-2021](https://doi.org/10.5194/essd-13-3979-2021)
- Jones DB, Harrison S, Anderson K and Betts RA** (2018) Mountain rock glaciers contain globally significant water stores. *Scientific Reports* **8**(1), 2834. doi: [10.1038/s41598-018-21244-w](https://doi.org/10.1038/s41598-018-21244-w)
- Jones DB, Harrison S and Anderson K** (2019) Mountain glacier-to-rock glacier transition. *Global and Planetary Change* **181**, 102999. doi: [10.1016/j.gloplacha.2019.102999](https://doi.org/10.1016/j.gloplacha.2019.102999)
- Kääb A, Chiarle M, Raup B and Schneider C** (2007) Climate change impacts on mountain glaciers and permafrost. *Global and Planetary Change* **56**(1–2), vii–ix. doi: [10.1016/j.gloplacha.2006.07.008](https://doi.org/10.1016/j.gloplacha.2006.07.008)
- Kass JM and 7 others** (2021) ENMeval 2.0: redesigned for customizable and reproducible modeling of species' niches and distributions. *Methods in Ecology and Evolution* **12**(9), 1602–1608. doi: [10.1111/2041-210X.13628](https://doi.org/10.1111/2041-210X.13628)
- Kenner R and Magnusson J** (2017) Estimating the effect of different influencing factors on rock glacier development in two regions in the Swiss Alps: effects of different influencing factors on rock glacier development. *Permafrost and Periglacial Processes* **28**(1), 195–208. doi: [10.1002/ppp.1910](https://doi.org/10.1002/ppp.1910)
- Knight J, Harrison S and Jones DB** (2019) Rock glaciers and the geomorphological evolution of deglaciating mountains. *Geomorphology* **324**, 14–24. doi: [10.1016/j.geomorph.2018.09.020](https://doi.org/10.1016/j.geomorph.2018.09.020)
- Körner C, Paulsen J and Spehn EM** (2011) A definition of mountains and their bioclimatic belts for global comparisons of biodiversity data. *Alpine Botany* **121**(2), 73–78. doi: [10.1007/s00035-011-0094-4](https://doi.org/10.1007/s00035-011-0094-4)
- Liu C, Newell G and White M** (2016) On the selection of thresholds for predicting species occurrence with presence-only data. *Ecology and Evolution* **6**(1), 337–348. doi: [10.1002/ece3.1878](https://doi.org/10.1002/ece3.1878)
- Liu C and 17 others** (2017) Continental-scale convection-permitting modeling of the current and future climate of North America. *Climate Dynamics* **49**(1–2), 71–95. doi: [10.1007/s00382-016-3327-9](https://doi.org/10.1007/s00382-016-3327-9)
- Lute AC, Abatzoglou J and Link T** (2022) Snowclim v1.0: high-resolution snow model and data for the western United States. *Geoscientific Model Development* **15**(13), 5045–5071. doi: [10.5194/gmd-15-5045-2022](https://doi.org/10.5194/gmd-15-5045-2022)
- Manquehual-Cheque F and Somos-Valenzuela M** (2021) Climate change refugia for glaciers in Patagonia. *Anthropocene* **33**, 100277. doi: [10.1016/j.ancene.2020.100277](https://doi.org/10.1016/j.ancene.2020.100277)
- Marcet M and 6 others** (2021) Rock glaciers throughout the French Alps accelerated and destabilised since 1990 as air temperatures increased. *Communications Earth & Environment* **2**(1), 81. doi: [10.1038/s43247-021-00150-6](https://doi.org/10.1038/s43247-021-00150-6)
- Matsuoka N and Ikeda A** (2001) Geological control on the distribution and characteristics of talus-derived rock glaciers. Annual Report. Institute of Geoscience, University of Tsukuba, no. 27, pp. 11–16.
- Merow C, Smith MJ and Silander JA** (2013) A practical guide to MaxEnt for modeling species' distributions: what it does, and why inputs and settings matter. *Ecography* **36**, 1058–1069. doi: [10.1111/j.1600-0587.2013.07872.x](https://doi.org/10.1111/j.1600-0587.2013.07872.x)
- Miller C and Westfall R** (2008) Rock glaciers and related periglacial landforms in the Sierra Nevada, CA, USA; inventory, distribution and climatic relationships. *Quaternary International* **188**(1), 90–104. doi: [10.1016/j.quaint.2007.06.004](https://doi.org/10.1016/j.quaint.2007.06.004)
- Miller CI and Westfall RD** (2019) Geographic, hydrological, and climatic significance of rock glaciers in the Great Basin, USA. *Arctic, Antarctic, and Alpine Research* **51**(1), 232–249. doi: [10.1080/15230430.2019.1618666](https://doi.org/10.1080/15230430.2019.1618666)
- Miller CI, Westfall RD and Delany DL** (2013) Thermal and hydrologic attributes of rock glaciers and periglacial talus landforms: Sierra Nevada, California, USA. *Quaternary International* **310**, 169–180. doi: [10.1016/j.quaint.2012.07.019](https://doi.org/10.1016/j.quaint.2012.07.019)
- Miller C and 7 others** (2015) Potential climatic refugia in semi-arid, temperate mountains: plant and arthropod assemblages associated with rock glaciers, talus slopes, and their forefield wetlands, Sierra Nevada, California, USA. *Quaternary International* **387**, 106–121. doi: [10.1016/j.quaint.2013.11.003](https://doi.org/10.1016/j.quaint.2013.11.003)
- Molnar P, Anderson RS and Anderson SP** (2007) Tectonics, fracturing of rock, and erosion. *Journal of Geophysical Research* **112**, F03014. doi: [10.1029/2005JF000433](https://doi.org/10.1029/2005JF000433)
- Monnier S and Kinnard C** (2015) Reconsidering the glacier to rock glacier transformation problem: new insights from the central Andes of Chile. *Geomorphology* **238**, 47–55. doi: [10.1016/j.geomorph.2015.02.025](https://doi.org/10.1016/j.geomorph.2015.02.025)
- Monnier S and Kinnard C** (2017) Pluri-decadal (1955–2014) evolution of glacier-rock glacier transitional landforms in the central Andes of Chile (30–33 S). *Earth Surface Dynamics* **5**, 493–509. doi: [10.5194/esurf-5-493-2017](https://doi.org/10.5194/esurf-5-493-2017)
- Moore RD and 7 others** (2009) Glacier change in western North America: influences on hydrology, geomorphic hazards and water quality. *Hydrological Processes* **23**(1), 42–61. doi: [10.1002/hyp.7162](https://doi.org/10.1002/hyp.7162)
- Morris S** (1981) Topoclimatic factors and the development of rock glacier facies, Sangre de Cristo Mountains, southern Colorado. *Arctic and Alpine Research* **13**(3), 329–338.
- Mote PW, Li S, Lettenmaier DP, Xiao M and Engel R** (2018) Dramatic declines in snowpack in the western US. *NPJ Climate and Atmospheric Science* **1**(1). doi: [10.1038/s41612-018-0012-1](https://doi.org/10.1038/s41612-018-0012-1)
- Müller J, Vieli A and Gärtner-Roer I** (2016) Rockglaciers on the run – understanding rockglacier landform evolution and recent changes from numerical flow modeling. *The Cryosphere* **10**(6), 2865–2886. doi: [10.5194/tc-10-2865-2016](https://doi.org/10.5194/tc-10-2865-2016)
- Munroe JS** (2018) Distribution, evidence for internal ice, and possible hydrologic significance of rock glaciers in the Uinta Mountains, Utah, USA. *Quaternary Research* **90**(1), 50–65. doi: [10.1017/qua.2018.24](https://doi.org/10.1017/qua.2018.24)
- Obu J and 20 others** (2019) Northern Hemisphere permafrost map based on TTOP modelling for 2000–2016 at 1 km<sup>2</sup> scale. *Earth-Science Reviews* **193**, 299–316. doi: [10.1016/j.earscirev.2019.04.023](https://doi.org/10.1016/j.earscirev.2019.04.023)
- Phillips SJ and Dudík M** (2008) Modeling of species distributions with Maxent: new extensions and a comprehensive evaluation. *Ecography* **31**(2), 161–175. doi: [10.1111/j.0906-7590.2008.5203.x](https://doi.org/10.1111/j.0906-7590.2008.5203.x)
- Phillips SJ, Anderson RP and Schapire RE** (2006) Maximum entropy modeling of species geographic distributions. *Ecological Modelling* **190**(3), 231–259. doi: [10.1016/j.ecolmodel.2005.03.026](https://doi.org/10.1016/j.ecolmodel.2005.03.026)
- Radić V and 5 others** (2014) Regional and global projections of twenty-first century glacier mass changes in response to climate scenarios from global

- climate models. *Climate Dynamics* 42(1–2), 37–58. doi: [10.1007/s00382-013-1719-7](https://doi.org/10.1007/s00382-013-1719-7)
- R Core Team** (2020) *R: A Language and Environment for Statistical Computing*. Vienna: R Foundation for Statistical Computing. Available at <https://www.R-project.org/>
- Rounce DR and 12 others** (2023) Global glacier change in the 21st century: every increase in temperature matters. *Science* 379(6627), 78–83. doi: [10.1126/science.abo1324](https://doi.org/10.1126/science.abo1324)
- Sevestre H and Benn DI** (2015) Climatic and geometric controls on the global distribution of surge-type glaciers: implications for a unifying model of surging. *Journal of Glaciology* 61(228), 646–662. doi: [10.3189/2015JG14J136](https://doi.org/10.3189/2015JG14J136)
- Taylor KE, Stouffer RJ and Meehl GA** (2012) An overview of CMIP5 and the experiment design. *Bulletin of the American Meteorological Society* 93(4), 485–498. doi: [10.1175/BAMS-D-11-00094.1](https://doi.org/10.1175/BAMS-D-11-00094.1)
- Trcka A** (2020) *Inventory of Rock Glaciers in the American West and their Topography and Climate (Electronic Thesis)*. Portland State University. doi: [10.15760/etd.7509](https://doi.org/10.15760/etd.7509). Available at: [https://pdxscholar.library.pdx.edu/cgi/viewcontent.cgi?article=6710&context=open\\_access\\_etds](https://pdxscholar.library.pdx.edu/cgi/viewcontent.cgi?article=6710&context=open_access_etds)
- US Environmental Protection Agency** (2013) Level III ecoregions of the conterminous United States [Dataset]. US EPA Office of Research and Development (ORD) – National Health and Environmental Effects Research Laboratory (NHEERL). Available at [ftp://ftp.epa.gov/wed/ecoregions/us/usl3\\_no\\_st.zip](ftp://ftp.epa.gov/wed/ecoregions/us/usl3_no_st.zip)
- Valavi R, Elith J, Lahoz-Monfort JJ and Guillera-Arroita G** (2019) BlockCV: an R package for generating spatially or environmentally separated folds for *k*-fold cross-validation of species distribution models. *Methods in Ecology and Evolution* 10(2), 225–232. doi: [10.1111/2041-210X.13107](https://doi.org/10.1111/2041-210X.13107)
- Wagner T, Pauritsch M and Winkler G** (2016) Impact of relict rock glaciers on spring and stream flow of alpine watersheds: examples of the Niedere Tauern Range, eastern Alps (Austria). *Austrian Journal of Earth Sciences* 109(1), 84–98. doi: [10.17738/ajes.2016.0006](https://doi.org/10.17738/ajes.2016.0006)
- Wahrhaftig C and Cox A** (1959) Rock glaciers in the Alaska Range. *GSA Bulletin* 70(4), 383–436. doi: [10.1130/0016-7606\(1959\)70\[383:RGITAR\]2.0.CO;2](https://doi.org/10.1130/0016-7606(1959)70[383:RGITAR]2.0.CO;2)
- Wang T and 10 others** (2021) Simulation of the potential distribution of the glacier based on maximum entropy model in the Tianshan Mountains, China. *Water* 13(11), 1541. doi: [10.3390/w13111541](https://doi.org/10.3390/w13111541)