

Effects of oat-bran concentrate on rat serum lipids and liver fat infiltration

BY Y. MÄLKKI¹, R. TÖRRÖNEN², K. PELKONEN², O. MYLLYMÄKI¹,
O. HÄNNINEN² AND K. SYRJÄNEN³

¹Technical Research Centre of Finland, Food Research Laboratory, PO Box 203, FIN-02151 Espoo, Finland

Departments of ²Physiology and ³Pathology, University of Kuopio, PO Box 1627, FIN-70211 Kuopio, Finland

(Received 17 June 1992 – Accepted 4 February 1993)

Oat bran concentrated with respect to both soluble and insoluble dietary fibre was fed to adult rats, and its effects on serum cholesterol and liver fat infiltration were studied. The feeds contained 15, 30 or 45 g β -glucan/kg, except in control groups where the fibre of the feed was cellulose. Half the experimental groups received the feeds with an addition of 10 g cholesterol and 2 g cholic acid/kg in order to create an hypercholesterolaemic condition. In normocholesterolaemic rats the concentrated oat bran did not cause any significant changes in serum cholesterol concentrations, but reduced liver weight compared with control group rats fed on the cellulose-containing diet. In hypercholesterolaemic rats the concentrated oat bran reduced serum total cholesterol and increased high-density-lipoprotein cholesterol concentration. The effect was seen already at the 15 g/kg concentration of β -glucan, the higher doses tested did not significantly improve the effect. Infiltration of fat into liver cells, especially in the periportal areas, was observed only in hypercholesterolaemic animals. The fat infiltration was accentuated in proportion to the amount of oat-bran concentrate fed.

Oat bran: Cholesterol: Liver: Rat

In recent years the hypocholesterolaemic effect of oat fibre has been extensively studied both in animal and clinical experiments, and preparations concentrated with respect to the active component, β -glucan, are being developed, as reviewed by Paton (1991). The majority of the animal studies on the physiological effects of oat fibre have been performed using rats. However, the rat is relatively resistant to the induction of hypercholesterolaemia and atherosclerosis (Carroll & Feldman, 1989). Compared with man, on a normal diet it has a lower (about 2.5 mmol/l) serum total cholesterol concentration and a higher value (0.4–0.6) for high-density-lipoprotein (HDL)-cholesterol:total cholesterol. To create a hypercholesterolaemic condition in rats it has been common practice to include lipotropic substances, most often cholesterol and cholic acid or other bile acids, in the feed (Carroll & Feldman, 1989; Shinnick *et al.* 1990). Of sixteen recent rat studies on the hypocholesterolaemic effects of oat bran, in four studies only (Illman & Topping, 1985; Ranhotra *et al.* 1990; Mongeau *et al.* 1991; Mälkki *et al.* 1992) were lipotropic substances not used. Addition of cholesterol and bile acids to the diet creates an artificial state where HDL-cholesterol:total cholesterol is about 0.2 (e.g. Ney *et al.* 1988). It has resulted also in an accumulation of fat in the liver, independently of addition of insoluble (Lopez-Guisa *et al.* 1988) or soluble (Shinnick *et al.* 1990) fibre components. According to Ney *et al.* (1988), soluble oat fibre tends to normalize lipoprotein composition in cholesterol-fed rats.

However, in studies in which young rats have been used, hypocholesterolaemic effects of oat bran or its fractions have been observed even without an induced hypercholesterolaemia (Ranhotra *et al.* 1990; Mongeau *et al.* 1991; Mälkki *et al.* 1992). In the long-term experiment of Mongeau *et al.* (1991), a significant hypocholesterolaemic effect of oat bran was observed at week 8 on the experimental diet without added cholesterol or cholic acid, but not at week 29, and with male rats only. The hypocholesterolaemic effect and also an elevation of HDL-cholesterol were considerably greater in young rats when the soluble fibre was given as oat-bran concentrates than when given as untreated oat bran (Ranhotra *et al.* 1990; Mälkki *et al.* 1992). The relative efficiencies of the preparations were shown to depend on the viscosity and molecular weight of the β -glucan (Mälkki *et al.* 1992).

The aim of the present study was to test the effect of oat-bran concentrate in adult rats, both normocholesterolaemic and hypercholesterolaemic, and the effect on fat infiltration of the liver, in order to forecast its potential for hypocholesterolaemic effects and its safety in human nutrition. The dose responses were also investigated.

MATERIALS AND METHODS

Oat-bran concentrate

The oat bran used was a commercial product from Raisio Group, Finland, derived from a mixture of domestically-grown oat varieties and produced by conventional dry milling after a heat treatment at 100° for 90 min. Oat-bran concentrate was prepared on a pilot scale from oat bran by reducing non-fibre components by wet milling in 70% (w/w) ethanol solution (Autio *et al.* 1992). The oat-bran concentrate thus obtained had the following composition (g/kg): protein ($N \times 5.7$) 197, fat 88, total carbohydrate 561, β -glucan 189, ash 44, moisture 110.

Experimental design and diets

Feeds adjusted to constant levels of fat, protein, vitamins and minerals, and with increasing levels of β -glucan originating from oat-bran concentrate were used. Half the experimental groups received the feeds supplemented with 10 g cholesterol and 2 g cholic acid/kg. The composition of the feeds is presented in Table 1.

Animal experiments

Adult male Mol:SPRD rats obtained from Møllegaard ApS, Ejby, Denmark were used in the experiment which was performed from 15 December 1990 to 5 January 1991. After arrival the rats were adapted for 9 d before the start of the experiment. During both the adaptation period and the experiment the rats were housed in stainless-steel cages (420 × 250 × 150 mm; open upwards), two rats in each cage, and fed standard rat feed during adaptation. For the experiment the animals, weighing 241–295 g, were divided into groups of ten with approximately the same weight distribution in each group. The animal room was regulated to a temperature of $20 \pm 1^\circ$ and relative humidity of $55 \pm 10\%$, it had fifteen to twenty air changes/h and a light–dark cycle of 14–10 h. The test feeds, given *ad lib* in powder form, were adjusted to contain oat-bran concentrate corresponding to 15, 30 and 45 g β -glucan/kg. During the experiment the identity of the test feeds was unknown to the experimenters. Feed consumption was recorded for the two rats together in each cage twice weekly. The animals were weighed individually once weekly. At the beginning of the experiment and after 1, 2 and 3 weeks, blood samples were taken between 08.00 and 12.00 hours from the saphenous vein after 14–20 h fasting. After the last blood sample the animals were weighed, killed by guillotine decapitation and bled. After weighing, the liver samples were taken, frozen in liquid N₂, and used for an histochemical examination. The

Table 1. *Composition of the experimental feeds (g/kg diet)*

Feed ...	M	I	K	L	H	N	O	P
Oat-bran concentrate*	—	79	159	238	—	79	159	238
Cellulose	72	—	—	—	72	—	—	—
Vitamin mixture†	10	10	10	10	10	10	10	10
Mineral mixture‡	39	39	39	39	39	39	39	39
Soya-bean oil	50	43	36	29	50	43	36	29
Maize starch	678	707	653	622	690	695	641	610
Casein	140	121	103	62	140	121	103	62
Cholesterol	—	—	—	—	10	10	10	10
Cholic acid	—	—	—	—	2	2	2	2
Protein	120	120	120	120	120	120	120	120
Fat	50	50	50	50	50	50	50	50
β -Glucan	—	15	30	45	—	15	30	45

* Composition (g/kg): protein (N \times 5.7) 197, fat 88, total carbohydrate 561, β -glucan 189, ash 44, moisture 110.

† Vitamin mixture 76 (American Institute of Nutrition, 1977).

‡ Prepared according to National Research Council requirements (NRC, 1987).

research plan was approved by the Ethical Committee for Animal Experiments of the University of Kuopio.

Analytical methods

The β -glucan contents of the preparations were analysed according to the method of McCleary & Glennie-Holmes (1985).

Serum total cholesterol concentrations were analysed using an enzymic test kit (CHOD-PAP, Catalogue no. 237574; Boehringer Mannheim GmbH, Germany). Cholesterol in the HDL fraction was analysed after precipitation of very-low-density (VLDL) and low-density lipoproteins (LDL) with dextran sulphate and $MgCl_2$. Serum triacylglycerol concentrations were assayed using an enzymic test kit (GPO-PAP, Catalogue no. 701904; Boehringer Mannheim). Serum alanine aminotransferase (EC 2.6.1.2) activities were determined according to the Scandinavian recommendations (The Committee on Enzymes, The Scandinavian Society for Clinical Chemistry and Clinical Physiology, 1974) using the reagents of Medix Biochemica (Kauniainen, Finland).

Histopathology

Half the liver from each animal was used for histopathological study. The samples were fixed in neutral formaldehyde (100 ml/l), embedded in paraffin and processed into 5 μ m sections for light microscopy according to routine procedures. The sections were stained with haematoxylin-eosin for histopathological assessment.

The sections were viewed by a single pathologist who was unaware of the diets fed to the animals. The general morphology of each liver was assessed first at low-power magnification to provide a general impression of the histological changes to be anticipated. The changes observed were classified as previously described either as a microvesicular fatty change or a macrovesicular fatty change (Craig, 1990). These changes were classified as mild (type I) and severe (type II) fatty changes, and graded according to the share of hepatocytes affected.

Statistics

Statistical significances of the differences were analysed using StatView 512+™ program (BrainPower, Inc., Calabasas, CA, USA) on an Apple Macintosh computer. Data for each group at different time-points were analysed by single-factor analysis of variance for

Table 2. *Effects of dietary oat-bran concentrate with and without added dietary cholesterol and cholic acid on growth, liver weight and serum lipid concentrations in adult male Mol:SPRD rats†*

(Mean values and standard deviations for ten rats/group)

Feed ...	M		I		K		L		H		N		O		P	
	Mean	SD	Mean	SD	Mean	SD	Mean	SD	Mean	SD	Mean	SD	Mean	SD	Mean	SD
β -Glucan (g/kg diet) ...	0	—	15	—	30	—	45	—	0	+	15	+	30	+	45	+
Cholesterol + cholic acid ...	—	—	—	—	—	—	—	—	+	+	+	+	+	+	+	+
Total feed consumption (g)	5133		4512		4593		4673		4571		4559		4392		5182	
Initial body wt (g)	275.9	11.4	264.8*	11.9	266.2	12.0	267.0	10.3	266.4	12.0	272.8	11.8	273.1	11.0	272.0	14.7
Final body wt† (g)	354.8	18.1	360.6	19.5	360.3	16.5	356.0	15.1	344.1	21.7	361.7	18.4	354.9	17.6	372.6	26.0
Wt gain (g)	78.9	13.7	95.8**	11.1	94.1**	9.0	89.0	12.5	77.7	12.7	88.9*	9.0	81.8	10.5	100.6***	13.4
Liver wt (g)	13.4	1.6	9.9***	1.0	10.4***	0.6	10.5***	0.6	15.0	2.0	13.9	1.4	13.4	1.7	15.0	2.1
Relative liver wt (g/kg)	37.5	3.0	28.4***	1.8	29.8***	1.4	30.1***	1.1	43.8	3.8	39.6*	3.3	38.5**	3.4	41.2	4.0

Mean values were significantly different from those of the control group (0 g β -glucan/kg diet) (*t* test for unpaired data): * $P < 0.05$, ** $P < 0.01$, *** $P < 0.001$.

† For details of diets and procedures, see Table 1 and pp. 768–771.

‡ Body weight before the last blood sample.

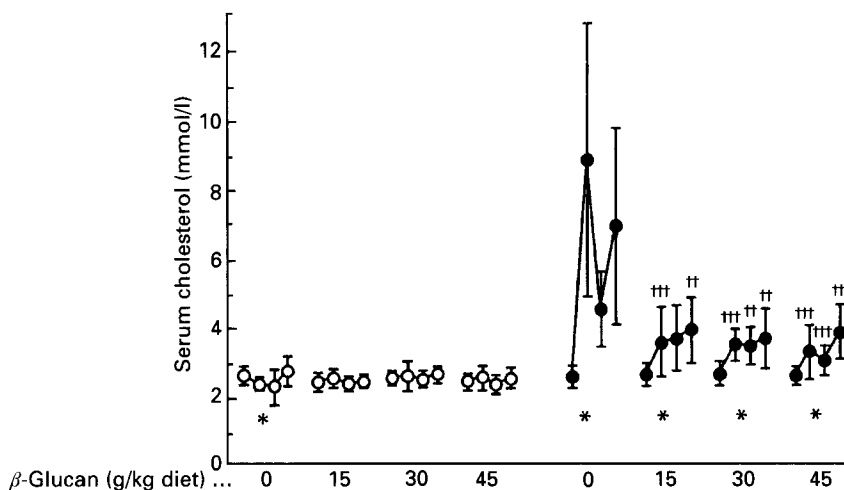


Fig. 1. Effect of dietary oat-bran concentrate (0, 15, 30 and 45 g β -glucan/kg) on serum total cholesterol concentration in rats fed on diets with (●) and without (○) added cholesterol and cholic acid. The four consecutive points in each group represent the values at the start and at weeks 1, 2 and 3 of the experiment. Values are means and standard deviations represented by vertical bars for ten rats/group. Mean values for different time-points within each group were significantly different (ANOVA): * $P < 0.05$. Mean values were significantly different from those for the control group (t test for unpaired values): ††† $P < 0.01$, †††† $P < 0.001$.

repeated measures (ANOVA). Differences between the control (cellulose) and oat-fibre groups and between the two control groups (with and without lipotropic substances) were tested by a two-tailed t test for unpaired data. Values of $P < 0.05$ were considered statistically significant.

RESULTS

In rats without added lipotropic substances in the diet, oat-bran concentrate increased weight gain and reduced relative liver weight compared with the cellulose control group (Table 2). Oat-bran concentrate had no consistent effect on serum total cholesterol or HDL-cholesterol (Figs. 1 and 2). An increase in serum triacylglycerols from the initial values was observed for all groups (Fig. 3), but varied inconsistently with regard to time and dose of oat-bran concentrate.

Comparison of the effects of the control feeds with (feed H) and without (feed M) lipotropic substances showed that supplementation of the diets with 10 g cholesterol and 2 g cholic acid/kg did not affect the weight gain, but increased the relative liver weight ($P < 0.001$, t test). It clearly increased serum total cholesterol level after 1, 2 and 3 weeks ($P < 0.001$) and decreased serum HDL-cholesterol level after 3 weeks ($P < 0.001$). Serum triacylglycerol level was significantly higher only after 2 weeks ($P < 0.05$).

In rats with induced hypercholesterolaemia, oat-bran concentrate also caused a greater weight gain and lower relative liver weights than those in the cellulose control group (Table 2). It significantly attenuated the increase in total cholesterol and decrease in HDL-cholesterol caused by the cholesterol and cholic acid feeding (Figs 1 and 2). No significant dose–response effect was observed, i.e. even the lowest concentration tested, corresponding to 15 g β -glucan/kg in the feed, gave rise to an attenuating effect which was similar to the effects obtained with the higher concentrations of β -glucan tested, although a slight non-significant tendency for a decrease in total cholesterol and an increase in HDL-cholesterol with increasing content of β -glucan in the feed was observed. Serum triacylglycerols increased in all groups from the initial values before the experimental diets were given (Fig.

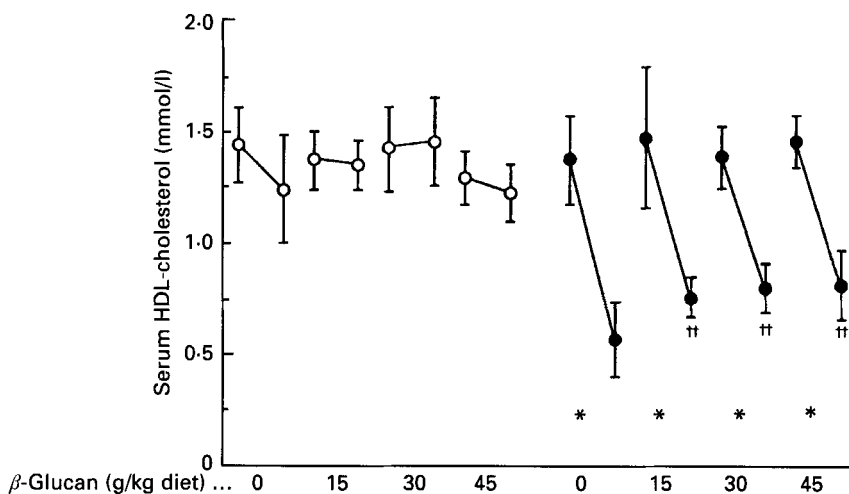


Fig. 2. Effect of dietary oat-bran concentrate (0, 15, 30 and 45 g β -glucan/kg) on serum high-density-lipoprotein (HDL)-cholesterol concentration in rats fed on diets with (●) and without (○) added cholesterol and cholic acid. The two consecutive points in each group represent the values at the start and at week 3 of the experiment. Values are means and standard deviations, represented by vertical bars for ten rats/group. Mean values for different time points within each group were significantly different (ANOVA): * $P < 0.05$. Mean values were significantly different from those for the control group (t test for unpaired values): †† $P < 0.01$.

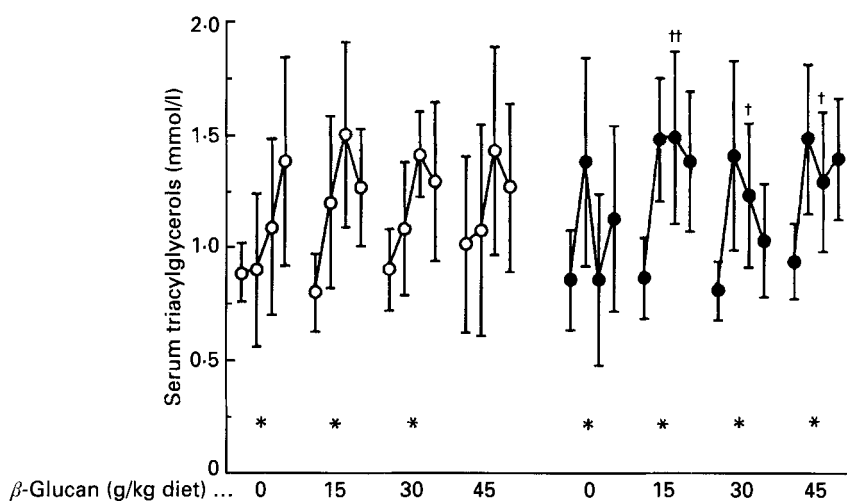


Fig. 3. Effect of dietary oat-bran concentrate (0, 15, 30 and 45 g β -glucan/kg) on serum triacylglycerol concentration in rats fed on diets with (●) and without (○) added cholesterol and cholic acid. The four consecutive points in each group represent the values at the start and at weeks 1, 2 and 3 of the experiment. Values are means and standard deviations, represented by vertical bars for ten rats/group. Mean values for different time-points within each group were significantly different (ANOVA): * $P < 0.05$. Mean values were significantly different from those for the control group (t test for unpaired values): † $P < 0.05$, †† $P < 0.01$, ††† $P < 0.001$.

3), but there was no difference between the cholesterol and cholic acid-fed and normocholesterolaemic groups, nor between the groups fed on cellulose or oat-bran concentrate.

Lipid infiltration into the liver occurred only in the hypercholesterolaemic rats. The only marked abnormality was the fatty change. In the milder type of changes the fat was in small

Table 3. *Fatty changes in the livers of hypercholesterolaemic rats fed on diets containing different amounts of oat-bran concentrate (0–45 g β -glucan/kg)*

(Type I: grade 0 no change, 1+ < 25% hepatocytes affected, 2+ 25–50% hepatocytes affected, 3+ 50–75% hepatocytes affected, 4+ 75–90% hepatocytes affected; type II: grade 0 entirely absent, 1 < 10% periportal areas affected, 2 10–25% periportal areas affected, 3 25–75% periportal areas affected, 4 75–90% periportal areas affected)

β -Glucan (g/kg)	Mild changes (type I)					Severe changes (type II)				
	0	1+	2+	3+	4+	0	1	2	3	4
0	0	2	3	2	3	5	2	2	1	0
15	0	0	3	5	2	0	2	3	4	1
30	0	0	5	4	1	0	1	3	2	4
45	0	0	4	6	0	0	0	3	2	5

separate vacuoles of hepatocytes (Plates 1 and 2). The changes were already evident in the hypercholesterolaemic control group fed on cellulose-containing diet. The number of hepatocytes affected increased slightly but not significantly when oat-bran concentrate was included in the diet (Table 3).

More severe fatty changes were observed in the proximity of portal veins. Fat occurred more frequently in separate massive cavities (Plate 3). However, no cirrhotic, necrotic or inflammatory changes were observed. These changes were already present in the hypercholesterolaemic control group, but were accentuated with an increase in oat-bran concentrate in the feed.

Serum alanine aminotransferase activity varied from 42 to 68 units/l, showing no signs of liver cell damage in any of the experimental groups, and no significant difference between the experimental groups.

DISCUSSION

In our previous study (Mälkki *et al.* 1992) a 30% decline in serum total cholesterol concentration was observed in normocholesterolaemic young rats which were fed with a diet containing 33 g β -glucan/kg originating from an ethanol–water wet-milled oat-bran concentrate. Moreover, compared with cellulose-fed control animals, increased absolute and relative liver weights as well as accumulation of fat in the livers of oat-bran concentrate-fed animals were observed.

In the present study a similar oat-bran concentrate was fed to adult normocholesterolaemic rats in diets containing 15, 30 or 45 g β -glucan/kg. In contrast to the young rats used in the previous study, serum total and HDL-cholesterol concentrations were not affected in adult rats. Yet a decrease in the absolute and relative liver weights was observed indicating an interference with the liver metabolism. Lack of effect on serum cholesterol might be partly due to the low initial level of cholesterol in the rats with cholesterol and cholic acid-free diet. No lipid accumulation was observed in the livers of these animals.

The only experimental difference compared with the earlier studies in which a significant reduction was achieved with similar preparations (Ranhotra *et al.* 1990; Mälkki *et al.* 1992) was the age of the animals. In the studies of Mongeau *et al.* (1991) the hypocholesterolaemic effect of oat bran in the absence of added lipotropic substances depended on the age and sex, thus probably also on the sexual maturity of the male animals. There seems to be an inverse correlation between age and hypocholesterolaemic

response when no lipotropic substances are added in the feed. In the experiments of Ranhotra *et al.* (1990) the initial weight of Sprague-Dawley rats was 35(SD 3) g, and a concentration of 28.3 g soluble fibre/kg in the feed caused a reduction of 39% in total cholesterol after 4 weeks, with no significant change in the concentration of serum HDL-cholesterol. In our own previous experiments (Mälkki *et al.* 1992) with Sprague-Dawley rats having an initial weight of 70(SD 6) g a β -glucan concentration of 33 g/kg caused a decrease of 28% in serum total cholesterol after 4 weeks. In the study of Illman & Topping (1985) with Hooded Wistar rats having an initial weight of 200–220 g a content of 100 g dietary fibre/kg, corresponding to approximately 50 g β -glucan/kg, caused a decrease of 15% in plasma cholesterol within 10 d. In the present study the initial weight of Sprague-Dawley rats was 270(SD 15) g, and no cholesterol-lowering effect in normocholesterolaemic animals was observed.

The small but significant increase in liver weight in some groups receiving oat-bran preparations observed in our earlier study (Mälkki *et al.* 1992) was not observed in the present work. On the contrary, both absolute and relative liver weights were lower than in the control groups receiving cellulose in the diet. The main difference in the test conditions was the age of the animals, which might have caused some differences in the liver metabolism. For example, many liver enzyme activities are known to be strongly age-related in rats (Schmidt *et al.* 1983). As in the previous study and several other studies, the weight gain of the animals in the test groups receiving oat-bran preparations was higher than that in the control group receiving the cellulose-containing diet.

Shinnick *et al.* (1990) studied the cholesterol-fed rat as a model for evaluating the hypocholesterolaemic potential of foods. A diet containing 10 g cholesterol and 2 g cholic acid/kg effectively elevated the concentrations of cholesterol in the serum (by 107% compared with the control diet, in 20 d) and in the liver, and of triacylglycerols in the liver, in adult rats. It also resulted in a 45% increase in liver weight and severe infiltration of fat in the livers, the severity of the lesions increasing with an increase in cholic acid in the feed.

In the present study rats were made hypercholesterolaemic using a similar procedure. After treatment for 3 weeks, serum total cholesterol level was 150% higher and HDL-cholesterol level 55% lower than that in the animals fed on the control diet. Relative liver weight increased by 17% and lipid accumulated in the liver.

With hypercholesterolaemic feeds, fluctuations in the serum total cholesterol and triacylglycerol concentrations during the experiment were large, especially in the control group fed on cellulose-containing diet and in the group receiving the largest concentration of oat-bran concentrate. Since the animals were not adapted to the hypercholesterolaemic conditions before the test, the fluctuation evidently indicates an imbalance in cholesterol metabolism. A similar tendency is evident in the results of Ranhotra *et al.* (1990) in which the values for total cholesterol in both the control and the experimental groups were 18–28% higher after 2 weeks than after 4 weeks. In most of the previous studies only values for initial and final concentrations of cholesterol are given.

Oat-bran concentrate in the hypercholesterolaemic diet significantly attenuated the increase in serum total cholesterol and the decrease in HDL-cholesterol level. During treatment for 3 weeks, serum total cholesterol concentration decreased by about 45% and HDL-cholesterol concentration increased by about 40%, compared with the hypercholesterolaemic control diet. Similar normalization of the serum cholesterol profile of hypercholesterolaemic rats after ingestion of soluble oat-fibre preparations has been reported previously by Ney *et al.* (1988).

Threshold concentrations and dose responses for the hypocholesterolaemic effect of oat-bran preparations in rats were studied recently by Shinnick *et al.* (1988, 1990). The threshold appeared at 30 g oat fibre/kg, corresponding to 15 β -glucan in the feed, although

the effects were not significant at levels below 40 (Shinnick *et al.* 1988) or 100 (Shinnick *et al.* 1990) g oat fibre/kg. Similarly, Newman *et al.* (1992) observed a significant reduction in serum cholesterol with oat bran in amounts corresponding to 33.2 g β -glucan/kg in the feed, but not with an amount corresponding to 13.1 g β -glucan/kg. Liver cholesterol was reduced significantly in the studies of Shinnick *et al.* (1988, 1990) when the content of oat fibre was 4% or higher, whereas Newman *et al.* (1992) obtained a reduction with a diet containing 33.2 g dietary fibre from oat bran/kg but not with another containing 84.2 g/kg.

In the present study a significant reduction in total cholesterol and an increase in HDL-cholesterol, compared with the cellulose-fed control group, was obtained in hypercholesterolaemic rats with a dose corresponding to 15 g β -glucan/kg in the feed. This is lower than the concentrations reported by the authors cited previously. It confirms that the earlier observations (Ranhotra *et al.* 1990; Mälkki *et al.* 1992) on the superiority of the hypocholesterolaemic effect of oat-bran concentrate over untreated oat bran, tested with young rats and on a similar level of β -glucan either from oat bran or concentrate, are valid also for adult hypercholesterolaemic rats.

Oat-bran concentrate in the hypercholesterolaemic diet decreased the relative liver weight by about 10%, but accentuated the degree of liver fat infiltration in proportion to its concentration. Also in the study of Shinnick *et al.* (1990), oat fibre in the feed tended to decrease liver weight. All cholesterol and cholic acid-fed animals in their study exhibited moderate to severe fat infiltration. However, no consistent effect of oat fibre on liver fat infiltration was observed.

In the present study an increase in the liver fat accumulation was observed along with the increase in the concentration of fibre in the diet. This might be caused by an increase in fatty acid and cholesterol synthesis, both of which were shown by Illman & Topping (1985) to be enhanced in the liver when feeding soluble oat fibre, the former by 400%, the latter by 100%. The increase in cholesterol synthesis is to be expected from the increased steroid excretion caused by the oat fibre. The increase in fatty acid synthesis is evidently due to the increased flow of short-chain fatty acids in the liver. In fact, Illman & Topping (1985) found a positive correlation (r 0.74, P < 0.01) between plasma propionate concentrations and hepatic fatty acid synthesis. Thus, it is possible that a dose of oat fibre exceeding that causing the maximum cholesterol reduction will be reflected in increased accumulation of lipids in the liver. Since neither insoluble fibre (Lopez-Guisa *et al.* 1988) nor oat-bran concentrates in diets containing no added cholesterol or cholic acid caused any accumulation of lipids in liver (Shinnick *et al.* 1990, and the present study), and since the induced hypercholesterolaemia is an artificial state dissimilar to human metabolism, it is unlikely that oat-bran concentrates would cause a similar effect in human liver.

The basic difficulty in testing the effects of fibre preparations in animal experiments is the lack of animal species having a cholesterol metabolism similar to that of humans. Although the amounts of cholesterol and cholic acid needed to create a hypercholesterolaemic state are usually 10 and 2 g/kg respectively, the fat content of the diets is often only 50–100 g/kg (Lopez-Guisa *et al.* 1988; Shinnick *et al.* 1988, 1990; Ranhotra *et al.* 1990; Mälkki *et al.* 1992; Newman *et al.* 1992), which causes an abnormally high concentration of cholesterol and cholic acid in the fat phase of the feed. A possible way to eliminate these abnormalities is to use young rats which react to the soluble-fibre preparations without needing added lipotropic compounds in the diet (Ranhotra *et al.* 1990; Mälkki *et al.* 1992).

REFERENCES

- American Institute of Nutrition (1977). Report of the American Institute of Nutrition *ad hoc* committee on standards for nutritional studies. *Journal of Nutrition* **107**, 1340–1348.

- Autio, K., Mälkki, Y., Virtanen, T. (1992). Effects of processing on the microstructure of oat (*Avena sativa*) bran concentrate and the physicochemical properties of isolated β -glucans. *Food Structure* **11**, 47–54.
- Carrol, R. M. & Feldman, E. B. (1989). Lipids and lipoproteins. In *The Clinical Chemistry of Laboratory Animals*, pp. 95–116 [W. F. Loeb and F. W. Quimby, editors]. Oxford: Pergamon Press.
- The Committee on Enzymes, The Scandinavian Society for Clinical Chemistry and Clinical Physiology (1974). Recommended methods for the determination of four enzymes in blood. *Scandinavian Journal of Clinical Laboratory Investigations* **33**, 291–306.
- Craig, J. R. (1990). Liver. In *Anderson's Pathology*, 9th ed., pp. 1199–1320 [J. M. Kissane, editor]. St Louis, MO: The C. V. Mosby Co.
- Illman, R. J. & Topping, D. L. (1985). Effects of dietary oat bran on faecal steroid excretion, plasma volatile fatty acids and lipid synthesis in rats. *Nutrition Research* **5**, 839–846.
- Lopez-Guisa, J. M., Harned, M. C., Dubelzieg, R., Rao, S. C. & Marlett, J. A. (1988). Processed oat hulls as potential dietary fiber sources in rats. *Journal of Nutrition* **118**, 953–962.
- McCleary, B. & Glennie-Holmes, M. (1985). Enzymic quantification of (1 \rightarrow 3)(1 \rightarrow 4)- β -D-glucan in barley and malt. *Journal of the Institute of Brewing* **91**, 285–295.
- Mälkki, Y., Autio, K., Hänninen, O., Myllymäki, O., Pelkonen, K., Suortti, T. & Törrönen, R. (1992). Oat bran concentrates: physical properties of β -glucan and hypocholesterolemic effects in rats. *Cereal Chemistry* **69**, 647–653.
- Mongeau, R., Brassard, R., Malcom, S. & Shah, B. G. (1991). Effect of dietary cereal brans on body weight and blood lipids in a long-term rat experiment. *Cereal Chemistry* **68**, 448–453.
- National Research Council (1987). Nutrient requirements of laboratory animals. In *Nutrient Requirements of Domestic Animals*, p. 23. Washington, DC: National Academy of Sciences.
- Newman, R. K., Klopfenstein, C. F., Newman, C. W., Guritno, N. & Hofer, P. J. (1992). Comparison of the cholesterol-lowering properties of whole barley, oat bran, and wheat red dog in chicks and rats. *Cereal Chemistry* **69**, 240–244.
- Ney, D. M., Lasekan, J. B. & Shinnick, F. L. (1988). Soluble oat fiber tends to normalize lipoprotein composition in cholesterol-fed rats. *Journal of Nutrition* **118**, 1455–1462.
- Paton, D. (1991). Processes for the preparation of β -glucan enriched oat bran. In *Proceedings of the International Conference on Oat β -Glucans and Cardiovascular Disease*. Minneapolis, MN: American Oat Association.
- Ranhotra, G. S., Gelroth, J. A., Astroth, K. & Rao, C. S. (1990). Relative lipidemic responses in rats fed oat bran or oat bran concentrate. *Cereal Chemistry* **67**, 509–511.
- Schmidt, E., Schmidt, F. W., Both, R., Ohlendorf, S., Raupach, R. & Staar, U. (1983). Enzyme pattern in liver and serum of rats during growing and aging. In *Progress in Clinical Enzymology*, vol. 2, pp. 43–52 [D. Goldberg and M. Werner, editors]. New York: Masson.
- Shinnick, F. L., Ink, S. L. & Marlett, J. A. (1990). Dose response to a dietary oat bran fraction in cholesterol-fed rats. *Journal of Nutrition* **120**, 561–568.
- Shinnick, F. L., Longacre, M. J., Ink, S. L. & Marlett, J. A. (1988). Oat fiber: composition versus physiological function in rats. *Journal of Nutrition* **118**, 144–151.

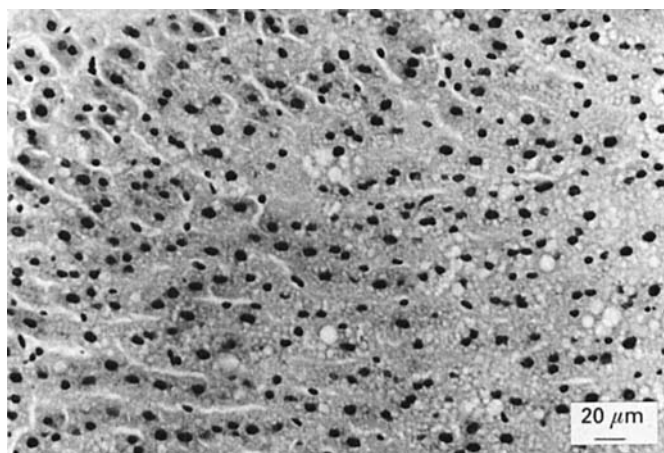


Plate 1. An extensive microvacuolar fatty degeneration (type I, grade 4+) in hypercholesterolaemic rats fed on diets containing oat-bran concentrate. Almost all the parenchymal cells contain multiple small vacuoles in their cytoplasm. None of the cells in this field are severely affected, however. Haematoxylin-eosin. For details of procedures and classification, see p. 769 and Table 3.

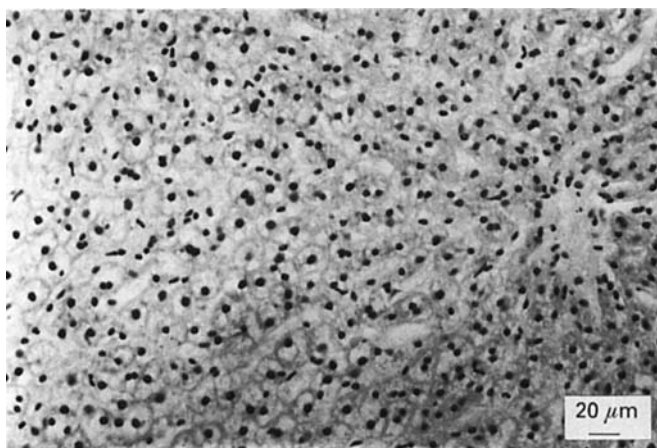


Plate 2. A moderate degree of microvacuolar fatty degeneration (type I, grade 3+) of hypercholesterolaemic rats fed on diets containing oat-bran concentrate. About 75% of the cells are characterized by extensive cytoplasmic vacuolization. Notice an area of less affected cells around the central vein on the right. Haematoxylin-eosin. For details of procedures and classification, see p. 769 and Table 3.

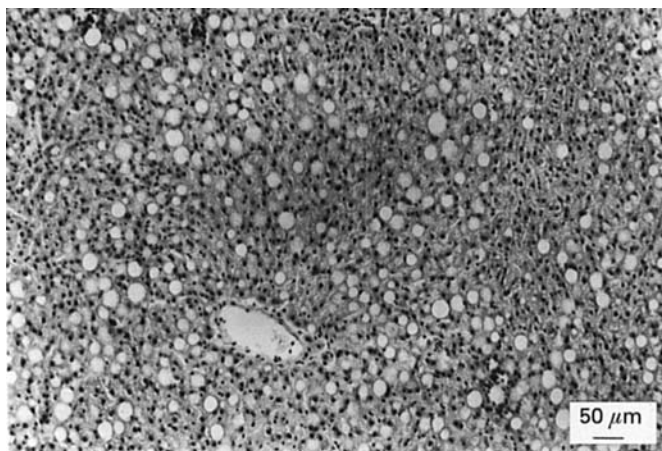


Plate 3. A low magnification view of a severe fatty degeneration (type II, grade 4) of hypercholesterolaemic rats fed on diets containing oat-bran concentrate. More than 75% of the parenchymal cells contain a single large cytoplasmic vacuole displacing the nucleus to the cell periphery. The remainder of the parenchymal cells are affected by a microvacuolar (mild) fatty degeneration. Haematoxylin-eosin. For details of procedures and classification, see p. 769 and Table 3.