

# A new mound-building biota from the lower Carboniferous of Alabama

David C. Kopaska-Merkel,<sup>1</sup>  Douglas W. Haywick,<sup>2</sup> and Richard G. Keyes<sup>3</sup>

<sup>1</sup>Geological Survey of Alabama, P.O. Box 869999, Tuscaloosa, Alabama 35486-6999, USA <[dkm@gsa.state.al.us](mailto:dkm@gsa.state.al.us)>

<sup>2</sup>University of South Alabama, LSCB 136, Mobile, Alabama 36688, USA <[dhaywick@southalabama.edu](mailto:dhaywick@southalabama.edu)>

<sup>3</sup>P.O. Box 21061, Huntsville, Alabama 35813, USA <[rgeo@bellsouth.net](mailto:rgeo@bellsouth.net)>

**Abstract.**—A small (1.2 m) columnar carbonate mound in shaley strata equivalent to the Hartselle Sandstone (lower Serpukhovian) near Woodville, northeastern Alabama, was built by a consortium of species unlike those of other Carboniferous mounds in the southeastern United States. The mound contains a new problematic microencruster, *Aphralysia anfracta* new species, along with encrusting bryozoans (*Fistulipora* M'Coy, 1849), nonskeletal microbes, and other microencrusters, including *Aphralysia capriorae* Mamet and Roux, 1975, in a carbonate mud matrix. Mound cavities are filled with three generations of carbonate and siliciclastic sediment. Other biotic constituents of the mound include oncooids, sponges (including *Pileospongia* Rigby, Keyes, and Horowitz, 1979), gastropods, crinoids, a tabulate coral, and coenobionts, including coccoid calcimicrobes. The mound biota, especially the microencrusters, is dramatically different from those of other Serpukhovian mounds that have been described from Alabama (made by various consortia of rugose corals, fenestrate bryozoans, crinoids, sponges, and nonskeletal microbes). Indeed, the Woodville mound extends the range of the lower Carboniferous encruster *Aphralysia* Garwood, 1914 to North America.

UUID: <http://zoobank.org/d3988875-a7fb-4382-bd14-b17c083d87ad>

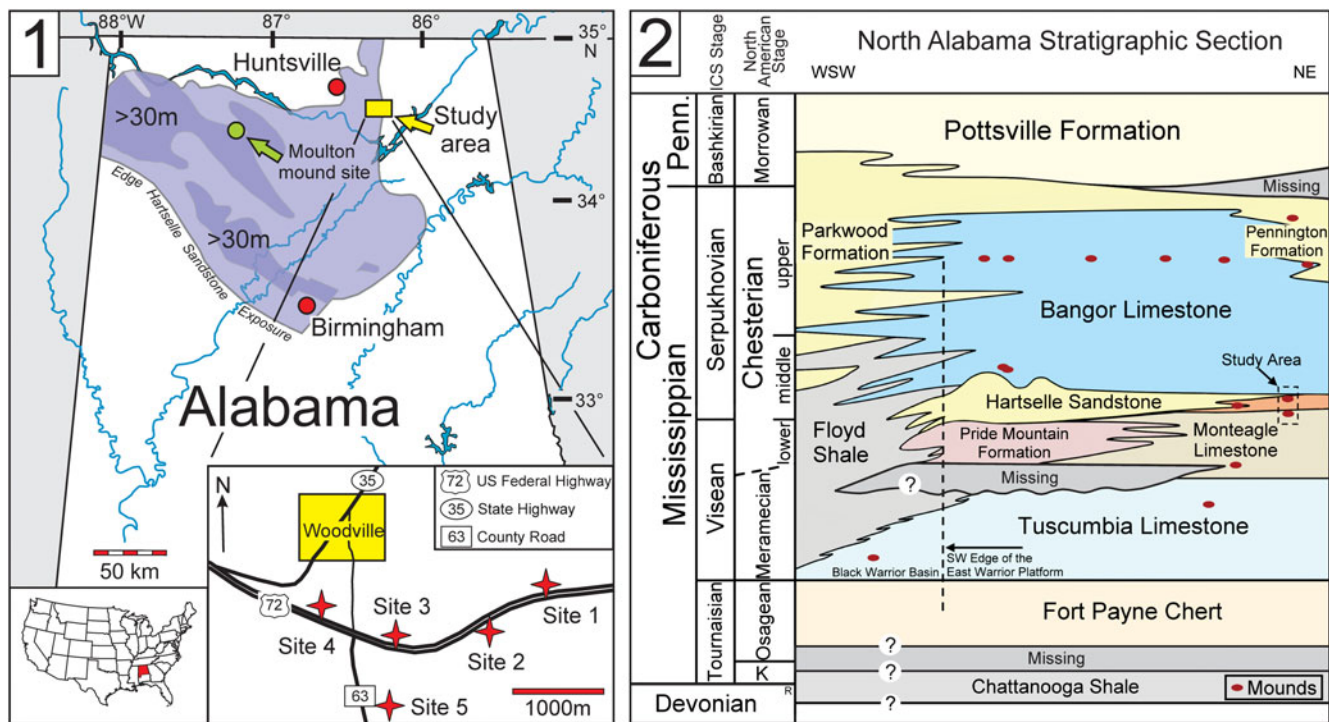
## Introduction

Upper Mississippian (Serpukhovian, Chesterian) sedimentary rocks are widespread in northern Alabama across both the Appalachian Plateau and the Valley and Ridge province of the Appalachian orogenic belt (Thomas, 1972). In the northeastern portion of the state, these strata are dominated by carbonate rocks (Monteagle and Bangor limestones) that were deposited on a shallow marine platform adjacent to the Black Warrior foreland basin (Thomas and Mack, 2013). In our study area, east of Huntsville, Alabama (Fig. 1.1), a thin interval of brown-gray to dark gray shale containing interbeds of quartzose limestone and calcareous quartzarenite (Raymond et al., 1988) separates the Monteagle and Bangor limestones (Figs. 1.2, 2). These rocks in northeastern Alabama are equivalent to the Hartselle Sandstone of northwestern Alabama and are difficult to distinguish lithologically from the Pride Mountain Formation. A diverse assortment of marine fossils is commonly observed in the thin limestones within the shaley unit. To the south and west of our study area, adjacent to the Black Warrior basin, the Hartselle Sandstone is a quartzarenite up to 50 m thick (Raymond et al., 1988) that was deposited as a series of northwesterly oriented, shallow-marine-to-brackish barrier-island complexes (Thomas and Mack, 2013; Kopaska-Merkel and Rindsberg, 2016; Fig. 1.1).

Serpukhovian (Chesterian) organosedimentary structures (mounds and reefs) were comparatively rare in shallow marine regions surrounding the Black Warrior basin (Thomas, 1972; Andronaco, 1986; Kopaska-Merkel and Haywick, 2014), although they were common elsewhere (e.g., Pray, 1961; Wilson, 1975; Lees and Miller, 1995). Previous work by

Kopaska-Merkel and Haywick (2001, 2014) identified only 13 small buildups in the Bangor Limestone of northern Alabama and southeastern Tennessee. The largest, a coral-bryozoan-pelmatozoan-microbial biohermal complex near Moulton, Alabama (Fig. 1.1), is ~1.5 m thick and several tens of meters across. Smaller bioherms in the Bangor Limestone were built by various combinations of rugose corals, fenestrate and other bryozoans, pelmatozoans, and nonskeletal microbes (Kopaska-Merkel and Haywick, 2014). Two other Mississippian mounds have been described from Alabama: (1) a bryozoan mud mound in the Pennington Formation (Gibson, 1986), and (2) a sponge-microbial mound in the Tuscumbia Limestone (Kopaska-Merkel et al., 2013). More recently, investigations of the Monteagle-Hartselle interval in northeastern Alabama yielded three small carbonate mounds (Haywick et al., 2016; Fig. 2) near Woodville. Two are in the Monteagle Limestone; the other nucleated on an ooid grainstone in the lower part of the Hartselle-equivalent shale unit. This mound was buried by fissile, calcareous, gray shale. The shale contains sparse fossils; thin, very fossiliferous, rudstone/grainstone lenses, where they occur, consist primarily of fragmented fenestrate bryozoan fronds and axes of *Archimedes* Owen, 1838, small crinoid ossicles, and brachiopods (Table 1). The coarser rock types (calcareous sandstone and sandy limestone noted by Raymond et al., 1988) are generally well sorted, contain abundant coarse to very coarse (1–2 mm) skeletal detritus (in addition to the aforementioned, mollusks, sponges, and chondrichthyan teeth), subround-to-round dolomite clasts (1–6 mm), and fine to medium (0.25–0.5 mm), well-rounded quartz sand (Haywick et al., 2016).

All three mounds were recognized in the field by their characteristic domical shape. The Monteagle mounds are both ~0.7



**Figure 1.** (1) Location of the study area in relation to surface exposure of Hartselle Sandstone in northern Alabama. Area of thickest outcrop is shown by the > 30 m isopach (modified from Kopaska-Merkel and Rindsberg, 2016). Sites 1–4 refer to sections reported by Haywick et al. (2016). Site 5 is a sponge-rich locality reported by Rigby and Keyes (1998). The Woodville mound is located at site 1. The location of the Moulton mound within the Bangor Limestone (Kopaska-Merkel and Haywick, 2001) is also indicated on the main map. (2) Mississippian stratigraphic relationships in northern Alabama. Locations of known mounds indicated by dots. The Monteagle-Hartselle-equivalent interval targeted by this study is indicated by the small dotted box (modified from Keyes, 2018).

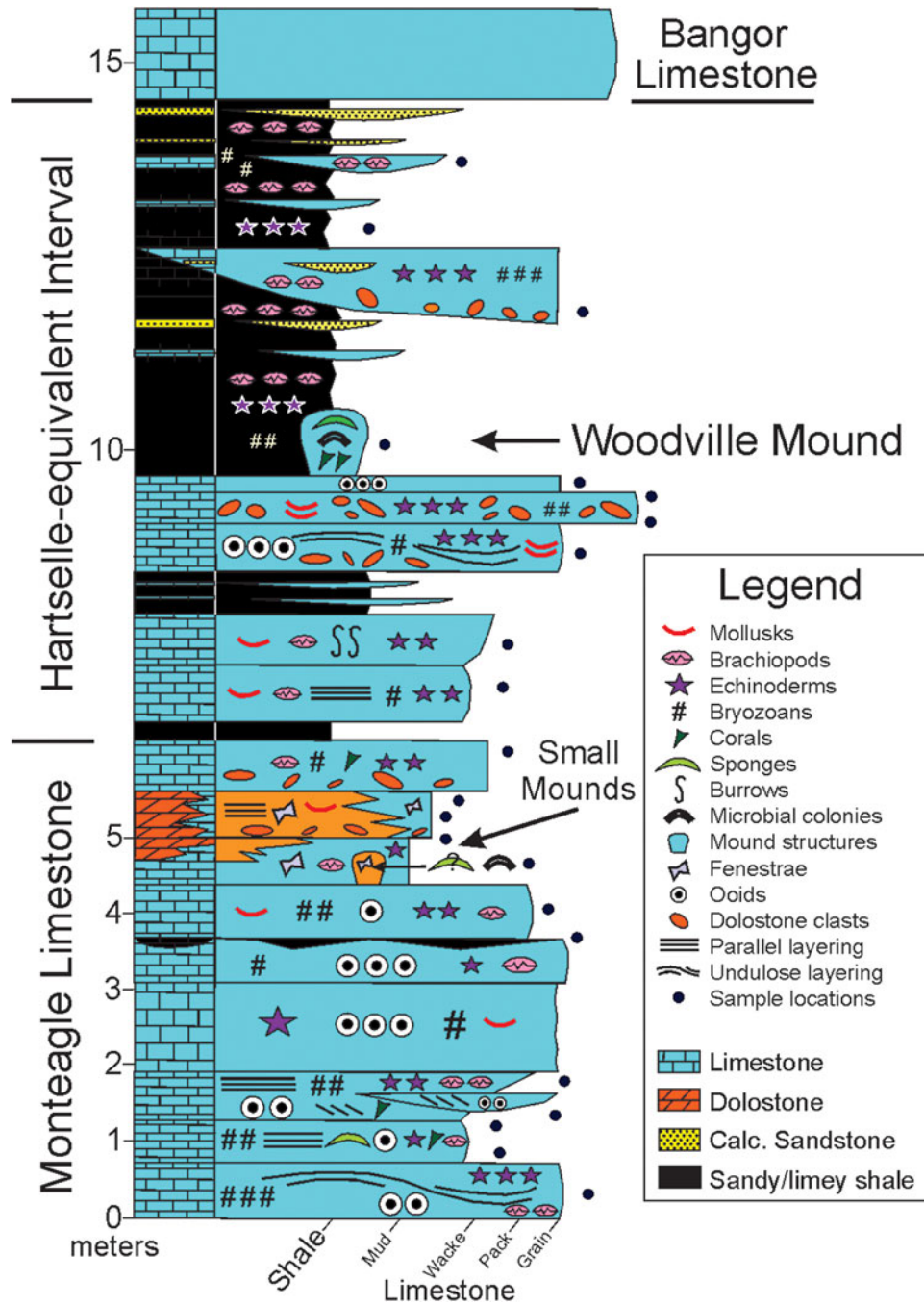
m tall and 0.5 m wide at the base. The Hartselle-equivalent mound (Woodville mound) is slightly larger, ~ 1 m wide and 1.2 m tall (Figs. 2, 3). Three nearby outcrops of the same interval were carefully examined, and no additional mound-like structures were discovered (Haywick et al., 2016). The Monteagle mounds are composed of very finely crystalline dolomite, and no conclusive biogenic microstructures have been observed in outcrop. The Woodville mound is a construct of macroscopic skeletal elements dominated by the bryozoan *Fistulipora* M'Coy, 1849 and fine carbonate sediment, bound together by a consortium of microscopic binding organisms. The mound is primarily medium gray in color but contains numerous limonite-stained mottles up to several centimeters wide. These are cavities that were filled with a poorly sorted mixture of siliclastic and carbonate sediment and calcite cement. All three of the mounds at the study site are small, rather inconspicuous in outcrop, and might easily have been overlooked when their constituent organisms were alive. We nevertheless consider them mounds because they were constructed the same way as those organosedimentary structures, through a combination of biogenic and depositional processes. Although small, they can be quite revealing about paleoenvironmental conditions and contain fossil species that are either rare in associated rocks or overlooked in larger structures.

The purpose of this paper is two-fold: (1) to document the Woodville mound biota, which is unique in Alabama, and (2) to describe a previously unknown mound-binding organism that, along with syndepositional induration, was instrumental in stabilizing skeletal debris and building this mound.

## Geologic setting

A diverse middle Chesterian (lower Serpukhonian; Fig. 1.2) marine fauna is found in Hartselle-equivalent strata at site 1 (Fig. 1.1; Supplementary Data 1) and in much of northeastern Alabama. Crinoid plates and stem segments, *Archimedes* axes, fragmented fenestrate bryozoan fronds, and brachiopods are the most common fossils. Cephalopods, solitary rugose corals, nonfenestrate bryozoans, chondrichthian teeth, and sponges also are observed.

**Stratigraphic setting.**—The stratigraphic section of interest here is upper Visean and lower Serpukhonian. In northeastern Alabama, the lower middle Chesterian consists of the upper 3–5 m of the Monteagle Limestone and overlying Hartselle-equivalent strata (Keyes, 2014). A distinct change in the echinoderm fauna took place at the base of the middle Chesterian. *Archimedes* axes and wing plates of *Pterotocrinus* Lyon and Casseday, 1859 became very common and typically are found with cup plates of *Agassizocrinus* Owen and Shumard, 1852. Their remains commonly occur together in fossiliferous lenses within the shaley section. It is not unusual to see hundreds of specimens of these taxa, especially *Archimedes* axes, scattered about a middle Chesterian outcrop (Keyes, 2014). *Archimedes* axes are found throughout the Mississippian of the eastern midcontinental region, but they are most abundant in the middle Chesterian. *Pterotocrinus* is a unique camerate crinoid in the eastern midcontinent. Its wing plates evolved rapidly during the Chesterian, and many wing-plate species are useful



**Figure 2.** Schematic sedimentary section summarizing the stratigraphy and lithology of site 1 of Haywick et al. (2016). The positions of small mounds and sampling locations are indicated.

in biostratigraphy (Butts, 1917, 1922; Ulrich, 1917; Weller, 1920; Sutton, 1934; Etnensohn et al., 2007).

Fossiliferous rudstone/grainstone lenses that interfinger with shale in the Hartselle-equivalent section at site 1 contain abundant *Agassizocrinus* cup plates, wing plates of two species of *Pterotocrinus* (*Pterotocrinus depressus* Lyon and Casseday, 1860 and *Pterotocrinus* cf. *P. armatus* Sutton, 1934), and *Archimedes* axes. Fossiliferous lenses containing an identical fauna are found near the top of the Hartselle-equivalent interval at site 5 (Rigby and Keyes, 1998). The presence in lenses at site 1 of *Pterotocrinus depressus* wing plates, *Pentremites*

*tulipaeformis* Hambach, 1903, and *Pentremites* cf. *P. sulcatus* Roemer, 1851 indicates an affinity with the upper middle Chesterian. These echinoderms are common throughout the lower Bangor Limestone in northern Alabama, Tennessee, and Kentucky, as well as the Glen Dean Limestone of Indiana, Kentucky, and Illinois (Butts, 1917, 1922; Weller, 1920; Horowitz, 1965). In contrast, specimens of *Pterotocrinus* cf. *P. armatus* and *Pentremites cervinus* Hall, 1858 in the fossiliferous lenses at the localities described by Haywick et al. (2016) indicate an affinity to the lower middle Chesterian (Sutton, 1934; Galloway and Kaska, 1957; Etnensohn et al., 2007).

**Table 1.** Macrofossils from the Hartselle-equivalent strata, site 1 and nearby sites. Macrofossil list from unpublished site records and data, site 40 (our site 1), R. Keyes, 2019.

---

Brachiopoda  
*Anthracospirifer increbescens* (Hall, 1883)  
*Cleiothyridina sublamellosa* (Hall, 1858)  
*Composita subquadrata* (Hall, 1858)  
*Diaphragmus cestriensis* (Worthen, 1860)  
*Echinoconchus alternatus* (Norwood and Pratten, 1855b)  
*Eumetria vera* Hall, 1858  
*Girtyella* sp.  
*Inflatia inflata* (McChesney, 1859)  
*Orthotetes kaskaskiensis* (McChesney, 1860)  
*Ovatia elongata* Muir-Wood and Cooper, 1960  
*Punctospirifer kentuckiensis* (Shumard, 1855)  
*Reticulariina spinosa* (Norwood and Pratten, 1855a)  
*Schellwienella* sp.  
*Stenosisma explanata* (McChesney, 1860)  
*Torynifer setigera* (Hall, 1858)  
*Lingula* sp.  
 Orbiculoidea sp.  
*Petrocrania chesterensis* Miller and Gurley, 1897  
 additional unidentified genera

Bryozoa  
*Archimedes* spp.  
*Fenestella* spp.  
*Fistulipora* sp.  
*Lyroporella* sp.  
*Polypora* cf. *P. corticosa* Ulrich, 1890  
*Tabulipora* sp.  
 additional unidentified genera

Echinodermata  
*Agassizocrinus occidentalis* (Owen and Shumard, 1852)  
*Eupachyrcrinus himmani* Burdick and Strimple, 1971  
*Pterotocrinus* cf. *P. armatus* variant Sutton, 1934  
*Pterotocrinus depressus* Lyon and Casseday, 1860  
*Zeacrinites wortheni* Troost in Hall, 1858  
*Pentremites cervinus* Hall, 1858  
*Pentremites tulipaeformis* Hambach, 1903  
*Pentremites sulcatus* Roemer, 1851  
*Archaecidaris* sp.

Chordata  
*Acondylacanthus* sp.  
*Chomatodus inconstans* Saint John and Worthen, 1875  
*Cladodus* sp.  
*Cochilodus* sp.  
*Cteacanthus* sp.  
*Deltodus* sp.  
*Helodus crenulatis* Newberry and Worthen, 1866  
*Helodus* sp.  
*Janassa* sp.  
*Petalodus acuminatus* (Agassiz, 1843)  
*Petrodus* sp.  
 additional unidentified genera

Cnidaria  
*Michelinia* sp.  
*Palastraea cullmanense* Rodríguez and Kopaska-Merkel, 2014  
*Zaphrentites spinulosum* (Milne-Edwards and Haime, 1851)  
*Sphenothallus* sp.

Mollusca: Bivalvia  
*Aviculopecten* sp.  
*Myalina concentrica* Meek and Worthen, 1860  
*Myalinella* sp.  
*Phestia* sp.  
*Schizodus depressus* Worthen, 1884  
*Septimyalina* sp.  
 additional unidentified genera

Mollusca: Gastropoda  
*Bellerophon chesterensis* Weller, 1920  
*Euomphalus planidorsatus* (Meek and Worthen, 1861)  
*Glabrocingulum* sp.  
*Orthonychia chesterense* (Meek and Worthen, 1866)

Mollusca: Cephalopoda  
*Pseudorthoceras* sp.  
*Rayonnoceras* sp.  
*Stroboceras gordoni* Niko and Mapes, 2005  
 ‘*Monteceras hartsellensis*’ Keyes, 2015 (nomen nudum)  
 large nautiloid shell fragments

Mollusca: Other  
*Cornulites* sp.  
*Palaeoconchus* cf. *P. imbricate* (Hall, 1859) (*Spirorbis*)

---

*Palaeoconchus* sp. (*Spirorbis*)  
 Porifera  
*Wewokella costata* Rigby and Keyes, 1998  
 Arthropoda  
*Kaskia chesterensis* Weller, 1936  
 Echinodermata (present in the same stratigraphic interval at nearby sites)  
*Cymbiocrinus dactylus* (Hall, 1859)  
*Harmostocrinus* sp.  
*Onychoocrinus pulaskiensis* Miller and Gurley, 1895  
*Phacelocrinus longidactylus* (McChesney, 1860)  
*Phanocrinus formosus* (Worthen in Meek and Worthen, 1873)  
*Pterotocrinus capitalis* (Lyon, 1857)  
*Pterotocrinus lingulaformis* Sutton, 1934  
*Pterotocrinus armatus* Sutton, 1934

---

In the Woodville area, the oldest middle Chesterian fossils are observed at site 3, four meters below the Monteagle-Hartselle contact. Here, *Pterotocrinus lingulaformis* Sutton, 1934, *Pterotocrinus armatus* wing plates, and *Pentremites cervinus* commonly occur with *Archimedes* axes. Great numbers of *Pterotocrinus capitalis* (Lyon, 1857) have been observed at the top of the Monteagle Limestone at sites 3 and 5. This species is considered an index fossil of the lower middle Chesterian in southern Illinois and northwestern Kentucky (Butts, 1917; Ulrich, 1917; Weller, 1920, 1926). Collectively, these echinoderm biostratigraphic data (Fig. 4) confirm that the Hartselle-equivalent unit in the study area is lower middle Chesterian, and that the microbial mound grew during the upper part of this interval.

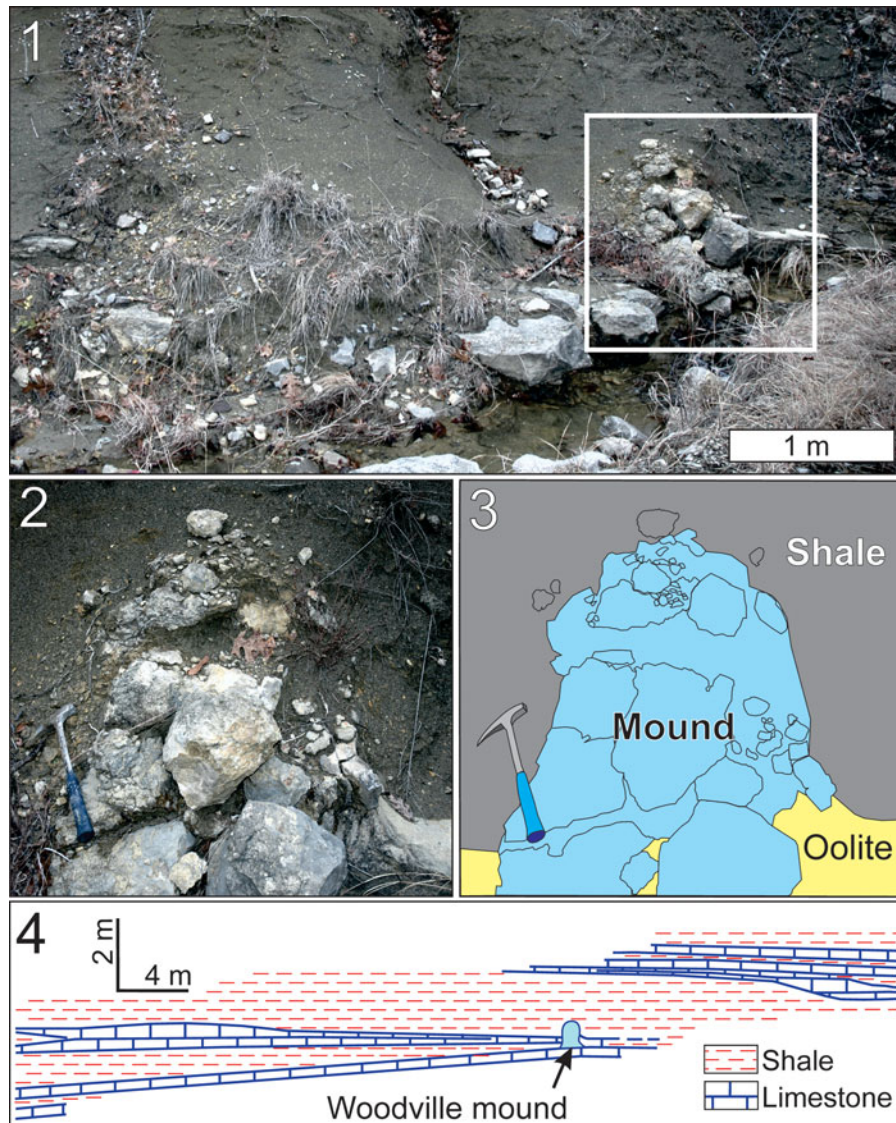
**Locality information.**—Our field site (site 1 of Haywick et al., 2016; Fig. 1.1) is located along U.S. Route 72, just south of Woodville, Alabama, in Thomas Cove, southeastern Jackson County, ~35 km east of Huntsville, Alabama (Supplementary Data 1). The Woodville mound is exposed at road level near the top of the section.

In our study area, four roadcuts and one natural outcrop (Supplementary Data 1) expose part of the Monteagle Limestone (upper Viséan) and the overlying lower Serpukhovian uppermost Monteagle Limestone and Hartselle-equivalent strata. Many outcrops are capped by the Serpukhovian Bangor Limestone, which overlies the Hartselle-equivalent beds. Hartselle-equivalent strata in northern Alabama are primarily composed of shale, with thin fossiliferous limestone to shale lenses and a few thin, quartzose, sand-rich lenses. To the west, the resistant Hartselle Sandstone forms a natural bench, which in some cases can be walked for kilometers (Thomas, 1972; Rindsberg, 1994).

## Woodville mound construction

Petrographically, we recognize four structural elements that make up the Woodville mound: (1) relatively large (to 1 cm) skeletal fragments, (2) finely crystalline precipitates made by binding and encrusting organisms, (3) sediment-filled voids, and (4) calcite spar cements precipitated into intraskeletal pores, fenestrae, shelter voids, and fractures. The only remaining porosity in any of the thin sections that we examined was confined to minor fractures and pressure-solution seams.

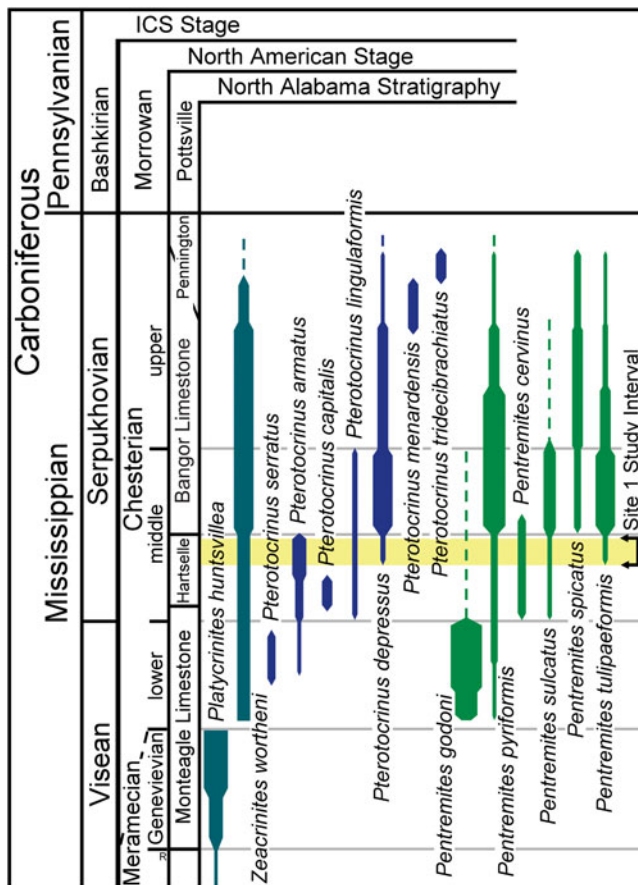
Petrographic evidence indicates that the Woodville mound grew atop an oolitic grainstone that was cemented onto the seafloor by a marine phase of isopachous radiaxial calcite spar (Haywick et al., 2016; Fig. 5.1). Some of this marine cement



**Figure 3.** The Woodville mound: (1) the mound in relation to surrounding sandy shale within Hartselle-equivalent strata; (2) close-up of the mound, area indicated by square in Figure 3.1; (3) interpretative sketch of Figure 3.2 indicating lithofacies types; (4) the mound in stratigraphic context (from Keyes, unpublished data).

also filled fractures near the periphery of the mound in contact with the oolite, suggesting that induration of the mound also began on the seafloor. The voids that constitute some of the mound's structure and their history of sediment fill provide additional insight into its constructional history. Voids are variable in both size and shape but can generally be grouped into three distinct generations based upon timing. The earliest generation includes intraskeletal voids, fenestrae, primary intergranular pore space, and shelter porosity. These voids are partially to completely filled with dark, nonferroan microcrystalline carbonate ( $< 10 \mu\text{m}$ ) that, in places, displays geopetal textures suggesting gravitational settling (Fig. 5.2). Sediment fill is likely the same material that makes up the mud matrix of the mound. Borings, which cut through the first generation of voids as well as some skeletal and microbial elements, are filled by a second generation of less turbid, slightly coarser microcrystalline calcite (Fig. 5.2, 5.3). The remaining porosity in both of these kinds of voids is filled by meteoric calcite spar cement.

The latest (third generation) voids are the largest and most dominant in the mound. They are irregularly shaped and can measure up to a few cm across. Some are partially filled by the microcrystalline calcite contained within the second generation voids (e.g., Fig. 5.3), but most are packed with a sediment composed of finely crystalline, limonite-stained 'pseudospars' calcite ( $10\text{--}20 \mu\text{m}$  crystals; 90%), quartz silt ( $20\text{--}50 \mu\text{m}$ ; 2–5%), and what had originally been euhedral dolomite rhombs ( $20\text{--}30 \mu\text{m}$ ; to 5%). Most dolomite rhombs were calcitized (dedolomitized) during postdepositional meteoric alteration. Because of the limonite content of the sediment fill, the distribution of third-generation voids in the mound is best observed in polished slabs under reflected light. Most of the voids are randomly oriented vugs and fractures that cut through mound constituents (Fig. 5.4), however, some are sandwiched between skeletal fragments, which in places imparts a parallel disposition to mound components (Fig. 5.5). Under transmitted light, some of the sediment in these voids can be seen draping over



**Figure 4.** Lower Carboniferous echinoderm biostratigraphy of northern Alabama. The age of the Woodville mound located at site 1 in Figure 1.1 is indicated. Species authorship (for taxa not in text): *Pentremites godoni* (Defrance, 1819); *Pentremites pyriformis* Say, 1825; *Pentremites spicatus* Ulrich, 1917; *Platycrinites huntsvillae* Troost, 1850; *Pterotocrinus menardensis* Weller, 1920; *Pterotocrinus serratus* Weller, 1920; *Pterotocrinus tridecibranchiatus* Gutschick, 1965.

microbial colonies (Fig. 5.6). That they were buried rather than truncated suggests that the colonies might have been actively growing into some third-generation void spaces before sediment infiltration. The same limonite-stained sediment also fills the intergranular void space within portions of the oolite below the mound and clearly postdates the marine isopachous cement (Fig. 5.1).

### Mound composition

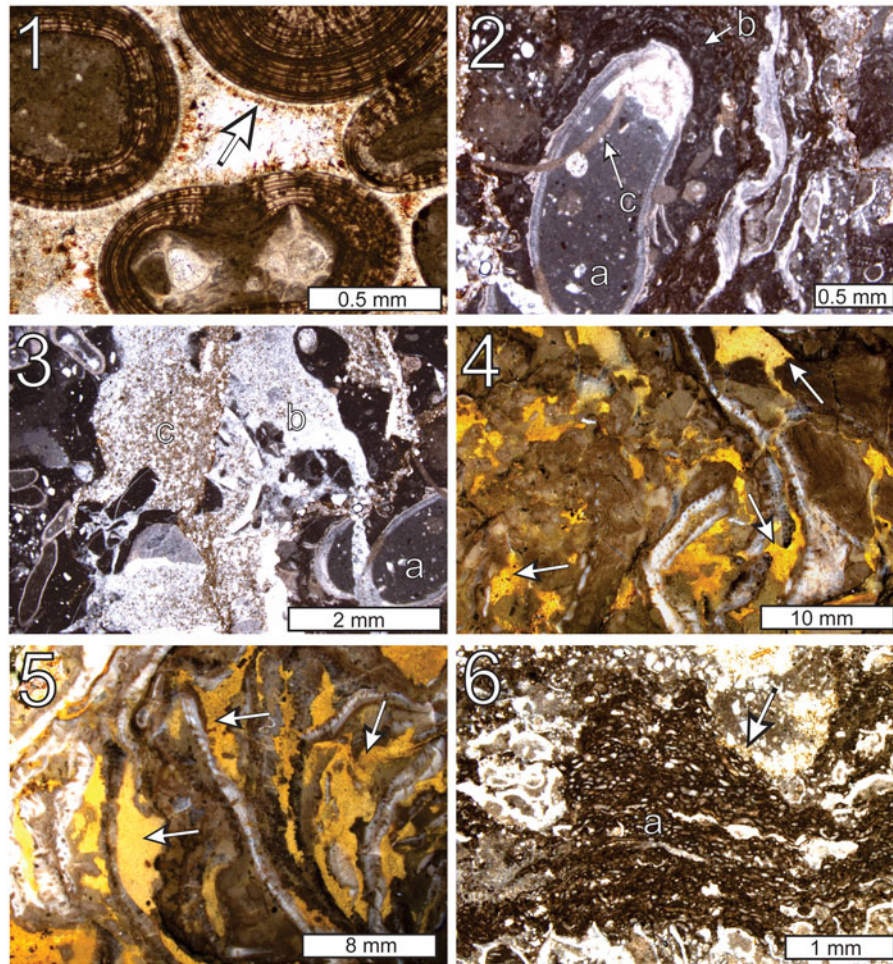
**Skeletal elements.**—Skeletal organisms constitute < 30% of the Woodville mound and primarily consist of *Fistulipora* colonies (Fig. 5.4) with minor amounts of gastropods, brachiopods, crinoid ossicles, encrusting tabulate corals, and small sponges, including *Pileospongia* (Fig. 6). The iconic Serpukhovian (Chesterian) fenestrate bryozoan *Archimedes*, which is abundant in the Hartselle-equivalent shale that encompasses the mound, has not been identified in the mound itself. Indeed, few fenestrate bryozoans were found in the mound proper; however, fenestrate fragments in the oolite below the mound commonly acted as nuclei for ooid growth (Fig. 5.1). Skeletal elements are sporadically distributed within the mound and appear in places to be subparallel to one another

(Figs. 5.5, 7.1). Other than their local subparallel disposition, skeletal elements exhibit no consistent orientation. Although ooid grainstone is in direct contact with the lower part of the mound, only a few ooids were found embedded within the mound.

**Cryptic organisms.**—Potential evidence of cryptic organisms in the mound includes the remains of coccooid microbes, pendant microcrystalline calcite in voids, and small sponges. These cover a wide range of sizes. In one example, coccooid microbes and pendant microcrystalline calcite occur together in a complex former void (Figs. 6.2, 7.2). Micropelletal microcrystalline cement appears to have been the first material precipitated into this void. Most of the remaining space was filled with drusy calcite spar (discussed further under void-filling cement). Conical projections from the top of the void are pendant microcrystalline carbonate that formed before precipitation of the drusy spar, probably under the influence of nonskeletal microbes. A cluster of loosely packed spheroids to the left of and below the void probably records the growth of coccooid microbes. This might have been part of the original void. If so, the colony grew before precipitation of micropelletal calcite. The coccooid bodies are composed of microcrystalline calcium carbonate and are clustered but not addressed. Some are structureless; others contain slit-like voids that are filled with calcite cement (Fig. 7.2). The coccooid bodies form a mass ~ 1 mm across. Individual spheroids range ~ 30–60 μm in diameter. Further, beneath the colony and the void next to it is a packstone consisting of angular particles 150–300 μm across (fine to medium sand size), embedded in dark gray microcrystalline carbonate, which might be microbial. This area also might have originally been part of the void. Other possible examples of cryptic organisms include small sponges entombed within the mound (e.g., Fig. 6). Pore-lining and geopetal deposits, some composed of micropelletal calcite, are found in small fenestrae, bryozoan chambers, and other void spaces (Fig. 7.3, 7.4). That some pore-lining occurs along the tops of voids defying gravity suggests microbial influence. Nearby cavities contain both upright and pendant microcrystalline encrustations (Fig. 7.4).

**Binding material.**—The majority of the skeletal elements, predominantly bryozoans, are discontinuously coated and bound together by two components. These are (1) microcrystalline calcium carbonate, and (2) tubules of a variety of sizes, tightness and regularity of curvature, and wall structure, all filled with calcite cement. These encrusting materials bound together not only the large bryozoans, but also coarse detritus, including gastropod shells and other fossil fragments (Fig. 7.5). Sponges (Fig. 6) helped to bind materials in the mound.

The microcrystalline calcium carbonate ranges from structureless to clotted to crudely laminated. It directly coats bryozoans and other large particles. It also coats tubular encrusting microfossils (*Aphralysia anfracta* new species and *Aphralysia capriorae* Mamet and Roux, 1975), and forms projections that appear to have extended into the water and away from the main mass of boundstone (Fig. 7.4). In a few cases, microcrystalline calcium carbonate and tubular microfossils are interlaminated, forming domal structures (Fig. 7.6).



**Figure 5.** Thin-section photomicrographs and photographs of polished slabs of cements and void-filling sediment in the Woodville mound: (1) isopachous marine cement overlain by limonite stain (arrow) within ooid grainstone (thin section GSA-I33004); (2) first-generation microcrystalline geopetal fill (a) within a brachiopod; the brachiopod is coated in microencrusters (b) and both are cut by borings containing second-generation carbonate sediment (c) (thin section GSA-I33008); (3) first (a), second (b), and third (c) generation sediment fill in voids within the Woodville mound (thin section GSA-I33008); (4) third-generation sediment fill (arrows) in irregular void spaces within a polished slab of the Woodville mound; the limonite content of the sediment makes the voids very apparent in reflected light (sample GSA-M256); (5) third-generation sediment-filled voids (arrows) sandwiched between *Fistulipora* bryozoans (polished slab, reflected light, sample GSA-M256); (6) third-generation sediment fill (arrow) draping over microencrusters (a) (thin section GSA-M257).

Where encrusters are present, microcrystalline calcium carbonate coats them unevenly, fills the spaces among them, and in some cases completely engulfs them. Tubules either form compact masses or encrust other objects. There are at least three kinds of tubules composing the mound (and a fourth found reworked into ooid grainstone directly beneath the mound). These are described in later sections.

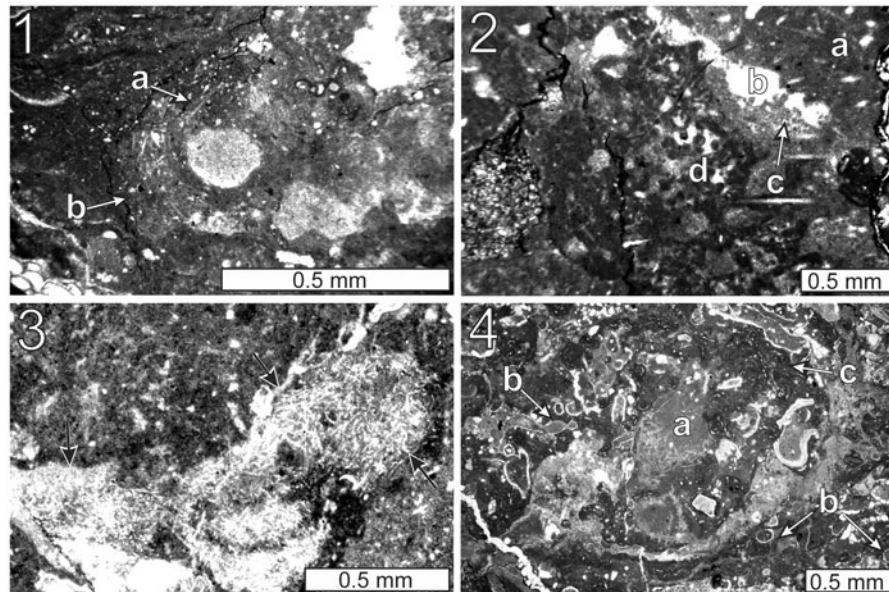
Small oncoids a few millimeters across (discussed further in a later section) are embedded in the mound, cemented in place by microcrystalline calcium carbonate and by *Aphralysia anfracta* n. sp. Because of their subspherical shape, we infer that the oncoids initially formed as free-rolling objects. The oncoids primarily consist, in order of decreasing abundance, of: (1) clotted microcrystalline calcium carbonate, (2) tubular microfossils referred to *Aphralysia anfracta* n. sp., (3) clusters of vesicles filled with white calcite cement, referred to *Aphralysia capriorae*, and (4) larger thin-walled calcite tubes that encrusted (and perhaps bored into) the oncoids, referred to Problematicum A. A small amount of boundstone debris (tuberoids;

sponge or boundstone intraclasts) containing *Aphralysia anfracta* n. sp. and other mound components has been found in sandy silty calcareous mudstone above the mound.

An ooid in ooid grainstone directly beneath the mound contains adpressed calcite-walled vesicles, referred to Problematicum B. It is not known if Problematicum B served as a binder elsewhere.

### Void-filling cement

Cement fills structural voids within fossils such as bryozoans and gastropods, fenestrae, shelter voids, and fractures that cross-cut other structural components (e.g., Fig. 7.3, 7.5). The same syndimentary isopachous radial calcite spar that cemented the oolite on which the mound nucleated also lines some of the void spaces within the mound. In places, this phase of cement postdates the first generation of void-filling sediment, but in others, it predates the sediment, indicating that the two processes were simultaneous (i.e., before boring). Volumetrically,



**Figure 6.** Thin-section photomicrographs of sponges from the Woodville mound: (1) cross section of whole sponge with monaxon spicules (a); the left margin of the sponge is indicated by the arrow labeled b (thin section GSA-M258); (2) cluster of monaxon sponge spicules (a) overlying shelter void (b) containing micropelletal cement (c); a cluster of coccoid microfossils (d) is visible in the center of the photograph (thin section GSA-M259); (3) *Pileospongia* Rigby, Keys, and Horowitz, 1979 (arrows) (thin section GSA-M260); (4) vase-shaped sponge (a) that was enveloped by a consortium of encrusters dominated by *Aphralysia anfracta* n. sp. and nonskeletal microbes; monaxon spicules are piled up in the bottom of the cavity once occupied by the sponge; thin-walled tubes of Problematicum A (b) are common in this view as are numerous examples of *Aphralysia anfracta* n. sp. (c) (thin section GSA-M261).

however, most spar cement within voids is drusy calcite (Fig. 7.4). This phase of cementation occurred during dissolution of aragonitic shells (e.g., gastropods) and was precompactional and nonferroan, suggesting precipitation during early meteoric (phreatic) diagenesis (James and Choquette, 1984). Many of the larger voids within the Woodville mound that contain mixed siliciclastic and carbonate sediment are stained with limonite (Fig. 5.3–5.6). Limonite also coats the radiaxial calcite spar in the oolite (Fig. 5.1), indicating that it too is a product of early meteoric diagenesis.

## Materials and methods

Approximately 15% by volume of the mound was collected from the site, from which 57 thin sections were manufactured by us. Forty-eight of the thin sections were standard sized (2.7 cm by 4.6 cm). Nine were large format (7.6 cm by 5.0 cm). Eight of the standard-sized thin sections were polished to thicknesses < 30  $\mu\text{m}$ . Two polished slabs (~ 15 cm by 8 cm) were also produced to examine macroscopic structures in the mound. Thin sections were used to examine microbial structures and their relationships to other mound components. Specimens of *Aphralysia anfracta* n. sp. were point counted using a grid digitally laid over digital thin-section photomicrographs, using Adobe Illustrator™ (Supplementary Data 2). Microfossils and other rock components were measured on digital photographs using calibrated scales in Adobe Illustrator™.

*Repository and institutional abbreviation.*—Bulk samples containing fossil specimens collected from the Woodville mound site during this study, as well as all slabs and thin sections produced during this analysis, are housed in the

Geological Survey of Alabama Paleontology Collection (GSA) in Tuscaloosa, Alabama (Supplementary Data 3). All type material consists of petrographic thin sections.

## Systematic paleontology

### Problematica

Family Aphralysiaceae Vachard et al., 2001

Genus *Aphralysia* Garwood, 1914

*Type species.*—*Aphralysia carbonaria* Garwood, 1914, p. 269, pl. 21, figs. 3, 4. Lower Carboniferous, Ravenstonedale, Westmoreland, England, by original designation.

### *Aphralysia anfracta* new species

Figures 6.4, 7.3–7.6, 8–10, 13.3–13.6, 14.3, 14.4

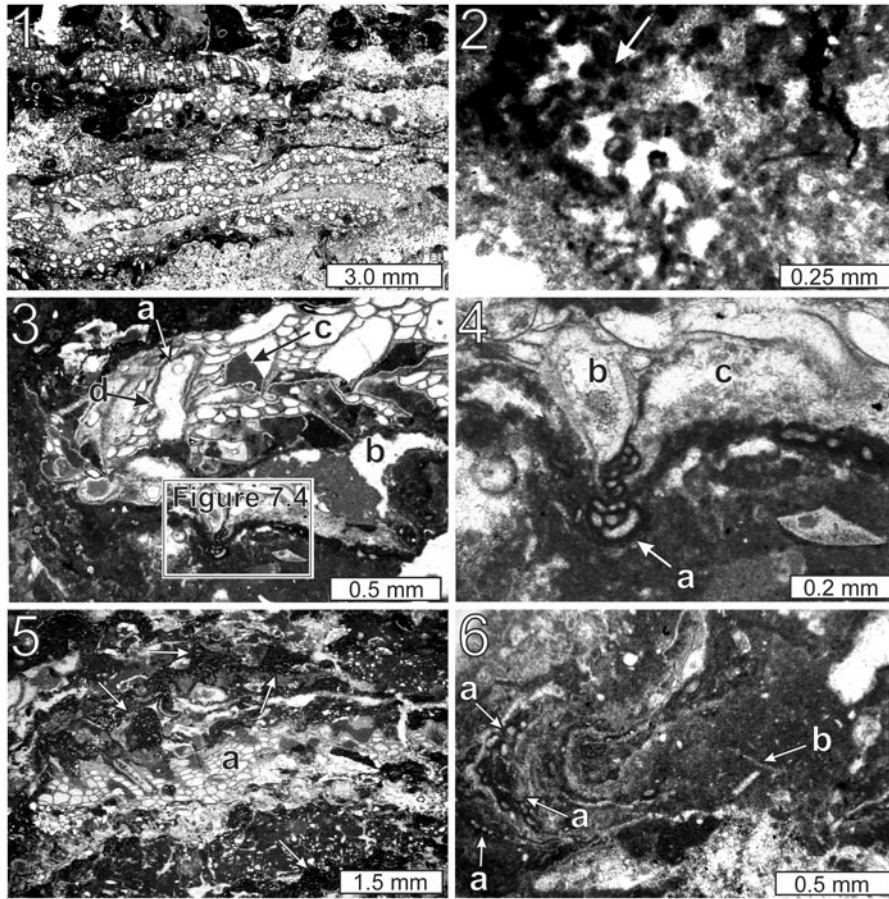
2003 *Aphralysia* sp.; Aretz and Herbig, pl. 37, figs. 5, 6, pl. 39, fig. 6.

2008 *Aphralysia* sp.; Aretz and Herbig, fig. 10F.

*Type specimens.*—Holotype, GSA-M259 (Fig. 8.3). Topotypes, GSA-I33003–I33005, I33007, GSA-M256–M258, and M260–M263.

*Diagnosis.*—Tubules; nonseptate; walls composed of dark-colored microcrystalline or microsparitic calcite (probably original mineralogy and texture) to 10  $\mu\text{m}$  thick; length considerably greater than diameter; tubules intersecting planar surfaces in continuous sections as long as 0.4 mm; nearly straight to tightly curved and recurved; wall thickness and tubule diameter correlated; tubules rarely, if ever, branching.





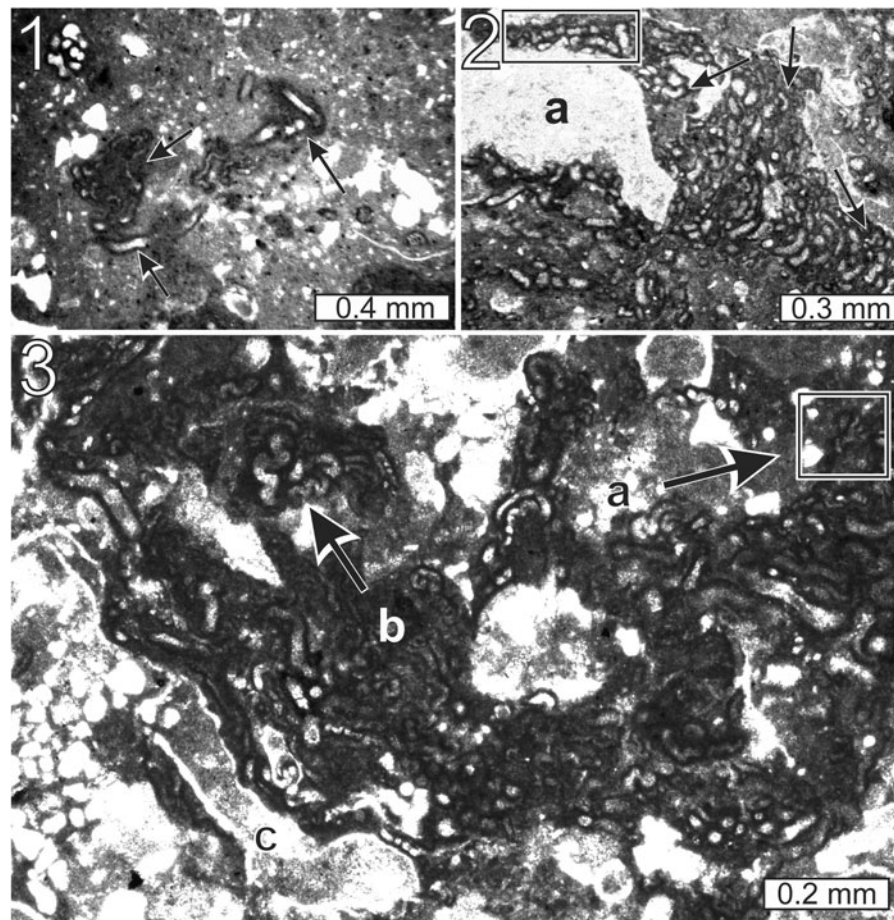
**Figure 7.** Thin-section photomicrographs of constituents within the Woodville mound: (1) cement-filled *Fistulipora* interlayered with third-generation void-fill sediment displaying subparallel orientation (thin section GSA-M262); compare to Webb (1987, fig. 8A); (2) coccoid microfossils (arrow); close-up of Figure 6.2 (thin section GSA-M259); (3) thin-walled cryptic organism (a) in a cement-filled void within a specimen of *Fistulipora*; pore spaces within the bryozoan and fenestrae (b) are filled by geopetal sediment (c) or are lined by possible micropelletal precipitates (d) (thin section GSA-M263); (4) close-up of rectangle indicated in Figure 7.3; *Aphralysia anfracta* n. sp. (a) suspended from the base of a specimen of *Fistulipora*; note the geopetal nature of micropelletal cement within the bryozoan chamber (b) and in a fenestral void (c) (thin section GSA-M263); (5) numerous colonies of *Aphralysia anfracta* n. sp. (arrows) binding sediment, bryozoans (a), and other skeletal elements within the Woodville mound complex (thin section GSA-M264); (6) domal composite structure consisting of alternating microcrystalline microbial layers and thinner layers made by *Aphralysia anfracta* n. sp. (a); similar to Webb (2005, figs. 8B, 12B); the digitate stromatolite envelops a large area of clotted microcrystalline carbonate containing possible monaxon sponge spicules (b) and overlying a large void filled with calcite cement; this could be a badly decayed sponge (thin section GSA-M258).

**Occurrence.**—Hartselle-equivalent (lower Serpukhovian, lower middle Chesterian, upper Mississippian) mound in silty sandy mudstone at site 1 (34.615591°N, 86.225243°W), near Woodville, east of Huntsville, Alabama. Specimens are found encrusting macrofossils or floating in matrix. Tuberooids containing *Aphralysia anfracta* n. sp. occur in sandy silty calcareous mudstone above the mound.

**Description.**—Tubular calcitic microfossils, circular in cross section, walled with dark microcrystalline or microsparitic calcite, commonly, but not invariably, coated with or embedded in microcrystalline carbonate that is lighter in color than the tubule walls, and which extends beyond the tubules to envelop nearby particles (Figs. 9.4, 10.3) or as fingerlike projections. The most characteristic feature of this organism is the highly contorted nature of a minority of the tubules (Fig. 8.3; Supplementary Data 2). These contorted segments range from loosely to tightly curved; curves are regular and symmetrical to irregular and asymmetrical. Tubules cover a

wide range of sizes, and contorted tubules represent the entire size range observed in a given sample (Fig. 8.3). Tubules are not segregated according to diameter, orientation, or degree of curvature. Portions of tubules intersected by the plane of a thin section maintain a nearly constant diameter from end to end. Wall thickness is typically 5–10  $\mu\text{m}$ , inner diameter 10–30  $\mu\text{m}$ , and external diameter 20–45  $\mu\text{m}$  (approximate, mean  $\pm$  1 standard deviation; for raw data, see Supplementary Data 2). In a very few cases, tubules appear to bifurcate (Fig. 8.3). Apparent bifurcations are so rare that they might result simply from chance superposition of unbranched tubules.

Most specimens have an encrusting habit, attaching themselves to larger objects such as bryozoans, gastropods, or other encrusters, such as Problematicum A (see below). Some specimens appear to form, with other encrusters, free-floating oncoids, containing one or a few individuals of *Aphralysia anfracta* n. sp. These can be trapped in voids within the mound boundstone mass or can be attached to it in the third dimension. In a few cases, tubules are randomly oriented



**Figure 8.** Thin-section photomicrographs of *Aphralysia anfracta* n. sp.: (1) tubules (arrows) wandering through enclosing fine sediment, patchily coated with microcrystalline carbonate (thin section GSA-M265); (2) forms characterized by small equant vesicles in gently curving lines (box) and sinuous tight curves (arrows); some tubules in contact with a large calcitic mass (a) have been partially overprinted, suggesting postgrowth neomorphic alteration of a former skeletal allochem (thin section GSA-I33006). (3) holotype, *Aphralysia anfracta* n. sp. boundstone illustrating possible examples of branched tubules (a), a wide size range of tubules, and tightly curved areas (b); the image also contains a possible longitudinal cross section through a specimen of Problematicum A (c) (thin section GSA-M263). Figures 8.1–8.3 each show multiple examples of tightly curved segments of *Aphralysia anfracta* n. sp.

through fine sediment, and have thin and patchy coatings of microcrystalline calcite (Fig. 8.1).

Small, simple encrustations appear to consist of single specimens of *Aphralysia anfracta* n. sp., which gradually increase in diameter from one end to the other (but so gradually, that a uniform diameter is nearly always observed within a single transected part of a tubule). Larger encrustations or free-floating clusters almost certainly consist of multiple individuals.

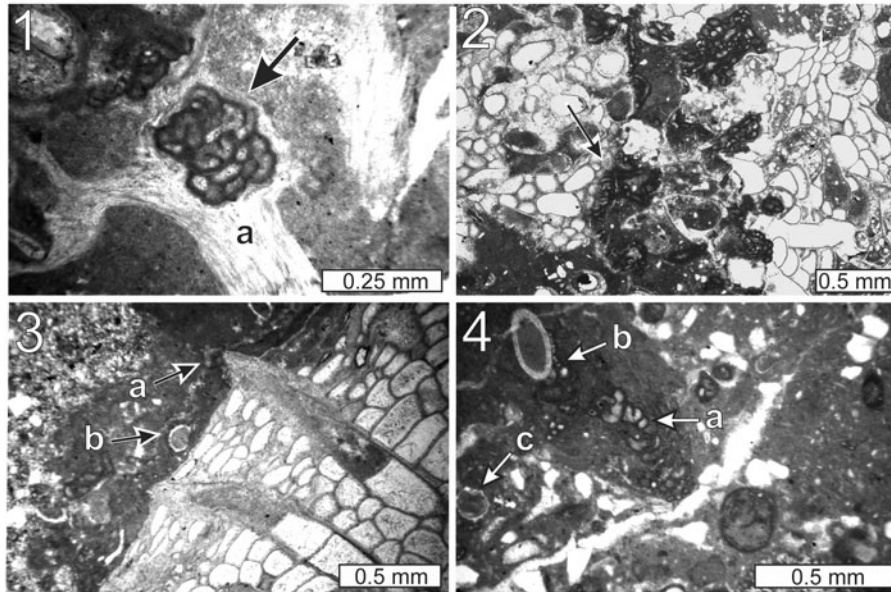
**Etymology.**—The species name is from the Latin *anfractus*, meaning bending or winding, in reference to the tightly curved tubule form that is commonly exhibited by specimens of this species.

**Affinities.**—In this section, we discuss evidence for and against assigning *Aphralysia anfracta* n. sp. to various groups of microfossils.

**Problematica.**—Nonseptate tubules, walled with microcrystalline or finely crystalline calcium carbonate, are common in the Paleozoic. A variety of microorganisms, ranging from foraminiferans to cyanobacteria to problematica, have been

suggested as the makers of *Aphralysia* (personal communications, D. Vachard, B. Granier, and B. Pratt, 2016). Vachard et al. (2016) illustrated examples of several species of the poorly understood encruster *Aphralysia* that were collected from late Visean–early Serpukhovian strata of the Montagne Noire of France. They referred these specimens to cyanobacteria. *Aphralysia ferreoli* Mamet and Roux, 1975 resembles the specimens described here; the tubules of the latter figured by Vachard et al. (2016, fig. 2B, F) present an undulating aspect reminiscent of some of our material. In addition, tubule size and wall structure are similar (Table 2). However, their photographs do not show tight curvature in any of the tubules; the presence of tightly curved tubules is diagnostic of material from the Woodville mound.

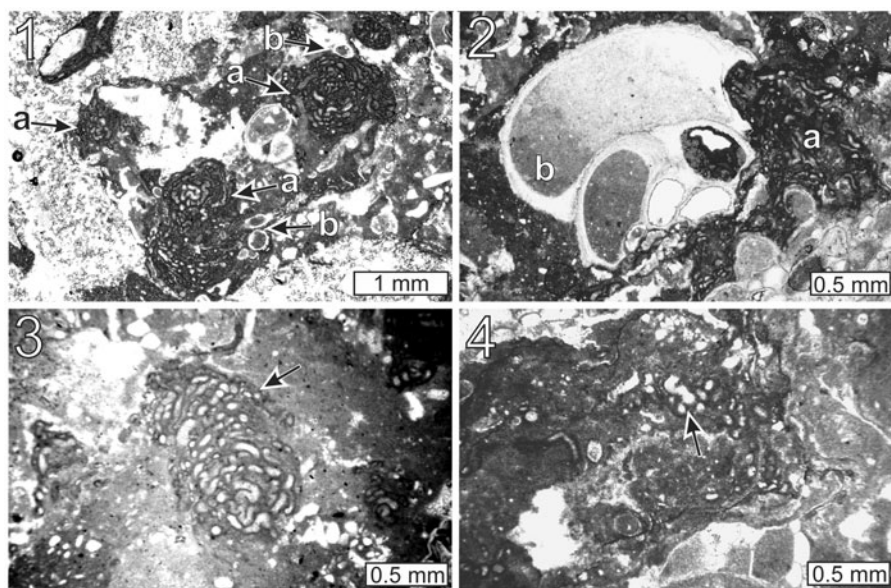
**Calcimicrobes.**—An extensive literature search has not revealed any calcimicrobe with characteristics exactly matching *Aphralysia anfracta* n. sp. However, our material has been suggested to belong to the well-known calcimicrobial genus *Renalcis* Vologdin, 1932 (written communication, B.R. Pratt, 2017). Any resemblance to *Renalcis* is superficial. For example, *Renalcis* exhibits closely spaced branching, whereas



**Figure 9.** Thin-section photomicrographs of *Aphralysia anfracta* n. sp.: (1) arrow, encrusting fenestellid bryozoan (a) and vice versa (thin section GSA-I33006); (2) arrow, encrusting *Fistulipora* (thin section GSA-M261); (3) at (a) and microcrystalline carbonate encrusting *Fistulipora* and Problematicum A (b) (thin section GSA-I33007); (4) at (a), encrusting brachiopod spine (b) and thickly coated with microcrystalline carbonate; Problematicum A (c) is visible in the lower left quadrant of the image (thin section GSA-M263). Note tightly curved segments of *Aphralysia anfracta* n. sp. in Figures 9.1 and 9.4.

*Aphralysia anfracta* n. sp. tubules branch rarely, if at all. Secondly, *Renalcis* is commonly septate or lacks a lumen entirely, whereas *Aphralysia anfracta* n. sp. tubules are neither septate nor solid; most examples appear to consist of single elongate chambers. Tightly curved portions of *Aphralysia anfracta* n. sp. appear to be partially cut by incomplete septa, but this is an illusion, caused by the tight bending of the tubules, and the fact that the doubled tubule wall on the inside of the bend is commonly very thin (Figs. 8.3, 9, 10.4).

Further, both wall thickness and chamber diameter of *Renalcis* are far more variable over short distances (on the order of tens of  $\mu\text{m}$ ). Some of this variability is likely a result of the strong diagenetic overprint on *Renalcis* (Pratt, 1984). Where *Renalcis* is hollow, and not septate, it forms bulbous or cylindrical chambers that are commonly attached to one another, forming a branching network of blobs reminiscent of yeast colonies. This aspect is quite different from the sinuous and unbranched tubes prevalent in *Aphralysia anfracta* n. sp.



**Figure 10.** Thin-section photomicrographs of *Aphralysia anfracta* n. sp.: (1) spheroidal masses (a) embedded in microcrystalline carbonate; Problematicum A (b) is also present in the image (thin section GSA-M263); (2) gastropod encrusted by microcrystalline carbonate and *Aphralysia anfracta* n. sp. (a); geopetal sediment (b) fills a portion of the gastropod chamber (thin section GSA-M263); (3) arrow, enveloped by microbial carbonate, part of thick and complex encrustation on *Fistulipora* (outside field of view) (thin section GSA-I33006); (4) tightly curved tubule form with apparent swollen terminus (arrow) (thin section GSA-M258).

*Cyanobacteria and algae*.—In terms of wall structure and tube diameter, *Aphralysia anfracta* n. sp. resembles some cyanobacterial filaments and microproblematica, such as those illustrated by Riding and Soja (1993). The primary difference between *Aphralysia anfracta* n. sp. and microalgae and cyanobacteria is that the latter two tend to have straight or gently curving tubules. No known members of either of these two groups grow filaments that are tightly bent. One would not expect a photosynthesizing organism, as most cyanobacteria are, to spend as much time growing away from the light as would be required to form tight curves. Also, many cyanobacterial and algal filaments are septate.

*Foraminifera*.—*Aphralysia anfracta* n. sp. tubules resemble various small porcelaneous foraminiferans, in particular, nubeculariids, some of which approximate the characteristic tightly curved tubular morphology in their terminal chambers. These include *Calcivertella* Cushman and Waters, 1928 and *Ammovertella* Cushman, 1928 (examples illustrated by Croneis and Toomey, 1965; Groves, 1983; Vachard et al., 1993; Vachard and Krainer, 2001; Nestell et al., 2006; Cózar et al., 2008, 2009; Błażejowski, 2009), of which the former is a junior synonym of the latter (Vachard and Krainer, 2001). *Minammodytes* Henbest, 1963 exhibits a rudimentary tightly curved form in its terminal chamber (Croneis and Toomey, 1965).

Juvenile portions of these foraminiferans resemble those of other small porcelaneous forms (see e.g., Nestell et al., 2006; Cózar et al., 2009), but many published examples include only the more mature wandering or tightly curved portion of the shells (Groves, 1983; Vachard et al., 1993; Vachard and Krainer, 2001; Cózar et al., 2008). No sections through unequivocal juvenile portions of typical small porcelaneous foraminiferans have been found in specimens of *Aphralysia anfracta* n. sp. in the Woodville mound, or within tubule-bearing tuberoids floating in the Hartselle-equivalent shale nearby. A few small circular chambers, some surrounded by larger chambers, have been found. These might correspond to juvenile parts of specimens of *Aphralysia anfracta* n. sp. (e.g., Fig. 10.4).

*Worm tubes*.—We have found no known fossil worm-tube taxa to which these fossils can be confidently assigned. Most calcified worm tubes are much too large. Serpulid tubes, for instance, are both too large and have a laminated wall structure that is quite unlike that of *Aphralysia anfracta* n. sp.

Sabellid worms make tubes that are contorted like the ones described here, and they are smaller than serpulid tubes, but their typical diameters in the neighborhood of 500  $\mu\text{m}$  are still much larger than those that we found (e.g., Perkins, 1991). A survey of the literature revealed no calcified worm tubes as small as the tubules described here (< 0.1 mm in diameter). To some extent, this could be a result of collecting bias. Smaller worms exist in the Recent, but we know of no examples of calcium-carbonate tubes constructed by them.

*Remarks*.—When examining our specimens at the highest magnification possible with the instruments at our disposal, the tubule walls appear to consist not of microcrystalline calcite, but of equant calcite crystals with diameters approximately the width of the wall. This is similar to diagenetically altered walls described from modern subfossils that resemble *Wetheredella* Wood, 1948 (Kaźmierczak and Kempe, 1992), but could be an agglutinated structure composed of microspar particles collected from the mound.

A tubular fossil that appears to undulate in two dimensions might be created diagenetically by compaction from an originally helical form. In the case of *Aphralysia anfracta* n. sp. in the Woodville mound, such a process is not likely to have taken place. Early cementation of the mound, in the form of: (1) marine cements, and (2) thick encrustations of calcium carbonate that were precipitated by a consortium of nonskeletal microbes and calcimicrobes, appears to have prevented significant compaction. This inference is supported by three observations. First, allochems (e.g., oncoids), larger macrofossils (e.g., sponges), and skeletal debris in general show no noticeable distortion. Second, there is no fracturing of fragile mound components (e.g., gastropods). Third, tightly curved tubules of *Aphralysia anfracta* n. sp. are seen in many different orientations. Vertically and horizontally oriented helices would look quite different from one another after compaction.

Figure 8.2 shows several examples of groups of equant vesicles arranged in straight or gently curving lines, which appear to be specimens of *Aphralysia anfracta* n. sp., based on their association with other tubules. They can be tightly curved tubules that undulate in a plane approximately normal to the plane of the thin section. Other photographs show similar gently curved chains of equant vesicles within specimens of *Aphralysia anfracta* n. sp.

Figure 8.2 also shows partial destruction of tubules by a large mass of what appears to be neomorphic calcite. The overall concentric and convex-outward orientation of tubules and of the

**Table 2.** Sizes of some *Aphralysia*-like forms, scale in  $\mu\text{m}$ .

Reference	Short dimension of vesicles	Source of measurements	Taxon
This study	26 $\pm$ 8 (N = 61) (range 10–40)	Thin section GSA-M262*	<i>Aphralysia capriorae</i> Mamet and Roux, 1975
Rodríguez, 2004	25–50	Estimated by us from their fig. 4C	<i>Aphralysia</i> sp.
Vachard et al., 2016	$\leq$ 25	Estimated by us from their fig. 2E	<i>Aphralysia capriorae</i> Mamet and Roux, 1975
Adams, 1984	5–20	From his text	<i>Aphralysia</i> cf. <i>capriorae</i> Mamet and Roux, 1975
Shen and Webb, 2008	100	From their text	<i>Aphralysia</i> sp.
Jarochowska and Munnecke, 2014	60–200	From their text	<i>Allonema silurica</i> (Wood, 1948)
Garwood, 1914	120	From his text	<i>Aphralysia carbonaria</i> Garwood, 1914
Kaźmierczak and Kempe, 1992	30–180**	From their text	<i>Wetheredella</i> sp.
Vachard and Aretz, 2004	50–80	From their text	<i>Aphralysia capriorae</i> Mamet and Roux, 1975

\*Point-counted; see Supplemental Data 4.

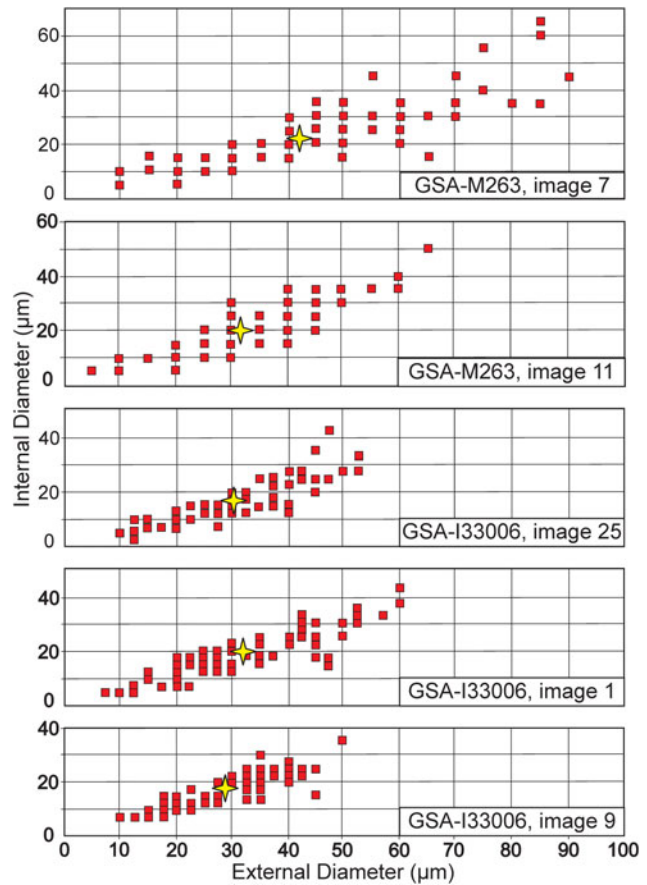
\*\*Including small vesicles, circular in cross section, that are noticeably smaller than many other specimens that they studied.

tubule mass suggests that it encrusted an object that has been replaced by calcite cement, followed by neomorphic replacement of parts of the encrusting tubule mass.

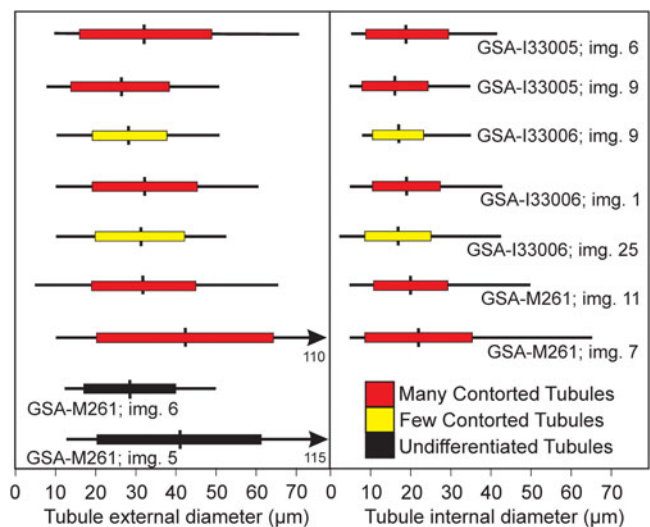
Should all of these specimens, which share a common wall microstructure, be assigned to a single species? The percentage of tubules in a single photograph that are tightly curved ranges 2–54% (Supplementary Data 2). This suggests that two species might occur together, intimately intermingled—an unusual highly contorted species and another much less contorted, but otherwise similar. We measured wall thickness, internal diameter, and external diameter on 604 randomly selected tubules from nine photographs, of which 86 are tightly contorted (Supplementary Data 2). Internal and external diameters are correlated, hence, wall thickness is also correlated with tubule diameter. The size distributions approximate normal distributions, suggesting that only one species is present (Fig. 11). In addition, box plots of both internal and external diameters (Fig. 12) show that means and standard deviations of tubule size for all of these samples are similar, regardless of the proportion of tightly curved tubules that were sampled. We conclude that all of these specimens should be assigned to a single species.

The vesicles of *Aphralysia capriorae* and *Aphralysia carbonaria* differ from those of *Aphralysia anfracta* n. sp. in being rather short and domical. The vesicles of *Aphralysia capriorae* are comparable in their short dimensions to those of *Aphralysia anfracta* n. sp., whereas those of *Aphralysia carbonaria* are considerably larger (Table 2). All species of *Aphralysia* appear to have walls composed of microcrystalline calcite, but those of *Aphralysia capriorae* are thinner and lighter in color than those of *Aphralysia anfracta* n. sp. In addition, specimens of *Aphralysia anfracta* n. sp. exhibit many circular tubule cross sections in thin section, indicating that the tubules are cylindrical. Specimens of *Aphralysia capriorae* from the Woodville mound and some from the literature (e.g., Mamet and Roux, 1975) exhibit few circular tubule cross sections, suggesting that the vesicles seen in thin section are cross sections through objects that are for the most part not cylindrical, but perhaps tabular or loaf-shaped. Some other published photographs of *Aphralysia capriorae* (e.g., Vachard et al., 2016) do contain many vesicles or tubules with circular cross sections, but any attempt to revise this species is beyond the scope of this paper. *Aphralysia matthewsi* Mamet and Roux, 1975, is considerably smaller than all other named species, and *Aphralysia garwoodi* Hallett, 1970, is much larger (vesicles average 400 μm high and 1,800 μm across; vesicle walls averaging 50 μm in thickness). *Aphralysia ferreoli* closely resembles *Aphralysia capriorae* in form but contains vesicles that are elongate in cross section and probably tubular. Previously named species of *Aphralysia*—*Aphralysia capriorae*, *Aphralysia carbonaria*, *Aphralysia ferreoli*, *Aphralysia garwoodi*, and *Aphralysia matthewsi*—do not contain any tightly curved tubules.

Shen and Webb (2008, fig. 9A) referred to *Aphralysia* sp. a specimen from the Viséan of Queensland, Australia, which is remarkably similar to our material. Their specimen includes tubules with rather tight bends, but it is not possible to say without more information whether this is a specimen of *Aphralysia anfracta* n. sp.



**Figure 11.** Scatter plots of measurements of tubule exterior and interior diameters from five thin-section photomicrographs bearing *Aphralysia anfracta* n. sp. Means for each data set are indicated by crosses. Measurements listed in Supplementary Data 2.



**Figure 12.** Box plots of interior vs. exterior diameters of *Aphralysia anfracta* n. sp. specimens measured in nine photomicrographs imaged from Woodville-mound thin sections. Five of the images contained many contorted tubules (> 20% of the total counted). Two were characterized by few contorted tubules (< 20% of the total counted). We did not distinguish between contorted and non-contorted tubules in two of the images (undifferentiated tubules). Measurements listed in Supplementary Data 2.

The most likely example of *Aphralysia anfracta* n. sp. in the published literature comes from Aretz and Herbig (2003, pl. 37, figs. 5, 6, pl. 39, fig. 6). They identified as *Aphralysia* sp. a common encrusting component of Welsh Visean mounds that exhibited numerous tightly bent tubules. The same authors also illustrated a specimen of *Aphralysia* from the Visean of Morocco that appears to contain tightly curved tubule sections (Aretz and Herbig, 2008, fig. 10F).

*Aphralysia capriorae* Mamet and Roux, 1975

Figure 13

- 1975 *Aphralysia capriorae* Mamet and Roux, p. 157, pl. 12, figs. 10–15, pl. 13, figs. 1–3.  
 1978 *Aphralysia* aff. *A. capriorae*; Mamet et al., p. 364, pl. 6, figs. 2, 3.  
 1984 *Aphralysia* sp.; Adams, p. 237, fig. 4?  
 2004 *Aphralysia capriorae*; Vachard and Aretz, p. 649, fig. 7.1, 7.2.  
 2004 *Aphralysia* sp.; Rodríguez, fig. 4C.  
 2008 *Aphralysia* sp.; Shen and Webb, p. 94, figs. 9A, 10C.  
 2016 *Aphralysia capriorae*; Vachard et al., fig. 2E

*Holotype*.—Repository unknown, Ro 42/12 (site 144), Cabrieres, France, zone 16iur., upper Visean (Mamet and Roux, 1975, pl. 12, fig. 13).

*Description*.—Vesicles within oncoids (within the Woodville mound; a similar occurrence was illustrated by Vachard and Aretz, 2004) or encrusting clasts; vesicles wider (parallel to the oncoïd surface) than thick (normal to the oncoïd surface), of equal thickness throughout, or tapering from maximum thickness near center or at one end, tightly clustered or in contact with one another, straight or curved. Curved vesicles convex outward from near center of oncoïd (Fig. 13.1). Vesicles not branching, not septate (Fig. 13.2, 13.3, 13.6). Vesicles unlined, or lining very thin, nearly transparent (Fig. 13.3). Vesicle thickness (normal to oncoïd surface) 10–40 µm, averaging 26 µm. Most vesicles wider than thick as seen in thin section; most considerably shorter than 100 µm in long dimension; a few as long as 200 µm. Vesicles, which can be as much as several hundred micrometers across, not cylindrical, like those of *Aphralysia anfracta* n. sp. Few vesicles with circular cross sections within specimens of *Aphralysia capriorae*; these structures loaf-shaped or tabular.

Vesicles embedded in clotted light to dark-gray microcrystalline carbonate; clots equant to vermiform; to 30–40 µm across (Fig. 13.1–13.3). Small dark gray clots probably rich in remnant organic material. Microcrystalline carbonate in these oncoids interpreted as microbial in origin. *Aphralysia anfracta* n. sp. recognized as minor component in some oncoids on basis of wall structure and tubule diameter. No tightly curved tubules observed in association with *Aphralysia capriorae*.

*Materials*.—Oncoids embedded in the Woodville mound, thin section GSA-M262.

*Remarks*.—For a comparison of *Aphralysia capriorae* and *Aphralysia anfracta* n. sp., see Remarks under the latter species.

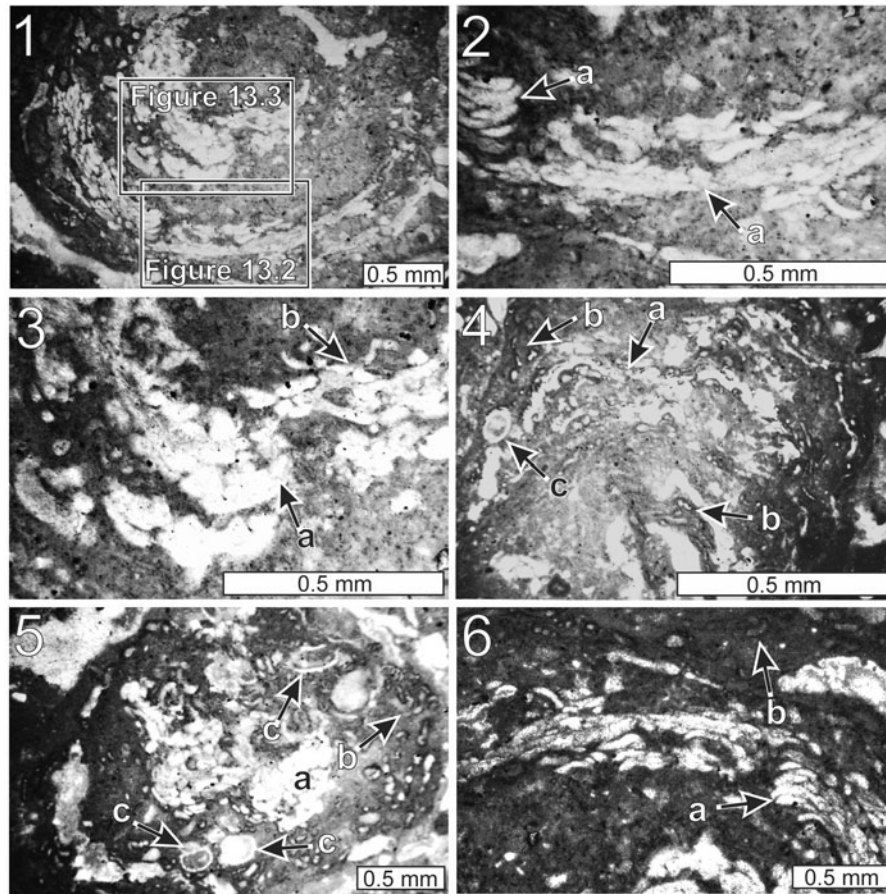
*Sparaphralysia* Vachard in Vachard and Beckary, 1991 has a similar growth habit (Vachard et al., 2001), but vesicles are considerably smaller. *Aphralysia matthewsi* and *Aphralysia garwoodi* both have similar growth habits, but the former is much smaller, and the latter is much larger than *Aphralysia capriorae* (see Hallett, 1970; Mamet and Roux, 1975). *Aphralysia carbonaria*, the type species, also resembles *Aphralysia capriorae*. However, *Aphralysia carbonaria* is significantly larger than *Aphralysia capriorae*, although substantially smaller than *Aphralysia garwoodi* (see Garwood, 1914; Hallett, 1970). *Aphralysia ferrioli* resembles *Aphralysia capriorae*, but the vesicles are wider, and some appear tubular in thin section (Mamet and Roux, 1975).

Specimens identified as *Aphralysia* sp. from the Visean of Poland (Belka, 1981), resemble *Aphralysia capriorae* and are approximately the right size. However, Belka's material is septate and the walls are perforated; these characteristics are not shared either with the material that we assign to *Aphralysia capriorae* nor with specimens illustrated by other authors.

Jarochowska and Munnecke (2014) reinterpreted the problematicum *Allonema* Ulrich and Bassler, 1904 as a foraminiferan (and synonymized another problematicum, *Wetheredella*, with it). These fossils resemble *Aphralysia capriorae*. However, specimens of *Allonema* sp. figured by Jarochowska and Munnecke (2014) have a double-layered wall structure. Our material does not show double-layered walls, but the quality of preservation might be inadequate to make such a determination. Further, Paleozoic *Allonema* and *Wetheredella* spp. have perforate walls (Vachard and Aretz, 2004; Jarochowska and Munnecke, 2014), but the walls of at least some specimens of *Aphralysia* are imperforate (Vachard and Aretz, 2004; Shen and Webb, 2008).

Modern *Wetheredella*-like bioconstructions are cyanobacterial (Kazmierczak and Kempe, 1992). The modern *Wetheredella*-like vesicles described by Kazmierczak and Kempe are imperforate and are therefore probably not closely related to Paleozoic *Wetheredella* to which those authors made comparison. Modern *Wetheredella*-like vesicles resemble *Aphralysia capriorae* in form and wall structure, but they are nearly an order of magnitude larger.

Certain Paleozoic fossils referred to as *Aphralysia* consist of centimeter-scale mounds or clusters of blister-shaped vesicles with microcrystalline or microsparitic carbonate walls. In this, they closely resemble our material. However, the vesicles appear to occupy two distinct size ranges (Table 2). Specimens figured by Vachard et al. (2016, fig. 2E) and Rodríguez (2004, fig. 4C) range to ~50 µm in the short dimension (from the relatively flat base to the convex top of the blister). These fossils range in long dimension from ~1–3 times the short dimension. Specimens figured by Shen and Webb (2008, fig. 9A), Garwood (1914, pl. 21, figs. 3, 4), and Kazmierczak and Kempe (1992, several figures) range in short dimension from ~30–200 µm. Specimens of *Aphralysia capriorae* in our material range in blister height 10–40 µm, averaging ~26 ± 8 µm (Supplemental Data 4). These are comparable in size to the smaller examples of *Aphralysia capriorae* and similar specimens of *Aphralysia* found in the published literature (e.g., Adams, 1984; Rodríguez, 2004; Vachard et al., 2016). Other published photographs of *Aphralysia* cited above show vesicles that are substantially larger than those that we found (Table 2). This consistent difference in size suggests that small and large specimens of *Aphralysia* of



**Figure 13.** Thin-section photomicrographs of *Aphralysia capriorae* Mamet and Roux, 1975 (all from thin section GSA-M265): (1) portion of oncooid, embedded in mound, constructed by a consortium of *Aphralysia capriorae*, minor *Aphralysia anfracta* n. sp., and nonskeletal microbes; (2, 3) close-ups of Figure 13.1: *Aphralysia capriorae* (a), *Aphralysia anfracta* n. sp. (b); (4–6) portions of oncooid constructed by a consortium of *Aphralysia capriorae* (a), *Aphralysia anfracta* n. sp. (b), Problematicum A (c), and nonskeletal microbes.

the *capriorae* type were made by two different kinds of organisms.

### Other binding and encrusting problematica

#### Problematicum A

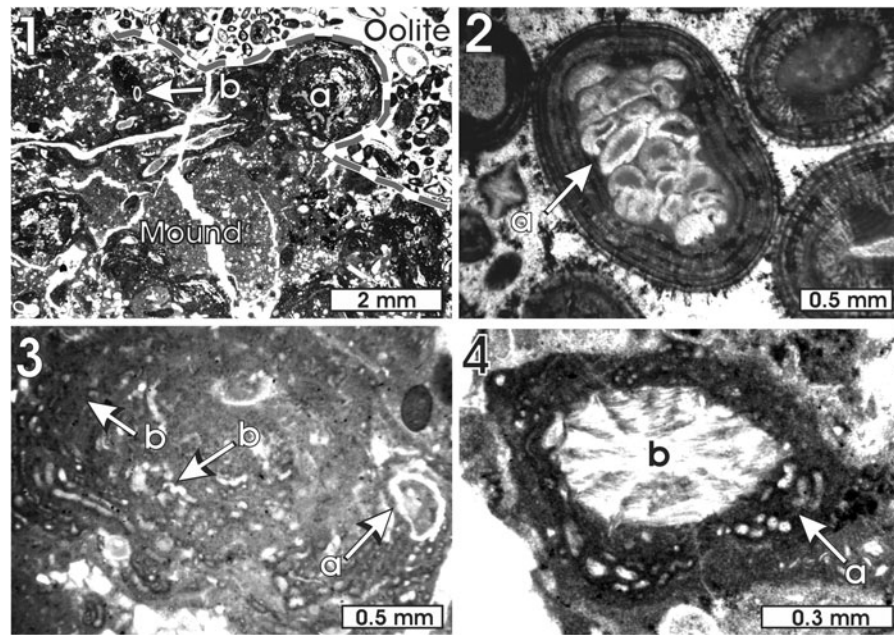
Figures 6.4, 8.3, 9.3, 9.4, 10.1, 13.4, 13.5, 14.1, 14.3

**Materials.**—Thin sections GSA-M257, M258, M261, and M262.

**Remarks.**—The boundstone bodies that make up the Woodville mound incorporated skeletal debris and were themselves syndepositionally encrusted by thin-walled tubes of calcite, which appear white in plane-polarized light. These tubes are 125–250  $\mu\text{m}$  in diameter and are filled with dark microcrystalline carbonate, in some cases, calcite cement. Tube walls are 15–30  $\mu\text{m}$  thick. Tubes vary in shape, ranging in cross section from subrounded to oval to semicircular. Semicircular tubes in some cases show blunt projections in cross section from the curved side extending past the straight side (Fig. 14.3), which are similar to those of Problematicum B (although wall structure is very different). Where the

thin-walled tubes are visible in approximately longitudinal section, they are seen to pinch and swell, in some cases resembling a set of connected chambers (Figs. 6.4, 14.1). The walls themselves vary from smooth to roughly covered with sharp to blunt small protrusions on outer surfaces and are smooth on their inner surfaces. A variety of problematic Paleozoic worm tubes have been referred to the tentaculitoids by Taylor et al. (2010), which those authors considered to be allied to the lophophorates. Problematicum A superficially resembles one group of these, called the microconchids. However, all but the smallest microconchids are at least several times greater in diameter than any specimens of Problematicum A, and they have much thicker walls. In addition to the size difference, microconchids tend to be either more uniform in diameter or conical; many bear both annulae and longitudinal striations; and spines, where present, tend to be relatively large, stout, and evenly spaced (Vinn and Mutvei, 2005; Taylor and Vinn, 2006; Zhan and Vinn, 2007; Taylor et al., 2010; Vinn, 2010; Vinn and Wilson, 2010; Wilson et al., 2010). The affinities of Problematicum A are unknown.

#### Problematicum B Figure 14.2



**Figure 14.** Thin-section photomicrographs of constituents within the Woodville mound: (1) small oncoïd (a) near the periphery of the Woodville mound (dashed line) in direct contact with adjacent oolite, and Problematicum A (b) (thin section GSA-M265); (2) cluster of Problematicum B (a) serving as an ooid nucleus; (3) specimen of Problematicum A (a) incorporated into an oncoïd constructed by a consortium of *Aphralysia anfracta* n. sp. (b) and nonskeletal microbes (thin section GSA-M265); (4) cortex of a small oncoïd within the Woodville mound composed mostly of *Aphralysia anfracta* n. sp. (a); the oncoïd nucleus is a fenestellid bryozoan (b) (thin section GSA-M260).

**Materials.**—Thin section GSA-M262.

**Remarks.**—This is a microfossil preserved within an ooid in the ooid grainstone directly beneath the Woodville mound (Fig. 14.2). The ooid nucleus consists primarily of a cluster of calcite vesicles that are individually to 0.15 mm high and to 0.28 mm wide; vesicles are ovoid to hemispherical; many hemispherical vesicles have blunt-pointed projections extending from a convex side past a roughly linear side (Fig. 14.2).

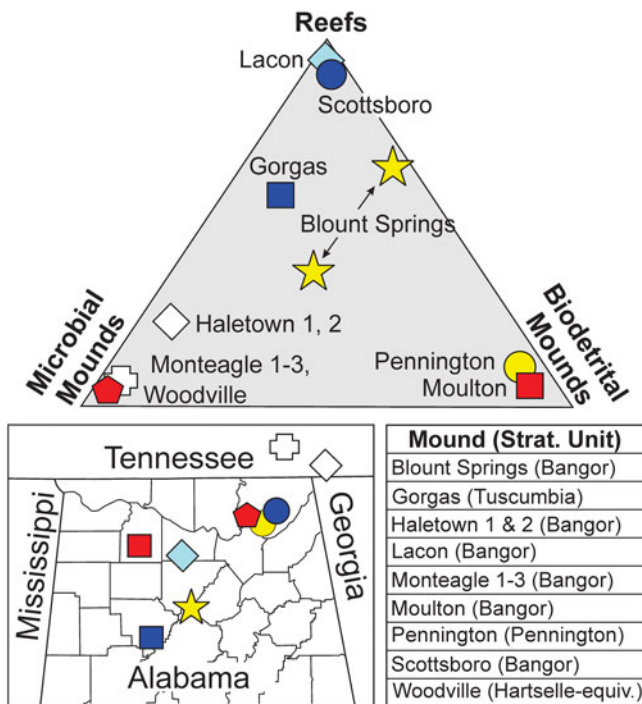
## Discussion

The Woodville mound was built by a consortium of organisms (including *Aphralysia anfracta* n. sp., *Aphralysia capriorae*, and Problematicum A) strikingly different from those that built any previously described Mississippian mounds or reefs in or near Alabama (Gibson, 1986; Kopaska-Merkel and Haywick, 2001, 2014; Kopaska-Merkel et al., 2013; Fig. 15). Most previously described mounds and reefs contain abundant fenestellid bryozoans, crinoids, and rugose corals, none of which are common in the Woodville mound. The Moulton mound, which is the largest known in Alabama, is a biodetrital structure built by rugose corals, crinoids, and fenestellid bryozoans (Kopaska-Merkel and Haywick, 2001). The three small mounds in the Bangor Limestone near Monteagle, Tennessee are the only other buildups that we have examined that plot at the microbial pole on the ternary diagram (Fig. 15). These mounds are crinkly-laminated planar stromatolites. Thin sections reveal that they have been thoroughly dolomitized, and that they contained sponges (Kopaska-Merkel and Haywick, 2014). Carboniferous mounds in and near Alabama are united by their diversity, scarcity, and ultimately, their small size.

Miniaturization is a well-known indicator of environmental stress in individual organisms (e.g., Urbanek, 1993; He et al., 2007). By analogy, miniaturization and reduction in number of organosedimentary structures suggest a poor fit between members of the mound community and prevailing environmental conditions. The skeletal materials that constitute part of the mound differ from macroscopic fauna on the surrounding shelf. For example, fenestellid bryozoans are abundant as ooid nuclei and as noncoated fossil fragments in ooid packstone-grainstone directly beneath the Woodville mound, but few were observed within the mound (Fig. 14.4).

The Woodville mound was a firm structure containing significant void space. It likely began to grow atop a hardground formed during marine cementation of an oolitic grainstone (Fig. 16.1). Carbonate sedimentation occurred intermittently during siliciclastic sedimentation as evidenced by the interbedded limestone-shale strata that compose the Hartselle-equivalent interval in the study area. The Woodville mound arose directly from the seafloor to its full height of just over one meter during a hiatus in sedimentation (Fig. 16.2). Upon resumption of siliciclastic sedimentation, the oolite and mound were both covered by interbedded thin layers of fossil hash and thicker shale beds, terminating skeletal colonization and microbial growth (Fig. 16.3). There is no evidence of siliciclastic material within the constructed portion of the mound. Quartz and possibly detrital dolomite are restricted to third-generation voids. Microencrusts grew on skeletal debris or other encrusters. Early void spaces were filled by carbonate mud or precipitated calcite (Fig. 16.4). Limonitic sediment infiltration of void spaces within the mound and in the underlying oolitic grainstone occurred when deposition on the shallow marine platform was transitioning back to siliciclastic sedimentation (Figs. 5.3,





**Figure 15.** Ternary classification of mound construction, locations and stratigraphic associations of Serpukhovian (Chesterian) reefs, and mounds in and near Alabama. Apices correspond to pure framework reefs, mounds constructed entirely by microbial organisms, and mounds consisting of biotrital debris. Modified from Kopaska-Merkel and Haywick (2014). Data also from Gibson (1986), Kopaska-Merkel and Haywick (2001), Kopaska-Merkel et al. (2013), and Haywick et al. (2016).

16.5). The sheer quantity of void-filling carbonate (e.g., Fig. 5.3–5.5) and no indication of collapse of the voids implies that the mound was significantly indurated before the onset of calcareous sandy shale deposition. This is supported by the presence of mound-derived tuberoids in the enclosing sediment. The only evidence of compaction in the field was in the shale layers that were deformed where they made contact with the mound. All evidence leads us to conclude that the Woodville mound arose as a single column from the seafloor and that it was a remarkably porous structure during growth. In this respect, the Woodville mound resembled a classic columnar stromatolite, but with a more diverse microbiota.

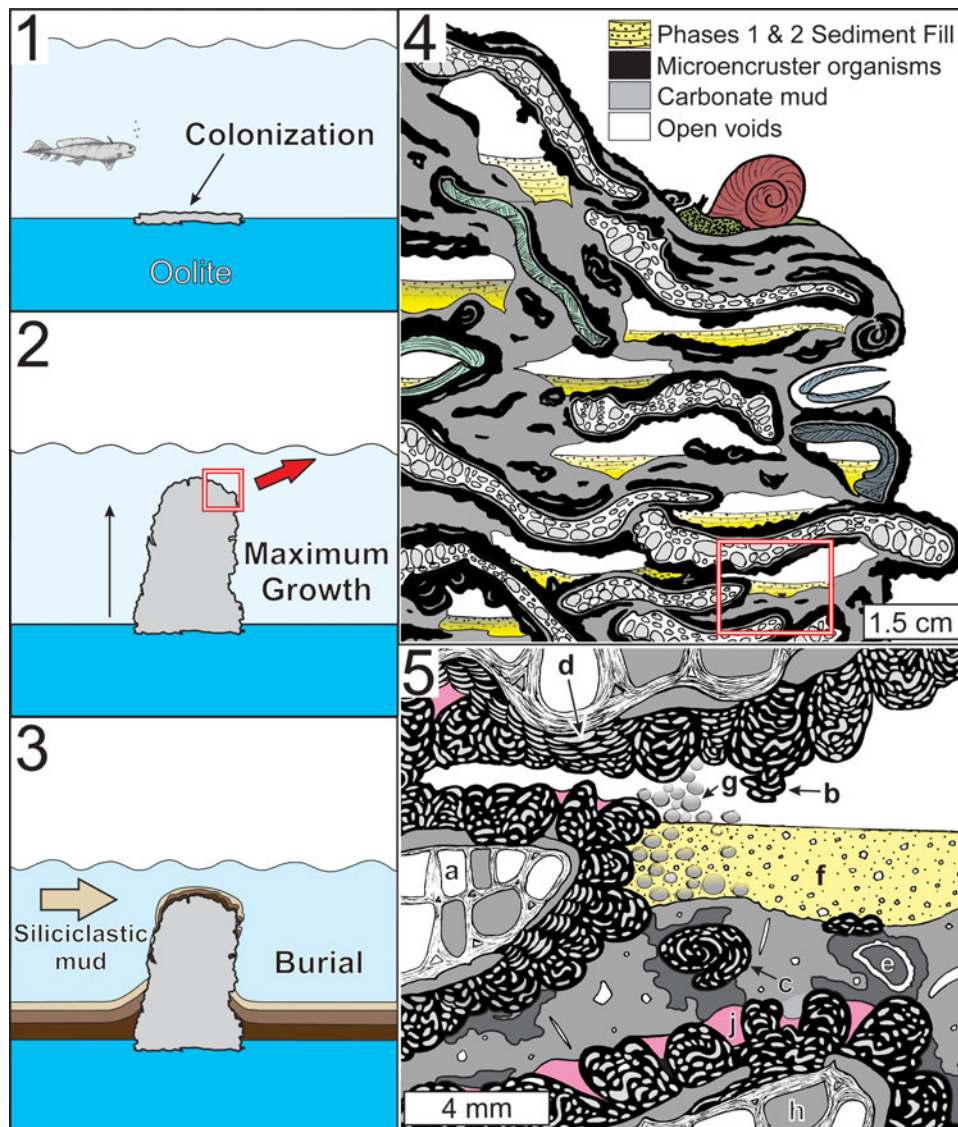
*Aphralysia* and other microorganisms played important roles in binding lower Carboniferous buildups elsewhere in the world. Reefs in the Visean Cannindah Limestone of Queensland, Australia, contain *Aphralysia* cf. *A. capriorae* and other calcimicrobes as binders (Shen and Webb, 2005, fig. 5D; 2008, figs. 9A, 10C). These reefs, which grew on carbonate banks, are much larger and more taxonomically diverse than the Woodville mound (Shen and Webb, 2008). Similarly, Tournaisian reefs in the Gudman Formation of Queensland contain minor amounts of *Aphralysia* as encrusters and binders. These reefs are considerably larger than the Woodville mound, but, like the latter, nucleated on high-energy, shallow-water carbonate rocks (Webb, 2005). *Aphralysia* was a minor to major component of Visean bioherms in Britain (Garwood, 1914; Adams, 1984; review by Webb, 1994; Aretz and Herbig, 2003), Belgium

(Mamet et al., 1978), and Spain (Rodríguez, 2004; Rododríguez et al., 2007; Rodríguez-Martínez et al., 2010, 2012), which grew in settings ranging from platform margin to midramp to protected marine shelf. Species of *Aphralysia* described by Mamet and Roux (1975), collected from Britain and France, range in age from Tournaisian to Serpukhovian, but their paleoenvironmental settings were not described. Visean mounds in Morocco contain encrusting specimens of *Aphralysia* that were not identified to the species level, but probably belong to *Aphralysia anfracta* n. sp. (Aretz and Herbig, 2008, fig. 10). *Aphralysia* is a minor component of these mounds, which grew on a high-energy, shallow-marine platform (Aretz and Herbig, 2008). *Aphralysia* occurs in Australia, North America, western Europe, and northern Africa, but is common only locally in Great Britain, Spain, and in the Woodville mound. *Aphralysia* had a considerable paleogeographic distribution, and ranged throughout the Mississippian (contra Vachard et al., 2016), but because it is small and unobtrusive, it can be overlooked in mounds where it is uncommon. Late Chesterian mounds in the Pitkin Formation of Arkansas were deposited across a marine carbonate shelf (Jehn and Young, 1976; Webb, 1987). Faunally diverse, these mounds are dominated by thrombolite, but include microbial and metazoan constituents. The Pitkin thrombolite mounds are much larger than the Woodville mound and were probably deposited in deeper water (Jehn and Young, 1976; Webb, 1987). *Aphralysia* has not been reported from the Pitkin mounds, but their age and paleoenvironmental setting are similar to those of reefs and mounds where *Aphralysia* has been found. Environmental controls that might have excluded *Aphralysia* from Mississippian mounds that grew on marine carbonate shelves (e.g., Webb, 1999; Aretz, 2002) are not yet understood. Younger and older mounds (Devonian and upper Carboniferous) were dominated by different suites of mound-building organisms and generally do not contain *Aphralysia* (e.g., Krainer et al., 2003; Shen and Webb, 2010). One possible Devonian occurrence of *Aphralysia* is in the Givetian Hanonet-Trois Fontaines formations of Belgium (Mamet and Pr at, 2009, pl. 2, figs. 3, 4). Other reports of *Aphralysia* from before or after the Mississippian cannot be substantiated on the basis of the evidence given (e.g., Mamet and Boulvain, 1992).

## Conclusions

A small carbonate mound is described from siliciclastic-dominated, Hartselle-equivalent strata near Woodville, Alabama. The Woodville mound is the only known carbonate mound in the Serpukhovian (Chesterian) Hartselle-equivalent strata in Alabama, and was built by a previously unknown consortium, including *Aphralysia anfracta* n. sp., a new species of microproblematicum.

Mound builders included *Fistulipora*, which provided a distributed structural framework and might have encrusted other mound components, and several encrusting taxa: nonskeletal microbes produced thrombolite (microcrystalline carbonate), which is volumetrically the most abundant encrusting component, and the organisms that made *Aphralysia anfracta* n. sp. and *Aphralysia capriorae* were a close second and third.



**Figure 16.** Schematic and artist's representations of the Woodville mound: (1–3) summary of the life cycle of the mound from colonization atop an oolite hardground, through maximum growth during an absence of sedimentation, and finally burial during the resumption of siliciclastic mud sedimentation; (4) artistic interpretation of the interior of the Woodville mound during the growth phase; for simplification purposes at this scale, microbial elements are not separately distinguished and nonbiogenic components are reduced to carbonate mud, phase 1/2 sediment fill, and open voids; bryozoans, mollusks, and brachiopods are the only skeletal elements shown in this interpretation; (5) close-up of the boxed area in Figure 16.4, focusing on the microscopic components of the Woodville mound; *Aphralysia anfracta* n. sp. is the dominant microencruster, coating skeletal elements such as bryozoans (a), forming pendants in what were likely open voids (b), and is also a common component of isolated oncooids (c). *Aphralysia capriorae* Mamet and Roux, 1975 (d) also encrusts skeletal elements and forms oncooids. Problematicum A is usually found within areas of carbonate mud (e). The voids in this interpretation are largely empty except for geopetal fill by Phase 1/2 carbonate sediment (f) and small carbonate peloids that are likely the product of microbial processes (g). Other void-filling elements depicted in this interpretation are mud-filled intraskeletal pores within bryozoans (h) and marine (or possibly very early postdepositional) calcite cement within shelter voids (j).

The maker of Problematicum A was a fairly common and widespread encruster.

Minor components of the Woodville mound include cryptic sponges, tiny cryptic microbes, and other organisms that either were trapped in the mound or dwelled there voluntarily (e.g., small gastropods and rare fenestellid bryozoans).

Lower Carboniferous mounds are plentiful in the southeastern USA. *Aphralysia*, previously unrecognized in this area, could be an important contributor to many of them. *Aphralysia* has now been recognized as a component of lower Carboniferous, shallow-water, carbonate mounds in Australia, North America, western Europe, and northern Africa. We reconsider

the taxonomic affinities of *Aphralysia*, in light of the new species' morphology, and conclude that the maker was likely not photosynthetic. This, in turn, has implications for paleoenvironmental interpretation. Although the Woodville mound is small, it can contribute significantly to our understanding of late Paleozoic microbial evolution and bioherm development.

#### Acknowledgments

We thank the following for advice and other assistance: B. Axsmith, the late R. Folk, B. Granier, R. Hoover, B. Pratt, B. Ray, A. Rindsberg, and D. Vachard, as well as several

members of the PaleoNet community. T. Harrell and D. Hills reviewed the manuscript. B. Tew, State Geologist of Alabama, gave permission for publication of this report.

### Accessibility of supplementary data

Data available from the Dryad Digital Repository: <http://zoobank.org/d3988875-a7fb-4382-bd14-b17c083d87ad>.

**Supplementary Data 1.** Locations of sites referred to in this paper, datum = WGS 84.

**Supplementary Data 2.** Size measurements of tubules of *Aphralysia anfracta* n. sp.

**Supplementary Data 3.** Sample numbers.

**Supplementary Data 4.** Size measurements of *Aphralysia capriorae* vesicles in specimen GSA-M265.

### References

- Adams, A.E., 1984, Development of algal-foraminiferal-coral reefs in the lower Carboniferous of Furness, northwest England: *Lethaia*, v. 17, p. 233–249.
- Agassiz, L., 1843, Recherches sur les Poissons Fossiles, Volume 3: La Petit-Pierre, France, Neuchâtel and Soleure, 390 p.
- Andronaco, P., 1986, Lithofacies, depositional environments, and cyclicity of the Bangor Limestone in Blount County, north-central Alabama [MS thesis]: Tuscaloosa, University of Alabama, 250 p.
- Aretz, M., 2002, Rugose corals and associated carbonate microfossils from the Brigantian (Mississippian) of Castelsec (Montagne Noire, southern France): *Geobios*, v. 35, p. 187–200, doi:10.1016/S0016-6995(02)00018-9.
- Aretz, M., and Herbig, H.-G., 2003, Coral-rich bioconstruction in the Viséan (late Mississippian) of southern Wales (Gower Peninsula, UK): *Facies*, v. 49, p. 221–242, doi:10.1007/s10347-003-0033-y.
- Aretz, M., and Herbig, H.-G., 2008, Microbial-sponge and microbial-metazoan buildups in the late Viséan basin-fill sequence of the Jerada Massif (Carboniferous, NE Morocco): *Geological Journal*, v. 43, p. 307–336, doi:10.1002/gj.1120.
- Belka, Z., 1981, The alleged algal genus *Aphralysia* is a foraminifer: *Neues Jahrbuch für Geologie und Paläontologie Monatshefte*, v. 5, p. 257–266.
- Błażejowski, B., 2009, Foraminifers from the Treskelodden Formation (Carboniferous–Permian) of south Spitsbergen: *Polish Polar Research*, v. 30, p. 193–230, doi:10.4202/ppres.2009.10.
- Burdick, D.W., and Strimple, H.L., 1971, Crinoids from the Beech Creek Limestone, Golconda Group, St. Clair County, Illinois, part 2: Faunal studies of the type Chesterian, upper Mississippian of southwestern Illinois: University of Kansas Paleontological Contributions, no. 51, p. 15–47.
- Butts, C., 1917, Descriptions and correlations of the Mississippian formations of western Kentucky: *Kentucky Geological Survey Series*, v. 5, 119 p.
- Butts, C., 1922, The Mississippian series of eastern Kentucky: *Kentucky Geological Survey Series*, v. 5, 188 p.
- Cózar, P., Somerville, I.D., and Burgess, I., 2008, New foraminifers in the Viséan/Serpukhovian boundary interval of the Lower Limestone Formation, Midland Valley, Scotland: *Journal of Paleontology*, v. 82, p. 906–923, doi:10.1666/07-103.1.
- Cózar, P., Somerville, I.D., and Burgess, I., 2009, Foraminiferal, calcareous algal and problematica assemblages from the Mississippian Lower Limestone Formation in the Midland Valley, Scotland: *Earth and Environmental Science Transactions of the Royal Society of Edinburgh*, v. 100, p. 297–309, doi:10.1017/S1755691010008029.
- Croneis, C., and Toomey, D.F., 1965, Günsight (Virgilian) wewokellid sponges and their depositional environment: *Journal of Paleontology*, v. 39, p. 1–17.
- Cushman, J.A., 1928, Additional genera of the Foraminifera: Contributions from the Cushman Laboratory for Foraminiferal Research, v. 4, p. 1–8.
- Cushman, J.A., and Waters, J.A., 1928, Upper Paleozoic Foraminifera from Sutton County, Texas: *Journal of Paleontology*, v. 2, p. 358–371.
- Defrance, J.L.M., 1819, Dictionnaire des Sciences Naturelles, Volume 14: Paris, F.G. Levrault, 467 p.
- Ettensohn, F.R., Ausich, W.I., Kammer, T.W., Johnson, W.K., and Chesnut, D.R., Jr., 2007, Carboniferous echinoderm zonation in the Appalachian Basin, eastern USA, in Wong, T.E., ed., Proceedings of the 25th International Congress on Carboniferous and Permian Stratigraphy, Utrecht, The Netherlands, 10–16 August 2003: *Geologie en Mijnbouw*, v. 84, p. 177–189.
- Galloway, J., and Kaska, H., 1957, Genus *Pentremites* and its species: *Geological Society of America Memoir*, v. 69, 130 p.
- Garwood, E.J., 1914, Some new rock-building organisms from the lower Carboniferous beds of Westmorland: *Geological Magazine*, v. 51, p. 265–271.
- Gibson, M.A., 1986, Paleoecology and biostratigraphic implications of a fenestrate bryozoan buildup in a non-carbonate environment, Pennington Formation (late Mississippian), Alabama: *The Compass*, v. 64, p. 23–29.
- Groves, J.R., 1983, Calcareous foraminifers and algae from the type Morrowan (Lower Pennsylvanian) region of northeastern Oklahoma and northwestern Arkansas: *Oklahoma Geological Survey Bulletin*, v. 133, 65 p.
- Gutschick, R.C., 1965, *Pterotocrinus* from the Kinkaid Limestone (Chester, Mississippian) of Illinois and Kentucky: *Journal of Paleontology*, v. 39, p. 636–646.
- Hall, J., 1858, Paleontology of Iowa, in Hall, J., and Whitney, J.D., Report of the Geological Survey of the State of Iowa, Embracing the Results of Investigations Made During Portions of the Years 1855, 56 & 57: *Palaeontology*, Volume 1, Part 2: Des Moines, Legislature of Iowa, p. 473–724.
- Hall, J., 1859, Contributions to the palaeontology of Iowa, being descriptions of new species of Crinoidea and other fossils: *Geological Report of Iowa*, supplement to v. 1, pt. 2, p. 1–92.
- Hall, J., 1883, New York State Geologist, Report for the Year 1882 (second annual): Brachiopoda, plates and explanations: Albany, New York, Weld, Parsons and Company, p. 34–61.
- Hallett, D., 1970, Foraminifera and algae from the Yoredale ‘Series’ (Viséan–Namurian) of northern England, in *Compte Rendu, Sixième Congrès International de Stratigraphie et de Géologie du Carbonifère*, Sheffield, 1967: Maastricht, The Netherlands, E. Van Aelst, p. 873–885.
- Hambach, G., 1903, A revision of the Blastoideae: *Transactions of the Academy of Science of St. Louis*, v. 13, p. 1–67.
- Haywick, D.W., Kopaska-Merkel, D.C., and Keyes, R., 2016, Petrographic and faunal characteristics of Monteagle and Hartselle-equivalent strata in northeast Alabama: *Gulf Coast Association of Geological Societies Transactions*, v. 66, p. 211–229.
- He, W., Shi, G.R., Feng, Q., Campi, M.J., Gu, S., Bu, J., Peng, Y., and Meng, Y., 2007, Brachiopod miniaturization and its possible causes during the Permian–Triassic crisis in deep water environments, South China: *Palaeogeography, Palaeoclimatology, Palaeoecology*, v. 252, p. 145–163, doi:10.1016/j.palaeo.2006.11.040.
- Henbest, L.G., 1963, Biology, mineralogy, and diagenesis of some typical late Paleozoic sedentary Foraminifera and algal-foraminiferal colonies: Cushman Foundation for Foraminiferal Research Special Publication, v. 6, p. 1–44.
- Horowitz, A.S., 1965, Crinoids from the Glen Dean limestone (middle Chester) of southern Indiana and Kentucky: *Indiana Geological Survey Bulletin*, v. 34, 51 p.
- James, N.P., and Choquette, P.W., 1984, Diagenesis 9, Limestones—The meteoric diagenetic environment: *Geoscience Canada*, v. 11, p. 161–194.
- Jarochowska, E., and Munnecke, A., 2014, The Paleozoic problematica *Wetheredella* and *Allonema* are two aspects of the same organism: *Facies*, v. 60, p. 651–662, doi:10.1007/s10347-014-0399-z.
- Jehn, P. J., and Young, L. M., 1976, Depositional environments of the Pitkin Formation, northern Arkansas: *Journal of Sedimentary Research*, v. 46, p. 377–386.
- Kaźmierczak, J., and Kempe, S., 1992, Recent cyanobacterial counterparts of Paleozoic *Wetheredella* and related problematic fossils: *Palaios*, v. 7, p. 294–304.
- Keyes, R.G., 2014, Common and index macrofossils and stratigraphic sequence of the Mississippian System in the Tennessee Valley of north Alabama, in Puckett, T.M., and Rindsberg, A.K., eds., *Stratigraphy and Depositional Systems in the Mississippian Strata of the Appalachian Plateau, northwest Alabama, A Guidebook for the 51st Annual Field Trip: Alabama Geological Society Guidebook*, v. 51, p. 137–196.
- Keyes, R.G., 2015, Fossils of the Tennessee Valley: Huntsville, Alabama, Amazon, 131 p.
- Keyes, R.G., 2018, Crinoids from the lower Bangor biota (Upper Mississippian) in northwest Alabama: *Geological Society of America Abstracts with Programs*, v. 50, no. 6, paper no. 88-5, doi: 10.1130/abs/2018AM-317809.
- Kopaska-Merkel, D.C., and Haywick, D.W., 2001, A lone biotriteral mound in the Chesterian (Carboniferous) of Alabama?: *Sedimentary Geology*, v. 145, p. 253–268, doi:10.1016/S0037-0738(01)00151-8.
- Kopaska-Merkel, D.C., and Haywick, D.W., 2014, Small carbonate buildups in the Bangor Limestone (Chesterian) in and near Alabama, in Puckett, T.M., and Rindsberg, A.K., eds., *Stratigraphy and Depositional Systems in the Mississippian Strata of the Appalachian Plateau, Northwest Alabama, A Guidebook for the 51st Annual Field Trip: Alabama Geological Society Guidebook*, v. 51, p. 111–138.
- Kopaska-Merkel, D.C., and Rindsberg, A.K., 2016, Bioirrigation in *Alph n. igen.*, arthropod cubichnia from the Mississippian Hartselle Sandstone of Alabama (USA): *Geodinamica Acta*, v. 28, p. 1–19, doi:10.1080/09853111.2015.1108569.
- Kopaska-Merkel, D.C., Mann, S.D., and Pashin, J.C., 2013, Sponge-microbial mound in Mississippian Tuscumba Limestone, subsurface Walker County, Alabama, in Mancini, E.A., Morgan, W.A., Ahr, W., Parcell, W., Dias-Brito, D., and Harris, P.M., eds., *Microbial Carbonate Reservoirs:*

- American Association of Petroleum Geologists Bulletin, v. 97, p. 1871–1893, doi:10.1306/07151312195.
- Krainer, K., Flügel, E., Vachard, D., and Joachimski, M.M., 2003, A close look at late Carboniferous algal mounds: Schülterkofel, Carnic Alps, Austria: *Facies*, v. 49, p. 325–350, doi:10.1007/s10347-003-0037-7.
- Lees, A., and Miller, J., 1995, Waulsortian banks, in Monty, C.L.V., Bosence, D.W.J., Bridges, P.H., and Pratt, B.R., eds., *Carbonate Mud-Mounds: Their Origin and Evolution*: International Association of Sedimentologists Special Publication, v. 23, p. 191–271.
- Lyon, S.S., 1857, Echinoderms, in Lyon, S.S., Cox, E.T., and Lesquereux, L., *Palaeontological Report: Geological Report of Kentucky*, v. 3, p. 467–497.
- Lyon, S.S., and Casseday, S.A., 1859, Description of nine new species of Crinoidea from the subcarboniferous rocks of Indiana and Kentucky: *American Journal of Science and Arts*, ser. 2, v. 28, p. 233–246.
- Lyon, S.S. and Casseday, S.A., 1860, Description of nine new species of Crinoidea from the subcarboniferous rocks of Indiana and Kentucky: *American Journal of Science and Arts*, Series 2, v. 29, p. 68–79.
- Mamet, B.L., and Boulvain, F., 1992, Microflore des monticules micritiques Frasnien 'F2j' de Belgique: *Revue de Micropaléontologie*, v. 35, p. 283–302.
- Mamet, B.L., and Prétat, A., 2009, Algues et microfossiles problématiques du Dévonien Moyen du 'Fondry des Chiens' (bord sud du Synclinorium de Dinant, Belgique): Implications paléobathymétriques: *Revue de Micropaléontologie*, v. 52, p. 249–263, doi:10.1016/j.revmic.2008.06.001.
- Mamet, B.L., and Roux, A., 1975, Algues dévoniennes et carbonifères de la Téthys occidentale, troisième partie: *Revue de Micropaléontologie*, v. 18, p. 134–187.
- Mamet, B.L., Mortelmans, G., and Roux, A., 1978, Algues viséennes du Sondage de Turnhout (Campine, Belgique): *Annales de la Société Géologique de Belgique*, v. 101, p. 351–383.
- McChesney, J.H., 1859, Descriptions of new species of fossils from the Paleozoic rocks of the western states: *Transactions of the Chicago Academy of Science*, v. 1, 76 p.
- McChesney, J. H., 1860, Descriptions of new fossils from the Paleozoic rocks of the western states: *Chicago Academy of Science Transactions*, v. 2, p. 77–95.
- M'Coy, F., 1849, On some new genera and species of Palaeozoic corals and Foraminifera: *Annals and Magazine of Natural History*, v. 2, p. 119–136.
- Meek, F.B., and Worthen, A.H., 1860, Descriptions of new species of Crinoidea and Echinoidea from the Carboniferous rocks of Illinois, and other western states: *Proceedings of the Academy of Natural Sciences of Philadelphia*, v. 12, p. 379–397.
- Meek, F.B., and Worthen, A.H., 1861, Descriptions of new Palaeozoic fossils from Illinois and Iowa: *Proceedings of the Academy of Natural Sciences of Philadelphia*, v. 13, p. 128–148.
- Meek, F.B., and Worthen, A.H., 1866, Contributions to the palaeontology of Illinois and other western states: *Proceedings of the Academy of Natural Sciences of Philadelphia*, v. 17, p. 251–274.
- Meek, F.B., and Worthen, A.H., 1873, Palaeontology of Illinois: Descriptions of invertebrates from Carboniferous System: *Geology and Palaeontology*, Illinois Geological Survey, v. 5, p. 323–619.
- Miller, S. A., and Gurley, W. F. E., 1895, Description of new species of Paleozoic Echinodermata: *Illinois State Museum of Natural History Bulletin*, v. 6, 25 p., 4 pls.
- Miller, S.A., and Gurley, W.F.E., 1897, New species of crinoids, cephalopods, and other Palaeozoic fossils: *Illinois State Museum Bulletin*, v. 12, 69 p.
- Milne-Edwards, H., and Haime, J., 1851, Monographie des polypiers fossiles des terrains paleozoïques précédée d'un tableau général de la classification des polypes: *Muséum National d'Histoire Naturelle, Paris, Archives*, v. 5, p. 1–502.
- Muir-Wood, H.M., and Cooper, G.A., 1960, Morphology, classification and life habits of the Productoidea (Brachiopoda): *Geological Survey of America Memoir no. 81*, 447 p.
- Nestell, M.K., Nestell, G.P., Wardlaw, B.R., and Sweatt, M.J., 2006, Integrated biostratigraphy of foraminifers, radiolaria and conodonts in shallow and deep water middle Permian (Capitanian) deposits of the 'Rader slide,' Guadalupe Mountains, West Texas: *Stratigraphy*, v. 3, p. 161–194.
- Newberry, J.S., and Worthen, A.H., 1866, Descriptions of vertebrates: *Geological Survey of Illinois*, v. 2, p. 9–134.
- Niko, S., and Mapes, R.H., 2005, Early Carboniferous trigonoceratid nautilids from the Pitkin Formation of Arkansas, midcontinent North America: *Paleontological Research*, v. 9, p. 233–241, doi:10.2517/prpsj.9.233.
- Norwood, J.G., and Pratten, H., 1855a, Notice of Producti found in the western states and territories, with descriptions of twelve new species: *Journal of the Academy of Natural Sciences of Philadelphia*, v. 3, p. 23–32.
- Norwood, J.G., and Pratten, H., 1855b, Notice of fossils from the Carboniferous Series of the western states belonging to the genera *Spirifer*, *Bellerophon*, *Pleurotomaria*, *Macrocheilus*, *Natica*, and *Loxonema*, with descriptions of eight new characteristic species: *Journal of the Academy of Natural Sciences of Philadelphia*, v. 3, p. 71–77.
- Owen, D.D., 1838, Report of a Geological Reconnaissance of the State of Indiana, Made in the Year 1837: Indianapolis, Bolton and Livingston, 34 p.
- Owen, D.D., and Shumard, B.F., 1852, Descriptions of seven new species of Crinoidea from the subcarboniferous of Iowa and Illinois: *Journal of the Academy of Natural Sciences of Philadelphia*, v. 2, p. 89–94.
- Perkins, T.H., 1991, *Calcisabella piloseta*, a new genus and species of Sabellinae (Polychaeta: Sabellidae): *Bulletin of Marine Science*, v. 48, p. 261–267.
- Pratt, B.R., 1984, *Epiphyton* and *Renalcis*: Diagenetic microfossils from calcification of coccooid blue-green algae: *Journal of Sedimentary Research*, v. 54, p. 948–971.
- Pray, L.C., 1961, Geology of the Sacramento Mountains Escarpment, Otero County, New Mexico: *New Mexico Bureau of Mines and Mineral Resources Bulletin*, v. 35, 144 p.
- Raymond, D.E., Osborne, W.E., Copeland, C.W., and Neathery, T.L., 1988, Alabama Stratigraphy: *Geological Survey of Alabama Circular*, v. 140, 97 p.
- Riding, R., and Soja, C.M., 1993, Silurian calcareous algae, cyanobacteria, and microproblematica from the Alexander Terrane, Alaska: *Journal of Paleontology*, v. 67, p. 710–728.
- Rigby, J.K., and Keyes, R., 1998, *Wewokella costa* new species, a large heteroactinid calcareous sponge from the Upper Mississippian Hartselle Sandstone in northeastern Alabama: *Journal of Paleontology*, v. 72, p. 1–6.
- Rigby, J.K., Keyes Jr, R., and Horowitz, A., 1979, Two new Mississippian sponges from northeastern Alabama: *Journal of Paleontology*, v. 53, p. 709–719.
- Rindsberg, A.K., 1994, Ichnology of the Upper Mississippian Hartselle Sandstone of Alabama, with notes on other Carboniferous formations: *Alabama Geological Survey Bulletin*, v. 158, 107 p.
- Rododríguez, S., Arribas, M.E., Bermúdez-Rochas, D.D., Calvo, A., Cózar, P., Falces, S., Hernando, J.M., Mas, J.R., Moreno-Eiris, B., De la Peña, J.A., Perejón, A., Sanchez-Chico, F., and Somerville, I.D., 2007, Stratigraphical and paleontological synthesis of the Sierra del Castillo succession (Late Viséan, Córdoba, SW Spain), in Wong, T.E., ed., *Proceedings of the 15th International Congress on Carboniferous and Permian Stratigraphy*, Utrecht, The Netherlands, 10–16 August 2003: Amsterdam, Royal Academy of Sciences, p. 205–216.
- Rodríguez, S., 2004, Taphonomic alterations in upper Viséan dissepimented rugose corals from the Sierra del Castillo unit (Carboniferous, Córdoba, Spain): *Palaeogeography, Palaeoclimatology, Palaeoecology*, v. 214, p. 135–153, doi:10.1016/j.palaeo.2004.07.026.
- Rodríguez, S., and Kopaska-Merkel, D. C., 2014, Mississippian rugose corals from Alabama: A review: *Journal of Paleontology*, v. 88, p. 829–850, doi:10.1666/13-100.
- Rodríguez-Martínez, M., Mas, R. and Reitner, J., 2010, Micro-framework reconstruction from peloidal-dominated mud mounds (Viséan, SW Spain): *Facies*, v. 56, p. 139–156, doi:10.1007/s10347-009-0201-9.
- Rodríguez-Martínez, M., Moreno-González, I., Mas, R., and Reitner, J., 2012, Palaeoenvironmental reconstruction of microbial mud mound derived boulders from gravity-flow polymictic megabreccias (Viséan, SW Spain): *Sedimentary Geology*, v. 263–264, p. 157–173, doi:10.1016/j.sedgeo.2011.06.010.
- Roemer, F., 1851, Monographie der fossilen Crinoidenfamilie der Blastoiden und der Gattung *Pentatremites* im Besonderen: *Wiegmann's Archiv für Naturgeschichte*, v. 17, no. 1, p. 323–397.
- Saint John, O., and Worthen, A.H., 1875, Geology and paleontology, part II, Palaeontology of Illinois, Section 1, Descriptions of fossil fishes: *Geological Survey of Illinois*, v. 6, p. 245–488.
- Say, T., 1825, On two genera and several species of Crinoidea: *Journal of the Academy of Natural Science of Philadelphia*, ser. 1, v. 4, p. 289–296 (reprinted 1895, in *The paleontological writings of Thomas Say*: *Bulletins of American Paleontology*, v. 1, p. 347–354).
- Shen, J.-W., and Webb, G.E., 2005, Metazoan-microbial framework fabrics in a Mississippian (Carboniferous) coral-sponge-microbial reef, Monto, Queensland, Australia: *Sedimentary Geology*, v. 178, p. 113–133, doi:10.1016/j.sedgeo.2005.03.011.
- Shen, J.-W., and Webb, G.E., 2008, The role of microbes in reef-building communities of the Cannindah limestone (Mississippian), Monto region, Queensland, Australia: *Facies*, v. 54, p. 89–105, doi:10.1007/s10347-007-0116-2.
- Shen, J.-W., and Webb, G.E., 2010, Microbial mounds prior to the Frasnian-Famennian extinctions, Hantang, Guilin, South China: *Sedimentology*, v. 57, p. 1615–1639, doi:10.1111/j.1365-3091.2010.01158.x.
- Shumard, B.F., 1855, Description of new species of organic remains: *Missouri Geological Survey*, v. 2, p. 185–208.
- Sutton, A.H., 1934, Evolution of *Pterotocrinus* in the Eastern Interior Basin during the Chester epoch: *Journal of Paleontology*, v. 8, p. 393–416.
- Taylor, P.D., and Vinn, O., 2006, Convergent morphology in small spiral worm tubes ('*Spirorbis*') and its palaeoenvironmental implications: *Journal of the Geological Society, London*, v. 163, p. 225–228, doi:10.1144/0016-764905-145.

- Taylor, P.D., Vinn, O., and Wilson, M.A., 2010, Evolution of biomineralization in lophophorates: Special Papers in Palaeontology, v. 84, p. 317–333, doi:10.1111/j.1475-4983.2010.00985.x.
- Thomas, W.A., 1972, Mississippian stratigraphy of Alabama: Alabama Geological Survey Monograph, v. 12, 121 p.
- Thomas, W.A., and Mack, G.H., 2013, Paleogeographic relationship of a Mississippian barrier-island and shelf-bar system (Hartselle Sandstone) in Alabama to the Appalachian-Ouachita orogenic belt: Geological Society of America Bulletin, v. 93, p. 6–19, doi:10.1130/0016-7606(1982)93<6:PROAMB>2.0.CO;2.
- Troost, G., 1850, A list of the fossil crinoids of Tennessee: American Association for the Advancement of Science, Proceedings (1849), ser. 2, v. 8, p. 59–64 (nonsystematic, but names cited by later workers).
- Ulrich, E.O., 1890, Palaeozoic Bryozoa: Illinois Geological Survey, v. 8, p. 293–688.
- Ulrich, E.O., 1917, The formations of the Chester series in western Kentucky and their correlatives elsewhere: Kentucky Geological Survey Series, v. 5, 272 p.
- Ulrich, E.O., and Bassler, R.S., 1904, A revision of the Paleozoic Bryozoa, part 1: On genera and species of Ctenostomata: Smithsonian Miscellaneous Collection, v. 45, p. 256–294.
- Urbanek, A., 1993, Biotic crises in the history of upper Silurian graptoloids: A palaeobiological model: Historical Biology, v. 7, p. 29–55.
- Vachard, D., and Aretz, M., 2004, Biostratigraphical precisions on the early Serpukhovian (Late Mississippian), by means of a carbonate algal microflora (cyanobacteria, algae and pseudo-algae) from La Serre (Montagne Noire, France): Geobios, v. 37, p. 643–666, doi:10.1016/j.geobios.2003.05.008.
- Vachard, D., and Beckary, S., 1991, Algues et foraminifères bachkiriens des coal balls de la Mine Rosario (Truebano, Léon, Espagne): Revue de Paléobiologie, v. 10, p. 315–357.
- Vachard, D., and Krainer, K., 2001, Smaller foraminifers of the upper Carboniferous Auernig Group, Carnic Alps (Austria/Italy): Rivista Italiana di Paleontologia e Stratigrafia, v. 107, p. 147–168, doi:10.13130/2039-4942/5430.
- Vachard, D., Martini, R., Zaninetti, L., and Zambetakis-Lekkas, A., 1993, Revision micropaléontologique (Foraminifères, Algues) du Permien inférieur (Sakmarien) et supérieur (Dorashamien) du Mont Beletsi (Attique, Grèce): Bollettino della Società Paleontologica Italiana, v. 32, p. 89–112.
- Vachard, D., Hauser, M., Martini, R., Zaninetti, L., Matter, A., and Peters, T., 2001, New algae and problematica of algal affinity from the Permian of the Aseelah Unit of the Batain Plain, (East Oman): Geobios, v. 34, p. 375–404, doi:10.1016/S0016-6995(01)80003-6.
- Vachard, D., Cózar, P., Aretz, M., and Izart, A., 2016, Late Viséan–early Serpukhovian cyanobacteria and algae from the Montagne Noire (France): Taxonomy and biostratigraphy: Bulletin of Geosciences, v. 91, p. 433–466, doi:10.3140/bull.geosci.1613.
- Vinn, O., 2010, Shell structure of helically coiled microconchids from the Middle Triassic (Anisian) of Germany: Palaeontologische Zeitschrift, v. 84, p. 495–499, doi:10.1007/s12542-010-0064-7.
- Vinn, O., and Mutvei, H., 2005, Observations on the morphology and affinities of cornulitids from the Ordovician of Anticosti Island and the Silurian of Gotland: Journal of Paleontology, v. 79, p. 726–737, doi:10.1666/0022-3360(2005)079[0726:OOTMAA]2.0.CO;2.
- Vinn, O., and Wilson, M.A., 2010, Microconchid-dominated hardground association from the late Pridoli (Silurian) of Saaremaa, Estonia: Palaeontologia Electronica, v. 13, 12 p.
- Vologdin, A.G., 1932, Archaeocyaths of Siberia: Faunas from the Cambrian Limestones of Altai: Leningrad, Chief Geological Survey Directorate Press, 106 p.
- Webb, G.E., 1987, Late Mississippian thrombolite bioherms from the Pitkin Formation of northern Arkansas: Geological Society of America Bulletin, v. 99, p. 686–698.
- Webb, G.E., 1994, Non-Waulsortian Mississippian bioherms: A comparative analysis: Canadian Society of Petroleum Geologists Memoir, v. 17, p. 701–712.
- Webb, G.E., 1999, Youngest early Carboniferous (late Viséan) shallow-water patch reefs in eastern Australia (Rockhampton Group, Queensland): Combining quantitative micro- and macro-scale data: Facies, v. 41, p. 111–140.
- Webb, G.E., 2005, Quantitative analysis and paleoecology of earliest Mississippian microbial reefs, Gudman Formation, Queensland, Australia: Not just post-disaster phenomena: Journal of Sedimentary Research, v. 75, p. 875–894, doi:10.2110/jsr.2005.068.
- Weller, S., 1920, The Chester Series in Illinois: The Journal of Geology, v. 28, p. 281–303.
- Weller, S., 1926, Faunal zones in the standard Mississippian section: The Journal of Geology, v. 34, p. 320–335.
- Weller, J.M., 1936, Carboniferous trilobite genera: Journal of Paleontology, v. 10, p. 704–714.
- Wilson, J.L., 1975, The lower Carboniferous Waulsortian facies, in Wilson, J.L., Carbonate Facies in Geologic History: New York, Springer-Verlag, p. 148–168.
- Wilson, M.A., Vinn, O., and Yancey, T.E., 2010, A new microconchid tube-worm from the Artinskian (lower Permian) of central Texas, USA: Acta Palaeontologica Polonica, v. 56, p. 785–791, doi:10.4202/app.2010.0086.
- Wood, A., 1948, 'Sphaerocodium,' a misinterpreted fossil from the Wenlock Limestone: Proceedings of the Geologists' Association, v. 59, p. 9–22.
- Worthen, A.H., 1860, Notice of a new species of *Platycrinus* and other fossils from the Mountain Limestone of Illinois and Iowa: Transactions of the St. Louis Academy of Sciences, v. 1, p. 569–571.
- Worthen, A.H., 1884, Descriptions of two new species of Crustacea, fifty-one species of Mollusca, and three species of Crinoids, from the Carboniferous Formation of Illinois and adjacent states: Illinois State Museum of Natural History, Bulletin, no. 2, 27 p.
- Zhan, R., and Vinn, O., 2007, Cornulitid epibionts on brachiopod shells from the Late Ordovician (middle Ashgill) of East China: Estonian Journal of Earth Sciences, v. 56, p. 101–108.

Accepted: 11 August 2019