



Who painted that? The authorship of Schematic rock art at the Los Machos rockshelter in southern Iberia

Francisco Martínez-Sevilla^{1,2,*} , Meritxell Arqués³, Xavier Jordana³,
Assumpció Malgosa³, José Antonio Lozano Rodríguez¹, Margarita Sánchez Romero¹,
Kate Sharpe² & Javier Carrasco Rus¹

¹ Department of Prehistory and Archaeology, University of Granada, Spain

² Department of Archaeology, Durham University, UK

³ Department of Animal Biology, Plant Biology and Ecology, Autonomous University of Barcelona, Spain

* Author for correspondence: ✉ martinezsevilla@ugr.es



Globally, rock art is one of the most widely distributed manifestations of past human activity. Previous research, however, has tended to focus on the art rather than artists. Understanding which members of society participated in creating such art is crucial to interpreting its social implications and that of the sites at which it is found. This article presents the first application of a method—palaeodermatoglyphics—for the estimation of the sex and age of two later prehistoric individuals who left their fingerprints at the Los Machos rockshelter in southern Iberia. The method has the potential to illuminate the complex socio-cultural dimensions of rock art sites worldwide.

Keywords: Iberian Peninsula, Neolithic, rock art, palaeodermatoglyphics, painting techniques

Introduction

Rock art is one of the earliest and most widely distributed manifestations of human creativity in the world (Aubert *et al.* 2018; Hoffmann *et al.* 2018). Research in rock art has focused on the motifs depicted, their geographic distribution and chronology. While the question of authorship arouses intense interest amongst researchers, it is one that poses the greatest challenges for scientific investigation. Determination of the sex and age of the author (or authors) of rock art would allow to us to define the social context in which it was made with greater accuracy and to understand whether it was created as an individual act or as part of a communal event. It would also shed light on the symbolic systems used by prehistoric populations

Received: 23 July 2019; Revised: 18 November 2019; Accepted: 22 November 2019

© Antiquity Publications Ltd, 2020

(Snow 2006; Wang *et al.* 2010). Previous analyses of rock art authorship have focused primarily on Upper Palaeolithic hand stencils (for a comprehensive overview, see Nelson *et al.* 2017). These studies have used a variety of techniques to measure the hand stencils and compare them with both modern populations and ethnographic evidence, making it possible to determine the sex of the authors of the handprints at prehistoric sites in Europe, Asia, Australia and North America. This research indicates, for the first time, that both sexes, including adults and sub-adults, participated in this activity, challenging popular assumptions of male authorship that have not previously been addressed scientifically. The authorship of other styles and chronologies of rock art, however, remains unresolved due to a lack of reliable diagnostic traits. A powerful new methodology is now set to address this issue and to transform our understanding.

Palaeodermatoglyphs are fingerprints found in archaeological contexts. These ancient impressions may be left accidentally or voluntarily by their author, and are found on a variety of materials, including on fired clay surfaces such as that of the Upper Palaeolithic Venus of Dolní Vestonice in Moravia (Czechia; Králík & Novotný 2003) and on pottery sherds such as from Bronze Age Catalonia or among the Pueblo people of the American Southwest (Míguez *et al.* 2016; Kantner *et al.* 2019). Ancient fingerprints, however, tend to be partial, and it is often impossible to identify the specific area of the finger used to make the print (Králík & Novotný 2003; Králík *et al.* 2003; Králík & Nejman 2007; Míguez *et al.* 2016). Very occasionally, palaeodermatoglyphs have allowed researchers to determine both the sex and the age of their authors by analysis of the ridges present. Sexual dimorphism may be reflected in the number of ridges present (Acree 1999; Nayak *et al.* 2010; Gutiérrez-Redomero *et al.* 2011; Eshak *et al.* 2013; Gutiérrez-Redomero & Alonso-Rodríguez 2013; Krishan *et al.* 2013; Rivaldería *et al.* 2016), and it appears that males have broader ridges than females (Gutiérrez-Redomero *et al.* 2008; Mundorff *et al.* 2014; Míguez *et al.* 2016). Differences between adults and sub-adults have also been documented across different populations. Although fingerprint patterns do not change during an individual's lifetime, the distance between the ridges increases during growth, becoming permanent in adulthood. Some research even suggests that there is a standard interval between ridges at certain ages (David 1981; Kamp *et al.* 1999).

In the Los Machos rockshelter in Zújar-Granada in southern Spain, we have identified two fingerprints, representing exceptional, uniquely personal traces left by the author(s) of paintings associated with a panel of Western Mediterranean Schematic art. The 'Schematic' style is one of the three rock art categories defined in the later prehistoric Iberian Peninsula, the others being 'Levantine' and 'Macro-Schematic'. These styles are crucial to our understanding of late prehistory and the process of Neolithisation in Iberia (Cruz & Vicent 2007; Rojo-Guerra *et al.* 2018). While Schematic art appears across the whole of Iberia (Acosta 1968; Martínez García 2006), it predominates in the south, particularly in the Betic Cordillera. Rockshelters with Schematic art are often found in mountainous environments, especially along the natural corridors that connect basins and valleys with mountain pastures, or may be associated with striking natural topography or features (e.g. Fernández *et al.* 2017; Morgado *et al.* 2018; Rogerio-Candelera *et al.* 2018), as at Los Machos. These sites provide unique insights into the populations inhabiting each region.

The post-Palaeolithic rock art chronology of the Iberian Peninsula is the subject of current debates focusing on the challenges of applying direct, absolute dating techniques. The dating

of Schematic art in the eastern mountain ranges of Cuenca and Cataluña suggests a long tradition ranging from *c.* 4500–2000 BC (Ruiz-López *et al.* 2009, 2012), which corresponds to the Early to Late Neolithic periods. In the south of Iberia, shelters containing Schematic rock art dated by absolute methods show similar chronologies (Morgado *et al.* 2018; Rogerio-Candelera *et al.* 2018). Likewise, absolute dates from paintings associated with megalithic monuments in both north-eastern and southern Iberia have a comparable chronological range (Steelman *et al.* 2005; Bueno Ramírez *et al.* 2013). Moreover, analyses of Neolithic pottery decoration advanced the chronological contextualisation of Schematic art in the Iberian Peninsula (e.g. Carrasco Rus *et al.* 2006, 2015; Rojo-Guerra *et al.* 2018). Currently, it is assumed that Schematic art first appeared in the Early Neolithic and persisted throughout the Late Neolithic and Copper Age (fourth and third millennia BC) (e.g. Escoriza Mateu 2002; Carrasco Rus *et al.* 2006, 2015; Cruz & Vicent-García 2007; Fernández Martín *et al.* 2017; Rojo-Guerra *et al.* 2018).

In this article, we investigate the biological profile of the author(s) of the Los Machos paintings by analysing the breadth of the ridges present on fingerprints on its rock art panel. In addition, we investigate the painting technique using high-resolution photography and statistical analysis of stroke width.

The shelter: geological and archaeological context

Los Machos shelter is located on the eastern slope of the Cerro de Jabalcón Mountain (37°34'14.82" north, 2°48'23.09" west), at an elevation of 1335m asl (Figure 1). The shelter, discovered during fieldwork carried out between 2004 and 2005, has an east-facing opening within an almost vertical limestone wall of around 100m in height, offering extensive views across the Baza Basin. This area is formed from Triassic and Lower Jurassic limestones and dolomites topped by Middle and Upper Jurassic flint-bearing limestone (Figure 1A–B). The shelter is shallow and open, measures 13m across the exterior part and is 4m deep. The roof is formed by a reverse fault plane with a 28° dip towards the north-west, with zones of fault mirror or slickenside (the smooth, polished surface caused by friction along two sides of a fault) and fault gap (Figure 2D). The rock art panel is located in the deepest part of the shelter, on the upper area of the wall (Figure 2B). The motifs are predominantly on the fault mirror or slickenside, as has been documented in other Schematic rock art panels (e.g. at Cerro del Castillejo in the Sierra Nevada: Fernández Martín *et al.* 2017). Being oriented towards the east, and given that the prevailing wind and rain come from the west, the shelter has been subject to neither wind erosion nor carbonate dissolution by rain. As the wall also exhibits no large areas of carbonate precipitation, the panel is probably almost completely preserved (Figure 2E–F).

Los Machos shelter is sited in a prominent location in relation to the wider Baza Basin (Figure 1). Evidence of prehistoric activity in this area is scarce and limited to surface surveys. Nineteen archaeological sites have been recorded in the 10km radius surrounding Los Machos; they date, on the basis of the material found there, to the Neolithic and Bronze Age (Caballero Cobos 2014: 187). Although they cannot be categorically linked to the Los Machos art, they indicate that the area must have seen significant late prehistoric occupation.

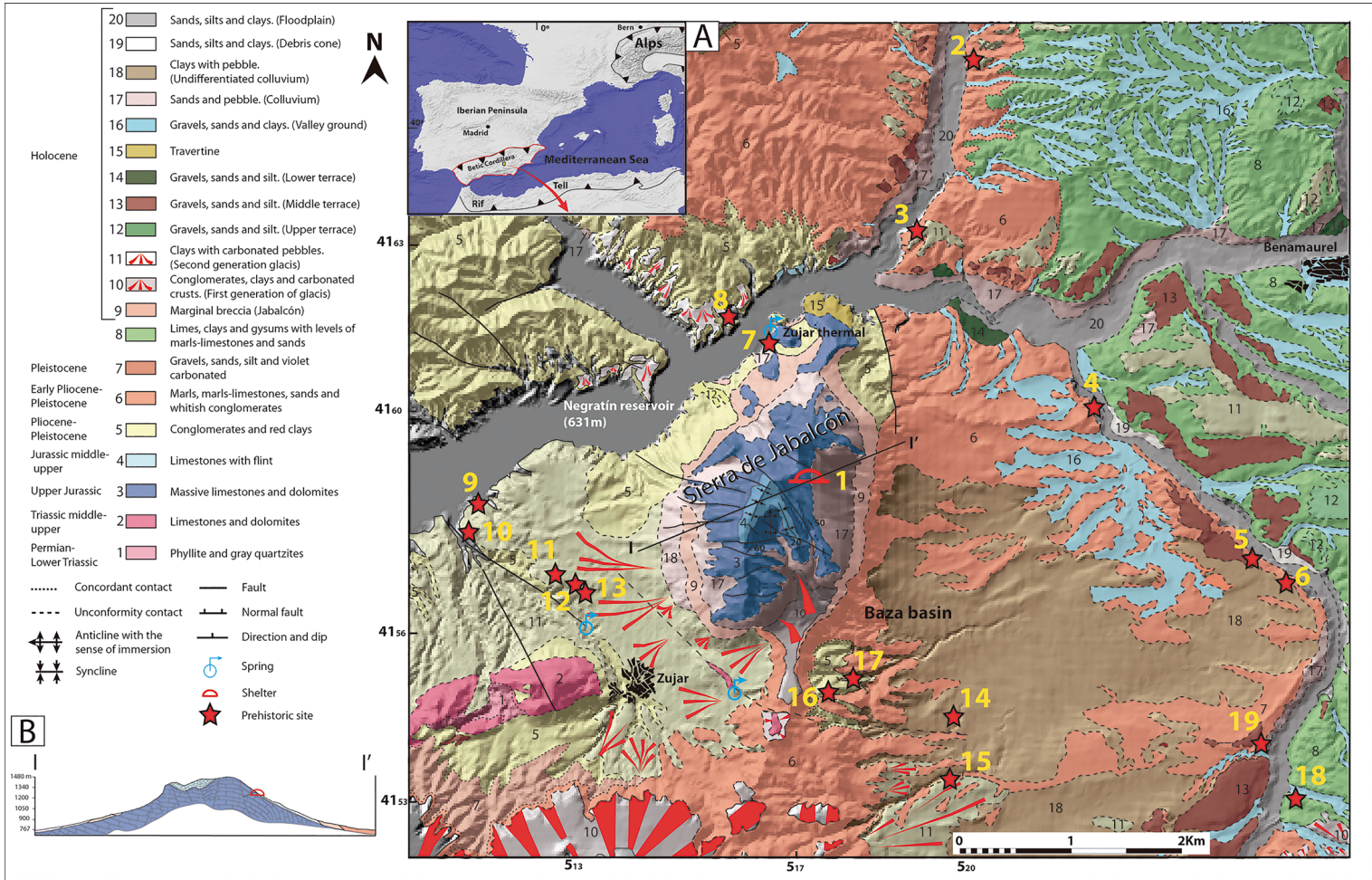


Figure 1. A) Geological map showing prehistoric sites in the area surrounding the Los Machos rockshelter (1); 2) Cañada de la Torre 1; 3) Los Términos; 4) Bastida 1; 5) Cortijo Vallejo 3; 6) Cortijo Vallejo 1; 7) Puntal de la Granja; 8) Rambla de la Higuera 1; 9) Loma Vieja; 10) Rambla Esparteros 2; 11) Barranco del Tío Melón 2; 12) Barranco del Tío Melón 1; 13) Barranco del Tío Melón 3; 14) Cerro del Hambre; 15) Cerro Montesinos; 16) Cejo de Catín; 17) Cueva de Gil; 18) Cerro del Huerto 1–2; 19) Venta Madama (Caballero 2014); B) cross section through the Sierra de Jabalcón (I–I' on map) (figure by J.A. Lozano Rodríguez).

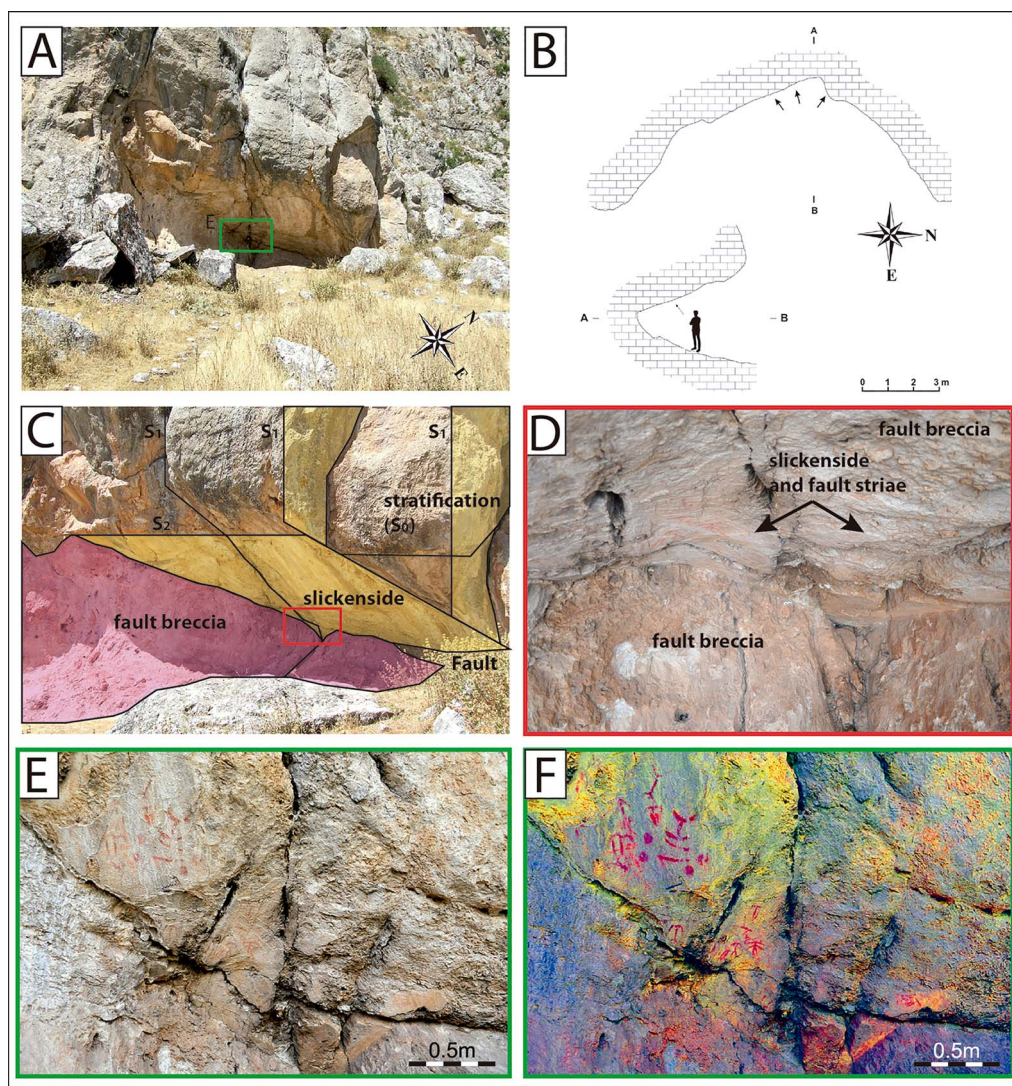


Figure 2. A) Front view of Los Machos rockshelter; B) plan and section (arrows indicate the position of the rock art panel); C) geological stratification S_0 , fracture S_1 and dip fault with fault breccia; D) slickenside and fault striae on which most of the motifs are located; E) rock art panel without computer processing; and F) panel processed with ImageJ® software (figure by J.A. Lozano Rodríguez & F. Martínez-Sevilla).

Methodology

Our study of the Los Machos rock art panel involved several techniques. Digital tracings of the panel were produced (using Adobe Photoshop®) from photographs taken with a Nikon® D5000 camera and NIKKOR AF-S DX 18–55 mm VR lens, and details were recorded with a Canon® EOS 1200D with an EF 100mm $f/2.8$ USM macro lens. The images were processed using the D-Stretch® plug-in for ImageJ® to emphasise otherwise imperceptible details in the originals.

Table 1. Measurement of modern adult fingerprints (18–65 years) according to the 50th percentile of DIN 33 402 part 2 (Jürgens 2004).

Little finger (mm)		Ring finger (mm)		Middle finger (mm)		Index finger (mm)	
Male	Female	Male	Female	Male	Female	Male	Female
15	13	16	16	17	17	18	16

The techniques used for painting the panel were examined by two methods. First, traces left on the limestone wall were analysed using the detailed photographs and digitally enhanced images; second, stroke width was analysed statistically. The latter was carried out for motifs exhibiting regular and defined strokes. Between four and ten measurements were taken for each motif, depending on their state of preservation. The mean widths of the strokes were compared with the 50th percentile of fingertip median of adults (18–65 years), according to the German industry standard DIN 33 402 Part 2 (Jürgens 2004) (Table 1).

The sex and age of the author(s) were determined for two fingerprints found on two different motifs. Fingerprint 1 (Figure 3A: 5), which possibly corresponds to an accidental imprint (Figure 3B), is a single print next to an anthropomorphic motif (Figure 3A: 4). Fingerprint 2 is associated with a set of indeterminate lines (Figure 3A: 22; Figure 3C). The epidermal ridge breadth, defined as the distance from the edge of the shadow of one ridge to the edge of the shadow of the next (Králik & Novotný 2003), was measured for both fingerprints. To obtain an accurate measurement, we used the average of ten ridges, or those that were available. To achieve this, we drew a transverse line from the edge of the first ridge to the edge of the tenth ridge. This line allows for calculation of the average value of ridges per millimetre (Králik & Novotný 2003; Arqués Planas 2017). For each fingerprint, three measures in different regions were obtained and averaged (Figure 4).

To determine the age and sex of the people to whom the Los Machos fingerprints belonged, we used the threshold values and regression formulae established by García (2018). These were obtained from the analysis of 546 fingerprints from the index finger of the right hand of modern Spanish juvenile and adult individuals (304 females and 242 males). The ridge-breadth measurements were taken using the same method described here. The threshold values of the ridge-breadth measurements for age and sex classification were calculated using the receiver operating characteristic curve analysis, a statistical technique based on the sensitivity and the specificity of the test being carried out (García 2018). The sensitivity refers to the accuracy of allocation to a group using a threshold value; for example, the number of cases from group 'A' that are correctly classified as 'A'. The specificity is the number of cases from group 'B' that are correctly identified using the same threshold value. The '1-specificity' is the proportion of cases of group 'B' that are classified as 'A'. García (2018) presents different threshold values of ridge breadth for three age groups (juveniles, adults ≤ 35 years, and adults >35 years) and, within each adult age group, for both sexes. For our work, we used the threshold values of ridge breadth showing the highest sensitivity and lowest '1-specificity' (Table 2). In addition, the regression formula for age determination in juveniles (García 2018) was also used ([age in years = $-18.68 + 77.59 \times \text{ridge breadth}$]; SEE = 3065 years; $R^2 = 0.366$; $p < 0.001$).

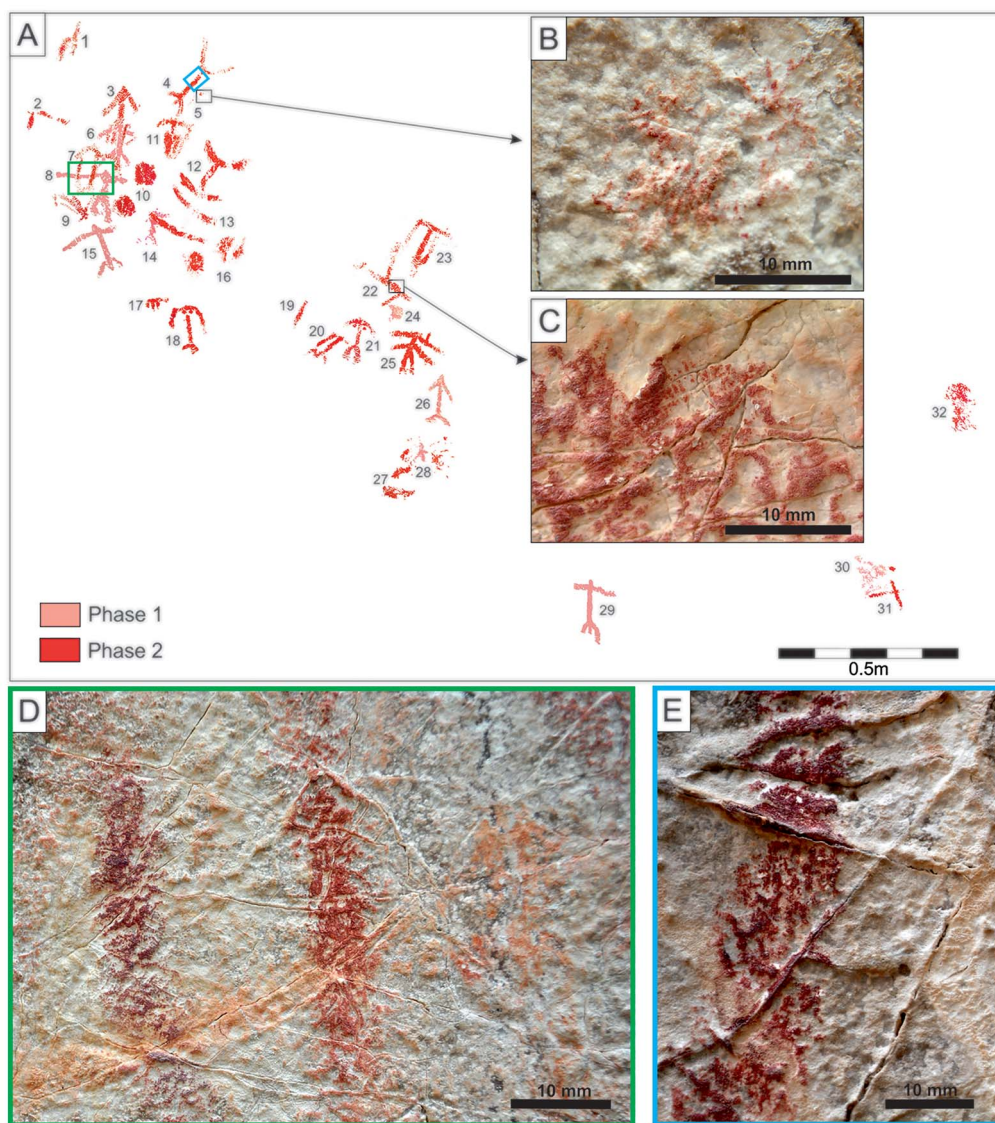


Figure 3. A) Digital tracings of the Los Machos rockshelter art panel (for a description of the motifs, see Table 3); B) fingerprint 1; C) fingerprint 2; D) detail of superimposition between two figures of phase 2 (darker ochre) over phase 1 (dull ochre); E) detail of the digital tracing technique used in the paintings. Note the accumulation of pigments in the irregularities of the limestone (figure by F. Martínez-Sevilla).

Results: motif analysis, technique and authorship

We were able to identify 32 painted motifs at Los Machos (Table 3). Superimposition of the figures and the different pigment colours indicate the presence of two phases of painting that could represent two distinct chronological episodes. The most recent addition (phase 2) is a dark ochre pigment, while the older paint (phase 1) has a lighter colour (Figure 3D). Phase

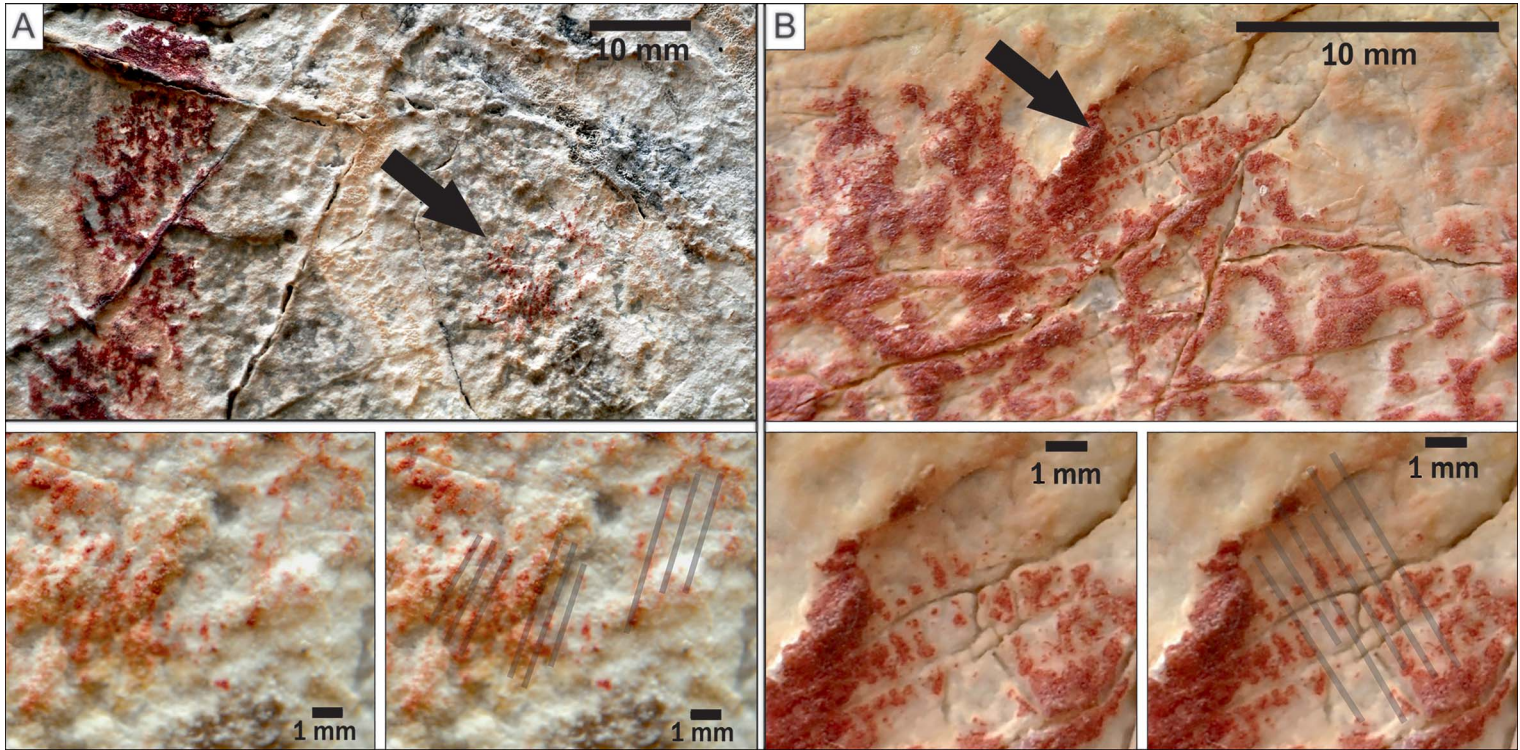


Figure 4. Palaeodermatoglyphs identified and analysed: A) fingerprint 1; B) fingerprint 2. The grey lines enable better detection of the fingerprint ridges (figure by M. Arqués, X. Jordana & A. Malgosa).

Table 2. Threshold values of ridge breadth (mm) for age and sex determination taken from García (2018).

Ridge breadth threshold	1-specificity	Sensitivity	Age and sex classification	Accuracy of classification (%)
≥0.42	0.29	0.69	>20 yrs	70
≥0.43	0.30	0.56	≤35; male	64
≥0.44	0.29	0.84	>35 yrs	72
≥0.47	0.11	0.64	>35 yrs	85
≥0.49	0.21	0.63	>35 yrs; male	72

1 comprises ten motifs: seven anthropomorphic figures, five complete and two partial representations, two indeterminate strokes and a circular motif (Figure 3A). Phase 2 comprises 22 motifs: 11 anthropomorphic figures, nine complete and two partial, eight indeterminate strokes and three geometric motifs (Figure 5). Fingerprints 1–2 both belong to the second phase.

The number of each type of figure represented is similar in both phases (Figure 6). The dimensions of complete figures are also comparable in both phases, with sizes varying widely according to the type of motif (Figure 7). Figures include male and female representations exhibiting clear sexual attributes: breasts (Figure 3A: 18 & 21) and penises (Figure 3A: 4, 6, 15 & 29); other figures have no obvious sexual attributes (Figure 3A: 12, 25 & 26).

The motifs were made using continuous vertical strokes drawn from top to bottom, as indicated by pigment accumulations in the wall's irregular surface (Figure 3E). We compared the stroke thicknesses in the best-preserved motifs with the standard dimensions of modern adult fingers (Table 1). The maximum standard deviation of the painted strokes was ±2.9mm. This could be due to several factors that affect the stroke thickness, such as finger size, strength used in pigment application, pigment quantity and consistency, wall surface irregularities and preservation. Despite these factors, the strokes' mean and the anatomical finger medians show a correlation of between 13 and 18mm (Figure 8). Given the variables that affect it, this method does not allow us to attribute strokes to a specific finger, or to determine the sex of the author. The method does, however, confirm that the motifs were finger-painted.

The dimensions of fingerprint 1 are 7.92 × 12.55mm (Figure 4A), and 3.47 × 2.46mm (Figure 4B) for fingerprint 2. It was possible to identify 12–14 and 6 ridge lines respectively, although some lines were difficult to define. Ridge breadth was calculated only on the well-defined lines (Table 4). According to García (2018), a mean ridge breadth of 0.47 or greater indicates an age of 36 years or older (at 85 per cent accuracy). Additionally, a value >0.49 corresponds to males (at 72 per cent accuracy). The ridges of fingerprint 1 have a mean ridge breadth of 0.54mm, suggesting that the fingerprint belongs to an adult male at least 36 years of age. The ridges of fingerprint 2 have a mean ridge breadth of 0.41mm. According to García (2018), a mean ridge breadth of under 0.44 indicates an age of 35 or younger (at 71.9 per cent accuracy); a mean ridge breadth below 0.43 would represent a female (at 64 per cent accuracy). A mean ridge-breadth value of under 0.42 gives a 70 per cent probability that the individual is younger than 20 years. Thus, we also used the regression equation to determine age from mean ridge breadth, constructed for individuals under 20 for both sexes (García 2018). The result shows that fingerprint 2 could have been produced by an individual aged 13±3 years.

Table 3. Description of motifs identified in the Los Machos rock art panel (No. represent the numbering in Figure 3A).

No.	Painting phase	Type	Length (mm)	Width (mm)	Stroke thickness (mm)	
					$\bar{X} \pm SD$	M_e
1	1	Lower extremities of anthropomorph	149	57	13.9 ± 1.7	13.6
2	2	Indefinite strokes	71	126	15.4 ± 0.7	15.4
3	2	Anthropomorphic	173	124	16 \pm 2.2	15.7
4	2	Anthropomorphic	207	156	13 \pm 1.2	12.8
5	2	Indefinite strokes (fingerprint 1)	53	10	–	–
6	1	Anthropomorphic	138	121	13.4 ± 1.7	12.7
7	2	Anthropomorphic	168	142	14.7 ± 1.9	14.6
8	1	Anthropomorphic	150	213	14.9 ± 2.7	16
9	2	Indefinite strokes	131	51	–	–
10	2	Circular geometric	176	57	–	–
11	2	Triangular geometric (dagger?)	111	102	–	–
12	2	Anthropomorphic	175	149	18.9 ± 0.9	19.1
13	2	Anthropomorphic	125	181	18.9 ± 2.8	19.3
14	1	Indefinite strokes	94	37	–	–
15	1	Anthropomorphic	145	172	17.3 ± 1.8	17.1
16	2	Circular geometric	173	56	–	–
17	2	Top of anthropomorph	63	32	–	–
18	2	Anthropomorphic	135	99	13.8 ± 1.7	14.2
19	2	Indefinite strokes	76	14	16.7 ± 1.2	16.5
20	2	Lower extremities of an anthropomorph	97	48	13.3 ± 1.7	13.3
21	2	Anthropomorphic	125	84	11.8 ± 1.2	11.2
22	2	Indefinite strokes (fingerprint 2)	173	153	14.8 ± 2.9	15.3
23	2	Anthropomorphic	122	96	15.7 ± 2.6	15
24	1	Circular geometric	56	40	–	–
25	2	Anthropomorphic	130	137	14.5 ± 2.4	15.2

(Continued)

Table 3. (Continued)

Description of motifs identified in the Los Machos rock art panel (No. represent the numbering in Figure 3A).

No.	Painting phase	Type	Length (mm)	Width (mm)	Stroke thickness (mm)	
					$\bar{X} \pm SD$	M_e
26	1	Anthropomorphic	146	67	13.1 ± 2.7	12.5
27	2	Indefinite strokes	96	48	–	–
28	1	Top of an anthropomorph	35	39	11.6 ± 2.3	11
29	1	Anthropomorphic	170	115	14 \pm 1.8	13.8
30	1	Indefinite strokes	196	94	–	–
31	2	Indefinite strokes	109	93	10.8 \pm 1	11.3
32	2	Indefinite strokes	78	59	–	–

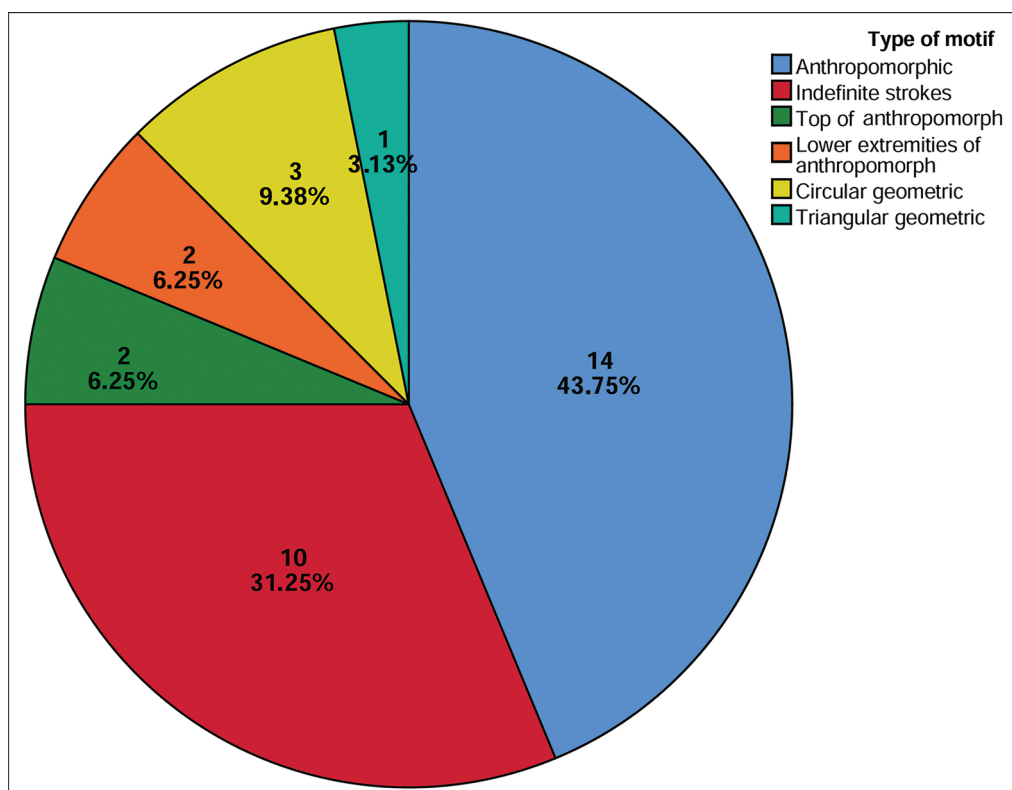


Figure 5. Numerical and percentage representation of different motif types in both painting phases (figure by F. Martínez-Sevilla).

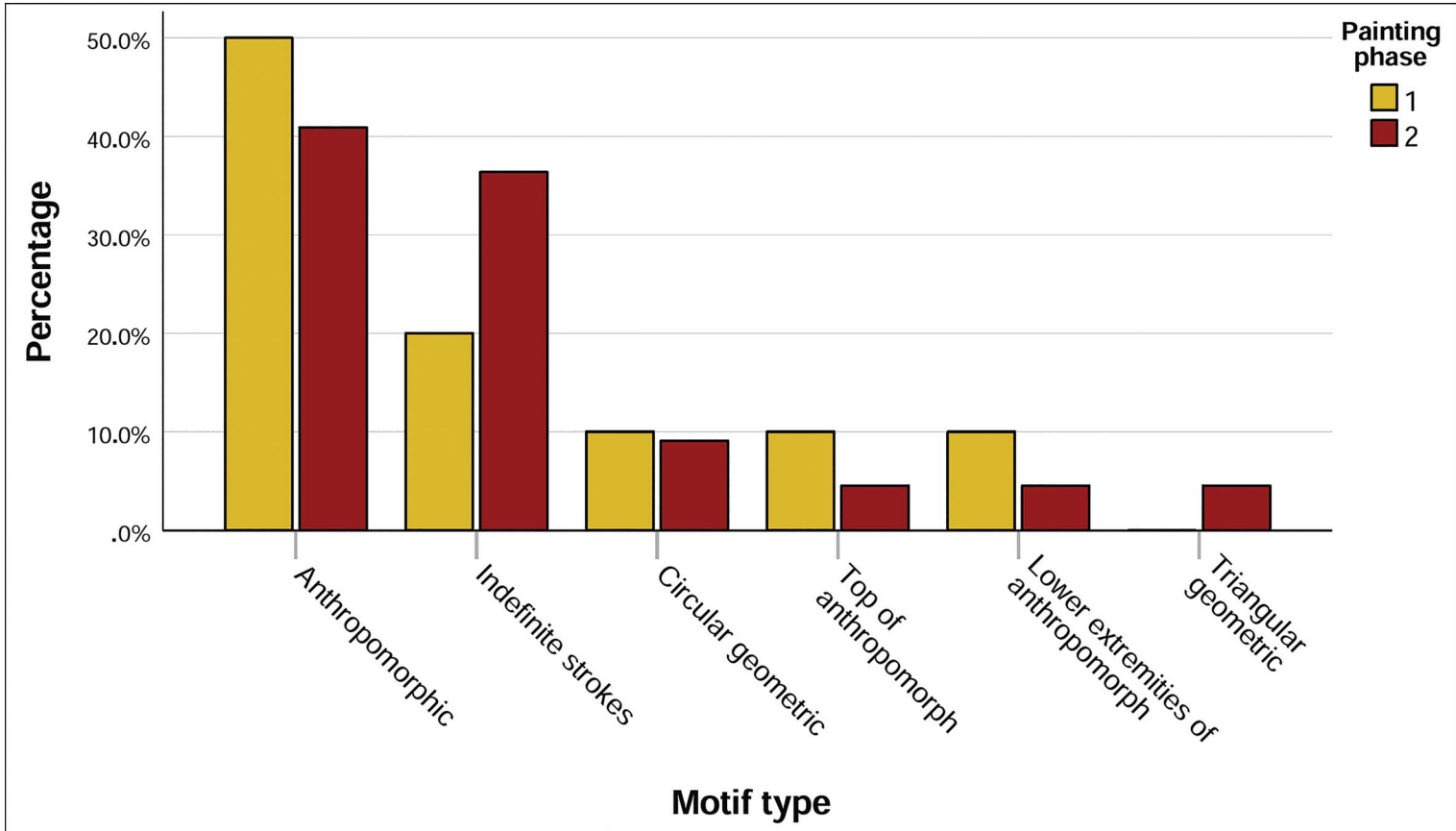


Figure 6. Percentage of motifs according to the two defined painting phases (figure by F. Martínez-Sevilla).

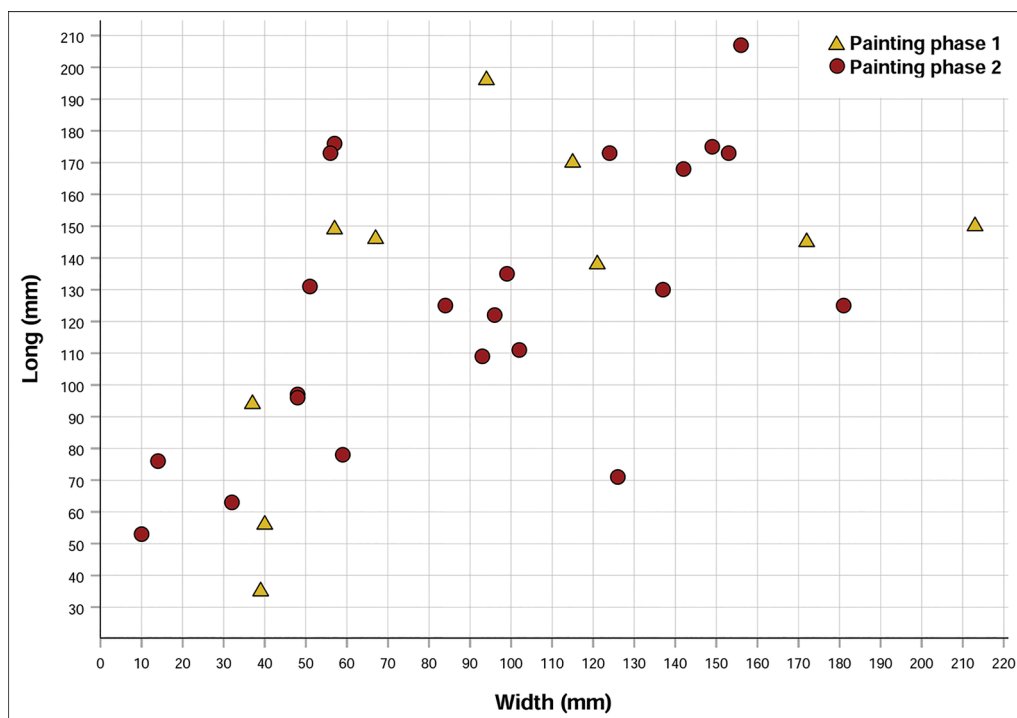


Figure 7. Comparison of dimensions according to the two defined painting phases (figure by F. Martínez-Sevilla).

Table 4. Mean breadth ridge (mm) for the two groups of dermatoglyphs from the Los Machos rock art panel.

Fingerprints	No. of lines analysed	Measure 1	No. of lines analysed	Measure 2	No. of lines analysed	Measure 3	Average
1	9	0.52	9	0.54	9	0.56	0.54±0.02
2	6	0.42	6	0.43	5	0.39	0.41±0.02

In summary, the mean ridge-breadth values indicate that the fingerprints were produced by two different individuals: an adult male over 36 years of age, and possibly a young adult female or, more probably, a juvenile individual.

Discussion

A large quantity of data has been amassed from rock art sites around the world. Researchers now have access to detailed information concerning the repertoire of motifs, the styles and techniques employed in their creation, and, more recently, the chronologies of artistic

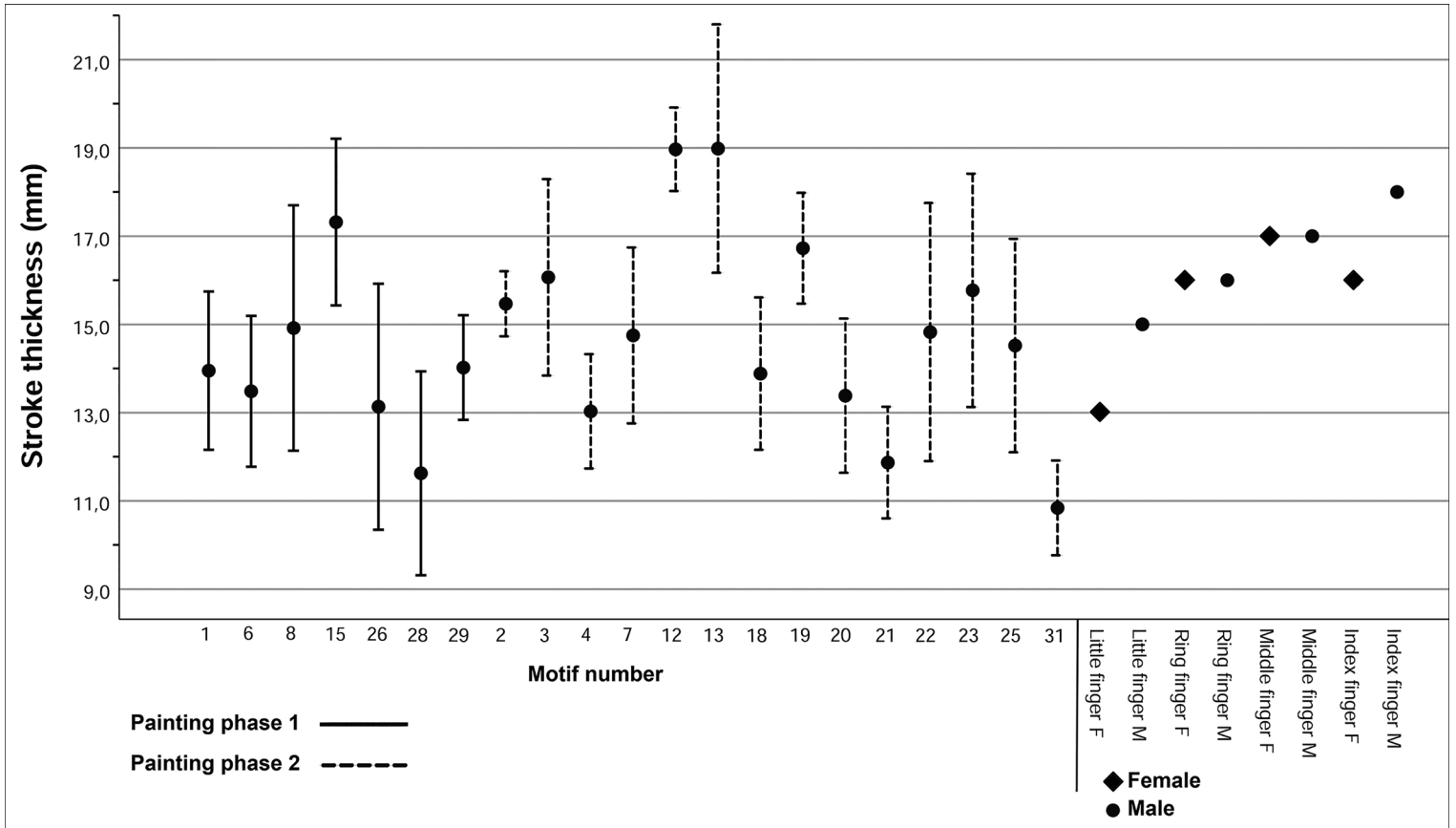


Figure 8. Error bars graphic of motif stroke width and comparison with the measurements of modern adult fingerprints (18–65 years) according to the 50th percentile of DIN 33 402 Part 2 (Jürgens 2004; figure by F. Martínez-Sevilla).

episodes and the compositions of pigments used (e.g. Hunt *et al.* 2016; Lycett & Keyser 2017; Riemer *et al.* 2017). Yet the true value of rock art lies in how it represents a direct expression of the thought processes of the people who created it. These individuals are very often missing from discussions of rock art sites, despite efforts to reconstruct the processes and performances surrounding the creation of such art (e.g. Jones 2012; Díaz-Andreu & Matioli 2017; Nash & Troncoso 2017). Ethnographic analogies provide valuable insights into a wide spectrum of human artistic engagement and expressions, and the motivations and beliefs of art-producing communities (for a comprehensive overview, see Blundell *et al.* 2016). But they cannot reveal the identities of the prehistoric creators of the motifs—the individuals who collected pigments, made paint and applied it to the surfaces of sites such as the Los Machos shelter. It is *their* thoughts and *their* personal perspectives and physical engagements with the world that archaeologists seek to understand.

One tangible link to those who made the representations is provided by the corpus of Palaeolithic hand stencils and ‘finger-fluting’ impressions. Walker *et al.* (2018) highlight the unique properties of the human hand that make it a universally recognisable image that transcends cultural divisions. Hand stencils and finger flutings are also permanent records of the moment of direct physical contact between artist and ‘canvas’, offering clues to the identity and physical presence of the authors, such as age and sex, right- or left-handedness, and missing or bent fingers (e.g. Sahly 1966; Rouillon 2006; Sharpe & van Gelder 2006; Pettitt *et al.* 2014). We have shown here that the Los Machos fingerprints provide a similar, albeit more limited, opportunity to reveal aspects of the identity of the people who made them.

Our analyses have also revealed elements of the artistic process. Collective participation is present at two levels: multiple authors contributed to the painting process, and the paintings portray numerous figures of both sexes, points that have also been suggested for Levantine rock art (Escoriza Mateu 2002). These actions probably relate to daily life, and are the materialisation of symbolic elements understood by the communities that inhabited the area around Los Machos in the sixth to third millennia BC. This collective, social participation in the creation of Schematic rock art is similar to that previously observed for other Palaeolithic rock art traditions of the Iberian Peninsula, where artistic creation is also shared by different individuals (e.g. Pettitt *et al.* 2014; Rabazo-Rodríguez *et al.* 2017).

Conclusions

This article presents the first application of the study of palaeodermatoglyphs to prehistoric Schematic rock art, illustrating the potential value of the technique to rock art studies. Observations relating to pigment and superimposition indicate two painting phases at Los Machos, with two identified fingerprints belonging to its second, most recent phase. Analysis of stroke width has allowed us to confirm that the pigment was applied by finger painting. By measuring the fingerprints’ mean ridge breadth, we have been able to estimate the sex and age of two individuals: an adult male and a young adult female or juvenile, who took part in the creation of the Los Machos Schematic art, which itself represents both sexes. The ability to identify individuals potentially allows new inferences to be made about the site and the

people that created its art. The research into authorship, using the methodology applied here, could reveal further complex social dimensions at other rock art sites worldwide.

Acknowledgements

This article was developed as part of the project 'Iberismo y romanización en el área nuclear bastetana' directed by Andrés M. Adroher Auroux, who allowed us to study the Los Machos rockshelter. This work was funded by a postdoctoral research grant from the University of Granada (Plan Propio de Perfeccionamiento de Doctores) and the project AGAUR of Generalitat de Catalunya (2017-SGR-1630); analyses were carried out in the Department of Archaeology, Durham University. Our thanks also go to the anonymous reviewers for their insightful comments.

References

- ACOSTA, P. 1968. *La pintura esquemática en España*. Salamanca: Universidad de Salamanca.
- ACREE, M.A. 1999. Is there a gender difference in fingerprint ridge density? *Forensic Science International* 102: 35–44.
[https://doi.org/10.1016/S0379-0738\(99\)00037-7](https://doi.org/10.1016/S0379-0738(99)00037-7)
- ARQUÉS PLANAS, M. 2017. The use of fingerprints in physical anthropology. Unpublished MA dissertation, Universitat Autònoma de Barcelona.
- AUBERT, M. *et al.* 2018. Palaeolithic cave art in Borneo. *Nature* 564: 254–57.
<https://doi.org/10.1038/s41586-018-0679-9>
- BLUNDELL, G., C. CHIPPINDALE & B. SMITH. 2016. *Seeing and knowing: understanding rock art with and without ethnography*. Oxford: Routledge.
- BUENO RAMÍREZ, P., R. BALBÍN BEHRMANN & R. BARROSO. 2013. Símbolos para los vivos, símbolos para los muertos: arte megalítico en Andalucía, in J. Martínez García & M.S. Hernández Pérez (ed.) *Actas del II Congreso de Los Vélez (Vélez 2010)*: 25–47. Vélez-Blanco: Ayuntamiento de Vélez-Blanco.
- CABALLERO COBOS, A. 2014. Vías de comunicación en las comarcas de Baza y Huéscar: una aproximación histórico-arqueológica desde la Prehistoria Reciente a la Edad Media. Unpublished PhD dissertation, Universidad de Granada. Available at: <http://hdl.handle.net/10481/38469> (accessed 25 June 2020).
- CARRASCO RUS, J., M.S. NAVARRETE ENCISO & J.A. PACHÓN ROMERO. 2006. Las manifestaciones rupestres esquemáticas y los soportes muebles en Andalucía, in J. Martínez & M. Hernández (ed.) *Actas del Congreso de Arte Rupestre Esquemático en la Península Ibérica: Comarca de Los Vélez, 5–7 de Mayo 2004*: 85–119. Vélez-Blanco: Ayuntamiento de Vélez-Blanco.
- CARRASCO RUS, J., F. MARTÍNEZ-SEVILLA, J.A. PACHÓN ROMERO & J. GÁMIZ. 2015. Nuevas aportaciones para el conocimiento del arte rupestre esquemático y los soportes muebles en la cuenca alta del Guadalquivir: las pinturas del Cerro de Jabalcón (Zújar, Granada) y sus relaciones con las de Tajo de Lillo (Loja, Granada). *Antiquitas* 27: 7–29.
- CRUZ-BERROCAL, M. & J.M. VICENT-GARCÍA. 2007. Rock art as an archaeological and social indicator: the Neolithization of the Iberian Peninsula. *Journal of Anthropological Archaeology* 26: 676–97. <https://doi.org/10.1016/j.jaa.2007.02.003>
- DAVID, T. 1981. Distribution, age and sex variation of the mean epidermal ridge breadth. *Human Heredity* 31: 279–82.
<https://doi.org/10.1159/000153222>
- DÍAZ-ANDREU, M. & T. MATIOLI. 2017. Rock art and prehistoric soundscapes: some results from Italy, France, and Spain. *Journal of the Acoustical Society of America* 141: 3999.
<http://doi.org/10.1121/1.4989166>
- ESCORIZA MATEU, T. 2002. Representations of women in Spanish Levantine rock art: an intentional fragmentation. *Journal of Social Archaeology* 2: 81–108.
<https://doi.org/10.1177/1469605302002001598>
- ESHAK, G.A., J.F. ZAHER, E.I. HASAN & A.A.E.A. EWIS. 2013. Sex identification from fingerprint features in Egyptian population.

- Journal of Forensic and Legal Medicine* 20: 46–50.
<https://doi.org/10.1016/j.jflm.2012.04.038>
- FERNÁNDEZ MARTÍN, S., F. MARTÍNEZ-SEVILLA & J.A. LOZANO RODRÍGUEZ. 2017. Primer hallazgo de arte rupestre en la cabecera del valle del Genil, Sierra Nevada: las pinturas del Cerro del Castillejo (Güejar Sierra, Granada). *Antiquitas* 29: 7–16.
- GARCÍA, C. 2018. Estimation of age and sex from epidermal ridge breadth. Unpublished MA dissertation, Universitat Autònoma de Barcelona.
- GUTIERREZ-REDOMERO, E. & C. ALONSO-RODRIGUEZ. 2013. Sexual and topological differences in palmprint and ridge density in the Caucasian Spanish population. *Forensic Science International* 229: 159.e1–159.e10.
<https://doi.org/10.1016/j.forsciint.2013.03.014>
- GUTIÉRREZ-REDOMERO, E., C. ALONSO, E. ROMERO & V. GALERA. 2008. Variability of fingerprint ridge density in a sample of Spanish Caucasians and its application to sex determination. *Forensic Science International* 180: 17–22.
<https://doi.org/10.1016/j.forsciint.2008.06.014>
- GUTIÉRREZ-REDOMERO, E., C. ALONSO-RODRÍGUEZ, L.E. HERNÁNDEZ-HURTADO & J.L. RODRÍGUEZ-VILLALBA. 2011. Distribution of the minutiae in the fingerprints of a sample of the Spanish population. *Forensic Science International* 208: 79–90.
<https://doi.org/10.1016/j.forsciint.2010.11.006>
- HOFMANN, D.L. *et al.* 2018. U-Th dating of carbonate crusts reveals Neandertal origin of Iberian cave art. *Science* 359: 912–15.
<https://doi.org/10.1126/science.aap7778>
- HUNT, A., P. THOMAS, D. JAMES, B. DAVID, J.M. GENESTE, J.J. DELANNOY & B. STUART. 2016. The characterisation of pigments used in X-ray rock art at Dalakngalarr 1, central-western Arnhem Land. *Microchemical Journal* 126: 524–29. <https://doi.org/10.1016/j.microc.2016.01.016>
- JONES, A.M. 2012. Living rocks: animacy, performance and the rock art of the Kilmartin region, Argyll, Scotland, in A. Cochrane & A.M. Jones (ed.) *Visualising the Neolithic: abstraction, figuration, performance, representation* (Neolithic Studies Group Seminar Papers 13): 79–88. Oxford: Oxbow.
- JÜRGENS, H.W. 2004. *Erhebung anthropometrischer Maße zur Aktualisierung der DIN 33 402: Teil 2*. Dortmund: Bundesanstalt für Arbeitsschutz und Arbeitsmedizin.
- KAMP, K.A., N. TIMMERMAN, G. LIND, J. GRAYBILL & I. NATOWSKY. 1999. Discovering childhood: using fingerprints to find children in the archaeological record. *American Antiquity* 64: 309–15. <https://doi.org/10.2307/2694281>
- KANTNER, J., D. MCKINNEY, M. PIERSON & S. WESTER. 2019. Reconstructing sexual divisions of labor from fingerprints on Ancestral Puebloan pottery. *Proceedings of the National Academy of Sciences of the USA* 116: 12220–25.
<https://doi.org/10.1073/pnas.1901367116>
- KRÁLÍK, M. & L. NEJMAN. 2007. Fingerprints on artifacts and historical items: examples and comments. *Journal of Ancient Fingerprints* 1: 4–13.
- KRÁLÍK, M. & V. NOVOTNÝ. 2003. Epidermal ridge breadth: an indicator of age and sex in paleodermatoglyphics. *Variability and Evolution* 11: 5–30.
- KRÁLÍK, M., V. NOVOTNA & M. OLIVA. 2003. Fingerprint on the Venus of Dolní Věstonice I. *L'anthropologie* 40: 107–13.
- KRISHAN, K., T. KANCHAN & C. NGANGOM. 2013. A study of sex differences in fingerprint ridge density in a north Indian young adult population. *Journal of Forensic and Legal Medicine* 20: 217–22. <https://doi.org/10.1016/j.jflm.2012.09.008>
- LYCETT, S.J. & J.D. KEYSER. 2017. Assessing the chronology of post-contact rock art on the northern plains via multivariate statistical comparison with Blackfoot biographic art. *Journal of Anthropological Archaeology* 45: 69–80.
<https://doi.org/10.1016/j.jaa.2016.11.005>
- MARTINEZ GARCÍA, J. 2006. La pintura rupestre esquemática en el proceso de transición y consolidación de las sociedades productoras, in J. Martínez & M. Hernández (ed.) *Actas del Congreso de Arte Rupestre Esquemático en la Península Ibérica: comarca de Los Vélez, 5–7 de Mayo 2004*: 33–56. Vélez-Blanco: Ayuntamiento de Vélez-Blanco.
- MÍGUEZ, V., P. IBANEZ-GIMENO, J. CARRERAS, J. LIRIA & A. MALGOSA. 2016. El artesano de La Canal dels Avellaners (Edad de Bronce, Barcelona): análisis de huellas dactilares. *Trabajos de Prehistoria* 73: 147–59.
<https://doi.org/10.3989/tp.2016.12168>
- MORGADO, A., E. GARCÍA-ALFONSO, L.F. GARCÍA DEL MORAL, J.A. BENAVIDES, F.J. RODRÍGUEZ-TOVAR & J.A. ESQUIVEL. 2018. Embarcaciones prehistóricas y representaciones

- rupestres. Nuevos datos del abrigo de Laja Alta (Jimena de la Frontera, Cádiz). *Complutum* 29: 239–65. <https://doi.org/10.5209/CMPL.62580>
- MUNDORFF, A.Z., E.J. BARTELINK & T.A. MURAD. 2014. Sexual dimorphism in finger ridge breadth measurements: a tool for sex estimation from fingerprints. *Journal of Forensic Sciences* 59: 891–97. <https://doi.org/10.1111/1556-4029.12449>
- NASH, G. & A. TRONCOSO. 2017. The socio-ritual organisation of the upper Limarí Valley: two rock art traditions, one landscape. *Journal of Arid Environments* 143: 15–21. <https://doi.org/10.1016/j.jaridenv.2016.11.014>
- NAYAK, V.C., P. RASTOGI, T. KANCHAN, S.W. LOBO, K. YOGANARASIMHA, S. NAYAK & R.G. MENEZES. 2010. Sex differences from fingerprint ridge density in the Indian population. *Journal of Forensic and Legal Medicine* 17: 84–86. <https://doi.org/10.1016/j.jflm.2009.09.002>
- NELSON, E., J. HALL, P. RANDOLPH-QUINNEY & A. SINCLAIR. 2017. Beyond size: the potential of geometric morphometric analysis of shape and form for the assessment of sex in hand stencils in rock art. *Journal of Archaeological Science* 78: 202–13. <https://doi.org/10.1016/j.jas.2016.11.001>
- PETTITT, P., A.M. CASTILLEJO, P. ARIAS, R.O. PEDRO & R. HARRISON. 2014. New views on old hands: the context of stencils in El Castillo and La Garma caves (Cantabria, Spain). *Antiquity* 88: 47–63. <https://doi.org/10.1017/S0003598X00050213>
- RABAZO-RODRÍGUEZ, A.M., M. MODESTO-MATA, L. BERMEJO & M. GARCÍA-DÍEZ. 2017. New data on the sexual dimorphism of the hand stencils in El Castillo Cave (Cantabria, Spain). *Journal of Archaeological Science: Reports* 14: 374–81. <https://doi.org/10.1016/j.jasrep.2017.06.022>
- RIEMER, H., S. KRÖPELIN & A. ZBORAY. 2017. Climate, styles and archaeology: an integral approach towards an absolute chronology of the rock art in the Libyan Desert (Eastern Sahara). *Antiquity* 91: 7–23. <https://doi.org/10.15184/aqy.2016.252>
- RIVALDERÍA, N., A. SANCHEZ-ÁNDRES, C. ALONSO-RODRIGUEZ, J.E. DIPIERRI & E. GUTIERREZ-REDOMERO. 2016. Fingerprint ridge density in the Argentinean population and its application to sex inference: a comparative study. *HOMO: Journal of Comparative Human Biology* 67: 65–84. <https://doi.org/10.1016/j.jchb.2015.09.004>
- ROGERIO-CANDELERA, M.Á. et al. 2018. Landmark of the past in the Antequera megalithic landscape: a multi-disciplinary approach to the Matacabras rock art shelter. *Journal of Archaeological Science* 95: 76–93. <https://doi.org/10.1016/j.jas.2018.05.005>
- ROJO-GUERRA, M.A., I. GARCÍA-MARTÍNEZ DE LAGRÁN & J.I. ROYO-GUILLÉN. 2018. The beginning of the Neolithic in the mid-Ebro Valley and in Iberia's inland (northern and southern submeseta), Spain. *Quaternary International* 470: 398–438. <https://doi.org/10.1016/j.quaint.2017.12.037>
- ROUILLON, A. 2006. Au Gravettien, dans la grotte Cosquer (Marseille, Bouches-du-Rhône), l'Homme a-t-il compté sur ses doigts? *L'anthropologie* 110: 500–509. <https://doi.org/10.1016/j.anthro.2006.07.003>
- RUIZ-LÓPEZ, J.F., M.W. ROWE, A. HERNANZ, J.M. GAVIRA, R. VIÑAS-VALVERDÚ & A. RUBIO. 2009. Cronología del arte rupestre postpaleolítico y datación absoluta de pátinas de oxalato cálcico: primeras experiencias en Castilla-La Mancha (2004–2007), in J.A. López, R. Martínez Valle & C. Matamoros de Villa (ed.) *El arte rupestre del Arco Mediterráneo de la Península Ibérica: 10 años en la lista del Patrimonio Mundial de la UNESCO*: 303–16. Valencia: Generalitat Valenciana.
- RUIZ-LÓPEZ, J.F., A. HERNANZ, R.A. ARMITAGE, M.W. ROWE, R. VIÑAS, J.A. GAVIRA-VALLEJO & A. RUBIO. 2012. Calcium oxalate AMS ¹⁴C dating and chronology of post-Paleolithic rock paintings in the Iberian Peninsula: two dates from Abrigo de los Oculados (Henarejos, Cuenca, Spain). *Journal of Archaeological Science* 39: 2655–67. <https://doi.org/10.1016/j.jas.2012.02.038>
- SAHLY, A. 1966. *Les mains mutilées dans l'art préhistorique*. Toulouse: s.n.
- SHARPE, K. & L. VAN GELDER. 2006. The study of finger flutings. *Cambridge Archaeological Journal* 16: 281–95. <https://doi.org/10.1017/S0959774306000175>
- SNOW, R. 2006. Sexual dimorphism in Upper Palaeolithic hand stencils. *Antiquity* 80: 390–404. <https://doi.org/10.1017/S0003598X00093704>
- STEELEMAN, K.L., F. CARRERA, R. FABREGAS, T. GUIDERSON & M.W. ROWE. 2005. Direct radiocarbon dating of megalithic paints from

Who painted that? Schematic rock art at the Los Machos rockshelter in southern Iberia

- north-west Iberia. *Antiquity* 79: 379–89.
<https://doi.org/10.1017/S0003598X00114164>
- WALKER, J.W.P., D.T.G. CLINNICK & J.B.W. PEDERSEN. 2018. Profiled hands in Palaeolithic art: the first universally recognized symbol of the human form. *World Art* 8: 1–19.
<https://doi.org/10.1080/21500894.2016.1243573>
- WANG, J.Z., W. GE, D.R. SNOW, P. MITRA & C.L. GILES. 2010. Determining the sexual identities of prehistoric cave artists using digitized handprints: a machine learning approach. *Proceedings of the 18th International Conference on Multimedia, MM 10*: 1325–32.
<https://doi.org/10.1145/1873951.1874214>