

Access
leading
journals in
your subject

Cambridge Core

Explore today at [cambridge.org/core](https://www.cambridge.org/core)

Cambridge Core



CAMBRIDGE
UNIVERSITY PRESS

CONTENTS

Breeding and genetics

- Gourdine, J.-L., Mandonnet, N., Giorgi, M. and Renaudeau, D.*
Genetic parameters for thermoregulation and production traits in lactating sows reared in tropical climate 365
- Cemal, I., Karaman, E., Firat, M. Z., Yilmaz, O., Ata, N. and Karaca, O.*
Bayesian inference of genetic parameters for ultrasound scanning traits of Kivircik lambs 375
- Uemoto, Y., Osawa, T. and Saburi, J.*
Effect of genotyped cows in the reference population on the genomic evaluation of Holstein cattle 382

Nutrition

- Ruiz-Ascacibar, I., Stoll, P., Kreuzer, M., Boillat, V., Spring, P. and Bee, G.*
Impact of amino acid and CP restriction from 20 to 140 kg BW on performance and dynamics in empty body protein and lipid deposition of entire male, castrated and female pigs 394
- Farmer, C., Lapointe, J. and Cormier, I.*
Providing the plant extract silymarin to lactating sows: effects on litter performance and oxidative stress in sows 405
- Luciano, G., Roscini, V., Mattioli, S., Ruggeri, S., Gravador, R. S., Natalello, A., Lanza, M., De Angelis, A. and Priolo, A.*
Vitamin E is the major contributor to the antioxidant capacity in lambs fed whole dried citrus pulp 411
- Dong, H. B., Sun, L. L., Cong, R. H., Tao, S. Y., DuanMu, Y. Q., Tian, J., Ni, Y. D. and Zhao, R. Q.*
Changes in milk performance and hepatic metabolism in mid-lactating dairy goats after being fed a high concentrate diet for 10 weeks 418
- Shaani, Y., Nikbachat, M., Yosef, E., Ben-Meir, Y., Friedman, N., Miron, J. and Mizrahi, I.*
Effect of wheat hay particle size and replacement of wheat hay with wheat silage on rumen pH, rumination and digestibility in ruminally cannulated non-lactating cows 426

Physiology and functional biology of systems

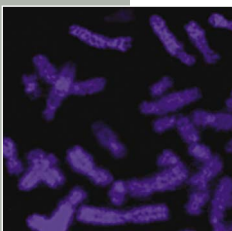
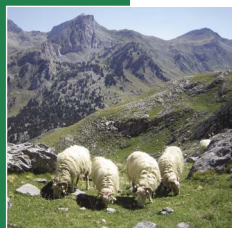
- Leiva, T., Cooke, R. F., Brandão, A. P., Pardelli, U., Rodrigues, R. O., Corrá, F. N. and Vasconcelos, J. L. M.*
Effects of concentrate type and chromium propionate on insulin sensitivity, productive and reproductive parameters of lactating dairy cows consuming excessive energy 436
- Chergui, N., Mormede, P., Foury, A., Khammar, F. and Amirat, Z.*
Seasonal effects on plasma cortisol concentrations in the Bedouin buck: circadian studies and response to ACTH 445
- Munro, J. C., Schenkel, F. S., Physick-Sheard, P. W., Fontoura, A. B. P., Miller, S. P., Tennessen, T. and Montanholi, Y. R.*
Associations of acute stress and overnight heart rate with feed efficiency in beef heifers 452
- Carluccio, A., Gloria, A., Robbe, D., Veronesi, M. C., De Amicis, I., Cairoli, F. and Contri, A.*
Reproductive characteristics of foal heat in female donkeys 461

Behaviour, welfare and health

- Martín, P., Traulsen, I., Buxadé, C. and Krieter, J.*
Development of a multi-criteria evaluation system to assess growing pig welfare 466
- Kim, K. H., Kim, K. S., Kim, J. E., Kim, D. W., Seol, K. H., Lee, S. H., Chae, B. J. and Kim, Y. H.*
The effect of optimal space allowance on growth performance and physiological responses of pigs at different stages of growth 478
- Earley, B., Buckham Sporer, K. and Gupta, S.*
Invited review: Relationship between cattle transport, immunity and respiratory disease 486
- Weng, H. Y., Yadav, S., Olynk Widmar, N. J., Cronney, C., Ash, M. and Cooper, M.*
Modelling the time at which overcrowding and feed interruption emerge on the swine premises under movement restrictions during a classical swine fever outbreak 493
- Piepho, H.-P., Lutz, V., Kjaer, J. B., Grashorn, M., Bennewitz, J. and Bessei, W.*
The presence of extreme feather peckers in groups of laying hens 500

Product quality, human health and well-being

- Couvreur, S. and Hurtaud, C.*
Relationships between milks differentiated on native milk fat globule characteristics and fat, protein and calcium compositions 507
- Patel, M., Sonesson, U. and Hessele, A.*
Upgrading plant amino acids through cattle to improve the nutritional value for humans: effects of different production systems 519
- Eiras, C. E., Guerrero, A., Valero, M. V., Pardo, J. A., Ornaghi, M. G., Rivaroli, D. C., Sañudo, C. and Prado, I. N.*
Effects of cottonseed hull levels in the diet and ageing time on visual and sensory meat acceptability from young bulls finished in feedlot 529
- Mezgebo, G. B., Moloney, A. P., O'Riordan, E. G., McGee, M., Richardson, R. I. and Monahan, F. J.*
Comparison of organoleptic quality and composition of beef from suckler bulls from different production systems 538



Cambridge Core

For further information about this journal
please go to the journal web site at:
www.cambridge.org/animal



MIX
Paper from
responsible sources
FSC® C007785

CAMBRIDGE
UNIVERSITY PRESS