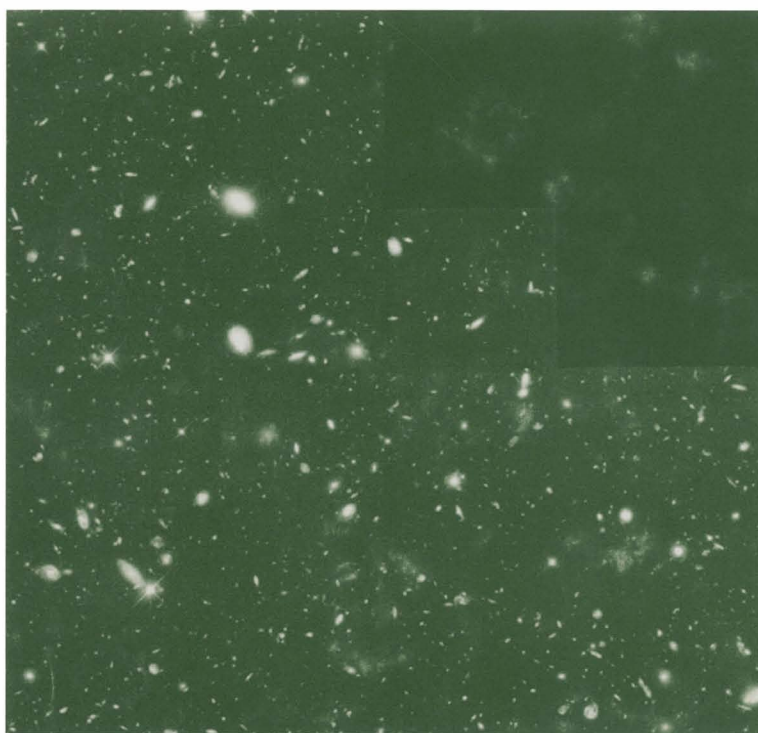


INTERNATIONAL ASTRONOMICAL UNION

SYMPOSIUM No. 183

# COSMOLOGICAL PARAMETERS AND THE EVOLUTION OF THE UNIVERSE

Edited by KATSUHIKO SATO



INTERNATIONAL ASTRONOMICAL UNION

KLUWER ACADEMIC PUBLISHERS

**COSMOLOGICAL PARAMETERS AND THE  
EVOLUTION OF THE UNIVERSE**

INTERNATIONAL ASTRONOMICAL UNION

UNION ASTRONOMIQUE INTERNATIONALE

# COSMOLOGICAL PARAMETERS AND THE EVOLUTION OF THE UNIVERSE

PROCEEDINGS OF THE 183RD SYMPOSIUM OF THE  
INTERNATIONAL ASTRONOMICAL UNION  
HELD IN KYOTO, JAPAN, AUGUST 18–22, 1997

EDITED BY

KATSUHIKO SATO

*Department of Physics,  
The University of Tokyo, Japan*



KLUWER ACADEMIC PUBLISHERS

DORDRECHT / BOSTON / LONDON



A C.I.P. Catalogue record for this book is available from the Library of Congress.

ISBN 0-7923-5459-1 (HB)

---

*Published on behalf of  
the International Astronomical Union  
by  
Kluwer Academic Publishers, P.O. Box 17, 3300 AA Dordrecht, The Netherlands.*

*Sold and distributed in North, Central and South America  
by Kluwer Academic Publishers,  
101 Philip Drive, Norwell, MA 02061, U.S.A.*

*In all other countries, sold and distributed  
by Kluwer Academic Publishers,  
P.O. Box 322, 3300 AH Dordrecht, The Netherlands.*

*Printed on acid-free paper*

*All Rights Reserved  
©1999 International Astronomical Union*

*No part of the material protected by this copyright notice may be reproduced or utilized  
in any form or by any means, electronic or mechanical, including photocopying,  
recording or by any information storage and retrieval system, without written permission  
from the publisher.*

*Printed in the Netherlands.*

## TABLE OF CONTENTS

PREFACE	xi
THE ORGANIZING COMMITTEES	xii
<u>I. Cosmological Parameters, <math>H_0</math>, <math>q_0</math>, <math>\Omega_0</math> and <math>\Lambda</math></u>	
Cosmological Parameters and the Evolution of the Universe : Progress and Prospects *M.S. Longair	1
The Hubble Space Telescope Key Project to Measure the Hubble Constant *W.L. Freedman, J.R. Mould, R.C. Kennicutt Jr. and B.F. Madore	17
The Linearity of the Cosmic Expansion Field and the Value of the Hubble Constant *G.A. Tammann	31
The Tip of the Red Giant Branch as a Population II Distance Indicator *S. Sakai	48
The Cosmological Parameters $H_0$ and $\Omega_0$ *R.B. Tully	54
Cosmological Parameters from the CERES Project A. Biggs I.W.A. Browne, P. Helbig, N.J. Jackson, L. King, D.R. Marlow, A. Mcguinness, S. Nair, C.M. Sykes, P.N. Wilkinson, E. Xanthopoulos, A.G. de Bruyn, R. Blandford, J. Cohen, C. Fassnacht, T. Pearson, A. Readhead, D. Womble, M. Bremer, G. Miley, L. Koopmans, S. Myers and A. Patnaik	64
Do Lensing Statistics Rule out a Cosmological Constant? M. Chiba and Y. Yoshii	65
$H_0$ from Distant Clusters of Galaxies Observed with <i>ASCA</i> T. Furuzawa, Y. Tawara, K. Yamashita, S. Miyoshi and M. Matsuura	66
Measuring Cosmological Parameters with Very Long Baseline Interferometry L.I. Gurvits, K.I. Kellermann and S. Frey	67
Theoretical Light Curves for Type Ia Supernovae and Determination of the Hubble Constant K. Iwamoto and K. Nomoto	68
Globular Cluster Ages from Hipparcos Subdwarfs F. Pont, D.A. Vandenberg, M. Mayor and C. Turon	69
CO Tully-Fisher Relation for the Distance Measurement to Redshift $z=20,000$ to $50,000$ km/s Y. Sofue, Y. Tutui, M. Honma, T. Ichikawa, K. Wakamatsu, I. Kazes and J. Dickey	70
The Value of $H_0$ from the TF Diameter Relation G. Theureau	71
Gravitational Lensing as a Cosmological Tool J. Wambsganss, R. Cen and J.P. Ostriker	72
Estimation of the Internal Extinction of Spiral Galaxies for Multi-color Tully-Fisher Relations M. Watanabe and N. Yasuda	73
* Invited talks	

## II. Cosmic Microwave Background Radiation

Current Status of the Cosmic Microwave Background Radiation *R.B. Partridge	74
Determination of Cosmological Parameters by Cosmic Microwave Background *N. Sugiyama	88
The $H - \Omega_0$ Diagram from Recent CMB Observations *C.H. Lineweaver	98
Observations of the CMB on Scales of $2^\circ$ to $15^\circ$ R.D. Davies, R.J. Davis, A. Wilkinson, R.A. Watson, S.J. Melhuish, S. Dicker, S. Veeraraghavan, R. Rebolo, C.M. Gutierrez, R.Y. Hoyland, A.N. Lasenby, S. Hancock, A.W. Jones and G. Rocha	103
Correlation Functions of CMB Anisotropy and Polarization K.W. Ng	104
Extended Rees-Sciama Effect and Anisotropy of Cosmic Microwave Background Radiation X. Wu, C. Xu and E. Brünig	105
CMB Anisotropies Produced by Nonlinear Voids N. Sakai, J. Yokoyama and N. Sugiyama	106

## III. Galaxy Formation and Evolution

The Formation and Evolution of Galaxies : Perspectives on the Origin of the Hubble Sequence *R.S. Ellis	107
Galaxy Evolution Probed by Mid-Infrared Deep Survey *Y. Taniguchi	124
Evolutionary Population Synthesis Models of Primeval Galaxies: A Critical Appraisal *A. Buzzoni	134
Ages of Giant Elliptical Galaxies as Evidence for the Cosmological Constant *Y.W. Lee	140
Luminosity Density Evolution in the Universe and Cosmological Parameters *T. Totani	145
Galaxy Formation: the Role of Gravitational Collisions C. Balland, J. Silk and R. Schaeffer	151
A Revised Age for the $z=1.55$ Galaxy LBDS 53W091 G. Bruzual A. and G. Magris C.	152
Formation and Evolution of Disk Galaxies C. Firmani and V. Avila-Reese	153
An ANN Approach to Classification of Galaxy Spectra for the 2DF Galaxy Redshift Survey S.R. Folkes, O. Lahav and S.J. Maddox	154
Structure of Dark Matter Halo T. Fukushige and J. Makino	155
Multicolor Luminosity Function of Field Galaxies A. Brunello, P. Saracco, B. Garilli, D. Maccagni and G. Chincarini	156
Do All Spiral Galaxies Have a Massive Dark Halo ? M. Honma and Y. Sofue	157
Evolutionary and Cosmological Corrections for High Redshift Galaxies C.S. Möller, U. Fritze-V. Alvensleben and K.J. Fricke	158

CO Observations of High-z Objects K. Ohta, K. Nakanishi, M. Akiyama, T.T. Takeuchi, T. Yamada, Y. Shioya, K. Kohno, R. Kawabe, N. Kuno and N. Nakai	159
Color of Dwarf Galaxies in the Coma Cluster S. Okamura, Y. Komiyama, M. Sekiguchi, N. Kashikawa, K. Shimasaku, M. Yagi, M. Doi, N. Yasuka, W. Kawasaki, M. Iye, D. Carter and B. Mobasher	160
Evolution of Primordial Protostellar Clouds K. Omukai, R. Nishi, H. Uehara and H. Susa	161
Wide Binaries and the Age of the Galaxy T.D. Oswalt, J.A. Smith and M.A. Wood	162
Post-Newtonian Expansion of Gravitational Waves from a Particle in Circular Orbits around a Rotating Black Hole : Effects of Black Hole Absorption H. Tagoshi, S. Mano and E. Takasugi	163
Red Galaxies around a Quasar at $z=1.1$ and their Ages I. Tanaka, T. Yamada, A. Aragón-Salamanca, T. Kodama, K. Ohta and N. Arimoto	164
The Tully-Fisher Relation Using the CO-Line for Interacting Galaxies Y. Tutui and Y. Sofue	165
Fragmentation of the Primordial Gas Clouds H. Uehara, H. Susa, R. Nishi, M. Yamada and T. Nakamura	166
Limits on the Variation of Physical Constants Derived from Molecular Absorption Lines T. Wiklind and F. Combes	167
Noncompact Objects as Microlenses A.F. Zharov and M.V. Sazhin	168

#### IV. Structure Formation and Dark Matter

Regularity of the Large-Scale Structure of the Universe *J. Einasto	169
The AAO 2DF QSO Redshift Survey *B.J. Boyle, R.J. Smith, T.Shanks, S.M.Croom and L.Miller	178
Void Hierarchy in the Northern Local Void *U. Lindner, K.J. Fricke, J. Einasto and M. Einasto	185
X-Ray Study of Clusters of Galaxies with ASCA *T. Ohashi	191
The X-Ray Background and the AGN Luminosity Function *G. Hasinger	200
Analysis of Large Scale Structure using Percolation, Genus and Shape Statistics *V. Sahni	210
Testing Cosmological Models with Clusters of Galaxies *S.Gottlöber, J. Retzlaff and A. Klypin	221
Measuring Galaxy Bias from the High-Order Correlation Functions *Y.P. Jing	229
Determining $\Omega_0$ and $\lambda_0$ from Cosmological Redshift Distortion of Galaxies and Quasars *Y. Suto	235

Gravitational Lensing in the Clumpy Universe H. Asada	241
The Mass Function of Cosmic Structures E. Audit, R. Teyssier and J.-M. Alimi	242
Cosmological Parameters from the X-Ray Evolution of Clusters R.G. Bower and S.T. Kay	243
Probing Density Fluctuations in the Universe with the FIRST Radio Survey C.M. Cress	244
Tidal Torques Dynamical Friction and the Structure of Clusters of Galaxies A. Del Popolo and M. Gambera	245
Typical Scales in Distribution of IRAS Galaxies Z.G. Deng, X.Y. Xia and G. Börner	246
Weak Galaxy-Galaxy Lensing in HST DATA T. Ebbels, J.P. Kneib and R. Ellis	247
Multiscale Comparison of Potent and IRAS P. Haines and G.F.R. Ellis	248
Formation Mechanism of Hierarchical Astronomical Objects in the Cosmic String Scheme T. Hara, S. Miyoshi and P. Mähönen	249
Pancake Collapse and Structure Formation from CDM Density Fluctuations T. Hosokawa and M. Yokosawa	250
Cosmological Studies from the MRC/1Jy Radio Galaxy Sample : The Spectral Index – Redshift Correlation R.M. Athreya and V.K. Kapahi	251
N-Body Simulation of Large Scale Structure in the Universe with Oscillating Scalar Field K. Kawabata, H. Taguchi and Y. Andoh	252
Cosmological N-Body Simulations with GRAPE-4 A. Kawai, T. Fukushige, M. Taiji, J. Makino and D. Sugimoto	253
Possible Supercluster at $z \sim 0.25$ towards the South Galactic Pole W. Kawasaki, K. Shimasaku, N. Kashikawa, M. Sekiguchi, M. Doi and S. Okamura	254
Number Counts of Clusters of Galaxies in X-ray and Submm Bands T. Kitayama, S. Sasaki and Y. Suto	255
Faint Structures in Low Density Regions of the Nearby Universe U. Lindner, K.J. Fricke, J. Einasto and M. Einasto	256
K Band Galaxy Counts in the South Galactic Pole Region T. Minezaki, Y. Kobayashi, Y. Yoshii and B.A. Peterson	257
Measuring the Deceleration Parameter from Cosmological Redshift Distortion of Galaxy Correlation Function at Small Redshift T.T. Nakamura	258



Distribution and evolution of quasars S. Nasiri and V. Rezanian	259
The Angular Correlation Function of Faint Galaxies during the Decreasing Correlation Period T. Ogawa, B.F. Roukema and K. Yamashita	260
MACHO Detection from Measurements of Gravitational Deflection K. Ohnishi, M. Hosokawa and T. Fukushima	261
Galaxy Distribution in Clusters of Galaxies T. Okamoto, S. Yachi and A. Habe	262
Are there Ghost Images of the Coma Cluster at other Redshifts? B.F. Roukema	263
A New Method to Estimate Cosmological Parameters Using the Baryon Fraction of Clusters of Galaxies S. Sasaki	264
Kinematical Evolution of the Pairwise Velocity Field of Galaxies N. Seto and J. Yokoyama	265
Subclusters in the Virgo Area Z.Y. Shao	266
Measuring the Density Fluctuation From the Cluster Gas Mass Function K. Shimasaku	267
Non-Gaussian Isocurvature Models A.J. Stirling and J.A. Peacock	268
Anisotropies in Luminosity Distance N. Sugiura, N. Sugiyama and M. Sasaki	269
Theoretical and Observational Implications of a Super-Horizon-Scale Inhomogeneous Cosmological Model K. Tomita	270
Scale-Dependence of Bias from APM-BGC Sample L.Z. Fang, Z.G. Deng and X.Y. Xia	271
Type-Specific Luminosity Functions of Nearby Clusters of Galaxies M. Yagi, K. Shimasaku, N. Yasuda, M. Doi, S. Okamura, N. Kashikawa and M. Sekiguchi	272
Linear Evolution of Small Scale Cosmological Density Perturbations K. Yamamoto, N. Sugiyama and H. Sato	273
Scale-Invariant Correlation Functions of Cosmological Density Fluctuations in the Strong Clustering Regime and the Stability T. Yano and N. Gouda	274
Galaxy Luminosity Function based on the Press-Schechter Theory H. Yoshida, M. Umemura and Y. Yoshii	275
Radio Source Counts at 232 MHz X. Zhang	276

V. Cosmological Models

An Alternative Cosmology : The QSSC *J.V. Narlikar	277
Explosive Cosmogony and the Quasi-Steady State Cosmology *G. Burbidge	286
Association of X-ray Quasars with Active Galaxies *H. Arp	290
New Evidence for Non-Cosmological Redshift Y. Chu and X. Zhu	296
A Probe of Planck Energy Physics *F. Occhionero, S. Monastra, C. Baccigalupi and L. Amendola	297
One Bubble Inflation *T. Tanaka	303
Observational Physics of Mirror World N.G. Bochkarev and M. Yu. Khlopov	309
Decaying Cosmological Constant and the Choice of a Conformal Frame Y. Fujii	310
Formation of Topological Defects during Preheating S. Kasuya and M. Kawasaki	311
Big Bang Nucleosynthesis and Lepton Number Asymmetry in the Universe K. Kohri, M. Kawasaki and K. Sato	312
Reduction of Sound Speed during Cosmological First Order Phase Transition M. Nagasawa and J. Yokoyama	313
Does Inflationary Particle Production Suggest a Low-Density Flat Universe ? V. Sahni and S. Habib	314
Renormalization Group Approach in Newtonian Cosmology Y. Sota, T. Kobayashi and K. Maeda	315
A Pure Geometric Approach of Cosmology M.I. Wanas	316